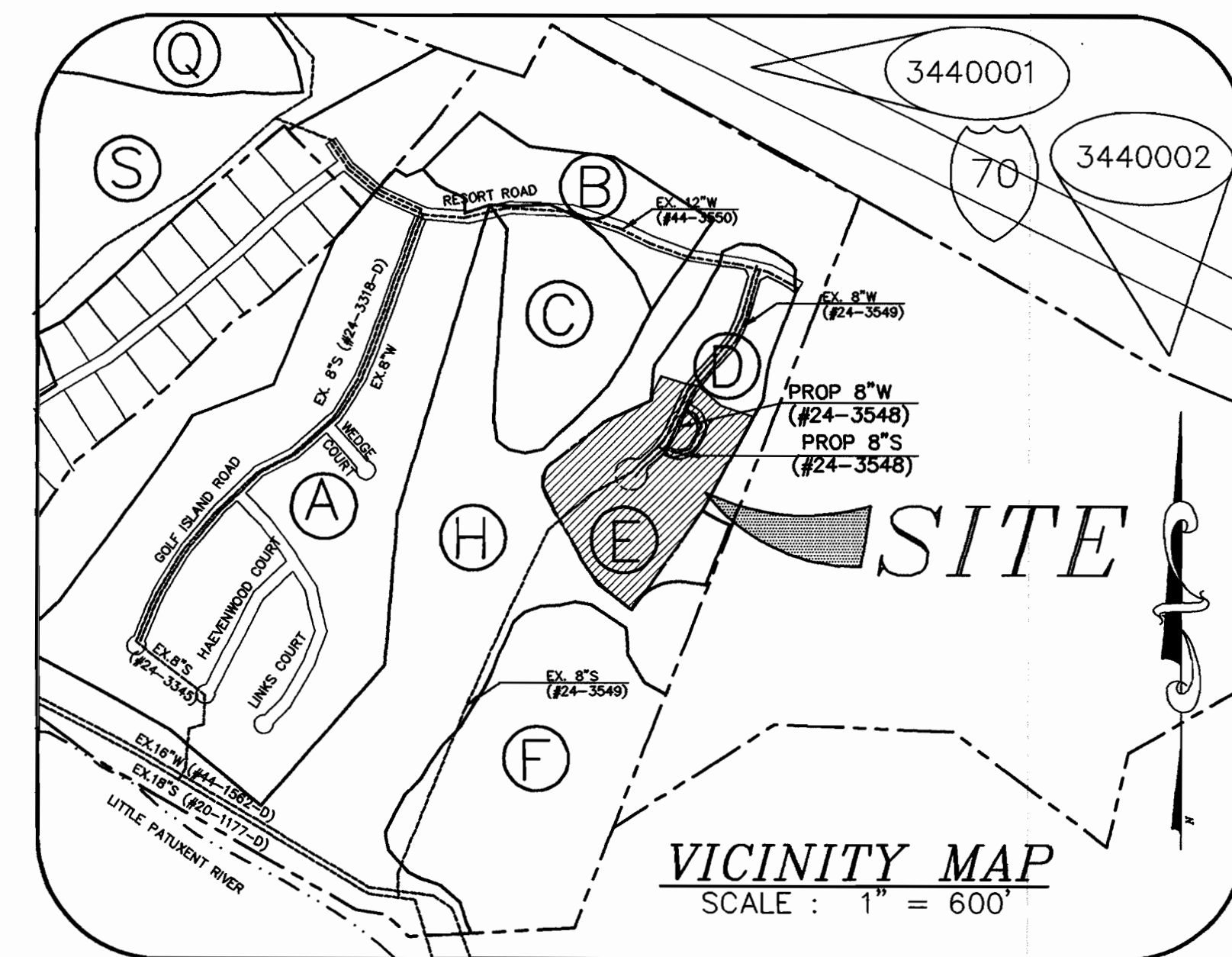


**QUANTITY TABLE**

ITEMS	QUANTITIES ESTIMATED	QUANTITIES	TYPE	MANUFACTURER/SUPPLIER
8"W DIP	443 L.F.			
6"W DIP	293 L.F.			
1 1/2" W DIP	215 L.F.			
1"W DIP	540 L.F.			
6" VALVE	3 EACH			
8" VALVE	1 EACH			
8" PLUG	1 EACH			
FIRE HYDRANT	1 EACH			
8"S (PVC)	273 L.F.			
4"SHC (PVC)	214 L.F.			
4"MANHOLE	3 EACH			
SURVEY AND DRAFTING DIVISION AS-BUILT DATE				
NAME OF UTILITY CONTRACTOR:				

**WATER AND SEWER MAIN EXTENSIONS  
THE LEGENDS AT  
TURF VALLEY  
PGCC DISTRICT, RESIDENTIAL SUBDISTRICT  
PHASE II - LOTS 92-125  
2nd ELECTION DISTRICT  
HOWARD COUNTY, MARYLAND  
CONTRACT NO. 24-3548-D**

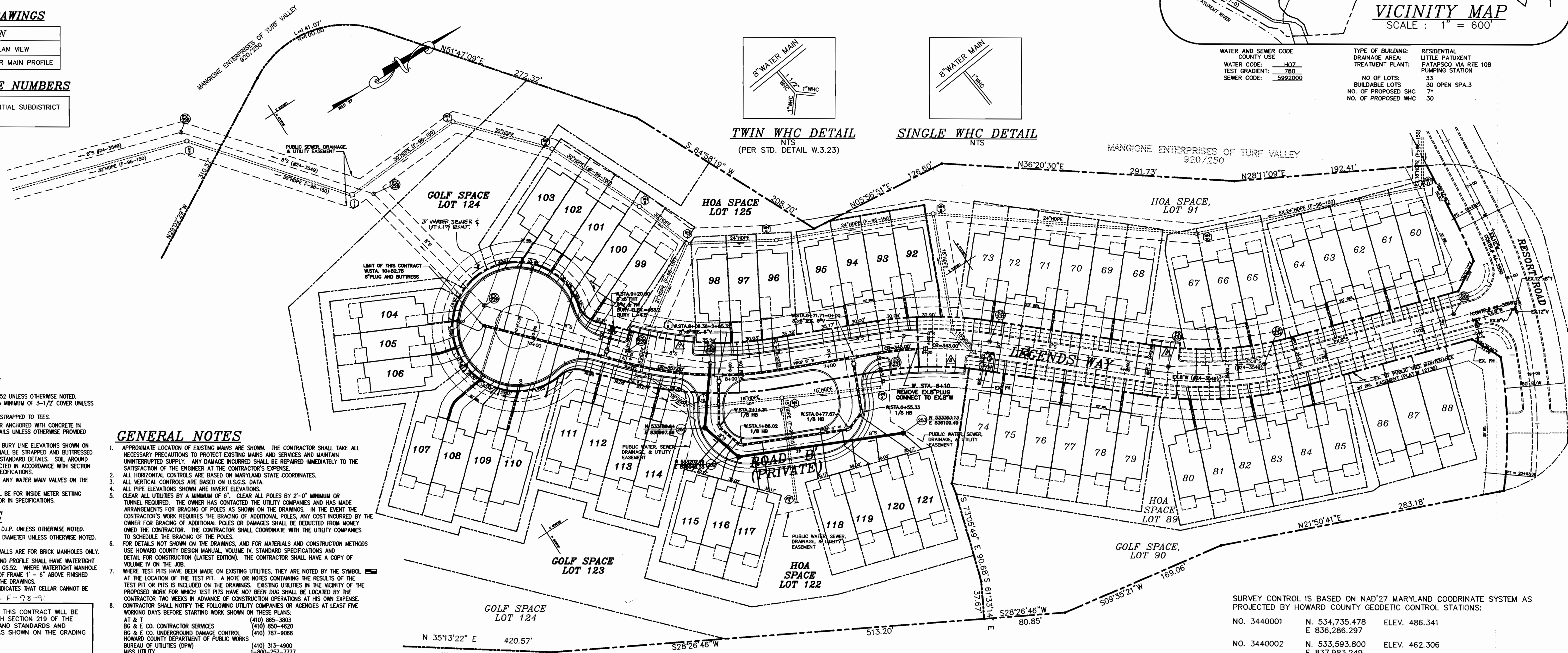


**INDEX OF DRAWINGS**

NO.	DESCRIPTION
1	TITLE SHEET & PLAN VIEW
2	WATER AND SEWER MAIN PROFILE

**PLAN REFERENCE NUMBERS**

FDP PGCC DISTRICT, RESIDENTIAL SUBDISTRICT  
SP-93-14 F-96-151



**WATER NOTES**

- ALL WATER MAINS TO BE D.I.P. CLASS 52 UNLESS OTHERWISE NOTED.
- TOPS OF ALL WATER MAINS TO HAVE A MINIMUM OF 3-1/2" COVER UNLESS OTHERWISE NOTED.
- VALVES ADJACENT TO TEES SHALL BE STRAPPED TO TEES.
- ALL FITTINGS SHALL BE BUTTRESSED OR ANCHORED WITH CONCRETE IN ACCORDANCE WITH THE STANDARD DETAILS UNLESS OTHERWISE PROVIDED FOR ON THE DRAWINGS.
- FIRE HYDRANTS SHALL BE SET TO THE BURY LINE ELEVATIONS SHOWN ON THE DRAWINGS. ALL FIRE HYDRANTS SHALL BE STRAPPED AND BUTTRESSED WITH CONCRETE IN ACCORDANCE WITH STANDARD DETAILS. SOIL AROUND THE FIRE HYDRANT SHALL BE COMPACTED IN ACCORDANCE WITH SECTION 1000 AND 1005 OF THE STANDARD SPECIFICATIONS.
- THE CONTRACTOR SHALL NOT OPERATE ANY WATER MAIN VALVES ON THE EXISTING WATER SYSTEM.
- ALL WATER HOUSE CONNECTIONS SHALL BE FOR INSIDE METER SETTING UNLESS OTHERWISE NOTED ON PLANS OR IN SPECIFICATIONS.

**SEWER NOTES**

- ALL SEWER MAINS SHALL BE P.V.C. OR D.I.P. UNLESS OTHERWISE NOTED.
- ALL MANHOLES SHALL BE 4'-0" INSIDE DIAMETER UNLESS OTHERWISE NOTED.
- FORCE MAINS SHALL BE D.I.P. ONLY.
- MANHOLES SHOWN WITH 12" AND 16" WALLS ARE FOR BRICK MANHOLES ONLY.
- MANHOLES DESIGNATED W.T. IN PLAN AND PROFILE SHALL HAVE WATER TIGHT FRAME AND COVERS, STANDARD DETAIL GS.52. WHERE WATER TIGHT MANHOLE FRAME AND COVER IS USED, SET TOP OF FRAME 1' - 6" ABOVE FINISHED GRADE UNLESS OTHERWISE NOTED ON THE DRAWINGS.
- HOUSE(S) WITH THE SYMBOL "C.N.S." INDICATES THAT CELLAR CANNOT BE SERVED.

**GENERAL NOTES**

- APPROXIMATE LOCATION OF EXISTING MAINS ARE SHOWN. THE CONTRACTOR SHALL TAKE ALL NECESSARY PRECAUTIONS TO PROTECT EXISTING MAINS AND SERVICES AND MAINTAIN UNINTERRUPTED SUPPLY. ANY DAMAGE INCURRED SHALL BE REPAIRED IMMEDIATELY TO THE SATISFACTION OF THE ENGINEER AT THE CONTRACTOR'S EXPENSE.
- ALL HORIZONTAL CONTROLS ARE BASED ON MARYLAND STATE COORDINATES.
- ALL VERTICAL CONTROLS ARE BASED ON U.S.G.S. DATA.
- ALL PIPE ELEVATIONS SHOWN ARE INVERT ELEVATIONS.
- CLEAR ALL UTILITIES BY A MINIMUM OF 6". CLEAR ALL POLES BY 2'-0" MINIMUM OR TUNNEL REQUIRED. THE OWNER HAS CONTACTED THE UTILITY COMPANIES AND HAS MADE ARRANGEMENTS FOR BRACING OF POLES AS SHOWN ON THE DRAWINGS. IN THE EVENT THE CONTRACTOR'S WORK REQUIRES THE BRACING OF ADDITIONAL POLES, ANY COST INCURRED BY THE OWNER FOR BRACING OF ADDITIONAL POLES OR DAMAGES SHALL BE DEDUCTED FROM MONEY OWED THE CONTRACTOR. THE CONTRACTOR SHALL COORDINATE WITH THE UTILITY COMPANIES TO SCHEDULE THE BRACING OF THE POLES.
- FOR DETAILS NOT SHOWN ON THE DRAWINGS, AND FOR MATERIALS AND CONSTRUCTION METHODS USE HOWARD COUNTY DESIGN MANUAL, VOLUME IV, STANDARD SPECIFICATIONS AND DETAIL FOR CONSTRUCTION (LATEST EDITION). THE CONTRACTOR SHALL HAVE A COPY OF VOLUME IV ON THE JOB.
- WHERE TEST PITS HAVE BEEN MADE ON EXISTING UTILITIES, THEY ARE NOTED BY THE SYMBOL AT THE LOCATION OF THE TEST PIT. A NOTE OR NOTES CONTAINING THE RESULTS OF THE TEST PIT OR PITS IS INCLUDED ON THE DRAWINGS. EXISTING UTILITIES IN THE VICINITY OF THE PROPOSED WORK FOR WHICH TEST PITS HAVE NOT BEEN MADE SHALL BE LOCATED BY THE CONTRACTOR TWO WEEKS IN ADVANCE OF CONSTRUCTION OPERATIONS AT HIS OWN EXPENSE. CONTRACTOR SHALL NOTIFY THE FOLLOWING UTILITY COMPANIES OR AGENCIES AT LEAST FIVE WORKING DAYS BEFORE STARTING WORK SHOWN ON THESE PLANS:
- AT & T (410) 865-3803
- B & E CO. CONTRACTOR SERVICES (410) 450-4500
- BG & E CO. UNDERGROUND DAMAGE CONTROL (410) 787-9068
- HOWARD COUNTY DEPARTMENT OF PUBLIC WORKS (410) 313-4900
- BUREAU OF UTILITIES (DPM) (410) 745-1222
- MESS UTILITY (410) 745-1222
- COLUMBIA PIPELINE CO. (410) 745-1222
- STATE HIGHWAY ADMINISTRATION (410) 531-5333
- TREES AND SHRUBS ARE TO BE PROTECTED FROM DAMAGE TO THE MAXIMUM EXTENT. TREES AND SHRUBS LOCATED WITH THE CONSTRUCTION STRIP ARE NOT TO BE REMOVED OR DAMAGED BY THE CONTRACTOR.
- CONTRACTOR SHALL REMOVE TREES, STUMPS AND ROOTS ALONG LINE OF EXCAVATION. PAYMENT FOR SUCH REMOVAL SHALL BE INCLUDED IN THE UNIT PRICE BID FOR CONSTRUCTION OF THE MAIN.
- THE CONTRACTOR SHALL NOTIFY THE BUREAU OF HIGHWAYS, HOWARD COUNTY, AT (410) 313-2450 AT LEAST FIVE (5) WORKING DAYS BEFORE ANY OPEN CUT OF ANY COUNTY ROAD OR BORING/JACKING OPERATION IN COUNTY ROADS FOR LAYING WATER/SEWER MAINS OR HOUSE CONNECTIONS. THE APPROVAL OF THESE DRAWINGS WILL CONSTITUTE COMPLIANCE WITH DPM REQUIREMENTS PER SECTION 18.114 (c) OF THE HOWARD COUNTY CODE.
- PROVIDE 10' HORIZONTAL DISTANCE BETWEEN THE WATER AND SEWER HOUSE CONNECTION.

**SEDIMENT CONTROL MEASURES FOR THIS CONTRACT WILL BE IMPLEMENTED IN ACCORDANCE WITH SECTION 219 OF THE HOWARD COUNTY DESIGN MANUAL AND STANDARDS AND IN DEVELOPING AREAS AND ALSO AS SHOWN ON THE GRADING (F-96-1514 F-98-91)**

REVIEWED FOR HOWARD COUNTY SOIL CONSERVATION DISTRICT AND MEETS TECHNICAL REQUIREMENTS.

*Reef Summer* 9/13/99  
U.S. NATURAL RESOURCES CONSERVATION SERVICE DATE:

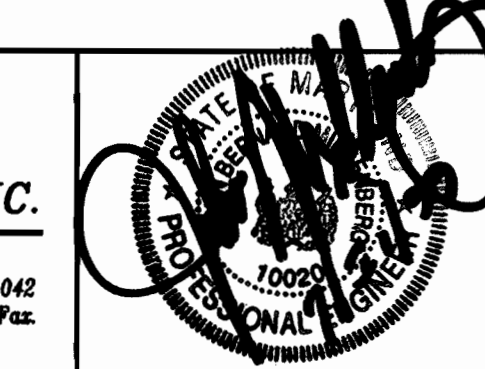
THIS DEVELOPMENT PLAN IS APPROVED FOR SOIL EROSION AND SEDIMENT CONTROL BY THE SOIL CONSERVATION DISTRICT.

*Shirley R. Rabin* 9/13/99  
DATE:

DEPARTMENT OF PUBLIC WORKS  
HOWARD COUNTY, MARYLAND  
*Robert M. Berman* 8-31-99  
CHIEF, BUREAU OF UTILITIES DATE

DEPARTMENT OF PLANNING & ZONING  
HOWARD COUNTY, MARYLAND  
*Michael J. ...* 9/13/99  
CHIEF, DEVELOPMENT ENGINEERING DIVISION DATE

**MILDENBERG, BOENDER & ASSOC., INC.**  
Engineers Planners Surveyors  
5072 Dorsey Hall Drive, Suite 202, Ellicott City, Maryland 21042  
(410) 997-0236 (301) 621-5521 Wash. (410) 997-0238 Fax



engineering	M.P.		
illustration	M.P.		
approval	J.M.		
project	98076		
date	JUNE 99		
BY	NO.	REVISION	DATE

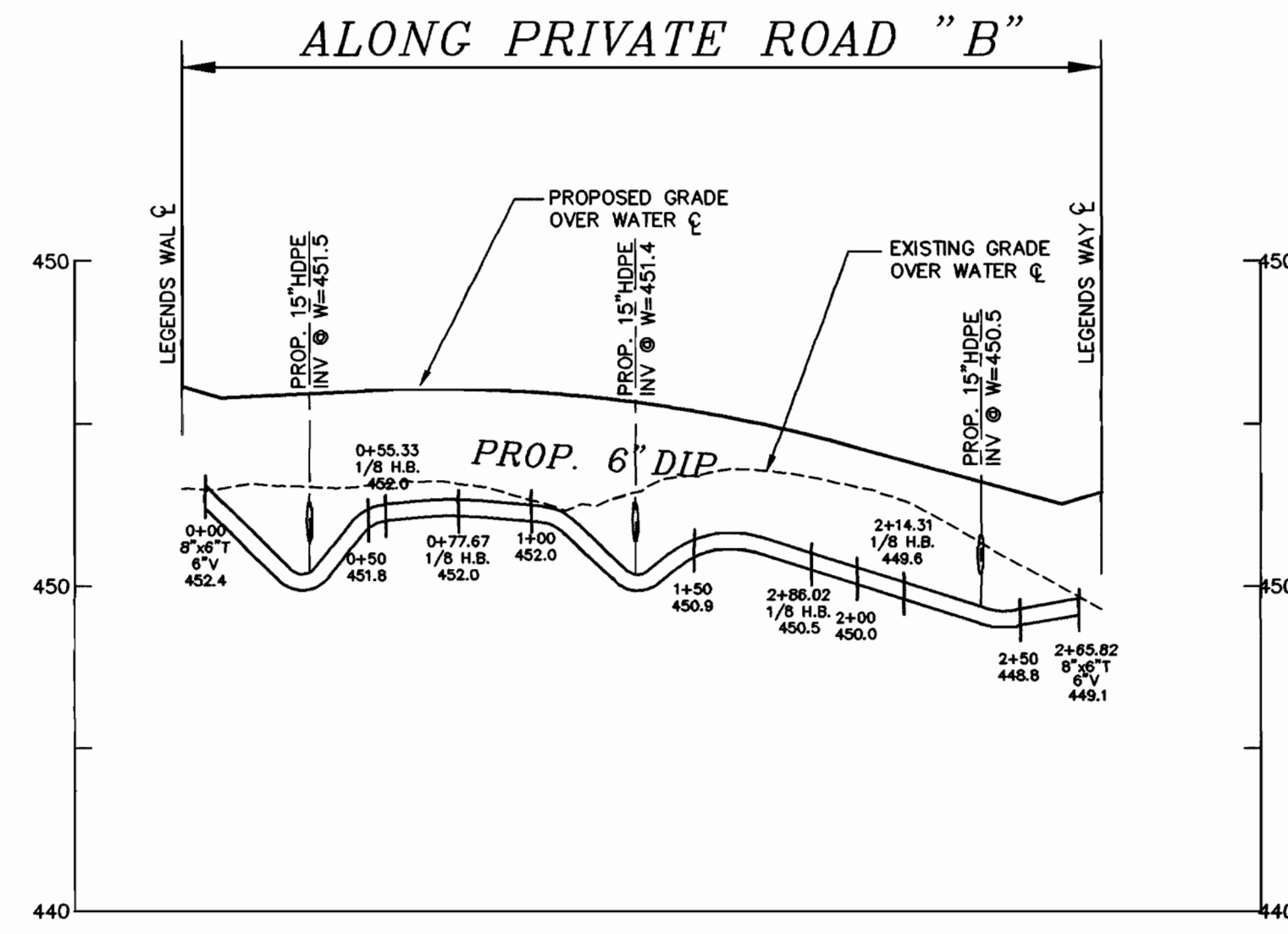
**TITLE SHEET  
WATER AND SEWER  
PLAN**

600' SCALE MAP NO. 16 BLOCK NO. 12, 18

THE LEGENDS AT TURF VALLEY, PHASE TWO  
LOTS 92 THRU 125  
PGCC DISTRICT, RESIDENTIAL SUBDISTRICT  
(PART OF POD D)  
CONTRACT 24-3548-D  
SECOND ELECTION DISTRICT  
HOWARD COUNTY

scale  
1"=50'  
1 of 2

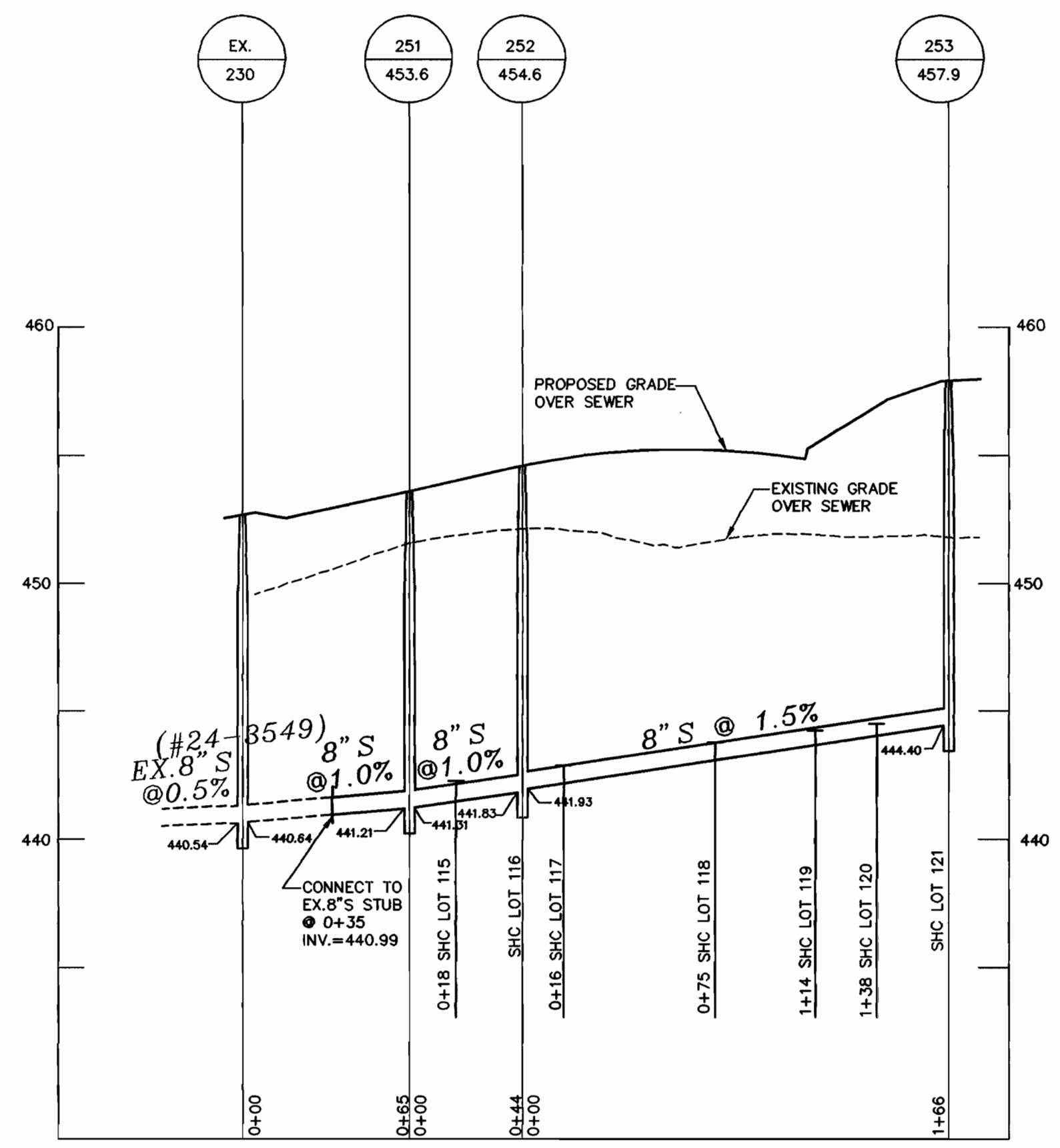
98076/DWG/AS-S-2



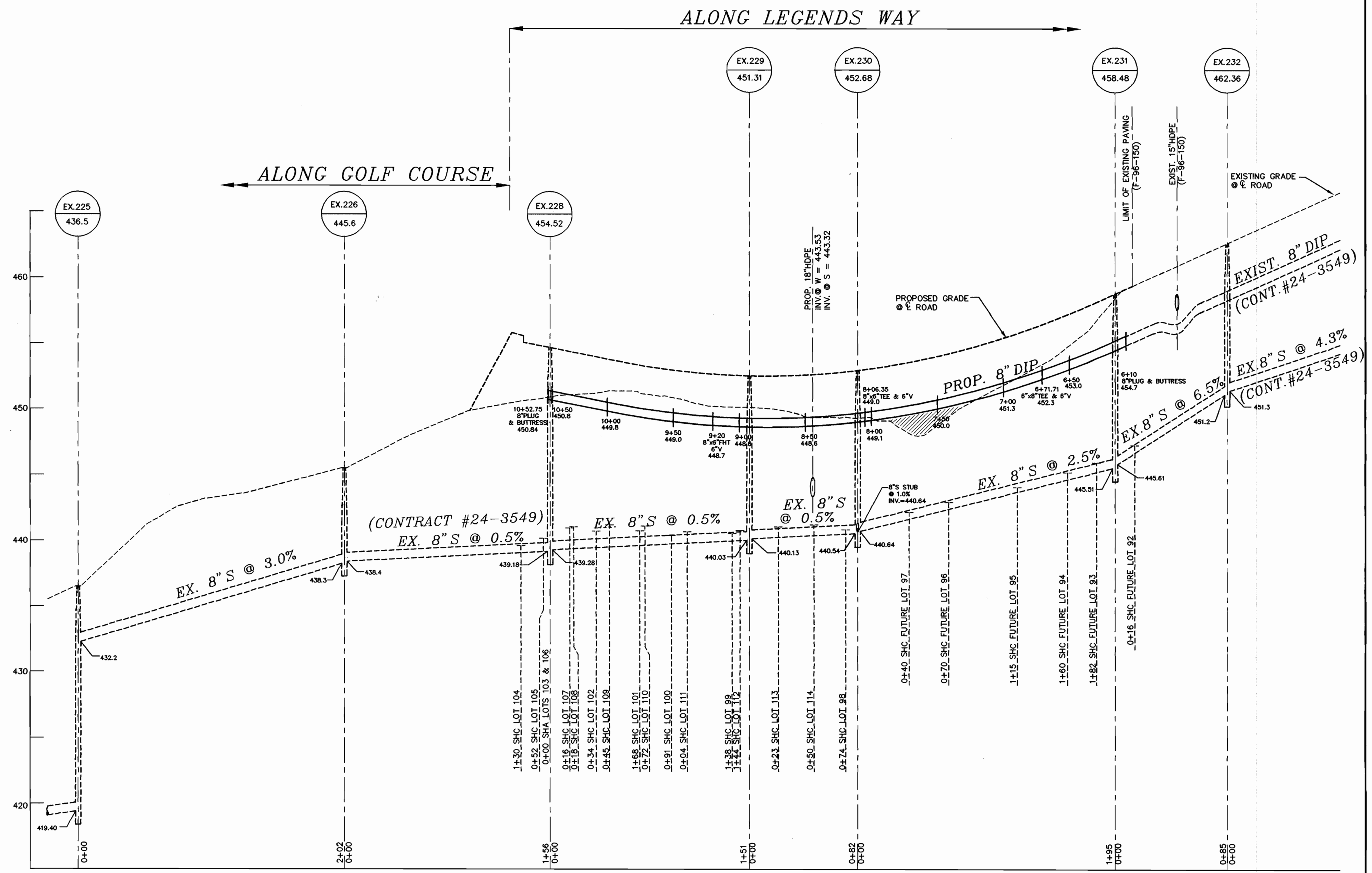
**WATER PROFILE**  
SCALE: HORIZ: 1"=50'  
VERT: 1"=5"

LOT	SHC INV. @ R/W	MIN. BSMT.	LOT	SHC INV. @ R/W	MIN. BSMT.
107*	440.95	445.95	92*	447.22	451.42
108*	441.04	445.84	93*	445.92	449.92
109*	441.18	445.88	94*	445.17	449.37
110*	441.10	445.90	95*	444.05	448.35
111*	440.67	445.17	96*	442.92	447.12
112*	440.77	445.27	97*	442.17	446.37
113*	441.05	445.55	98*	440.67	448.97
114*	441.20	445.71	99*	440.54	444.74
115	442.27	446.27	100*	440.41	444.71
116	442.50	446.50	101*	440.74	445.04
117	442.87	446.97	102*	440.72	445.02
118	443.76	447.76	103*	441.40	443.50
119	444.24	448.24	104*	439.61	444.04
120	444.50	448.50	105*	440.17	444.47
121	445.00	449.00	106*	441.60	446.00

\*NOTE: EXIST. SHC FROM CONT. # 24-3549 PHASE II



**SEWER PROFILE**  
SCALE: HORIZ: 1"=50'  
VERT: 1"=5"

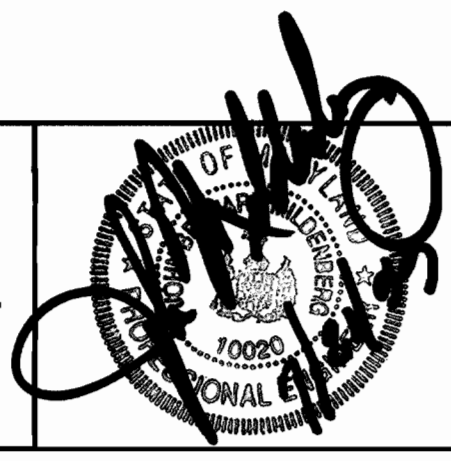


**PROFILE**  
SCALE: HORIZ: 1"=50'  
VERT: 1"=5"

DEPARTMENT OF PUBLIC WORKS  
HOWARD COUNTY, MARYLAND  
Robert M. Bennett 8-31-99  
CHIEF, BUREAU OF UTILITIES DATE

DEPARTMENT OF PLANNING & ZONING  
HOWARD COUNTY, MARYLAND  
[Signature] 9/6/99  
CHIEF, DEVELOPMENT ENGINEERING DIVISION DATE

**MILDENBERG, BOENDER & ASSOC., INC.**  
Engineers Planners Surveyors  
5072 Dorsey Hall Drive, Suite 202, Ellicott City, Maryland 21042  
(410) 997-0296 Fax (301) 821-6521 Wash. (410) 997-0298 Fax



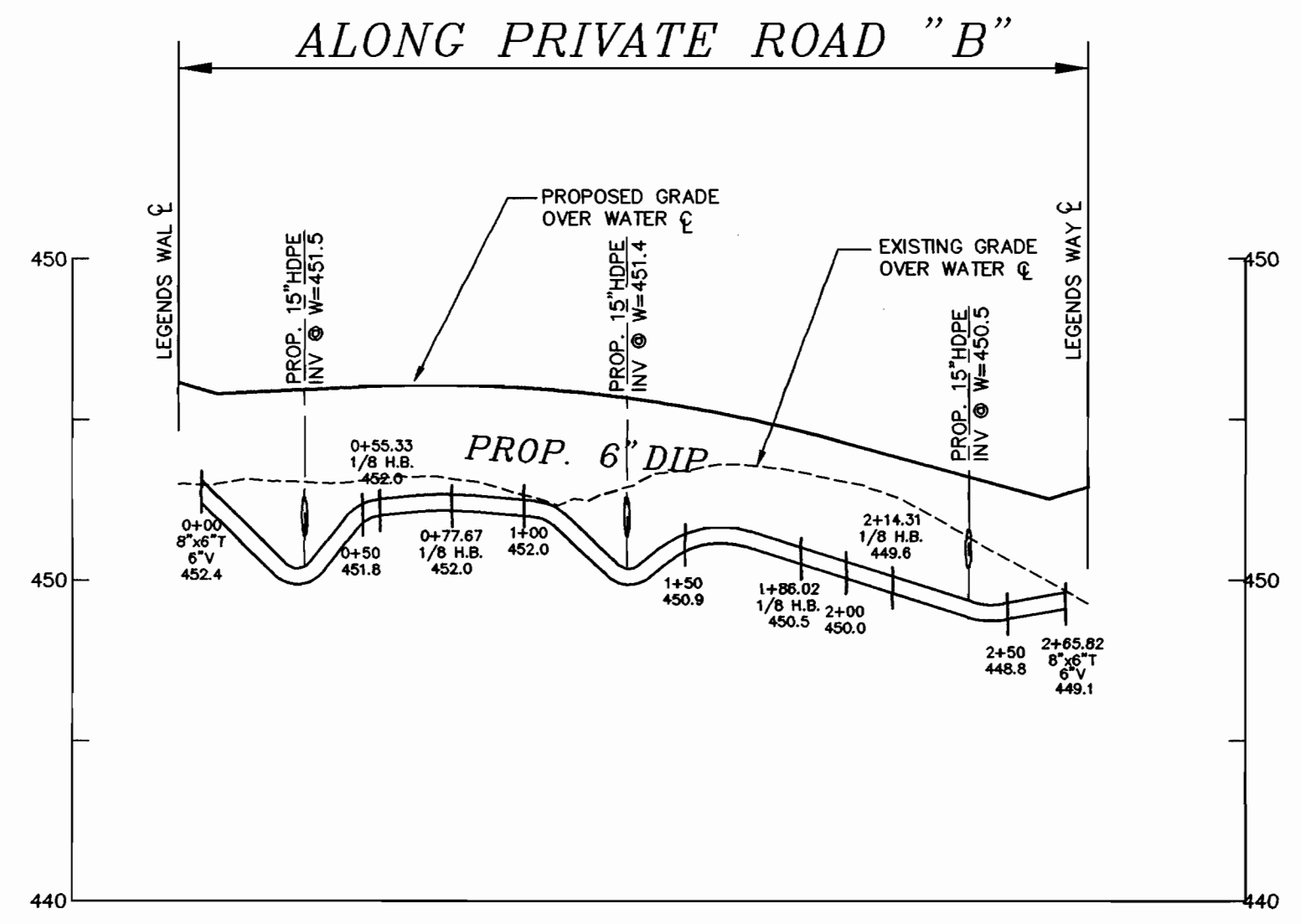
engineering	M.P.		
illustration	M.P.		
approval	J.M.		
project	98076		
date	JUNE 99		
	MMP	3	REVISED WATER & SEWER PROFILES AND SHC.
	BY	NO.	REVISION

**WATER AND SEWER MAIN PROFILES**  
DATE 600' SCALE MAP NO. 16 BLOCK NO. 12,18

THE LEGENDS AT TURF VALLEY, PHASE TWO  
LOTS 92 THRU 125  
PGCC DISTRICT, RESIDENTIAL SUBDISTRICT  
(PART OF POD D)  
CONTRACT 24-3548-D  
SECOND ELECTION DISTRICT  
HOWARD COUNTY

scale 1"=50'  
2 OF 2

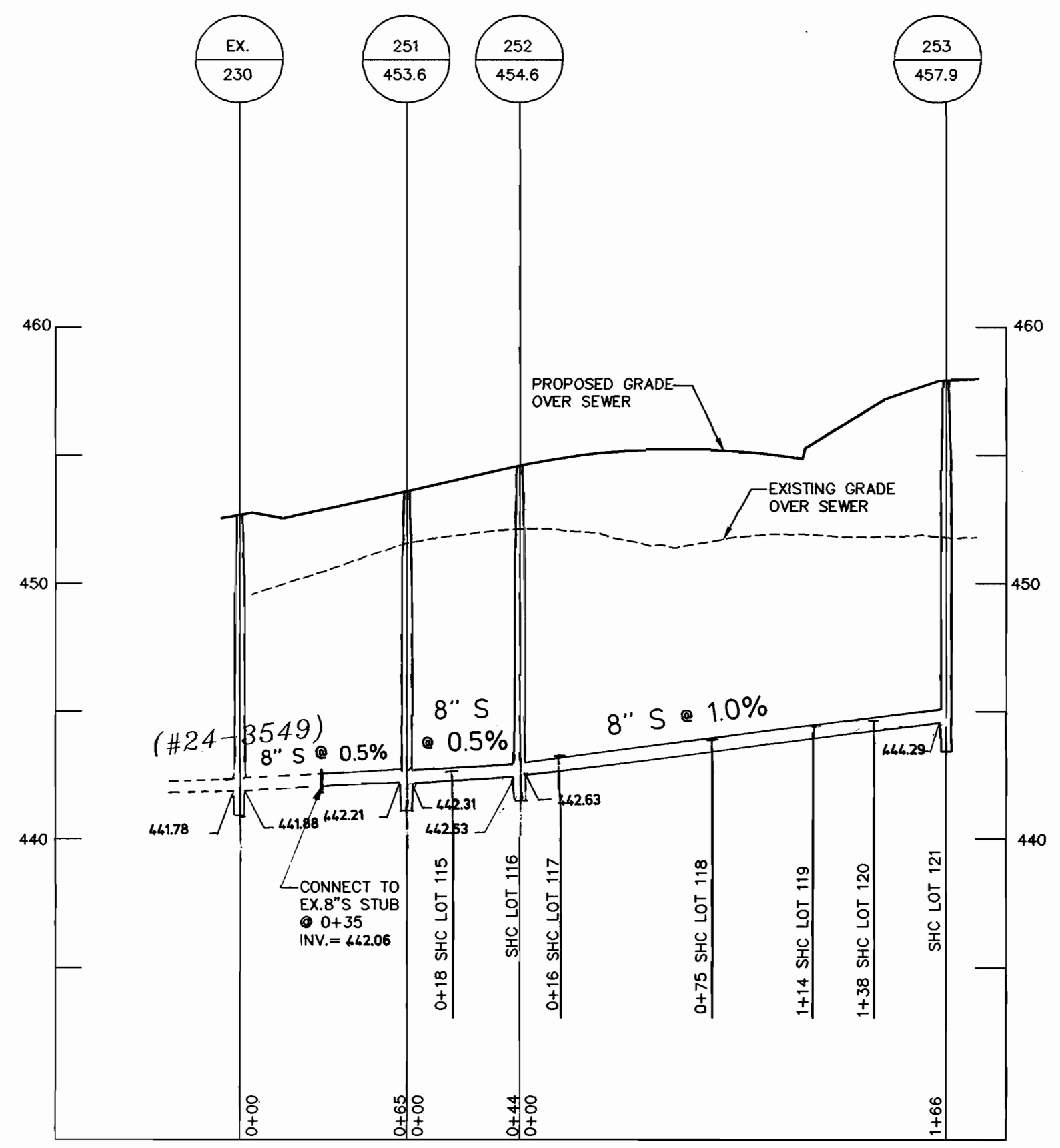
98076.DWG, V5-2.DWG



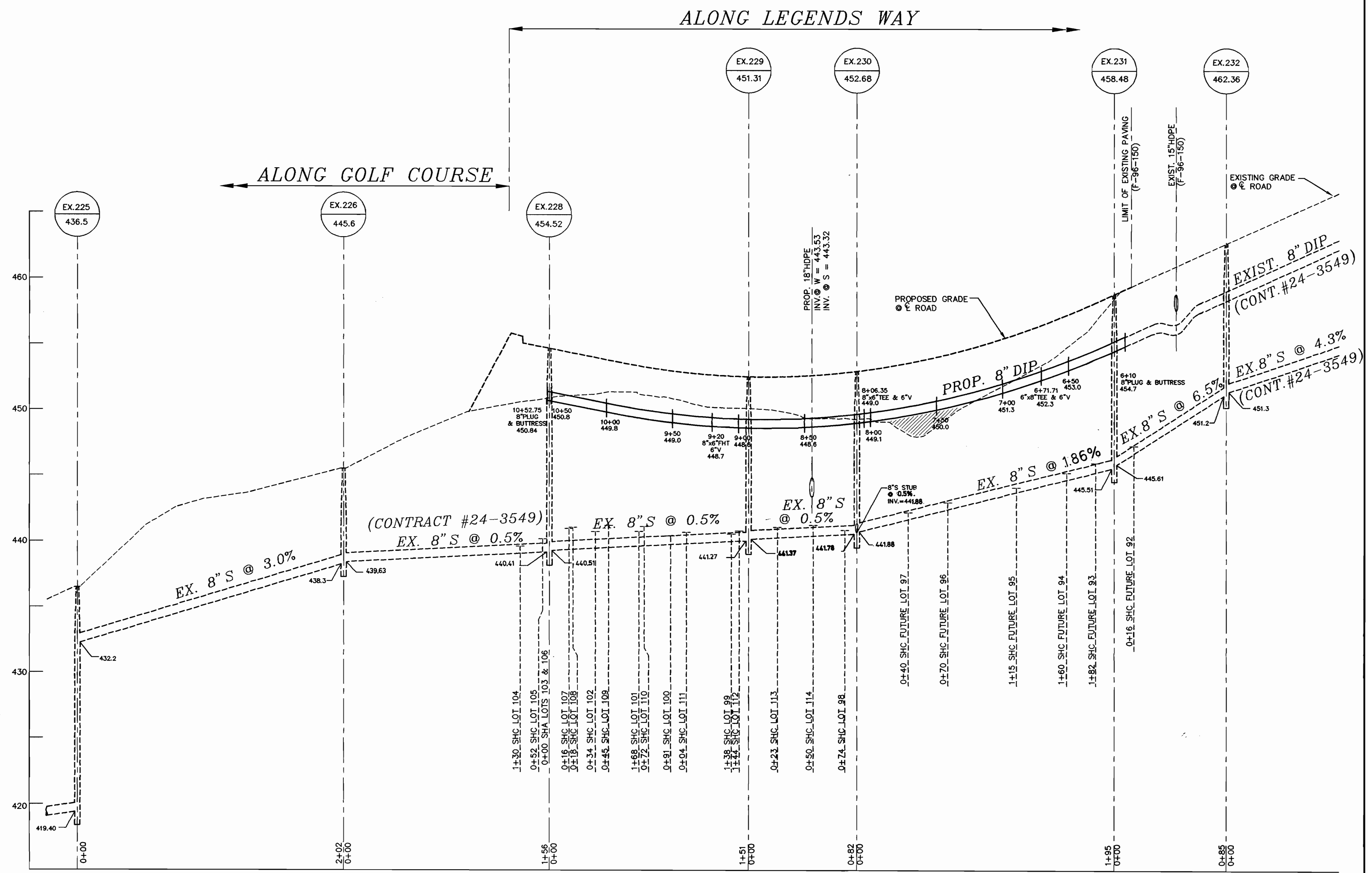
**WATER PROFILE**  
SCALE: HORIZ: 1"=50'  
VERT: 1"=5'

LOT	SHC INV. @ R/W	MIN. BSMT.	LOT	SHC INV. @ R/W	MIN. BSMT.
107*	442.16	447.28	92*	447.22	451.42
108*	442.17	447.29	93*	445.84	450.14
109*	442.41	447.21	94*	445.43	449.73
110*	442.34	447.24	95*	444.55	448.85
111*	441.90	446.50	96*	443.65	447.95
112*	442.00	446.60	97*	443.09	447.39
113*	442.36	446.96	98*	442.31	446.61
114*	442.49	447.09	99*	441.77	446.07
115	443.47	447.57	100*	441.64	445.14
116	443.30	447.40	101*	441.92	446.22
117	443.68	447.78	102*	441.85	446.25
118	444.25	448.35	103*	441.08	445.78
119	444.54	448.64	104*	440.85	445.55
120	444.78	448.88	105*	441.36	445.96
121	445.06	449.16	106*	441.68	446.58

\*NOTE: EXIST. SHC FROM CONT. # 24-3549 PHASE II



**SEWER PROFILE**  
SCALE: HORIZ: 1"=50'  
VERT: 1"=5'



**PROFILE**  
SCALE: HORIZ: 1"=50'  
VERT: 1"=5'

98076.DWG VAS-2.DWG

DEPARTMENT OF PUBLIC WORKS HOWARD COUNTY, MARYLAND Robert M. Berman 8-31-99 CHIEF, BUREAU OF UTILITIES DATE	DEPARTMENT OF PLANNING & ZONING HOWARD COUNTY, MARYLAND [Signature] 9/6/99 CHIEF, DEVELOPMENT ENGINEERING DIVISION DATE	<b>MILDENBERG, BOENDER &amp; ASSOC., INC.</b> Engineers Planners Surveyors 5072 Dorsey Hall Drive, Suite 202, Ellicott City, Maryland 21042 (410) 987-0286 Bal. (301) 621-5521 Wash. (410) 987-0286 Fax.	engineering M.P. illustration M.P. approval J.M. project 98076 date JUNE 99	BY NO. 3 REVISION REVISION	<b>WATER AND SEWER MAIN PROFILES</b>	THE LEGENDS AT TURF VALLEY, PHASE TWO LOTS 92 THRU 125 PGCC DISTRICT, RESIDENTIAL SUBDISTRICT (PART OF POD D) CONTRACT 24-3548-D SECOND ELECTION DISTRICT HOWARD COUNTY	scale 1"=50' 2 OF 2
--	--	---	---	----------------------------------	--------------------------------------	---	---------------------------

**QUANTITY TABLE**

ITEMS	QUANTITIES ESTIMATED	QUANTITIES	TYPE	MANUFACTURER/SUPPLIER
8" W DIP	443 L.F.	443 L.F.	CLASS 52	MC WANE, INC. A-1 PIPE
6" W DIP	293 L.F.	293 L.F.	CLASS 52	MC WANE, INC. A-1 PIPE
1 1/2" W DIP COPPER	215 L.F.	345 L.F.	TYPE K	READING TUBE U.S. FILTER
1" W DIP COPPER	540 L.F.	641 L.F.	TYPE K	READING TUBE U.S. FILTER
6" VALVE	3 EACH	3 EACH	RES WEDGE GATE	MOELLER CO. U.S. FILTER
8" VALVE	1 EACH	0	0	0
8" PLUG	1 EACH	1 EACH	DIP	UNION FOUNDRY U.S. FILTER
FIRE HYDRANT	1 EACH	1 EACH	A 423	MOELLER CO. U.S. FILTER
8" S (PVC)	273 L.F.	275 L.F.	SDR 35	J.M. M.F.C. U.S. FILTER
4" SHC (PVC)	214 L.F.	263 L.F.	SDR 35	J.M. M.F.C. U.S. FILTER
4" MANHOLE	3 EACH	3 EACH	PRECAST C-478	FREDRICK PRECAST, INC.

SURVEY AND DRAFTING DIVISION AS-BUILT DATE  
 NAME OF UTILITY CONTRACTOR: GAINES & COMPANY

**INDEX OF DRAWINGS**

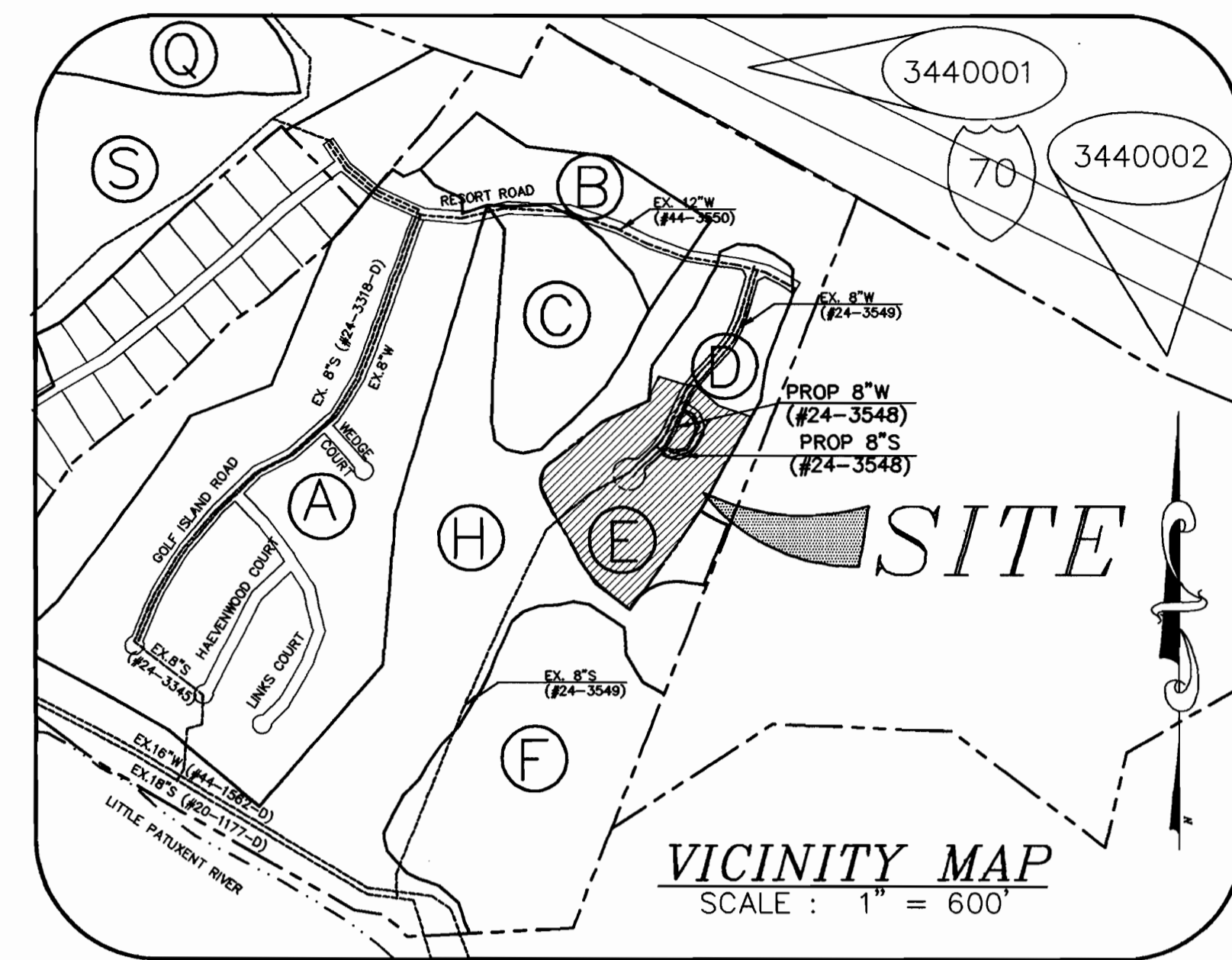
NO.	DESCRIPTION
1	TITLE SHEET & PLAN VIEW
2	WATER AND SEWER MAIN PROFILE

**PLAN REFERENCE NUMBERS**

FDP PGCC DISTRICT, RESIDENTIAL SUBDISTRICT  
 SP-93-14 F-96-151

**WATER AND SEWER MAIN EXTENSIONS  
 THE LEGENDS AT  
 TURF VALLEY**

**PGCC DISTRICT, RESIDENTIAL SUBDISTRICT  
 PHASE II - LOTS 92-125  
 2nd ELECTION DISTRICT  
 HOWARD COUNTY, MARYLAND  
 CONTRACT NO. 24-3548-D**



WATER AND SEWER CODE	COUNTY USE	TYPE OF BUILDING	RESIDENTIAL
WATER CODE: H07	780	DRAINAGE AREA:	LITTLE PATUXENT
TEST GRADIENT:	5992000	TREATMENT PLANT:	PATAPSCO VIA RTE 108
SEWER CODE:		PUMPING STATION:	
		NO. OF LOTS:	33
		BUILDABLE LOTS:	30 OPEN SPA.3
		NO. OF PROPOSED SHC:	7*
		NO. OF PROPOSED WHC:	30

**WATER NOTES**

- ALL WATER MAINS TO BE D.I.P. CLASS 52 UNLESS OTHERWISE NOTED.
- TOPS OF ALL WATER MAINS TO HAVE A MINIMUM OF 3-1/2" COVER UNLESS OTHERWISE NOTED.
- VALVES ADJACENT TO TEES SHALL BE STRAPPED TO TEES.
- ALL FITTINGS SHALL BE BUTTRESSED OR ANCHORED WITH CONCRETE IN ACCORDANCE WITH THE STANDARD DETAILS UNLESS OTHERWISE PROVIDED FOR ON THE DRAWINGS.
- FIRE HYDRANTS SHALL BE SET TO THE BURY LINE ELEVATIONS SHOWN ON THE DRAWINGS. ALL FIRE HYDRANTS SHALL BE STRAPPED AND BUTTRESSED WITH CONCRETE IN ACCORDANCE WITH STANDARD DETAILS. SOIL AROUND THE FIRE HYDRANT SHALL BE COMPACTED IN ACCORDANCE WITH SECTION 1000 AND 1005 OF THE STANDARD SPECIFICATIONS.
- THE CONTRACTOR SHALL NOT OPERATE ANY WATER MAIN VALVES ON THE EXISTING WATER SYSTEM.
- ALL WATER HOUSE CONNECTIONS SHALL BE FOR INSIDE METER SETTING UNLESS OTHERWISE NOTED ON PLANS OR IN SPECIFICATIONS.

**SEWER NOTES**

- ALL SEWER MAINS SHALL BE P.V.C. OR D.I.P. UNLESS OTHERWISE NOTED.
- ALL MANHOLES SHALL BE 4'-0" INSIDE DIAMETER UNLESS OTHERWISE NOTED.
- FORCE MAINS SHALL BE D.I.P. ONLY.
- MANHOLES SHOWN WITH 12" AND 16" WALLS ARE FOR BRICK MANHOLES ONLY.
- MANHOLES DESIGNATED W.T. IN PLAN AND PROFILE SHALL HAVE WATER-TIGHT FRAME AND COVERS, STANDARD DETAIL C5.52. WHERE WATER-TIGHT MANHOLE FRAME AND COVER IS USED, SET TOP OF FRAME 1' - 8" ABOVE FINISHED GRADE UNLESS OTHERWISE NOTED ON THE DRAWINGS.
- HOUSE(S) WITH THE SYMBOL "C.N.S." INDICATES THAT CELLAR CANNOT BE SERVED.

SEDIMENT CONTROL MEASURES FOR THIS CONTRACT WILL BE IMPLEMENTED IN ACCORDANCE WITH SECTION 219 OF THE HOWARD COUNTY DESIGN MANUAL AND STANDARDS AND IN DEVELOPING AREAS AND ALSO AS SHOWN ON THE GRADING (F-96-151 & F-98-91)

REVIEWED FOR HOWARD COUNTY SOIL CONSERVATION DISTRICT AND MEETS TECHNICAL REQUIREMENTS.

*Robert M. Benjamin* 9/13/99  
 U.S. NATURAL RESOURCES CONSERVATION SERVICE DATE:

THIS DEVELOPMENT PLAN IS APPROVED FOR SOIL EROSION AND SEDIMENT CONTROL BY THE SOIL CONSERVATION DISTRICT.

*Shirley K. Ritten* 9/13/99  
 DATE:

**GENERAL NOTES**

- APPROXIMATE LOCATION OF EXISTING MAINS ARE SHOWN. THE CONTRACTOR SHALL TAKE ALL NECESSARY PRECAUTIONS TO PROTECT EXISTING MAINS AND SERVICES AND MAINTAIN UNINTERRUPTED SUPPLY. ANY DAMAGE INCURRED SHALL BE REPAIRED IMMEDIATELY TO THE SATISFACTION OF THE ENGINEER AT THE CONTRACTOR'S EXPENSE.
- ALL HORIZONTAL CONTROLS ARE BASED ON MARYLAND STATE COORDINATES.
- ALL VERTICAL CONTROLS ARE BASED ON U.S.G.S. DATA.
- ALL PIPE ELEVATIONS SHOWN ARE INVERT ELEVATIONS.
- CLEAR ALL UTILITIES BY A MINIMUM OF 6". CLEAR ALL POLES BY 2'-0" MINIMUM OR TUNNEL REQUIRED. THE OWNER HAS CONTACTED THE UTILITY COMPANIES AND HAS MADE ARRANGEMENTS FOR BRACING OF POLES AS SHOWN ON THE DRAWINGS. IN THE EVENT THE CONTRACTOR'S WORK REQUIRES THE BRACING OF ADDITIONAL POLES, ANY COST INCURRED BY THE OWNER FOR BRACING OF ADDITIONAL POLES OR DAMAGES SHALL BE DEDUCTED FROM MONEY OWED THE CONTRACTOR. THE CONTRACTOR SHALL COORDINATE WITH THE UTILITY COMPANIES TO SCHEDULE THE BRACING OF THE POLES.
- FOR DETAILS NOT SHOWN ON THE DRAWINGS, AND FOR MATERIALS AND CONSTRUCTION METHODS USE HOWARD COUNTY DESIGN MANUAL, VOLUME IV, STANDARD SPECIFICATIONS AND DETAIL FOR CONSTRUCTION (LATEST EDITION). THE CONTRACTOR SHALL HAVE A COPY OF VOLUME IV ON THE JOB.
- WHERE TEST PITS HAVE BEEN MADE ON EXISTING UTILITIES, THEY ARE NOTED BY THE SYMBOL AT THE LOCATION OF THE TEST PIT. A NOTE OR NOTES CONTAINING THE RESULTS OF THE TEST PIT OR PITS IS INCLUDED ON THE DRAWINGS. EXISTING UTILITIES IN THE VICINITY OF THE PROPOSED WORK FOR WHICH TEST PITS HAVE NOT BEEN DUG SHALL BE LOCATED BY THE CONTRACTOR TWO WEEKS IN ADVANCE OF CONSTRUCTION OPERATIONS AT HIS OWN EXPENSE.
- CONTRACTOR SHALL NOTIFY THE FOLLOWING UTILITY COMPANIES OR AGENCIES AT LEAST FIVE WORKING DAYS BEFORE STARTING WORK SHOWN ON THESE PLANS:  
 AT & T (410) 865-3803  
 BG & E CO. CONTRACTOR SERVICES (410) 850-4620  
 BG & E CO. UNDERGROUND DAMAGE CONTROL (410) 787-9068  
 HOWARD COUNTY DEPARTMENT OF PUBLIC WORKS (410) 313-4900  
 BUREAU OF UTILITIES (BPW) (410) 313-4900  
 MISS UTILITY (410) 257-7777  
 COLOMBIA PIPELINE CO. (410) 796-1394  
 STATE HIGHWAY ADMINISTRATION (410) 531-5533
- TREES AND SHRUBS ARE TO BE PROTECTED FROM DAMAGE TO THE MAXIMUM EXTENT. TREES AND SHRUBS LOCATED WITHIN THE CONSTRUCTION STRIP ARE NOT TO BE REMOVED OR DAMAGED BY THE CONTRACTOR.
- CONTRACTOR SHALL REMOVE TREES, STUMPS AND ROOTS ALONG LINE OF EXCAVATION. PAYMENT FOR SUCH REMOVAL SHALL BE INCLUDED IN THE UNIT PRICE BID FOR CONSTRUCTION OF THE MAIN.
- THE CONTRACTOR SHALL NOTIFY THE BUREAU OF HIGHWAYS, HOWARD COUNTY, AT (410) 313-2450 AT LEAST FIVE (5) WORKING DAYS BEFORE ANY OPEN CUT OF ANY COUNTY ROAD OR BORING/JACKING OPERATION IN COUNTY ROADS FOR LAYING WATER/SEWER MAINS OR HOUSE CONNECTIONS. THE APPROVAL OF THESE DRAWINGS WILL CONSTITUTE COMPLIANCE WITH DPW REQUIREMENTS PER SECTION 18.114 (a) OF THE HOWARD COUNTY CODE.
- PROVIDE 10' HORIZONTAL DISTANCE BETWEEN THE WATER AND SEWER HOUSE CONNECTION.

DEPARTMENT OF PUBLIC WORKS  
 HOWARD COUNTY, MARYLAND

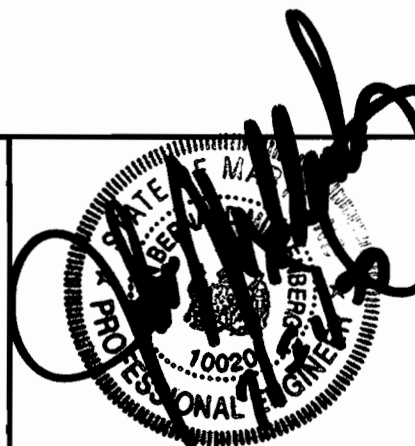
DEPARTMENT OF PLANNING & ZONING  
 HOWARD COUNTY, MARYLAND

**MILDENBERG, BOENDER & ASSOC., INC.**  
 Engineers Planners Surveyors

5072 Dorsy Hall Drive, Suite 202, Elkton City, Maryland 21042  
 (410) 997-0296 Balt. (301) 621-5521 Wash. (410) 997-0298 Fax

*Robert M. Benjamin* 8-31-99  
 CHIEF, BUREAU OF UTILITIES DATE

*Shirley K. Ritten* 9/13/99  
 CHIEF, DEVELOPMENT ENGINEERING DIVISION DATE



engineering	M.P.	illustration	M.P.	approval	J.M.
project	98078	K.C.I.	4	AS-BUILT CONDITIONS ADDED TO PLAN	7/24/00
date	JUNE 99	MP	3	REVISED LOT LAYOUT, WHC, SHC AND WATER & SEWER MAINS IN PRIVATE ROAD	
BY	NO.	REVISION			

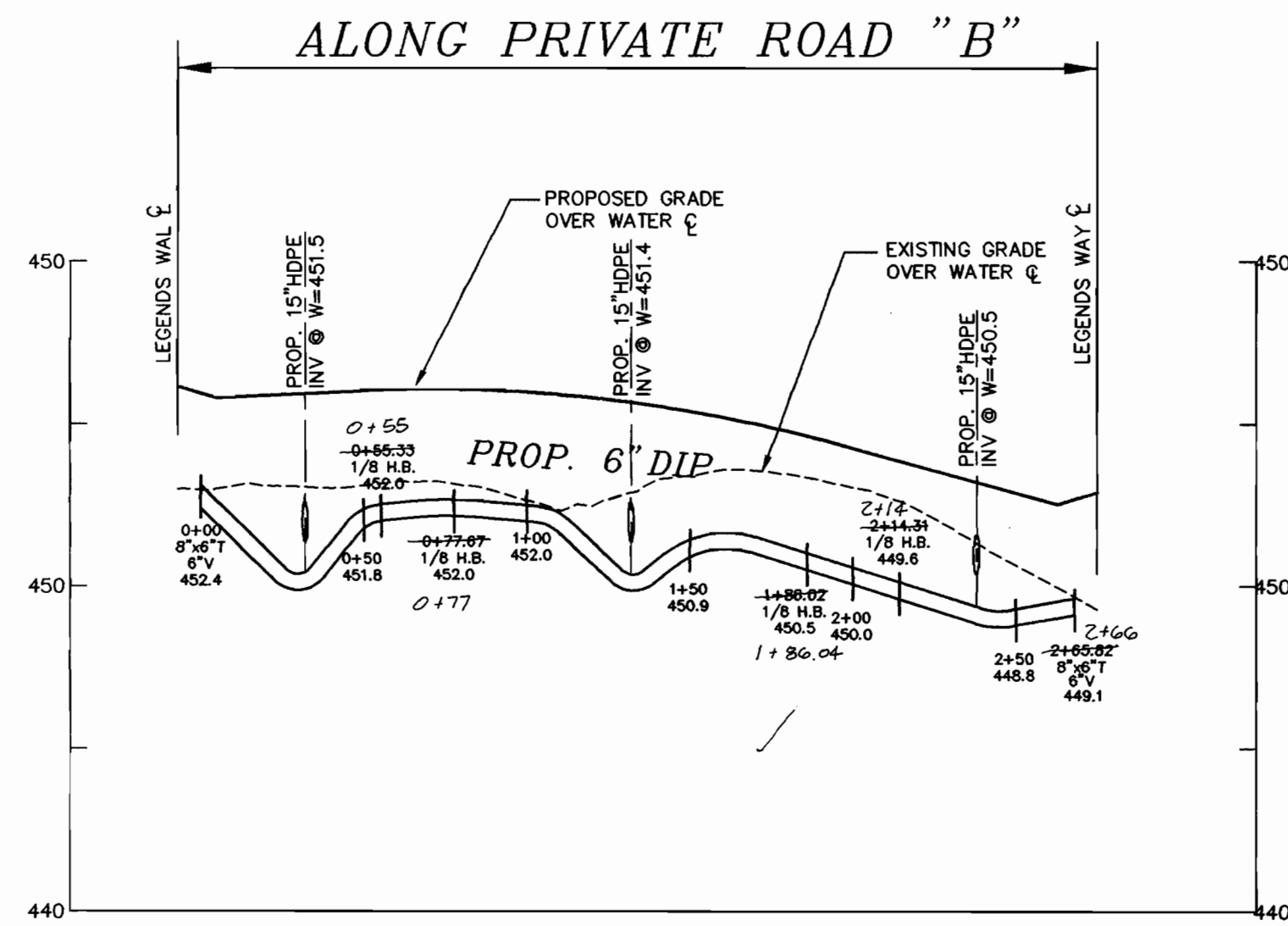
**TITLE SHEET  
 WATER AND SEWER  
 PLAN**

600' SCALE MAP NO. 16 BLOCK NO. 12, 18

THE LEGENDS AT TURF VALLEY, PHASE TWO  
 LOTS 92 THRU 125  
 PGCC DISTRICT, RESIDENTIAL SUBDISTRICT  
 (PART OF POD D)  
 CONTRACT 24-3548-D  
 SECOND ELECTION DISTRICT  
 HOWARD COUNTY

scale  
 1"=50'  
 1 of 2

98078/DWG/AS-BUILT

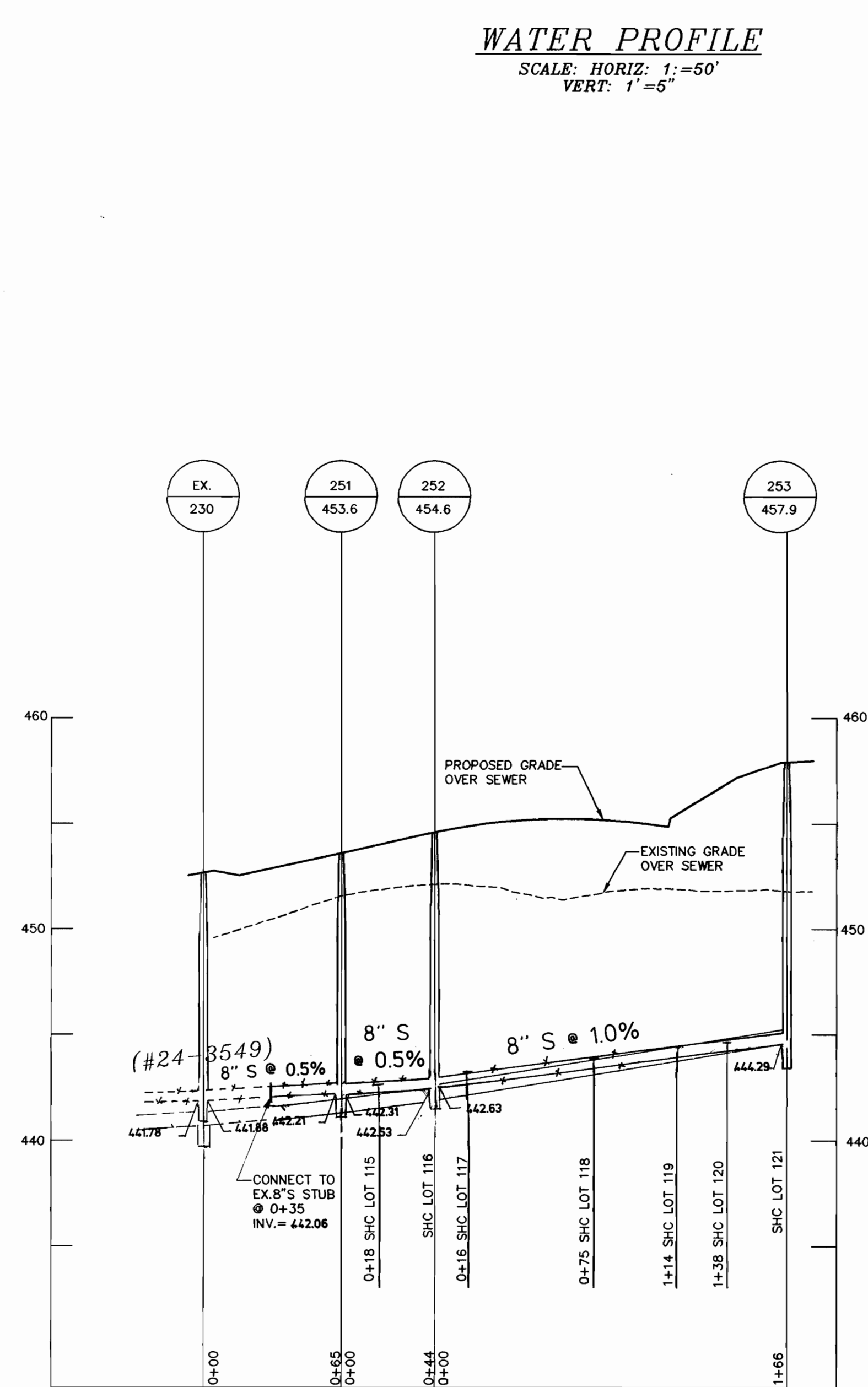


**WATER PROFILE**  
SCALE: HORIZ. 1"=50'  
VERT. 1"=5'

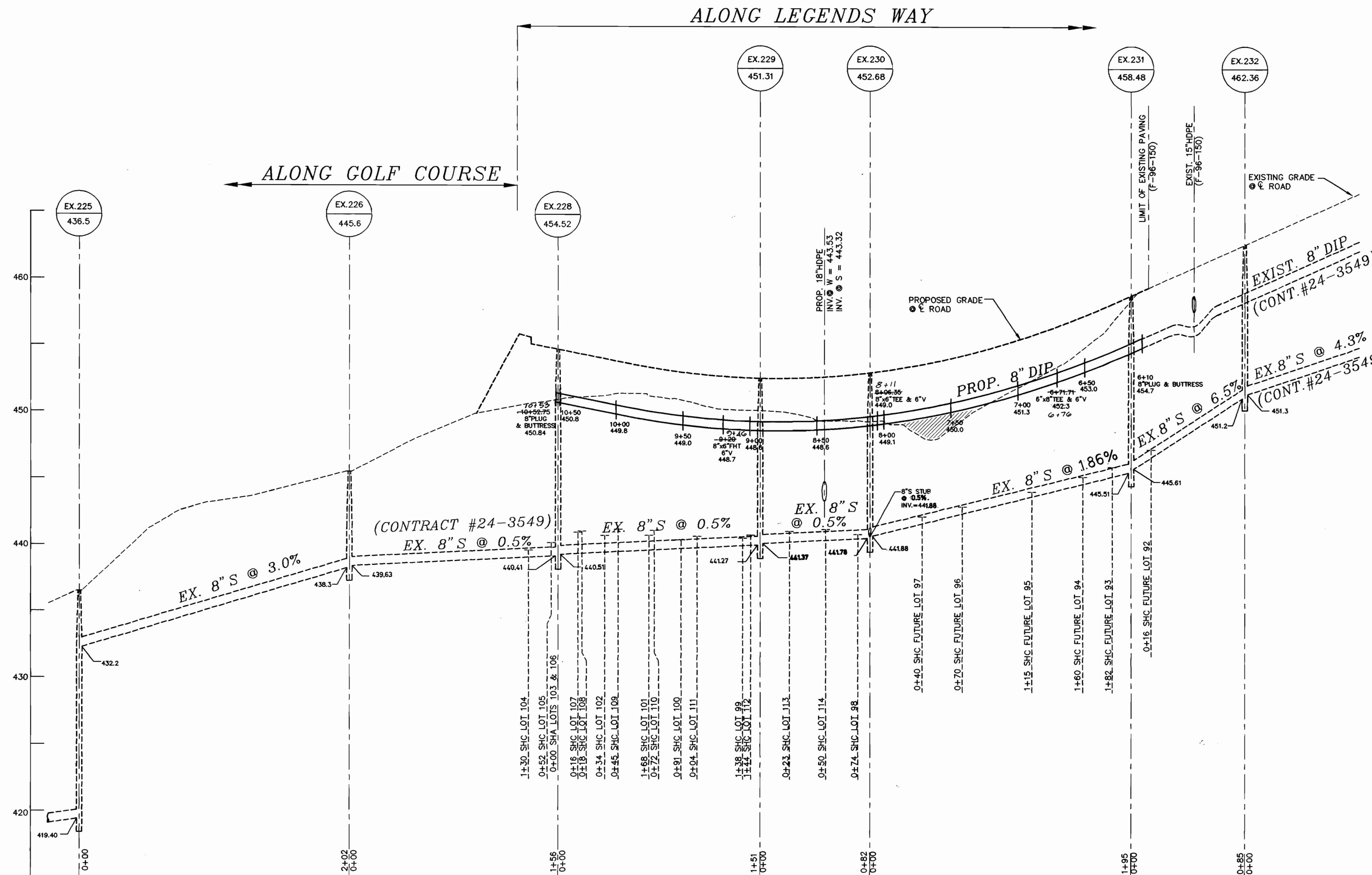
LOT	SHC INV. @ R/W	MIN. BSMT.
107*	442.16	447.28
108*	442.19	447.29
109*	442.41	447.21
110*	442.34	447.24
111*	441.90	446.50
112*	442.00	446.60
113*	442.36	446.96
114*	442.49	447.09
115	443.47	447.57
116	443.30	447.40
117	443.68	447.78
118	444.25	448.35
119	444.54	448.64
120	444.78	448.88
121	445.06	449.16

LOT	SHC INV. @ R/W	MIN. BSMT.
92*	447.22	451.42
93*	445.84	450.14
94*	445.43	449.73
95*	444.55	448.85
96*	443.65	447.95
97*	443.09	447.39
98*	442.31	446.61
99*	441.77	446.07
100*	441.64	445.14
101*	441.92	446.22
102*	441.85	446.25
103*	441.08	445.78
104*	440.85	445.55
105*	441.36	445.96
106*	441.68	446.58

\*NOTE: EXIST. SHC FROM CONT. # 24-3549 PHASE II



**SEWER PROFILE**  
SCALE: HORIZ. 1"=50'  
VERT. 1"=5'



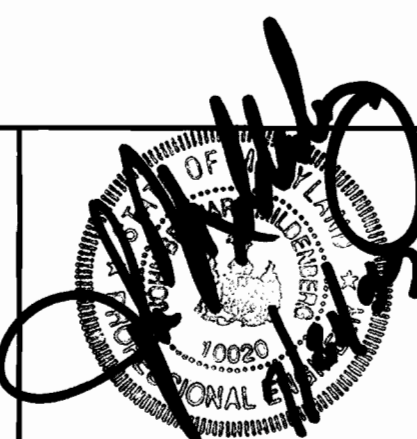
**PROFILE**  
SCALE: HORIZ. 1"=50'  
VERT. 1"=5'

98076.DWG \ WS-2.DWG

DEPARTMENT OF PUBLIC WORKS  
HOWARD COUNTY, MARYLAND  
*Robert M. Bauman* 8-31-99  
CHIEF, BUREAU OF UTILITIES DATE

DEPARTMENT OF PLANNING & ZONING  
HOWARD COUNTY, MARYLAND  
*John J. Bauman* 9/6/99  
CHIEF, DEVELOPMENT ENGINEERING DIVISION DATE

**MILDENBERG, BOENDER & ASSOC., INC.**  
Engineers Planners Surveyors  
5072 Dorsey Hall Drive, Suite 202, Ellicott City, Maryland 21042  
(410) 997-0296 Dail (301) 621-6521 Wash. (410) 997-0298 Fax



engineering	M.P.				
illustration	M.P.				
approval	J.M.				
project	K.E.I.	4	ASBUILT CONDITIONS ADDED TO PLAN.	7/21/99	
project	MMP	3	REVISED WATER & SEWER PROFILES AND SHC.	11/17/99	
date	JUNE 99	BY NO.	REVISION	DATE	600' SCALE MAP NO. 16 BLOCK NO. 12.18

**WATER AND SEWER  
MAIN PROFILES**

THE LEGENDS AT TURF VALLEY, PHASE TWO  
LOTS 92 THRU 125  
PGCC DISTRICT, RESIDENTIAL SUBDISTRICT  
(PART OF POD D)  
CONTRACT 24-3548-D  
SECOND ELECTION DISTRICT  
HOWARD COUNTY  
scale 1"=50'  
**2 OF 2**