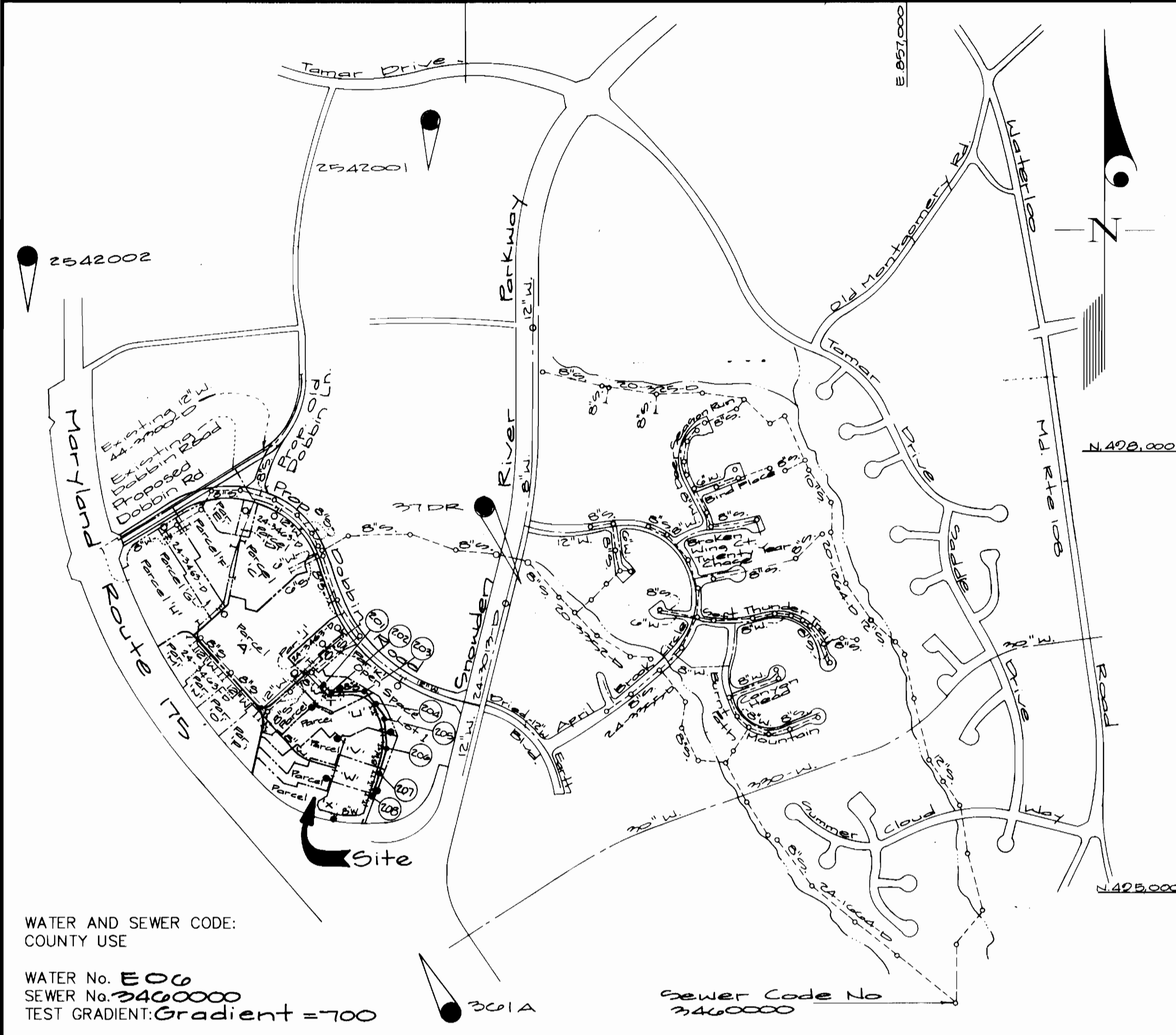


QUANTITIES				
ITEMS	QUANTITIES ESTIMATED	AS-BUILT		
		QUANTITIES	TYPE	MANUFACTURER/SUPPLIER
8" Water	2732 LF	2766 LF	CL 52 DIP	Griffin Pipe Products
6" Water	102 LF	248 LF	CL 52 DIP	Griffin Pipe Products
Fire Hydrant V.	7 ea.	7 EA		Mueller/BRS
8" Valves	3 ea.	3 EA	Gate	Mueller/BRS
6" Valves	3 ea.	3 EA	Gate	Mueller/BRS
8" - 1/16 H.B.	6 ea.	5 EA	M.J.	Griffin Pipe Products
8" - 1/8 H.B.	6 ea.	6 EA	M.J.	Griffin Pipe Products
6" Cap & Buttress	5 ea.		M.J.	Griffin Pipe Products
8" Sewer	1036 LF	1023 LF	SDR 35	J.M. Manufacturing/BRS
4" Manholes	6 ea.	8 EA	Concrete	Atlantic Concrete
6" SHC	102 LF	102 LF	SDR 35	J.M. Manufacturing/BRS
6" Cap & Buttress	2 ea.	2 EA	M.J.	Griffin Pipe Products
6" x 6" Tee	1 ea.	1 EA	M.J.	Griffin Pipe Products
6" x 6" Tee	5 ea.	5 EA	M.J.	Griffin Pipe Products
Clean out	5 ea.	5 EA		Capital Foundry/BRS

NAME OF UTILITY CONTRACTOR: FALLSTON UTILITIES

SURVEY AND DRAFTING DIV. CHECKBOX: AS-BUILT DATE:



VICINITY MAP
SCALE: 1"=600'

CONTRACT No. 24-3541-D
Route 175 Commercial
Section I, Area I
Parcels 'T' Thru 'X'
HOWARD COUNTY, MARYLAND
DEPARTMENT OF PUBLIC WORKS

TYPE OF BUILDING	Commercial
NUMBER OF UNITS	5 Parcels / 5 Buildings
NUMBER OF S.H.C.'s	5
NUMBER OF W.H.C.'s	5
DRAINAGE AREA	Dorsey Run
TREATMENT PLANT	Little Patuxent Water Reclamation Plant

GENERAL NOTES

- PART I
- Approximate location of existing mains are shown. The contractor shall take all necessary precautions to protect existing mains and services and maintain uninterrupted supply. Any damage incurred shall be repaired immediately to the satisfaction of the Engineer at the Contractor's expense.
 - All horizontal controls are based on Maryland State Coordinates [North American Datum 1983 (NAD '83)].
 - All vertical controls are based on U.S.G.S. data.
 - All pipe elevations shown are invert elevations.
 - Clear all utilities by a minimum of 6". Clear all poles by 2'-0" minimum or tunnel as required. The owner has contacted the utility companies and has made arrangements for bracing of poles as shown on the drawings. In the event the contractor's work requires the bracing of additional poles, any cost incurred by the owner for bracing of additional poles or damages shall be deducted from money owed the contractor. The contractor shall coordinate with the utility companies to schedule the bracing of the poles.
 - For details not shown on the drawings, and for materials and construction methods use Howard County Design Manual, Volume IV, Standard Specifications and Detail for Construction (Latest Edition). The contractor shall have a copy of Volume IV on the job.
 - Where test pits have been made on existing utilities, they are noted by the symbol [square with X] at the location of the test pit. A note or notes containing the results of the test pit or pits is included on the drawings. Existing utilities in the vicinity of the proposed work for which test pits have not been dug shall be located by the contractor two weeks in advance of construction operations at his own expense. Contractor shall notify the following utility companies or agencies at least (5) working days before starting work shown on these plans:

State Highway Administration	531-5533
BGE Contractor Services	850-4620
BGE Under Ground Damage Control	787-9068
Miss Utility	1-800-257-7777
Colonial Pipeline Co.	795-1390
Howard County Department of Public Works Bureau of Utilities	313-4900
 - Trees and shrubs are to be protected from damage to maximum extent. Trees and shrubs located within the construction strip are not to be removed or damaged by the contractor.
 - Contractor shall remove trees, stumps and roots along line of excavation. Payment for such removal shall be included in the unit price bid for construction of the main.
 - The contractor shall notify the Bureau of Highways, Howard County, at (410) 313-2450 at least five (5) working days before any open cut or any County road or boring/jacking operation on County roads for laying water/sewer mains or house connections. The approval of these drawings will constitute compliance with DPW requirement per Section 18.114(a) of the Howard County Code.
 - All water and sewer mains shown on this plan are public.
- PART II - WATER
- All water mains to be D.I.P. Class 52 unless otherwise noted.
 - Tops of all water mains to have a minimum of 3'-1/2' cover unless otherwise noted.
 - Valves adjacent to tees shall be strapped to tees.
 - All fittings shall be buttressed or anchored with concrete in accordance with the Standard Details unless otherwise provided for on the drawings.
 - Fire hydrants shall be set to the bury line elevations shown on the drawings. All fire hydrants shall be restrained and buttressed with concrete in accordance with the Standard Details. Soil around the fire hydrant shall be compacted in accordance with Section 1000 and 1005 of the Standard Specifications.
 - The contractor shall not operate any water main valves on the existing water system.
 - All water house connections shall be for inside meter setting unless otherwise noted on plans or in specifications.
 - For sprinkler system for all townhomes or multi-family dwelling units should have a minimum of 1" connection with a 3/4" meter.
- PART III - SEWER
- All sewer mains shall be DIP and P.V.C. unless otherwise noted.
 - All manholes shall be 4' - 0" inside diameter unless otherwise noted.
 - Force mains shall be D.I.P. only.
 - Manholes shown with 12" and 16" walls are for brick manholes only. Manholes designated W.T. in plan and profile shall have watertight frame and covers, Standard Detail G5.52. Where watertight frame and cover is used, set top of frame 1'-6" above finished grade unless otherwise noted on drawings.
 - House(s) with the symbol "C.N.S." indicates that cellar cannot be served.

- Bench Mark**
Description
Station 2542001 (concrete monument)
Elev. 420.071 (For Vertical Control Only)
Station is located on B. & E. Transmission Lines 1000' ± SW. of Dobbin Road
- Bench Mark**
Description
Station 2542002 (concrete monument)
Elev. 202.023 (For Vertical Control Only)
Station is located 1000' ± West of Rte. 175 on Transmission Line at G. & E. Tower 10-E near Hanovers Restaurant entrance
- Bench Mark**
Description
Station 37DR (1/4" rebar)
N. 10° 28' 11.704, E. 410° 50' 7.155 (For Horizontal Control Only)
Station is located 0.45 ± miles north of Rte. 175 and 40' ± East of the East curb of Snowden River Pkwy.
- Bench Mark**
Description
Station 301A (concrete monument)
N. 10° 22' 05.920, E. 410° 33' 51.119 (For Horizontal Control Only)
Station is located at the Southeast corner of the intersection of Snowden River Parkway and Rte. 175 3' ± from curb and 57' ± from end of guardrail

Sediment Control Measures will be implemented in accordance with Section 219 of the Specifications & with Road Drawings Plan F-20-41, Drawings for Sediment & Erosion Control, GF 06-43 and GPP 07-142.

REVIEWED FOR HOWARD SOIL CONSERVATION DISTRICT AND MEETS TECHNICAL REQUIREMENT.

U.S.D.A. NATURAL RESOURCES CONSERVATION SERVICE
THIS DEVELOPMENT PLAN IS APPROVED FOR SOIL EROSION AND SEDIMENT CONTROL BY THE HOWARD SOIL CONSERVATION DISTRICT.

APPROVED:
[Signature] DATE: 6/17/97

DEPARTMENT OF PUBLIC WORKS
HOWARD COUNTY, MARYLAND
[Signature] 6-13-97
CHIEF, BUREAU OF UTILITIES

DEPARTMENT OF PLANNING AND ZONING
HOWARD COUNTY, MARYLAND
[Signature] 6/17/97
CHIEF, DEVELOPMENT ENGINEERING DIVISION

GLW GUTSCHICK LITTLE & WEBER, P.A.
CIVIL ENGINEERS, SURVEYORS, PLANNERS, LANDSCAPE ARCHITECTS
3909 NATIONAL DRIVE - SUITE 250 - BURTONSVILLE OFFICE PARK - BURTONSVILLE, MARYLAND 20866
TEL: (410) 880-1820 ~ FAX: (301) 421-4186

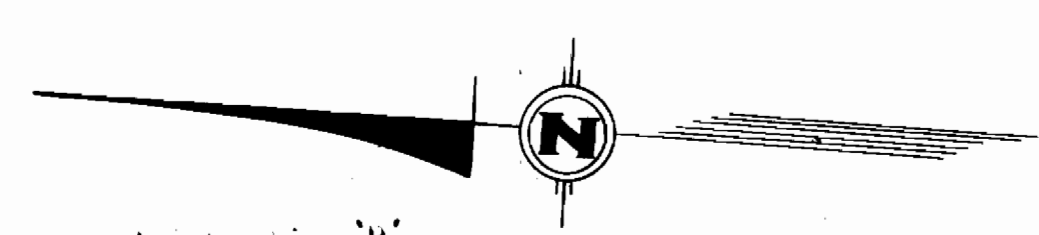
DES. GAH				
WSJ				
DRN. CLB				
GAH				
CHK: M.J.T.				
DATE: April 1997	REV. BY	NO	REVISION	DATE
	dev	Δ	revise quantities (estimated)	7/20/97

Title sheet
600' SCALE MAP NO. 36 BLOCK NO. 18

Water & Sewer As-Builts
Route 175 Commercial
Section I, Area I
Parcels 'T' Thru 'X'
Sixth Election District - Howard Co., Maryland
Contract No.: 24-3541-D

GLW FILE No. 95003

SCALE AS SHOWN
SHEET 1 OF 2



Water Line 'b'
As-Built

From	To	Dist
Fire Hydrant	6" F.H. Valve	14'
SD Inlet	6" F.H. Valve	37'
F.H.	End 8" Main	13'
6" F.H. Valve	End 8" Main	11'

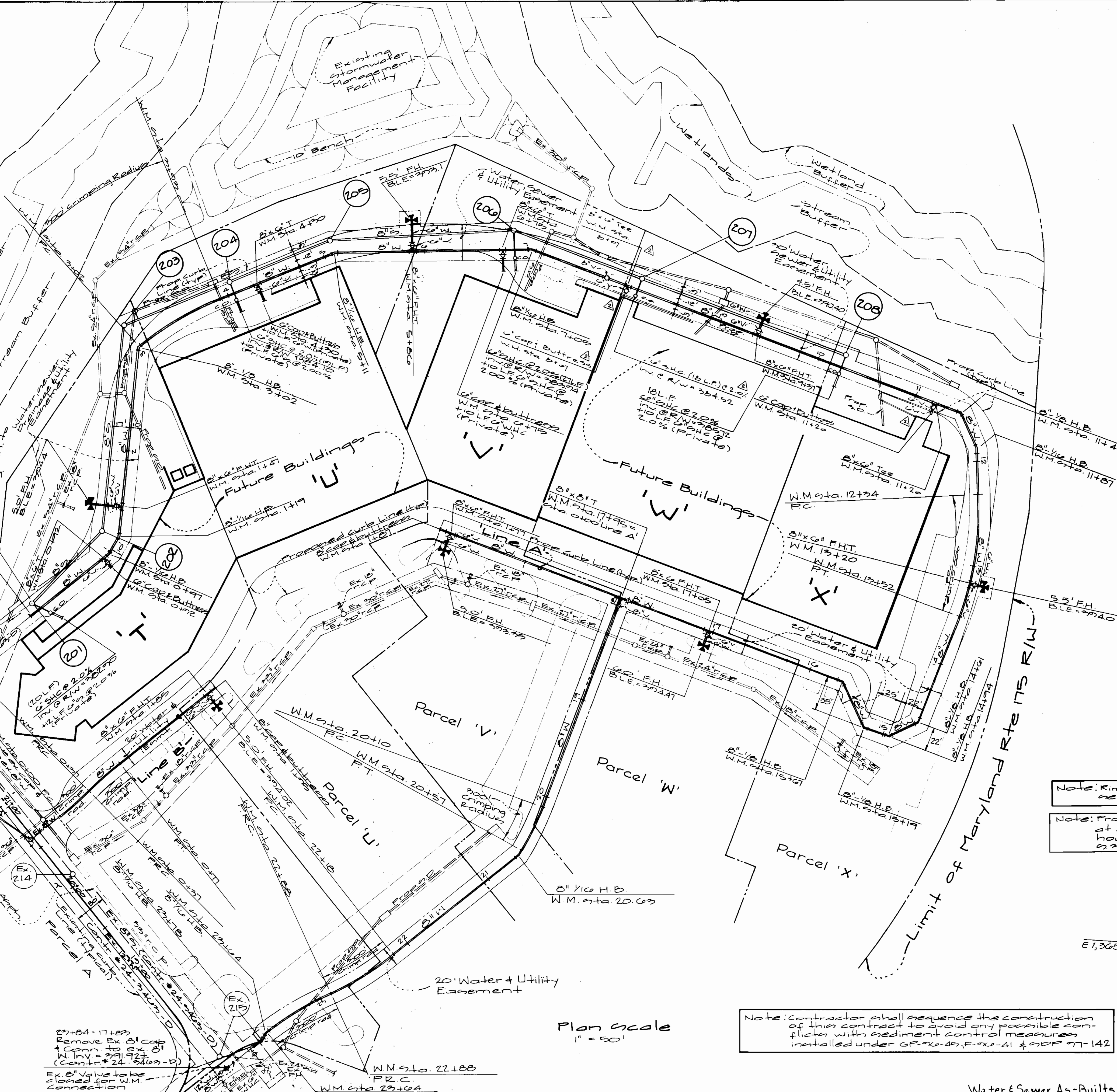
Sewer/Water Line 'A'

MH 201	Sewer C.O. Parcel T	21'
MH 201	End SHC Parcel T	34'
MH 201	6" Valve Parcel T	81'
MH 201	End WHC Parcel T	90'
MH 202	6" Valve Parcel T	30'
MH 202	End WHC Parcel T	51'
MH 202	Sewer C.O. Parcel T	95'
MH 202	End SHC Parcel T	91'
MH 202	6" F.H. Valve	29'
MH 202	6" F.H. Valve	27'
SD Inlet	C.O. Parcel U	50'
SD Inlet	End SHC Parcel U	55'
SD Inlet	6" Valve Parcel U	64'
SD Inlet	End WHC Parcel U	41'
MH 204	End WHC Parcel U	53'
MH 204	6" Valve Parcel U	25'
MH 204	C.O. Parcel U	21'
MH 204	End SHC Parcel U	43'
MH 205	6" F.H. Valve	77'

From	To	Dist.
F.H.	6" F.H. Valve	21'
F.H.	6" Valve Parcel V	34'
F.H.	End at WHC Parcel V	108'
F.H.	End SHC Parcel V	125'
F.H.	C.O. Parcel V	112'
MH 202	6" Valve Parcel V	50'
MH 206	6" Valve Parcel V	46'
MH 206	End WHC Parcel V	55'
MH 206	End SHC Parcel V	90'
SD Inlet	6" Valve Parcel W	21'
SD Inlet	6" Valve Parcel W	45'
SD Inlet	C.O. Parcel W	53'
SD Inlet	End SHC Parcel W	55'
SD Inlet	End WHC Parcel W	49'
MH 207	6" In-line Valve	58'
MH 207	6" Valve Parcel W	18'
MH 207	End WHC Parcel W	28'
MH 207	C.O. Parcel W	17'
MH 207	End SHC Parcel W	22'
F.H.	6" F.H. Valve	18'
F.H.	C.O. Parcel X	92'
F.H.	End at SHC Parcel X	106'
MH 208	6" F.H. Valve	89'
MH 208	C.O. Parcel X	13'
MH 208	End SHC Parcel X	55'
MH 208	6" Valve Parcel X	35'
MH 208	End WHC Parcel X	97'
SD Inlet	6" Valve Parcel X	23'
SD Inlet	End WHC Parcel X	54'

Note: Contractor is responsible for replacing existing paving and/or curb & gutter removed during construction of proposed 8" Watermain. See Howard County std G4.01

From	To	Dist.
F.H. 134+00	6" F.H. Valve	12'
F.H. 134+00	6" F.H. Valve	10'
SD MH 134+00	6" F.H. Valve	47'
From	To	Dist.
SD MH	6" Valve 11+32	90'
F.H. 134+00	6" Valve 11+34	32'
SD MH	6" Valve 11+92	73'



Note: Rim of Manholes to be set as indicated on profiles

Note: Provide 6" lamphole clean out at easement line for all sewer house connections see detail 9.221

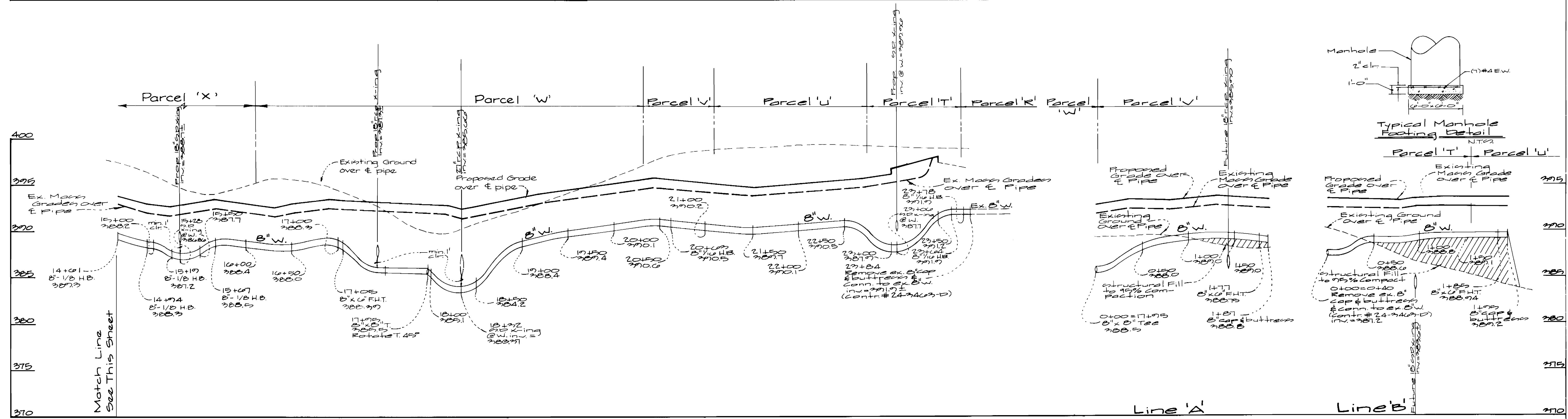
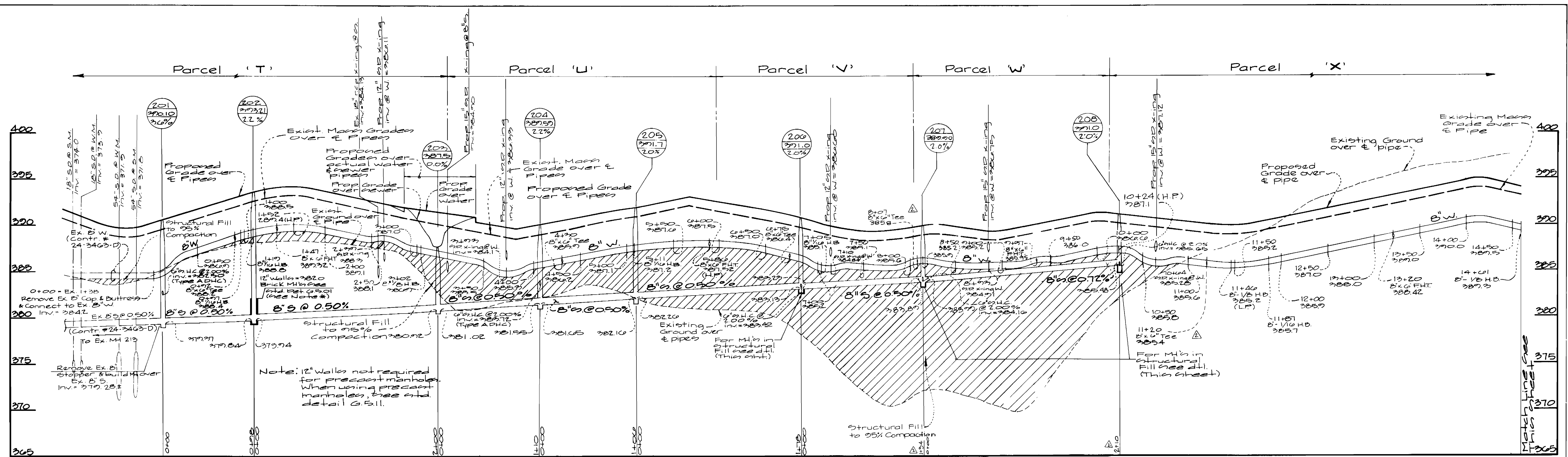
Note: Contractor shall sequence the construction of this contract to avoid any possible conflicts with sediment control measures installed under G.P. 90-45, F. 90-41 & SDP 97-142

Plan scale
1" = 50'

Water & Sewer As-Built

Department of Public Works Howard County, Maryland Robert M. Beigner Chief, Bureau of Utilities 6-13-97	Department of Planning & Zoning Howard County, Maryland [Signature] Chief, Development Engineering Division 6/17/97	GW GUTSCHICK LITTLE & WEBER, P.A. ENGINEERS, PLANNERS, SURVEYORS 1301 N.W. 40th St. HURTSVILLE, MD 21086	G.A.H. W.S.J. G.A.H. W.S.J. M.J.T. [Signature] DATE: April 1997	Water & Sewer Plan Scale: 1" = 50' BLOCK NO. 16	Route 175 Commercial Section 1, Area 1 Parcels 'T' thru 'X' Sixth Election District - Howard Co., Maryland Contract No.: 24-3541-D SCALE AS SHOWN SHEET 2 OF 3
---	---	--	---	---	---

As-Built



Department of Public Works
Howard County, Maryland

Robert H. Baumer
Chief, Bureau of Utilities

6-13-97
Date

Department of Planning & Zoning
Howard County, Maryland

John J. ...
Chief, Development Engineering Division

6/17/97
Date

GW GUTSCHICK LITTLE & WEBER, P.A.
ENGINEERS, PLANNERS, SURVEYORS

2005 NATIONAL DRIVE SUITE 200 HORTONSVILLE MD 21753
BURLINGTON, MD 20686
301.427.4024

ES: G.A.H.
WSJ

DRN: G.A.H.

SHA: M.J.T.

DATE: April 1997

REV: Location of MH 201, and rev B water profile.

ADD: 6\"/>

Water & Sewer Profiles
Scale: Horiz. 1"=50'
Vert. 1"=5'

Route 175 Commercial Section 1, Area 1
Parcels 'T' thru 'X'
Sixth Election District - Howard County, Maryland
Contract No: 24-3541-D

SCALE AS SHOWN

SHEET 3 OF 3