

General Notes

- Approximate location of existing mains are shown. The contractor shall take all necessary precautions to protect existing mains and services and maintain uninterrupted supply. Any damage incurred shall be repaired immediately to the satisfaction of the Engineer at the Contractor's expense.
- All horizontal controls are based on Maryland State Coordinates.
- All vertical controls are based on U.S.G.S. data.
- All pipe elevations shown are invert elevations.
- Clear all utilities by a minimum of 6". Clear all poles by 2'-0" minimum or tunnels as required. The owner has contacted the utility companies and has made arrangements for bracing of poles as shown on the drawings. In the event the contractor's work requires the bracing of additional poles, any cost incurred by the owner for bracing of additional poles or damages shall be deducted from money owed the contractor. The contractor shall coordinate with the utility companies to schedule the bracing of the poles.
- For details not shown on the drawings, and for materials and construction methods use Howard County Design Manual, Volume IV, Standard Specifications and Detail for Construction (Latest Edition). The contractor shall have a copy of Volume IV on the job.
- Where test pits have been made on existing utilities, they are noted by the symbol \square at the location of the test pit. A note or notes containing the results of the test pit or pits is included on the drawings. Existing utilities in the vicinity of the proposed work for which test pits have not been dug shall be located by the contractor two weeks in advance of construction operations at his own expense.
- Contractor shall notify the following utility companies or agencies at least five working days before starting work shown on these plans:

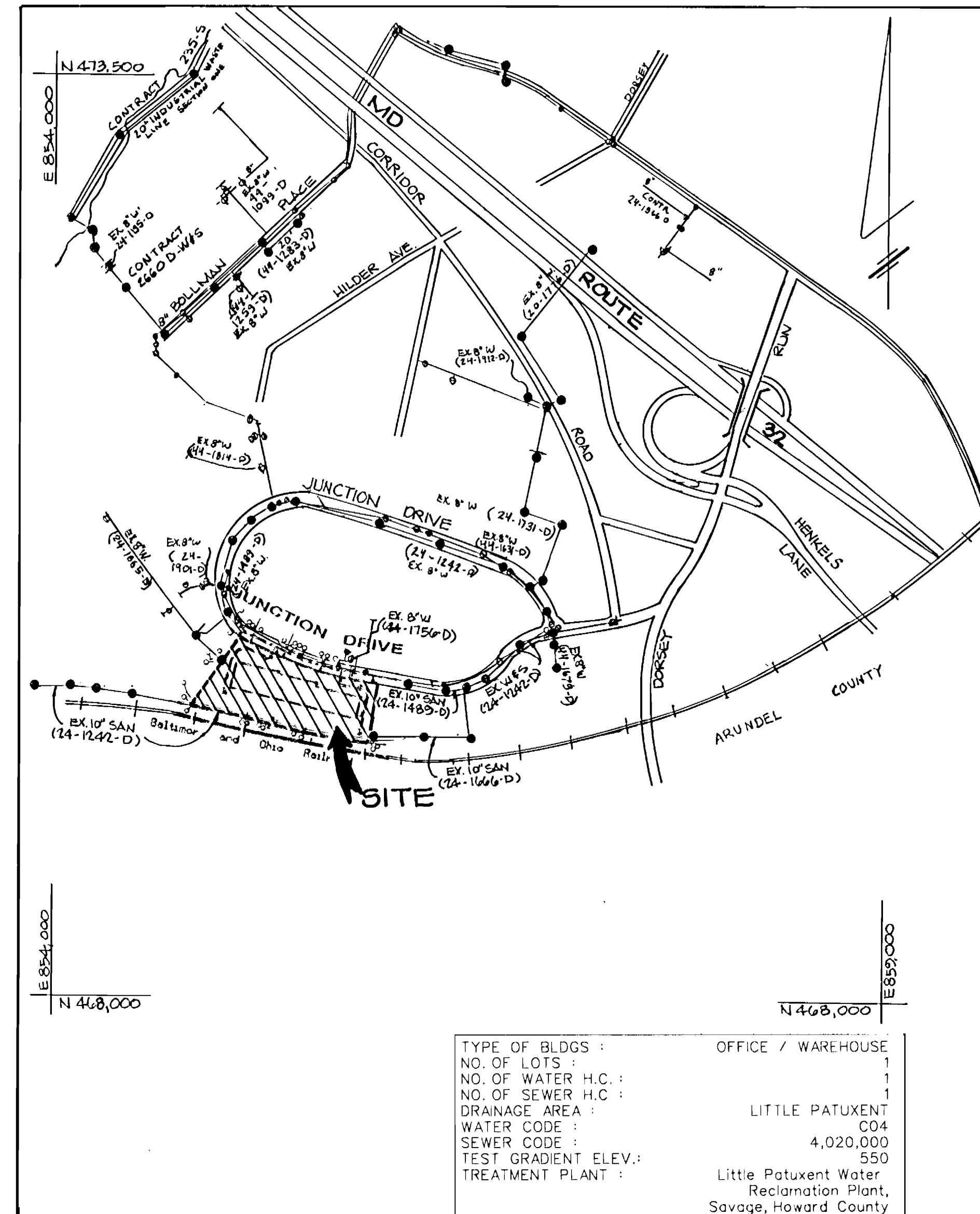
State Highway Administration	531-5533
Baltimore Gas & Electric Co. Contractor Services	850-4620
Baltimore Gas & Electric Co. Underground Damage Control	787-9068
Miss Utility	1-800-257-7777
Colonial Pipeline Co.	795-1390
Bureau of Utilities, Howard County Department of Public Works	313-4900
- Contractor shall remove trees, stumps and roots along line of excavation. Payment for such removal shall be included in the unit price bid for construction of the main.
- All fill areas within future roadway and under structures to be compacted to a minimum of 95% compaction as determined by AASHTO T-180.
- Valves adjacent to tees shall be strapped to tees.
- All water mains to be D.I.P. Class 52 unless otherwise noted.
- Tops of all water mains to have a minimum of 3-1/2' cover unless otherwise noted.
- All fittings shall be buttressed or anchored with concrete in accordance with the Standard Details unless otherwise provided for on the drawings.
- Fire hydrants shall be set to the bury line elevations shown on the drawings. All fire hydrants shall be restrained and buttressed with concrete in accordance with Standard Details. Soil around the fire hydrant shall be compacted in accordance with Section 1000 and 1005 of the Standard Specifications.
- The contractor shall notify the Bureau of Highways, Howard County, at (410) 313-2450 at least five working days before any open cut of any County road or boring/jacking operation in County roads for laying water/sewer mains or house connections. The approval of these drawings will constitute compliance with DPW requirements per Section 18.114(a) of the Howard County Code.
- The contractor shall not operate any water main valves on the existing water system.
- All water house connections shall be for inside meter setting unless otherwise noted on plans or in specifications.
- All sewer mains shall be D.I.P., UNLESS OTHERWISE NOTED.

Benchmarks :

Square Cut Top Conc. Curb \blacktriangleright End Elevation 210.71'

Control Reference :

Monument #1844001
R.B. 27'-0" Off N. Side Brook Ridge Rd.
1' Below Surface 170.974'
Monument #1843007
R.B. 14'-0" S. Of Centerline of
Brook Bridge Rd. 3' Below Surface
Elevation 174.606'



Location Map

SCALE: 1" = 600'

INDEX OF SHEETS	
SHEET NO.	TITLE
1	COVER SHEET, GENERAL NOTES & LOCATION MAP
2	PLAN VIEW
3	WATER MAIN PROFILES

WATER CONSTRUCTION PLANS JUNCTION INDUSTRIAL PARK PARCEL O-1

6th ELECTION DISTRICT HOWARD COUNTY, MARYLAND

CONTRACT NO. 44-3534-D

SEDIMENT CONTROL MEASURES FOR THIS CONTRACT WILL BE IMPLEMENTED IN ACCORDANCE WITH SECTION 219 OF THE STANDARD SPECIFICATIONS, SDP 96-96 AND F-90-123

THE DEVELOPMENT PLAN IS APPROVED FOR SOIL EROSION AND SEDIMENT CONTROL BY THE HOWARD SOIL CONSERVATION DISTRICT.

APPROVED: *John R. Robertson* 6-19-96
HOWARD SOIL CONSERVATION DISTRICT DATE

REVIEWED FOR HOWARD SOIL CONSERVATION DISTRICT AND MEETS TECHNICAL REQUIREMENTS.

J. H. Wainfield / JPK 6-19-96
S.S. SOIL CONSERVATION SERVICE DATE

DEPARTMENT OF PUBLIC WORKS
HOWARD COUNTY, MARYLAND

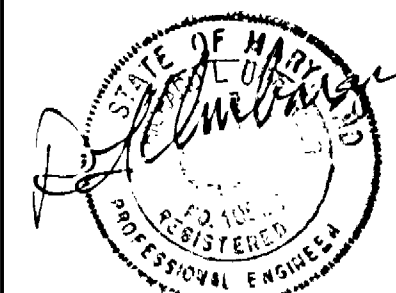
DEPARTMENT OF PLANNING & ZONING
HOWARD COUNTY, MARYLAND



GEORGE W. STEPHENS, JR.
AND ASSOCIATES, INC.

Civil Engineers and Land Surveyors

658 Kenilworth Drive, Suite 100
Towson Maryland 21204
(410) 825-8120



DESIGNED : RAM
DRAFTED : EMT
CHECKED : PRC

**COVER SHEET,
GENERAL NOTES & LOCATION MAP
FOR
PUBLIC WATER MAIN**

600 SCALE MAP NO. 48

BLOCK NO. 19

**PUBLIC WATER MAIN
JUNCTION INDUSTRIAL PARK
PARCEL O-1**

HOWARD COUNTY, MARYLAND
ELECTION DISTRICT #6

SECTION 2, AREA 1

MARCH 13, 1995
SHEET 1 OF 3

CONTRACT NO. 44-3534-D

QUANTITIES

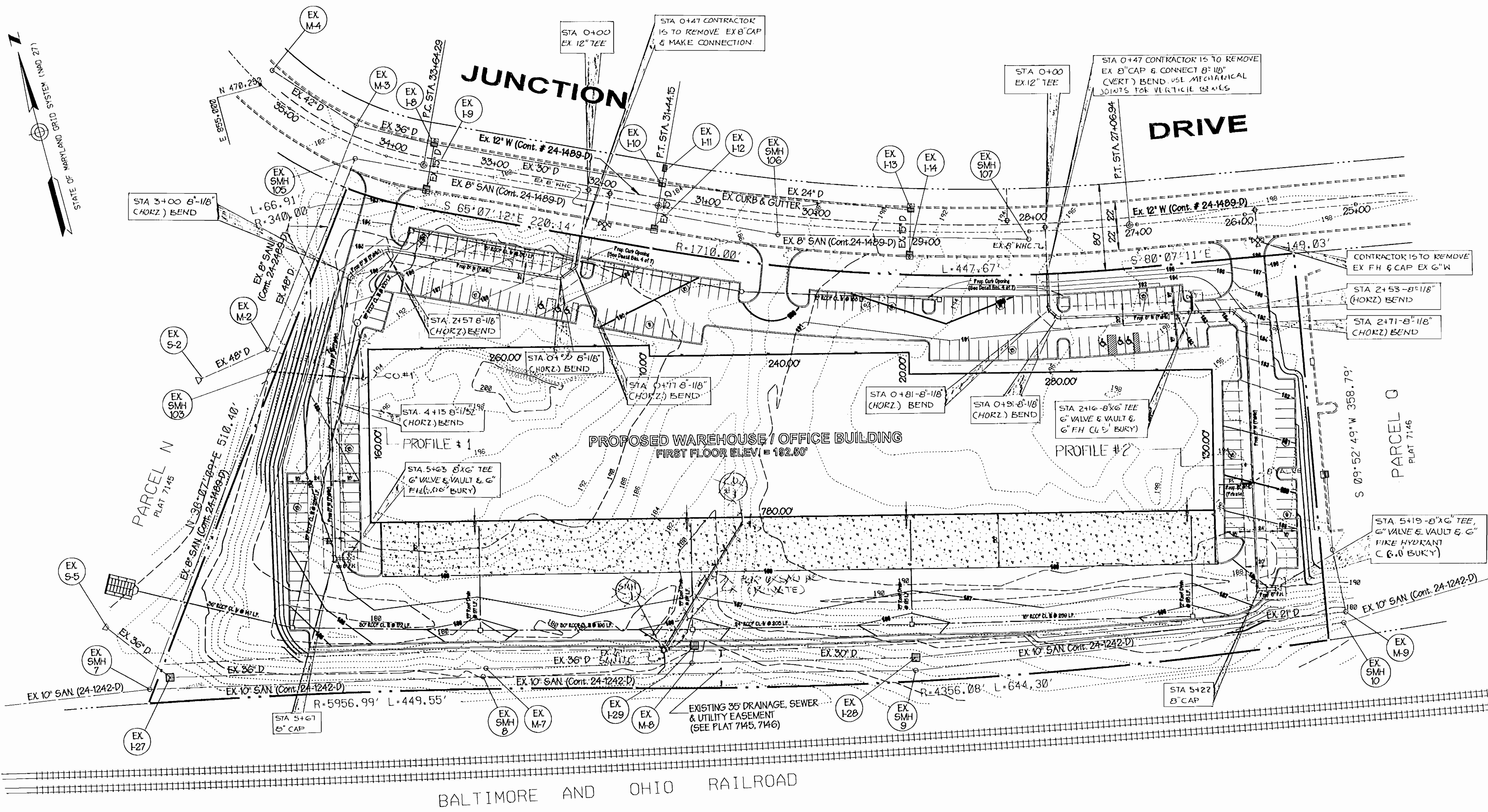
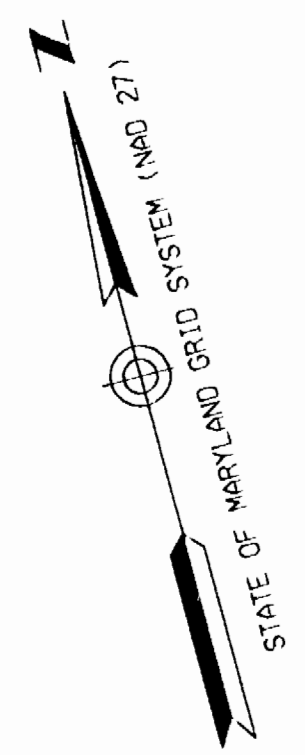
ITEMS	QUANTITIES ESTIMATED	AS-BUILT		
		QUANTITIES	TYPE	MANUFACTURER/ SUPPLIER
8" DP WATER	995 L.F.	1003 L.F.	CLASS 52	GRIFFIN PIPE
8" DP WATER	42 L.F.	31 L.F.	CLASS 52	GRIFFIN PIPE
8" X 6" TEE	4	3	M.J. TEE	GRIFFIN PIPE/M&C SALES
6" VALVE	4	3	GATE VALVE	KENNEDY/M&C SALES
FIRE HYDRANT	3	3	C502/A12600	"
8" X 6" TEE		1	M.J. TEE	GRIFFIN PIPE/M&C SALES
6" VALVE		1	M.J. GATE VALVE	KENNEDY/M&C SALES

NAME OF UTILITY CONTRACTOR : FALLSTON UTILITIES

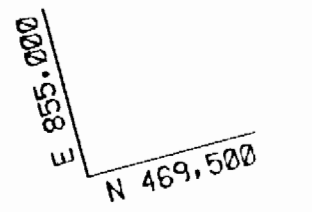
SURVEY AND DRAFTING DIVISION AS-BUILT DATE FEB. 23, 1997

BY	NO.	REVISION	DATE

3534



WATER LINE #1		TO:	DIST:
FROM:	FRAT STA 5123	6" FHV	11'
	6" FHV AT STA 5123	EX. SMH #103	163'
WATER LINE #2			
FROM:	FRAT STA 5115	6" FHV	7'
	6" FHV AT STA 5115	STATION DR. INLET	69'
	FR AT STA. 5116	8" V. FOR BLDG	92'
	FR AT STA. 2116	8" V. FOR BLDG	165'
	6" FHV AT STA 2116	8" V. FOR BLDG	177'
	FR AT STA. 2116	6" FHV AT STA. 2116	13'



PLAN
Scale: 1" = 50'

SEDIMENT CONTROL MEASURES FOR THIS CONTRACT WILL BE IMPLEMENTED IN ACCORDANCE WITH SECTION 219 OF THE STANDARD SPECIFICATIONS, SOP 96-96 AND F-90-123

THE DEVELOPMENT PLAN IS APPROVED FOR SOIL EROSION AND SEDIMENT CONTROL BY THE HOWARD SOIL CONSERVATION DISTRICT.

APPROVED
John R. Robertson 6-19-96
HOWARD SOIL CONSERVATION DISTRICT DATE

REVIEWED FOR HOWARD SOIL CONSERVATION DISTRICT AND MEETS TECHNICAL REQUIREMENTS.

J. L. Warfield 6-19-96
U.S. SOIL CONSERVATION SERVICE DATE

DEPARTMENT OF PUBLIC WORKS
HOWARD COUNTY, MARYLAND
Robert D. Brainerd 6-17-96
CHIEF, BUREAU OF UTILITIES DATE

DEPARTMENT OF PLANNING & ZONING
HOWARD COUNTY, MARYLAND
John J. ... 6/20/96
CHIEF, DEVELOPMENT ENGINEERING DIVISION DATE

GWS
GEORGE W. STEPHENS, JR.
AND ASSOCIATES, INC.
Civil Engineers and Land Surveyors
658 Kenilworth Drive, Suite 100
Towson Maryland 21204
(410) 825-8120



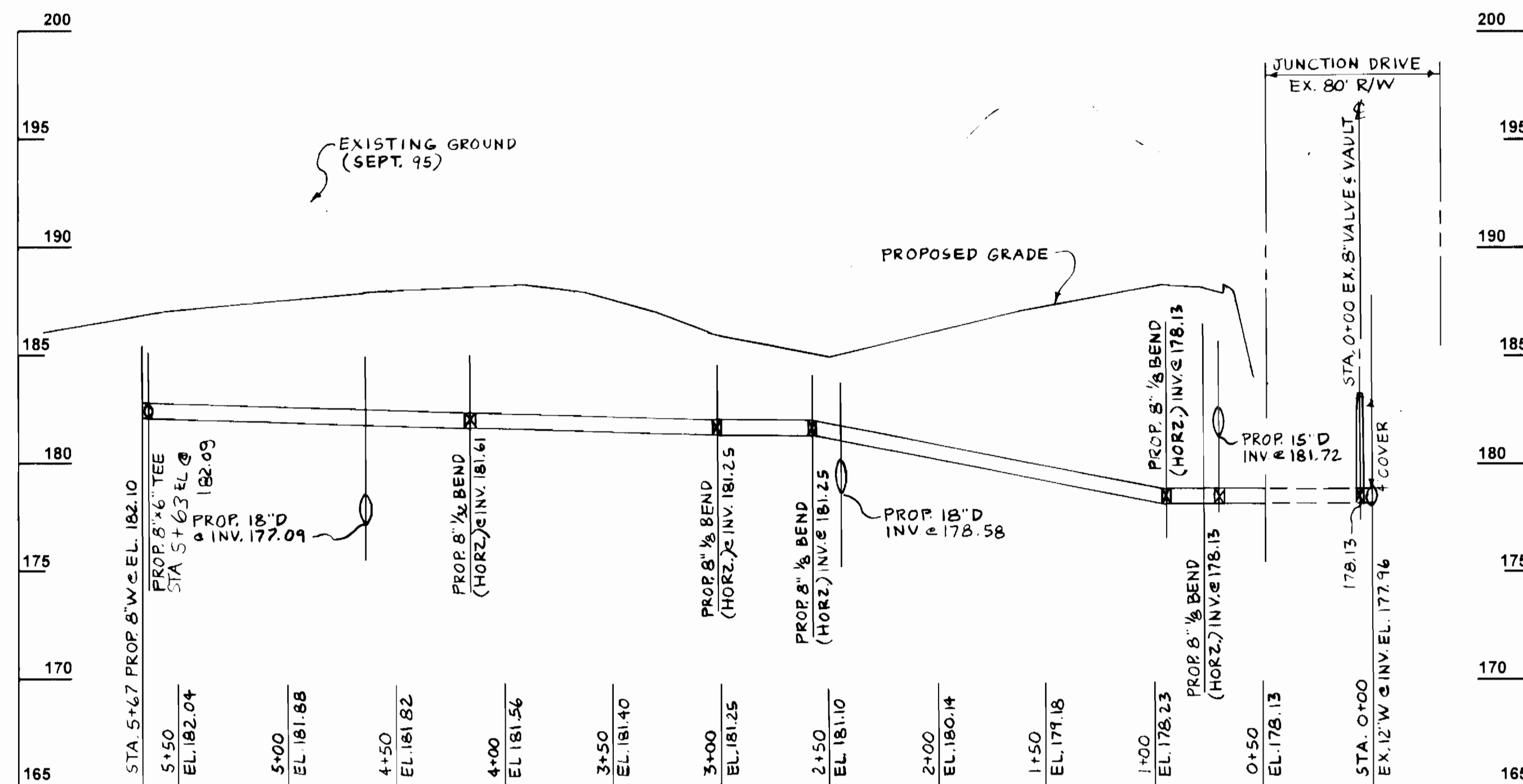
DESIGNED • RAM
DRAFTED • EMT
CHECKED • PRC

PLAN VIEW
CONTRACT NO. 44-3534-D
600 SCALE MAP NO. 48 BLOCK NO. 19

BY	NO.	REVISION	DATE

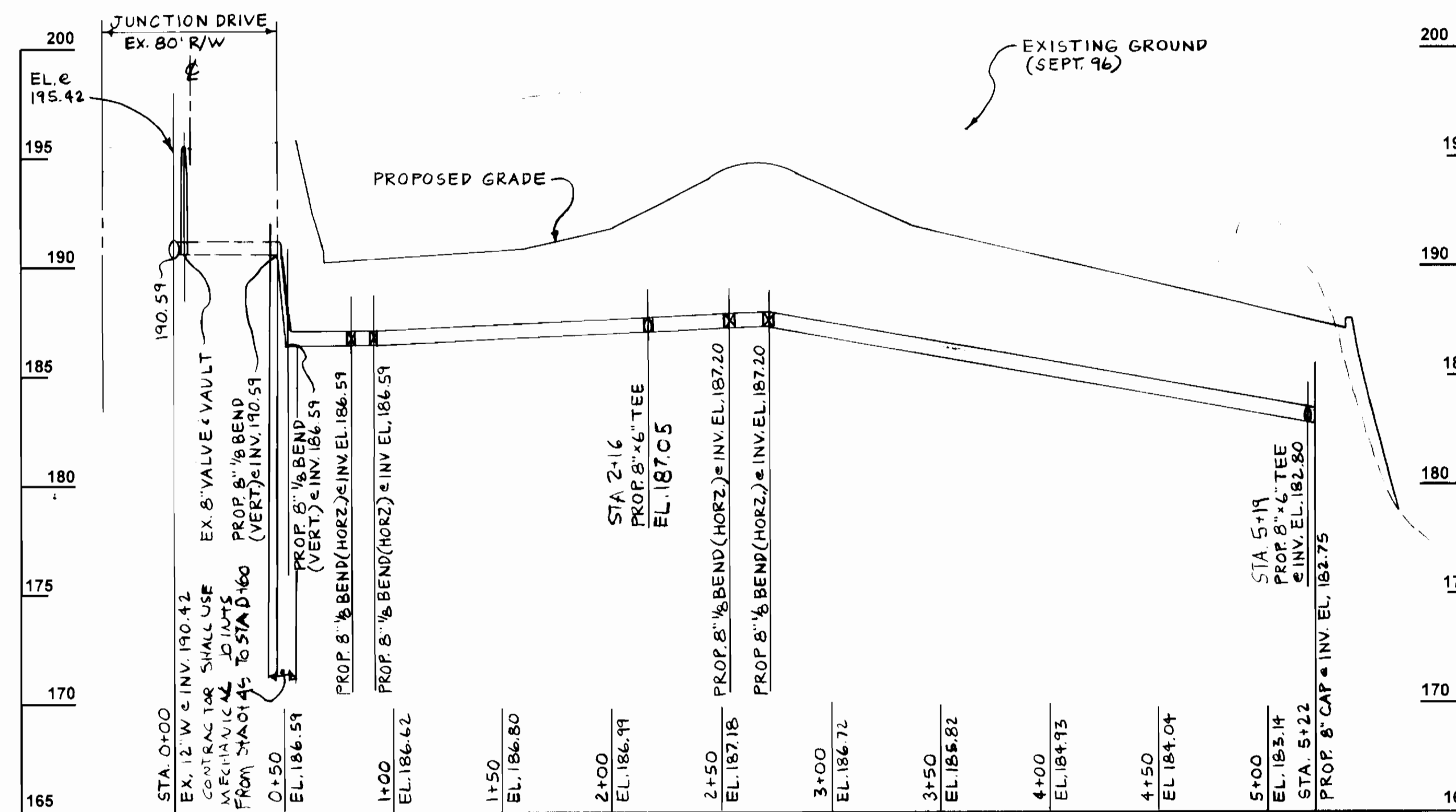
PUBLIC WATER MAIN
JUNCTION INDUSTRIAL PARK
PARCEL O-1
CONTRACT NO. 44-3534-D
SECTION 2, AREA 1
HOWARD COUNTY, MARYLAND ELECTION DISTRICT #6
MARCH 28, 1995
SHEET 2 OF 3

3534



Public Water Main Profile 1

Scale: Horiz 1" = 50'
Vert 1" = 5'



Public Water Main Profile 2

Scale: Horiz 1" = 50'
Vert 1" = 5'

SEDIMENT CONTROL MEASURES FOR THIS CONTRACT WILL BE IMPLEMENTED IN ACCORDANCE WITH SECTION 219 OF THE STANDARD SPECIFICATIONS, SDP 96-96 AND F-90-12.3

THE DEVELOPMENT PLAN IS APPROVED FOR SOIL EROSION AND SEDIMENT CONTROL BY THE HOWARD SOIL CONSERVATION DISTRICT.

APPROVED: *John K. Robertson* 6-19-96
HOWARD SOIL CONSERVATION DISTRICT DATE

REVIEWED FOR HOWARD SOIL CONSERVATION DISTRICT AND MEETS TECHNICAL REQUIREMENTS.

J. H. Wayfield 6-19-96
S.S. SOIL CONSERVATION SERVICE DATE

DEPARTMENT OF PUBLIC WORKS
HOWARD COUNTY, MARYLAND

DEPARTMENT OF PLANNING & ZONING
HOWARD COUNTY, MARYLAND



**GEORGE W. STEPHENS, JR.
AND ASSOCIATES, INC.**

Civil Engineers and Land Surveyors

658 Kentworth Drive, Suite 100
Fossom, Maryland 21204
(410) 825-8120



DESIGNED: RAM
DRAFTED: EMT
CHECKED: PRC

WATER MAIN PROFILES

CONTRACT NO. 44-3534-D

600 SCALE MAP NO. 48

BLOCK NO. 19

BY	NO.	REVISION	DATE

**PUBLIC WATER MAIN
JUNCTION INDUSTRIAL PARK**

PARCEL O-1
CONTRACT NO. 44-3534-D
SECTION 2, AREA 1
HOWARD COUNTY, MARYLAND
ELECTION DISTRICT #6

MARCH 13, 1995
SHEET 3 OF 3

3534