

**GENERAL NOTES**

**PART I - GENERAL**

- Approximate location of existing mains are shown. The contractor shall take all necessary precautions to protect existing mains and services and maintain uninterrupted supply. Any damage incurred shall be repaired immediately to the satisfaction of the Engineer at the Contractor's expense.
- All horizontal controls are based on Maryland State Coordinates. [North American Datum of 1983 (NAD '83)].
- All vertical controls are based on U.S.G.S. data.
- All pipe elevations shown are invert elevations.
- Clear all utilities by a minimum of 6". Clear all poles by 2'-0" minimum or tunnel as required. The owner has contacted the utility companies and has made arrangements for bracing of poles as shown on the drawings. In the event that the contractor's work requires the bracing of additional poles, any cost incurred by the owner for bracing of additional poles or damages shall be deducted from money owed the contractor. The contractor shall coordinate with the utility companies to schedule the bracing of the poles.
- For details not shown on the drawings, and for materials and construction methods, use Howard County Design Manual, Volume IV, Standard Specifications and Details for Construction (Latest Edition). The contractor shall have a copy of Volume IV on the job.
- Where test pits have been made on existing utilities, they are noted by the symbol at the location of the test pit. A note or notes containing the results of the test pit or pits is included on the drawings. Existing utilities in the vicinity of the proposed work for which test pits have not been dug shall be located by the contractor two weeks in advance of construction operations at his own expense.
- Contractor shall notify the following utility companies or agencies at least five working days before starting work shown on these plans:
 

State Highway Administration	531-5533
BC&E Co. Contractor Services	850-4620
BC&E Co. Under Ground Damage Control	787-9068
Miss Utility	1-800-257-7777
Colonial Pipeline Co.	795-1390
Howard County Department of Public Works Bureau of Utilities	313-4900
- Trees and shrubs are to be protected from damage to maximum extent. Trees and shrubs located within the construction strip are not to be removed or damaged by the contractor.
- Contractor shall remove trees, stumps and roots along line of excavation. Payment for such removal shall be included in the unit price bid for construction of the main.
- The contractor shall notify the Bureau of Highways, Howard County, at (410) 313-2450 at least five working days before any open cut of any County road or boring/jacking operation in County roads for laying water/sewer mains or house connections. The approval of these drawings will constitute compliance with DPW requirements per Section 18.114(a) of the Howard County Code.

**PART II - WATER**

- All water mains to be D.I.P. Class 52 unless otherwise noted.
- Tops of all water mains to have a minimum of 3'-1/2' cover unless otherwise noted.
- Valves adjacent to tees shall be strapped to tees.
- All fittings shall be buttressed or anchored with concrete in accordance with the Standard Details unless otherwise provided for on the drawings.
- Fire hydrants shall be set to the bury line elevations shown on the drawings. All fire hydrants shall be restrained and buttressed with concrete in accordance with Standard Details. Soil around the fire hydrant shall be compacted in accordance with Sections 1000 and 1005 of the Standard Specifications.
- The contractor shall not operate any water main valves on the existing water system.
- All water house connections shall be for inside meter setting unless otherwise noted on plans or in specifications.
- For sprinkler system for all townhomes or multi-family dwelling units shall have a minimum of 1" connection with a 3/4" meter.

**PART III - SEWER**

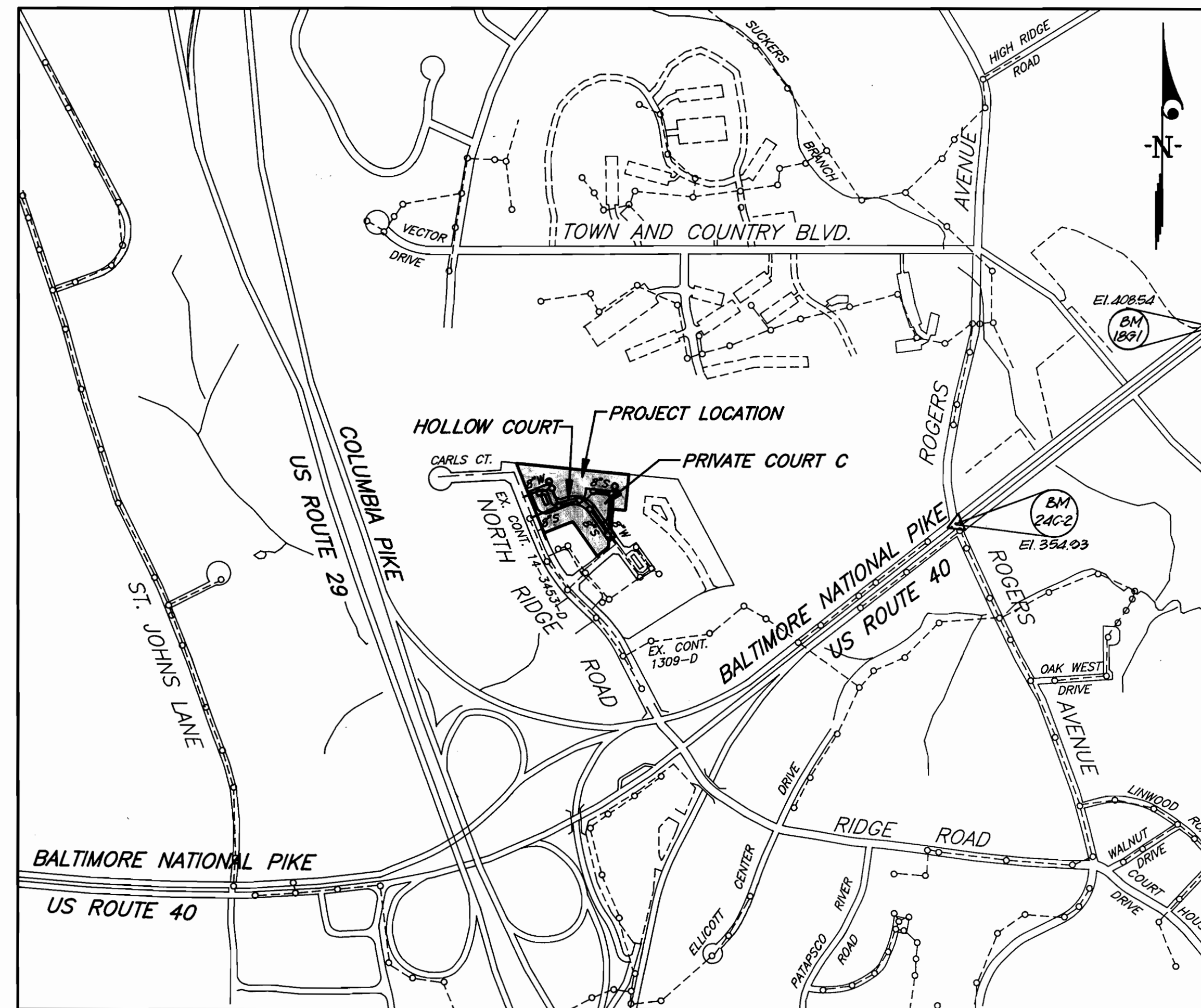
- All sewer mains shall be DIP or P.V.C. unless otherwise noted.
- All manholes shall be 4'-0" inside diameter unless otherwise noted.
- Force mains shall be D.I.P. only.
- Manholes shown with 12" and 16" walls are for brick manholes only.
- Manholes designated W.T. in plan and profile shall have watertight frame and covers, Standard Detail G5.52. Where watertight manhole frame and cover is used, set top of frame 1" - 6" above finished grade unless otherwise noted on the drawings.
- House(s) with the symbol "C.N.S." indicates that cellar cannot be served.

QUANTITIES				
ITEMS	QUANTITIES ESTIMATED	AS-BUILT		
		QUANTITIES	TYPE	MANUFACTURER/SUPPLIER
8" W	1053 L.F.	1157.7 L.F.	D.I.P. CL. 52	ATLANTIC STATES / U.S. FILTER
1" WHC	710 L.F.	817.0 L.F.	TYPE "K" COPPER	READING TUBE / U.S. FILTER
2" WHC	24 L.F.	22.0 L.F.	TYPE "K" COPPER	READING TUBE / U.S. FILTER
8" VALVES	2 EA.	4.0 EA.	RES. WEDGE GATE	MUELLER CO. / U.S. FILTER
FIRE HYDRANT	2 EA.	2.0 EA.	CENTURION	MUELLER CO. / U.S. FILTER
8" S	1134 L.F.	1090.0 L.F.	PVC	U.M. MANUFACTURING / U.S. FILTER
4" SHC	1010 L.F.	1337.0 L.F.	PVC	U.M. MANUFACTURING / U.S. FILTER
4'-0" MANHOLE	10 EA.	10.0 EA.	PRE-CAST CONC.	FREDERICK PRE-CAST CONC. INC. / FREDERICK PRE-CAST
1 1/2" WHC	583 L.F.	756.0 EA.	TYPE "K" COPPER	READING TUBE / U.S. FILTER

NAME OF UTILITY CONTRACTOR: J.F.C. CONSTRUCTION CO.  
SURVEY AND DRAFTING DIVISION AS-BUILT DATE: 08-04-98

FROM:	TO:	DIST.	FROM:	TO:	DIST.	FROM:	TO:	DIST.
EXIST. MH 11	LOT A-62	35.0'	MH 10	LOT A-98	26.2'	MH 2	LOT A-79	84.7'
EXIST. MH 11	LOT A-63	34.4'	MH 10	LOT A-99	43.5'	MH 2	LOT A-80	106.9'
EXIST. MH 11	LOT A-64	47.0'	MH 10	LOT A-100	63.0'	F.H. (13+44)	LOT A-88	83.3'
EXIST. MH 11	LOT A-65	61.8'	MH 10	LOT A-101	76.5'	F.H.	LOT A-89	62.4'
EXIST. MH 11	LOT A-66	79.5'	MH 10	LOT A-102	96.5'	F.H.	LOT A-90	49.3'
EXIST. MH 11	LOT A-67	91.5'	MH 8	LOT A-98	94.0'	MH 4	LOT A-90	42.0'
EXIST. MH 11	LOT A-6	65.3'	MH 8	LOT A-99	74.8'	MH 4	LOT A-89	26.0'
EXIST. MH 11	LOT A-7	80.0'	MH 8	LOT A-100	55.3'	MH 4	LOT A-88	19.2'
EXIST. MH 11	LOT A-8	101.9'	MH 8	LOT A-101	41.0'	MH 4	LOT A-87	24.0'
8" VALVE (C&A)	LOT A-62	94.0'	MH 8	LOT A-102	23.8'	MH 4	LOT A-86	43.0'
8" VALVE	LOT A-63	81.6'	MH 8	LOT A-103	69.5'	MH 4	LOT A-85	24.5'
8" VALVE	LOT A-64	69.3'	MH 8	LOT A-104	91.3'	MH 5	LOT A-86	14.5'
8" VALVE	LOT A-65	94.0'	MH 8	LOT A-105	31.5'	MH 5	LOT A-85	23.5'
8" VALVE	LOT A-66	47.0'	MH 8	LOT A-106	13.2'	MH 5	LOT A-84	49.5'
8" VALVE	LOT A-67	48.0'	MH 8	LOT A-107	23.7'	MH 5	LOT A-83	68.0'
8" VALVE	LOT A-6	94.7'	MH 8	LOT A-108	41.5'	MH 5	LOT A-82	89.9'
8" VALVE	LOT A-7	82.8'	MH 8	LOT A-109	60.2'	MH 5	LOT A-81	111.5'
8" VALVE	LOT A-8	99.0'	MH 8	LOT A-110	75.8'	MH 6	LOT A-81	44.4'
8" VALVE	LOT A-9	68.0'	MH 10	LOT A-103	160.2'	MH 6	LOT A-82	32.0'
8" VALVE	LOT A-10	86.7'	MH 10	LOT A-104	143.2'	MH 6	LOT A-83	39.7'
F.H. (7+29)	LOT A-9	80.0'	MH 10	LOT A-105	136.6'	MH 6	LOT A-84	46.0'
F.H.	LOT A-10	80.0'	8" VALVE (C&A)	LOT A-106	37.8'	MH 6	LOT A-85	69.0'
F.H.	LOT A-68	57.0'	8" VALVE	LOT A-107	26.2'			
F.H.	LOT A-69	55.8'	8" VALVE	LOT A-108	23.7'			
F.H.	LOT A-70	63.0'	8" VALVE	LOT A-109	40.0'			
F.H.	LOT A-71	71.8'	8" VALVE	LOT A-110	53.0'			
F.H.	LOT A-72	88.0'	F.H. (13+44)	LOT A-73	81.0'			
MH 12	LOT A-68	75.0'	F.H.	LOT A-74	66.0'			
MH 12	LOT A-69	92.3'	F.H.	LOT A-75	60.3'			
MH 12	LOT A-70	38.5'	F.H.	LOT A-76	63.5'			
MH 12	LOT A-71	33.0'	F.H.	LOT A-77	69.5'			
MH 12	LOT A-72	39.0'	F.H.	LOT A-78	82.0'			
8" VALVE (C&A)	LOT A-91	99.0'	F.H.	LOT A-79	96.0'			
8" VALVE	LOT A-92	84.5'	F.H.	LOT A-80	114.0'			
8" VALVE	LOT A-93	64.7'	MH 1	LOT A-80	19.8'			
8" VALVE	LOT A-94	49.5'	MH 2	LOT A-73	49.0'			
8" VALVE	LOT A-95	28.0'	MH 2	LOT A-74	28.0'			
8" VALVE	LOT A-96	80.8'	MH 2	LOT A-75	19.6'			
8" VALVE	LOT A-97	90.2'	MH 2	LOT A-76	31.5'			
MH 10	LOT A-96	16.5'	MH 2	LOT A-77	47.2'			
MH 10	LOT A-97	11.0'	MH 2	LOT A-78	66.0'			
MH 3	LOT A-95	25.5'						
MH 3	LOT A-94	25.5'						
MH 3	LOT A-93	35.5'						
MH 3	LOT A-92	53.6'						
MH 3	LOT A-91	67.0'						

SEWER AS-BUILT  
[TABULATED]



VICINITY MAP  
SCALE: 1" = 600'

WATER & SEWER CODE:  
COUNTY USE:  
WATER NO.: F03  
SEWER NO.: 1452800  
TEST GRADIENT: 700

TYPE OF BUILDING	TOWNHOUSES
NO. OF LOTS/PARCELS	51
NO. OF WATER HOUSE CONNECTIONS	54
NO. OF SEWER HOUSE CONNECTIONS	54
DRAINAGE AREA	PATAPSCO
TREATMENT PLANT	PATAPSCO W.Q.M.C.

CONTRACT NO. 14-3530-D  
HOWARDS RIDGE  
SECTION 1 AREA 2  
LOTS A-62 THRU A-112  
HOWARD COUNTY, MARYLAND  
DEPARTMENT OF PUBLIC WORKS

SEDIMENT CONTROL MEASURES WILL BE IMPLEMENTED IN ACCORDANCE WITH SECTION 219 OF THE SPECIFICATIONS AND WITH ROAD CONSTRUCTION PLAN F-96-147; DRAWING 7 AND 8, SEDIMENT AND EROSION CONTROL.

REVIEWED FOR HOWARD SOIL CONSERVATION DISTRICT AND MEETS TECHNICAL REQUIREMENTS.

*J.D. Wainfield* 2/25/96  
SIGNATURE DATE

U. S. SOIL CONSERVATION SERVICE

THIS DEVELOPMENT PLAN IS APPROVED FOR SOIL EROSION AND SEDIMENT CONTROL BY THE HOWARD SOIL CONSERVATION DISTRICT.

APPROVED:  
*John R. Roberts* 2/25/96  
HOWARD S. C. D. DATE

DEPARTMENT OF PUBLIC WORKS  
HOWARD COUNTY, MARYLAND

DEPARTMENT OF PLANNING & ZONING  
HOWARD COUNTY, MARYLAND

CLARK · FINEFROCK & SACKETT, INC.  
ENGINEERS · PLANNERS · SURVEYORS

7135 MINSTREL WAY COLUMBIA, MD 21045  
(410) 381-7500 BALT. (301) 621-8100 WASH.



DES: DAB

DRN: KIWM/ZAH

CHK: JTB

DATE: APRIL 96

CF#S 2 Revised Street Name

CF#S 1 Added W/SWC's to Future Lots 6 thru 10

BY NO. REVISION

5-27-98

3-20-98

DATE

TITLE SHEET

600' SCALE MAP NO. 24 BLOCK NO. 6

HOWARDS RIDGE  
SECTION 1 AREA 2  
LOTS A-62 THRU A-112  
2ND ELECTION DISTRICT  
HOWARD COUNTY, MARYLAND  
CONTRACT No. 14-3530-D

SCALE:

AS SHOWN

SHEET

1 OF 3

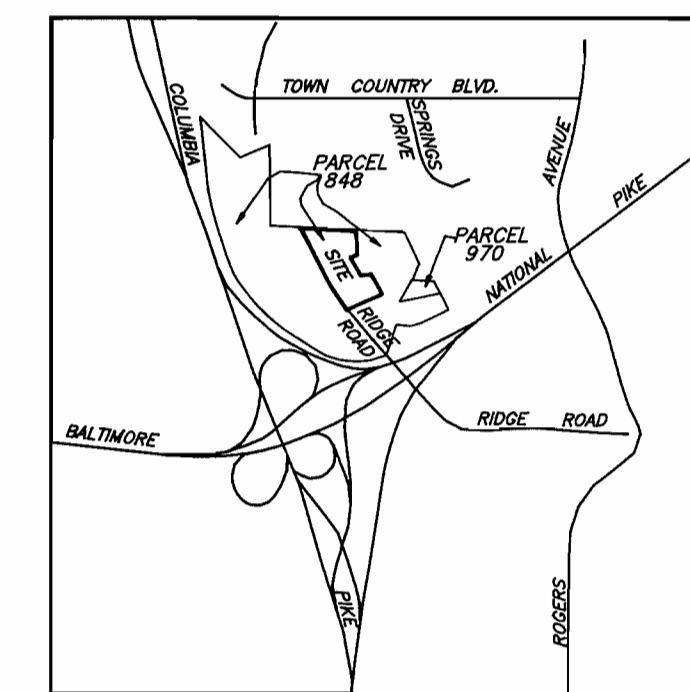


STAKEOUT TABLE			
STREET	Q STA.	OFFSET	REMARKS
HIBISCUS COURT	9+80.00	7.24' LT	EX. MH NO. 11
	0+00.00	7' RT	8" X 8" TEE
	7+20	7' RT	8" X 8" FIT
	7+20	15.67' RT	FIKE HYDRANT
	7+81.73	6.83' LT	MH NO. 12
	8+34.62	7.89' RT	8" X 8" TEE
	8+84.01	17.50' RT	8" 1/8" HB
	9+86.40	4' RT	MH NO. 3
	9+86.40	7.2' LT	MH NO. 2
	10+18.89	7' RT	8" 1/8" HB
	10+81.89	32.51' LT	MH NO. 1
	12+13.80	4' RT	MH NO. 6
	12+42.40	7' LT	8" 1/8" HB
	12+73.80	27' LT	MH NO. 4
	12+83.40	7' LT	8" 1/8" HB
	13+49.00	7' RT	8" X 8" FIT
	13+49.00	17.67' LT	FIKE HYDRANT
	13+59.53	7' RT	8" W AT SD CROSSING
	13+65.40	7' RT	8" 1/8" HB
Private Court C	0+36+71	24.21' RT	8" 1/8" HB
	1+59.17	14' NORTH	8" 1/8" HB
	1+59.17	14' EAST	8" 1/8" HB
	2+47.64	25.60' RT	MH NO. 10
	2+48.73	14.73' RT	8" 1/8" HB

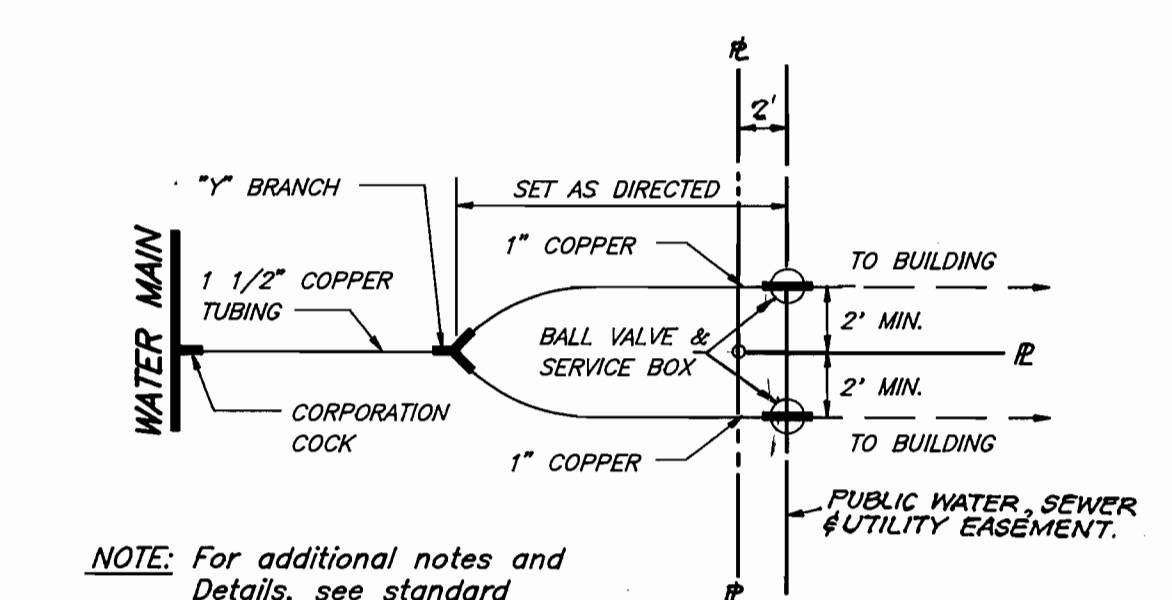
SEWER HOUSE CONNECTION TABLE							
LOT NO.	INV.	PL.	MIN. CELL.	LOT NO.	INV.	PL.	MIN. CELL.
A-62	424.44		429.64	A-87	424.60		427.60
A-63	426.50		428.71	A-88	422.60		425.70
A-64	426.82		430.02	A-89	422.10		425.20
A-65	427.13		430.33	A-90	422.00		425.10
A-66	427.45		430.65	A-91	425.60		429.00
A-67	427.81		430.91	A-92	426.50		429.80
A-68	428.33		431.43	A-93	427.40		430.80
A-69	428.65		431.85	A-94	428.50		431.80
A-70	428.96		432.16	A-95	428.60		432.00
A-71	429.27		432.47	A-96	430.24		433.44
A-72	429.58		432.78	A-97	430.14		433.34
A-73	429.89		433.09	A-98	429.80		433.00
A-74	422.50		425.70	A-99	429.80		432.80
A-75	422.10		425.20	A-100	429.40		432.60
A-76	421.50		424.80	A-101	429.18		432.38
A-77	421.40		424.50	A-102	429.00		432.20
A-78	421.30		424.40	A-103	429.46		432.46
A-79	421.20		424.30	A-104	429.36		432.36
A-80	421.10		424.20	A-105	429.17		432.27
A-81	424.00		427.20	A-106	428.88		432.18
A-82	423.80		427.00	A-107	428.59		431.79
A-83	423.30		426.50	A-108	428.36		431.56
A-84	423.10		426.30	A-109	428.14		431.34
A-85	422.80		426.00	A-110	427.97		431.17
A-86	427.30		430.40				
FUT 6	426.6		429.8				
FUT 7	426.5		430.1				
FUT 8	427.1		430.3				
FUT 9	427.3		430.5				
FUT 10	427.6		430.8				

8" WATER MAIN CRIMP STAKEOUT TABLE			
STREET	Q STA.	OFFSET	REMARKS
HIBISCUS COURT	9+80.89	7' RT	P.C. CURVE A
	8+89.70	8.53' RT	P.T. CURVE A
	8+31.31	7.12' RT	P.C. CURVE B
	7+46.40	7' RT	P.T. CURVE B
PRIVATE COURT C	3+05.79	7.75' RT	P.C. CURVE C
	2+49.49	14' RT	P.T. CURVE C

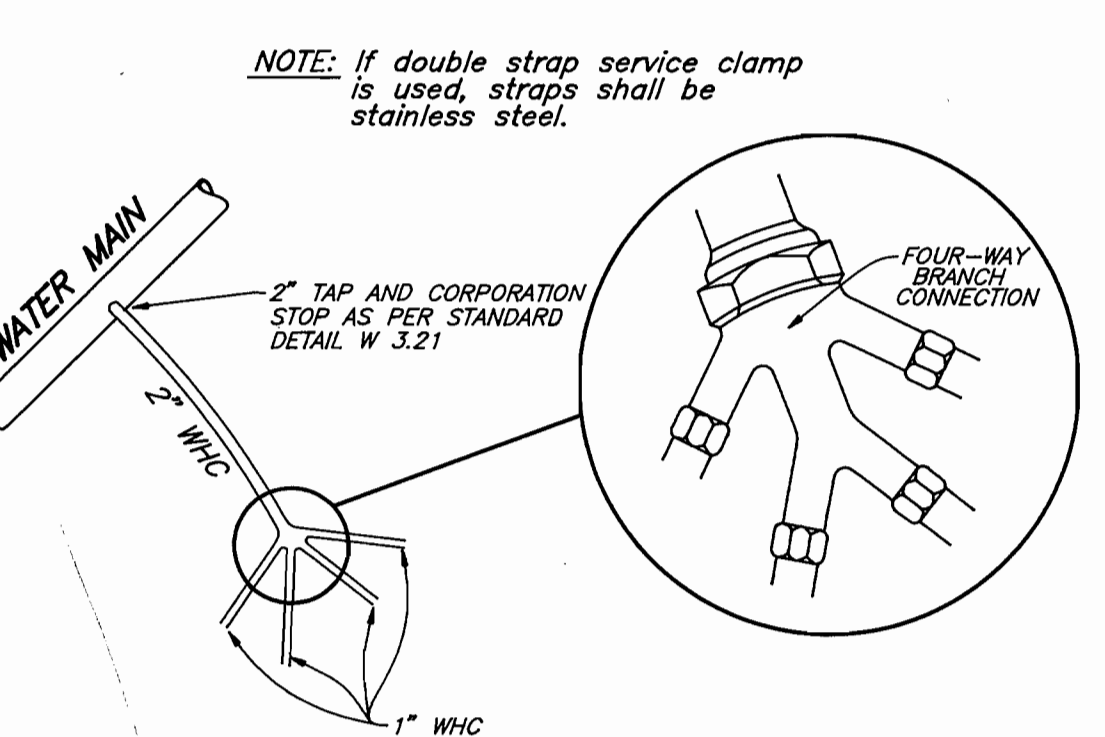
8" WATER MAIN CRIMP CURVE DATA					
CURVE	RADIUS	LENGTH	TANGENT	CHORD	DELTA
A	290.00'	74.13'	37.27'	73.93'	14:38:48"
B	290.00'	87.35'	44.01'	87.02'	17:15:29"
C	290.00'	64.52'	32.39'	64.39'	12:44:48"



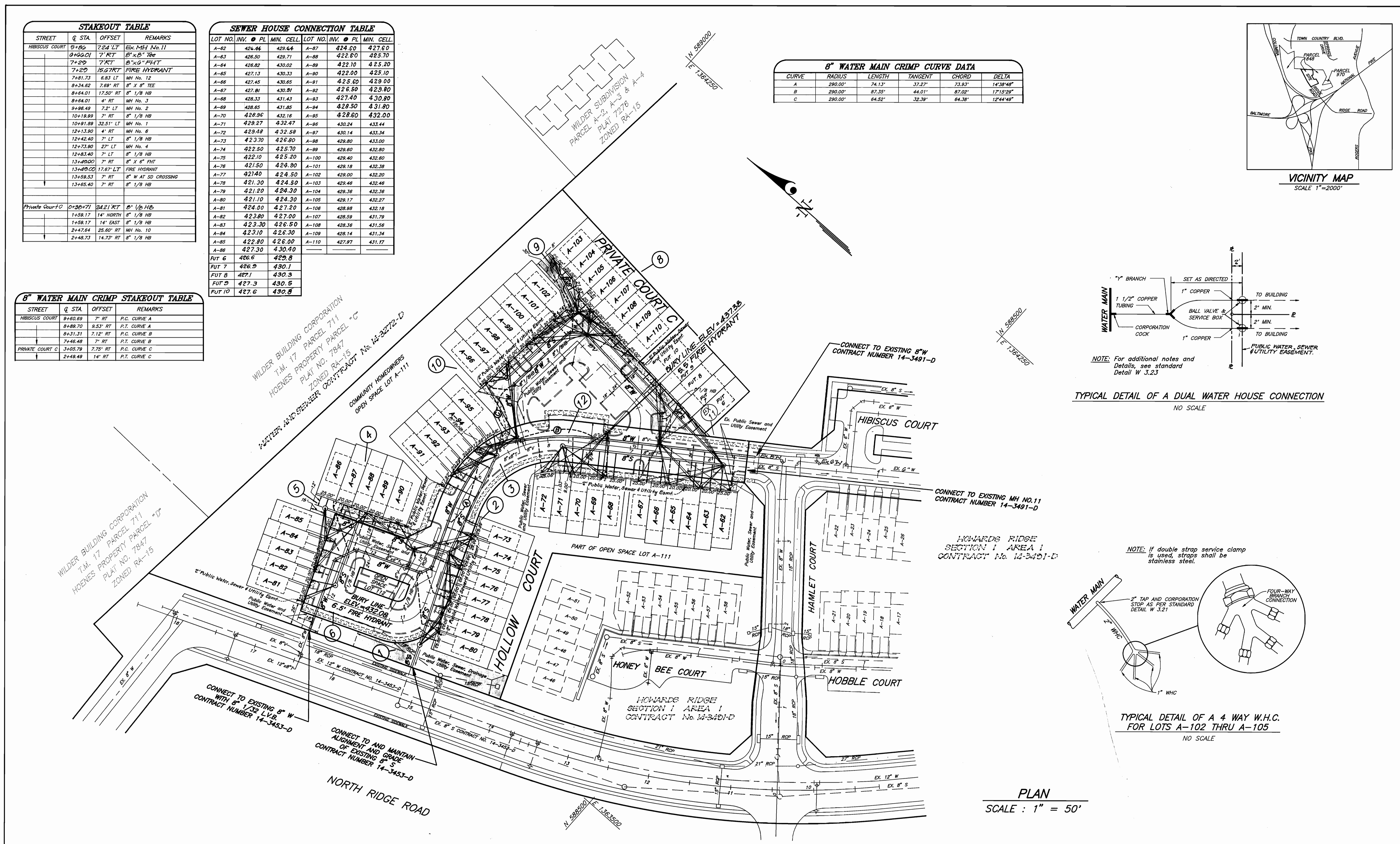
VICINITY MAP  
SCALE 1"=2000'



TYPICAL DETAIL OF A DUAL WATER HOUSE CONNECTION  
NO SCALE



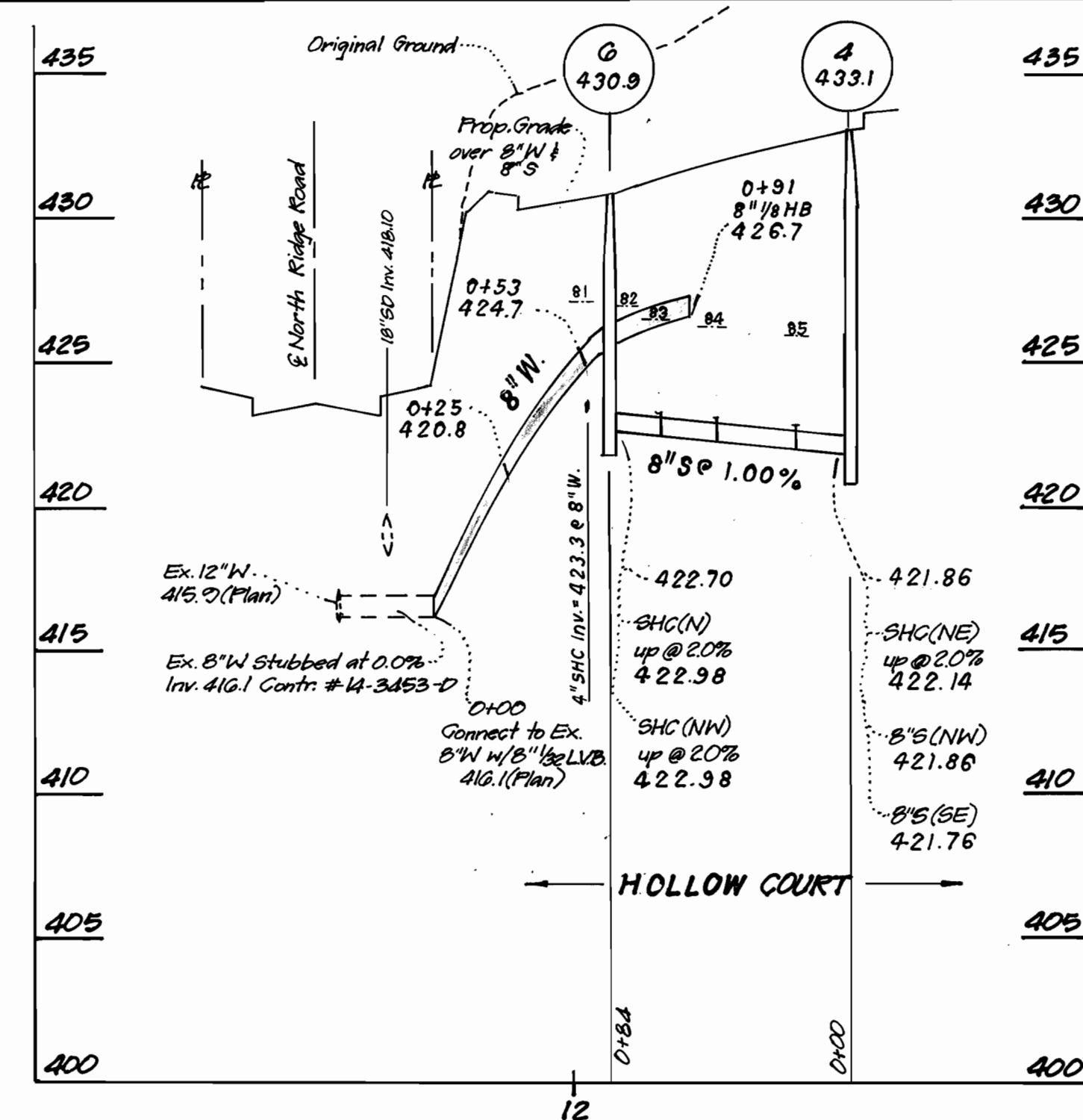
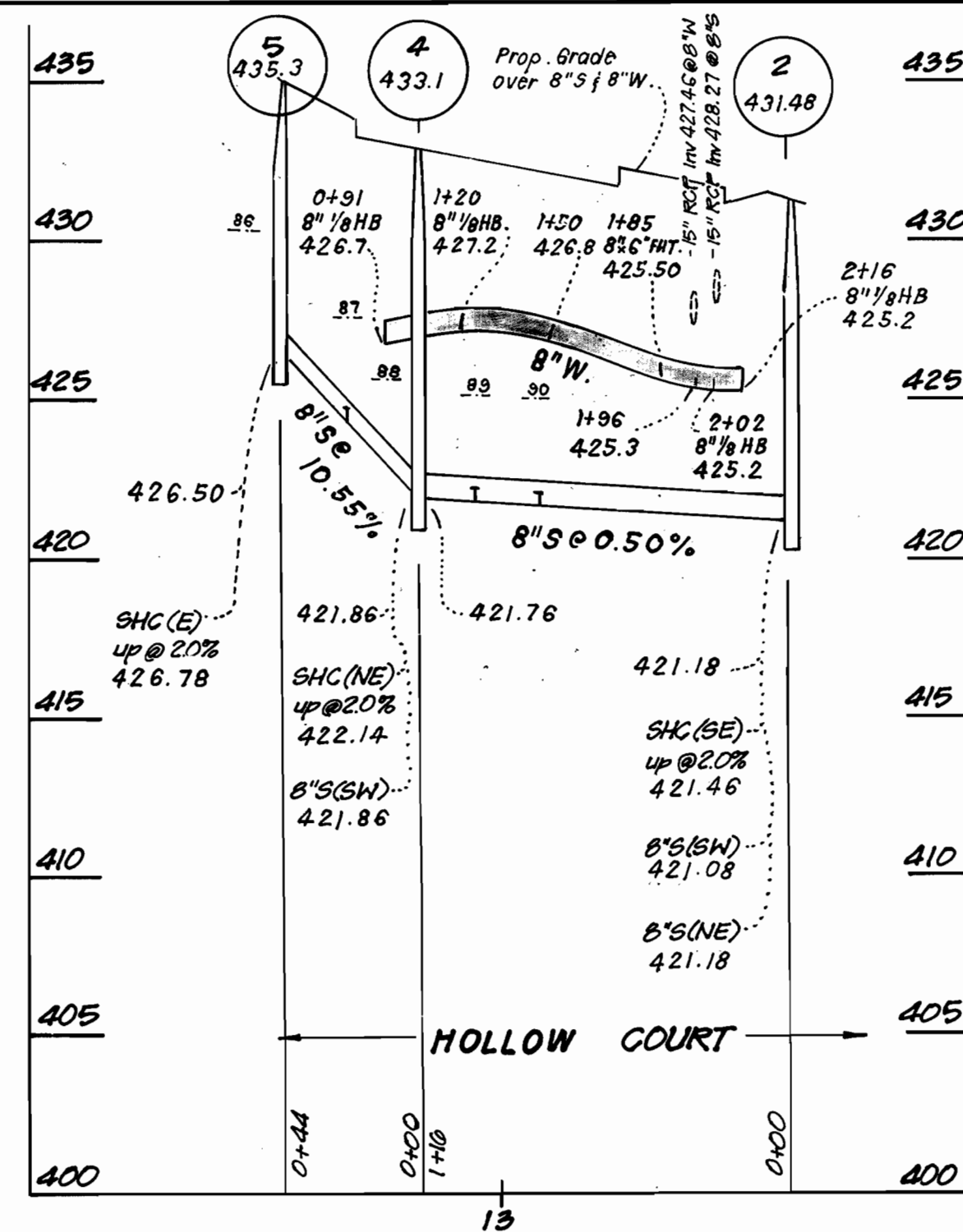
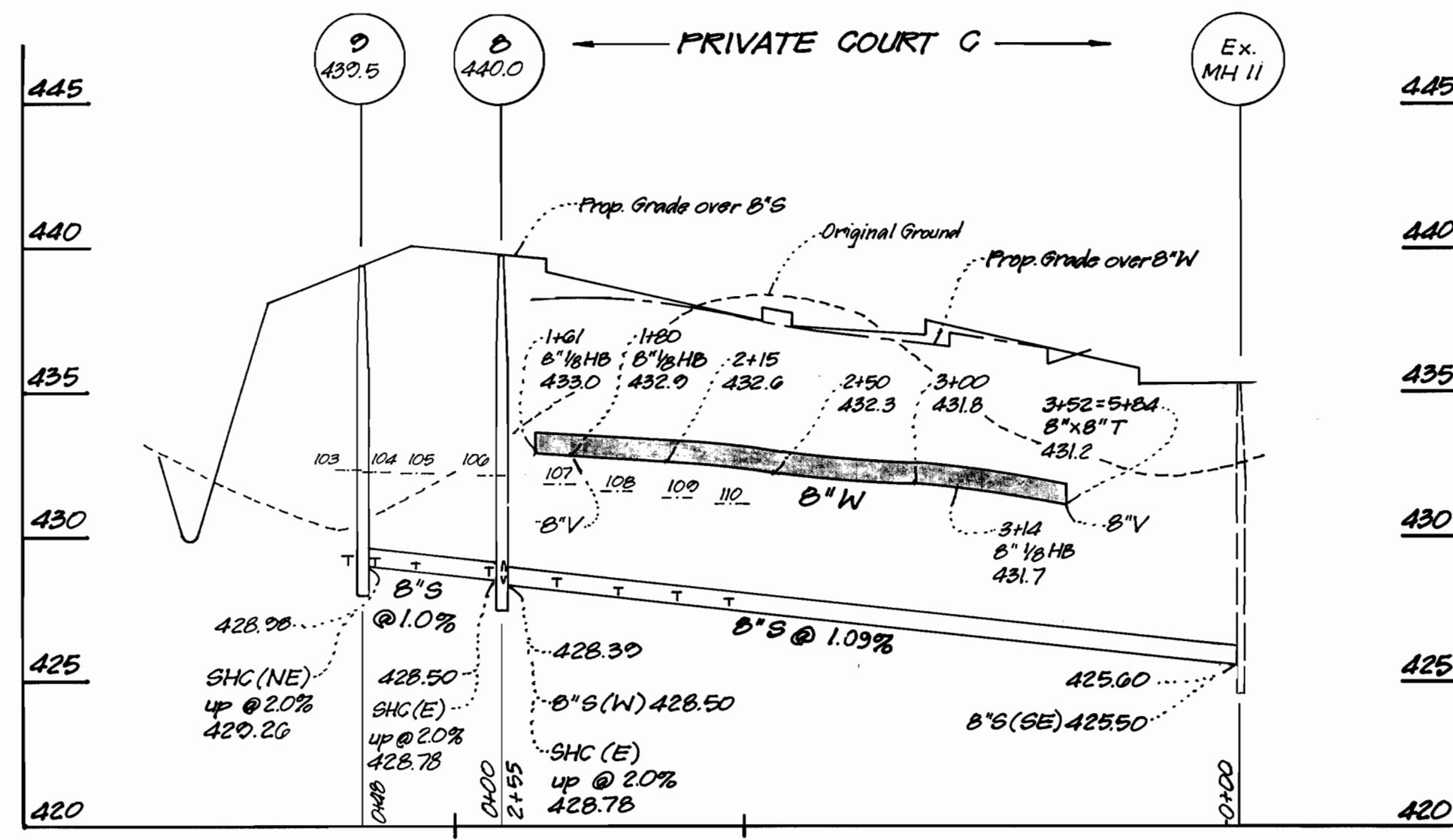
TYPICAL DETAIL OF A 4 WAY W.H.C.  
FOR LOTS A-102 THRU A-105  
NO SCALE



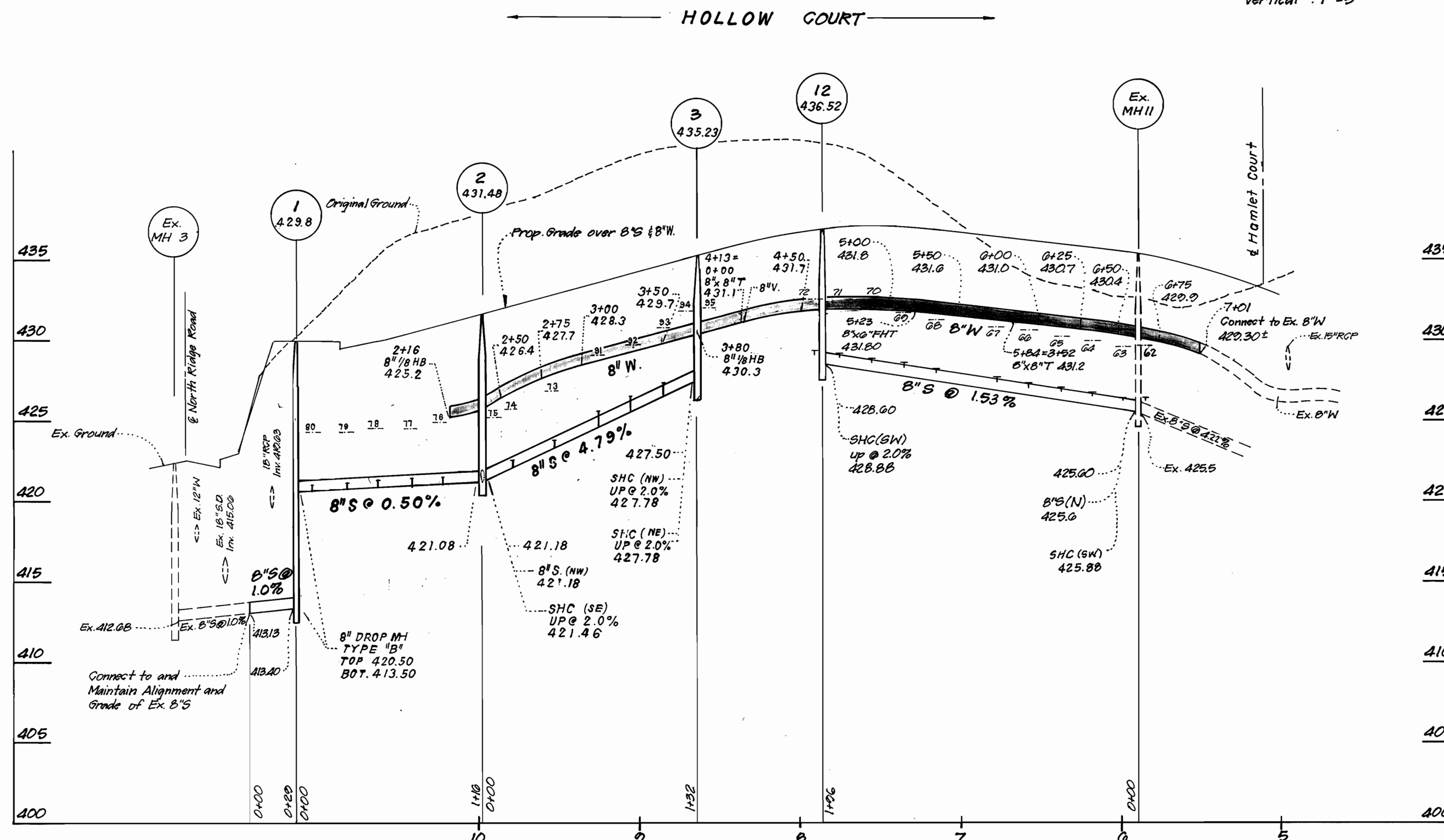
PLAN  
SCALE: 1" = 50'

DEPARTMENT OF PUBLIC WORKS HOWARD COUNTY, MARYLAND Robert B. Smith CHIEF, BUREAU OF UTILITIES	DEPARTMENT OF PLANNING & ZONING HOWARD COUNTY, MARYLAND [Signature] CHIEF, DEVELOPMENT ENGINEERING DIVISION	<b>CFI</b> CLARK · FINEFROCK & SACKETT, INC. ENGINEERS · PLANNERS · SURVEYORS 7135 MINSTREL WAY COLUMBIA, MD 21045 (410) 381-7500 BALT. (301) 621-8100 WASH.	STATE OF MARYLAND [Seal] APR 9 1998	DES: DAB DRN: PS CHK: JTR DATE: APRIL 98	CFS 2 Revised Street Names, B.L. Elev., FH Size & Min. Cel. Elev. 5-27-98 CFS 1 Added W f SHC's to Future Lots G thru 10 3-20-98	WATER AND SEWER PLAN VIEW	HOWARDS RIDGE SECTION 1 AREA 2 LOTS A-62 THRU A-112 2ND ELECTION DISTRICT HOWARD COUNTY, MARYLAND CONTRACT No. 14-3530-D	SCALE: AS SHOWN SHEET 2 OF 3
--	--	---	---	---	---	------------------------------	---	---------------------------------------

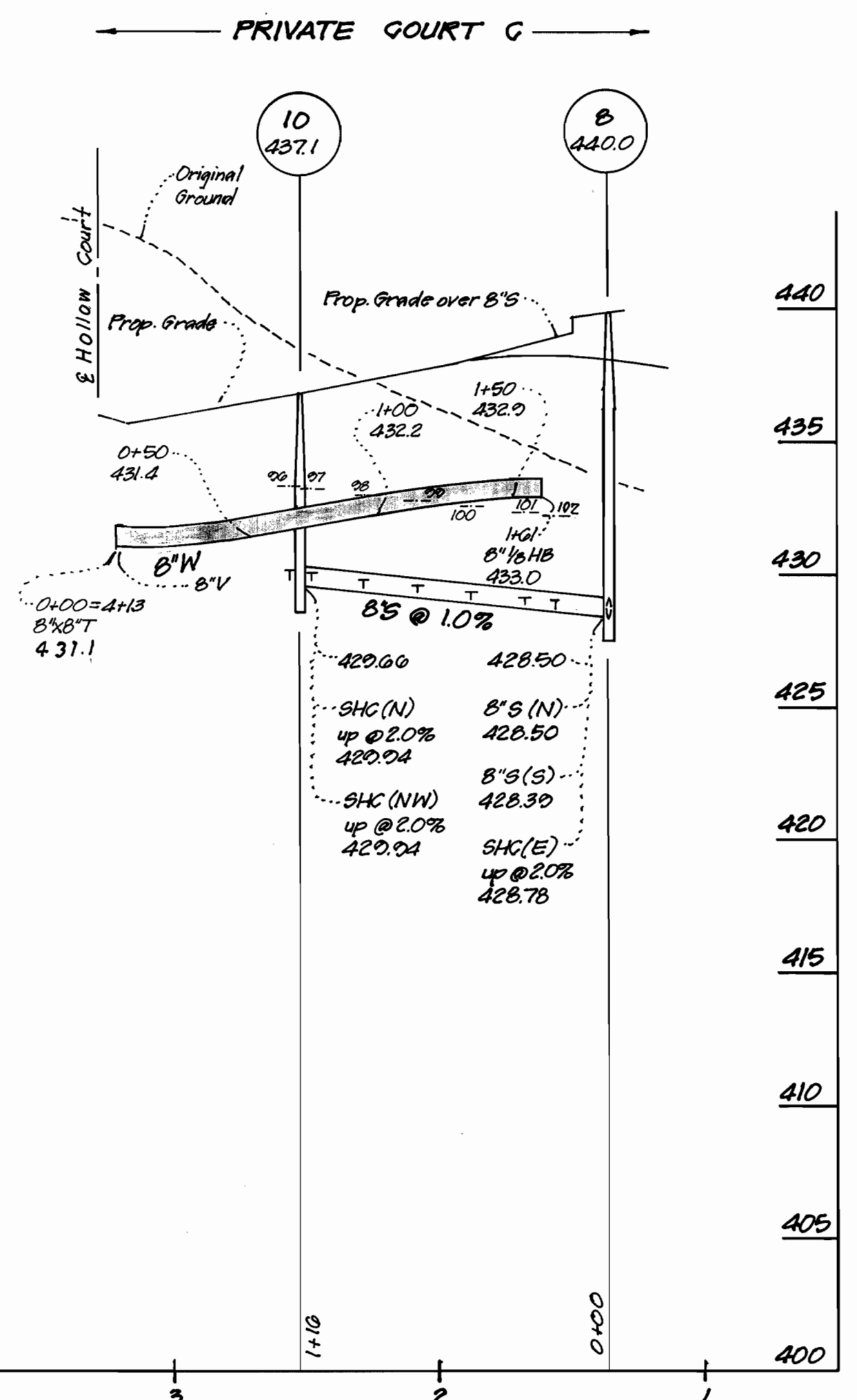




**PROFILE SCALE**  
 Horizontal : 1" = 50'  
 Vertical : 1" = 5'



FROM:	TO:	DIST.:
EXIST. MH 11 LOT A - 62		39.5'
EXIST. MH 11 LOT A - 63		40.3'
EXIST. MH 11 LOT A - 64		43.2'
EXIST. MH 11 LOT A - 65		70.4'
EXIST. MH 11 LOT A - 66		74.4'
EXIST. MH 11 LOT A - 67		105.0'
8" VALVE (6+60) LOT A - 67		52.5'
8" VALVE " LOT A - 66		49.8'
8" VALVE " LOT A - 65		90.8'
8" VALVE " LOT A - 64		71.5'
8" VALVE " LOT A - 63		75.9'
8" VALVE " LOT A - 62		102.9'
EXIST. MH 11 LOT A - 6		67.5'
EXIST. MH 11 LOT A - 7		85.6'
EXIST. MH 11 LOT A - 8		91.0'
8" VALVE (6+60) LOT A - 8		56.5'
8" VALVE " LOT A - 7		53.5'
8" VALVE " LOT A - 6		52.0'
8" VALVE " LOT A - 5		75.1'
8" VALVE " LOT A - 10		79.4'
F.H. (1+29) LOT A - 10		87.8'
F.H. " LOT A - 9		87.4'
F.H. " LOT A - 8		55.5'
F.H. " LOT A - 69		59.5'
F.H. " LOT A - 70		66.2'
F.H. " LOT A - 71		69.3'
F.H. " LOT A - 72		94.5'
F.H. (13+44) LOT A - 73		74.0'
MH 2 LOT A - 73		37.6'
MH 12 LOT A - 72		41.0'
MH 12 LOT A - 71		35.5'
MH 12 LOT A - 70		37.5'
MH 12 LOT A - 69		63.7'
MH 12 LOT A - 68		67.8'
MH 2 LOT A - 74		34.0'
F.H. (13+44) LOT A - 75		21.5'
MH 2 LOT A - 76		23.5'
MH 2 LOT A - 77		52.5'
MH 2 LOT A - 78		56.0'
MH 2 LOT A - 79		91.0'
MH 2 LOT A - 80		94.0'
MH 1 LOT A - 80		28.0'
MH 1 LOT A - 79		33.4'
MH 1 LOT A - 78		66.5'
MH 1 LOT A - 77		71.0'
F.H. (13+44) LOT A - 76		61.2'
F.H. (13+44) LOT A - 75		61.0'
F.H. " LOT A - 90		37.6'
F.H. " LOT A - 89		71.4'
F.H. " LOT A - 88		75.7'
MH 4 LOT A - 88		17.0'
MH 4 LOT A - 89		19.5'
MH 4 LOT A - 90		51.5'
MH 4 LOT A - 87		33.2'
MH 4 LOT A - 86		37.5'
MH 5 LOT A - 86		17.0'
MH 5 LOT A - 87		20.0'
MH 5 LOT A - 85		33.0'
MH 5 LOT A - 84		42.0'
MH 5 LOT A - 83		73.0'
MH 5 LOT A - 82		79.0'
MH 4 LOT A - 82		82.7'
MH 4 LOT A - 83		76.0'
MH 4 LOT A - 84		49.2'
MH 4 LOT A - 85		42.0'
MH 6 LOT A - 81		45.2'
INLET CH. LOT A - 81		91.0'
8" VALVE (6+60) LOT A - 110		62.3'
8" VALVE " LOT A - 109		34.8'
8" VALVE " LOT A - 108		31.4'
8" VALVE " LOT A - 107		30.3'
8" VALVE " LOT A - 106		32.8'
MH 8 LOT A - 106		17.5'
MH 8 LOT A - 107		20.2'
MH 8 LOT A - 108		46.5'
MH 8 LOT A - 109		93.0'
MH 8 LOT A - 110		85.0'
MH 8 LOT A - 105		24.5'
MH 8 LOT A - 104		42.5'
MH 8 LOT A - 103		69.8'
MH 10 LOT A - 103		153.3'
MH 10 LOT A - 104		148.5'
MH 10 LOT A - 105		188.4'
MH 8 LOT A - 102		18.4'
MH 8 LOT A - 101		32.0'
MH 8 LOT A - 100		62.7'
MH 8 LOT A - 99		67.0'
8" VALVE (6+60) LOT A - 99		69.7'
8" VALVE " LOT A - 100		66.0'
8" VALVE " LOT A - 101		42.0'
8" VALVE " LOT A - 102		42.0'
MH 10 LOT A - 98		21.0'
MH 10 LOT A - 97		16.1'
MH 10 LOT A - 96		30.0'
8" VALVE (6+60) LOT A - 96		79.5'
8" VALVE (6+60) LOT A - 97		91.5'
8" VALVE (6+60) LOT A - 98		96.1'
8" VALVE " LOT A - 99		23.0'
8" VALVE " LOT A - 94		51.0'
8" VALVE " LOT A - 93		55.8'
8" VALVE " LOT A - 92		88.2'
8" VALVE " LOT A - 91		91.3'



WATER AS-BUILT  
 [TABULATED]

DEPARTMENT OF PUBLIC WORKS  
 HOWARD COUNTY, MARYLAND  
 Chief, Bureau of Utilities  
 9/19/96

DEPARTMENT OF PLANNING & ZONING  
 HOWARD COUNTY, MARYLAND  
 Chief, Development Engineering Division  
 9/20/96

CLARK · FINEPROCK & SACKETT, INC.  
 ENGINEERS · PLANNERS · SURVEYORS  
 7135 MINSTREL WAY COLUMBIA, MD 21045  
 (410) 381-7500 BALT. (301) 621-8100 WASH.



DES:	DAB			
DRN:	PS			
CHK:	JTR	CF43	3	Delete Mech. Joint Restraints - Sta 0+00 to 0+91
		CF45	2	Revised Street Names & Prop. Grades - W/S Profiles
DATE:	APRIL 96			11-2-98
				5-27-98
BY:	NO.	REVISION		

600' SCALE MAP NO. 24 BLOCK NO. 6  
 WATER AND SEWER PROFILES

HOWARDS RIDGE  
 SECTION 1 AREA 2  
 LOTS A-62 THRU A-112  
 2ND ELECTION DISTRICT  
 HOWARD COUNTY, MARYLAND  
 CONTRACT No. 14-3530-D

SCALE:  
 AS SHOWN  
 SHEET  
 3 OF 3