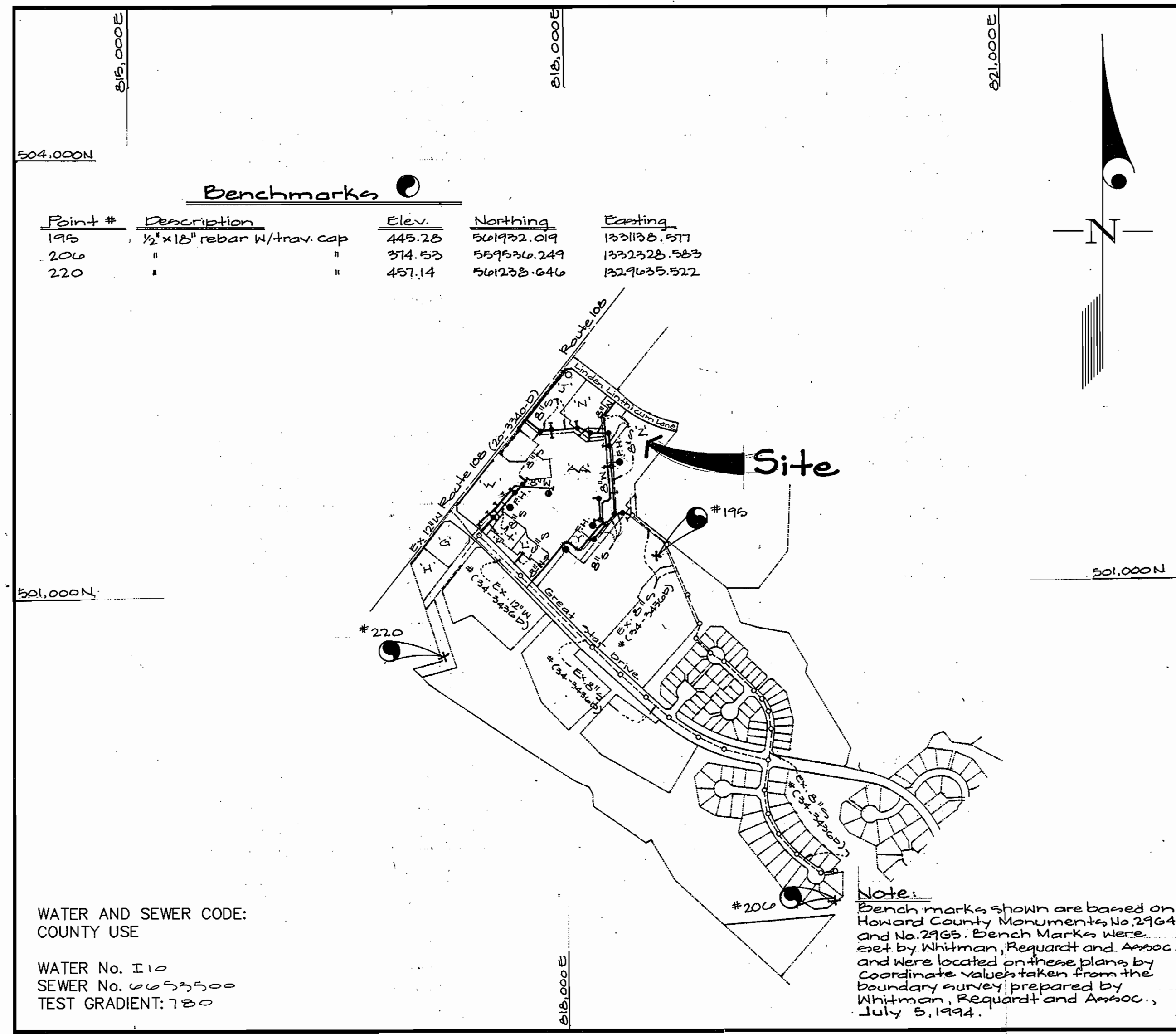


E, N, W, Z and AA

QUANTITIES				
ITEMS	QUANTITIES ESTIMATED	AS-BUILT		
		QUANTITIES	TYPE	MANUFACTURER/SUPPLIER
6" 1/2 H.B.	1 ea. Δ			
8" 1/2 H.B.	12 Ea.	12 Ea.	M/J/D.I.P.	Griffin Pipe / Water Pro.
8" Valves	4 Ea.	5 Ea.	WEDGE GATE VALVE	Mueller Co. / Water Pro.
8" Water	2549 L.F.	2697 L.F.	CL 52/D.I.P.	Atlantic States / Water Pro.
6" Valves	10 Ea. Δ	9 Ea.	WEDGE GATE VALVE	Mueller Co. / Water Pro.
Fire Hyd. & Valve	6 Ea.	6 Ea.		Mueller Co. / Water Pro.
6" Water	402 L.F. Δ	3684 L.F.	CL 52/D.I.P.	Atlantic States / Water Pro.
Manholes	13 Ea.	13 Ea.	PRE-CAST CONCRETE	Atlantic Concrete
8" Sewer	1666 L.F.	1673 L.F.	P.V.C.	J.M. Manufacturing / Water Pro.
8" Sewer (D.I.P.)	236 L.F.	236 L.F.	CL 52/D.I.P.	Atlantic States / Water Pro.
6" Sewer	473 L.F.	391 L.F.	P.V.C.	J.M. Manufacturing / Water Pro.
4" Sewer	17 L.F.	33 L.F.	P.V.C.	J.M. Manufacturing / Water Pro.
Type B Drop Conn.	9 Ea.	9 Ea.	PRE-CAST	Atlantic Concrete
Type A Drop Conn.	1 Ea.	1 Ea.	PRE-CAST	Atlantic Concrete
2" W.H.C.	20 L.F. Δ	30 L.F.	TYPE K COPPER	Reading Tube / Water Pro.

NAME OF UTILITY CONTRACTOR: **C.J. MILLER**

SURVEY AND DRAFTING DIV. CHECKBOX: AS-BUILT DATE: **02-11-96**



VICINITY MAP
SCALE: 1"=600'

TYPE OF BUILDING	Commercial
NUMBER OF UNITS	9 Parcels
NUMBER OF S.H.C.'s	14 (+ 2 existing)
NUMBER OF W.H.C.'s	12 (+ 2 existing)
DRAINAGE AREA	Middle Patuxent
TREATMENT PLANT	Little Patuxent Water Reclamation Plant/Savage

GENERAL NOTES

- PART I
- Approximate location of existing mains are shown. The contractor shall take all necessary precautions to protect existing mains and services and maintain uninterrupted supply. Any damage incurred shall be repaired immediately to the satisfaction of the Engineer at the Contractor's expense.
 - All horizontal controls are based on Maryland State Coordinates [North American Datum 1983 (NAD '83)].
 - All vertical controls are based on U.S.G.S. data.
 - All pipe elevations shown are invert elevations.
 - Clear all utilities by a minimum of 6". Clear all poles by 2'-0" minimum or tunnel as required. The owner has contacted the utility companies and has made arrangements for bracing of poles as shown on the drawings. In the event the contractor's work requires the bracing of additional poles or damages shall be deducted from money owed the contractor. The contractor shall coordinate with the utility companies to schedule the bracing of the poles.
 - For details not shown on the drawings, and for materials and construction methods use Howard County Design Manual, Volume IV, Standard Specifications and Detail for Construction (Latest Edition). The contractor shall have a copy of Volume IV on the job.
 - Where test pits have been made on existing utilities, they are noted by the symbol \square at the location of the test pit. A note or notes containing the results of the test pit or pits is included on the drawings. Existing utilities in the vicinity of the proposed work for which test pits have not been dug shall be located by the contractor two weeks in advance of construction operations at his own expense.
 - Contractor shall notify the following utility companies or agencies at least (5) working days before starting work shown on these plans:

State Highway Administration	531-5533
BGE Contractor Services	850-4620
BGE Under Ground Damage Control	787-3068
Miss Utility	1-800-257-7777
Colonial Pipeline Co.	795-1390
Howard County Department of Public Works Bureau of Utilities	313-4900
 - Trees and shrubs are to be protected from damage to maximum extent. Trees and shrubs located within the construction strip are not to be removed or damaged by the contractor.
 - Contractor shall remove trees, stumps and roots along line of excavation. Payment for such removal shall be included in the unit price bid for construction of the main.
 - The contractor shall notify the Bureau of Highways, Howard County, at (410) 313-2450 at least five (5) working days before any open cut of any County road or boring/jacking operation on County roads for laying water/sewer mains or house connections. The approval of these drawings will constitute compliance with DPW requirement per Section 18.114(a) of the Howard County Code.
- PART II - WATER
- All water mains to be D.I.P. Class 52 unless otherwise noted.
 - Tops of all water mains to have a minimum of 3'-1/2' cover unless otherwise noted.
 - Valves adjacent to tees shall be strapped to tees.
 - All fittings shall be buttressed or anchored with concrete in accordance with the Standard Details unless otherwise provided for on the drawings.
 - Fire hydrants shall be set to the bury line elevations shown on the drawings. All fire hydrants shall be restrained and buttressed with concrete in accordance with the Standard Details. Soil around the fire hydrant shall be compacted in accordance with Section 1000 and 1005 of the Standard Specifications.
 - The contractor shall not operate any water main valves on the existing water system.
 - All water house connections shall be for inside meter setting unless otherwise noted on plans or in specifications.
 - For sprinkler system for all townhomes or multi-family dwelling units shall have a minimum of 1' connection with a 3/4" meter.
- PART III - SEWER
- All sewer mains shall be DIP and P.V.C. unless otherwise noted.
 - All manholes shall be 4' - 0" inside diameter unless otherwise noted.
 - Force mains shall be D.I.P. only.
 - Manholes shown with 12" and 16" walls are for brick manholes only. Manholes designated W.T. in plan and profile shall have watertight frame and covers, Standard Detail GS.52. Where watertight frame and cover is used, set top of frame 1'-6" above finished grade unless otherwise noted on drawings.
 - House(s) with the symbol "C.N.S." indicates that cellar cannot be served.

CONTRACT No. 34-3528-D
Village of River Hill
Section 4, Area 2
Parcels J thru L, & N and Parcels W thru Z and AA
HOWARD COUNTY, MARYLAND
DEPARTMENT OF PUBLIC WORKS

Sediment Control Measures will be implemented in accordance with Section 219 of the Specifications & with Road Drawings Plan F-20-89; Drawings for Sediment & Erosion Control.

REVIEWED FOR HOWARD SOIL CONSERVATION DISTRICT AND MEETS TECHNICAL REQUIREMENT.

J. G. Washfield 8/16/96
U.S.D.A. NATURAL RESOURCES CONSERVATION SERVICE

(F-97-43)

APPROVED
John K. Robertson 8/16/96
HOWARD S.C.D.

DEPARTMENT OF PUBLIC WORKS
HOWARD COUNTY, MARYLAND

John K. Wilby 8/16/96
CHIEF, BUREAU OF UTILITIES

DEPARTMENT OF PLANNING AND ZONING
HOWARD COUNTY, MARYLAND

John K. Wilby 8/16/96
CHIEF, DEVELOPMENT ENGINEERING DIVISION

GLW GUTSCHICK LITTLE & WEBER, P.A.
CIVIL ENGINEERS, SURVEYORS, PLANNERS, LANDSCAPE ARCHITECTS
3909 NATIONAL DRIVE - SUITE 250 - BURTONSVILLE OFFICE PARK - BURTONSVILLE, MARYLAND 20866
TEL: (410) 880-1820 ~ FAX: (301) 421-4186

DES:					
DRN:					
CHK:	rot	WLP	WLP	WLP	WLP
DATE:	Aug. 1996	BY	NO	REVISION	DATE

Title Sheet

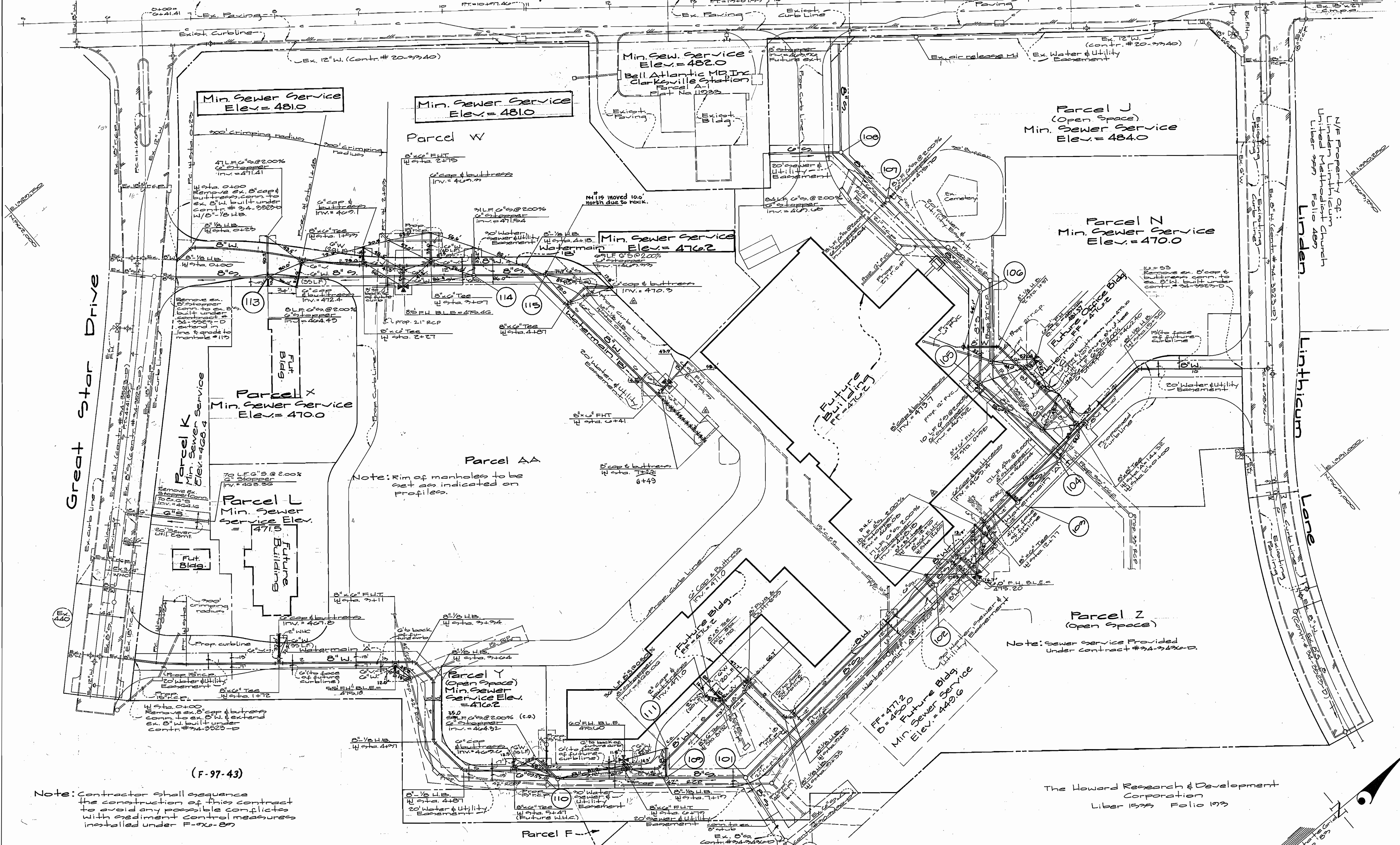
600' SCALE MAP NO. 34-3528 BLOCK NO. 4/2 & 2/1

Village of River Hill
Section 4, Area 2
Parcels J thru L & N and Parcels W thru Z & AA
Clarksville Elec. Dist. - Howard County, Md.
Contract No.: 34-3528-D

GLW FILE No. 75097

SCALE AS SHOWN
SHEET 1 OF 4

Maryland Route 108



(F-97-43)

Note: Contractor shall sequence the construction of this contract to avoid any possible conflicts with sediment control measures installed under F-97-89

Note: Sewer service provided under contract #34-3420-D.

Village of River Hill Section 4, Area 1, Phase 1

Department of Public Works
Howard County, Maryland

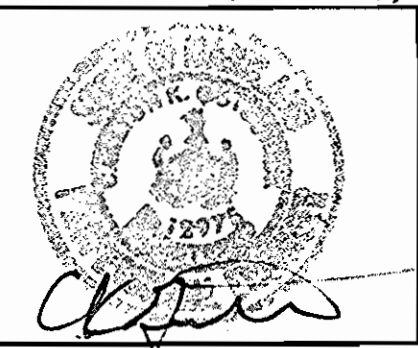
Department of Planning & Zoning
Howard County, Maryland

Jay K. Wilby R. Eng 8/19/26
Bureau of Utilities Date

Alan Dammum 8/19/26
Chief, Development Engineering Div. Date

GLW GUTSCHICK LITTLE & WEBER, P.A.
ENGINEERS, PLANNERS, SURVEYORS

3909 NATIONAL DRIVE, SUITE 250, BARTONSVILLE OFFICE PARK
BARTONSVILLE, MD 20866
(301) 421-4024



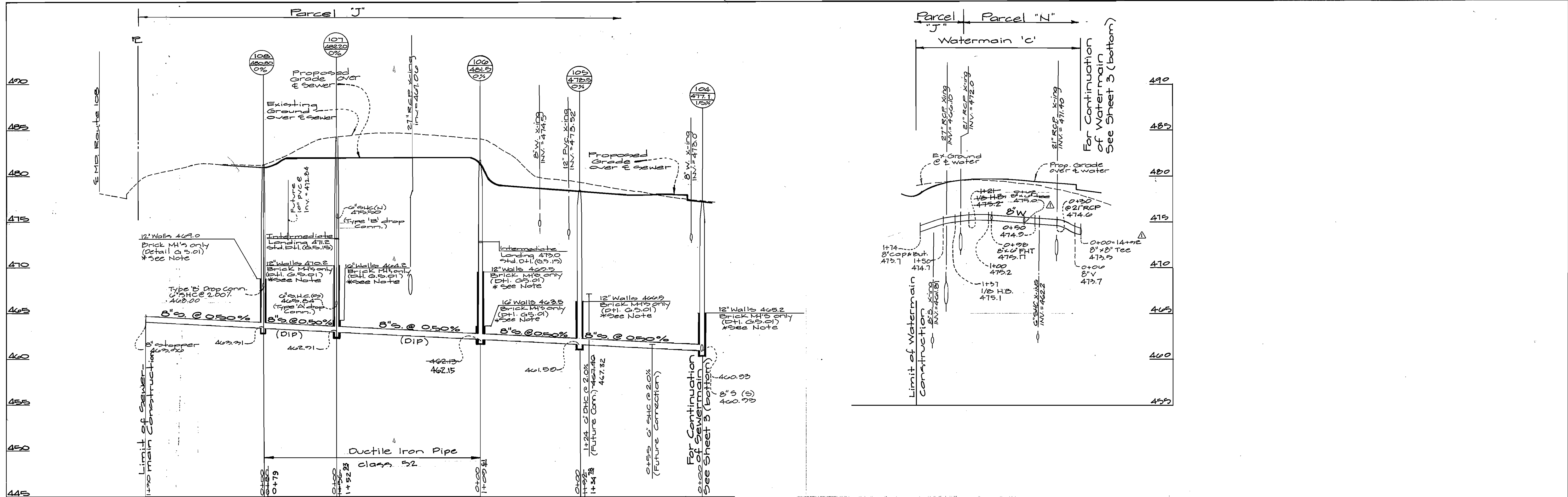
DES:	DEY				
MIT:	MJT				
DRN:	W&S				
CHK:	not				
DATE:	Aug. 1976				
BY:					
NO.:					

Water & Sewer Construction Plans
Scale: 1"=50'

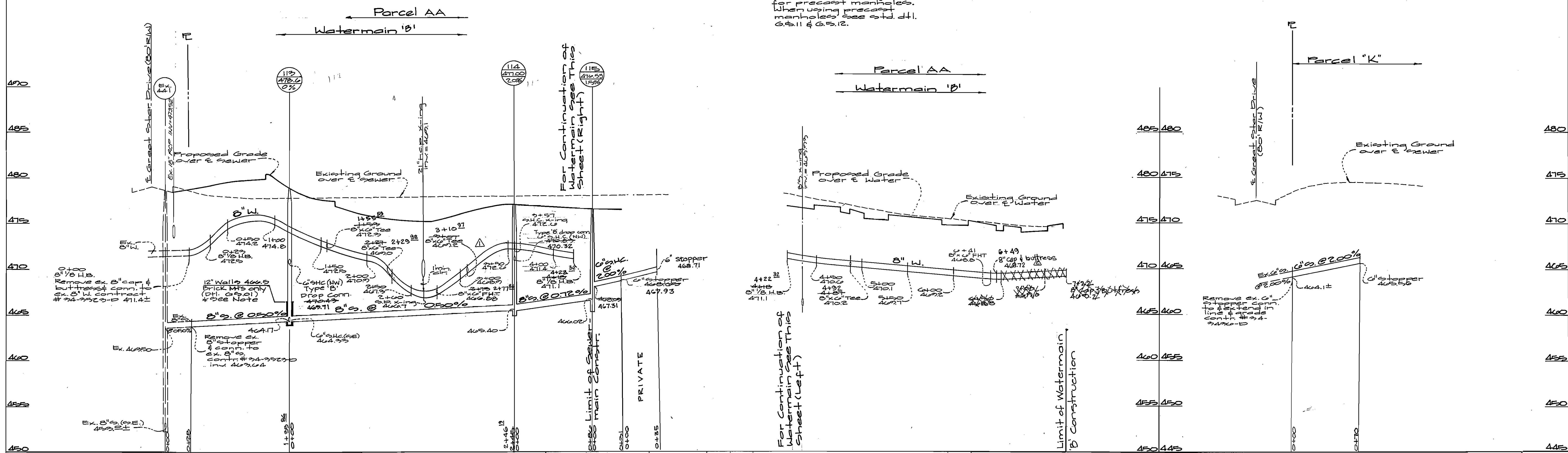
600' SCALE MAP NO. 24225 BLOCK NO. 02/2 & 1/1

Village of River Hill
Section 4, Area 2
Parcels J, K, L, & N and Parcels W, X, Y, Z and AA
Clarksville Election Dist. - Howard Co., Maryland
Contract No.: 34-3528-D

SCALE AS SHOWN
SHEET 2 OF 4



*Note: 12" & 16" Walls not required for precast manholes. When using precast manholes see std. dtl. 0.3.11 & 0.3.12.



Department of Public Works
Howard County, Maryland

Department of Planning & Zoning
Howard County, Maryland

John P. Kelly 8/1/90
Chief of Utilities

Alan Damman 8/1/90
Chief Development Engineering Div.

G.W. GUTSCHICK LITTLE & WEBER, P.A.
ENGINEERS, PLANNERS, SURVEYORS

3509 NATIONAL DRIVE - SUITE 250 - BURTONSVILLE OFFICE PARK
BURTONSVILLE, MD. 20856
(301) 421-4024



DES:	MRL MIT				
DRN:	WGSJ				
CHK:	DL				
DATE:	Aug. 1990				
BY:	kjp				
NO.:					
REVISION:	rev. watermain 'B' to relocate F.H. revised profiles to accommodate ultimate parcel occupants.				6/25/91 4/2/91
DATE:					

Water & Sewer Profiles
Scale: Horiz.: 1"=50'
Vert.: 1"=5'

600' SCALE MAP NO. 24-3528-03 BLOCK NO. 012 & 17

Village of River Hill
Section 4 Area 2
Parcels J thru L, & N and Parcels W thru Z and AA
Clarksville Election Dist. - Howard Co., Maryland
Contract No.: 34-3528-D

SCALE AS SHOWN
SHEET 4 OF 4