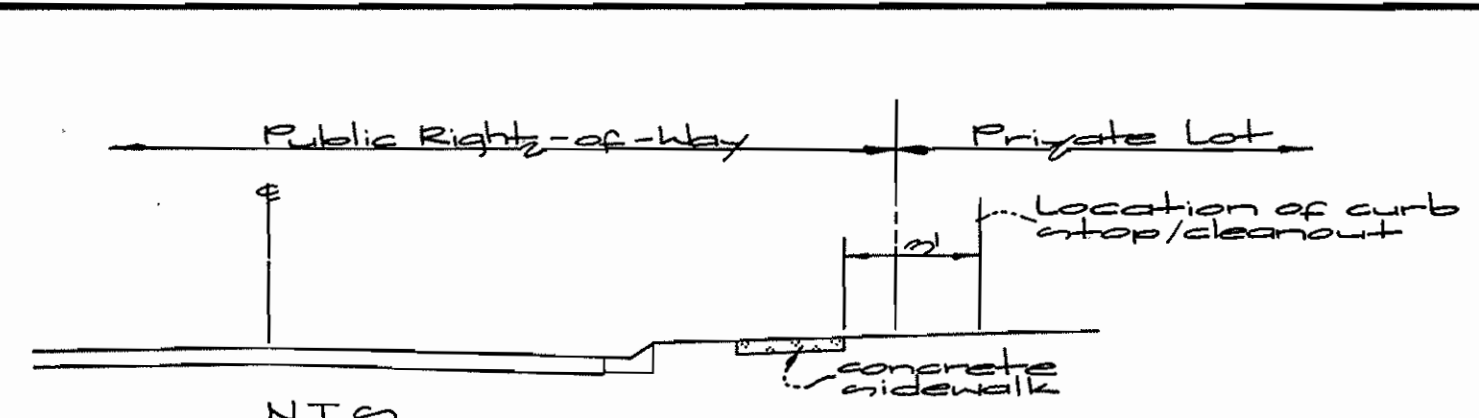


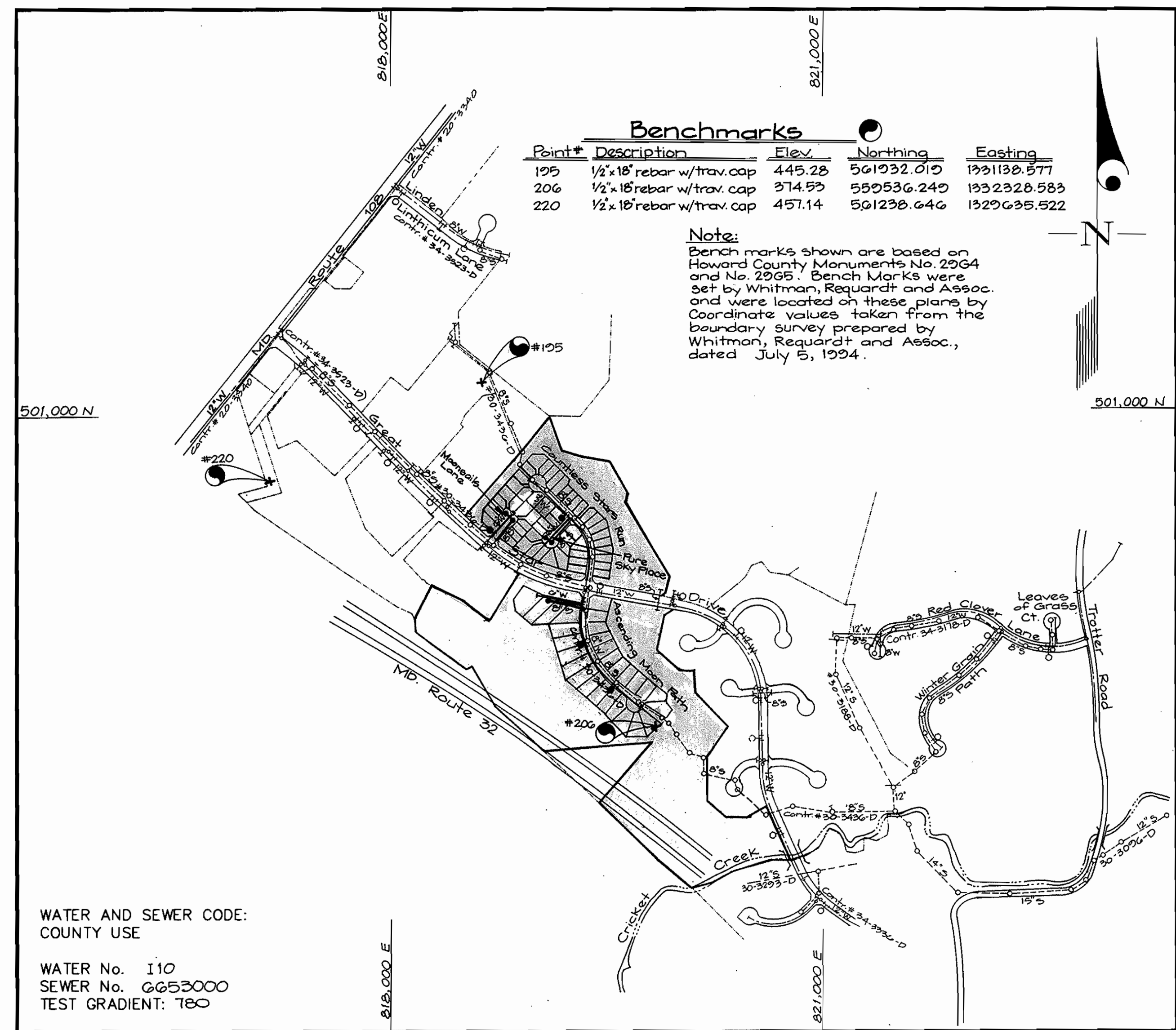
QUANTITIES				
ITEMS	QUANTITIES ESTIMATED	AS-BUILT		
		QUANTITIES	TYPE	MANUFACTURER/SUPPLIER
8" Water	1325 L.F.	1268.47'	D.I.P. CL52	GRIFFIN PIPE PRODUCTS
6" Water	277 L.F.	475'	D.I.P. CL52	GRIFFIN PIPE PRODUCTS
8" Valves	2 Ea.	2	WEDGE GATE VALVE	MUELLER CO.
6" Valves	1 Ea.	1	"	"
F.H.T. & Valve	4 Ea.	4	CENTURION FIBREGLASS	"
8"x6" Reducer	3 Ea.	3	"	"
1/2" H.B.	2 Ea.	2	"	"
1" W.H.C.	770 L.F.	1116.8'	TYPE K COPPER	READING TUBE
3/4" W.H.C.	1045 L.F.	1048'	TYPE K COPPER	"
4" Manholes	5 Ea./G2 V.F.	5	"	FREDRICK PRECAST INC.
8" Sewer	777 L.F.	820'	SDR35 PVC	J-M MANUFACTURING
4" SHC/DHC	821 L.F.	1043'	SDR35 PVC	J-M MANUFACTURING
1 1/2" Drain	4 Ea.	4	"	MUELLER CO.
4" Water	240 L.F.	240'	D.I.P. CL52	GRIFFIN PIPE PRODUCTS
4" Valves	1 Ea.	1	WEDGE GATE VALVE	MUELLER CO.
1 1/2" Water	125 L.F.	131.5'	TYPE K COPPER	READING TUBE

NAME OF UTILITY CONTRACTOR: UTILITIES UNLIMITED INC.

SURVEY AND CHECKBOX: DRAFTING DIV. AS-BUILT DATE: 3-5-98



Note: Where sidewalk is closer to right-of-way than 2'-0", curb/street/cleanout shall be placed 2'-0" from back of sidewalk. Howard County Department of Public Works shall have permission through a note on the subdivision plat, to go onto the private lots as necessary to maintain the public water & sewer connections up to the curb/street/cleanout.



WATER AND SEWER CODE: COUNTY USE
 WATER No. 110
 SEWER No. 6653000
 TEST GRADIENT: 180

VICINITY MAP
 SCALE: 1"=600'

TYPE OF BUILDING	Single Family Residential
NUMBER OF UNITS	81
NUMBER OF S.H.C.'s	27
NUMBER OF W.H.C.'s	81
DRAINAGE AREA	Middle Patuxent
TREATMENT PLANT	Little Patuxent Water Reclamation Plant, Savage

GENERAL NOTES

- PART I**
- Approximate location of existing mains are shown. The contractor shall take all necessary precautions to protect existing mains and services and maintain uninterrupted supply. Any damage incurred shall be repaired immediately to the satisfaction of the Engineer at the Contractor's expense.
 - All horizontal controls are based on Maryland State Coordinates [North American Datum 1983 (NAD '83)].
 - All vertical controls are based on U.S.G.S. data.
 - All pipe elevations shown are invert elevations.
 - Clear all utilities by a minimum of 6". Clear all poles by 2'-0" minimum or tunnel as required. The owner has contacted the utility companies and has made arrangements for bracing of poles as shown on the drawings. In the event the contractor's work requires the bracing of additional poles, any cost incurred by the owner for bracing of additional poles or damages shall be deducted from money owed the contractor. The contractor shall coordinate with the utility companies to schedule the bracing of the poles.
 - For details not shown on the drawings, and for materials and construction methods use Howard County Design Manual, Volume IV, Standard Specifications and Detail for Construction (Latest Edition). The contractor shall have a copy of Volume IV on the job.
 - Where test pits have been made on existing utilities, they are noted by the symbol at the location of the test pit. A note or notes containing the results of the test pit or pits is included on the drawings. Existing utilities in the vicinity of the proposed work for which test pits have not been dug shall be located by the contractor two weeks in advance of construction operations at his own expense.
 - Contractor shall notify the following utility companies or agencies at least (5) working days before starting work on these plans:

State Highway Administration	531-5533
BGE Contractor Services	850-4620
BGE Under Ground Damage Control	787-9068
Miss Utility	1-800-257-7777
Colonial Pipeline Co.	795-1390
Howard County Department of Public Works Bureau of Utilities	313-4900
 - Trees and shrubs are to be protected from damage to maximum extent. Trees and shrubs located within the construction strip are not to be removed or damaged by the contractor.
 - Contractor shall remove trees, stumps and roots along line of excavation. Payment for such removal shall be included in the unit price bid for construction of the main.
 - The contractor shall notify the Bureau of Highways, Howard County, at (410) 313-2450 at least five (5) working days before any open cut of any County road or boring/jacking operation on County roads for laying water/sewer mains or house connections. The approval of these drawings will constitute compliance with DPW requirement per Section 18.114(a) of the Howard County Code.
- PART II - WATER**
- All water mains to be D.I.P. Class 52 unless otherwise noted.
 - Tops of all water mains to have a minimum of 3'-1/2" cover unless otherwise noted.
 - Valves adjacent to tees shall be strapped to tees.
 - All fittings shall be buttressed or anchored with concrete in accordance with the Standard Details unless otherwise provided for on the drawings.
 - Fire hydrants shall be set to the bury line elevations shown on the drawings. All fire hydrants shall be restrained and buttressed with concrete in accordance with the Standard Details. Soil around the fire hydrant shall be compacted in accordance with Section 1000 and 1005 of the Standard Specifications.
 - The contractor shall not operate any water main valves on the existing water system.
 - All water house connections shall be for inside meter setting unless otherwise noted on plans or in specifications.
 - For sprinkler system for all townhomes or multi-family dwelling units should have a minimum of 1' connection with a 3/4" meter.
- PART III - SEWER**
- All sewer mains shall be D.I.P. and P.V.C. unless otherwise noted.
 - All manholes shall be 4'-0" inside diameter unless otherwise noted.
 - Force mains shall be D.I.P. only.
 - Manholes shown with 12" and 16" walls are for brick manholes only.
 - Manholes designated W.T. in plan and profile shall have watertight frame and covers, Standard Detail G5.52. Where watertight frame and cover is used, set top of frame 1'-6" above finished grade unless otherwise noted on drawings.
 - House(s) with the symbol "C.N.S." indicates that cellar cannot be served.

Sediment Control Measures will be implemented in accordance with Section 219 of the Specifications & with Road Drawings Plan F-26-123; Drawings 3, 6, 8, 9 and this plan, for Sediment & Erosion Control.

REVIEWED FOR HOWARD SOIL CONSERVATION DISTRICT AND MEETS TECHNICAL REQUIREMENT.

Signature: Cheryl Simms / G.S. 2/5/97
 DATE

U.S.D.A. NATURAL RESOURCES CONSERVATION SERVICE

THIS DEVELOPMENT PLAN IS APPROVED FOR SOIL EROSION AND SEDIMENT CONTROL BY THE HOWARD SOIL CONSERVATION DISTRICT.

APPROVED: Signature: [] 2/5/97
 DATE

CONTRACT No. 34-3525-D
 VILLAGE OF RIVER HILL
 SECTION 4, AREA 1, PHASE 2
 LOTS 1-85
 HOWARD COUNTY, MARYLAND
 DEPARTMENT OF PUBLIC WORKS

WATER & SEWER AS-BUILTS

GLW FILE No. 94050

DEPARTMENT OF PUBLIC WORKS
 HOWARD COUNTY, MARYLAND
 Signature: Michael A. [] 1-27-97
 DATE

DEPARTMENT OF PLANNING AND ZONING
 HOWARD COUNTY, MARYLAND
 Signature: [] 2/3/97
 DATE

GLW GUTSCHICK LITTLE & WEBER, P.A.
 CIVIL ENGINEERS, SURVEYORS, PLANNERS, LANDSCAPE ARCHITECTS
 3909 NATIONAL DRIVE - SUITE 250 - BURTONSVILLE OFFICE PARK - BURTONSVILLE, MARYLAND 20866
 TEL: (410) 880-1820 ~ FAX: (301) 421-4186

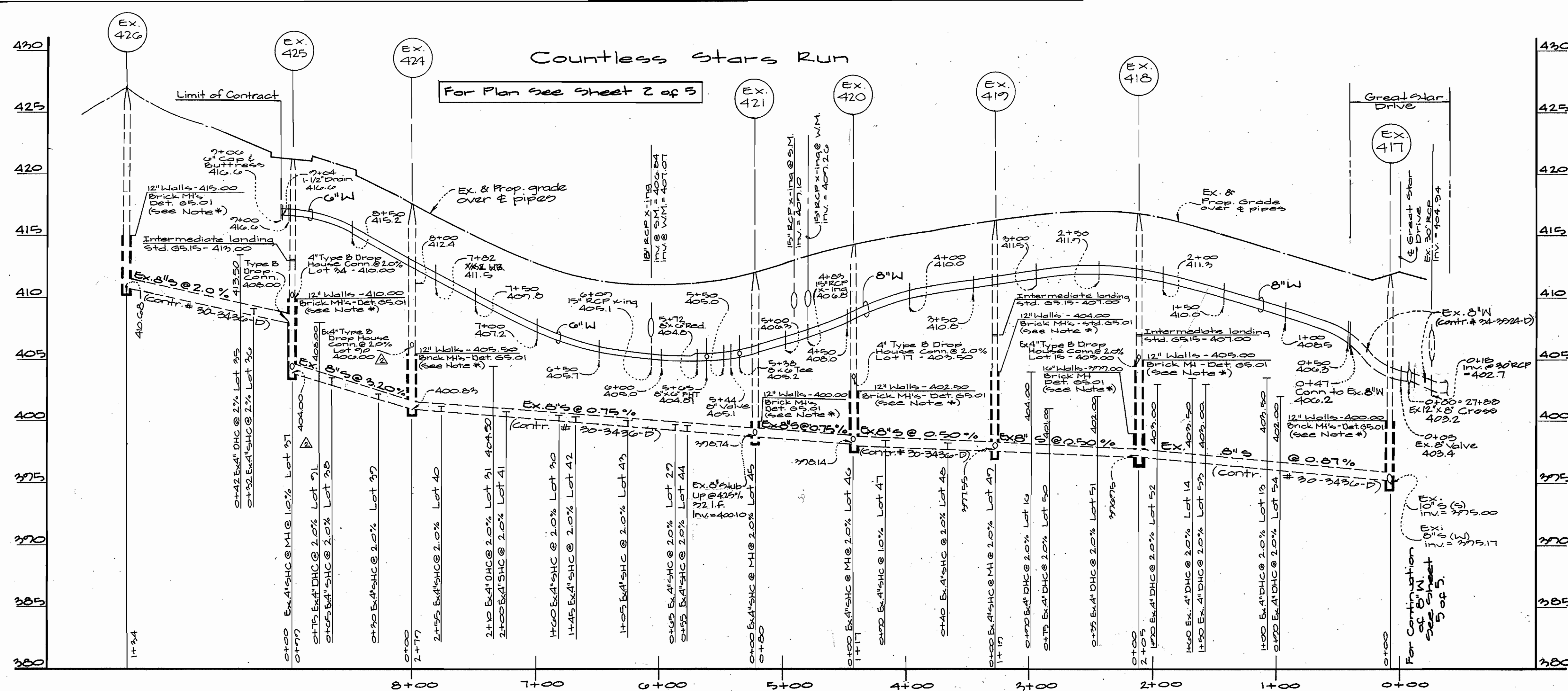


DES: GAH			
DRN: GAH			
CHK: CKG			
DATE: 1/22/96	BY: MGF	NO: []	REVISION: revise vicinity map
			DATE: 4/22/96

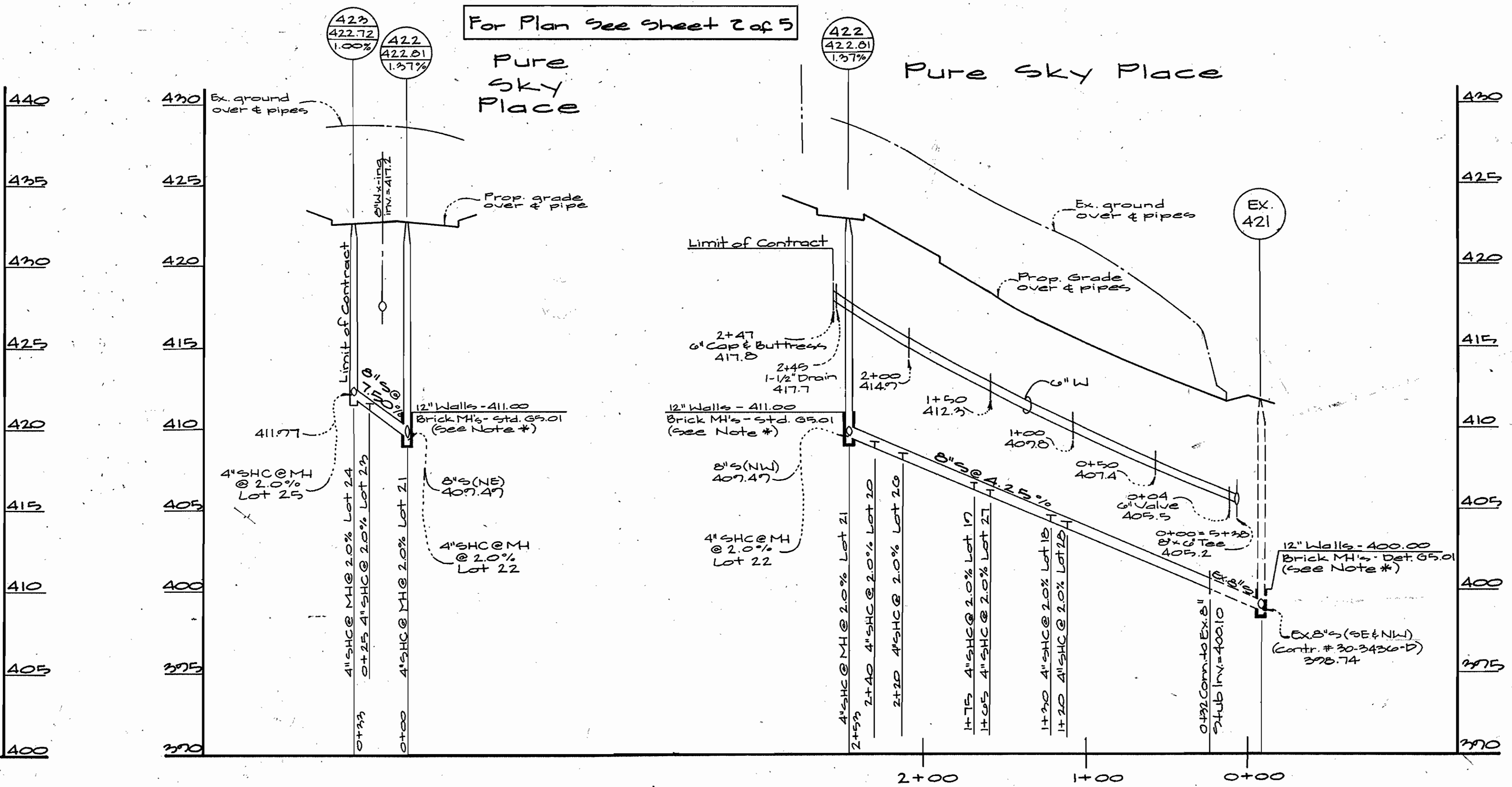
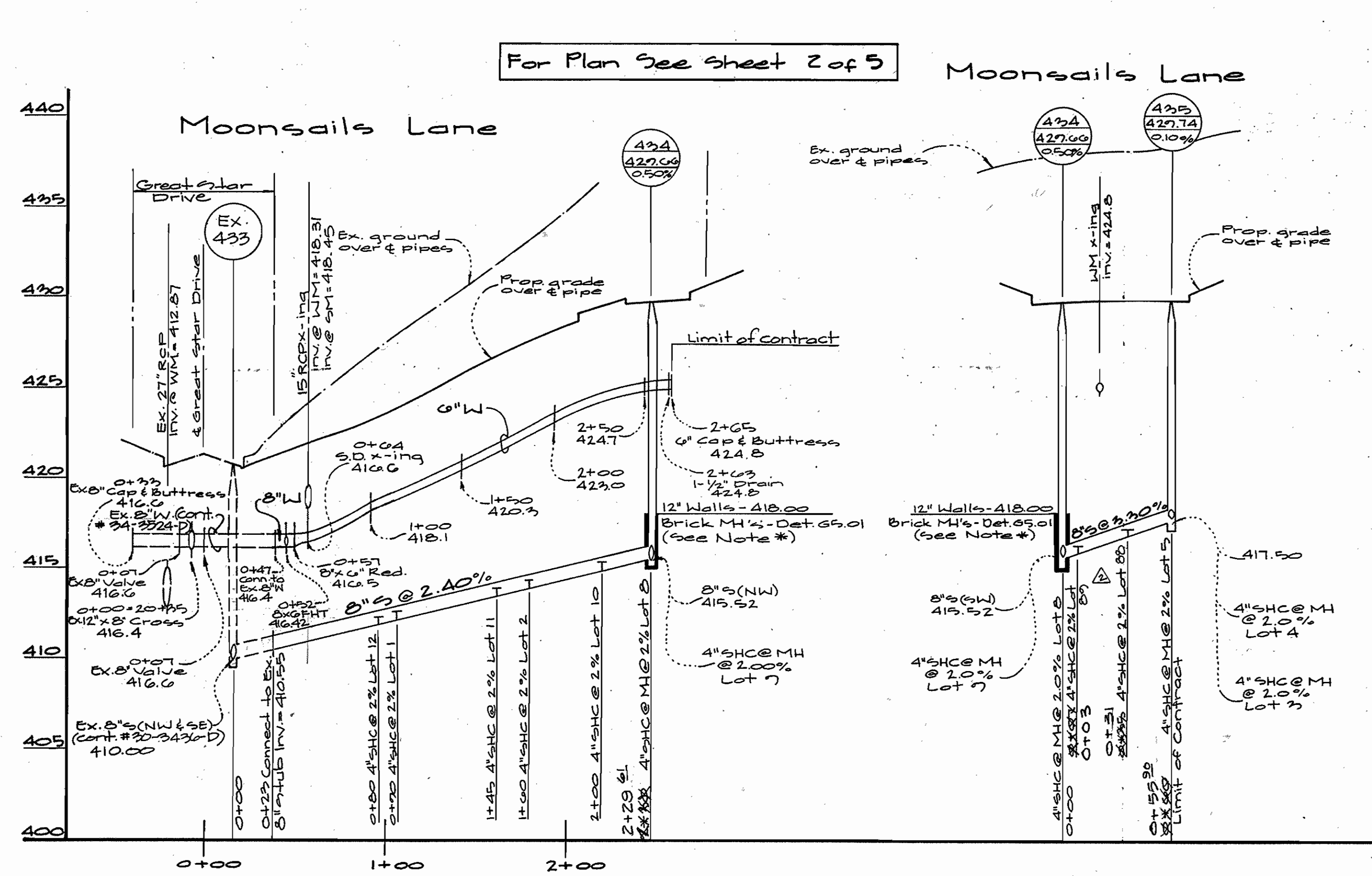
Public Water and Sewer Extension Cover Sheet
 Scale: As Shown
 600' SCALE MAP NO. 34-3525 BLOCK NO. G#12/1&7

Village of River Hill
 Section 4, Area 1, Phase 2
 Lots 1-85
 Contract No: 34-3525-D
 Ellicott City Election District No. 5 - Howard County, Maryland

SCALE AS SHOWN
 SHEET 1 OF 5



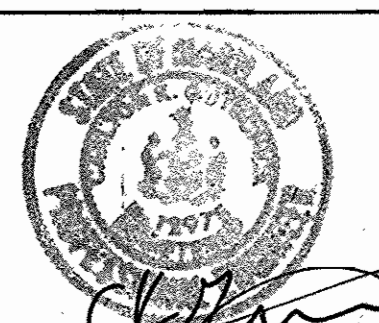
* Note: 12" & 10" Walls not required for precast Manholes. When using precast manholes see Std. Det. G5.11



DEPARTMENT OF PUBLIC WORKS
HOWARD COUNTY, MARYLAND
Michael A. Brown
Chief, Bureau of Utilities

DEPARTMENT OF PLANNING & ZONING
HOWARD COUNTY, MARYLAND
[Signature]
Chief, Development Engineering Division

GW GUTSCHICK LITTLE & WEBER, P.A.
ENGINEERS, PLANNERS, SURVEYORS
3909 NATIONAL DRIVE - SUITE 250 - BURTONTOWNE OFFICE PARK
BURTONTOWNE, MD. 20886
(301) 421-4024



DES: GAH	DATE: Jan. 1996
DRN: KLP/AT	BY: NO.
CHK: CKG	NO.
DATE: Jan. 1996	REVISION
BY: NO.	REVISION
DATE: 6/20/96	REVISION

Water & Sewer Profiles
Scale: 1" = 50' horiz.
1" = 5' vert.
600' SCALE MAP NO. 34 & 35 BLOCK NO. 6212/1&7

Village of River Hill
Section 4, Area I, Phase 2
Lots 1 - 85
Contract No.: 34-3525-D
Ellicott City Election District No. 5 Howard County, Maryland

SCALE AS SHOWN
SHEET 4 OF 5