

SEWER HOUSE CONNECTION TABLE

LOT	INV. AT R	MIN. C
A1	372.8	376.4
A2	372.1	375.8
A3	371.8	375.5
A4	370.9	374.7
A5	370.7	374.6
A6	370.1	373.8
A7	369.9	373.6
A8	369.7	373.4
A9	368.8	372.7
A10	368.2	371.9
A11	367.4	371.3
A12	366.7	370.3
A13	365.9	369.7
A14	369.0	372.9
A15	368.9	372.7
A16	368.6	372.3
A17	368.5	372.3
A18	368.1	371.9
A19	368.3	371.9
A20	367.7	371.5
A21	367.6	371.4
A22	367.4	371.2
A23	367.3	371.2
A24	367.1	370.9
A25	366.9	370.8
A26	366.9	370.6
A27	367.1	370.9
A28	358.4	362.1
A29	359.6	363.4
A30	361.2	364.7
A31	362.3	366.0
A32	363.3	366.8
A33	368.1	371.8
A34	368.2	372.1
A35	368.3	372.2
A36	368.4	372.4
A37	368.7	372.6
A38	368.9	372.7
A39	369.0	372.7
A40	369.4	373.3
A41	369.5	373.1
A42	369.1	372.7
A43	369.6	373.2
A44	369.8	373.4
A45	370.3	373.8
A46	370.4	374.0
A47	370.9	374.5
A48	371.1	374.7
A49	371.6	375.8
A50	371.9	375.6
A51	372.9	376.8
A52	373.6	377.2
A53	373.8	377.4
A54	374.2	377.9
A55	374.4	377.9
A56	374.8	378.6
A57	375.0	378.6
A58	375.5	379.2
A59	375.6	379.3

• MIN C IS MINIMUM FLOOR ELEVATION OF UNIT THAT CAN BE SERVED BY PROPOSED SANITARY CONNECTION.

CONTRACT NO. 24-3521-D

VILLAGE OF LONGREACH

SECTION 4, AREA 2, LOTS A1-A61

HOWARD COUNTY, MARYLAND

DEPARTMENT OF PUBLIC WORKS

GENERAL NOTES

PART I

- APPROXIMATE LOCATION OF EXISTING MAINS ARE SHOWN. THE CONTRACTOR SHALL TAKE ALL NECESSARY PRECAUTIONS TO PROTECT EXISTING MAINS AND SERVICES AND MAINTAIN UNINTERRUPTED SUPPLY. ANY DAMAGE INCURRED SHALL BE REPAIRED IMMEDIATELY TO THE SATISFACTION OF THE ENGINEER AT THE CONTRACTOR'S EXPENSE.
- ALL HORIZONTAL CONTROLS ARE BASED ON MARYLAND STATE COORDINATES (NORTH AMERICAN DATUM OF 1983 (NAD 83)).
- ALL VERTICAL CONTROLS ARE BASED ON U.S.G.S. DATA.
- ALL PIPE ELEVATIONS SHOWN ARE INVERT ELEVATIONS.
- CLEAR ALL UTILITIES BY A MINIMUM OF 6'. CLEAR ALL POLES BY 2' - 0" MINIMUM OR TUNNEL AS REQUIRED. THE OWNER HAS CONTACTED THE UTILITY COMPANIES AND HAS MADE ARRANGEMENTS FOR BRACING OF POLES AS SHOWN ON THE DRAWINGS. IN THE EVENT THE CONTRACTOR'S WORK REQUIRES THE BRACING OF ADDITIONAL POLES, ANY COST INCURRED BY THE OWNER FOR BRACING OF ADDITIONAL POLES OR DAMAGES SHALL BE DEDUCTED FROM MONEY OWED THE CONTRACTOR. THE CONTRACTOR SHALL COORDINATE WITH THE UTILITY COMPANIES TO SCHEDULE THE BRACING OF THE POLES.
- FOR DETAILS NOT SHOWN ON THE DRAWINGS AND FOR MATERIALS AND CONSTRUCTION METHODS USE HOWARD COUNTY DESIGN MANUAL, VOLUME IV, STANDARD SPECIFICATIONS AND DETAIL FOR CONSTRUCTION (LATEST EDITION). THE CONTRACTOR SHALL HAVE A COPY OF VOLUME IV ON THE JOB.
- WHERE TEST PITS HAVE BEEN MADE ON EXISTING UTILITIES, THEY ARE NOTED BY THE SYMBOL AT THE LOCATION OF THE TEST PIT. A NOTE OR NOTES CONTAINING THE RESULTS OF THE TEST PIT OR PITS IS INCLUDED ON THE DRAWINGS. EXISTING UTILITIES IN THE VICINITY OF THE PROPOSED WORK FOR WHICH TEST PITS HAVE NOT BEEN DUG SHALL BE LOCATED BY THE CONTRACTOR TWO WEEKS IN ADVANCE OF CONSTRUCTION OPERATIONS AT HIS OWN EXPENSE.
- CONTRACTOR SHALL NOTIFY THE FOLLOWING UTILITY COMPANIES OR AGENCIES AT LEAST FIVE WORKING DAYS BEFORE STARTING WORK SHOWN ON THESE PLANS:

STATE HIGHWAY ADMINISTRATION	531-5533
B&E CO. CONTRACTOR SERVICES	850-4620
B&E CO. UNDER GROUND DAMAGE CONTROL	787-9068
MISS UTILITY	1-800-257-7777
MISS UTILITY	1-800-257-7777
COLONIAL PIPELINE CO.	795-1390
HOWARD COUNTY DEPARTMENT OF PUBLIC WORKS	795-1390
BUREAU OF UTILITIES	313-4900

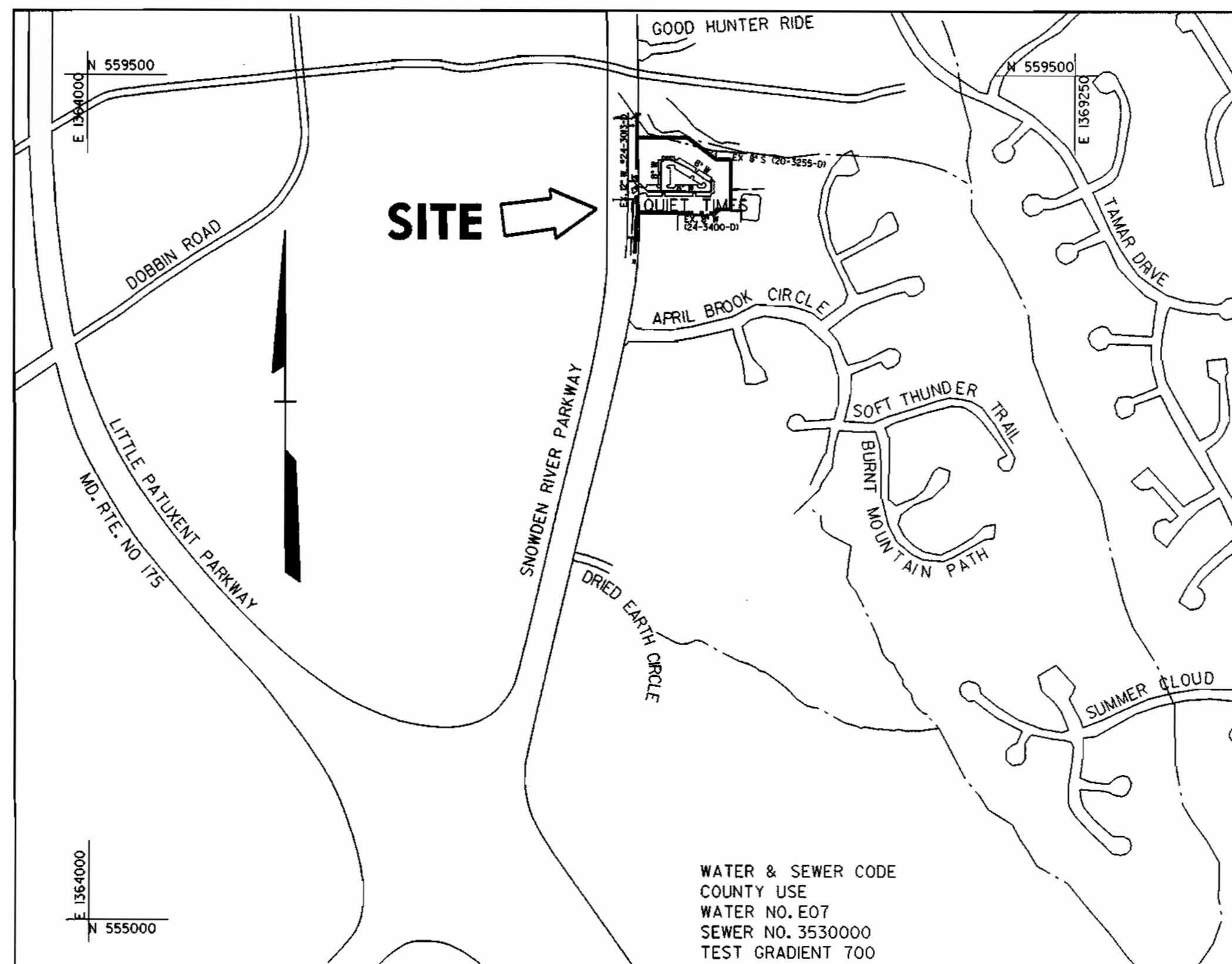
- TREES AND SHRUBS ARE TO BE PROTECTED FROM DAMAGE TO MAXIMUM EXTENT. TREES AND SHRUBS LOCATED WITHIN THE CONSTRUCTION STRIP ARE NOT TO BE REMOVED OR DAMAGED BY THE CONTRACTOR.
- CONTRACTOR SHALL REMOVE TREES, STUMPS, AND ROOTS ALONG LINE OF EXCAVATION. PAYMENT FOR SUCH REMOVAL SHALL BE INCLUDED IN THE UNIT PRICE BID FOR CONSTRUCTION OF THE MAIN.
- THE CONTRACTOR SHALL NOTIFY THE BUREAU OF HIGHWAYS, HOWARD COUNTY, AT (410) 313-2450 AT LEAST FIVE WORKING DAYS BEFORE ANY OPEN CUT OF ANY COUNTY ROAD OR BORING/JACKING OPERATION IN COUNTY ROADS FOR LAYING WATER/SEWER MAINS OR HOUSE CONNECTIONS. THE APPROVAL OF THESE DRAWINGS WILL CONSTITUTE COMPLIANCE WITH DPW REQUIREMENTS PER SECTION 18.04(A) OF THE HOWARD COUNTY CODE.

PART II - WATER

- ALL WATER MAINS TO BE D.I.P. CLASS 52 UNLESS OTHERWISE NOTED.
- TOPS OF ALL WATER MAINS TO HAVE A MINIMUM OF 3'-1/2" COVER UNLESS OTHERWISE NOTED.
- VALVES ADJACENT TO TEES SHALL BE STRAPPED TO TEES.
- ALL FITTINGS SHALL BE BUTTRESSED OR ANCHORED WITH CONCRETE IN ACCORDANCE WITH THE STANDARD DETAILS UNLESS OTHERWISE PROVIDED FOR ON THE DRAWINGS.
- FIRE HYDRANTS SHALL BE SET TO THE BURY LINE ELEVATIONS SHOWN ON THE DRAWINGS. ALL FIRE HYDRANTS SHALL BE RESTRAINED AND BUTTRESSED WITH CONCRETE IN ACCORDANCE WITH STANDARD DETAILS. SOIL AROUND THE FIRE HYDRANT SHALL BE COMPACTED IN ACCORDANCE WITH SECTION 1000 AND 1005 OF THE STANDARD SPECIFICATIONS.
- THE CONTRACTOR SHALL NOT OPERATE ANY WATER MAIN VALVES ON THE EXISTING WATER SYSTEM.
- ALL WATER HOUSE CONNECTIONS SHALL BE FOR INSIDE METER SETTING UNLESS OTHERWISE NOTED ON PLANS OR IN SPECIFICATIONS.
- SPRINKLER SYSTEM FOR ALL TOWNHOMES OR MULTI-FAMILY DWELLING UNITS SHOULD HAVE A MINIMUM OF 1" CONNECTION WITH A 3/4" METER. TWIN HOUSE CONNECTIONS WILL BE 1/2" FROM MAIN TO "Y" FITTING.

PART III - SEWER

- ALL SEWER MAINS SHALL BE DIP AND P.V.C. UNLESS OTHERWISE NOTED.
- ALL MANHOLES SHALL BE 4' - 0" INSIDE DIAMETER UNLESS OTHERWISE NOTED.
- FORCE MAINS SHALL BE D.I.P. ONLY.
- MANHOLES SHOWN WITH 12" AND 16" WALLS ARE FOR BRICK MANHOLES ONLY.
- MANHOLES DESIGNATED W.T. IN PLAN AND PROFILE SHALL HAVE WATERTIGHT FRAME AND COVERS. STANDARD DETAIL 05-52 WHERE WATERTIGHT MANHOLE FRAME AND COVER IS USED, SET TOP OF FRAME 1' - 6" ABOVE FINISHED GRADE UNLESS OTHERWISE NOTED ON THE DRAWINGS.
- HOUSES WITH THE SYMBOL "C.N.S." INDICATES THAT CELLAR CANNOT BE SERVED.



VICINITY MAP

SCALE: 1" = 600'

BENCHMARK

DESCRIPTION

STATION 361A (CONCRETE MONUMENT)
N 55536.443, E 136585.2470 (FOR HORIZONTAL CONTROL ONLY)
STATION IS LOCATED AT THE SOUTHEAST CORNER OF THE INTERSECTION OF SNOWDEN RIVER PARKWAY AND RTE. 175 3' FROM CURB AND 5.7' FROM GUARDRAIL END

BENCHMARK

DESCRIPTION

STATION 370R (1/4" REBAR)
N 55735.8360, E 1366685.9660 (FOR HORIZONTAL CONTROL ONLY)
STATION IS LOCATED 0.45+ MILES NORTH OF RTE. 175 AND 46'+ EAST OF THE EAST CURB OF SNOWDEN RIVER PARKWAY

BENCHMARK

DESCRIPTION

STATION 2643006 (CONCRETE MONUMENT)
ELEV. 437.461 (FOR VERTICAL CONTROL ONLY)
STATION IS LOCATED ON BG&E TRANSMISSION ON A RISE BETWEEN BOSE TOWERS #14 & #14-E 792'+ N.E. OF DOBBIN RD.

BENCHMARK

DESCRIPTION

STATION 2542001 (CONCRETE MONUMENT)
ELEV. 426.911 (FOR VERTICAL CONTROL ONLY)
STATION IS LOCATED ON BG&E TRANSMISSION LINES 1060'+ S.W. OF DOBBIN ROAD

WATER & SEWER CODE
COUNTY USE
WATER NO. E07
SEWER NO. 3530000
TEST GRADIENT 700

TYPE OF BUILDING:	TOWNHOUSE
NO. OF LOTS / PARCELS	61
NO. OF WATER HOUSE CONNECTIONS:	59
NO. OF SEWER HOUSE CONNECTIONS:	59
DRAINAGE AREA:	DORSEY RUN
TREATMENT PLANT:	LITTLE PATUXENT WATER QUALITY MANAGEMENT CENTER, SAVAGE, HOWARD COUNTY

ITEM	QUANTITIES ESTIMATED	QUANTITIES AS-BUILT		
		QUANTITIES	TYPE	MANUFACTURER/SUPPLIER
8" W.	928	841	D.I.P.	U.S. STEEL
6" W.	25	21	D.I.P.	U.S. STEEL
8" S.	1037	1087	P.V.C.	E.T.I.
4" SHC	691	1,028	P.V.C.	E.T.I.
1/2" WHC	768	807	TYPE K	CAMBRIDGE-LEE
1" WHC	489	608	TYPE K	CAMBRIDGE-LEE
FIRE HYDRANT	2	2	A 423	MUELLER CO.
4" DIA. MH	10	10	MHR TOG	QUINN MACHINE CO.
8" VALVES	3	3	GRATE	MUELLER CO.
6" VALVES	2	2	GRATE	MUELLER CO.

NAME OF UTILITY CONTRACTOR: ROKINI CONST.
SURVEY AND DRAFTING DIVISION AS-BUILT DATE: 8-12-98

REVIEWED FOR HOWARD SOIL CONSERVATION DISTRICT AND MEETS TECHNICAL REQUIREMENT

John P. Roberts 9/27/96
SIGNATURE DATE

THIS DEVELOPMENT PLAN IS APPROVED FOR SOIL EROSION AND SEDIMENT CONTROL BY THE HOWARD COUNTY CONSERVATION DISTRICT.

APPROVED *J. B. Warfield* 9/27/96
HOWARD GCD SIGNATURE DATE

SEDIMENT CONTROL MEASURES WILL BE IMPLEMENTED IN ACCORDANCE WITH SECTION 219 OF THE SPECIFICATIONS AND WITH ROAD CONSTRUCTION PLANS F-96-86.

DEPARTMENT OF PUBLIC WORKS
HOWARD COUNTY, MARYLAND

DEPARTMENT OF PLANNING & ZONING
HOWARD COUNTY, MARYLAND

DMW
Daft · McCune · Walker, Inc.
A Team of Land Planners, 200 East Pennsylvania Avenue
Landscape Architects, Towson, Maryland 21286
Engineers, Surveyors & Environmental Professionals 410 296 3333
Fax 296 4705



DESIGN BY: CEV
DRAWN BY: CEV
CHECKED BY: JWR
DATE: APR 96

BY	NO.	REVISION	DATE

600 SCALE MAP NO. 37 BLOCK NO. 7

TITLE SHEET

VILLAGE OF LONGREACH
SECTION 4 AREA 2
LOTS A1-A61
8th ELECTION DISTRICT
CONTRACT NO. 24-3521-D

SCALE AS SHOWN
SHEET 1 OF 3

Sewer House Connection Stations

From SMH 10 to SMH 11

Station Lot Number

- 0+10 A42
- 0+36 A43
- 0+43 A44
- 0+68 A45
- 0+72 A46
- 0+98 A47
- 1+11 A48
- 1+35 A49
- 1+50 A50
- 2+00 A51
- 2+35 A52
- 2+43 A53
- 2+66 A54
- 2+75 A55
- 3+00 A56
- 3+07 A57
- 3+36 A58
- 3+36 A59

From SMH9 to SMH10

Station Lot Number

- 0+00 A33
- 0+30 A34
- 0+34 A35
- 0+62 A36
- 0+68 A37
- 0+89 A38
- 0+89 A39
- 0+89 A40
- 0+89 A41

From SMH2 to SMH 9

Station Lot Number

- 0+13 A26
- 0+33 A27

From SMH8 to SMH 12

Station Lot Number

- 0+00 A28
- 0+12 A29
- 0+30 A30
- 0+43 A31
- 0+52 A32

From SMH2 to SMH 3

Station Lot Number

- 1+20 A19
- 1+02 A20
- 0+93 A21
- 0+69 A22
- 0+62 A23
- 0+38 A24
- 0+18 A25

From SMH3 to SMH4

Station Lot Number

- 0+76 A14
- 0+68 A15
- 0+42 A16
- 0+36 A17
- 0+06 A18

From Ex. SMH 305 to Ex. SMH 306

Station Lot Number

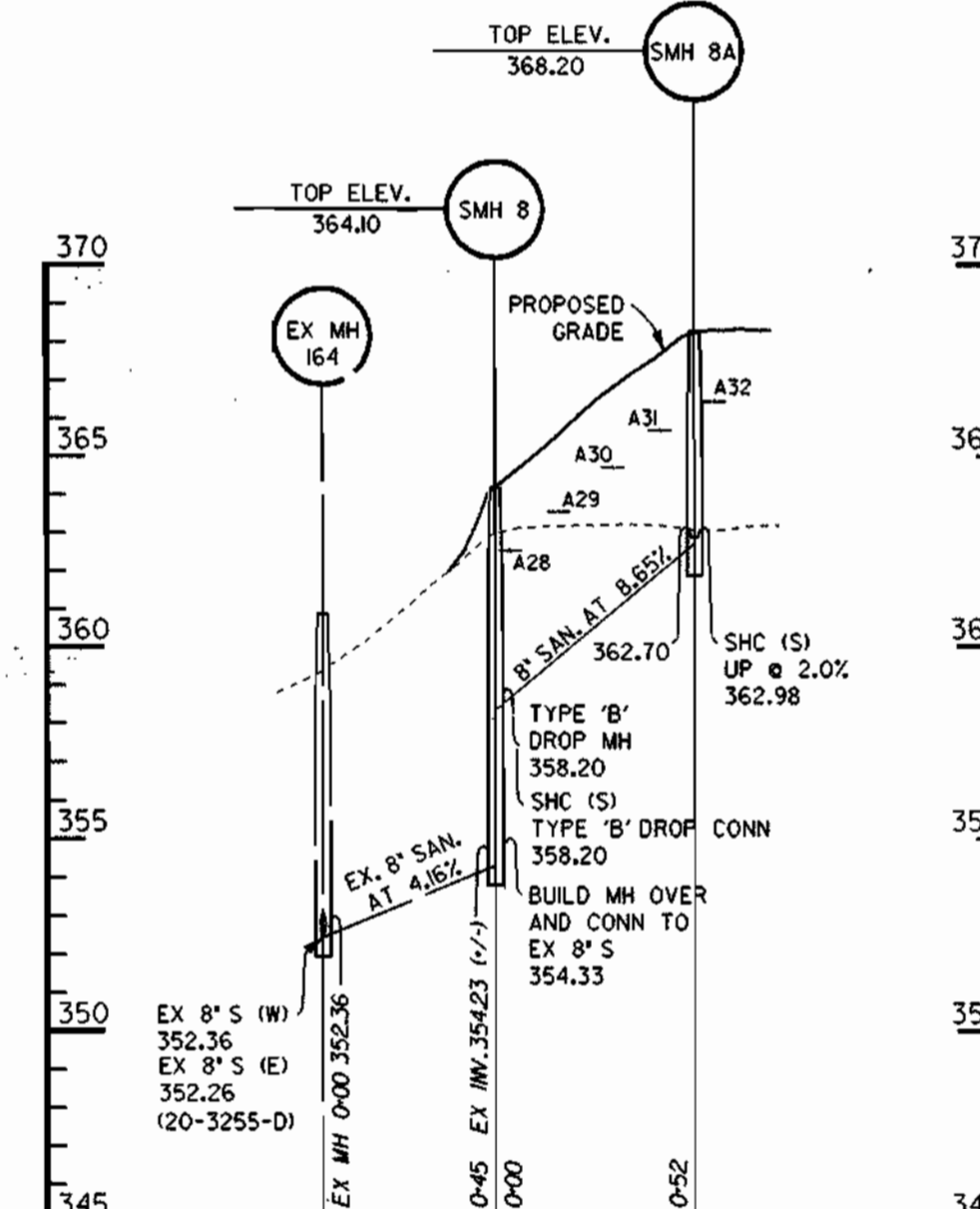
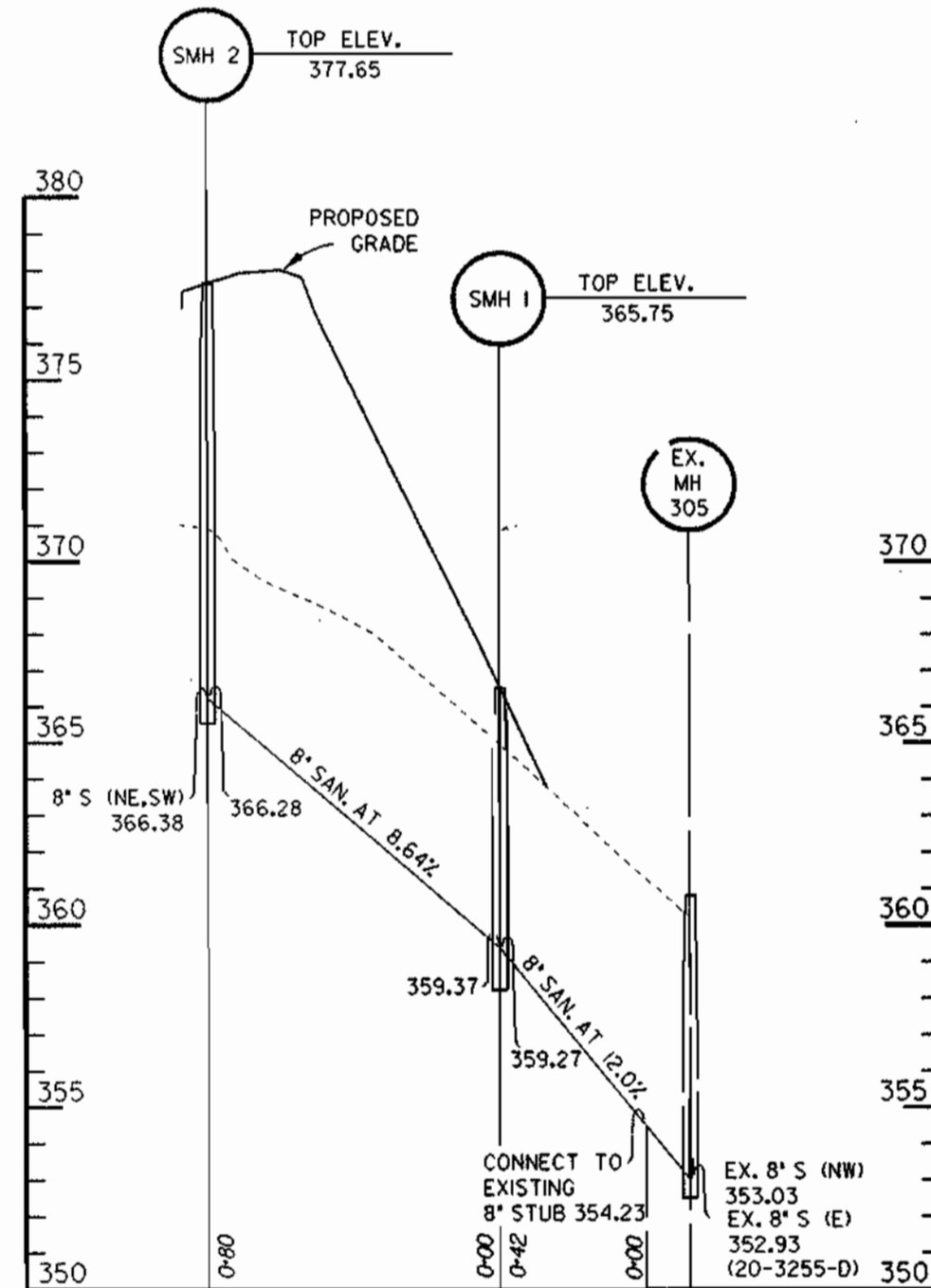
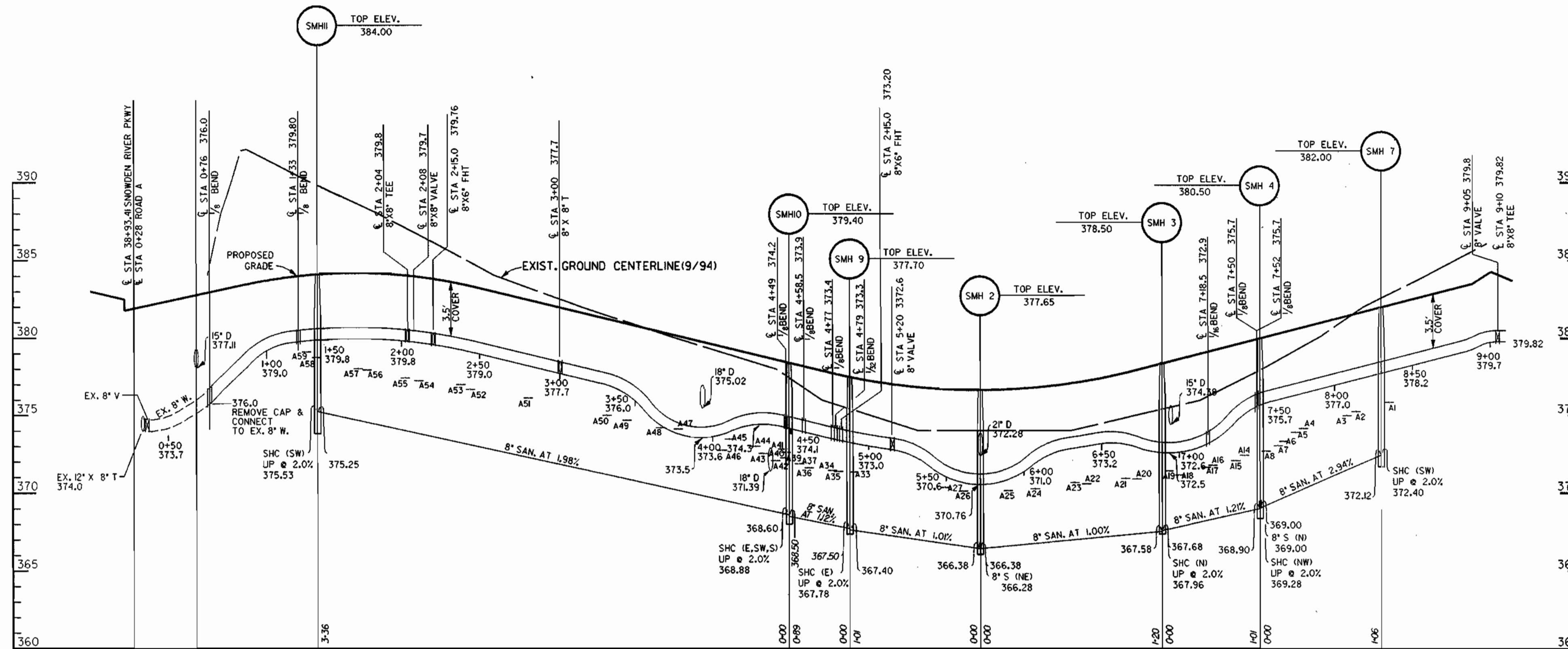
- 3+46 A9
- 3+30 A10
- 3+16 A11
- 2+99 A12
- 2+87 A13

From SMH 4 to SMH 7

Station Lot Number

- 1+06 A1
- 0+90 A2
- 0+84 A3
- 0+54 A4
- 0+48 A5
- 0+24 A6
- 0+17 A7
- 0+00 A8

- CONNECTS TO MH
- TWIN 6" SHC



PROFILE SCALE
HORIZONTAL 1"=50'
VERTICAL 1"=5'

DEPARTMENT OF PUBLIC WORKS
HOWARD COUNTY, MARYLAND

DEPARTMENT OF PLANNING & ZONING
HOWARD COUNTY, MARYLAND

DMW
Daft · McCune · Walker, Inc.
A Team of Land Planners, 200 East Pennsylvania Avenue
Landscape Architects, Towson, Maryland 21286
Engineers, Surveyors & Environmental Professionals 410 296 3333
Fax 296 4705



DESIGN BY:	RTP				
DRAWN BY:	RTP				
CHECKED BY:	JWR				
DATE:	DEC 1996	BY	NO.	REVISION	DATE

WATER & SEWER PLANS

VILLAGE OF LONGREACH

SECTION 4 AREA 2

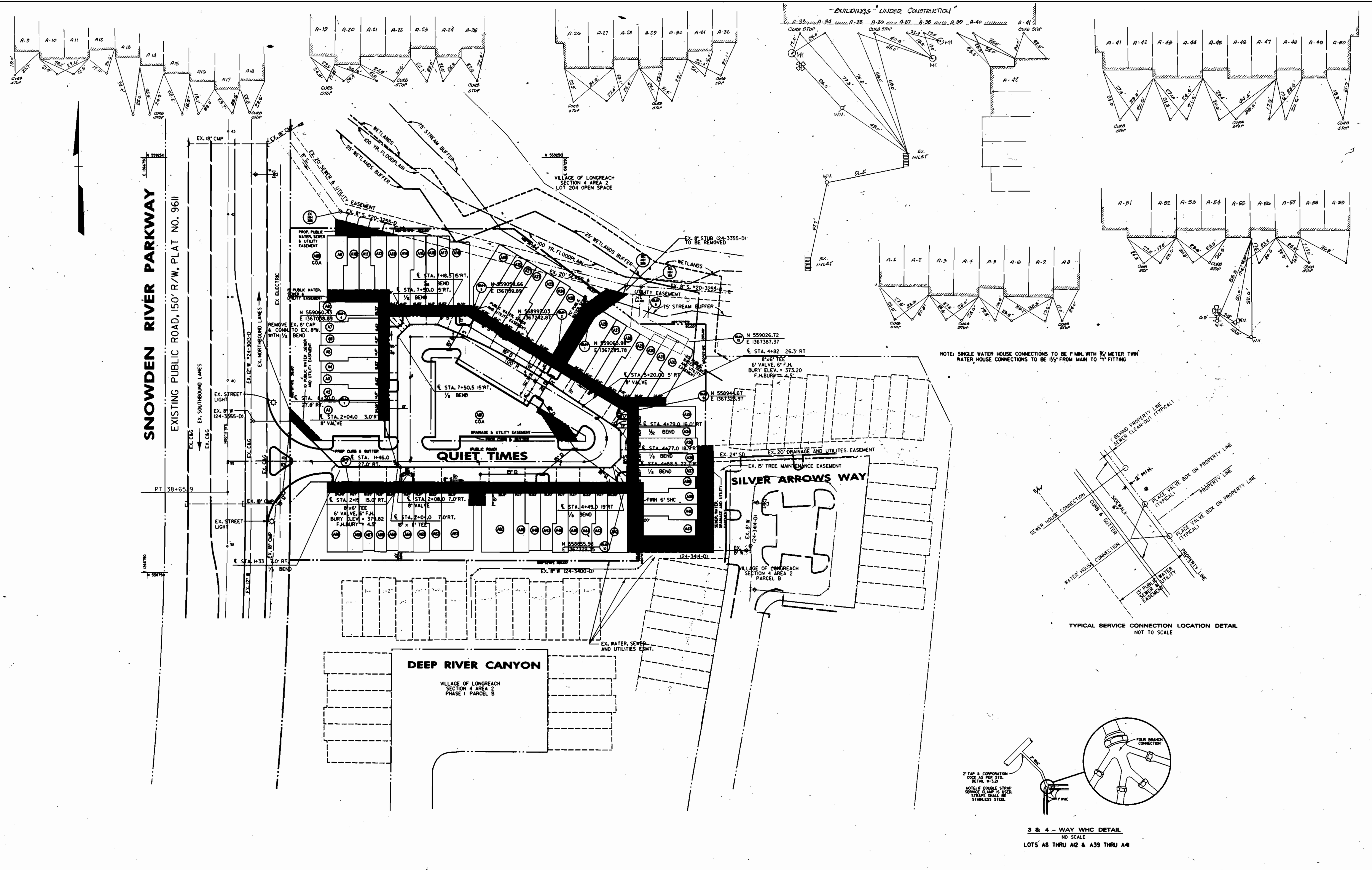
LOTS A1-A61

6TH ELECTION DISTRICT

CONTRACT NO. 34-3521-D

SCALE
AS
SHOWN

SHEET
3 OF 3



DEPARTMENT OF PUBLIC WORKS
HOWARD COUNTY, MARYLAND

Robert J. ...
9-23-96
CHIEF - BUREAU OF UTILITIES - DATE

DEPARTMENT OF PLANNING & ZONING
HOWARD COUNTY, MARYLAND

Allen ...
10/2/96
CHIEF - DEVELOPMENT ENGINEERING DIVISION - DATE

DMW
Daft · McCune · Walker, Inc.

A Team of Land Planners, 200 East Pennsylvania Avenue
Landscape Architects, Towson, Maryland 21286
Engineers, Surveyors & Environmental Professionals 410 296 3333
Fax 296 4705



DESIGN BY:	CVA/TTP				
DRAWN BY:	CVA/TTP				
CHECKED BY:	JWR				
DATE:	APR 96	BY NO.		REVISION	DATE
				1 - BUILDING CONDITIONS ADDED TO PLAN	9/96

WATER ABSEULT ONLY
WATER & SEWER PLANS

600 SCALE MAP NO. 37 BLOCK NO. 7

VILLAGE OF LONGREACH
SECTION 4 AREA 2
LOTS A1-A61
6th ELECTION DISTRICT

CONTRACT NO. 24-3521-D

SCALE
1" = 50'
SHEET
2 OF 3

SEWER HOUSE CONNECTION TABLE

LOT	INV. AT R	MIN. C
A1	372.8	376.4
A2	372.1	375.8
A3	371.8	375.5
A4	370.9	374.7
A5	370.7	374.6
A6	370.1	373.8
A7	369.9	373.6
A8	369.7	373.4
A9	368.8	372.7
A10	368.2	371.9
A11	367.4	371.3
A12	366.7	370.3
A13	365.9	369.7
A14	369.0	372.9
A15	368.9	372.7
A16	368.6	372.3
A17	368.5	372.3
A18	368.1	371.9
A19	368.3	371.9
A20	367.7	371.5
A21	367.6	371.4
A22	367.4	371.2
A23	367.3	371.2
A24	367.1	370.9
A25	366.9	370.8
A26	366.9	370.6
A27	367.1	370.9
A28	358.4	362.1
A29	359.6	363.4
A30	361.2	364.7
A31	362.3	366.0
A32	363.3	366.8
A33	368.1	371.8
A34	368.2	372.1
A35	368.3	372.2
A36	368.4	372.4
A37	368.7	372.6
A38	368.9	372.7
A39	369.0	372.7
A40	369.4	373.3
A41	369.5	373.1
A42	369.1	372.7
A43	369.6	373.2
A44	369.8	373.4
A45	370.3	373.8
A46	370.4	374.0
A47	370.9	374.5
A48	371.1	374.7
A49	371.6	375.8
A50	371.9	375.6
A51	372.9	376.8
A52	373.6	377.2
A53	373.8	377.4
A54	374.2	377.9
A55	374.4	377.9
A56	374.8	378.6
A57	375.0	378.6
A58	375.5	379.2
A59	375.6	379.3

• MIN C IS MINIMUM FLOOR ELEVATION OF UNIT THAT CAN BE SERVED BY PROPOSED SANITARY CONNECTION.

CONTRACT NO. 24-3521-D

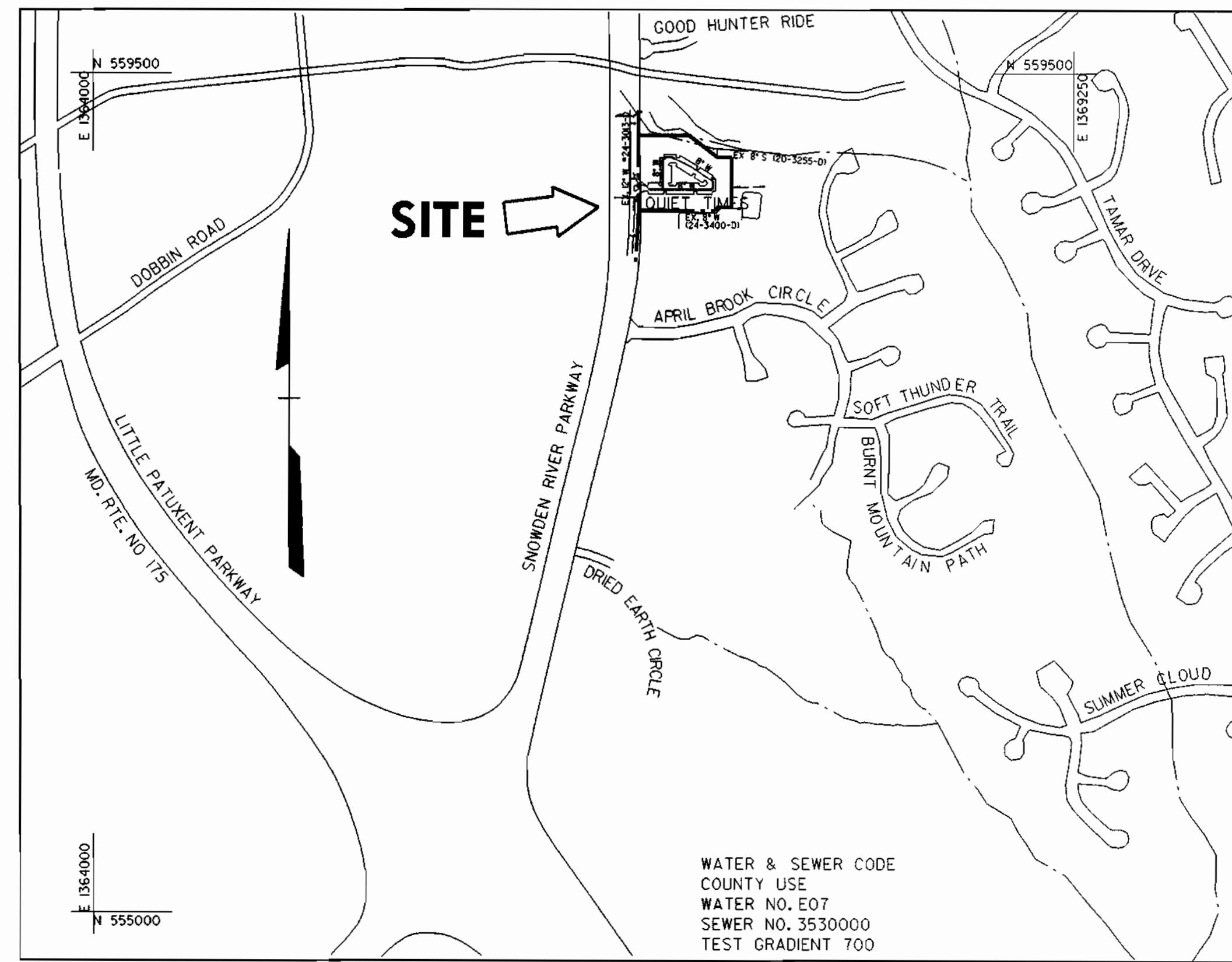
VILLAGE OF LONGREACH

SECTION 4, AREA 2, LOTS A1-A61

HOWARD COUNTY, MARYLAND

DEPARTMENT OF PUBLIC WORKS

- BENCHMARK**
DESCRIPTION
STATION 361A (CONCRETE MONUMENT)
N 55136.4431 E 136585.2470 (FOR HORIZONTAL CONTROL ONLY)
STATION IS LOCATED AT THE SOUTHEAST CORNER OF THE INTERSECTION OF SNOWDEN RIVER PARKWAY AND RTE. 175 5' FROM CURB AND 5.7' FROM GUARDRAIL END
- BENCHMARK**
DESCRIPTION
STATION 370R (1/4" REBAR)
N 557351.8360 E 1366688.3660 (FOR HORIZONTAL CONTROL ONLY)
STATION IS LOCATED 0.45+ MILES NORTH OF RTE. 175 AND 46'+ EAST OF THE EAST CURB OF SNOWDEN RIVER PARKWAY
- BENCHMARK**
DESCRIPTION
STATION 2643006 (CONCRETE MONUMENT)
ELEV. 437.46 (FOR VERTICAL CONTROL ONLY)
STATION IS LOCATED ON BG&E TRANSMISSION COLONIAL PIPELINE CO. 195-1390
192'+ N.E. OF DOBBIN RD.
- BENCHMARK**
DESCRIPTION
STATION 2542001 (CONCRETE MONUMENT)
ELEV. 426.9711 (FOR VERTICAL CONTROL ONLY)
STATION IS LOCATED ON ROSE TRANSMISSION LINES 1060'+ S.W. OF DOBBIN ROAD



VICINITY MAP

SCALE: 1" = 600'

GENERAL NOTES

- PART I
- APPROXIMATE LOCATION OF EXISTING MAINS ARE SHOWN. THE CONTRACTOR SHALL TAKE ALL NECESSARY PRECAUTIONS TO PROTECT EXISTING MAINS AND SERVICES AND MAINTAIN UNINTERRUPTED SUPPLY. ANY DAMAGE INCURRED SHALL BE REPAIRED IMMEDIATELY TO THE SATISFACTION OF THE ENGINEER AT THE CONTRACTOR'S EXPENSE.
 - ALL HORIZONTAL CONTROLS ARE BASED ON MARYLAND STATE COORDINATES (NORTH AMERICAN DATUM OF 1983 INAD 83).
 - ALL VERTICAL CONTROLS ARE BASED ON U.S.G.S. DATA.
 - ALL PIPE ELEVATIONS SHOWN ARE INVERT ELEVATIONS.
 - CLEAR ALL UTILITIES BY A MINIMUM OF 6'. CLEAR ALL POLES BY 2' - 0" MINIMUM OR TUNNEL AS REQUIRED. THE OWNER HAS CONTACTED THE UTILITY COMPANIES AND HAS MADE ARRANGEMENTS FOR BRACING OF POLES AS SHOWN ON THE DRAWINGS. IN THE EVENT THE CONTRACTOR'S WORK REQUIRES THE BRACING OF ADDITIONAL POLES, ANY COST INCURRED BY THE OWNER FOR BRACING OF ADDITIONAL POLES OR DAMAGES SHALL BE DEDUCTED FROM MONEY OWED THE CONTRACTOR. THE CONTRACTOR SHALL COORDINATE WITH THE UTILITY COMPANIES TO SCHEDULE THE BRACING OF THE POLES.
 - FOR DETAILS NOT SHOWN ON THE DRAWINGS AND FOR MATERIALS AND CONSTRUCTION METHODS USE HOWARD COUNTY DESIGN MANUAL, VOLUME IV, STANDARD SPECIFICATIONS AND DETAIL FOR CONSTRUCTION (LATEST EDITION). THE CONTRACTOR SHALL HAVE A COPY OF VOLUME IV ON THE JOB.
 - WHERE TEST PITS HAVE BEEN MADE ON EXISTING UTILITIES, THEY ARE NOTED BY THE SYMBOL AT THE LOCATION OF THE TEST PIT. A NOTE OR NOTES CONTAINING THE RESULTS OF THE TEST PIT OR PITS IS INCLUDED ON THE DRAWINGS. EXISTING UTILITIES IN THE VICINITY OF THE PROPOSED WORK FOR WHICH TEST PITS HAVE NOT BEEN DUG SHALL BE LOCATED BY THE CONTRACTOR TWO WEEKS IN ADVANCE OF CONSTRUCTION OPERATIONS AT HIS OWN EXPENSE.
 - CONTRACTOR SHALL NOTIFY THE FOLLOWING UTILITY COMPANIES OR AGENCIES AT LEAST FIVE WORKING DAYS BEFORE STARTING WORK SHOWN ON THESE PLANS:

STATE HIGHWAY ADMINISTRATION	531-5533
BG&E CO. CONTRACTOR SERVICES	850-4620
BG&E CO. UNDER GROUND DAMAGE CONTROL	787-9068
MISS. UTILITY	1-800-257-7777
1-800-257-7777	1-800-257-7777
COLONIAL PIPELINE CO.	795-1390
795-1390	795-1390
HOWARD COUNTY DEPARTMENT OF PUBLIC WORKS	
BUREAU OF UTILITIES	313-4900

- TREES AND SHRUBS ARE TO BE PROTECTED FROM DAMAGE TO MAXIMUM EXTENT. TREES AND SHRUBS LOCATED WITHIN THE CONSTRUCTION STRIP ARE NOT TO BE REMOVED OR DAMAGED BY THE CONTRACTOR.
- CONTRACTOR SHALL REMOVE TREES, STUMPS, AND ROOTS ALONG LINE OF EXCAVATION. PAYMENT FOR SUCH REMOVAL SHALL BE INCLUDED IN THE UNIT PRICE BID FOR CONSTRUCTION OF THE MAIN.
- THE CONTRACTOR SHALL NOTIFY THE BUREAU OF HIGHWAYS, HOWARD COUNTY, AT (410) 313-2450 AT LEAST FIVE WORKING DAYS BEFORE ANY OPEN CUT OF ANY COUNTY ROAD OR BORING/JACKING OPERATION IN COUNTY ROADS FOR LAYING WATER/SEWER MAINS OR HOUSE CONNECTIONS. THE APPROVAL OF THESE DRAWINGS WILL CONSTITUTE COMPLIANCE WITH DPW REQUIREMENTS PER SECTION 18.14(A) OF THE HOWARD COUNTY CODE.

PART II - WATER

- ALL WATER MAINS TO BE D.I.P. CLASS 52 UNLESS OTHERWISE NOTED.
- TOPS OF ALL WATER MAINS TO HAVE A MINIMUM OF 3-1/2' COVER UNLESS OTHERWISE NOTED.
- VALVES ADJACENT TO TEES SHALL BE STRAPPED TO TEES.
- ALL FITTINGS SHALL BE BUTTRESSED OR ANCHORED WITH CONCRETE IN ACCORDANCE WITH THE STANDARD DETAILS UNLESS OTHERWISE PROVIDED FOR ON THE DRAWINGS.
- FIRE HYDRANTS SHALL BE SET TO THE BURY LINE ELEVATIONS SHOWN ON THE DRAWINGS. ALL FIRE HYDRANTS SHALL BE RESTRAINED AND BUTTRESSED WITH CONCRETE IN ACCORDANCE WITH STANDARD DETAILS. SOIL AROUND THE FIRE HYDRANT SHALL BE COMPACTED IN ACCORDANCE WITH SECTION 1000 AND 1005 OF THE STANDARD SPECIFICATIONS.
- THE CONTRACTOR SHALL NOT OPERATE ANY WATER MAIN VALVES ON THE EXISTING WATER SYSTEM.
- ALL WATER HOUSE CONNECTIONS SHALL BE FOR INSIDE METER SETTING UNLESS OTHERWISE NOTED ON PLANS OR IN SPECIFICATIONS.
- SPRINKLER SYSTEM FOR ALL TOWNHOMES OR MULTI-FAMILY DWELLING UNITS SHOULD HAVE A MINIMUM OF 1" CONNECTION WITH A 3/4" METER. TWIN HOUSE CONNECTIONS WILL BE 1/2" FROM MAIN TO "Y" FITTING.

PART III - SEWER

- ALL SEWER MAINS SHALL BE DIP AND P.V.C. UNLESS OTHERWISE NOTED.
- ALL MANHOLES SHALL BE 4' - 0" INSIDE DIAMETER UNLESS OTHERWISE NOTED.
- FORCE MAINS SHALL BE D.I.P. ONLY.
- MANHOLES SHOWN WITH 12" AND 16" WALLS ARE FOR BRICK MANHOLES ONLY.
- MANHOLES DESIGNATED W.T. IN PLAN AND PROFILE SHALL HAVE WATER TIGHT FRAME AND COVERS, STANDARD DETAIL 05.52, WHERE WATER TIGHT MANHOLE FRAME AND COVER IS USED, SET TOP OF FRAME 1' - 6" ABOVE FINISHED GRADE UNLESS OTHERWISE NOTED ON THE DRAWINGS.
- HOUSE(S) WITH THE SYMBOL 'C.N.S.' INDICATES THAT CELLAR CANNOT BE SERVED.

ITEM	QUANTITIES ESTIMATED	QUANTITIES AS-BUILT		
		QUANTITIES	TYPE	MANUFACTURER/SUPPLIER
8" W.	928	841	D.I.P.	U.S. STEEL
6" W.	25	21	D.I.P.	U.S. STEEL
8" S.	1037	1027	P.V.C.	E.T.I.
4" SHC	691	1,055	P.V.C.	E.T.I.
1/2" WHC	768	507	TYPE K	CAMBRIDGE-LEE
1" WHC	489	507	TYPE K	CAMBRIDGE-LEE
FIRE HYDRANT	2	2	A 423	MUELLER CO.
4" DIA. MH	10	10	MHR 700	COLIWIN MACHINE CO.
8" VALVES	3	3	GRATE	MUELLER CO.
6" VALVES	2	2	GRATE	MUELLER CO.

NAME OF UTILITY CONTRACTOR: ROJIKI CONST.
SURVEY AND DRAFTING DIVISION AS-BUILT DATE: 8-12-98

TYPE OF BUILDING:	TOWNHOUSE
NO. OF LOTS / PARCELS:	61
NO. OF WATER HOUSE CONNECTIONS:	59
NO. OF SEWER HOUSE CONNECTIONS:	59
DRAINAGE AREA:	DORSEY RUN
TREATMENT PLANT:	LITTLE PATUXENT WATER QUALITY MANAGEMENT CENTER, SAVAGE, HOWARD COUNTY

REVIEWED FOR HOWARD SOIL CONSERVATION DISTRICT AND MEETS TECHNICAL REQUIREMENT

John P. Blunt 9/27/96
SIGNATURE DATE

THIS DEVELOPMENT PLAN IS APPROVED FOR SOIL EROSION AND SEDIMENT CONTROL BY THE HOWARD COUNTY CONSERVATION DISTRICT.

APPROVED: *J. M. Warfield* 9/27/96
HOWARD COUNTY DATE

SEDIMENT CONTROL MEASURES WILL BE IMPLEMENTED IN ACCORDANCE WITH SECTION 219 OF THE SPECIFICATIONS AND WITH ROAD CONSTRUCTION PLANS F-96-86.

DEPARTMENT OF PUBLIC WORKS
HOWARD COUNTY, MARYLAND

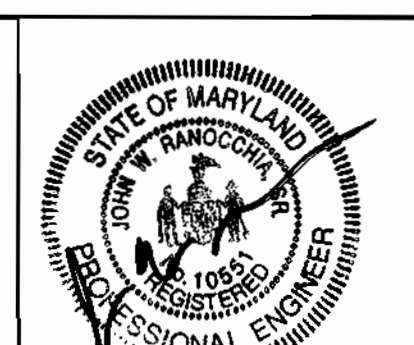
Robert M. Berman 9-23-96
CHIEF - BUREAU OF UTILITIES - DATE

DEPARTMENT OF PLANNING & ZONING
HOWARD COUNTY, MARYLAND

John J. ... 10/26/96
CHIEF - DEVELOPMENT ENGINEERING DIVISION - DATE

DMW
Daft · McCune · Walker, Inc.

A Team of Land Planners, 200 East Pennsylvania Avenue
Landscape Architects, Towson, Maryland 21286
Engineers, Surveyors & Environmental Professionals
410 296 3333
Fax 296 4705



DESIGN BY: CEV
DRAWN BY: CEV
CHECKED BY: JWR
DATE: APR 96

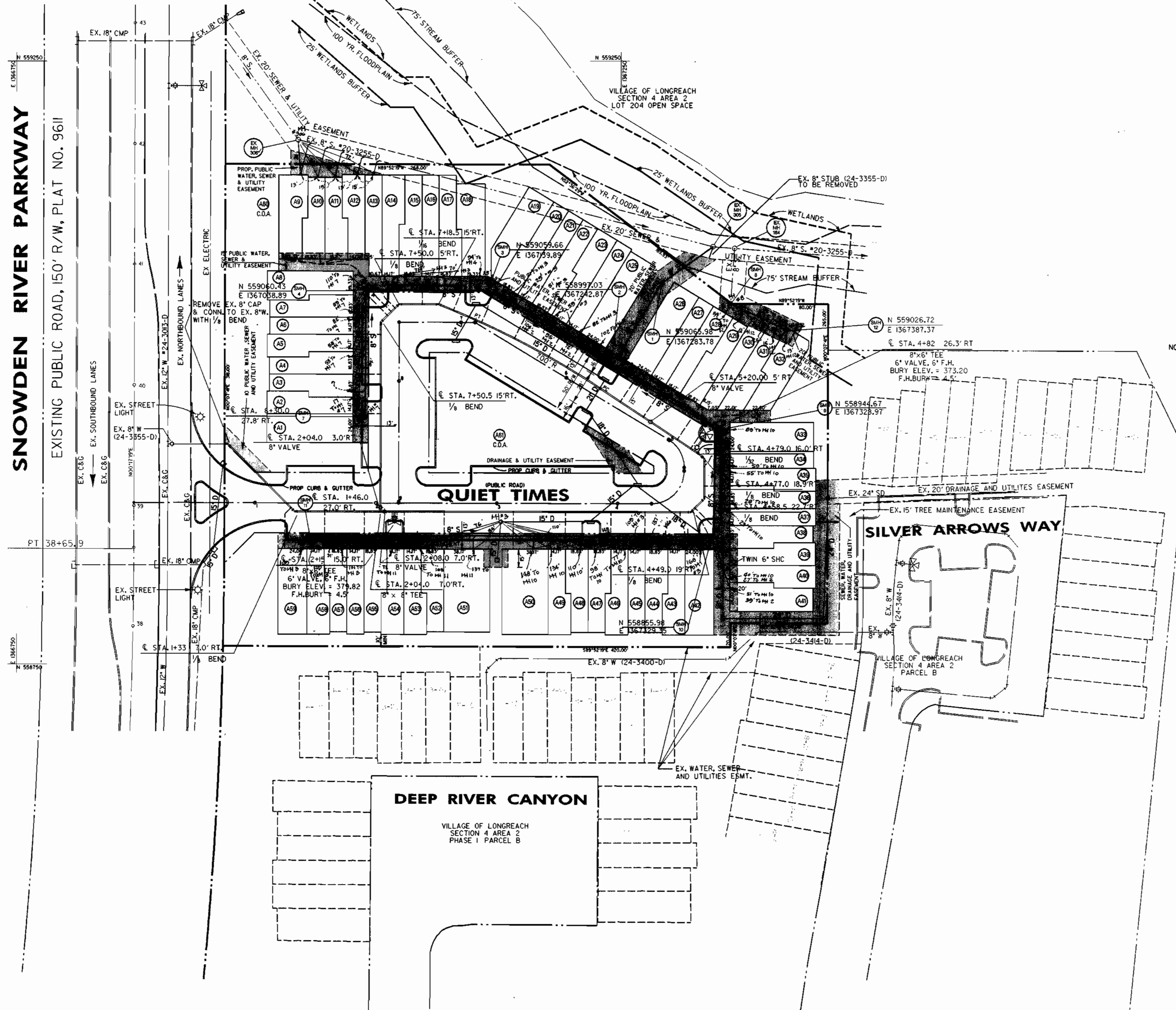
KCI 2 AS-BUILT CONDITIONS ADDED TO PLAN 10/2/98 (SHEET 2A)

BY NO. REVISION DATE 600 SCALE MAP NO. 37 BLOCK NO. 7

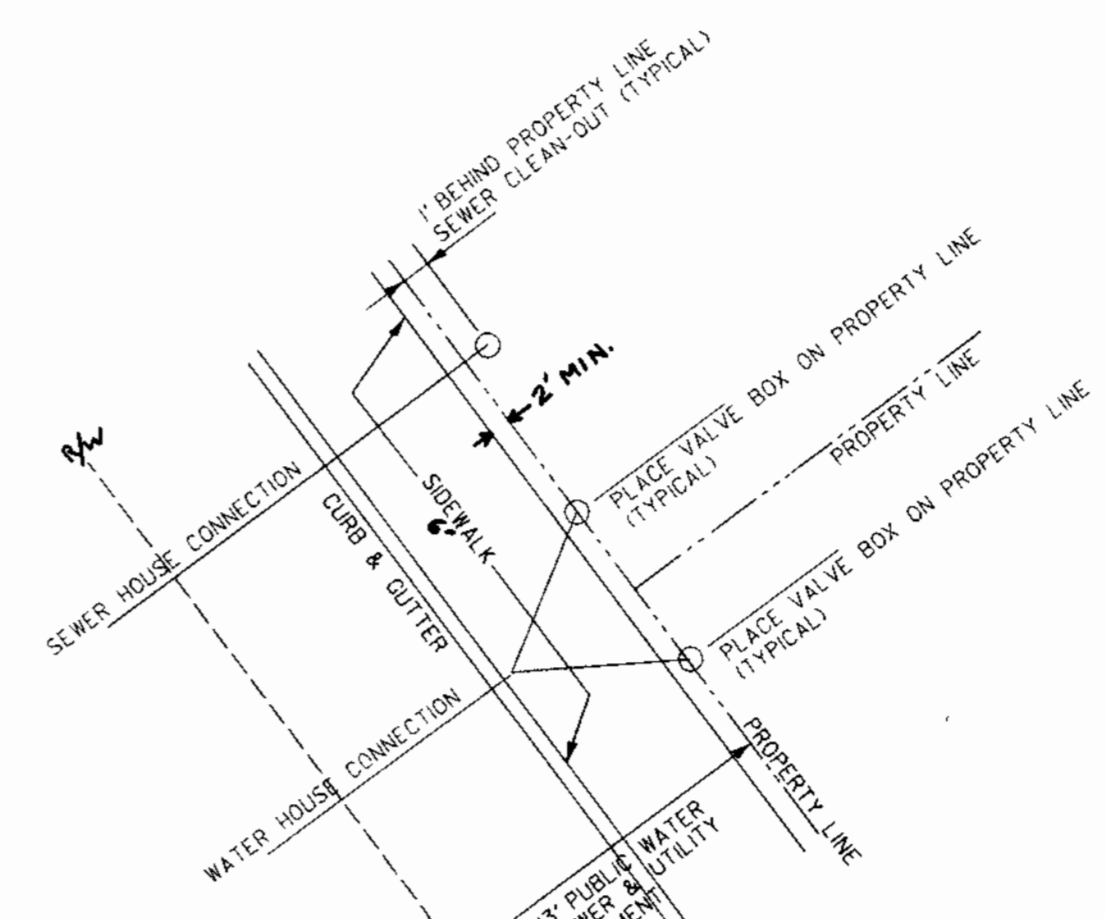
TITLE SHEET

VILLAGE OF LONGREACH
SECTION 4 AREA 2
LOTS A1-A61
6th ELECTION DISTRICT
CONTRACT NO. 24-3521-D

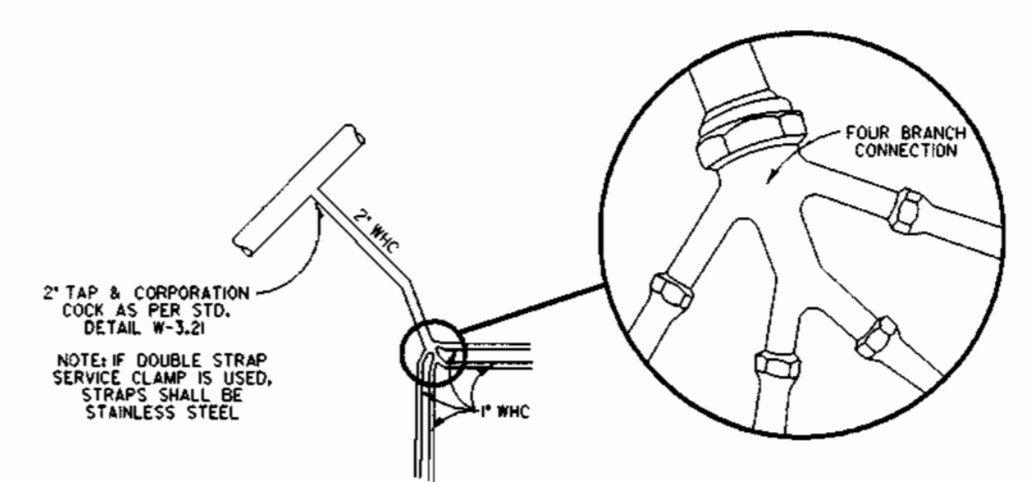
SCALE AS SHOWN
SHEET 1 OF 3



NOTE: SINGLE WATER HOUSE CONNECTIONS TO BE 1" MIN. WITH 3/4" METER THIN WATER HOUSE CONNECTIONS TO BE 1/2" FROM MAIN TO 1/2" FITTING



TYPICAL SERVICE CONNECTION LOCATION DETAIL
NOT TO SCALE



3 & 4 - WAY WHC DETAIL
NO SCALE
LOTS A8 THRU A12 & A39 THRU A41

Wed Sep 11 10:11:31 1996 d:\pwork\94004.dwg

DEPARTMENT OF PUBLIC WORKS
HOWARD COUNTY, MARYLAND

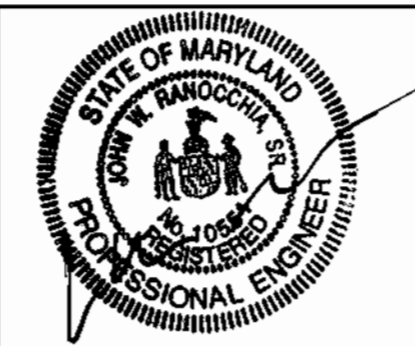
Robert B. Berman 9-23-96
CHIEF - BUREAU OF UTILITIES - DATE

DEPARTMENT OF PLANNING & ZONING
HOWARD COUNTY, MARYLAND

John J. ...
CHIEF - DEVELOPMENT ENGINEERING DIVISION - DATE

DMW
Daft · McCune · Walker, Inc.

A Team of Land Planners, 200 East Pennsylvania Avenue
Landscape Architects, Towson, Maryland 21286
Engineers, Surveyors & Environmental Professionals 410 296 3333
Fax 296 4705



DESIGN BY:	CVARTP				
DRAWN BY:	CVARTP				
CHECKED BY:	JWR				
DATE:	K.O.I. 1	SEWER ASBUILT CONDITIONS ADDED TO PLAN		8/98	
APR 96	BY NO.	REVISION	DATE	600 SCALE MAP NO.	37
				BLOCK NO.	7

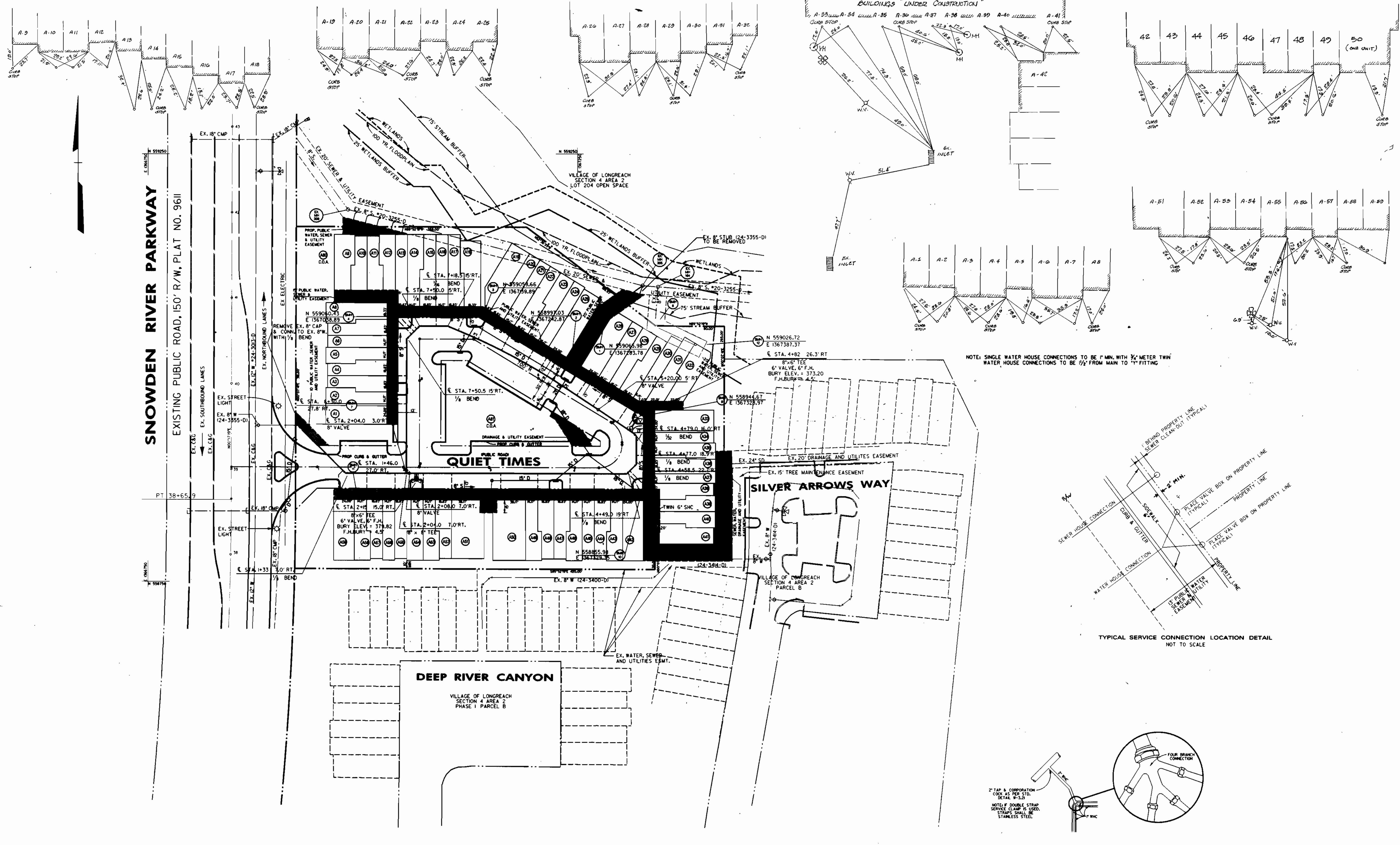
"SEWER" ASBUILT ONLY
WATER & SEWER PLANS

VILLAGE OF LONGREACH
SECTION 4 AREA 2
LOTS A1-A61
6th ELECTION DISTRICT

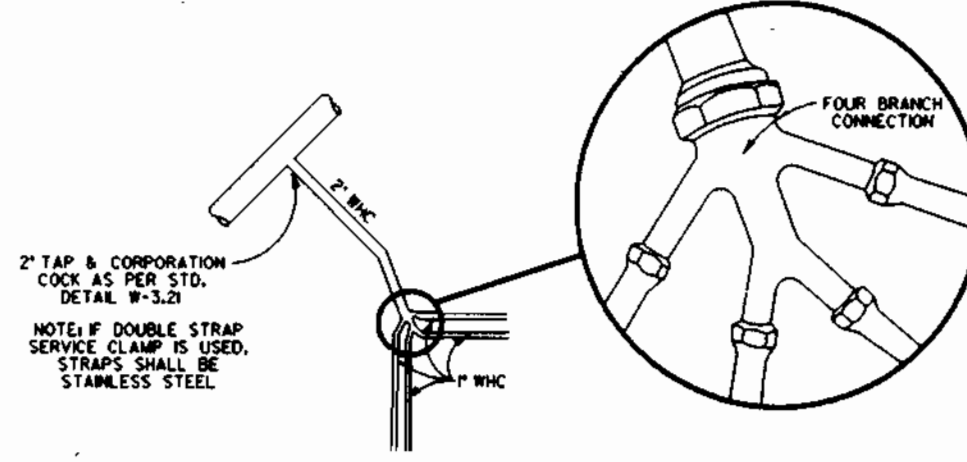
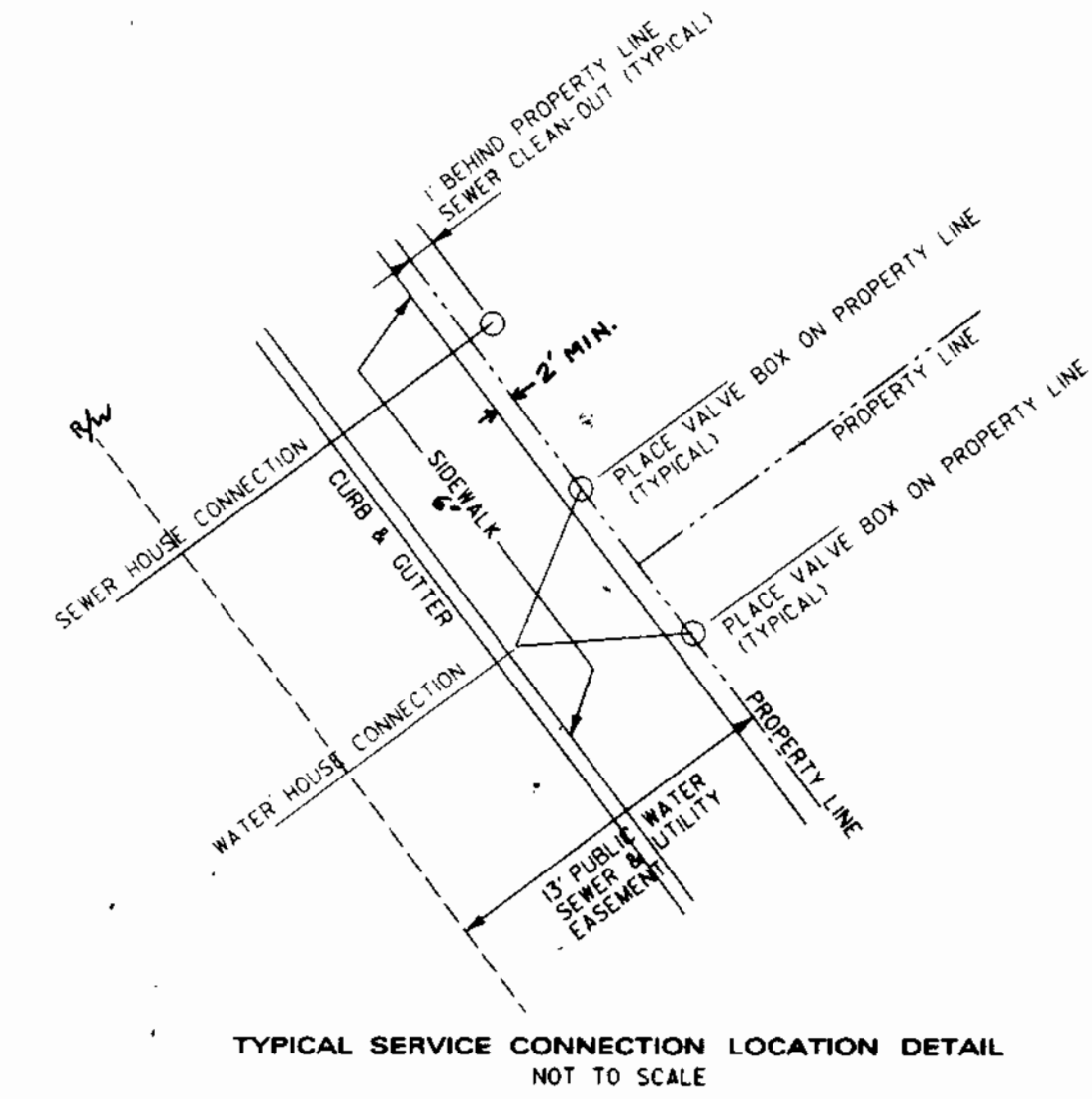
SCALE
1" = 50'

SHEET
2 OF 3

CONTRACT NO. 24-3521-D



NOTE: SINGLE WATER HOUSE CONNECTIONS TO BE 1" MIN. WITH 1/2" METER TWIN WATER HOUSE CONNECTIONS TO BE 1/2" FROM MAIN TO 1" FITTING



DEPARTMENT OF PUBLIC WORKS
HOWARD COUNTY, MARYLAND

Robert W. Bannister 9-23-96
CHIEF - BUREAU OF UTILITIES - DATE

DEPARTMENT OF PLANNING & ZONING
HOWARD COUNTY, MARYLAND

Michael J. ... 10/26/96
CHIEF - DEVELOPMENT ENGINEERING DIVISION - DATE

DMW
Daft · McCune · Walker, Inc.

A Team of Land Planners, 200 East Pennsylvania Avenue
Landscape Architects, Towson, Maryland 21286
Engineers, Surveyors & Environmental Professionals 410 296 3333
Fax 296 4705

DESIGN BY:	CVA/TP		
DRAWN BY:	CVA/TP		
CHECKED BY:	KCI	2	ASBUILT CONDITIONS ADDED TO PLAN
DATE:	JWR		10/12/96
	KCI	1	ASBUILT CONDITIONS ADDED TO PLAN
			2/96
APR 96	BY NO.	REVISION	DATE

"WATER ASBUILT ONLY"
WATER & SEWER PLANS

600 SCALE MAP NO. 37 BLOCK NO. 7

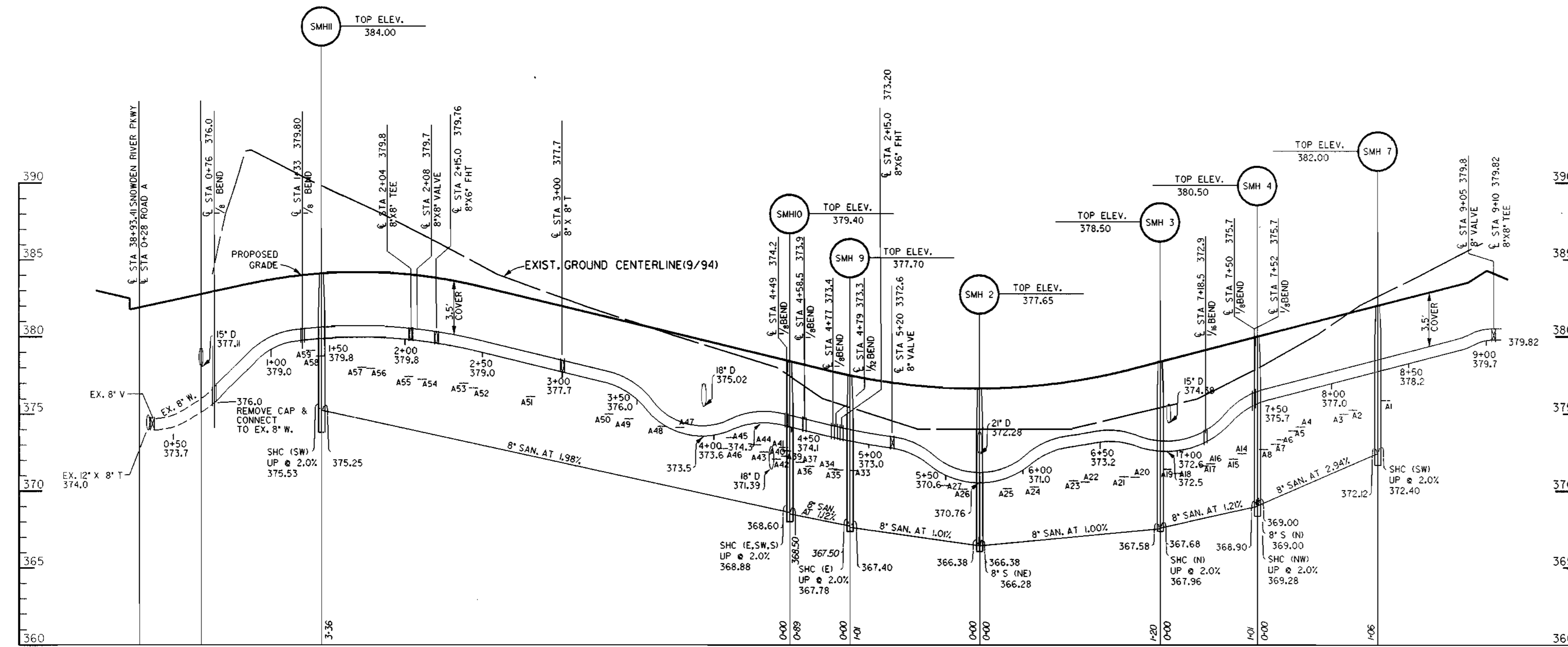
VILLAGE OF LONGREACH
SECTION 4 AREA 2
LOTS A1-A61
8th ELECTION DISTRICT

SCALE 1"=50'
SHEET 2 OF 3

CONTRACT NO. 24-3521-D

Mod. Sep. 17, 1996. 11/10/13/1 1996. 4/13/2004/10004/1

Sewer House Connection Stations



From SMH 10 to SMH 11

Station Lot Number

0+10	A42
0+36	A43
0+43	A44
0+68	A45
0+72	A46
0+98	A47
1+11	A48
1+35	A49
1+50	A50
2+00	A51
2+35	A52
2+43	A53
2+66	A54
2+75	A55
3+00	A56
3+07	A57
3+36	A58
3+36	A59

From SMH9 to SMH10

Station Lot Number

0+00	A33
0+30	A34
0+34	A35
0+62	A36
0+68	A37
0+89	A38
0+89	A39
0+89	A40
0+89	A41

From SMH2 to SMH 9

Station Lot Number

0+13	A26
0+33	A27

From SMH8 to SMH 12

Station Lot Number

0+00	A28
0+12	A29
0+30	A30
0+43	A31
0+52	A32

From SMH2 to SMH 3

Station Lot Number

1+20	A19
1+02	A20
0+93	A21
0+69	A22
0+62	A23
0+38	A24
0+18	A25

From SMH3 to SMH4

Station Lot Number

0+76	A14
0+68	A15
0+42	A16
0+36	A17
0+06	A18

From Ex. SMH 305 to Ex. SMH 306

Station Lot Number

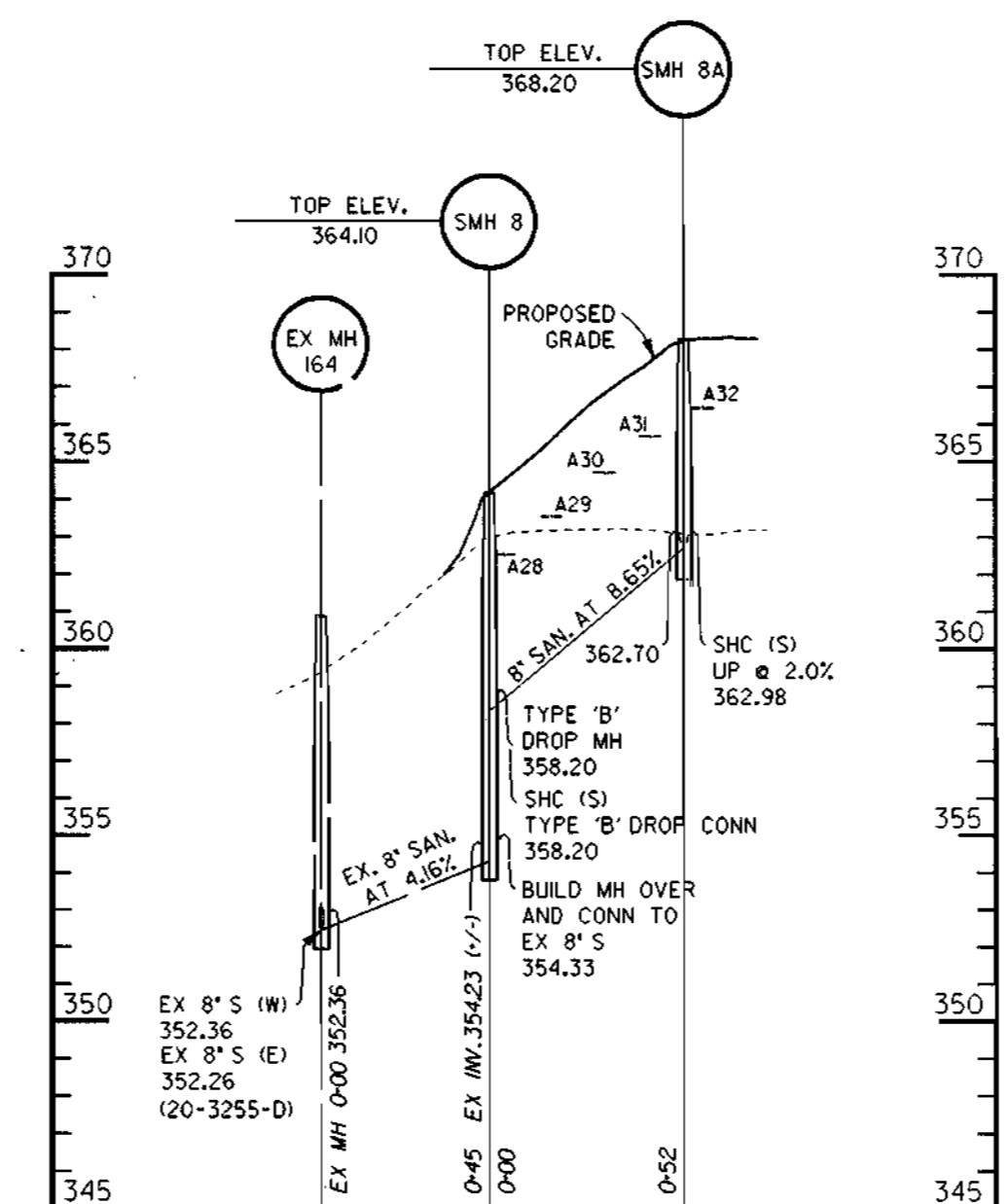
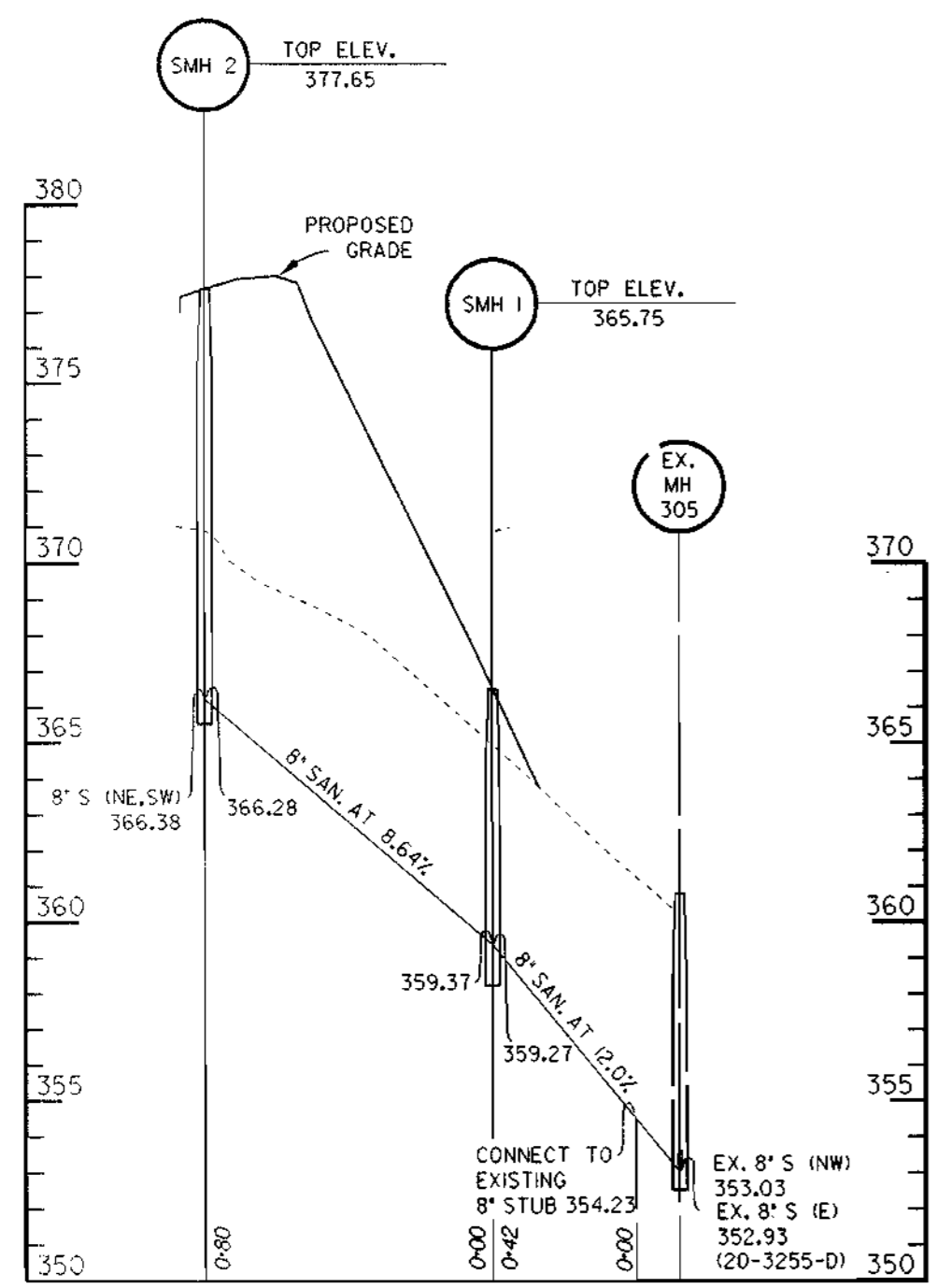
3+46	A9
3+30	A10
3+16	A11
2+99	A12
2+87	A13

From SMH 4 to SMH 7

Station Lot Number

1+06	A1
0+90	A2
0+84	A3
0+54	A4
0+48	A5
0+24	A6
0+17	A7
0+00	A8

• CONNECTS TO MH
•• TWIN 6" SHC



PROFILE SCALE
HORIZONTAL 1" = 50'
VERTICAL 1" = 5'

TUE JUL 9 14:22:16 1996 d:\VANDU\MANMAP.PLT

DEPARTMENT OF PUBLIC WORKS HOWARD COUNTY, MARYLAND <i>Robert B. ...</i> 9-23-96 CHIEF - BUREAU OF UTILITIES - DATE	DEPARTMENT OF PLANNING & ZONING HOWARD COUNTY, MARYLAND <i>...</i> 10/2/96 CHIEF - DEVELOPMENT ENGINEERING DIVISION - DATE
---	---

DMW
 Daft · McCune · Walker, Inc.
 A Team of Land Planners, 200 East Pennsylvania Avenue
 Landscape Architects, Towson, Maryland 21286
 Engineers, Surveyors & Environmental Professionals 410 296 3333
 Fax 296 4705



DESIGN BY:	RTP			
DRAWN BY:	RTP			
CHECKED BY:	JWR			
DATE:	DEC 1995	BY NO.		REVISION

WATER & SEWER PLANS

600 SCALE MAP NO. 37 BLOCK NO. 7

VILLAGE OF LONGREACH
 SECTION 4 AREA 2
 LOTS A1-A61
 6TH ELECTION DISTRICT
 CONTRACT NO. 34-3521-D

SCALE AS SHOWN
 SHEET 3 OF 3