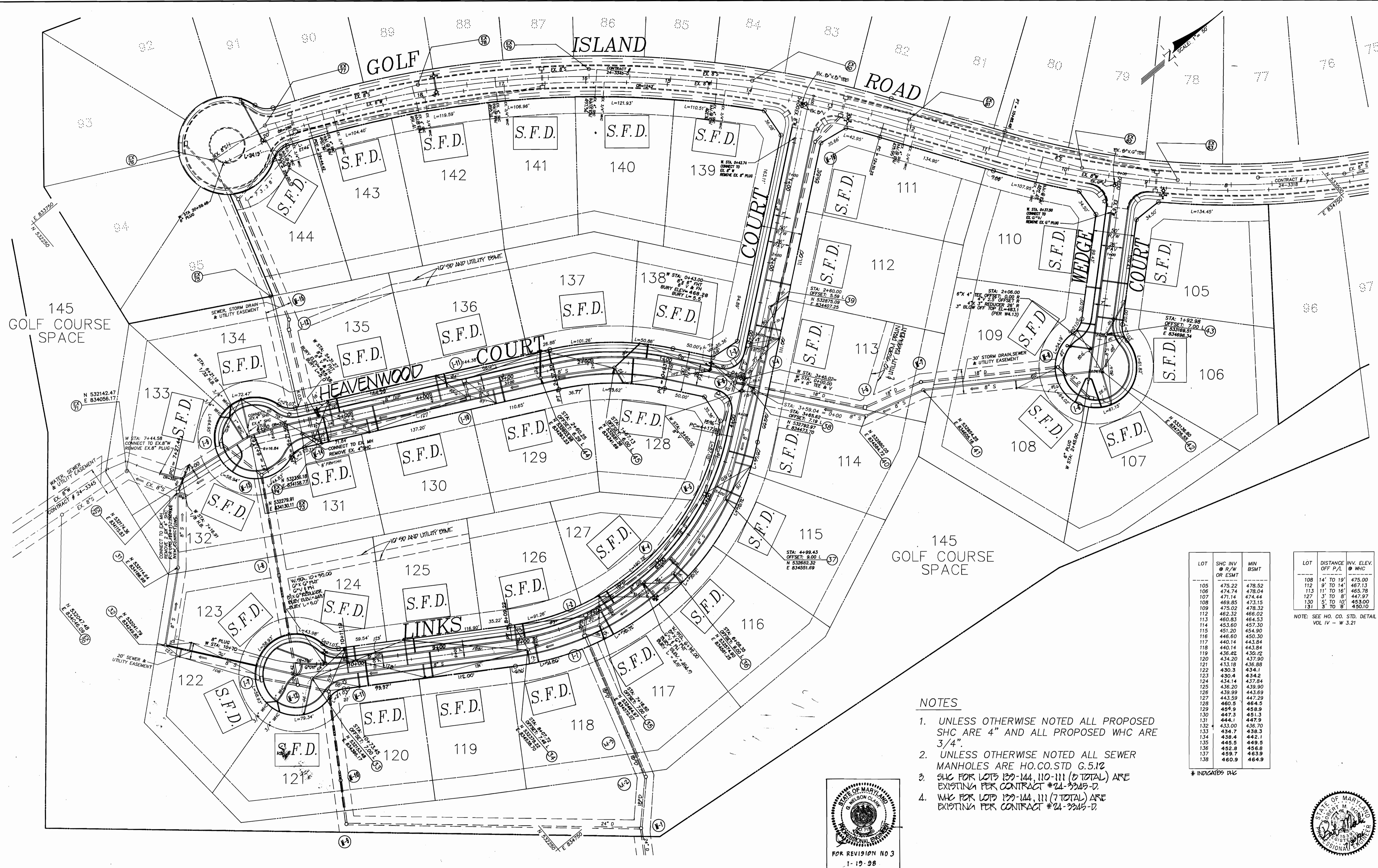


RESUB.

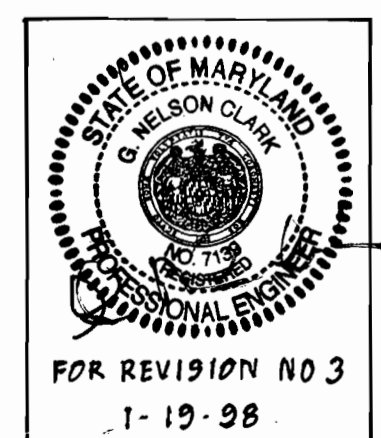


LOT	SHC INV @ R/W OR ESMT	MIN BSMT
105	475.22	478.52
106	474.74	478.04
107	471.14	474.44
108	469.85	473.15
109	475.02	478.32
112	462.32	466.02
113	460.83	464.53
114	453.60	457.30
115	451.20	454.90
116	446.60	450.30
117	440.14	443.84
118	440.14	443.84
119	436.42	439.12
120	434.20	437.90
121	433.18	436.88
122	430.3	434.1
123	430.4	434.2
124	434.14	437.84
125	436.20	439.90
126	439.99	443.69
127	443.59	447.29
128	460.5	464.5
129	454.9	458.9
130	447.3	451.3
131	444.1	447.9
132	433.00	436.70
133	434.7	438.3
134	438.4	442.1
135	445.5	449.5
136	452.8	456.8
137	459.7	463.9
138	460.9	464.9

LOT	DISTANCE OFF P/L	INV. ELEV. @ WHC
108	14' TO 19'	475.00
112	9' TO 14'	467.13
107	1' TO 8'	465.78
130	5' TO 10'	453.00
131	3' TO 8'	450.10

NOTE: SEE HO. CO. STD. DETAIL VOL IV - W 3.21

- NOTES**
- UNLESS OTHERWISE NOTED ALL PROPOSED SHC ARE 4" AND ALL PROPOSED WHC ARE 3/4".
  - UNLESS OTHERWISE NOTED ALL SEWER MANHOLES ARE HO.CO.STD G.5.12
  - SHC FOR LOTS 122-144, 110-111 (2 TOTAL) ARE EXISTING PER CONTRACT #24-3345-D.
  - WHC FOR LOTS 122-144, 111 (7 TOTAL) ARE EXISTING PER CONTRACT #24-3345-D.



DEPARTMENT OF PUBLIC WORKS  
HOWARD COUNTY, MARYLAND  
R. J. B... 8-5-96  
DATE

DEPARTMENT OF PLANNING & ZONING  
HOWARD COUNTY, MARYLAND  
M. J. ... 8/1/96  
DATE

R.M. MOCHI GROUP, P.C.  
3300 N. Ridge Road, Suite 235  
Ellicott City, MD 21043-3350  
(410) 461-0079  
Fax: (410) 750-6340

DES.	CHK.	PROJ.	DATE	BY	NO.	REVISION	DATE
MWZ/MAS	MWZ/MAS	94023-20	3/22/96				
K.O.I.	C.F.S.					AS-BUILT CONDITIONS ADDED TO PLAN - "SEWER"	5/98
						Revised location of S.H.C. to Lots 122, 123 and 124. Revised FH's of Lots 122, 123 and 124 and SHC INV. & MIN. BSMT.	1-19-98
						REVISED PER REAL ESTATE SERVICES COMMENTS	12/24/96
						SUBMITTED ORIGINALS TO DPZ/DED FOR QUANTITIES	7/10/96
						SUBMITTED TO DPZ/DED FOR REVIEW	3/16/96

WATER AND SEWER MAIN  
EXTENSION PLAN  
AS-BUILT - "SEWER ONLY"

TURF VALLEY VISTAS RESUBDIVISION  
PGCC DISTRICT, RESIDENTIAL SUBDISTRICT  
PHASE III - LOTS 105-145  
CONTRACT NO. 24-3511-D  
2ND ELECTION DISTRICT  
HOWARD COUNTY, MARYLAND

SCALE AS SHOWN  
SHEET 2 OF 4

4: 94023-00 94023-20 94023W52