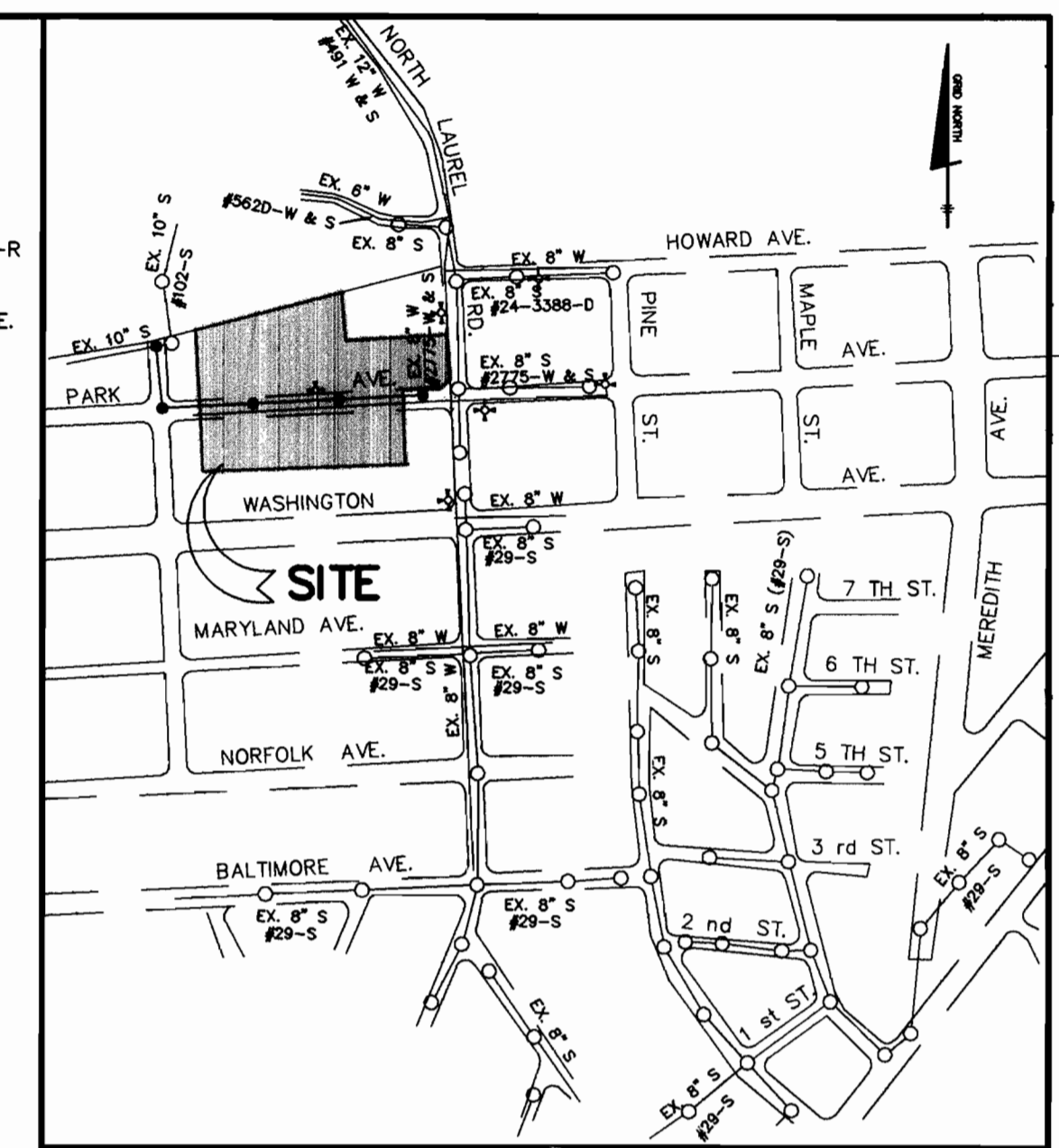


WHISKEY BOTTOM APARTMENTS
SECTION 2, AREA 2
P.B. 25, F.93

BENCH MARK DATA
HOWARD COUNTY MON. #1741003
CONC. MON. ON WEST SIDE
OF RTE. 216 AND 0.2' BELOW
SURFACE. ELEV.=198.395
HOWARD COUNTY MON. #1741002-R
CONC. MON. ON TOP OF BANK
EAST OF EAST EDGE MAC. OF
RTE. 216 FLUSH WITH SURFACE.
ELEV.=197.368



VICINITY MAP
SCALE: 1" = 600'

WATER AND SEWER COUNTY CODE	TYPE OF BUILDING :
WATER CODE: 605	NUMBER OF LOTS : 30
SEWER CODE: 7141500	NUMBER OF SHC'S : 30
TEST GRADIENT: .550	NUMBER OF W.H.C.'S : 30
	NUMBER OF PATUXENT : 1
	TREATMENT PLANT: LITTLE PATUXENT



CONTRACTOR SHALL TEST PIT TO VERIFY EXACT LOCATION & INVERT ELEVATION PRIOR TO CONSTRUCTION

CONTRACTOR SHALL TEST PIT TO VERIFY EXACT LOCATION & INVERT ELEVATION PRIOR TO CONSTRUCTION

- GENERAL NOTES**
- APPROXIMATE LOCATION OF EXISTING MAINS ARE SHOWN. THE CONTRACTOR SHALL TAKE ALL NECESSARY PRECAUTIONS TO PROTECT EXISTING MAINS AND SERVICES AND MAINTAIN UNINTERRUPTED SUPPLY. ANY DAMAGE INCURRED SHALL BE REPAIRED IMMEDIATELY TO THE SATISFACTION OF THE ENGINEER AT THE CONTRACTOR'S EXPENSE.
 - ALL HORIZONTAL CONTROLS ARE BASED ON MARYLAND STATE COORDINATES (NAD 27).
 - ALL VERTICAL CONTROLS ARE BASED ON U.S.G.S. DATA.
 - ALL PIPE ELEVATIONS SHOWN ARE INVERT ELEVATIONS.
 - CLEAR ALL UTILITIES BY A MINIMUM OF 6". CLEAR ALL POLES BY 2'-0" MINIMUM OR TUNNEL AS REQUIRED. THE OWNER HAS CONTACTED THE UTILITY COMPANIES AND HAS MADE ARRANGEMENTS FOR BRACING OF POLES AS SHOWN ON THE DRAWINGS. IN THE EVENT THE CONTRACTOR'S WORK REQUIRES THE BRACING OF ADDITIONAL POLES, ANY COST INCURRED BY THE OWNER FOR THE BRACING OF ADDITIONAL POLES OR DAMAGES SHALL BE DEDUCTED FROM MONEY OWED THE CONTRACTOR. THE CONTRACTOR SHALL COORDINATE WITH THE UTILITY COMPANIES TO SCHEDULE THE BRACING OF THE POLES.
 - FOR DETAILS NOT SHOWN ON THE DRAWINGS, AND FOR MATERIALS AND CONSTRUCTION METHODS, USE HOWARD COUNTY DESIGN MANUAL VOLUME IV, STANDARD SPECIFICATIONS AND DETAILS FOR CONSTRUCTION. THE CONTRACTOR SHALL HAVE A COPY OF VOLUME IV ON THE JOB.
 - WHERE TEST PITS HAVE BEEN MADE ON EXISTING UTILITIES, THEY ARE NOTED BY THE SYMBOL Φ AT THE LOCATION OF THE TEST PIT. A NOTE OR NOTES CONTAINING THE RESULTS OF THE TEST PIT OR PITS IS INCLUDED ON THE DRAWINGS. EXISTING UTILITIES IN THE VICINITY OF THE PROPOSED WORK FOR WHICH TEST PITS HAVE NOT BEEN DUG SHALL BE LOCATED BY THE CONTRACTOR TWO WEEKS IN ADVANCE OF CONSTRUCTION OPERATIONS AT HIS OWN EXPENSE.
 - CONTRACTOR SHALL NOTIFY THE FOLLOWING UTILITY COMPANIES OR AGENCIES AT LEAST FIVE WORKING DAYS BEFORE STARTING WORK SHOWN ON THESE PLANS:
 - STATE HIGHWAY ADMINISTRATION.....531-5533
 - BALTIMORE GAS & ELECTRIC CO.....787-9068
 - CONTRACTOR SERVICES.....850-4620
 - BALTIMORE GAS & ELECTRIC CO.....787-9068
 - UNDERGROUND DAMAGE CONTROL.....1-800-257-7777
 - MISS UTILITY.....795-1390
 - COLONIAL PIPELINE CO.....795-1390
 - BUREAU OF UTILITIES.....313-4900
 - HOWARD CO. DEPT. OF PUBLIC WORKS.....313-4900
 - TREES AND SHRUBS ARE TO BE PROTECTED FROM DAMAGE TO MAXIMUM EXTENT. TREES AND SHRUBS LOCATED WITHIN THE CONSTRUCTION STRIP ARE NOT TO BE REMOVED OR DAMAGED BY THE CONTRACTOR.
 - CONTRACTOR SHALL REMOVE TREES, STUMPS AND ROOTS ALONG LINE OF EXCAVATION. PAYMENT FOR SUCH REMOVAL SHALL BE INCLUDED IN THE UNIT PRICE BID FOR CONSTRUCTION OF THE MAIN.
 - PLACE REGULATION "MEN WORKING" AND WARNING SIGNS AS REQUIRED TO COMPLY WITH MARYLAND STATE HIGHWAY ADMINISTRATION MANUAL OF TRAFFIC CONTROL FOR HIGHWAY MAINTENANCE OPERATIONS.
 - ALL WATER MAINS TO BE D.I.P. UNLESS OTHERWISE NOTED.
 - TOP OF ALL WATER MAINS TO HAVE A MINIMUM OF 3'-6" COVER UNLESS OTHERWISE NOTED.
 - VALVES ADJACENT TO TEES SHALL BE STRAPPED TO TEES.
 - THE CONTRACTOR SHALL NOTIFY THE BUREAU OF HIGHWAYS, HOWARD COUNTY, AT (410) 313-2450 AT LEAST FIVE WORKING DAYS BEFORE ANY OPEN CUT OF ANY COUNTY ROAD OR BORING/JACKING OPERATION IN COUNTY ROADS FOR LAYING WATER/SEWER MAINS OR HOUSE CONNECTIONS. THE APPROVAL OF THESE DRAWINGS WILL CONSTITUTE COMPLIANCE WITH DPM REQUIREMENTS PER SECTION 18.114 (g) OF THE HOWARD COUNTY CODE.

PLAN VIEW
SCALE: 1"=50'

NOTE: ALL DHC (SEWER DROP HOUSE CONNECTIONS) PER HOWARD CO. DESIGN MANUAL, VOLUME II-WATER AND SEWER, STANDARD DETAIL -APPENDIX 13.

FOR EROSION & SEDIMENT CONTROL PLAN SEE SDP-96-87

ITEM	QUANTITIES ESTIMATED	AS-BUILT		
		QUANTITIES	TYPE	MANUFACTURER/SUPPLIER
8" WATER	873 L.F.	873 L.F.	CL 82	A-1 PIPE, INC.
8" S.V.	48 L.F.	52 L.F.	CL 82	MUELLER CO. WATER PRO
8" VALVES	1 EA.	1 EA.	GATE	"
FIRE HYDRANTS	2 EA.	2 EA.	CENTURION	"
8" CAP	1 EA.	1 EA.	GAR	A-1 PIPE, INC.
3/4" MHC	600 L.F.	600 L.F.	"	MUELLER CO. WATER PRO
8" SEWER	1094 L.F.	1094 L.F.	"	CHAMBERLAIN UNIV. WATER PRO
MANHOLES	5 EA.	5 EA.	PRECAST CONCRETE	ATLANTIC CONCRETE
4" SHC	200 L.F.	140 L.F.	BAR 35	J-M WATER PRO
4" DHC	13 EA.	N/A		

NAME OF UTILITY CONTRACTOR: **GAINES & COMPANY**
SURVEY AND DRAFTING AS-BUILT DATE: _____

THIS PLAN IS APPROVED FOR SOIL EROSION AND SEDIMENT CONTROL BY THE HOWARD SOIL CONSERVATION DISTRICT.

John P. Blunt 6/14/96
HOWARD SOIL CONSERVATION DISTRICT DATE

HOWARD SOIL CONSERVATION DISTRICT:
REVIEWED FOR HOWARD SOIL CONSERVATION DISTRICT AND MEETS TECHNICAL REQUIREMENTS

OWNER/DEVELOPER
CORNERSTONE HOMES
6571 HUNTSVILLE DRIVE
ELK RIDGE, MARYLAND 21227
(410) 379-0157

Joseph W. Wainwright 6/14/96
NATURAL RESOURCES CONSERVATION SERVICE DATE

DEPARTMENT OF PUBLIC WORKS
HOWARD COUNTY, MARYLAND
R. L. ... 6-5-96
CHIEF, BUREAU OF UTILITIES DATE

DEPARTMENT OF PLANNING & ZONING
HOWARD COUNTY, MARYLAND
... 6/14/96
CHIEF, DEVELOPMENT ENGINEERING DIVISION DATE

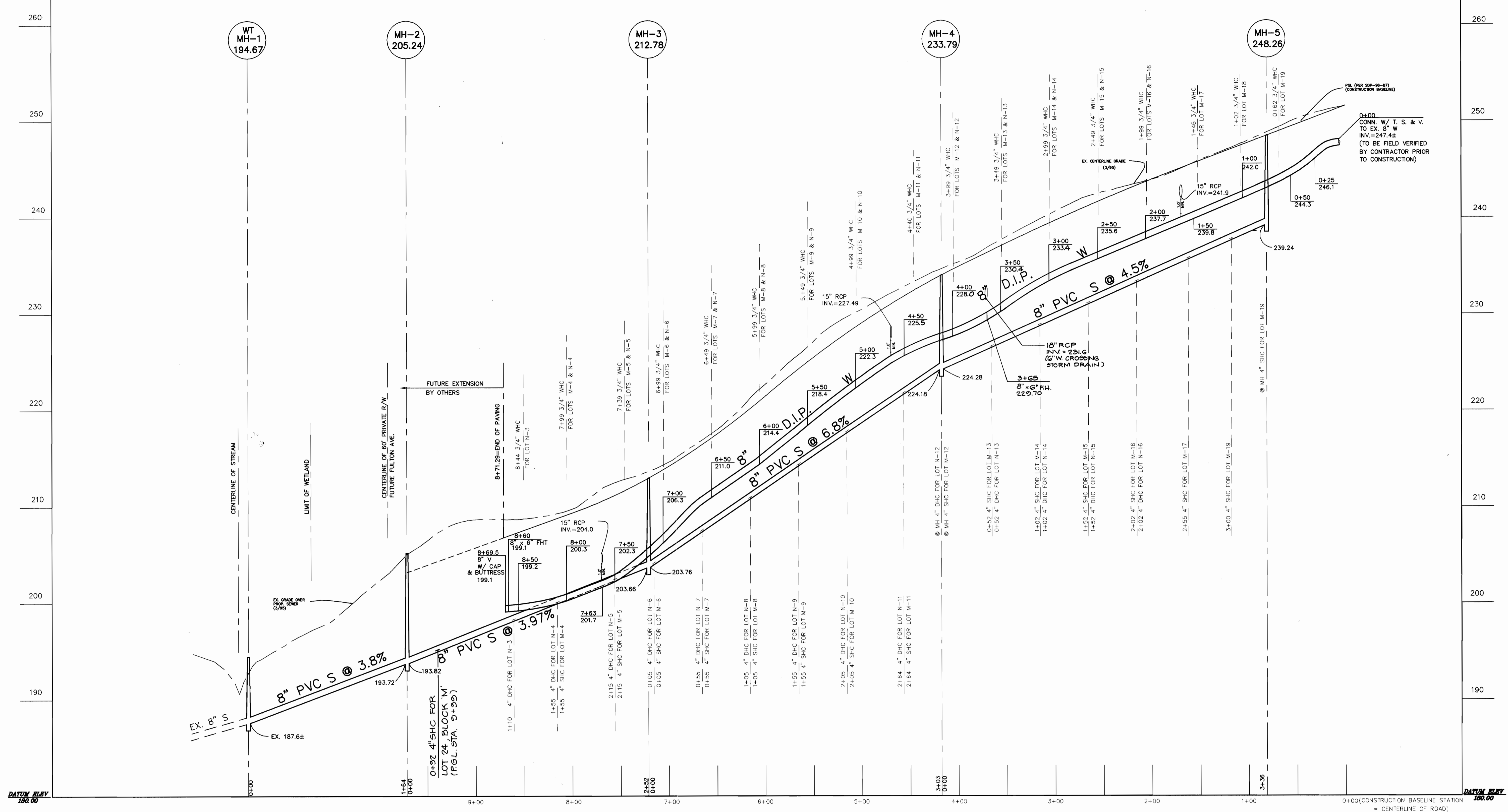
TSA GROUP, INC.
planning • engineering • surveying
8480 Baltimore National Pike • Suite 418
Ellicott City, Maryland 21043



DES:	YSL			
DRN:	YSL			
CHK:	CAM	MLV 3	ADD SHC, LOT 24, BLOCK 'M'	3-24-00
		MLV 2	ADD 10' PUBLIC WATER, SEWER + UTILITY EASEMENT	10/9/96
		MLV 1	ADD FIRE HYDRANT	6/5/96
DATE:	3/5/96	BY	NO.	

PLAN
WATER & SEWER EXTENSION
600 SCALE MAP NO. 50
BLOCK "3"

NORTH LAUREL PARK
LOTS 3 THRU 16, BLOCK "N"
LOTS 4 THRU 19, BLOCK "M"
HOWARD COUNTY ELECTION DISTRICT NO. 6
CONTRACT NO. 24-3509-D
SCALE AS SHOWN
SHEET 1 OF 2



THIS PLAN IS APPROVED FOR SOIL EROSION AND SEDIMENT CONTROL BY THE HOWARD SOIL CONSERVATION DISTRICT.

John P. Roberts 6/11/96
 HOWARD SOIL CONSERVATION DISTRICT DATE

SEDIMENT CONTROL MEASURES FOR THIS CONTRACT WILL BE IMPLEMENTED IN ACCORDANCE WITH SECTION 219 OF THE HOWARD COUNTY STANDARD SPECIFICATIONS AND APPROVED SDP-96-87.

HOWARD SOIL CONSERVATION DISTRICT:
 REVIEWED FOR HOWARD SOIL CONSERVATION DISTRICT AND MEETS TECHNICAL REQUIREMENTS

J. L. Warfield 6/11/96
 NATURAL RESOURCES CONSERVATION SERVICE DATE

OWNER/DEVELOPER
 CORNERSTONE HOMES
 6571 HUNTSIRE DRIVE
 ELKCRIDGE, MARYLAND 21227
 (410) 379-0157

PARK AVE. WATER & SEWER PROFILE

SCALE: HOR. : 1" = 50'
 VERT. : 1" = 5'

NOTE: ALL DHC (SEWER DROP HOUSE CONNECTIONS) PER HOWARD CO. DESIGN MANUAL, VOLUME II-WATER AND SEWER, STANDARD DETAIL --APPENDIX 13.

DEPARTMENT OF PUBLIC WORKS
 HOWARD COUNTY, MARYLAND

R. J. ... 6-5-96
 CHIEF, BUREAU OF UTILITIES DATE

DEPARTMENT OF PLANNING & ZONING
 HOWARD COUNTY, MARYLAND

... 6/14/96
 CHIEF, DEVELOPMENT ENGINEERING DIVISION DATE

TSA GROUP, INC.
 planning • engineering • surveying
 8480 Baltimore National Pike • Suite 418
 Ellicott City, Maryland 21043



DES:	YSL			
DRN:	YSL			
CHK:	CAM	MLV 2	ADD SHC, LOT 24, BLOCK 'M'	3-24-00
DATE:	3/5/96	MLV 1	ADD F.H., REV. WATER MAIN PROFILE	6-5-96
BY:	NO.		REVISIONS	DATE

PROFILE
 WATER & SEWER EXTENSION

600 SCALE MAP NO. 50 BLOCK "3"

NORTH LAUREL PARK
 LOTS 3 THRU 16, BLOCK "N"
 LOTS 4 THRU 19, BLOCK "M"
 HOWARD COUNTY ELECTION DISTRICT NO. 6
 CONTRACT NO. 24-3509-D

SCALE AS SHOWN
 SHEET 2 OF 2