

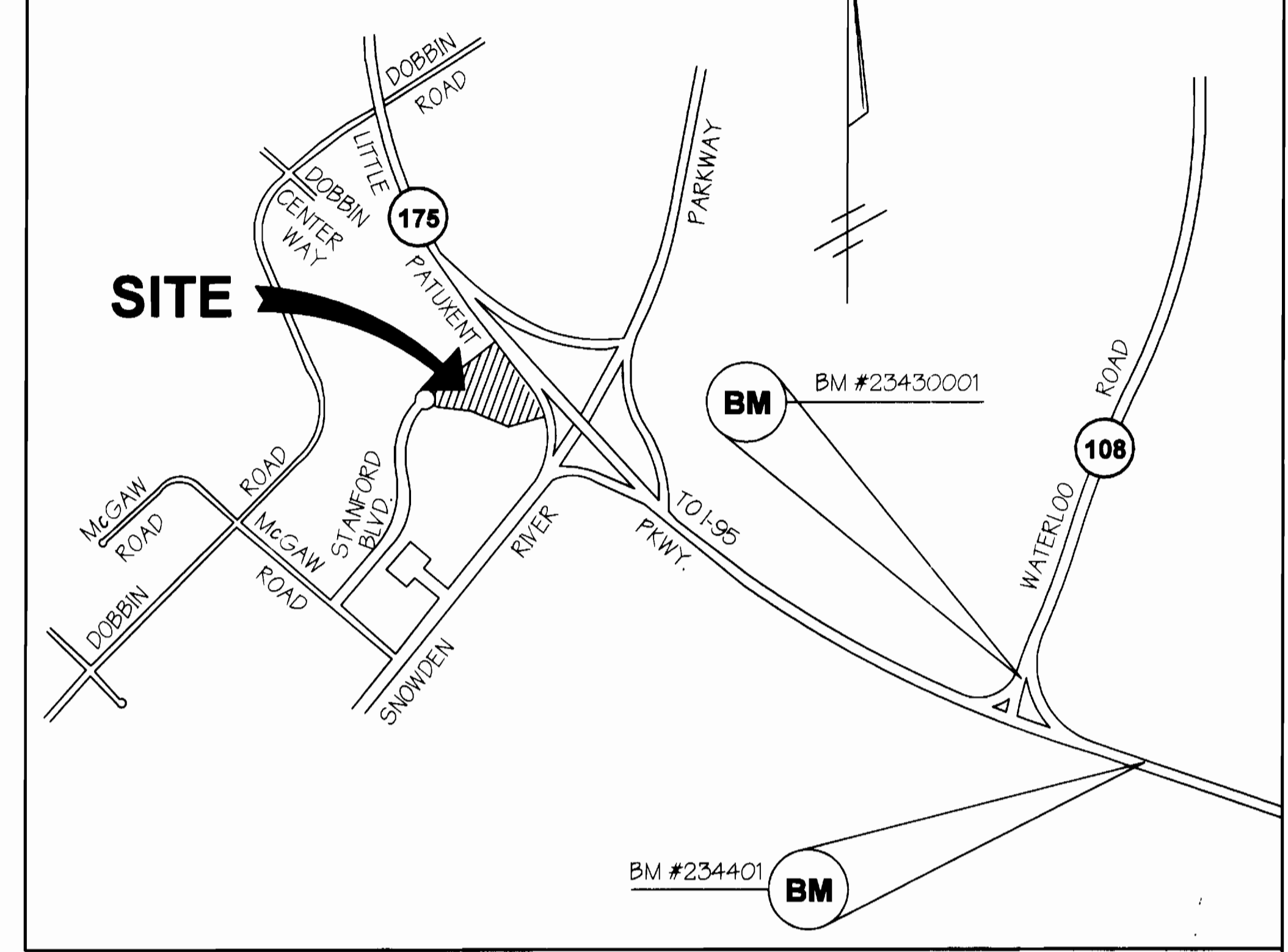
GENERAL NOTES

- Approximate location of existing mains are shown. The contractor shall take all necessary precautions to protect existing mains and services and maintain uninterrupted supply. Any damage incurred shall be repaired immediately to the satisfaction of the Engineer at the Contractor's expense.
- All horizontal controls are based on Maryland State Coordinates.
- All vertical controls are based on U.S.G.S. data.
- All pipe elevations shown are invert elevations.
- Clear all utilities by a minimum of 6". Clear all poles by 2'-0" minimum of tunnels required. The owner has contacted the utility companies and has made arrangements for bracing of poles as shown on the drawings. In the event the contractor's work requires the bracing of additional poles, any cost incurred by the owner for bracing of additional poles or damages shall be deducted from money owed to the contractor. The contractor shall coordinate with the utility companies to schedule the bracing of the poles.
- For details not shown on the drawings, and for materials and construction methods use Howard County Design Manual, Volume IV, Standard Specifications and Detail for Construction (Latest Edition). The contractor shall have a copy of Volume IV on the job.
- Where test pits have been made on existing utilities, they are noted by the symbol at the location of the test pit. A note or notes containing the results of the test pit or pits is included on the drawings. Existing utilities in the vicinity of the proposed work for which test pits have not been dug shall be located by the contractor two weeks in advance of construction operations at his own expense.
- Contractor shall notify the following utility companies or agencies at least five working days before starting work shown on these plans:

State Highway Administration	531-5533
Baltimore Gas & Electric Co. Contractor Services	850-4620
Baltimore Gas & Electric Co. Underground Damage Control	787-9068
Mesa Utility	1-800-257-7777
Colonial Pipeline Co.	795-1390
Bureau of Utilities, Howard County Department of Public Works	313-4900
- Contractor shall remove trees, stumps and roots along line of excavation. Payment for such removal shall be included in the unit price bid for construction of the main.
- All fill areas within future roadway and under structures to be compacted to a minimum of 95% compaction as determined by AASHTO T-180.
- Valves adjacent to tees shall be strapped to tees.
- All water mains to be D.I.P. Class 52 unless otherwise noted.
- Tops of all water mains to have a minimum of 3-1/2' cover unless otherwise noted.
- All fittings shall be buttressed or anchored with concrete in accordance with the Standard Details unless otherwise provided for on the drawings.
- Fire hydrants shall be set to the bury line elevations shown on the drawings. All fire hydrants shall be restrained and buttressed with concrete in accordance with Standard Details. Soil around the fire hydrant shall be compacted in accordance with Section 1000 and 1005 of the Standard Specifications.
- The contractor shall notify the Bureau of Highways, Howard County, at (410) 313-2450 at least five working days before any open cut of any County road or boring/jacking operation in County roads for laying water/sewer mains or house connections. The approval of these drawings will constitute compliance with DPW requirements per Section 18.114(a) of the Howard County Code.
- The contractor shall not operate any water main valves on the existing water system.
- All water house connections shall be for inside meter setting unless otherwise noted on plans or in specifications.
- All sewer mains shall be D.I.P. AND P.V.C. UNLESS OTHERWISE NOTED.

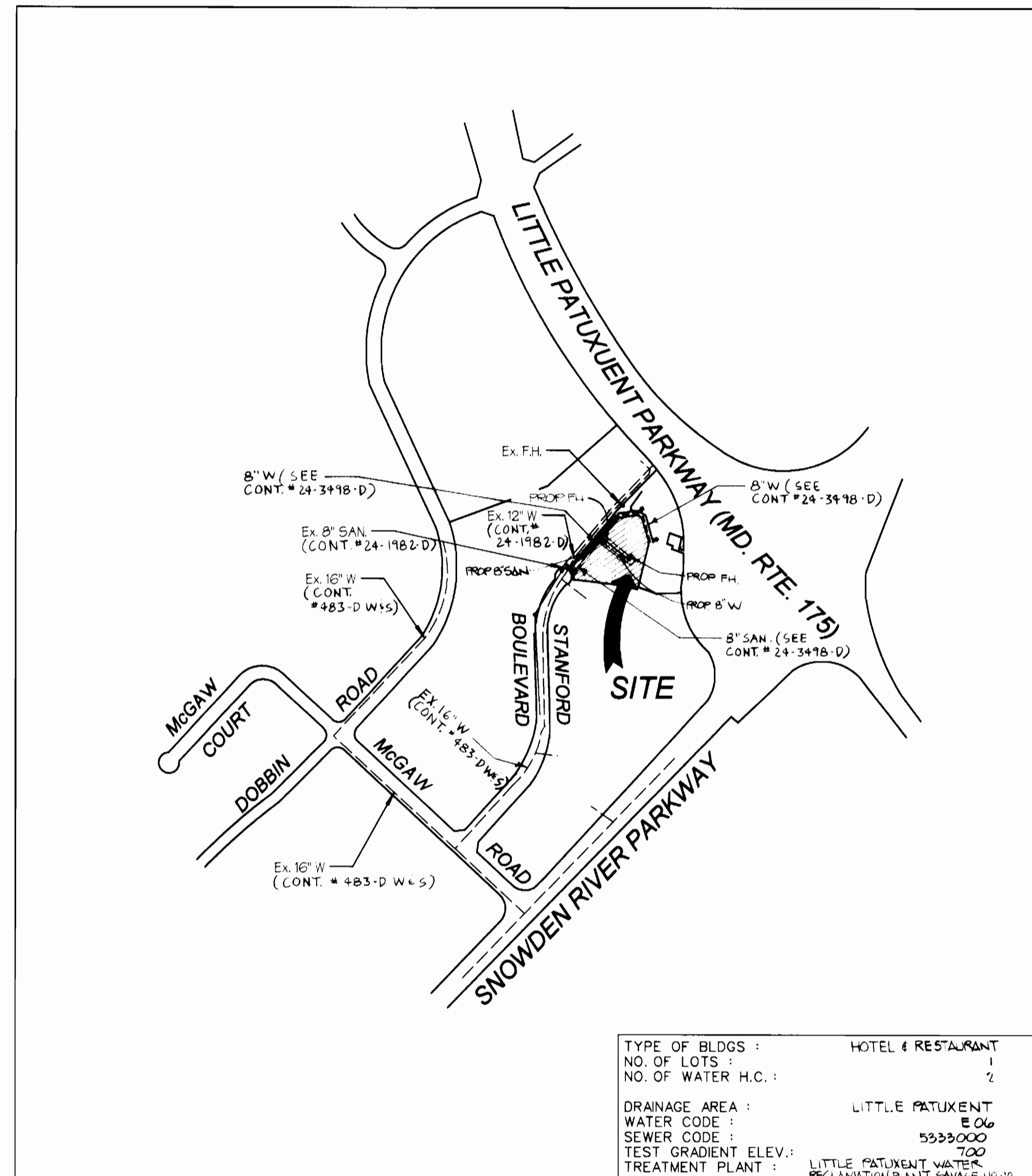
VICINITY MAP

SCALE: 1" = 500'



BENCHMARKS :

BM #234401 ELEVATION : 309.49' STANDARD CONCRETE MONUMENT SET FLUSH SURFACE
 N 491333.018, E 858206.723
 BM #23430001 ELEVATION : 288.24' 3/4" REBAR SET 0.3' BELOW THE SURFACE
 N 492140.801, E 857226.671



LOCATION MAP

SCALE: 1" = 600'

QUANTITIES				
ITEMS	QUANTITIES ESTIMATED	AS-BUILT		
		QUANTITIES	TYPE	MANUFACTURER/ SUPPLIER
6" D.I.P.	45 LF			
8" D.I.P.	255 LF			
8" x 6" CROSS	1 EA			
8" x 6" TEE	2 EA			
6" VALVE	2 EA			
FIRE HYDRANT	2 EA			
NAME OF UTILITY CONTRACTOR :				
SURVEY AND DRAFTING DIVISION AS-BUILT DATE _____				

SEDIMENT CONTROL MEASURES FOR THIS CONTRACT WILL BE IMPLEMENTED IN ACCORDANCE WITH SECTION 219 OF THE STANDARD SPECIFICATIONS AND SDP 96-71

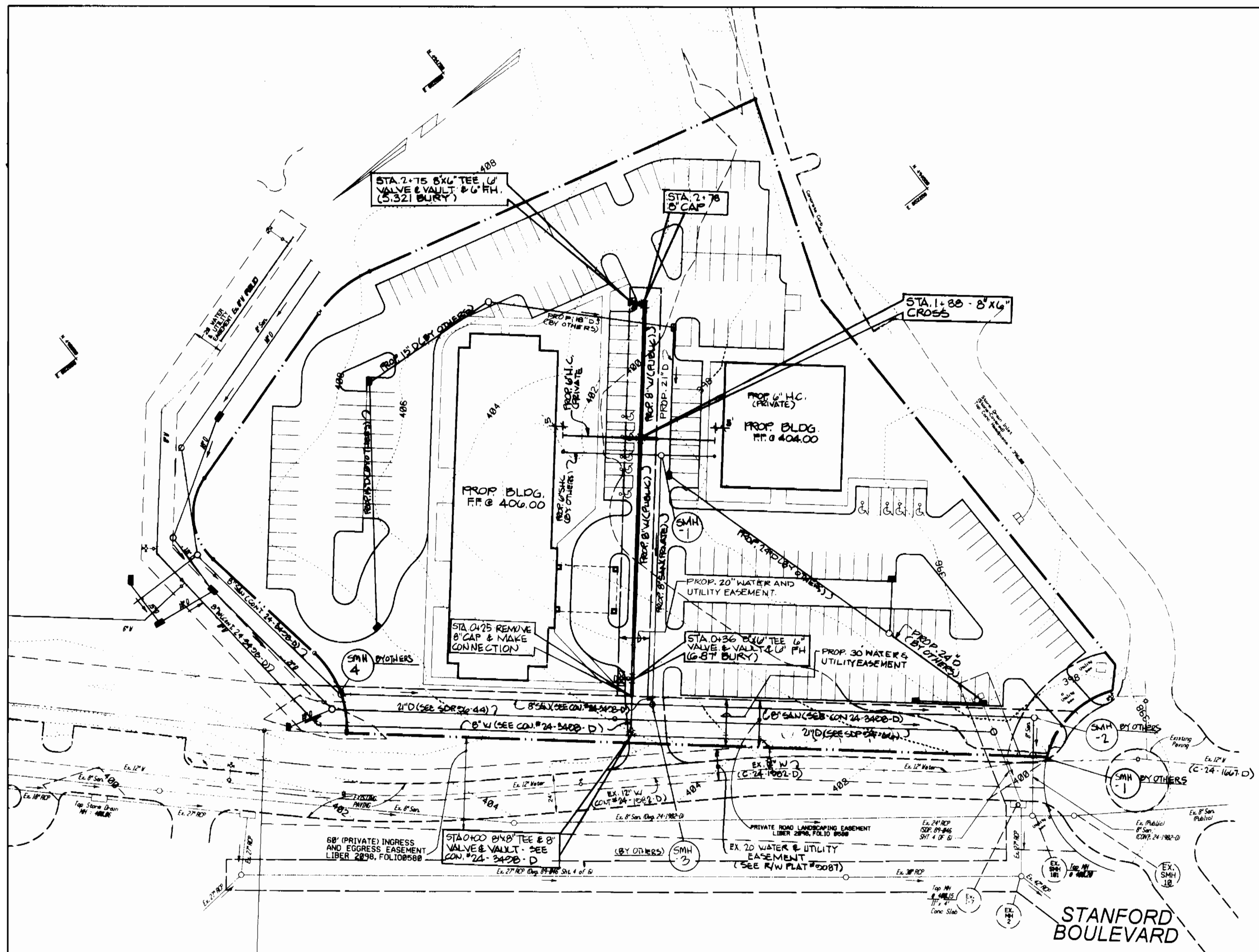
THE DEVELOPMENT PLAN IS APPROVED FOR SOIL EROSION AND SEDIMENT CONTROL BY THE HOWARD SOIL CONSERVATION DISTRICT.

APPROVED : *John R. Peltier* 4/21/96
 HOWARD SOIL CONSERVATION DISTRICT DATE

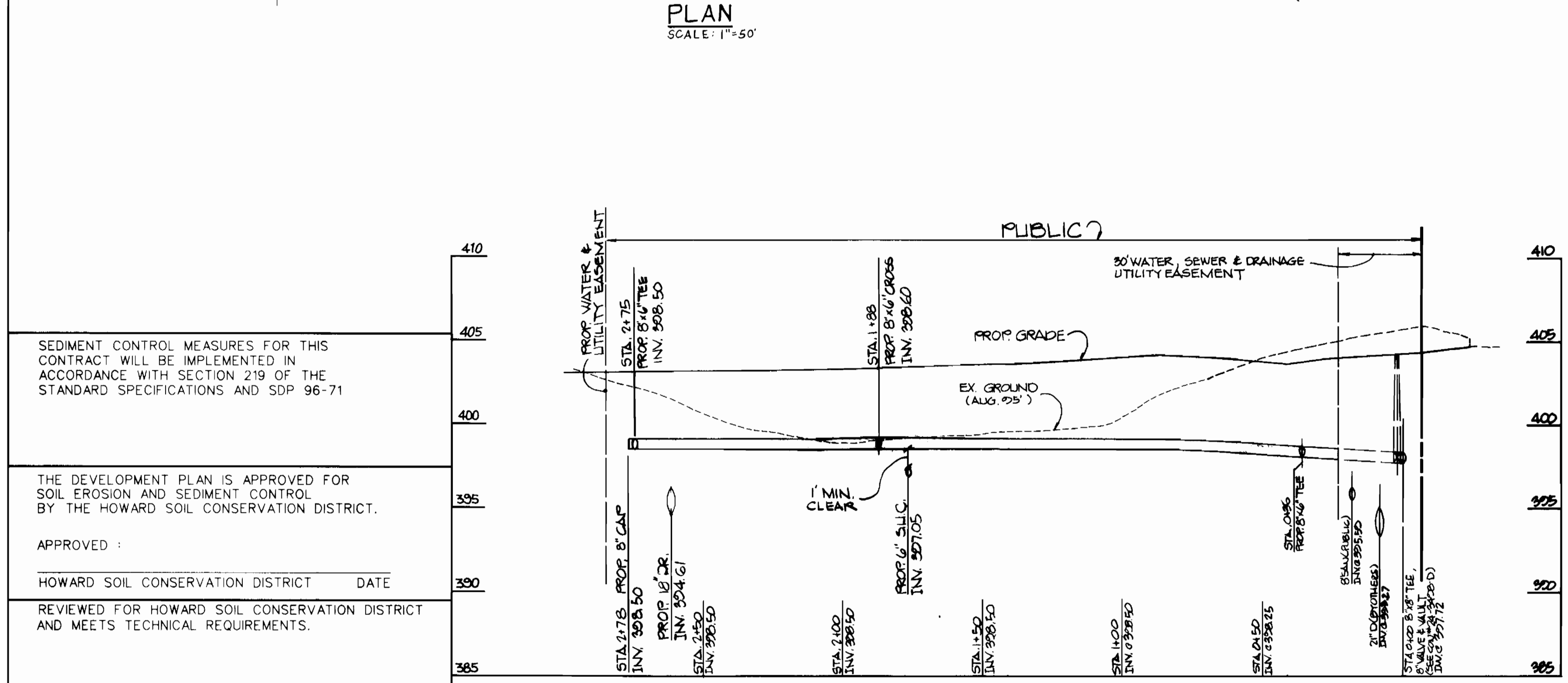
REVIEWED FOR HOWARD SOIL CONSERVATION DISTRICT AND MEETS TECHNICAL REQUIREMENTS.
J. A. Wainfield 4/19/96
 S. SOIL CONSERVATION DISTRICT DATE

BY	NO.	REVISION	DATE

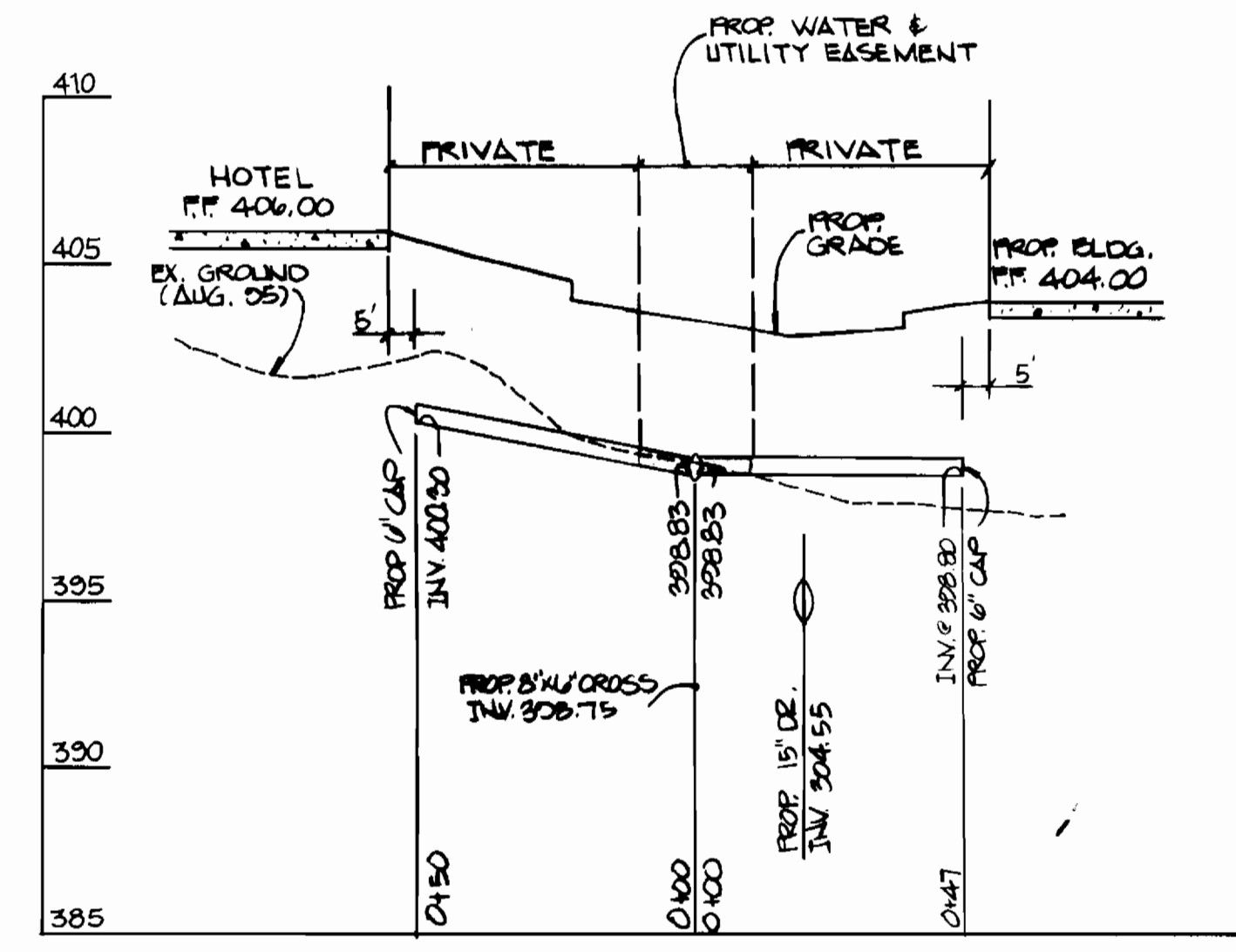
DEPARTMENT OF PUBLIC WORKS HOWARD COUNTY, MARYLAND <i>Robert S. Bunn</i> 4-17-96 CHIEF, BUREAU OF UTILITIES DATE	DEPARTMENT OF PLANNING & ZONING HOWARD COUNTY, MARYLAND <i>John R. Peltier</i> 4/21/96 CHIEF, DEVELOPMENT ENGINEERING DIVISION DATE	GEORGE W. STEPHENS, JR. AND ASSOCIATES, INC. Civil Engineers and Land Surveyors 658 Kenilworth Drive, Suite 100 Towson Maryland 21204 (410) 825-8120	DESIGNED : RAM DRAFTED : EMT CHECKED : PRC	GENERAL NOTES & LOCATION MAP FOR PUBLIC WATER MAIN CONTRACT NO. 24-3504-D 600 SCALE MAP NO. 36	"WINGATE INN" COLUMBIA CORPORATE PARK PARCEL A-27 HOWARD COUNTY, MARYLAND ELECTION DISTRICT #6 JANUARY 2, 1996 SHEET 1 OF 2 P/N 8020 - waterplan.dgn
---	--	---	--	---	--



PLAN
SCALE: 1" = 50'



PROFILE 8" WATER MAIN
SCALE: HORIZ: 1" = 50' VERT: 1" = 5'



PROPOSED 6" WATER HOUSE CONNECTIONS
SCALE: HORIZ: 1" = 50' VERT: 1" = 5'

SEDIMENT CONTROL MEASURES FOR THIS CONTRACT WILL BE IMPLEMENTED IN ACCORDANCE WITH SECTION 219 OF THE STANDARD SPECIFICATIONS AND SDP 96-71

THE DEVELOPMENT PLAN IS APPROVED FOR SOIL EROSION AND SEDIMENT CONTROL BY THE HOWARD SOIL CONSERVATION DISTRICT.

APPROVED:

HOWARD SOIL CONSERVATION DISTRICT DATE

REVIEWED FOR HOWARD SOIL CONSERVATION DISTRICT AND MEETS TECHNICAL REQUIREMENTS.

U.S. SOIL CONSERVATION SERVICE DATE

DEPARTMENT OF PUBLIC WORKS
HOWARD COUNTY, MARYLAND

Robert B. ...
CHIEF, BUREAU OF UTILITIES DATE

DEPARTMENT OF PLANNING & ZONING
HOWARD COUNTY, MARYLAND

Michael ...
CHIEF, DEVELOPMENT ENGINEERING DIVISION DATE

GWS
**GEORGE W. STEPHENS, JR.
AND ASSOCIATES, INC.**
Civil Engineers and Land Surveyors
658 Kenilworth Drive, Suite 100
Towson, Maryland 21284
(410) 825-8120

Phillip ...

DESIGNED: RAM
DRAFTED: EMT
CHECKED: PRC

**PLAN AND PROFILE
FOR
PUBLIC WATER MAIN**

CONTRACT NO. 24-5504-D
600 SCALE MAP NO. 36 BLOCK NO. 23 & 24

**"WINGATE INN"
COLUMBIA CORPORATE PARK
PARCEL A-27**

HOWARD COUNTY, MARYLAND
ELECTION DISTRICT #6

JANUARY 2, 1996
SHEET 2 OF 2

REVISION NO. 1 OF 3