

GENERAL NOTES

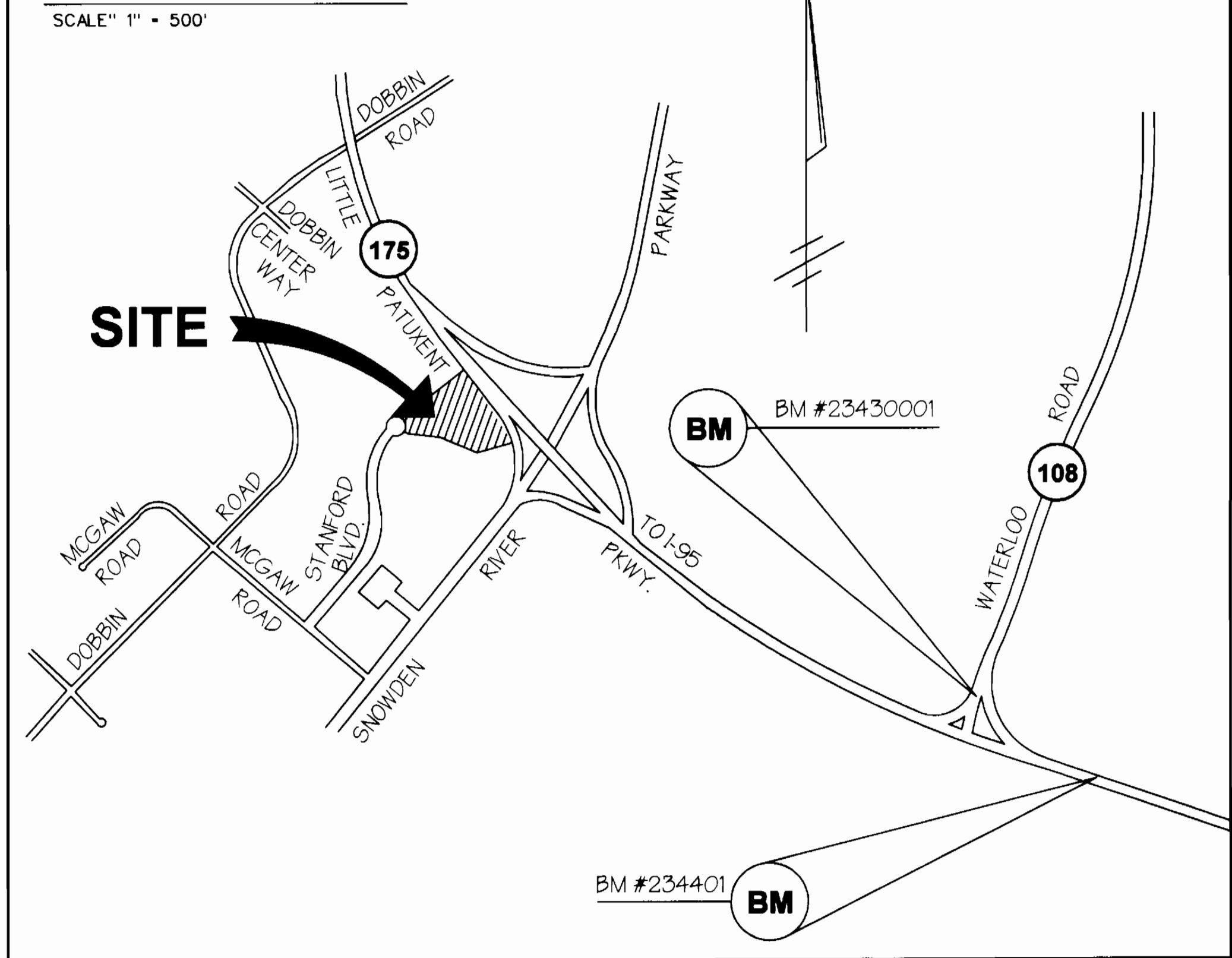
- Approximate location of existing mains are shown. The contractor shall take all necessary precautions to protect existing mains and services and maintain uninterrupted supply. Any damage incurred shall be repaired immediately to the satisfaction of the Engineer at the Contractor's expense.
- All horizontal controls are based on Maryland State Coordinates.
- All vertical controls are based on U.S.G.S. data.
- All pipe elevations shown are invert elevations.
- Clear all utilities by a minimum of 6". Clear all poles by 2'-0" minimum or tunnels as required. The owner has contacted the utility companies and has made arrangements for bracing of poles as shown on the drawings. In the event the contractor's work requires the bracing of additional poles, any cost incurred by the owner for bracing of additional poles or damages shall be deducted from money owed the contractor. The contractor shall coordinate with the utility companies to schedule the bracing of the poles.
- For details not shown on the drawings, and for materials and construction methods use Howard County Design Manual, Volume IV, Standard Specifications and Detail for Construction (Latest Edition). The contractor shall have a copy of Volume IV on the job.
- Where test pits have been made on existing utilities, they are noted by the symbol at the location of the test pit. A note or notes containing the results of the test pit or pits is included on the drawings. Existing utilities in the vicinity of the proposed work for which test pits have not been dug shall be located by the contractor two weeks in advance of construction operations at his own expense.
- Contractor shall notify the following utility companies or agencies at least five working days before starting work shown on these plans:

State Highway Administration	531-5533
Baltimore Gas & Electric Co. Contractor Services	850-4620
Baltimore Gas & Electric Co. Underground Damage Control	787-9088
Miss Utility	1-800-257-7777
Colonial Pipeline Co.	795-1390
Bureau of Utilities, Howard County Department of Public Works	313-4900
- Contractor shall remove trees, stumps and roots along line of excavation. Payment for such removal shall be included in the unit price bid for construction of the main.
- All fill areas within future roadway and under structures to be compacted to a minimum of 95% compaction as determined by AASHTO T-180.
- Valves adjacent to tees shall be strapped to tees.
- All water mains to be D.I.P. Class 52 unless otherwise noted.
- Tops of all water mains to have a minimum of 3-1/2' cover unless otherwise noted.
- All fittings shall be buttressed or anchored with concrete in accordance with the Standard Details unless otherwise provided for on the drawings.
- Fire hydrants shall be set to the bury line elevations shown on the drawings. All fire hydrants shall be restrained and buttressed with concrete in accordance with Standard Details. Soil around the fire hydrant shall be compacted in accordance with Section 1000 and 1005 of the Standard Specifications.
- The contractor shall notify the Bureau of Highways, Howard County, at (410) 313-2451 at least five working days before any open cut of any County road or boring/jacking operation in County roads for laying water/sewer mains or house connections. The approval of these drawings will constitute compliance with DPW requirements per Section 18.114(a) of the Howard County Code.
- The contractor shall not operate any water main valves on the existing water system.
- All water house connections shall be for inside meter setting unless otherwise noted on plans or in specifications.
- All sewer mains shall be D.I.P., R-G.P., V-G.P.X., G.S.P.X., R-G-G.P. AND P.V.C. UNLESS OTHERWISE NOTED.
- All manholes shall be 4'-0" inside diameter unless otherwise noted.

- Manholes must be Precast Concrete Structures.
- Manholes shown with 12" and 16" area for Brick manholes only.

FROM	TO	DISTANCE
SMH - 5	SEWER STUB	13'
8" WATER STUB	"	14'
SMH - 3	END 8" WATER STUB	20'
8" V. STA. 1+00	8" V. STA. 1+00	23'
6" " " 4+30	END WATER STUB	31'
" " " 4+35	8" V. STA. 4+35	31'
0" F.H.V. 4+50	SMH - 5	24'
" " " 4+55	8" F.H.V. STA. 4+50	31'
" " " 6+24	STA. "	20'
" " " "	SMH - 5	15'
" " " "	8" CAP STA. 6+28	17'
" " " "	F.H. STA. 6+24	
" " " "	8" CAP STA. 6+28	

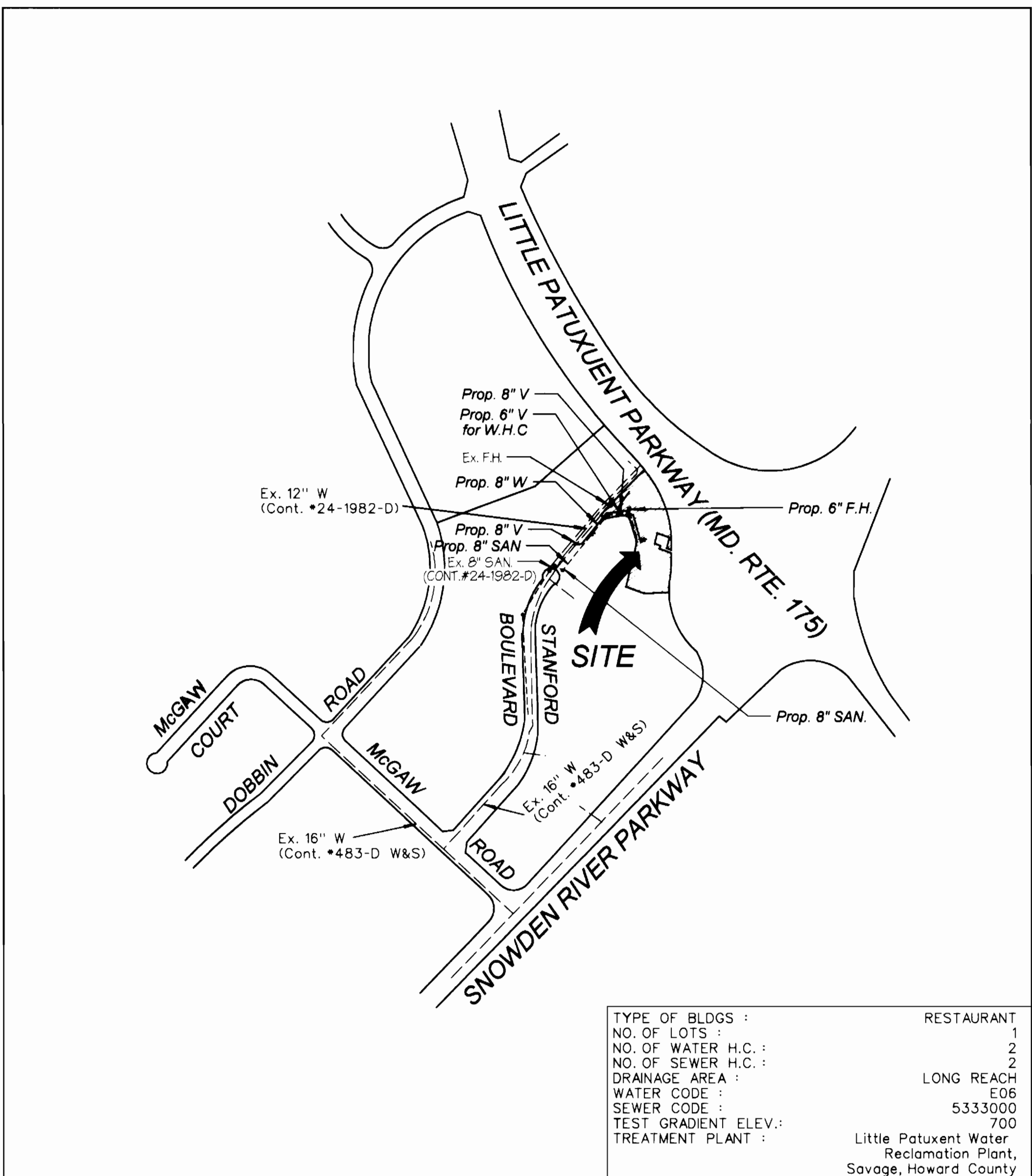
VICINITY MAP



BENCHMARKS :

BM #234401 ELEVATION : 309.49' STANDARD CONCRETE MONUMENT SET FLUSH SURFACE
 N 491333.018, E 858206.723

BM #23430001 ELEVATION : 288.24' 3/4" REBAR SET 0.3" BELOW THE SURFACE
 N 492140.801, E 857226.671



LOCATION MAP

SCALE : 1" = 600'

TYPE OF BLDGS : RESTAURANT
 NO. OF LOTS : 1
 NO. OF WATER H.C. : 2
 NO. OF SEWER H.C. : 2
 DRAINAGE AREA : LONG REACH
 WATER CODE : E06
 SEWER CODE : 5333000
 TEST GRADIENT ELEV. : 700
 TREATMENT PLANT : Little Patuxent Water Reclamation Plant, Savage, Howard County

QUANTITIES

ITEMS	QUANTITIES ESTIMATED	AS-BUILT		
		QUANTITIES	TYPE	MANUFACTURER/ SUPPLIER
8" VALVE	3	2 EA.	GATE	MUELLER/ WATER PRO
8" DIP WATER MAIN	688'			ATLANTIC STATES / " "
6" DIP WATER MAIN	32'			" / " "
8" X 6" TEE	3			FORM UNION/ FOUNDRY " "
6" VALVE	3			MUELLER CO/ " "
FIRE HYDRANT	2			" " / " "
12" X 8" TAPPING SLEEVE VALVE	1			" " / " "
8" SAN.	477'			JM MFRGR / " "
SAN. MANHOLE (G5.11)	4			ATLANTIC CONCRETE

NAME OF UTILITY CONTRACTOR : UTILITIES UNLIMITED, INC.
 SURVEY AND DRAFTING DIVISION AS-BUILT DATE _____

SEDIMENT CONTROL MEASURES FOR THIS CONTRACT WILL BE IMPLEMENTED IN ACCORDANCE WITH SECTION 219 OF THE STANDARD SPECIFICATIONS, SDP 96-44 AND FDP-117A-1

THE DEVELOPMENT PLAN IS APPROVED FOR SOIL EROSION AND SEDIMENT CONTROL BY THE HOWARD SOIL CONSERVATION DISTRICT.

APPROVED: *Patricia Engle* 2/23/96
 HOWARD SOIL CONSERVATION DISTRICT DATE

REVIEWED FOR HOWARD SOIL CONSERVATION DISTRICT AND MEETS TECHNICAL REQUIREMENTS.

Paul Plutner 2/23/96
 U.S. SOIL CONSERVATION SERVICE DATE

DEPARTMENT OF PLANNING & ZONING
 HOWARD COUNTY, MARYLAND

Michael J. ... 2/23/96
 CHIEF, DEVELOPMENT ENGINEERING DIVISION DATE

DEPARTMENT OF PUBLIC WORKS
 HOWARD COUNTY, MARYLAND

Michael J. ... 2/23/96
 CHIEF, BUREAU OF UTILITIES DATE

GEORGE W. STEPHENS, JR. AND ASSOCIATES, INC.
 Civil Engineers and Land Surveyors
 658 Kenilworth Drive, Suite 100
 Towson Maryland 21204
 (410) 825-8120

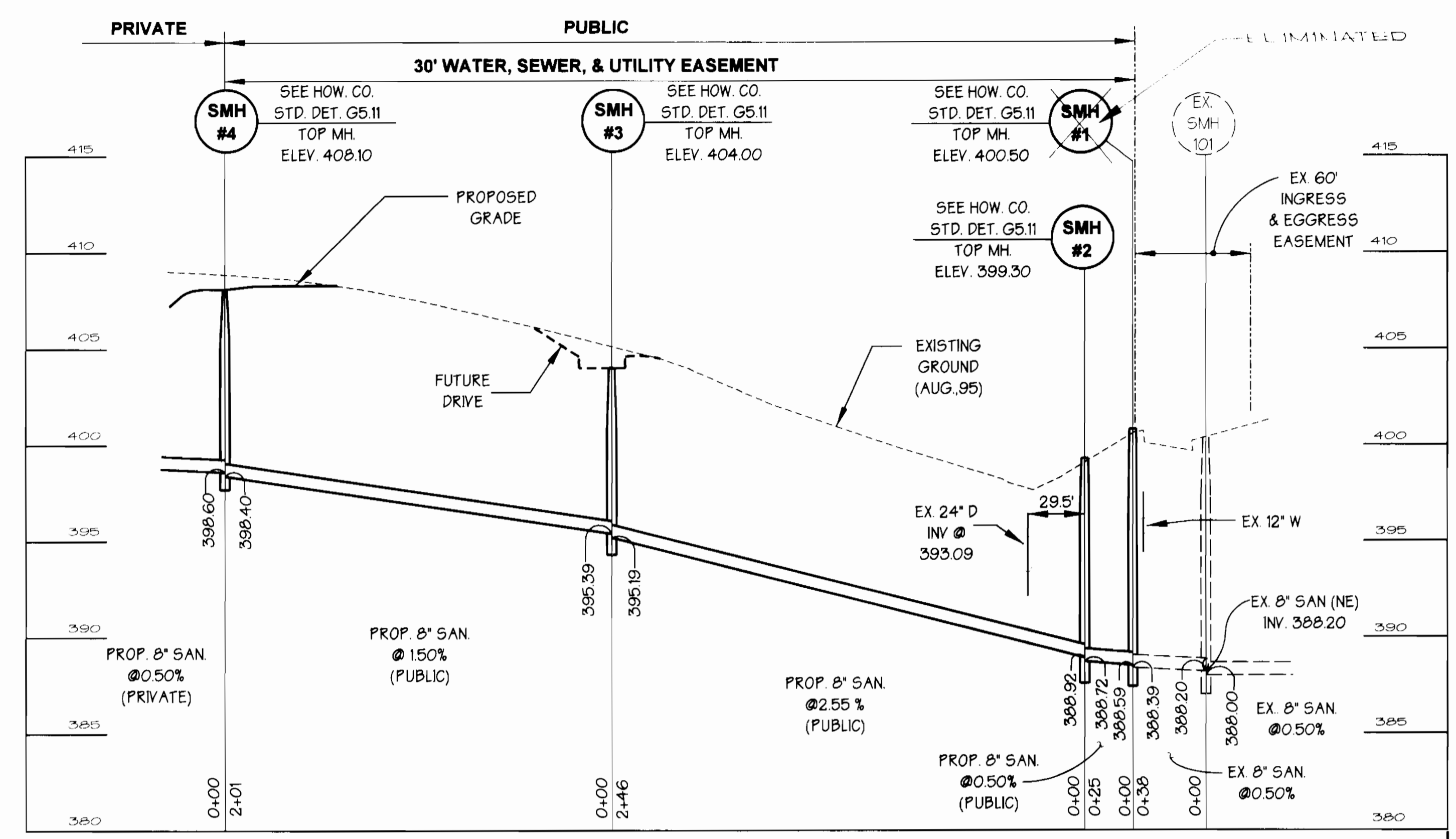
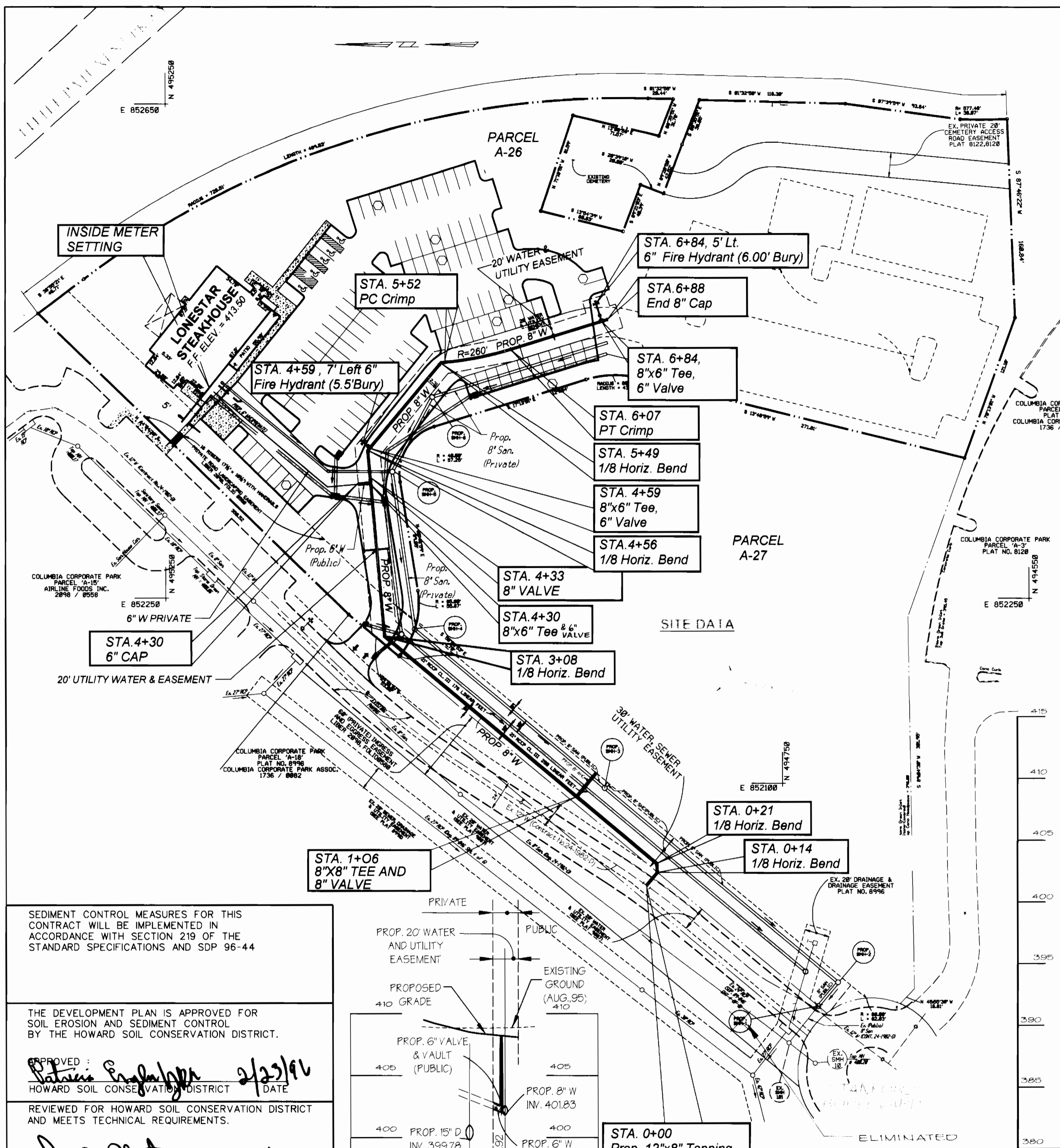
DESIGNED : RAM
 DRAFTED : EMT
 CHECKED : PRC

GENERAL NOTES & LOCATION MAP FOR PUBLIC WATER & SEWER MAIN

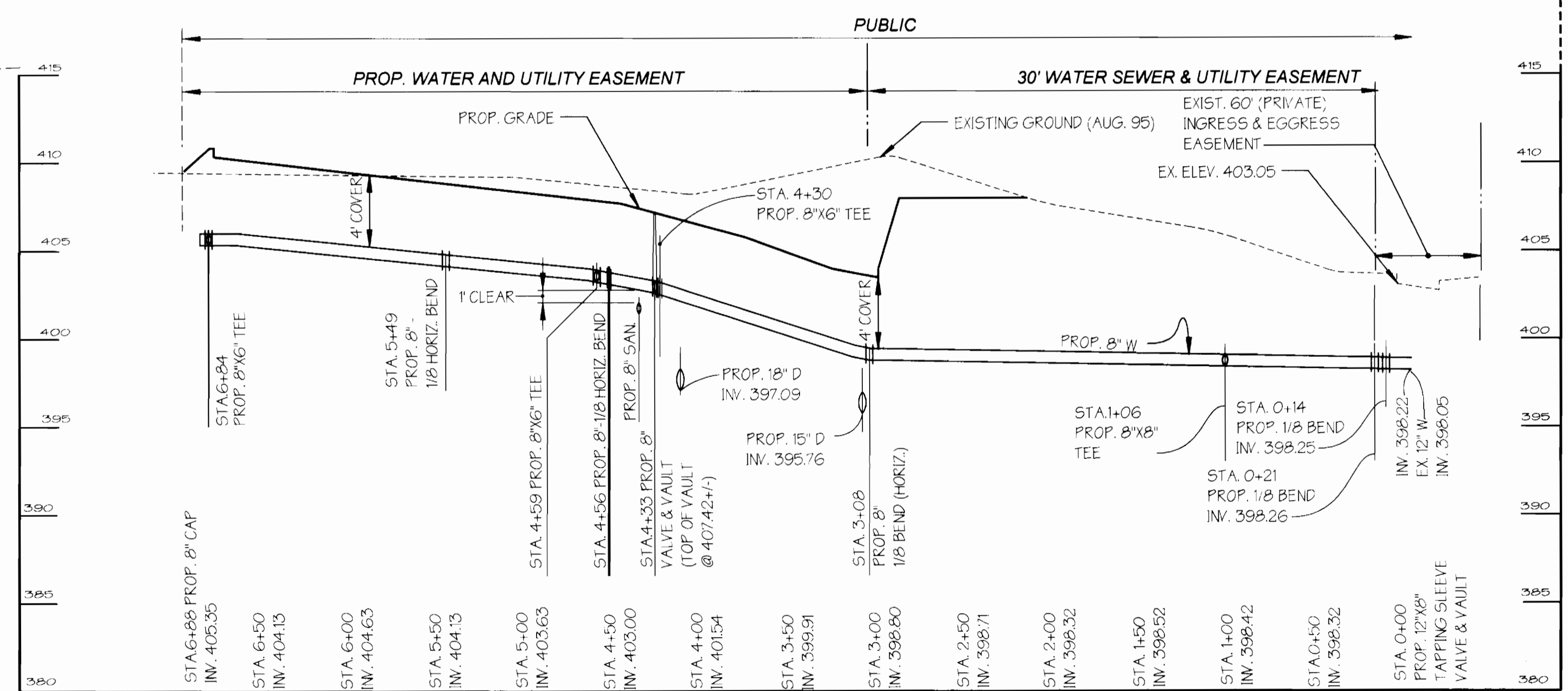
CONTRACT NO. 24-3498-D
 600 SCALE MAP NO. 36 BLOCK NO. 23 & 24

" LONESTAR STEAKHOUSE " COLUMBIA CORPORATE PARK PARCEL A-26

HOWARD COUNTY, MARYLAND ELECTION DISTRICT #6
 OCTOBER 18, 1995 SHEET 1 OF 2



PROFILE 8" SANITARY
SCALE: HORIZ. 1" = 50'
VERT. 1" = 5'



PUBLIC 8" WATER MAIN PROFILE #1
SCALE: HORIZ. 1" = 50'
VERT. 1" = 5'

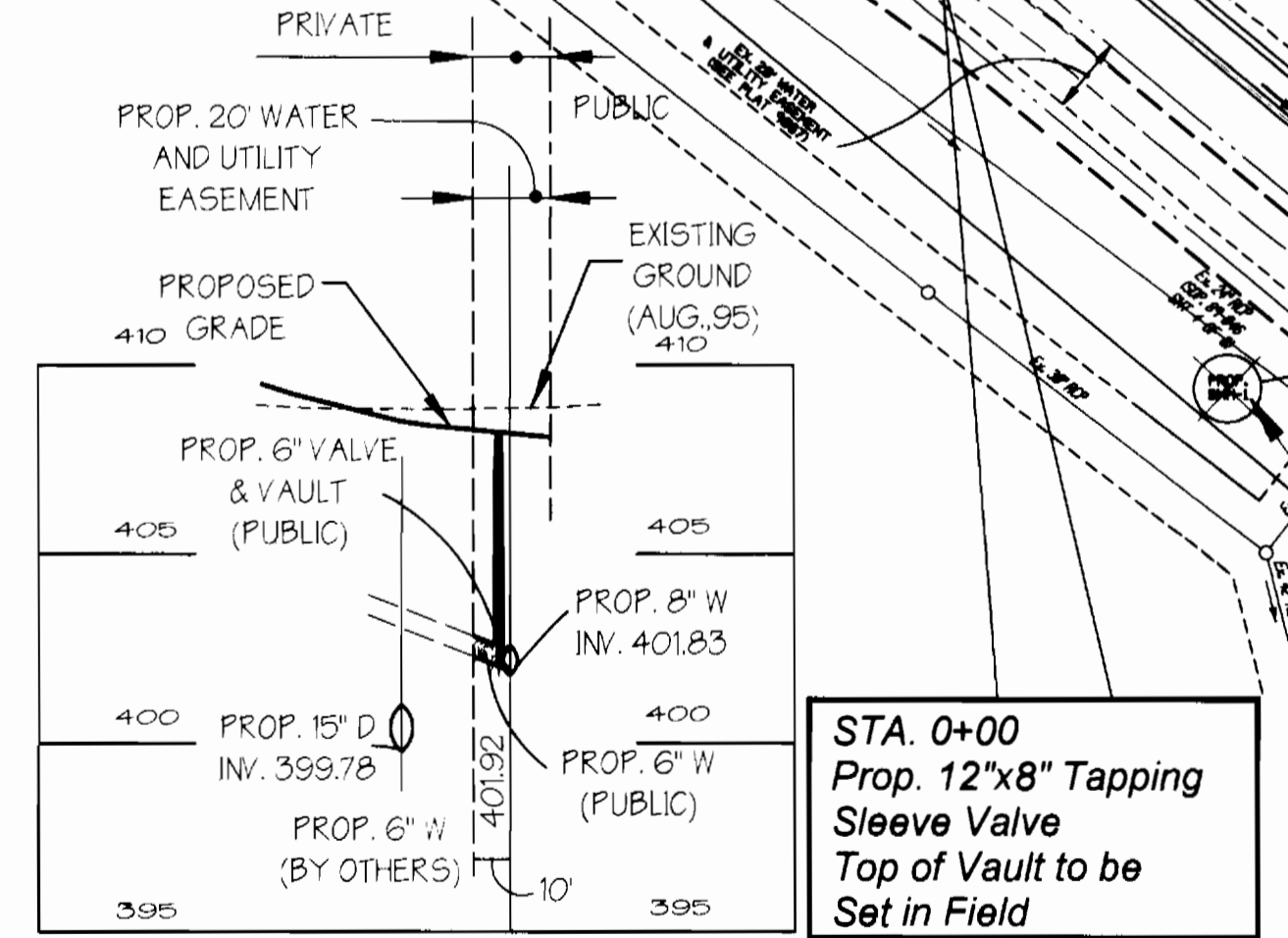
SEDIMENT CONTROL MEASURES FOR THIS CONTRACT WILL BE IMPLEMENTED IN ACCORDANCE WITH SECTION 219 OF THE STANDARD SPECIFICATIONS AND SDP 96-44

THE DEVELOPMENT PLAN IS APPROVED FOR SOIL EROSION AND SEDIMENT CONTROL BY THE HOWARD SOIL CONSERVATION DISTRICT.

APPROVED: *[Signature]* 2/23/96
HOWARD SOIL CONSERVATION DISTRICT DATE

REVIEWED FOR HOWARD SOIL CONSERVATION DISTRICT AND MEETS TECHNICAL REQUIREMENTS.

[Signature] 2/23/96
U.S. SOIL CONSERVATION SERVICE DATE



PROFILE 6" WATER HOUSE CONNECTION PROFILE #2
SCALE: HORIZ. 1" = 50'
VERT. 1" = 5'

PLAN
SCALE: 1" = 50'

DEPARTMENT OF PLANNING & ZONING
HOWARD COUNTY, MARYLAND

[Signature] 2/23/96
CHIEF, DEPARTMENT ENGINEERING DIVISION DATE

DEPARTMENT OF PUBLIC WORKS
HOWARD COUNTY, MARYLAND

[Signature] 2/23/96
CHIEF, BUREAU OF UTILITIES DATE



GEORGE W. STEPHENS, JR. AND ASSOCIATES, INC.
Civil Engineers and Land Surveyors
658 Kenilworth Drive, Suite 100
Towson Maryland 21204
(410) 825-8120

[Signature]

DESIGNED: RAM
DRAFTED: EMT
CHECKED: PRC

PLAN AND PROFILE FOR PUBLIC WATER & SEWER MAIN
CONTRACT NO. 24-3498-D
600 SCALE MAP NO. 36 BLOCK NO. 23 & 24

BY	NO.	REVISION	DATE

"LONESTAR STEAKHOUSE" COLUMBIA CORPORATE PARK PARCEL A-26
HOWARD COUNTY, MARYLAND ELECTION DISTRICT #6
OCTOBER 18, 1995 SHEET 2 OF 2

Lonestar Steakhouse

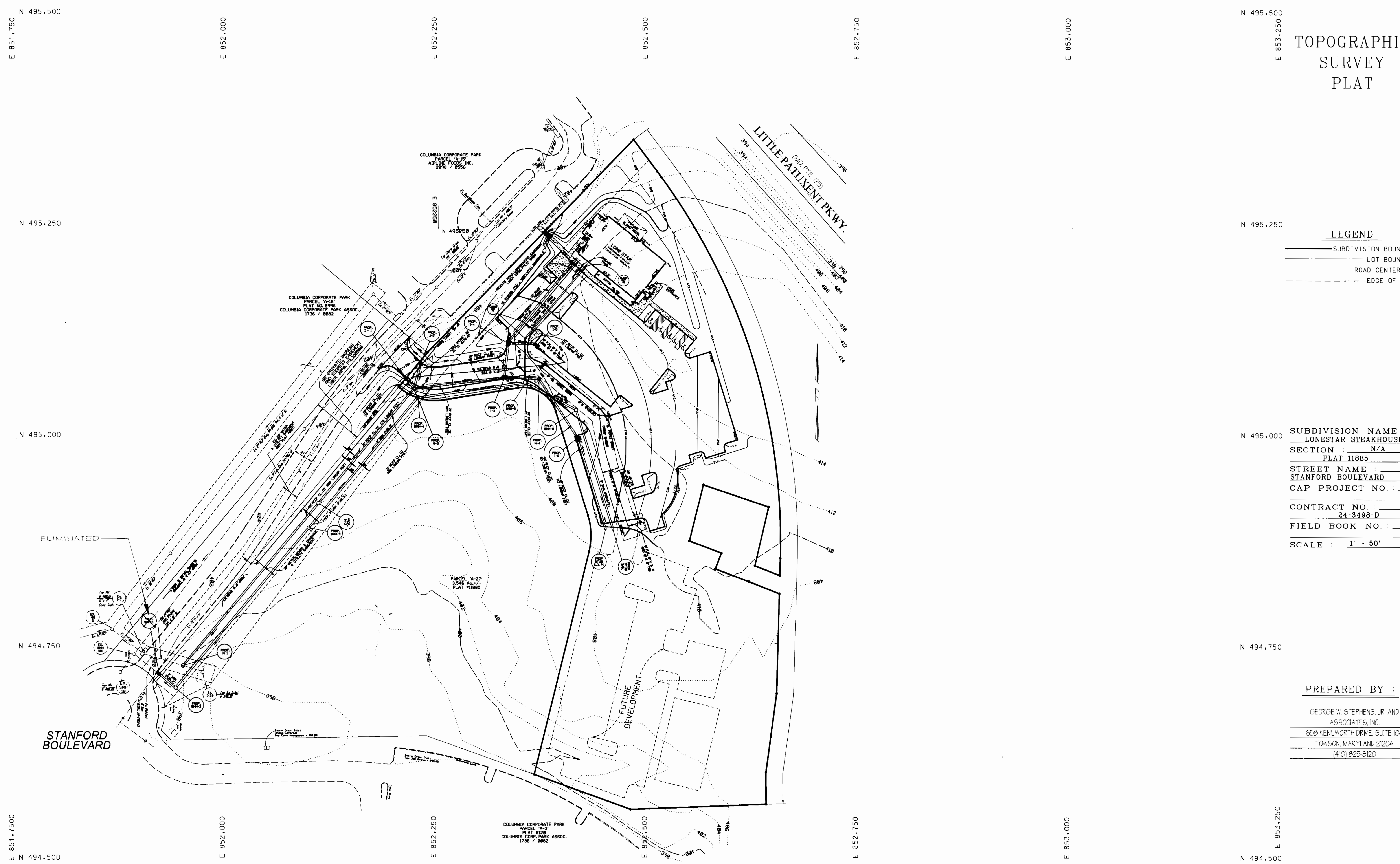
TOPOGRAPHIC SURVEY PLAT

LEGEND

---	SUBDIVISION BOUNDARY
---	LOT BOUNDARY
---	ROAD CENTERLINE
---	EDGE OF ROAD

SUBDIVISION NAME : LONESTAR STEAKHOUSE
 SECTION : N/A
 PLAT 11885
 STREET NAME : STANFORD BOULEVARD
 CAP PROJECT NO. : _____
 CONTRACT NO. : 24-3498-D
 FIELD BOOK NO. : _____
 SCALE : 1" = 50'

PREPARED BY :
GEORGE W. STEPHENS, JR. AND ASSOCIATES, INC.
658 KENLWORTH DRIVE, SUITE 100
TOWSON, MARYLAND 21284
(410) 825-8120



4			8		
3			7		
2			6		
1			5		
NO.	REVISION	DATE	NO.	REVISION	DATE