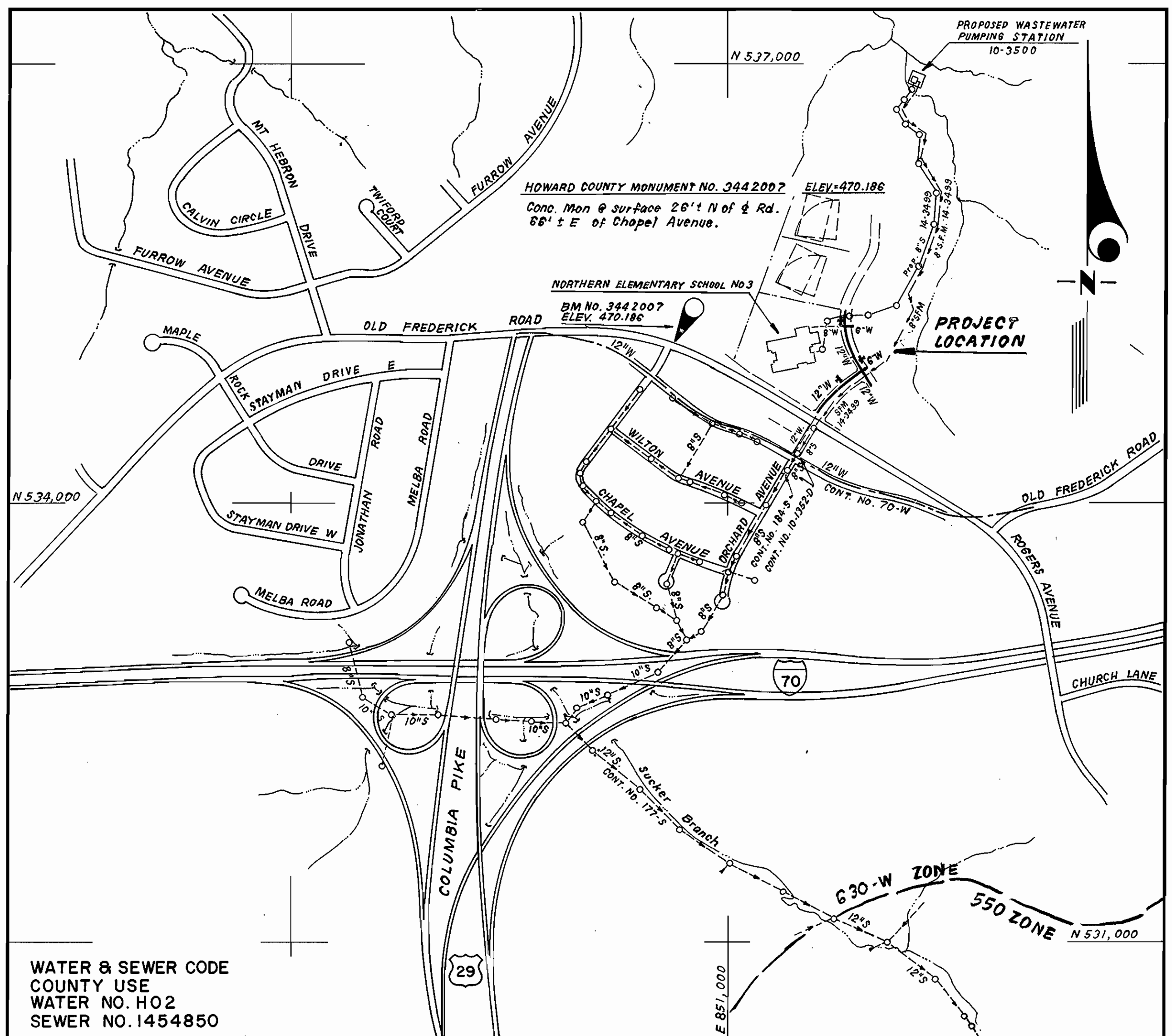


TYPE OF BUILDING ELEMENTARY SCHOOL
 NO. OF LOTS ONE
 NO. OF WHC's ONE
 NO. OF SHC's ONE
 DRAINAGE AREA PATAPSCO
 TREATMENT PLANT PATAPSCO WASTEWATER TREATMENT PLANT



WATER & SEWER CODE
 COUNTY USE
 WATER NO. HO2
 SEWER NO. 1454850
 TEST GRADIENT = 780

VICINITY MAP
 SCALE: 1" = 600'

NORTHERN ELEMENTARY SCHOOL NO. 3
CONTRACT NO.44-3487-D
DANIELS MILL OVERLOOK
LOTS 1 THRU 3 AND PARCEL "A"
HOWARD COUNTY, MARYLAND
DEPARTMENT OF PUBLIC WORKS

GENERAL NOTES

1. Approximate location of existing mains are shown. The contractor shall take all necessary precautions to protect existing mains and services and maintain uninterrupted supply. Any damage incurred shall be repaired immediately to the satisfaction of the Inspector, at the contractor's expense.
2. All horizontal controls are based on Maryland State Coordinates.
3. All vertical controls are based on U.S.G.S. Datum.
4. All pipe elevations shown are invert elevations.
5. Clear all utilities by a minimum of 6" clear all poles by 2'-0" minimum or tunnel as required. Any cost incurred to the contractor for tunneling or bracing at poles shall be included in unit prices bid for excavation and backfill.
6. For details not shown on the drawings use Howard County Standard Details.
7. For materials and construction methods use Howard County Standard Specifications & Details and Howard County Design Manual, Volume IV, (Latest Edition) The Contractor shall have copies of these on the job site.
8. Contractor shall locate existing utilities a minimum of two (2) weeks in advance of construction operations in the vicinity of proposed utilities at his own expense.
9. Contractor shall notify the following utilities or agencies at least five (5) working days before starting work shown on these plans.
 State Highway Administration - 531-5533
 Baltimore Gas & Electric Company - Underground Damage Control - 787-9068
 Baltimore Gas & Electric Company - Contractor Services - 850-4620
 Baltimore Gas & Electric Company - Trouble Shooting - 298-9001
 "Miss Utility" - 1-800-257-7777
 Telephone Company - 1-800-257-7777
 Bell Atlantic
 Bureau of Utilities Howard County - 313-4900
 Colonial Pipeline Company - 795-1390
10. Trees are to be protected from damage to maximum extent. Trees located within the construction strip are not to be removed or damaged by the contractor.
11. Contractor shall remove trees, stumps, and roots along line of excavation as directed by the Inspector. Payment for such removal shall be included in the bid for excavation and backfill.
12. Place regulation "Men Working" and warning signs as required to comply with Maryland State Highway Administration Manual of Traffic Control for Highway Construction and Maintenance Operations.
13. All water mains to be D.I.P. Class 52 unless otherwise noted.
14. Top of all water mains to have a minimum of 3-1/2' cover unless otherwise noted.
15. Valves adjacent to tees shall be strapped to tees.
16. Bury line elevations on fire hydrants shall be set to the elevations shown on the drawings. All fire hydrants shall be restrained and buttressed with concrete in accordance with Sd Det. W.II & W.2.II Soil around the fire hydrant to be compacted in accordance with Sections 1000 & 1005 of the Standard Specifications.
17. All water house connections shall be for an inside meter setting.
18. The contractor shall not operate any water main valves on the existing system.
19. All sewer mains shall be P.V.C. or D.I.P., Class 50 unless otherwise noted.
20. All fittings shall be buttressed or anchored with concrete in accordance with the Standard Details Unless otherwise provided for on the drawings.
21. All manholes shall be 4'-0" inside diameter, unless otherwise noted.
22. Water main and water house connection lines must have a minimum of one foot separation from the sanitary sewer and sewer house connections as they cross. Except at crossings, water and sewer lines shall have a minimum horizontal separation of 10'.
23. Manholes designated thus : WT, shall have a Watertight Frame and Cover.

ITEM	QUANTITIES ESTIMATED	AS BUILT		
		QUANTITIES	TYPE	MANUFACTURER / SUPPLIER
12" W	1098 LF	1102 LF		GRIFFIN
8" W	23 LF	23 LF		"
6" W	74 LF	101 LF		"
FIRE HYDRANT	3EA	3 EA.		KENNEDY
12" V	4 EA	4 EA.		"
8" V	1 EA	1 EA.		"
6" V (Excl. F.H.)	2 EA	2 EA.		"
6" V (F.H.)	2 EA	2 EA.		"
NAME OF UTILITY CONTRACTOR: ACCU-BLD				
SURVEY & DRAFTING DIV. - AS BUILT DATE:				

Sediment Control Measures will be implemented in accordance with Section 219 of the Specifications & with Road Construction Plans F-96-37; Drawing Sediment & Erosion Control.

REVIEWED FOR HOWARD SOIL CONSERVATION DISTRICT AND MEETS TECHNICAL REQUIREMENT
Robert E. Bowen 2/14/96
 SIGNATURE DATE

U.S. SOIL CONSERVATION SERVICE

This Development Plan is approved for Soil Erosion and Sediment Control by the Howard Soil Conservation District.

APPROVED
John P. Rhoton 2/14/96
 HOWARD S.C.D. DATE

DEPARTMENT OF PUBLIC WORKS
 HOWARD COUNTY, MARYLAND

DEPARTMENT OF PLANNING & ZONING
 HOWARD COUNTY, MARYLAND

CFS CLARK • FINEFROCK & SACKETT, INC.
 ENGINEERS • PLANNERS • SURVEYORS
 7135 MINSTREL WAY COLUMBIA MARYLAND 21045
 (301) 381-7500 BALTO. (301) 621-8100 WASH.



DES: JTR	
DRN: JTR	
CHK: CM	
DATE: JUL, 95	
BY: NO.	
REVISION	
DATE	

TITLE SHEET

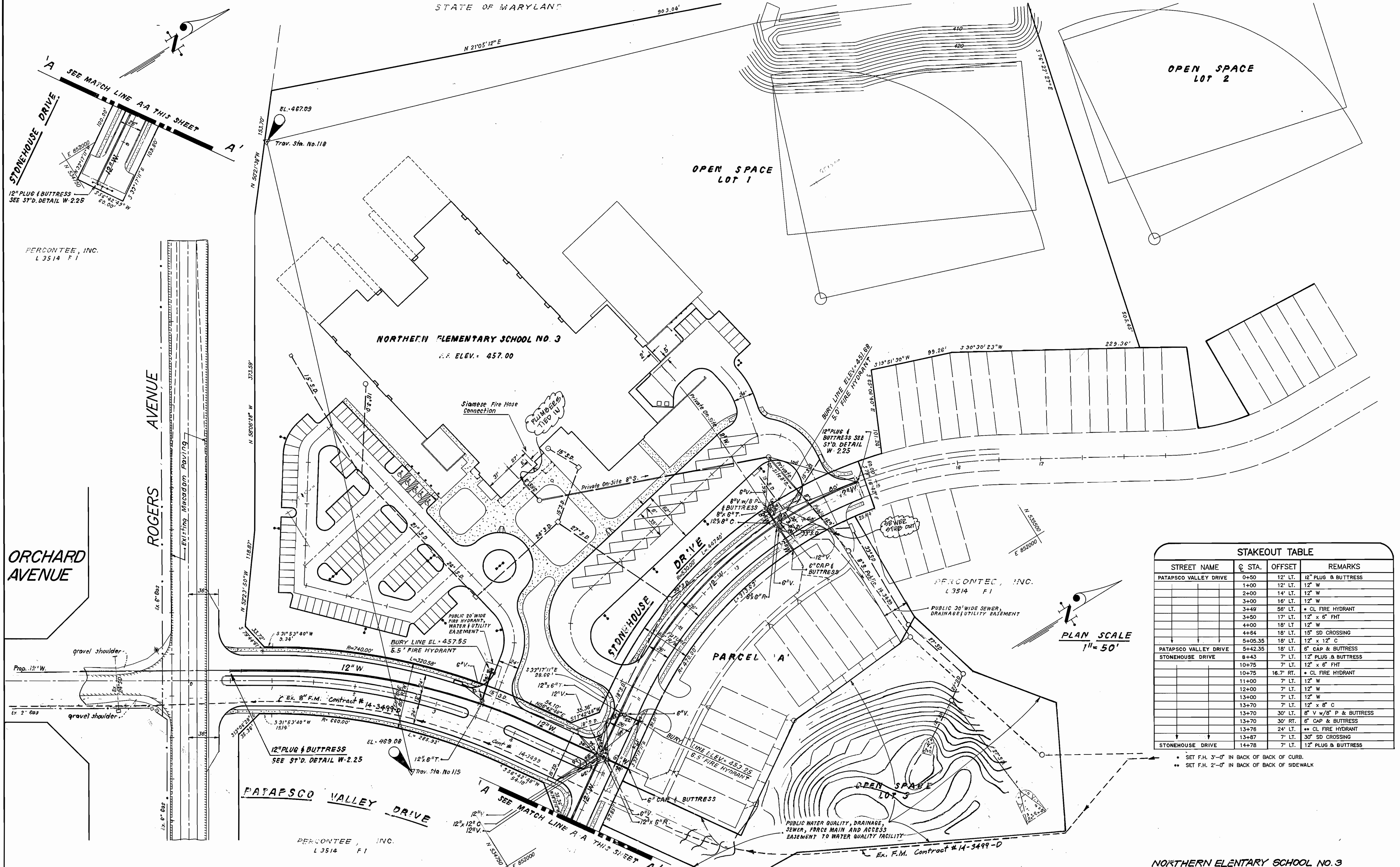
60' SCALE MAP NO. 17 BLOCK NO. 12

NORTHERN ELEMENTARY SCHOOL NO. 3

DANIELS MILL OVERLOOK
 LOTS 1 THRU 3 AND PARCEL "A"
 2ND ELECTION DISTRICT
 HOWARD COUNTY, MARYLAND
 CONTRACT No. 44-3487-D

SCALE
 AS SHOWN
 SHEET
 1 OF 3

AS-BUILTS 414107



STAKEOUT TABLE			
STREET NAME	Q. STA.	OFFSET	REMARKS
PATAPSCO VALLEY DRIVE	0+50	12' LT.	12" PLUG & BUTTRESS
	1+00	12' LT.	12" W
	2+00	14' LT.	12" W
	3+00	16' LT.	12" W
	3+49	58' LT.	* CL FIRE HYDRANT
	3+50	17' LT.	12" x 6" FHT
	4+00	18' LT.	12" W
PATAPSCO VALLEY DRIVE	4+84	18' LT.	15" SD CROSSING
	5+05.35	18' LT.	12" x 12" C
PATAPSCO VALLEY DRIVE	5+42.35	18' LT.	6" CAP & BUTTRESS
	8+43	7' LT.	12" PLUG & BUTTRESS
STONEHOUSE DRIVE	10+75	7' LT.	12" x 6" FHT
	10+75	16.7' RT.	* CL FIRE HYDRANT
	11+00	7' LT.	12" W
	12+00	7' LT.	12" W
	13+00	7' LT.	12" W
	13+70	7' LT.	12" x 8" C
	13+70	30' LT.	8" V w/8" P & BUTTRESS
	13+70	30' RT.	6" CAP & BUTTRESS
	13+78	24' LT.	** CL FIRE HYDRANT
	13+87	7' LT.	30" SD CROSSING
STONEHOUSE DRIVE	14+78	7' LT.	12" PLUG & BUTTRESS

* SET F.H. 3'-0" IN BACK OF BACK OF CURB.
 ** SET F.H. 2'-0" IN BACK OF BACK OF SIDEWALK

PLAN SCALE
 1" = 50'

ORCHARD AVENUE

ROGERS AVENUE

PATAPSCO VALLEY DRIVE

STONEHOUSE DRIVE

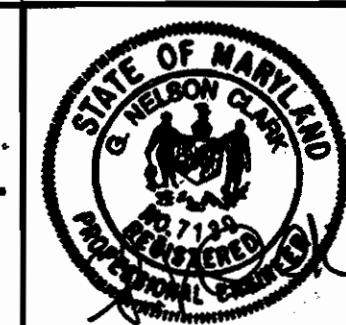
PARCEL 'A'

NORTHERN ELEMENTARY SCHOOL NO. 3

DEPARTMENT OF PUBLIC WORKS
 HOWARD COUNTY, MARYLAND
 2-7-96

DEPARTMENT OF PLANNING & ZONING
 HOWARD COUNTY, MARYLAND
 2/9/96

CFE CLARK · FINEPROCK & SACKETT, INC.
 ENGINEERS · PLANNERS · SURVEYORS
 7135 MINSTREL WAY COLUMBIA MARYLAND 21045
 (410) 381-7500 BALTO. (301) 621-8100 WASH.



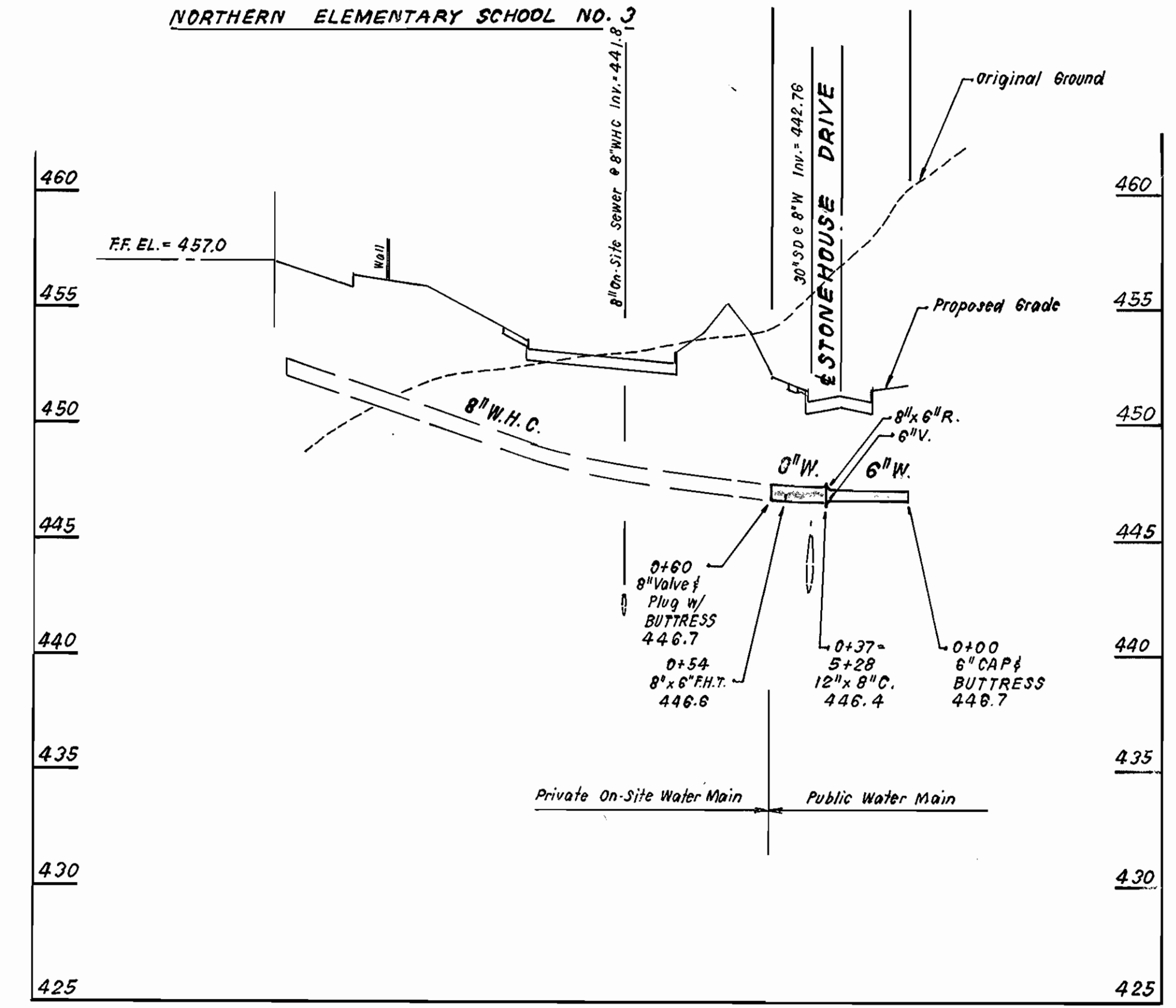
DES: JTR
 DRN: LAI / JTR
 CHK: CM
 DATE: JUL., 95

PLAN VIEW OF
 WATER MAINS
 600' SCALE MAP NO. 17 BLOCK NO. 12

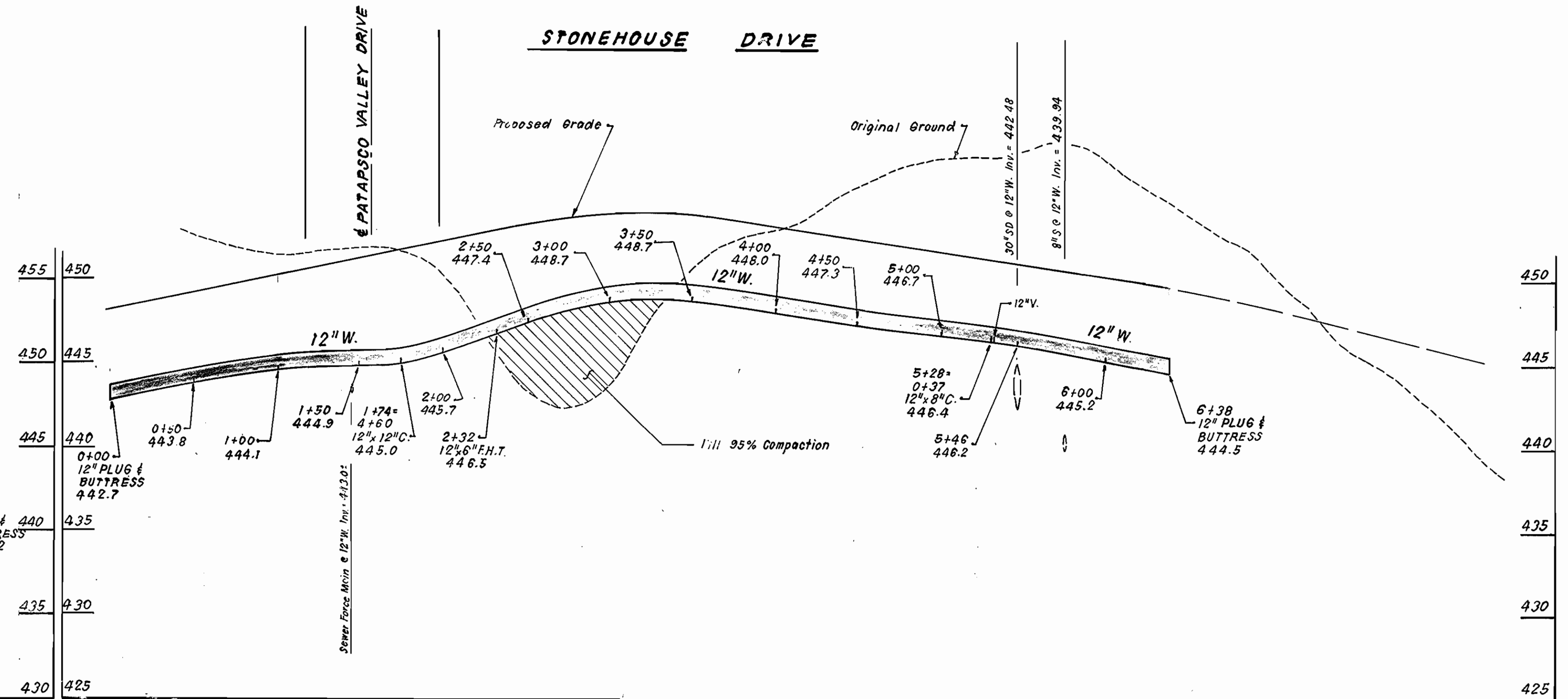
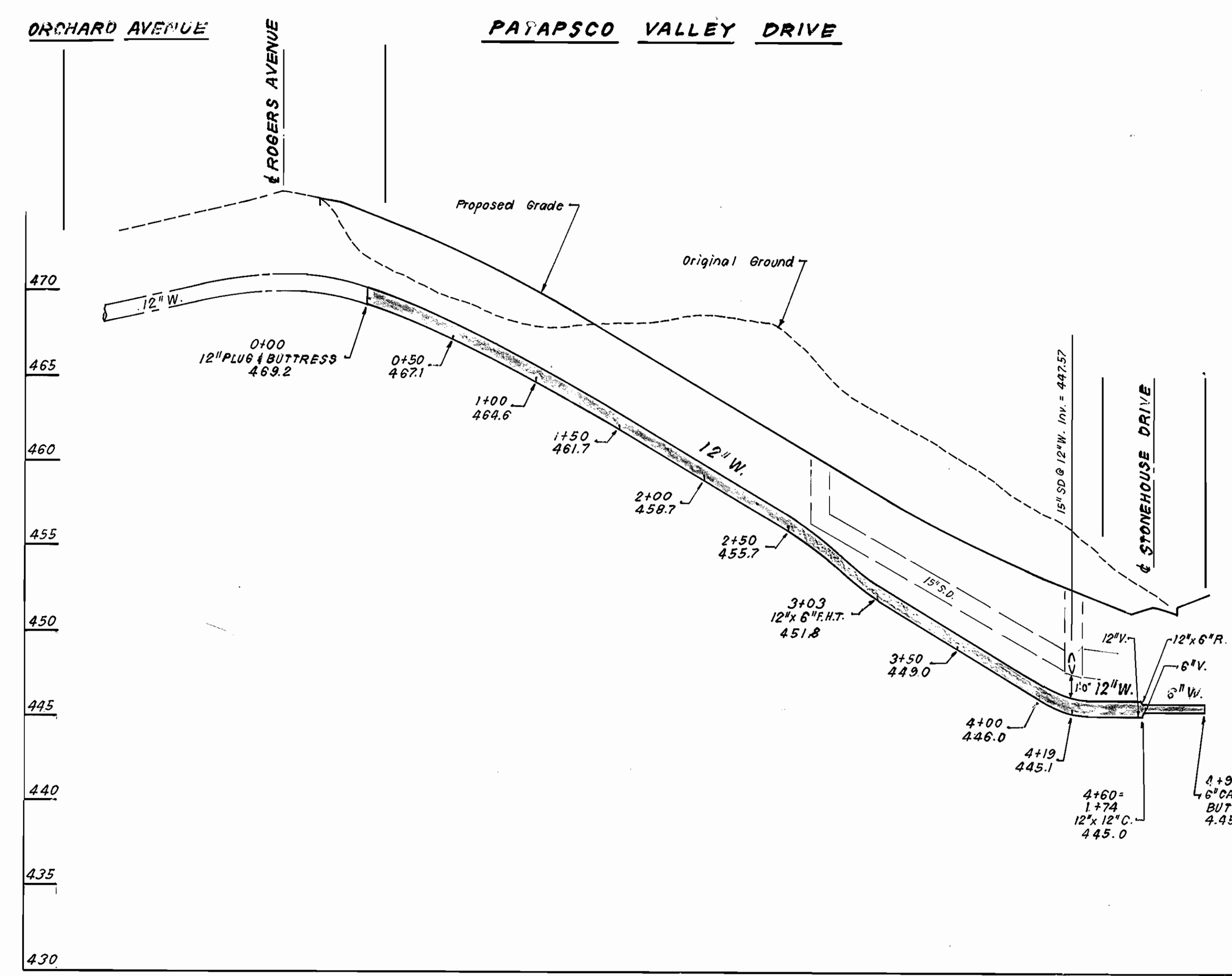
DANIELS MILL OVERLOOK
 LOTS 1 THRU 3 AND PARCEL "A"
 2ND ELECTION DISTRICT
 HOWARD COUNTY, MARYLAND
 CONTRACT No 44-3487-D
 SCALE AS SHOWN
 SHEET 2 OF 3

40-BULLTS 4/4/07

NORTHERN ELEMENTARY SCHOOL NO. 3



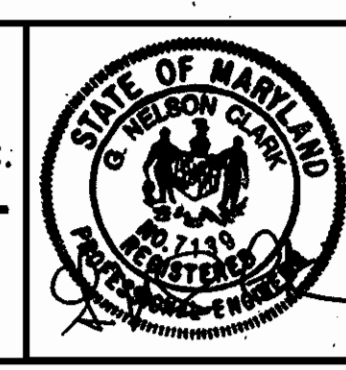
PROFILE SCALE
HORIZONTAL: 1"=50'
VERTICAL: 1"=5'



DEPARTMENT OF PUBLIC WORKS
HOWARD COUNTY, MARYLAND
2-7-96

DEPARTMENT OF PLANNING & ZONING
HOWARD COUNTY, MARYLAND
2/7/96

CLARK • FINEPROCK & SACKETT, INC.
ENGINEERS • PLANNERS • SURVEYORS
7135 MINSTREL WAY COLUMBIA MARYLAND 21045
(410) 381-7500 BALTO. (301) 821-8100 WASH.



DES: JTR
DRN: JTR
CHK: CM
DATE: JUL., 95

PROFILE VIEW OF
WATER MAINS

NORTHERN ELEMENTARY SCHOOL NO. 3
DANIELS MILL OVERLOOK
LOTS 1 THRU 3 AND PARCEL "A"
2ND ELECTION DISTRICT
HOWARD COUNTY, MARYLAND
CONTRACT No. 44-3487-D

SCALE
AS SHOWN
SHEET
3 OF 3