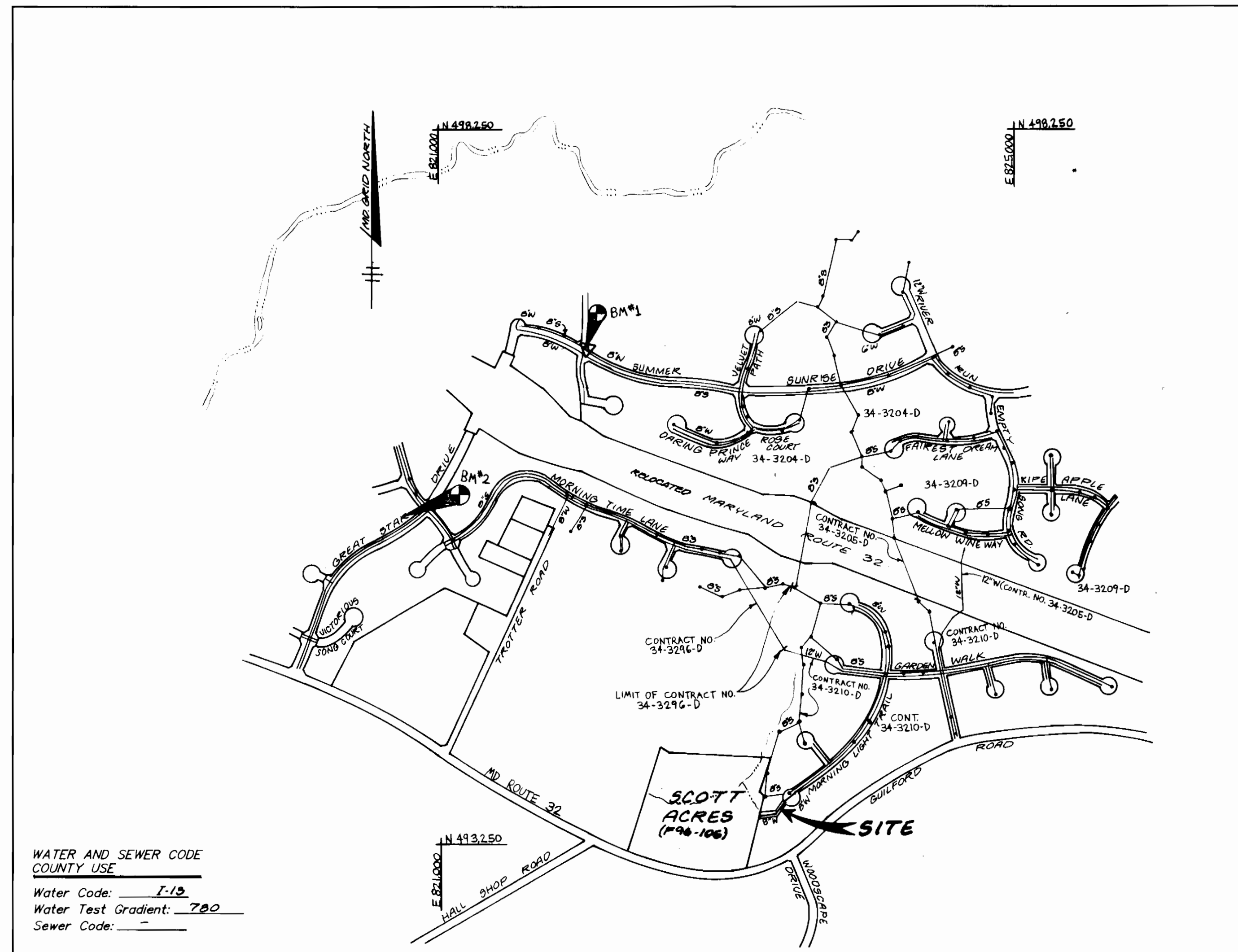


**BENCH MARKS:**

BM\*1 - RAILROAD SPIKE IN POLE # 525680  
(TROTTER ROAD) ELEV. 438.27  
N 496497.02  
E 822026.81

BM\*2 - SPIKE IN POPLAR, ELEV. 438.92  
N 495551.90  
E 820727.80



WATER AND SEWER CODE  
COUNTY USE

Water Code: 7-13  
Water Test Gradient: 780  
Sewer Code: -

Type of Buildings: RESIDENTIAL - SFLD  
Number of Lots/Parcels: N/A  
Number of W.H.C.'S: N/A  
Number of S.H.C.'S: N/A  
Drainage Area: MIDDLE PATUXENT  
Treatment Plant: LITTLE PATUXENT

VICINITY MAP  
Scale: 1"=600'

WATER CONSTRUCTION PLANS  
VILLAGE OF RIVER HILL  
SECTION TWO AREA TWO  
PHASE 2 LOTS 22 & 23

5th ELECTION DISTRICT HOWARD COUNTY, MARYLAND

CONTRACT NO. 44-3466-D

INDEX OF SHEETS	
SHEET NO.	TITLE
1	COVER SHEET
2	PLAN & PROFILE
3	SEDIMENT AND EROSION CONTROL PLAN

General Notes

PART I

- Approximate location of existing mains are shown. The Contractor shall take all necessary precautions to protect existing mains and services and maintain uninterrupted supply. Any damage incurred shall be repaired immediately to the satisfaction of the Engineer at the Contractor's expense.
- All horizontal controls are based on Maryland State Coordinates.
- All vertical controls are based on U.S.G.S. data.
- All pipe elevations shown are invert elevations.
- Clear all utilities by a minimum of 6". Clear all poles by 2'0" minimum or tunnel as required. The owner has contacted the utility companies and has made arrangements for bracing of poles as shown on the drawings. In the event the contractor's work requires the bracing of additional poles, any cost incurred by the Owner for bracing of additional poles or damages shall be deducted from money owned the Contractor. The Contractor shall coordinate with the utility companies to schedule the bracing of the poles.
- For details not shown on the drawings and for materials and construction methods, use Howard County Design Manual, Volume IV, Standard Specifications and Details for Construction (latest edition). The Contractor shall have a copy of Volume IV on the job.
- Where test pits have been made on existing utilities, they are noted by the symbol  $\square$  at the location of the test pit. A note or notes containing the results of the test pit or pits is included on the drawings. Existing utilities in the vicinity of the proposed work for which test pits have not been dug shall be located by the Contractor two weeks in advance of construction operations at his own expense.
- Contractor shall notify the following utility companies or agencies at least five (5) working days before starting work shown on these plans:
  - SHA: 531-5533
  - BGE (Contractor Services): 850-4620
  - BGE (Underground damage control): 787-9068
  - Miss Utility: 1-800-257-7777
  - Colonial Pipeline Company: 795-1390
  - Howard County Dept. of Public Works, Bureau of Utilities: 313-4900
- Trees and shrubs are to be protected from damage to maximum extent. Trees and shrubs within the construction strip are not to be removed or damaged by the Contractor.
- Contractor shall remove trees, stumps and roots along line of excavation. Payment for such removal shall be included in the unit price bid for construction of the main.

PART II: WATER

- All water mains to be D.I.P. Class 52 unless otherwise noted.
- Tops of all water mains to have a minimum of 3' 1/2" cover unless otherwise noted.
- Valves adjacent to the tees shall be strapped to the tees.
- All fittings shall be buttressed or anchored with concrete in accordance with the Standard Details unless otherwise provided for on the drawings.
- Fire hydrants shall be set to the bury line elevations shown on the drawings. All fire hydrants shall be strapped and buttressed with concrete in accordance with the Standard Details. Soil around the fire hydrant shall be compacted in accordance with Section 1000 and 1005 of the Standard Specifications.
- The Contractor shall not operate any water main valves on the existing water system.
- All water house connections shall be for inside meter setting unless otherwise noted on plans or in specifications.

QUANTITIES				
AS BUILT OCT. 25, 1996				
ITEM	QUANTITIES ESTIMATED	QUANTITIES	TYPE	MANUFACTURER/SUPPLIER
8" D.I.P. WATER MAIN	272 L.F.	272 L.F.	8" D.I.P.	ATLANTIC STATES
1/4" HORIZ. BEND	2 EA.	2 EA.	N/A	
1/8" HORIZ. BEND	2 EA.	2 EA.	8" MET. BENT	UNION FOUNDRY
8" PLUG & BUTTRESS	2 EA.	2 EA.	N/A	
3/4" W.H.C.	1 EA.	1 EA.	N/A	
1" W.H.C.	3 EA.	3 EA.	N/A	
8" VALVE	1 EA.	1 EA.	8" RES. WEDGE GATE	MUELLER CO.
AIR RELEASE MANHOLE	1 EA.	1 EA.		ATLANTIC CONCRETE
NAME OF UTILITY CONTRACTOR:			CHECK BOX: SURVEY & DRAFTING DIVISION AS BUILT DATE:	

SEE SHEET 3 OF 3 FOR SEDIMENT AND EROSION CONTROL PLAN.

REVIEWED FOR HOWARD SOIL CONSERVATION DISTRICT AND MEET TECHNICAL REQUIREMENTS.

*[Signature]*  
NATURAL RESOURCES CONSERVATION SERVICE

THIS DEVELOPMENT PLAN IS APPROVED FOR SOIL EROSION AND SEDIMENT CONTROL BY THE HOWARD COUNTY SOIL CONSERVATION DISTRICT.

HOWARD SOIL CONSERVATION DISTRICT \_\_\_\_\_ DATE \_\_\_\_\_

SEDIMENT CONTROL MEASURES FOR THIS CONTRACT WILL BE IMPLEMENTED IN ACCORDANCE WITH SECTION 219 OF THE STANDARD SPECIFICATION.

DEPARTMENT OF PUBLIC WORKS

*[Signature]* 8/10/96  
CHIEF, BUREAU OF UTILITIES

DEPARTMENT OF PLANNING & ZONING

*[Signature]* *[Signature]*  
CHIEF-DEVELOPMENT ENGINEERING DIVISION

LDE, INC.  
9250 RUMSEY ROAD, SUITE 106  
COLUMBIA, MARYLAND 21045  
(410) 715-1070 (301) 596-3424



DESIGNED	SDH	DATE	BY	NO.	REVISION	DATE
DRAWN	SD					
CHECKED	BDB					
DATE	9/95					

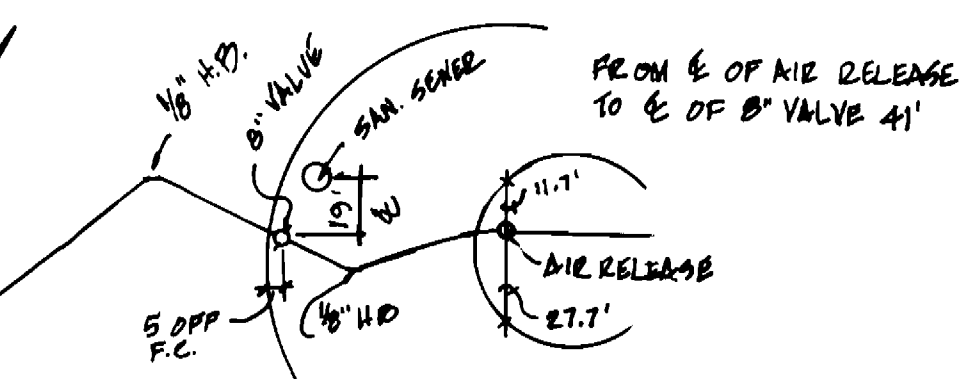
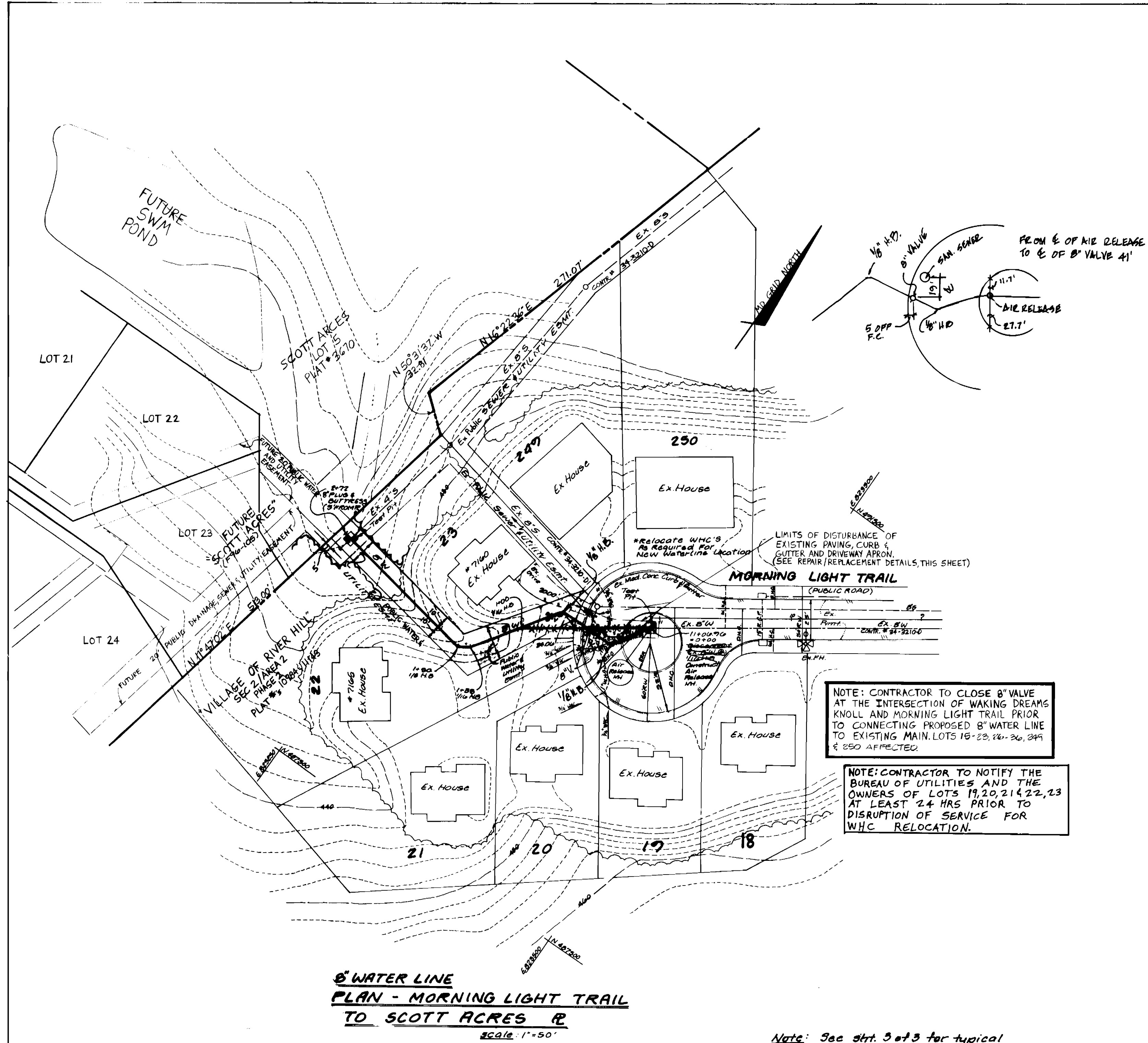
WATERLINE EXTENSION TO SCOTT ACRES  
TITLE SHEET

600 SCALE MAP NO. 35 BLOCK 14

VILLAGE OF RIVER HILL  
SECTION TWO AREA TWO  
PHASE 2  
LOTS 22 & 23  
5th ELECTION DISTRICT HOWARD COUNTY, MARYLAND  
CONTRACT NO. 44-3466-D

SCALE AS SHOWN  
SHEET 1 OF 3

AS-BUILTS 4/1/97

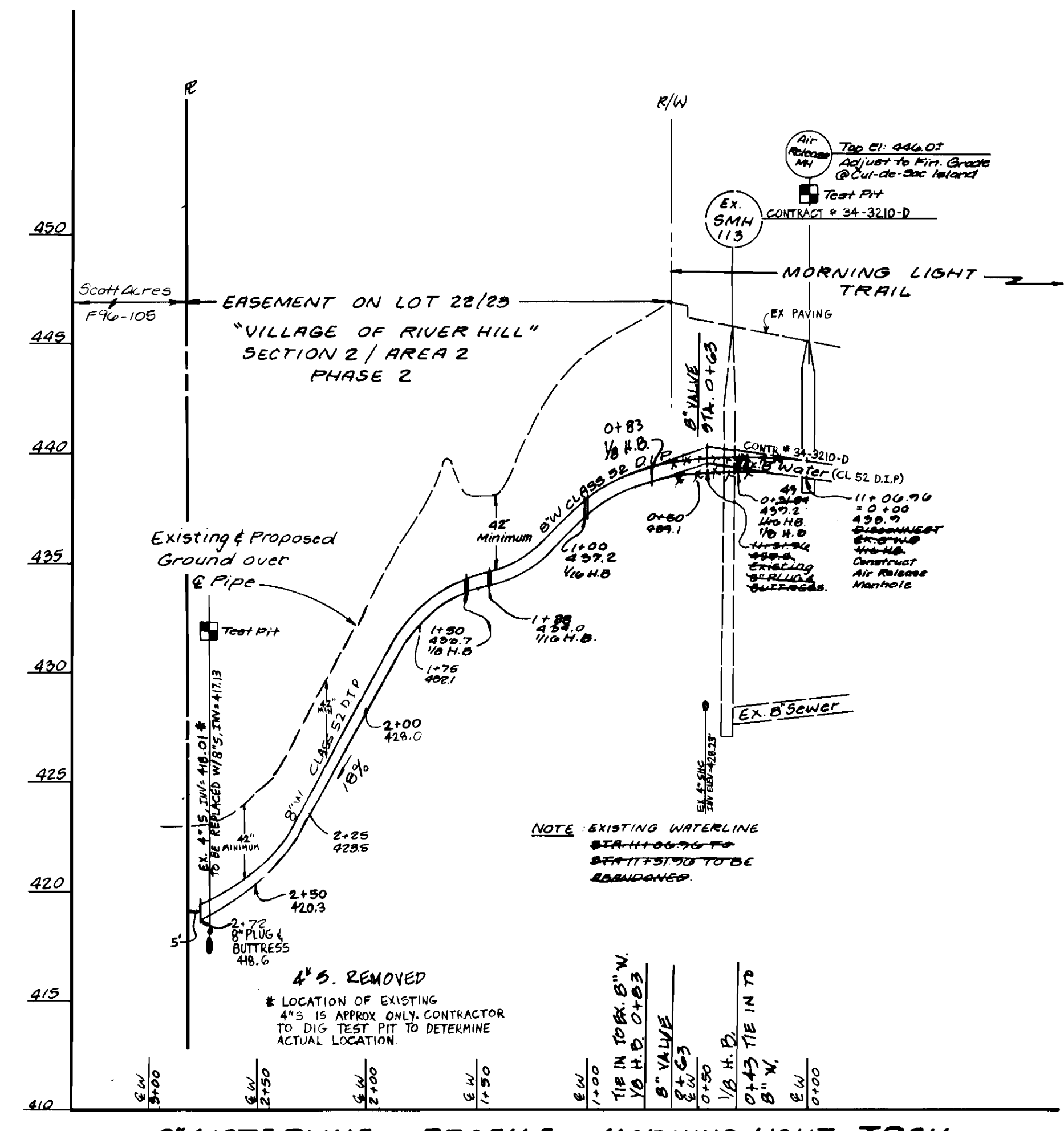


NOTE: CONTRACTOR TO CLOSE 8" VALVE AT THE INTERSECTION OF WAKING DREAMS KNOLL AND MORNING LIGHT TRAIL PRIOR TO CONNECTING PROPOSED 8" WATER LINE TO EXISTING MAIN. LOTS 18-23, 26-28, 34 & 350 AFFECTED.

NOTE: CONTRACTOR TO NOTIFY THE BUREAU OF UTILITIES AND THE OWNERS OF LOTS 19, 20, 21 & 22, 23 AT LEAST 24 HRS PRIOR TO DISRUPTION OF SERVICE FOR W.H.C. RELOCATION.

**6" WATER LINE PLAN - MORNING LIGHT TRAIL TO SCOTT ACRES R**  
Scale: 1" = 50'

Note: See str. 3 of 3 for typical details and paving section for restoration and repair within public R/W of Morning Light Trail.



**6" WATERLINE PROFILE - MORNING LIGHT TRAIL TO SCOTT ACRES R**  
Scale: Horiz 1" = 50'  
Vert. 1" = 5'

SEDIMENT CONTROL MEASURES FOR THIS CONTRACT WILL BE IMPLEMENTED IN ACCORDANCE WITH SECTION 219 OF THE STANDARD SPECIFICATION.

DEPARTMENT OF PUBLIC WORKS DEPARTMENT OF PLANNING & ZONING J. K. Wilby Jr. 8/13/96 CHIEF BUREAU OF UTILITIES / DATE	LDE, INC. 9250 RUMSEY ROAD, SUITE 106 COLUMBIA, MARYLAND 21045 (410) 715-1070 (301) 596-3424		DESIGNED SDH		WATERLINE EXTENSION TO SCOTT ACRES PLAN AND PROFILE	VILLAGE OF RIVER HILL SECTION TWO - AREA TWO - PHASE TWO LOTS 22 & 23 5th ELECTION DISTRICT HOWARD COUNTY, MARYLAND Contract No 44-3466-D	SCALE As Shown SHEET 2 of 3
			DRAWN SD CHECKED BDB DATE 9/95	BY NO. _____ REVISION _____ DATE _____			

KS-BHITS 4/4/07

