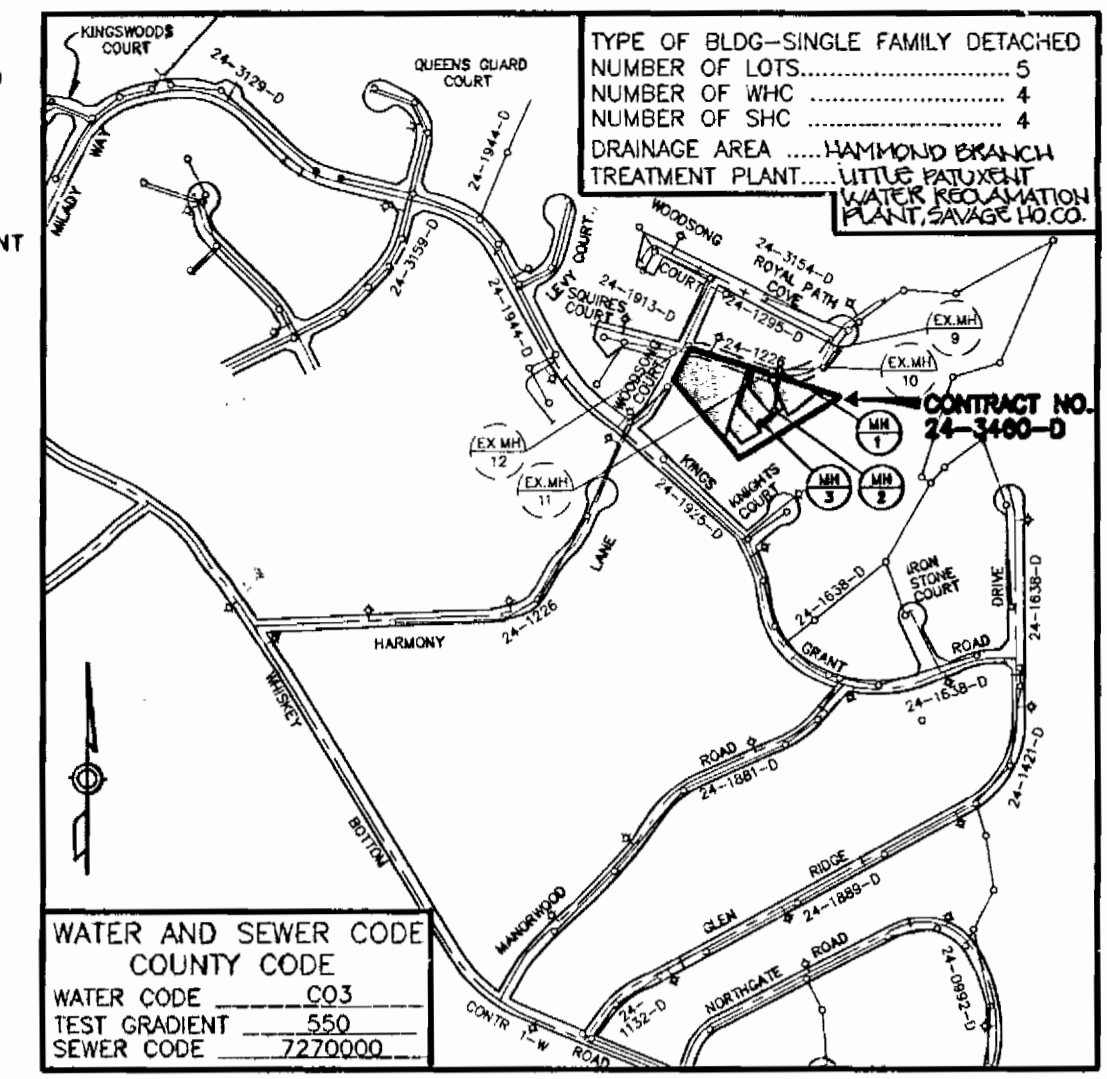


3460 WS/1 ALFRED HALL PROP. (lots 1-6)

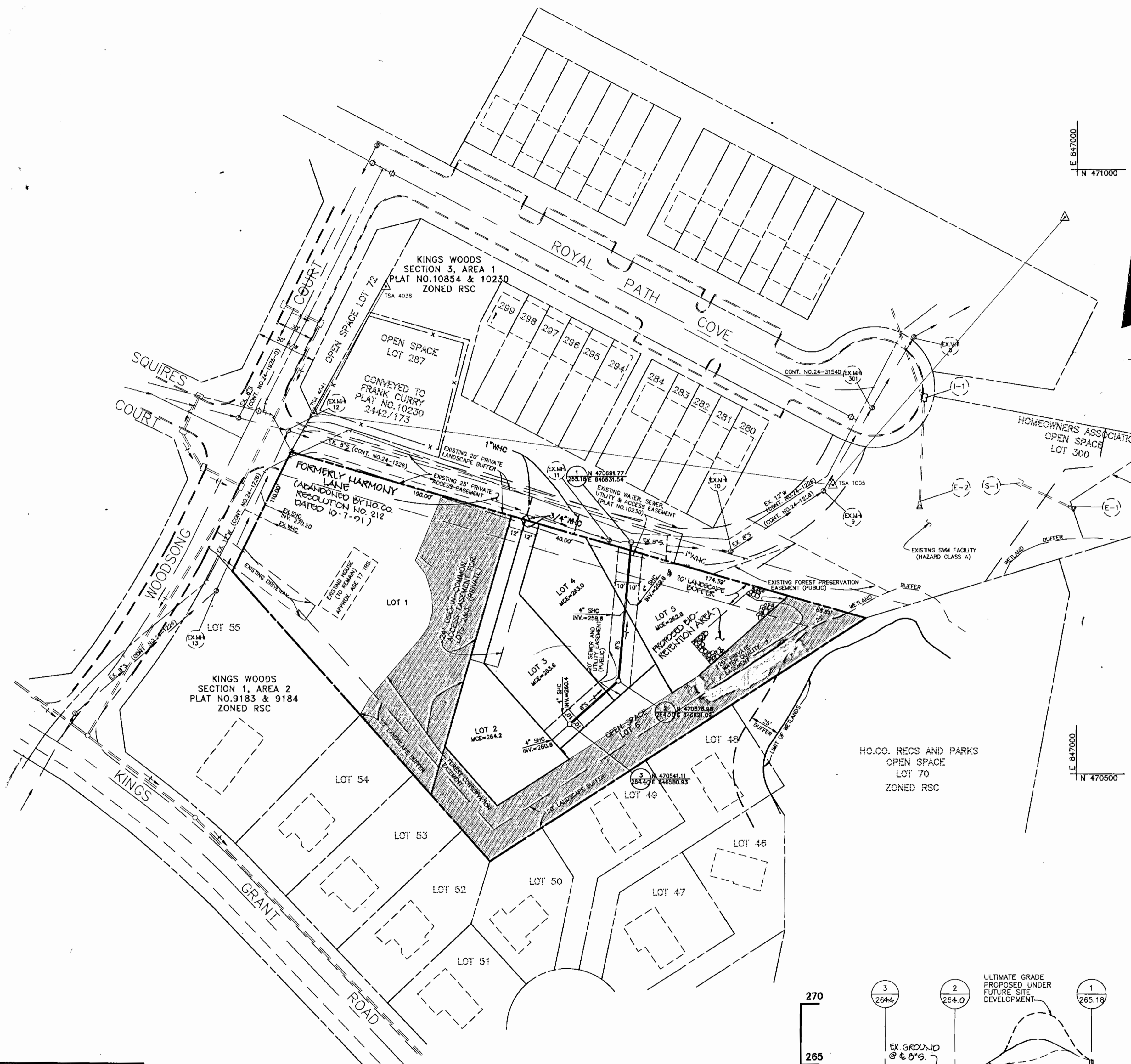
BENCH MARKS (NAD 27)
 HQ.CO. #1941004 ELEV. 295.392
 REBAR 3"± OF SOUTH EDGE OF WHISKEY BOTTOM ROAD
 NEAR THE INTERSECTION OF STEPHENS ROAD
 N 471079.018 E 843557.878
 HQ.CO. #1941001 ELEV. 277.873
 REBAR 4"± WEST OF EDGE OF STEPHENS ROAD IN FRONT
 OF HOUSE NO.8820 0.3' BELOW SURFACE
 N 472223.19 E 843797.549



WATER & SEWER AS-BUILT PULLS

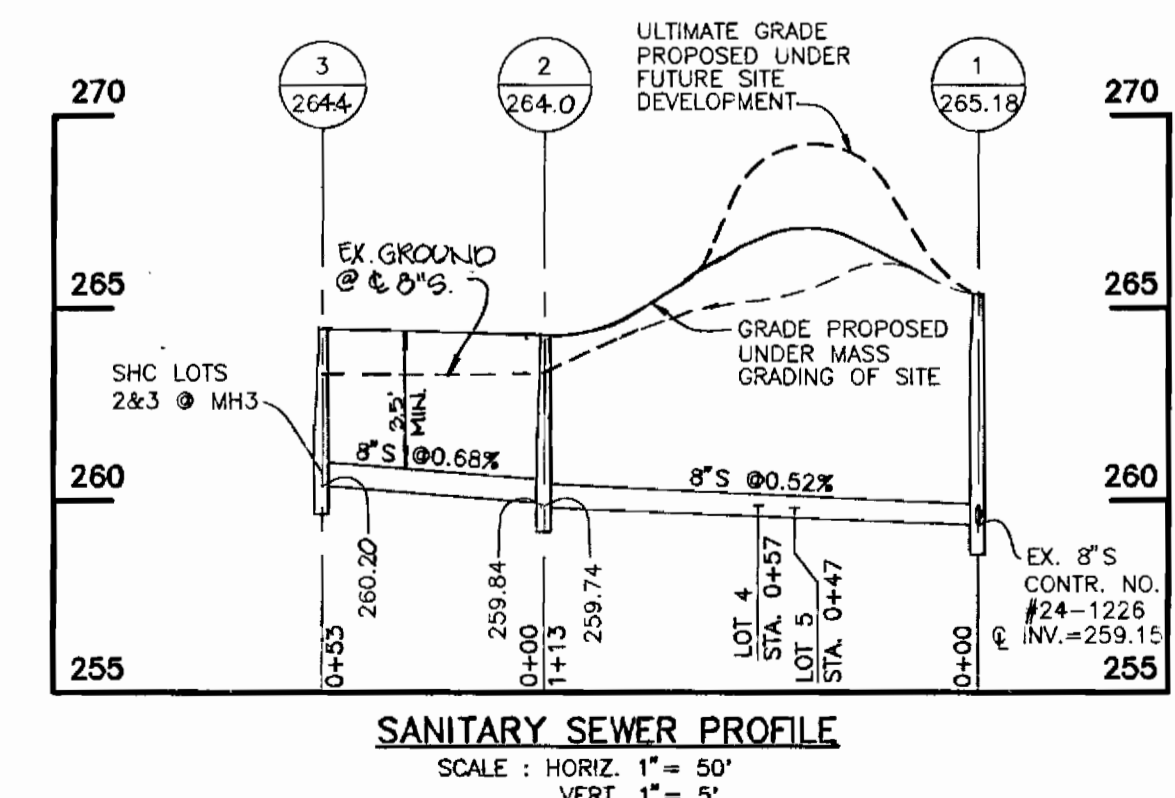
FROM:	TO:	DIST:
MH-1	LOT 5	44'
MH-1	LOT 4	53'
MH-2	LOT 5	70'
MH-2	LOT 4	62'
MH-2	LOT 3	54'
MH-2	LOT 2	74'
MH-3	LOT 2	20'
MH-3	LOT 3	9'

WATER	TO:	DIST:
MH-1	LOT 5	28'
MH-1	LOT 4	49'
MH-1	LOT 3	89'
MH-1	LOT 2	94'
EX-MH-11	LOT 5	45'
EX-MH-11	LOT 4	33'
EX-MH-11	LOT 3	71'
EX-MH-11	LOT 2	78'

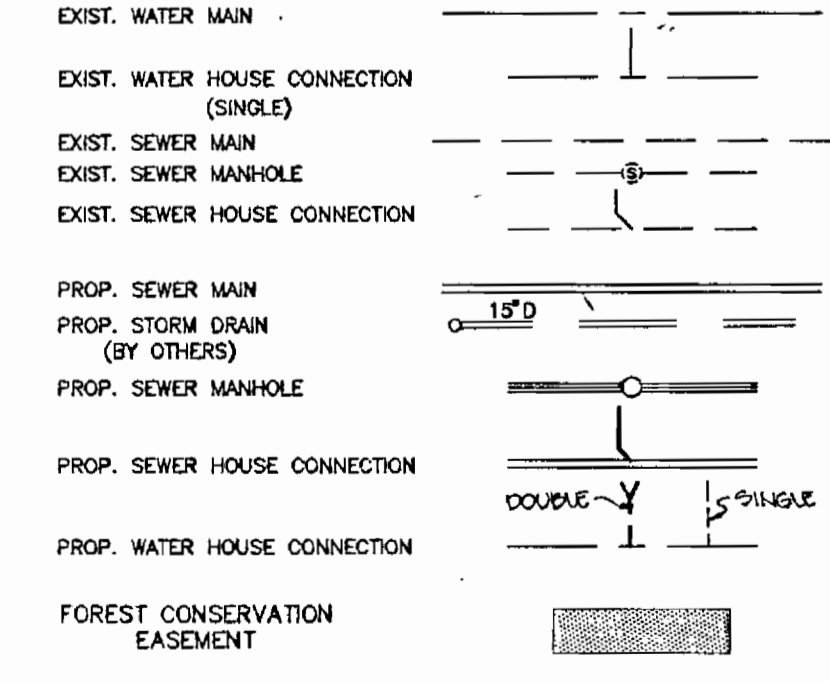


GENERAL NOTES CONTINUED...

- PART II - WATER**
- ALL WATER MAINS TO BE D.I.P. CLASS 52 UNLESS OTHERWISE NOTED.
 - TOPS OF ALL WATER MAINS TO HAVE A MINIMUM OF 3'-1 1/2" COVER UNLESS OTHERWISE NOTED.
 - VALVES ADJACENT TO TEES SHALL BE STRAPPED TO TEES.
 - ALL FITTINGS SHALL BE BUTTRESSED OR ANCHORED WITH CONCRETE IN ACCORDANCE WITH THE STANDARD DETAILS UNLESS OTHERWISE PROVIDED FOR ON THE DRAWINGS.
 - FIRE HYDRANTS SHALL BE SET TO THE BURY LINE ELEVATIONS SHOWN ON THE DRAWINGS. ALL FIRE HYDRANTS SHALL BE STRAPPED AND BUTTRESSED WITH CONCRETE IN ACCORDANCE WITH STANDARD DETAILS. SOIL AROUND THE FIRE HYDRANT SHALL BE COMPACTED IN ACCORDANCE WITH SECTION 1000 AND 1005 OF THE STANDARD SPECIFICATIONS. THE CONTRACTOR SHALL NOT OPERATE ANY WATER MAIN VALVES ON THE EXISTING WATER SYSTEM.
 - ALL WATER HOUSE CONNECTIONS SHALL BE FOR INSIDE METER SETTING UNLESS OTHERWISE NOTED ON PLANS OR IN SPECIFICATIONS.
- PART III - SEWER**
- ALL SEWER MAINS SHALL BE DIP OR PVC, UNLESS OTHERWISE NOTED.
 - ALL MANHOLES SHALL BE 4' - 0" INSIDE DIAMETER UNLESS OTHERWISE NOTED.
 - FORCE MAINS SHALL BE 12" AND 16" WALLS ARE FOR BRICK MANHOLES ONLY.
 - MANHOLES SHOWN WITH 12" AND 16" WALLS ARE FOR BRICK MANHOLES ONLY.
 - MANHOLES DESIGNATED W.T. IN PLAN AND PROFILE SHALL HAVE WATER-TIGHT FRAME AND COVERS, STANDARD DETAIL 65.52, WHERE WATER-TIGHT MANHOLE FRAME AND COVER IS USED. SET TOP OF FRAME 1' - 6" ABOVE FINISHED GRADE UNLESS OTHERWISE NOTED ON THE DRAWINGS.
 - HOUSE(S) WITH THE SYMBOL "C.M.S." INDICATES THAT CELLAR CANNOT BE SERVED.
 - ALL SHC'S SHALL BE SET AT 2X TO THE PROPERTY LINE UNLESS OTHERWISE NOTED.



LEGEND



HOWARD SOIL CONSERVATION DISTRICT:
 REVIEWED FOR HOWARD SOIL CONSERVATION DISTRICT AND MEETS TECHNICAL REQUIREMENTS

J. H. Washburn 5/13/26
 NATURE RESOURCE PRESERVATION DATE

THIS PLAN IS APPROVED FOR SOIL CONSERVATION AND SEDIMENT CONTROL BY THE HOWARD SOIL CONSERVATION DISTRICT.

John R. Roberts 5/13/26
 HOWARD SOIL CONSERVATION DISTRICT DATE

QUANTITIES

ITEM	QUANTITIES ESTIMATED	QUANTITIES AS BUILT	TYPE	MANUFACTURER/SUPPLIER
3/4" WHC	10 LF	14 LF	"K"	CAMBRIDGE LBS./WATERPRO
1" WHC	50 LF	34 LF	"K"	"
8" SEWER	166 LF	166 LF	SDR35	JM MANUFACTURING/WATERPRO
MANHOLES	3	3EA	CONCRETE	ATLANTIC CONCRETE
4" SHC	50 LF	49 LF	SDR35	JM MANUFACTURING/WATERPRO

NAME OF UTILITY CONTRACTOR UTILITIES UNLIMITED INC.
 SURVEY AND DRAFTING DIVISION ASBUILT DATE MARCH 24, 1998

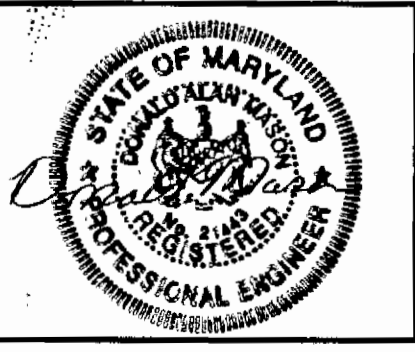
DEPARTMENT OF PUBLIC WORKS
 HOWARD COUNTY, MARYLAND

Robert S. ... 5-3-98
 CHIEF, BUREAU OF UTILITIES DATE

DEPARTMENT OF PLANNING AND ZONING
 HOWARD COUNTY, MARYLAND

...
 CHIEF, DEVELOPMENT ENGINEERING DIVISION DATE

T.S.A. GROUP INC.
 planning • engineering • surveying
 8480 Baltimore National Pike • Suite 418
 Ellicott City, Maryland 21043



DES: GWF
 DRN: JR
 CHK: DAM
 DATE: KCI 1

ASBUILT CONDITIONS SHOWN ON PLAN W/5 9/99

BY NO. REVISIONS DATE

PLAN AND PROFILE OF WATER & SEWER MAINS

600 SCALE MAP NO. 47 BLOCK NO. 22

ALFRED HALL PROPERTY
 LOTS 1 - 6

ELECTION DISTRICT NO. 6
CONTRACT NO. 24-3460-D

SCALE: AS SHOWN
 SHEET 1 OF 1

Plotted: Dec. 14, 1995
 Acad. Dwg: 709351