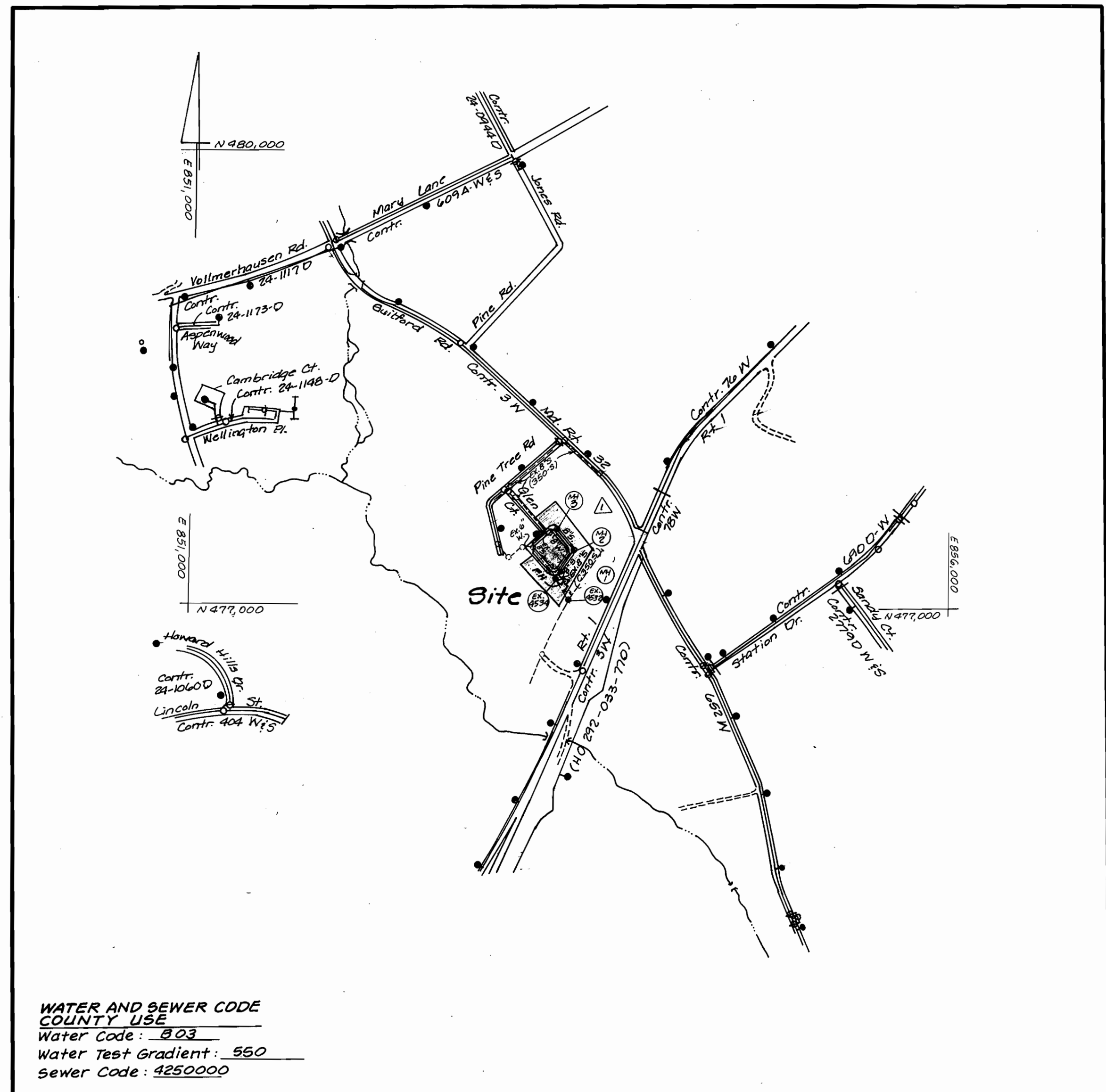


GENERAL NOTES

BENCH MARKS:

- RAILROAD SPIKE IN ROOT OF 12" MAPLE ON LOT 16 - ELEV: 196.94

SEWER AS-BUILTS				WATER AS-BUILTS			
LOT NO.	FROM	TO	DIST.	LOT NO.	FROM	TO	DIST.
12	EX. MH 4534	SAN. BOARD	120'	12	EX. MH 4535	C.G. BOX	075'
12	FIRE HYDRANT	"	139'	12	F.H.	"	108'
13	EX. MH 4534	"	44'	13	EX. MH 4535	"	65'
13	FIRE HYDRANT	"	63'	13	F.H.	"	79'
14	EX. MH 4534	"	25'	14	EX. MH 4535	"	20'
14	FIRE HYDRANT	"	48'	14	F.H.	"	51'
15	EX. MH 4534	"	63'	15	EX. MH 4535	"	15'
15	FIRE HYDRANT	"	73'	15	F.H.	"	40'
16	EX. MH 4534	"	63'	16	EX. MH 4535	"	19'
16	FIRE HYDRANT	"	65'	16	F.H.	"	5'
17	MH-1	"	30'	17	MH-1	"	13'
17	F.H.	"	16'	17	F.H.	"	23'
18	MH-1	"	24'	18	MH-1	"	35'
18	F.H.	"	61'	18	F.H.	"	72'
19	MH-1	"	70'	19	MH-1	"	84'
19	MH-2	"	67'	19	" 2	"	51'
20	MH-1	"	118'	20	" 1	"	128'
20	MH-2	"	20'	20	" 2	"	11'
21	MH-1	"	156'	21	" 1	"	165'
21	MH-2	"	29'	21	" 2	"	37'
22	"	"	62'	22	"	"	73'
22	" 3	"	150'	22	" 3	"	130'
23	" 2	"	112'	23	" 2	"	125'
23	" 3	"	101'	23	" 3	"	90'
25	"	"	11'	24	" 3	"	12'
25	EX. MH 4536	"	79'	24	EX. MH 4536	"	81'
24	MH-3	"	51'	25	MH-3	"	43'
24	EX. MH 4536	"	103'	25	EX. MH 4536	"	96'
26	MH-3	"	33'	26	MH-3	"	39'
26	EX. MH 4536	"	55'	26	EX. MH 4536	"	51'
35	"	"	"	35	" 4534	"	66'
35	"	"	"	35	MH-1	"	31'
36	MH-1	"	30'	36	"	"	38'
36	" 2	"	112'	36	" 2	"	101'
37	" 1	"	75'	37	" 1	"	89'
37	" 2	"	63'	37	" 2	"	50'
6" FIRE HYDRANT	F.H.	6" VALVE	25'	6" F.H. VALVE	EX. MH 4534	6" VALVE	30'
MANHOLE DEPT. 27	EX. F.H.	SAN. BOARD	45'				
MANHOLE DEPT. 27	EX. MH 4536	"	90'				



WATER AND SEWER CODE
 COUNTY USE
 Water Code: 803
 Water Test Gradient: 550
 Sewer Code: 4250000

VICINITY MAP
 SCALE: 1" = 600'

Type of Building:	Single Family Detached
Number of Lots/Parcels:	20
Number of W.H.C.'s:	10
Number of S.H.C.'s:	10
Drainage Area:	Middle Permeant
Treatment Plant:	Sewage Waste Water Treatment Plant

PART I:

- Approximate location of existing mains are shown. The contractor shall take all necessary precautions to protect existing mains and services and maintain uninterrupted supply. Any damage incurred shall be repaired immediately to the satisfaction of the Engineer at the Contractor's expense.
- All horizontal controls are based on Maryland State Coordinates.
- All vertical controls are based on U.S.G.S. data.
- All pipe elevations shown are invert elevations.
- Clear all utilities by a minimum of 6". Clear all poles by 2'-0" minimum or tunnel as required. The owner has contacted the Utility Companies and has made arrangements for bracing of poles as shown on the drawings. In the event the contractor's work requires the bracing of additional poles, any cost incurred by the owner for bracing of additional poles or damages shall be deducted from money owed the contractor. The contractor shall coordinate with the Utility Companies to schedule the bracing of the poles.
- For details not shown on the drawings and for materials and construction methods use Howard County Design Manual, Volume IV, Standard Specifications and Details for Construction (Latest Edition). The contractor shall have a copy of Volume IV on the job.
- Where test pits have been made on existing utilities, they are noted by the symbol \odot at the location of the test pit. A note or notes containing the results of the test pit or pits is included on the drawings. Existing utilities in the vicinity of the proposed work for which test pits have not been dug shall be located by the contractor two weeks in advance of construction operations at his own expense.
- Contractor shall notify the following Utility Companies or agencies at least five working days before starting work shown on these plans:
 - State Highway Administration 531-5533
 - Baltimore Gas & Electric Company Contractor Services 850-4620
 - Baltimore Gas & Electric Company Under Ground Damage Control 787-9068
 - Miss Utility 1-800-257-7777
 - Colonial Pipeline Company 795-1390
 - Howard County Dept. of Public Works Bureau of Utilities 313-4900
- Trees and shrubs are to be protected from damage to maximum extent. Trees and shrubs located within the construction strip are not to be removed or damaged by the contractor.
- Contractor shall remove trees, stumps and roots along line of excavation. Payment for such removal shall be included in the unit price bid for construction of the main.

PART II - WATER:

- All water mains to be D.I.P. Class 52 unless otherwise noted.
- Tops of all water mains to have a minimum of 3 1/2' cover unless otherwise noted.
- Valves adjacent to tees shall be strapped to tees.
- All fittings shall be buttressed or anchored with concrete in accordance with the Standard Details unless otherwise provided for on the drawings.
- Fire hydrants shall be set to the bury line elevations shown on the drawings. All fire hydrants shall be strapped and buttressed with concrete in accordance with Standard Details. Soil around the fire hydrant shall be compacted in accordance with Section 1000 and 1005 of the Standard Specifications.
- The contractor shall not operate any water main valves on the existing water system.
- All water house connections shall be for inside meter setting unless otherwise noted on plans or in specifications.

PART III - SEWER:

- All sewer mains to be D.I.P. and P.C.V. unless otherwise noted.
- The contractor shall provide a joint in all sewer mains within 2'-0" of exterior manhole wall.
- All manholes shall be 4'-0" inside diameter unless otherwise noted.
- Force mains shall be D.I.P. only.
- Manholes designated W.T. in plan and profile shall have watertight frame and covers; Standard Detail G5.52. Where water tight manhole frame and cover is used, set top of frame 1'-6" above finished grade unless otherwise noted on the drawings.
- House(s) with the symbol "C.N.S." indicates that cellar cannot be served.
- Manholes shown with 12" and 16" walls are for brick manholes only.
- The Contractor shall T.V. the existing sewer main and provide tape to the Bureau of Utilities prior to tapping the existing sewer main.

ITEM	QUANTITIES ESTIMATED	AS BUILT		
		QUANTITIES	TYPE	MANUFACTURER/SUPPLIER
8" Water	683 L.F.	595 L.F.	D.I.P.	GRIFFIN PIPE CO.
6" Water	28 L.F.	52 L.F.	D.I.P.	GRIFFIN PIPE CO.
6" Valve	1 Ea.	1 EA.	CAST IRON/GATE VALVE	MUELLER CO.
Fire Hydrant	1 Ea.	1 EA.	CAST IRON	MUELLER CO.
8" x 6" FH Tee	1 Ea.	1 EA.	D.I.P.	GRIFFIN PIPE CO.
3/4" WHC	286 L.F.	421 L.F.	K-COPPER	HOWELL METALS
6" x 8" Increaser	1 Ea.	1 EA.	D.I.P.	GRIFFIN PIPE CO.
45" HB	5 Ea.	5 EA.	D.I.P.	GRIFFIN PIPE CO.
22 1/2" HB	2 Ea.	3 EA.	D.I.P.	GRIFFIN PIPE CO.
8" Sewer	411 L.F.	395 L.F.	P.V.C.	J.M. MANUFACTURING
Manholes	3 Ea.	3 EA.	PRECAST CONCRETE	ATLANTIC CONCRETE PRODUCTS
4" SHC	217 L.F.	1 EA.	D.I.P.	GRIFFIN PIPE CO.
8" x 6" Reducer	1 Ea.			

NAME OF CONTRACTOR: DEVELOPMENT CONTRACTORS
 WATER AND SAN. AS-BUILTS
 CHECK BOX: SURVEY & DRAFTING DIV. AS BUILT DATE

NOTE: FOR SEDIMENT CONTROL MEASURES SEE SHEET 3 OF 3.

REVIEWED FOR HOWARD SOIL CONSERVATION DISTRICT AND MEETS TECHNICAL REQUIREMENTS.
 Patricia Engler 9/14/05
 SIGNATURE DATE
 NATURAL RESOURCE CONSERVATION SERVICE

THIS DEVELOPMENT PLAN IS APPROVED FOR SOIL EROSION AND SEDIMENT CONTROL BY THE HOWARD COUNTY SOIL CONSERVATION DISTRICT.
 John P. Roberts
 HOWARD SOIL CONSERVATION DISTRICT DATE

SEDIMENT CONTROL MEASURES FOR THIS CONTRACT WILL BE IMPLEMENTED IN ACCORDANCE WITH SECTION 219 OF THE STANDARD SPECIFICATIONS.

DEPARTMENT OF PUBLIC WORKS:
 Chief - Bureau of Utilities DATE

DEPARTMENT OF PLANNING & ZONING:
 Chief - Development Engineering Division DATE

L.D.E., INC.
 8835 N. Columbia 100 Pkwy.
 Columbia, MO 21045
 (410) 715-1070

DESIGNED: BB
 DRAWN: JJ
 CHECKED: BB
 DATE: 7/95

By	No.	REVISION	Date
LDE	1	Realign proposed Water and Sewer	08/19/95

PLAN AND PROFILE
 Water and Sewer Mains
 600 SCALE MAP NO. 47 BLOCK No. 7

GLEN COURT
 Lots 10-26 & 35-37
 6th Election District Howard County, MD.
 Contract No. 24-3449-10
 SCALE AS SHOWN
 SHEET 1 OF 3

3449 W/S/1 Glen Ct.

(AS-BUILT) 9-3-97

