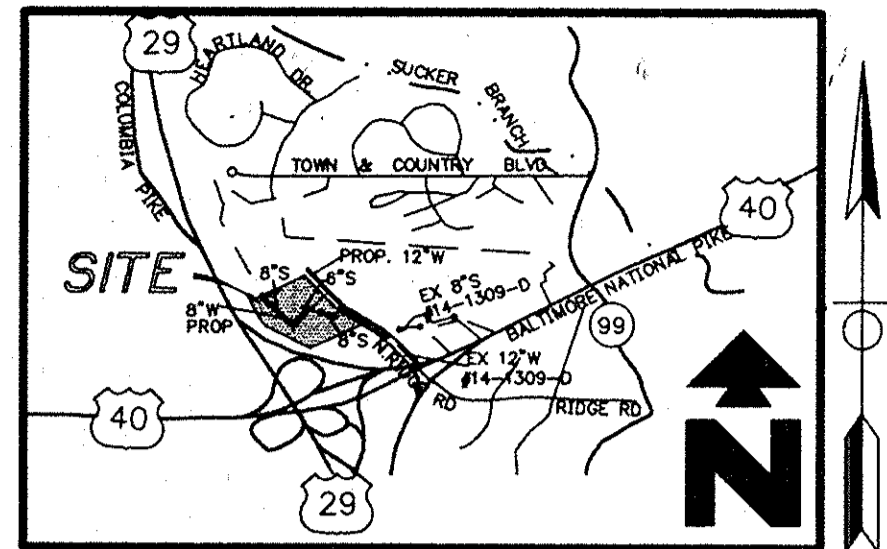


# SANITARY SEWER AND WATER MAIN CONSTRUCTION PLANS

## WAL-MART STORES, INC. ROUTE 40 AND ROUTE 29 2nd ELECTION DISTRICT ELLCOTT CITY, MD HOWARD COUNTY CONTRACT NO. 14-3444-D



Vicinity Map  
SCALE: 1" = 2000'

ITEM	QUANTITIES ESTIMATED	AS-BUILT		
		QUANTITIES	TYPE	MANUFACTURER/SUPPLIER
2-1/2" W DIP	12 48' L.F.	12 L.F.	CL. 52 D.I.P.	ATLANTIC STATES
6" W DIP	69 54' L.F.	69 "	" " "	" " "
8" W DIP	1,165 1/2' L.F.	1,165 "	" " "	" " "
8"x8" TEE	3 EACH	3 EA.		TYLER PIPE
8"x8" TEE	1 EACH	1 EA.		" " "
6" GATE VALVE	3 EACH	3 EA.		MUELLER CO.
8" GATE VALVE	3 EACH	2 "		" " "
8" 90° BEND	1 EACH	1 "		TYLER PIPE
8" 22-1/2° BEND	1 EACH	1 "		" " "
8" 11-1/4° BEND	1 EACH	1 "		" " "
2" WATER METER	1 EACH	1 "		" " "
FIRE HYDRANT	3 EACH	3 "		MUELLER CO.
6" S. DIP	41 L.F.	40 L.F.	CL. 52 D.I.P.	ATLANTIC STATES
8" S. DIP	1281 L.F.	1,253 "	" " "	" " "
MANHOLE	6 EACH	6 EA.		PRECAST
CLEAN OUT	1 EACH	1 "		" " "
CAP 8"	1 EACH	1 "		TYLER PIPE
2" CORP. STOP	1 EACH			" " "

NAME OF UTILITY CONTRACTOR: GAINES & CO.  
SURVEY AND DRAFTING DIVISION AS-BUILT DATE: \_\_\_\_\_

THESE CONSTRUCTION PLANS FOR HOWARD COUNTY CONTRACT NO. 14-3334-D, SHEETS 1 THROUGH 4, WILL SUPERCEDE THE PREVIOUSLY APPROVED CONSTRUCTION PLANS, ON 11/14/95, FOR THE ABOVE NOTED CONTRACT NUMBER BY THE CHIEF DEVELOPMENT ENGINEERING DIVISION, DEPARTMENT OF PLANNING AND ZONING, AND CHIEF BUREAU OF UTILITIES, DEPARTMENT OF PUBLIC WORKS.

SEDIMENT CONTROL MEASURES FOR THIS CONTRACT WILL BE IMPLEMENTED IN ACCORDANCE WITH SECTION 219 OF THE STANDARDS AND SPECIFICATIONS AND SDP-96-01

THE DEVELOPMENT PLAN IS APPROVED FOR SOIL EROSION AND SEDIMENT CONTROL BY HOWARD SOIL CONSERVATION DISTRICT.

APPROVED: John R. Bluto 6/18/96  
HOWARD SOIL CONSERVATION DISTRICT DATE

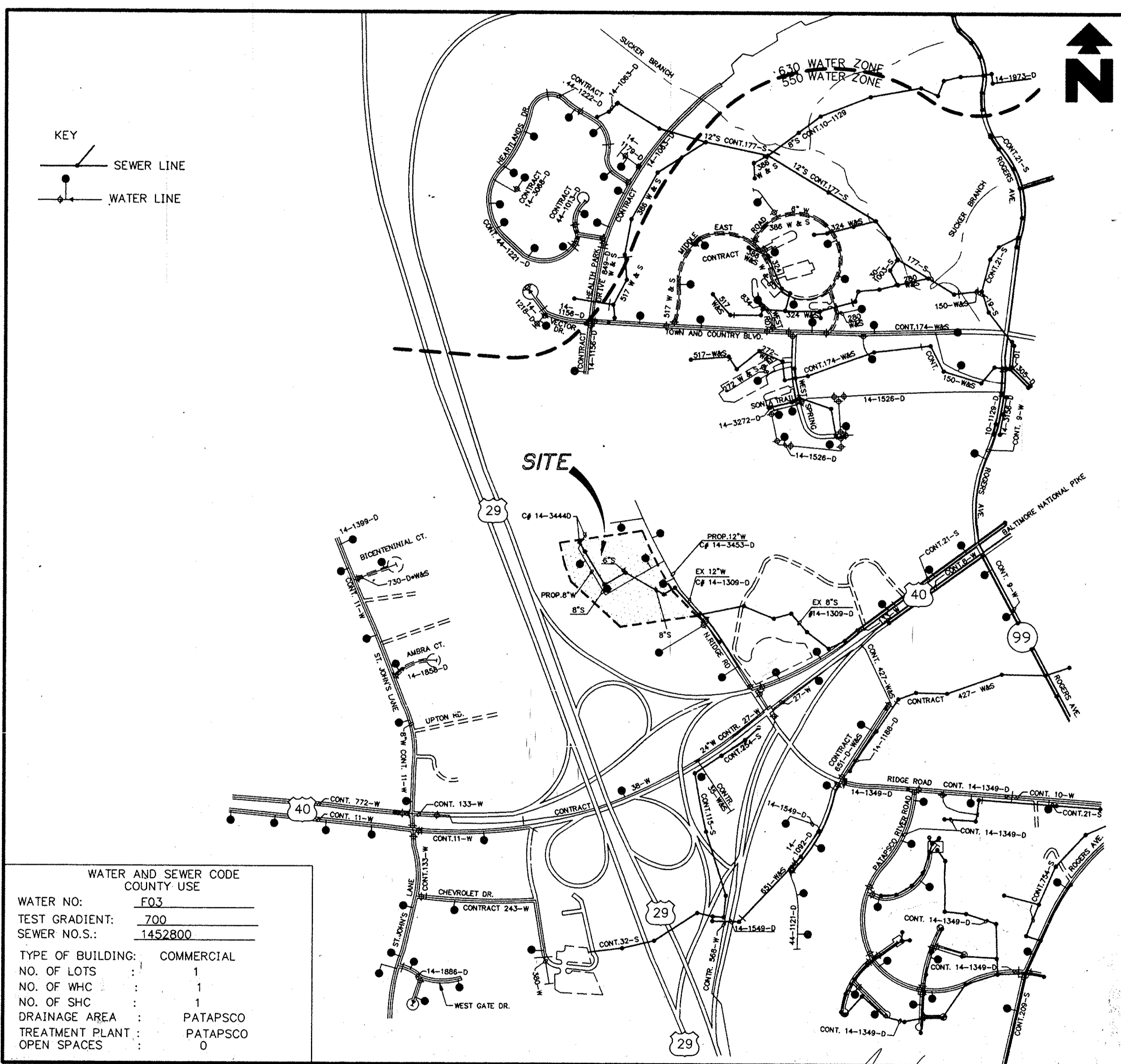
REVIEWED FOR HOWARD SOIL CONSERVATION DISTRICT AND MEETS TECHNICAL REQUIREMENTS

APPROVED: J. H. Wainwright 6/18/96  
S. SOIL CONSERVATION SERVICE DATE

WATER AND SEWER CODE COUNTY USE

WATER NO.: F03  
TEST GRADIENT: 700  
SEWER NO.S.: 1452800

TYPE OF BUILDING: COMMERCIAL  
NO. OF LOTS: 1  
NO. OF WHC: 1  
NO. OF SHC: 1  
DRAINAGE AREA: PATAPSCO  
TREATMENT PLANT: PATAPSCO  
OPEN SPACES: 0



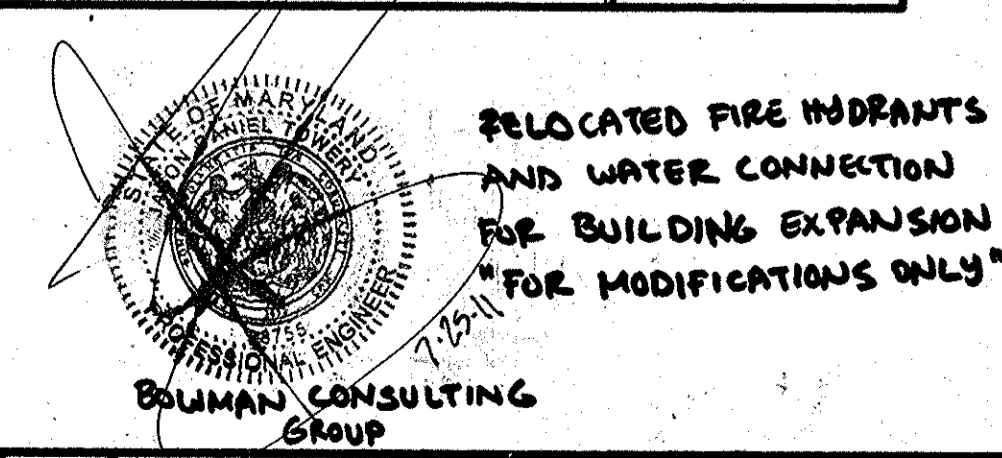
- GENERAL NOTES
- APPROXIMATE LOCATION OF EXISTING MAINS ARE SHOWN. THE CONTRACTOR SHALL TAKE ALL NECESSARY PRECAUTIONS TO PROTECT EXISTING MAINS AND SERVICES AND MAINTAIN UNINTERRUPTED SUPPLY. ANY DAMAGE INCURRED SHALL BE REPAIRED IMMEDIATELY TO THE SATISFACTION OF THE ENGINEER AT THE CONTRACTOR'S EXPENSE.
  - ALL HORIZONTAL CONTROLS ARE BASED ON MARYLAND STATE COORDINATES. (NORTH AMERICAN DATUM OF 1983 (NAD '83))
  - ALL VERTICAL CONTROLS ARE BASED ON U.S.G.S. DATA.
  - ALL PIPE ELEVATIONS SHOWN ARE INVERT ELEVATIONS.
  - CLEAR ALL UTILITIES BY MINIMUM OF 6". CLEAR ALL ROLES BY 2' - 0" MINIMUM OR TUNNEL AS REQUIRED. ARRANGEMENTS FOR BRACING OF POLES AS SHOWN ON THE DRAWINGS IN THE EVENT THE CONTRACTOR'S WORK REQUIRES THE BRACING OF ADDITIONAL POLES. ANY COST INCURRED BY THE OWNER FOR BRACING OF ADDITIONAL POLES OR DAMAGES SHALL BE DEDUCTED FROM MONEY OWED TO THE CONTRACTOR. THE CONTRACTOR SHALL COORDINATE WITH THE UTILITY COMPANIES TO SCHEDULE THE BRACING OF THE POLES.
  - FOR DETAILS NOT SHOWN ON THE DRAWINGS, AND FOR MATERIALS AND CONSTRUCTION METHODS, USE HOWARD COUNTY DESIGN MANUAL, VOLUME IV, STANDARD SPECIFICATIONS AND DETAILS FOR CONSTRUCTION (LATEST EDITION). THE CONTRACTOR SHALL HAVE A COPY OF VOLUME IV ON THE JOB.
  - WHERE TEST PITS HAVE BEEN MADE ON EXISTING UTILITIES, THEY ARE NOTED BY THE SYMBOL AT THE LOCATION OF THE TEST PIT. A NOTE OR NOTES CONTAINING THE RESULTS OF THE TEST PIT OR PITS IS INCLUDED ON THE DRAWINGS. EXISTING UTILITIES IN THE VICINITY OF THE PROPOSED WORK FOR WHICH TEST PITS HAVE NOT BEEN DUG SHALL BE LOCATED BY THE CONTRACTOR TWO WEEKS IN ADVANCE OF CONSTRUCTION OPERATIONS AT HIS OWN EXPENSE.
  - CONTRACTOR SHALL NOTIFY THE FOLLOWING UTILITY COMPANIES OR AGENCIES AT LEAST FIVE WORKING DAYS BEFORE STARTING WORK SHOWN ON THESE PLANS.  
STATE HIGHWAY ADMINISTRATION: 531-5533  
BALTIMORE GAS & ELECTRIC CO. - CONTRACTOR SERVICES: 850-4620  
BALTIMORE GAS & ELECTRIC CO. - UNDERGROUND DAMAGE CONTROL: 787-9068  
MISS UTILITY: 1-800-257-7777  
COLONIAL PIPELINE COMPANY: 795-1390  
BUREAU OF UTILITIES, HOWARD COUNTY DEPT OF PUBLIC WORKS: 313-4900  
C & P TELEPHONE COMPANY: 1-800-257-7777
  - TREES AND SHRUBS ARE TO BE PROTECTED FROM DAMAGE TO MAXIMUM EXTENT. TREES AND SHRUBS LOCATED WITHIN THE CONSTRUCTION STRIP ARE NOT TO BE REMOVED OR DAMAGED BY THE CONTRACTOR.
  - CONTRACTOR SHALL REMOVE TREES, STUMPS AND ROOTS ALONG LINE OF EXCAVATION. PAYMENT FOR SUCH REMOVAL SHALL BE INCLUDED IN THE UNIT PRICE BID FOR CONSTRUCTION OF THE MAIN.
  - THE CONTRACTOR SHALL NOTIFY THE BUREAU OF HIGHWAYS, HOWARD COUNTY, AT (410) 313-2450 AT LEAST FIVE WORKING DAYS BEFORE ANY OPEN CUT OF ANY COUNTY ROAD OR BORING/JACKING OPERATION IN COUNTY ROADS FOR LAYING WATER/SEWER MAINS OR HOUSE CONNECTIONS. THE APPROVAL OF THESE DRAWINGS WILL CONSTITUTE COMPLIANCE WITH DPW REQUIREMENTS PER SECTION 18.114(A) OF THE HOWARD COUNTY CODE.
  - ALL WATER MAINS TO BE D.I.P. CLASS 52 UNLESS OTHERWISE NOTED.
  - TOPS OF ALL WATER MAINS TO HAVE A MINIMUM OF 3-1/2' COVER UNLESS OTHERWISE NOTED.
  - VALVES ADJACENT TO TEES SHALL BE STRAPPED TO TEES.
  - ALL FITTINGS SHALL BE BUTTRESSED OR ANCHORED WITH CONCRETE IN ACCORDANCE WITH THE STANDARD DETAILS UNLESS OTHERWISE PROVIDED FOR ON THE DRAWINGS.
  - FIRE HYDRANTS SHALL BE SET TO THE BURY LINE ELEVATIONS SHOWN ON THE DRAWINGS. ALL FIRE HYDRANTS SHALL BE STRAPPED AND BUTTRESSED WITH CONCRETE IN ACCORDANCE WITH STANDARD DETAILS. SOIL AROUND THE FIRE HYDRANT SHALL BE COMPACTED IN ACCORDANCE WITH SECTION 1000 AND 1005 OF THE STANDARD SPECIFICATIONS.
  - THE CONTRACTOR SHALL NOT OPERATE ANY WATER MAIN VALVES ON THE EXISTING WATER SYSTEM.
  - ALL WATER HOUSE CONNECTIONS SHALL BE FOR OUTSIDE METER SETTINGS.
  - ALL SEWER MAINS SHALL BE D.I.P. AND P.V.C. UNLESS OTHERWISE NOTED.
  - ALL MANHOLES SHALL BE 4' - 0" INSIDE DIAMETER UNLESS OTHERWISE NOTED.
  - FORCE MAINS SHALL BE D.I.P. ONLY
  - MANHOLES SHOWN WITH 12" AND 16" WALLS ARE FOR BRICK MANHOLES ONLY.
  - MANHOLES DESIGNATED W.T. IN PLAN AND PROFILE SHALL HAVE WATERTIGHT FRAME AND COVERS STANDARD DETAIL G5.52. WHERE WATERTIGHT MANHOLE FRAME AND COVER IS USED, SET TOP OF FRAME 1' - 6" ABOVE FINISHED GRADE UNLESS OTHERWISE NOTED ON THE DRAWINGS.

**SHEET INDEX**

NO.	DESCRIPTION
1.	COVER SHEET
2.	SANITARY SEWER AND WATER MAIN PLAN
3.	WATER LINE PROFILES
4.	SANITARY SEWER PROFILES
5.	REVISED SANITARY SEWER AND WATER MAIN PLAN

PLAN REFERENCE NUMBERS  
REZONING CASE #2B-941  
S-95-01  
P-95-21

CONTRACT NO. 14-3444-D  
ELLCOTT CITY WAL-MART  
SANITARY SEWER AND WATER MAIN PLAN  
HOWARD COUNTY, MARYLAND



Vicinity Map  
SCALE: 1" = 600'

<p>DEPARTMENT OF PUBLIC WORKS HOWARD COUNTY, MARYLAND</p> <p><u>Robert A. Reimer</u> 6-13-96 CHIEF, BUREAU OF UTILITIES DATE</p>	<p>DEPARTMENT OF PLANNING AND ZONING HOWARD COUNTY, MARYLAND</p> <p><u>J. H. Wainwright</u> 6/18/96 CHIEF, DEVELOPMENT ENGINEERING DIVISION DATE</p>	<p><b>GAH ENGINEERING ASSOCIATES, INC.</b> ENGINEERS PLANNERS SURVEYORS 9175 Guilford Road, Suite 306 Columbia, MD 21046 (301) 490-4145 FAX (301) 490-4149</p>	<p>principal LDF project manager TMP designer TMP project no. 9146 date 2/96</p> <p>BY NO REVISION</p>	<p>DATE 6/9/95 DATE 7/28/95 DATE 7/26/95</p>	<p>600' SCALE MAPS NO. 17 &amp; 24 BLOCK NO. 24 &amp; 6</p>	<p><b>TITLE SHEET</b></p>	<p>scale 1" = 50' 1 OF 5</p>
--	--	--	--	--	---	---------------------------	----------------------------------

(AS-BUILT) 9-3-97

(REPLACEMENT) ISSUED 6/19/96  
 WAL-MART  
 ELLCOTT CITY  
 WS/1  
 3444  
 016000146 WATERSEWDING9146COVER FFI Mar 29 17:23:41 1996 SYSTEM MS-2006 \* MAIN

WAL-MART  
 ELLICOTT CITY  
 WS/2  
 3444



0 50' 75' 100'  
 SCALE IN FEET  
 1" = 50'

**LEGEND**

- EXISTING**
- RCP REINFORCED CONCRETE PIPE
  - CURB INLET
  - FENCE-LINE
  - TREELINE
  - CATCH BASIN
  - STORM DRAIN MANHOLE
- PROPOSED - GENERAL SYMBOLS**
- BOUNDARY LINE
  - RIGHT OF WAY LINE
  - STORM DRAIN
  - GAS SERVICE
  - SANITARY SEWER SERVICE
  - WATER SERVICE

**GENERAL NOTES:**

**UTILITY PLAN**

A. ALL ELECTRIC, TELEPHONE AND GAS EXTENSIONS AND SERVICE LINES TO BE CONSTRUCTED TO THE APPROPRIATE UTILITY COMPANY SPECIFICATIONS. ALL UTILITY DISCONNECTIONS TO BE COORDINATED WITH THE RESPECTIVE UTILITY COMPANIES.

B. **ENGINEER'S NOTICE TO CONTRACTOR**  
 THE CONTRACTOR IS SPECIFICALLY CAUTIONED THAT THE LOCATION AND/OR ELEVATION OF EXISTING UTILITIES AS SHOWN ON THESE PLANS IS BASED ON RECORDS OF THE VARIOUS UTILITY COMPANIES AND, WHERE POSSIBLE, MEASUREMENTS TAKEN IN THE FIELD. THE INFORMATION IS NOT TO BE RELIED ON AS BEING EXACT OR COMPLETE. THE CONTRACTOR MUST CALL THE APPROPRIATE UTILITY COMPANY AT LEAST 48 HOURS BEFORE ANY EXCAVATION TO REQUEST EXACT FIELD LOCATION OF UTILITIES. IT SHALL BE THE RESPONSIBILITY OF THE CONTRACTOR TO RELOCATE ANY EXISTING UTILITIES WHICH CONFLICT WITH THE PROPOSED IMPROVEMENTS SHOWN ON THE PLANS.

C. **NOTICE TO CONTRACTOR**  
 PRIOR TO INSTALLATION OF STORM OR SANITARY SEWER, THE CONTRACTOR SHALL EXCAVATE, VERIFY, AND CALCULATE ALL CROSSINGS AND INFORM WAL-MART AND THE ENGINEER OF ANY CONFLICTS PRIOR TO CONSTRUCTION. THE ENGINEER WILL BE HELD HARMLESS IN THE EVENT THE ENGINEER IS NOT NOTIFIED OF DESIGN CONFLICTS.

D. THE SITE WORK FOR THIS PROJECT SHALL MEET OR EXCEED THE "WAL-MART STANDARD SITE WORK SPECIFICATIONS".

E. **NOTICE TO CONTRACTOR**  
 CONSTRUCTION SHALL NOT START ON ANY PUBLIC UTILITY SYSTEM UNTIL WRITTEN APPROVAL HAS BEEN RECEIVED FROM THE ELLICOTT CITY AND CONTRACTOR HAS BEEN NOTIFIED BY THE ENGINEER.

F. GAS, ELECTRIC, AND TELEPHONE SERVICE CONNECTIONS TO THE BUILDING ARE SHOWN. THE PLANS ARE CURRENTLY PROCESSING THROUGH THE UTILITY COMPANIES FOR EXACT LOCATIONS FOR SERVICE TO SITE.

G. UNLESS OTHERWISE NOTED, ALL MANHOLES ARE HOWARD COUNTY STD. 05.01.

H. ALL FIRE HYDRANTS SHALL BE SET AS PER STANDARD DETAIL W-111.

I. ALL COMPACTED FILL SHALL BE 85% COMPACTION.

J. DETECTOR CHECK PER H.C. STANDARD DETAIL W 3.43 TO TAKE PLACE OF BACK FLOW PREVENTER.

- SPECIAL NOTES**
- ALL WATER LINES TO BE D.I.P. WITH 3.5' MIN. COVER.
  - ALL SANITARY SEWER LINES TO BE D.I.P. WITH 4'0" MIN. COVER.
  - NOTE TO SPRINKLER CONTRACTOR  
 THE EXISTING PUBLIC WATER SUPPLIES COMBINED WITH ASSUMED FIRE PROTECTION LEAD IN SIDING SHOULD YIELD A BASE OF RISER SUPPLY, DOWNSTREAM OF AN 8" HIGH SINGLE DETECTOR CHECK FIRE METER OF STATIC PRESSURE = 49 PSI  
 RESIDUAL PRESSURE = 38 PSI  
 AT = 1150 GPM FLOW

I CERTIFY THAT ALL DEVELOPMENT AND/OR CONSTRUCTION WILL BE DONE ACCORDING TO THESE PLANS, AND THAT ANY RESPONSIBLE PERSONNEL INVOLVED IN THE CONSTRUCTION PROJECT WILL HAVE A CERTIFICATE OF ATTENDANCE AT A DEPARTMENT OF NATURAL RESOURCES APPROVED TRAINING PROGRAM FOR THE CONTROL OF SEDIMENT AND EROSION BEFORE BEGINNING THE PROJECT. I WILL PROVIDE THE HOWARD SOIL CONSERVATION DISTRICT WITH AN AS-BUILT PLAN OF THE POND WITHIN THIRTY DAYS OF COMPLETION.

SIGNATURE OF DEVELOPER: *[Signature]* DATE: 6/6/96

I CERTIFY THAT THIS PLAN FOR POND CONSTRUCTION, EROSION AND SEDIMENT CONTROL REPRESENTS A PRACTICAL AND WORKABLE PLAN BASED ON MY KNOWLEDGE OF THE SITE CONDITIONS. THIS PLAN WAS PREPARED IN ACCORDANCE WITH THE REQUIREMENTS OF THE HOWARD COUNTY SOIL CONSERVATION DISTRICT. I HAVE NOTIFIED THE DEVELOPER THAT HE DISTURBED THE HOWARD SOIL CONSERVATION DISTRICT WITH AN AS-BUILT PLAN OF THE POND WITHIN THIRTY DAYS OF COMPLETION.

SIGNATURE OF ENGINEER: *[Signature]* DATE: 6/6/96

THESE PLANS FOR SMALL POND CONSTRUCTION, SOIL EROSION AND SEDIMENT CONTROL MEET THE REQUIREMENTS OF THE HOWARD SOIL CONSERVATION DISTRICT (HOWARD SOIL CONSERVATION DISTRICT, SDP-96-11(FINAL WAL-MART SITE PLAN) F-96-09(FINAL RECORD PLAT), SDP-96-11(FINAL WAL-MART SITE PLAN))

DATE: 6/18/96

THESE PLANS HAVE BEEN REVIEWED FOR THE HOWARD SOIL CONSERVATION DISTRICT AND MEET THE TECHNICAL REQUIREMENTS FOR SMALL POND CONSTRUCTION, SOIL EROSION AND SEDIMENT CONTROL

DATE: 6/17/96

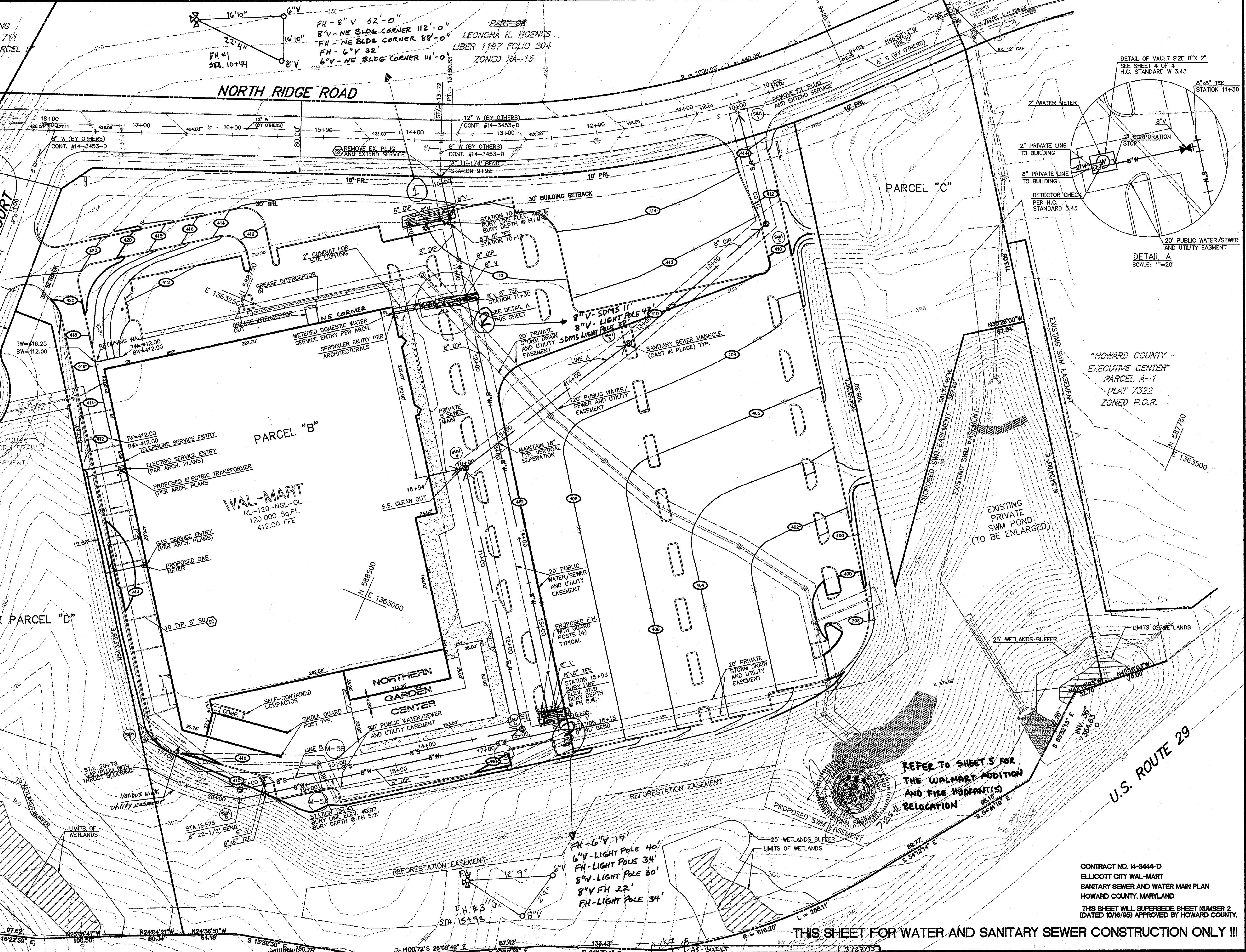
CHIEF, DEVELOPMENT ENGINEERING DIVISION

CHIEF, DIVISION AND LAND DEVELOPMENT AND RESEARCH

DIRECTOR

DEPARTMENT OF PUBLIC WORKS  
 HOWARD COUNTY, MARYLAND  
 DATE: 6/17/96  
 CHIEF, BUREAU OF UTILITIES

DEPARTMENT OF PLANNING AND ZONING  
 HOWARD COUNTY, MARYLAND  
 DATE: 6/17/96  
 CHIEF, DEVELOPMENT ENGINEERING DIVISION



CONTRACT NO. 14-3444-D  
 ELLICOTT CITY WAL-MART  
 SANITARY SEWER AND WATER MAIN PLAN  
 HOWARD COUNTY, MARYLAND  
 THIS SHEET WILL SUPERSEDE SHEET NUMBER 2  
 (DATED 10/16/95) APPROVED BY HOWARD COUNTY.

**THIS SHEET FOR WATER AND SANITARY SEWER CONSTRUCTION ONLY !!!**

**ENGINEERING ASSOCIATES, INC.**

ENGINEERS PLANNERS SURVEYORS  
 9175 Guilford Road, Suite 306 (301) 490-4145  
 Columbia, MD 21046 FAX (301) 490-4149

principal	LD	MAN	5	REVISED PER H. C. REDLINE COMMENTS	4/17/96
project manager	MAN	4	4	REVISED PER H.C. REVIEW COMMENTS	9/7/95
designer	TMP	MAN	3	REVISED SHEET LAYOUT PER H.C. REVIEW COMMENTS	8/9/95
project no.	9146	2	2	REVISED PER H.C. REVIEW COMMENTS	7/28/95
date	2/96	BY	NO	REVISED WATERLINE (BY OTHERS)	7/28/95

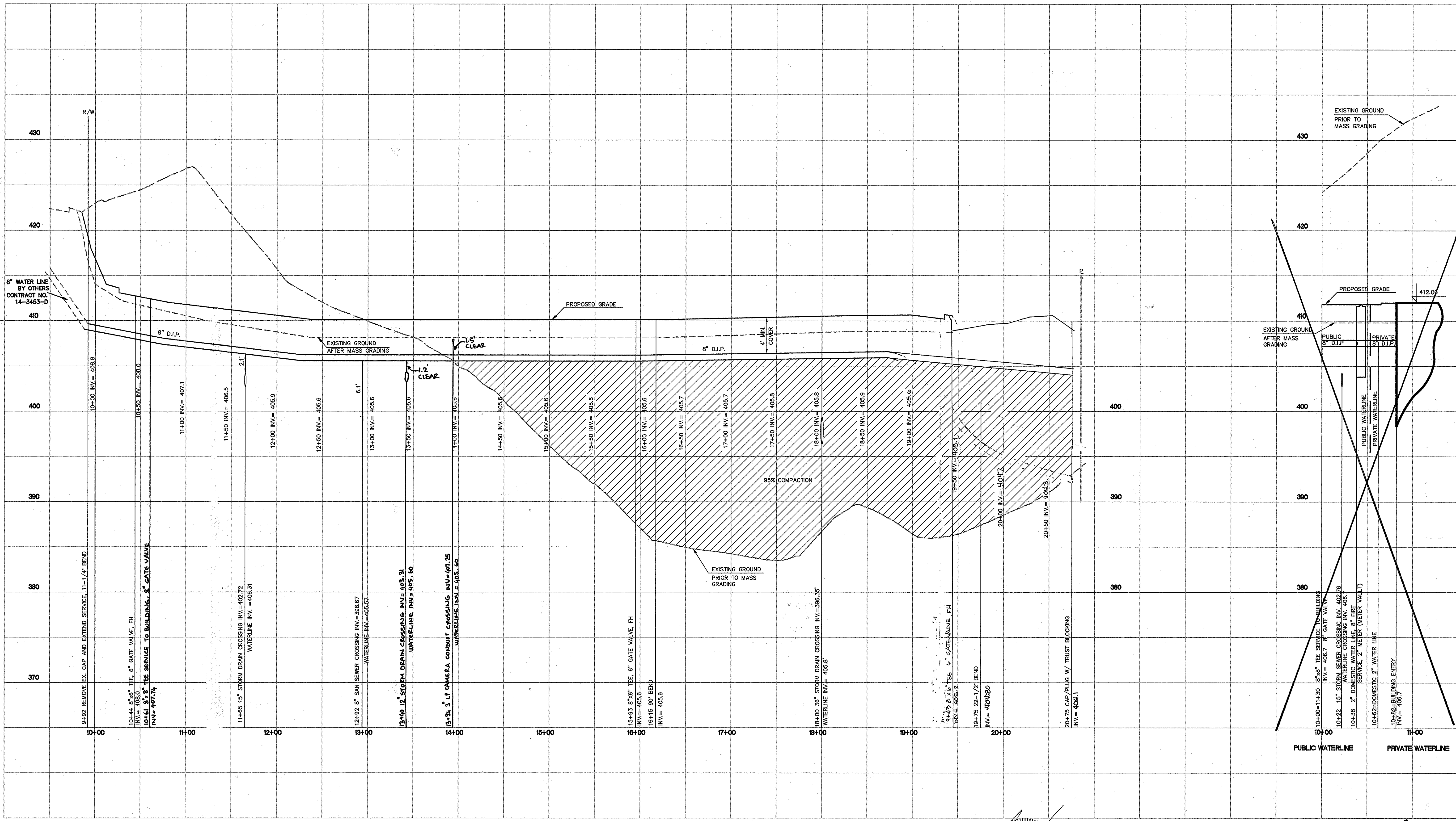
DATE	6/17/96	BY	AS-BUILT	3/27/95	
REVISION	REVISED ELEV. & DEPTH AT FIRE HYDRANT	DATE	6/17/96	BY	AS-BUILT

**SANITARY SEWER AND WATER MAIN PLAN**  
 600' SCALE MAP NOS. 17 & 24 BLOCK NOS. 24 & 26  
**ELLICOTT CITY WAL-MART**  
 ROUTE 40 AND ROUTE 29  
 CONTRACT #14-3444-D  
 2<sup>ND</sup> ELECTION DISTRICT  
 HOWARD COUNTY, MARYLAND  
 scale 1"=50'  
 2 OF 5

**(AS-BUILT) 9-3-97**

WALMART  
ELLICOTT CITY

2444 WS/3  
P. 1800013446 WATERSEWERS 01-16-95 STATION 2008 - FIC



PROPOSED WATER LINE #1  
STA. 10+00 TO 22+90  
SCALE: 1"=50' HORZ.  
1"=5' VERT.

RELOCATED FIRE HYDRANTS AND  
WATER SERVICE CONNECTION FOR  
BUILDING EXPANSION  
SCALE: 1"=50' HORZ.  
1"=5' VERT.  
"FOR MODIFICATIONS ONLY"  
BOWMAN CONSULTING GROUP

PROPOSED 8" WATERHOUSE  
CONNECTION  
SCALE: 1"=50' HORZ.  
1"=5' VERT.

CONTRACT NO. 14-3444-D  
ELLICOTT CITY WAL-MART  
SANITARY SEWER AND WATER MAIN PLAN  
HOWARD COUNTY, MARYLAND

THIS SHEET SUPERSEDES SHEET DATED 10-16-95

JD/T	8	RELOCATED EX-FIRE HYDRANT & 8" WATERLINE	7/25/11
principal	SLJ	REVISED PROP. GRADE & WATERLINE @ 19+45 TO 20+75	11/8/97
project manager	MAM	REVISED PER H.C. REDLINE COMMENTS	4/17/98
designer	MAM	REVISED PER H.C. REVIEW COMMENTS	9/7/95
	MAM	REVISED INVERTS AFTER SUBMISSION	8/23/95
	MAM	REVISED SHEET LAYOUT PER H.C. REVIEW COMMENTS	8/9/95
project no.	9146	REVISED PER H.C. REVIEW COMMENTS	7/28/95
	1	REVISED WATERLINE (BY OTHERS)	7/26/95
date	2/96	BY NO	REVISION

WATER LINE PROFILE

600' SCALE MAP NOS. 17 & 24 BLOCK NOS. 24 & 26

DEPARTMENT OF PUBLIC WORKS  
HOWARD COUNTY, MARYLAND  
P. 1800013446 WATERSEWERS 01-16-95 STATION 2008 - FIC

ENGINEERING ASSOCIATES, INC  
ENGINEERS PLANNERS SURVEYORS  
9175 Guilford Road, Suite 306 (301) 490-4145  
Columbia, MD 21046 FAX (301) 490-4149



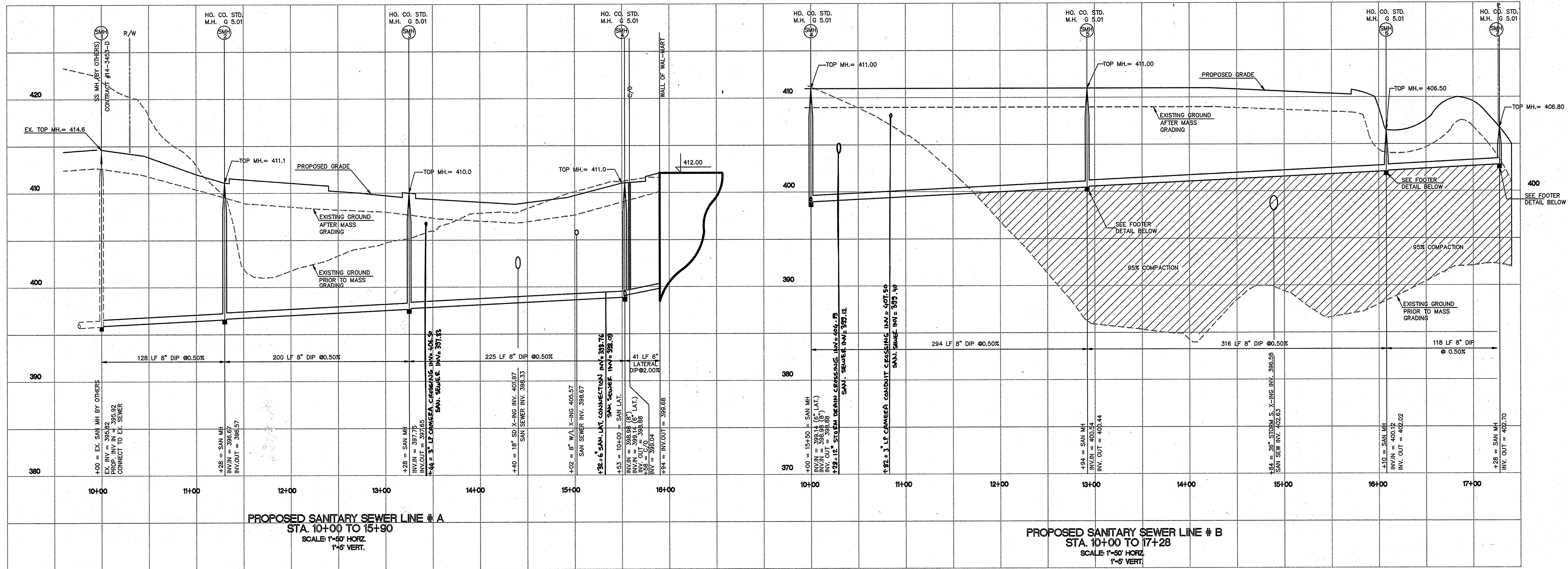
ELLICOTT CITY WAL-MART  
ROUTE 40 AND ROUTE 29  
CONTRACT #14-3444-D  
2<sup>ND</sup> ELECTION DISTRICT  
HOWARD COUNTY, MARYLAND

scale  
1"=50'  
3 OF 5

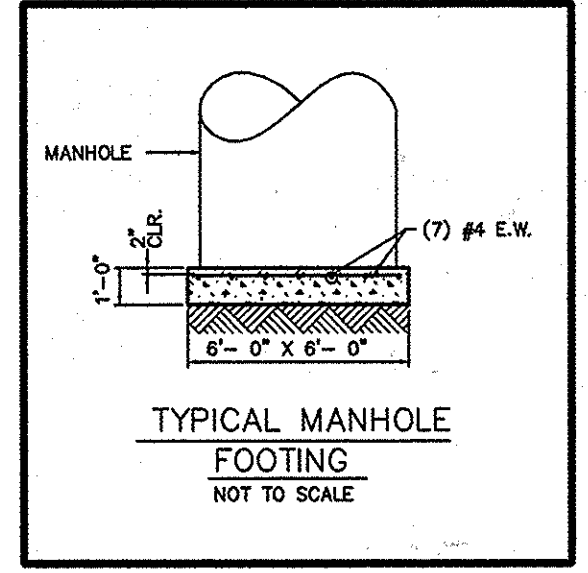
(AS-BUILT) 9-3-97

WALMART  
ELLCOTT CITY

3444 WS/A  
P. 100018146 WATERSEWERING 9146 SAN. MAR. 23 09:48:19 1998 - STAT. 2008 - F.W.



UNIVERSITY OF MARYLAND  
COLLEGE PARK, MARYLAND  
725-11 "FOR MODIFICATIONS ONLY"  
BOWMAN CONSULTING GROUP



THIS SHEET SUPERSEDES SHEET DATED 10-16-95

CONTRACT NO. 14-3444-D  
ELLCOTT CITY WAL-MART  
SANITARY SEWER AND WATER MAIN PLAN  
HOWARD COUNTY, MARYLAND

DEPARTMENT OF PUBLIC WORKS  
HOWARD COUNTY, MARYLAND  
9175 Guilford Road, Suite 306  
Columbia, MD 21046  
DATE 6-13-94

ENGINEERING ASSOCIATES, INC.  
PLANNERS SURVEYORS  
9175 Guilford Road, Suite 306  
Columbia, MD 21046  
DATE 6/13/94

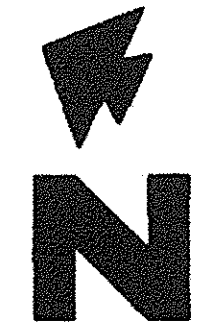


principal	LDJ	7/25/91	RELOCATED EX. FIRE HYDRANT & WATERLINE	7/25/91
project manager	SLJ/ACI	6	REVISED PER H. C. REDLINE COMMENTS	4/17/96
designer	MAM	5	REVISED PER H.C. REVIEW COMMENTS	9/7/95
	MAM	4	REVISED INVERTS AFTER SUBMISSION	8/23/95
	MAM	3	REVISED SHEET LAYOUT PER H.C. REVIEW COMMENTS	8/9/95
	MAM	2	REVISED PER H.C. REVIEW COMMENTS	7/28/95
	MAM	1	REVISED WATERLINE (BY OTHERS)	7/26/95
date	2/96	BY	NO	REVISION

SANITARY SEWER PROFILE  
600' SCALE MAP NOS. 17 & 24  
BLOCK NOS. 24 & 26

ELLCOTT CITY WAL-MART  
ROUTE 40 AND ROUTE 29  
CONTRACT #14-3444-D  
2<sup>ND</sup> ELECTION DISTRICT  
HOWARD COUNTY, MARYLAND  
scale 1"=50'  
4 OF 5

(AS-BUILT) 4-3-97



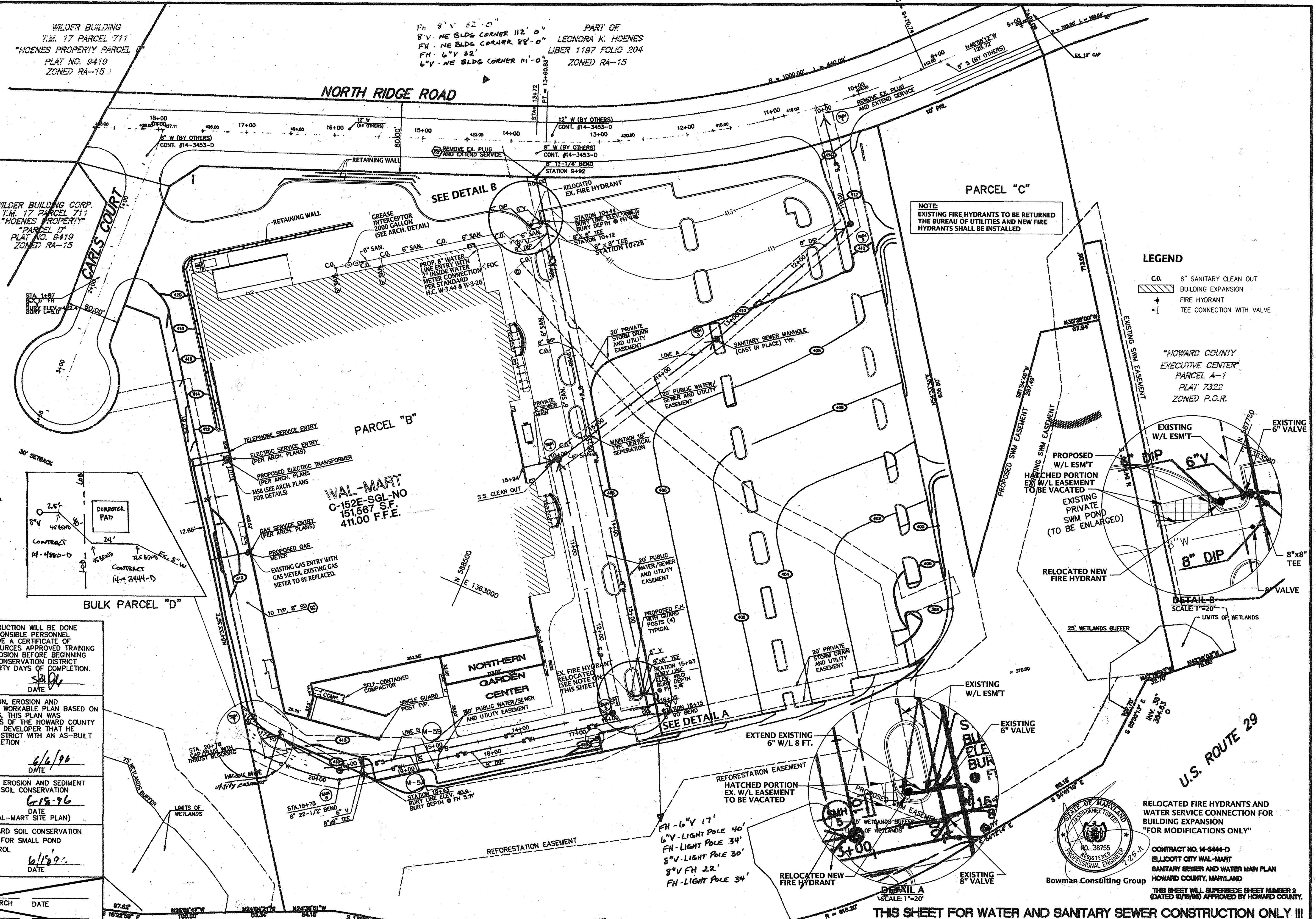
SCALE IN FEET  
1" = 50'

### LEGEND

- EXISTING**
- RCP REINFORCED CONCRETE PIPE
  - CURB INLET
  - FENCE-LINE
  - TREELINE
  - CATCH BASIN
  - STORM DRAIN MANHOLE
- PROPOSED - GENERAL SYMBOLS**
- BOUNDARY LINE
  - RIGHT OF WAY LINE
  - STORM DRAIN
  - GAS SERVICE
  - SANITARY SEWER SERVICE
  - WATER SERVICE

### GENERAL NOTES

- UTILITY PLAN**
- ALL ELECTRIC, TELEPHONE AND GAS EXTENSIONS AND SERVICE LINES TO BE CONSTRUCTED TO THE APPROPRIATE UTILITY COMPANY SPECIFICATIONS. ALL UTILITY CONNECTIONS TO BE COORDINATED WITH THE DESIGNATED UTILITY COMPANIES.
  - ENGINEER'S NOTICE TO CONTRACTOR: THE CONTRACTOR IS SPECIFICALLY CAUTIONED THAT THE LOCATION AND/OR ELEVATION OF EXISTING UTILITIES AS SHOWN ON THESE PLANS IS BASED ON RECORDS OF THE VARIOUS UTILITY COMPANIES AND, WHERE POSSIBLE, MEASUREMENTS TAKEN IN THE FIELD. THIS INFORMATION IS NOT TO BE RELIED ON AS BEING EXACT OR COMPLETE. THE CONTRACTOR MUST CALL THE APPROPRIATE UTILITY COMPANY AT LEAST 48 HOURS BEFORE ANY EXCAVATION TO REQUEST EXACT FIELD LOCATION OF UTILITIES. IT SHALL BE THE RESPONSIBILITY OF THE CONTRACTOR TO RELOCATE ALL EXISTING UTILITIES WHICH CONFLICT WITH THE PROPOSED IMPROVEMENTS SHOWN ON THE PLANS.
  - NOTICE TO CONTRACTOR: PRIOR TO INSTALLATION OF STORM OR SANITARY SEWER, THE CONTRACTOR SHALL EXCAVATE, VERIFY, AND CALCULATE ALL CROSSINGS AND RECORD ALL-ARMSY AND THE ENGINEER OF ANY COMPLETES PRIOR TO CONSTRUCTION. THE ENGINEER WILL BE HELD HARMLESS IN THE EVENT THE ENGINEER IS NOT NOTICED OF DESIGN COMPLETES.
  - THE SITE WORK FOR THIS PROJECT SHALL MEET OR EXCEED THE "WAL-MART STANDARD SITE WORK SPECIFICATIONS".
  - NOTICE TO CONTRACTOR: CONSTRUCTION SHALL NOT START ON ANY PUBLIC UTILITY SYSTEM UNLESS WRITTEN APPROVAL HAS BEEN RECEIVED FROM THE ELLICOTT CITY AND CONTRACTOR HAS BEEN NOTICED BY THE ENGINEER.
  - GAS, ELECTRIC, AND TELEPHONE SERVICE CONNECTIONS TO THE BUILDING ARE SHOWN. THE PLANS ARE CURRENTLY PROCESSING THROUGH THE UTILITY COMPANIES FOR EXACT LOCATIONS FOR SERVICE TO SITE.
  - UNLESS OTHERWISE NOTED, ALL MANHOLES ARE HOWARD COUNTY STD. 60.0".
  - ALL FIRE HYDRANTS SHALL BE SET AS PER STANDARD DETAIL 9-1.1.1.
  - ALL COMPACTED FILL SHALL BE 85% COMPACTION.
  - DETECTOR CHECK PER H.C. STANDARD DETAIL 3-3.4 TO TAKE PLACE OF BACK FLOW PREVENTER.
- SPECIAL NOTES**
- ALL WATER LINES TO BE D.I.P. WITH 3.5" MIN. COVER.
  - ALL SANITARY SEWER LINES TO BE D.I.P. WITH 4.0" MIN. COVER.
  - NOTE: CONTRACTOR TO VERIFY THE EXISTING PUBLIC WATER SUPPLIES CORNER WITH ASSUMED FIRE PROTECTION LEAD IN BEING SHOULD YIELD A BASE OF RESE SUPPLY DOWNSTREAM OF AN 8" SINGLE DETECTOR CHECK FIRE METER OF STATIC PRESSURE = 40 PSI RESIDUAL PRESSURE = 38 PSI AT = 1150 GPM FLOW

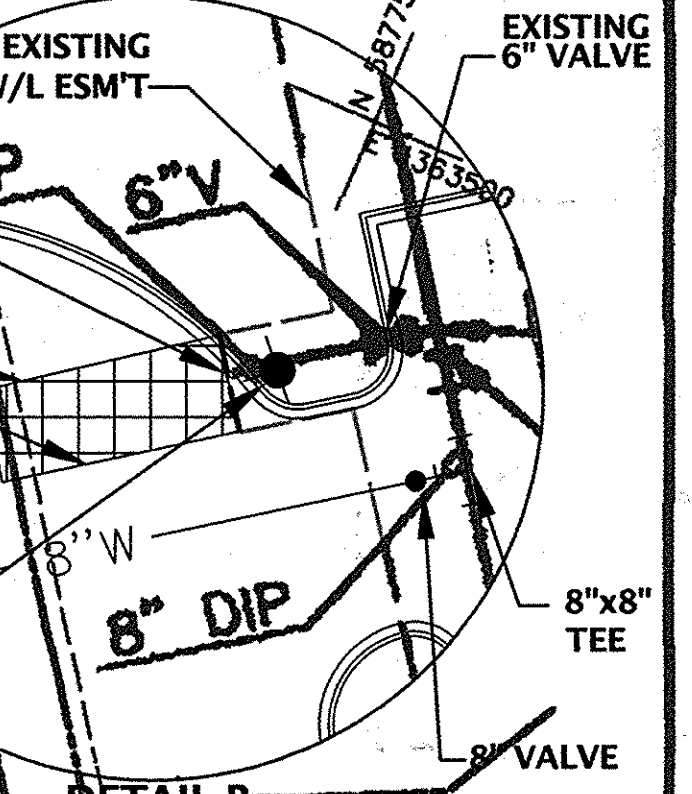


**NOTE:**  
EXISTING FIRE HYDRANTS TO BE RETURNED  
THE BUREAU OF UTILITIES AND NEW FIRE  
HYDRANTS SHALL BE INSTALLED

### LEGEND

- C.O. 6" SANITARY CLEAN OUT
- BUILDING EXPANSION
- FIRE HYDRANT
- TEE CONNECTION WITH VALVE

"HOWARD COUNTY  
EXECUTIVE CENTER"  
PARCEL A-1  
PLAT 7322  
ZONED P.C.R.



RELOCATED NEW FIRE HYDRANT  
EXISTING 8" VALVE

RELOCATED NEW FIRE HYDRANT  
EXISTING 8" VALVE

RELOCATED NEW FIRE HYDRANT  
EXISTING 8" VALVE

RELOCATED NEW FIRE HYDRANT  
EXISTING 8" VALVE

RELOCATED NEW FIRE HYDRANT  
EXISTING 8" VALVE

RELOCATED NEW FIRE HYDRANT  
EXISTING 8" VALVE

RELOCATED NEW FIRE HYDRANT  
EXISTING 8" VALVE

RELOCATED NEW FIRE HYDRANT  
EXISTING 8" VALVE

RELOCATED NEW FIRE HYDRANT  
EXISTING 8" VALVE

RELOCATED NEW FIRE HYDRANT  
EXISTING 8" VALVE

I CERTIFY THAT ALL DEVELOPMENT AND/OR CONSTRUCTION WILL BE DONE ACCORDING TO THESE PLANS AND THAT ANY RESPONSIBLE PERSONNEL INVOLVED IN THE CONSTRUCTION PROJECT WILL HAVE A CERTIFICATE OF ATTENDANCE AT A DEPARTMENT OF NATURAL RESOURCES APPROVED TRAINING PROGRAM FOR THE CONTROL OF SEDIMENT AND EROSION BEFORE BEGINNING THE PROJECT. I WILL PROVIDE THE HOWARD SOIL CONSERVATION DISTRICT WITH AN AS-BUILT PLAN OF THE POND WITHIN THIRTY DAYS OF COMPLETION.

SIGNATURE OF DEVELOPER: *[Signature]* DATE: 6/6/96

I CERTIFY THAT THIS PLAN FOR POND CONSTRUCTION, EROSION AND SEDIMENT CONTROL REPRESENTS A PRACTICAL AND WORKABLE PLAN BASED ON MY PERSONAL KNOWLEDGE OF THE SITE CONDITIONS, THIS PLAN WAS PREPARED IN ACCORDANCE WITH THE REQUIREMENTS OF THE HOWARD COUNTY SOIL CONSERVATION DISTRICT, I HAVE NOTIFIED THE DEVELOPER THAT HE SHALL PROVIDE THE HOWARD SOIL CONSERVATION DISTRICT WITH AN AS-BUILT PLAN OF THE POND WITHIN THIRTY DAYS OF COMPLETION.

SIGNATURE OF ENGINEER: *[Signature]* DATE: 6/19/96

THESE PLANS FOR SMALL POND CONSTRUCTION, SOIL EROSION AND SEDIMENT CONTROL MEET THE REQUIREMENTS OF THE HOWARD SOIL CONSERVATION DISTRICT. HOWARD SOIL CONSERVATION DISTRICT F-96-09(FINAL RECORD PLAT), SDP-96-11(FINAL WAL-MART SITE PLAN)

DATE: 6/19/96

THESE PLANS HAVE BEEN REVIEWED FOR THE HOWARD SOIL CONSERVATION DISTRICT AND MEET THE TECHNICAL REQUIREMENTS FOR SMALL POND CONSTRUCTION, SOIL EROSION AND SEDIMENT CONTROL.

U.S. SOIL CONSERVATION SERVICE DATE: 6/19/96

CHIEF, DEVELOPMENT ENGINEERING DIVISION DATE: 6/19/96

CHIEF, DIVISION AND LAND DEVELOPMENT AND RESEARCH DATE: 6/19/96

DIRECTOR DATE: 6/19/96

DEPARTMENT OF PUBLIC WORKS HOWARD COUNTY, MARYLAND  
CHIEF, BUREAU OF UTILITIES DATE: 6/19/96

DEPARTMENT OF PLANNING AND ZONING HOWARD COUNTY, MARYLAND  
CHIEF, DEVELOPMENT ENGINEERING DIVISION DATE: 6/19/96

**ENGINEERING ASSOCIATES, INC.**  
ENGINEERS PLANNERS SURVEYORS  
9175 Guilford Road, Suite 306 (301) 490-4145  
Columbia, MD 21046 FAX (301) 490-4149

Principal	LD	AM	5	REVISED PER H. C. REDLINE COMMENTS	4/17/96
Project manager	MAM	4	5	REVISED SITE LAYOUT	1/15/96
Designer	TMP	3	2	REVISED PER H.C. REVIEW COMMENTS	9/7/95
Project no.	9146	2	3	REVISED SHEET LAYOUT PER H.C. REVIEW COMMENTS	8/9/95
Date	2/96	1	2	REVISED PER H.C. REVIEW COMMENTS	7/28/95
		1	1	REVISED WATERLINE (BY OTHERS)	7/26/95

DATE	REVISION	DATE	REVISION
07/25/11	RELOCATED EX. FIRE HYDRANT & 8" WATERLINE	07/25/11	
1/18/97	REVISED ELEV. & DEPTH OF FIRE HYDRANT	1/18/97	
1/22/16	AS-BUILTS	1/22/16	

**ELLICOTT CITY WAL-MART**  
ROUTE 40 AND ROUTE 29  
CONTRACT #14-3444-D  
2<sup>ND</sup> ELECTION DISTRICT  
HOWARD COUNTY, MARYLAND

scale 1"=50'  
5 OF 5

(AS-BUILT) 8-3-97

WAL-MART ELLICOTT CITY