

AS-BUILT 11-9-95

QUANTITIES

ITEMS	QUANTITIES ESTIMATED	AS-BUILT		
		QUANTITIES	TYPE	MANUFACTURER / SUPPLIER
8" WATER	220 LF	228 LF	CL 52	ATLANTIC STATES
6" WATER	14 LF	17 LF	CL 52	ATLANTIC STATES
12" 2" x 4" V	1 EA	1 EA		MUELLER CO
6" VALVE	1 EA	1 EA		
2" x 4" REDUCER	1 EA	1 EA	CL 52	ATLANTIC STATES
FIRE HYDRANT	1 EA	1 EA		KEENEY

NAME OF UTILITY CONTRACTOR: MID ATLANTIC UTILITIES

CHECKBOX

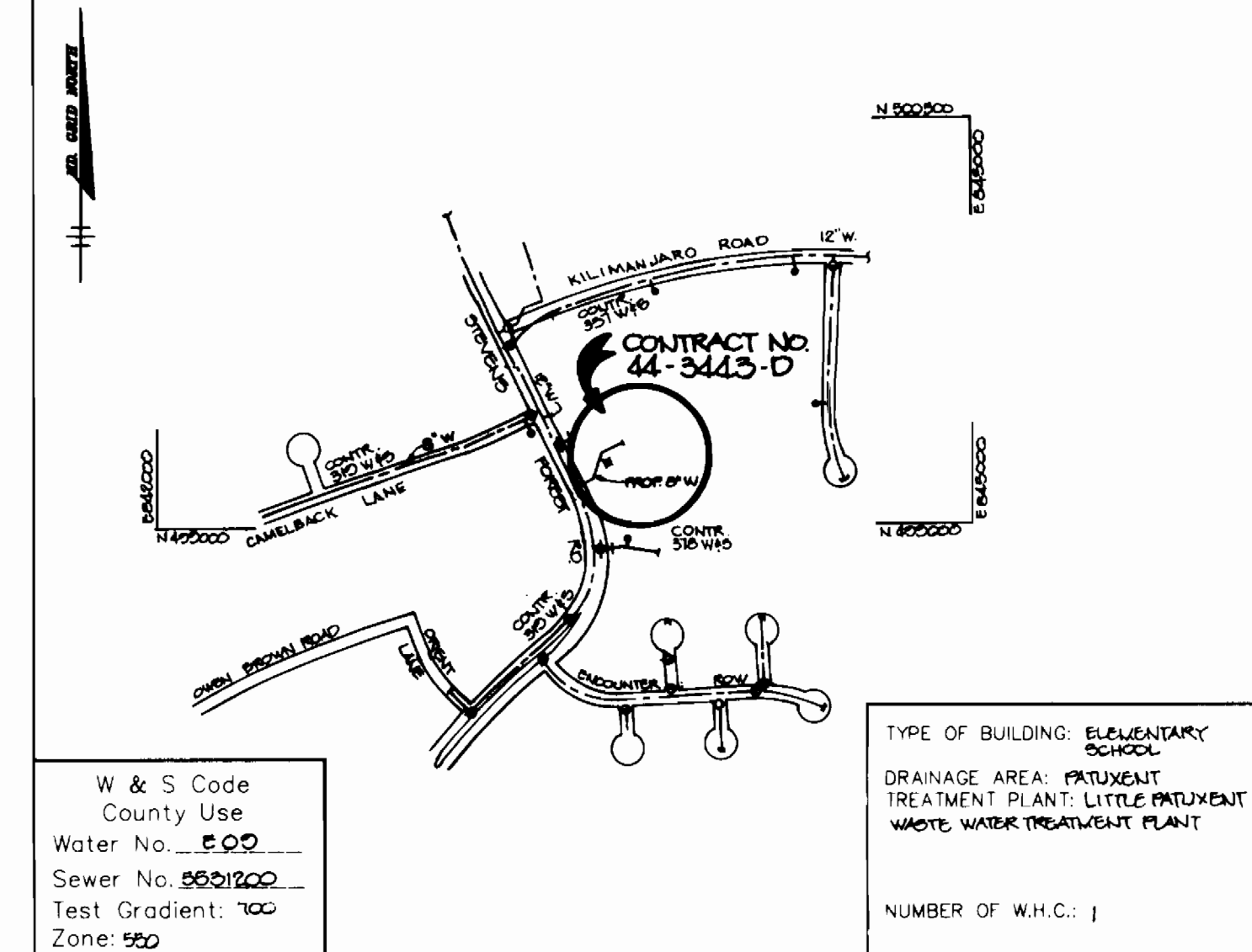
AS-BUILT DATE: 11-9-95

SURVEY AND DRAFTING DIVISION

# WATER EXTENSION

## STEVEN'S FOREST ELEMENTARY SCHOOL

### 6th ELECTION DISTRICT HOWARD COUNTY, MARYLAND



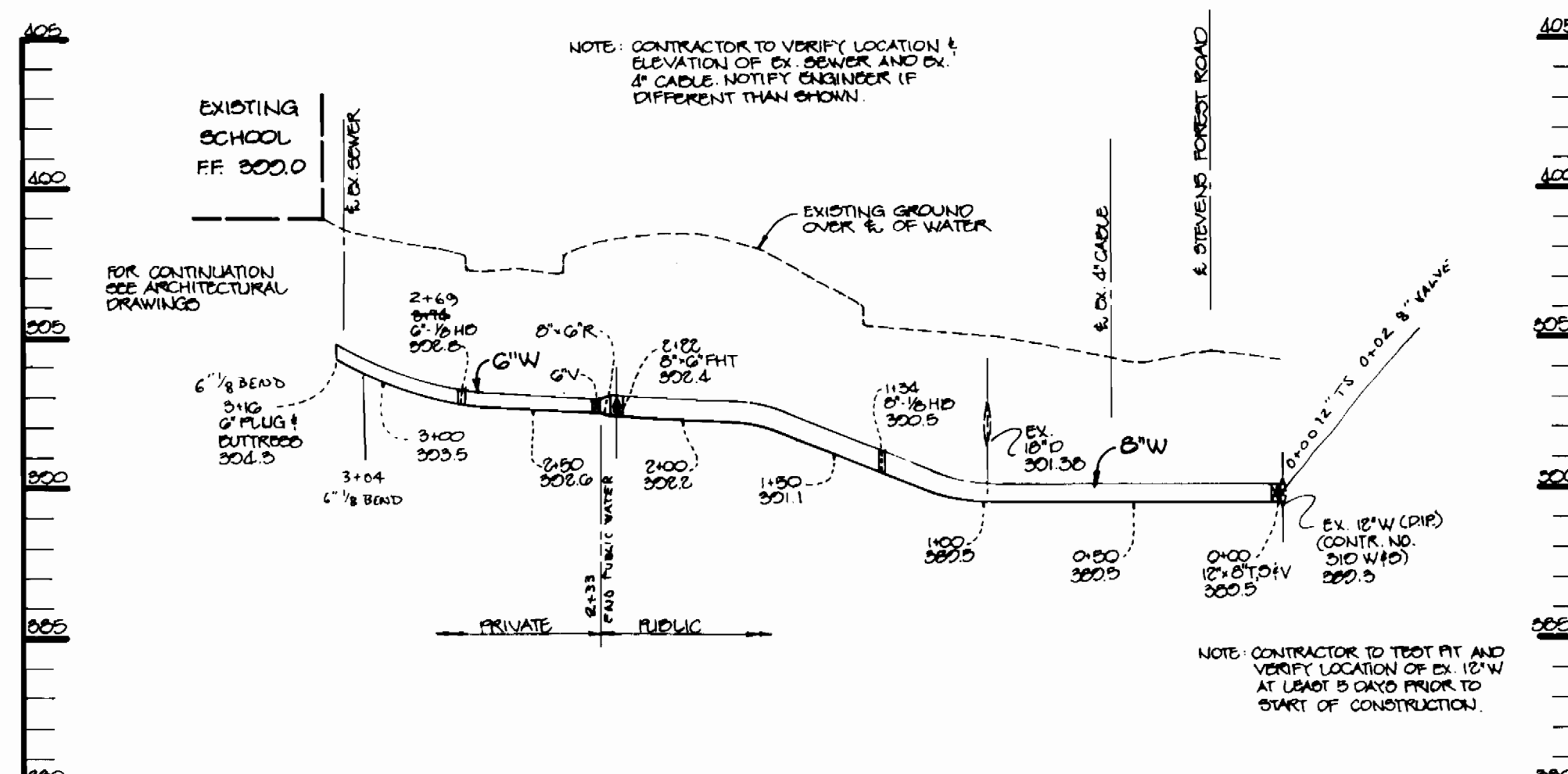
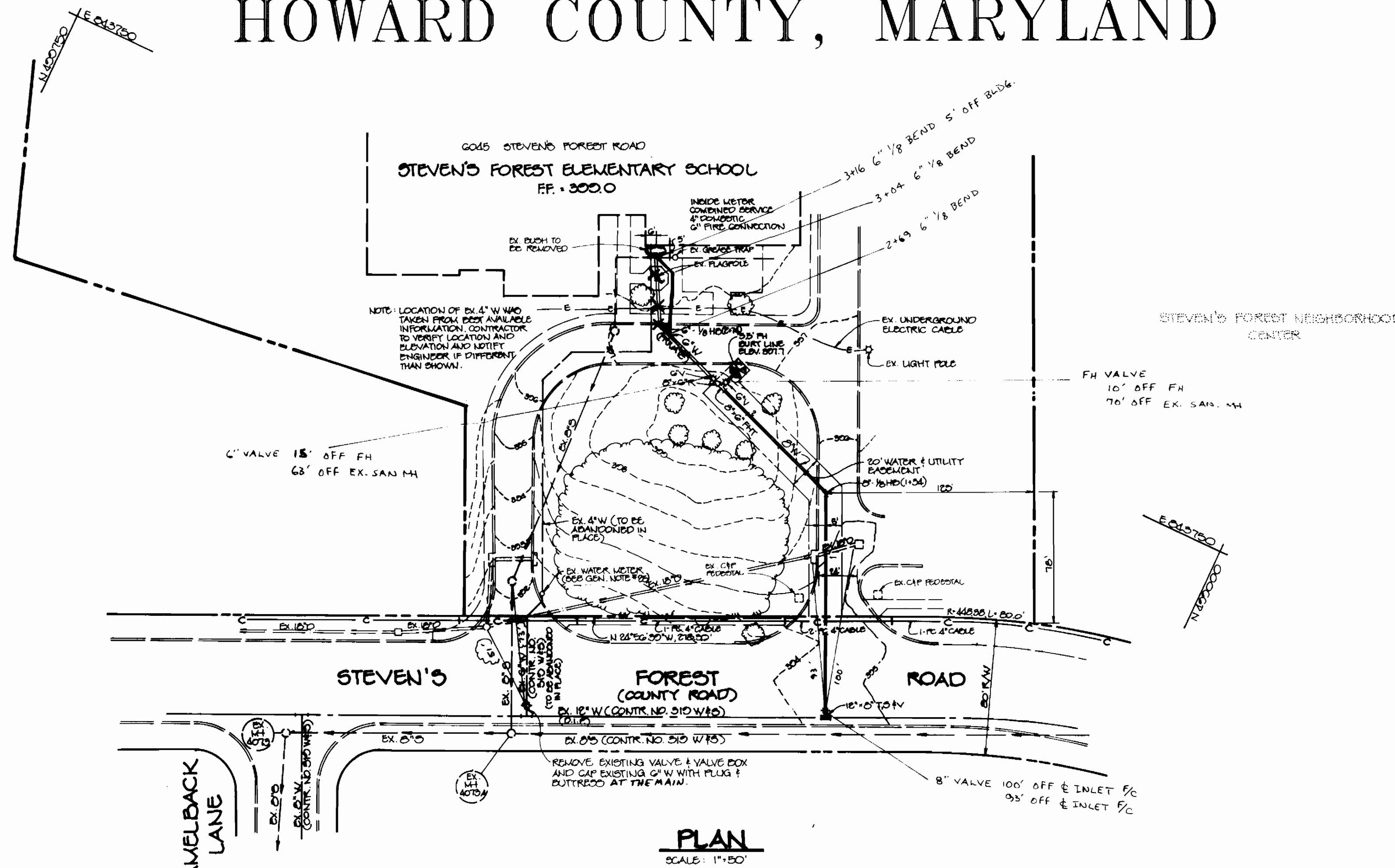
VICINITY MAP

SCALE: 1"=600'

GENERAL NOTES

- Approximate location of existing mains are shown. The contractor shall take all necessary precautions to protect existing mains and services and maintain uninterrupted supply. Any damage incurred shall be repaired immediately to the satisfaction of the Engineer at the Contractor's expense.
- All horizontal controls are based on Maryland State Coordinates.
- All vertical controls are based on U.S.G.S. data.
- All pipe elevations shown are invert elevations.
- Clear all utilities by a minimum of 6". Clear all poles by 2'-0" minimum or tunnel as required. The owner has contacted the utility companies and has made arrangements for bracing of poles as shown on the drawings. In the event the contractor's work requires the bracing of additional poles, any cost incurred by the owner for bracing of additional poles or damages shall be deducted from money owed the contractor. The contractor shall coordinate with the utility companies to schedule the bracing of the poles.
- For details not shown on the drawings, and for materials and construction methods use Howard County Design Manual, Volume IV, Standard Specifications and Detail for Construction. (Latest Edition). The contractor shall have a copy of Volume IV on the job.
- Where test pits have been made on existing utilities, they are noted by the symbol at the location of the test pit. A note or notes containing the results of the test pit or pits is included on the drawings. Existing utilities in the vicinity of the proposed work for which test pits have not been dug shall be located by the contractor two weeks in advance of construction operations at his own expense.
- Contractor shall notify the following utility companies or agencies at least five working days before starting work shown on these plans:
 

State Highway Administration	531-5533
Baltimore Gas & Electric Co. Contractor Services	850-4620
Baltimore Gas & Electric Co. Underground Damage Control	787-3068
Miss Utility	1-800-257-7777
Colonial Pipeline Co.	795-1390
Bureau of Utilities, Howard County Department of Public Works	313-4900
- Trees and shrubs are to be protected from damage to maximum extent. Trees and shrubs located within the construction strip are not to be removed or damaged by the contractor.
- Contractor shall remove trees, stumps and roots along line of excavation. Payment for such removal shall be included in the unit price bid for construction of the main.
- All water mains to be D.I.P. Class 52 unless otherwise noted.
- Tops of all water mains to have a minimum of 3-1/2' cover unless otherwise noted.
- Valves adjacent to trees shall be strapped to trees.
- All fittings shall be buttressed or anchored with concrete in accordance with the Standard Details unless otherwise provided for on the drawings.
- Fire hydrants shall be set to the bury line elevations shown on the drawings. All fire hydrants shall be restrained and buttressed with concrete in accordance with Standard Details. Soil around the fire hydrant shall be compacted in accordance with Section 1000 and 1005 of the Standard Specifications.
- The contractor shall not operate any water main valves on the existing water system.
- All water house connections shall be for inside meter setting unless otherwise noted on plans or in specifications.
- Contractor is solely responsible for construction means, methods, techniques, sequences, procedures, and safety precautions and programs.
- The fire hydrant shall be installed as per standard detail W.1.11.
- Fire hydrants will be located 3' FROM BACK OF CURB unless otherwise noted.
- Contractor shall notify the Bureau of Highways, Howard County, at (410) 50-2850 at least five working days before any open cut of any county road or boring/jacking operation in county roads for laying water/sewer mains or house connections. The approval of these drawings will constitute compliance with DPW requirements per Section 112.14 (a) of the Howard County Code.
- Sediment control to be provided on an as needed basis to be determined in the field by the Sediment Control Inspector.
- Contractor to provide traffic control during construction in accordance with the Manual On Uniform Traffic Control Devices (Latest Edition).
- Contractor to protect the existing structure or trees and replace any damaged during construction.
- Existing water meter to be removed and returned to Bureau of Utilities. New meter vault.



Sediment control measures for this contract will be implemented in accordance with Section 219 of the Specifications

Review for Howard Soil Conservation District and meets technical requirements.

*Patricia Engle* 6/12/95  
NATURAL RESOURCES CONSERVATION SERVICE DATE

This plan is approved for soil erosion and sediment control by the Howard Soil Conservation District.

*John K. Parel* 6/12/95  
HOWARD SOIL CONSERVATION DISTRICT DATE

DEPARTMENT OF PUBLIC WORKS  
HOWARD COUNTY, MARYLAND

*James A. ...* 6/12/95  
DIRECTOR OF PUBLIC WORKS DATE

*John K. Parel* 6/12/95  
CHIEF, BUREAU OF ENGINEERING DATE

*John K. Parel* 6-8-95  
CHIEF, BUREAU OF UTILITIES DATE

*John K. Parel* 6/12/95  
CHIEF, LAND DEVELOPMENT DATE

RIEMER MUEGGE & ASSOCIATES, INC.  
Planners Engineers Surveyors  
8818 Centre Park Drive • Suite 200 • Columbia, MD 21045  
410-997-8900 • FAX: 410-997-9282  
800/0000 90.070

*J. Parel*  
JAYKANT D. PAREKH # 19148

DES: CJR			
DRN: WAD			
CHK: JDP			
DATE: 6-5-95			
BY: NO.	AS-BUILT	REVISION	DATE
			11/95

PLAN AND PROFILE OF A WATER MAIN

600' SCALE MAP NO. 30 BLOCK NO. 0

STEVEN'S FOREST ELEMENTARY SCHOOL  
6th ELECTION DISTRICT  
HOWARD COUNTY, MARYLAND  
CONTRACT NO. 44-3445-D

SCALE AS SHOWN

SHEET 1 OF 1

3443<sup>1/2</sup> Stevens Forest Elem. School