

AS-BUILT 3-28-96

3440 ws/1 Cradlerock Farm (lots 1-70)

### QUANTITIES

ITEMS	QUANTITIES ESTIMATED	AS-BUILT		
		QUANTITIES	TYPE	MANUFACTURER / SUPPLIER
8" x 8" TEE	5	5	MJ	UNION FOUNDRY WATER PRO
8" x 6" TEE	3	3	MJ HYDR.	" " " " " "
8" VALVE	9	9	RES. SEAT GATE	MUELLER " " " "
6" VALVE	3	3	MJ	" " " " " "
FIRE HYDRANT	3	3	MJ	UNION FOUNDRY " " " "
11.25" BEND	-	-	MJ	" " " " " "
22.50" BEND	4	4	MJ	" " " " " "
45" BEND	15	15	MJ	" " " " " "
8" WATER	1955	1955	DIP 52	ATLANTIC STATES A-1 PIPE
6" WATER	60	60	DIP 52	" " " " " "
1" W.H.C.	1242	1260	"K" COPPER	CAMBRIDGE-LEE WATER PRO
2" W.H.C.	160	165	"K" COPPER	" " " " " "
RED. P.V.C.	1	1	LED RED	UNION FOUNDRY " " " "
8" SEWER	1781	1800	SDR35 PVC	J-M MFG. " " " "
MAN HOLE	15	15	SEWER	ATLANTIC CONC. PRODUCTS
4" S.H.C.	978	980	SDR36 PVC	J-M MFG. WATER PRO

NAME OF UTILITY CONTRACTOR: GAINES

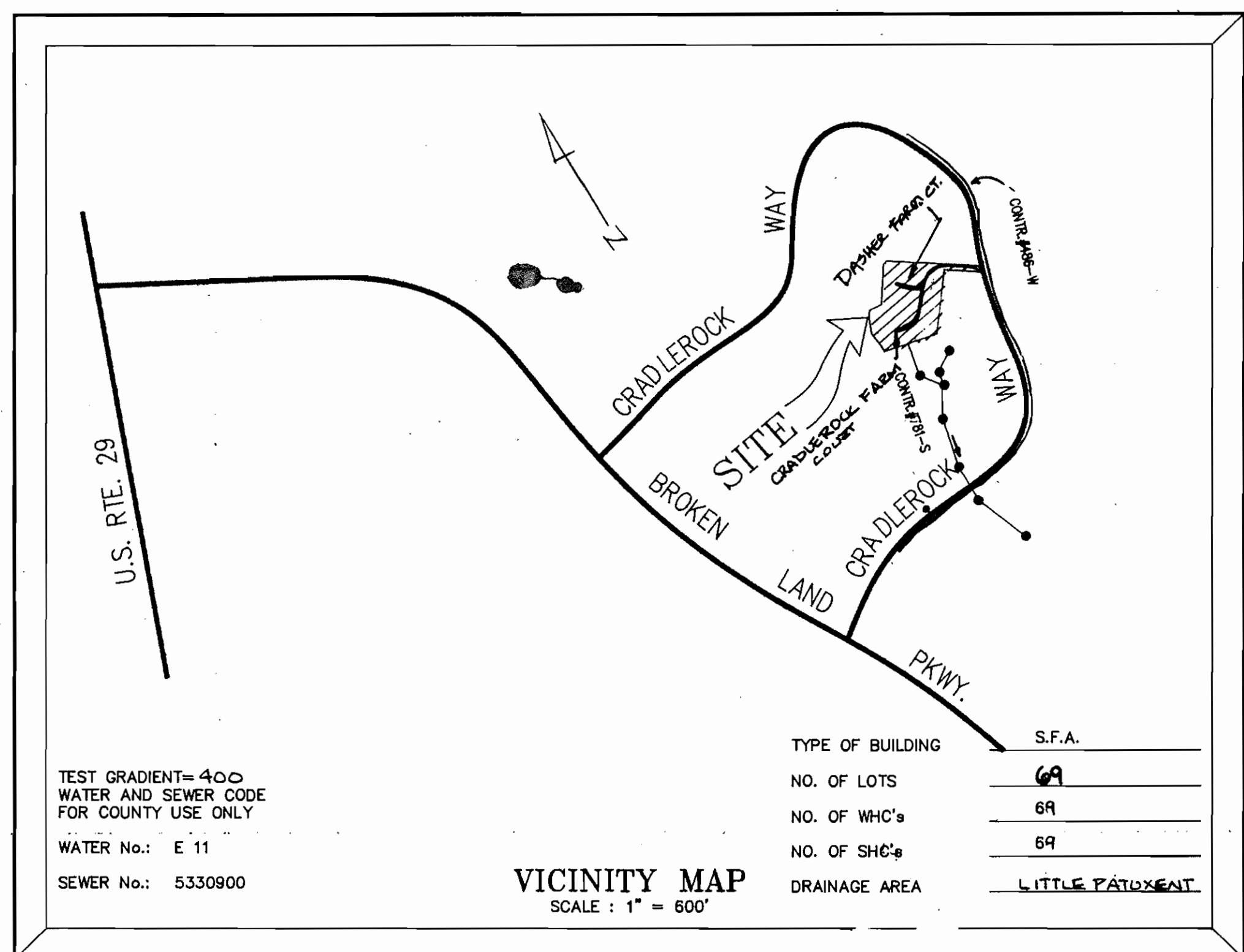
SURVEY AND DRAFTING DIVISION AS-BUILT DATE: \_\_\_\_\_

### GENERAL NOTES

- APPROXIMATE LOCATION OF EXISTING MAINS ARE SHOWN. THE CONTRACTOR SHALL TAKE ALL NECESSARY PRECAUTIONS TO PROTECT EXISTING MAINS AND SERVICES AND MAINTAIN UNINTERRUPTED SUPPLY. ANY DAMAGE INCURRED SHALL BE REPAIRED IMMEDIATELY TO THE SATISFACTION OF THE ENGINEER AT THE CONTRACTOR'S EXPENSE.
- ALL HORIZONTAL CONTROLS ARE BASED ON MARYLAND STATE COORDINATES.
- ALL VERTICAL CONTROLS ARE BASED ON U.S.G.S. DATUM.
- ALL PIPE ELEVATIONS SHOWN ARE INVERT ELEVATIONS.
- CLEAR ALL UTILITIES BY A MINIMUM OF 6". CLEAR ALL POLES BY 2'-0" MINIMUM OR TUNNEL AS REQUIRED.
- FOR DETAILS NOT SHOWN ON THE DRAWINGS, AND FOR MATERIALS AND CONSTRUCTION METHODS, USE HOWARD COUNTY DESIGN MANUAL, VOLUME FOUR, STANDARD SPECIFICATIONS AND DETAILS FOR CONSTRUCTION. THE CONTRACTOR SHALL HAVE A COPY OF VOLUME FOUR ON THE JOB.
- WHERE TEST PITS HAVE BEEN MADE ON EXISTING UTILITIES, THEY ARE NOTED BY THE SYMBOL AT THE LOCATION OF THE TEST PIT. A NOTE OR NOTES CONTAINING THE RESULTS OF THE TEST PIT OR PITS IS INCLUDED ON THE DRAWINGS. EXISTING UTILITIES IN THE VICINITY OF THE PROPOSED WORK FOR WHICH TEST PITS HAVE NOT BEEN DUG SHALL BE LOCATED BY THE CONTRACTOR TWO WEEKS IN ADVANCE OF CONSTRUCTION OPERATIONS AT HIS OWN EXPENSE.
- CONTRACTOR SHALL NOTIFY THE FOLLOWING UTILITIES OR AGENCIES AT LEAST FIVE WORKING DAYS BEFORE STARTING WORK SHOWN ON THIS PLANS:
  - STATE HIGHWAY ADMINISTRATION : 531-5533
  - BALTIMORE GAS & ELECTRIC CO. - CONTRACTOR SERVICES : 850-4620
  - UNDERGROUND DAMAGE CONTROL : 787-9068
  - TROUBLE SHOOTING : 298-9001
  - MISS UTILITY : 1-800-257-7777
  - COLONIAL PIPELINE COMPANY : 795-1390
  - BUREAU OF UTILITIES, HOWARD COUNTY DEPARTMENT OF PUBLIC WORKS : 313-4900
  - BELL ATLANTIC TELEPHONE COMPANY : 410-954-8230
- TREES AND SHRUBS ARE TO BE PROTECTED FROM DAMAGE TO MAXIMUM EXTENT. TREES AND SHRUBS LOCATED WITHIN THE CONSTRUCTION STRIP ARE NOT TO BE REMOVED OR DAMAGED BY THE CONTRACTOR.
- CONTRACTOR SHALL REMOVE TREES, STUMPS AND ROOTS ALONG LINE OF EXCAVATION. PAYMENT FOR SUCH REMOVAL SHALL BE INCLUDED IN THE UNIT PRICE BID FOR CONSTRUCTION OF THE MAIN.
- ALL WATER MAINS TO BE D.I.P. CLASS 52 UNLESS OTHERWISE NOTED.
- TOPS OF ALL WATER MAINS TO HAVE A MINIMUM OF 3-1/2' COVER UNLESS OTHERWISE NOTED.
- VALVES ADJACENT TO TEES SHALL BE STRAPPED TO TEES.
- ALL FITTINGS SHALL BE BUTTRESSED OR ANCHORED WITH CONCRETE IN ACCORDANCE WITH THE STANDARD DETAILS UNLESS OTHERWISE PROVIDED FOR ON THE DRAWINGS.
- FIRE HYDRANTS SHALL BE SET TO THE BURY LINE ELEVATIONS SHOWN ON THE DRAWINGS. ALL FIRE HYDRANTS SHALL BE RESTRAINED PER STANDARD DETAIL W 1.11 AND W 2.13. SOIL AROUND THE FIRE HYDRANT SHALL BE COMPACTED IN ACCORDANCE WITH SECTION 1000 AND 100T OF THE STANDARD SPECIFICATIONS.
- THE CONTRACTOR SHALL NOT OPERATE ANY WATER MAIN VALVES ON THE EXISTING WATER SYSTEM.
- ALL WATER HOUSE CONNECTIONS SHALL BE FOR INSIDE METER SETTING, UNLESS OTHERWISE NOTED ON THE PLANS OR IN THE SPECIFICATIONS.
- WATER MAINS OR WATER HOUSE CONNECTION LINES MUST BE PLACED AS TO HAVE AT LEAST ONE (1) FOOT SEPARATION FROM THE SEWER MAIN OR SEWER HOUSE CONNECTION AS THEY PASS ABOUT IT.
- MANHOLES DESIGNATED W.T. IN PLAN AND PROFILE SHALL HAVE WATERTIGHT FRAME AND COVERS STANDARD DETAIL G5.52, WHERE WATERTIGHT MANHOLE FRAME AND COVER IS USED, SET TOP OF FRAME 1'-6" ABOVE FINISHED GRADE UNLESS OTHERWISE NOTED ON THE DRAWINGS.
- ALL SEWER MAINS SHALL BE D.I.P., AND P.V.C. UNLESS OTHERWISE NOTED.
- THE CONTRACTOR SHALL PROVIDE A JOINT IN ALL SEWER MAINS WITHIN 2'-0" OF EXTERIOR MANHOLE WALL.
- ALL MANHOLES SHALL BE 4'-0" INSIDE DIAMETER UNLESS OTHERWISE NOTED.
- MANHOLES SHOWN WITH 12" AND 16" WALLS ARE FOR BRICK MANHOLES ONLY.
- MANHOLES LOCATED WITHIN PROPOSED ROADWAY SHALL HAVE STANDARD HEAVY TRAFFIC MANHOLE FRAME AND COVER, STANDARD DETAIL G 5.51
- ALL D.I.P. FITTINGS SHALL BE IN ACCORDANCE WITH AWWA SPECIFICATION C-153 : DUCTILE IRON COMPACT FITTINGS, 3" THROUGH 12" FOR WATER & OTHER LIQUIDS.
- ALL EXISTING STRUCTURES, EXCEPT THE SPRINGHOUSE, TO BE REMOVED.
- HOUSE(S) WITH THE SYMBOL "C.N.S." INDICATES CELLARS CANNOT BE SERVED.
- THE CONTRACTOR SHALL NOTIFY THE BUREAU OF HIGHWAYS, HOWARD COUNTY AT 410 313-2450 AT LEAST FIVE WORKING DAYS BEFORE ANY OPEN CUT OF ANY COUNTY ROAD OR BORING/JACKING OPERATION IN COUNTY ROADS FOR LAYING WATER/SEWER MAINS OR HOUSE CONNECTION THE APPROVAL OF THESE DRAWINGS WILL CONSTITUTE COMPLIANCE WITH DPW REQUIREMENTS PER SECTION 18.114(A) OF THE HOWARD COUNTY CODE.

### SEDIMENT CONTROL NOTES

- FOR SEDIMENT CONTROL FOR THIS CONTRACT, SEE THE APPROVED ROAD CONSTRUCTION PLANS, F-95-95.
- MATERIALS FROM TRENCH EXCAVATION TO BE PLACED ON UPHILL SIDE OF THE TRENCH.
- CONTRACTOR TO BACKFILL, COMPACT AND STABILIZE IMMEDIATELY AFTER INSTALLATION OF PIPE. NO TRENCHES WILL BE LEFT OPEN AT THE END OF EACH DAY, EXCEPT THAT PORTION WHERE WORK HAS STOPPED.
- ANY SEDIMENT CONTROL FACILITIES ENCOUNTERED DURING PIPE CONSTRUCTION TO BE RETURNED TO ORIGINAL CONDITION IMMEDIATELY UPON COMPLETION OF THAT PORTION OF WORK.
- SEDIMENT CONTROL MEASURES FOR THIS CONTRACT WILL BE IMPLEMENTED IN ACCORDANCE WITH SECTION 219 OF THE HOWARD COUNTY STANDARD SPECIFICATION AND AS PER ROAD CONSTRUCTION PLANS.



SEWER HOUSE CONNECTION TABLE

LOT #	FRONTAGE	SHC #	PL. MCB.	LOT #	FRONTAGE	SHC #	PL. MCB.
1	20.62	350.7	354.6	36	20.00	348.4	352.3
2	20.04	350.5	354.4	37	20.58	348.6	352.5
3	20.04	350.4	354.3	38	20.58	349.8	353.7
4	20.03	350.2	354.1	39	20.00	349.7	353.6
5	20.59	350.2	354.1	40	20.58	349.9	353.8
6	20.58	349.9	353.8	41	20.58	351.7	354.6
7	20.00	349.9	353.8	42	20.00	352.5	356.4
8	20.00	349.7	353.6	43	20.00	352.8	356.7
9	20.58	349.6	353.5	44	20.58	353.6	357.5
10	20.58	349.3	353.3	45	20.58	354.2	358.1
11	20.07	349.3	353.2	46	20.00	355.0	358.9
12	20.40	349.3	353.2	47	20.00	355.3	359.2
13	16.39	349.3	353.2	48	20.00	355.9	359.8
14	16.16	349.3	353.2	49	20.00	356.0	359.9
15	20.51	349.3	353.2	50	20.00	356.2	360.1
16	20.12	349.3	353.2	51	20.58	356.2	360.1
17	20.01	349.3	353.2	52	20.58	361.7	365.6
18	20.17	349.3	353.2	53	20.00	361.9	365.8
19	21.23	349.3	353.2	54	20.00	362.0	365.9
20	20.59	349.3	353.2	55	20.00	362.2	366.1
21	20.00	349.3	353.2	56	20.00	362.3	366.2
22	20.00	349.3	353.2	57	20.58	365.5	369.4
23	20.00	349.3	353.2	58	20.58	366.2	370.1
24	20.00	349.3	353.2	59	20.00	366.1	370.0
25	20.58	349.3	353.2	60	20.00	365.4	369.3
26	20.58	349.3	353.2	61	20.00	365.2	369.1
27	20.00	349.3	353.2	62	20.00	364.6	368.5
28	20.00	349.3	353.2	63	20.00	364.3	368.2
29	20.00	349.3	353.2	64	20.58	363.7	367.6
30	20.58	349.3	353.2	65	20.58	363.1	367.0
31	20.58	349.3	353.2	66	20.00	362.5	366.4
32	20.00	349.3	353.2	67	20.00	362.1	366.0
33	20.00	349.3	353.2	68	20.00	361.6	365.5
34	20.00	349.3	353.2	69	20.58	361.4	365.3
35	20.00	349.3	353.2				

\* FROM SHC TO BE UTILIZED.

# CRADLEROCK FARM

## LOTS 1-70

### CONTRACT NO. 24-3440 -D

### 6th ELECTION DISTRICT

### HOWARD COUNTY, MARYLAND

REVIEWED FOR HOWARD COUNTY SOIL CONSERVATION DISTRICT AND MEETS TECHNICAL REQUIREMENTS.

Patricia Engle, U.S. SOIL CONSERVATION SERVICE, 8/3/95

THIS DEVELOPMENT PLAN IS APPROVED FOR EROSION DISTRICT.

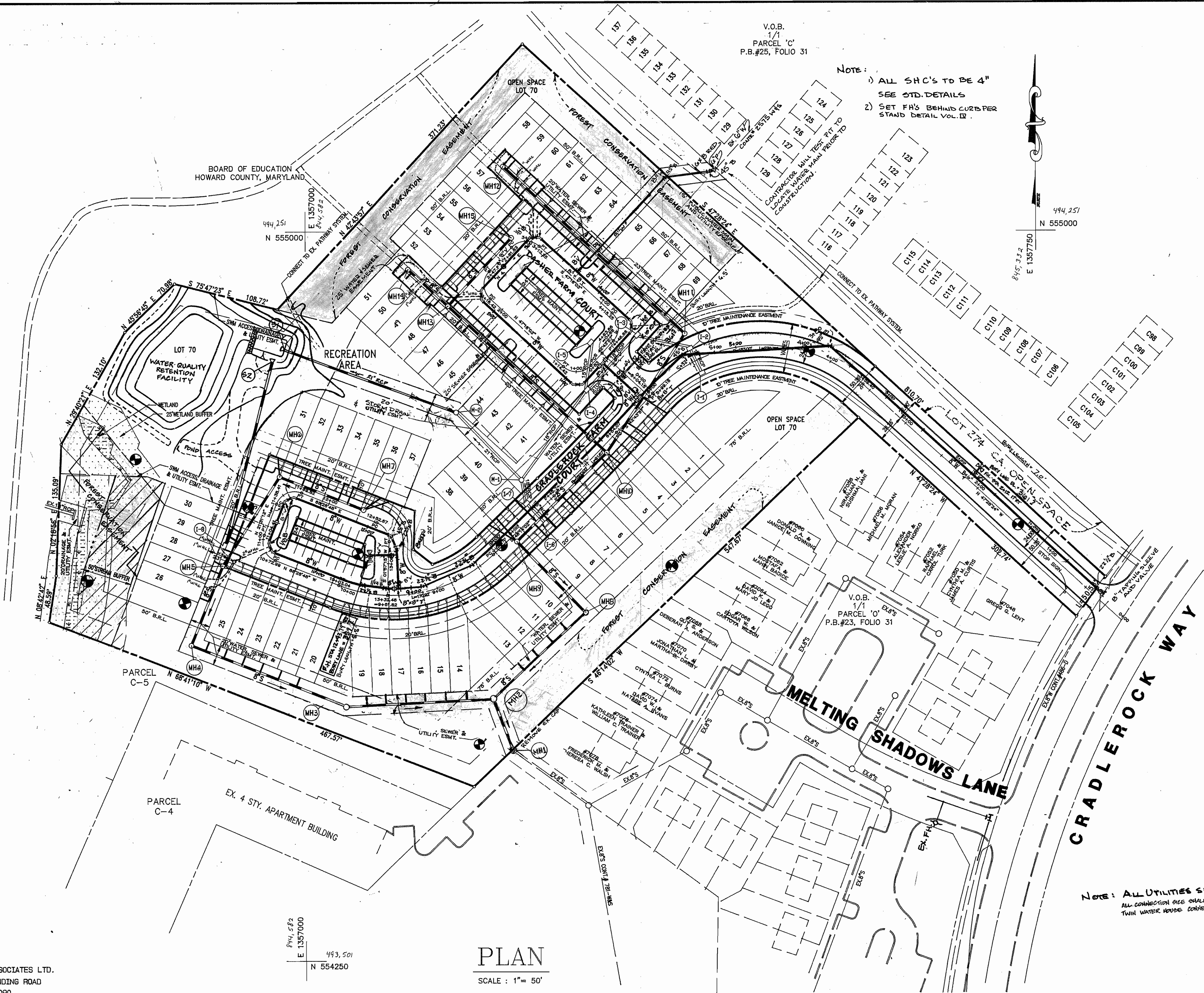
APPROVED: John R. Roberts, HOWARD SOIL CONSERVATION DISTRICT, 8/3/95

OWNER/DEVELOPER: DASHER GREEN ASSOCIATES LTD., 839 ELKRIE LANDING ROAD, LINTHICUM, MD 21090

DEPARTMENT OF PUBLIC WORKS HOWARD COUNTY, MARYLAND	DEPARTMENT OF PLANNING & ZONING HOWARD COUNTY, MARYLAND	PREPARED BY: AMERICAN LAND DEVELOPMENT AND ENGINEERING INC. CIVIL ENGINEERING CONSULTANTS AND LAND PLANNER	DES : D.C.W.	DRN : D.C.W.	CHK : B.S.	DATE :	DEW 11-28-95	REV ELEV @ P. LOT 24-27	NO. 38	REVISION	DATE	600'SCALE MAP NO. 38	BLOCK NO. 22	<b>CRADLEROCK FARM</b> LOTS 1-70. CONTRACT NO. 24-3440 -D 6th ELECTION DISTRICT HOWARD COUNTY, MARYLAND	SCALE AS SHOWN SHEET 1 OF 4
---	--	---	--------------	--------------	------------	--------	--------------	-------------------------	--------	----------	------	----------------------	--------------	---	--------------------------------

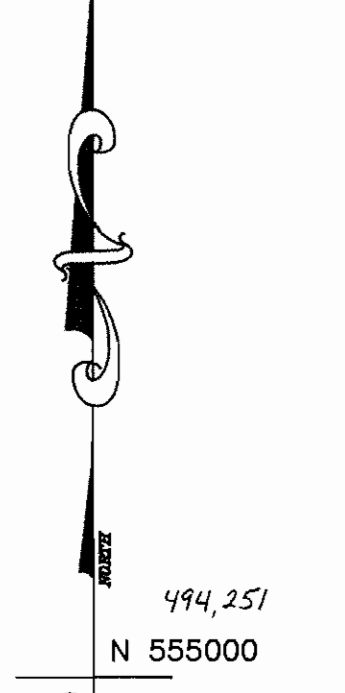


3440 ws/2 Cradlerock Farm



V.O.B.  
1/1  
PARCEL 'C'  
P.B.#25, FOLIO 31

NOTE:  
1) ALL SHC'S TO BE 4"  
SEE STD. DETAILS  
2) SET FHS BEHIND CURB PER  
STAND DETAIL VOL. IX



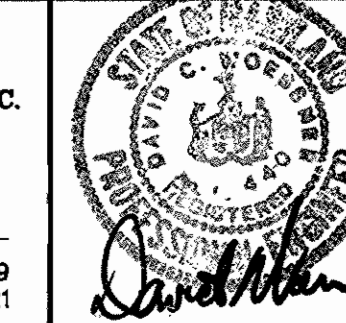
PLAN  
SCALE: 1" = 50'

OWNER/DEVELOPER: DASHER GREEN ASSOCIATES LTD.  
839 ELKRIDGE LANDING ROAD  
LINTHICUM, MD 21090

DEPARTMENT OF PUBLIC WORKS  
HOWARD COUNTY, MARYLAND  
7-3195  
DATE

DEPARTMENT OF PLANNING & ZONING  
HOWARD COUNTY, MARYLAND  
7-3195  
DATE

PREPARED BY:  
AMERICAN LAND DEVELOPMENT AND ENGINEERING INC.  
CIVIL ENGINEERING CONSULTANTS  
AND LAND PLANNER  
671-A MAIN STREET  
LAUREL, MD. 20707  
BALT. (410) 880-3039  
WASH. (301) 853-1221



DES: D.C.W.  
DRN: W.D.F.  
CHK: R.A.  
DATE: 9-18-92  
BY: NO. 1  
REV: SHC LOC. TO PROVIDE RECHARGE LOTS 63, 67, 65, 41, 43  
REVISION

WATER AND SEWER  
MAIN PLAN  
600'SCALE MAP NO. 32 BLOCK NO.

CRADLEROCK FARM  
LOTS 1-70  
CONTRACT NO. 24-3440-D  
6th ELECTION DISTRICT  
HOWARD COUNTY, MARYLAND

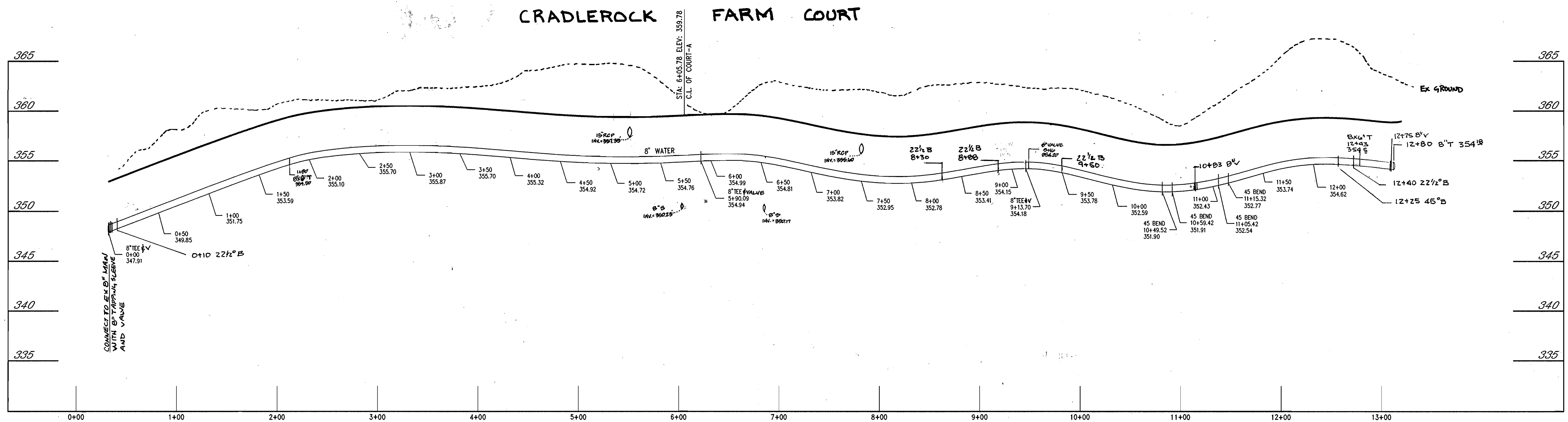
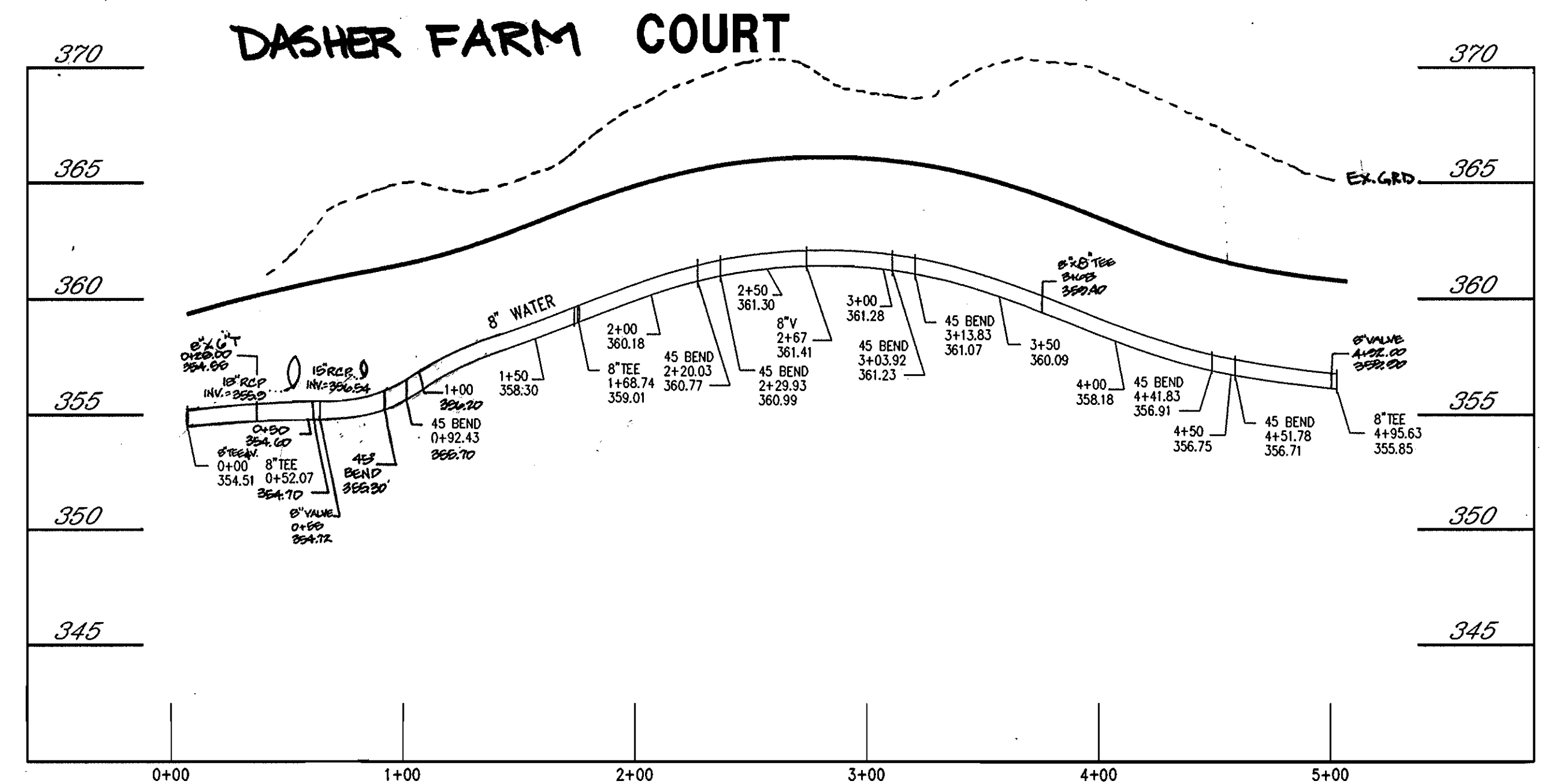
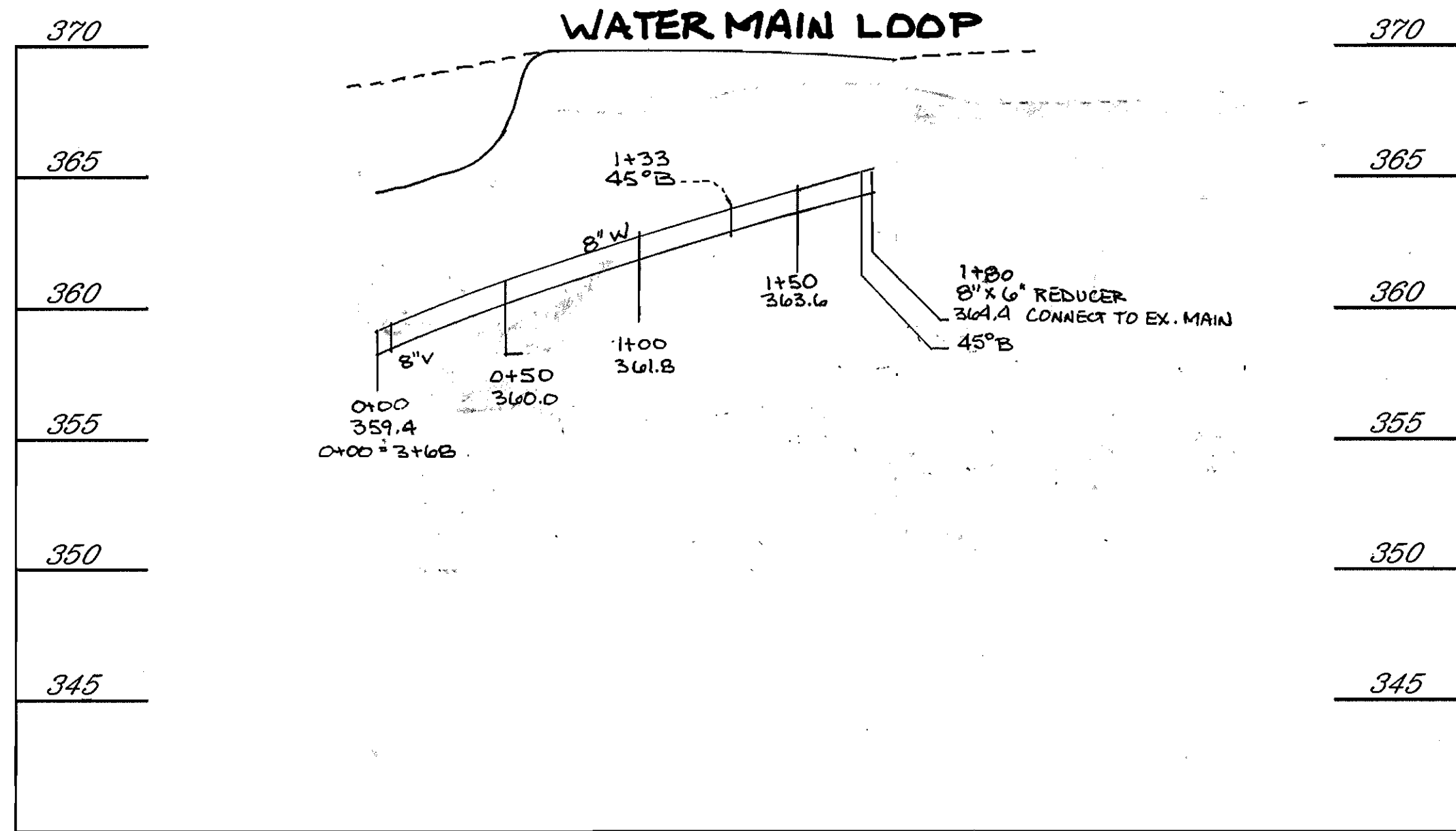
SCALE AS SHOWN  
SHEET 2 OF 4

SEWER HOUSE CONNECTION TABLE			
LOT NO.	STATION	OFFSET	INV. @ P.L.
MH1 (INV. = 338.6) TO MH2 (INV. = 339.4) STA. 0+00 TO STA. 1+46.4 N 55496.5411 E 1357170.3286 N 554518.2152 E 1357025.3530			
14	0+16	10.0 RT.	338.7
15	0+48	10.0 RT.	338.8
16	0+80	10.0 RT.	338.9
17	0+84	10.0 RT.	339.0
18	1+10	10.0 RT.	339.1
19	1+20	10.0 RT.	339.2
MH3 (INV. = 339.4) TO MH4 (INV. = 340.2) STA. 0+00 TO STA. 1+53.7 N 554518.2152 E 1357025.3530 N 554574.5941 E 1356882.5744			
20	0+38.11	10.00 RT.	339.8
21	0+38.11	10.00 RT.	339.9
22	0+75.11	10.00 RT.	340.0
23	0+98.11	10.00 RT.	340.1
24	1+18.11	10.00 RT.	340.2
25	1+38.11	10.00 RT.	340.3
MH5 (INV. = 340.2) TO MH6 (INV. = 345.0) STA. 0+00 TO STA. 0+58.4 N 554574.5941 E 1356882.5744 N 554656.8085 E 1356914.9925			
26	0+49.21	10.00 LT.	343.1
27	0+79.79	10.00 LT.	344.7
28	# MH6	10.10 LT.	345.2
MH7 (INV. = 345.0) TO MH8 (INV. = 346.0) STA. 0+00 TO STA. 1+58.1 N 554656.8085 E 1356914.9925 N 554747.7160 E 1356973.4119			
29	0+29.97	15.93 LT.	345.6
30	0+39.68	17.86 LT.	345.8
31	# MH5	20.02 LT.	346.2
MH9 (INV. = 346.0) TO MH10 (INV. = 348.0) STA. 0+00 TO STA. 1+58.1 N 554747.7160 E 1356973.4119 N 554713.8066 E 1356959.4084			
32	0+24.58	18.00 LT.	346.9
33	0+34.58	18.00 LT.	347.1
34	0+44.58	18.00 LT.	347.3
35	0+74.58	18.00 LT.	348.0
36	# MH6	21.71 LT.	348.4
37	# MH6	28.53 LT.	348.6
MH11 (INV. = 346.0) TO MH12 (INV. = 348.5) STA. 0+00 TO STA. 1+46.4 N 55496.5411 E 1357170.3286 N 554688.2317 E 1357286.9365			
13	0+44	10.00 LT.	347.7
12	0+64	10.00 LT.	348.2
11	0+84	10.00 LT.	348.6
10	1+05	10.00 LT.	349.3
MH13 (INV. = 349.1) TO MH14 (INV. = 349.8) STA. 0+00 TO STA. 1+29.7 N 55481.4417 E 1357216.8138 N 554732.2975 E 1357395.3189			
38	# MH8	33.19 LT.	349.8
39	# MH8	38.11 LT.	349.7
9	0+25.35	18.13 RT.	349.6
40	0+28.60	30.64 LT.	349.9
8	0+38.25	19.63 RT.	349.7
7	0+65.35	18.63 RT.	349.9
6	0+75.35	18.63 RT.	349.9
5	1+21.52	18.05 RT.	350.2
MH15 (INV. = 349.8) TO MH16 (INV. = 350.5) STA. 0+00 TO STA. 1+46.4 N 554772.2975 E 1357309.3189 N 554894.2796 E 1357369.4875			
4	# MH9	18.27 RT.	350.2
3	0+27.65	23.00 RT.	350.4
2	0+37.47	24.93 RT.	350.3
1	0+67.76	29.65 RT.	350.7
MH17 (INV. = 350.5) TO MH18 (INV. = 356.0) STA. 0+00 TO STA. 2+53.9 N 554894.2796 E 1357369.4875 N 555065.4552 E 1357203.1041			
69	0+32.59	10.00 RT.	351.4
58	0+42.59	10.00 RT.	351.6
67	0+72.59	10.00 RT.	352.3
66	0+82.59	10.00 RT.	352.5
65	1+13.17	10.00 RT.	353.1
64	1+38.02	10.00 RT.	353.7
63	1+68.75	10.00 RT.	354.6
62	1+78.75	10.00 RT.	354.6
61	2+08.75	10.00 RT.	355.2
60	2+18.75	10.00 RT.	355.4
59	2+48.75	10.00 RT.	356.1
58	# MH11	11.18 RT.	356.2
57	# MH11	11.42 LT.	356.2
MH19 (INV. = 349.8) TO MH20 (INV. = 355.6) STA. 0+00 TO STA. 2+21.9 N 554772.2975 E 1357309.3189 N 554922.8317 E 1357146.3721			
41	0+65.89	10.00 LT.	351.7
42	0+36.47	10.00 LT.	352.5
43	1+06.47	10.00 LT.	352.8
44	1+37.05	10.00 LT.	353.6
45	1+62.05	10.00 LT.	354.2
46	1+92.63	10.00 LT.	355.0
47	2+02.63	10.00 LT.	355.3
MH21 (INV. = 355.6) TO MH22 (INV. = 356.0) STA. 0+00 TO STA. 0+55.8 N 554922.8317 E 1357146.3721 N 554960.6929 E 1357105.3690			
48	0+10.79	10.00 LT.	355.9
49	0+20.79	10.00 LT.	356.0
50	0+50.79	10.00 LT.	356.2
51	# MH13	11.18 LT.	356.2
MH23 (INV. = 361.2) TO MH24 (INV. = 361.9) STA. 0+00 TO STA. 0+96.0 N 554922.8317 E 1357146.3721 N 554993.3466 E 1357211.5155			
52	0+16.42	18.00 LT.	361.7
53	0+47.00	18.00 LT.	361.9
54	0+57.00	18.00 LT.	362.0
55	0+67.00	18.00 LT.	362.2
56	# MH14	18.03 LT.	362.3

NOTE: ALL UTILITIES SHOWN ARE PUBLIC.  
ALL CONNECTIONS SHALL BE 1" FOR BRICK AND 1/2" FOR  
TWIN WATER HOUSE CONNECTION.



3440 ws/3 Cradlerock Farm



**PROFILE**

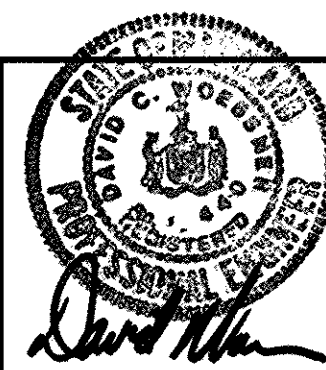
SCALE : HOR. 1" = 50'  
VERT. 1" = 5'

OWNER/DEVELOPER: DASHER GREEN ASSOCIATES LTD.  
839 ELKTRIDGE LANDINGS ROAD  
LINTHICUM, MD 21090

DEPARTMENT OF PUBLIC WORKS  
HOWARD COUNTY, MARYLAND

DEPARTMENT OF PLANNING & ZONING  
HOWARD COUNTY, MARYLAND

PREPARED BY :  
AMERICAN LAND DEVELOPMENT AND ENGINEERING INC.  
CIVIL ENGINEERING CONSULTANTS  
AND LAND PLANNER



671-A MAIN STREET LAUREL, MD. 20707  
BALT. (410) 880-3039  
WASH. (301) 953-1221

DES : D.C.W.			
DRN : W.D.F.			
CHK : R.A.			
DATE : 9-18-92	BY	NO.	REVISION

**WATER & SEWER  
MAIN PROFILES**

600'SCALE MAP NO. 3e BLOCK NO. 22

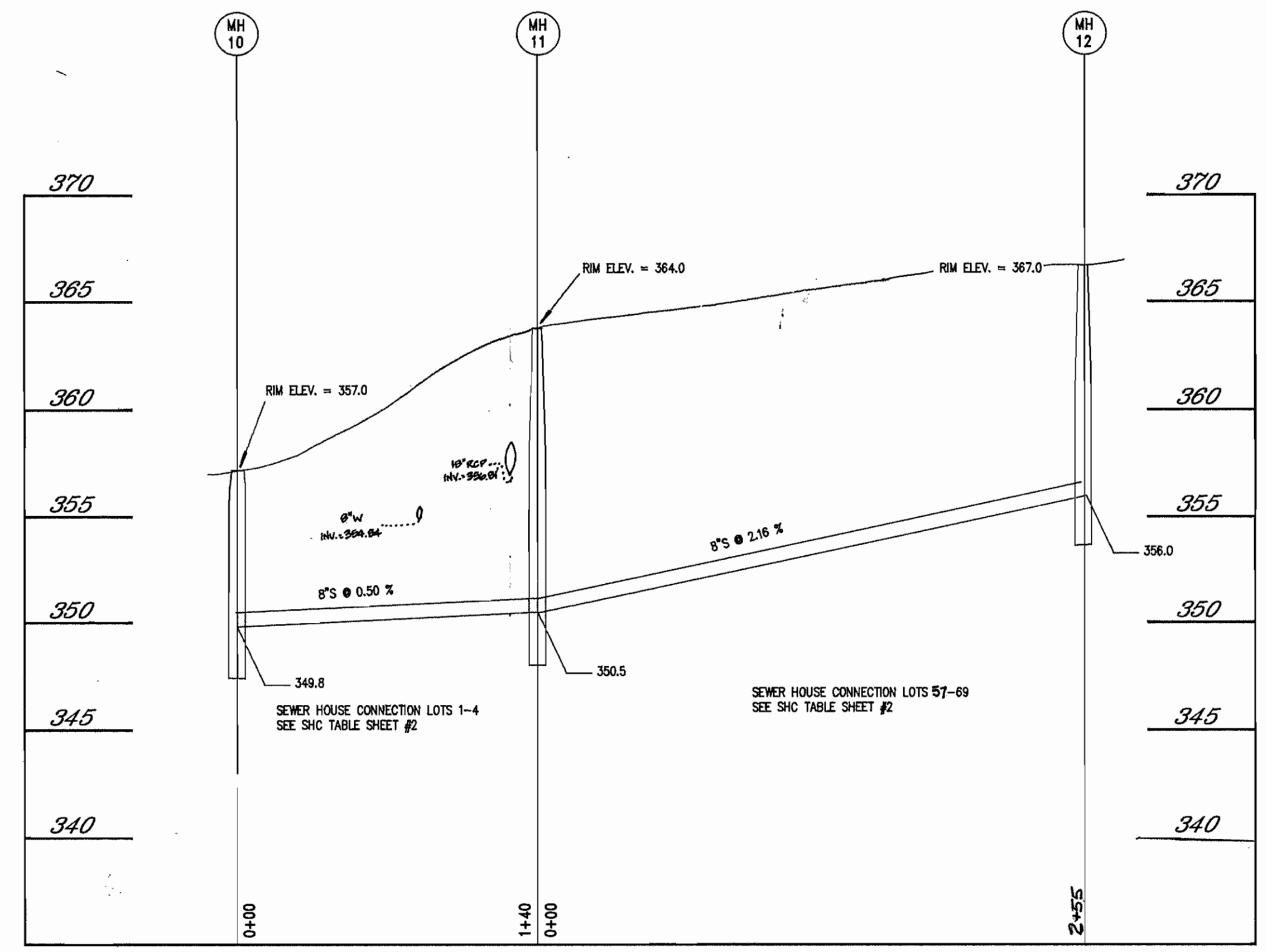
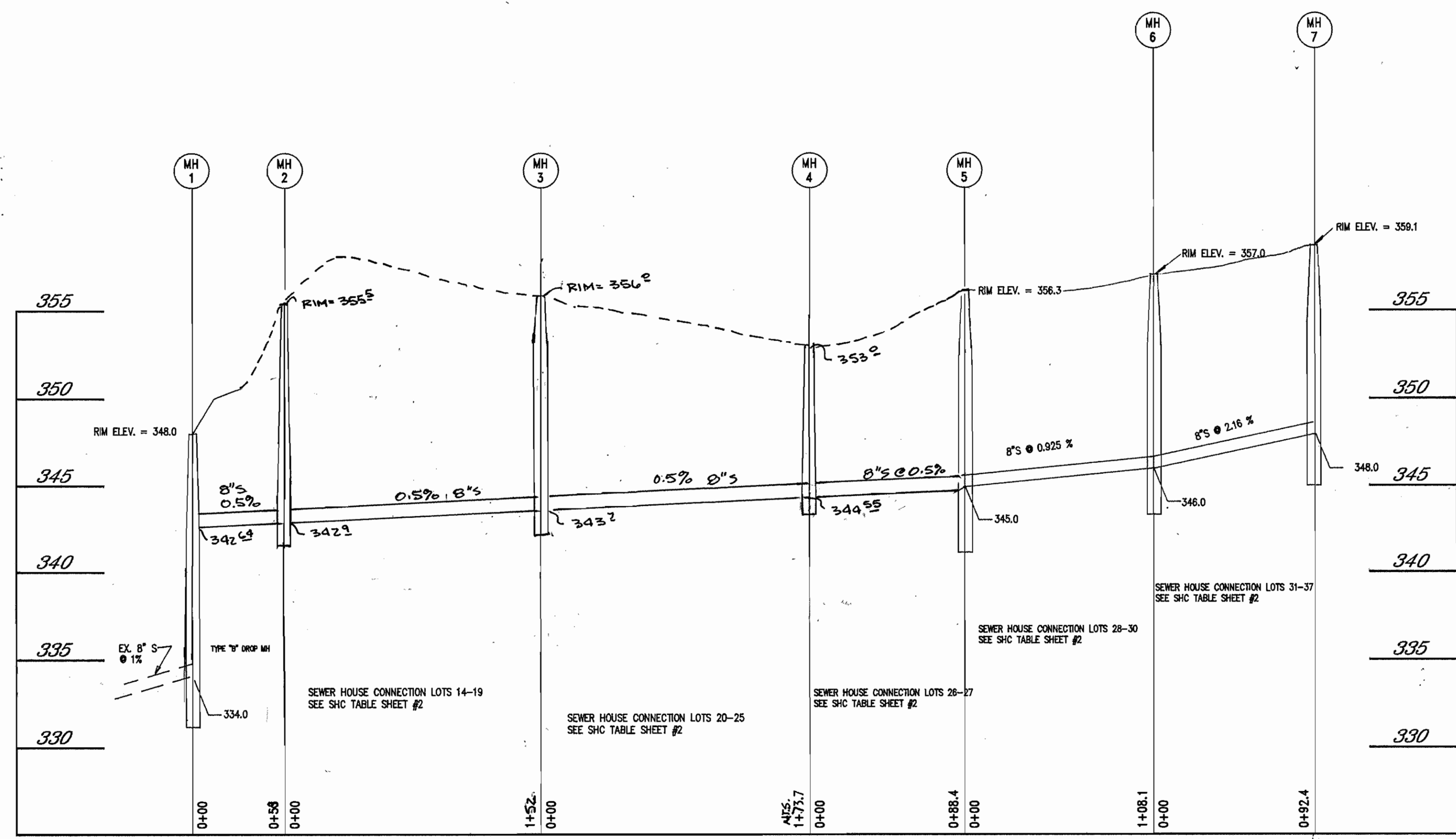
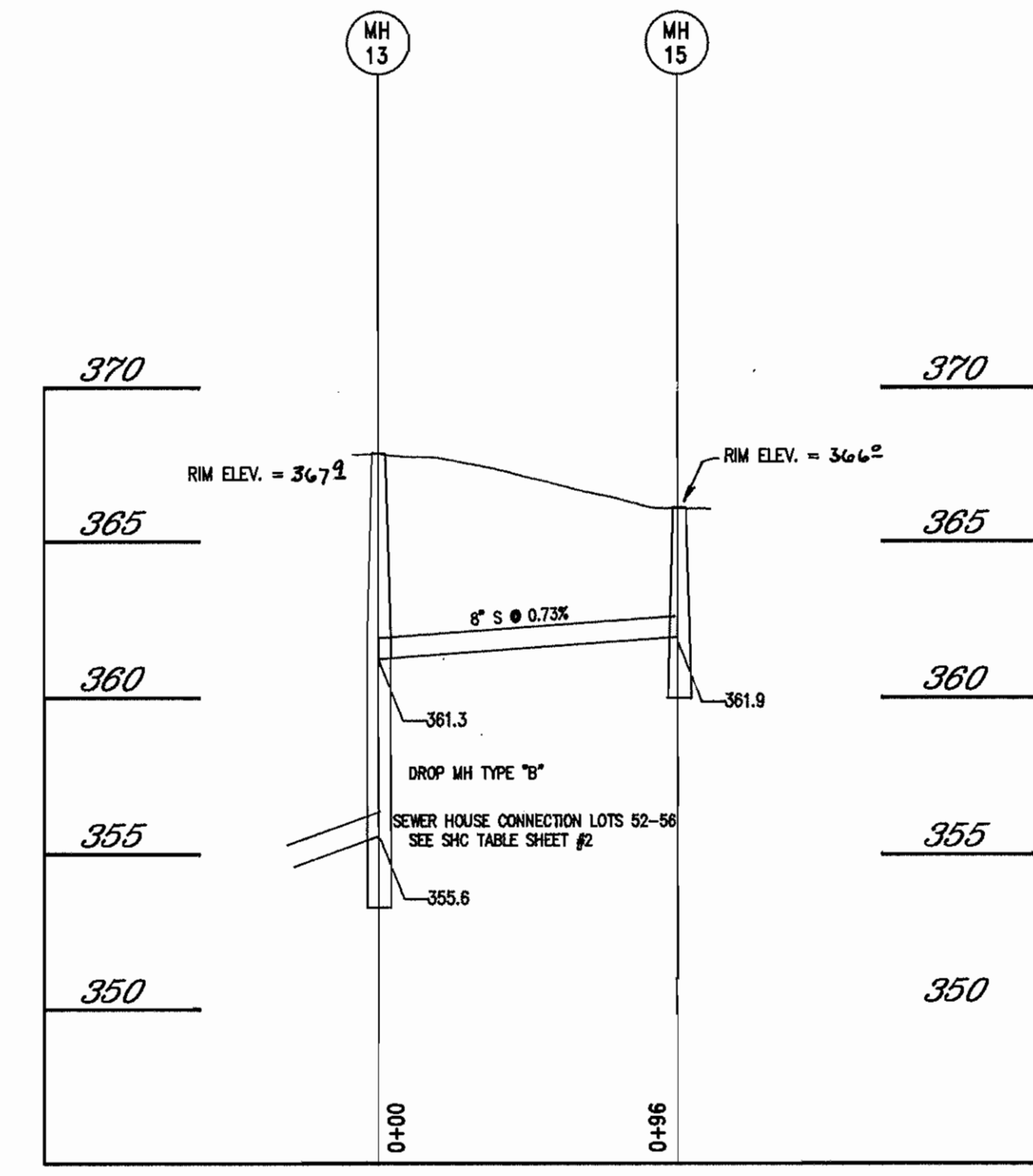
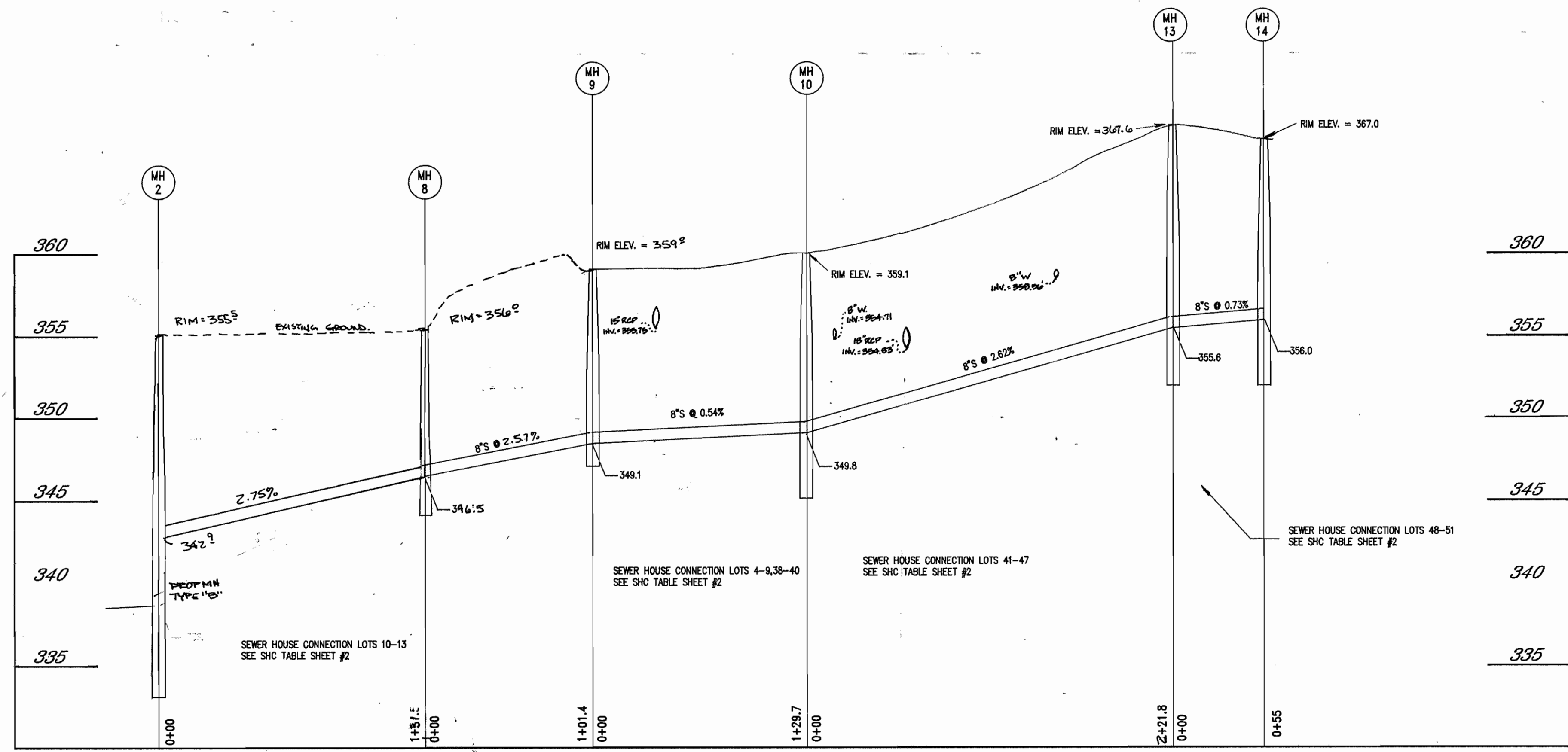
**CRADLEROCK FARM**  
LOTS 1-70  
CONTRACT NO. 24-3440-D  
6th ELECTION DISTRICT  
HOWARD COUNTY, MARYLAND

SCALE AS SHOWN  
SHEET 3 OF 4

Michael J. ... 7-31-95  
CHIEF, BUREAU OF UTILITIES DATE

David M. ... 8/19/95  
CHIEF, DEVELOPMENT ENGINEERING DIVISION DATE

3440 ws/4 Cradlerock Farm



PROFILE  
SCALE: HOR. 1" = 50'  
VERT. 1" = 5'

OWNER/DEVELOPER: DASHER GREEN ASSOCIATES LTD.  
839 ELKRIDGE LANDING ROAD  
LINTHICUM, MD 21090

DEPARTMENT OF PUBLIC WORKS  
HOWARD COUNTY, MARYLAND  
7-31-95  
DATE

DEPARTMENT OF PLANNING & ZONING  
HOWARD COUNTY, MARYLAND  
4/15  
DATE

PREPARED BY:  
AMERICAN LAND DEVELOPMENT AND ENGINEERING INC.  
CIVIL ENGINEERING CONSULTANTS  
AND LAND PLANNER  
671-A MAIN STREET  
LAUREL, MD. 20707  
BALT. (410) 880-3039  
WASH. (301) 953-1221



DES: D.C.W.  
DRN: D.C.W.  
CHK: B.S.  
DATE: 7/14/94  
BY: NO. DATE

WATER & SEWER  
MAIN PROFILES  
600'SCALE MAP NO. 36 BLOCK NO. 22

CRADLEROCK FARM  
LOTS 1-70  
CONTRACT NO. 24-3440-D  
8th ELECTION DISTRICT  
HOWARD COUNTY, MARYLAND

SCALE AS SHOWN  
SHEET 4 OF 4

# 3440 CRADLEROCK FARM / AS-BUILT INFO.

LOT #	SHC'S	WHC'S	LOT #	SHC'S	WHC'S
1	75' TO MH 10 171' TO I-7	61' TO MH 10 157' TO I-7	42	85' TO I-5 62' TO I-4	60' TO I-4 84' TO I-5
2	45' TO MH 10 141' TO I-7	58' TO MH 10 154' TO I-7	43	60' TO I-4 87' TO I-5	77' TO I-4 90' TO I-5
3	38' TO MH 10 132' TO I-7	26' TO MH 10 115' TO I-7	44	95' TO I-4 99' TO I-5	78' TO I-4 91' TO I-5
4	18' TO MH 10 102' TO I-7	24' TO MH 10 116' TO I-7	45	50' TO MH 13 114' TO MH 14	45' TO MH 13 100' TO MH 14
5	20' TO MH 10 94' TO I-7	28' TO MH 10 81' TO I-7	46	28' TO MH 13 84' TO MH 14	42' TO MH 13 57' TO MH 14
6	54' TO MH 10 55' TO I-7	45' TO MH 10 65' TO I-7	47	20' TO MH 13 74' TO MH 14	11' TO MH 13 61' TO MH 14
7	66' TO MH 10 49' TO I-7	70' TO MH 10 42' TO I-7	48	14' TO MH 13 45' TO MH 14	10' TO MH 13 58' TO MH 14
8	91' TO MH 10 39' TO I-7	81' TO MH 10 42' TO I-7	49	23' TO MH 13 13' TO MH 14	35' TO MH 13 26' TO MH 14
9	107' TO MH 10 89' TO I-7	119' TO MH 10 44' TO I-7	50	51' TO MH 13 14' TO MH 14	42' TO MH 13 21' TO MH 14
10	26' TO MH 3 106' TO MH 2	30' TO MH 3 120' TO 8" VALVE	51	57' TO MH 13 15' TO MH 14	65' TO MH 13 71' TO MH 14
11	45' TO MH 3 86' TO MH 2	54' TO MH 3 100' TO 8" VALVE	52	27' TO MH 13 84' TO MH 15	38' TO MH 13 63' TO MH 15
12	65' TO MH 3 65' TO MH 2	52' TO MH 3 98' TO 8" VALVE	53	51' TO MH 13 98' TO MH 15	29' TO MH 13 66' TO MH 15
13	42' TO MH 2 81' TO MH 3	84' TO MH 3 69' TO 8" VALVE	54	66' TO MH 13 44' TO MH 15	74' TO MH 13 30' TO MH 15
14	32' TO MH 2 125' TO MH 8	87' TO MH 3 67' TO 8" VALVE	55	87' TO MH 13 21' TO MH 15	76' TO MH 13 25' TO MH 15
15	58' TO MH 2 103' TO MH 8	119' TO MH 3 43' TO 8" VALVE	56	99' TO MH 13 17' TO MH 15	112' TO MH 13 22' TO MH 15
16	72' TO MH 2 84' TO MH 8	125' TO MH 3 42' TO 8" VALVE	57	13' TO MH 13 43' TO MH 15	114' TO MH 13 24' TO MH 15
17	93' TO MH 2 64' TO MH 8	153' TO MH 3 34' TO 8" VALVE	58	12' TO MH 12 85' TO MH 15	15' TO MH 12 88' TO MH 15
18	111' TO MH 2 27' TO MH 8	155' TO MH 3 36' TO 8" VALVE 11+01	59	14' TO MH 12 79' TO MH 15	24' TO MH 12 72' TO MH 15
19	130' TO MH 2 24' TO MH 3	134' TO 8" VALVE 9+00 43' TO 8" VALVE 11+01	60	37' TO MH 12 64' TO MH 15	31' TO MH 12 68' TO MH 15
20	NO DATA	98' TO 8" VALVE 9+00 77' TO 8" VALVE 11+01	61	48' TO MH 12 61' TO MH 15	57' TO MH 12 61' TO MH 12
21	NO DATA	79' TO 8" VALVE 9+00 96' TO 8" VALVE 11+01	62	77' TO MH 12 63' TO MH 15	68' TO MH 12 63' TO MH 12
22	93' TO MH 4 19' TO SHC 23	111' TO 8" VALVE 9+00 70' TO 8" VALVE 11+01	63	86' TO MH 12 67' TO MH 15	71' TO MH 12 100' TO MH 12
23	19' TO SHC 22 75' TO MH 4	113' TO 8" VALVE 9+00 69' TO 8" VALVE 11+01	64	115' TO MH 12 83' TO MH 15	74' TO MH 12 103' TO MH 12
24	20' TO SHC 23 56' TO MH 4	60' TO 8" VALVE 11+38 22' TO I-8			
25	18' TO MH 4 115' TO MH 3	60' TO 8" VALVE 11+38 41' TO I-8			
26	109' TO 8" VALVE 59' TO I-8	90' TO 8" VALVE 11+38 49' TO I-8			
27	85' TO 8" VALVE 30' TO I-8	93' TO 8" VALVE 11+38 41' TO I-8			
28	76' TO 8" V 11+38 21' TO I-8	68' TO 8" V 11+38 13' TO I-8			
29	65' TO 8" V 11+38 14' TO I-8	61' TO 8" V 11+38 6' TO I-8			
30	50' TO 8" V 11+38 24' TO I-8	46' TO 8" V 11+38 33' TO I-8			
31	67' TO 8" V 11+38 24' TO I-8	80' TO MH 7 64' TO 8" V 11+38			
32	65' TO 8" V 11+38 70' TO MH 7	85' TO MH 7 64' TO 8" V 11+38			
33	67' TO 8" V 11+38 61' TO MH 7	47' TO MH 7 71' TO 8" V 11+38			
34	82' TO 8" V 11+38 34' TO MH 7	46' TO MH 7 73' TO 8" V 11+38			
35	80' TO 8" V 11+38 26' TO MH 7	18' TO MH 7 99' TO 8" V 11+38			
36	117' TO 8" V 11+38 21' TO MH 7	18' TO MH 7 101' TO 8" V 11+38			
37	101' TO MH 7 67' TO 8" V 11+38	38' TO MH 7 131' TO 8" V 11+38			
38	36' TO MH 9 56' TO I-6	39' TO MH 9 68' TO I-6			
39	36' TO MH 9 53' TO I-6	37' TO MH 9 44' TO I-6			
40	45' TO MH 9 48' TO I-6	38' TO MH 9 43' TO I-6			
41	85' TO I-5 47' TO I-4	49' TO I-4 84' TO I-5			

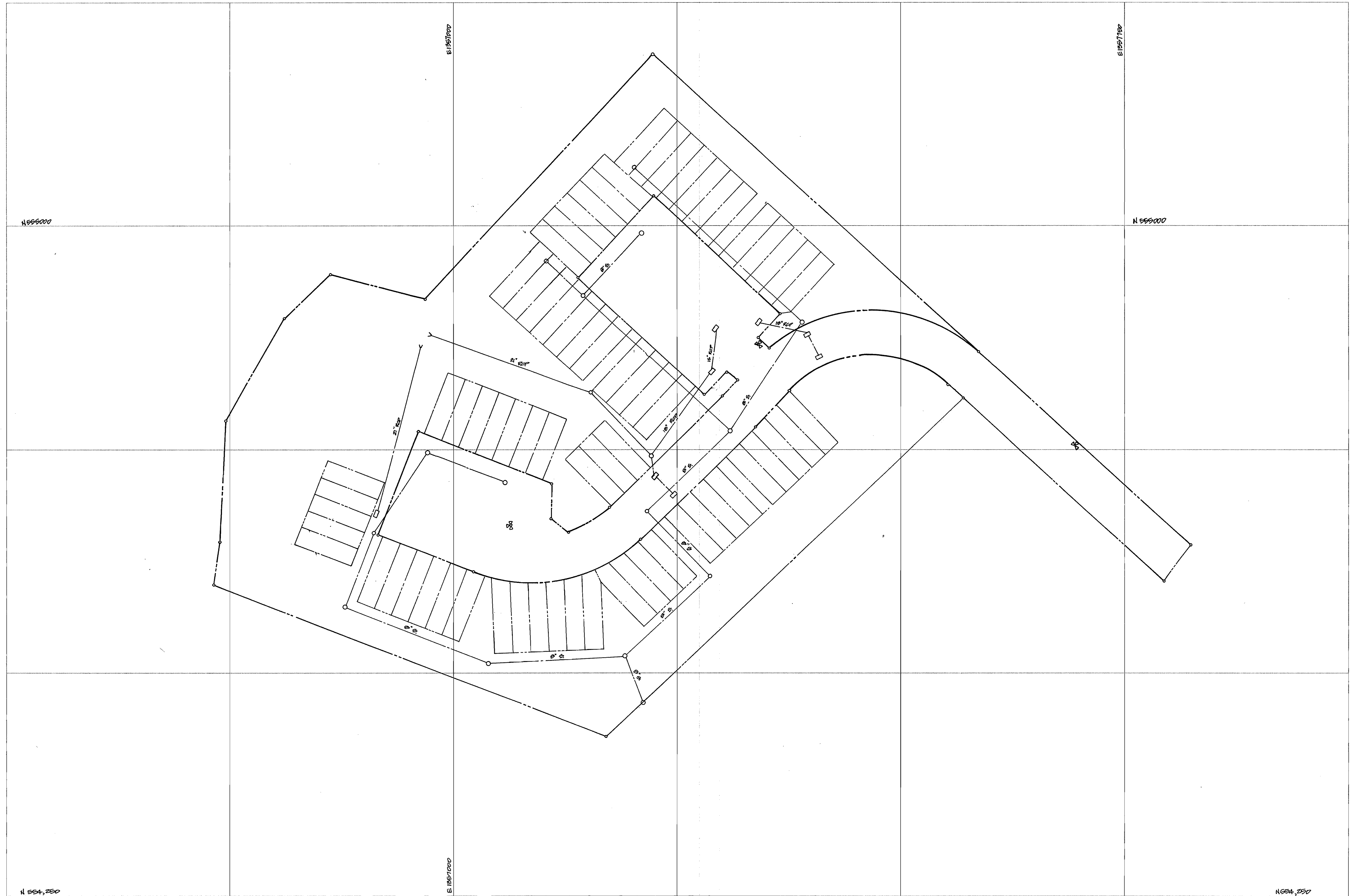
DES:				SEWER & WATER		CRADLEROCK FARM		SCALE AS SHOWN	
DRN:				AS-BUILTS		CONTRACT NO. 24-3440 -D		SHEET 4A OF 4	
CHK:									
DATE:		BY NO.		REVISION		DATE		600' SCALE MAP NO. _____ BLOCK NO. _____	

DEPARTMENT OF PUBLIC WORKS HOWARD COUNTY, MARYLAND			
DIRECTOR OF PUBLIC WORKS _____ DATE _____		CHIEF, BUREAU OF ENGINEERING _____ DATE _____	

08487  
JAY WHITE MARSH, MD.

3440 POS. SH. T. - CRADLEROCK FARM

TOPOGRAPHIC  
SURVEY  
PLAT



LEGEND

- SUBDIVISION BOUNDARY
- LOT BOUNDARY
- ROAD CENTERLINE
- EDGE OF ROAD

SUBD. NAME: CRADLEROCK FARM

SEC: \_\_\_\_\_ AREA: \_\_\_\_\_

STREET NAME: CRADLEROCK FARM COURT

CAP. PROJ. NO. \_\_\_\_\_

CONTRACT NO. 24-3440-0

FIELD BOOK NO. \_\_\_\_\_

SCALE: 1" = 50'

PREPARED BY:

AMERICAN LAND DEVELOPMENT & ENGINEERING

671-A MAIN STREET, LAUREL, MD

(410) 880-3030 (301) 283-1821

4		
3		
2		
1		
NO.	REVISION	DATE

8		
7		
6		
5		
NO.	REVISION	DATE

SHEET NO. \_\_\_\_\_ OF \_\_\_\_\_