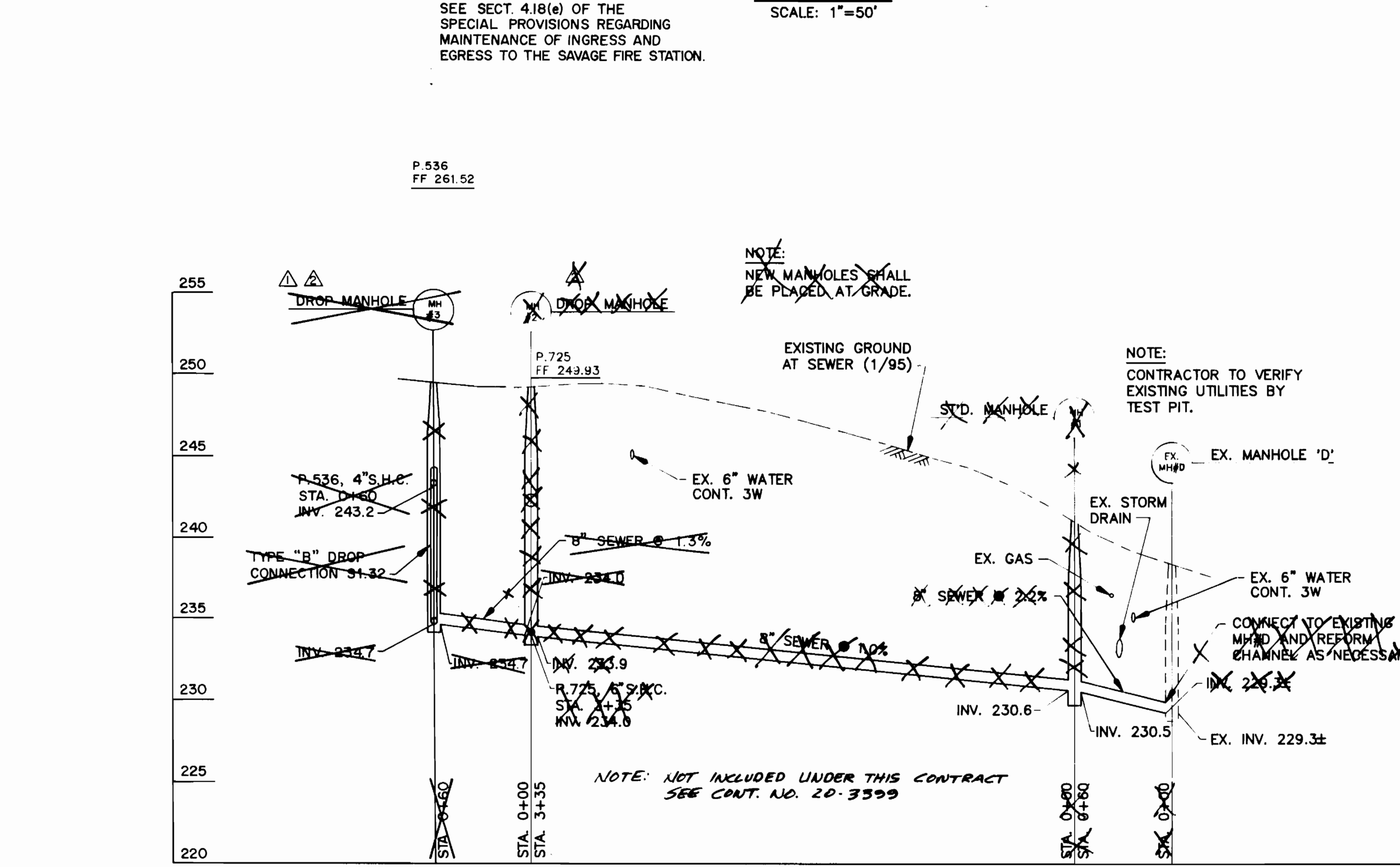
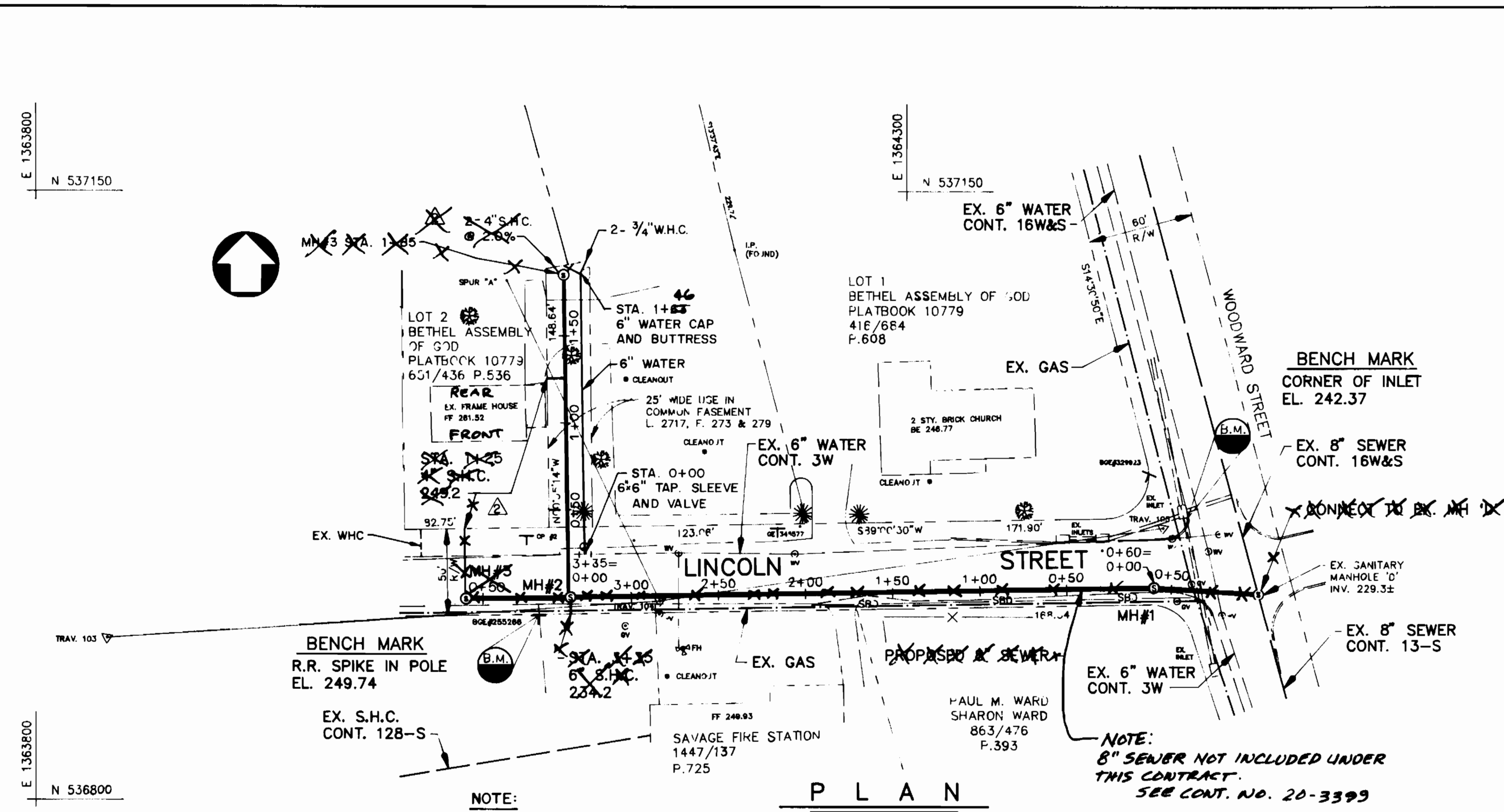


3439 ws/1 Lincoln st. H2O ext. C.P.# S-6694

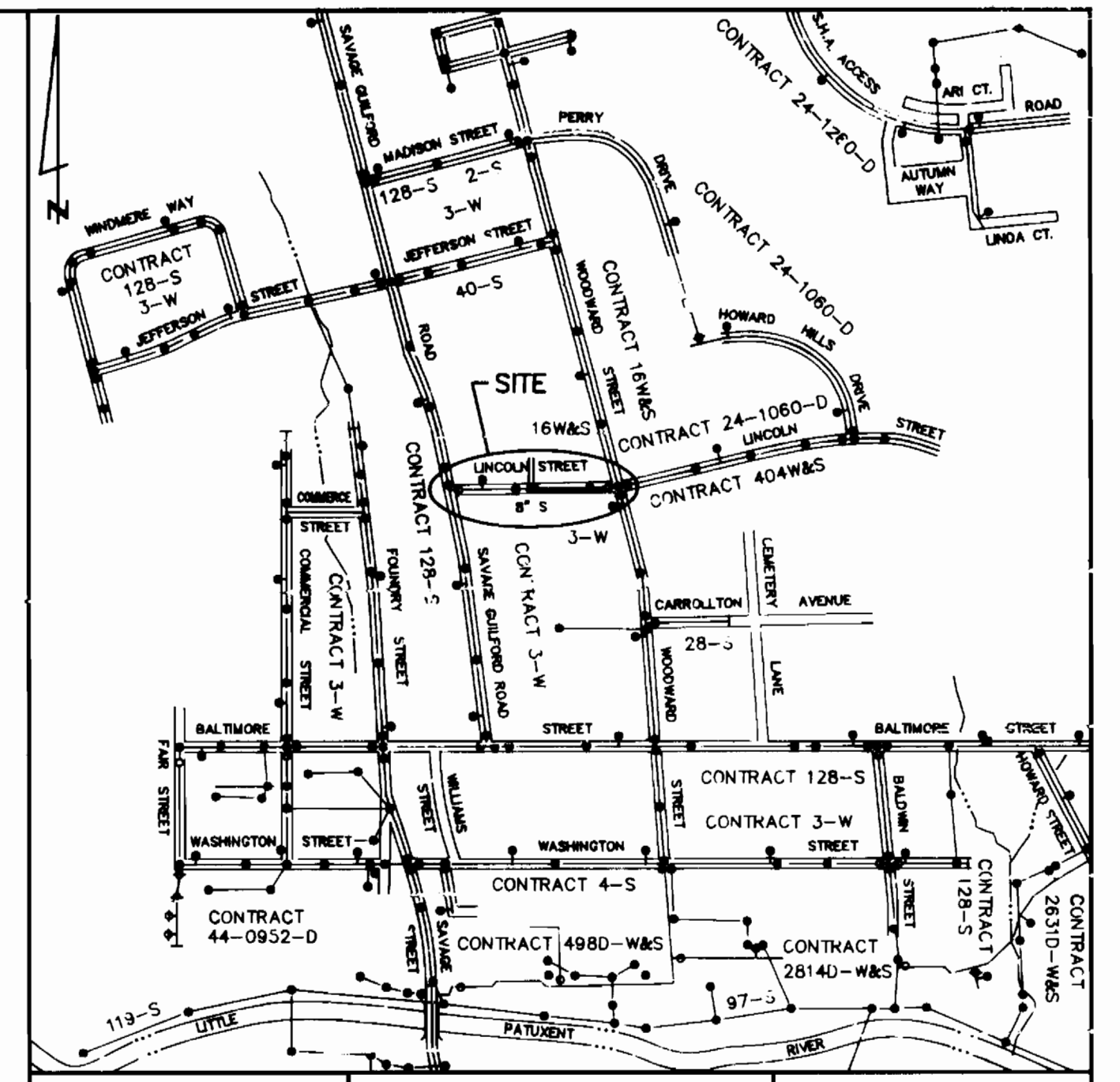


PROFILE
SCALE: 1"=50' HORIZ.
1"=5' VERT.

GENERAL NOTES

- PART I**
- APPROXIMATE LOCATION OF EXISTING MAINS ARE SHOWN. THE CONTRACTOR SHALL TAKE ALL NECESSARY PRECAUTIONS TO PROTECT EXISTING MAINS AND SERVICES AND MAINTAIN UNINTERRUPTED SERVICE. ANY DAMAGE INCURRED SHALL BE REPAIRED IMMEDIATELY TO THE SATISFACTION OF THE ENGINEER AT THE CONTRACTOR'S EXPENSE.
 - ALL HORIZONTAL CONTROLS ARE BASED ON MARYLAND STATE COORDINATES.
 - ALL VERTICAL CONTROLS ARE BASED ON U.S.C.S. DATA.
 - ALL PIPE ELEVATIONS SHOWN ARE INVERT ELEVATIONS UNLESS OTHERWISE NOTED ON THE PLANS.
 - CLEAR ALL UTILITIES BY A MINIMUM OF 6'. CLEAR ALL POLES BY 2'-0" MINIMUM OR TUNNEL AS REQUIRED. THE OWNER HAS CONTACTED UTILITY COMPANIES AND HAS MADE ARRANGEMENTS FOR BRACING OF POLES AS SHOWN ON THE DRAWINGS. IN THE EVENT THE CONTRACTOR'S WORK REQUIRES THE BRACING OF ADDITIONAL POLES, ANY COST INCURRED BY THE OWNER FOR THE BRACING OF ADDITIONAL POLES OR DAMAGES SHALL BE DEDUCTED FROM MONEY OWED THE CONTRACTOR. THE CONTRACTOR SHALL COORDINATE WITH THE UTILITY COMPANIES TO SCHEDULE THE BRACING OF THE POLES.
 - FOR DETAILS NOT SHOWN ON THE DRAWINGS, AND FOR MATERIALS AND CONSTRUCTION METHODS, USE HOWARD COUNTY DESIGN MANUAL, VOLUME IV, STANDARD SPECIFICATIONS AND DETAILS FOR CONSTRUCTION (LATEST EDITION). THE CONTRACTOR SHALL HAVE A COPY OF VOLUME IV ON THE JOB.
 - WHERE TEST PITS HAVE BEEN MADE ON EXISTING UTILITIES, THEY ARE NOTED BY THE SYMBOL AT THE LOCATION OF THE TEST PIT. A NOTE OR NOTES CONTAINING THE RESULTS OF THE TEST PIT OR PITS IS INCLUDED ON THE DRAWINGS. EXISTING UTILITIES IN THE VICINITY OF THE PROPOSED WORK FOR WHICH TEST PITS HAVE NOT BEEN DUG SHALL BE LOCATED BY THE CONTRACTOR TWO WEEKS IN ADVANCE OF CONSTRUCTION OPERATIONS AT HIS OWN EXPENSE.
 - CONTRACTOR SHALL NOTIFY THE FOLLOWING UTILITY COMPANIES OR AGENCIES AT LEAST FIVE WORKING DAYS BEFORE STARTING WORK SHOWN ON THESE PLANS:
 AT&T 865-3863
 BOBE (CONTRACTOR SERVICES) 850-4620
 BOBE - UNDERGROUND DAMAGE CONTROL 787-9068
 BUREAU OF UTILITIES (DPW) 313-4900
 CHESAPEAKE & POTOMAC TELEPHONE CO. 597-8585
 COLONIAL PIPELINE CO. 795-1390
 MISS UTILITY 1-800-257-7777
 STATE HIGHWAY ADMINISTRATION 531-5533
 - TREES AND SHRUBS ARE TO BE PROTECTED FROM DAMAGE TO MAXIMUM EXTENT. TREES AND SHRUBS LOCATED WITHIN THE CONSTRUCTION STRIP ARE NOT TO BE REMOVED OR DAMAGED BY THE CONTRACTOR.
 - CONTRACTOR SHALL REMOVE TREES, STUMPS AND ROOTS ALONG LINE OF EXCAVATION. PAYMENT FOR SUCH REMOVAL SHALL BE INCLUDED IN THE UNIT PRICE BID FOR CONSTRUCTION OF THE MAIN.
 - THE CONTRACTOR SHALL NOTIFY THE BUREAU OF HIGHWAYS, HOWARD COUNTY, AT (410)313-2450 AT LEAST FIVE WORKING DAYS BEFORE ANY OPEN CUT OF ANY COUNTY ROAD OR BORING/JACKING OPERATION IN COUNTY ROADS FOR LAYING WATER/SEWER MAINS OR HOUSE CONNECTIONS. THE APPROVAL OF THESE DRAWINGS WILL CONSTITUTE COMPLIANCE WITH DPW REQUIREMENTS PER SECTION 18.114(G) OF THE HOWARD COUNTY CODE.

- PART II SEWER**
- ALL SEWER MAINS SHALL BE D.I.P. OR P.V.C. UNLESS OTHERWISE NOTED.
 - ALL MANHOLES SHALL BE 4'-0" INSIDE DIAMETER UNLESS OTHERWISE NOTED.
 - FORCE MAINS SHALL BE D.I.P. ONLY.
 - MANHOLES SHOWN WITH 12" AND 18" WALLS ARE FOR BRICK MANHOLES ONLY.
 - MANHOLES DESIGNATED "W" IN PLAN AND PROFILE SHALL HAVE WATER TIGHT FRAME AND COVER. STANDARD DETAIL U.S.52 WHERE WATER TIGHT MANHOLE FRAME AND COVER ARE USED, SET TOP OF FRAME 1'-6" ABOVE FINISHED GRADE UNLESS OTHERWISE NOTED ON THE DRAWINGS.
 - HOUSES WITH THE SYMBOL "C.N.S." INDICATES THAT CELLAR CANNOT BE SERVED.



TYPE OF BUILDING:
RESIDENTIAL
NO. OF W.H.C.'S: 2
NO. OF S.H.C.'S: 3

SEWER AND WATER CODES FOR COUNTY USE ONLY
WATER NO. C01
SEWER NO. 5060000

QUANTITIES

ITEM	UNIT	ESTIMATE	AS-BUILT	MATERIAL SUPPLIER
6" SEWER MAIN	L.F.	580	NOT INCLUDED UNDER THIS CONTRACT	
4" STD. MANHOLE	EACH	2		
4" DROP MANHOLE	EACH	2		
4" S.H.C.	L.F.	20	SEE CONT. NO. 20-3099	
6" S.H.C.	L.F.	10		
6" WATER MAIN	L.F.	163	146	BEAVER SUPPLY - PIP
6" TAP SLEEVE	EACH	1	1	" " " "
AND VALVE				MUELLER
3/4" W.H.C.	L.F.	12	30	W.F. WILSON - CONTRACTOR SUPPLY - COPPER

- SEQUENCE OF CONSTRUCTION**
- CONTACT HOWARD COUNTY BUREAU OF CONSTRUCTION INSPECTION (313-1670) PRIOR TO STARTING DATE.
 - INSTALL EROSION AND SEDIMENT CONTROL DEVICES AS PER SECTION 219 OF THE HOWARD COUNTY DESIGN MANUAL VOL. IV.
 - EXCAVATE AND INSTALL PROPOSED 6" WATER AND 8" SEWER MAIN.
 - RESTORE PAVING AND EARTH TRENCHES TO THEIR ORIGINAL CONDITION AS PER HOWARD COUNTY STANDARDS.
 - UPON PERMISSION FROM HOWARD COUNTY SEWERS CONTROL INSPECTOR, REMOVE SEDIMENT CONTROL DEVICES.
 - FINE GRADE ALL DISTURBED AREAS AND STABILIZE WITH PERMANENT SEEDING.

DEVELOPER'S CERTIFICATION	ENGINEER'S CERTIFICATION
<p>I/WE CERTIFY THAT ALL DEVELOPMENT AND CONSTRUCTION WILL BE DONE ACCORDING TO THIS PLAN, AND THAT ANY RESPONSIBLE PERSONNEL INVOLVED IN THE CONSTRUCTION PROJECT WILL HAVE A CERTIFICATE OF THE ENVIRONMENT APPROVED TRAINING PROGRAM FOR THE CONTROL OF SEDIMENT AND EROSION BEFORE BEGINNING THE PROJECT. I ALSO AUTHORIZE PERSONNEL ON-SITE INSPECTION BY THE HOWARD SOIL CONSERVATION DISTRICT.</p> <p><i>Patricia G. L...</i> 1/25/95 CHIEF, BUREAU OF UTILITIES</p>	<p>I/WE CERTIFY THAT ALL DEVELOPMENT AND CONSTRUCTION WILL BE DONE ACCORDING TO THIS PLAN, AND THAT ANY RESPONSIBLE PERSONNEL INVOLVED IN THE CONSTRUCTION PROJECT WILL HAVE A CERTIFICATE OF THE ENVIRONMENT APPROVED TRAINING PROGRAM FOR THE CONTROL OF SEDIMENT AND EROSION BEFORE BEGINNING THE PROJECT. I ALSO AUTHORIZE PERSONNEL ON-SITE INSPECTION BY THE HOWARD SOIL CONSERVATION DISTRICT.</p> <p><i>John C. Wallace</i> 1-25-95 JOHN C. WALLACE, P.E. DEPARTMENT OF PUBLIC WORKS</p>
<p>REVIEWED FOR HOWARD S.C.D. AND MEETS TECHNICAL REQUIREMENTS.</p> <p><i>John R. Robertson</i> 1/25/95 CHIEF, WATER AND SEWER DESIGN DIVISION</p>	<p>THIS DEVELOPMENT PLAN IS APPROVED FOR THE SOIL EROSION & SEDIMENT CONTROL BY THE HOWARD COUNTY SOIL CONSERVATION DISTRICT.</p> <p><i>John R. Robertson</i> 1/25/95 APPROVED HOWARD COUNTY S.C.D.</p>

DEPARTMENT OF PUBLIC WORKS
HOWARD COUNTY, MARYLAND

Patricia G. L... 1/25/95
 CHIEF, BUREAU OF UTILITIES

John R. Robertson 1-25-95
 CHIEF, WATER AND SEWER DESIGN DIVISION

WALLACE, MONTGOMERY & ASSOCIATES
110 WEST ROAD
TOWSON, MARYLAND 21204
(410) 494-3093

John C. Wallace 1/25/95
 PROFESSIONAL ENGINEER

DES:	WMA	ADDED	DELETED	ST'D	MANHOLE	DATE
J.C.W.	WMA	ADDED	DELETED	ST'D	MANHOLE	2/16/95
D.E.D.	WMA	ADDED	ST'D	MANHOLE	DELETED	4/21/95
J.C.W.	WH	ADDED	WATER ONLY	UNDER THIS CONTRACT		7/3/95
J.C.W.				6" WATER ONLY	1/25-3/4" W.H.C.'S	
				INSTALLED BY UTILITIES ON-CALL CONTRACTOR		

DATE: 1/95

BY: NO. REVISION DATE

FOOT SCALE MAP NO. 47 BLOCK NO. 11

LINCOLN STREET SEWER AND WATER EXTENSION
CAPITAL PROJECT S-6694
CONTRACT NO. 24-3439
ELECTION DISTRICT NO. 6
HOWARD COUNTY, MARYLAND

SCALE AS SHOWN

SHEET 1 OF 2

AS BUILT 9-20-95