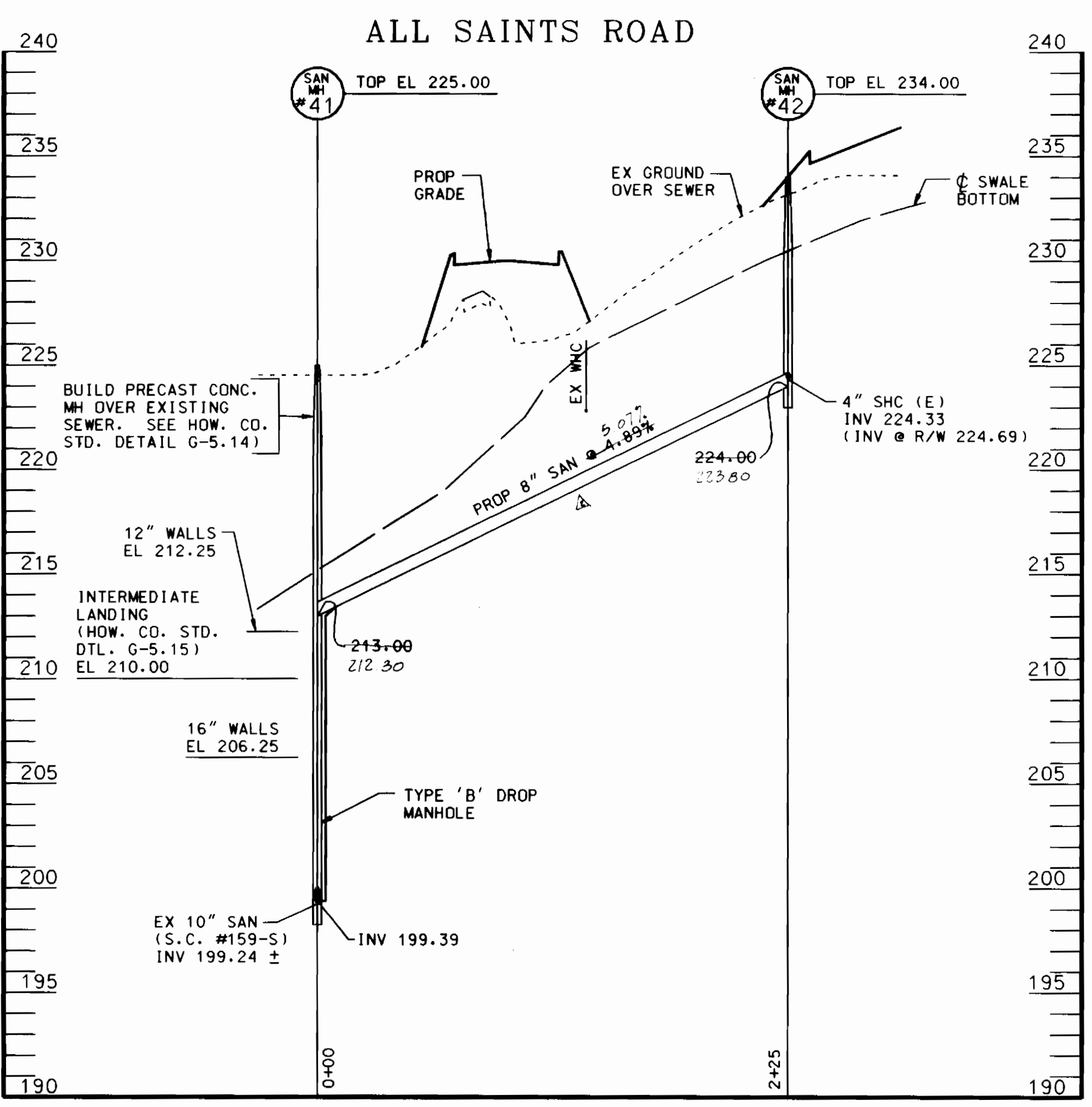
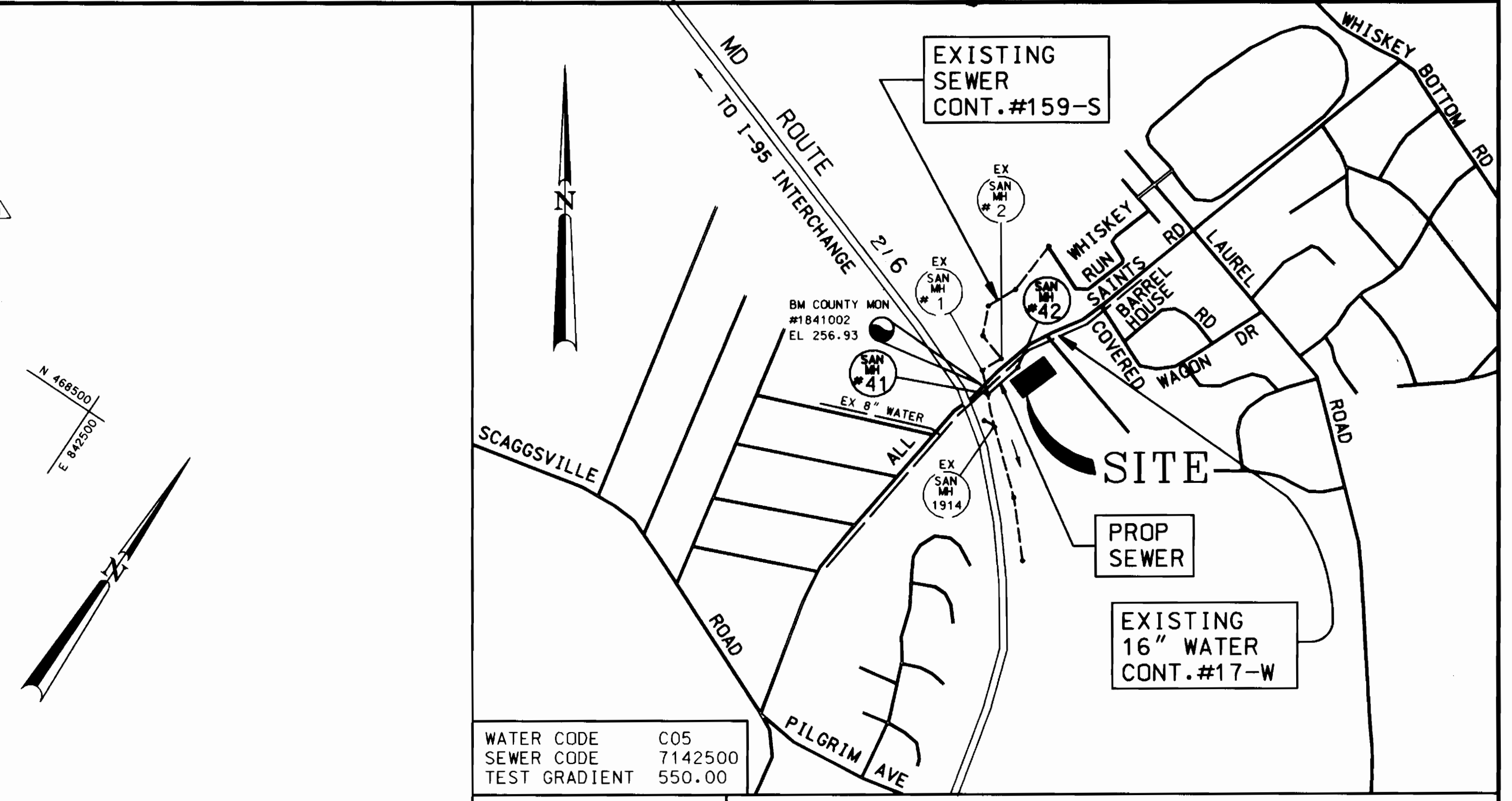
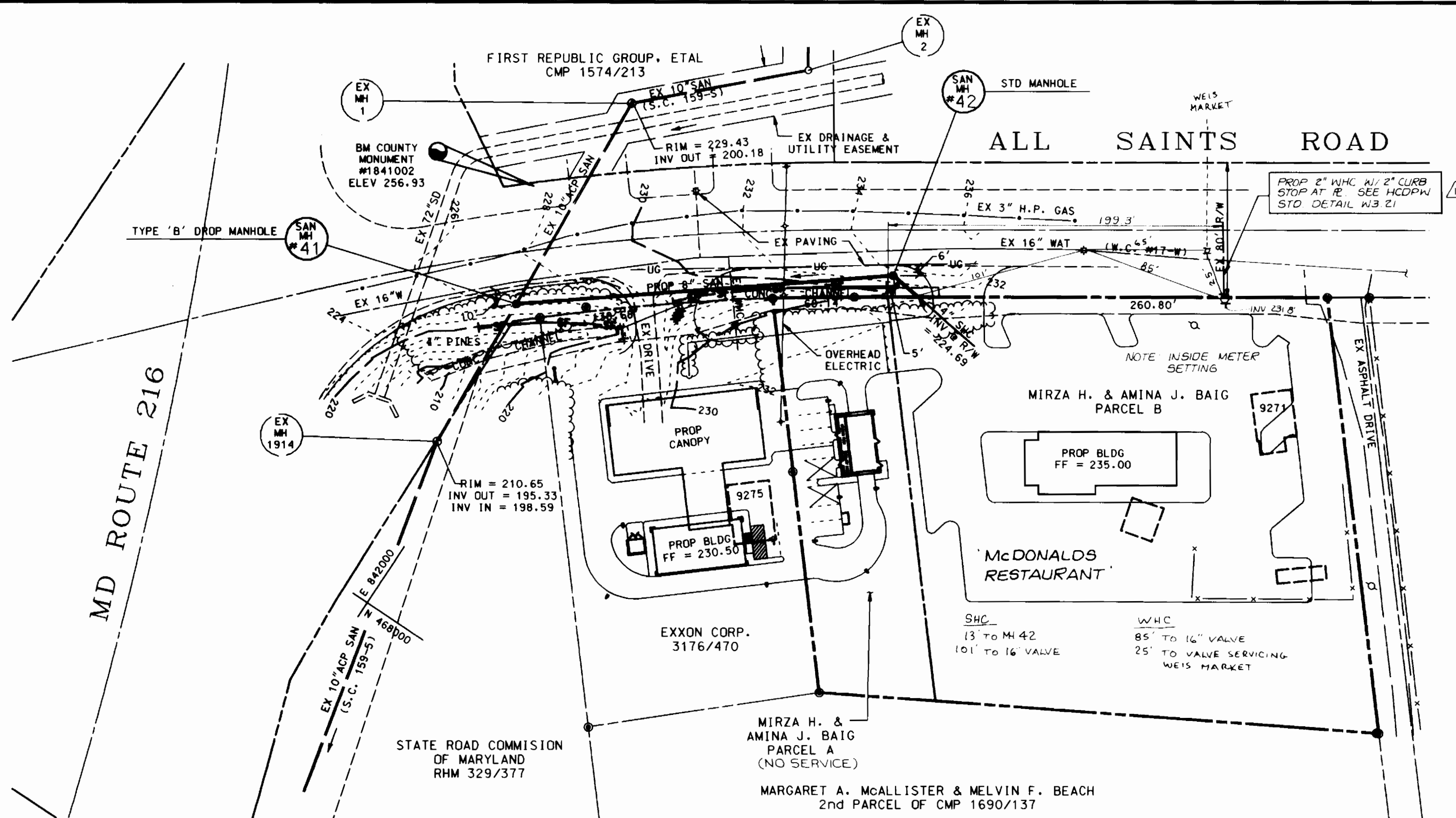


3433 ws/1 - ALL SAINTS RD. SEWER EXT. BAIG PROPERTY

AS-BUILT 2-13-96



**PLAN**  
SCALE: 1" = 50'

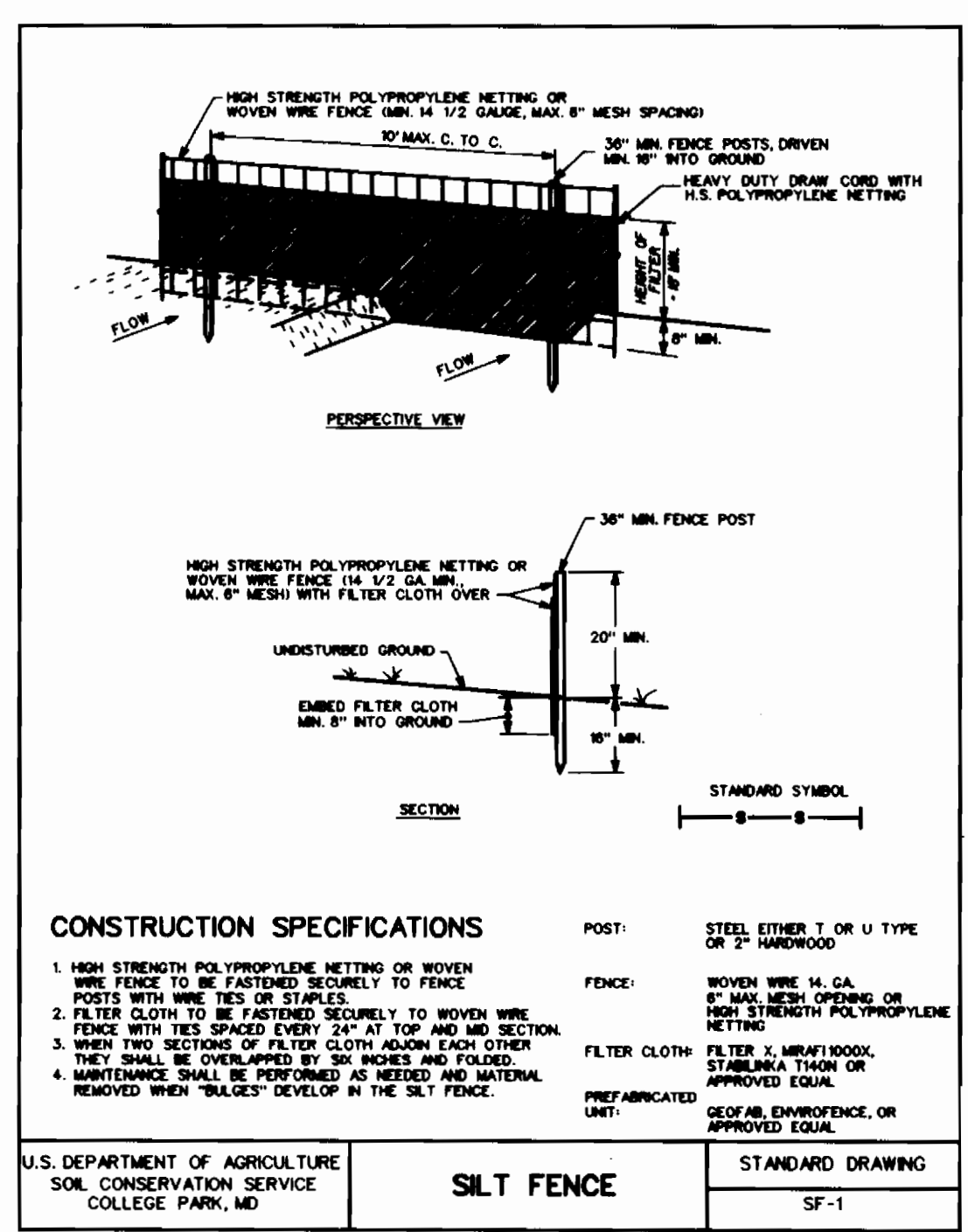
**PROFILE**: SCALE: HORIZ: 1" = 50'  
VERT: 1" = 5'

QUANTITIES				
ITEMS	QUANTITIES ESTIMATED	AS-BUILT		
		QUANTITIES	TYPE	MANUFACTURER/SUPPLIER
8" PVC SEWER	225 LF	223 LF	PVC	J.M. MFG.
MANHOLES	2 EA	2 EA	PRE-CAST	ATLANTIC PRECAST CONCRETE, INC.
VERTICAL DEPTH OF MANHOLES	36 VLF	36 VLF	PRE-CAST	ATLANTIC PRECAST CONCRETE, INC.
SEWER HOUSE CONNECTIONS	1 EA	1 EA	PVC	J.M. MFG.
WATER HOUSE CONN	1 EA	22 LF	TYPE "K"	CAMBRIDGE COPPER

NAME OF UTILITY CONTRACTOR: UTILITIES UNLIMITED, INC.  
SURVEY AND DRAFTING DIVISION AS-BUILT DATE: MARCH 10, 1992

INFORMATION BLOCK	
TYPE OF BUILDING:	COMMERCIAL
NO. OF LOTS/PARCELS:	2
NO. OF SEWER HOUSE CONNECTIONS:	1
NO. OF WATER HOUSE CONNECTIONS:	1
DRAINAGE AREA:	2.64 AC.
TREATMENT PLANT:	LITTLE PATUXENT WATER QUALITY MANAGEMENT CENTER; SAVAGE, HOWARD COUNTY

RESTORATION TABLE	
STA 0+00 TO STA 2+25	SEED & MULCH BOTH SIDES



SEDIMENT CONTROL MEASURES FOR THIS CONTRACT WILL BE IMPLEMENTED IN ACCORDANCE WITH SECTION 219 OF THE HOWARD COUNTY DESIGN MANUAL AND STANDARDS AND SPECIFICATIONS FOR SOIL EROSION AND SEDIMENT CONTROL IN DEVELOPING AREAS AND ALSO AS SHOWN ON THE GRADING AND SEDIMENT CONTROL PLAN.

REVIEWED FOR HOWARD COUNTY SOIL CONSERVATION DISTRICT AND MEETS TECHNICAL REQUIREMENTS.

*Patricia Engle/WM* 5/25/95  
U.S. SOIL CONSERVATION SERVICE DATE

PLAT REF. NO.: F-95-38  
SITE PLAN REF. NO.: SDP-95-83

THIS DEVELOPMENT PLAN IS APPROVED FOR EROSION AND SEDIMENT CONTROL BY HOWARD SOIL CONSERVATION DISTRICT.

APPROVED: *John P. Rhoton* 5/25/95  
HOWARD SOIL CONSERVATION DISTRICT DATE

- GENERAL NOTES**
- APPROXIMATE LOCATION OF EXISTING MAINS ARE SHOWN. THE CONTRACTOR SHALL TAKE ALL NECESSARY PRECAUTIONS TO PROTECT EXISTING MAINS AND SERVICES AND MAINTAIN UNINTERRUPTED SUPPLY. ANY DAMAGE INCURRED SHALL BE REPAIRED IMMEDIATELY TO THE SATISFACTION OF THE ENGINEER AT THE CONTRACTOR'S EXPENSE.
  - ALL HORIZONTAL CONTROLS ARE BASED ON MARYLAND STATE COORDINATES. (NORTH AMERICAN DATUM OF 1927 (NAD 27)).
  - ALL VERTICAL CONTROLS ARE BASED ON U.S.G.S. DATA.
  - ALL PIPE ELEVATIONS SHOWN ARE INVERT ELEVATIONS.
  - CLEAR ALL UTILITIES BY A MINIMUM OF 6". CLEAR ALL POLES BY 2'-0" MINIMUM OR TUNNEL AS REQUIRED. THE OWNER HAS CONTACTED THE UTILITY COMPANIES AND HAS MADE ARRANGEMENTS FOR BRACING OF POLES AS SHOWN ON THE DRAWINGS. IN THE EVENT THE CONTRACTOR'S WORK REQUIRES THE BRACING OF ADDITIONAL POLES, ANY COST INCURRED BY THE OWNER FOR BRACING OF ADDITIONAL POLES OR DAMAGES SHALL BE DEDUCTED FROM MONEY OWED THE CONTRACTOR. THE CONTRACTOR SHALL COORDINATE WITH THE UTILITY COMPANIES TO SCHEDULE THE BRACING OF THE POLES.
  - FOR DETAILS NOT SHOWN ON THE DRAWINGS, AND FOR MATERIALS AND CONSTRUCTION METHODS USE HOWARD COUNTY DESIGN MANUAL, VOLUME IV, STANDARD SPECIFICATIONS AND DETAIL FOR CONSTRUCTION (LATEST EDITION). THE CONTRACTOR SHALL HAVE A COPY OF VOLUME IV ON THE JOB.
  - WHERE TEST PITS HAVE BEEN MADE ON EXISTING UTILITIES, THEY ARE NOTED BY THE SYMBOL AT THE LOCATION OF THE TEST PIT. A NOTE OR NOTES CONTAINING THE RESULTS OF THE TEST PIT OR PITS IS INCLUDED ON THE DRAWINGS. EXISTING UTILITIES IN THE VICINITY OF THE PROPOSED WORK FOR WHICH TEST PITS HAVE NOT BEEN DUG SHALL BE LOCATED BY THE CONTRACTOR TWO WEEKS IN ADVANCE OF CONSTRUCTION OPERATIONS AT HIS OWN EXPENSE.
  - CONTRACTOR SHALL NOTIFY THE FOLLOWING UTILITY COMPANIES OR AGENCIES AT LEAST FIVE (5) WORKING DAYS BEFORE STARTING WORK SHOWN ON THESE PLANS:
 

STATE HIGHWAY ADMINISTRATION	531-5533
BGE CONTRACTOR SERVICES	850-4620
BGE UNDER GROUND DAMAGE CONTROL	787-5068
MISS UTILITY	1-800-257-7777
COLONIAL PIPELINE CO.	795-1390
HOWARD COUNTY DEPARTMENT OF PUBLIC WORKS BUREAU OF UTILITIES	313-4900
  - TREES AND SHRUBS ARE TO BE PROTECTED FROM DAMAGE TO MAXIMUM EXTENT. TREES AND SHRUBS LOCATED WITHIN THE CONSTRUCTION STRIP ARE NOT TO BE REMOVED OR DAMAGED BY THE CONTRACTOR.
  - CONTRACTOR SHALL REMOVE TREES, STUMPS AND ROOTS ALONG LINE OF EXCAVATION. PAYMENT FOR SUCH REMOVAL SHALL BE INCLUDED IN THE UNIT PRICE BID FOR CONSTRUCTION OF THE MAIN.
  - THE CONTRACTOR SHALL NOTIFY THE BUREAU OF HIGHWAYS, HOWARD COUNTY, AT (410) 313-2450 AT LEAST FIVE (5) WORKING DAYS BEFORE ANY OPEN CUT OF ANY COUNTY ROAD OR BORING/JACKING OPERATION IN COUNTY ROADS FOR LAYING WATER/SEWER MAINS OR HOUSE CONNECTIONS. THE APPROVAL OF THESE DRAWINGS WILL CONSTITUTE COMPLIANCE WITH DPW REQUIREMENTS PER SECTION 18.114 (A) OF THE HOWARD COUNTY CODE.
  - ALL SEWER MAINS SHALL BE DIP OR P.V.C. UNLESS OTHERWISE NOTED.
  - ALL MANHOLES SHALL BE 4'-0" INSIDE DIAMETER UNLESS OTHERWISE NOTED.
  - MANHOLES SHOWN WITH 12" AND 16" WALLS ARE FOR BRICK MANHOLES ONLY.
  - MANHOLES DESIGNATED W.T. IN PLAN AND PROFILE SHALL HAVE WATERTIGHT FRAME AND COVERS, STANDARD DETAIL G5.52. WHERE WATERTIGHT FRAME AND COVER IS USED, SET TOP OF FRAME 6" ABOVE FINISHED GRADE UNLESS OTHERWISE NOTED ON THE DRAWINGS.
  - HOUSE(S) WITH THE SYMBOL "C.N.S." INDICATES THAT CELLAR CANNOT BE SERVED.

DEPARTMENT OF PUBLIC WORKS  
HOWARD COUNTY, MARYLAND

*James J. Allen* 6/1/95  
DIRECTOR OF PUBLIC WORKS DATE

*Robert J. ...* 5/31/95  
CHIEF, BUREAU OF ENGINEERING DATE

*Michael A. ...* 5-19-95  
CHIEF, BUREAU OF UTILITIES DATE

*...* 5/25/95  
CHIEF, LAND DEVELOPMENT DIVISION DATE

**FREDERICK WARD ASSOCIATES, INC.**  
ENGINEERS ARCHITECTS SURVEYORS

5 SOUTH MAIN STREET  
BEL AIR, MARYLAND  
(410) 878-2090



DES: BTB	FNA	ADD 2" WMC FOR PARCEL B	10/24/90
DRN: KS	KCI	REVISE 8" SAN INVERTS @ MH 41 & 42	3/10/92
CHK: CAW			
DATE: 5/95			
BY: NO.			

"AS-BUILT SET"  
**PLAN AND PROFILE OF SEWER MAIN**

REVISION DATE

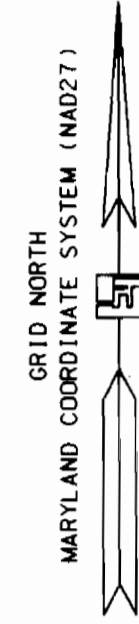
600' SCALE MAP NO. 47 BLOCK NO. 21

BAIG PROPERTY PARCELS A & B  
**ALL SAINTS ROAD SEWER EXTENSION**  
CONTRACT NO. 24-3433-D

ELECTION DISTRICT NO. 6 HOWARD COUNTY, MARYLAND

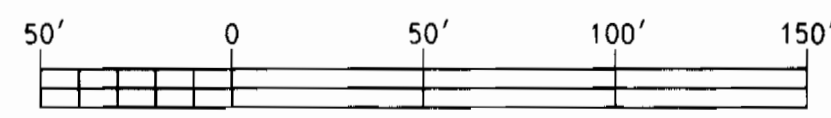
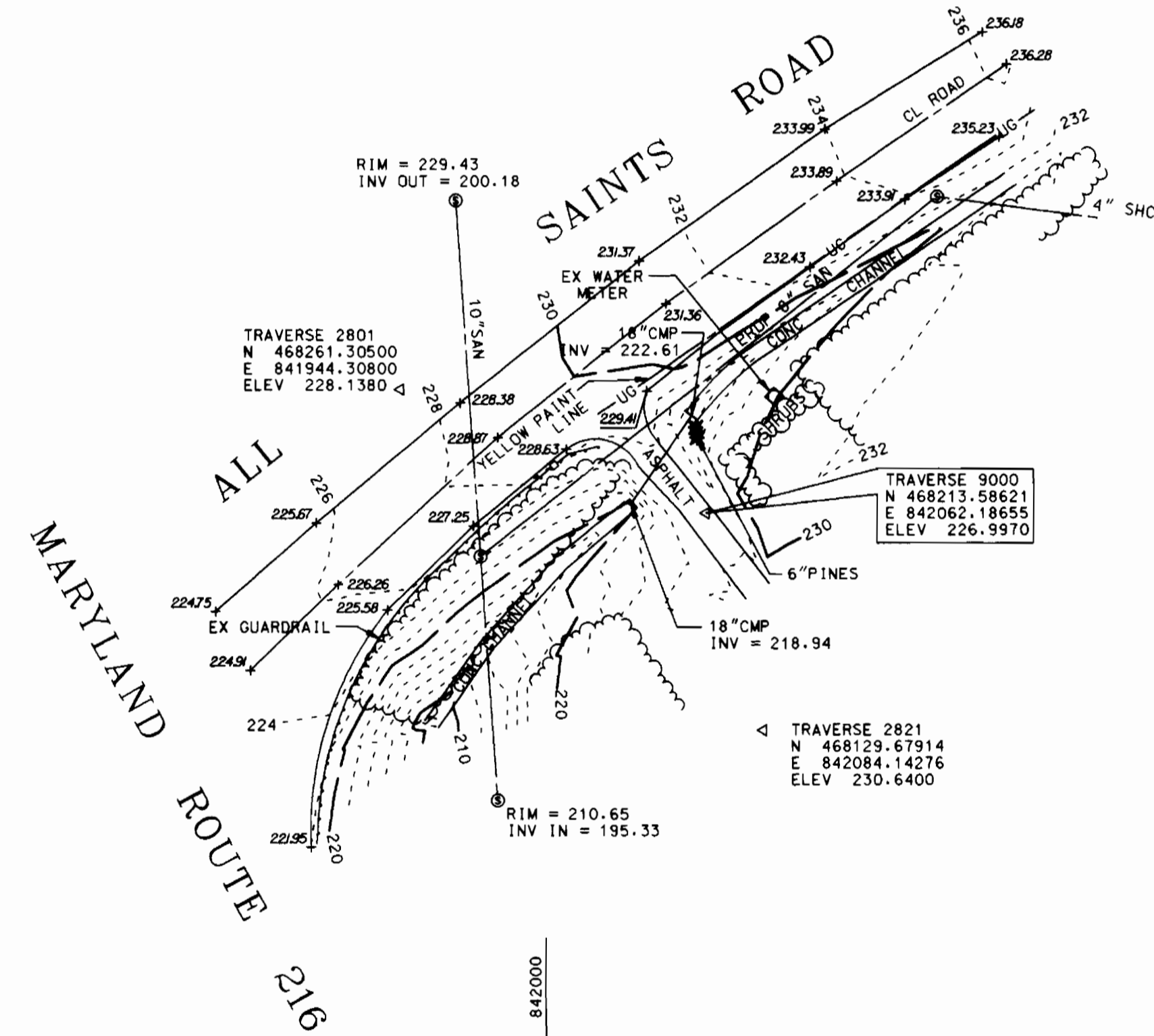
SCALE AS SHOWN  
SHEET 1 OF 1

3433 Pos. sht. #1



N 468500  
E 842000

N 468500  
E 842500



BAIG PROPERTY  
SCALE: 1" = 50'

"I, VINCENT X. NOHE, CERTIFY THAT THIS TOPOGRAPHIC SURVEY WORKSHEET IS THE ACTUAL RECORD OF THE ELECTRONIC DATA COLLECTION TOPOGRAPHIC SURVEY PERFORMED BY ME OR BY PERSONNEL UNDER MY DIRECT SUPERVISION. THIS WORKSHEET IS THE ORIGINAL AND FINAL GRAPHIC REPRESENTATION OF THE FIELD SURVEY PERFORMED ON OR ABOUT FEBRUARY 21, 1995. THE INSTRUMENTS USED IN THIS SURVEY WERE THE SOKKIA SET 3, WITH A READOUT TO 1 SECOND, AND THE LEITZ COMPANY SDR2 DATA COLLECTOR. THIS TOPOGRAPHIC SURVEY WORKSHEET MEETS THE REQUISITE ACCURACY AS SPECIFIED FOR THIS PROJECT BY HOWARD COUNTY, DEPARTMENT OF PUBLIC WORKS.

*Vincent X. Nohe*  
VINCENT X. NOHE, RPLS #308 DATE



Contract 24-3433-D.

