

AS-BUILT 2-13-96

34331 ws/1 Lilac Park Condominium

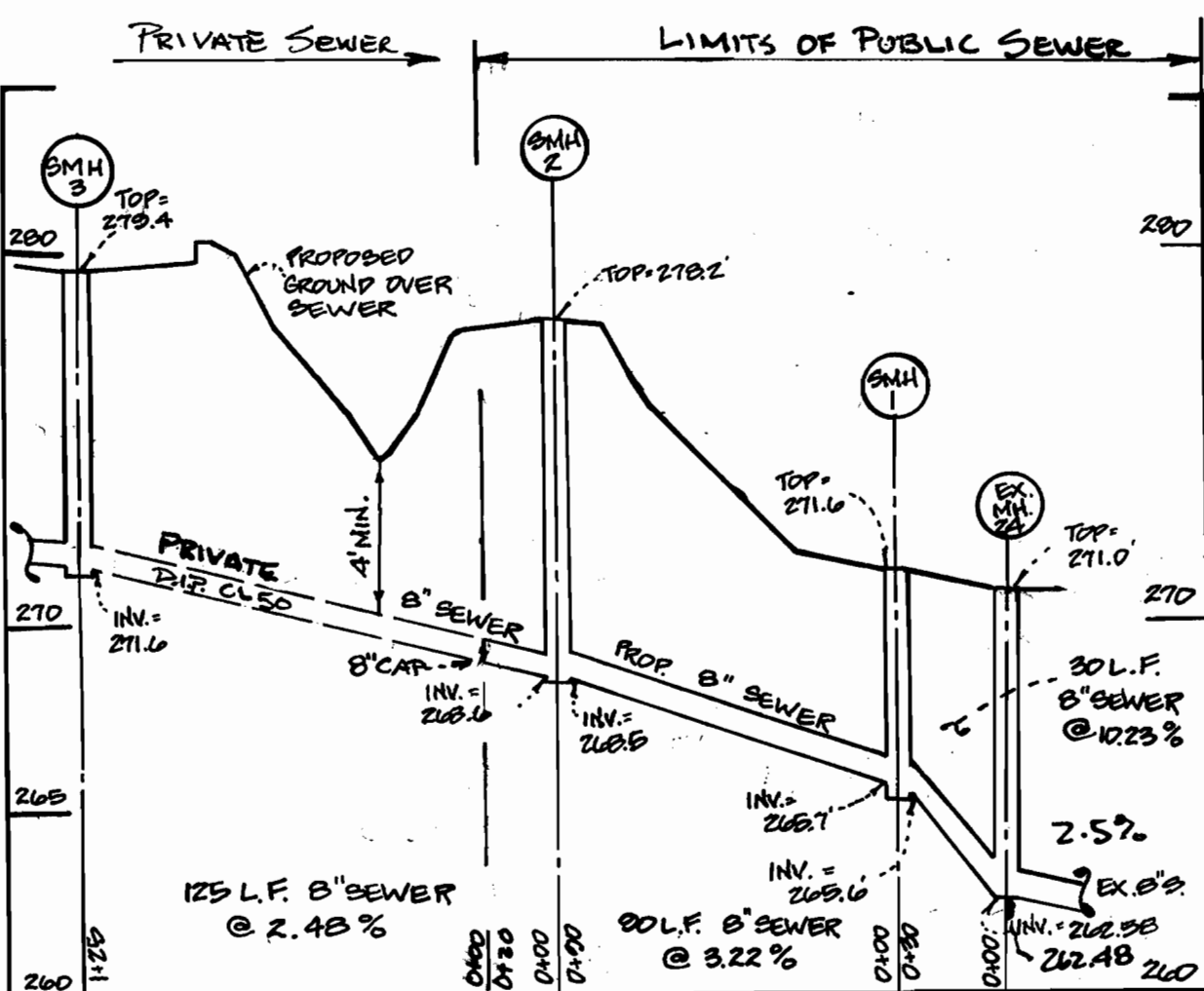
SEDIMENT CONTROL NOTES

- 1. FOR SEDIMENT CONTROL FOR THIS CONTRACT, SEE THE APPROVED ROAD CONSTRUCTION PLANS
2. MATERIALS FROM TRENCH EXCAVATION TO BE PLACED ON UPHILL SIDE OF TRENCH.
3. CONTRACTOR TO BACKFILL, COMPACT AND STABILIZE IMMEDIATELY AFTER INSTALLATION OF PIPE. NO TRENCHES WILL BE LEFT OPEN AT THE END OF EACH DAY, EXCEPT THAT PORTION WHERE WORK HAS STOPPED.
4. ANY SEDIMENT CONTROL FACILITIES ENCOUNTERED DURING PIPE CONSTRUCTION TO BE RETURNED TO ORIGINAL CONDITION IMMEDIATELY UPON COMPLETION OF THAT PORTION OF WORK.
5. SEDIMENT CONTROL MEASURES FOR THIS CONTRACT WILL BE IMPLEMENTED IN ACCORDANCE WITH SECTION 219 OF THE HOWARD COUNTY STANDARD SPECIFICATION AND AS PER ROAD CONSTRUCTION PLANS.

QUANTITIES

Table with 4 columns: ITEM, EST'D, AS-BUILT, MATERIAL / SUPPLIER. Lists items like 6" WATER MAIN, 8" WATER MAIN, FIRE HYDRANT, etc.

Contractor: COSENTINO CONTRACTING CO.



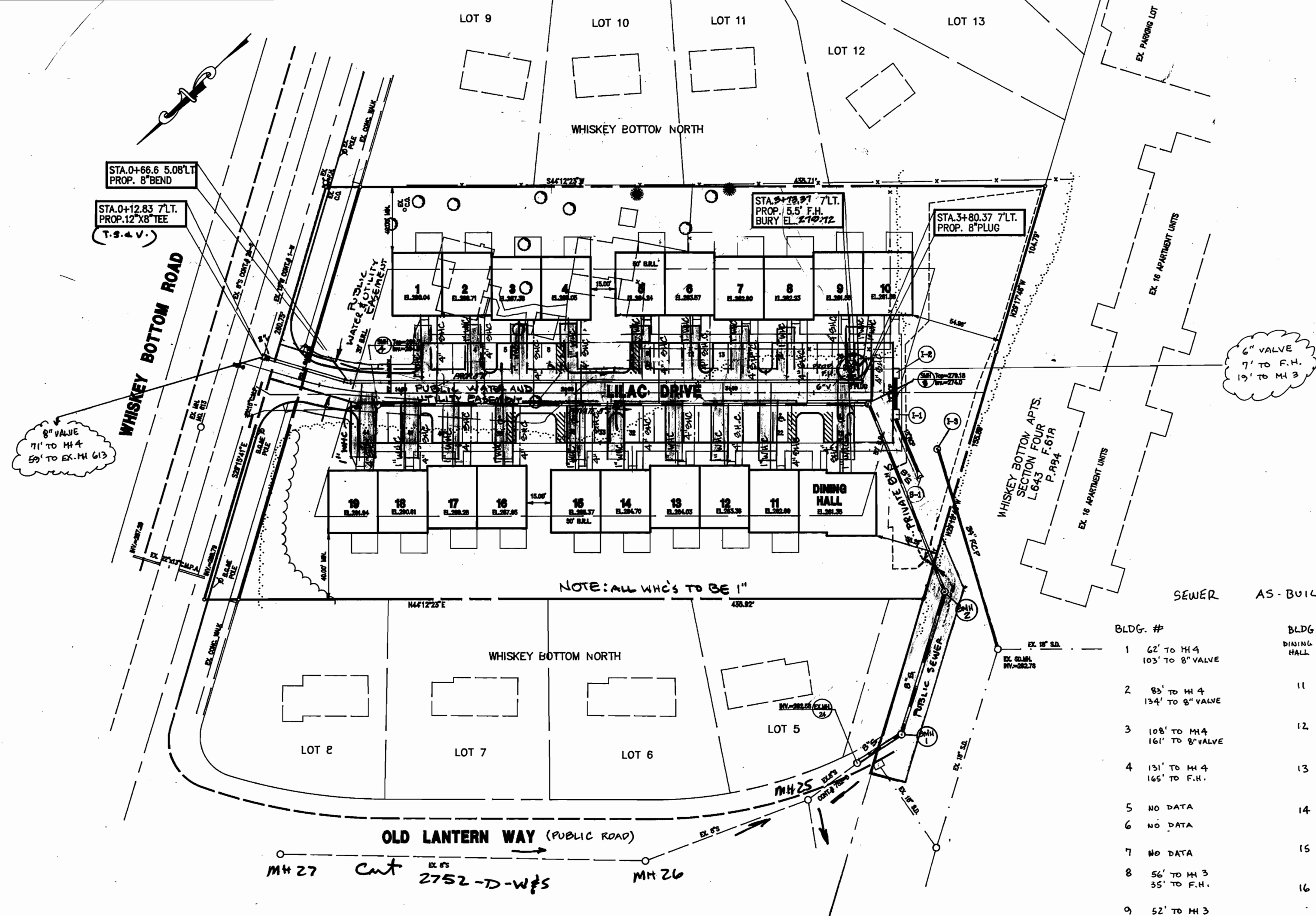
SEWER PROFILE SCALE: HOR. 1" = 50' VERT. 1" = 5'-0"

REVIEWED FOR HOWARD COUNTY SOIL CONSERVATION DISTRICT AND MEETS TECHNICAL REQUIREMENTS.

Signature: Patricia Englund, U.S. SOIL CONSERVATION SERVICE, dated 6/6/95.

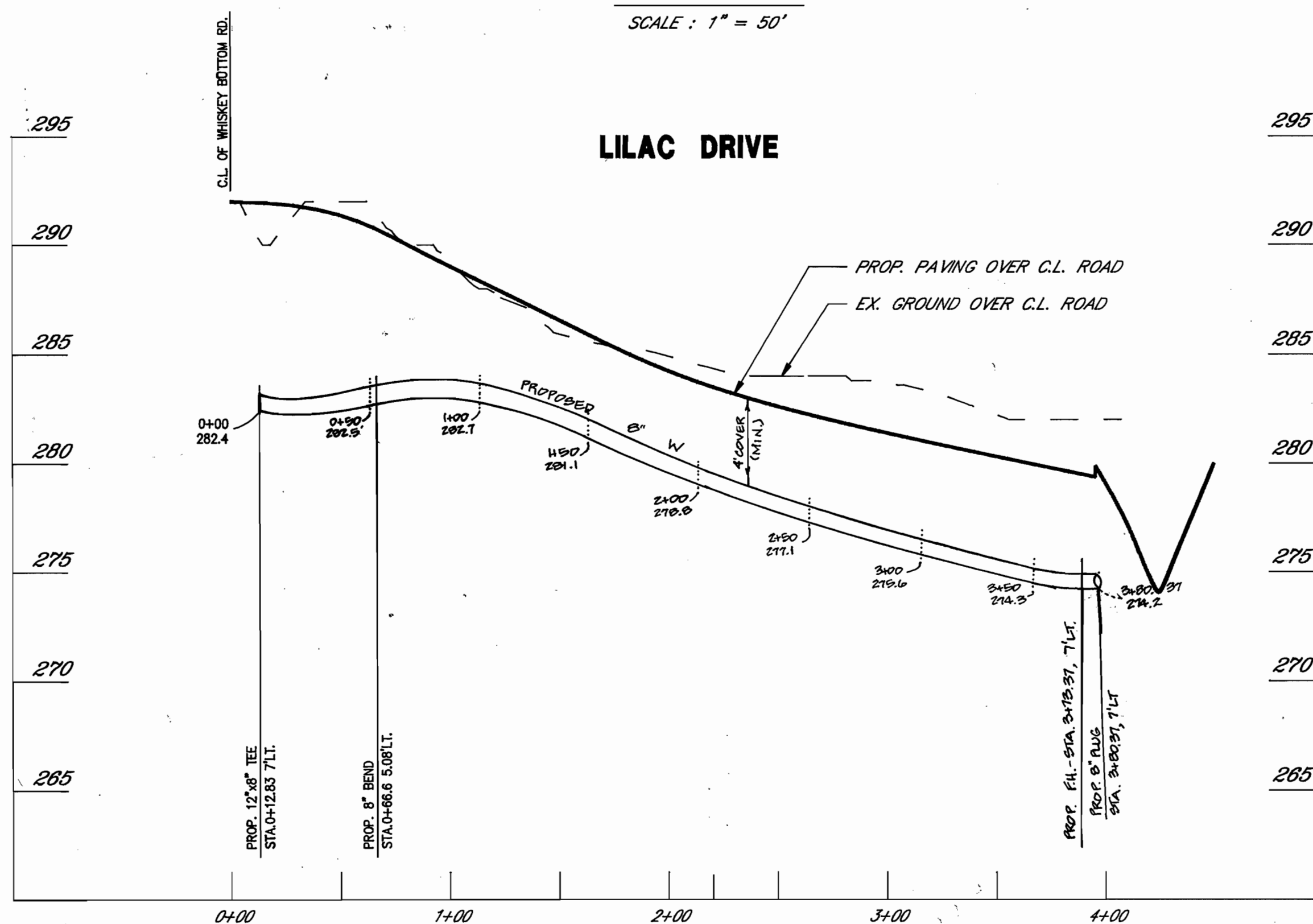
THIS DEVELOPMENT PLAN IS APPROVED FOR EROSION AND SEDIMENT CONTROL BY HOWARD COUNTY SOIL CONSERVATION DISTRICT. (SDP-94-128)

APPROVED: Signature: John R. P... dated 6/6/95, HOWARD COUNTY SOIL CONSERVATION DISTRICT.



PLAN

SCALE: 1" = 50'



WATER PROFILE

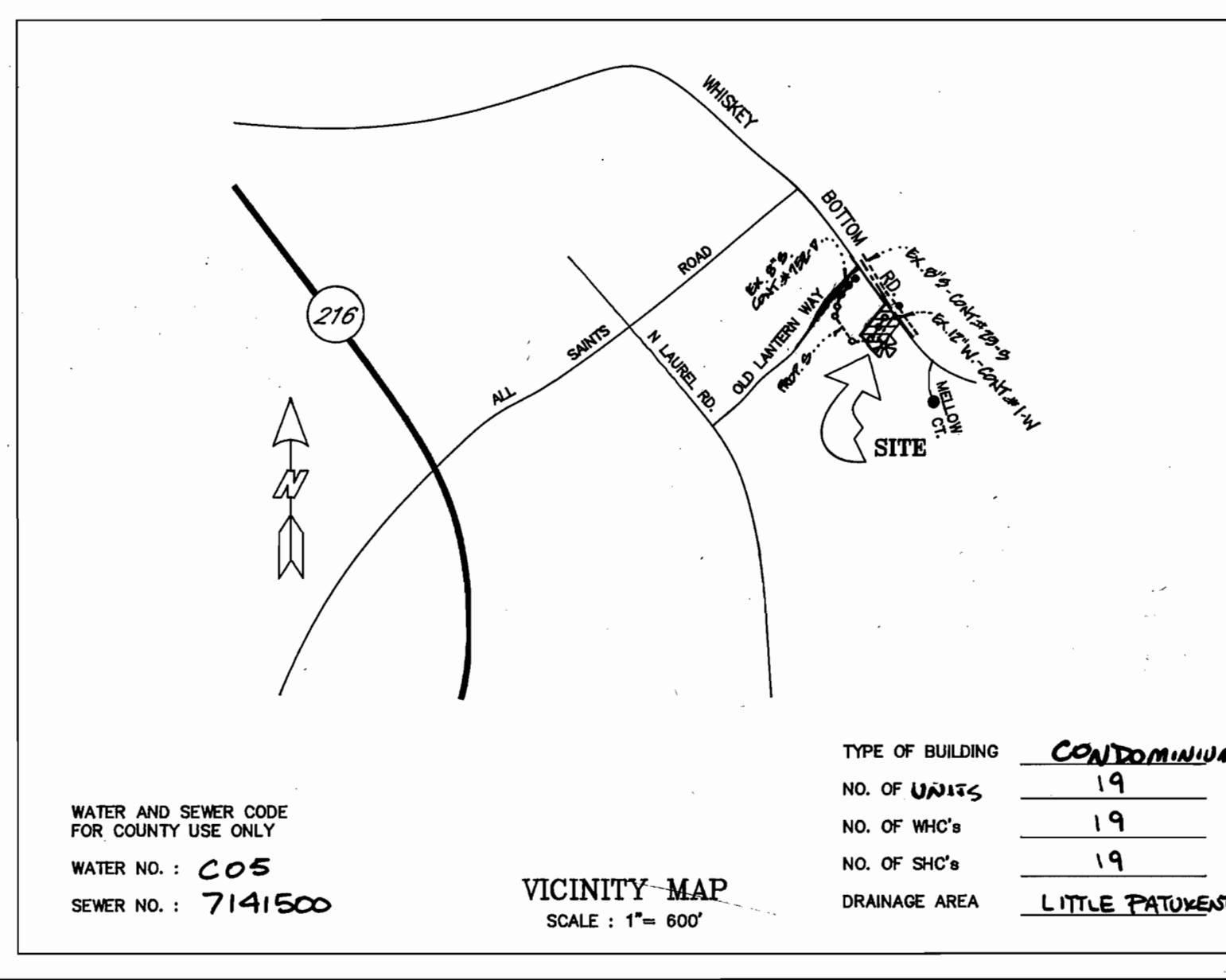
SCALE: HOR. 1" = 50' VERT. 1" = 5'

Table listing building numbers and elevations for water and sewer connections, including columns for BLDG. #, WATER AS-BUILTS, and SEWER AS-BUILTS.

0-10-99 REVISION - REVISED PUBLIC WATER & UTILITY EASEMENT.

Signature: Ghanaberger & Lane, PROFESSIONAL LAND SURVEYOR #10049.

Signature: Ghanaberger & Lane, dated 6/10/99.



WATER AND SEWER CODE FOR COUNTY USE ONLY WATER NO.: C05 SEWER NO.: 7141500

VICINITY MAP SCALE: 1" = 600'

Table with 2 columns: TYPE OF BUILDING, NO. OF UNITS, NO. OF WHC's, NO. OF SHC's, DRAINAGE AREA.

GENERAL NOTES

- 1. APPROXIMATE LOCATION OF EXISTING MAINS ARE SHOWN. THE CONTRACTOR SHALL TAKE ALL NECESSARY PRECAUTIONS TO PROTECT EXISTING MAINS AND SERVICES AND MAINTAIN UNINTERRUPTED SUPPLY. ANY DAMAGE INCURRED SHALL BE REPAIRED IMMEDIATELY TO THE SATISFACTION OF THE ENGINEER AT THE CONTRACTOR'S EXPENSE.
2. ALL HORIZONTAL CONTROLS ARE BASED ON MARYLAND STATE COORDINATES.
3. ALL VERTICAL CONTROLS ARE BASED ON U.S.G.S. DATUM
4. ALL PIPE ELEVATIONS SHOWN ARE INVERT ELEVATIONS.
5. CLEAR ALL UTILITIES BY A MINIMUM OF 6".
6. FOR DETAILS NOT SHOWN ON THE DRAWINGS, AND FOR MATERIALS AND CONSTRUCTION METHODS, USE HOWARD COUNTY DESIGN MANUAL, VOLUME FOUR, STANDARD SPECIFICATIONS AND DETAILS FOR CONSTRUCTION. THE CONTRACTOR SHALL HAVE A COPY OF VOLUME FOUR ON THE JOB.
7. WHERE TEST PITS HAVE BEEN MADE ON EXISTING UTILITIES, THEY ARE NOTED BY THE SYMBOL AT THE LOCATION OF THE TEST PIT. A NOTE OR NOTES CONTAINING THE RESULTS OF THE TEST PIT OR PITS IS INCLUDED ON THE DRAWINGS. EXISTING UTILITIES IN THE VICINITY OF THE PROPOSED WORK FOR WHICH TEST PITS HAVE BEEN DUG SHALL BE VERIFIED BY THE CONTRACTOR TO HIS OWN SATISFACTION. ANY DAMAGE TO EXISTING FACILITIES DUE TO THE CONTRACTOR'S NEGLIGENCE SHALL BE REPAIRED AT THE CONTRACTOR'S EXPENSE.
8. CONTRACTOR SHALL NOTIFY THE FOLLOWING UTILITIES OR AGENCIES AT LEAST FIVE WORKING DAYS BEFORE STARTING WORK SHOWN ON THIS PLANS:
STATE HIGHWAY ADMINISTRATION: 531-5533
BALTIMORE GAS & ELECTRIC CO.: CONTRACTOR SERVICES: 850-4620 UNDERGROUND DAMAGE CONTROL: 859-9004 TROUBLE SHOOTING: 298-9001
MISS UTILITY: 1-559-0100
COLONIAL PIPELINE COMPANY: 795-1390
C&P TELEPHONE COMPANY: 1-800-257-7777
BUREAU OF UTILITIES, HOWARD COUNTY DEPARTMENT OF PUBLIC WORKS: 313-4100 982-2366
9. TREES AND SHRUBS ARE TO BE PROTECTED FROM DAMAGE TO MAXIMUM EXTENT. TREES AND SHRUBS LOCATED WITHIN THE CONSTRUCTION STRIP ARE NOT TO BE REMOVED OR DAMAGE BY THE CONTRACTOR.
10. CONTRACTOR SHALL REMOVE TREES, STUMPS AND ROOTS ALONG LINE OF EXCAVATION. PAYMENT FOR SUCH REMOVAL SHALL BE INCLUDED IN THE UNIT PRICE BID FOR CONSTRUCTION OF THE MAIN.
11. ALL WATER MAINS TO BE D.I.P. CLASS 52 UNLESS OTHERWISE NOTED.
12. TOPS OF ALL WATER MAINS TO HAVE A MINIMUM OF 3-1/2" COVER UNLESS OTHERWISE NOTED.
13. VALVES ADJACENT TO TEES SHALL BE STRAPPED TO TEES.
14. ALL FITTINGS SHALL BE BUTTRESSED OR ANCHORED WITH CONCRETE IN ACCORDANCE WITH THE STANDARD DETAILS UNLESS OTHERWISE PROVIDED FOR ON THE DRAWINGS.
15. FIRE HYDRANTS SHALL BE SET TO THE BURY LINE ELEVATIONS SHOWN ON THE DRAWINGS. ALL FIRE HYDRANTS SHALL BE STRAPPED AND BUTTRESSED WITH CONCRETE IN ACCORDANCE WITH THE STANDARD DETAILS. SOIL AROUND THE FIRE HYDRANT SHALL BE COMPACTED IN ACCORDANCE WITH SECTION 100D AND 100S OF THE STANDARD SPECIFICATIONS.
16. THE CONTRACTOR SHALL NOT OPERATE ANY WATER MAIN VALVES ON THE EXISTING WATER SYSTEM.
17. ALL WATER HOUSE CONNECTIONS SHALL BE FOR INSIDE METER SETTING, UNLESS OTHERWISE NOTED ON THE PLANS OR IN THE SPECIFICATIONS (STD. DETAIL W 3.21)
18. WATER MAINS OR WATER HOUSE CONNECTION LINES MUST BE PLACED SO AS TO HAVE AT LEAST ONE (1) FOOT SEPARATION FROM THE SEWER MAIN OR SEWER HOUSE CONNECTION AS THEY PASS ABOUT IT.
19. MANHOLES DESIGNATED W.T. IN PLAN AND PROFILE SHALL HAVE WATER TIGHT FRAME AND COVERS STANDARD DETAIL G 5.52 WHERE WATER TIGHT MANHOLE FRAME AND COVER IS USED, SET TOP OF FRAME 1'-6" ABOVE FINISHED GRADE UNLESS OTHERWISE NOTED ON THE DRAWINGS.
20. ALL SEWER MAINS SHALL BE PVC.
21. THE CONTRACTOR SHALL PROVIDE A JOINT IN ALL SEWER MAINS WITHIN 2'-0" OF EXTERIOR MANHOLE WALL.
22. ALL MANHOLES SHALL BE 4'-0" INSIDE DIAMETER UNLESS OTHERWISE NOTED.
23. MANHOLES SHOWN WITH 12" AND 18" WALLS ARE FOR BRICK MANHOLES ONLY.
24. MANHOLES LOCATED WITHIN PROPOSED ROADWAY SHALL HAVE STANDARD HEAVY TRAFFIC MANHOLE FRAME AND COVER, STANDARD DETAIL G 5.51
25. ALL D.I.P. FITTINGS SHALL BE IN ACCORDANCE WITH AWWA SPECIFICATION C-153 : DUCTILE IRON COMPACT FITTINGS, 3" THROUGH 12" FOR WATER & OTHER LIQUIDS.

DEPARTMENT OF PUBLIC WORKS HOWARD COUNTY, MARYLAND

Signatures and dates for Director of Public Works, Chief, Bureau of Engineering, and Chief, Land Development Division.

PREPARED BY: AMERICAN ENGINEERING, INC. CIVIL ENGINEERING CONSULTANTS AND LAND PLANNER

809 B MAIN STREET LAUREL, MD. 20707 BALTO.(301) 890-3039 WASH.(301) 953-1221



Table with columns: DES, DRN, CHK, DATE, BY, NO., REVISION, DATE. Includes revision 0/10/99.

PLAN & PROFILE

600'SCALE MAP NO. 47 BLOCK NO. 22

LILAC PARK CONDOMINIUM SECTION 1 / AREA 1 UNITS 1-19 CONTRACT NO.24-3431-D ELECTION DISTRICT NO. 6 HOWARD COUNTY, MARYLAND.

SCALE AS SHOWN SHEET 1 OF 1