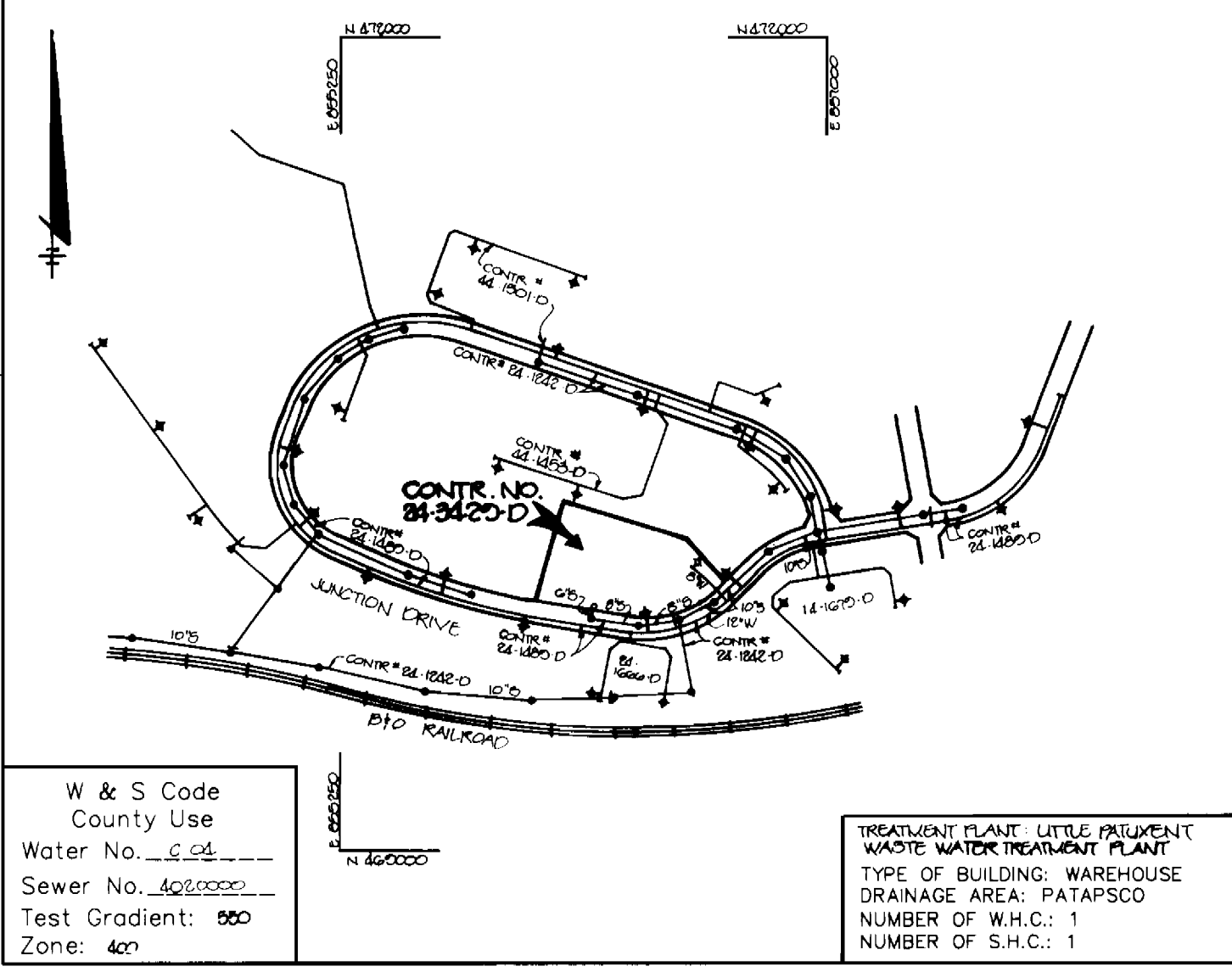
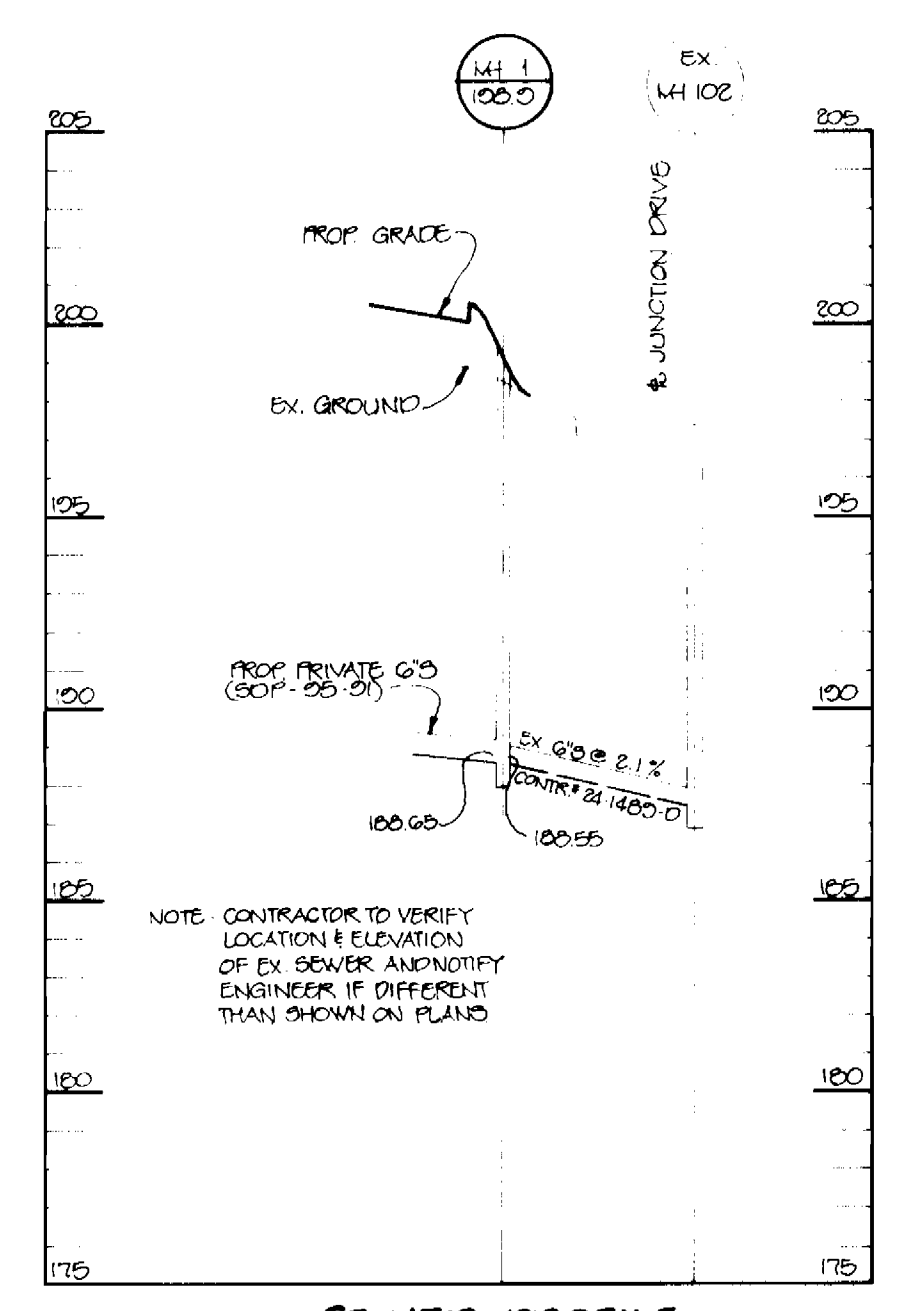
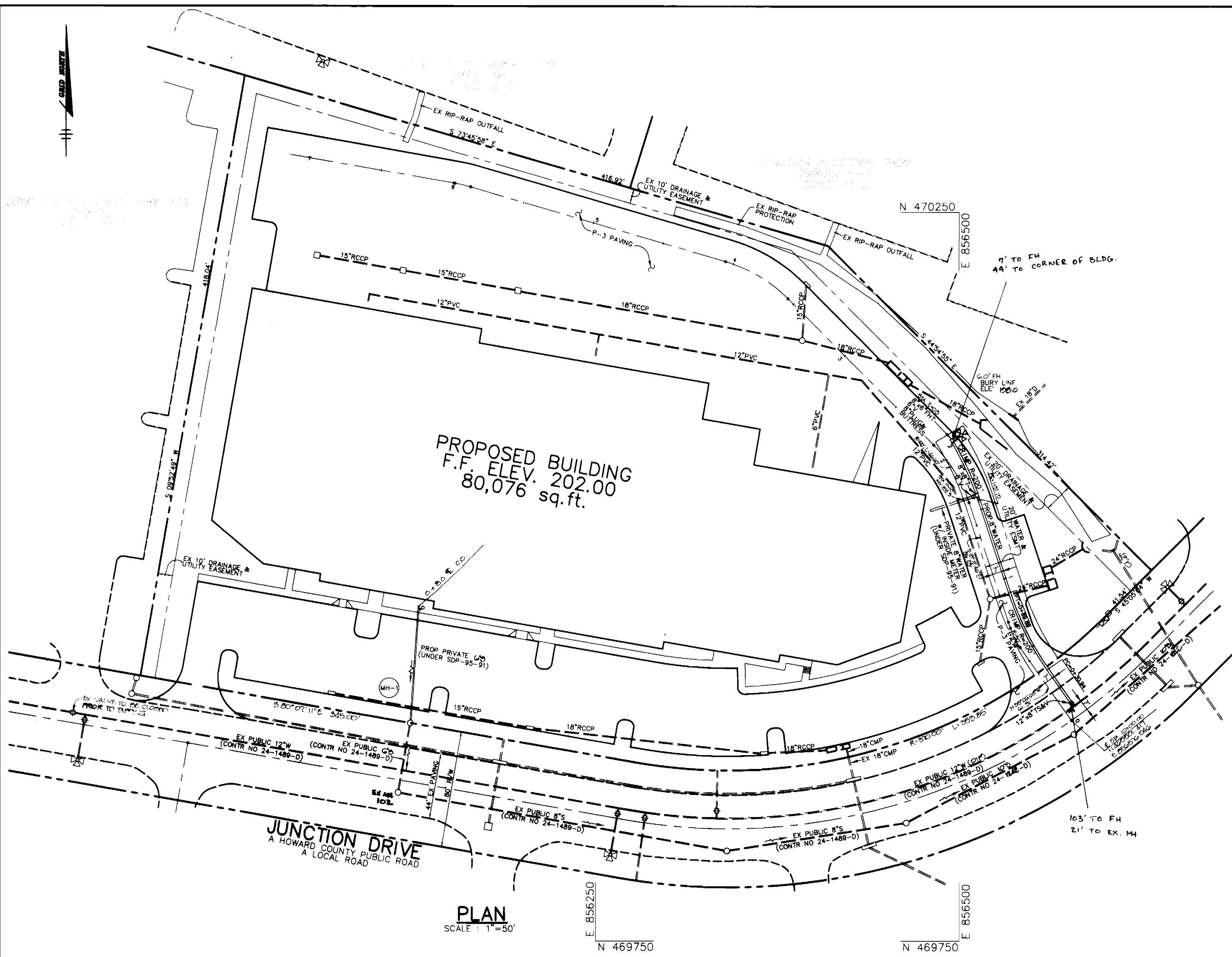
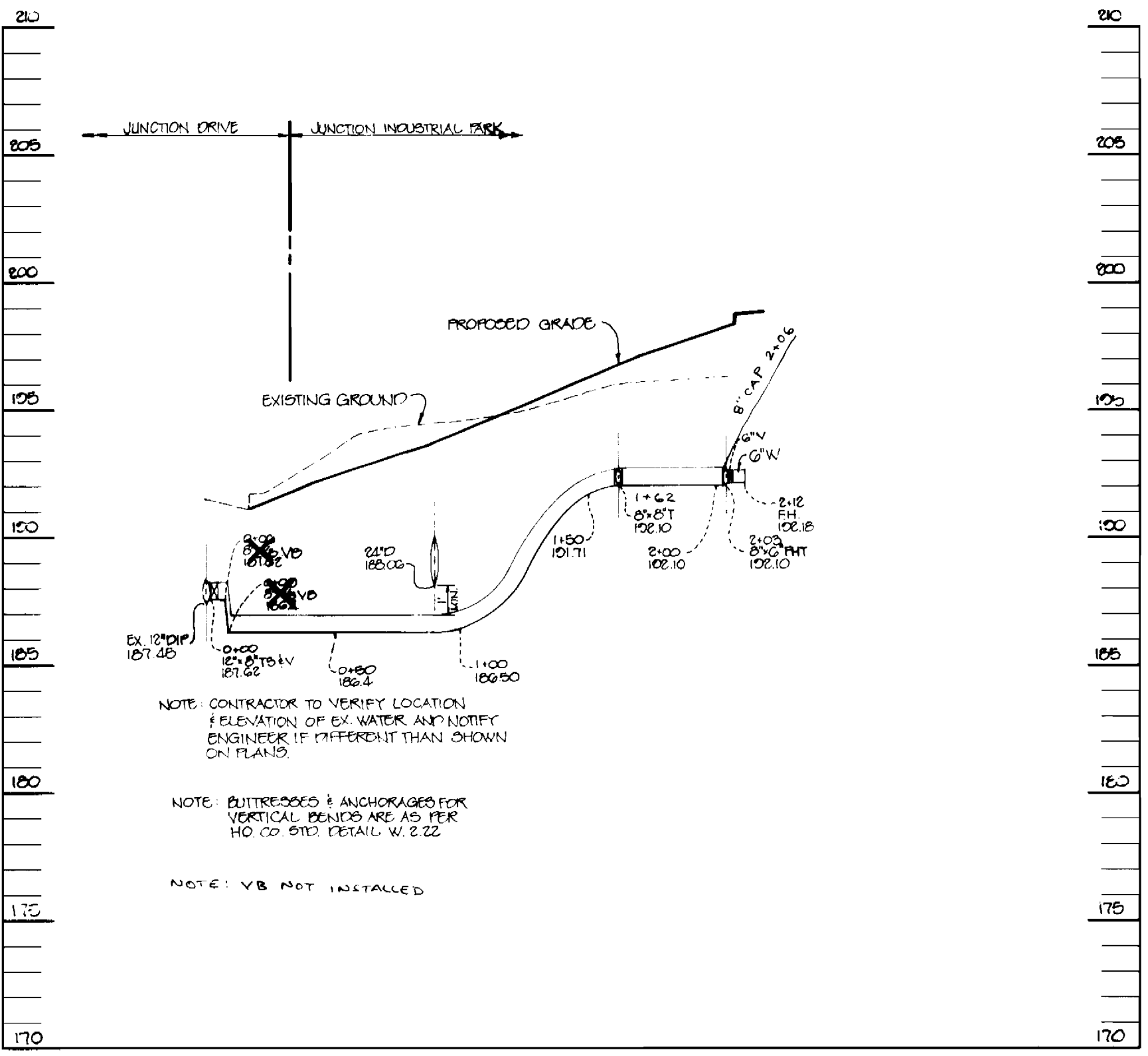


3429 ws/1 Junction Industrial Park

AS-BUILT 11-15-95



NOTE: EX. VALVES AT JUNCTION DRIVE INTERSECTION TO BE CLOSED PRIOR TO TAPPING



BENCH MARKS

BM #1
 HOCO SURVEY CONTROL STATION: 480B
 NAD27 COORDS. - N 475,827, E 858,587
 DESCRIPTION: STATION IS A 3/4" REBAR

BM #2
 HOCO SURVEY CONTROL STATION: 480C
 NAD27 COORDS. - N 472,793, E 856,438
 DESCRIPTION: STD DISC ON CONC MONUMENT

QUANTITIES

ITEMS	QUANTITIES ESTIMATED	AS-BUILT		
		QUANTITIES	TYPE	MANUFACTURER / SUPPLIER
8" WATER	213 LF	216 LF	DIP	GRIFFIN PIPE
6" WATER	10 LF	9 LF	DIP	GRIFFIN PIPE
FIRE HYDRANTS	1 EA.	1 EA.	CAST IRON	MUELLER CO.
12"x8" T.S.&V.	1 EA.	1 EA.	CAST IRON	MUELLER CO.
8" VALVES	2 EA.	2 EA.	CAST IRON	MUELLER CO.
6" VALVES	1 EA.	1 EA.	CAST IRON	MUELLER CO.
SEWER MANHOLES	1 EA.	1 EA.	PRECAST CONC.	ATLANTIC CONC.

Sediment control measures for this contract will be implemented in accordance with Section 219 of the Specifications and as shown on SDP-95-91

Review for Howard Soil Conservation District and meets technical requirements.

Patricia Engler 5/5/95
 NATURAL RESOURCE CONSERVATION SERVICE DATE

This plan is approved for soil erosion and sediment control by the Howard Soil Conservation District.

John R. Robertson 5/5/95
 HOWARD SOIL CONSERVATION DISTRICT DATE

NAME OF UTILITY CONTRACTOR: _____

CHECKBOX

AS-BUILT DATE: 11-15-95

SURVEY AND DRAFTING DIVISION

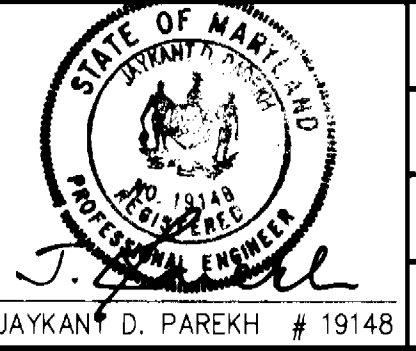
DEPARTMENT OF PUBLIC WORKS
 HOWARD COUNTY, MARYLAND

James J. Schum 5/5/95
 DIRECTOR OF PUBLIC WORKS DATE

Richard A. Horgan 5/5/95
 CHIEF, BUREAU OF UTILITIES DATE

William J. ... 5/5/95
 CHIEF, LAND DEVELOPMENT DATE

RIEMER MUEGGE & ASSOCIATES, INC.
 Planners • Engineers • Surveyors
 8818 Centre Park Drive • Suite 200 • Columbia, MD 21045
 410-997-8900 FAX: 410-997-9282
 HOCO/95S10500 WSI.DWG



DES: C.J.R.			
DRN: DAM			
CHK: JDP			
DATE: 4/21/95	BY NO.	REVISION	DATE

PLAN AND PROFILE OF A WATER AND A SEWER MAIN

600' SCALE MAP NO. 48 BLOCK NO. 10

JUNCTION INDUSTRIAL PARK
 SECTION 2, AREA 1 - PARCEL 1
 6th ELECTION DISTRICT
 HOWARD COUNTY, MARYLAND
 CONTRACT NO. 24-3429-D

SCALE AS SHOWN
 SHEET 1 OF 1