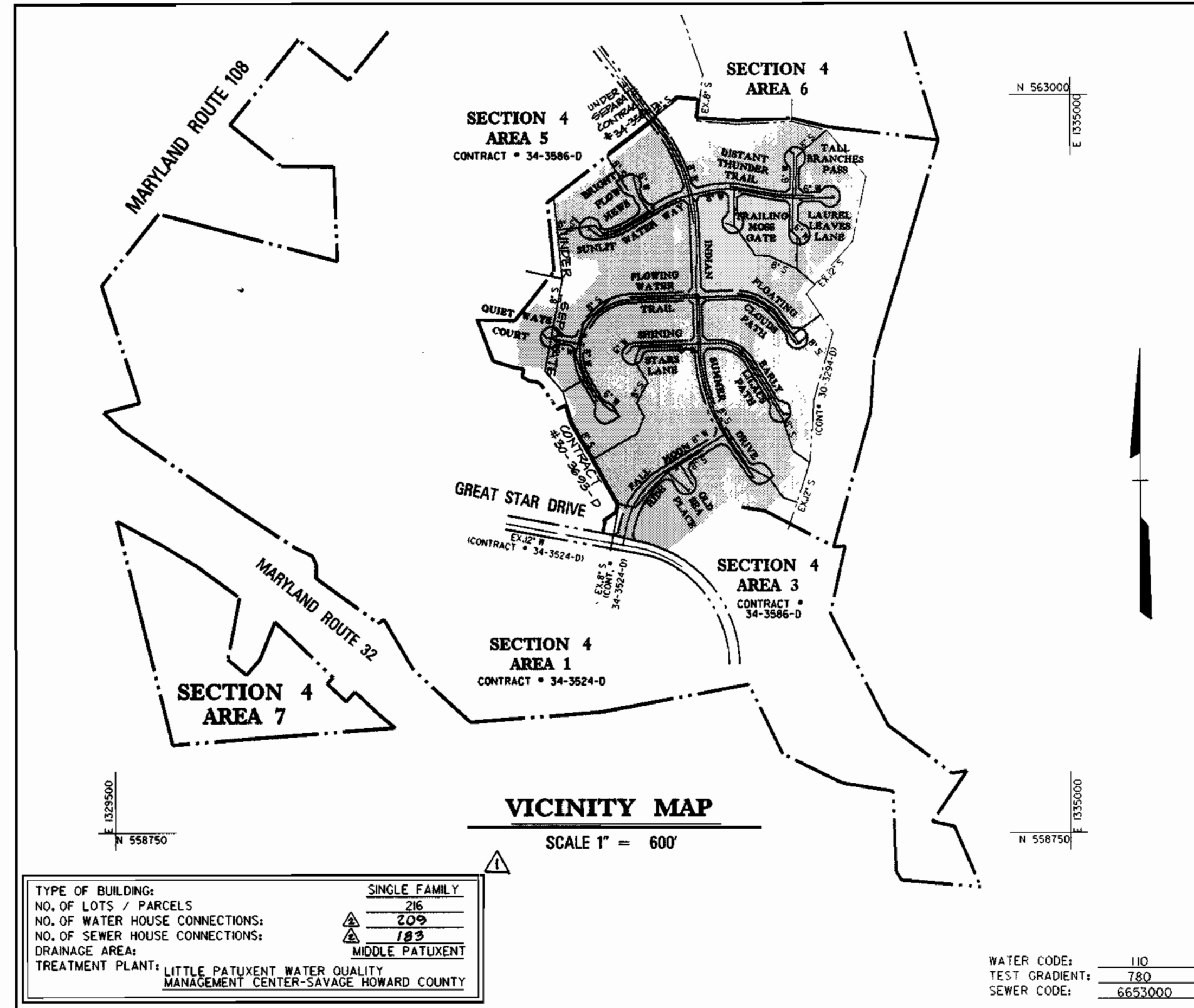


# VILLAGE OF RIVER HILL WATER AND SEWER

SECTION 4, AREA 4, LOTS 1-216

HOWARD COUNTY, MARYLAND DEPARTMENT OF PUBLIC WORKS



TYPE OF BUILDING: SINGLE FAMILY  
 NO. OF LOTS / PARCELS: 205  
 NO. OF WATER HOUSE CONNECTIONS: 183  
 NO. OF SEWER HOUSE CONNECTIONS: 183  
 DRAINAGE AREA: MIDDLE PATUXENT  
 TREATMENT PLANT: LITTLE PATUXENT WATER QUALITY MANAGEMENT CENTER-SAVAGE HOWARD COUNTY

WATER CODE: 110  
 TEST GRADIENT: 780  
 SEWER CODE: 6653000

### GENERAL NOTES

- PART I -**
- APPROXIMATE LOCATION OF EXISTING MAINS ARE SHOWN. THE CONTRACTOR SHALL TAKE ALL NECESSARY PRECAUTIONS TO PROTECT EXISTING MAINS AND SERVICES AND MAINTAIN UNINTERRUPTED SUPPLY. ANY DAMAGE INCURRED SHALL BE REPAIRED IMMEDIATELY TO THE SATISFACTION OF THE ENGINEER AT THE CONTRACTOR'S EXPENSE.
  - ALL HORIZONTAL CONTROLS ARE BASED ON MARYLAND STATE COORDINATES (NORTH AMERICAN DATUM OF 1983/NA83).
  - ALL VERTICAL CONTROLS ARE BASED ON U.S.C.S. DATA.
  - ALL PIPE ELEVATIONS SHOWN ARE INVERT ELEVATIONS.
  - CLEAR ALL UTILITIES BY A MINIMUM OF 6". CLEAR ALL POLES BY 2' - 0" MINIMUM OR TUNNEL AS REQUIRED. THE OWNER HAS CONTACTED THE UTILITY COMPANIES AND HAS MADE ARRANGEMENTS FOR BRACING OF POLES AS SHOWN ON THE DRAWINGS. IN THE EVENT THE CONTRACTOR'S WORK REQUIRES THE BRACING OF ADDITIONAL POLES, ANY COST INCURRED BY THE OWNER FOR BRACING OF ADDITIONAL POLES OR DAMAGES SHALL BE DEDUCTED FROM MONEY OWED THE CONTRACTOR. THE CONTRACTOR SHALL COORDINATE WITH THE UTILITY COMPANIES TO SCHEDULE THE BRACING OF THE POLES.
  - FOR DETAILS NOT SHOWN ON THE DRAWINGS AND FOR MATERIALS AND CONSTRUCTION METHODS USE HOWARD COUNTY DESIGN MANUAL, VOLUME IV, STANDARD SPECIFICATIONS AND DETAIL FOR CONSTRUCTION (LATEST EDITION). THE CONTRACTOR SHALL HAVE A COPY OF VOLUME IV ON THE JOB.
  - WHERE TEST PITS HAVE BEEN MADE ON EXISTING UTILITIES, THEY ARE NOTED BY THE SYMBOL AT THE LOCATION OF THE TEST PIT. A NOTE OR NOTES CONTAINING THE RESULTS OF THE TEST PIT OR PITS IS INCLUDED ON THE DRAWINGS. EXISTING UTILITIES IN THE VICINITY OF THE PROPOSED WORK FOR WHICH TEST PITS HAVE NOT BEEN DUG SHALL BE LOCATED BY THE CONTRACTOR TWO WEEKS IN ADVANCE OF CONSTRUCTION OPERATIONS AT HIS OWN EXPENSE.
  - CONTRACTOR SHALL NOTIFY THE FOLLOWING UTILITY COMPANIES OR AGENCIES AT LEAST FIVE WORKING DAYS BEFORE STARTING WORK SHOWN ON THESE PLANS:
    - STATE HIGHWAY ADMINISTRATION: 1-410-531-5533
    - B&E CO. CONTRACTOR SERVICES: 1-410-850-4620
    - B&E CO. UNDER GROUND DAMAGE CONTROL: 1-410-787-9068
    - MISS UTILITY: 1-800-257-7777
    - COLONIAL PIPELINE CO.: 1-410-795-1390
    - HOWARD COUNTY DEPARTMENT OF PUBLIC WORKS BUREAU OF UTILITIES: 1-410-313-4900
  - TREES AND SHRUBS ARE TO BE PROTECTED FROM DAMAGE TO MAXIMUM EXTENT. TREES AND SHRUBS LOCATED WITHIN THE CONSTRUCTION STRIP ARE NOT TO BE REMOVED OR DAMAGED BY THE CONTRACTOR.
  - CONTRACTOR SHALL REMOVE TREES, STUMPS, AND ROOTS ALONG LINE OF EXCAVATION. PAYMENT FOR SUCH REMOVAL SHALL BE INCLUDED IN THE UNIT PRICE BID FOR CONSTRUCTION OF THE MAIN.
  - THE CONTRACTOR SHALL NOTIFY THE BUREAU OF HIGHWAYS, HOWARD COUNTY, AT (410) 313-2450 AT LEAST FIVE WORKING DAYS BEFORE ANY OPEN CUT OF ANY COUNTY ROAD OR BORING/JACKING OPERATION IN COUNTY ROADS FOR LAYING WATER/SEWER MAINS OR HOUSE CONNECTIONS. THE APPROVAL OF THESE DRAWINGS WILL CONSTITUTE COMPLIANCE WITH DPW REQUIREMENTS PER SECTION 18.14(A) OF THE HOWARD COUNTY CODE.
- PART II - WATER**
- ALL WATER MAINS TO BE D.I.P. CLASS 52 UNLESS OTHERWISE NOTED.
  - TOPS OF ALL WATER MAINS TO HAVE A MINIMUM OF 3-1/2" COVER UNLESS OTHERWISE NOTED.
  - VALVES ADJACENT TO TEES SHALL BE STRAPPED TO TEES.
  - ALL FITTINGS SHALL BE BUTTRESSED OR ANCHORED WITH CONCRETE IN ACCORDANCE WITH THE STANDARD DETAILS UNLESS OTHERWISE PROVIDED FOR ON THE DRAWINGS.
  - FIRE HYDRANTS SHALL BE SET TO THE BURY LINE ELEVATIONS SHOWN ON THE DRAWINGS. ALL FIRE HYDRANTS SHALL BE RESTRAINED AND BUTTRESSED WITH CONCRETE IN ACCORDANCE WITH STANDARD DETAILS. SOIL AROUND THE FIRE HYDRANT SHALL BE COMPACTED IN ACCORDANCE WITH SECTION 1000 AND 1005 OF THE STANDARD SPECIFICATIONS.
  - THE CONTRACTOR SHALL NOT OPERATE ANY WATER MAIN VALVES ON THE EXISTING WATER SYSTEM.
  - ALL WATER HOUSE CONNECTIONS SHALL BE FOR INSIDE METER SETTING UNLESS OTHERWISE NOTED ON PLANS OR IN SPECIFICATIONS.
  - SPRINKLER SYSTEM FOR ALL TOWNHOMES OR MULTI-FAMILY DWELLING UNITS SHOULD HAVE A MINIMUM OF 1" CONNECTION WITH A 3/4" METER.
  - TWIN WATER HOUSE CONNECTION SHALL BE AS PER HOWARD COUNTY STANDARD DETAIL W3.23.
- PART III - SEWER**
- ALL SEWER MAINS SHALL BE DIP AND P.V.C. UNLESS OTHERWISE NOTED.
  - ALL MANHOLES SHALL BE 4' - 0" INSIDE DIAMETER UNLESS OTHERWISE NOTED.
  - FORCE MAINS SHALL BE D.I.P. ONLY.
  - MANHOLES SHOWN WITH 12" AND 16" WALLS ARE FOR BRICK MANHOLES ONLY.
  - MANHOLES DESIGNATED W.T. IN PLAN AND PROFILE SHALL HAVE WATERTIGHT FRAME AND COVERS, STANDARD DETAIL G5.52, WHERE WATERTIGHT MANHOLE FRAME AND COVER IS USED, SET TOP OF FRAME 1" - 6" ABOVE FINISHED GRADE UNLESS OTHERWISE NOTED ON THE DRAWINGS.
  - HOUSE(S) WITH THE SYMBOL "C.N.S." INDICATES THAT CELLAR CANNOT BE SERVED.
- PART IV - EASEMENT**
- HOWARD COUNTY DEPARTMENT OF PUBLIC WORKS IS HEREBY GRANTED PERMISSION TO ACCESS A 3 FOOT STRIP OF LAND ACROSS THE FRONTAGE OF ALL PRIVATE LOTS SHOWN ON THESE PLANS IN ORDER TO MAINTAIN PUBLIC WATER AND SEWER HOUSE CONNECTIONS AT THE CURB STOPS AND/OR

ITEM	QUANTITIES		AS-BUILT	
	ESTIMATED	QUANTITIES	TYPE	MANUFACTURER/SUPPLIER
4" P.V.C. SEWER	5973 LF	4580	SDR 35	J.M./U.S. FILTER
8" P.V.C. SEWER	6273 LF	5480	SDR 35	J.M./U.S. FILTER
8" D.I.P. SEWER	5020 LF	4654	CL 52 DIP	GRIFFIN PIPE
STD MH	54	54		ATLANTIC CONC.
TYPE "B" DROP MH	4	4		ATLANTIC CONC.
MANHOLES	376 VF			
AIR RELEASE MH	1	1		ATLANTIC CONC.
4" D.I.P. WATER	300 LF	300	CL 52 DIP	GRIFFIN PIPE
6" D.I.P. WATER	1910 LF	1,418	CL 52 DIP	" "
8" D.I.P. WATER	7260 LF	6,688.6	CL 52 DIP	" "
6" VALVE	2	3	RES	MOELLER/U.S. FILTER
8" VALVE	20	20	RES	" "
1/2" WHC	7029 LF	6,288	KTYPE	READING TUBE/U.S. FILTER
1" WHC	480 LF	230	KTYPE	" "
FIRE HYDRANTS	19	21		MOELLER/U.S. FILTER
8" x 8" CROSS	4	4	D.I.P.	" "
8" x 8" TEE	4	4	" "	" "
8" x 6" TEE	2	2	" "	" "
8" VALVE	20		" "	" "
6" VALVE (F.H.)	2	21	RES.	" "
8" CAP & BUT.	2	2	DIP	" "
4" CAP & BUT.	9	9	" "	" "
1/2" DRAIN	8	8	KTYPE	" "
8" x 6" RED.	7	7	D.I.P.	" "
8" x 4" RED.	2	2	" "	" "
1/8" BEND	4	4	D.I.P.	MOELLER/U.S. FILTER

NAME OF UTILITY CONTRACTOR: W.F. WILSON  
 SURVEY AND DRAFTING DIVISION AS-BUILT DATE: 9/21/00

### BENCHMARK

DESCRIPTION  
 HOWARD COUNTY SURVEY CONTROL STATION: 29G4  
 N 566866.5020 E 1333306.168  
 NOTE: HOWARD COUNTY SURVEY CONTROLS ARE STAMPED BRASS OR ALUMINUM DISCS SET ON TOP OF CONCRETE BASE INTERSECTION OF RT. 108 & MEADOW VISTA WAY.

### BENCHMARK

DESCRIPTION  
 HOWARD COUNTY SURVEY CONTROL STATION: 29G5  
 N 568341.8 E 1335392.4  
 NOTE: HOWARD COUNTY SURVEY CONTROLS ARE STAMPED BRASS OR ALUMINUM DISCS SET ON TOP OF CONCRETE BASE 150' NE OF INTERSECTION OF MIDDLE PATUXENT CT & RT. 108

SHEET INDEX	
NO.	DESCRIPTION
1	TITLE SHEET
2	PLAN OF WATER AND SEWER MAINS
3	PLAN OF WATER AND SEWER MAINS
4	PLAN OF WATER AND SEWER MAINS
5	PLAN OF WATER AND SEWER MAINS
6	PLAN OF WATER AND SEWER MAINS
7	PROFILES OF WATER AND SEWER MAINS
8	PROFILES OF WATER AND SEWER MAINS
9	PROFILES OF WATER AND SEWER MAINS
10	PROFILES OF WATER AND SEWER MAINS
11	PROFILES OF WATER AND SEWER MAINS
12	PROFILES OF WATER AND SEWER MAINS
13	PROFILES OF WATER AND SEWER MAINS
14	PROFILES OF WATER AND SEWER MAINS
15	PROFILES OF WATER AND SEWER MAINS
16	PROFILES OF WATER AND SEWER MAINS

REVIEWED FOR NATURAL Resources Conservation Service AND MEETS TECHNICAL REQUIREMENT  
 CHEYLS SIMMONS 4/21/97  
 THIS DEVELOPMENT PLAN IS APPROVED FOR SOIL EROSION AND SEDIMENT CONTROL BY THE HOWARD COUNTY CONSERVATION DISTRICT  
 APPROVED: [Signature] 4/21/97  
 HOWARD S.C.D.

SEDIMENT CONTROL MEASURES WILL BE IMPLEMENTED IN ACCORDANCE WITH SECTION 219 OF THE SPECIFICATIONS AND WITH ROAD CONSTRUCTION PLANS F-96-130.

DEPARTMENT OF PUBLIC WORKS  
 HOWARD COUNTY, MARYLAND  
 DEPARTMENT OF PLANNING & ZONING  
 HOWARD COUNTY, MARYLAND  
 Robert R. [Signature] 4/14/97  
 CHIEF - BUREAU OF UTILITIES - DATE  
 [Signature] 4/22/97  
 CHIEF - DEVELOPMENT ENGINEERING DIVISION 1 DATE

**DMW**  
 Daft · McCune · Walker, Inc.  
 A Team of Land Planners, 200 East Pennsylvania Avenue, Towson, Maryland 21286  
 Landscape Architects, Engineers, Surveyors & Environmental Professionals  
 410 296 3333  
 Fax 296 4705

DESIGN BY:	DMW	QUANTITIES FOR SEPARATE SEWER CONTRACT	5/29/96
DRAWN BY:	K.C.I.	REV. WATER & SEWER CONNECTION QUANTITIES	1/11/00
CHECKED BY:	J.W.R.	AS BUILT CONDITIONS ADDED TO PLAN	9/11/00
DATE:	FEB. 28, 1997		

VICINITY MAP AND GENERAL NOTES  
 SCALE 1" = 600'  
 600 SCALE MAP NO. 35 BLOCK NO. 14

VILLAGE OF RIVER HILL  
 SECTION 4, AREA 4  
 LOTS 1-216  
 5TH ELECTION DISTRICT  
 CONTRACT NO. 34-3420-D  
 SCALE SEE PLAN  
 SHEET 1 OF 16

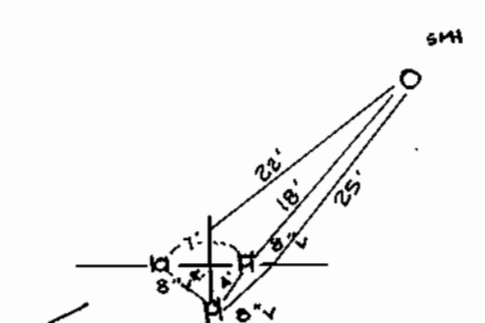






208

N 562000  
E 133300



VILLAGE OF RIVER HILL SECTION 4 AREA 4

25' WETLAND BUFFER

FOREST BUFFER EASEMENT

30' SEWER DRAINAGE & UTILITY EASEMENT

UNDER SEPARATE CONTRACT # 30-3693-D

UNDER SEPARATE CONTRACT # 30-3693-D

UNDER SEPARATE CONTRACT # 30-3693-D

UNDER SEPARATE CONTRACT # 30-3693-D

UNDER SEPARATE CONTRACT # 30-3693-D

UNDER SEPARATE CONTRACT # 30-3693-D

UNDER SEPARATE CONTRACT # 30-3693-D

20' ACCESS SEWER & UTILITY EASEMENT

20' SEWER & UTILITY EASEMENT

20' SEWER & UTILITY EASEMENT

20' SEWER & UTILITY EASEMENT

SMH 410

SMH 409A

SMH 422

SMH 409

SMH 408

SMH 407

SMH 407

SMH 407

SMH 424

SMH 423

SMH 421

SMH 425

SMH 425

SMH 413

SMH 413

SMH 438

SMH 439

SMH 419

SMH 436

SMH 435

SMH 414

SMH 414

SMH 437

SMH 418

SMH 417

SMH 416

SMH 415

SMH 413

SMH 413

SMH 436

SMH 418

SMH 417

SMH 416

SMH 415

SMH 413

SMH 413

SMH 435

SMH 418

SMH 417

SMH 416

SMH 415

SMH 413

SMH 413

SMH 434

SMH 418

SMH 417

SMH 416

SMH 415

SMH 413

SMH 413

SMH 433

SMH 418

SMH 417

SMH 416

SMH 415

SMH 413

SMH 413

SMH 432

SMH 418

SMH 417

SMH 416

SMH 415

SMH 413

SMH 413

SMH 431

SMH 418

SMH 417

SMH 416

SMH 415

SMH 413

SMH 413

SMH 430

SMH 418

SMH 417

SMH 416

SMH 415

SMH 413

SMH 413

SMH 429

SMH 418

SMH 417

SMH 416

SMH 415

SMH 413

SMH 413

SMH 428

SMH 418

SMH 417

SMH 416

SMH 415

SMH 413

SMH 413

SMH 427

SMH 418

SMH 417

SMH 416

SMH 415

SMH 413

SMH 413

SMH 426

SMH 418

SMH 417

SMH 416

SMH 415

SMH 413

SMH 413

SMH 425

SMH 418

SMH 417

SMH 416

SMH 415

SMH 413

SMH 413

SMH 424

SMH 418

SMH 417

SMH 416

SMH 415

SMH 413

SMH 413

SMH 423

SMH 418

SMH 417

SMH 416

SMH 415

SMH 413

SMH 413

SMH 422

SMH 418

SMH 417

SMH 416

SMH 415

SMH 413

SMH 413

SMH 421

SMH 418

SMH 417

SMH 416

SMH 415

SMH 413

SMH 413

SMH 420

SMH 418

SMH 417

SMH 416

SMH 415

SMH 413

SMH 413

SMH 419

SMH 418

SMH 417

SMH 416

SMH 415

SMH 413

SMH 413

SMH 418

SMH 418

SMH 417

SMH 416

SMH 415

SMH 413

SMH 413

SMH 417

SMH 418

SMH 417

SMH 416

SMH 415

SMH 413

SMH 413

SMH 416

SMH 418

SMH 417

SMH 416

SMH 415

SMH 413

SMH 413

SMH 415

SMH 418

SMH 417

SMH 416

SMH 415

SMH 413

SMH 413

SMH 414

SMH 418

SMH 417

SMH 416

SMH 415

SMH 413

SMH 413

SMH 413

SMH 418

SMH 417

SMH 416

SMH 415

SMH 413

SMH 413

SMH 412

SMH 418

SMH 417

SMH 416

SMH 415

SMH 413

SMH 413

SMH 411

SMH 418

SMH 417

SMH 416

SMH 415

SMH 413

SMH 413

SMH 410

SMH 418

SMH 417

SMH 416

SMH 415

SMH 413

SMH 413

SMH 409

SMH 418

SMH 417

SMH 416

SMH 415

SMH 413

SMH 413

SMH 408

SMH 418

SMH 417

SMH 416

SMH 415

SMH 413

SMH 413

SMH 407

SMH 418

SMH 417

SMH 416

SMH 415

SMH 413

SMH 413

SMH 406

SMH 418

SMH 417

SMH 416

SMH 415

SMH 413

SMH 413

SMH 405

SMH 418

SMH 417

SMH 416

SMH 415

SMH 413

SMH 413

SMH 404

SMH 418

SMH 417

SMH 416

SMH 415

SMH 413

SMH 413

SMH 403

SMH 418

SMH 417

SMH 416

SMH 415

SMH 413

SMH 413

SMH 402

SMH 418

SMH 417

SMH 416

SMH 415

SMH 413

SMH 413

SMH 401

SMH 418

SMH 417

SMH 416

SMH 415

SMH 413

SMH 413

SMH 400

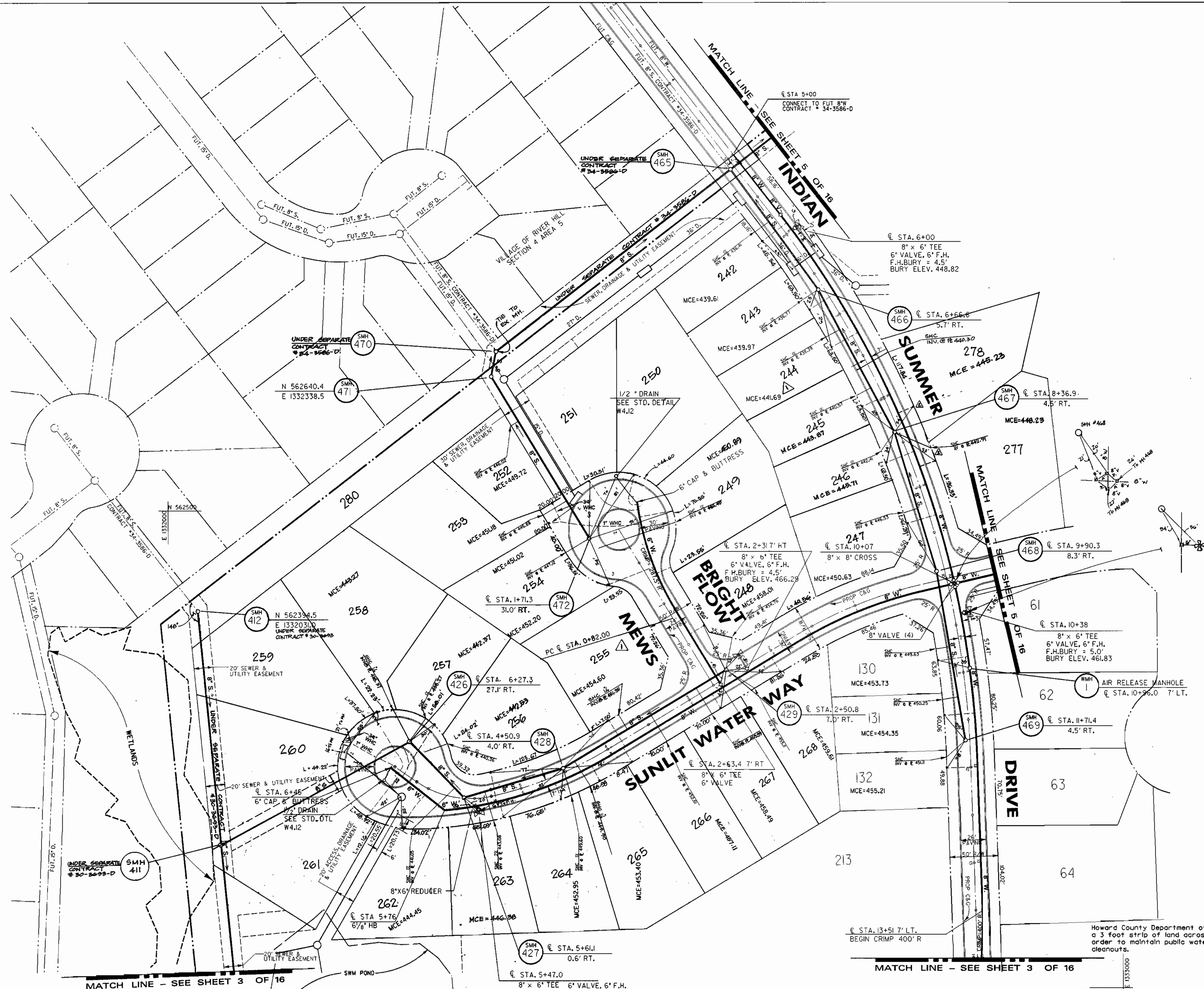
SMH 418

SMH 417

SMH 416



LOT #	FROM	TO	DIST'	REMARKS
180	WH# 1	G.S.H.C.	42'	
181	SMH 460	"	48'	
182	"	"	26'	
242	"	"	70'	
243	"	"	20'	
244	"	"	50'	
245	"	"	55'	
246	"	"	25'	
247	"	"	70'	
248	"	"	48'	
249	"	"	48'	
250	"	"	"	
251	"	"	"	
252	SMH 472	"	"	
253	"	"	54'	
254	"	"	28'	
255	"	"	60'	
257	"	"	50'	
258	"	"	"	
259	"	"	"	
260	"	"	"	
261	"	"	"	
262	SMH 427	"	43'	
263	"	"	20'	
264	"	"	28'	
265	"	"	34'	
266	G.S.H.C. LOT 28	"	48'	
267	SMH 422	"	48'	
268	"	"	25'	
277	SMH 467	"	40'	
278	"	"	84'	



Howard County Department of Public Works is hereby granted permission to access a 3 foot strip of land across the frontage of all private lots shown on these plans in order to maintain public water and sewer house connections at the curb stops and/or cleanouts.

(MCE = MINIMUM CELLAR ELEVATION THAT CAN BE SERVED BY GRAVITY)

DEPARTMENT OF PUBLIC WORKS  
HOWARD COUNTY, MARYLAND

DEPARTMENT OF PLANNING & ZONING  
HOWARD COUNTY, MARYLAND

*John S. ...* 4/14/97  
CHIEF - BUREAU OF UTILITIES - DATE

*John S. ...* 4/22/97  
CHIEF - DEVELOPMENT ENGINEERING DIVISION - DATE

**DMW**  
Daft · McCune · Walker, Inc.

A Team of Land Planners, Landscape Architects, Engineers, Surveyors & Environmental Professionals

200 East Pennsylvania Avenue  
Towson, Maryland 21286  
410 296 3333  
Fax 296 4705

STATE OF MARYLAND  
PROFESSIONAL ENGINEER

DESIGN BY:	DMW	SMH'S 411 & 412 IN SEPARATE CONTRACT LOT REVISED	5/29/98
JWS	DMW	ELIMINATE EXTRA WHC-LOT 277; ADD WHC-LOT 278	1/11/00
DRAWN BY:	K.O.I.	AS-BUILT CONDITIONS ADDED TO PLAN	10/16/00
CHECKED BY:	JWR		
DATE:	FEB. 28, 1997		
BY	NO.	REVISION	DATE

WATER AND SEWER PLAN

600 SCALE MAP NO. 35 BLOCK NO. 14

**VILLAGE OF RIVER HILL**  
SECTION 4, AREA 4  
LOTS 1-216  
5TH ELECTION DISTRICT  
CONTRACT NO. 34-3420-D

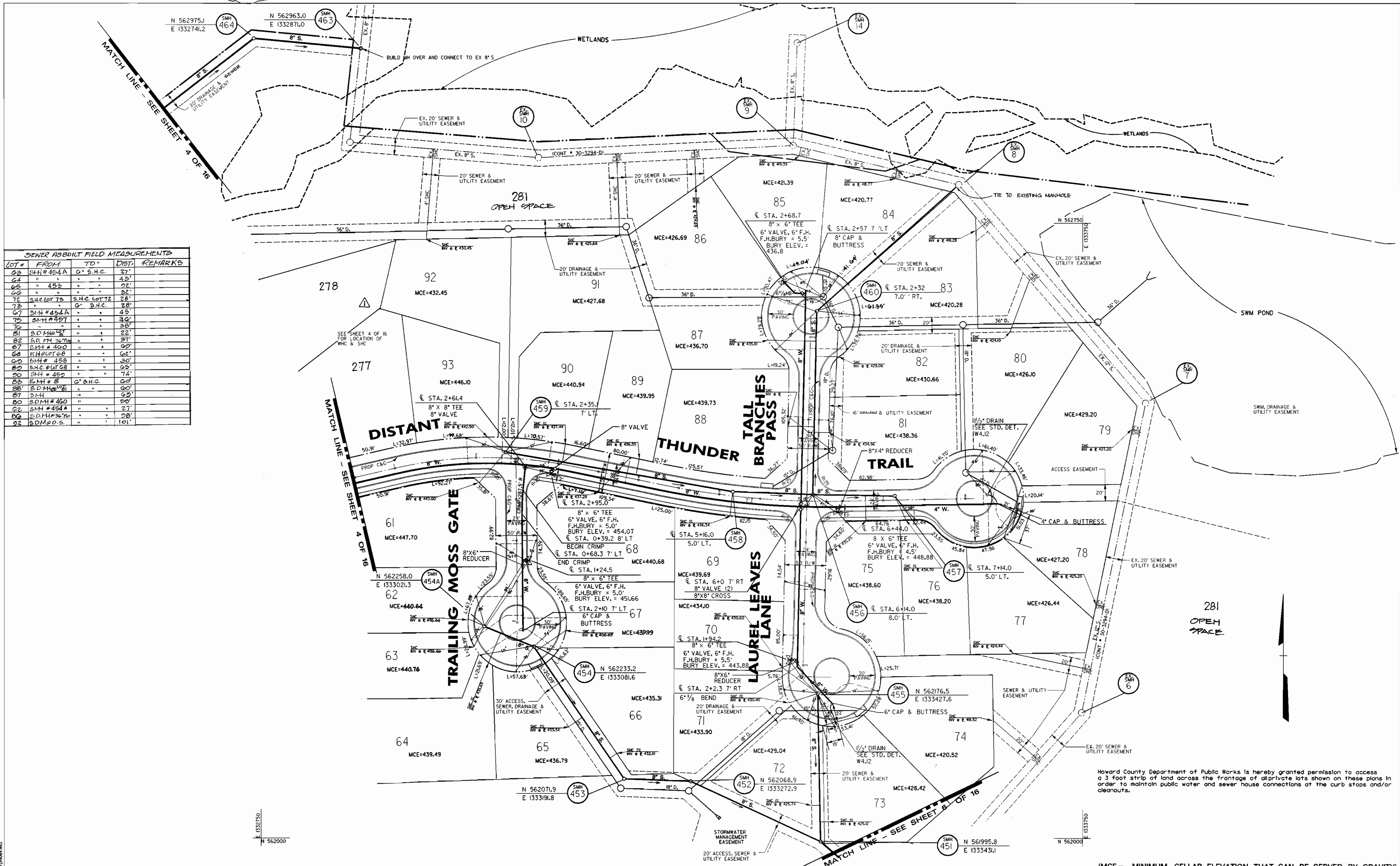
SCALE  
1" = 50'

SHEET  
4 OF 16

Wed Mar 26 11:01:23 1997 d:\54064\3420\4\51\1.dwg



LOT #	FROM	TO	DIST.	REMARKS
62	SMH # 454A	0' S.H.C.	21'	
64	"	"	43'	
65	"	452	"	
66	"	"	22'	
72	S.H.C. LOT 72	S.H.C. LOT 72	28'	
67	SMH # 454A	"	45'	
75	SMH # 457	"	30'	
76	"	"	38'	
81	S.D.M.H. # 31	"	22'	
82	S.D.M.H. # 31	"	27'	
87	S.M.H. # 460	"	00'	
68	EXH. LOT 68	"	62'	
69	SMH # 458	"	30'	
80	S.H.C. LOT 80	"	09'	
80	SMH # 452	"	74'	
83	E.M.H. # 8	G' S.H.C.	00'	
88	S.D.M.H. # 31	"	00'	
87	S.M.H.	"	00'	
80	S.D.M.H. # 460	"	50'	
82	SMH # 454A	"	27'	
86	S.D.M.H. # 36	"	08'	
92	S.D.M.H. # 0.5.	"	101'	



Howard County Department of Public Works is hereby granted permission to access a 3 foot strip of land across the frontage of all private lots shown on these plans in order to maintain public water and sewer house connections at the curb stops and/or cleanouts.

(MCE = MINIMUM CELLAR ELEVATION THAT CAN BE SERVED BY GRAVITY)

DEPARTMENT OF PUBLIC WORKS  
HOWARD COUNTY, MARYLAND

*John R. ...* 4-14-97  
CHIEF - BUREAU OF UTILITIES - DATE

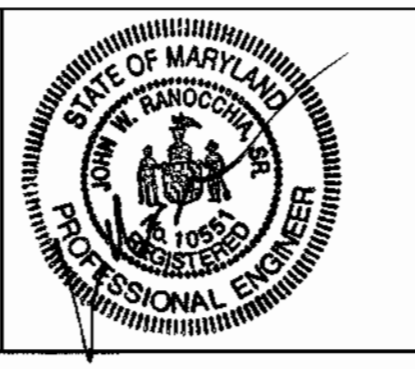
DEPARTMENT OF PLANNING & ZONING  
HOWARD COUNTY, MARYLAND

*...* 4/22/97  
CHIEF - DEVELOPMENT ENGINEERING DIVISION - DATE

**DMW**  
Daft · McCune · Walker, Inc.

A Team of Land Planners,  
Landscape Architects,  
Engineers, Surveyors &  
Environmental Professionals

Fax 296 4705



DESIGN BY:	JWS	DATE:	5/29/96
DRAWN BY:	K.C.I.	DATE:	2/21/00
CHECKED BY:	JWR	DATE:	
DATE:	FEB 28, 1997	BY NO.	

LOT LINES ON LOTS 217, 218, 261	5/29/96
AS BUILT CONDITIONS ADDED TO PLAN	2/21/00
REVISION	DATE
600 SCALE MAP NO. 35	BLOCK NO. 14

**WATER AND SEWER PLAN**

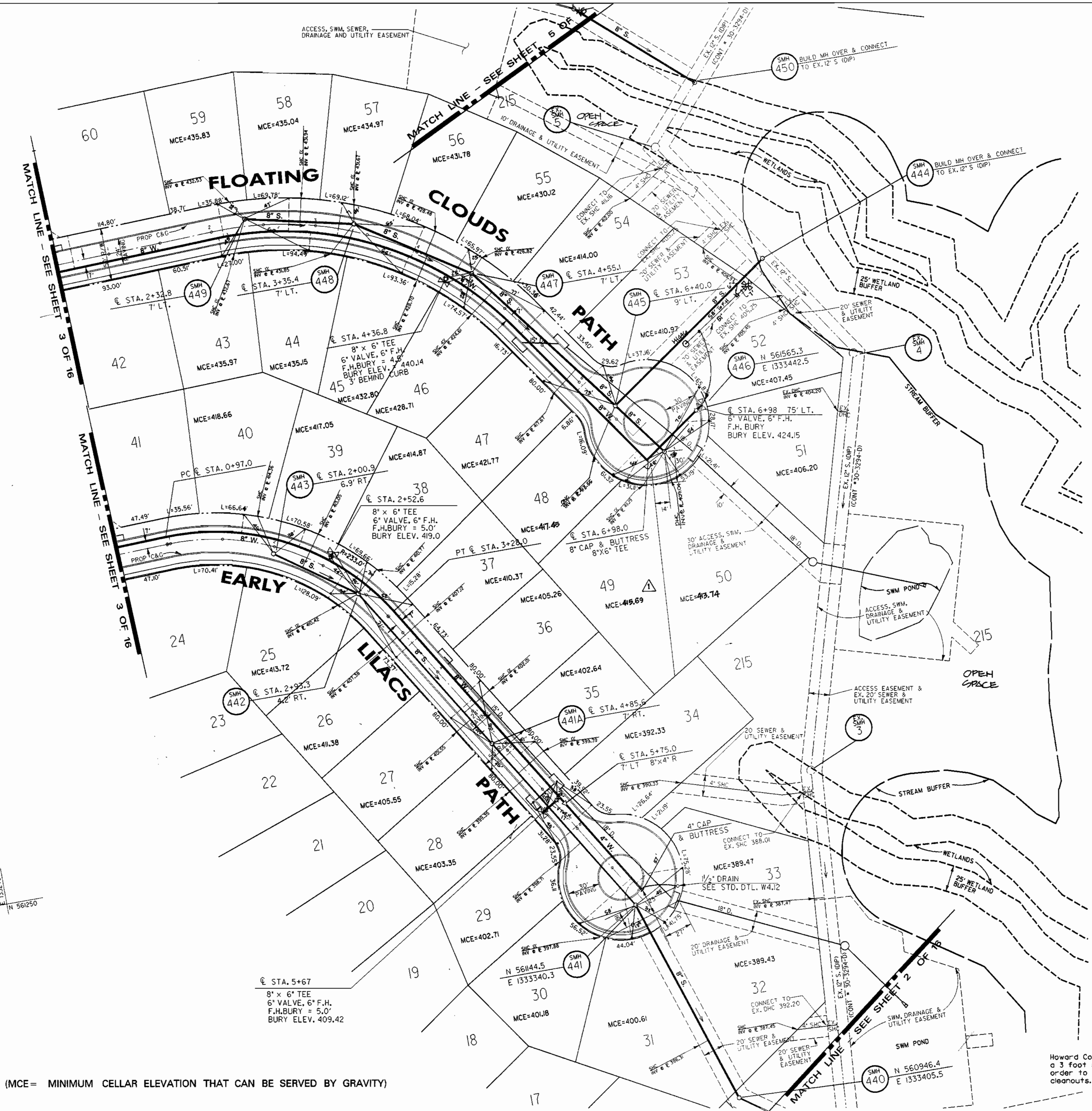
**VILLAGE OF RIVER HILL**  
SECTION 4, AREA 4  
LOTS 1-216  
5TH ELECTION DISTRICT  
CONTRACT NO. 34-3420-D

SCALE  
1" = 50'

SHEET  
5 OF 16



LOT #	FROM	TO	DIST.	REMARKS
26	SMH # 442	G.S.H.C.	23.6	
26	"	"	55.8	
27	S.O. INLET	"	0.92	374' FROM MH 441A
28	SMH # 441A	"	44.6	
29	"	441	58.6	53' FROM INLET 28
30	"	"	48.0	
31	"	440	65.0	
35	"	441A	51.0	26.3' FROM INLET
36	"	441A	52.4	47.5' FROM INLET
37	"	442	67.3	36.0' FROM INLET
38	"	"	29.4	29' FROM MH 442
39	"	442	49.0	
40	"	"	39.8	121' FROM MH # 442
42	S.D.M.H. SW.M.	"	21.0	MH LOC. OS.W.M. FOUND
43	"	442	25.0	
44	"	442	26.0	
45	"	"	22.0	
46	"	"	28.0	
47	"	445	60.0	
48	"	"	52.0	
49	"	446	29.0	
50	"	"	27.0	
52	"	444	52.0	REAR PROP
53	"	"	57.0	REAR PROP
54	EX. MH # 5	"	55.0	REAR PROP
55	SMH # 447	"	18.0	REAR PROP
56	"	"	54.0	
57	SMH # 448	"	18.0	
58	"	442	58.0	
59	"	"	21.0	



(MCE = MINIMUM CELLAR ELEVATION THAT CAN BE SERVED BY GRAVITY)

Howard County Department of Public Works is hereby granted permission to access a 3 foot strip of land across the frontage of all private lots shown on these plans in order to maintain public water and sewer house connections at the curb stops and/or cleanouts.

DEPARTMENT OF PUBLIC WORKS  
HOWARD COUNTY, MARYLAND

*R. L. Bennett* 4-14-97  
CHIEF - BUREAU OF UTILITIES - DATE

DEPARTMENT OF PLANNING & ZONING  
HOWARD COUNTY, MARYLAND

*John J. ...*  
CHIEF - DEVELOPMENT ENGINEERING DIVISION - DATE

**DMW**  
Daft · McCune · Walker, Inc.  
A Team of Land Planners, 200 East Pennsylvania Avenue  
Landscape Architects, Towson, Maryland 21286  
Engineers, Surveyors & Environmental Professionals  
410 296 3333  
Fax 296 4705

DESIGN BY:	JWS	DMW	SHC'S AND MCE'S	5/28/98
DRAWN BY:	JEF	K.R.I.	AS-BUILT CONDITIONS ADDED TO PLAN	10/1/00
CHECKED BY:	JWR			
DATE:	FEB. 28, 1997	BY	NO.	REVISION

WATER AND SEWER PLAN

600 SCALE MAP NO. 35 BLOCK NO. 14

**VILLAGE OF RIVER HILL**  
SECTION 4, AREA 4  
LOTS 1-216  
5TH ELECTION DISTRICT  
CONTRACT NO. 34-3420-D

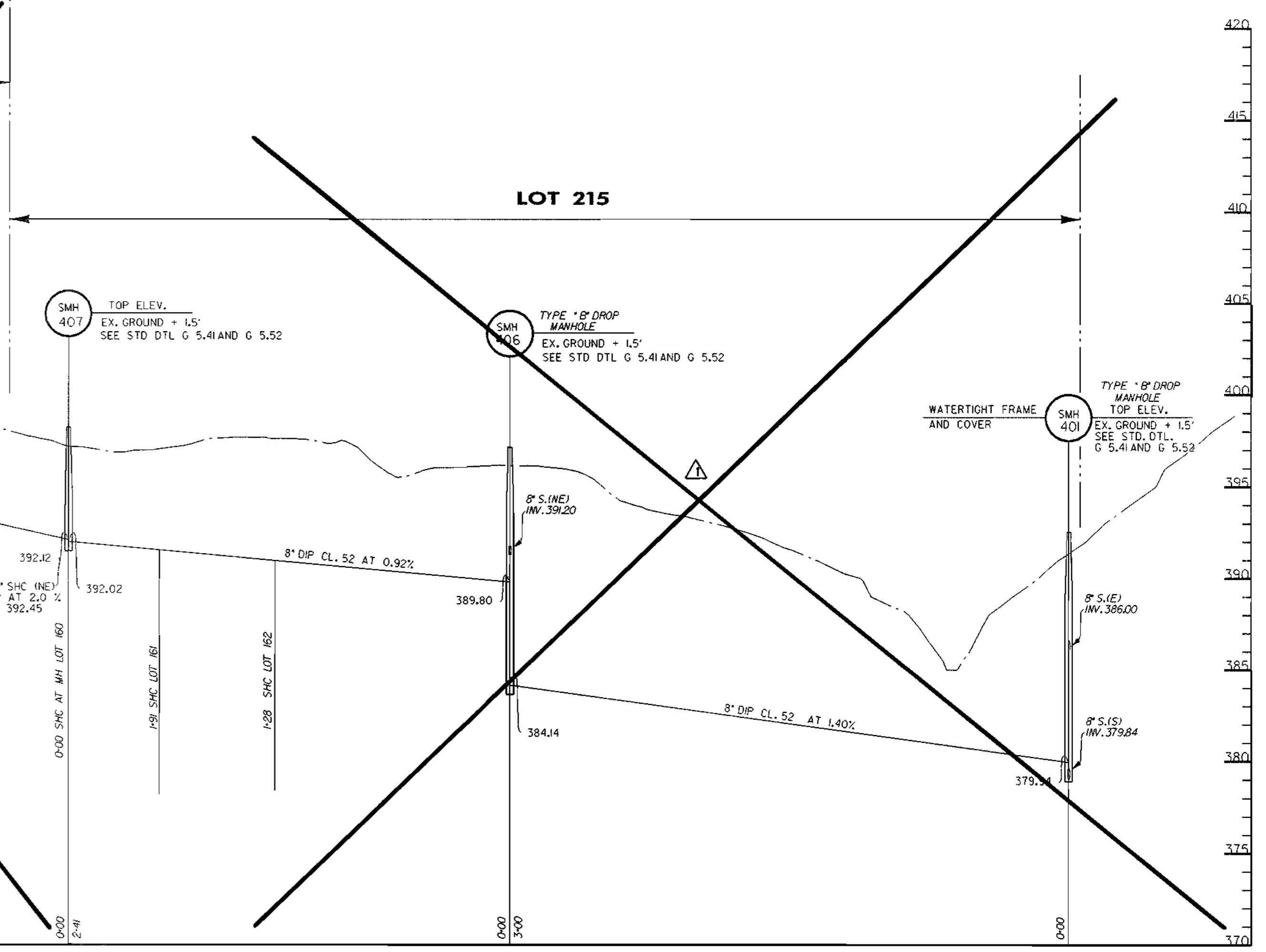
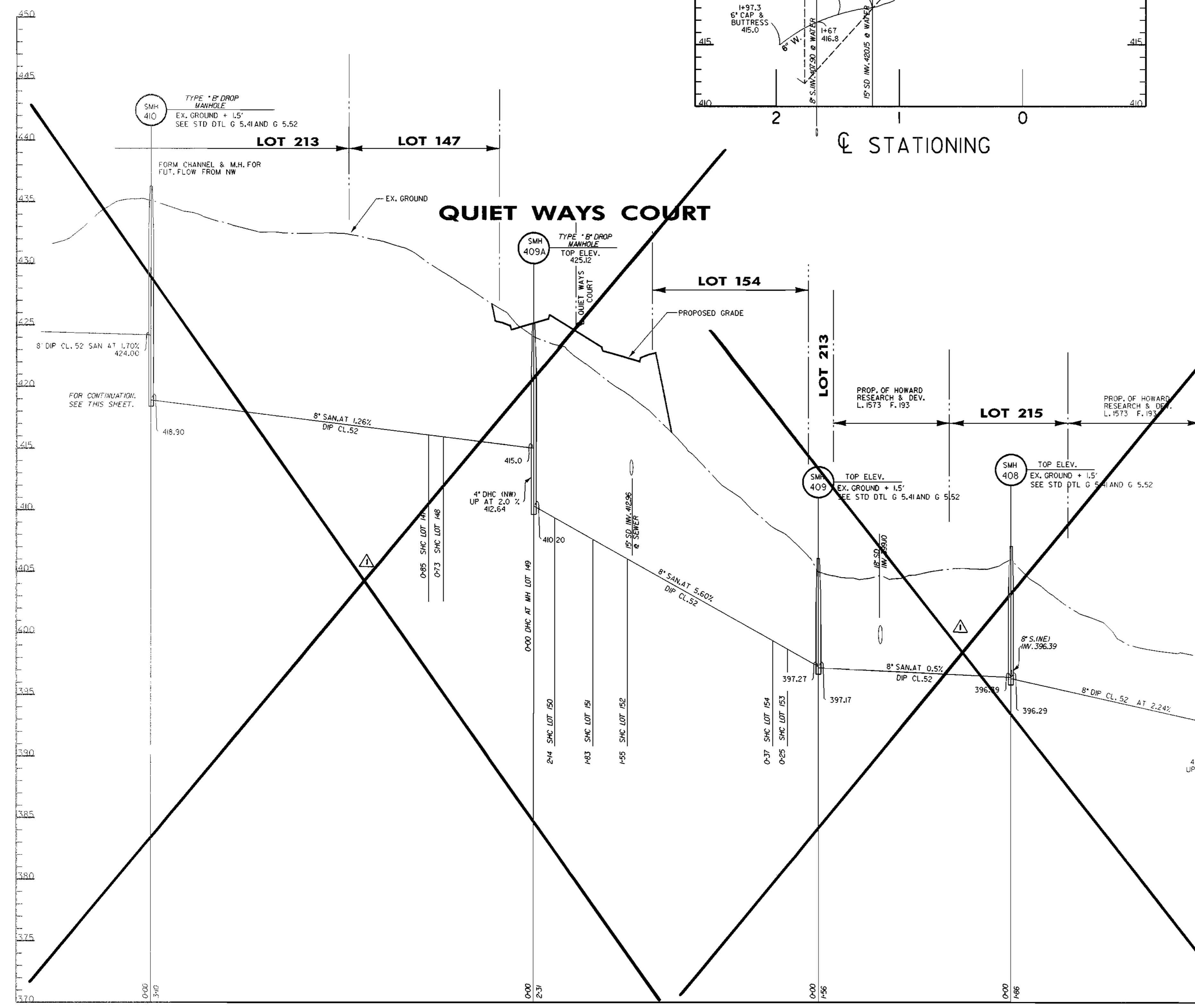
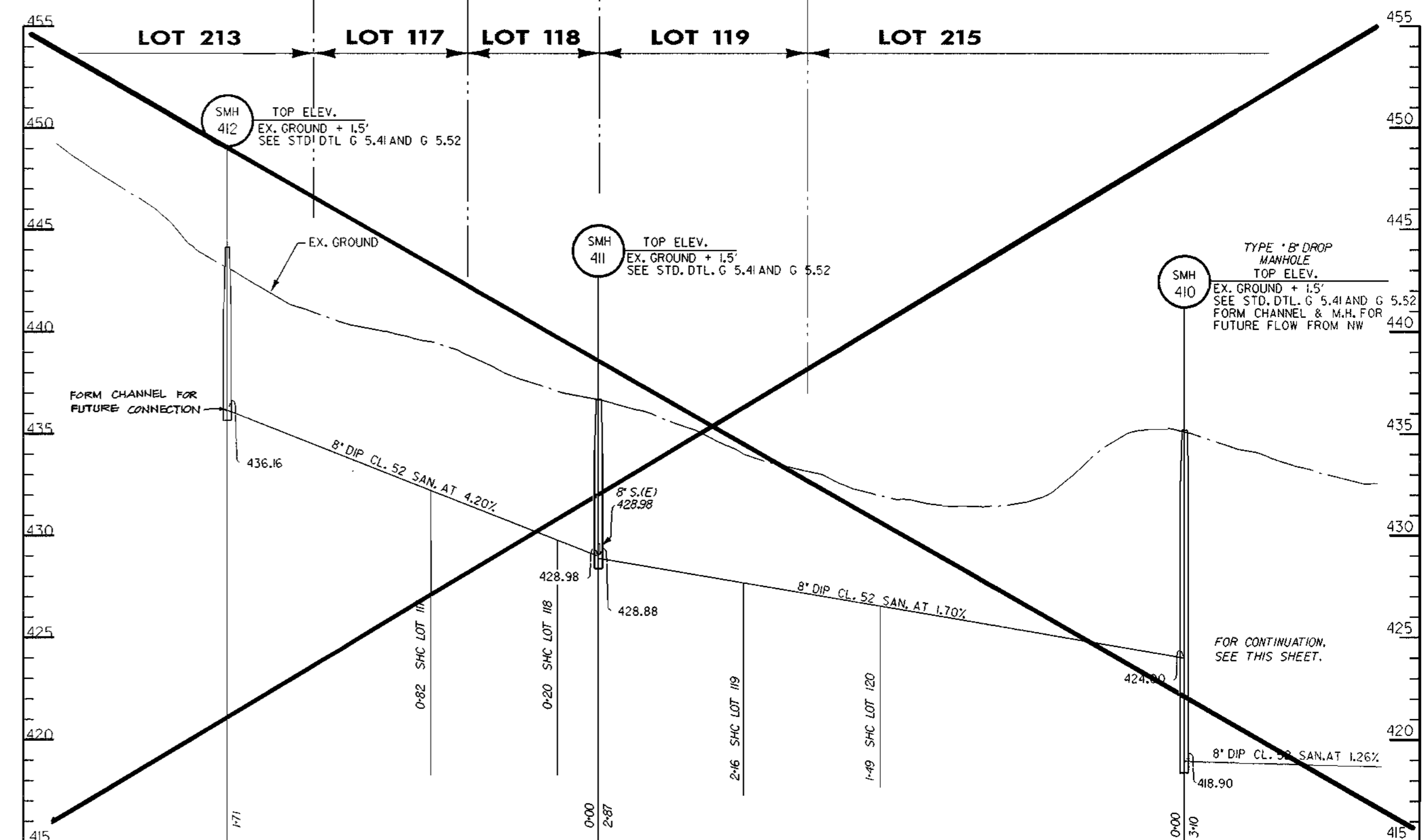
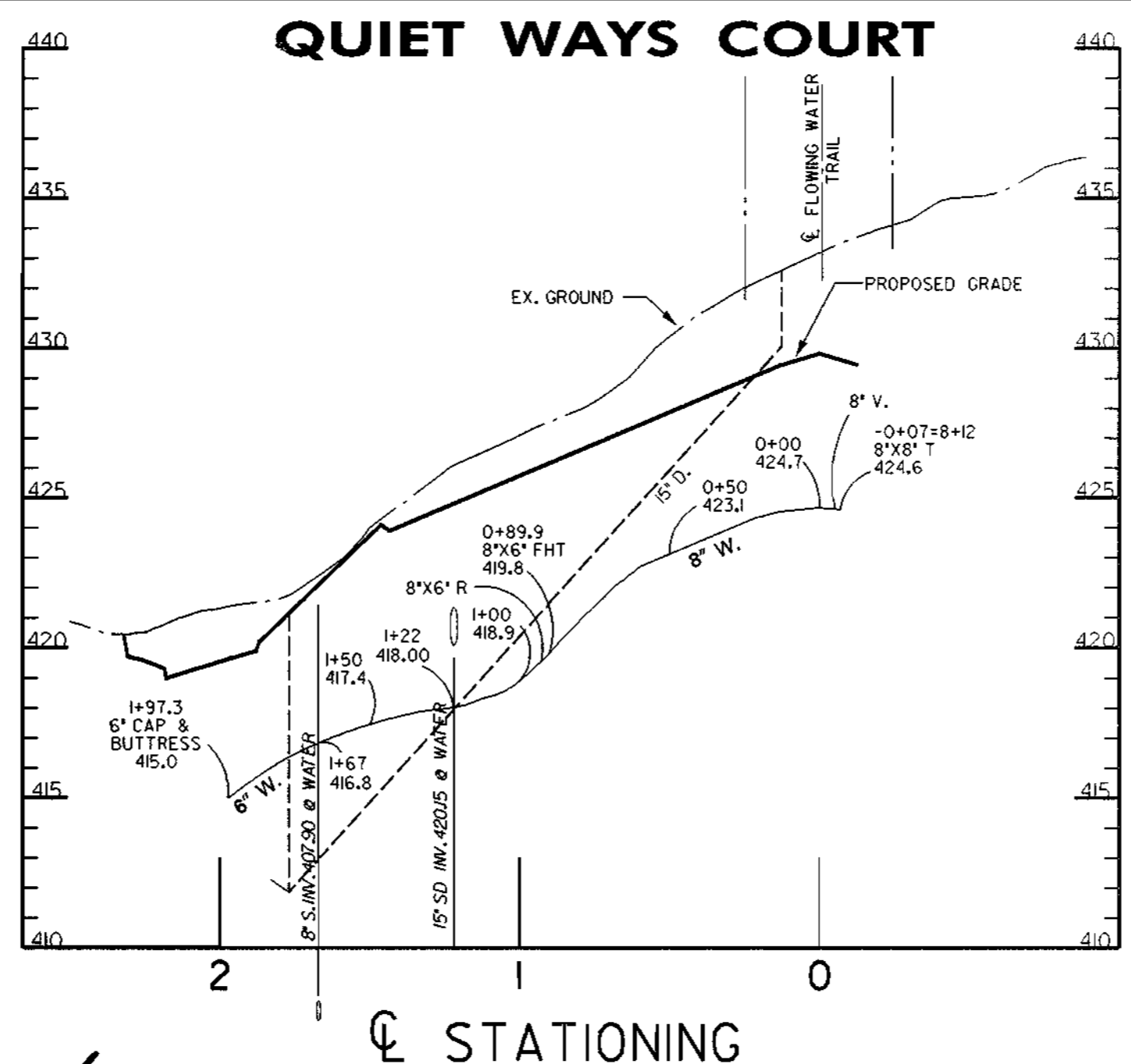
SCALE  
1" = 50'  
SHEET  
6 OF 16

Sun Mar 30 20:26:08 1997 d:\p\4064\4064.dwg

Sun Mar 30 20:26:08 1997 d:\p\4064\4064.dwg







Tue Mar 25 14:47:05 1997 c:\pwork\94064.dwg

DEPARTMENT OF PUBLIC WORKS  
HOWARD COUNTY, MARYLAND

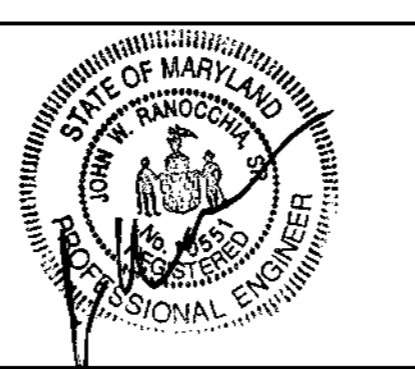
*Robert W. Benin* 4-14-97  
CHIEF - BUREAU OF UTILITIES - DATE

DEPARTMENT OF PLANNING & ZONING  
HOWARD COUNTY, MARYLAND

*Chris D. ...* 4/2/97  
CHIEF - DEVELOPMENT ENGINEERING DIVISION - DATE

**DMW**  
Daft · McCune · Walker, Inc.

A Team of Land Planners, 200 East Pennsylvania Avenue  
Landscape Architects, Towson, Maryland 21286  
Engineers, Surveyors & Environmental Professionals 410 296 3333  
Fax 296 4705



DESIGN BY:	PMW	SMH 412 THRU 401 UNDER SEPARATE CONTRACT	5/9/96
DRAWN BY:	KDE		
CHECKED BY:	JWR		
DATE:	FEB. 28, 1997		
BY NO.		REVISION	DATE

WATER AND SEWER  
PROFILES

600 SCALE MAP NO. 85 BLOCK NO. 14

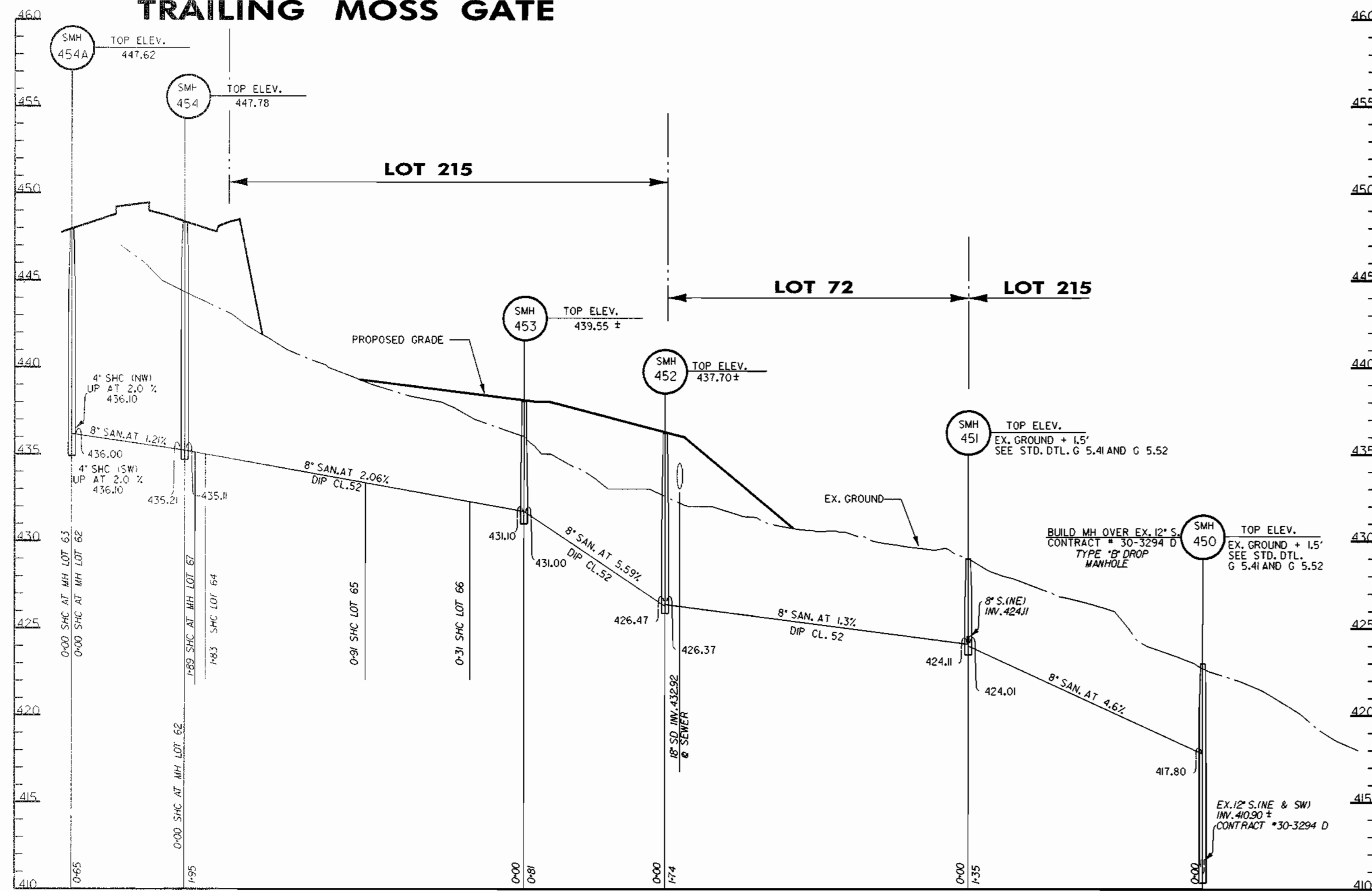
**VILLAGE OF RIVER HILL**  
SECTION 4, AREA 4  
LOTS 1-216  
5TH ELECTION DISTRICT  
CONTRACT NO. 34-3420-D

SCALE  
1" = 50' HOR.  
1" = 5' VER.

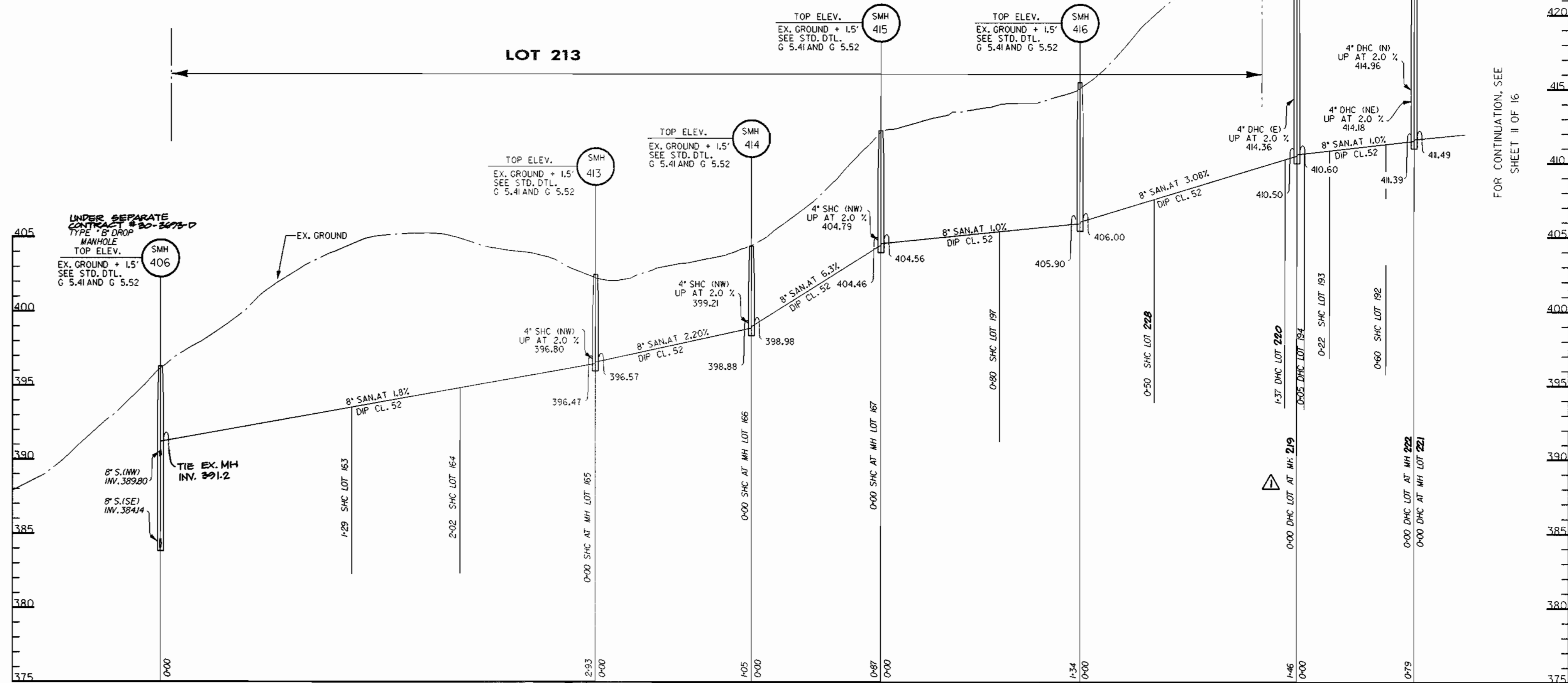
SHEET  
8 OF 16



**TRAILING MOSS GATE**



**LOT 213**



FOR CONTINUATION, SEE SHEET # OF 16

Tue Mar 25 15:08:09 1997 d:\work\dmw\ksp

DEPARTMENT OF PUBLIC WORKS  
HOWARD COUNTY, MARYLAND

*Robert Berman* 4-14-97  
CHIEF - BUREAU OF UTILITIES - DATE

DEPARTMENT OF PLANNING & ZONING  
HOWARD COUNTY, MARYLAND

*Michael D. ...* 4/26/97  
CHIEF - DEVELOPMENT ENGINEERING DIVISION - DATE

**DMW**  
Daft · McCune · Walker, Inc.

A Team of Land Planners, 200 East Pennsylvania Avenue  
Landscape Architects, Towson, Maryland 21286  
Engineers, Surveyors & Environmental Professionals, 410 296 3333  
Fax 296 4705



DESIGN BY:	JWS	DATE:	FEB. 28, 1997
DRAWN BY:	KDE	BY:	
CHECKED BY:	JWR	NO.:	
DATE:		REVISION:	

DMW	△	LOTS REVISED	5/29/98
600 SCALE MAP NO. 35		BLOCK NO. 14	

**WATER AND SEWER PROFILES**

**VILLAGE OF RIVER HILL**  
SECTION 4, AREA 4  
LOTS 1-216  
5TH ELECTION DISTRICT  
CONTRACT NO. 34-3420-D

SCALE  
1" = 60' HOR.  
1" = 5' VER.

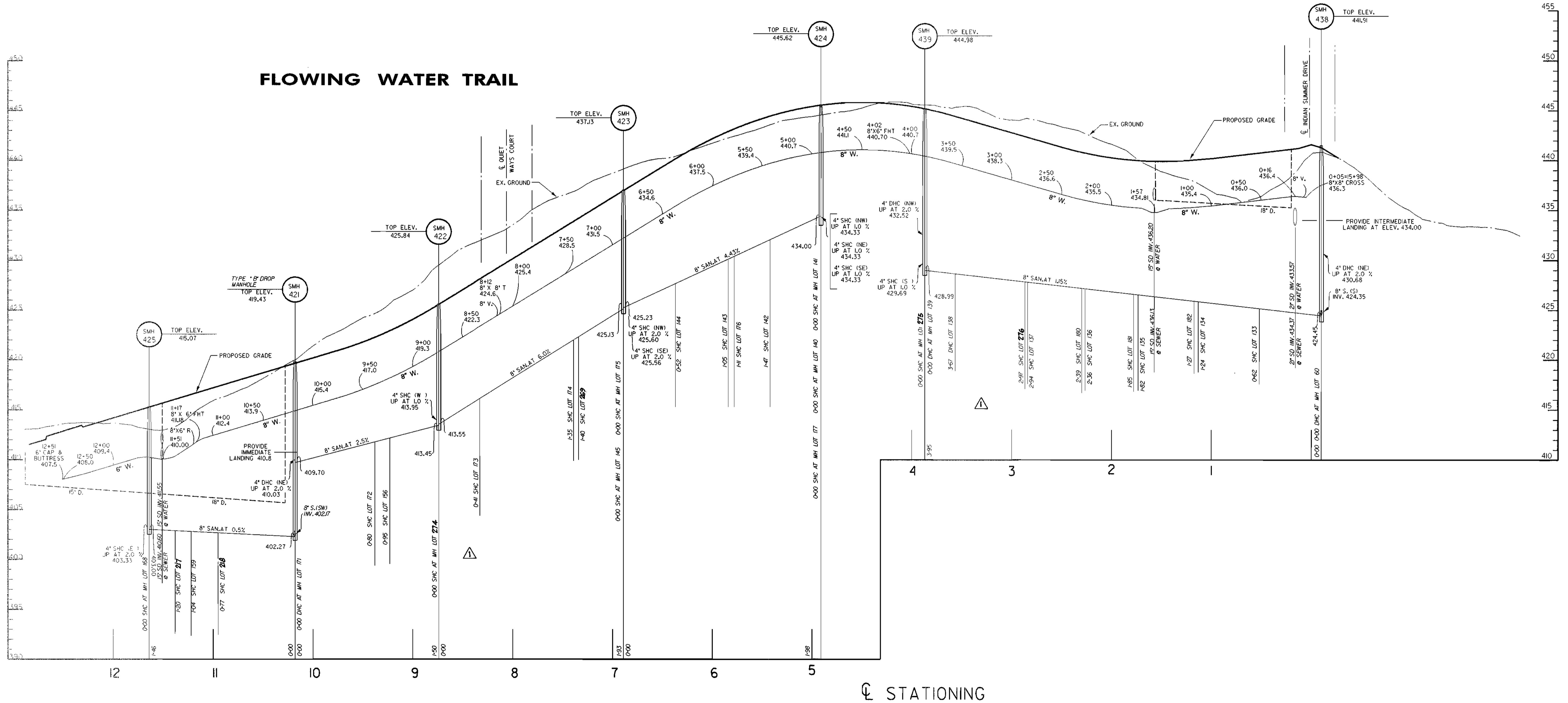
SHEET  
9 OF 16

Tue Mar 25 15:08:09 1997 6:\9406\94064.sp



# FLOWING WATER TRAIL

# FLOWING WATER TRAIL



STATIONING

Tue Mar 25 11:43:51 1997 d:\pwork\34424.dwg

DEPARTMENT OF PUBLIC WORKS  
HOWARD COUNTY, MARYLAND

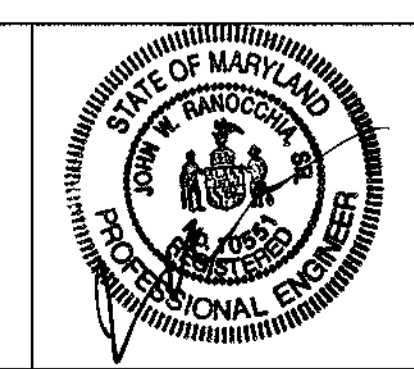
*R. L. ...* 4-14-97  
CHIEF - BUREAU OF UTILITIES - DATE

DEPARTMENT OF PLANNING & ZONING  
HOWARD COUNTY, MARYLAND

*...* 4/22/97  
CHIEF - DEVELOPMENT ENGINEERING DIVISION - DATE

**DMW**  
Daft · McCune · Walker, Inc.

A Team of Land Planners, 200 East Pennsylvania Avenue, Towson, Maryland 21286  
Landscape Architects, 410 296 3333  
Engineers, Surveyors & Environmental Professionals Fax 296 4705



DESIGN BY: JWS	DMW	LOTS	REVISED	5/29/96
DRAWN BY: KDE				
CHECKED BY: JWR				
DATE: FEB. 28, 1997	BY	NO.	REVISION	DATE

WATER AND SEWER  
PROFILES

600 SCALE MAP NO. 35 BLOCK NO. 14

**VILLAGE OF RIVER HILL**  
SECTION 4, AREA 4  
LOTS 1-216  
5TH ELECTION DISTRICT  
CONTRACT NO. 34-3420-D

SCALE  
1" = 50' HOR.  
1" = 5' VER.

SHEET  
10 OF 16







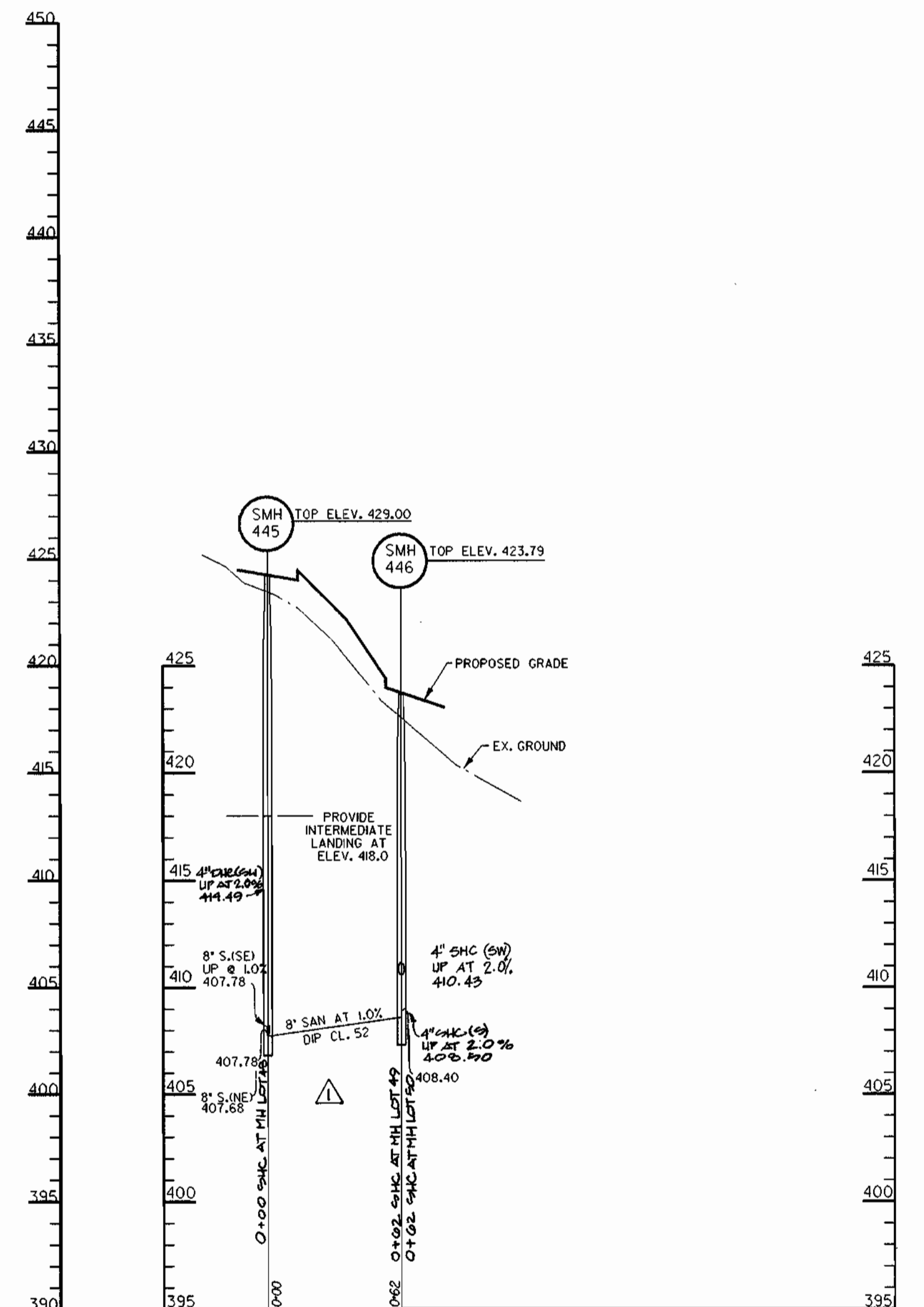
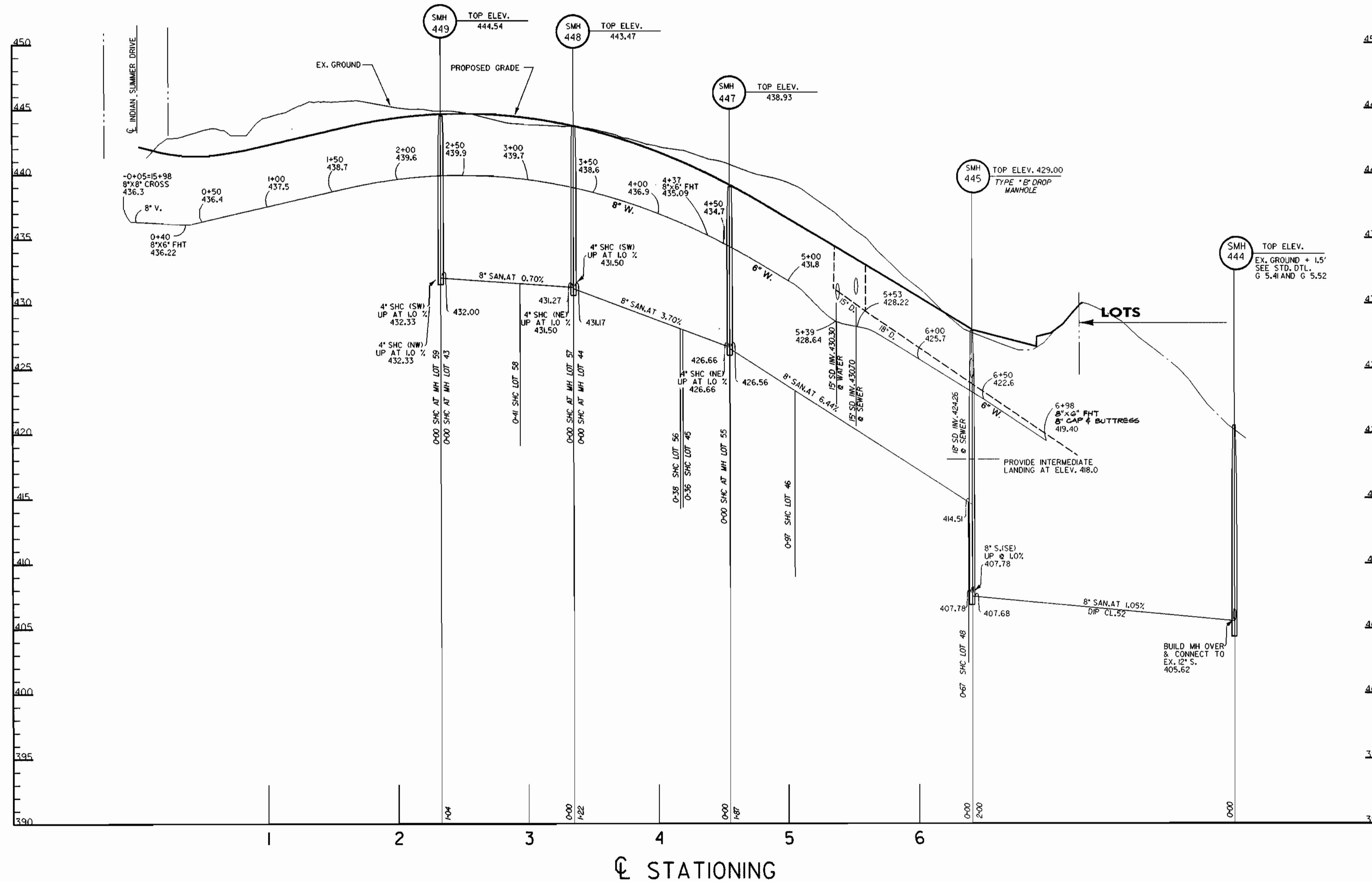








# FLOATING CLOUDS PATH



Tue Mar 25 18:52:04 1997 d:\vork\1996\4.spr

DEPARTMENT OF PUBLIC WORKS  
HOWARD COUNTY, MARYLAND

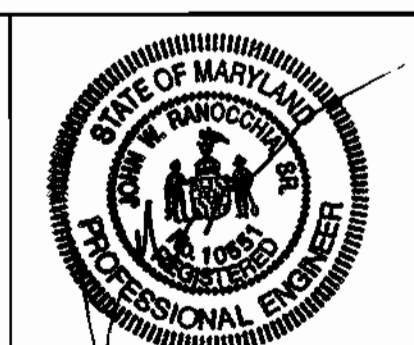
*Robert Berman* 4-14-97  
CHIEF - BUREAU OF UTILITIES - DATE

DEPARTMENT OF PLANNING & ZONING  
HOWARD COUNTY, MARYLAND

*John P. ...* 4/2/97  
CHIEF - DEVELOPMENT ENGINEERING DIVISION - DATE

**DMW**  
Daft · McCune · Walker, Inc.

A Team of Land Planners, 200 East Pennsylvania Avenue  
Landscape Architects, Towson, Maryland 21286  
Engineers, Surveyors & Environmental Professionals 410 296 3333  
Fax 296 4705



DESIGN BY:	JWS	DMW	SHC's MOVED	3/22/97
DRAWN BY:	KDE			
CHECKED BY:	JWR			
DATE:	FEB. 28, 1997	BY NO.	REVISION	DATE

WATER AND SEWER  
PROFILES

600 SCALE MAP NO. 35 BLOCK NO. 14

**VILLAGE OF RIVER HILL**  
SECTION 4, AREA 4  
LOTS 1-216  
5TH ELECTION DISTRICT  
CONTRACT NO. 34-3420-D

SCALE  
1" = 60' HOR.  
1" = 8' VER.

SHEET  
15 OF 16



