
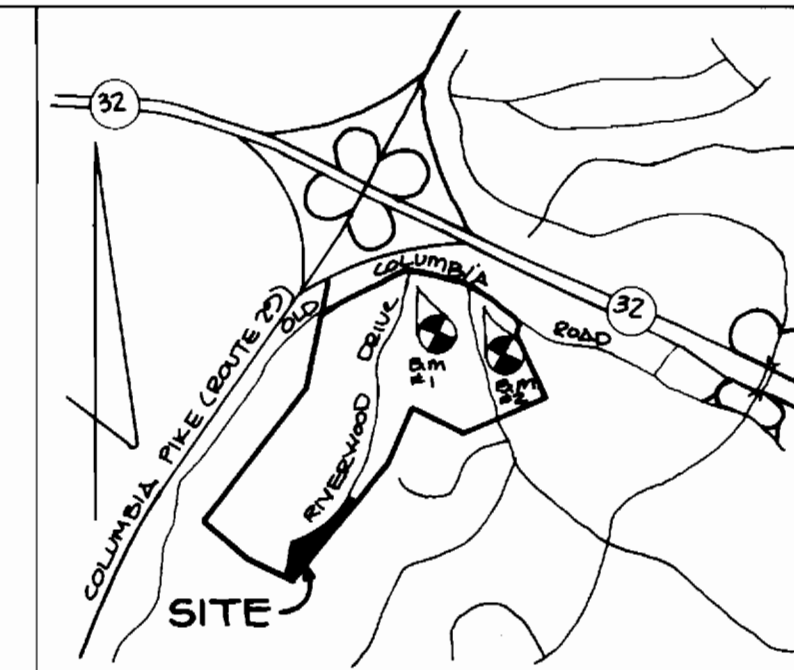


GENERAL NOTES

- Approximate location of existing mains are shown. The contractor shall take all necessary precautions to protect existing mains and services and maintain uninterrupted supply. Any damage incurred shall be repaired immediately to the satisfaction of the Engineer at the Contractor's expense.
- All horizontal controls are based on Maryland State Coordinates.
- All vertical controls are based on U.S.G.S. data.
- All pipe elevations shown are invert elevations.
- Clear all utilities by a minimum of 6". Clear all poles by 2' 0" minimum or tunnels as required. The owner has contacted the utility companies and has made arrangements for bracing of poles as shown on the drawings. In the event the contractor's work requires the bracing of additional poles, any cost incurred by the owner for bracing of additional poles or damages shall be deducted from money owed the contractor. The contractor shall coordinate with the utility companies to schedule the bracing of the poles.
- For details not shown on the drawings, and for materials and construction methods use Howard County Design Manual, Volume IV, Standard Specifications and Detail for Construction (Latest Edition). The contractor shall have a copy of Volume IV on the job.
- Where test pits have been made on existing utilities, they are noted by the symbol  at the location of the test pit. A note or notes containing the results of the test pit or pits is included on the drawings. Existing utilities in the vicinity of the proposed work for which test pits have not been dug shall be located by the contractor two weeks in advance of construction operations at his own expense.
- Contractor shall notify the following utility companies or agencies at least five working days before starting work shown on these plans:

State Highway Administration	531-5533
Baltimore Gas & Electric Co. Contractor Services	850-4620
Baltimore Gas & Electric Co. Underground Damage Control	787-9068
Miss Utility	1-800-257-7777
Colonial Pipeline Co.	795-1390
Bureau of Utilities, Howard County Department of Public Works	313-4900
- Trees and shrubs are to be protected from damage to maximum extent. Trees and shrubs located within the construction strip are not to be removed or damaged by the contractor.
- Contractor shall remove trees, stumps and roots along line of excavation. Payment for such removal shall be included in the unit price bid for construction of the main.
- All sewer mains shall be DIP, RCP, VCPX, CSPX, RCCP, and PVC unless otherwise noted.
- All manholes shall be 4' 0" inside diameter unless otherwise noted.
- Force mains shall be DIP only.
- Manhole must be precast concrete structures. (See detail this sheet.)
- Manholes designated W.T. in plan and profile shall have watertight frame and covers, Standard Detail G5.52. Where watertight manhole frame and cover is used, set top of frame 1' 6" above finished grade unless otherwise noted on the drawings.
- All fill areas within future roadway and under structures to be compacted to a minimum of 95% compaction as determined by AASHTO T-180.
- Valves adjacent to tees shall be strapped to tees.
- All water mains to be D.I.P. Class 52 unless otherwise noted.
- Tops of all water mains to have a minimum of 3 1/2' cover unless otherwise noted.
- All fittings shall be buttressed or anchored with concrete in accordance with the Standard Details unless otherwise provided for on the drawings.
- Fire hydrants shall be set to the bury line elevations shown on the drawings. All fire hydrants shall be restrained and buttressed with concrete in accordance with Standard Details. Soil around the fire hydrant shall be compacted in accordance with Section 1000 and 1005 of the Standard Specifications.
- The contractor shall notify the Bureau of Highways, Howard County, at (410) 313-2450 at least five working days before any open cut of any County road or boring/jacking operation in County roads for laying water/sewer mains or house connections. The approval of these drawings will constitute compliance with DPW requirements per Section 18.114(a) of the Howard County Code.

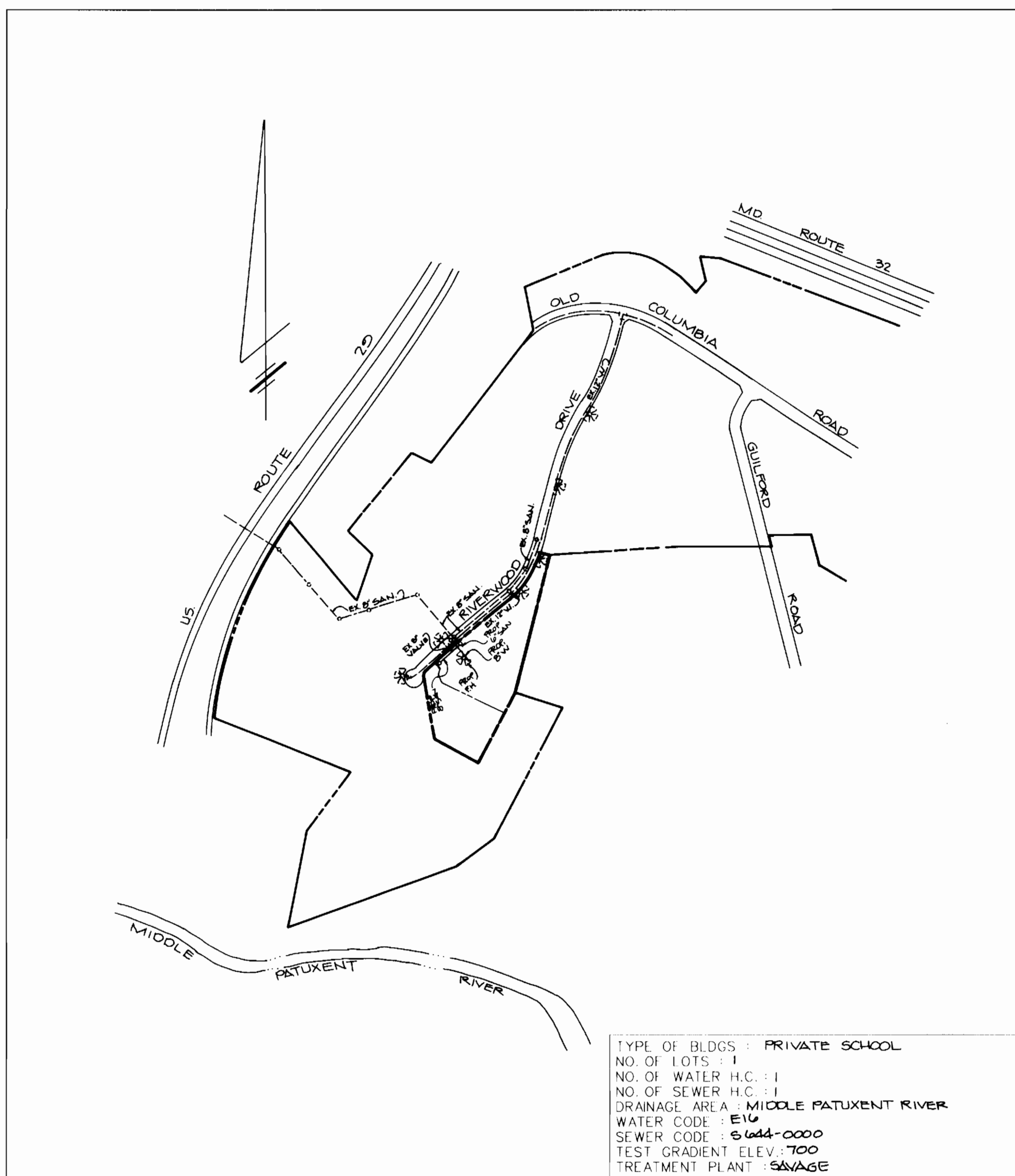
- The contractor shall not operate any water main valves on the existing water system.
- All water house connections shall be for inside meter setting unless otherwise noted on plans or in specifications.
- Manholes shown with 12" and 16" walls are for brick manholes only.



VICINITY MAP
SCALE: 1" = 2000'

BM 1 ELEV. 392.27
OLD COLUMBIA RD. STA. 81+20.30' LEFT OF CONC. MONUMENT
2840, N489908.22 E 835043.93

BM 2 ELEV. 364.41
STA. 90+70.34' RIGHT OF CONC. MON. 1366; N489553.51
E 836824.07



LOCATION MAP
SCALE: 1" = 600'

TYPE OF BLDGS: PRIVATE SCHOOL
NO. OF LOTS: 1
NO. OF WATER H.C.: 1
NO. OF SEWER H.C.: 1
DRAINAGE AREA: MIDDLE PATUXENT RIVER
WATER CODE: E10
SEWER CODE: S644-0000
TEST GRADIENT ELEV.: 700
TREATMENT PLANT: SAVAGE

ITEMS	QUANTITIES ESTIMATED	AS-BUILT		
		QUANTITIES	TYPE	MANUFACTURER/SUPPLIER
6" SAN	6 LF	6 LF	PVC	I.M. MFG
8" SAN	206 LF	206 LF	PVC	I.M. MFG
TERMINAL MANHOLE	1 EA	1 EA	PRECAST CONC.	ATLANTIC CONC.
DROP MANHOLE - TYPE A	1 EA	1 EA	PRECAST CONC.	ATLANTIC CONC.
4" DIP	7 LF	7 LF	DIP	ATLANTIC STATES
8" DIP	90 LF	90 LF	DIP	ATLANTIC STATES
8" X 8" TEE	1 EA	1 EA	DIP	UNION FOUNDRY
4" VALVE	1 EA	1 EA	GATE VALVE	AMER. FLOW CONTROL
8" 1/8" BEND (VERTICAL)	2 EA	2 EA	DIP	UNION FOUNDRY
8" VALVE # VAULT	1 EA	1 EA	CAPT. IRON	AMER. FLOW CONTROL
8" VALVE # VAULT	1 EA	1 EA	GATE VALVE	AMER. FLOW CONTROL

NAME OF UTILITY CONTRACTOR: C. J. MILLER

SURVEY AND DRAFTING DIVISION AS-BUILT DATE _____

SEDIMENT CONTROL MEASURES FOR THIS CONTRACT WILL BE IMPLEMENTED IN ACCORDANCE WITH SECTION 219 OF THE STANDARD SPECIFICATIONS AND SDP 55-00

THE DEVELOPMENT PLAN IS APPROVED FOR SOIL EROSION AND SEDIMENT CONTROL BY THE HOWARD SOIL CONSERVATION DISTRICT.

APPROVED: *John R. Plutan* 4/6/95
HOWARD SOIL CONSERVATION DISTRICT DATE

REVIEWED FOR HOWARD SOIL CONSERVATION DISTRICT AND METS TECHNICAL REQUIREMENTS.

APPROVED: *Patricia Engler* 4/6/95
U.S. SOIL CONSERVATION SERVICE DATE

DEPARTMENT OF PUBLIC WORKS
HOWARD COUNTY, MARYLAND
James A. Slum 4/6/95
DIRECTOR OF PUBLIC WORKS DATE
Paul J. Seaman 4/7/95
CHIEF BUREAU OF ENGINEERING DATE

GEORGE WILLIAM STEPHENS, JR. AND ASSOCIATES, INC.
CIVIL ENGINEERS & LAND SURVEYORS
658 KENILWORTH DRIVE, SUITE 100
TOWSON, MARYLAND 21284
(410) 825-8120

J. J. Miller

DESIGNED: PRC / RAM
DRAFTED: RAM
CHECKED: PRC

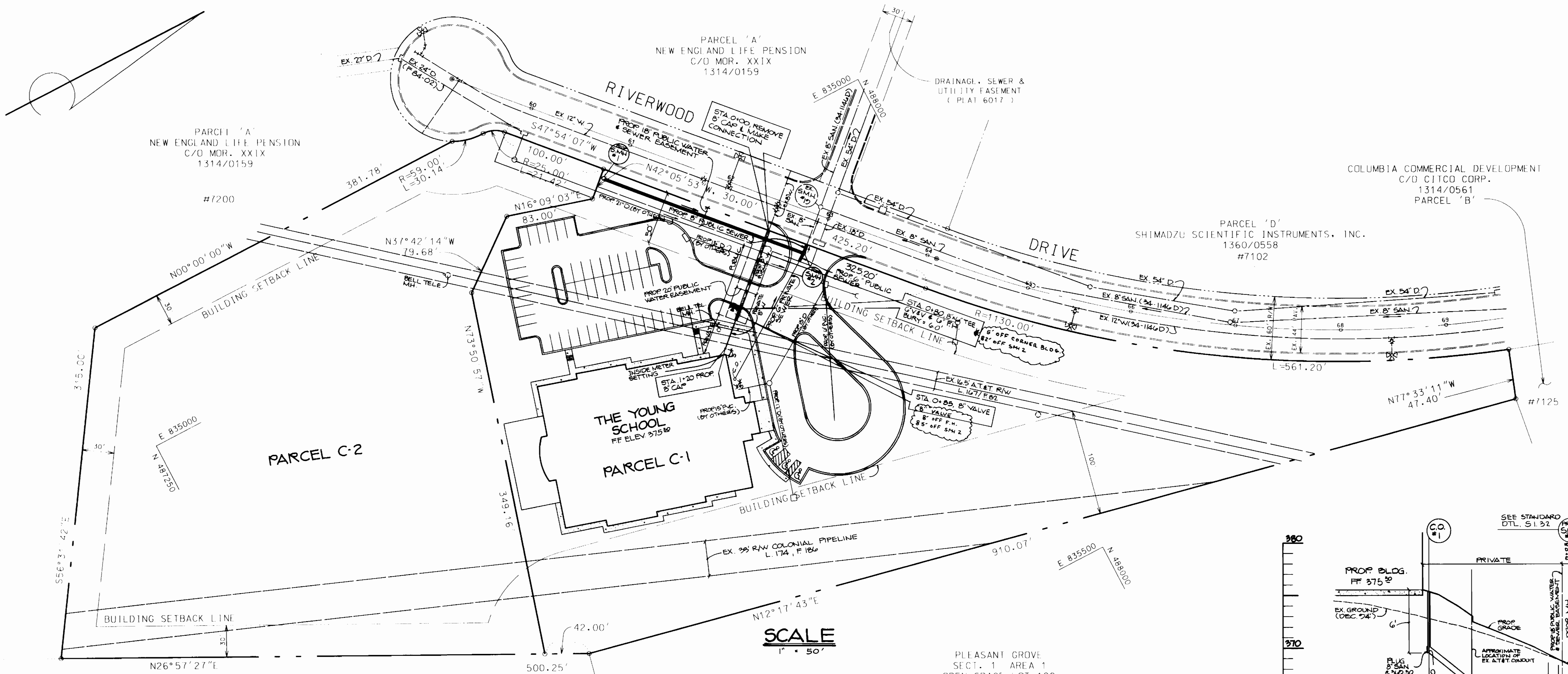
GENERAL NOTES & LOCATION MAP FOR PUBLIC SEWER AND WATER MAINS
CONTRACT NO. 94-3418-D
600 SCALE MAP NO. 41 BLOCK NO. 7

BY NO.	REVISION	DATE

RIVERS CORPORATE PARK
PARCEL 'C-1'
THE YOUNG SCHOOL
HOWARD COUNTY, MARYLAND
ELECTION DISTRICT *G
FEBRUARY 14, 1995
SHEET 1 OF 2

3418 ws/1 Rivers Corp. PK. Par. C-1

3418 WS/2 Rivers Corp. PK., par. C-1



SCALE
1" = 50'

LOT 1
COLUMBIA ASSOC., INC.
2427/0450

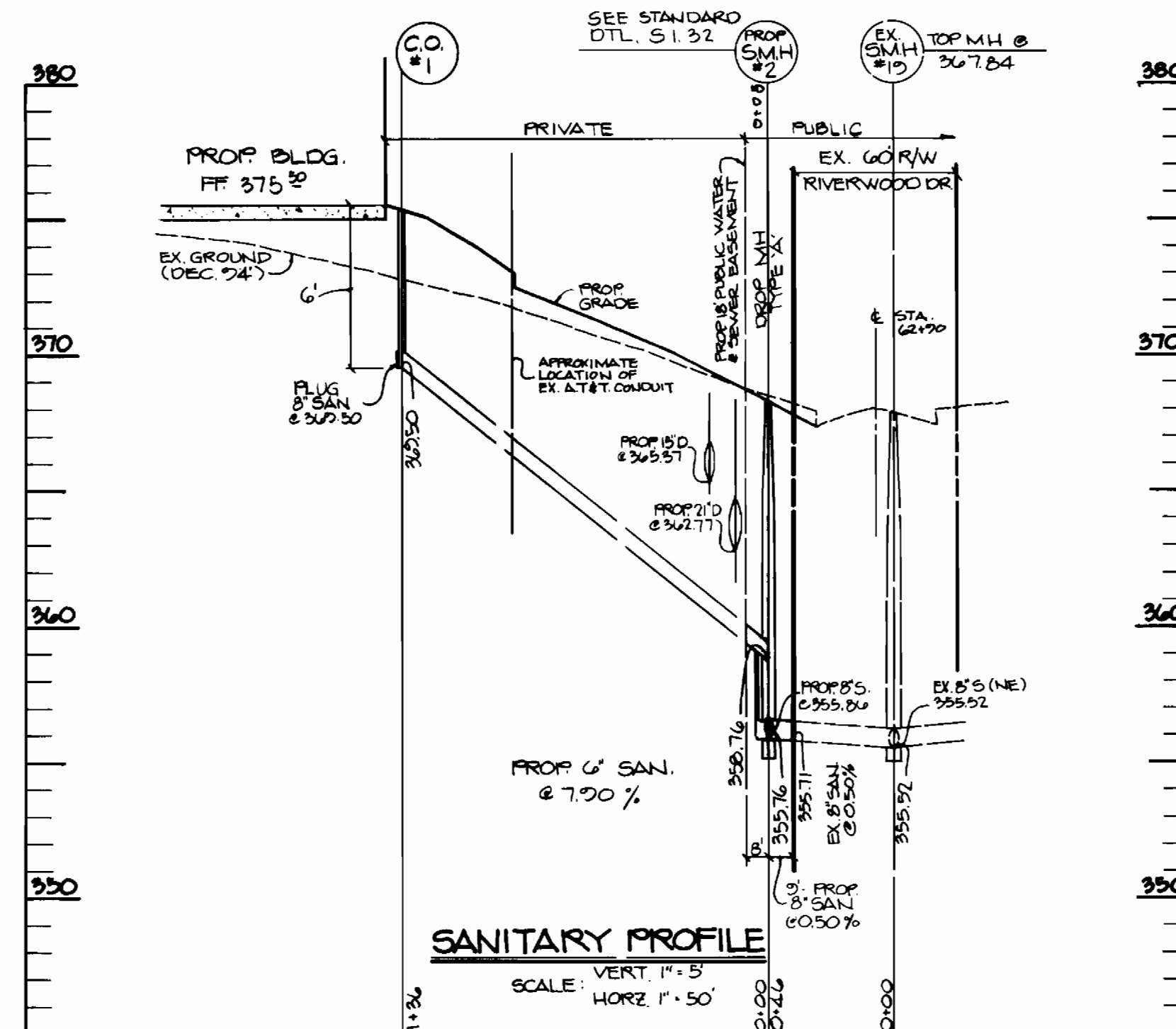
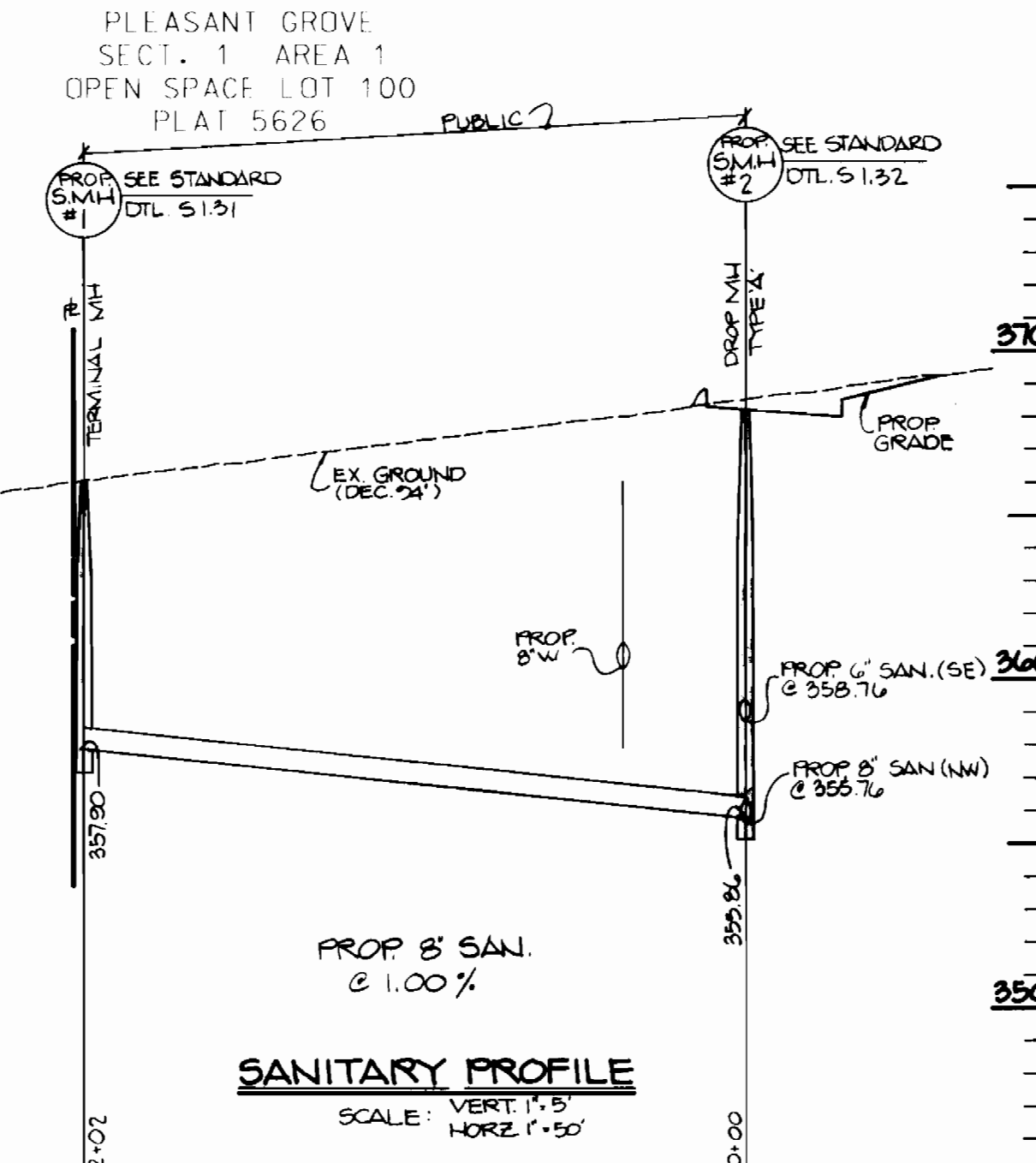
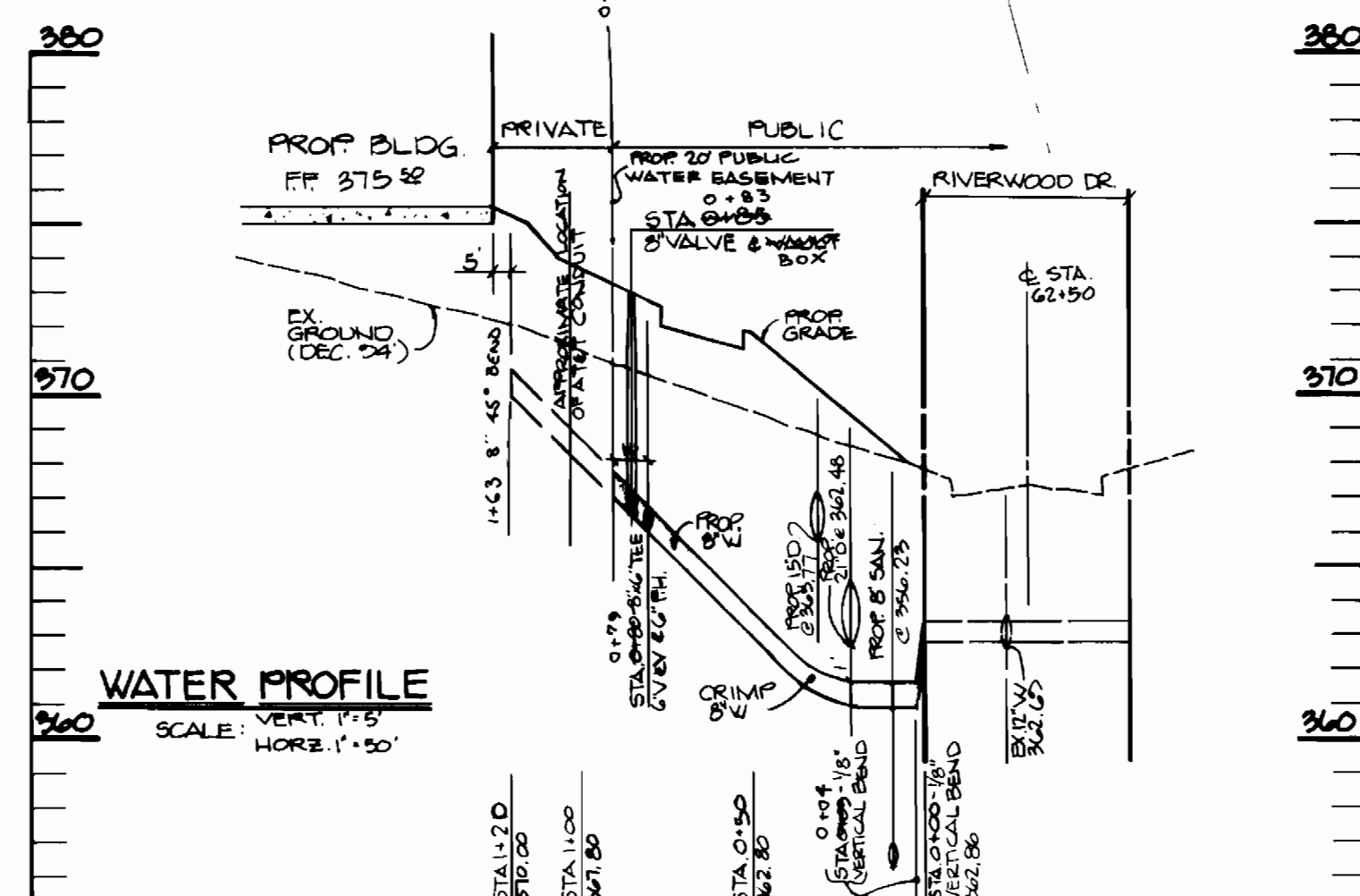
SEDIMENT CONTROL MEASURES FOR THIS CONTRACT WILL BE IMPLEMENTED IN ACCORDANCE WITH SECTION 219 OF THE STANDARD SPECIFICATIONS AND SDP 05-60

THE DEVELOPMENT PLAN IS APPROVED FOR SOIL EROSION AND SEDIMENT CONTROL BY THE HOWARD SOIL CONSERVATION DISTRICT.

APPROVED: *John R. Robertson* 4/6/95
HOWARD SOIL CONSERVATION DISTRICT DATE

REVIEWED FOR HOWARD SOIL CONSERVATION DISTRICT AND METS TECHNICAL REQUIREMENTS.

APPROVED: *Patricia Engle* 4/6/95
U.S. SOIL CONSERVATION SERVICE DATE



BY	NO.	REVISION	DATE

DEPARTMENT OF PUBLIC WORKS
HOWARD COUNTY, MARYLAND
James A. Khan 4-6-95
DIRECTOR OF PUBLIC WORKS DATE
Patricia Engle 4/7/95
CHIEF BUREAU OF ENGINEERING DATE

GEORGE WILLIAM STEPHENS, JR.
AND ASSOCIATES, INC.
CIVIL ENGINEERS & LAND SURVEYORS
658 KENILWORTH DRIVE, SUITE 100
TOWSON, MARYLAND 21204
(410) 875-8120

DESIGNED: RAM
DRAFTED: JMS / RAM
CHECKED: PRC

PLAN AND PROFILE
FOR PUBLIC
SEWER AND WATER MAIN
CONTRACT NO. 34-3418-D
600 SCALE MAP NO. 41 BLOCK NO. 7

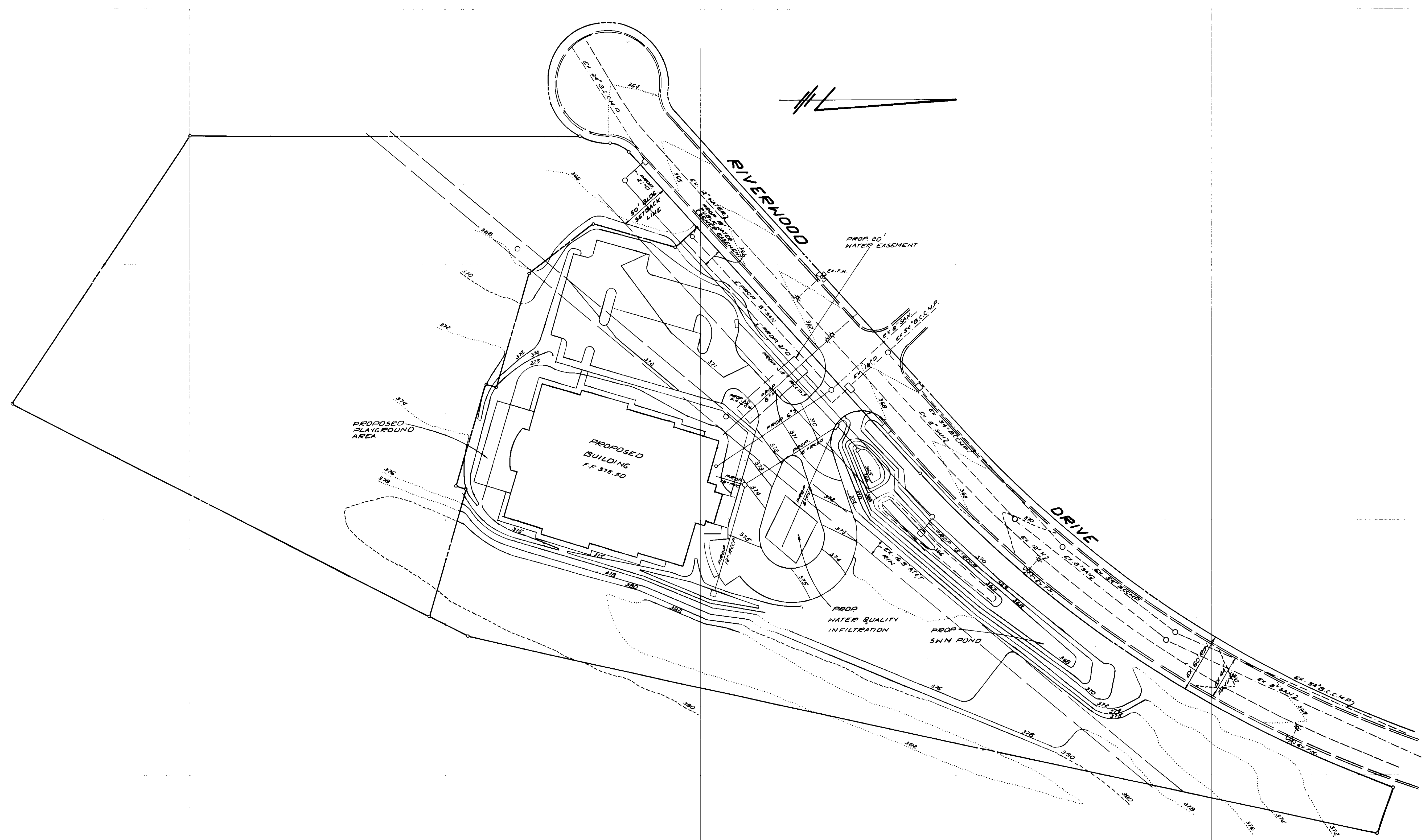
RIVERS CORPORATE PARK
PARCEL 'C-1'
THE YOUNG SCHOOL
HOWARD COUNTY, MARYLAND
ELECTION DISTRICT #6
FEBRUARY 14, 1995
SHEET 2 OF 2
PN. 7843

3418 POS. SHT. # 1 of 1

E 834750

N 467000

TOPOGRAPHIC SURVEY PLAT



LEGEND

- PROPOSED DRIVE
- PROPOSED EASEMENT
- PROPOSED LOT
- PROPOSED DRIVE

SUBD NAME: RIVERS CORPORATE PARK
 PARCEL C-1'
 SEC 1 AREA 2
 STREET NAME: RIVERWOOD DR.
 CAP. PROJ. NO.
 CONTRACT NO. 34-3418-D
 FIELD BOOK NO.
 SCALE: 1" = 50'

PREPARED BY:

GEORGE W. STEPHENS, JR.
 & ASSOCIATES, INC.
 658 KENILWORTH DR. STE 100
 TOWSON, MARYLAND 21284
 (410) 825-8120

E 835750

N 467000

NO.	REVISION	DATE	NO.	REVISION	DATE
1			8		
2			7		
3			6		
4			5		
5			4		
6			3		
7			2		
8			1		