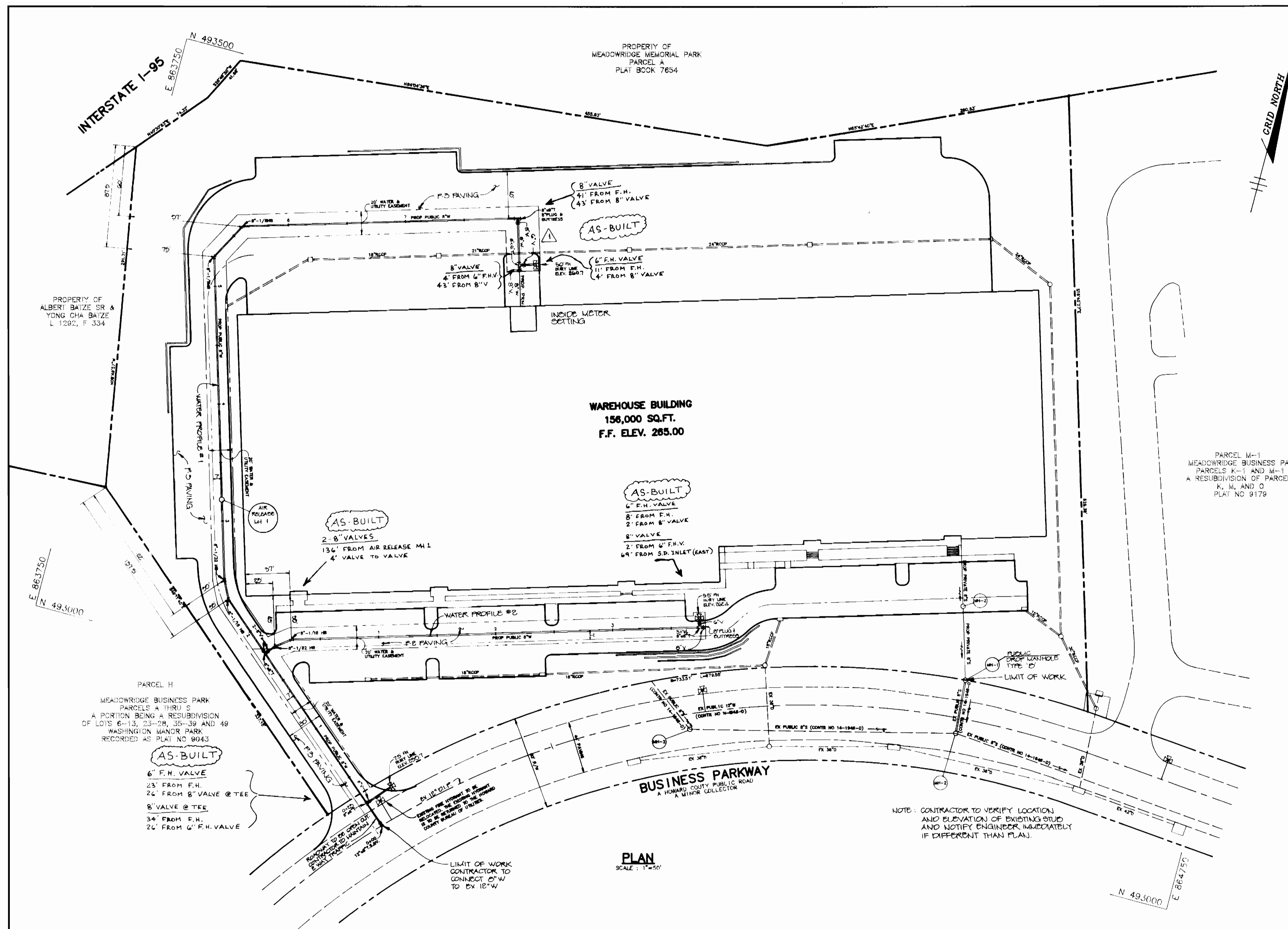


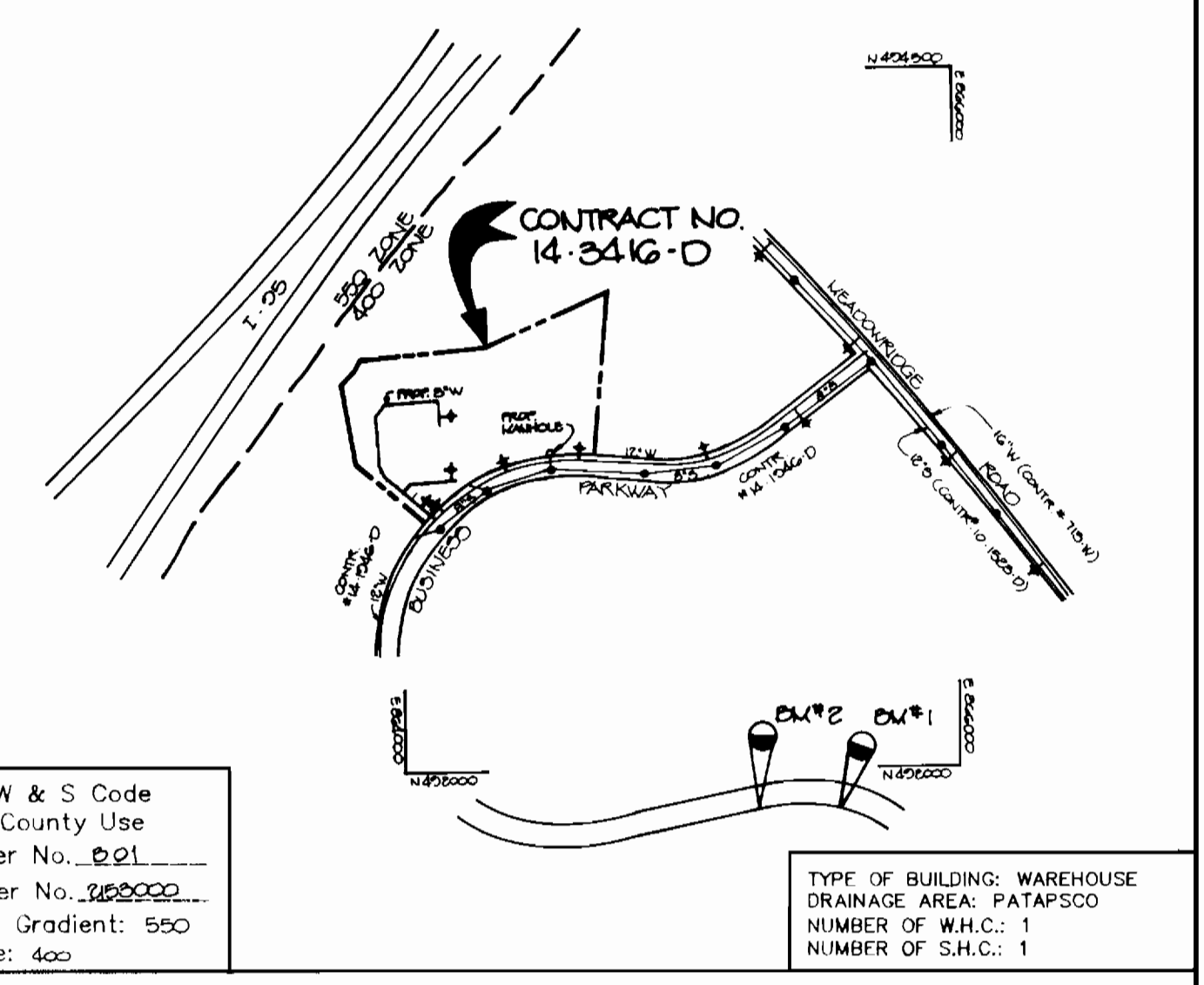
AS-BUILT 2-1-96

3416 WS/1 MEADOWRIDGE BUSINESS PK.



**BENCH MARKS**

BLM#1	ELEV. 201.25	N. 401,705.75	E. 825,207	PK. NAIL IN CURB
BLM#2	ELEV. 195.65	N. 401,800.83	E. 825,271.74	PK. NAIL IN CURB



**VICINITY MAP**  
SCALE: 1"=600'

**GENERAL NOTES**

- Approximate location of existing mains are shown. The contractor shall take all necessary precautions to protect existing mains and services and maintain uninterrupted supply. Any damage incurred shall be repaired immediately to the satisfaction of the Engineer at the Contractor's expense.
- All horizontal controls are based on Maryland State Coordinates.
- All vertical controls are based on U.S.C.S. data.
- All pipe elevations shown are invert elevations.
- Clear all utilities by a minimum of 6". Clear all poles by 2'-0" minimum or tunnel as required. The owner has contacted the utility companies and has made arrangements for bracing of poles as shown on the drawings. In the event the contractor's work requires the bracing of additional poles, any cost incurred by the owner for bracing of additional poles or damages shall be deducted from money owed the contractor. The contractor shall coordinate with the utility companies to schedule the bracing of the poles.
- For details not shown on the drawings, and for materials and construction methods use Howard County Design Manual, Volume IV, Standard Specifications and Detail for Construction. (Latest Edition). The contractor shall have a copy of Volume IV on the job.
- Where test pits have been made on existing utilities, they are noted by the symbol at the location of the test pit. A note or notes containing the results of the test pit or pits is included on the drawings. Existing utilities in the vicinity of the proposed work for which test pits have not been dug shall be located by the contractor two weeks in advance of construction operations at his own expense.
- Contractor shall notify the following utility companies or agencies at least five working days before starting work shown on these plans:
 

State Highway Administration	531-5533
Baltimore Gas & Electric Co. Contractor Services	850-4620
Baltimore Gas & Electric Co. Underground Damage Control	787-9068
Miss Utility	1-800-257-7777
Colonial Pipeline Co.	795-1390
Bureau of Utilities, Howard County Department of Public Works	313-4900
- Trees and shrubs are to be protected from damage to maximum extent. Trees and shrubs located within the construction strip are not to be removed or damaged by the contractor.
- Contractor shall remove trees, stumps and roots along line of excavation. Payment for such removal shall be included in the unit price bid for construction of the main.
- All water mains to be D.I.P. Class 52 unless otherwise noted.
- Tops of all water mains to have a minimum of 3'-1/2" cover unless otherwise noted.
- Valves adjacent to tees shall be strapped to tees.
- All fittings shall be buttressed or anchored with concrete in accordance with the Standard Details unless otherwise provided for on the drawings.
- Fire hydrants shall be set to the bury line elevations shown on the drawings. All fire hydrants shall be restrained and buttressed with concrete in accordance with Standard Details. Soil around the fire hydrant shall be compacted in accordance with Section 1000 and 1005 of the Standard Specifications.
- The contractor shall not operate any water main valves on the existing water system.
- All water house connections shall be for inside meter setting unless otherwise noted on plans or in specifications.
- All sewer mains shall be DIP, RCP, VOPX, CSPX, RDCP and P.V.C. unless otherwise noted.
- All manholes shall be 4'-0" inside diameter unless otherwise noted.
- Force mains shall be D.I.P. only.
- Manholes shown with 12" and 16" walls are for brick manholes only.
- Manholes designated W.T. in plan and profile shall have watertight frame and covers, Standard Detail 05.52. Where watertight manhole frame and cover is used, set top of frame 1'-6" above finished grade unless otherwise noted on the drawings.
- House(s) with the symbol "C.N.S." indicates that cellar cannot be served.
- Manholes can be either brick or precast concrete structures.
- Contractor is solely responsible for construction means, methods, techniques, sequences, procedures, and safety precautions and programs.
- Fire hydrants will be located 1' FROM BACK OF CURB unless otherwise noted.

NOTE: CONTRACTOR TO VERIFY LOCATION AND ELEVATION OF EXISTING STUB AND NOTIFY ENGINEER IMMEDIATELY IF DIFFERENT THAN PLAN.

**PLAN**  
SCALE: 1"=50'

QUANTITIES				
ITEMS	QUANTITIES ESTIMATED	AS-BUILT		
		QUANTITIES	TYPE	MANUFACTURER / SUPPLIER
Sediment control measures for this contract will be implemented in accordance with Section 219 of the Specifications and as shown on S.O.P. 05.05	8" WATER 1223 LF 6" WATER 38 LF	1217 LF 42 LF	CL 52 DIP CL 52 DIP	ATLANTIC STATES/ WATERPRO
Review for Howard Soil Conservation District and meets technical requirements.	FIRE HYDRANTS 3 EA. 12"x8" T.S.&V. 1 EA.	3 EA. 1 EA.	3 848 MT TAP SLEEVE	AMERICAN FLOW/ WATERPRO MUELLER/ WATERPRO
<i>Patricia English</i> 4/6/95 NATURAL RESOURCES CONSERVATION SERVICE DATE	8" VALVES 3 EA. 6" VALVES 3 EA. 40" CA. SEWER MANHOLE 1 EA. AIR RELEASE MANHOLE 1 EA.	4 EA. 3 EA. 1 EA. 1 EA.	RES. SEAT GATE RES. SEAT GATE PRECAST PRECAST	MUELLER/ WATERPRO ATLANTIC PRECAST ATLANTIC PRECAST
NAME OF UTILITY CONTRACTOR: C.J. MILLER				
This plan is approved for soil erosion and sediment control by the Howard Soil Conservation District.		CHECKBOX		
<i>John R. Robertson</i> 4/6/95 HOWARD SOIL CONSERVATION DISTRICT DATE		AS-BUILT DATE		
DEPARTMENT OF PUBLIC WORKS HOWARD COUNTY, MARYLAND		SURVEY AND DRAFTING DIVISION		

DEPARTMENT OF PUBLIC WORKS  
HOWARD COUNTY, MARYLAND

*James A. Shaw* 4/2/95  
DIRECTOR OF PUBLIC WORKS DATE

*Paul S. Spear* 4/12/95  
CHIEF, BUREAU OF ENGINEERING DATE

*Robert S. Spear* 4/6/95  
CHIEF, BUREAU OF UTILITIES DATE

*John P. Dammann* 4/12/95  
CHIEF, LAND DEVELOPMENT DATE

**RIEMER MUEGGE & ASSOCIATES, INC.**  
Planners • Engineers • Surveyors  
8818 Centre Park Drive • Suite 200 • Columbia, MD 21045  
410-997-8900 FAX: 410-997-9282

*Arthur E. Wudjge* #0107

DES: OAK			
DRN: DAM			
CHK: CJR			
DATE: 3-11-95	R.J.C.	NO.	REVISION
	BY	NO.	REVISION

**TITLE SHEET**

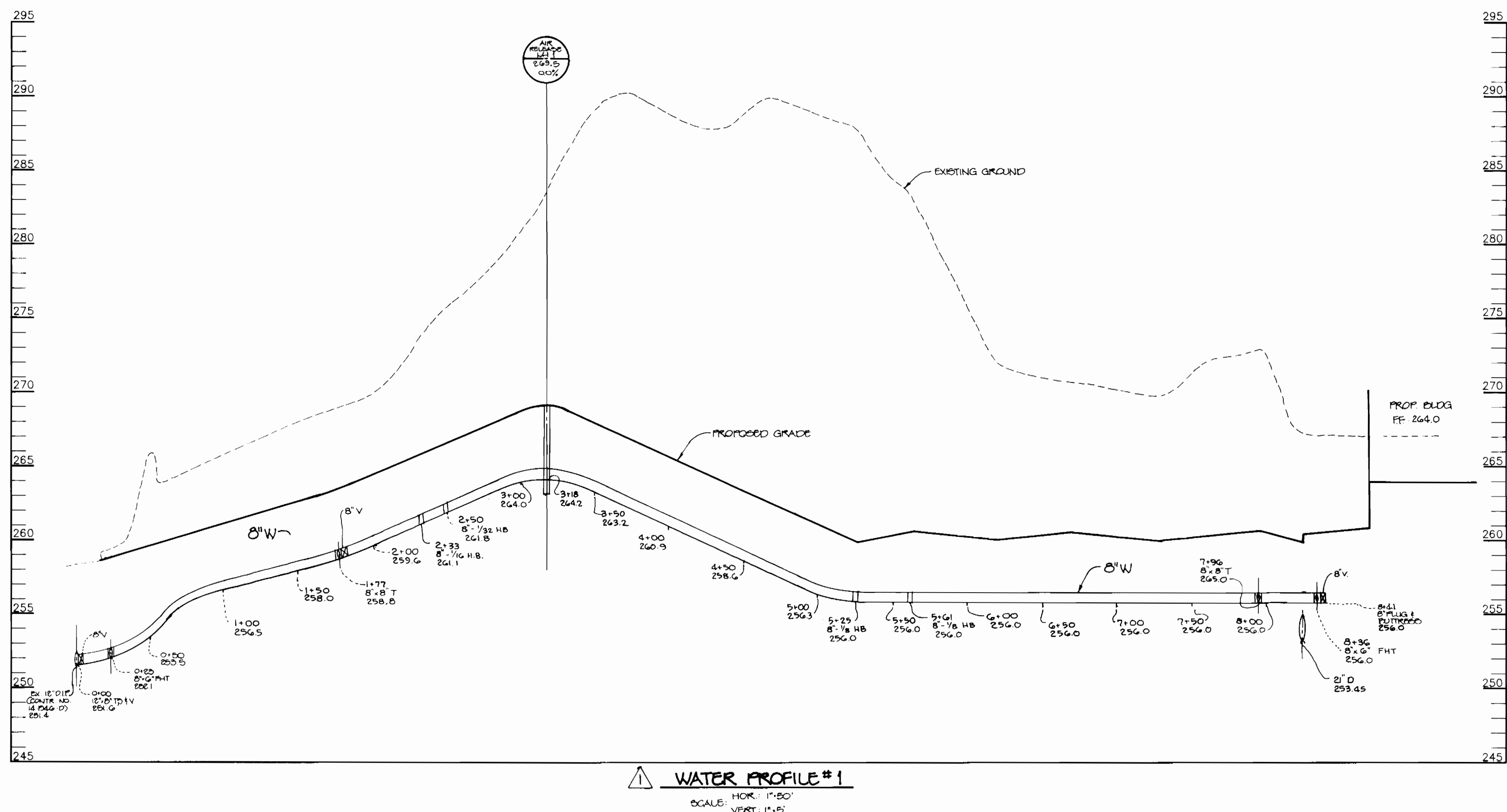
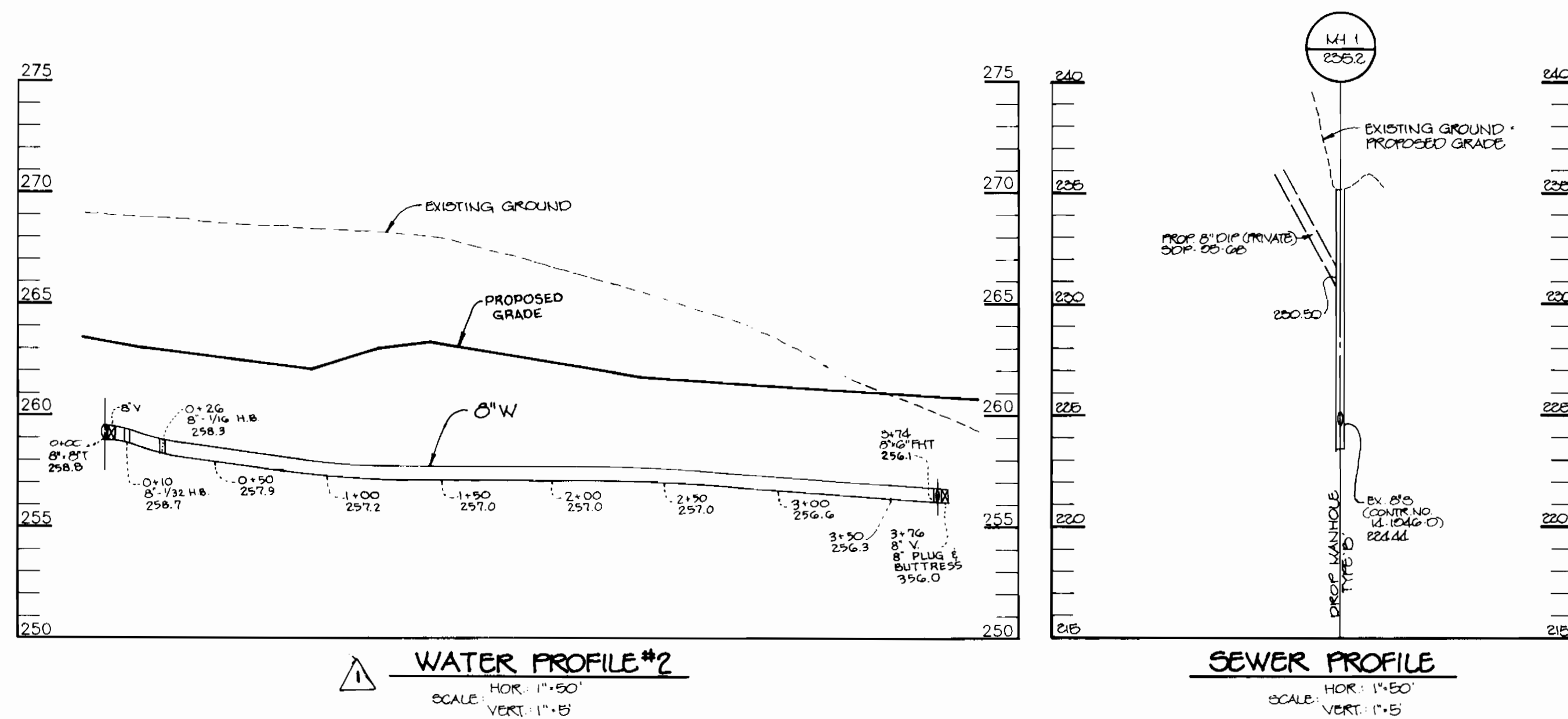
REVISED WATER TO BLDG'S CONNECTION LOCATION  
REVISED QUANTITY OF G. VALVES

DATE: 3/26/95

**MEADOWRIDGE BUSINESS PARK**  
PARCEL K-2  
1st ELECTION DISTRICT  
HOWARD COUNTY, MARYLAND  
CONTRACT NO. 14-3416-D

SCALE: AS SHOWN  
SHEET 1 OF 2

3A16 ws/2 MEADOWRIDGE BUSINESS PK.



DEPARTMENT OF PUBLIC WORKS  
 HOWARD COUNTY, MARYLAND

Director of Public Works: *Robert D. ...* 4/13/95  
 Chief, Bureau of Utilities: *Robert D. ...* 4/12/95

RIEMER MUEGGE & ASSOCIATES, INC.  
 Planners • Engineers • Surveyors  
 8818 Centre Park Drive • Suite 200 • Columbia, MD 21045  
 410-997-8900 FAX: 410-997-9282

ARTHUR D. MUEGGE #5107

DES: DAM			
DRN: DAM			
CHK: CJR			
DATE: 5-17-95			
BY: NO.	REVISION	DATE	

PROFILES OF WATER AND SEWER MAINS

ADJUSTED WATER PROFILES TO REVISED SITE GRADES 9/26/95

600' SCALE MAP NO. 57 BLOCK NO. 22

MEADOWRIDGE BUSINESS PARK  
 PARCEL K-2  
 1st ELECTION DISTRICT  
 HOWARD COUNTY, MARYLAND  
 CONTRACT NO. 14-3416-D

SCALE AS SHOWN  
 SHEET 2 OF 2