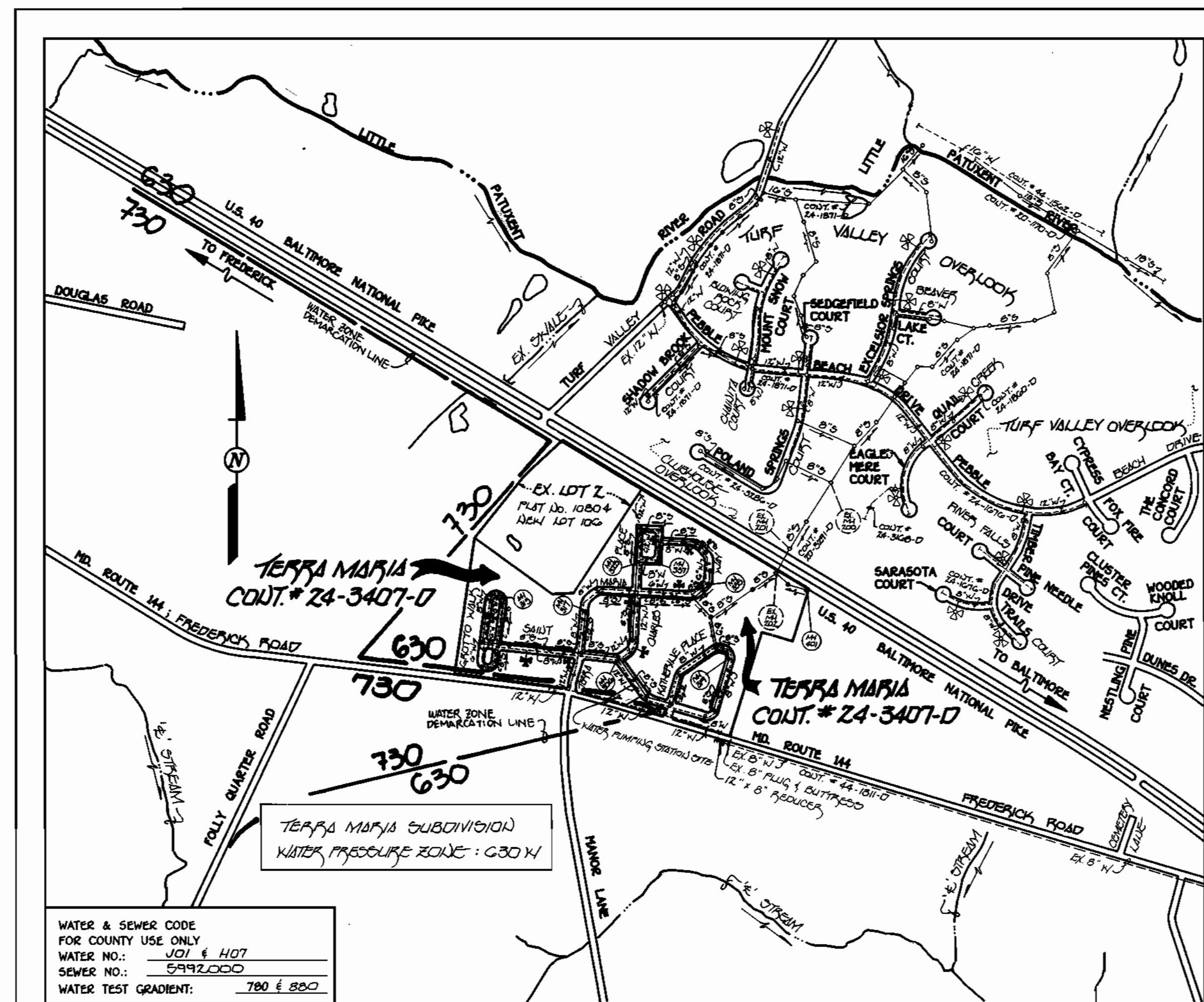


3407 ws/1 Terra Maria, lots 3-118

QUANTITIES				
ITEM	ESTIMATED	AS-BUILT		
		QUANTITIES	TYPE	SUPPLIER
8" SEWER	4,815 LF	5,090 LF	DR 35	J-M MFG.
8" SEWER, DIT	1,540 LF	1,658 LF	CL 52	GRIFFIN
6" SEWER	32 LF	30 LF	DR 35	J-M MFG.
4" SEWER	2,721 LF	2,830 LF	DR 35	"
MANHOLES	39 EACH	39 EA	PRECAST	ATLANTIC
12" WATER	3,452 LF	3,281 LF	CL 52	GRIFFIN
8" WATER	3,740 LF	4,081 LF	"	"
6" WATER	794 LF	717 LF	"	"
4" WATER	32 LF	31 LF	"	"
1" NHC	903 LF	1,072 LF	TYPE "K"	CEBEO
3/4" NHC	15 EACH	12 EA	AWWA C502-85	MUELLER
1 1/2" NHC	224 LF	253 LF	TYPE "K"	CEBEO
5" SURFACE LINE	207 LF	207 LF	CL 52	GRIFFIN
OUTSIDE METER, MISC	1 EACH	1 EA	PRECAST	FOED
12" VALVE	14 EACH	14 EA	GATE OR	MUELLER
8" VALVE	14 EACH	14 EA	GATE OR	"
6" VALVE	15 EACH	14 EA	"	"
4" VALVE	2 EACH	2 "	"	"
12" x 12" CROSS	2 EACH	"	M. J.	GRIFFIN
12" x 8" CROSS	1 EACH	"	"	"
12" x 12" WYCO	1 EACH	"	"	"
12" x 12" TEES	7 EACH	7 "	"	"
12" x 8" TEES	1 EACH	1 "	"	"
12" x 4" TEES	4 EACH	4 "	"	"
12" x 8" TEES	1 EACH	1 "	"	"
8" x 8" TEES	2 EACH	2 "	"	"
8" x 6" TEES	9 EACH	9 "	"	"
8" x 4" TEES	1 EACH	1 "	"	"
12" x 8" REDUCERS	6 EACH	6 "	"	"
8" x 6" REDUCERS	2 EACH	2 "	"	"
4" x 5" REDUCERS	1 EACH	1 "	"	"
12" x 10" BENDS	3 EACH	3 "	"	"
12" x 1/2" BENDS	6 EACH	6 "	"	"
12" x 1/2" BENDS	1 EACH	1 "	"	"
8" x 1/2" BENDS	25 EACH	25 "	"	"
8" x 1/2" BENDS	4 EACH	4 "	"	"
12" PLUGS	6 EACH	6 "	"	"
8" PLUGS	1 EACH	1 "	"	"
6" PLUGS	1 EACH	1 EA.	"	"
4" PLUGS	1 EACH	"	"	"
5" DIA. OFF ASSEMBLY	1 EACH	"	"	KUPERLE FOUNDRY



VICINITY MAP
SCALE: 1"=600'

WATER & SEWER CODE FOR COUNTY USE ONLY
WATER NO.: J01 & H07
SEWER NO.: 599Z000
WATER TEST GRADIENT: 780 & 880

TYPE OF BUILDING: RESIDENTIAL, SINGLE FAMILY DETACHED
NUMBER OF LOTS: 116 LOTS (15 PARCELS) (107 BUILT)
NO. OF WATER HOUSE CONNECTIONS: 100
NO. OF SEWER HOUSE CONNECTIONS: 100
DRAINAGE AREA: LITTLE PATUXENT
TREATMENT PLANT: PATAPSCO WASTEWATER TREATMENT PLANT; VIA ROUTE 100 PUMPING STATION

PLAN REFERENCE NUMBERS:
P-94-24
F-95-99

GENERAL NOTES

- APPROXIMATE LOCATION OF EXISTING MAINS ARE SHOWN. THE CONTRACTOR SHALL TAKE ALL NECESSARY PRECAUTIONS TO PROTECT EXISTING MAINS AND SERVICES AND MAINTAIN UNINTERRUPTED SUPPLY. ANY DAMAGE INCURRED SHALL BE REPAIRED IMMEDIATELY TO THE SATISFACTION OF THE ENGINEER AT THE CONTRACTOR'S EXPENSE.
- ALL HORIZONTAL CONTROLS ARE BASED ON MARYLAND STATE COORDINATES.
- ALL VERTICAL CONTROLS ARE BASED ON U.S.G.S. DATUM.
- ALL PIPE ELEVATIONS ARE INVERT ELEVATIONS.
- CLEAR ALL UTILITIES BY A MINIMUM OF 6". CLEAR ALL POLES BY 2'-0" MINIMUM.
- FOR DETAILS NOT SHOWN ON THE DRAWINGS, AND FOR MATERIALS AND CONSTRUCTION METHODS, USE HOWARD COUNTY DESIGN MANUAL, VOLUME IV, STANDARD SPECIFICATIONS AND DETAILS FOR CONSTRUCTION (1991 AMENDMENTS) THE CONTRACTOR SHALL HAVE A COPY OF VOLUME IV ON THE JOB SITE.
- WHERE TEST PITS HAVE BEEN MADE ON EXISTING UTILITIES, THEY ARE NOTED BY THE SYMBOL AT THE LOCATION OF THE TEST PIT. A NOTE OR NOTES CONTAINING THE RESULTS OF THE TEST PIT OR PITS IS INCLUDED ON THE DRAWINGS. EXISTING UTILITIES IN THE VICINITY OF THE PROPOSED WORK FOR WHICH TEST PITS HAVE NOT BEEN DUG SHALL BE VERIFIED BY THE CONTRACTOR TO HIS OWN SATISFACTION. ANY DAMAGE TO EXISTING FACILITIES DUE TO THE CONTRACTOR'S NEGLIGENCE SHALL BE REPAIRED AT THE CONTRACTOR'S EXPENSE.
- CONTRACTOR SHALL NOTIFY THE FOLLOWING UTILITIES OR AGENCIES AT LEAST FIVE WORKING DAYS BEFORE STARTING WORK SHOWN ON THESE PLANS:
STATE HIGHWAY ADMINISTRATION - 531-5533
BALTIMORE GAS & ELECTRIC CO. - CONTRACTOR SERVICES - 850-4620
BALTIMORE GAS & ELECTRIC CO. - UNDER GROUND DAMAGE CONTROL - 787-9068
MISS UTILITY - 1-800-257-7777
COLONIAL PIPELINE CO. - 795-1390
BUREAU OF UTILITIES, HOWARD COUNTY DEPARTMENT OF PUBLIC WORKS - 313-4900
- TREES AND SHRUBS ARE TO BE PROTECTED FROM DAMAGE TO MAXIMUM EXTENT. TREES AND SHRUBS LOCATED WITHIN THE CONSTRUCTION STRIP ARE NOT TO BE REMOVED OR DAMAGED BY THE CONTRACTOR.
- CONTRACTOR SHALL REMOVE TREES, STUMPS AND ROOTS ALONG THE LINE OF EXCAVATION. PAYMENT FOR SUCH REMOVAL SHALL BE INCLUDED IN THE UNIT PRICE BID FOR CONSTRUCTION OF THE MAIN.
- ALL SEWER MAINS SHALL BE D.I.P. OF P.V.C. UNLESS OTHERWISE NOTED.
- ALL MANHOLES SHALL BE 4'-0" INSIDE DIAMETER UNLESS OTHERWISE NOTED.
- T.B. DENOTES TEST BORING.
- MANHOLES SHOWN WITH 12" AND 18" WALLS ARE FOR BRICK MANHOLES ONLY.
- MANHOLES DESIGNATED W.T. IN PLAN AND PROFILE SHALL HAVE WATERTIGHT FRAME AND COVERS, STANDARD DETAIL G 5.52.
- WHERE WATERTIGHT MANHOLE FRAME AND COVER IS USED, SET TOP OF FRAME 1'-6" ABOVE FINISHED GRADE UNLESS OTHERWISE NOTED ON THE PLANS OR IN THE SPECIFICATIONS.
- HOUSE(S) WITH THE SYMBOL "C.N.S." INDICATES THAT THE CELLAR CANNOT BE SERVED.
- ALL WATER HOUSE CONNECTIONS SHALL BE FOR INSIDE METER SETTING, UNLESS OTHERWISE NOTED ON THE PLANS OR IN THE SPECIFICATIONS.
- MANHOLES LOCATED WITHIN THE PROPOSED ROADWAY SHALL HAVE STANDARD HEAVY TRAFFIC MANHOLE FRAMES AND COVERS, STANDARD DETAIL G5.51.
- WATER MAINS AND WATER HOUSE CONNECTION LINES MUST BE PLACED AS TO HAVE ONE (1) FOOT SEPARATION FROM THE SEWER MAIN OR SEWER HOUSE CONNECTION AS THEY PASS ABOUT IT.
- ALL WATER MAINS SHALL BE D.I.P., CLASS 52 UNLESS OTHERWISE NOTED.
- TOPS OF ALL WATER MAINS TO HAVE A MINIMUM OF 3'-1/2" COVER UNLESS OTHERWISE NOTED.
- VALVES ADJACENT TO TEES SHALL BE STRAPPED TO TEES.
- ALL FITTINGS SHALL BE BUTTRESSED OR ANCHORED WITH CONCRETE IN ACCORDANCE WITH THE STANDARD DETAILS UNLESS OTHERWISE PROVIDED FOR ON THE DRAWINGS.
- FIRE HYDRANTS SHALL BE SET TO THE BURY LINE ELEVATION SHOWN ON THE DRAWINGS. ALL FIRE HYDRANTS SHALL BE RESTRAINED AND BUTTRESSED WITH CONCRETE IN ACCORDANCE WITH THE STANDARD DETAILS (W1.11 AND W2.13). SOIL AROUND THE FIRE HYDRANT SHALL BE COMPACTED IN ACCORDANCE WITH SECTION 1000 AND 1005 OF THE STANDARD SPECIFICATIONS.
- THE CONTRACTOR SHALL NOT OPERATE ANY WATER MAIN VALVES ON THE EXISTING WATER SYSTEM.
- ALL D.I.P. FITTINGS SHALL BE IN ACCORDANCE WITH AWWA SPECIFICATIONS C-153; DUCTILE IRON COMPACT FITTINGS, 3-INCH THROUGH 12-INCH FOR WATER AND OTHER LIQUIDS.
- THE CONTRACTOR SHALL NOTIFY THE BUREAU OF HIGHWAYS, HOWARD COUNTY, @ (410) 313-2450 AT LEAST FIVE WORKING DAYS BEFORE ANY OPEN CUT OF ANY COUNTY ROAD OR BORING/JACKING OPERATION IN COUNTY ROADS FOR LAYING WATER/SEWER MAINS OR HOUSE CONNECTIONS. THE APPROVAL OF THESE DRAWINGS WILL CONSTITUTE COMPLIANCE WITH DPW REQUIREMENTS PER SECTION 18.114(a) OF THE HOWARD COUNTY CODE.
- THE CONTRACTOR SHALL NOTE THAT DUE TO THE INVERT ELEVATIONS OF PORTIONS OF THE PROPOSED WATER MAINS, CERTAIN LOTS AS DELETED ON THE PLANS SHALL HAVE INDIVIDUAL 1" WATER HOUSE CONNECTIONS (3/4" METERS). CERTAIN LOTS, ALSO AS DELETED ON THE PLANS, SHALL HAVE TRAIL 1/2" WATER HOUSE CONNECTIONS (1" NHC) AFTER THEY BRANCH, 3/4" METERS).

CONTRACT No. 24-3407-D
TERRA MARIA
LOT NOS. 3-118
WATER AND SEWER MAIN EXTENSIONS
HOWARD COUNTY, MARYLAND
DEPARTMENT OF PUBLIC WORKS

REVIEWED FOR HOWARD COUNTY SOIL CONSERVATION DISTRICT AND METRO TECHNICAL REQUIREMENTS:
Patricia Galt 8/30/95
HOWARD COUNTY SOIL CONSERVATION SERVICE DATE

THIS DEVELOPMENT IS APPROVED FOR EROSION AND SEDIMENT CONTROL BY HOWARD SOIL CONSERVATION DISTRICT.
APPROVED:
John Robertson 8/30/95
HOWARD SOIL CONSERVATION DISTRICT DATE

SEDIMENT CONTROL MEASURES FOR THIS CONTRACT WILL BE IMPLEMENTED IN ACCORDANCE WITH SECTION 219 OF THE HOWARD COUNTY DESIGN MANUAL & STANDARDS AND SPECIFICATIONS FOR SOIL EROSION AND SEDIMENT CONTROL IN DEVELOPING AREAS AS SHOWN ON THESE PLANS AND P90-99.

DEPARTMENT OF PUBLIC WORKS
BUREAU OF ENGINEERING
HOWARD COUNTY, MARYLAND
Paul D. Brown 8/31/95
CHIEF, BUREAU OF ENGINEERING DATE

DEPARTMENT OF PUBLIC WORKS
HOWARD COUNTY, MARYLAND
Robert Jensen 8-28-95
CHIEF, BUREAU OF UTILITIES DATE

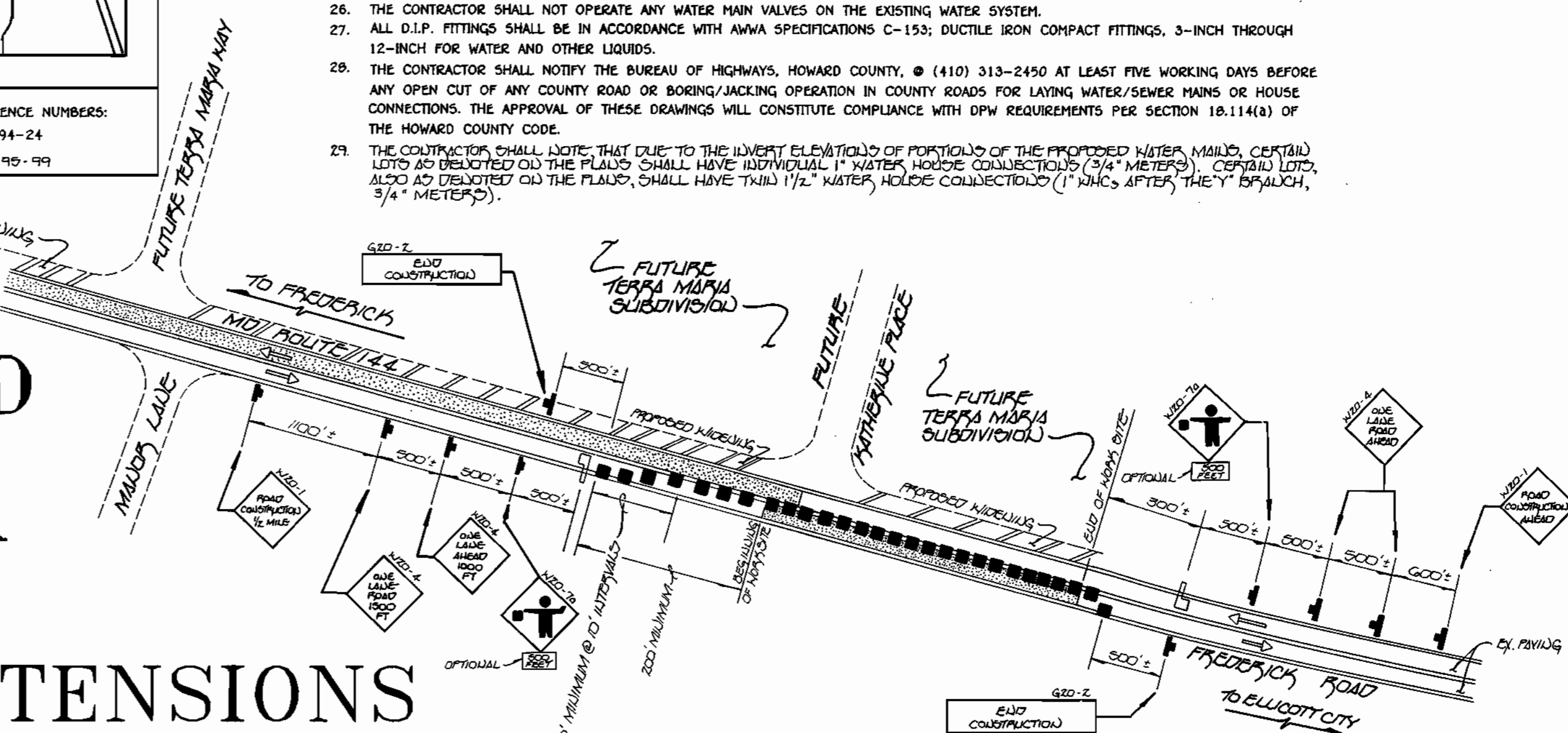
DEPARTMENT OF PLANNING & ZONING
HOWARD COUNTY, MARYLAND
John D. Brown 8/1/95
CHIEF, DEVELOPMENT ENGINEERING DIVISION DATE

Fisher, Collins & Carter, Inc.
CIVIL ENGINEERING CONSULTANTS & LAND SURVEYORS
Suite 100, 9171 Baltimore National Pike
Ellicott City, Maryland 21042
(410) 461-2855
Terrell A. Fisher

DES: M.J.M.	BY: NO.	REVISION	DATE
DRWN: B.J.W./J.M.M.			
CHK: P.W.K.			
DATE: 4/5/95			

TITLE SHEET
600' SCALE MAP NO. 16 BLOCK NO. 23

TERRA MARIA
LOT NOS. 3-118
CONTRACT NO. 24-3407-D
SECOND ELECTION DISTRICT
HOWARD COUNTY, MARYLAND
SCALE AS SHOWN
SHEET 1 OF 8



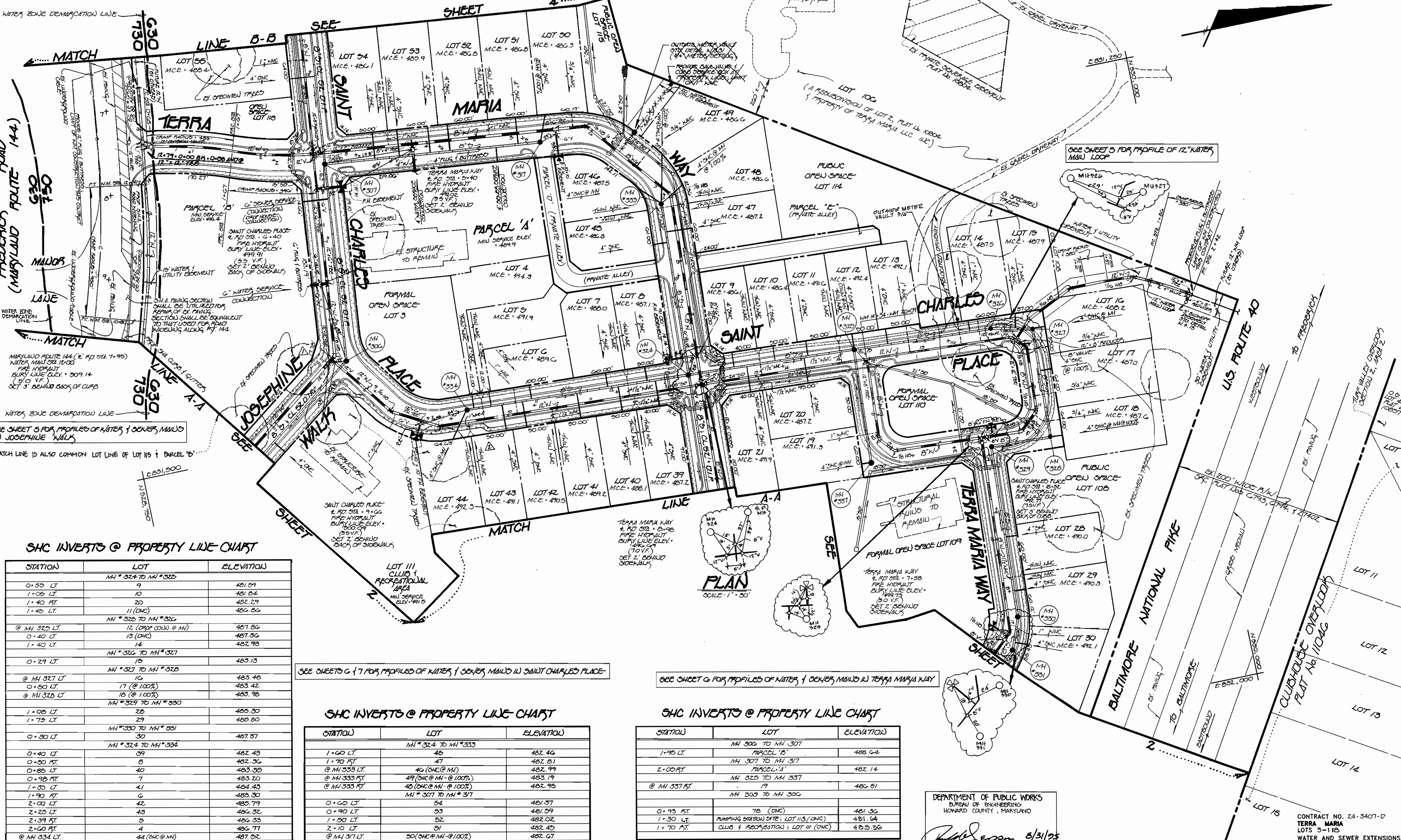
KEY:

- MANHOLE
- VALVE
- FLAG

TRAFFIC CONTROL PLAN NOTES:
 1. THE OPTIONAL NOTES INCLUDED WITHIN THE SHALL WORK, SOLE TRAFFIC CONTROL (MISC) STANDARDS ARE MADE A PART OF THIS TRAFFIC CONTROL PLAN.
 2. ALL SIGNS, DEVICES, ETC. SHALL BE IN ACCORDANCE WITH THE MANUAL ON UNIFORM TRAFFIC CONTROL DEVICES (MUTCD).
 CONTRACT NO. 24-3407-D
TERRA MARIA
LOT NOS. 3-118
WATER AND SEWER MAIN EXTENSIONS
HOWARD COUNTY, MARYLAND

3407 WS/3 Terra Maria

SEE SHEET B FOR PROFILE OF 12" WATER MAIN ALONG FREDERICK ROAD



SHC INVERTS @ PROPERTY LINE-CHART

STATION	LOT	ELEVATION
0+55 LT	9	481.59
1+08 LT	10	481.84
1+40 FT	20	482.29
1+45 LT	11 (DNC)	486.06
@ MH 325 LT	12 (DNC) @ MH	487.86
0+40 LT	13 (DNC)	487.36
1+40 LT	14	482.98
0+29 LT	15	483.13
@ MH 327 LT	16	483.46
0+50 LT	17 (@ 100%)	483.42
@ MH 328 LT	18 (@ 100%)	483.98
1+08 LT	28	485.30
1+75 LT	29	485.80
0+30 LT	30	487.87
0+40 LT	39	482.43
0+50 FT	8	482.36
0+85 LT	40	483.30
0+98 FT	7	483.20
1+35 FT	41	484.43
1+90 FT	6	485.30
2+00 LT	42	485.79
2+25 LT	43	486.32
2+39 FT	5	486.33
2+60 FT	9	486.71
@ MH 334 LT	44 (DNC @ MH)	487.52

SEE SHEETS G & 7 FOR PROFILES OF WATER & SEWER MAINS IN SAINT CHARLES PLACE

SHC INVERTS @ PROPERTY LINE-CHART

STATION	LOT	ELEVATION
1+00 LT	45	482.46
1+70 FT	47	482.81
@ MH 333 LT	46 (DNC @ MH)	482.99
@ MH 333 FT	49 (DNC @ MH - @ 100%)	483.19
@ MH 333 FT	48 (DNC @ MH - @ 100%)	482.95
0+60 LT	54	481.37
0+90 LT	53	481.59
1+50 LT	52	482.02
2+10 LT	51	482.45
@ MH 317 LT	50 (DNC @ MH - @ 100%)	482.67

SEE SHEET G FOR PROFILES OF WATER & SEWER MAINS IN TERRA MARIA WAY

SHC INVERTS @ PROPERTY LINE-CHART

STATION	LOT	ELEVATION
1+95 LT	MH 305 TO MH 307	488.64
2+00 FT	PARCEL 'B'	482.14
@ MH 337 FT	PARCEL 'A'	486.51
0+95 FT	MH 305 TO MH 306	481.36
1+30 LT	78 (DNC)	481.64
1+70 FT	PUMPING STATION SITE: LOT 113 (DNC)	483.30
	CLUD & RECREATIONAL: LOT 111 (DNC)	

DEPARTMENT OF PUBLIC WORKS
HOWARD COUNTY, MARYLAND

Robert B. B...
CHIEF, BUREAU OF UTILITIES

DEPARTMENT OF PLANNING & ZONING
HOWARD COUNTY, MARYLAND

...
CHIEF, DEVELOPMENT ENGINEERING DIVISION

FISHER, COLLINS & CARTER, INC.
CIVIL ENGINEERING CONSULTANTS &
LAND SURVEYORS
SUITE 100, 9711 BALTIMORE NATIONAL PIKE
ELLCOTT CITY, MARYLAND 21042
(410) 461-2855

9757

TERRELL A. FISHER

DES: M.J.M.
DRWN: J.M.M./M.J.M.
CHK: P.W.K.
DATE: 4/5/95

BY	NO.	REVISION	DATE
FCC	1	REVISE LOCATION OF SIDEWALK; SAINT CHARLES PLACE	3/1/95
FCC	2	REVISE LOCATION OF SIDEWALK; JOSEPHINE WALKS	3/1/95

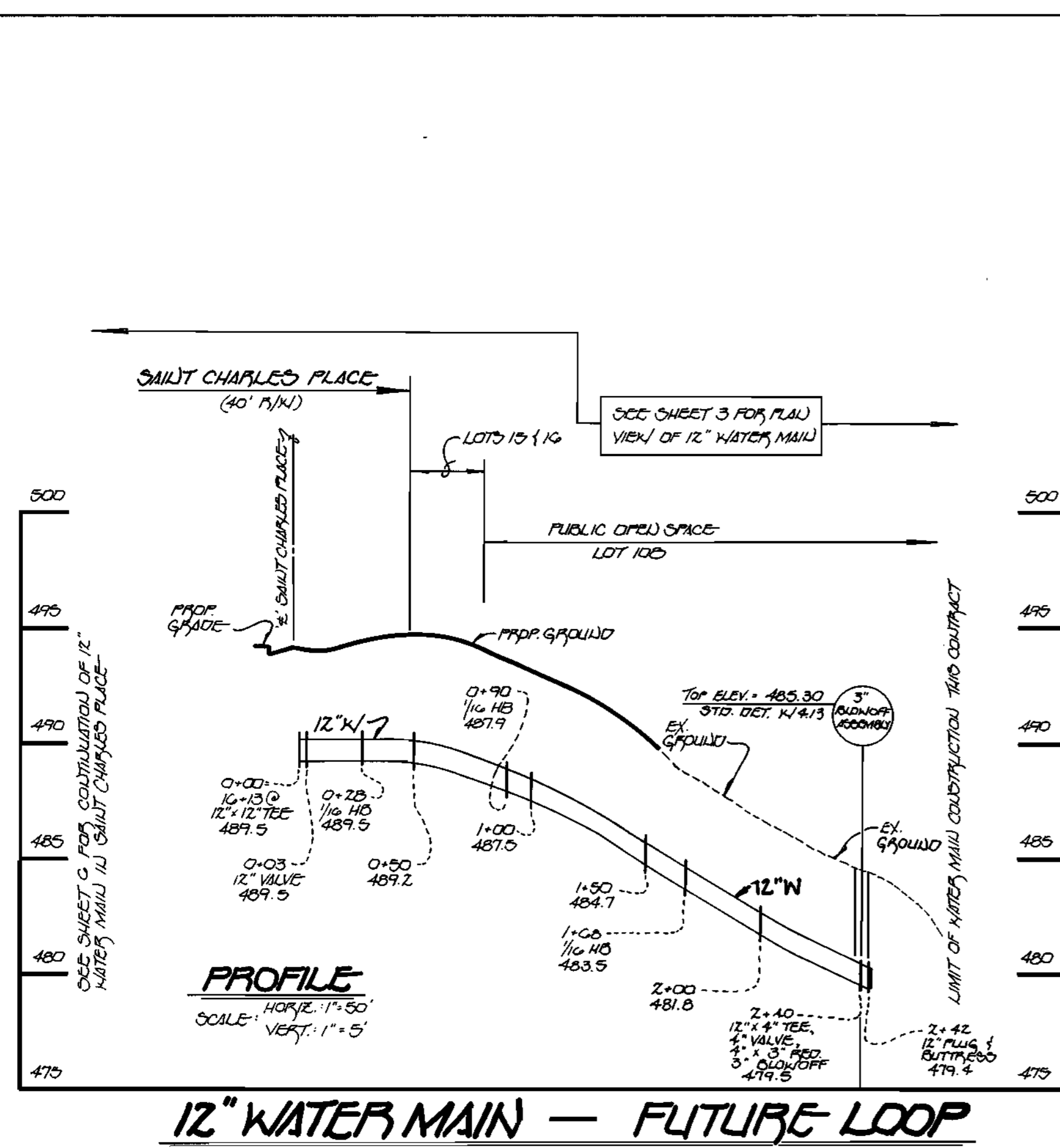
DEPARTMENT OF PUBLIC WORKS
BUREAU OF ENGINEERING
HOWARD COUNTY, MARYLAND

...
CHIEF, BUREAU OF ENGINEERING

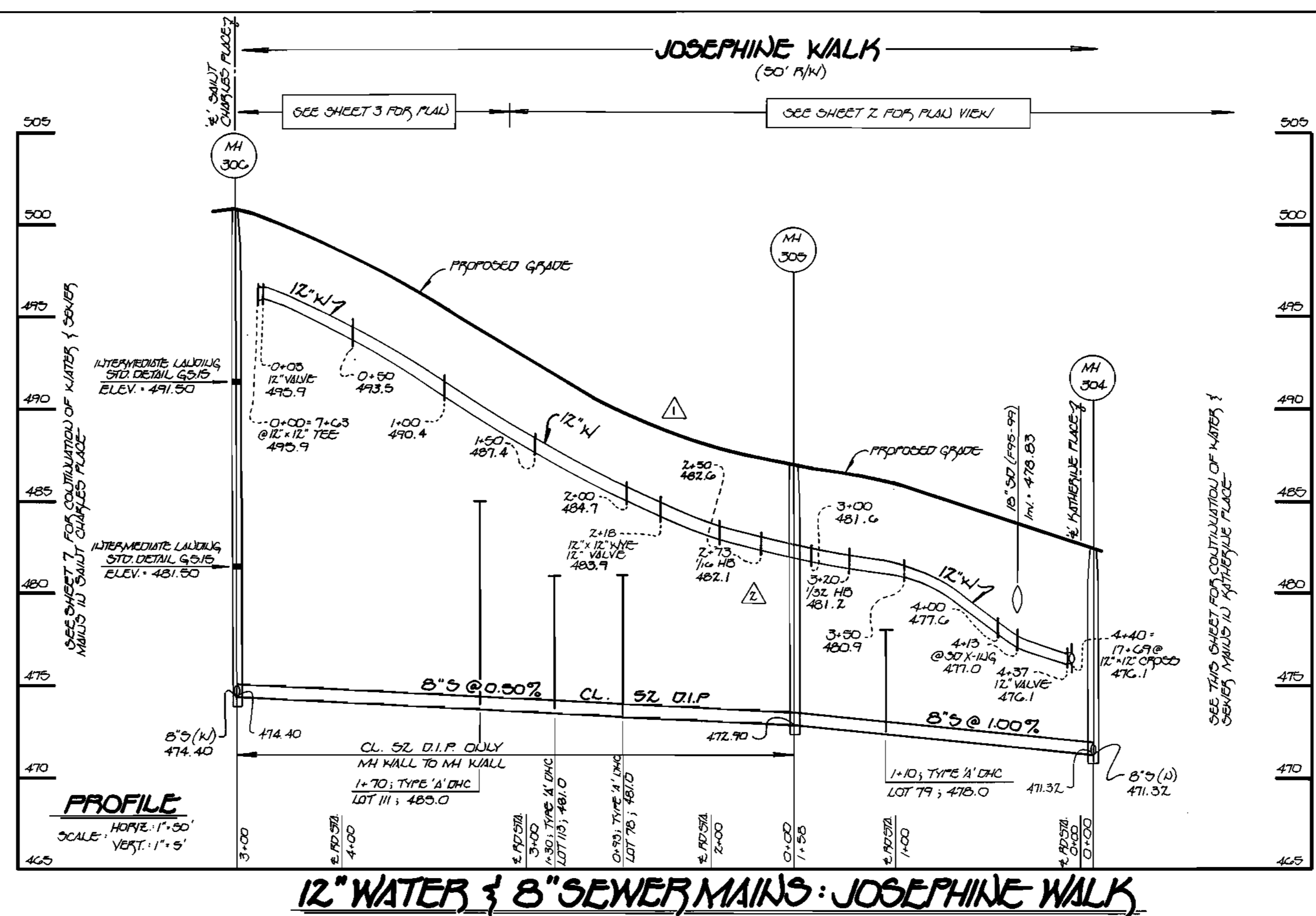
TERRA MARIA
LOTS 3-118
CONTRACT NO. 24-3407-D
SECOND ELECTION DISTRICT
HOWARD COUNTY, MARYLAND

SCALE AS SHOWN
SHEET 3 OF 8
TERRA.DWG

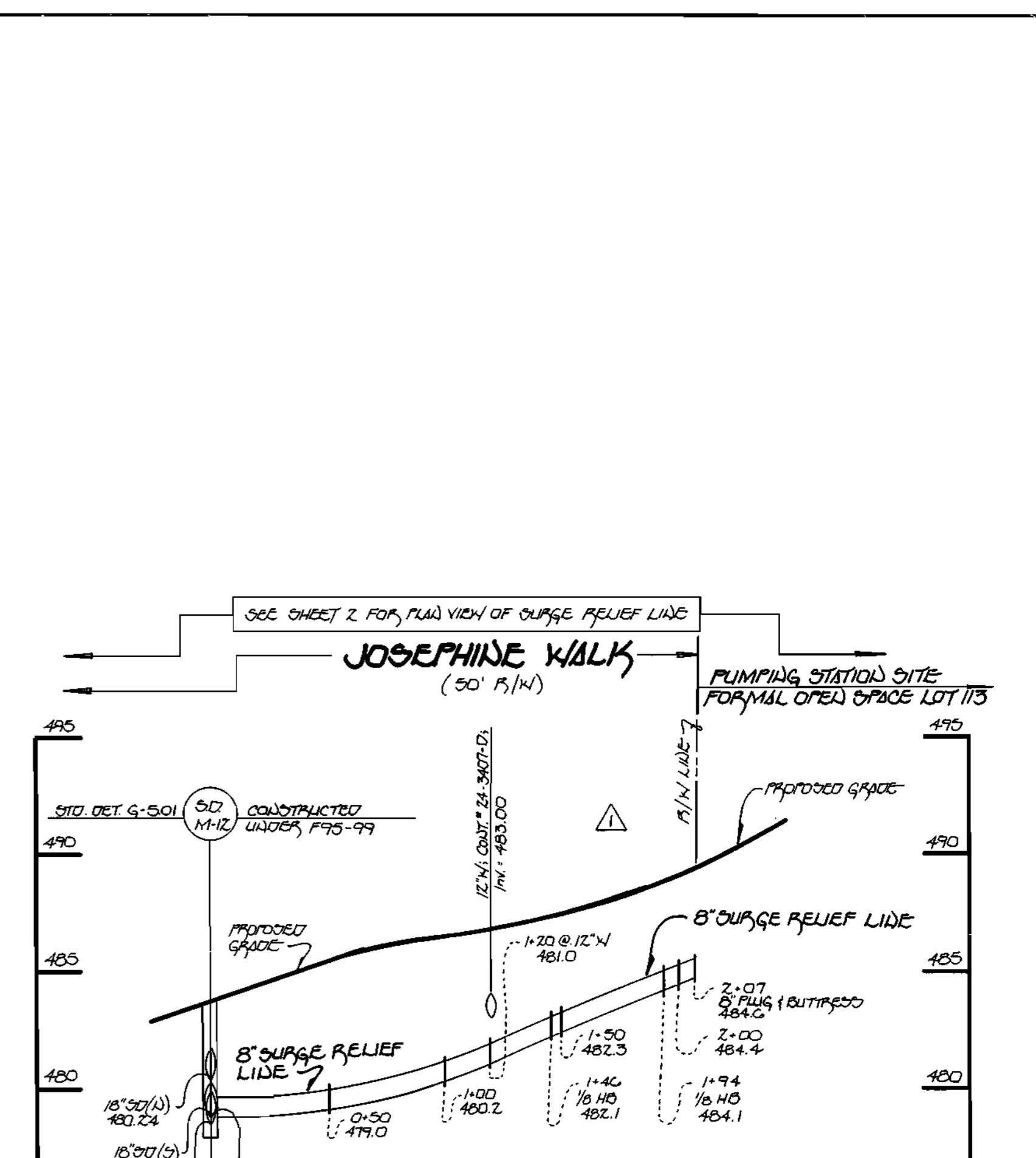
3407 ws/s Terra Maria



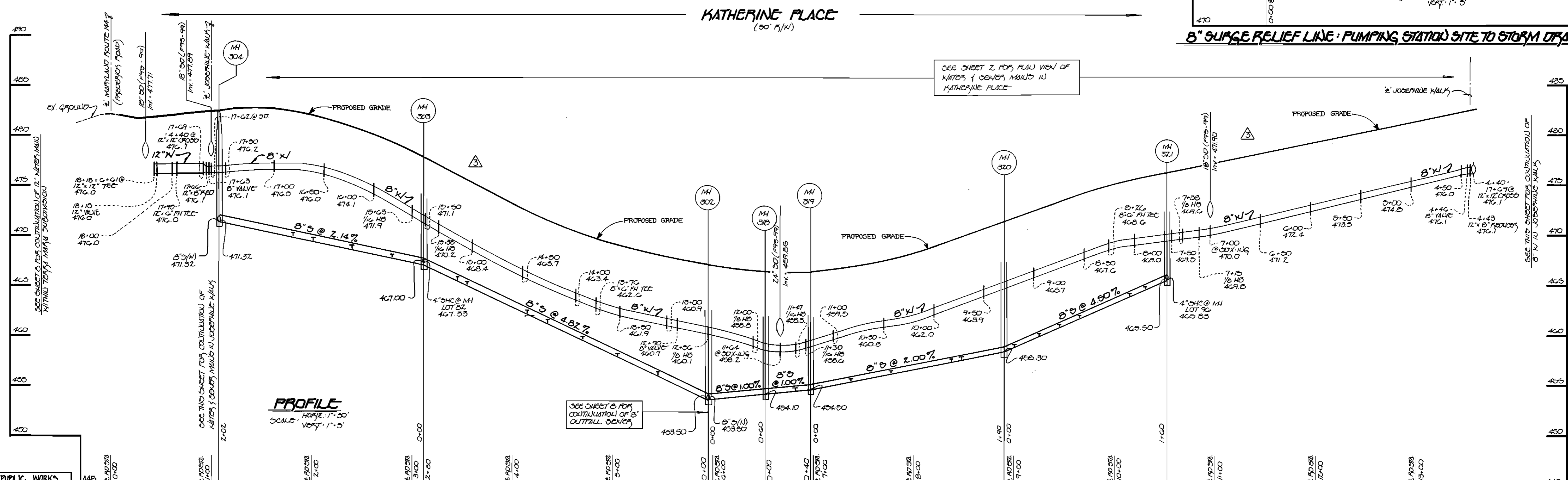
12" WATER MAIN - FUTURE LOOP



12" WATER & 8" SEWER MAINS: JOSEPHINE WALK



8" SURGE RELIEF LINE: PUMPING STATION SITE TO STORM DRAIN M-12



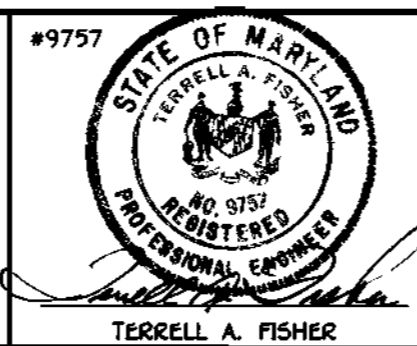
12" & 8" WATER & 8" SEWER MAINS: KATHERINE PLACE

DEPARTMENT OF PUBLIC WORKS
BUREAU OF ENGINEERING
HOWARD COUNTY, MARYLAND
Robert S. Biles
CHIEF, BUREAU OF ENGINEERING

DEPARTMENT OF PUBLIC WORKS
HOWARD COUNTY, MARYLAND
Robert S. Biles
CHIEF, BUREAU OF UTILITIES
8-28-95
DATE

DEPARTMENT OF PLANNING & ZONING
HOWARD COUNTY, MARYLAND
Michael J. ...
CHIEF, DEVELOPMENT ENGINEERING DIVISION
9/1/95
DATE

Fisher, Collins & Carter, Inc.
CIVIL ENGINEERING CONSULTANTS & LAND SURVEYORS
Suite 100, 9171 Baltimore National Pike
Ellicott City, Maryland 21042
(410) 481 - 2855



DES: J.M.M.				
DRWN: J.M.M.				
CHK: P.W.K.	FCC	REVISION	DATE	
	FCC	REVISION	DATE	
	FCC	REVISION	DATE	
DATE: 4/5/95				
BY NO.		REVISION	DATE	

WATER AND SEWER MAINS PROFILES
60' SCALE MAP NO. 16 BLOCK NO. 23

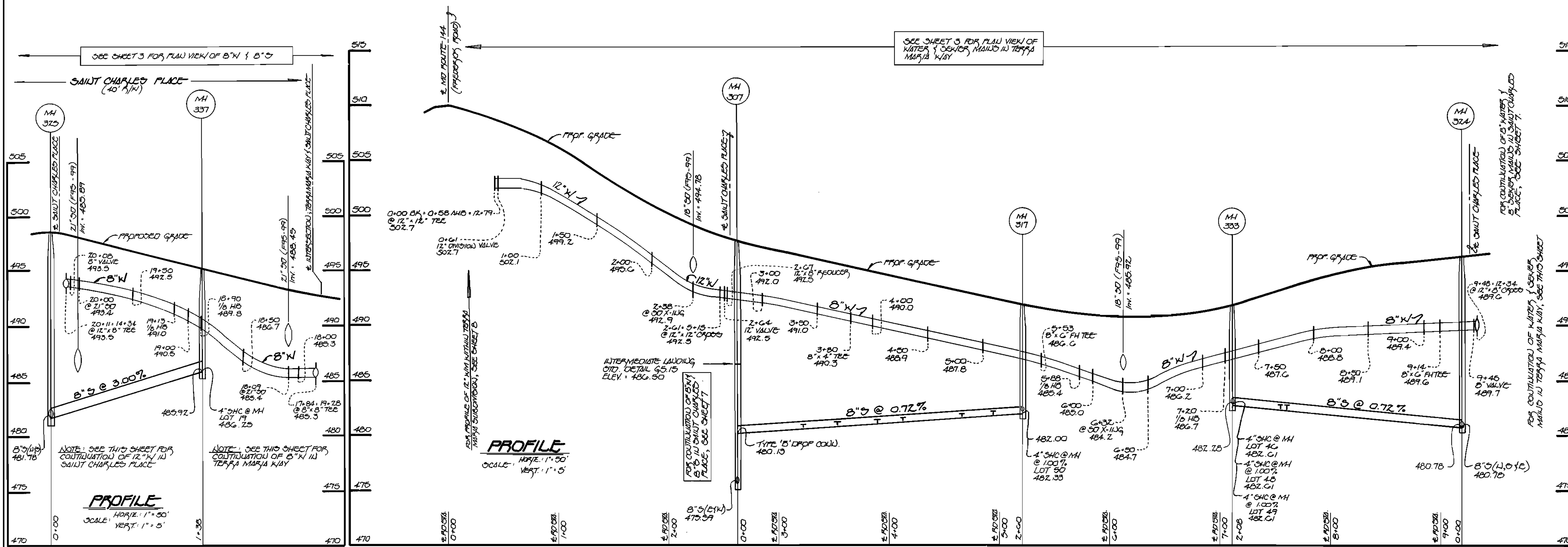
TERRA MARIA
LOT NOS. 3-118
CONTRACT NO. 24-3407-D
SECOND ELECTION DISTRICT
HOWARD COUNTY, MARYLAND

SCALE AS SHOWN
SHEET 5 OF 8
TERRA.DWG

CONTRACT NO. 24-3407-D
TERRA MARIA
LOT NOS. 3-118
WATER AND SEWER MAIN EXTENSIONS
HOWARD COUNTY, MARYLAND

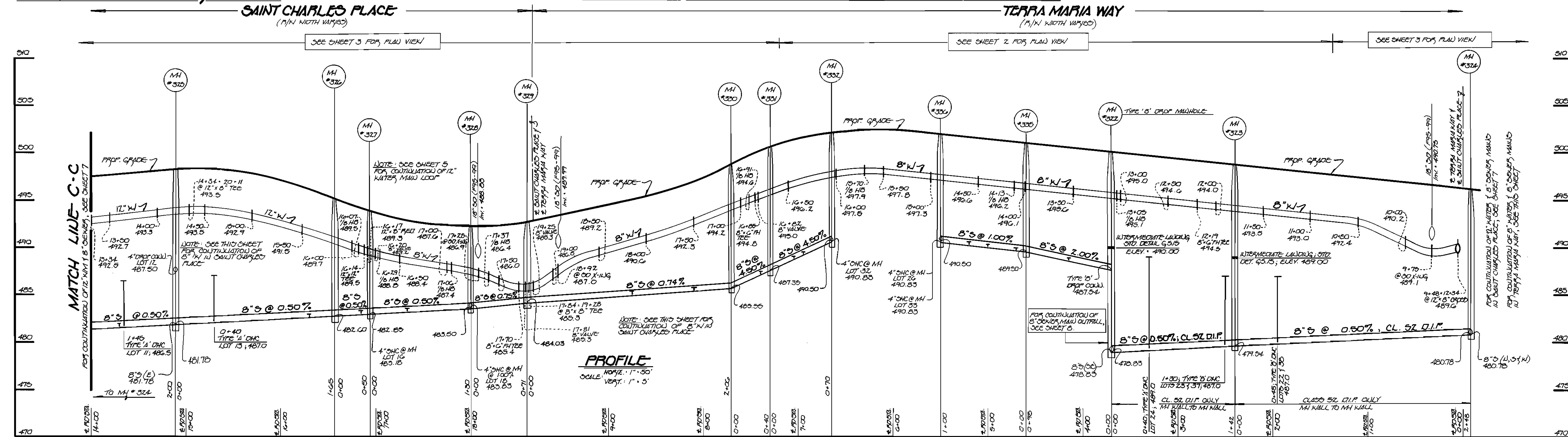
3407 w/s/6 Terra Maria

TERRA MARIA WAY
(50' R/W)



8" W & 8" S SAINT CHARLES PLACE

8" WATER & 8" SEWER MAINS: TERRA MARIA WAY

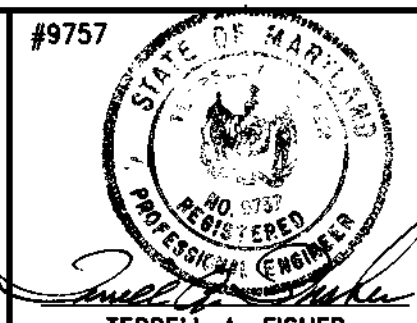


8" & 6" WATER & 8" SEWER MAINS: SAINT CHARLES PLACE & TERRA MARIA WAY

DEPARTMENT OF PUBLIC WORKS
BUREAU OF ENGINEERING
HOWARD COUNTY, MARYLAND
8/31/95
CHIEF, BUREAU OF ENGINEERING

DEPARTMENT OF PLANNING & ZONING
HOWARD COUNTY, MARYLAND
9/1/95
CHIEF, DEVELOPMENT ENGINEERING DIVISION

FISHER, COLLINS & CARTER, INC.
CIVIL ENGINEERING CONSULTANTS &
LAND SURVEYORS
SUITE 100, 9171 BALTIMORE NATIONAL PIKE
ELICOTT CITY, MARYLAND 21042
(410) 461-2855



DES:	M.J.M.				
DRWN:	J.M.M.				
CHK:	P.W.K.				
DATE:	4/5/95				
BY:		NO.		REVISION	

WATER & SEWER MAINS
PROFILES
600' SCALE MAP NO. 16 BLOCK NO. 23

TERRA MARIA
LOTS 3-118
CONTRACT NO. 24-3407-D
SECOND ELECTION DISTRICT
HOWARD COUNTY, MARYLAND

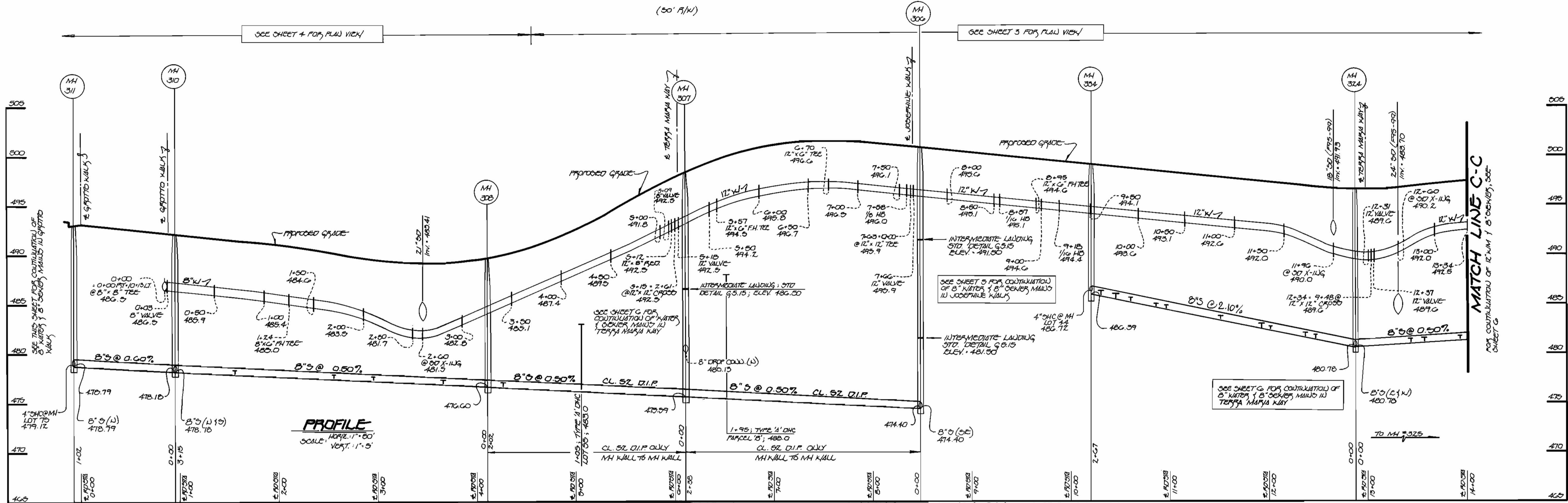
SCALE AS SHOWN
SHEET 6 OF 8

CONTRACT NO. 24-3407-D
TERRA MARIA
LOTS 3-118
WATER AND SEWER EXTENSIONS
HOWARD COUNTY, MARYLAND

3407 w/s 7 Terra Maria

SAINT CHARLES PLACE

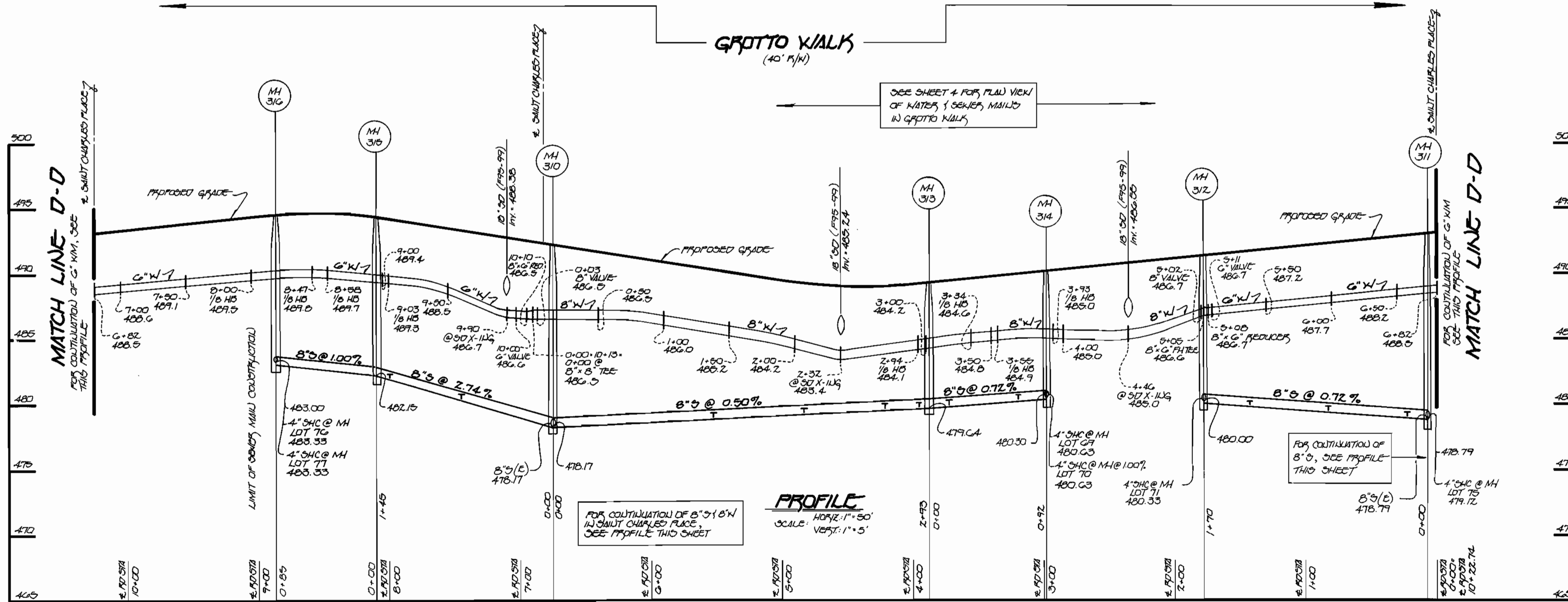
(50' P/W)



8" WATER & 8" SEWER MAINS: SAINT CHARLES PLACE

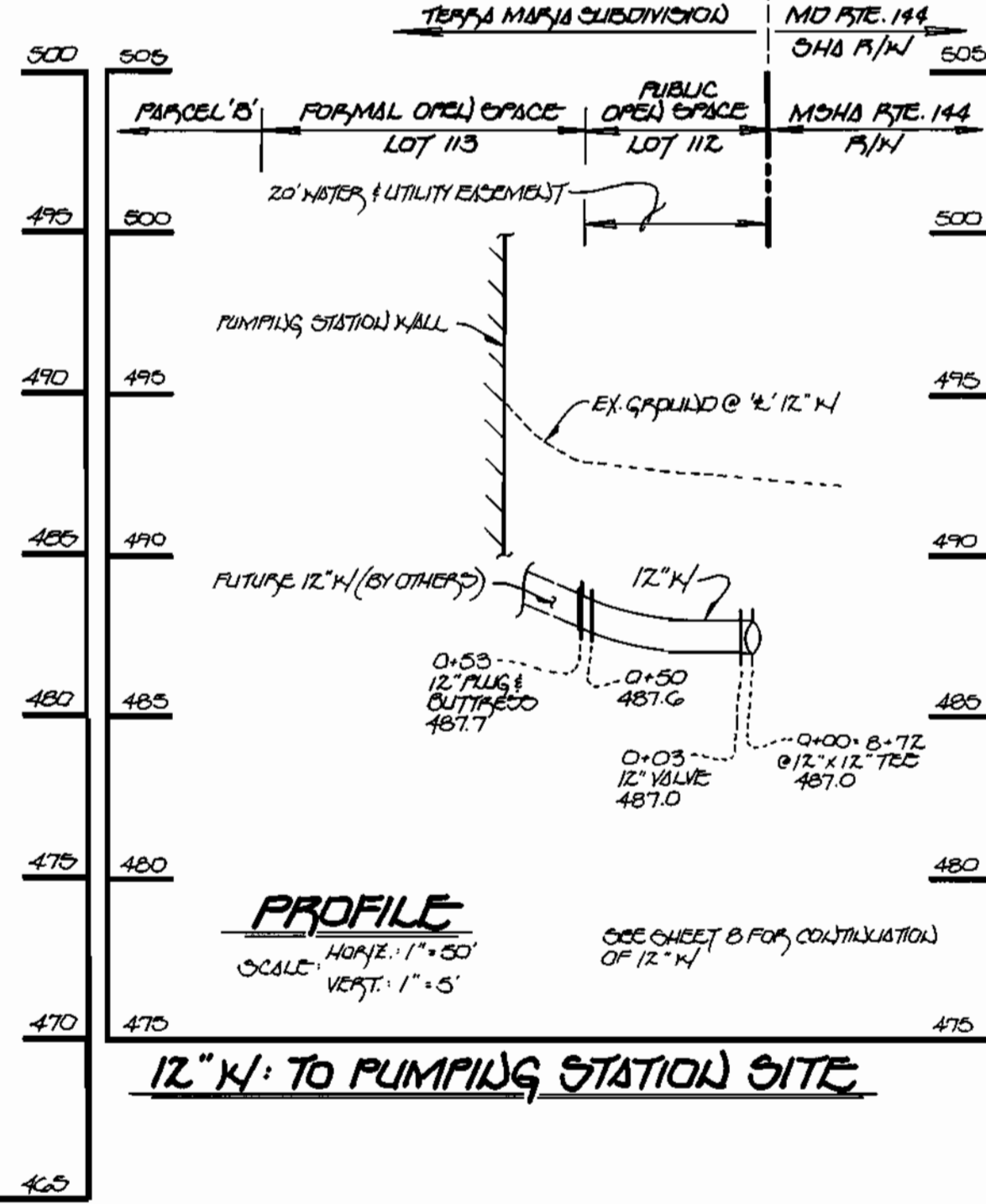
GROTTO WALK

(40' P/W)



8" & 6" WATER & 8" SEWER MAINS: GROTTO WALK

12" W: TO PUMPING STATION SITE

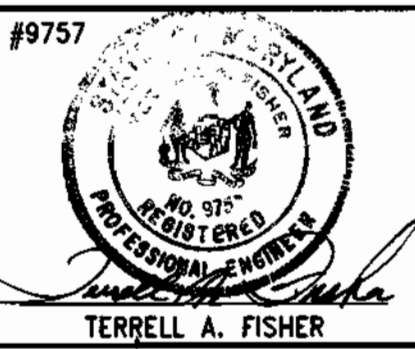


DEPARTMENT OF PUBLIC WORKS
BUREAU OF ENGINEERING
HOWARD COUNTY, MARYLAND
8/31/95

DEPARTMENT OF PUBLIC WORKS
BUREAU OF UTILITIES
HOWARD COUNTY, MARYLAND
8-28-95

DEPARTMENT OF PLANNING & ZONING
HOWARD COUNTY, MARYLAND
9/1/95

FISHER, COLLINS & CARTER, INC.
CIVIL ENGINEERING CONSULTANTS & LAND SURVEYORS
SUITE 100, 9171 BALTIMORE NATIONAL PIKE
ELLICOTT CITY, MARYLAND 21042
(410) 481-2855



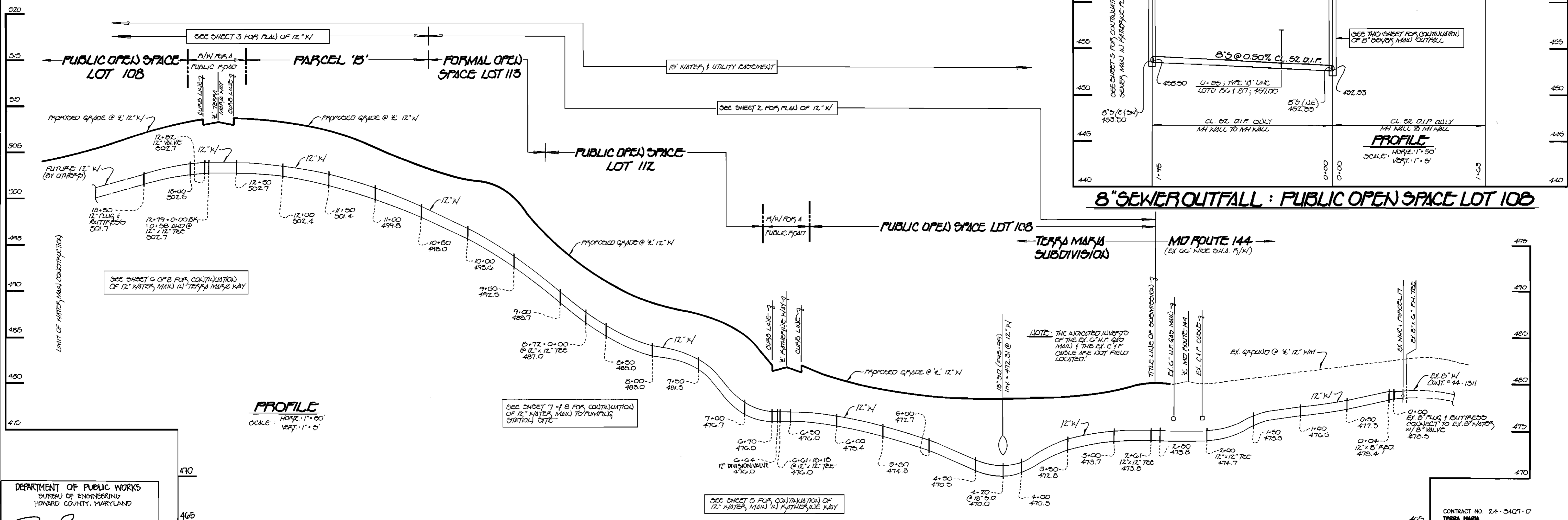
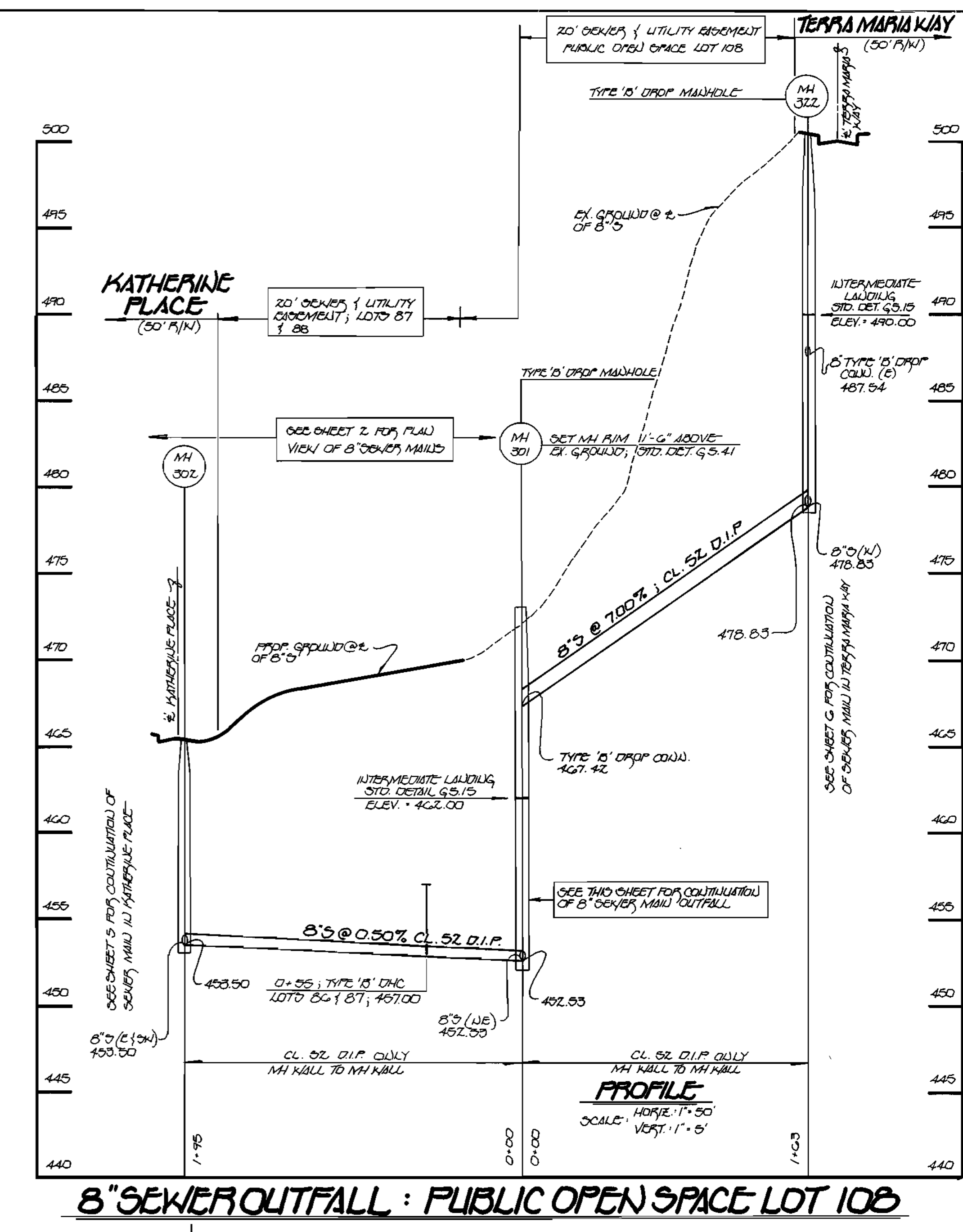
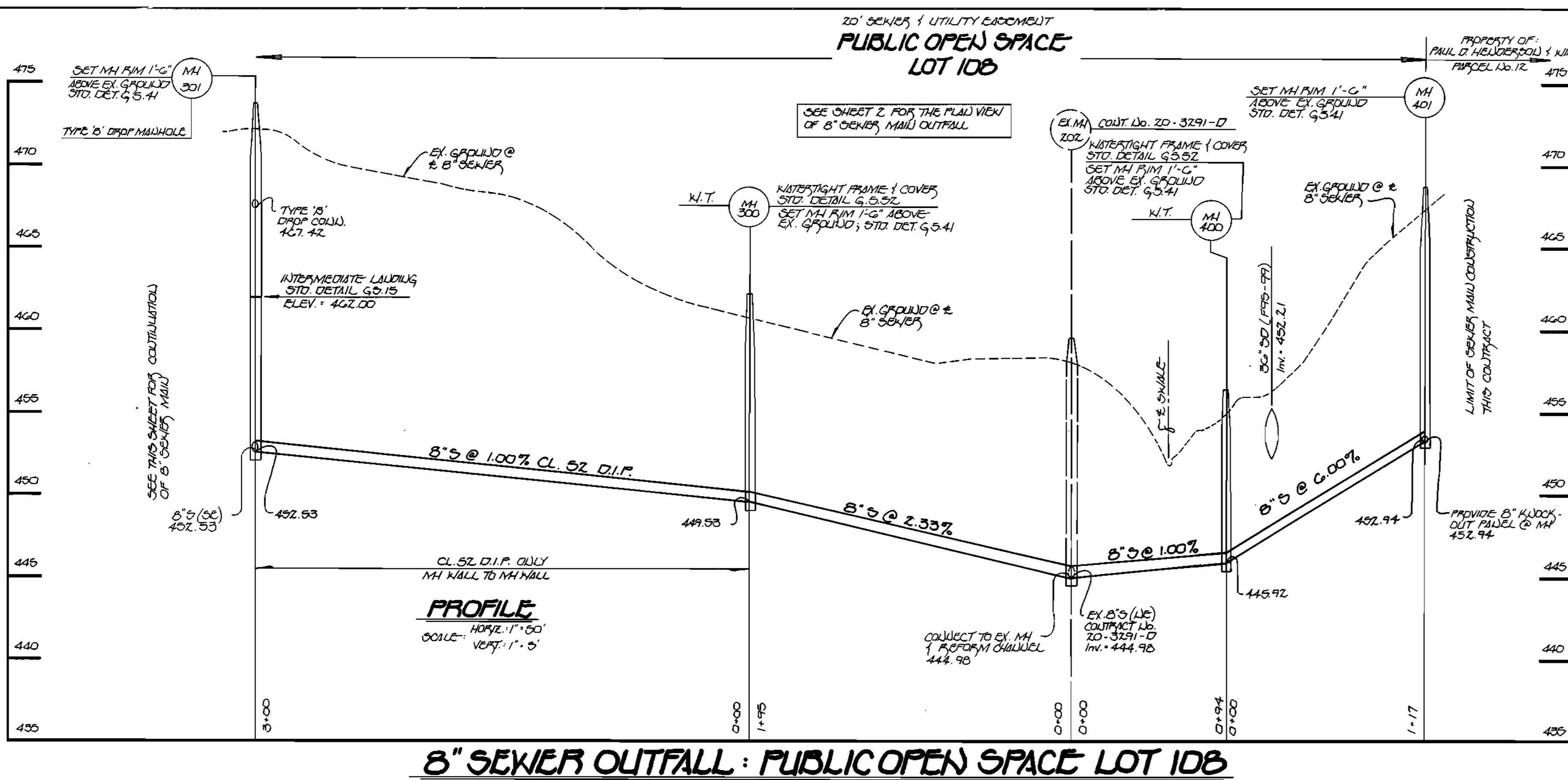
DES:	M.J.M.	DATE:	4/5/95
DRWN:	J.M.M.	BY:	
CHK:	P.W.K.	NO.	
DATE:		REVISION:	

WATER AND SEWER MAINS PROFILES
600' SCALE MAP NO. 10 BLOCK NO. 23

TERRA MARIA
LOTS 3-118
CONTRACT NO. 24-3407-D
SECOND ELECTION DISTRICT
HOWARD COUNTY, MARYLAND
SCALE AS SHOWN
SHEET 7 OF 8

CONTRACT NO. 24-3407-D
TERRA MARIA
LOTS 3-118
WATER AND SEWER EXTENSIONS
HOWARD COUNTY, MARYLAND

3407 ws/8 Terra Maria



DEPARTMENT OF PUBLIC WORKS
BUREAU OF ENGINEERING
HOWARD COUNTY, MARYLAND

Robert J. ... 8/3/95
CHIEF, BUREAU OF ENGINEERING DATE

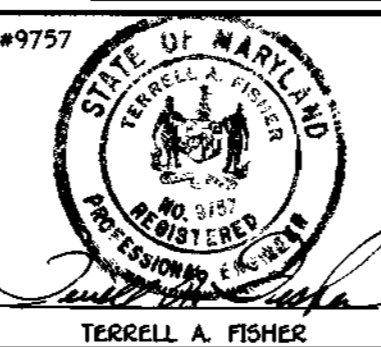
DEPARTMENT OF PUBLIC WORKS
HOWARD COUNTY, MARYLAND

Robert J. ... 8-28-95
CHIEF, BUREAU OF UTILITIES DATE

DEPARTMENT OF PLANNING & ZONING
HOWARD COUNTY, MARYLAND

... 9/1/95
CHIEF, DEVELOPMENT ENGINEERING DIVISION DATE

Fisher, Collins & Carter, Inc.
CIVIL ENGINEERING CONSULTANTS &
LAND SURVEYORS
Suite 100, 9171 Baltimore National Pike
Ellicott City, Maryland 21042
(410) 481-2886



DES: M.J.M.	DATE: 4/5/95
DRWN: J.M.M.	BY NO.
CHK: P.W.K.	REVISION
DATE: 4/5/95	DATE

WATER AND SEWER MAINS PROFILES

600' SCALE MAP NO. 15 BLOCK NO. 23

TERRA MARIA
LOT NOS. 3-118
CONTRACT NO. 24-3407-D
SECOND ELECTION DISTRICT
HOWARD COUNTY, MARYLAND

SCALE AS SHOWN
SHEET 8 OF 8

3407 w/s 18-A TERRA MARIA

SEWER HOUSE CONNECTION AS BUILT

LOT#	DESCRIPTION	LOCATION	TYPE
1	N/A		
2	N/A		
3	N/A		
4	67' FROM FH VALVE	23' FROM MH 334	
5	88' "	37' "	
6	85' " MH 334	31' " SHC 9	
7	76' " FH "	199' " MH 324	
8	29' " "	52' " "	
9	52' " SHC 10	38' " SHC 11	
10	95' " MH 325	55' " "	
11	59' " "	51' " S.D. MH	
12	20' " "	44' " MH 329	
13	43' " S.D. MH	61' " " 327	
14	17' " MH 326	29' " "	
15	32' " "	15' " "	
16	63' " "	54' " "	
17	87' " "	30' " S.D. INLET	
18	16' " " 328	36' " WHC 19	
19	15' " " 327	66' " MH 325	
20	54' " SHC 11	70' " SHC 10	
21	78' " MH 324	86' " MH 323	
22	53' " SHC 38	47' " SHC 37	
23	31' " MH 323	105' " MH 323	
24	52' " " 322	54' " " 325	
25	64' " " 326	64' " SHC 29	
26	39' " "	51' " MH 332	
27	40' " FH "	98' " " 330	
28	69' " SHC 29	58' " FH "	
29	38' " MH 330	35' " MH 330	
30	20' " " 331	41' " " 332	
31	39' " "	100' " " 336	
32	37' " " 332	53' " SHC 26	
33	28' " " 336	33' " MH 336	
34	63' " " 335	59' " " 335	
35	17' " "	50' " SHC 38	
36	20' " " 323	83' " MH 323	
37	83' " FH "	91' " " 324	
38	61' " SHC 42	46' " SHC 40	
39	56' " " 41	77' " MH 334	
40	56' " MH 334	104' " FH VALVE	
41	34' " "	60' " "	
42	54' " " 333	91' " S.D. MH	
43	33' " "	47' " "	
44	32' " "	72' " "	
45	36' " "	14' " "	
46	61' " " 317	31' " FH "	
47	39' " "	72' " MH 317	
48	88' FROM MH 317	59' " MH 317	
49	82' FROM FH "	48' " 4" VALVE (PARCEL A)	
50	59' " SHC 51	28' " "	
51	59' " " 52	70' " MH 307	
52	72' " FH "	112' " "	
53	101' " MH 308	61' " SHC 57	
54	39' TO MH 308	56' " "	
55	55' FROM MH 308	37' " "	
56	40' " SHC 50	58' " "	
57	48' " FH "	97' " MH 316	
58	13' " MH 315	72' " MH 310	
59	73' " " 310	70' " FH "	
60	67' " SHC 64	104' " MH 313	
61	70' " " 64	42' " "	
62	64' " " 65	15' " "	
63	32' " MH 313	82' " " 314	
64	30' " "	40' " "	
65	76' " " 314	38' " SHC 10	
66	17' " "	89' " MH 312	
67	44' " "	35' " "	
68	96' " FH "	40' " TO MH 312	
69	77' " MH 311	96' " FROM MH 312	
70	60' " SHC 73	22' " " 311	
71	26' " MH 311	104' " SHC 77	
72	25' " " 316	57' " " 76	
73	18' " " 309	58' " MH 315	
74	95' " "	49' " 12" VALVE	
75	15' " S.D. MH INLET	100' " MH 305	
76	114' " MH 303	100' " " 304	
77	45' " "	79' " SHC 80	
78	30' " "	108' " WHC 84	
79	44' " "	67' " FH VALVE	
80	72' " FH "	54' " "	
81	78' " MH 302	79' " "	
82	39' " "	36' " MH 301	
83	13' " S.D. INLET	34' " S.D. INLET	
84	58' " MH 301	45' " MH 318	
85	36' " " 319	45' " "	
86	53' " "	34' " " 319	
87	15' " " 320	86' " " 319	
88	38' " "	61' " SHC 93	
89	58' " FH "	39' " MH 320	
90	100' " "	65' " FH "	
91	56' " MH 321	15' " "	
92	45' " "	89' " "	
93	42' " " 320	72' " SHC 93	
94	21' " FH "	41' " MH 320	
95	25' " MH 321	59' " FH "	
96	113' " "	118' " "	
97	74' " MH 304	96' " S.D. INLET	
98	70' " " 303	66' " SHC 80	
99	34' " "	82' " WHC 84	
100	89' " FH "	74' " FH VALVE	
101	14' " "	34' " "	

WATER HOUSE CONNECTION AS BUILT

LOT#	DESCRIPTION	LOCATION	TYPE
1	N/A		
2	N/A		
3	N/A		
4	74' FROM FH VALVE	26' FROM MH 334	
5	79' " "	30' " SHC 9	
6	64' " MH 334	82' " MH 324	
7	60' " FH "	76' " "	
8	53' " "	40' " S.D. INLET	
9	40' " S.D. MH	45' " " MH	
10	41' " "	26' " MH 329	
11	26' " "	60' " "	
12	25' " "	31' " MH 325	
13	37' " S.D. MH	24' " " 327	
14	21' " MH 326	30' " "	
15	41' " "	34' " "	
16	71' " "	32' " " 328	
17	83' " " 327	32' " S.D. INLET	
18	28' " " 328	32' " SHC 19	
19	39' " " 337	30' " S.D. INLET	
20	17' " S.D. MH	22' " FH "	
21	20' " "	88' " MH 322	
22	44' " MH 323	64' " "	
23	41' " "	51' " " 336	
24	72' " " 325	71' " FH "	
25	67' " "	71' " "	
26	65' " " 332	71' " "	
27	73' " "	71' " "	
28	93' " " 330	71' " FH "	
29	47' " "	29' " MH 301	
30	25' " "	82' " " 332	
31	28' " " 331	74' " " 336	
32	61' " " 332	68' " " 336	
33	66' " " 336	49' " " 336	
34	33' " "	44' " " 332	
35	27' " " 323	61' " FH "	
36	28' " "	67' " "	
37	26' " " 323	73' " MH 324	
38	31' " "	77' " "	
39	73' " FH "	82' " SHC 48	
40	70' " "	27' " FH VALVE	
41	35' " SHC 41	88' " MH 333	
42	43' " "	21' " "	
43	34' " MH 334	21' " "	
44	24' " S.D. MH	20' " "	
45	86' " "	34' " S.D. MH	
46	41' " "	44' " MH 317	
47	41' " "	66' " "	
48	35' " "	72' " "	
49	72' " MH 333	87' " " 307	
50	88' " FH "	82' " "	
51	91' " "	87' " FH "	
52	96' " "	21' " SHC 58	
53	84' " "	24' " " 56	
54	80' " "	30' " " 59	
55	32' FROM A VALVE	15' " INLET	
56	39' FROM SHC 56	64' " "	
57	34' " MH 308	58' " MH 310	
58	68' " FH "	100' " FH "	
59	62' " "	98' " INLET 64/66	
60	36' " MH 315	63' " "	
61	41' " "	67' " MH 314	
62	33' " WHC 63	58' " MH 314	
63	68' " INLET 64/66	67' " " 313	
64	63' " "	43' " WHC 68	
65	21' " MH 314	30' " FH "	
66	13' " "	58' " "	
67	62' " "	67' " "	
68	59' " "	43' " "	
69	20' " "	80' " "	
70	42' " "	58' " "	
71	85' " "	43' " "	
72	29' " " 312	53' " MH 311	
73	23' " SHC 73	47' " " 316	
74	30' " "	72' " " 315	
75	30' " MH 311	35' " 12" VALVE	
76	71' " "	37' " SHC 102	
77	22' " " 316	53' " WHC 84	
78	22' " " 316	82' " FH VALVE	
79	63' " " 305	57' " "	
80	28' " SHC 80	60' " "	
81	33' " MH 303	111' " "	
82	31' " "	47' " MH 318	
83	32' " FH "	41' " "	
84	32' " MH 302	108' " "	
85	30' " "	113' " "	
86	25' " "	23' " SHC 93	
87	31' " "	18' " FH "	
88	31' " "	28' " "	
89	32' " " 320	58' " SHC 93	
90	67' " "	53' " MH 320	
91	70' " "	79' " " 321	
92	38' " "	83' " "	
93	38' " "	97' " S.D. MH	
94	31' " "	103' " "	
95	33' " "		
96	35' " "		
97	29' " "		
98	30' " FH "		
99	65' " S.D. MH 11		
100	70' " "		
101	78' " MH 304		
102	83' " "		

LOT#	DESCRIPTION	LOCATION	TYPE
103	47' FROM MH 303	72' FROM WHC 84	
104	52' " " " "	67' " " " "	
105	82' " " " "	43' " " FH VALVE	
106	66' " S.D. MH	88' " MH 323	
111	39' " FH VALVE	33' " FH "	

DEPARTMENT OF PUBLIC WORKS
HOWARD COUNTY, MARYLAND

DIRECTOR OF PUBLIC WORKS _____ DATE _____
CHIEF, BUREAU OF ENGINEERING _____ DATE _____

DES:	
DRN:	
CHK:	
DATE:	

SEWER & WATER AS-BUILT
ADDITIONAL INFORMATION

TERRA MARIA
LOT NOS. 3-118
CONTRACT NO. 24-3407-D
SECOND ELECTION DISTRICT
HOWARD COUNTY, MARYLAND

SCALE AS SHOWN
SHEET 8A OF 8A