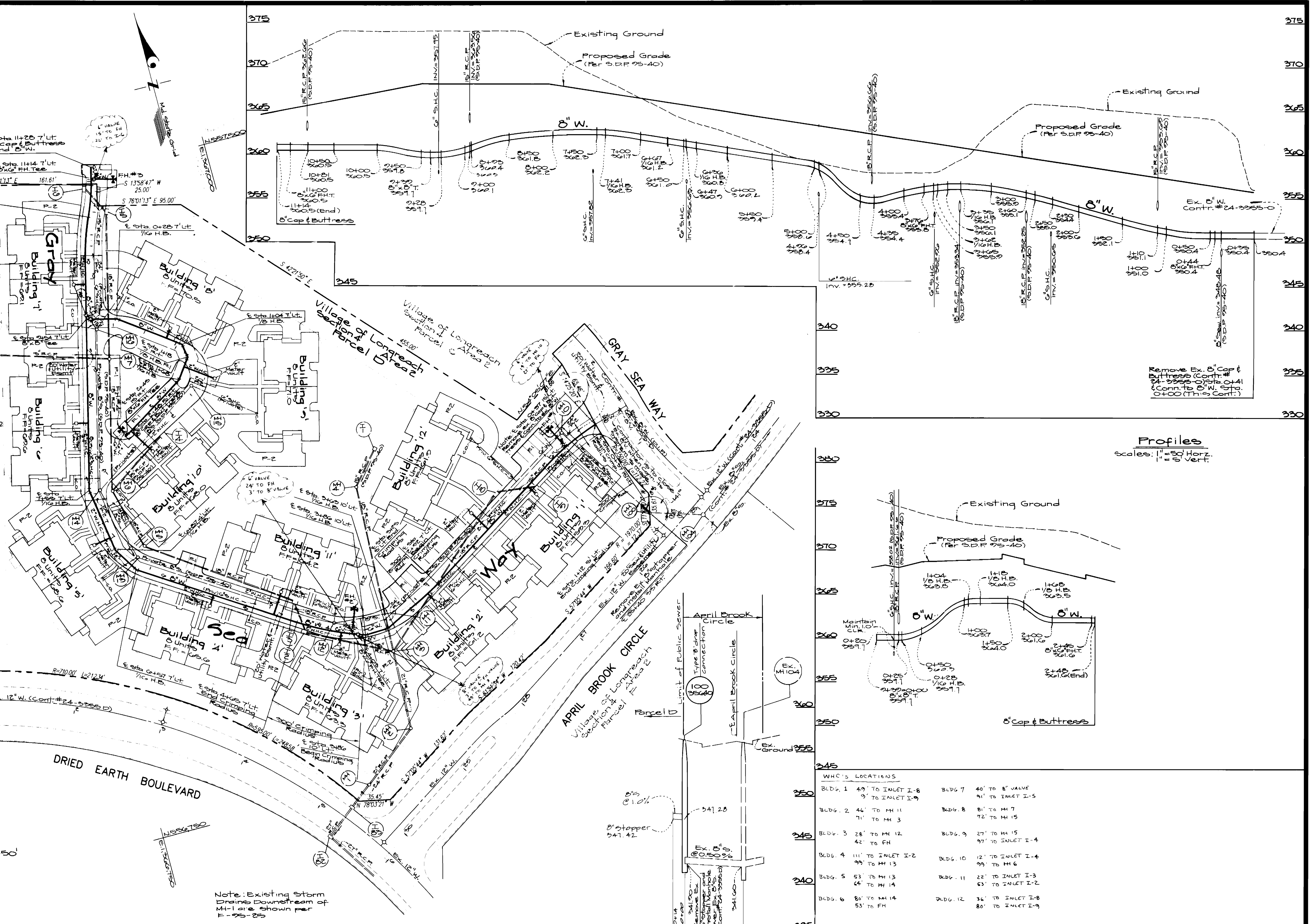




3397 ws/2 V.L.R. 4/2 Gray Sea Way

| Fire Hydrant Data |                 |                |
|-------------------|-----------------|----------------|
| Fire Hydrant #    | Bury Line Elev. | Depth to Elbow |
| 1                 | 357.04          | 7.0'           |
| 2                 | 361.90          | 6.0'           |
| 3                 | 366.34          | 6.0'           |
| 4                 | 367.91          | 6.5'           |



Stowick River Parkway

Plan Scale: 1"=50'

Note: Existing Storm Drains Downstream of MH-1 are shown per F-95-25

| WHC'S LOCATIONS |                   |          |                  |
|-----------------|-------------------|----------|------------------|
| Bldg. 1         | 49' TO INLET I-8  | Bldg. 7  | 40' TO 8" VALVE  |
|                 | 9' TO INLET I-9   | Bldg. 8  | 81' TO MH 7      |
| Bldg. 2         | 44' TO MH 11      |          | 72' TO MH 15     |
|                 | 71' TO MH 3       | Bldg. 9  | 27' TO MH 15     |
| Bldg. 3         | 28' TO MH 12      |          | 97' TO INLET I-4 |
|                 | 42' TO FH         | Bldg. 10 | 12' TO INLET I-4 |
| Bldg. 4         | 111' TO INLET I-2 |          | 99' TO MH 6      |
|                 | 99' TO MH 13      | Bldg. 11 | 22' TO INLET I-3 |
| Bldg. 5         | 53' TO MH 13      |          | 53' TO INLET I-2 |
|                 | 64' TO MH 14      | Bldg. 12 | 34' TO INLET I-8 |
| Bldg. 6         | 80' TO MH 14      |          | 80' TO INLET I-9 |
|                 | 53' TO FH         |          |                  |

DEPARTMENT OF PUBLIC WORKS  
HOWARD COUNTY, MARYLAND

*James J. Allen* 3/6/95  
DIRECTOR OF PUBLIC WORKS DATE

*Robert M. Beigner* 2-24-95  
CHIEF, BUREAU OF UTILITIES DATE

*Paul J. Jenson* 3/6/95  
CHIEF, BUREAU OF ENGINEERING DATE

*John J. ...* 5/6/95  
CHIEF, LAND DEVELOPMENT DIV. DATE

**GLW** GUTSCHICK LITTLE & WEBER, P.A.  
CIVIL ENGINEERS, SURVEYORS, PLANNERS, LANDSCAPE ARCHITECTS  
3909 NATIONAL DRIVE - SUITE 250 - BURTONSVILLE OFFICE PARK - BURTONSVILLE, MARYLAND 20866  
TEL: (410) 880-1820 ~ FAX: (301) 421-4186

|             |        |   |               |
|-------------|--------|---|---------------|
| DES: T.M.L. |        |   |               |
| DRN: W.S.J. |        |   |               |
| CHK: REV.   |        |   |               |
| DATE: 12/94 | BY: NO | REVISION: REV 8" WATER 4" SS TO 12" DIA. 2" SS 2" DIA TO MH 100, PLAN PROFILE | DATE: 5/31/95 |

Public Water and Sewer Construction Plans  
Plan and Profile Sheet  
600' SCALE MAP NO. 37 BLOCK NO. 13

Columbia Village Of Longreach Section 4 Area 2 Cont. # 24-3397-D  
Sixth Election District Howard County, Md.

SCALE AS SHOWN  
SHEET 2 OF 2