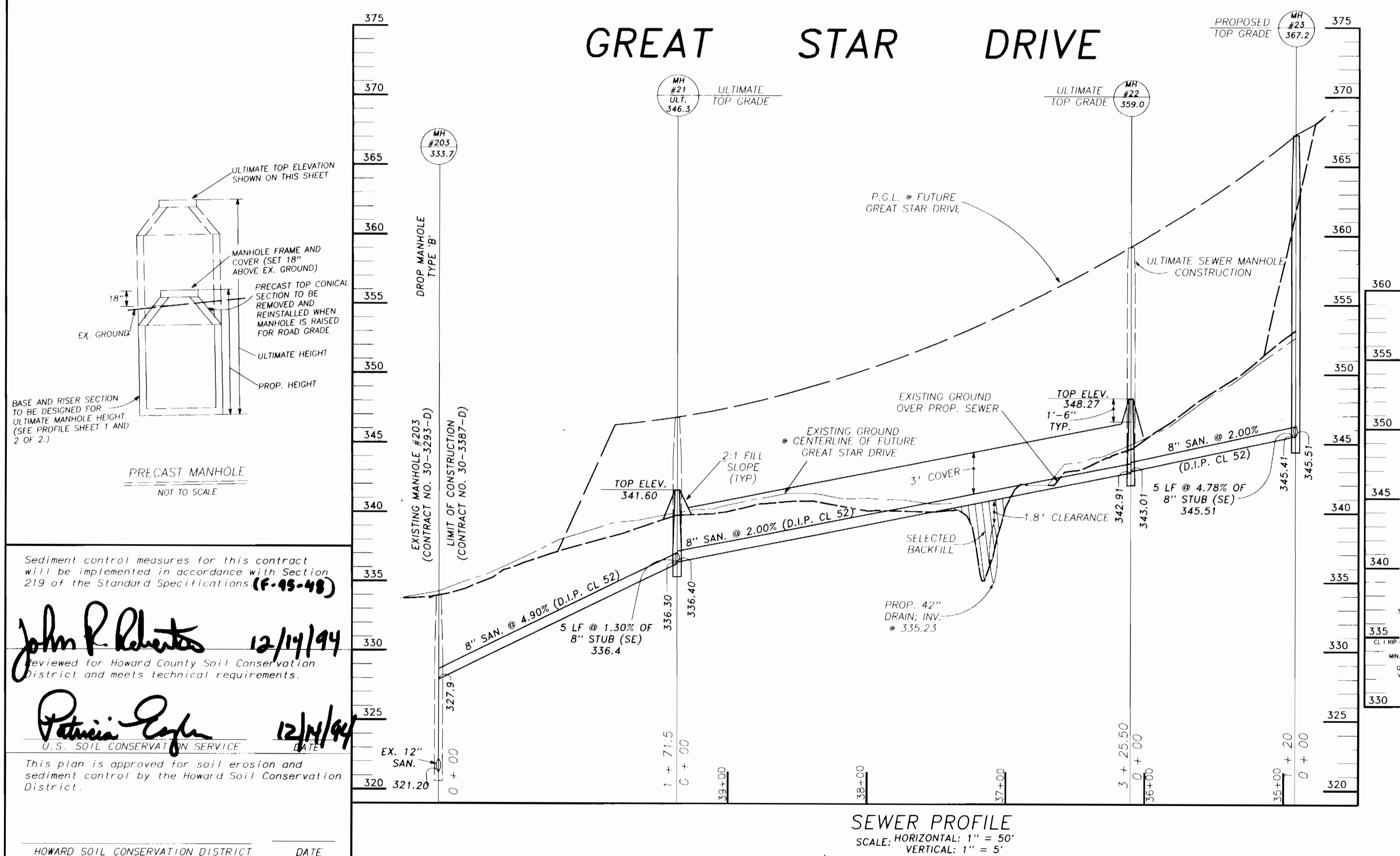
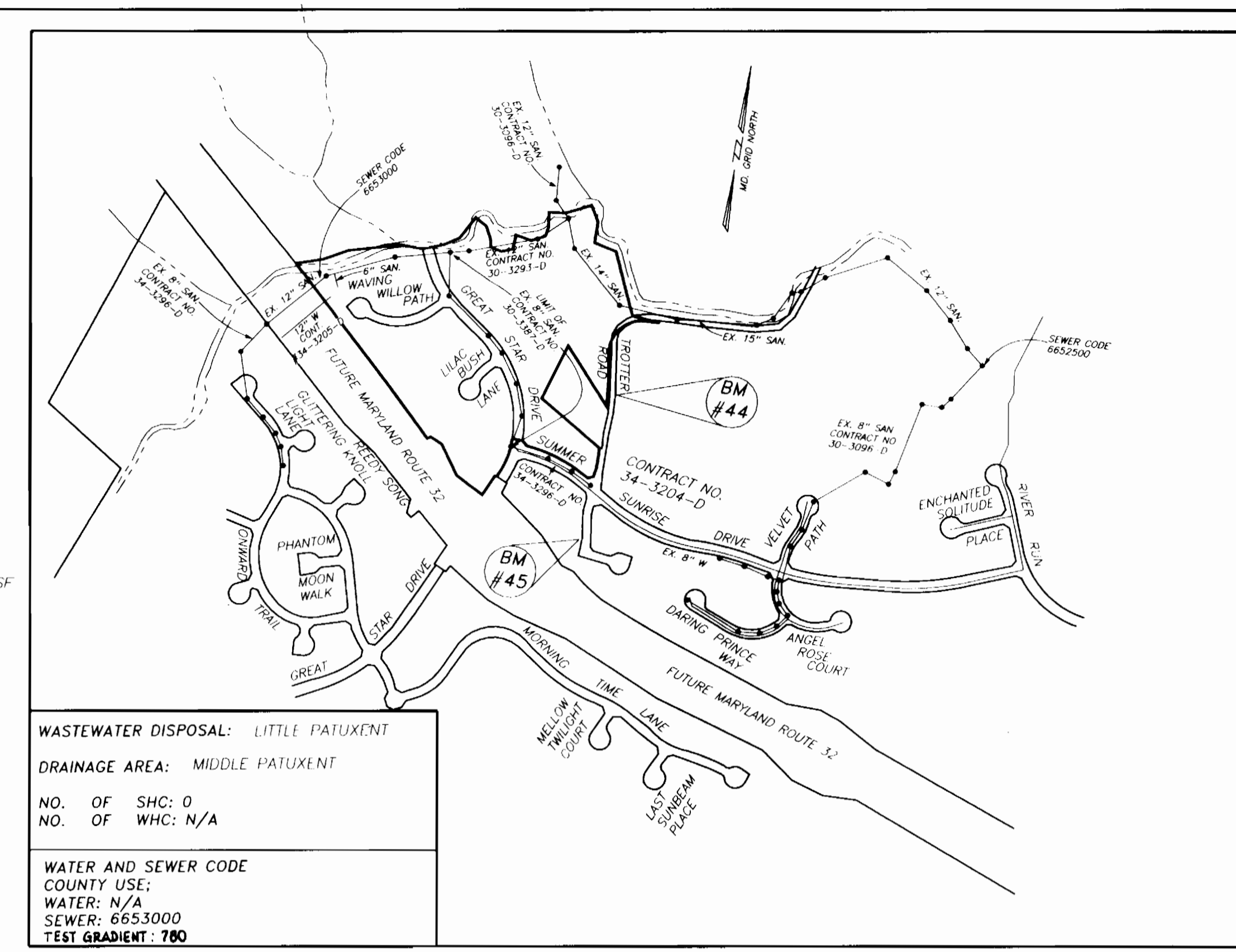
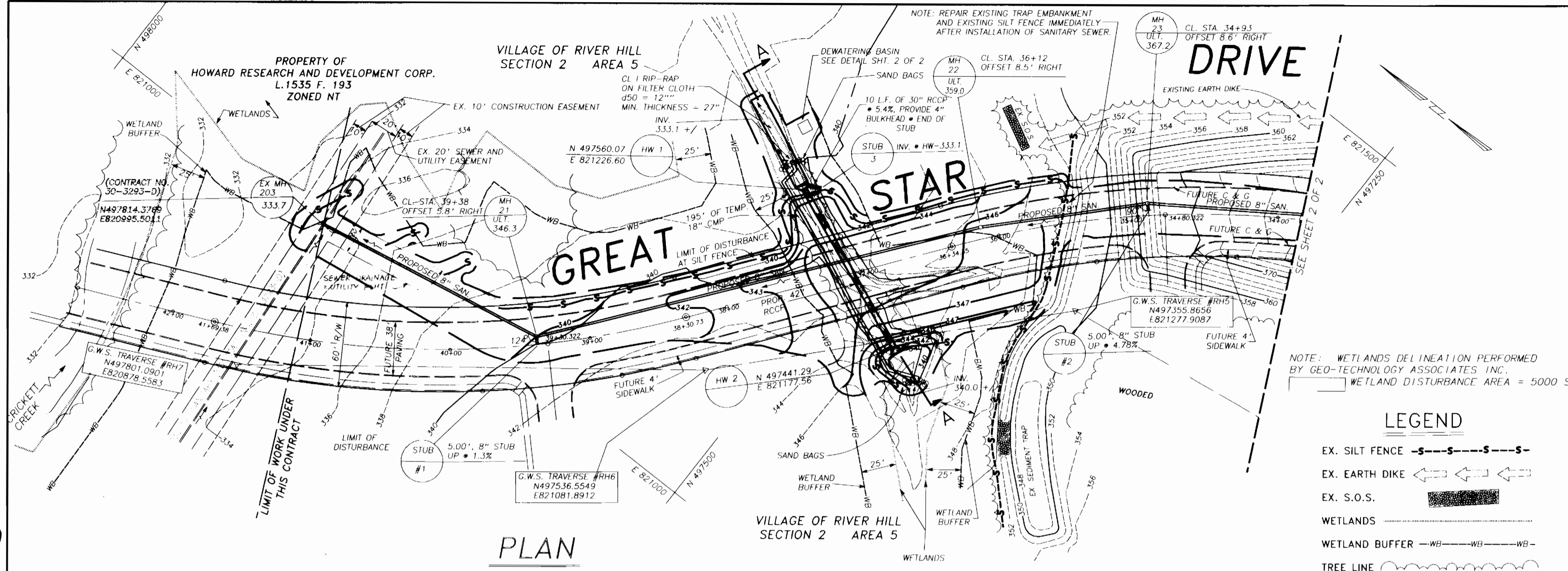


3387 WS/1 V.R.H. 1/5 Outfall Sewer along Great Star Dr.



ITEM	BID	AS-BUILT	MATERIAL/SUPPLIER
MANHOLE EA.	6		
8" SEWER L.F.	1230		

Sediment control measures for this contract will be implemented in accordance with Section 219 of the Standard Specifications (P-95-48)

John P. Roberts 12/17/94
Reviewed for Howard County Soil Conservation District and meets technical requirements.

Patricia Egan 12/14/94
U.S. SOIL CONSERVATION SERVICE

This plan is approved for soil erosion and sediment control by the Howard County Soil Conservation District.

HOWARD SOIL CONSERVATION DISTRICT DATE

DEPARTMENT OF PUBLIC WORKS
HOWARD COUNTY, MARYLAND

James J. [Signature] 12/14/94
DIRECTOR OF PUBLIC WORKS

Robert [Signature] 12-13-94
CHIEF, BUREAU OF UTILITIES

GEORGE WILLIAM STEPHENS, JR.
AND ASSOCIATES, INC.

CIVIL ENGINEERS & LAND SURVEYORS

658 KENILWORTH DRIVE, SUITE 100
TOWSON, MARYLAND 21204
(410) 825-8120

DES BY:	BY:	NO.	REVISIONS	DATE
I. Z.				
C. A. D. D.				
I. Z.				
NOV. 30, 1994				

PLAN AND PROFILE
OF SEWER MAIN
AND 42" STORM DRAIN

600' SCALE MAP NO. 35 BLOCK NO. 14

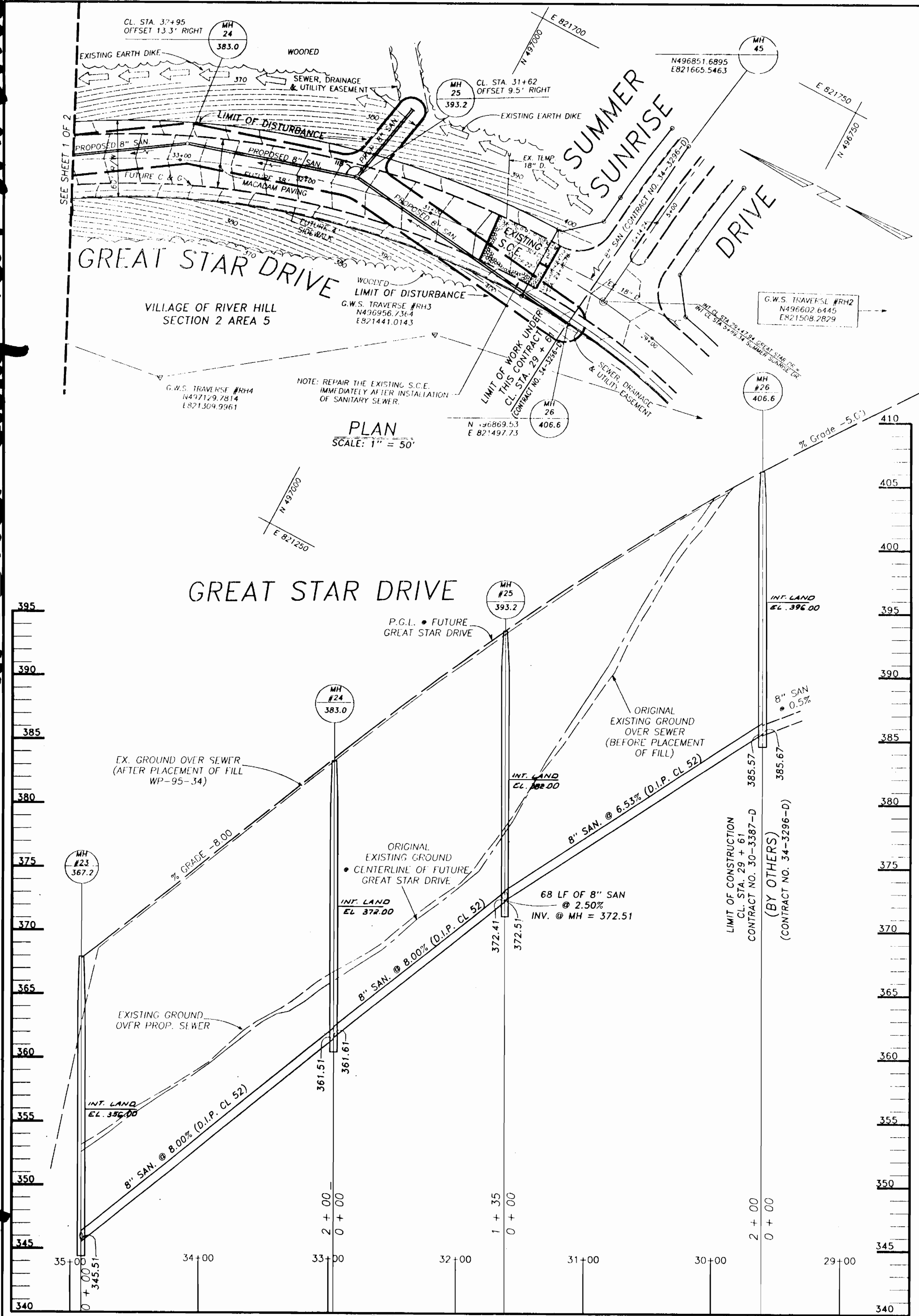
OUTFALL SEWER ALONG FUTURE GREAT STAR DRIVE
VILLAGE OF RIVER HILL
SECTION 2 AREA 5

5TH ELECTION DISTRICT
HOWARD COUNTY, MARYLAND
CONTRACT NO. 30-3387-D

SCALE:
AS SHOWN

SHEET
1 OF 2

3387 WS/2 V.R.H. 2/5 Outfall Sewer along Great Star Drive



PERMANENT SEEDING NOTES
A. APPLIES TO GRADED OR CLEARED AREA NOT SUBJECT TO IMMEDIATE FURTHER DISTURBANCE...

TEMPORARY SEEDING NOTES
A. APPLIES TO GRADED OR CLEARED AREAS LIKELY TO BE REDISTURBED WITHIN A SHORT-TERM VEGETATIVE COVER IS NEEDED...

SEDIMENT CONTROL NOTES
A MINIMUM OF 24 HOURS NOTICE MUST BE GIVEN TO THE HOWARD COUNTY OFFICE OF INSPECTION AND PERMITS PRIOR TO THE START OF ANY CONSTRUCTION...

ALL DISTURBED AREAS MUST BE STABILIZED WITHIN THE TIME PERIOD SPECIFIED ABOVE IN ACCORDANCE WITH THE 1983 MARYLAND STANDARDS AND SPECIFICATIONS FOR SOIL EROSION AND SEDIMENT CONTROL FOR PERMANENT SEEDING...

ANY SEDIMENT CONTROL PRACTICE WHICH IS DISTURBED BY GRADING ACTIVITY FOR PLACEMENT OF UTILITIES MUST BE REPAIRED ON THE SAME DAY OF DISTURBANCE.

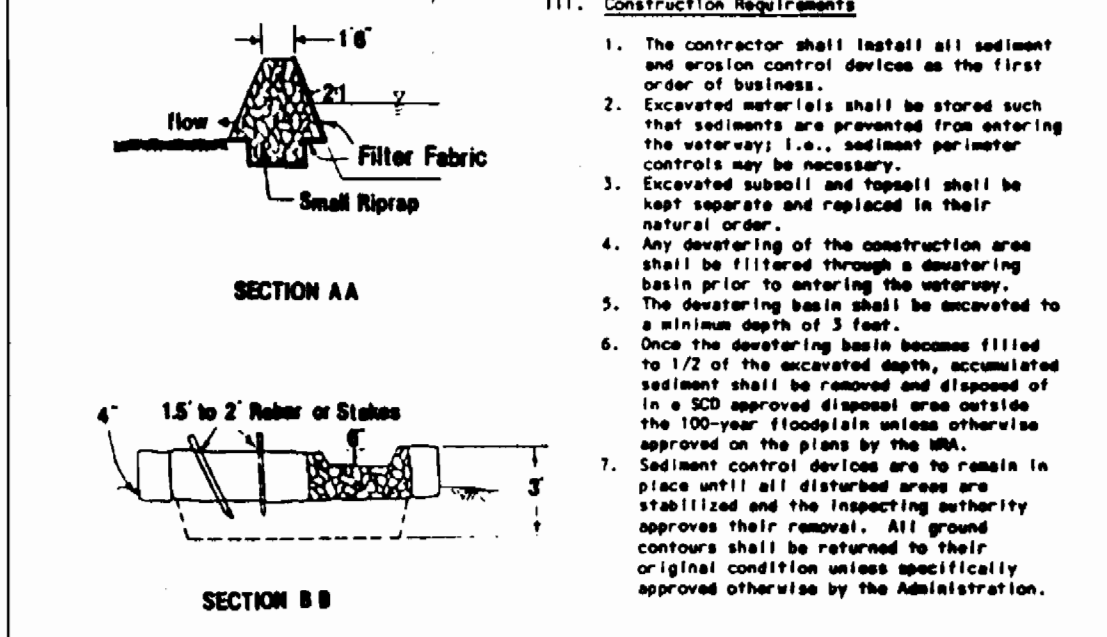
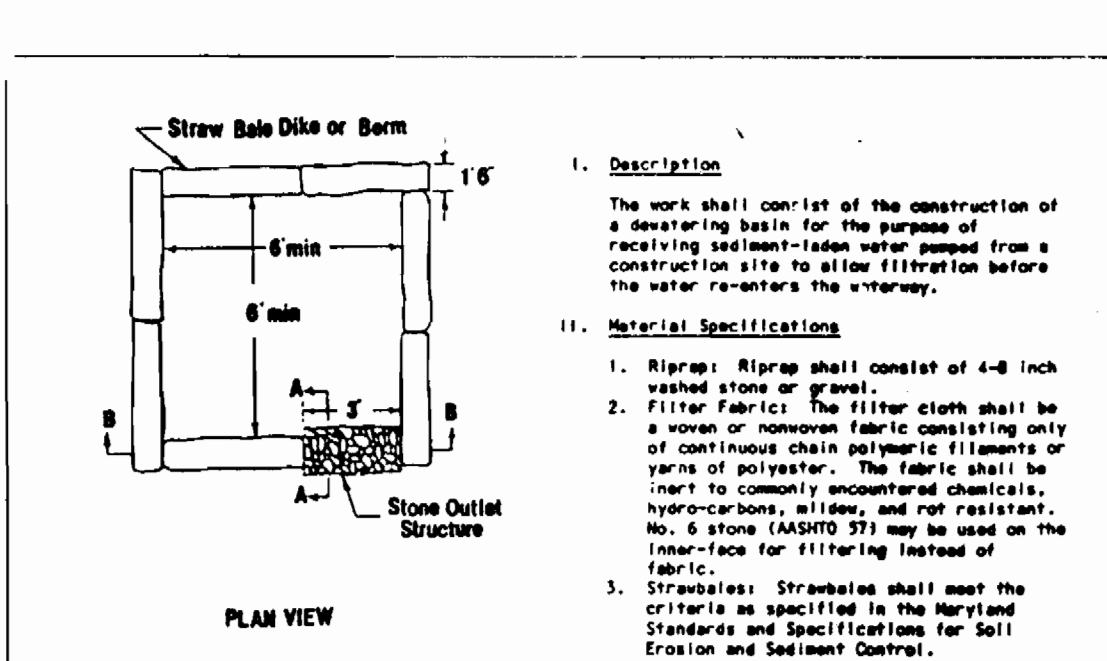
ON ALL SITES WITH DISTURBED AREAS IN EXCESS OF 2 ACRES, APPROVAL OF THE INSPECTION AGENCY SHALL BE REQUESTED UPON COMPLETION OF INSTALLATION OF PERIMETER EROSION AND SEDIMENT CONTROLS...

CUT AND FILL QUANTITIES PROVIDED IN SITE ANALYSIS DO NOT REPRESENT BID QUANTITIES. THESE QUANTITIES DO NOT DISTINGUISH BETWEEN TOPSOIL, STRUCTURAL FILL OR EMBANKMENT MATERIAL...

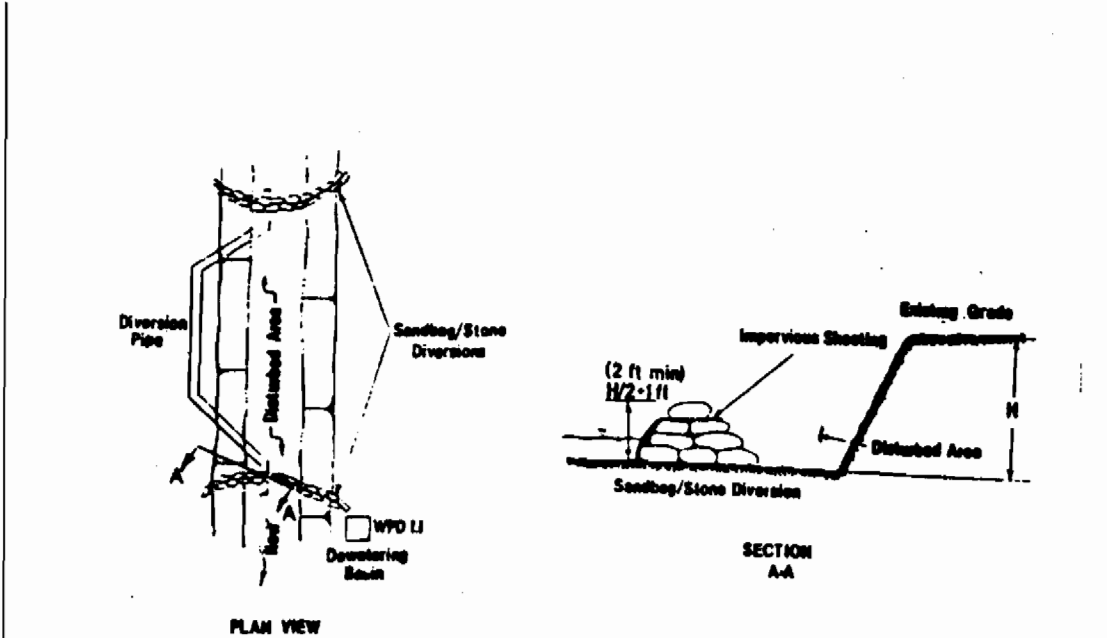
CONDITIONS AND MANAGEMENT PRACTICES FOR WORK IN NONTIDAL WETLANDS
A. STOCKPILE AND MAINTAIN SEPARATELY THE TOP 6"-12" OF TOPSOIL MATERIAL TO BE REPLACED AS THE TOP LAYER OF THE BACKFILLED MATERIAL...

SEQUENCE OF CONSTRUCTION
1. OBTAIN ALL REQUIRED PERMITS, APPROVALS, LICENSES FROM THE APPROPRIATE AGENCIES.
2. NOTIFY THE ENFORCEMENT DIVISION AT LEAST FIVE DAYS PRIOR TO INITIATION OF CONSTRUCTION AND FIVE DAYS AFTER WORK ENDS...

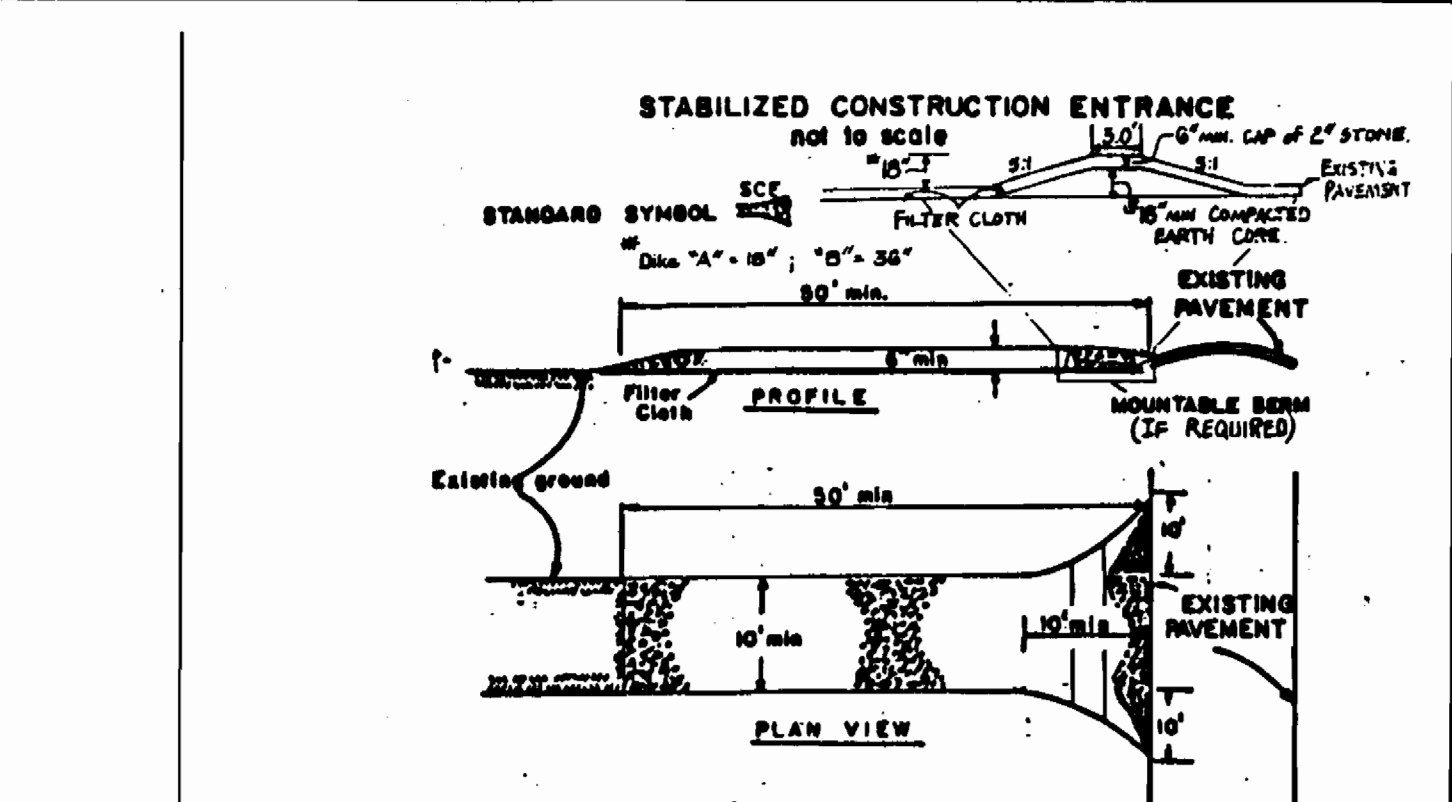
PERMANENT SEED MIXTURE FOR WETLANDS ONLY
ANNUAL RYE: 2-1/2 LBS./1000 SQ. FT.
WELL CUT GRASS: 2 OZ./1000 SQ. FT.



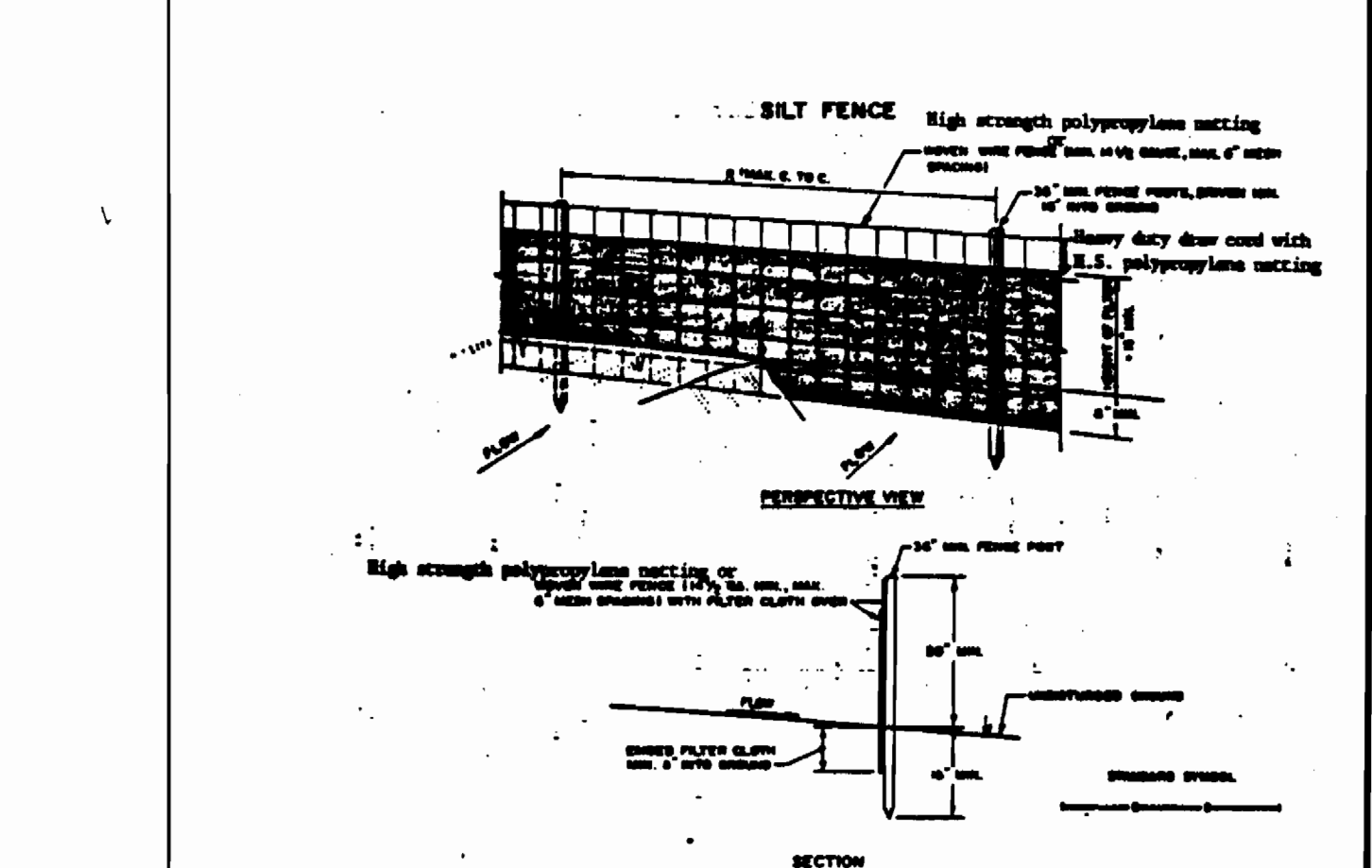
WATER RESOURCES ADMINISTRATION
Dewatering Basin
Approved On: 12-26-94
Chief, Wetlands Permits



WATER RESOURCES ADMINISTRATION
Diversion Pipe
Approved On: 12-26-94
Chief, Wetlands Permits



CONSTRUCTION SPECIFICATIONS
1. Stone Riprap - Use #2 stone, or recycled concrete equivalent.
2. Length - As required, but not less than 30 ft. (except on a single residence lot where a 30 ft minimum length would apply).



CONSTRUCTION NOTES FOR FURCATED SILT FENCE
1. High strength polypropylene silt fence or equivalent shall be installed in accordance with Section 219 of the Standard Specifications.

U.S. SOIL CONSERVATION SERVICE
SILT FENCE
Standard Drawing
SF-1

Sediment control measures for this contract will be implemented in accordance with Section 219 of the Standard Specifications.
Reviewed for Howard County Soil Conservation District and meets technical requirements.

U.S. SOIL CONSERVATION SERVICE
This plan is approved for soil erosion and sediment control by the Howard County Soil Conservation District.
HOWARD SOIL CONSERVATION DISTRICT

DEPARTMENT OF PUBLIC WORKS
HOWARD COUNTY, MARYLAND
DIRECTOR OF PUBLIC WORKS
DATE: 12/14/94

GEORGE WILLIAM STEPHENS, JR. AND ASSOCIATES, INC.
CIVIL ENGINEERS & LAND SURVEYORS
658 KENILWORTH DRIVE, SUITE 100
TOWSON, MARYLAND 21204

Table with columns: DES BY, ORN BY, CHK BY, DATE, BY NO., REVISIONS, DATE. Includes entries for I.Z., C.A.D.D., and I.Z. dated 11/30/94.

PLAN AND PROFILE OF SEWER MAIN
SEDIMENT CONTROL DETAILS
600' SCALE MAP NO. 35 BLOCK NO. 14

OUTFALL SEWER ALONG FUTURE GREAT STAR DRIVE
VILLAGE OF RIVER HILL
SECTION 2 AREA 5
5TH ELECTION DISTRICT
HOWARD COUNTY, MARYLAND
CONTRACT NO. 30-3387-D
SCALE: AS SHOWN
SHEET 2 OF 2