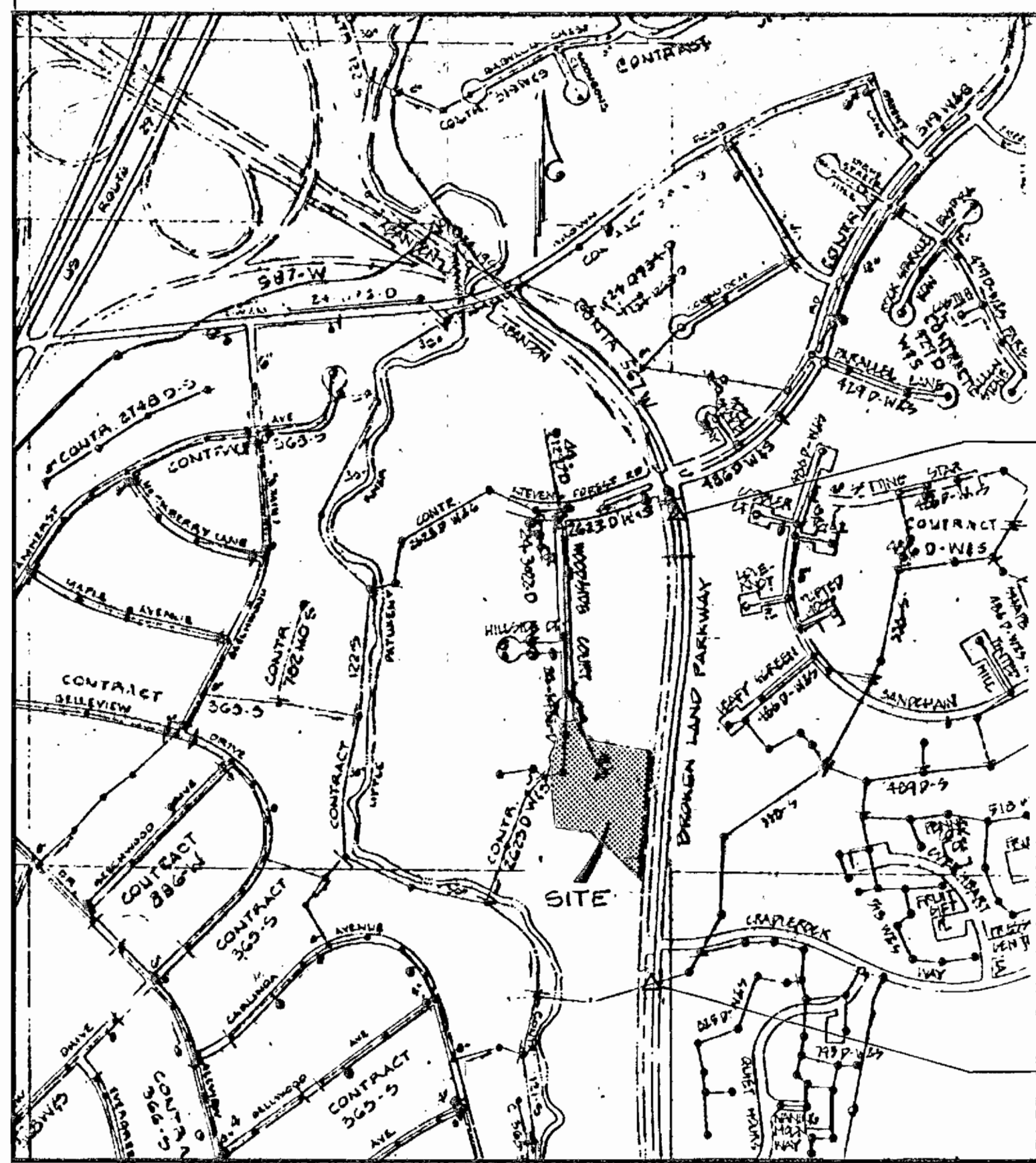


QUANTITY TABLE			
ITEM	DESCRIPTION	QUANTITY	UNIT
1	8" DIP Class 52 (Water)	312	LF
2	8" PVC Sch 40 (Sewer)	165	EA
3	No. of Water House Connections	2	EA
4	No. of Sewer House Connections	2	EA
5	Manholes	1	EA
6	Fire Hydrants	1	EA
7	8" x 6" Tee	1	EA
8	8" Valve	1	EA
9	6" Valve	2	EA
10	8" Plug	2	EA

AS-BUILT QUANTITY LIST			
QUANTITY	DESCRIPTION	SUPPLIER	MANUFACTURER
240 LF	8" D.I.P. CL. 52 WATER	WATER P&D	ATLANTIC STATES
120 LF	8" PVC SCH 40 SEWER	"	J.M. MIFK
20 LF	8" D.I.P. CL. 52	"	ATLANTIC STATES
1 EA	8" X 6" TEE	"	UNION POLYMER
1 EA	8" X 6" HYD. TEE	"	"
2 EA	8" W.P. SLEEVE	"	"
2 EA	8" VALVE	"	MUELLER CO.
1 EA	6" VALVE	"	"
1 EA	FIRE HYDRANT	"	"
2 EA	MANHOLES	ATLANTIC	PROTECT

BENCHMARK DATA		
No.	Location ID	Elevation
36 EA	Broken Land Parkway 0.10 mi South of Stevens Forest Road	355.91
36 HA	Broken Land Parkway 225' South of Cradlerock Way	292.97

D) Refer to Howard County location sketch for exact location



VICINITY MAP
SCALE: 1"=600'

PART I

- Approximate location of existing mains are shown. The contractor shall take all necessary precautions to protect existing mains and services and maintain uninterrupted supply. Any damage incurred shall be repaired immediately to the satisfaction of the Engineer at the Contractor's expense.
- All horizontal controls are based on Maryland State Coordinates.
- All vertical controls are based on U.S.G.S. data.
- All pipe elevations shown are invert elevations.
- Clear all utilities by a minimum of 6'. Clear all poles by 2'-0" minimum or tunnel as required. The owner has contacted the utility companies and has made arrangements for bracing of poles as shown on the drawings. In the event the contractor's work requires the bracing of additional poles, any cost incurred by the owner for bracing of additional poles or damages shall be deducted from money owed the contractor. The contractor shall coordinate with the utility companies to schedule the bracing of the poles.
- For details not shown on the drawings, and for materials and construction methods use Howard County Design Manual, Volume IV, Standard Specifications and Detail for Construction (Latest Edition). The contractor shall have a copy of Volume IV on the job.
- Where test pits have been made on existing utilities, they are noted by the symbol at the location of the test pit. A note or notes containing the results of the test pit or pits is included on the drawings. Existing utilities in the vicinity of the proposed work for which test pits have not been dug shall be located by the contractor two weeks in advance of construction operations at his own expense.
- Contractor shall notify the following utility companies or agencies at least five working days before starting work shown on these plans.

State Highway Administration	531-5533
BGE Co. Contractor Services	850-4520
BGE Co. Underground Damage Control	787-9269
Mass Utility	1-800-297-7777
Colonial Pipeline Co.	795-1390
Howard County Department of Public Works Bureau of Utilities	313-4900
- Trees and shrubs are to be protected from damage to maximum extent. Trees and shrubs located within the construction strip are not to be removed or damaged by the contractor.
- Contractor shall remove trees, stumps and roots along line of excavation. Payment for such removal shall be included in the unit price bid for construction of the main.

PART II - WATER

- All water mains to be D.I.P. Class 52 unless otherwise noted.
- Tops of all water mains to have a minimum of 3'-1/2' cover unless otherwise noted.
- Valves adjacent to tees shall be strapped to tees.
- All fittings shall be buttressed or anchored with concrete in accordance with the Standard Details unless otherwise provided for on the drawings.
- Fire hydrants shall be set to the bury line elevations shown on the drawings. All fire hydrants shall be strapped and buttressed with concrete in accordance with Standard Details. Soil around the fire hydrant shall be compacted in accordance with Section 1000 and 1005 of the Standard Specifications.
- The contractor shall not operate any water main valves on the existing water system.
- All water house connections shall be for inside meter setting unless otherwise noted on plans or in specifications.
- The minimum vertical clearance between any water main and any other underground utilities is one foot.

PART III - SEWER

- All sewer mains shall be DIP, RCP, VCPX, CSPX, RCCP and P.V.C. unless otherwise noted.
- All manholes shall be 4'-0" inside diameter unless otherwise noted.
- Force mains shall be D.I.P. only.
- Manholes shown with 12" and 16" walls are for brick manholes only.
- Manholes designated W.T. in plan and profile shall have watertight frame and covers, Standard Detail 53.52. Where watertight manhole frame and cover is used, set top of frame 1" - 6" above finished grade unless otherwise noted on the drawings.
- House(s) with the symbol "C.N.S." indicates that cellar cannot be served.

THIS DEVELOPMENT PLAN IS APPROVED FOR SOIL EROSION AND SEDIMENT CONTROL BY THE HOWARD SOIL CONSERVATION DISTRICT

APPROVED: *[Signature]* 9/18/94

REVIEWED FOR HOWARD S.C.D. AND MEETS TECHNICAL REQUIREMENTS

APPROVED: *[Signature]* 9/18/94

U.S. SOIL CONSERVATION SERVICE

NOTE: SEDIMENT CONTROL SHALL BE PROVIDED AS PER SDP-94-132 AND SECTION 219 OF THE HOWARD COUNTY DESIGN MANUAL, VOLUME IV, SECTION 219.

Type of Building - 50,000 sq.ft. commercial
 No. of Lots/Parcels - 1
 No. of Water House Connections - 2
 No. of Sewer House Connections - 2
 Drainage Area -
 Treatment Plant - Patuxent
 Water Code - E13
 Sewer Code - 5410000
 Test Gradient - 700

TITLE SHEET

SHEET NO.	TITLE
1	TITLE SHEET
2	PLAN
3	PROFILE

AS-BUILTS

SDP-94-132

DEPARTMENT OF PUBLIC WORKS HOWARD COUNTY, MARYLAND Director of Public Works: <i>[Signature]</i> 9/19/94 Chief, Bureau of Utilities: <i>[Signature]</i> 9-8-94	RBA ENGINEERS - ARCHITECTS - PLANNERS 5588 STERRETT PLACE SUITE 300 COLUMBIA, MARYLAND 21044 410-730-7300	DES: JWC DRN: EP CHK: JMC DATE: AUG 1994	BY NO. REVISION _____ _____ _____	TITLE SHEET WATER MAIN & SEWER LINE NUMBER OF LOTS: 1	VILLAGE OF OWEN BROWN SECTION 5 AREA 1 CONTRACT NO. 24-3380-D 600' SCALE MAP NO. 36 BLOCK NO. 14 6th ELECTION DISTRICT HOWARD COUNTY, MARYLAND	SCALE AS SHOWN SHEET 1 OF 3
--	--	---	--	---	---	--------------------------------

3380 WS/1 V.O.B. 5/1

w/s 3380 v.o.B. pos. sht. #1

TOPOGRAPHIC SURVEY PLAT

LEGEND

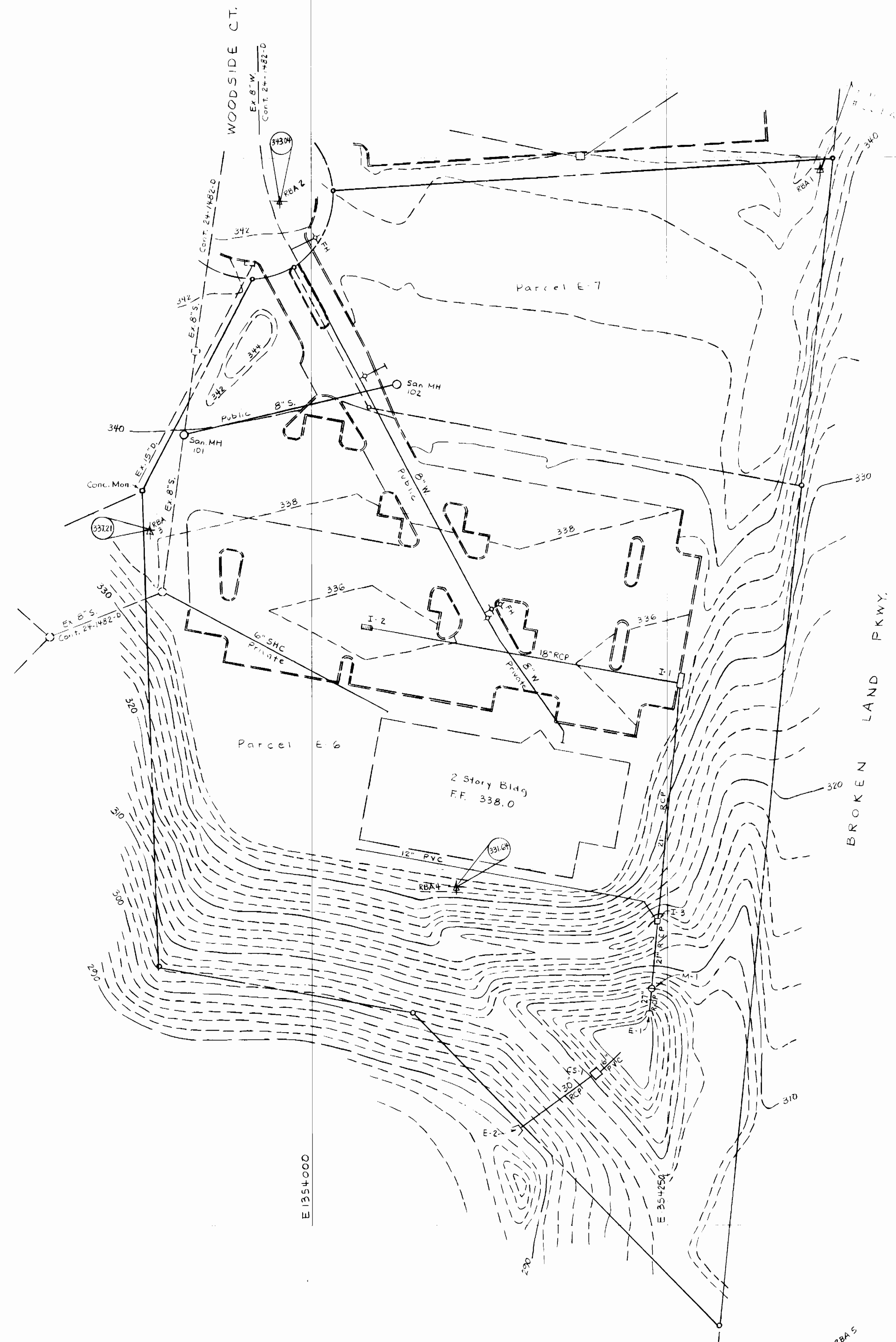
- ADJUNCTION BOUNDARY
- LOT BOUNDARY
- ROAD CENTERLINE
- EDGE OF ROAD

SUBD NAME: Village of Owen Brown
 SEC: 5 AREA: 1
 STREET NAME: Woodside Court
 CAP. PROJ. NO.:
 CONTRACT NO.: 24-3380-D
 FIELD BOOK NO.: 75 (KBA)
 SCALE: 1" = 50'

PREPARED BY:

The K&A Group
 5560 Sterrett Place
 Suite 300
 Columbia, Md. 21044

SHEET NO. 1 OF 1



N 556 750
 N 556 500
 N 556 250
 N 556 000
 E 1353250
 E 1353500
 E 1353750
 E 1354000
 E 1354250
 E 1354500

4		8	
3		7	
2		6	
1		5	
NO	REVISION	NO	DATE