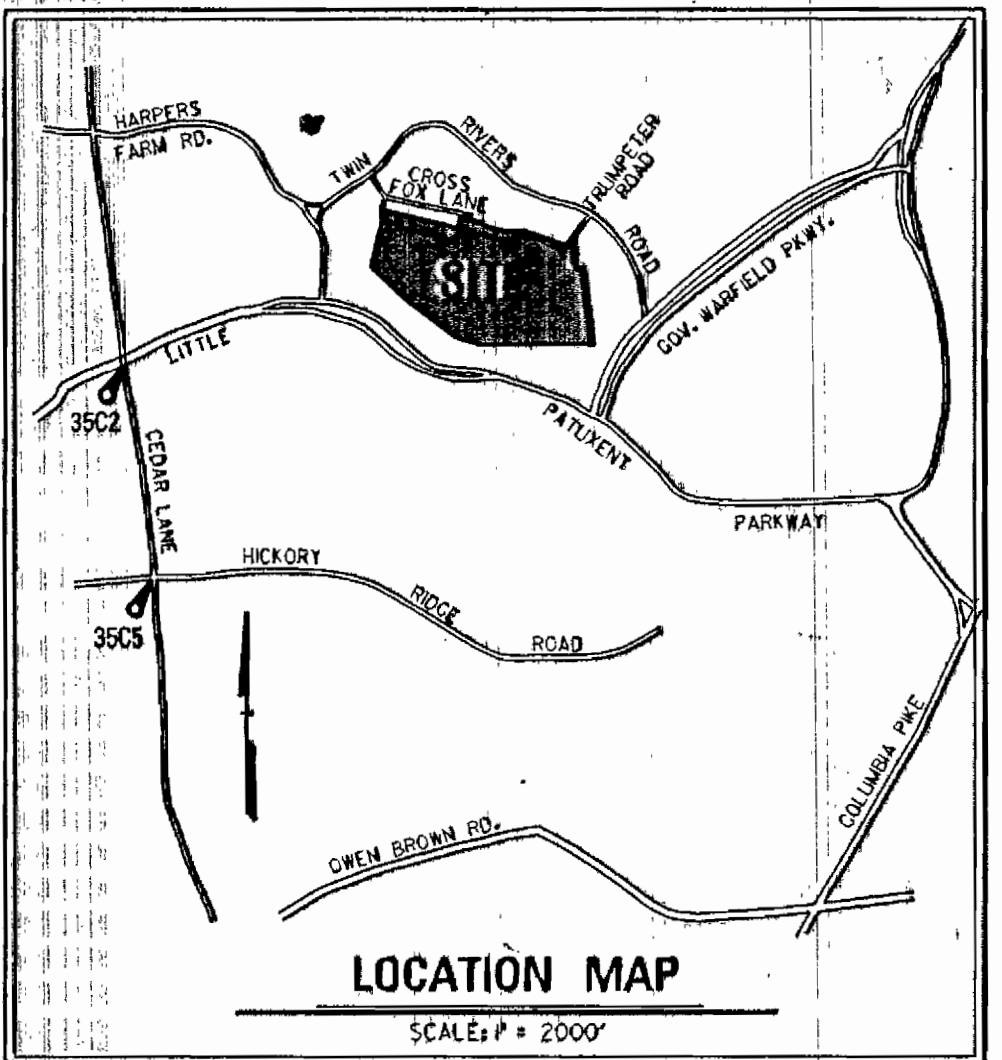
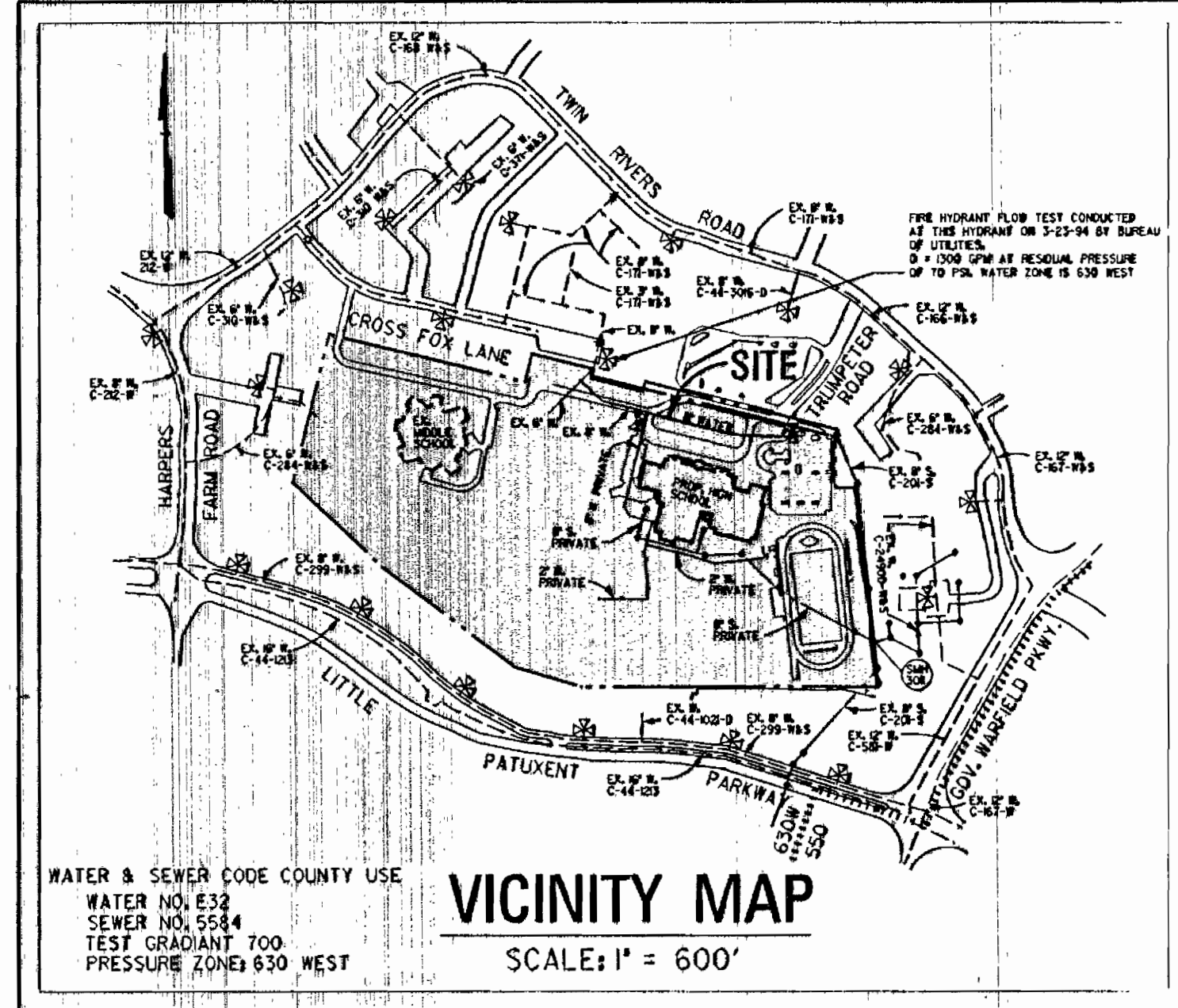
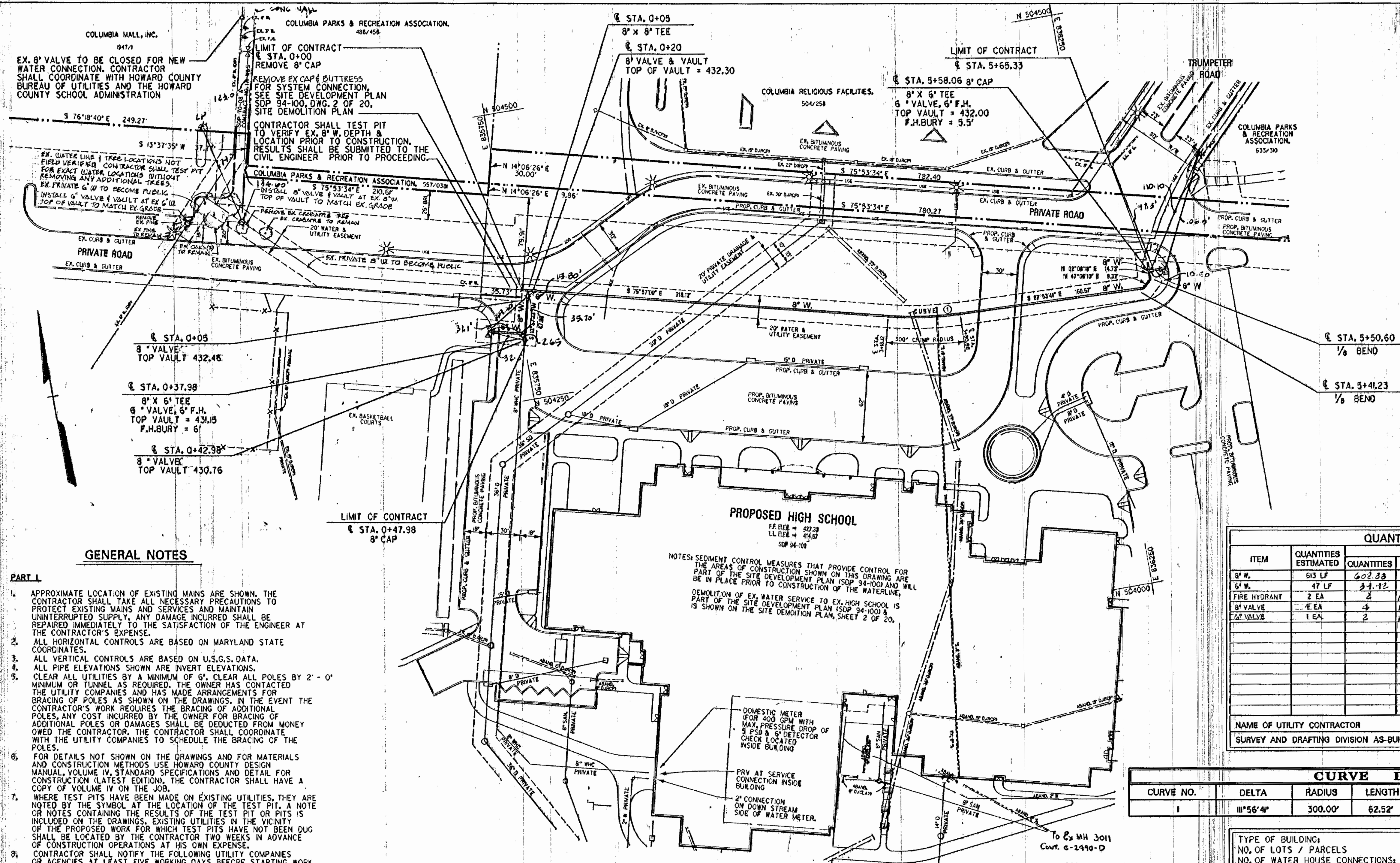


3353 1/2 V.W.L. / 1 Wilde Lake H.S.

AS-BUILT 1/27/95



GENERAL NOTES

- 1. APPROXIMATE LOCATION OF EXISTING MAINS ARE SHOWN. THE CONTRACTOR SHALL TAKE ALL NECESSARY PRECAUTIONS TO PROTECT EXISTING MAINS AND SERVICES AND MAINTAIN UNINTERRUPTED SUPPLY. ANY DAMAGE INCURRED SHALL BE REPAIRED IMMEDIATELY TO THE SATISFACTION OF THE ENGINEER AT THE CONTRACTOR'S EXPENSE.

- 1. ALL WATER MAINS TO BE D.I.P. CLASS 52 UNLESS OTHERWISE NOTED.

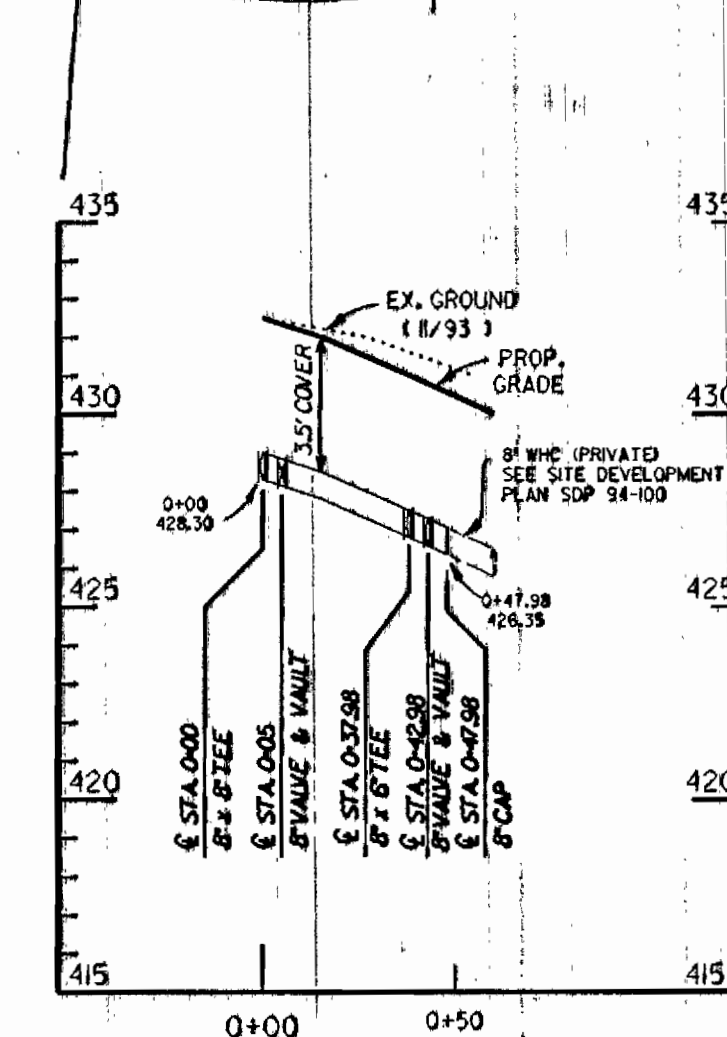
NOTES: SEDIMENT CONTROL MEASURES THAT PROVIDE CONTROL FOR THE AREAS OF CONSTRUCTION SHOWN ON THIS DRAWING ARE PART OF THE SITE DEVELOPMENT PLAN (SDP 94-100) AND WILL BE IN PLACE PRIOR TO CONSTRUCTION OF THE WATERLINE.

Table with columns: ITEM, QUANTITIES ESTIMATED, QUANTITIES AS-BUILT, TYPE, MANUFACTURER/SUPPLIER. Lists items like 8" W, 6" VALVE, and 4" VALVE.

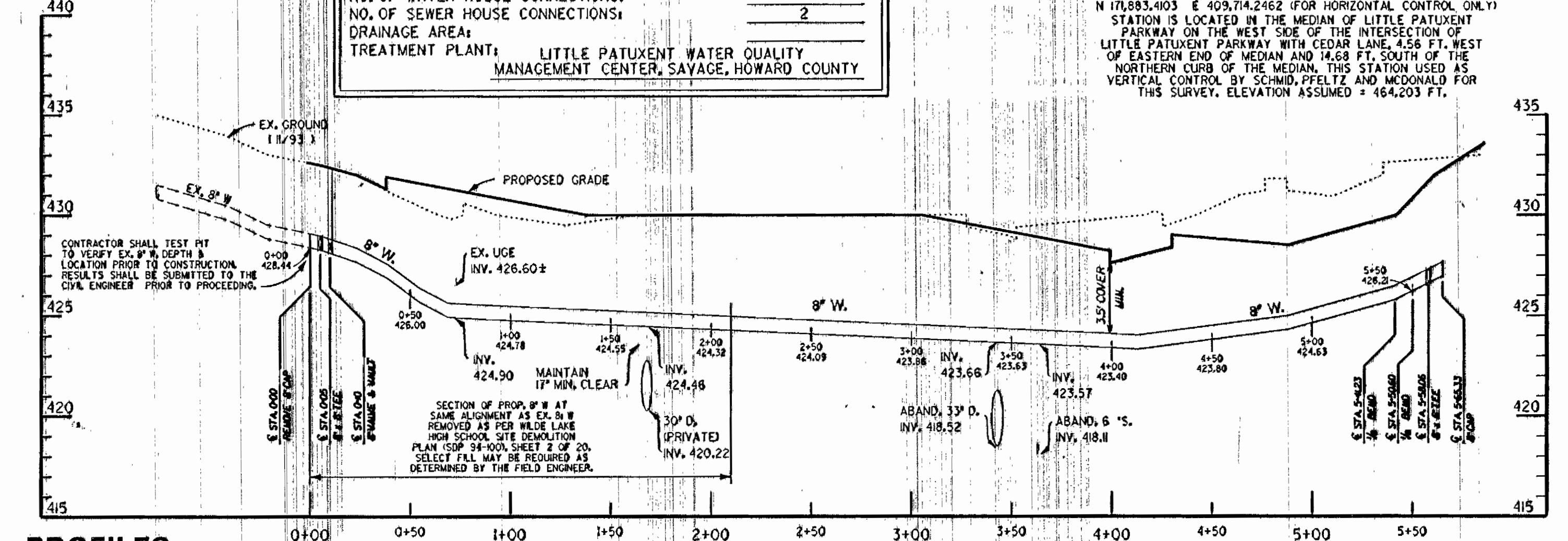
Table with columns: CURVE NO., DELTA, RADIUS, LENGTH, TANGENT, CHORD. Shows curve data for curve 1.

Table with columns: TYPE OF BUILDING, NO. OF LOTS / PARCELS, NO. OF WATER HOUSE CONNECTIONS, NO. OF SEWER HOUSE CONNECTIONS, DRAINAGE AREA, TREATMENT PLANT.

PLAN



PROFILES



REVIEWED FOR HOWARD SOIL CONSERVATION DISTRICT AND MEETS TECHNICAL REQUIREMENT. Signature: Patricia Engle, 6/3/94.

APPROVED HOWARD COUNTY DEPT. OF PUBLIC WORKS. Chief, Bureau of Highways, Chief, Bureau of Engineering, Chief, Land Development Division. Date: 6/6/94.

DEPARTMENT OF PUBLIC WORKS HOWARD COUNTY, MARYLAND. Director of Public Works - Date: 6/16/94. Chief - Bureau of Engineering - Date: 6/16/94. Chief - Bureau of Utilities - Date: 6/16/94. Chief - Land Development Division - Date: 6/16/94.

DMW Daft-McCune-Walker, Inc. A Team of Land Planners, 200 East Pennsylvania Avenue, Landscaping Architects, Engineers, Surveyors & Environmental Professionals. License No. 512594.



Table with columns: DESIGN BY, DRAWN BY, CHECKED BY, DATE, REVISION, DATE. Lists project personnel and revision history.

WATER PLAN & PROFILE. 600 SCALE MAP NO. 29. BLOCK NO. 24.

WILDE LAKE HIGH SCHOOL VILLAGE OF WILDE LAKE SECTION 11 AREA 1 PARCEL 280 LOT 1 5TH ELECTION DISTRICT CONTRACT NO. 44-3353-D. SCALE AS SHOWN. SHEET 1 OF 1.

AS-BUILT 1/27/95

3353 POSITION SHEET



Contract 44-3353-D.

HOWARD COUNTY
DEPARTMENT OF PUBLIC WORKS
BUREAU OF ENGINEERING
SURVEY & DRAFTING DIVISION

Scale : 1" = 50'
Map No. _____