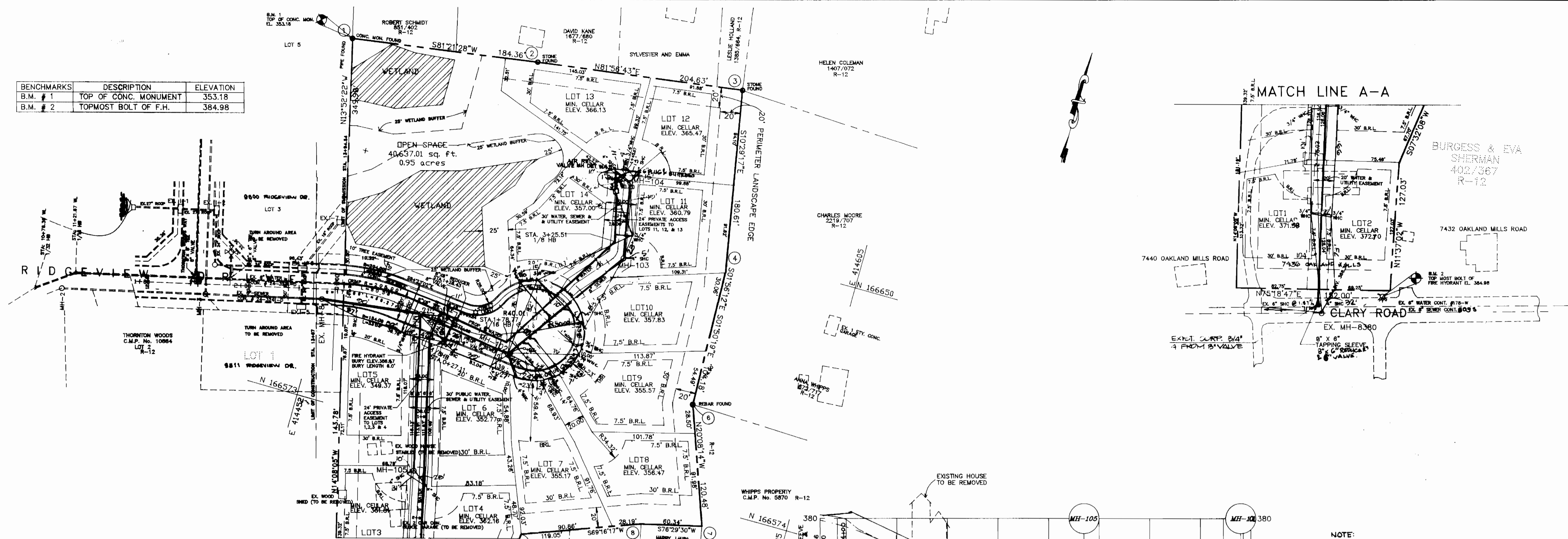
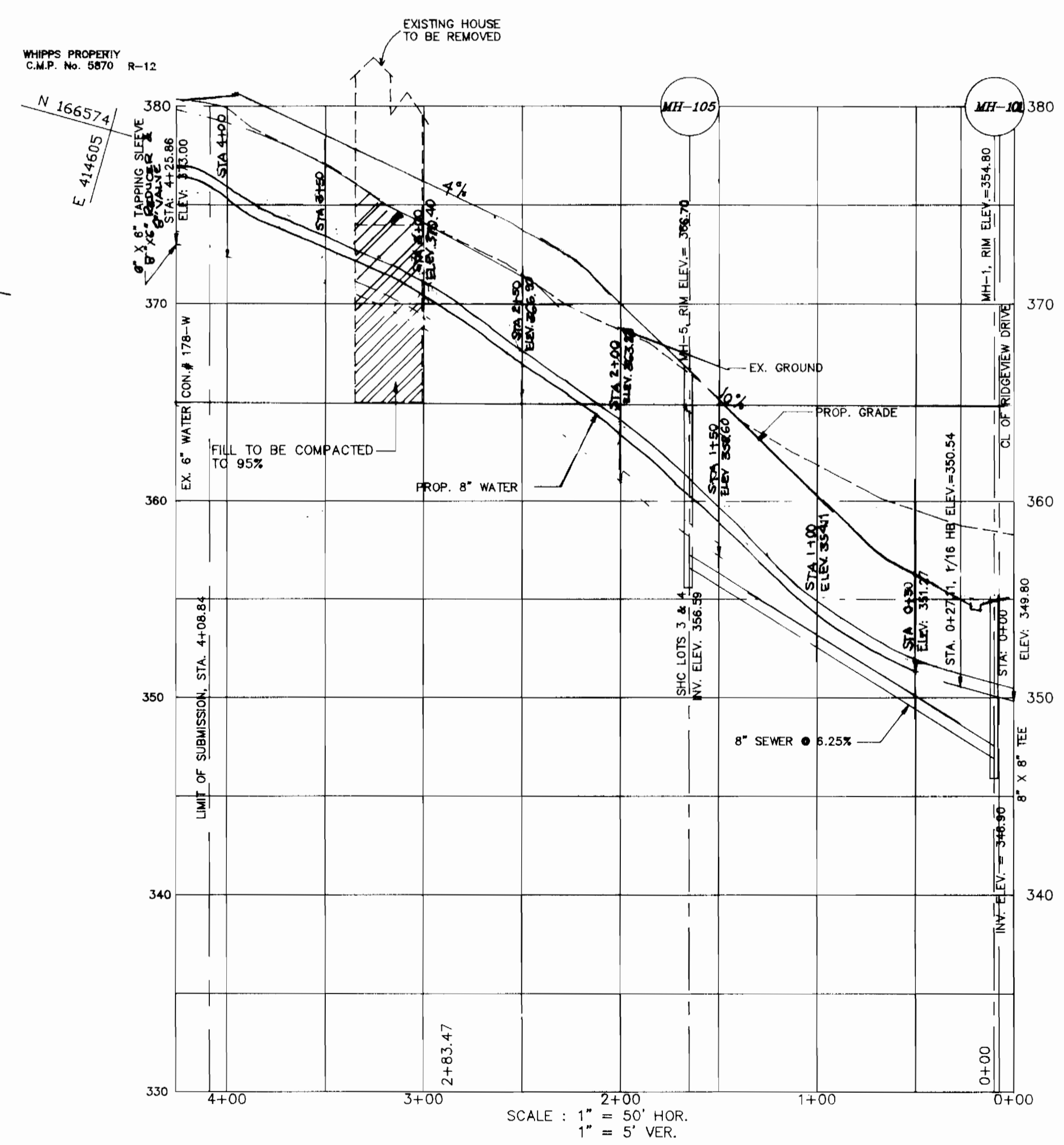
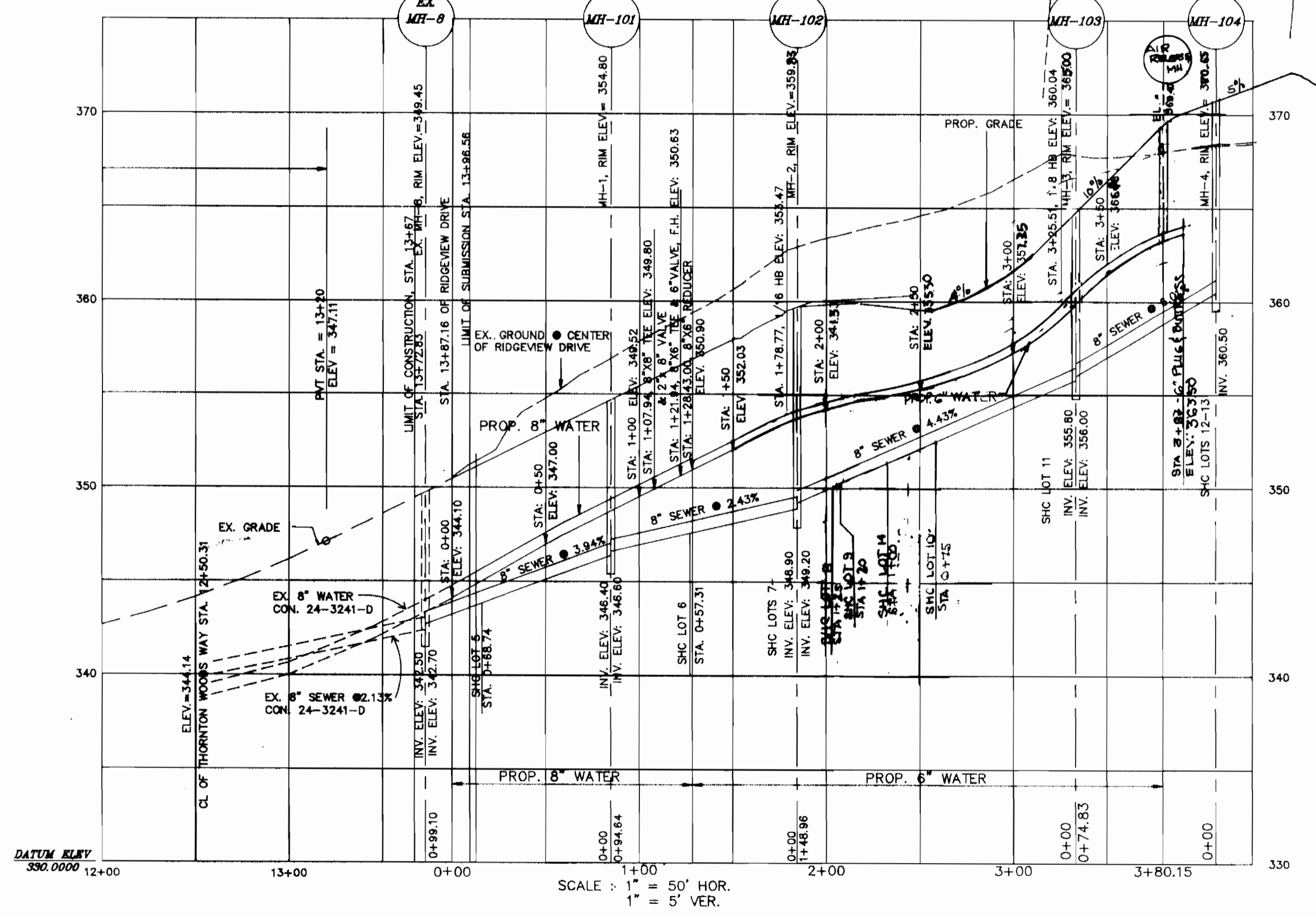


3351 ws/2 Ruppert Woods

BENCHMARK	DESCRIPTION	ELEVATION
B.M. # 1	TOP OF CONC. MONUMENT	353.18
B.M. # 2	TOPMOST BOLT OF F.H.	384.98



SEE MATCH LINE A-A OF THIS SHEET



NOTE:
 (a) WATER HOUSE CONNECTION IS NOT EXISTING FOR HOUSE AT 7432 OAKLAND MILLS ROAD. SEWER HOUSE CONNECTION IS EXISTING FROM GLARY ROAD, CONTRACT NO. 008-8.
 (b) THE EXISTING SEWER HOUSE CONNECTION WILL BE USED FOR LOT NO. 1.

LOT NO.	SHC EL. (AT PROPERTY LINE)
1	367.17
2	368.50
3	356.69
4	357.09
5	344.37
6	348.17
7	348.92
8	351.27
9	351.47
10	352.67
11	356.29
12	360.87
13	361.03
14	352.65

DEPARTMENT OF PUBLIC WORKS
 HOWARD COUNTY, MARYLAND

Coria Engineering Inc.
 CONSULTING ENGINEERS—LAND PLANNERS—SURVEYORS
 3230 BETHANY LANE, SUITE 4, ELLICOTT CITY, MD.
 410-465-0400



DES: JNC	
DRN: JER	
CHK: MLL	
DATE: 5/25/94	
BY: NC	
REVISION	

PLAN & PROFILE OF
 WATER & SEWER MAINS
 CONTRACT NO. 24-3351-D

RUPPERT WOODS
 LOTS 1 THRU 15
 TAX MAP 42 PARCEL 42 & 373
 6th ELECTION DISTRICT HOWARD COUNTY, MARYLAND

SCALE AS SHOWN
 SHEET 2 OF 2

