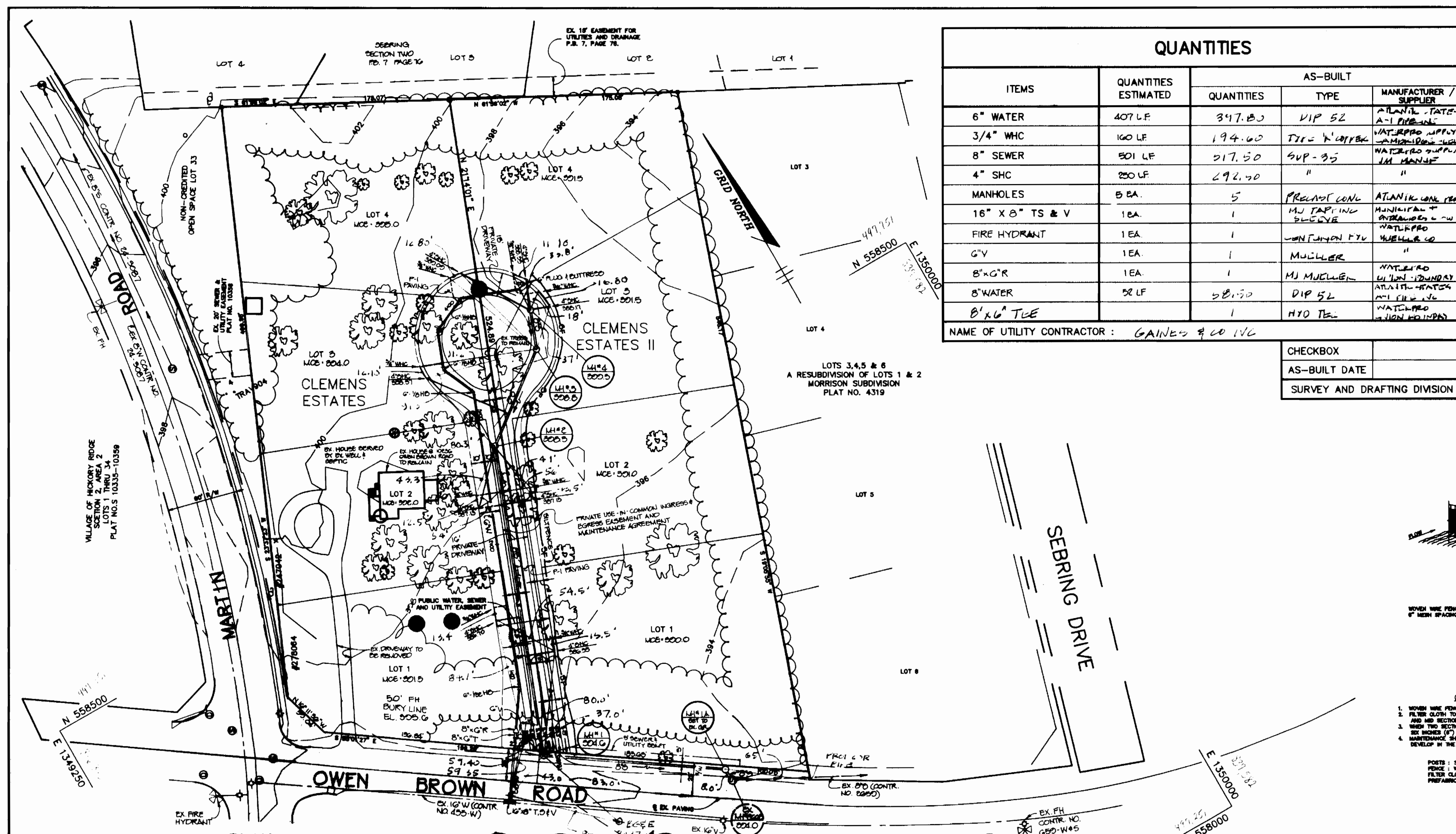


3349 ws/1 Clemens Estates / Clemens Estates II AS-BUILT 11/14/94



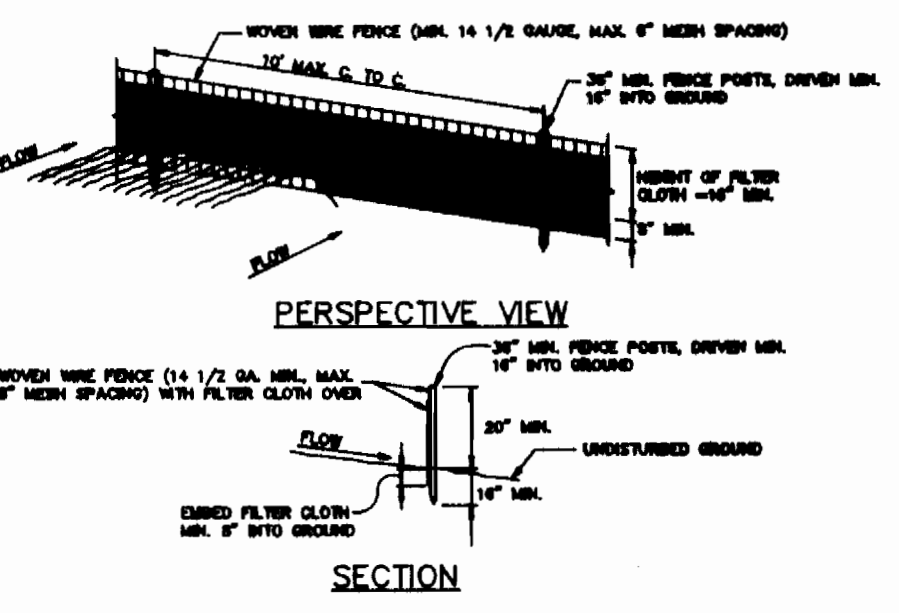
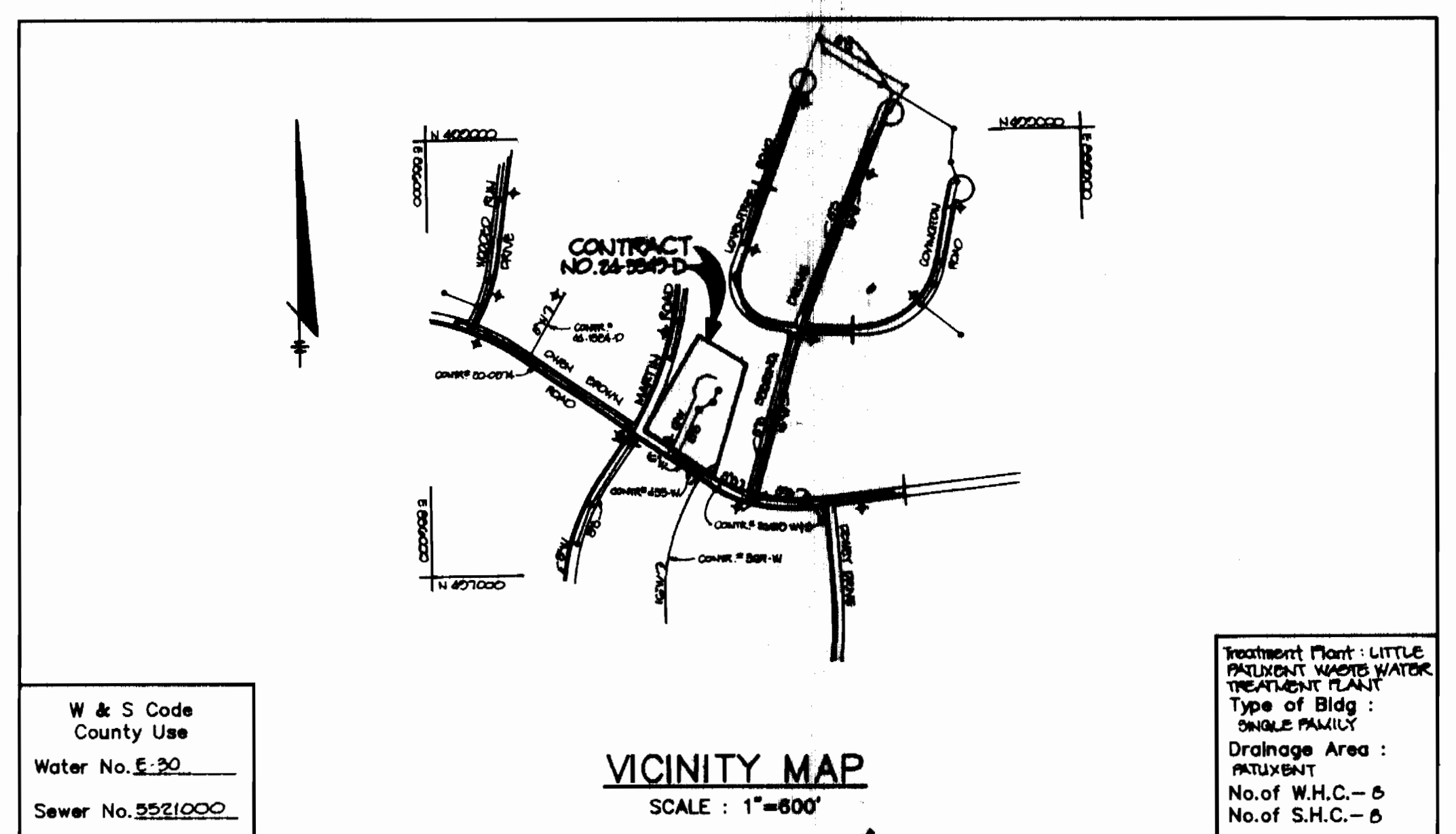
ITEMS	QUANTITIES ESTIMATED	AS-BUILT		
		QUANTITIES	TYPE	MANUFACTURER / SUPPLIER
6" WATER	407 LF	397.00	VIP 52	ATLANTIC STATES A-1 PIPEWORK
3/4" WHC	100 LF	194.00	DIP 52	ATLANTIC STATES A-1 PIPEWORK
8" SEWER	501 LF	517.50	SUP-35	WATERPRO SUPPLY
4" SHC	250 LF	292.00	"	"
MANHOLES	5 EA.	5	PRECAST CONC	ATLANTIC CONC PROD
16" X 8" TS & V	1 EA.	1	MU TAPPING	MUNICIPAL
FIRE HYDRANT	1 EA.	1	CONCRETE	WATERPRO
G.V.	1 EA.	1	MULLER	"
8" G.R.	1 EA.	1	MJ MULLER	WATERPRO
8" WATER	52 LF	58.00	DIP 52	ATLANTIC STATES A-1 PIPEWORK
8" X 6" TEE	1	1	H2O TEE	WATERPRO

NAME OF UTILITY CONTRACTOR: GAINES & CO INC

CHECKBOX

AS-BUILT DATE

SURVEY AND DRAFTING DIVISION



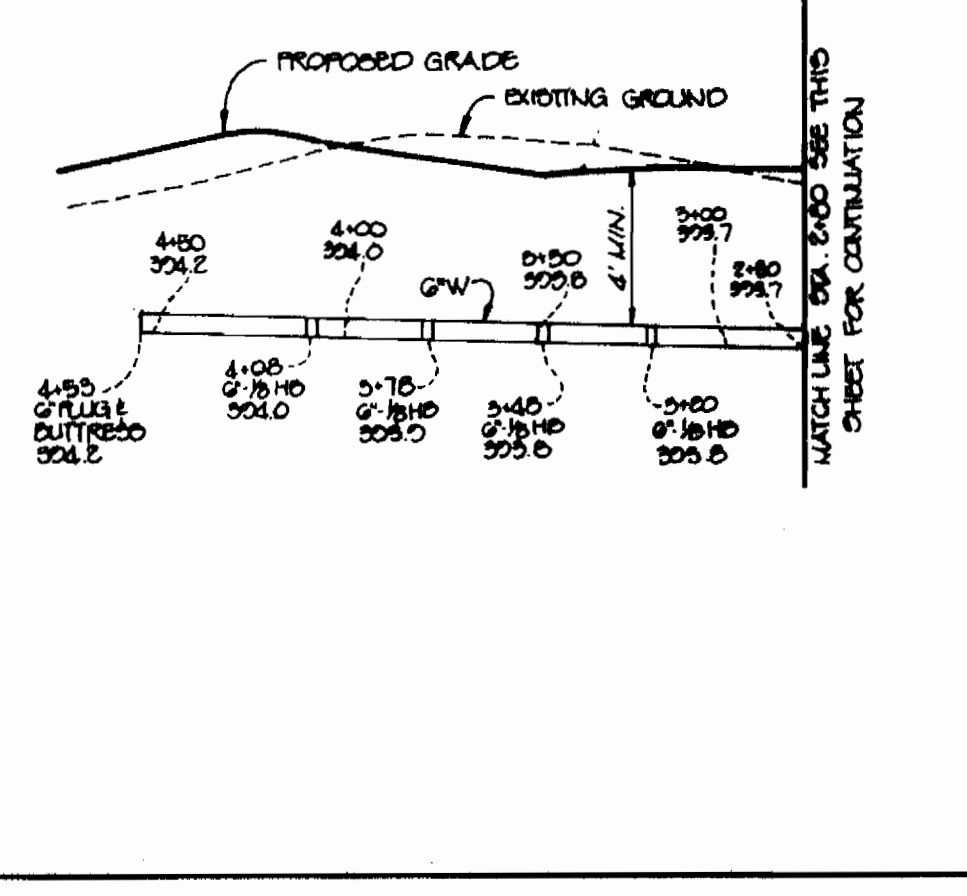
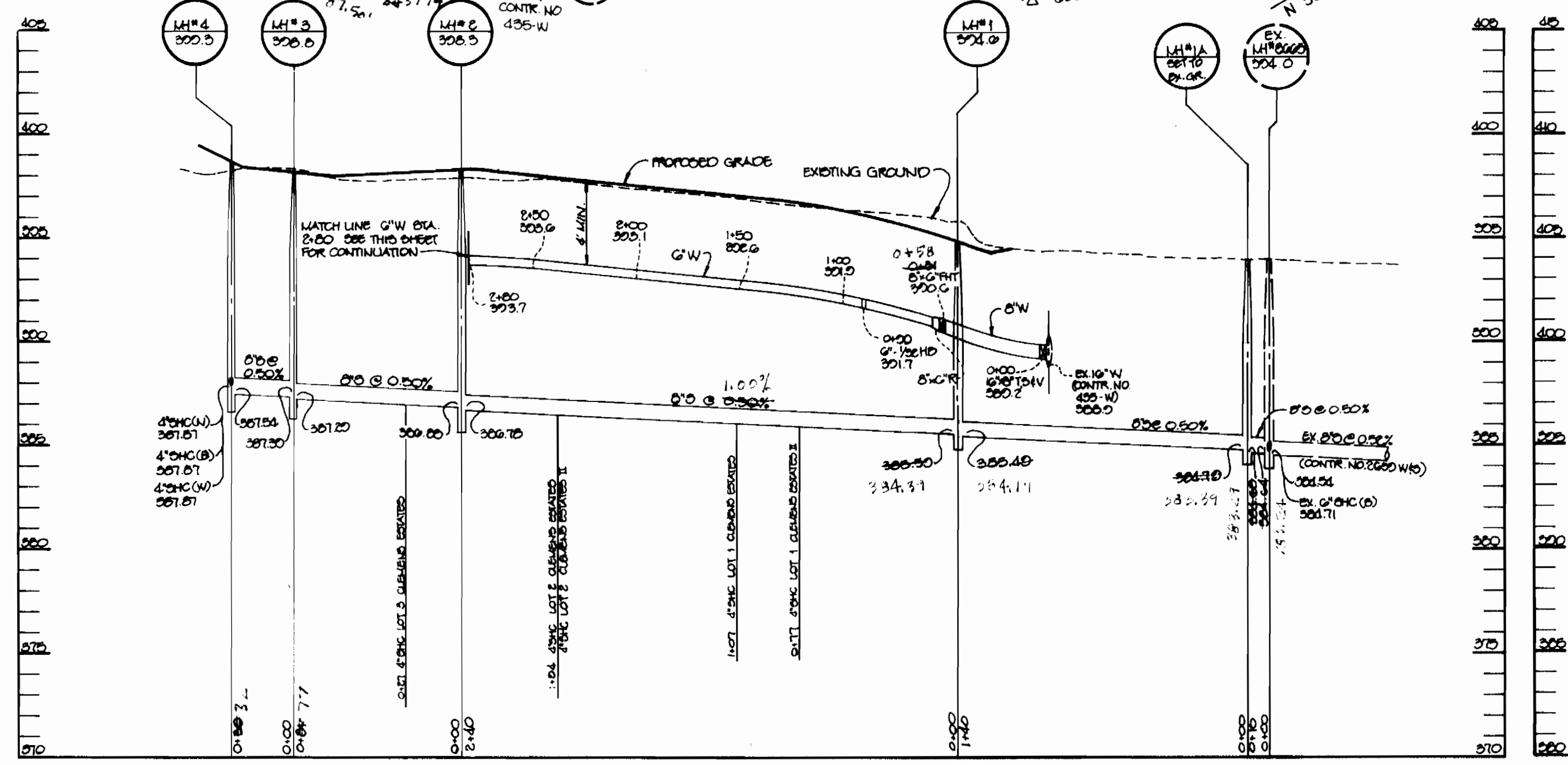
CONSTRUCTION NOTES FOR FABRICATED SILT FENCE

1. SLOTTED SILT FENCE TO BE FASTENED TO FENCE POSTS WITH WIRE TIE AND STAPLES.
2. FILTER CLOTH TO BE FASTENED TO SLOTTED SILT FENCE WITH WIRE SPACED EVERY 24" AT TOP AND BOTTOM.
3. USE TWO SECTIONS OF FILTER CLOTH ALONG EACH OTHER. THEY SHALL BE OVERLAPPED BY 6" BOWED UP AND TOLDED.
4. SLOTTED SILT FENCE SHALL BE PERFORMED AS SHOWN AND MATERIAL REQUIRED WHEN "BOWLED" DEVELOPED IN THE SILT FENCE.

NOTE: STEEL, EIGHT (8) IN. TYPE OR 1/2" HANGDOWN FENCE: SLOTTED SILT FENCE, 14 IN. MAX. HANGDOWN. FILTER CLOTH: 1/2" SLOTTED, STAPLED, TYPED OR APPROVED EQUAL. FABRICATED UNIT: GEOTEX, ENVIRONMENTAL, OR APPROVED EQUAL.

SILT FENCE DETAIL  
NO SCALE

- GENERAL NOTES**
1. Approximate location of existing mains are shown. The contractor shall take all necessary precautions to protect existing mains and services and maintain utility functioning properly. Any damage incurred shall be repaired immediately to the satisfaction of the Engineer at the Contractor's expense.
  2. All horizontal controls are based on Maryland State Coordinates.
  3. All vertical controls are based on U.S.G.S. data.
  4. All pipe elevations shown are invert elevations.
  5. Clear all utilities by a minimum of 6". Clear all poles by 2'-0" minimum or tunnel as required. The owner has contacted the utility companies and has made arrangements for bracing of poles as shown on the drawings. In the event the contractor's work requires the bracing of additional poles, any cost incurred by the owner for bracing of additional poles or damages shall be deducted from money owed the contractor. The contractor shall coordinate with the utility companies to schedule the bracing of the poles.
  6. For details not shown on the drawings, and for materials and construction methods use Howard County Design Manual, Volume IV, Standard Specifications and Detail for Construction. (Latest Edition). The contractor shall have a copy of Volume IV on the job.
  7. Where test pits have been made on existing utilities, they are noted by the symbol at the location of the test pit. A note or notes containing the results of the test pit or pits is included on the drawings. Existing utilities in the vicinity of the proposed work for which test pits have not been dug shall be located by the contractor two weeks in advance of construction operations at his own expense.
  8. Contractor shall notify the following utility companies or agencies at least five working days before starting work shown on these plans:
    - State Highway Administration 531-5533
    - Baltimore Gas & Electric Co. Contractor Services 850-4820
    - Baltimore Gas & Electric Co. Underground Damage Control 787-9058
    - Mesa Utility 1-800-257-7777
    - Colonial Pipeline Co. 785-1380
    - Bureau of Utilities, Howard County Department of Public Works 313-4900
  9. Trees and shrubs are to be protected from damage to maximum extent. Trees and shrubs located within the construction strip are not to be removed or damaged by the contractor.
  10. Contractor shall remove trees, stumps and roots along line of excavation. Payment for such removal shall be included in the unit price bid for construction of the main.
  11. All water mains to be D.I.P. Class 52 unless otherwise noted.
  12. Top of all water mains to have a minimum of 3'-1/2' cover unless otherwise noted.
  13. Valves adjacent to tees shall be strapped to tees.
  14. All fittings shall be buttressed or anchored with concrete in accordance with the Standard Details unless otherwise provided for on the drawings.
  15. Fire hydrants shall be set to the bury line elevations shown on the drawings. All fire hydrants shall be restrained and buttressed with concrete in accordance with Standard Details. Soil around the fire hydrant shall be compacted in accordance with Section 1000 and 1005 of the Standard Specifications.
  16. The contractor shall not operate any water main valves on the existing water system.
  17. All water house connections shall be for inside meter setting unless otherwise noted on plans or in specifications.
  18. All sewer mains shall be DIP, RCP, VCPX, CSPX, RCCP and P.V.C. unless otherwise noted.
  19. All manholes shall be 4'-0" inside diameter unless otherwise noted.
  20. Force mains shall be D.I.P. only.
  21. Manholes shown with 12" and 16" walls are for brick manholes only.
  22. Manholes designated W.T. in plan and profile shall have watertight frame and covers, Standard Detail 05.52. Where watertight manhole frame and cover is used, set top of frame 1'-0" above finished grade unless otherwise noted on the drawings.
  23. House(s) with the symbol "C.N.S." indicates that cellar cannot be served.
  24. Manholes can be either brick or precast concrete structures.
  25. Contractor to maintain one lane of traffic at all times on Owen Brown Road. Restoration of paving to conform with Howard County std. details @ 4.0' x 1' R. 201.



Sediment control measures for this contract will be implemented in accordance with Section 219 of the Specifications. F-94-89 & F-94-90

Review for Howard Soil Conservation District and meets technical requirements.

*J. A. Washfield* 7/4/94  
S.S. SOIL CONSERVATION SERVICE DATE

This plan is approved for soil erosion and sediment control by the Howard Soil Conservation District.

*John R. Robertson* 7/14/94  
HOWARD SOIL CONSERVATION DISTRICT DATE

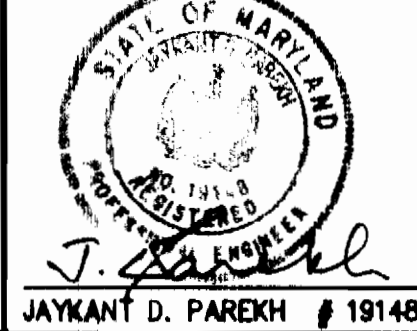
DEPARTMENT OF PUBLIC WORKS  
HOWARD COUNTY, MARYLAND

*James J. Shaw* 7/5/94  
DIRECTOR OF PUBLIC WORKS DATE

*John A. Robertson* 7/14/94  
CHIEF, BUREAU OF UTILITIES DATE

*John A. Robertson* 7/14/94  
CHIEF, LAND DEVELOPMENT DATE

RIEMER MUEGGE & ASSOCIATES, INC.  
Planners Engineers Surveyors  
8810 Centre Park Drive Suite 200 Columbia, MD 21046  
410-997-8900 FAX: 410-997-8908



DES: RWR			
DRN: WAD			
CHK: GJR			
DATE: 0-17-04	BY: WAD	NO. 1	REV. SEWER LAYOUT, ADDED M4#1A
			DATE: 0-23-04

PLAN AND PROFILE OF A WATER AND SEWER MAIN

600' SCALE MAP NO. 38 BLOCK NO. 15

CLEMENS ESTATES LOTS 1-4 AND CLEMENS ESTATES II LOTS 1-4  
5th ELECTION DISTRICT  
HOWARD COUNTY, MARYLAND  
CONTRACT NO. 24-3349-D

SCALE AS SHOWN  
SHEET 1 OF 1

AS-BUILT 11/14/94