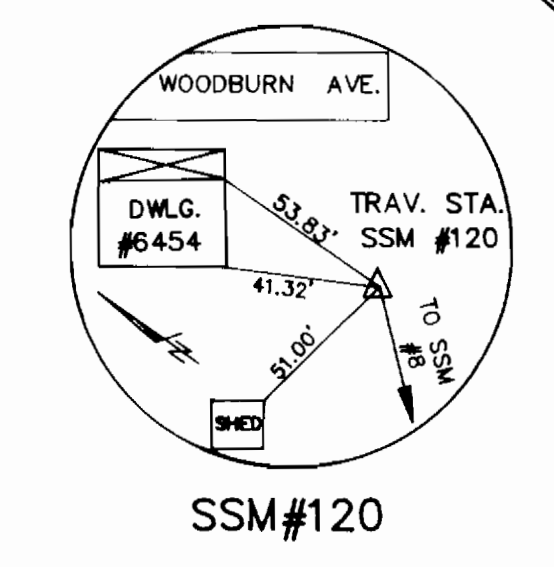


3347 WS/1 WOODBURN AVE. SEWER, C.P.# S-6183

GENERAL NOTES

- 1. APPROXIMATE LOCATION OF EXISTING MAINS ARE SHOWN...
2. ALL HORIZONTAL CONTROLS ARE BASED ON MARYLAND STATE COORDINATES.
3. ALL VERTICAL CONTROLS ARE BASED ON U.S.G.S. DATA.
...
17. HOUSE(S) WITH THE SYMBOL "C.N.S." INDICATES THAT CELLAR CANNOT BE SERVED.



NOTE: THE COORDINATES SHOWN HEREON ARE BASED ON VALUES ESTABLISHED BY HOWARD COUNTY, MARYLAND FOR THE FOLLOWING TRAVERSE STATIONS:

TRAVERSE SURVEY CONTROL

- 1. HOWARD COUNTY STATION 38D6
STAMPED CONC. MON., ROUTE 1
NORTH(83): 557,155.4598 (FT.)
EAST (83): 1,384,992.2550 (FT.)
ELEV. : 174.54
...
5. SSM #120
HUB W/TACK
NORTH(83): 555,149.4847
EAST (83): 1,386,591.3100
ELEV. : 88.89

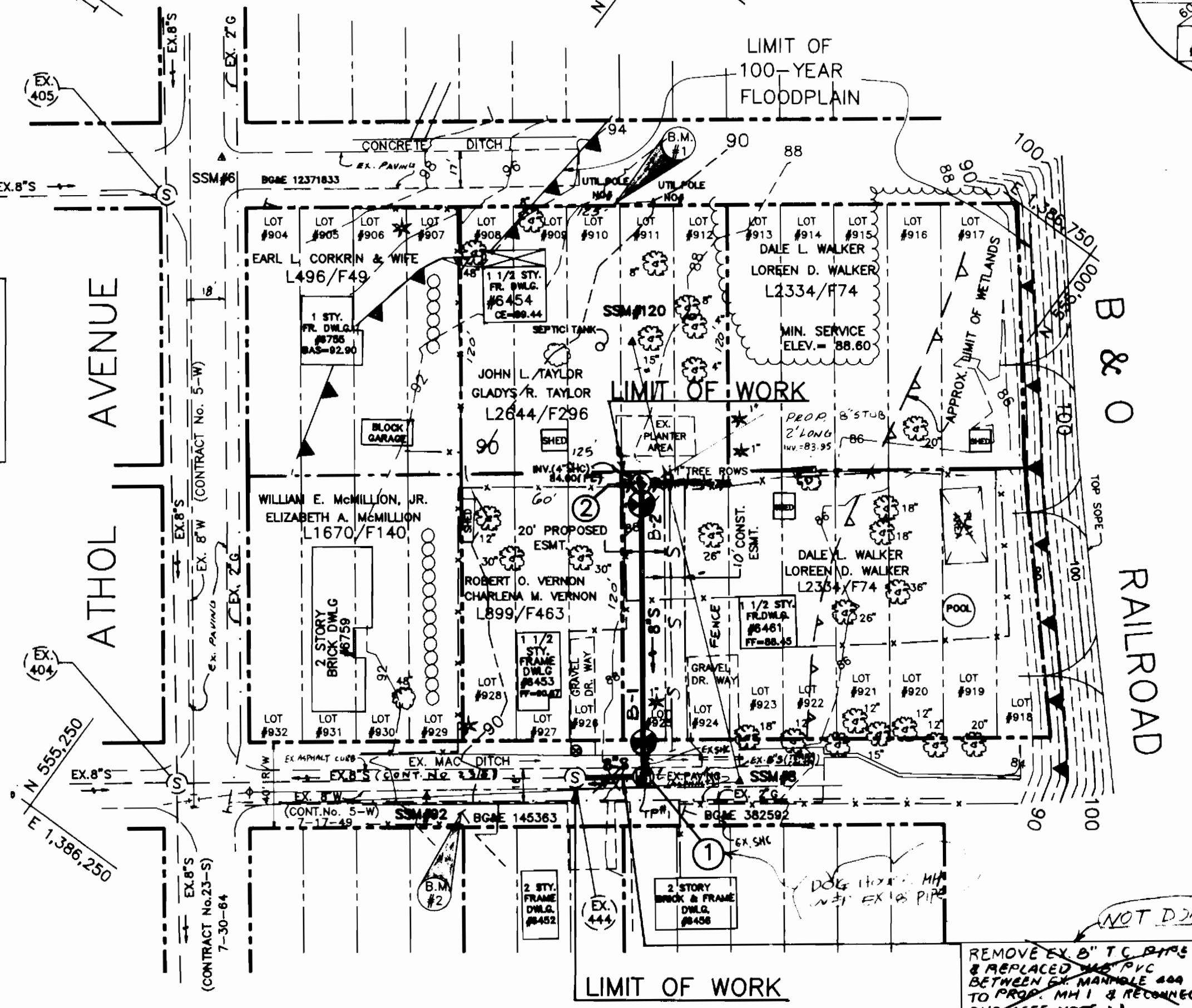
PERMANENT SEEDING NOTES

APPLY TO GRADED OR CLEARED AREAS NOT SUBJECT TO IMMEDIATE FURTHER DISTURBANCE WHERE A PERMANENT LONG-LIVED VEGETATIVE COVER IS NEEDED.
SEEDBED PREPARATION: LOOSEN UPPER THREE INCHES OF SOIL BY RAKING, DISKING OR OTHER ACCEPTABLE MEANS BEFORE SEEDING, IF NOT PREVIOUSLY LOOSENED.
...
MAINTENANCE - INSPECT ALL SEEDED AREAS AND MAKE NEEDED REPAIRS, REPLACEMENTS AND RESEEDINGS.

TEMPORARY SEEDING NOTES

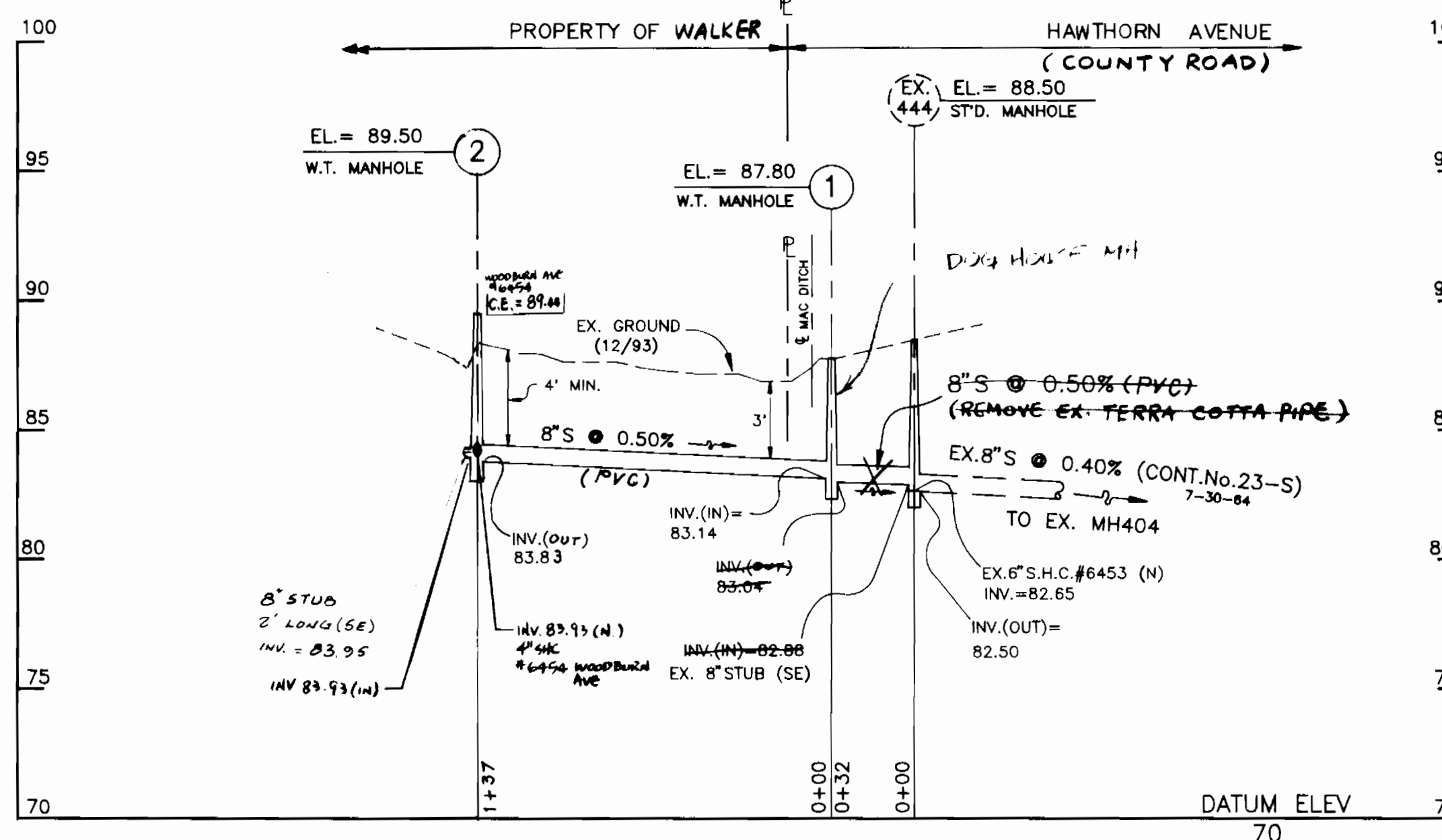
APPLY TO GRADED OR CLEARED AREAS LIKELY TO BE REDISTURBED WHERE A SHORT-TERM VEGETATIVE COVER IS NEEDED.
SEEDBED PREPARATION: LOOSEN UPPER THREE INCHES OF SOIL BY RAKING, DISKING OR OTHER ACCEPTABLE MEANS BEFORE SEEDING, IF NOT PREVIOUSLY LOOSENED.
...
REFER TO THE 1991 MARYLAND STANDARDS AND SPECIFICATIONS FOR SOIL EROSION AND SEDIMENT CONTROL FOR RATE AND METHODS NOT COVERED.

WOODBURN AVENUE



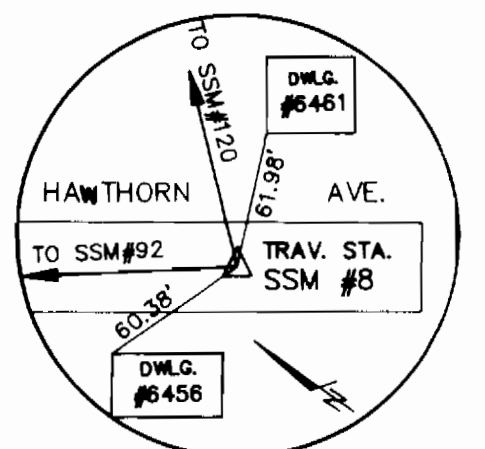
HAWTHORN AVENUE (COUNTY ROAD)

SCALE: 1" = 50'

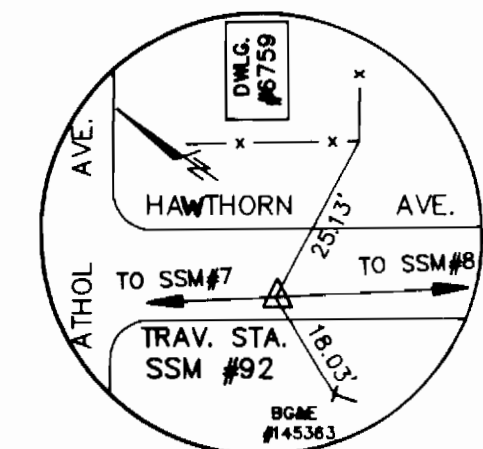


PROFILE

SCALE: HORIZ.: 1" = 50' VERT.: 1" = 5'



SSM#8



SSM#92

TEST PIT #: JULY 5, 1994
GROUND ELEV. = 88.04
TOP OF EX. 8"S = 84.14

COORDINATE TABLE

Table with columns: MANHOLE, N, E. Values for MH-1 and MH-2.

STAKEOUT SCHEDULE

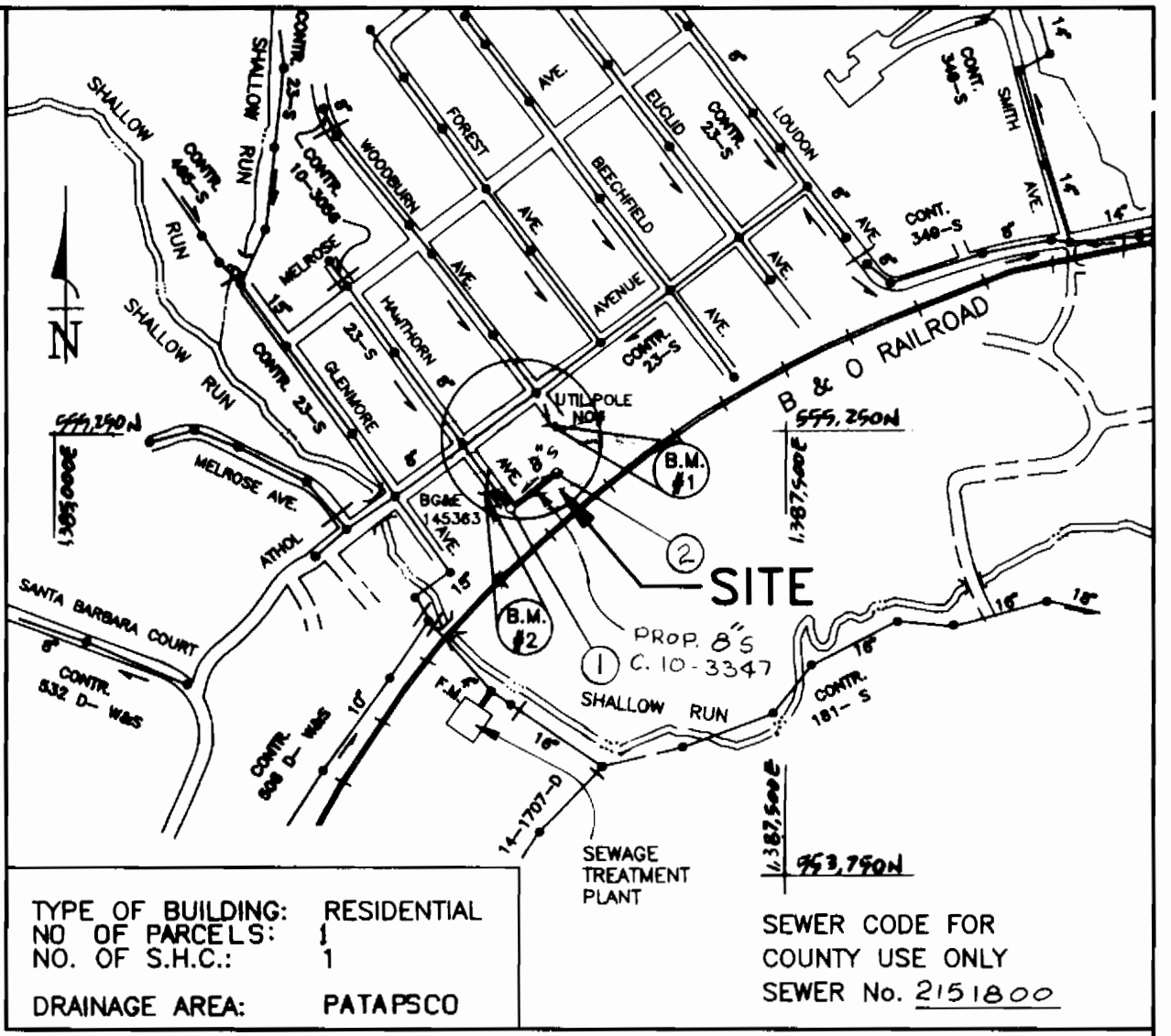
Table with columns: MANHOLE, DISTANCE, OFFSET. Values for MH-1 and MH-2.

BENCH MARKS

- BM1: R.R.SPIKE IN UTILITY POLE #0 #M AT WOODBURN AVE. ±190' S.W. OF ATHOL AVENUE (1.90' ABOVE GROUND). ELEV.= 93.16
BM2: R.R.SPIKE IN BG&E POLE #145363 AT HAWTHORN AVE. ±120' S.W. OF ATHOL AVENUE (1.30' ABOVE GROUND). ELEV.= 91.66

NOTE:

- 1. RECONNECT EX. S.H.C. (#6461 & #6456) FROM EX. MH #444 TO PROPOSED MH-1.
2. CONTRACTOR TO RE-ESTABLISH EX. SWALE NEAR MH#2 AFTER CONSTRUCTION.
3. FLOW MUST BE MAINTAINED AT ALL TIMES.



VICINITY MAP

SCALE: 1" = 600'

TYPE OF BUILDING: RESIDENTIAL
NO. OF PARCELS: 1
DRAINAGE AREA: PATAPASCO
SEWER CODE FOR COUNTY USE ONLY
SEWER No. 2151600

RESTORATION SCHEDULE

Table with columns: LOCATION, DISTANCE, TYPE. Details restoration for asphalt paving and seeding.

QUANTITIES

Table with columns: ITEM, UNIT, ESTIMATE, AS-BUILT, MATERIAL SUPPLIER. Lists quantities for sewer pipe, manholes, and bedding.

SEQUENCE OF CONSTRUCTION

- 1. CONTACT HOWARD COUNTY DIVISION OF CONSTRUCTION INSPECTION DIVISION (313-1870) PRIOR TO STARTING DATE.
2. INSTALL EROSION AND SEDIMENT CONTROL DEVICES AS PER SECTION 219 OF THE HOWARD COUNTY DESIGN MANUAL VOL. IV.
3. EXCAVATE AND INSTALL PROPOSED 8" SEWER MAIN AND 4" S.H.C.
4. RESTORE PAVING AND EARTH TRENCHES TO THEIR ORIGINAL CONDITION AS PER HOWARD COUNTY STANDARDS.
5. UPON PERMISSION FROM HOWARD COUNTY SEDIMENT CONTROL INSPECTOR, REMOVE SEDIMENT CONTROL DEVICES.
6. FINE GRADE ALL DISTURBED AREAS AND STABILIZE WITH PERMANENT SEEDING.

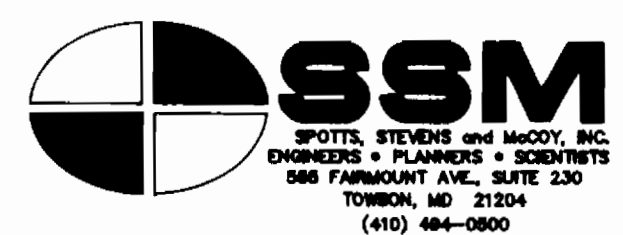
DEVELOPER'S CERTIFICATION

Certification text for the developer and engineer, including dates and signatures.

DEPARTMENT OF PUBLIC WORKS

HOWARD COUNTY, MARYLAND

Signatures and dates for Director of Public Works and Chief, Bureau of Utilities.



Revision table with columns: DES, DRN, CHK, DATE, BY, NO., REVISION.

8-INCH SEWER MAIN
NOTES & DETAILS
600' SCALE MAP NO. S-38 BLOCK NO. 19

WOODBURN AVENUE SEWER
CAPITAL PROJECT: S-6183
ELECTION DISTRICT: 1
CONTRACT No.: 10-3347

SCALE AS SHOWN
SHEET 1 OF 1
FILE NAME: C:\DWG\5684-011\BOO 61