

WATER HOUSE CONNECTION		
LOT NO.	Q. STATION	ROAD
1	25+28.34	MARYLAND ROUTE 216/ SCAGGSVILLE ROAD
2-3	24+19.27	
4	SEE PLAN FOR DIM.	
5	20+76.74	
6-7	18+99.91	
8-9	16+76.71	
10	15+33.30	

SEWER HOUSE CONNECTION		
LOT NO.	Q. STATION	ROAD
1-2	25+05.07	MARYLAND ROUTE 216/ SCAGGSVILLE ROAD
3-4	SEE PLAN FOR DIM.	
5-6	20+08.34	
7-8	17+93.77	
9-10	15+59.24	

BENCH MARKS (NAD 27)
 HO.CO. #2038001 ELEV. 435.688
 CONC. MONUMENT 23'± NORTH OF NORTH
 EDGE SCAGGSVILLE ROAD 0.3' BELOW SURFACE.
 N 478311.283 E 826786.508

HO.CO. #2039001 ELEV. 447.251
 CONC. MONUMENT 0.1' BELOW SURFACE.
 N 477814.342 E 828108.318

BENCH MARKS (NAD 83)
 HO.CO. #468A
 CONC. MONUMENT OFF OF SHOULDER ON NORTH
 BOUND ROUTE 29, 0.15 MILES SOUTH OF
 ROUTE 216, 32.4' WEST OF C&P POLE #6, G&E #219814
 N 537545.8402(FT) E 1339849.069(FT)
 N 163844.2998(M) E 408386.8130

HO.CO. #468B
 CONC. MONUMENT IN GRASS MEDIAN WEST OF
 INTERSECTION OF MD ROUTE 29 AND OLD COLUMBIA
 ROAD, 5' OFF EDGE OF CURB.
 N 535610.7155(FT) E 1337927.633(FT)
 N 163254.4728(M) E 407801.1581(M)

GENERAL NOTES

- APPROXIMATE LOCATION OF EXISTING MAINS ARE SHOWN. THE CONTRACTOR SHALL TAKE ALL NECESSARY PRECAUTIONS TO PROTECT EXISTING MAINS AND SERVICES AND MAINTAIN UNINTERRUPTED SUPPLY. ANY DAMAGE INCURRED SHALL BE REPAIRED IMMEDIATELY TO THE SATISFACTION OF THE ENGINEER AT THE CONTRACTOR'S EXPENSE.
- ALL HORIZONTAL CONTROLS ARE BASED ON MARYLAND STATE COORDINATES.
- ALL VERTICAL CONTROLS ARE BASED ON U.S.C.G. DATA.
- ALL PIPE ELEVATIONS SHOWN ARE INVERT ELEVATIONS.
- CLEAR ALL UTILITIES BY A MINIMUM OF 6". CLEAR ALL POLES BY 2'-0" MINIMUM OR TUNNEL AS REQUIRED. THE OWNER HAS CONTACTED THE UTILITY COMPANIES AND HAS MADE ARRANGEMENTS FOR BRACING OF POLES AS SHOWN ON THE DRAWINGS. IN THE EVENT THE CONTRACTOR'S WORK REQUIRES THE BRACING OF ADDITIONAL POLES, ANY COST INCURRED BY THE OWNER FOR THE BRACING OF ADDITIONAL POLES OR DAMAGES SHALL BE DEDUCTED FROM MONEY OWED THE CONTRACTOR. THE CONTRACTOR SHALL COORDINATE WITH THE UTILITY COMPANIES TO SCHEDULE THE BRACING OF THE POLES.
- FOR DETAILS NOT SHOWN ON THE DRAWINGS, AND FOR MATERIALS AND CONSTRUCTION METHODS, USE HOWARD COUNTY DESIGN MANUAL VOLUME IV, STANDARD SPECIFICATIONS AND DETAIL FOR CONSTRUCTION. THE CONTRACTOR SHALL HAVE A COPY OF VOLUME IV ON THE JOB.
- WHERE TEST PITS HAVE BEEN MADE ON EXISTING UTILITIES, THEY ARE NOTED BY THE SYMBOL AT THE LOCATION OF THE TEST PIT. A NOTE OR NOTES CONTAINING THE RESULTS OF THE TEST PIT OR PITS IS INCLUDED ON THE DRAWINGS. EXISTING UTILITIES IN THE VICINITY OF THE PROPOSED WORK FOR WHICH TEST PITS HAVE NOT BEEN DUG SHALL BE LOCATED BY THE CONTRACTOR TWO WEEKS IN ADVANCE OF CONSTRUCTION OPERATIONS AT HIS OWN EXPENSE.
- CONTRACTOR SHALL NOTIFY THE FOLLOWING UTILITY COMPANIES OR AGENCIES AT LEAST FIVE WORKING DAYS BEFORE STARTING WORK SHOWN ON THESE PLANS:
 - STATE HIGHWAY ADMINISTRATION.....531-5533
 - BALTIMORE GAS & ELECTRIC CO.850-4620
 - BALTIMORE GAS & ELECTRIC CO.850-4620
 - UNDERGROUND DAMAGE CONTROL.....787-9068
 - MISS UTILITY.....1-800-257-7777
 - COLONIAL PIPELINE CO.....795-1390
 - BUREAU OF UTILITIES.....
 - HOWARD CO. DEPT. OF PUBLIC WORKS.....313-4900
- TREES AND SHRUBS ARE TO BE PROTECTED FROM DAMAGE TO MAXIMUM EXTENT. TREES AND SHRUBS LOCATED WITHIN THE CONSTRUCTION STRIP ARE NOT TO BE REMOVED OR DAMAGED BY THE CONTRACTOR.
- CONTRACTOR SHALL REMOVE TREES, STUMPS AND ROOTS ALONG LINE OF EXCAVATION. PAYMENT FOR SUCH REMOVAL SHALL BE INCLUDED IN THE UNIT PRICE BID FOR CONSTRUCTION OF THE MAIN.
- PLACE REGULATION "MEN WORKING" AND WARNING SIGNS AS REQUIRED TO COMPLY WITH MARYLAND STATE HIGHWAY ADMINISTRATION MANUAL OF TRAFFIC CONTROL FOR HIGHWAY MAINTENANCE OPERATIONS.
- THE CONTRACTOR SHALL NOTIFY THE BUREAU OF HIGHWAYS, HOWARD COUNTY, AT (410) 313-2450 AT LEAST FIVE WORKING DAYS BEFORE ANY OPEN CUT OF ANY COUNTY ROAD OR BORING/JACKING OPERATION IN COUNTY ROADS FOR LAYING WATER/SEWER MAINS OR HOUSE CONNECTIONS. THE APPROVAL OF THESE DRAWINGS CONSTITUTE COMPLIANCE WITH DPW REQUIREMENTS PER SECTION 18.114(c) OF THE HOWARD COUNTY CODE.

GENERAL NOTES CONTINUED...

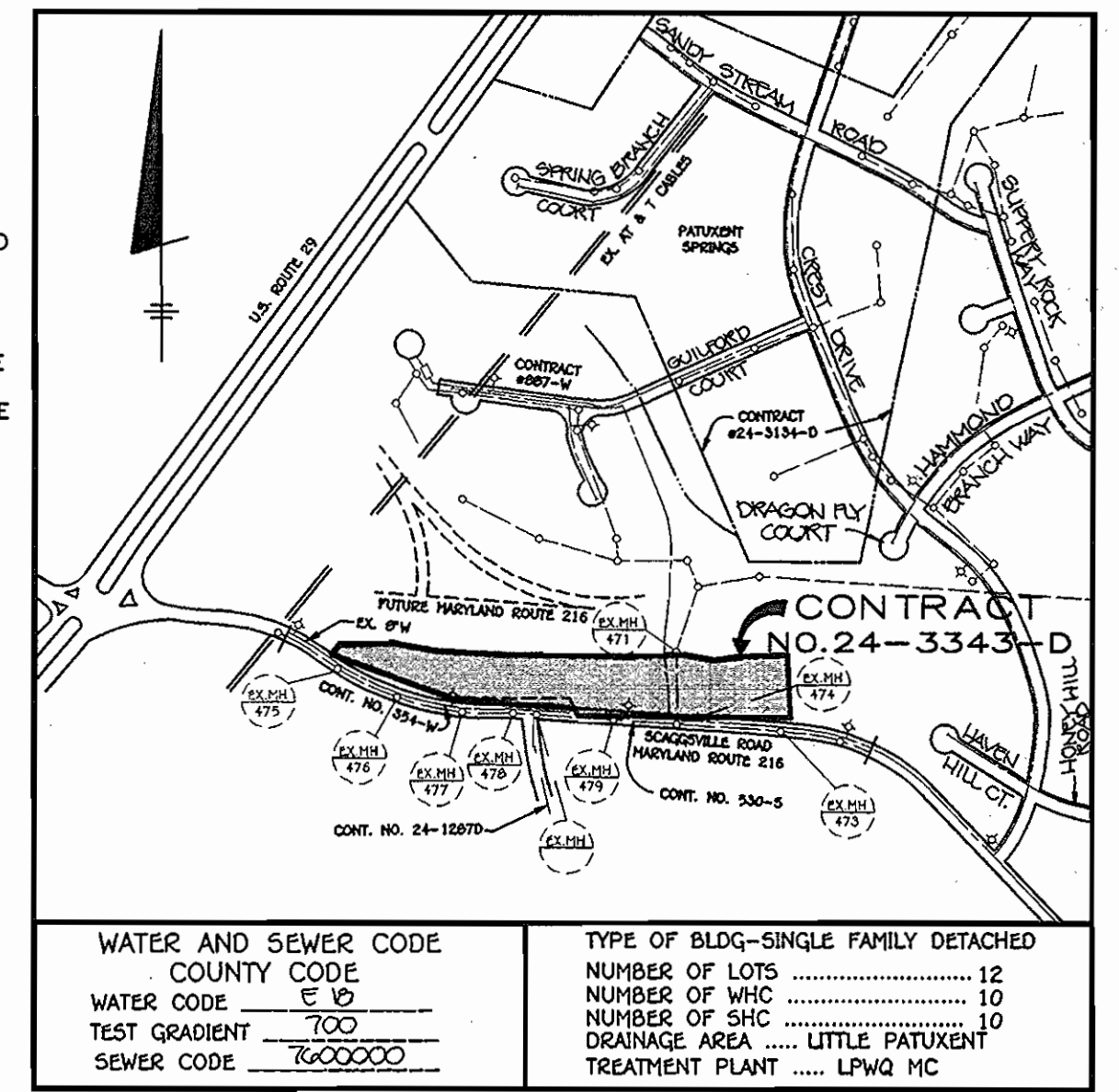
- THE EXISTING CABLE RUNNING ON THE NORTH SIDE OF MD. ROUTE 216 IS OF SUBSTANTIAL COMMUNICATION IMPORTANCE. IT SHALL BE THE CONTRACTOR'S RESPONSIBILITY TO VERIFY ITS LOCATION AND EXERCISE EXTREME CARE WHEN CONDUCTING CONSTRUCTION ACTIVITIES IN THE AREA.
- ALL WHC SHC CROSSING EXISTING MD. ROUTE 216 REQUIRING ROAD CUTS SHALL BE SAW CUT AND PAVEMENT REPAIRED AS SHOWN IN THE DETAIL ON THIS SHEET.
- EXISTING FIRE HYDRANTS TO BE RELOCATED SHALL BE SALVAGED AND RESET AT PROPOSED LOCATION. IF UNFORESEEN CIRCUMSTANCES ARISE THAT WILL NOT WARRANT REUSE THE SALVAGED HYDRANT SHALL BE DELIVERED TO THE HO.CO. DPW MAINTENANCE DIVISION.
- STATIONS AND OFFSET DISTANCES TO EXISTING WATER AND SEWER LINES REFLECT INFORMATION OBTAINED FROM AS BUILT DRAWINGS. IT SHALL BE THE CONTRACTOR'S RESPONSIBILITY TO VERIFY THE LOCATIONS.
- SEDIMENT CONTROL FOR SANITARY SEWER AND WATER HOUSE CONNECTIONS SHALL BE IN ACCORDANCE WITH STANDARD DETAIL PLANS (P-95-118) AND THE LOCAL MARYLAND STANDARDS AND SPECIFICATIONS FOR SOIL EROSION AND SEDIMENT CONTROL (REFER TO SECTION D FOR DETAILED DRAWINGS OF EXCAVATED AREAS).

PART II - WATER

- ALL WATER MAINS TO BE D.I.P. CLASS 52 UNLESS OTHERWISE NOTED.
- TOPS OF ALL WATER MAINS TO HAVE A MINIMUM OF 3-1/2" COVER UNLESS OTHERWISE NOTED.
- VALVES ADJACENT TO TEES SHALL BE STRAPPED TO TEES.
- ALL FITTINGS SHALL BE BUTTRESSED OR ANCHORED WITH CONCRETE IN ACCORDANCE WITH THE STANDARD DETAILS UNLESS OTHERWISE PROVIDED FOR ON THE DRAWINGS.
- FIRE HYDRANTS SHALL BE SET TO THE BURY LINE ELEVATIONS SHOWN ON THE DRAWINGS. ALL FIRE HYDRANTS SHALL BE STRAPPED AND BUTTRESSED WITH CONCRETE IN ACCORDANCE WITH STANDARD DETAILS. SOIL AROUND THE FIRE HYDRANT SHALL BE COMPACTED IN ACCORDANCE WITH SECTION 1000 AND 1005 OF THE STANDARD SPECIFICATIONS. THE CONTRACTOR SHALL NOT OPERATE ANY WATER MAIN VALVES ON THE EXISTING WATER SYSTEM.
- ALL WATER HOUSE CONNECTIONS SHALL BE FOR INSIDE METER SETTING UNLESS OTHERWISE NOTED ON PLANS OR IN SPECIFICATIONS.
- FOR DETAIL OF FIRE HYDRANT SETTING REFER TO HO.CO. STD W1.11

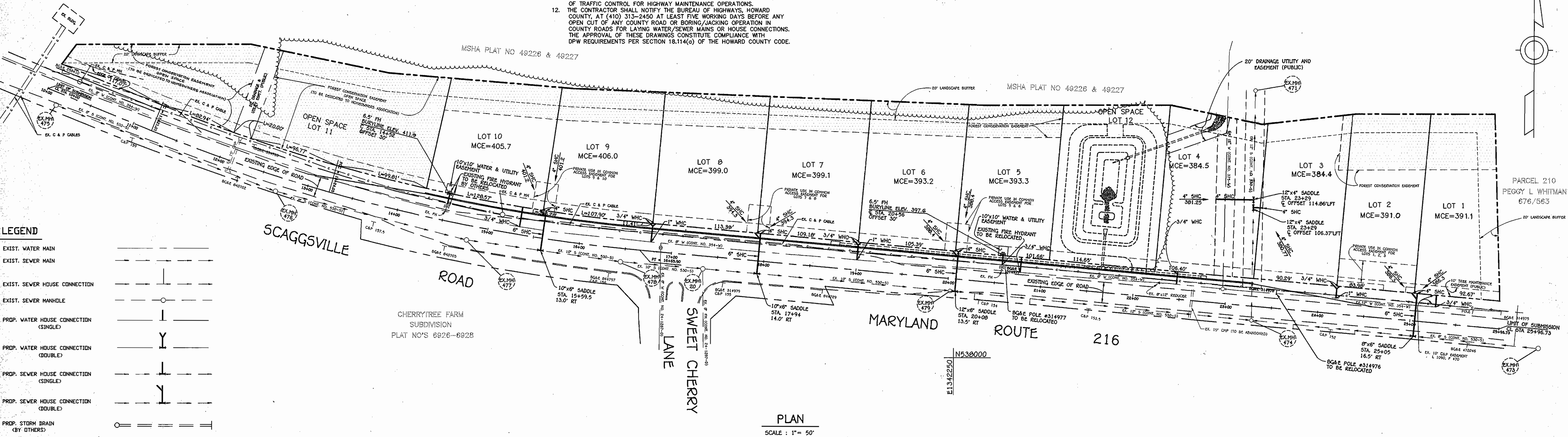
PART III - SEWER

- ALL SEWER MAINS SHALL BE DIP, RCP, VCPX, CSPX, RCPD AND P.V.C. UNLESS OTHERWISE NOTED.
- ALL MANHOLES SHALL BE 4' - 0" INSIDE DIAMETER UNLESS OTHERWISE NOTED.
- FORCE MAINS SHALL BE D.I.P. ONLY.
- MANHOLES SHOWN WITH 12" AND 16" WALLS ARE FOR BRICK MANHOLES.
- MANHOLES DESIGNATED W.T. IN PLAN AND PROFILE SHALL HAVE WATER TIGHT FRAME AND COVERS, STANDARD DETAIL C5.52. WHERE WATER TIGHT MANHOLE FRAME AND COVER IS USED, SET TOP OF FRAME 1" - 6" ABOVE FINISHED GRADE UNLESS OTHERWISE NOTED ON THE DRAWINGS.
- HOUSE(S) WITH THE SYMBOL "C.N.S." INDICATES THAT CELLAR CANNOT BE SERVED.
- ALL SHC'S SHALL BE AT 2% TO THE PROPERTY LINE UNLESS OTHERWISE NOTED.
- MCE INDICATES MINIMUM CELLAR ELEVATION.



N530500
E1342250

N530500
E1342250



LEGEND

EXIST. WATER MAIN	---
EXIST. SEWER MAIN	---
EXIST. SEWER HOUSE CONNECTION	---
EXIST. SEWER MANHOLE	○
PROP. WATER HOUSE CONNECTION (SINGLE)	---
PROP. WATER HOUSE CONNECTION (DOUBLE)	---
PROP. SEWER HOUSE CONNECTION (SINGLE)	---
PROP. SEWER HOUSE CONNECTION (DOUBLE)	---
PROP. STORM DRAIN (BY OTHERS)	---

HOWARD SOIL CONSERVATION DISTRICT
 REVIEWED FOR HOWARD SOIL CONSERVATION DISTRICT
 AND MEETS TECHNICAL REQUIREMENTS

Patricia Engle 8/14/95
 NATURAL RESOURCES CONSERVATION SERVICE DATE

THIS PLAN IS APPROVED FOR SOIL EROSION AND SEDIMENT CONTROL BY THE HOWARD SOIL CONSERVATION DISTRICT.

John R. Roberts 8/14/95
 HOWARD SOIL CONSERVATION DISTRICT DATE

SEDIMENT CONTROL MEASURE FOR THIS CONTRACT WILL BE IMPLEMENTED IN ACCORDANCE WITH SECTION 219 OF THE HOWARD COUNTY STANDARD SPECIFICATIONS AND AS PER ROAD CONSTRUCTION PLANS F-95-118

QUANTITIES

ITEM	QUANTITIES ESTIMATED	AS BUILT		MANUFACTURER/SUPPLIER
		QUANTITIES	TYPE	
3/4" WHC	92 LF			
1" WHC	45 LF			
4" SHC	111 LF			
6" SHC	152 LF			
8"x6" SADDLE	1 EA			
10"x6" SADDLE	2 EA			
12"x4" SADDLE	2 EA			
12"x6" SADDLE	1 EA			
PAVEMENT CUT/REPAIRS	72 SY			
NAME OF UTILITY CONTRACTOR				
SURVEY AND DRAFTING DIVISION ASBUILT DATE				

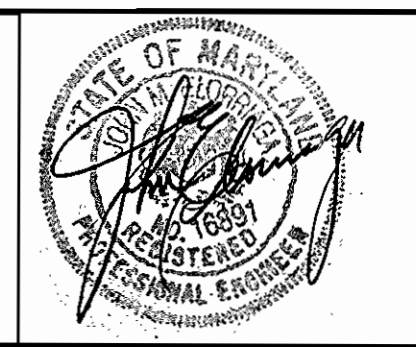
DEPARTMENT OF PUBLIC WORKS
 HOWARD COUNTY, MARYLAND

John R. Roberts 8-7-95
 CHIEF BUREAU OF UTILITIES DATE

DEPARTMENT OF PLANNING & ZONING
 HOWARD COUNTY, MARYLAND

John R. Roberts 8/14/95
 CHIEF, DEVELOPMENT ENGINEERING DIVISION DATE

T.S.A. GROUP INC.
 planning • engineering • surveying
 8480 Baltimore National Pike • Suite 418
 Ellicott City, Maryland 21043



DES:	GWF
DRN:	JR
CHK:	DAM
DATE:	
BY:	NO.
REVISIONS:	
DATE:	

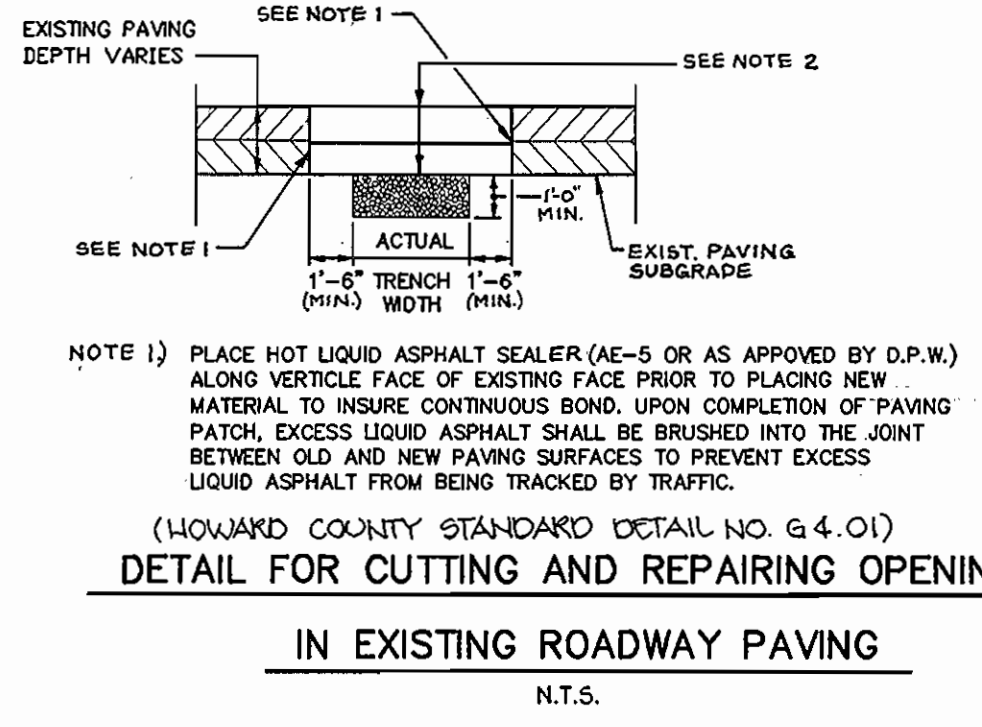
600 SCALE MAP NO. 46
 BLOCK NO. 4&5

PLAN OF WATER & SEWER MAINS

MOLLY'S HILL LOTS 1 - 12

ELECTION DISTRICT NO. 6
CONTRACT NO. 24-3343-D

SCALE: 1" = 50'
 SHEET 1 OF 2



CONTRACTOR NOTE:
 CONTRACTOR SHALL NOTIFY BUREAU OF UTILITIES A MINIMUM OF SEVEN (7) DAYS PRIOR TO MAKING SEWER TAPS ON SCAGGSVILLE ROAD BUREAU OF UTILITIES WILL T.V. THE SEWER LINE BEFORE WORK BEGINS.

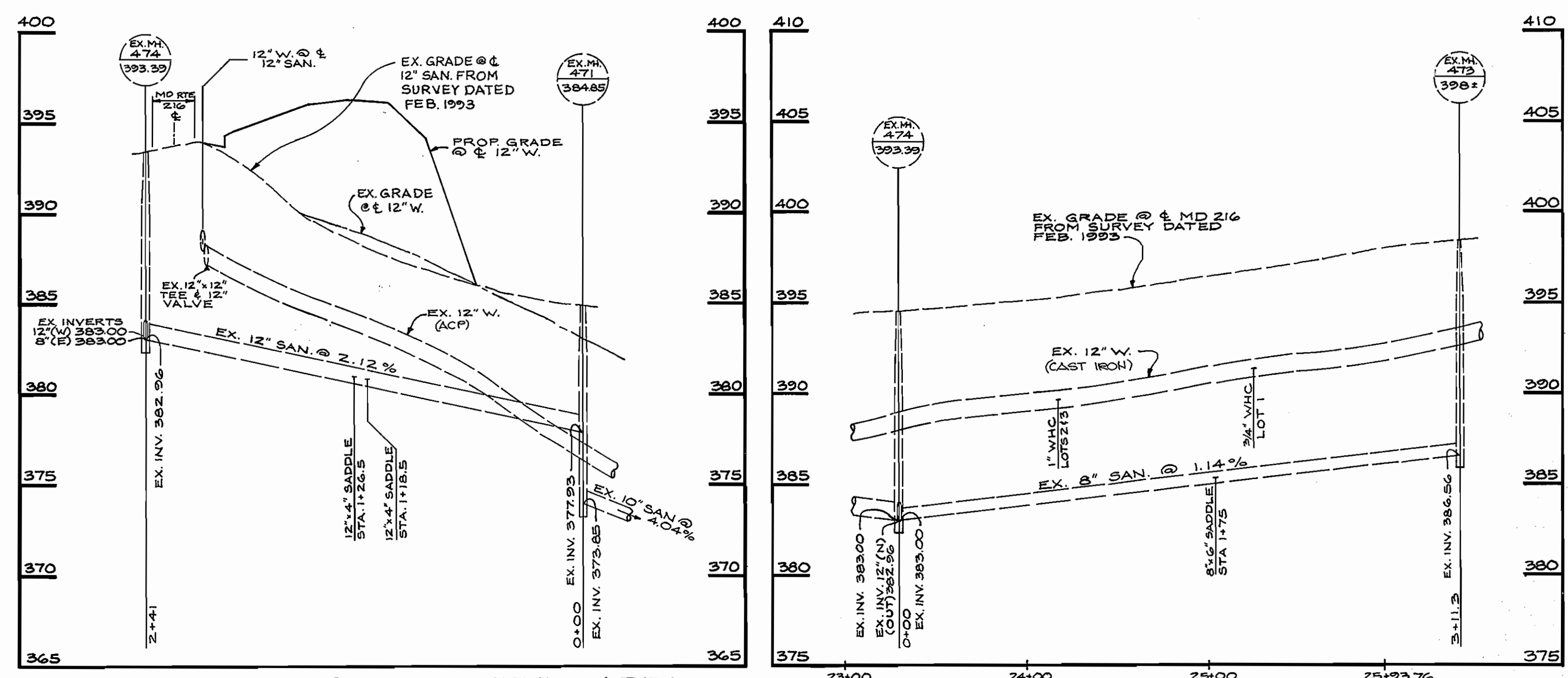
NOTE 1) PLACE HOT LIQUID ASPHALT SEALER (AE-5 OR AS APPROVED BY D.P.W.) ALONG VERTICAL FACE OF EXISTING FACE PRIOR TO PLACING NEW MATERIAL TO INSURE CONTINUOUS BOND. UPON COMPLETION OF PAVING PATCH, EXCESS LIQUID ASPHALT SHALL BE BRUSHED INTO THE JOINT BETWEEN OLD AND NEW PAVING SURFACES TO PREVENT EXCESS LIQUID ASPHALT FROM BEING TRACKED BY TRAFFIC.

NOTE 2) PAVEMENT PATCH MATERIALS AND COURSE THICKNESS SHALL BE EQUAL TO EXISTING PAVING SECTION OR AS APPROVED BY DPW. MINIMUM PAVING PATCH SHALL CONSIST OF 3" BIT. CONC. SURFACE MAT. PLACED IN TWO 1 1/2" COURSES. BIT CONC. BASE MATERIAL, WHEN PLACED, SHALL NOT EXCEED 8" THICKNESS PER COURSE. STONE BASE MATERIAL SHALL NOT EXCEED 8" THICKNESS PER COURSE.

(HOWARD COUNTY STANDARD DETAIL NO. 64-01)
DETAIL FOR CUTTING AND REPAIRING OPENINGS IN EXISTING ROADWAY PAVING
 N.T.S.

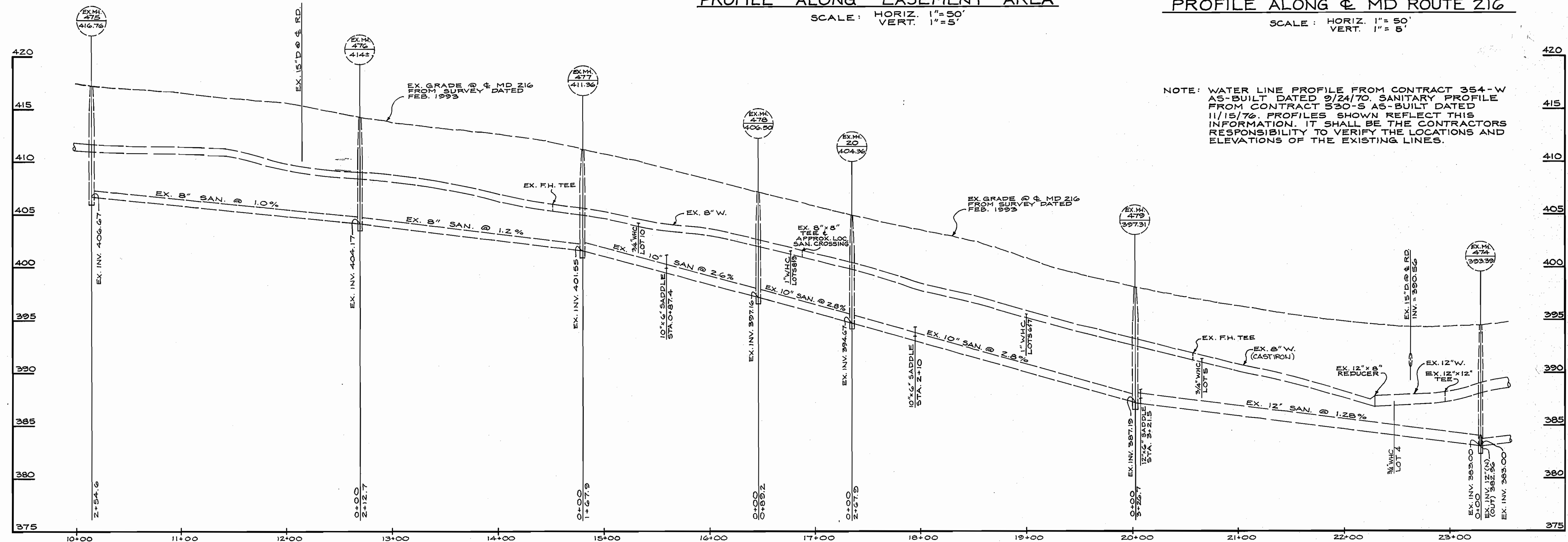
Molly's Hill (lots 1-12)
 03 1995
 03 15 23 15
 03 15 23 15

2272 MOLLY'S HILL
 05/15/83
 14.15.43 1984



PROFILE ALONG EASEMENT AREA
 SCALE: HORIZ. 1"=50'
 VERT. 1"=5'

PROFILE ALONG MD ROUTE 216
 SCALE: HORIZ. 1"=50'
 VERT. 1"=5'



PROFILE ALONG MD ROUTE 216
 SCALE: HORIZ. 1"=50'
 VERT. 1"=5'

NOTE: WATER LINE PROFILE FROM CONTRACT 354-W AS-BUILT DATED 9/24/70. SANITARY PROFILE FROM CONTRACT 530-S AS-BUILT DATED 11/15/76. PROFILES SHOWN REFLECT THIS INFORMATION. IT SHALL BE THE CONTRACTORS RESPONSIBILITY TO VERIFY THE LOCATIONS AND ELEVATIONS OF THE EXISTING LINES.

DEPARTMENT OF PUBLIC WORKS HOWARD COUNTY, MARYLAND <i>Robert Seman</i> CHIEF, BUREAU OF UTILITIES 8-7-95 DATE	DEPARTMENT OF PLANNING & ZONING HOWARD COUNTY, MARYLAND <i>Alan Dammann</i> CHIEF, DEVELOPMENT ENGINEERING DIVISION DATE	T.S.A. GROUP INC. planning • engineering • surveying 8480 Baltimore National Pike • Suite 418 Ellicott City, Maryland 21043		DES: GWF DRN: JFB CHK: DAM DATE:	<table border="1" style="width: 100%; border-collapse: collapse;"> <thead> <tr> <th>BY</th> <th>NO.</th> <th>REVISIONS</th> <th>DATE</th> </tr> </thead> <tbody> <tr> <td> </td> <td> </td> <td> </td> <td> </td> </tr> </tbody> </table>	BY	NO.	REVISIONS	DATE					PROFILES OF WATER & SEWER MAINS 600 SCALE MAP NO. 46 BLOCK NO. 445	MOLLY'S HILL LOTS 1 - 12 ELECTION DISTRICT NO. 6 CONTRACT NO. 24-3343-D	SCALE: AS SHOWN SHEET 2 OF 2
BY	NO.	REVISIONS	DATE													