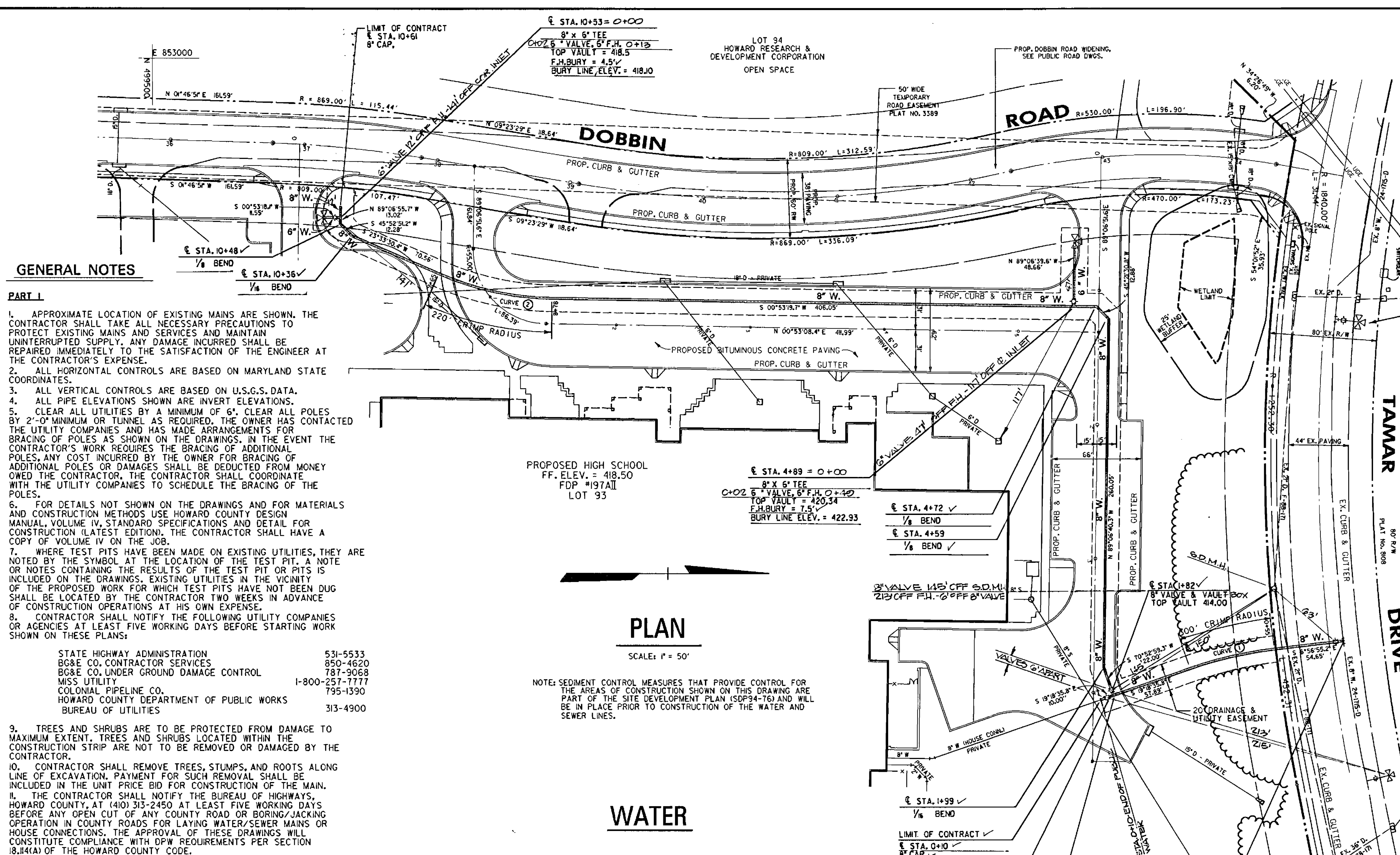
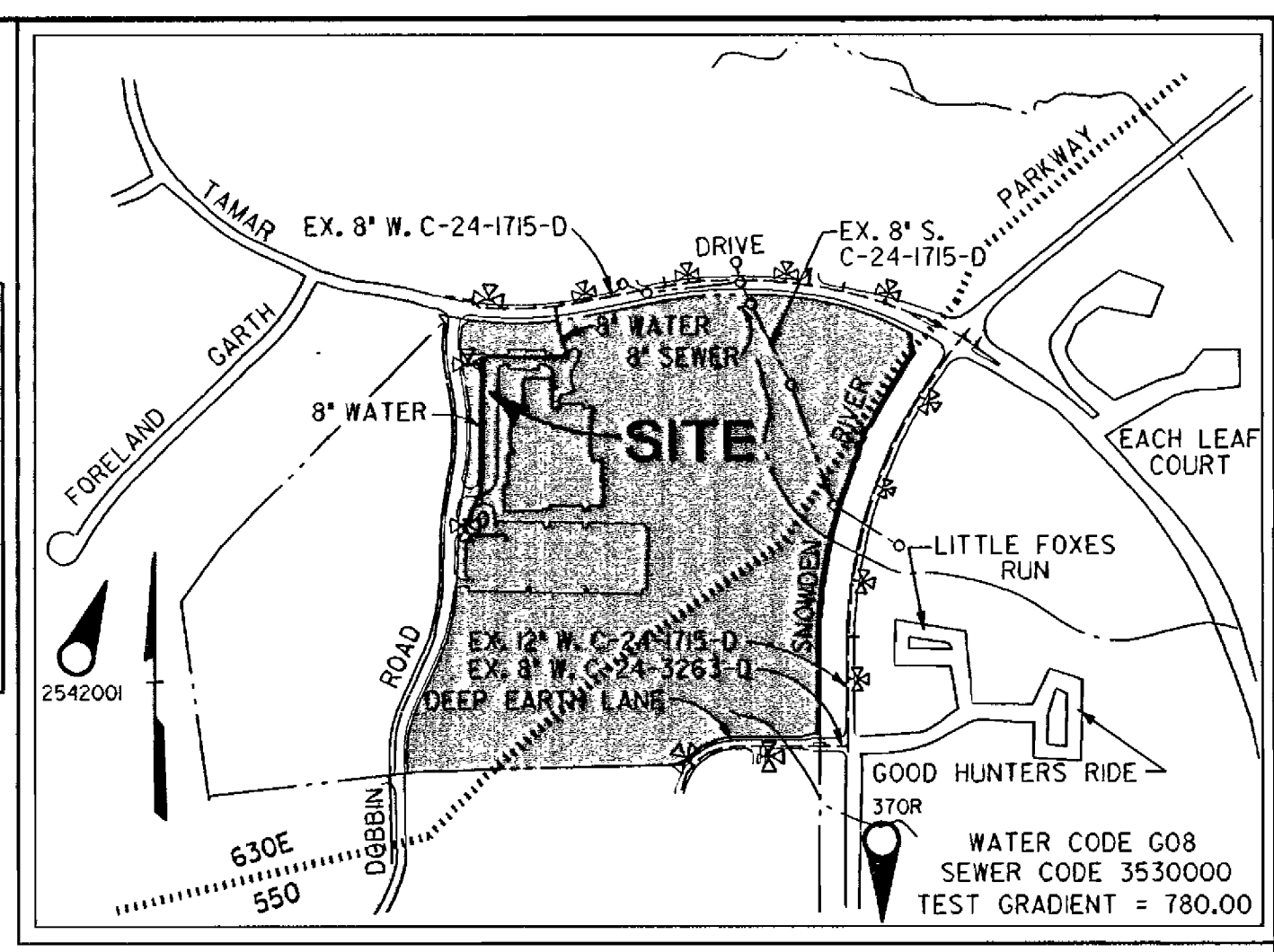


3338
 ws/1
 VLR 3/2
 EASTERN H.S.
 2/24/95

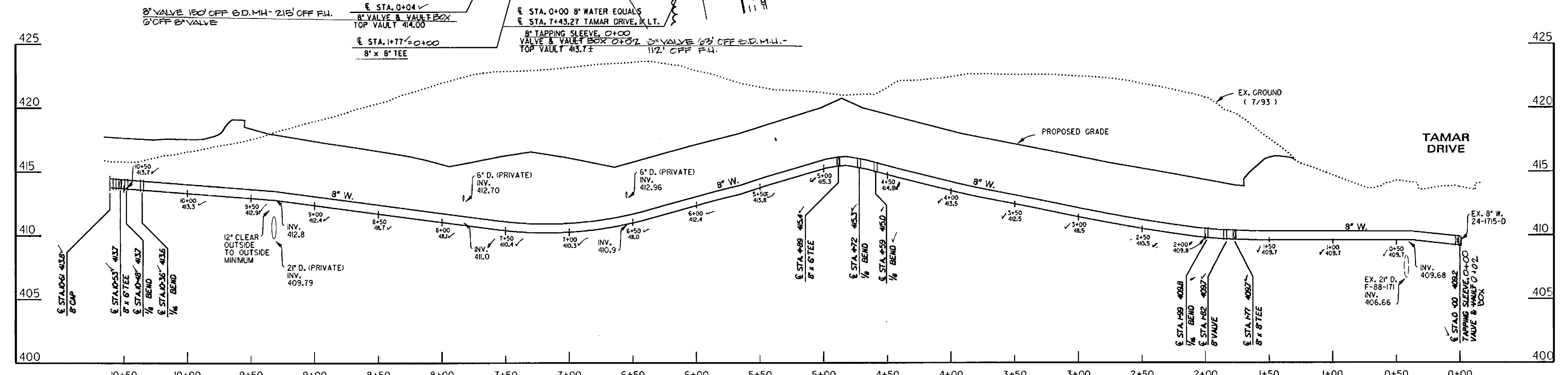
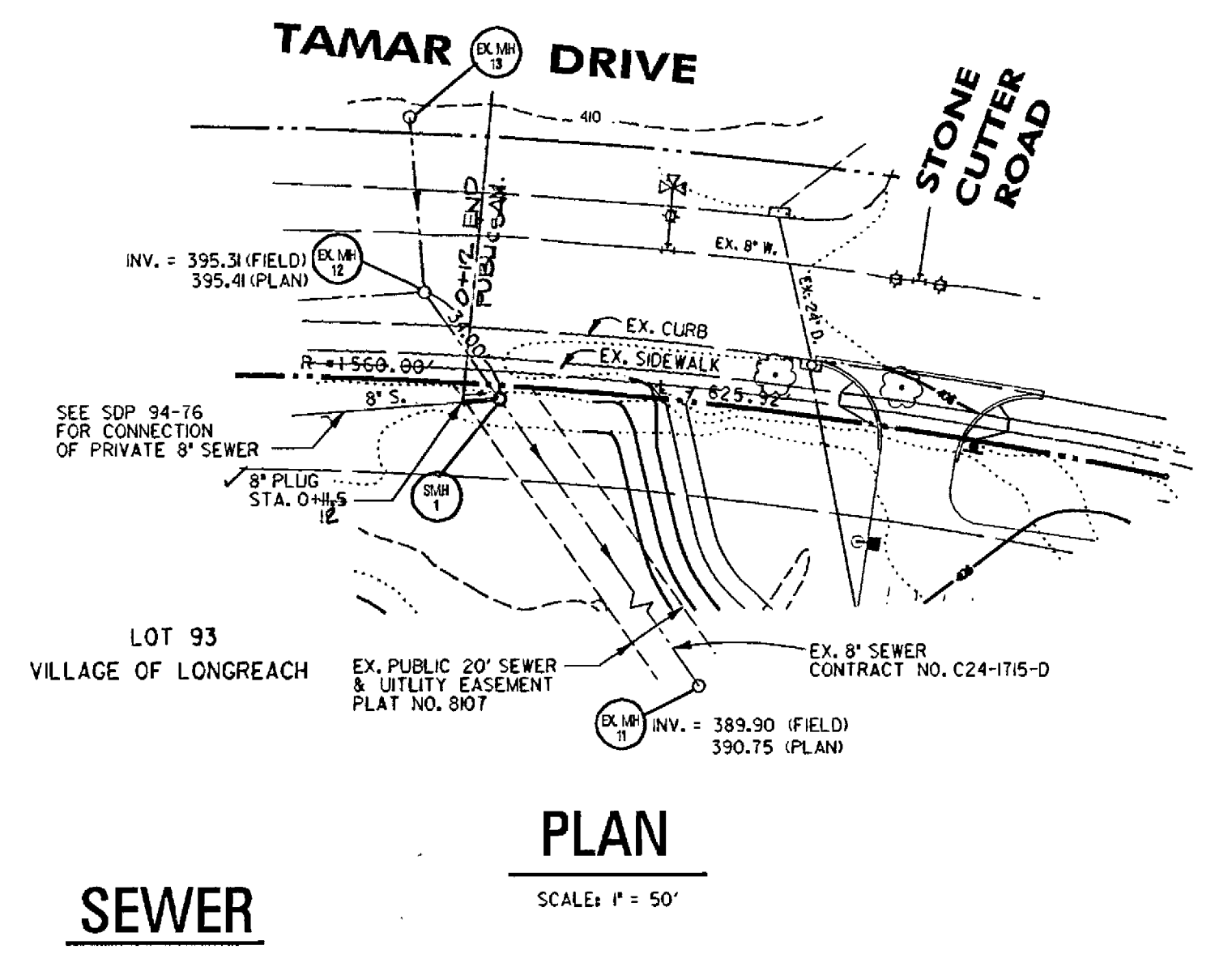
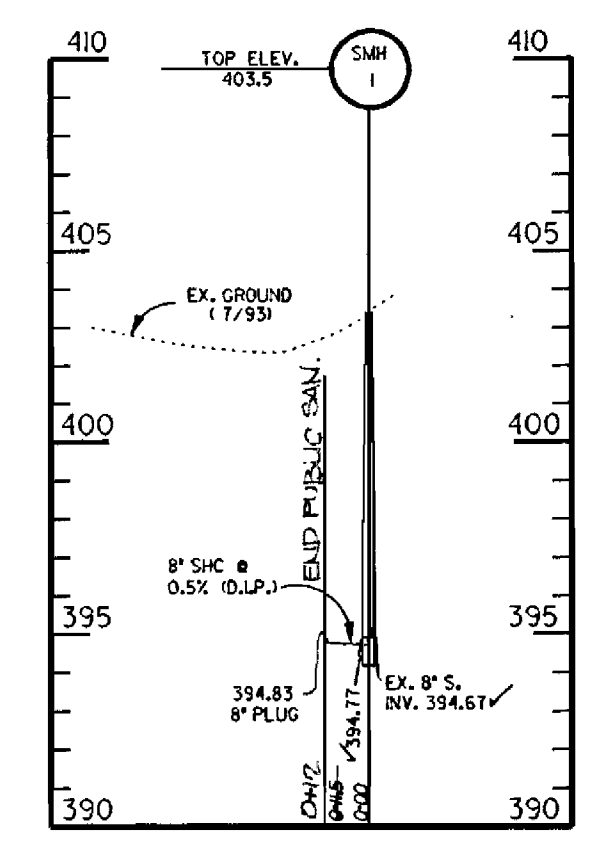


ITEM	QUANTITIES ESTIMATED	AS-BUILT		
		QUANTITIES	TYPE	MANUFACTURER/SUPPLIER
8" W.	1071 LF	1071 LF	D.I.P.	GRIFFIN PIPE CO.
6" W.	61 LF	62 LF	D.I.P.	"
FIRE HYDRANT	2 EA	2 EA	CAST IRON	MUELLER CO.
8" VALVE	2 EA	2 EA	CAST IRON	"
8" x 8" T.S.V.	1 EA	1 EA	CAST IRON	"
8" S.	1.5 LF	1 LF	P.V.C.	J.M. MANUFACTURING
4" DIA. M.H.	1 EA	1 EA	PRECAST	TERRE HILL

NAME OF UTILITY CONTRACTOR _____
 SURVEY AND DRAFTING DIVISION AS-BUILT DATE _____



FIRE HYDRANT FLOW TEST CONDUCTED AT THIS HYDRANT ON 10-8-93 BY BUREAU OF UTILITIES. 0 = 1405 gpm AT RESIDUAL PRESSURE OF 73 PSI. WATER ZONE IS 630 EAST.



REVIEWED FOR HOWARD SOIL CONSERVATION DISTRICT AND MEETS TECHNICAL REQUIREMENT
 F-94-74 SDP-94-76
 Patricia Engler
 SIGNATURE DATE 5/26/94

THIS DEVELOPMENT PLAN IS APPROVED FOR SOIL EROSION AND SEDIMENT CONTROL BY THE HOWARD COUNTY CONSERVATION DISTRICT.
 APPROVED BY John R. Rhoads
 HOWARD COUNTY S.C.D. DATE 5/26/94

APPROVED HOWARD COUNTY DEPT. OF PUBLIC WORKS

CHIEF, BUREAU OF HIGHWAYS	DATE
CHIEF, BUREAU OF ENGINEERING	DATE
CHIEF, LAND DEVELOPMENT DIVISION	DATE

BENCHMARK
DESCRIPTION
STATION 370R (1/4" REBAR)
N6198B794, E416565, 7954 FOR HORIZONTAL CONTROL ONLY
STATION IS LOCATED 0.45 MILES NORTH OF RTE. 175 AND 46' EAST OF THE EAST CURB OF SNOWDEN RIVER PARKWAY

BENCHMARK
DESCRIPTION
STATION 254200R (CONCRETE MONUMENT)
ELEV. 426.371 FOR VERTICAL CONTROL ONLY
STATION IS LOCATED ON BGE TRANSMISSION LINES 1060' W. OF DOBBIN ROAD

SEDIMENT CONTROL MEASURES FOR THE PUBLIC LINES ARE SHOWN IN THE SITE DEVELOPMENT PACKAGE FOR EASTERN HIGH SCHOOL & WILL BE IMPLEMENTED IN ACCORDANCE WITH THE HOWARD CO. STANDARDS AND SPECIFICATIONS.

CURVE NO.	DELTA	RADIUS	LENGTH	TANGENT	CHORD
1	12°21'41"	300.00'	64.73'	32.49'	S 13°07'46" E 64.60'
2	22°40'11"	220.00'	87.05'	44.00'	S 12°13'25" W 86.48'

WATER & SEWER AS-BUILTS

TYPE OF BUILDING:	HIGH SCHOOL
NO. OF LOTS / PARCELS:	1
NO. OF WATER HOUSE CONNECTIONS:	1
NO. OF SEWER HOUSE CONNECTIONS:	1
DRAINAGE AREA:	DORSEY RUN
TREATMENT PLANT:	LITTLE PATUXENT WATER QUALITY MANAGEMENT CENTER, SAVAGE, HOWARD COUNTY

DEPARTMENT OF PUBLIC WORKS
 HOWARD COUNTY, MARYLAND
 Director of Public Works - DATE
 Chief - Bureau of Engineering - DATE
 Chief - Bureau of Utilities - DATE
 Chief - Land Development Division - DATE

DMW
 Daft · McCune · Walker, Inc.
 A Team of Land Planners, Landscape Architects, Engineers, Surveyors & Environmental Professionals
 200 East Pennsylvania Avenue
 Towson, Maryland 21286
 410 296 3333
 Fax 296 4705

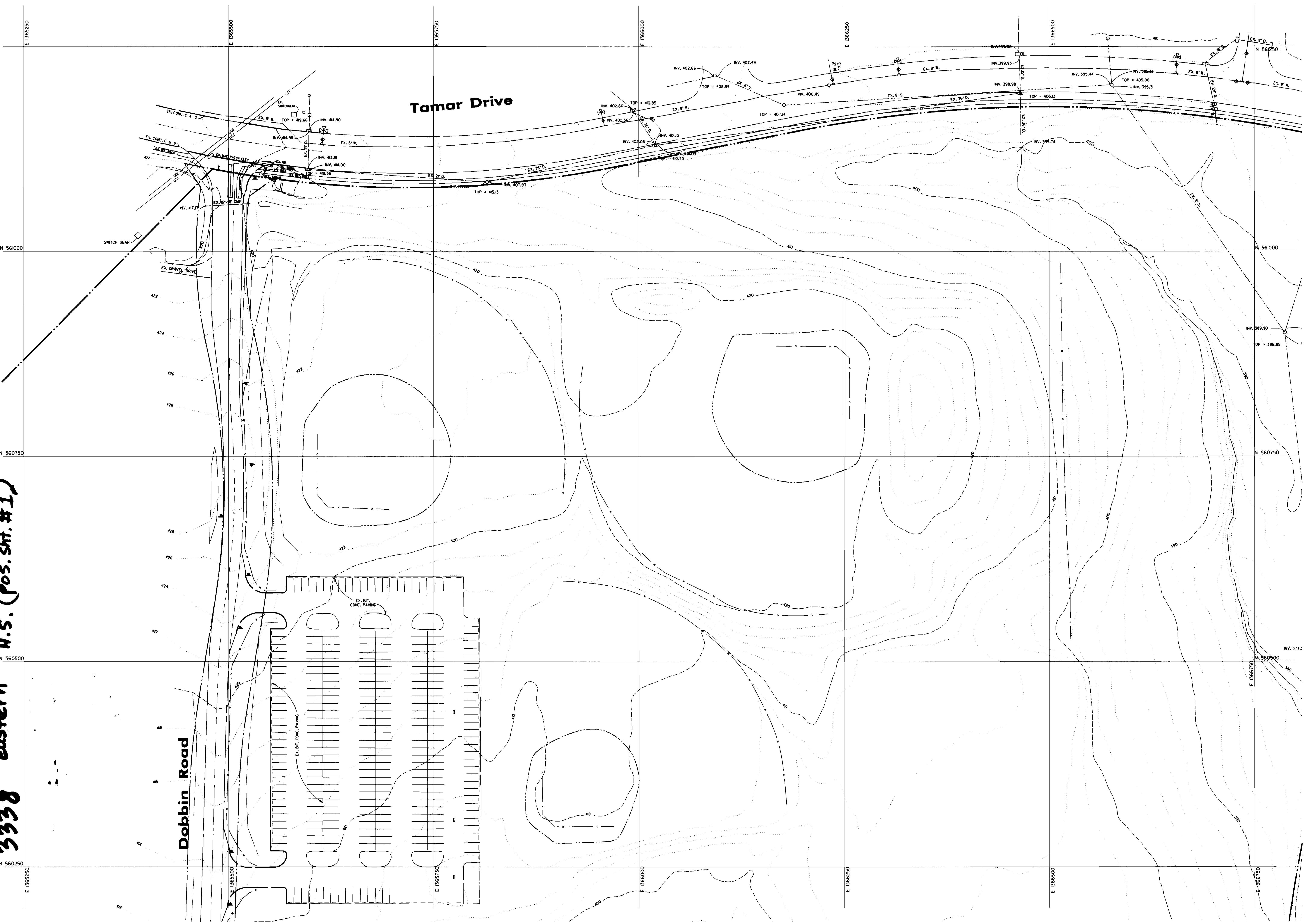


DESIGN BY: LWW/MAT
 DRAWN BY: MAT
 CHECKED BY: LWW
 DATE: 5-13-94

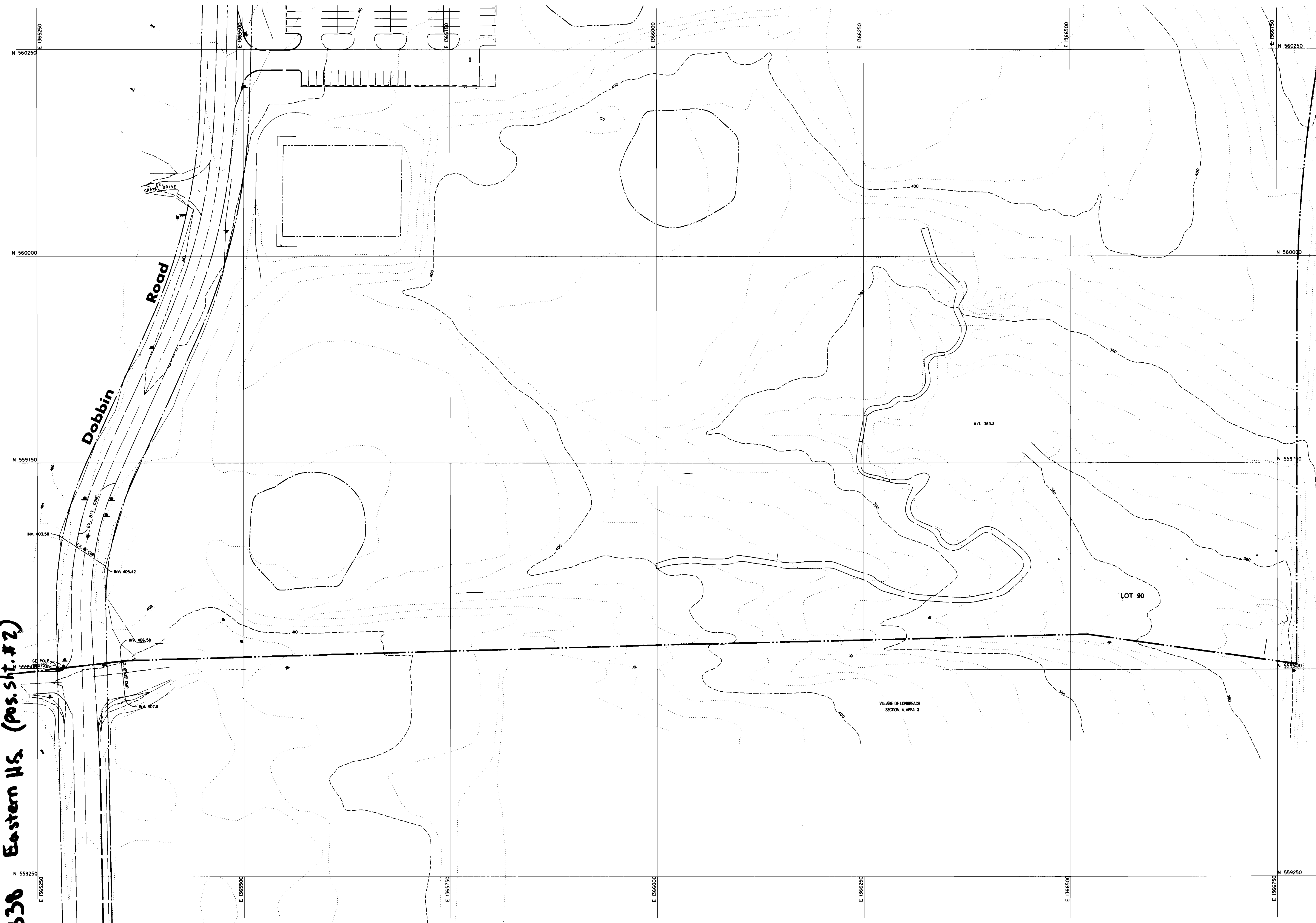
WATER AND SEWER PLAN & PROFILE
 SCALE: AS SHOWN
 SHEET 1 OF 1
 600 SCALE MAP NO. 36 BLOCK NO. 11

EASTERN HIGH SCHOOL
 VILLAGE OF LONGREACH
 SECTION 3 AREA 2
 LOT 93
 6TH ELECTION DISTRICT
 CONTRACT NO. 24-3338-D

3338 Eastern H.S. (pos. sht. #1)



3338 Eastern Hs. (pos. sht. #2)



HOWARD COUNTY
 DEPARTMENT OF PUBLIC WORKS
 BUREAU OF ENGINEERING
 SURVEY & DRAFTING DIVISION

Scale : 1" = 50'

Map No. _____