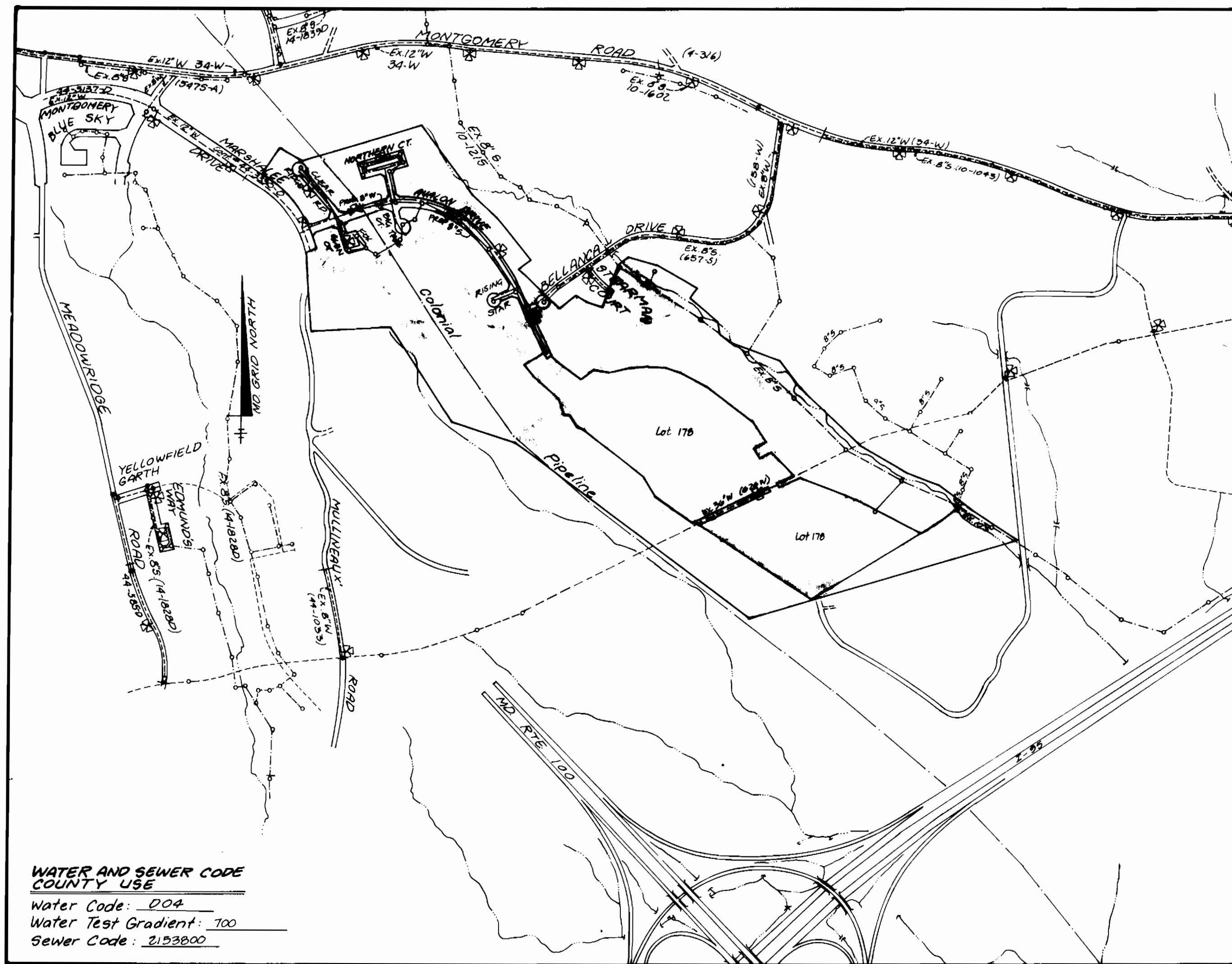


BENCH MARKS:

HO. CO. MAP # 2044-005 E.I. 410.90
 HO. CO. MAP # 2044-004 E.I. 407.14

LOT	INVC	RE	MCE	LOT	INVC	RE	MCE
273	301.07	301.07	301.07	273	301.07	301.07	301.07
274	301.07	301.07	301.07	274	301.07	301.07	301.07
275	301.07	301.07	301.07	275	301.07	301.07	301.07
276	301.07	301.07	301.07	276	301.07	301.07	301.07
277	301.07	301.07	301.07	277	301.07	301.07	301.07
278	301.07	301.07	301.07	278	301.07	301.07	301.07
279	301.07	301.07	301.07	279	301.07	301.07	301.07
280	301.07	301.07	301.07	280	301.07	301.07	301.07
281	301.07	301.07	301.07	281	301.07	301.07	301.07
282	301.07	301.07	301.07	282	301.07	301.07	301.07
283	301.07	301.07	301.07	283	301.07	301.07	301.07
284	301.07	301.07	301.07	284	301.07	301.07	301.07
285	301.07	301.07	301.07	285	301.07	301.07	301.07
286	301.07	301.07	301.07	286	301.07	301.07	301.07
287	301.07	301.07	301.07	287	301.07	301.07	301.07
288	301.07	301.07	301.07	288	301.07	301.07	301.07
289	301.07	301.07	301.07	289	301.07	301.07	301.07
290	301.07	301.07	301.07	290	301.07	301.07	301.07
291	301.07	301.07	301.07	291	301.07	301.07	301.07
292	301.07	301.07	301.07	292	301.07	301.07	301.07
293	301.07	301.07	301.07	293	301.07	301.07	301.07
294	301.07	301.07	301.07	294	301.07	301.07	301.07
295	301.07	301.07	301.07	295	301.07	301.07	301.07
296	301.07	301.07	301.07	296	301.07	301.07	301.07
297	301.07	301.07	301.07	297	301.07	301.07	301.07
298	301.07	301.07	301.07	298	301.07	301.07	301.07
299	301.07	301.07	301.07	299	301.07	301.07	301.07
300	301.07	301.07	301.07	300	301.07	301.07	301.07
301	301.07	301.07	301.07	301	301.07	301.07	301.07
302	301.07	301.07	301.07	302	301.07	301.07	301.07
303	301.07	301.07	301.07	303	301.07	301.07	301.07
304	301.07	301.07	301.07	304	301.07	301.07	301.07
305	301.07	301.07	301.07	305	301.07	301.07	301.07
306	301.07	301.07	301.07	306	301.07	301.07	301.07
307	301.07	301.07	301.07	307	301.07	301.07	301.07
308	301.07	301.07	301.07	308	301.07	301.07	301.07
309	301.07	301.07	301.07	309	301.07	301.07	301.07
310	301.07	301.07	301.07	310	301.07	301.07	301.07
311	301.07	301.07	301.07	311	301.07	301.07	301.07
312	301.07	301.07	301.07	312	301.07	301.07	301.07
313	301.07	301.07	301.07	313	301.07	301.07	301.07
314	301.07	301.07	301.07	314	301.07	301.07	301.07
105	301.07	301.07	301.07	105	301.07	301.07	301.07
106	301.07	301.07	301.07	106	301.07	301.07	301.07
107	301.07	301.07	301.07	107	301.07	301.07	301.07
108	301.07	301.07	301.07	108	301.07	301.07	301.07
109	301.07	301.07	301.07	109	301.07	301.07	301.07
110	301.07	301.07	301.07	110	301.07	301.07	301.07
111	301.07	301.07	301.07	111	301.07	301.07	301.07
112	301.07	301.07	301.07	112	301.07	301.07	301.07



INDEX OF SHEETS	
SHEET No.	TITLE
1	TITLE SHEET
2	PLAN VIEW - AUALON DRIVE
3	PLAN VIEW - BELLANCA DRIVE & STEARMAN COURT
4	PLAN VIEW - LOT 17B
5	PROFILES - AUALON DRIVE & BELLANCA DRIVE
6	PROFILES - CLEAR RIDGE ROAD & FOX GLEN COURT
7	PROFILES - NORTHERN COURT & RISING STAR

- PART I:**
- Approximate location of existing mains are shown. The Contractor shall take all necessary precautions to protect existing mains and services and maintain uninterrupted supply. Any damage incurred shall be repaired immediately to the satisfaction of the Engineer at the Contractor's expense.
 - All horizontal controls are based on Maryland State Coordinates.
 - All vertical controls are based on U.S.G.S. data.
 - All pipe elevations shown are invert elevations.
 - Clear all utilities by a minimum of 6". Clear all poles by 2'-0" minimum or tunnels as required. The owner has contacted the utility companies and has made arrangements for bracing of poles as shown on the drawings. In the event the Contractor's work requires the bracing of additional poles, any cost incurred by the owner for bracing of additional poles or damages shall be deducted from money owed the Contractor. The Contractor shall coordinate with the utility companies to schedule the bracing of the poles.
 - For details not shown on the drawings and for materials and construction methods, use Howard County Design Manual, Volume IV, Standard Specifications and Details for Construction (Latest Edition). The Contractor shall have a copy of Volume IV on the job.
 - Where test pits have been made on existing utilities, they are noted by the symbol 'P' at the location of the test pit. A note or notes containing the results of the test pit or pits is included on the drawings. Existing utilities in the vicinity of the proposed work for which test pits have not been dug shall be located by the Contractor two weeks in advance of construction operations at his own expense.
 - Contractor shall notify the following utility companies or agencies at least five working days before starting work shown on these plans:
 - a) State Highway Administration: 531-5533
 - b) Baltimore Gas & Electric Co.: 850-4660
 - c) Baltimore Gas & Electric Co.: 787-9068
 - d) Miss Utility: 1-800-297-7777
 - e) Colonial Pipeline Company: 793-1390
 - f) Howard County Dept. of Public Works
 - g) Bureau of Utilities: 313-4900
 - Trees and shrubs are to be protected from damage to maximum extent. Trees and shrubs within the construction strip are not to be removed or damaged by the Contractor.
 - Contractor shall remove trees, stumps and roots along line of excavation. Payment for such removal shall be included in the unit price bid for construction of the main.

PART II: WATER (cont.)

- Provide an outside meter vault for lots 108, 109, and 110.
- For Town House units lots 144-163 use a 1 1/2" inch water house connection for twin water-house connection.

PART II: WATER

- All water mains to be D.I.P. Class 52 unless otherwise noted.
- Taps of all water mains to have a minimum of 3/2" cover unless otherwise noted.
- Values adjacent to the fees shall be strapped to the fees.
- All fittings shall be buttressed or anchored with concrete in accordance with the Standard Details unless otherwise provided for on the drawings.
- Fire hydrants shall be set to the bury line elevations shown on the drawings. All fire hydrants shall be strapped and buttressed with concrete in accordance with the Standard Details. Soil around the fire hydrant shall be compacted in accordance with Section 1000 and 1005 of the Standard Specifications.
- The Contractor shall not operate any water main valves on the existing water system.
- All water house connections shall be for inside meter setting unless otherwise noted on plans or in specifications.

PART III: SEWER

- All sewer mains to be D.I.P., R.C.P., V.C.P., C.S.P.X., R.C.C.P. and PVC unless otherwise noted.
- All proposed sewers shall be public.
- All manholes shall be 4'-0" inside diameter unless otherwise noted.
- Force mains shall be D.I.P. only.
- Manholes designated W.T. in plan and profile shall have water tight frame and covers. Standard Detail 65-32 where water tight manhole frame and cover is used, set top of frame 1'-0" above finished grade unless otherwise noted on the drawings.
- Houses with the symbol "C.M.S." indicates that cellar cannot be served.
- Manholes shown with 12" and 16" walls are for brick manholes only.

WATER & SEWER CONSTRUCTION PLANS
LYNDWOOD MANOR
 SECTION ONE AREA ONE
 1st ELECTION DISTRICT HOWARD COUNTY, MARYLAND
 CONTRACT No. 14-3334-D

QUANTITIES		AS BUILT		
ITEM	QUANTITIES ESTIMATED	QUANTITIES	TYPE	MANUFACTURER / SUPPLIER
6" Water	984	990	CL 52 DIP	GRIFFIN PIPE
8" Water	3854	3801	CL 52 DIP	" "
6" Valves	8	9	" "	MUELLER CO.
8" Valves	8	13	" "	" "
8"x8" Cross	2	2	" "	GRIFFIN PIPE / BRS
8"x6" Reducer	4	3	" "	" "
8"x8" Tee	2	2	" "	" "
Fire Hydrants	8	8	" "	MUELLER CO.
8"x6" FHT	8	8	" "	GRIFFIN PIPE
8" Sewer PVC	4054	5058	SDR 35 PVC	J-M MFG.
Manholes	30	31	CONCRETE	ATLANTIC CONCRETE
4" SHC	2039	3595	SDR 35 PVC	J-M MFG.
1 1/2" W.H.C.	2785	209	"K" COPPER	HOWELL METALS
1" W.H.C.	429	440	"K" COPPER	" "
3/4" W.H.C.	45	2594	"K" COPPER	" "
8"x6" Tee	1	1	" "	GRIFFIN PIPE
8" Sewer D.I.P.	536	532	CL 52 DIP	HOWELL METALS
2" W		167	"K" COPPER	" "

REVIEWED FOR HOWARD SOIL CONSERVATION DISTRICT AND MEETS TECHNICAL REQUIREMENTS
 Patricia Engle/PSM 9/29/94
 U.S. SOIL CONSERVATION SERVICE

THIS DEVELOPMENT PLAN IS APPROVED FOR SOIL EROSION AND SEDIMENT CONTROL BY THE HOWARD COUNTY SOIL CONSERVATION DISTRICT
 John P. Roulson 9/29/94
 HOWARD SOIL CONSERVATION DISTRICT

SEDIMENT CONTROL MEASURES FOR THIS CONTRACT WILL BE IMPLEMENTED IN ACCORDANCE WITH SECTION 219 OF THE STANDARD SPECIFICATION AND FINAL ROAD CONSTRUCTION PLANS: F-94-29

DEPARTMENT OF PUBLIC WORKS
 HOWARD COUNTY, MD.
 Director of Public Works
 Chief - Bureau of Engineering
 Chief - Bureau of Utilities

LAND DESIGN ENGINEERING, INC.
 8035 N. COLUMBIA 100 PARKWAY
 COLUMBIA, MARYLAND 21045
 (410) 713-1070 (301) 596-3424

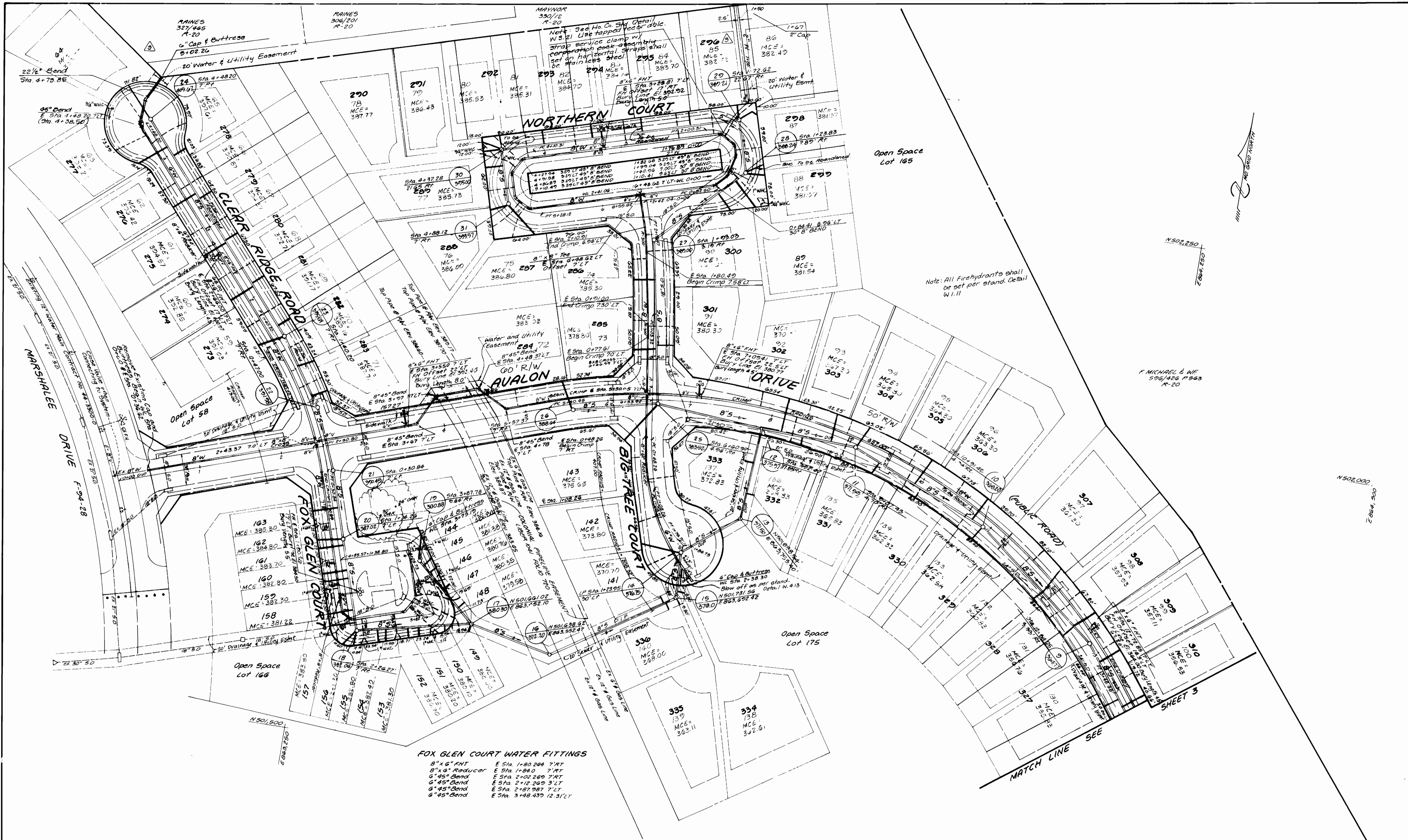
Designed TO			
Drawn WJ			
Checked RM			
Date 2/94			
By			
No.			
REVISION			
Date			

CHECK BOX SURVEY/DRAFTING DIVISION
 AS BUILT DATE:
TITLE SHEET
 600 SCALE MAP NO. 37 BLOCK 4

LYNDWOOD MANOR
 SECTION ONE AREA ONE
 Lots: 64, 89, 105-114, 121-123, 141-163, 178, 278-334
 1st Election District Howard County, Maryland
 Contract No. 14-3334-D
 SCALE AS SHOWN
 SHEET 1 OF 7

AS-BUILT 3-28-96
 W/1 LYNDWOOD MANOR, 1/1
 3334

3333A w/s 2 LYNDWOOD MANOR, 1/1



SEDIMENT CONTROL MEASURES FOR THIS CONTRACT WILL BE IMPLEMENTED IN ACCORDANCE WITH SECTION 219 OF THE STANDARD SPECIFICATION AND FINAL ROAD CONSTRUCTION PLANS F-94-29

DEPARTMENT OF PUBLIC WORKS
HOWARD COUNTY, MD.

Director of Public Works
10/3/04

Chief Bureau of Utilities
10/3/04

LAND DESIGN ENGINEERING, INC.

8835 Columbia 100 Parkway
Suite N
Columbia, Maryland 21045
Phone: (410) 715-1070 (301) 596-3424



Designed	TJW
Drawn	WJ
Checked	RM
Date	

By	No.	REVISION	Date
LOE	1	Revise Number of Lots & Lot Numbers	2-12-76
LOE	2	Extend W-W - Clear Ridge Road	5-31-95
		Add 2" N - Northern Ct & along Lots 85 & 86	2-1-95
		Revised Waterline Northern Ct.	7/11/04
		Waterline Crossing Colonial Shifted North	

PLAN VIEW

600 SCALE MAP NO. 37 BLOCK NO. 4

LYNDWOOD MANOR
SECTION ONE AREA ONE

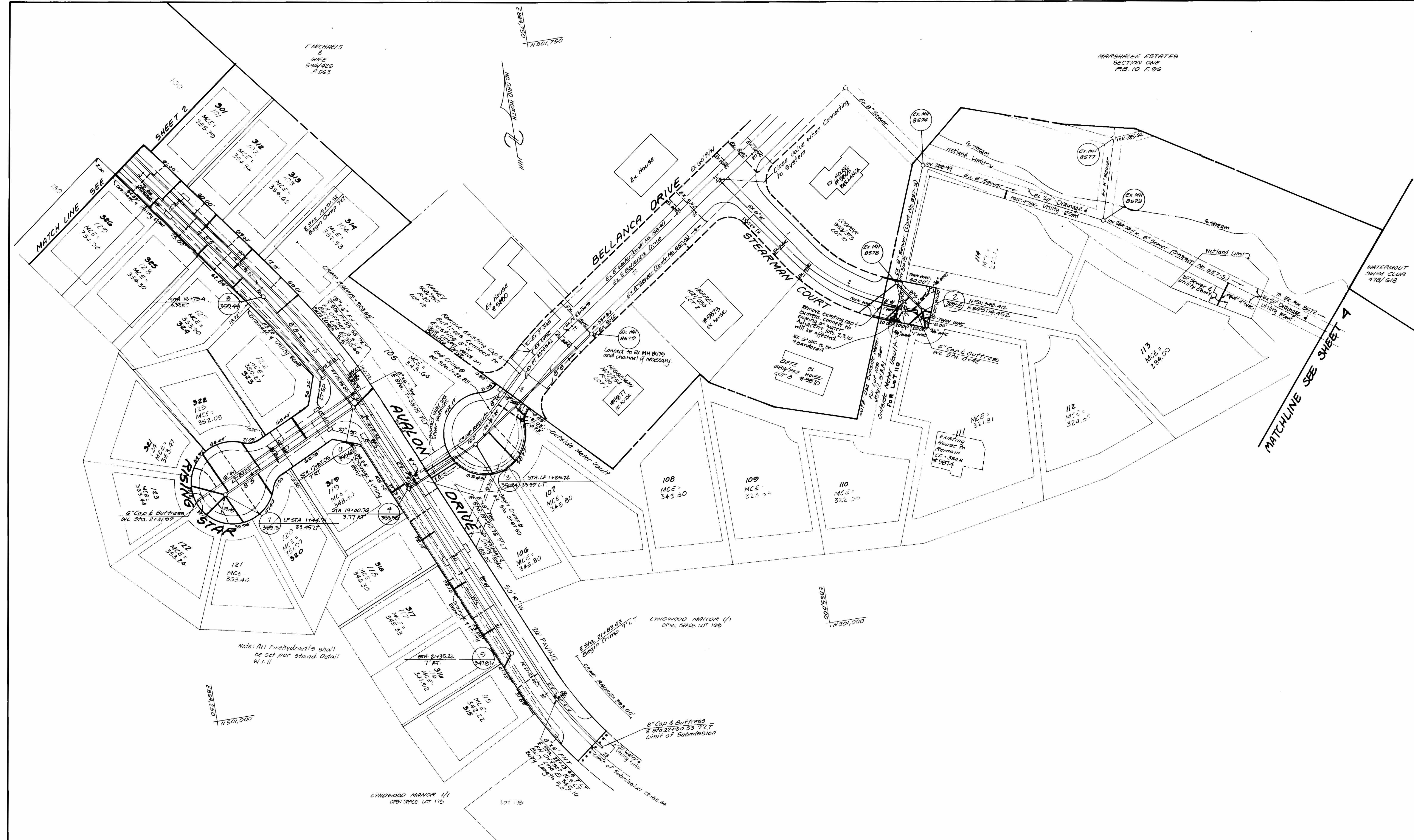
Lots: 64, 89, 105, 114, 121, 123, 141, 163, 178, 273, 336

1ST ELECTION DISTRICT HOWARD COUNTY, MARYLAND

CONTRACT NO 14-333AD

SCALE 1"=50'
SHEET 2 of 7

3334 W/S 3 LYNDWOOD MANOR 1/1

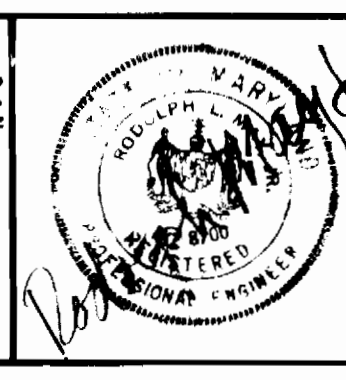


Note: All Firehydrants shall be set per stand Detail W 111

SEDIMENT CONTROL MEASURES FOR THIS CONTRACT WILL BE IMPLEMENTED IN ACCORDANCE WITH SECTION 210 OF THE STANDARD SPECIFICATION AND FINAL ROAD CONSTRUCTION PLANS: F-7A-09

DEPARTMENT OF PUBLIC WORKS
 HOWARD COUNTY, MD.
 Director of Public Works: [Signature] 10/3/94
 Chief Bureau of Engineering: [Signature]
 Chief Bureau of Utilities: [Signature] 9-27-94
 Chief Land Development Division: [Signature] 10/3/94

LAND DESIGN ENGINEERING, INC.
 8835 Columbia 100 Parkway
 Suite N
 Columbia, Maryland 21045
 Phone: (410) 715-1070 (301) 596-3424



Designed TD/WJ/SL	Checked RM	Date 2/94
Drawn WJ		
By	NO	
LD.E.	△	Revise Number of Lots & Lot Numbers
		REVISION
		Date 2-12-90

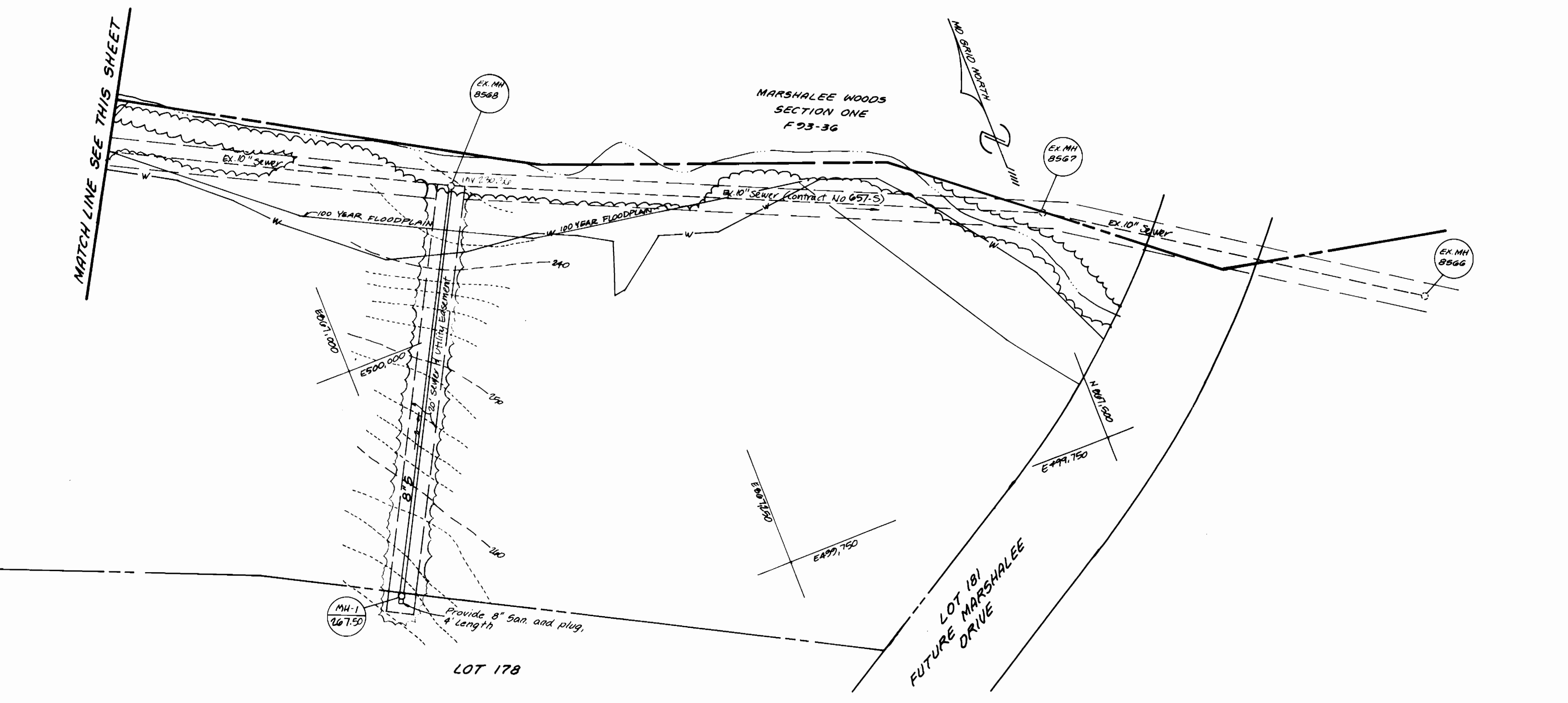
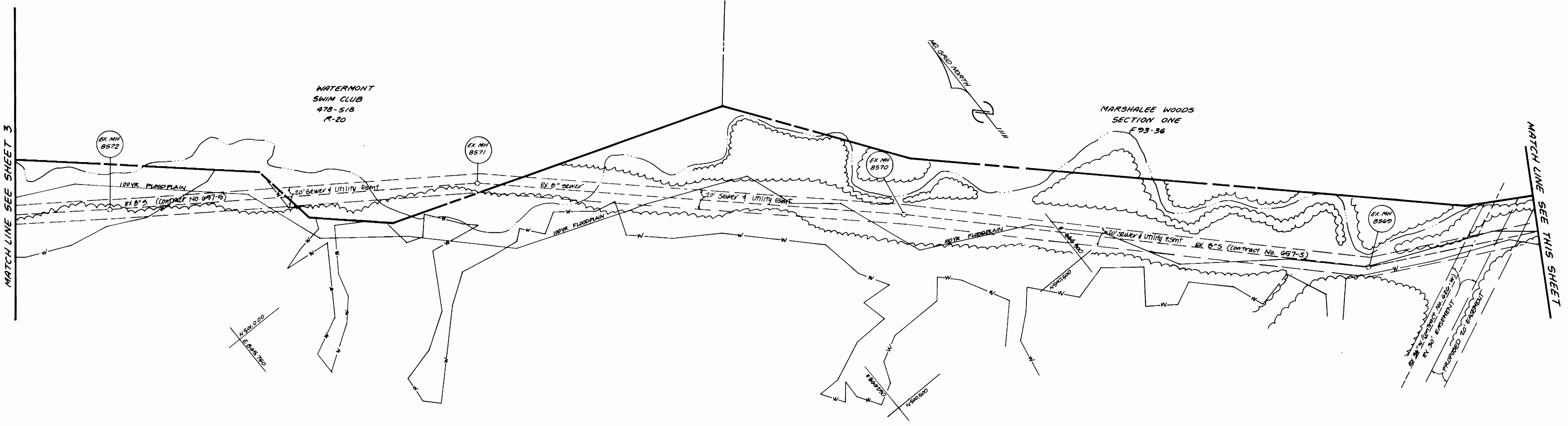
PLAN VIEW

600 SCALE MAP NO. 37 BLOCK NO. 4

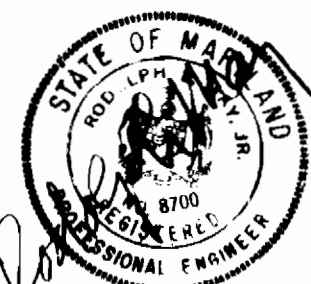
LYNDWOOD MANOR SECTION ONE AREA ONE
 Lots: 94, 99, 108-114, 121-123, 141-143, 178, 273-336
 1ST ELECTION DISTRICT HOWARD COUNTY, MARYLAND
 CONTRACT NO 14-3334 D

SCALE 1"=50'
 SHEET 3 OF 7

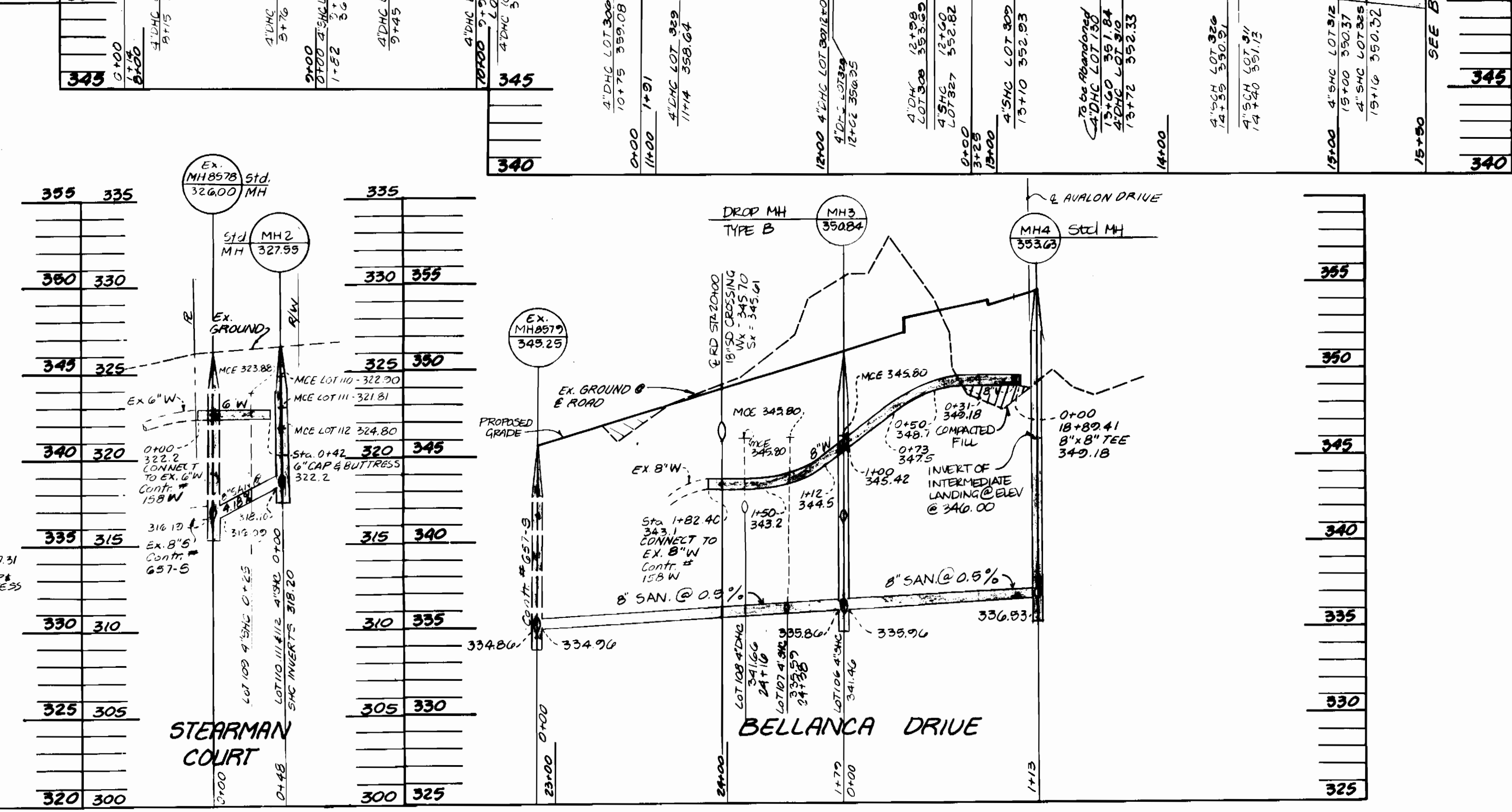
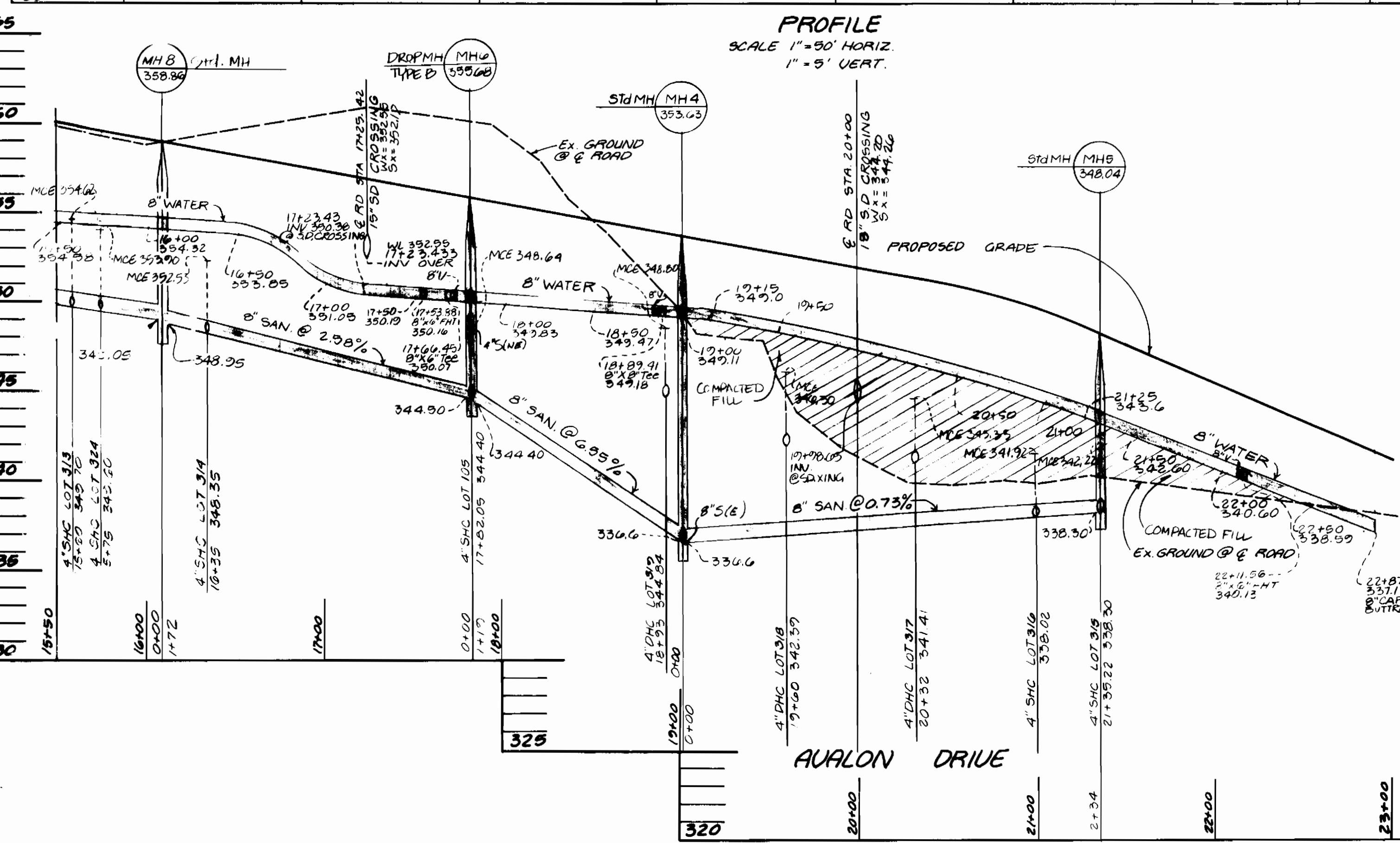
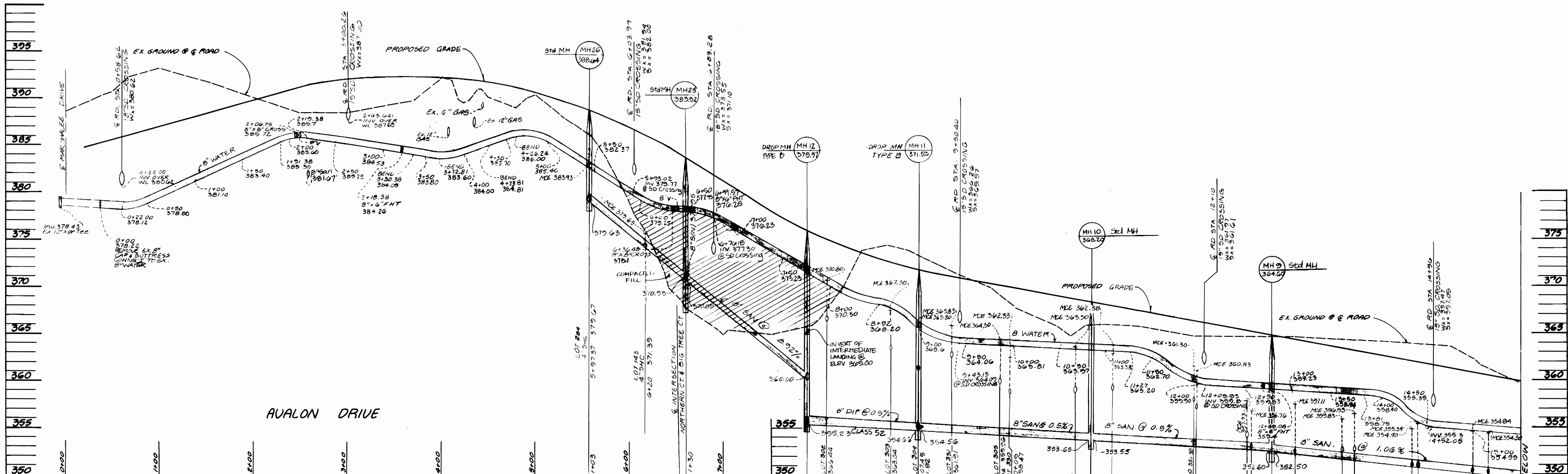
3334 w/s 4 LYNDWOOD MANOR, 1/1



SEDIMENT CONTROL MEASURES FOR THIS CONTRACT WILL BE IMPLEMENTED IN ACCORDANCE WITH SECTION 210 OF THE STANDARD SPECIFICATION AND FINAL ROAD CONSTRUCTION PLANS F-94-29

DEPARTMENT OF PUBLIC WORKS HOWARD COUNTY, MD. <i>James A. Shaw</i> 10/3/94 DIRECTOR OF PUBLIC WORKS DATE <i>Richard A. Williams</i> 9-27-94 CHIEF - BUREAU OF UTILITIES DATE		LAND DESIGN ENGINEERING, INC. 8225-N COLUMBIA 100 PARKWAY COLUMBIA, MARYLAND 21045 (410) 715-1070 (301) 996-3424 		Designed TO Drawn BL Checked RM Date 2-24-94		By No. REVISION Date		PLAN VIEW 600 SCALE MAP NO. 37 BLOCK NO. 4		LYNDWOOD MANOR SECTION ONE AREA ONE LOT 58 THRU LOT 181 1 ST ELECTION DISTRICT HOWARD COUNTY, MARYLAND CONTRACT NO. 14-3334D		SCALE 1"=50' SHEET 4 OF 7
--	--	---	--	---	--	----------------------	--	--	--	--	--	------------------------------------

3334 w/s 5 Lyndwood Manor 1/1



SEEDIMENT CONTROL MEASURES FOR THIS CONTRACT WILL BE IMPLEMENTED IN ACCORDANCE WITH SECTION 210 OF THE STANDARD SPECIFICATION AND FINAL ROAD CONSTRUCTION PLANS. F-9A-29

PROFILE SCALE 1" = 30' HORIZ. 1" = 5' VERT.

PROFILE SCALE 1" = 30' HORIZ. 1" = 5' VERT.

DEPARTMENT OF PUBLIC WORKS
HOWARD COUNTY, MD.
10/3/94
10/3/94

LAND DESIGN ENGINEERING, INC.
2825-N COLUMBIA 100 PARKWAY
COLUMBIA, MARYLAND 21049
(410) 715-1075 (301) 996-3424

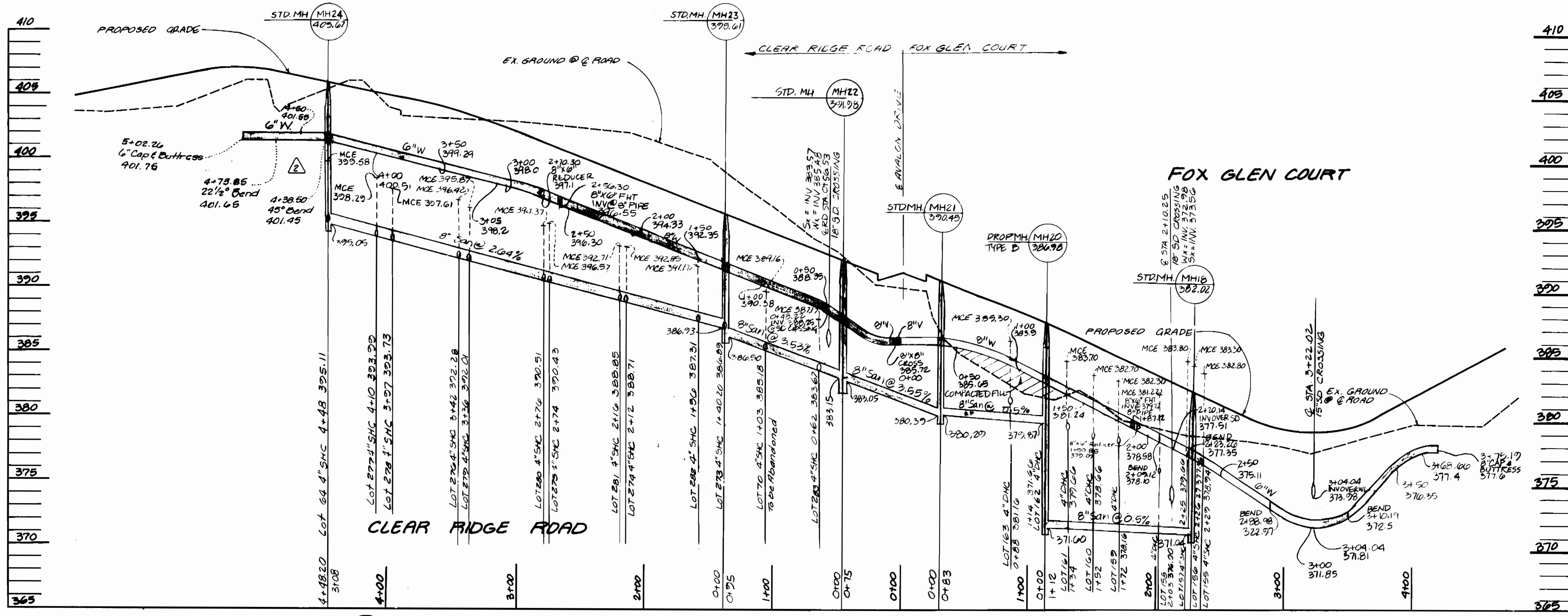
Designed TD/AL		
Drawn SD/WJ		
Checked RM		
Date 2/94		
By No.		
REVISION		

NO.	DESCRIPTION	DATE
1	Change Number of Lots & Lot Numbers	2-12-90
2	MH # (change 8" 5" (W) to 4" 6" (N.E))	4-7-93
3	Change MH 11 to Drop MH	2-1-95

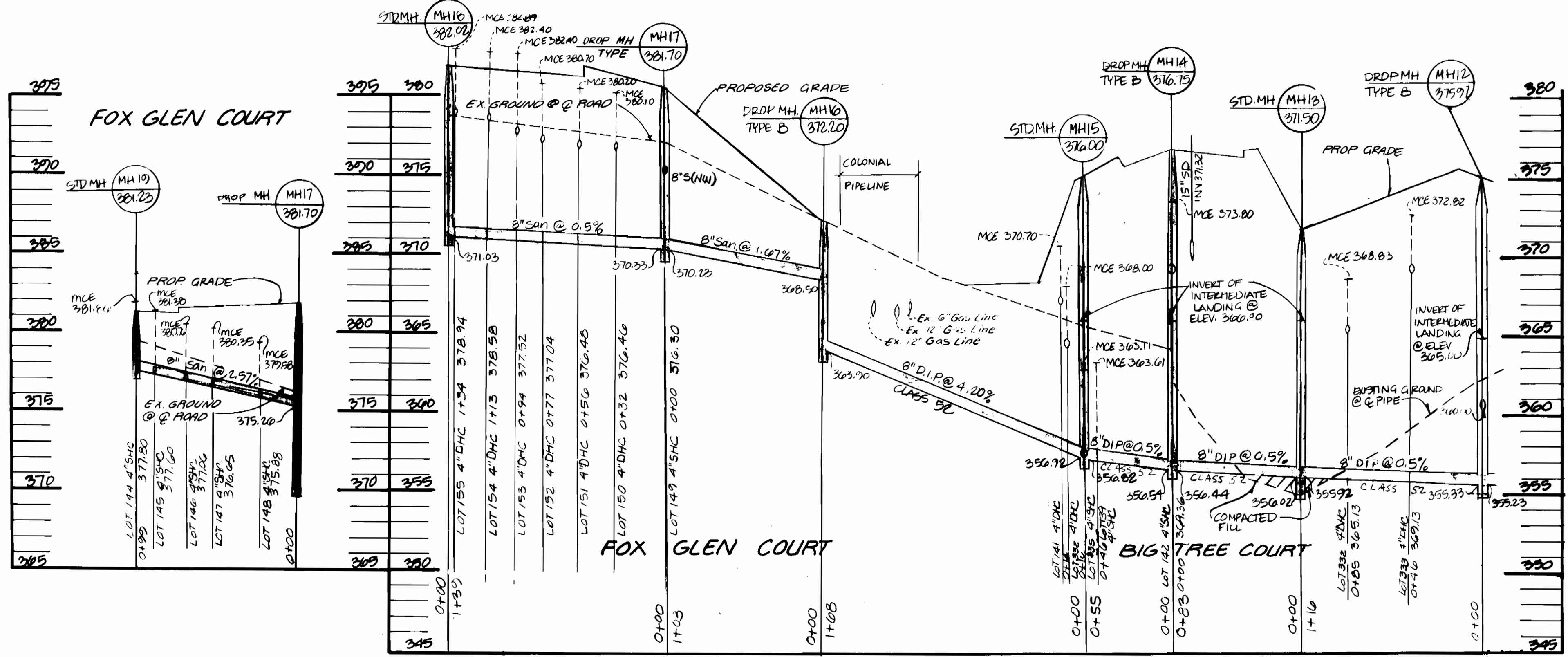
LYNDWOOD MANOR
SECTION ONE AREA ONE
Lots: 64, 89, 103, 114, 121, 123, 141, 163, 178, 273, 336
1ST ELECTION DISTRICT HOWARD COUNTY, MARYLAND
CONTRACT NO. 14-3334D

SCALE AS SHOWN
SHEET 5 OF 7

3334 W/S6 LYNDWOOD MANOR 1/1



PROFILE
SCALE 1" = 80' HORIZ.
1" = 5' VERT.

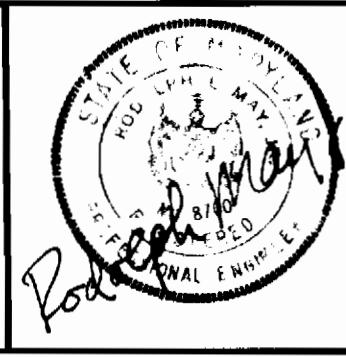


PROFILE
SCALE 1" = 50' HORIZ.
1" = 5' VERT.

SEDIMENT CONTROL MEASURES FOR THIS CONTRACT WILL BE IMPLEMENTED IN ACCORDANCE WITH SECTION 217 OF THE STANDARD SPECIFICATION AND FINAL ROAD CONSTRUCTION PLANS F-24-27

DEPARTMENT OF PUBLIC WORKS
HOWARD COUNTY, MD.
James A. Lee 10/3/94
DIRECTOR OF PUBLIC WORKS DATE
Michael A. Williams 9-27-94
CHIEF-BUREAU OF UTILITIES DATE

LAND DESIGN ENGINEERING INC.
8833-N COLUMBIA 100 PARKWAY
COLUMBIA, MARYLAND 21045
(410) 710-1070 (301) 526-3424

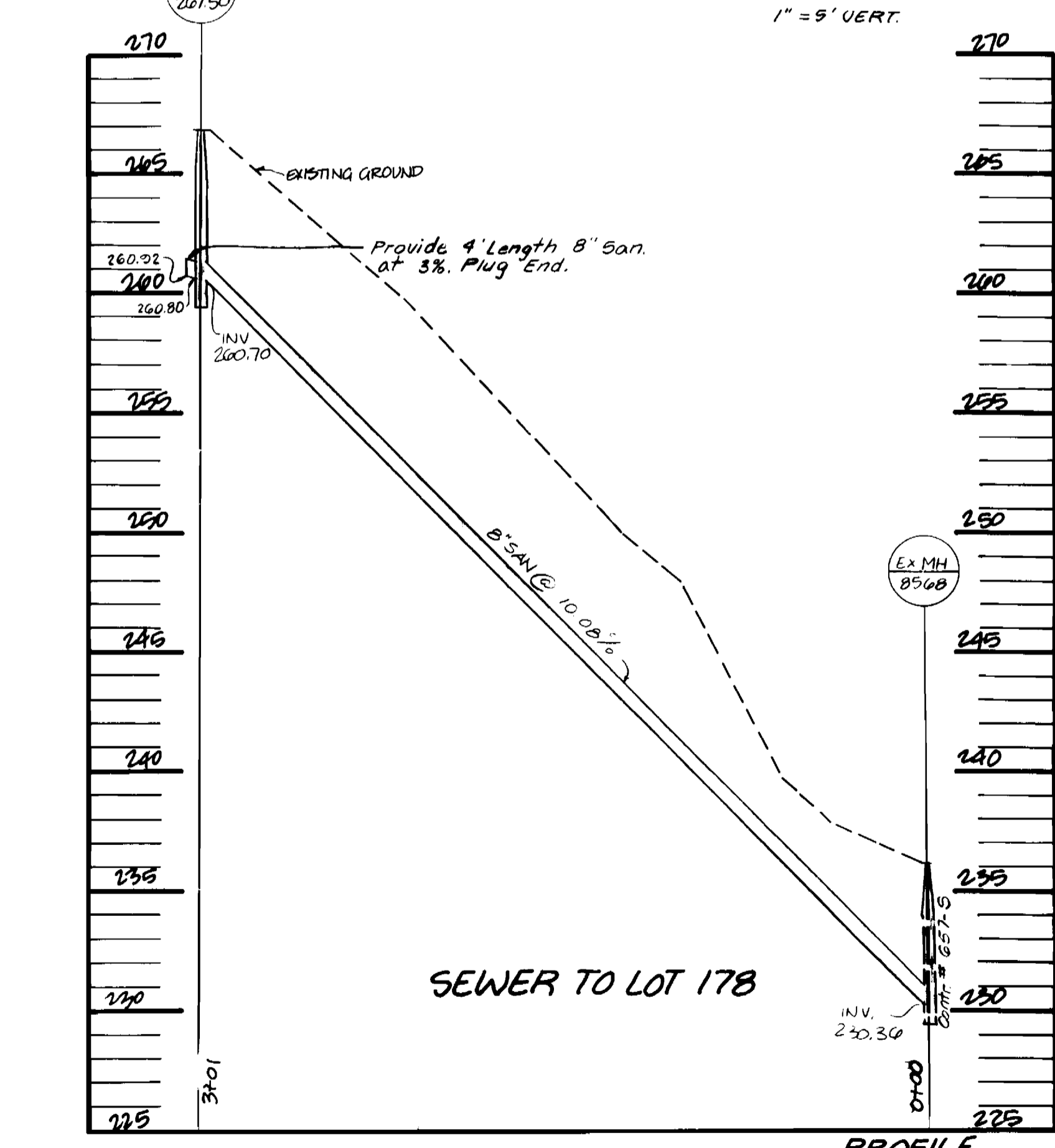
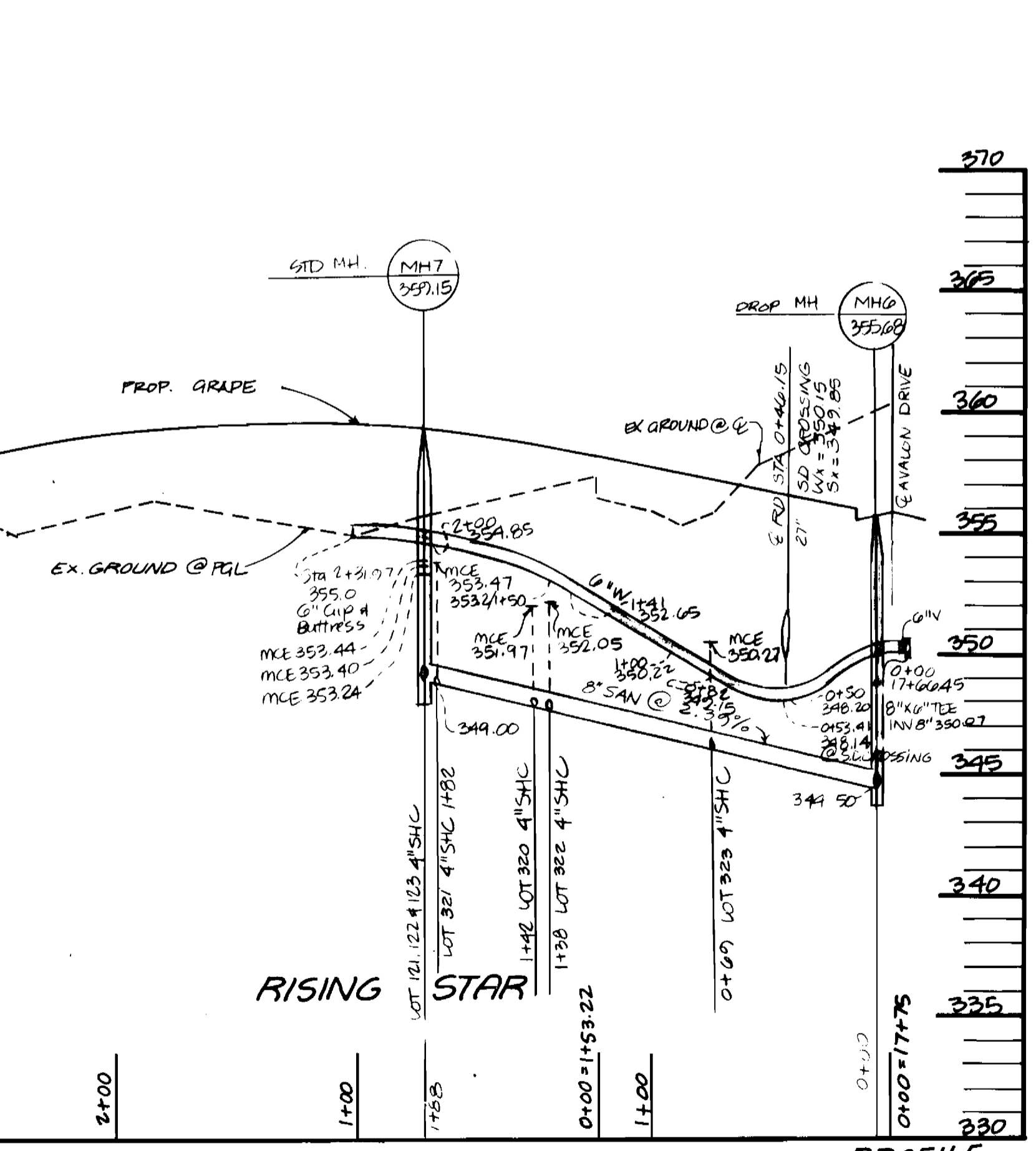
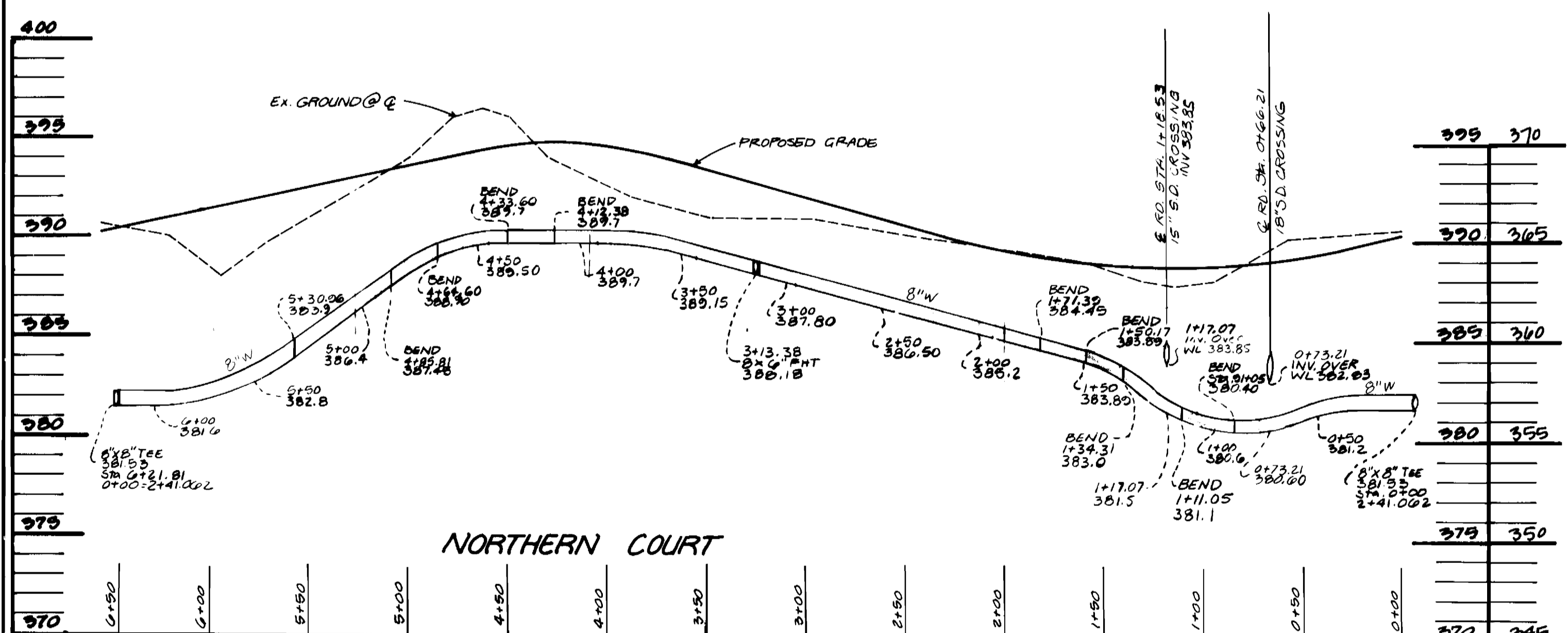
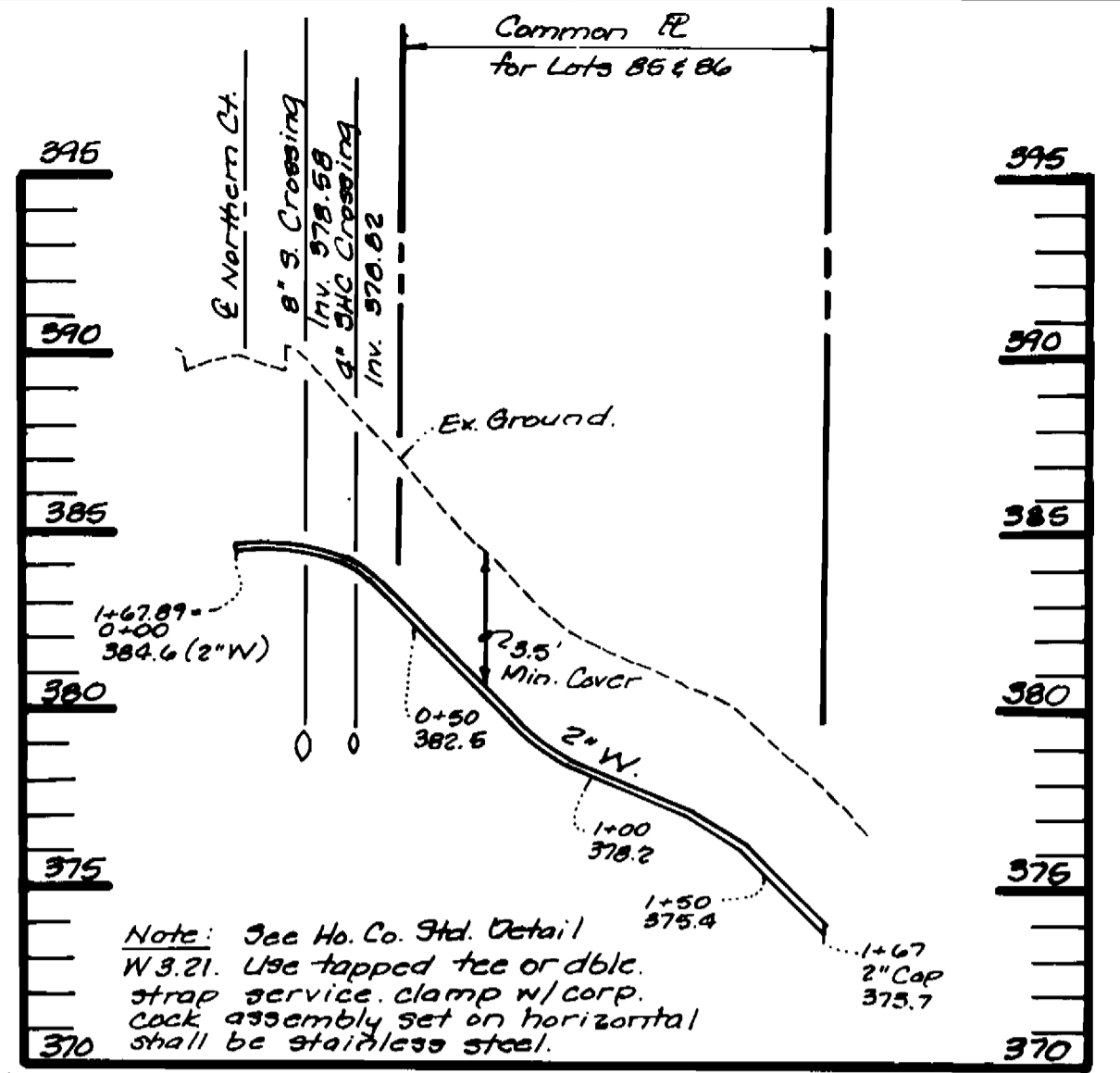
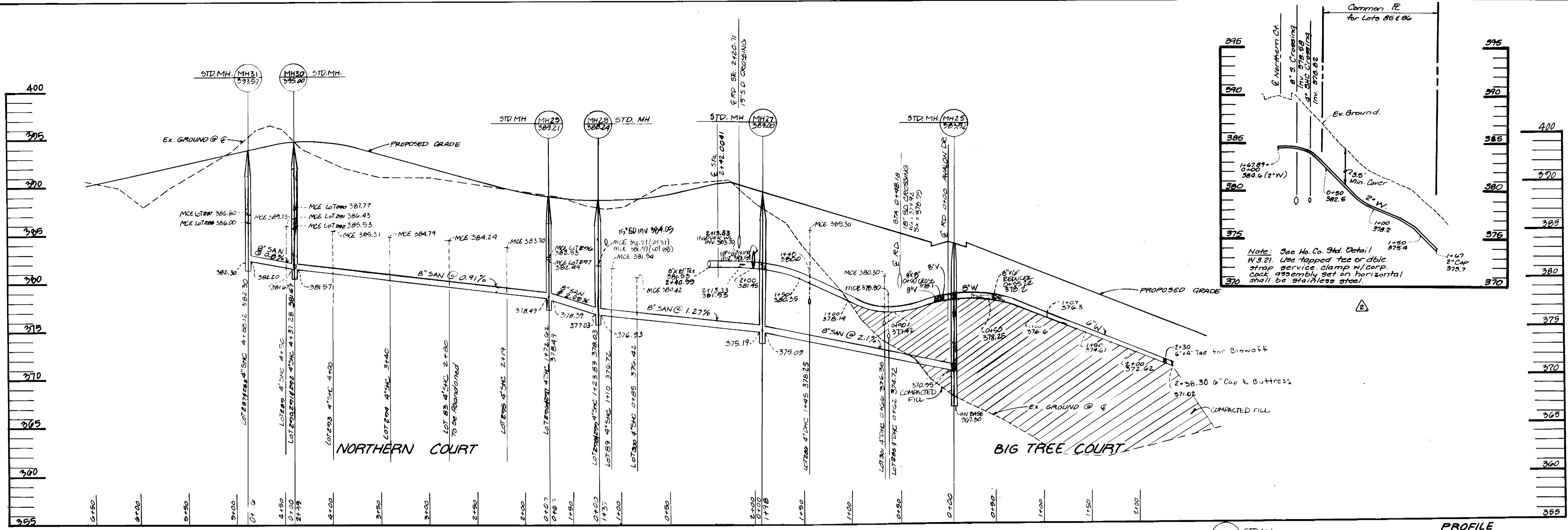


Designed	TJ/WJ				
Drawn	WT/SD	L.O.E.	△	Revise Number of Lots & Lot Numbers	2-12-70
Checked	RM	L.O.E.	△	Extend 6" W to Clear Ridge Rd Profile	5-31-75
Date	2/94	By	No	MH 17 - DROP.MH / LANDING 8" S&W 370.26	4-7-75
				Revised S&C Lot's 63-65. Change MH 17 to Drop MH	2-1-05
				REVISION	

PROFILES
900 SCALE MAP No. 37 BLOCK No. 4

LYNDWOOD MANOR
SECTION ONE AREA ONE
Lots: 64, 87, 103, 114, 121, 123, 141, 163, 178, 273, 330
1ST ELECTION DISTRICT HOWARD COUNTY, MARYLAND
CONTRACT No. 14-3334 D
SHEET 6 OF 7

3334 ws/7 LYNDWOOD MANOR, 1/1



SEDIMENT CONTROL MEASURES FOR THIS CONTRACT WILL BE IMPLEMENTED IN ACCORDANCE WITH SECTION 219 OF THE STANDARD SPECIFICATION AND FINAL ROAD CONSTRUCTION PLANS F24-29

DEPARTMENT OF PUBLIC WORKS
HOWARD COUNTY, MD.
Director of Public Works: [Signature]
Chief - Bureau of Engineering: [Signature]
Chief - Bureau of Utilities: [Signature]
Chief - Land Development: [Signature]

LAND DESIGN ENGINEERING, INC.
6835-N COLUMBIA 100 PARKWAY
COLUMBIA, MARYLAND 21045
(410) 719-1070 (501) 996-3424

Designed	Drawn	Checked	Date
TD/WJ	WJ/SD	RM	2/04

By	No	Date
LDE	1	2-12-04
LDE	2	5-31-95
MH46/STD. MH 50		4-7-95
Revised Waterline Northern Ct		2-1-95

LYNDWOOD MANOR
SECTION ONE AREA ONE
Lots: 64, 89, 103-114, 121-123, 141-163, 178, 273-330
18th ELECTION DISTRICT HOWARD COUNTY, MARYLAND
CONTRACT NO. 14-3334-D
SCALE AS SHOWN
9 SHEET
7 OF 7

AS-BLT

3334 LYNDWOOD MANOR / AS-BUILD INFO.

59	34' TO MH 23 29' TO WHC 59	28' TO SHC 69 38' TO SHC 60	98	19' TO F.H. 28' TO WHC 98	28' TO SHC 98 31' TO SHC 97	137	67' TO MH 13 48' TO MH 12	42' TO MH 25 96' TO MH 15
60	38' TO WHC 60 29' TO WHC 60	29' TO SHC 60 21' TO F.H.	99	11' TO WHC 99 34' TO WHC 100	11' TO SHC 99 31' TO MH 9	138	15' TO MH 15 12' TO BAW-OFF	NO DATA
61	11' TO F.H. 32' TO WHC 61	32' TO SHC 61 40' TO SHC 62	100	54' TO SHC 100 30' TO WHC 100	30' TO SHC 100 34' TO SHC 99	139	15' TO MH 15 9' TO SHC 140	NO DATA
62	40' TO WHC 61 25' TO WHC 62	23' TO SHC 62 34' TO SHC 63	101	29' TO WHC 101 39' TO WHC 102	29' TO SHC 101 51' TO WHC 129	140	9' TO SHC 139 23' TO SHC 141	NO DATA
63	34' TO WHC 62 42' TO WHC 63	42' TO SHC 63 58' TO MH 24	102	20' TO WHC 102 36' TO WHC 103	20' TO SHC 102 39' TO SHC 101	141	18' TO MH 15 23' TO SHC 140	28' TO SHC 142 33' TO WHC 140
64	10' TO WHC 64 50' TO MH 24	10' TO SHC 64 76' TO WHC 63	103	24' TO WHC 103 47' TO WHC 104	24' TO SHC 103 36' TO SHC 102	142	28' TO WHC 141 26' TO WHC 142	24' TO SHC 142 79' TO WHC 143
65	34' TO WHC 65 36' TO WHC 66	34' TO SHC 65 47' TO MH 24	104	29' TO WHC 104 40' TO MH 8	29' TO SHC 104 47' TO SHC 103	143	42' TO WHC 143 55' TO S.D. MH	42' TO SHC 143 79' TO WHC 142
66	20' TO WHC 66 37' TO WHC 67	20' TO SHC 66 36' TO SHC 65	105	53' TO MH 6 25' TO F.H.	11' TO F.H.	144	31' TO MH 19 7' TO WHC 144	7' TO SHC 144 8' TO WHC 145
67	25' TO WHC 67 40' TO WHC 68	25' TO SHC 67 37' TO SHC 66	106	47' TO MH 3 32' TO SHC 107	34' TO MH 4 70' TO MH 3	145	14' TO WHC 145 15' TO SHC 146	14' TO SHC 145 8' TO WHC 144
68	20' TO WHC 68 40' TO WHC 69	20' TO SHC 68 40' TO SHC 67	107	32' TO SHC 106 9' TO WHC 107	9' TO SHC 107 39' TO WHC 108	146	16' TO SHC 145 9' TO WHC 146	9' TO SHC 146 6' TO WHC 147
69	21' TO WHC 69 25' TO MH 23	40' TO SHC 69 25' TO SHC 69	108	5' TO WHC 108 18' TO S.D. INLET	5' TO SHC 108 39' TO WHC 107	147	15' TO WHC 147 19' TO WHC 148	13' TO SHC 147 6' TO WHC 146
70	28' TO WHC 70 23' TO MH 23	23' TO MH 23 28' TO SHC 70	109	49' TO EX MH 4' TO WHC 109	4' TO SHC 109 3' TO WHC 110	148	18' TO WHC 148 28' TO MH 17	18' TO SHC 148
71	14' TO WHC 71 26' TO MH 22	14' TO SHC 71 24' TO SHC 70	110	16' TO WHC 110 30' TO SHC 111	16' TO SHC 110 3' TO WHC 109	149	12' TO MH 17 25' TO WHC 149	25' TO SHC 149 22' TO SHC 150
72	56' TO WHC 72 39' TO MH 26	75' TO MH 26 56' TO SHC 72	111	30' TO SHC 110	NO DATA	150	21' TO WHC 149 12' TO WHC 150	12' TO SHC 150 7' TO WHC 151
73	15' TO S.D. INLET 39' TO WHC 73	39' TO SHC 73 49' TO SHC 74	112	32' TO WHC 113 2' TO WHC 112	2' TO SHC 112	151	11' TO WHC 151 15' TO SHC 152	11' TO SHC 151 7' TO WHC 150
74	49' TO WHC 73 25' TO WHC 74	25' TO SHC 74 36' TO MH 27	113	170' TO EX MH 8573 236' TO EX MH 8572	32' TO SHC 112 6' TO WHC 114	152	15' TO SHC 151 18' TO WHC 152	10' TO SHC 152 7' TO WHC 153
75	52' TO MH 31 31' TO WHC 75	31' TO SHC 75 28' TO WHC 76	114	106' TO EX MH 8594 118' TO EX MH 8593	49' TO EX MH 8578 6' TO WHC 113	153	12' TO WHC 153 10' TO SHC 154	12' TO SHC 153 7' TO WHC 152
76	22' TO WHC 76 22' TO WHC 77	22' TO SHC 76 36' TO MH 31	115	22' TO MH 5 32' TO WHC 115	32' TO SHC 115 49' TO F.H. VALVE	154	10' TO SHC 153 13' TO WHC 154	13' TO SHC 154 8' TO WHC 155
77	27' TO WHC 77 17' TO WHC 78	27' TO SHC 77 22' TO SHC 76	116	25' TO WHC 116 45' TO SHC 115	25' TO SHC 116 41' TO SHC 117	155	8' TO WHC 155 41' TO SHC 156	8' TO SHC 155 8' TO WHC 154
78	17' TO SHC 77 4' TO WHC 78	4' TO SHC 78 17' TO SHC 77	117	41' TO WHC 116 13' TO WHC 117	13' TO SHC 117 62' TO SHC 118	156	16' TO SHC 155 8' TO WHC 156	8' TO SHC 156 7' TO WHC 157
79	10' TO SHC 78 3' TO WHC 79	3' TO SHC 79 10' TO SHC 78	118	42' TO WHC 117 25' TO WHC 118	25' TO SHC 118 43' TO SHC 119	157	13' TO WHC 157 16' TO SHC 158	13' TO SHC 157 7' TO WHC 156
80	19' TO MH 30 6' TO WHC 80	6' TO SHC 80 17' TO SHC 79	119	22' TO MH 4 43' TO WHC 118	55' TO MH 6 90' TO SHC 120	158	14' TO SHC 157 19' TO WHC 158	19' TO SHC 158 9' TO WHC 159
81	20' TO WHC 81 39' TO WHC 82	20' TO SHC 81 39' TO SHC 80	120	90' TO WHC 119 29' TO WHC 120	29' TO SHC 120 22' TO SHC 121	159	11' TO WHC 159 12' TO SHC 160	11' TO SHC 159 9' TO WHC 158
82	21' TO WHC 82 14' TO F.H.	21' TO SHC 82 39' TO SHC 81	121	22' TO WHC 120 18' TO WHC 121	18' TO SHC 121 31' TO SHC 122	160	12' TO SHC 159 12' TO WHC 160	12' TO SHC 160 7' TO WHC 161
83	23' TO WHC 83 28' TO F.H.	23' TO SHC 83 28' TO F.H.	122	31' TO WHC 121 7' TO WHC 122	7' TO SHC 122 26' TO WHC 123	161	12' TO WHC 161 7' TO SHC 162	12' TO SHC 161 7' TO WHC 160
84	16' TO WHC 84 26' TO WHC 85	16' TO SHC 84 46' TO SHC 83	123	9' TO WHC 123 26' TO WHC 124	9' TO SHC 123 26' TO WHC 122	162	7' TO SHC 161 19' TO WHC 162	19' TO SHC 162 6' TO WHC 163
85	19' TO MH 29 31' TO WHC 85	31' TO SHC 85 26' TO SHC 84	124	21' TO WHC 124 20' TO WHC 125	21' TO SHC 124 25' TO SHC 123	163	15' TO WHC 163 55' TO MH 21	15' TO SHC 163 6' TO WHC 162
86	25' TO MH 29 10' TO WHC 86	10' TO SHC 86 18' TO SHC 85	125	30' TO WHC 125 44' TO WHC 126	30' TO SHC 125 20' TO SHC 124			
87	22' TO WHC 87 10' TO SHC 88	22' TO SHC 87 47' TO SHC 86	126	24' TO WHC 126 77' TO MH 6	24' TO SHC 126 44' TO SHC 125			
88	10' TO SHC 87 31' TO WHC 88	31' TO SHC 88 14' TO WHC 89	127	42' TO MH 8 31' TO WHC 127	31' TO SHC 127 28' TO SHC 128			
89	9' TO WHC 89 27' TO SHC 90	9' TO SHC 89 14' TO WHC 88	128	28' TO WHC 127 31' TO WHC 128	31' TO SHC 128 50' TO SHC 129			
90	54' TO S.D. INLET 27' TO SHC 89	28' TO MH 27 91' TO WHC 91	129	50' TO WHC 128 27' TO WHC 129	27' TO SHC 129 51' TO WHC 101			
91	57' TO F.H. 25' TO WHC 91	25' TO SHC 91 91' TO WHC 90	130	56' TO SHC 100 36' TO WHC 130	36' TO SHC 130			
92	33' TO WHC 92 30' TO WHC 93	33' TO SHC 92 46' TO MH 12	131	36' TO MH 9 25' TO WHC 131	25' TO SHC 131 30' TO SHC 132			
93	34' TO WHC 93 19' TO WHC 94	34' TO SHC 93 30' TO SHC 92	132	30' TO WHC 131 43' TO WHC 132	43' TO SHC 132 42' TO SHC 133			
94	33' TO MH 11 13' TO WHC 94	13' TO SHC 94 19' TO SHC 93	133	42' TO WHC 132 30' TO MH 10	41' TO SHC 133 87' TO SHC 134			
95	19' TO WHC 95 50' TO WHC 96	19' TO SHC 95 74' TO SHC 94	134	57' TO WHC 133 32' TO WHC 134	32' TO SHC 134 35' TO SHC 135			
96	35' TO MH 10 35' TO WHC 96	35' TO SHC 96 50' TO SHC 95	135	35' TO WHC 134 44' TO MH 11	22' TO MH 11 62' TO WHC 136			
97	38' TO WHC 97 31' TO WHC 98	38' TO SHC 97 76' TO MH 10	136	30' TO MH 13 87' TO MH 12	39' TO MH 12 62' TO WHC 135			

DEPARTMENT OF PUBLIC WORKS
HOWARD COUNTY, MARYLAND

DIRECTOR OF PUBLIC WORKS DATE CHIEF, BUREAU OF ENGINEERING DATE

DES:				
DRN:				
CHK:				
DATE:	BY	NO.	REVISION	DATE

SEWER & WATER
AS-BUILTS

LYNDWOOD MANOR

SECTION ONE AREA ONE
LOT 58 THRU LOT 181
CONTRACT NO. 14-3334-D

SCALE
AS
SHOWN

SHEET
7A OF 7