

PUBLIC WATER AND SEWER EXTENSIONS

WYNDEMERE SECTION TWO

6th ELECTION DISTRICT HOWARD COUNTY, MARYLAND

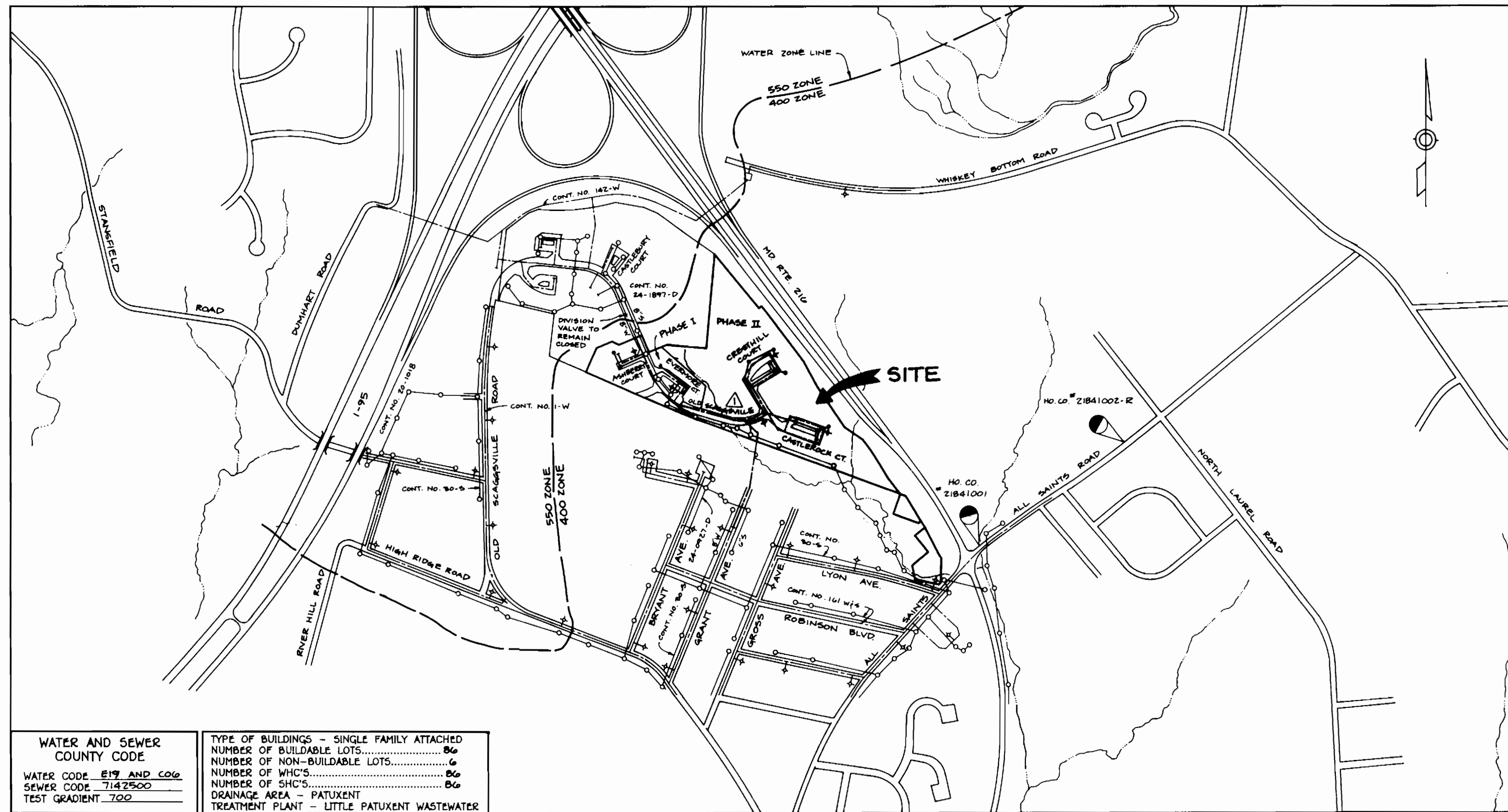
CONTRACT No. 24-3329-D PHASE TWO

BENCH MARKS

HO. CO. #21841001	ELEV. 228.136
R.B. 0.4' BELOW SURFACE	
N 468156.503	E 841854.328
HO. CO. #21841002-R	ELEV. 256.929
CONC. MONUMENT 1' ± E. OF CONC. CURB AND 3' ± S. OF C.B. 0.6' BELOW SURF.	
N 468957.312	E 843025.754

LEGEND

EXIST. WATER MAIN	
EXIST. SEWER MAIN	
EXIST. SEWER MANHOLE	
PROP. WATER MAIN	
PROP. SEWER MAIN	
PROP. STORM DRAIN (BY OTHERS)	
PROP. SEWER MANHOLE	
PROP. SEWER HOUSE CONNECTION	
PROP. WATER HOUSE CONNECTION (DOUBLE - 1 1/2")	
PROP. WATER HOUSE CONNECTION (SINGLE - 1")	
PROP. FIRE HYDRANT	
PROP. VALVE	
PROP. PLUG & BUTTRESS	



QUANTITIES				
ITEMS	QUANTITIES ESTIMATED	AS-BUILT		
		QUANTITIES	TYPE	MANUF./SUPPLIER
8" WATER	3,819 L.F.	2,777 L.F.	DIP	GRIFFIN PIPE
8" VALVES	13 EA.	82 L.F.	DIP	GRIFFIN PIPE
FIRE HYDRANTS	9 EA.	11 EA.	CAST IRON	HUEBNER CO.
1 1/2" VHC	899 L.F.	1032 L.F.	TYPE "K"	CAMBRIDGE-LEE
2" VHC	480 L.F.	443 L.F.	TYPE "K"	CAMBRIDGE-LEE
8" SEWER	1,819 L.F.	1,780 L.F.	2" H. HSG.	ATLANTIC
4" SHC	2,085 L.F.	2,075	PVC	U-M HFG.

NAME OF UTILITY CONTRACTOR: UTILITIES UNLIMITED, INC.
SURVEY & DRAFTING DIVISION AS-BUILT DATE

SHEET INDEX	
No.	DESCRIPTION
1	TITLE SHEET
2	PLAN OF WATER AND SEWER MAINS
3	PLAN OF WATER AND SEWER MAINS
4	PROFILES OF WATER AND SEWER MAINS
5	PROFILES OF WATER AND SEWER MAINS
6	PROFILES OF WATER AND SEWER MAINS

WATER AND SEWER COUNTY CODE	TYPE OF BUILDINGS - SINGLE FAMILY ATTACHED
WATER CODE 819 AND C&G	NUMBER OF BUILDBLE LOTS..... 86
SEWER CODE 7142500	NUMBER OF NON-BUILDBLE LOTS..... 6
TEST GRADIENT 7.00	NUMBER OF WHOS..... 86
	NUMBER OF SHCS..... 86
	DRAINAGE AREA - PATUXENT
	TREATMENT PLANT - LITTLE PATUXENT WASTEWATER

VICINITY MAP
SCALE: 1" = 600'

NOTE:
ALL WATER HOUSE CONNECTIONS SHALL BE 1-INCH WITH A 3/4-INCH METER, DUE TO MANDATORY SPRINKLER SYSTEM FOR MULTI-FAMILY DWELLING UNITS. TWIN WATER HOUSE CONNECTIONS SHALL BE 1 1/2-INCH WITH 2 1/2-INCH CONNECTIONS.

- GENERAL NOTES**
- PART 1 - GENERAL**
- APPROXIMATE LOCATION OF EXISTING MAINS ARE SHOWN. THE CONTRACTOR SHALL TAKE ALL NECESSARY PRECAUTIONS TO PROTECT EXISTING MAINS AND SERVICES AND MAINTAIN UNINTERRUPTED SUPPLY. ANY DAMAGE INCURRED SHALL BE REPAIRED IMMEDIATELY TO THE SATISFACTION OF THE ENGINEER AT THE CONTRACTOR'S EXPENSE.
 - ALL HORIZONTAL CONTROLS ARE BASED ON MARYLAND STATE COORDINATES.
 - ALL VERTICAL CONTROLS ARE BASED ON U.S.G.S. DATA.
 - ALL PIPE ELEVATIONS SHOWN ARE INVERT ELEVATIONS.
 - CLEAR ALL UTILITIES BY A MINIMUM OF 6". CLEAR ALL POLES BY 2'-0" MINIMUM OR TUNNEL AS REQUIRED. THE OWNER HAS CONTACTED THE UTILITY COMPANIES AND HAS MADE ARRANGEMENTS FOR BRACING OF POLES AS SHOWN ON THE DRAWINGS. IN THE EVENT THE CONTRACTOR'S WORK REQUIRES THE BRACING OF ADDITIONAL POLES, ANY COST INCURRED BY THE OWNER FOR BRACING OF ADDITIONAL POLES OR DAMAGES SHALL BE DEDUCTED FROM MONEY OWED THE CONTRACTOR. THE CONTRACTOR SHALL COORDINATE WITH THE UTILITY COMPANIES TO SCHEDULE THE BRACING OF THE POLES.
 - FOR DETAILS NOT SHOWN ON THE DRAWINGS, AND FOR MATERIALS AND CONSTRUCTION METHODS USE HOWARD COUNTY DESIGN MANUAL, VOLUME IV, STANDARD SPECIFICATIONS AND DETAIL FOR CONSTRUCTION (LATEST EDITION). THE CONTRACTOR SHALL HAVE A COPY OF VOLUME IV ON THE JOB.
 - WHERE TEST PITS HAVE BEEN MADE ON EXISTING UTILITIES, THEY ARE NOTED BY THE SYMBOL AT THE LOCATION OF THE TEST PIT. A NOTE OR NOTES CONTAINING THE RESULTS OF THE TEST PIT OR PITS IS INCLUDED ON THE DRAWINGS. EXISTING UTILITIES IN THE VICINITY OF THE PROPOSED WORK FOR WHICH TEST PITS HAVE NOT BEEN DUG SHALL BE LOCATED BY THE CONTRACTOR TWO WEEKS IN ADVANCE OF CONSTRUCTION OPERATIONS AT HIS OWN EXPENSE. CONTRACTOR SHALL NOTIFY THE FOLLOWING UTILITY COMPANIES OR AGENCIES AT LEAST FIVE WORKING DAYS BEFORE STARTING WORK SHOWN ON THESE PLANS:
 - STATE HIGHWAY ADMINISTRATION.....531-5533
 - BALTIMORE GAS & ELECTRIC CO.....850-4620
 - BALTIMORE GAS & ELECTRIC CO.....787-9068
 - MISS UTILITY.....1-800-257-7777
 - COLONIAL PIPELINE CO.....795-1390
 - HOWARD CO. DEPT. OF PUBLIC WORKS.....313-4900
 - BUREAU OF UTILITIES.....313-4900
 - TREES AND SHRUBS ARE TO BE PROTECTED FROM DAMAGE TO MAXIMUM EXTENT. TREES AND SHRUBS LOCATED WITHIN THE CONSTRUCTION STRIP ARE NOT TO BE REMOVED OR DAMAGED BY THE CONTRACTOR. CONTRACTOR SHALL REMOVE TREES, STUMPS AND ROOTS ALONG LINE OF EXCAVATION. PAYMENT FOR SUCH REMOVAL SHALL BE INCLUDED IN THE UNIT PRICE BID FOR CONSTRUCTION OF THE MAIN.
 - PLACE REGULATION "MEN WORKING" AND WARNING SIGNS AS REQUIRED TO COMPLY WITH MARYLAND STATE HIGHWAY ADMINISTRATION MANUAL OF TRAFFIC CONTROL FOR HIGHWAY MAINTENANCE OPERATIONS.
 - THE CONTRACTOR SHALL NOTIFY THE BUREAU OF HIGHWAYS, HOWARD COUNTY, AT (410) 313-2450 AT LEAST FIVE WORKING DAYS BEFORE ANY OPEN CUT OF ANY COUNTY ROAD OR BORING/JACKING OPERATION IN COUNTY ROADS FOR LAYING WATER/SEWER MAINS OR HOUSE CONNECTIONS. THE APPROVAL OF THESE DRAWINGS WILL CONSTITUTE COMPLIANCE WITH DPW REQUIREMENTS PER SECTION 18.114(c) OF THE HOWARD COUNTY CODE.
- PART 2 - WATER**
- ALL WATER MAINS TO BE D.I.P. CLASS 52 UNLESS OTHERWISE NOTED.
 - TOPS OF ALL WATER MAINS TO HAVE A MINIMUM OF 3-1/2" COVER UNLESS OTHERWISE NOTED.
 - VALVES ADJACENT TO TEE'S SHALL BE STRAPPED TO TEE'S.
 - ALL FITTINGS SHALL BE BUTTRESSED OR ANCHORED WITH CONCRETE IN ACCORDANCE WITH THE STANDARD DETAILS UNLESS OTHERWISE PROVIDED FOR ON THE DRAWINGS.
 - FIRE HYDRANTS SHALL BE SET TO THE BURY LINE ELEVATIONS SHOWN ON THE DRAWINGS. ALL FIRE HYDRANTS SHALL BE RESTRAINED AND BUTTRESSED WITH CONCRETE IN ACCORDANCE WITH STANDARD DETAILS. SOIL AROUND THE FIRE HYDRANT SHALL BE COMPACTED IN ACCORDANCE WITH SECTION 1000 AND 1005 OF THE STANDARD SPECIFICATIONS.
 - ALL WATER HOUSE CONNECTIONS SHALL BE FOR INSIDE METER SETTING UNLESS OTHERWISE NOTED ON PLANS OR IN SPECIFICATIONS.
 - RESERVE REDUCING VALVES TO BE PROVIDED ON ALL WATER HOUSE CONNECTIONS.
- PART 3 - SEWER**
- ALL SEWER MAINS SHALL BE DIP, RCP, VOPX, CSPX, RCP AND P.V.C. UNLESS OTHERWISE NOTED.
 - ALL MANHOLES SHALL BE 4' - 0" INSIDE DIAMETER UNLESS OTHERWISE NOTED.
 - FORCE MAINS SHALL BE D.I.P. ONLY.
 - MANHOLES SHOWN WITH 12" AND 18" WALLS ARE FOR BRICK MANHOLES ONLY.
 - MANHOLES DESIGNATED W.T. IN PLAN AND PROFILE SHALL HAVE WATER-TIGHT FRAME AND COVERS, STANDARD DETAIL 65.52, WHERE WATER-TIGHT MANHOLE FRAME AND COVER IS USED. SET TOP OF FRAME 1" - 6" ABOVE FINISHED GRADE UNLESS OTHERWISE NOTED ON THE DRAWINGS.
 - HOUSES WITH THE SYMBOL "C.N.S." INDICATES THAT CELLAR CANNOT BE SERVED.

HOWARD SOIL CONSERVATION DISTRICT:
REVIEWED FOR HOWARD SOIL CONSERVATION DISTRICT
AND MEETS TECHNICAL REQUIREMENTS

J. McWright 6/16/94
U.S. SOIL CONSERVATION SERVICE DATE

THIS PLAN IS APPROVED FOR SOIL EROSION AND SEDIMENT CONTROL BY THE HOWARD SOIL CONSERVATION DISTRICT.

John R. Blanton 6/16/94
HOWARD SOIL CONSERVATION DISTRICT DATE

SEDIMENT CONTROL MEASURES FOR THIS CONTRACT WILL BE IMPLEMENTED IN ACCORDANCE WITH SECTION 219 OF THE HOWARD COUNTY STANDARD SPECIFICATIONS AND AS PER ROAD CONSTRUCTION PLANS F-94-35

DEPARTMENT OF PUBLIC WORKS
HOWARD COUNTY, MARYLAND

James J. Allen 6/22/94
DIRECTOR OF PUBLIC WORKS DATE

Robert J. DeLeon 6/22/94
CHIEF, BUREAU OF ENGINEERING DATE

Robert J. DeLeon 6-15-94
CHIEF, BUREAU OF UTILITIES DATE

Robert J. DeLeon 6/22/94
CHIEF, LAND DEVELOPMENT DIVISION DATE

TSA GROUP, INC.

planning • engineering • surveying
8480 Baltimore National Pike • Suite 418
Ellicott City, Maryland 21043

John G. Gough

DES: JME, DRK	PBT	REVISIONS PER DEPT. OF NATURAL RESOURCES DAM CONSTRUCTION PERMIT REQUIREMENTS	9-9-94
DRN: DRK, DBT	HWH	SEPARATE PROJECT INTO TWO CONTRACTS - PHASE I AND PHASE II	2-8-95
CHK: JME		SEWER & WATER AS-BUILTS (SHEET 6A)	2-7-96
DATE: 2/7/94			
DATE: 5/6/94	BY NO.	REVISIONS	DATE

TITLE SHEET

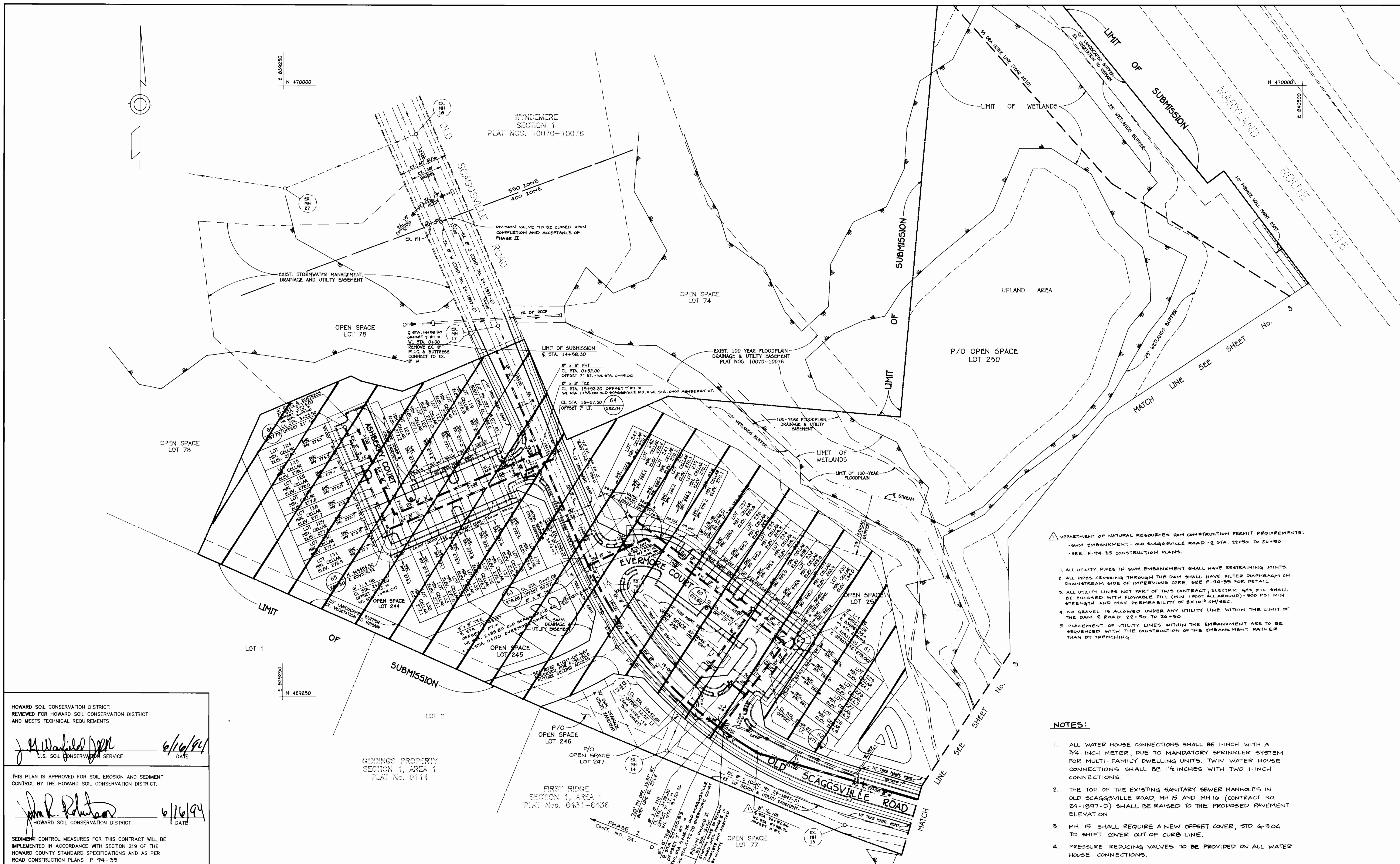
600 SCALE MAP NO. 47 BLOCKS 19 & 20

WYNDEMERE
SECTION 2 PHASE II
LOTS 140-225 AND 244-250
ELECTION DISTRICT NO. 6
CONTRACT NO. 24-3329-D

SCALE AS SHOWN
SHEET 1 OF 6

AS-BUILT 2-7-96 sect. 2 lots 119-252 WYNDEMERE ws/1 3329

3329 WS/2 WYNDEMERE



- DEPARTMENT OF NATURAL RESOURCES DAM CONSTRUCTION PERMIT REQUIREMENTS:
- SWM EMBANKMENT - OLD SCAGGSVILLE ROAD - STA. 22+50 TO 26+50.
 - SEE F-94-35 CONSTRUCTION PLANS.
1. ALL UTILITY PIPES IN SWM EMBANKMENT SHALL HAVE RESTRAINING JOINTS.
 2. ALL PIPES CROSSING THROUGH THE DAM SHALL HAVE FILTER DIAPHRAGM ON DOWNSTREAM SIDE OF IMPERVIOUS CORE. SEE F-94-35 FOR DETAIL.
 3. ALL UTILITY LINES NOT PART OF THIS CONTRACT; ELECTRIC, GAS, ETC. SHALL BE ENCASED WITH FLOWABLE FILL (MIN. 1 FOOT ALL AROUND) - 900 PSI MIN. STRENGTH AND MAX PERMEABILITY OF 8x10⁻⁶ CM/SEC.
 4. NO GRAVEL IS ALLOWED UNDER ANY UTILITY LINE WITHIN THE LIMIT OF THE DAM STA. 22+50 TO 26+50.
 5. PLACEMENT OF UTILITY LINES WITHIN THE EMBANKMENT ARE TO BE SEQUENCED WITH THE CONSTRUCTION OF THE EMBANKMENT RATHER THAN BY TRENCHING.

- NOTES:
1. ALL WATER HOUSE CONNECTIONS SHALL BE 1-INCH WITH A 3/4-INCH METER, DUE TO MANDATORY SPRINKLER SYSTEM FOR MULTI-FAMILY DWELLING UNITS. TWIN WATER HOUSE CONNECTIONS SHALL BE 1 1/2-INCHES WITH TWO 1-INCH CONNECTIONS.
 2. THE TOP OF THE EXISTING SANITARY SEWER MANHOLES IN OLD SCAGGSVILLE ROAD, MH 15 AND MH 16 (CONTRACT NO. 24-1897-D) SHALL BE RAISED TO THE PROPOSED PAVEMENT ELEVATION.
 3. MH 15 SHALL REQUIRE A NEW OFFSET COVER, STD. G-5.04 TO SHIFT COVER OUT OF CURB LINE.
 4. PRESSURE REDUCING VALVES TO BE PROVIDED ON ALL WATER HOUSE CONNECTIONS.

HOWARD SOIL CONSERVATION DISTRICT:
REVIEWED FOR HOWARD SOIL CONSERVATION DISTRICT
AND MEETS TECHNICAL REQUIREMENTS

J. M. Washfield 6/16/94
U.S. SOIL CONSERVATION SERVICE DATE

THIS PLAN IS APPROVED FOR SOIL EROSION AND SEDIMENT
CONTROL BY THE HOWARD SOIL CONSERVATION DISTRICT.

John P. Robinson 6/16/94
HOWARD SOIL CONSERVATION DISTRICT DATE

SEDIMENT CONTROL MEASURES FOR THIS CONTRACT WILL BE
IMPLEMENTED IN ACCORDANCE WITH SECTION 219 OF THE
HOWARD COUNTY STANDARD SPECIFICATIONS AND AS PER
ROAD CONSTRUCTION PLANS F-94-35

DEPARTMENT OF PUBLIC WORKS
HOWARD COUNTY, MARYLAND

James J. Lane 6/22/94 *Robert J. Ryan* 6/22/94
DIRECTOR OF PUBLIC WORKS DATE CHIEF, BUREAU OF ENGINEERING DATE

Robert J. Ryan 6-15-94 *William J. McQuinn* 6/16/94
CHIEF, BUREAU OF UTILITIES DATE CHIEF, LAND DEVELOPMENT DIVISION DATE

TSA GROUP, INC.
planning • engineering • surveying
8480 Baltimore National Pike • Suite 418
Ellicott City, Maryland 21043

John G. Goring

DES: JME, DRK	DBT	REVISIONS PER DEPT. OF NATURAL RESOURCES DAM CONSTRUCTION PERMIT REQUIREMENTS	9-9-94
DRN: DRK, DBT		SEPARATE PROJECT INTO TWO CONTRACTS-PHASE I AND PHASE II	2-8-95
CHK: JME			
DATE: 5/7/94			
DATE: 5/20/94	BY NO.	REVISIONS	DATE

PLAN OF
WATER & SEWER MAINS

600 SCALE MAP NO. 47

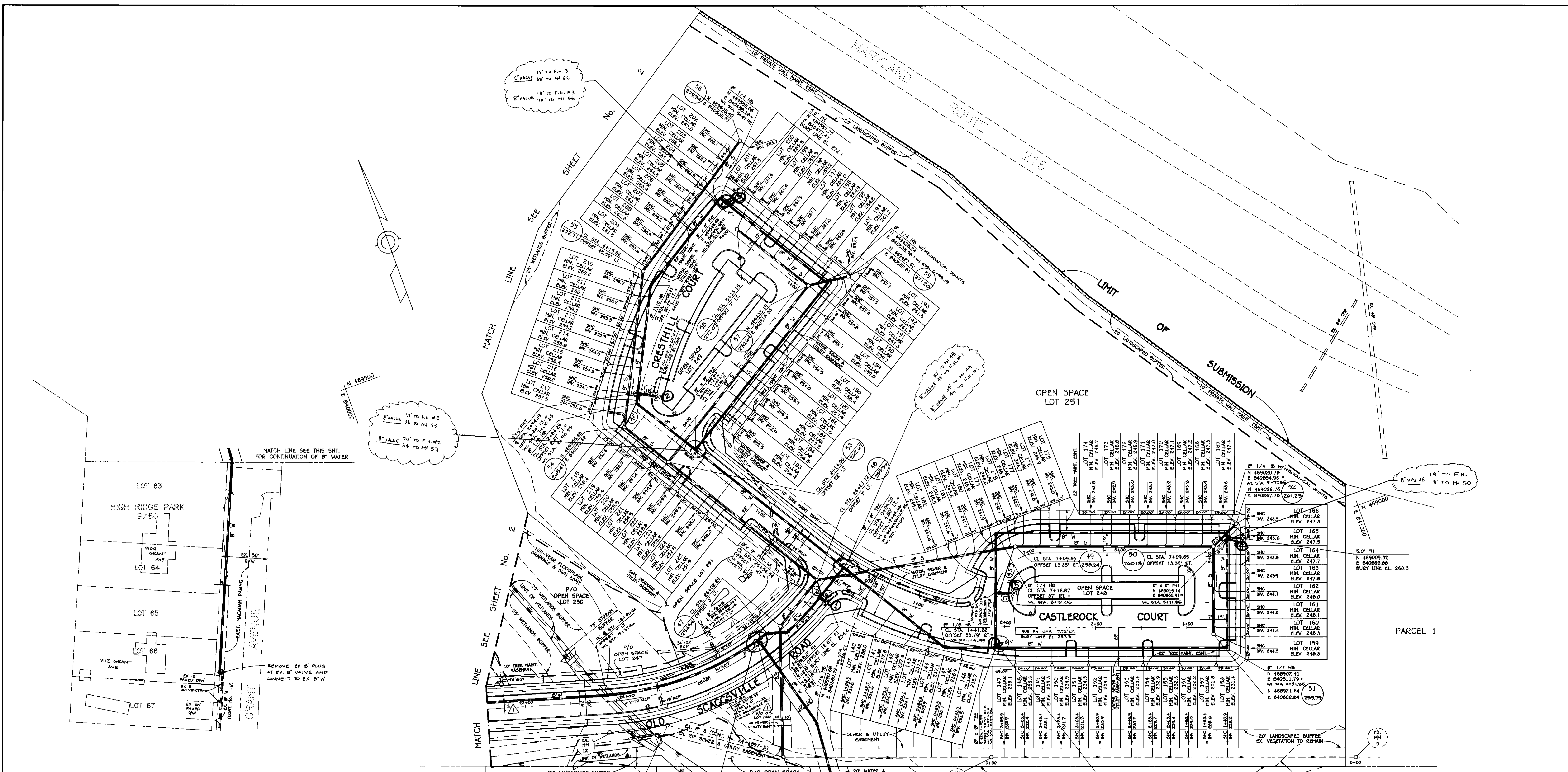
WYNDEMERE
SECTION 2 PHASE II
LOTS 140-225 & 244-250
ELECTION DISTRICT NO. 6

CONTRACT NO. 24-3329-D

SCALE
1" = 50'

SHEET
2 OF 6

3329 WS/3 WYNDEMERE



HOWARD SOIL CONSERVATION DISTRICT:
REVIEWED FOR HOWARD SOIL CONSERVATION DISTRICT
AND MEETS TECHNICAL REQUIREMENTS

J. A. Wainfield / JMW
U.S. SOIL CONSERVATION SERVICE
DATE: 6/16/94

THIS PLAN IS APPROVED FOR SOIL EROSION AND SEDIMENT CONTROL BY THE HOWARD SOIL CONSERVATION DISTRICT.

John P. Robinson
HOWARD SOIL CONSERVATION DISTRICT
DATE: 6/14/94

SEDIMENT CONTROL MEASURES FOR THIS CONTRACT WILL BE IMPLEMENTED IN ACCORDANCE WITH SECTION 219 OF THE HOWARD COUNTY STANDARD SPECIFICATIONS AND AS PER ROAD CONSTRUCTION PLANS F-94-35

- NOTES:**
- ALL WATER HOUSE CONNECTIONS SHALL BE 1-INCH WITH A 3/4-INCH METER, DUE TO MANDATORY SPRINKLER SYSTEM FOR MULTI-FAMILY DWELLING UNITS. TWIN WATER HOUSE CONNECTIONS SHALL BE 1/2-INCHES WITH TWO 1-INCH CONNECTIONS.
 - PRESSURE REDUCING VALVES TO BE PROVIDED ON ALL WATER HOUSE CONNECTIONS.
 - THE TOP OF EXISTING MANHOLES MH-11 AND MH-12 ARE TO BE RAISED TO ELEV. 250.00 WITH WATER TIGHT CONNECTION AND MANHOLE FRAME AND COVER. CONTRACTOR SHALL REPAIR MANHOLES IF REQUIRED TO ENSURE WATER TIGHTNESS.
 - THE EXISTING 8" SEWER MAIN BETWEEN EX MH-11 AND MH-12 SHALL BE EXCAVATED AND ENCASED, 1 MIN. ALL AROUND, WITH FLOWABLE FILL (500 PSI MIN. STRENGTH AND MAX PERMEABILITY OF 8 x 10⁻⁶ CM/SEC). BACKFILL AT 95% COMPACTION.

FIRST RIDGE
SECTION 1, AREA 1
PLAT Nos. 8431-8438

SHC CHART EXIST. 8" S

LOT NO	MN @ MAIN	LOT NO	MN @ MAIN
140	255.6	150	251.3
141	255.5	151	250.9
142	255.4	152	250.5
143	255.3	153	249.8
144	255.2	154	249.3
145	255.1	155	249.0
146	255.0	156	248.6
147	254.5	157	248.2
148	254.0	158	247.8
149	251.7		

DEPARTMENT OF PUBLIC WORKS
HOWARD COUNTY, MARYLAND

TSA GROUP, INC.
planning • engineering • surveying
8480 Baltimore National Pike • Suite 418
Ellicott City, Maryland 21043

Robert W. Berman / RWB
DIRECTOR OF PUBLIC WORKS
DATE: 6-15-94

Robert W. Berman / RWB
CHIEF, BUREAU OF ENGINEERING
DATE: 6/21/94

Robert W. Berman / RWB
CHIEF, LAND DEVELOPMENT DIVISION
DATE: 6/21/94

DES: JME, DRK	DBT	REVISIONS PER DEPT OF NATURAL RESOURCES DAY CONSTRUCTION PERMIT REQUIREMENTS	9-9-94
DRN: DRK, DBT		SEPARATE PROJECT INTO TWO CONTRACTS - PHASE I AND PHASE II	2-8-95
CHK: JME			
DATE: 3/7/94	BY NO.	REVISIONS	DATE
5/20/94			

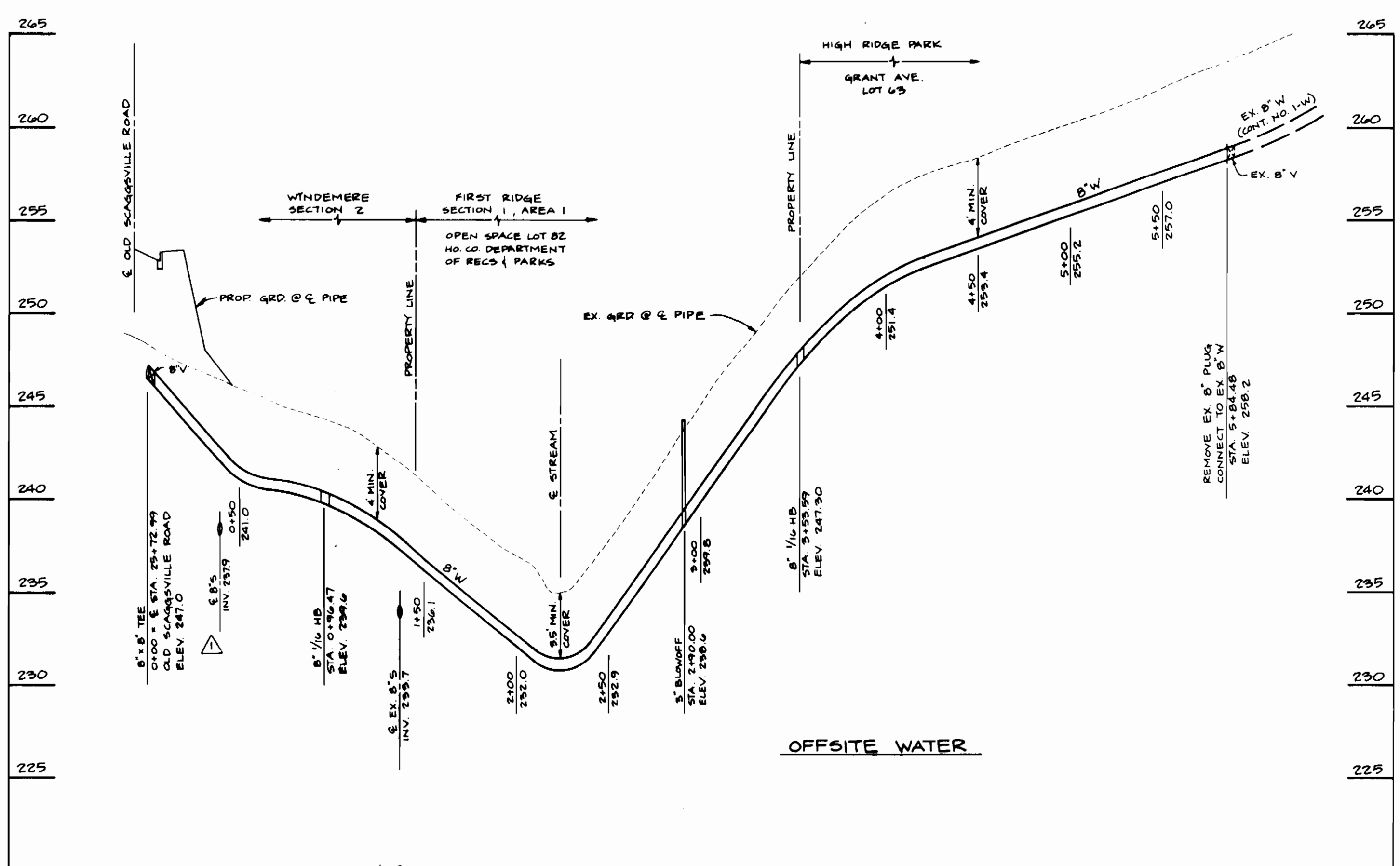
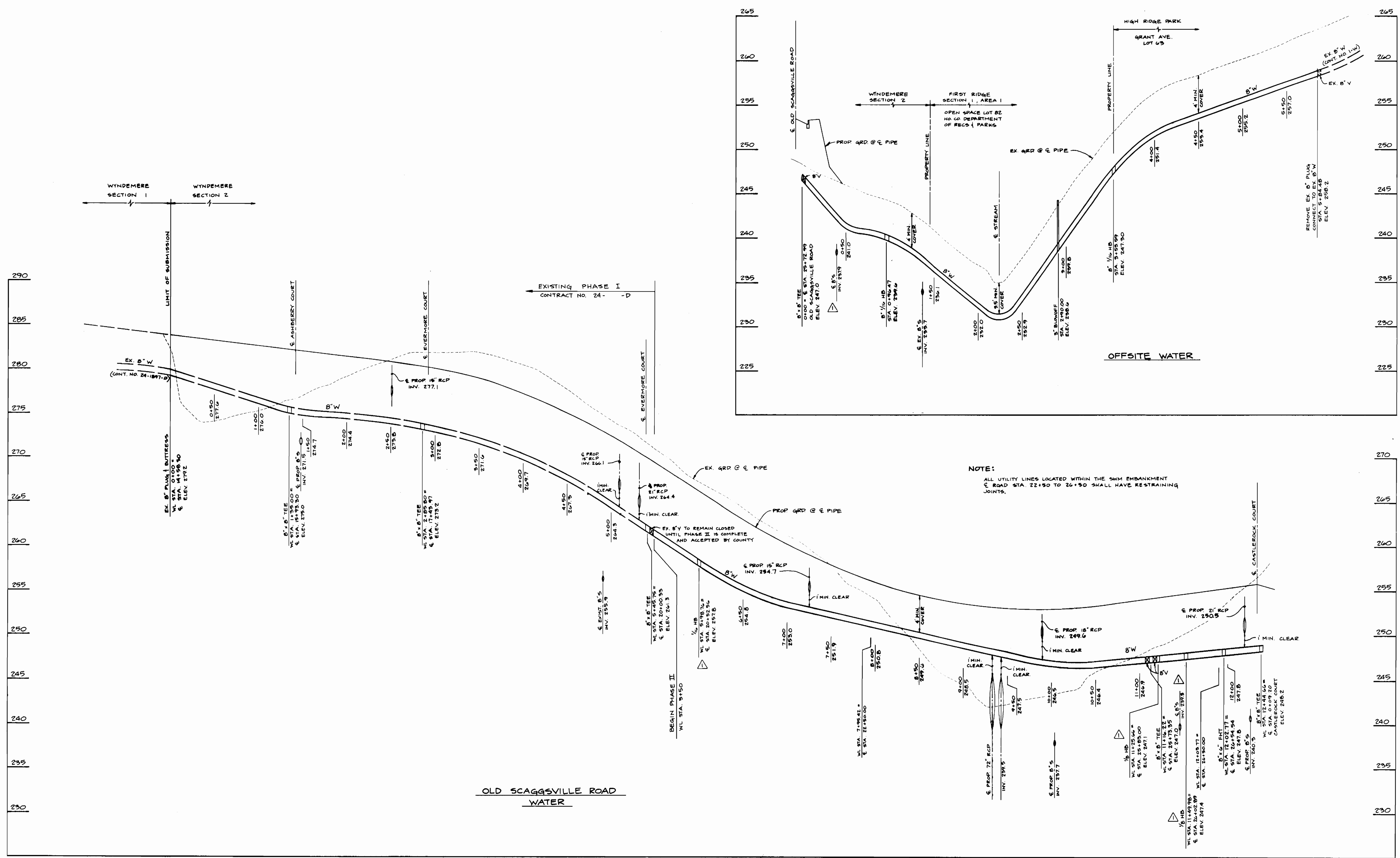
PLAN OF
WATER & SEWER MAINS

600 SCALE MAP NO. 47
BLOCKS 19 & 20

WYNDEMERE
SECTION 2 PHASE II
LOTS 140-225 AND 244-252
ELECTION DISTRICT NO. 6
CONTRACT NO. 24-3329-D

SCALE
1" = 50'
SHEET
3 OF 6

3329 W3/4 WYNDEMERE



NOTE:
ALL UTILITY LINES LOCATED WITHIN THE SWM EMBANKMENT
P. ROAD STA. 22+50 TO 26+50 SHALL HAVE RESTRAINING
JOINTS.

DEPARTMENT OF PUBLIC WORKS
HOWARD COUNTY, MARYLAND

TSA GROUP, INC.

planning • engineering • surveying
8480 Baltimore National Pike • Suite 418
Ellicott City, Maryland 21043

Director of Public Works: *[Signature]* Date: 6/22/94
Chief, Bureau of Engineering: *[Signature]* Date:
Chief, Bureau of Utilities: *[Signature]* Date: 6-15-94
Chief, Land Development Division: *[Signature]* Date:

DES: JME, DRK	DBT	REVISIONS PER DEPT. OF NATURAL RESOURCES DAM CONSTRUCTION PERMIT REQUIREMENTS	9-9-94
DRN: DBT		SEPARATE PROJECT INTO TWO CONTRACTS - PHASE I & PHASE II	8-8-95
CHK: JME			
DATE: 3/7/94			
5/20/94	BY NO.	REVISIONS	DATE

PROFILES OF
WATER & SEWER MAINS

600 SCALE MAP NO. 47 BLOCKS 19 & 20

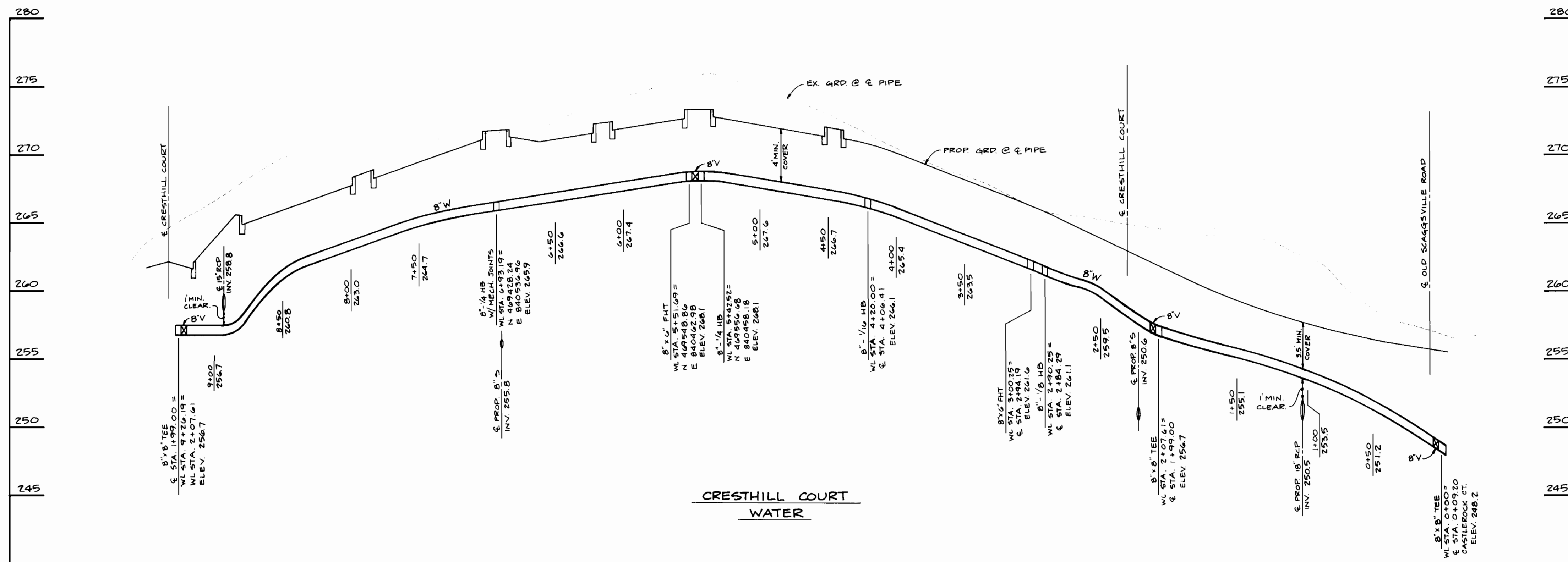
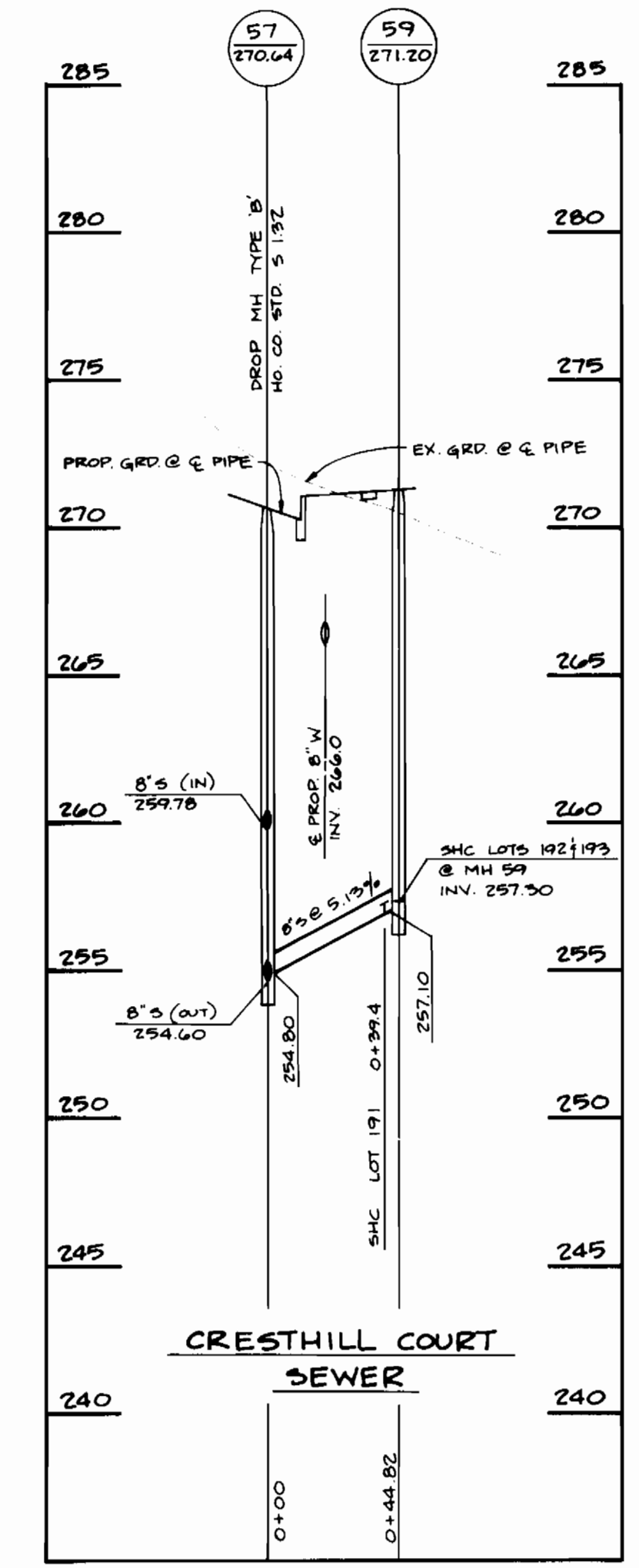
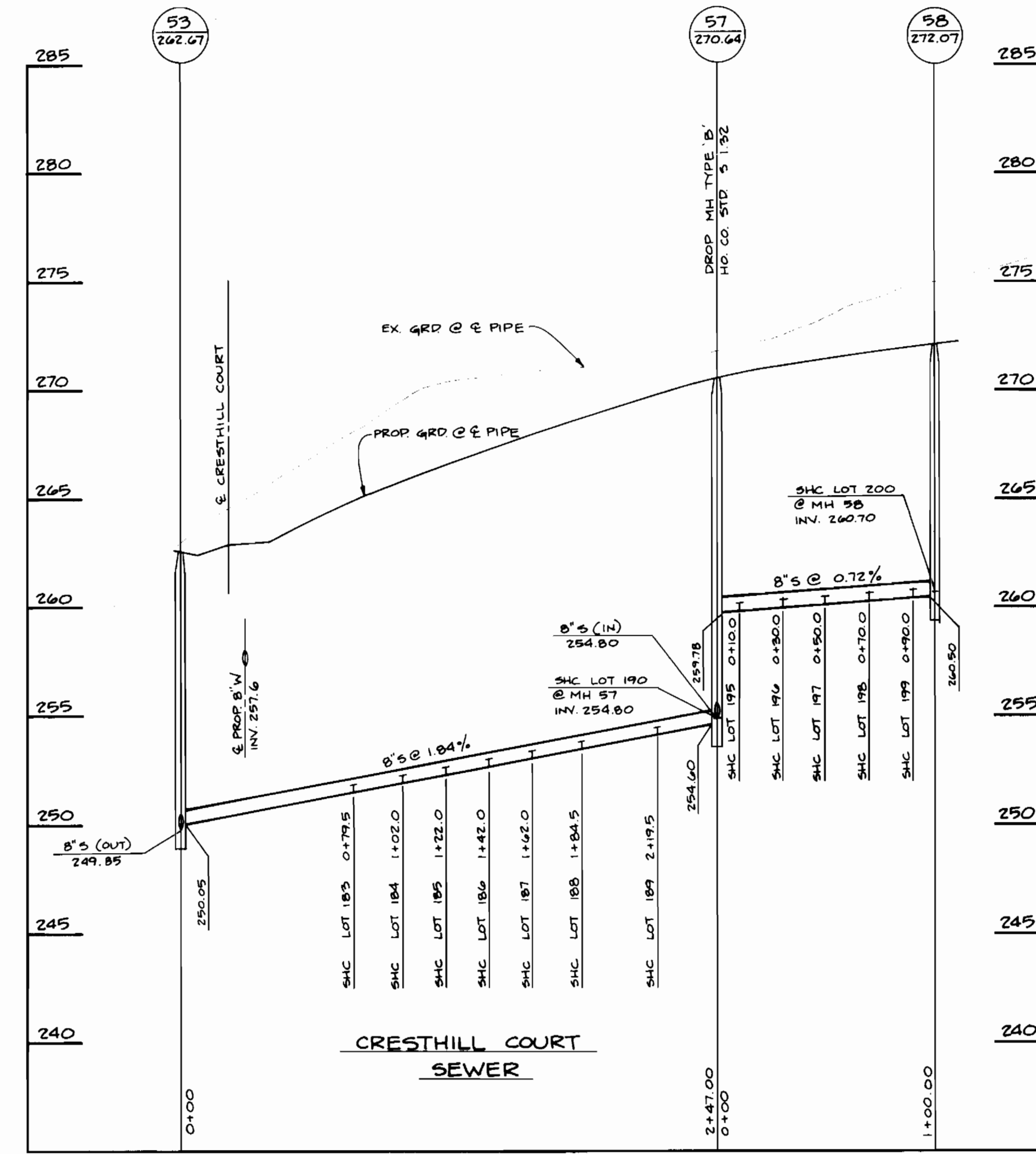
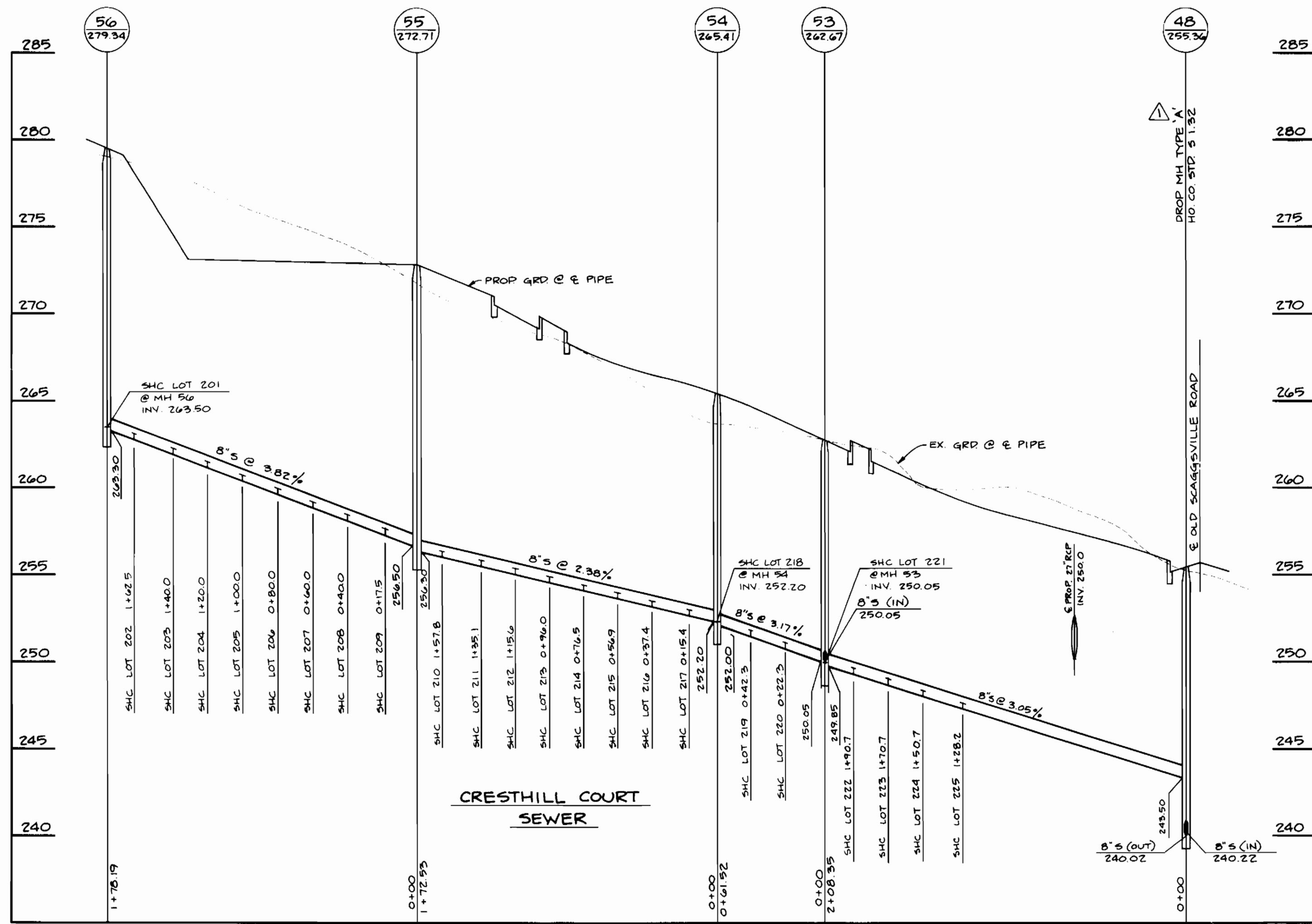
WYNDEMERE
SECTION 2 PHASE II
LOTS 140-225 & 244-250
ELECTION DISTRICT NO. 6

CONTRACT NO. 24-3329-D

SCALE
1" = 50' HORIZ.
1" = 5' VERT.
SHEET
4 OF 6

ws/s WYNDEMERE

3329



DEPARTMENT OF PUBLIC WORKS
HOWARD COUNTY, MARYLAND

TSA GROUP, INC.

planning • engineering • surveying
8480 Baltimore National Pike • Suite 418
Ellicott City, Maryland 21043

John M. ...

DES: JME, DRK	DBT	REVISIONS PER DEPT. OF NATURAL RESOURCES DRAIN CONSTRUCTION PERMIT REQUIREMENTS	9-9-94
DRN: DBT		SEPARATE PROJECT INTO TWO CONTRACTS - PHASE I AND PHASE II	2-8-95
CHK: JME			
DATE: 3/7/94	BY NO.	REVISIONS	DATE
5/20/94			

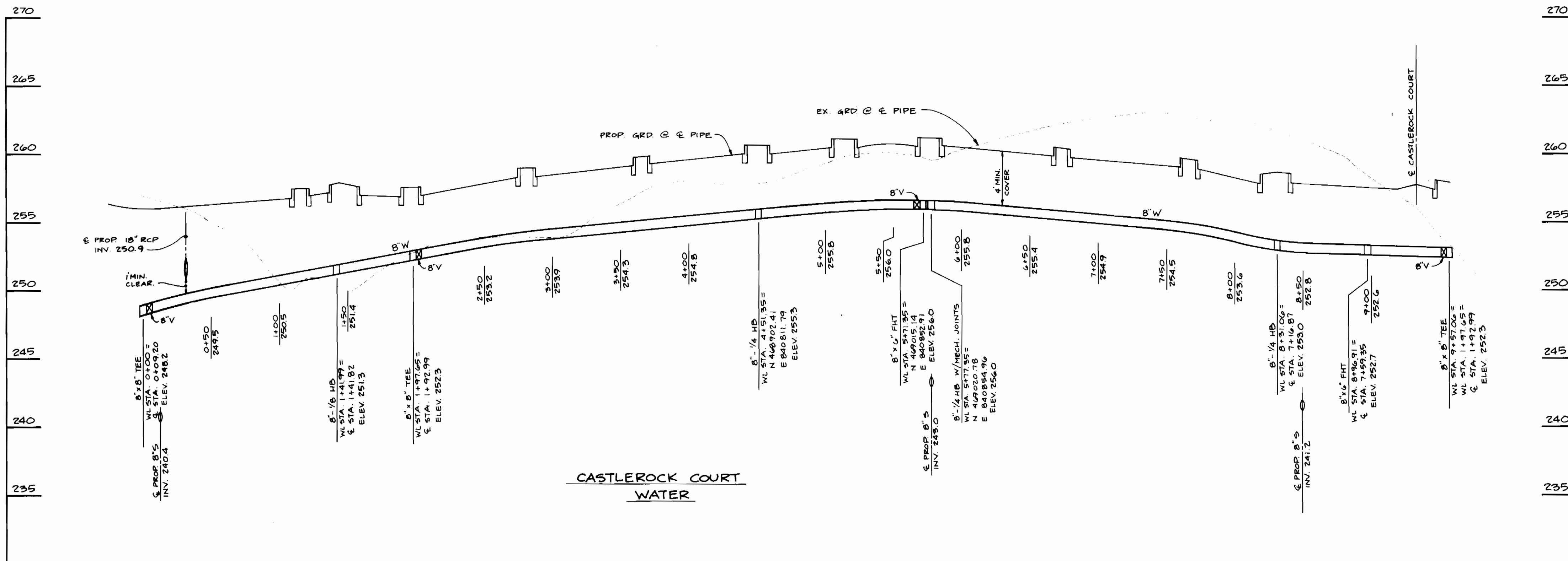
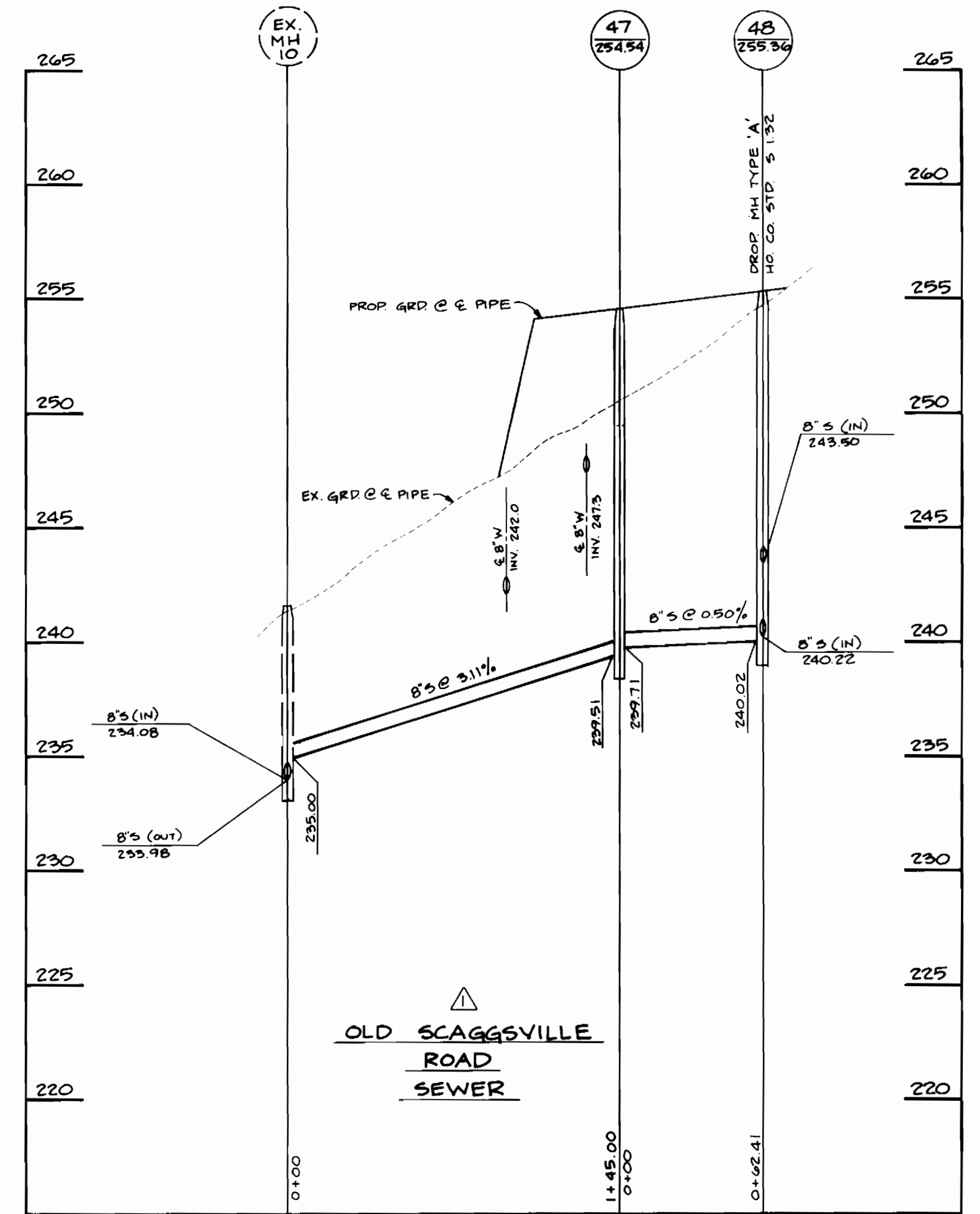
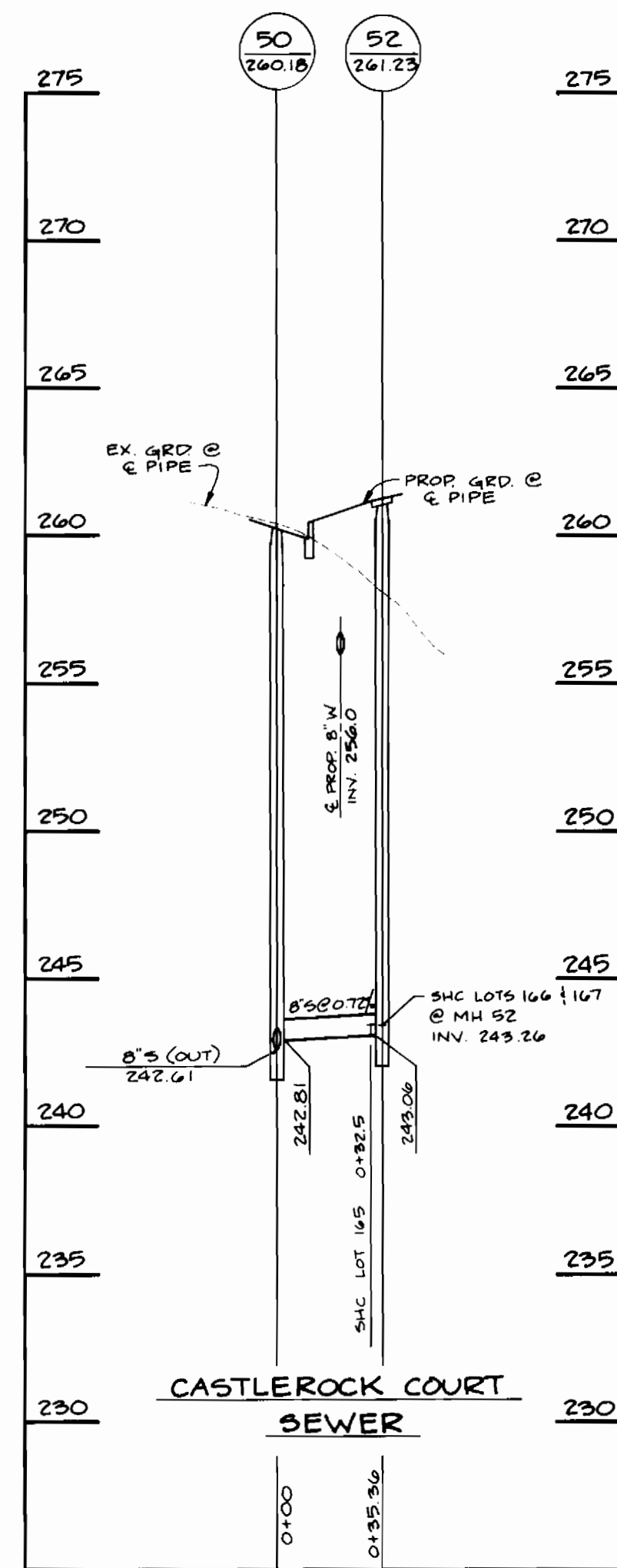
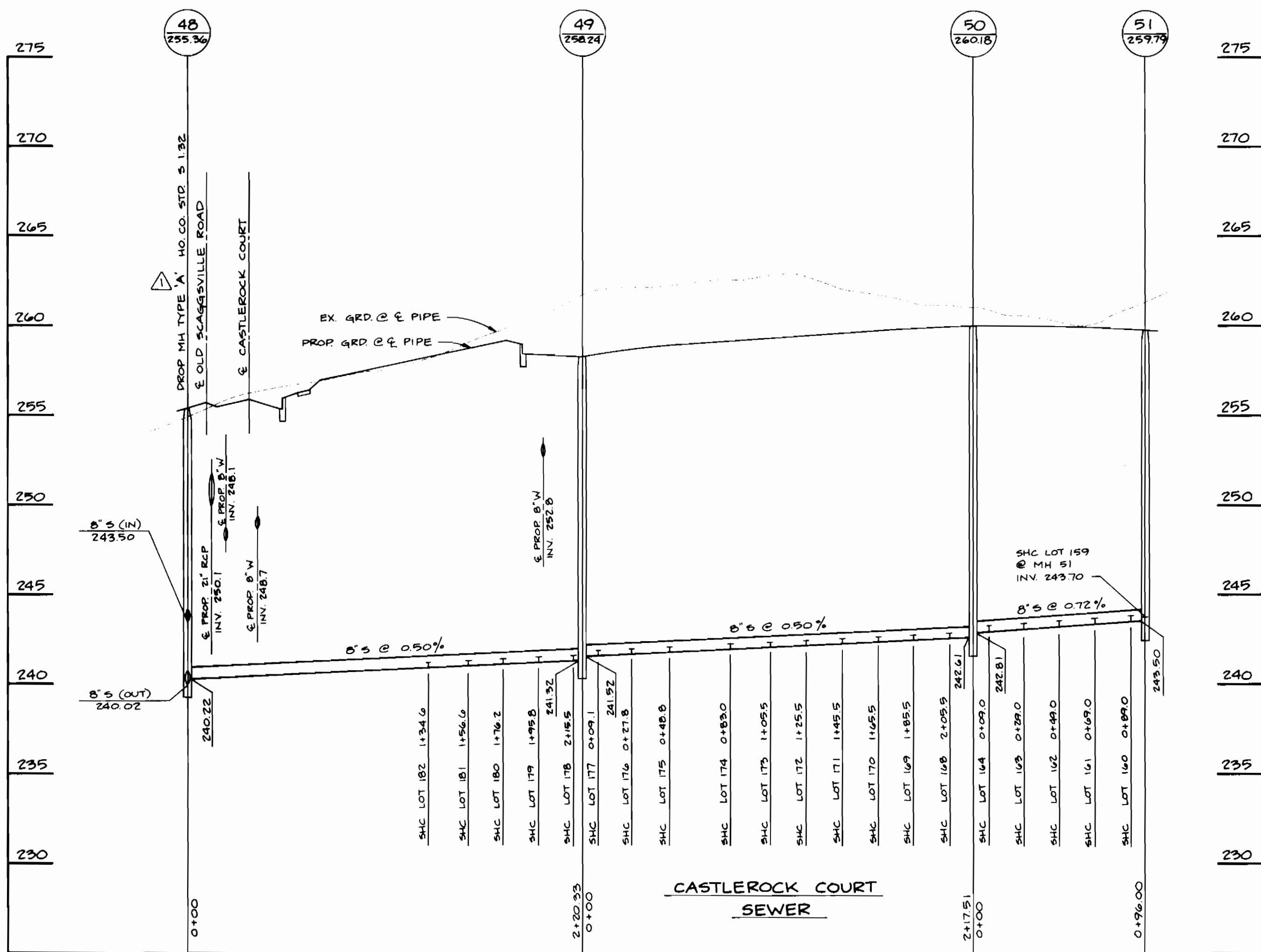
PROFILES OF
WATER & SEWER MAINS

600 SCALE MAP NO. 47 BLOCKS 19 & 20

WYNDEMERE
SECTION 2 PHASE II
LOTS 140-225 AND 244-250
ELECTION DISTRICT NO. 6
CONTRACT NO. 24-3329-D

SCALE
1" = 50' HORIZ.
1" = 5' VERT.
SHEET
5 OF 6

3329 ws/6 WYNDEMERE



DEPARTMENT OF PUBLIC WORKS
HOWARD COUNTY, MARYLAND

James P. Shaw 6/22/94
DIRECTOR OF PUBLIC WORKS DATE

Paul D. Spang 6/22/94
CHIEF, BUREAU OF ENGINEERING DATE

Robert W. Ramsey 6-15-94
CHIEF, BUREAU OF UTILITIES DATE

John D. ... 6/22/94
CHIEF, LAND DEVELOPMENT DIVISION DATE

TSA GROUP, INC.
planning • engineering • surveying
8480 Baltimore National Pike • Suite 418
Ellicott City, Maryland 21043

John D. ...

DES: JME, DRK	DBT	REVISIONS PER DEPT. OF NATURAL RESOURCES DAM CONSTRUCTION PERMIT REQUIREMENTS	7-9-94
DRN: DBT		SEPARATE PROJECT INTO TWO CONTRACTS - PHASE I AND PHASE II	2-8-95
CHK: JME			
DATE: 3/7/94	BY NO.	REVISIONS	DATE
5/20/94			600 SCALE MAP NO. 47

PROFILES OF
WATER & SEWER MAINS

600 SCALE MAP NO. 47

WYNDEMERE
SECTION 2 PHASE II
LOTS 140-225 AND 244-250
ELECTION DISTRICT NO. 6

CONTRACT NO. 24-3329-D

SCALE
1" = 50' HORIZ.
1" = 5' VERT.

SHEET
6 OF 6

WATER AS-BUILTS

SEWER AS-BUILTS

LOT #	LOT #	LOT #
140 67' TO H.H. #1 61' TO F.H. #1	179 41' TO H.H. #5 76' TO F.H. #5	218 57' TO H.H. #3 25' TO H.H. #4
141 72' TO H.H. #1 66' TO F.H. #1	180 74' TO F.H. #5 45' TO H.H. #4	219 63' TO H.H. #3 24' TO H.H. #4
142 121' TO H.H. #1 99' TO F.H. #1	181 75' TO H.H. #4 90' TO F.H. #5	220 26' TO H.H. #3 52' TO H.H. #4
143 20' TO F.H. #1 115' TO F.H. #5	182 77' TO H.H. #4 93' TO F.H. #5	221 25' TO H.H. #3 55' TO H.H. #4
144 124' TO F.H. #1 113' TO F.H. #5	183 103' TO F.H. #2 97' TO H.H. #4	222 33' TO H.H. #3 96' TO H.H. #4
145 95' TO F.H. #5 146' TO H.H. #4	184 105' TO F.H. #2 102' TO H.H. #4	223 38' TO H.H. #3 95' TO H.H. #4
146 92' TO F.H. #5 148' TO H.H. #4	185 125' TO F.H. #2 124' TO H.H. #7	224 58' TO H.H. #3 128' TO H.H. #4
147 81' TO F.H. #5 130' TO H.H. #4	186 128' TO F.H. #2 119' TO H.H. #7	225 63' TO H.H. #3 134' TO H.H. #4
148 85' TO F.H. #5 136' TO H.H. #4	187 113' TO H.H. #6 86' TO H.H. #7	
149 71' TO F.H. #5 135' TO H.H. #4	188 100' TO H.H. #6 81' TO H.H. #7	
150 74' TO F.H. #5 137' TO H.H. #4	189 53' TO H.H. #6 43' TO H.H. #7	
151 145' TO H.H. #1 115' TO F.H. #5	190 48' TO H.H. #6 42' TO H.H. #7	
152 140' TO H.H. #1 118' TO F.H. #5	191 27' TO H.H. #6 40' TO H.H. #7	
153 86' TO H.H. #1 155' TO H.H. #0	192 12' TO H.H. #6 57' TO H.H. #7	
154 83' TO H.H. #1 153' TO H.H. #0	193 16' TO H.H. #6 62' TO H.H. #7	
155 55' TO H.H. #1 137' TO H.H. #0	194 25' TO H.H. #6 39' TO H.H. #7	
156 135' TO H.H. #0 51' TO H.H. #1	195 30' TO H.H. #6 39' TO H.H. #7	
157 131' TO H.H. #0 35' TO H.H. #1	196 65' TO H.H. #6 52' TO H.H. #7	
158 130' TO H.H. #0 35' TO H.H. #1	197 70' TO H.H. #6 58' TO H.H. #7	
159 35' TO H.H. #1 107' TO H.H. #0	198 45' TO H.H. #8 50' TO F.H. #3	
160 103' TO H.H. #0 35' TO H.H. #1	199 42' TO H.H. #8 45' TO F.H. #3	
161 49' TO H.H. #1 71' TO F.H. #4	200 42' TO H.H. #8 11' TO F.H. #3	
162 54' TO H.H. #1 65' TO F.H. #4	201 45' TO H.H. #8 7' TO F.H. #3	
163 43' TO H.H. #0 33' TO F.H. #4	202 47' TO F.H. #3 28' TO H.H. #6	
164 39' TO H.H. #0 27' TO F.H. #4	203 43' TO F.H. #3 32' TO H.H. #6	
165 30' TO H.H. #0 10' TO F.H. #4	204 44' TO F.H. #3 67' TO H.H. #6	
166 43' TO H.H. #0 14' TO F.H. #4	205 47' TO F.H. #3 72' TO H.H. #6	
167 27' TO H.H. #2 36' TO H.H. #0	206 70' TO F.H. #3 73' TO H.H. #5	
168 32' TO H.H. #2 37' TO H.H. #0	207 74' TO F.H. #3 69' TO H.H. #5	
169 64' TO H.H. #2 53' TO H.H. #0	208 106' TO F.H. #3 34' TO H.H. #5	
170 70' TO H.H. #2 56' TO H.H. #0	209 110' TO F.H. #3 29' TO H.H. #5	
171 106' TO H.H. #2 88' TO H.H. #0	210 117' TO F.H. #2 27' TO H.H. #5	
172 111' TO H.H. #2 93' TO H.H. #0	211 113' TO F.H. #2 32' TO H.H. #5	
173 103' TO H.H. #2 133' TO F.H. #5	212 66' TO F.H. #2 68' TO H.H. #5	
174 100' TO H.H. #2 130' TO F.H. #5	213 65' TO F.H. #2 73' TO H.H. #5	
175 62' TO H.H. #2 106' TO F.H. #5	214 67' TO F.H. #2 74' TO H.H. #5	
176 58' TO H.H. #2 103' TO F.H. #5	215 64' TO F.H. #2 71' TO H.H. #5	
177 30' TO H.H. #2 63' TO F.H. #5	216 67' TO F.H. #2 46' TO H.H. #4	
178 30' TO H.H. #2 82' TO F.H. #5	217 68' TO F.H. #2 43' TO H.H. #4	

LOT #	DISTANCE BETWEEN S.H.C.'S	LOT #	LOT #
140 81' TO H.H. #10 170' TO H.H. #9	22'	179 75' TO F.H. #5 34' TO H.H. #4	218 68' TO H.H. #3 21' TO H.H. #4
141 94' TO H.H. #10 148' TO H.H. #9	20'	180 77' TO F.H. #5 46' TO H.H. #4	219 47' TO H.H. #3 28' TO H.H. #4
142 113' TO H.H. #10 130' TO H.H. #9	20'	181 85' TO F.H. #5 65' TO H.H. #4	220 30' TO H.H. #3 46' TO H.H. #4
143 128' TO H.H. #10 107' TO H.H. #9	19'	182 97' TO F.H. #5 88' TO H.H. #4	221 21' TO H.H. #3 63' TO H.H. #4
144 147' TO H.H. #10 90' TO H.H. #9	21'	183 88' TO H.H. #3 98' TO F.H. #2	222 25' TO H.H. #3 82' TO H.H. #4
145 165' TO H.H. #10 70' TO H.H. #9	23'	184 109' TO H.H. #3 108' TO F.H. #2	223 44' TO H.H. #3 101' TO H.H. #4
146 187' TO H.H. #10 46' TO H.H. #9	22'	185 128' TO H.H. #3 120' TO F.H. #2	224 62' TO H.H. #3 123' TO H.H. #4
147 244' TO H.H. #10 17' TO H.H. #9	22'	186 132' TO F.H. #2 111' TO H.H. #7	225 85' TO H.H. #3 145' TO H.H. #4
148 265' TO H.H. #10 48' TO H.H. #9	20'	187 120' TO H.H. #6 94' TO H.H. #7	
149 285' TO H.H. #10 58' TO H.H. #9	19'	188 98' TO H.H. #6 75' TO H.H. #7	
150 304' TO H.H. #10 77' TO H.H. #9	19'	189 64' TO H.H. #6 47' TO H.H. #7	
151 303' TO H.H. #10 96' TO H.H. #9	21'	190 85' TO H.H. #6 38' TO H.H. #7	
152 282' TO H.H. #10 119' TO H.H. #9	34'	191 18' TO H.H. #6 44' TO H.H. #7	
153 247' TO H.H. #10 155' TO H.H. #9	20'	192 11' TO H.H. #6 46' TO H.H. #7	
154 223' TO H.H. #10 176' TO H.H. #9	20'	193 25' TO H.H. #6 64' TO H.H. #7	
155 204' TO H.H. #10 198' TO H.H. #9	19'	194 5' TO H.H. #6 44' TO H.H. #7	
156 186' TO H.H. #10 216' TO H.H. #9	21'	195 37' TO H.H. #6 38' TO H.H. #7	
157 165' TO H.H. #10 238' TO H.H. #9	23'	196 58' TO H.H. #6 48' TO H.H. #7	
158 143' TO H.H. #10 240' TO H.H. #9		197 64' TO H.H. #6 63' TO H.H. #7	
159 116' TO H.H. #10 47' TO H.H. #11		198 57' TO F.H. #3 49' TO H.H. #8	
160 43' TO H.H. #11 97' TO H.H. #10		199 37' TO F.H. #3 42' TO H.H. #8	
161 63' TO H.H. #11 77' TO H.H. #10		200 16' TO F.H. #3 41' TO H.H. #8	
162 70' TO H.H. #11 61' TO H.H. #10		201 50' TO F.H. #3 14' TO H.H. #8	
163 45' TO H.H. #11 38' TO F.H. #4		202 52' TO F.H. #3 18' TO H.H. #8	
164 36' TO H.H. #11 18' TO F.H. #4		203 40' TO F.H. #3 40' TO H.H. #8	
165 18' TO H.H. #11 4' TO F.H. #4		204 43' TO F.H. #3 61' TO H.H. #8	
166 14' TO H.H. #11 24' TO F.H. #4		205 52' TO F.H. #3 65' TO H.H. #8	
167 39' TO H.H. #11 15' TO H.H. #12		206 46' TO F.H. #3 83' TO H.H. #8	
168 37' TO H.H. #11 38' TO H.H. #12		207 62' TO H.H. #5 75' TO H.H. #8	
169 48' TO H.H. #11 69' TO H.H. #12		208 42' TO H.H. #5 88' TO H.H. #8	
170 62' TO H.H. #11 78' TO H.H. #12		209 21' TO H.H. #5 103' TO H.H. #8	
171 81' TO H.H. #11 96' TO H.H. #12		210 125' TO F.H. #2 16' TO H.H. #5	
172 99' TO H.H. #11 119' TO H.H. #12		211 106' TO F.H. #2 40' TO H.H. #5	
173 137' TO F.H. #5 110' TO H.H. #12		212 93' TO F.H. #2 69' TO H.H. #5	
174 121' TO F.H. #5 92' TO H.H. #12		213 78' TO F.H. #2 98' TO H.H. #5	
175 113' TO F.H. #5 71' TO H.H. #12		214 68' TO F.H. #2 82' TO H.H. #5	
176 98' TO F.H. #5 51' TO H.H. #12		215 63' TO F.H. #2 63' TO H.H. #5	
177 81' TO F.H. #5 35' TO H.H. #12		216 63' TO F.H. #2 50' TO H.H. #5	
178 77' TO F.H. #5 36' TO H.H. #12		217 73' TO F.H. #2 43' TO H.H. #5	

3329 AS-BLT INFO.

DEPARTMENT OF PUBLIC WORKS
HOWARD COUNTY, MARYLAND

DIRECTOR OF PUBLIC WORKS DATE CHIEF, BUREAU OF ENGINEERING DATE

DES:			
DRN:			
CHK:			
DATE:	BY	NO.	REVISION

SEWER & WATER
AS-BUILTS

WYNDEMERE
SECTION 2 PHASE II
LOTS 140-225 AND 244-250

SCALE
AS
SHOWN

SHEET
6A OF 6

CONTRACT NO. 24-3329-D

600' SCALE MAP NO. BLOCK NO.