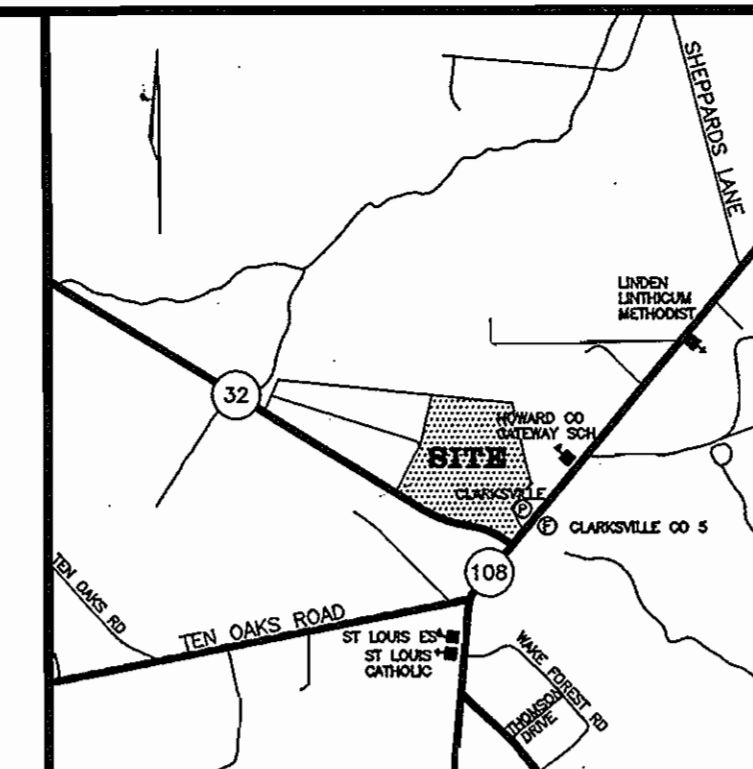


# HOLWECK SUBDIVISION

5TH ELECTION DISTRICT

## HOWARD COUNTY, MARYLAND DEPARTMENT OF PUBLIC WORKS

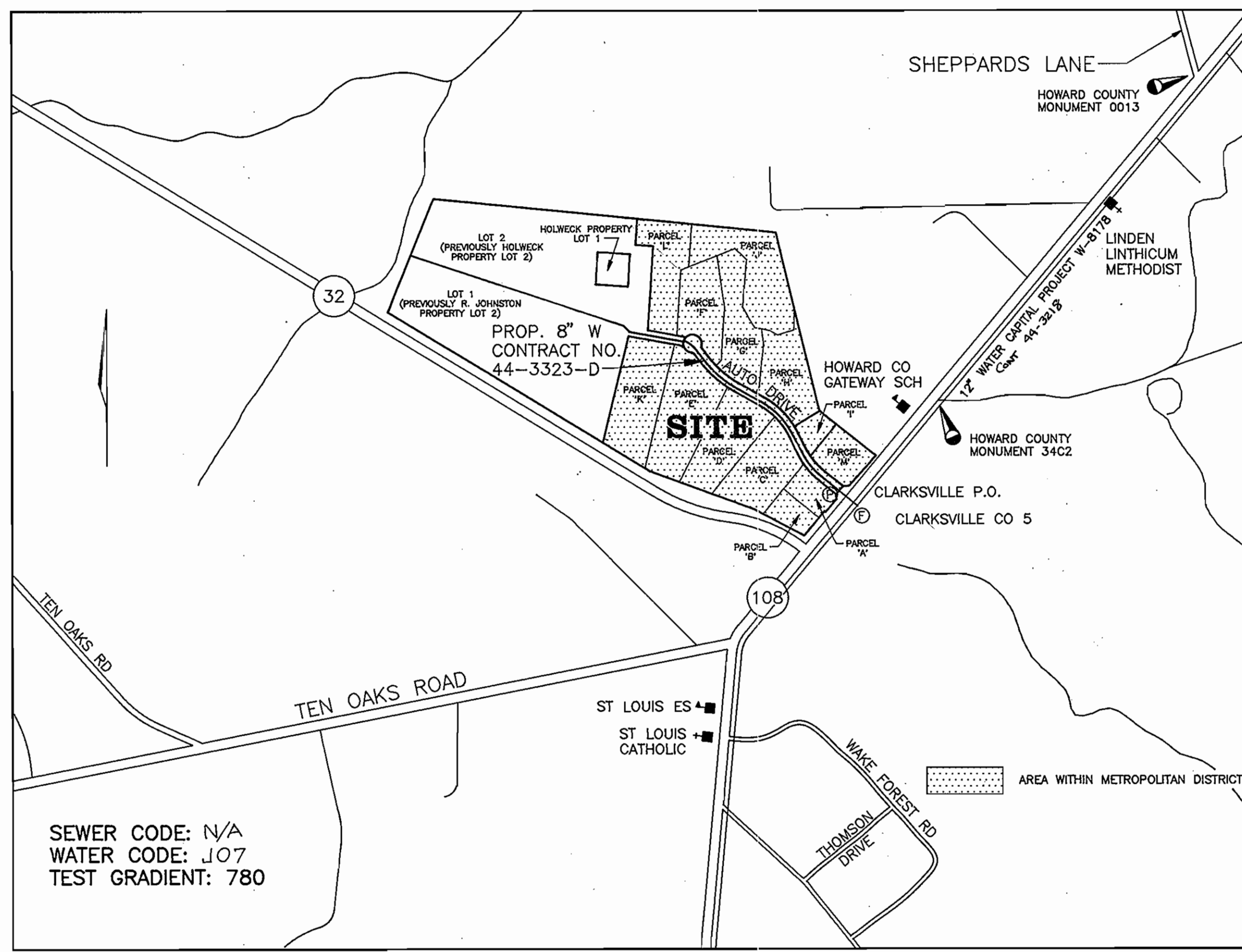


VICINITY MAP  
SCALE: 1"=800'

ITEMS	QUANTITIES ESTIMATED	QUANTITIES	TYPE	MANUFACTURER/SUPPLIER
6" DIP FOR FH	LF	111.5 LF	DIP	GRIFFIN PIPE PROD./ARMSTED INDUSTRIES
4" ELBOW	EACH	2	DI	TYLER PIPE AND WATER PRO SUPPLIES CORPORATION
4" CAP & BUTTRESS	1	1	DI	TYLER PIPE AND WATER PRO SUPPLIES CORPORATION
4" WATER	243 LF.	240.0	DIP	GRIFFIN PIPE PROD./ARMSTED INDUSTRIES
8"x4" TEE	1	1	DI	TYLER PIPE AND WATER PRO SUPPLIES CORPORATION
8" CAP & BUTTRESS	1	1	DI	TYLER PIPE AND WATER PRO SUPPLIES CORPORATION
4" VALVE	1	1	MECH JOINT	MUELLER COMPANY/WATER PRO SUPPLIES CORPORATION
6" VALVE	H 12 Δ	11	MECH JOINT	MUELLER COMPANY/WATER PRO SUPPLIES CORPORATION
8" VALVE	2	2	MECH JOINT	MUELLER COMPANY/WATER PRO SUPPLIES CORPORATION
8"x6" TEE	11	11	DI	TYLER PIPE AND WATER PRO SUPPLIES CORPORATION
FIRE HYDRANT	K 5 Δ	4	BRASS FITTINGS	MUELLER COMPANY/WATER PRO SUPPLIES CORPORATION
2" W.H.C.	51 LF.	55	"K" SOFT	HALSTED COMPANY/WATER PRO SUPPLIES CORPORATION
1-1/2" W.H.C.	74 LF.	78	"K" SOFT	HALSTED COMPANY/WATER PRO SUPPLIES CORPORATION
6" W.H.C.	245 LF.	241	DIP	GRIFFIN PIPE PROD./WATER PRO SUPPLIES CORPORATION
8" WATER	1401 LF.	1427	DIP	GRIFFIN PIPE PROD./WATER PRO SUPPLIES CORPORATION

AS-BUILT

NAME OF UTILITY CONTRACTOR: W.F. WILSONS AND SONS  
SURVEY AND DRAFTING DIVISION AS-BUILT DATE: 11/10/94



VICINITY MAP  
SCALE: 1"=800'

### GENERAL NOTES

- PART I**
- APPROXIMATE LOCATION OF EXISTING MAINS ARE SHOWN. THE CONTRACTOR SHALL TAKE ALL NECESSARY PRECAUTIONS TO PROTECT EXISTING MAINS AND SERVICES AND MAINTAIN UNINTERRUPTED SUPPLY. ANY DAMAGE INCURRED SHALL BE REPAIRED IMMEDIATELY TO THE SATISFACTION OF THE ENGINEER AT THE CONTRACTOR'S EXPENSE.
  - ALL HORIZONTAL CONTROLS ARE BASED ON MARYLAND STATE COORDINATES.
  - ALL VERTICAL CONTROLS ARE BASED ON U.S.G.S DATA.
  - ALL PIPE ELEVATIONS SHOWN ARE INVERT ELEVATIONS.
  - CLEAR ALL UTILITIES BY A MINIMUM OF 6". CLEAR ALL POLES BY 2'-0" MINIMUM OR TUNNEL AS REQUIRED. THE OWNER HAS CONTRACTED THE UTILITY COMPANIES AND HAS MADE ARRANGEMENTS FOR BRACING OF POLES AS SHOWN ON DRAWINGS. IN THE EVENT THE CONTRACTOR'S WORK REQUIRES THE BRACING OF ADDITIONAL POLES, ANY COST INCURRED BY THE OWNER FOR BRACING OF ADDITIONAL POLES OR DAMAGES SHALL BE DEDUCTED FROM MONEY OWED THE CONTRACTOR. THE CONTRACTOR SHALL COORDINATE WITH THE UTILITY COMPANIES TO SCHEDULE THE BRACING OF THE POLES.
  - FOR DETAILS NOT SHOWN ON THE DRAWINGS, AND FOR MATERIALS AND CONSTRUCTION METHODS USE HOWARD COUNTY DESIGN MANUAL, VOLUME IV, STANDARD SPECIFICATIONS AND DETAILS FOR CONSTRUCTION (LATEST EDITION). THE CONTRACTOR SHALL HAVE A COPY OF VOLUME IV ON THE JOB.
  - WHERE TEST PITS HAVE BEEN MADE ON EXISTING UTILITIES, THEY ARE NOTED BY THE SYMBOL AT THE LOCATION OF THE TEST PIT. A NOTE OR NOTES CONTAINING THE RESULTS OF THE TEST PIT OR PITS IS INCLUDED ON THE DRAWINGS. EXISTING UTILITIES IN THE VICINITY OF THE PROPOSED WORK FOR WHICH TEST PITS HAVE NOT BEEN DUG SHALL BE LOCATED BY THE CONTRACTOR TWO WEEKS IN ADVANCE OF CONSTRUCTION.
  - THE CONTRACTOR SHALL NOTIFY THE FOLLOWING UTILITY COMPANIES OR AGENCIES AT LEAST FIVE WORKING DAYS BEFORE STARTING WORK SHOWN THESE PLANS:
 

STATE HIGHWAY ADMINISTRATION	531-5533
B.G.&E. CO. CONTRACTOR SERVICES	850-4620
B.G.&E. CO. UNDER GROUND DAMAGE CONTROL	787-4620
MISS UTILITY	1-800-257-7777
COLONIAL PIPELINE CO.	795-1390
HOWARD COUNTY DEPARTMENT OF PUBLIC WORKS	313-4900
BUREAU OF UTILITIES	
  - TREES AND SHRUBS ARE TO BE PROTECTED FROM DAMAGE TO THE MAXIMUM EXTENT. TREES AND SHRUBS LOCATED WITHIN THE CONSTRUCTION STRIP ARE NOT TO BE REMOVED OR DAMAGED BY THE CONTRACTOR.
  - THE CONTRACTOR SHALL REMOVE TREES, STUMPS AND ROOTS ALONG LINE OF EXCAVATION. PAYMENT FOR SUCH REMOVAL SHALL BE INCLUDED IN THE UNIT PRICE BID FOR THE CONSTRUCTION OF THE MAIN.
  - THE CONTRACTOR SHALL NOTIFY THE BUREAU OF HIGHWAYS, HOWARD COUNTY, AT (410) 313-2450 AT LEAST FIVE WORKING DAYS BEFORE ANY OPEN CUT OF ANY COUNTY ROAD OR BORING/JACKING OPERATION IN COUNTY ROADS FOR LAYING WATER/SEWER MAIN OR HOUSE CONNECTIONS. THE APPROVAL OF THESE DRAWINGS WILL CONSTITUTE COMPLIANCE WITH DPW REQUIREMENTS PER SECTION 18.114(a) OF THE HOWARD COUNTY CODE.

### PART II - WATER

- ALL WATER MAINS TO BE D.I.P. CLASS 52 UNLESS OTHERWISE NOTED.
- TOPS OF ALL WATER MAINS TO HAVE A MINIMUM OF 3-1/2' COVER UNLESS OTHERWISE NOTED.
- VALVES ADJACENT TO TEES SHALL BE STRAPPED TO TEES.
- ALL FITTINGS SHALL BE BUTTRESSED OR ANCHORED WITH CONCRETE IN ACCORDANCE WITH CONCRETE WITH THE STANDARD DETAILS UNLESS OTHERWISE PROVIDED FOR ON THE DRAWINGS.
- FIRE HYDRANTS SHALL BE SET TO THE BURY LINE ELEVATIONS SHOWN ON THE DRAWINGS. ALL FIRE HYDRANTS SHALL BE RESTRAINED AND BUTTRESSED WITH CONCRETE IN ACCORDANCE WITH STANDARD DETAILS. SOIL AROUND FIRE HYDRANT SHALL BE COMPACTED IN ACCORDANCE WITH SECTION 1000 AND 1005 OF THE STANDARD SPECIFICATIONS.
- THE CONTRACTOR SHALL NOT OPERATE ANY WATER MAIN VALVES ON THE EXISTING WATER SYSTEM.
- ALL WATER HOUSE CONNECTIONS SHALL BE FOR INSIDE METER SETTING UNLESS OTHERWISE NOTED ON PLANS OR IN SPECIFICATIONS.
- COORDINATES BASED ON NAD '83, MARYLAND COORDINATE SYSTEM AS PROJECTED BY HOWARD COUNTY GEODETIC CONTROL STATIONS NO. 34C2 AND NO. 0013.
 

34C2	N 562,321.798	E 1,329,750.722
0013	N 564,285.948	E 1,331,309.715
- Private water line easements shall end upon connection and availability of public water mains.

TYPE OF BUILDING:	COMMERCIAL
NO. OF LOTS/PARCELS:	13
NO. OF WATER HOUSE CONNECTIONS:	11
NO. OF SEWER HOUSE CONNECTIONS:	N/A
DRAINAGE AREA:	N/A
TREATMENT PLANT:	N/A

SEDIMENT CONTROL MEASURES WILL BE IMPLEMENTED IN ACCORDANCE WITH SECTION 219 OF THE SPECIFICATIONS AND WITH ROAD CONSTRUCTION PLAN F 94-38

REVIEWED FOR HOWARD COUNTY SOIL CONSERVATION DISTRICT AND MEETS TECHNICAL REQUIREMENTS.

*Patricia Engler* 2/24/94  
U.S. SOIL CONSERVATION DISTRICT DATE

THIS DEVELOPMENT IS APPROVED FOR SOIL EROSION AND SEDIMENT CONTROL BY THE HOWARD COUNTY SOIL CONSERVATION DISTRICT.

*John R. Roberts* 2/24/94  
SOIL CONSERVATION DISTRICT DATE

DEPARTMENT OF PUBLIC WORKS

HOWARD COUNTY, MARYLAND

*James J. Brown* 2/2/94 *Robert E. Brown* 3/1/94  
DIRECTOR OF PUBLIC WORKS DATE CHIEF, BUREAU OF ENGINEERING DATE

*Robert M. Bainger* 2-23-94 *John J. Dennis* 3/1/94  
CHIEF, BUREAU OF UTILITIES DATE CHIEF, LAND DEVELOPMENT DIVISION DATE

**MV** Marks & Vogel Associates, Inc.  
Engineers-Surveyors-Planners



DES: D.G.H.	
DRN: D.G.H.	
CHK: R.H.V.	
DATE: 1/94	
DGH	ADD F.H. & STA 370 PER FIRE DEPARTMENT
BY NO.	11/94
REVISION	DATE

TITLE SHEET

600' SCALE MAP NO. 34 BLOCK NO. 6

**HOLWECK SUBDIVISION**

PARCELS A THRU M

5th ELECTION DISTRICT

CONTRACT No.

44-3323-D

SCALE AS SHOWN

SHEET

1 OF 3

AS-BUILT 11/10/94

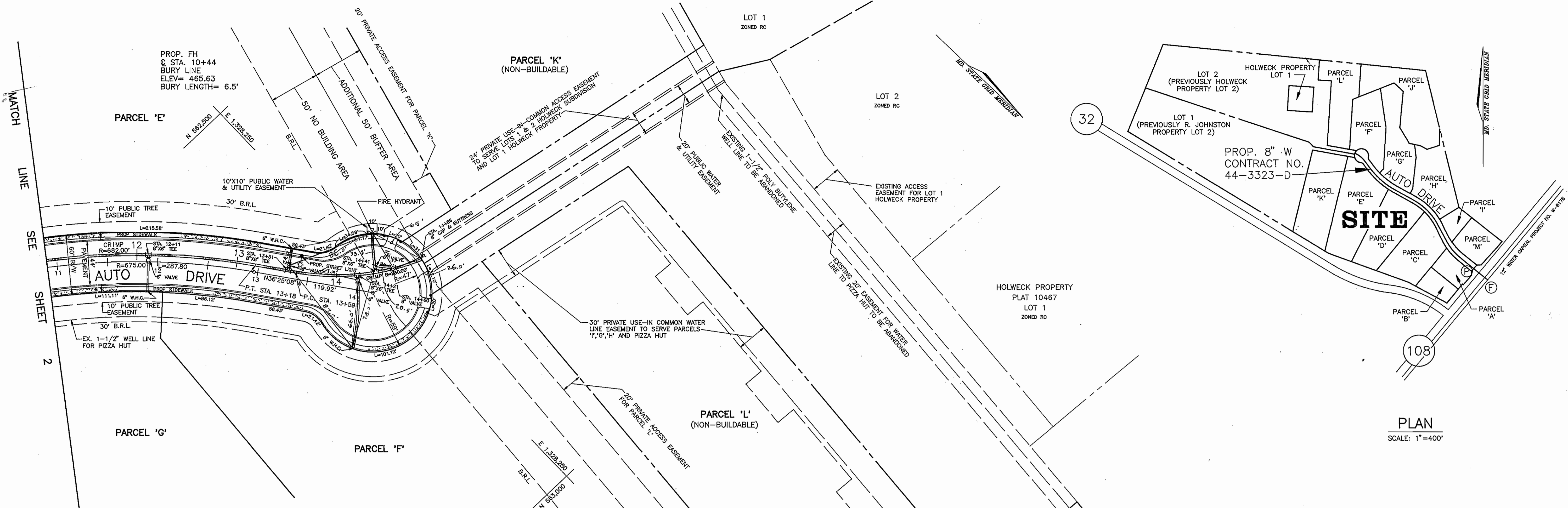
AS-BUILT 1-25-95

3323 WS/1 Holweck Subd.

AS-BUILT 11/10/94



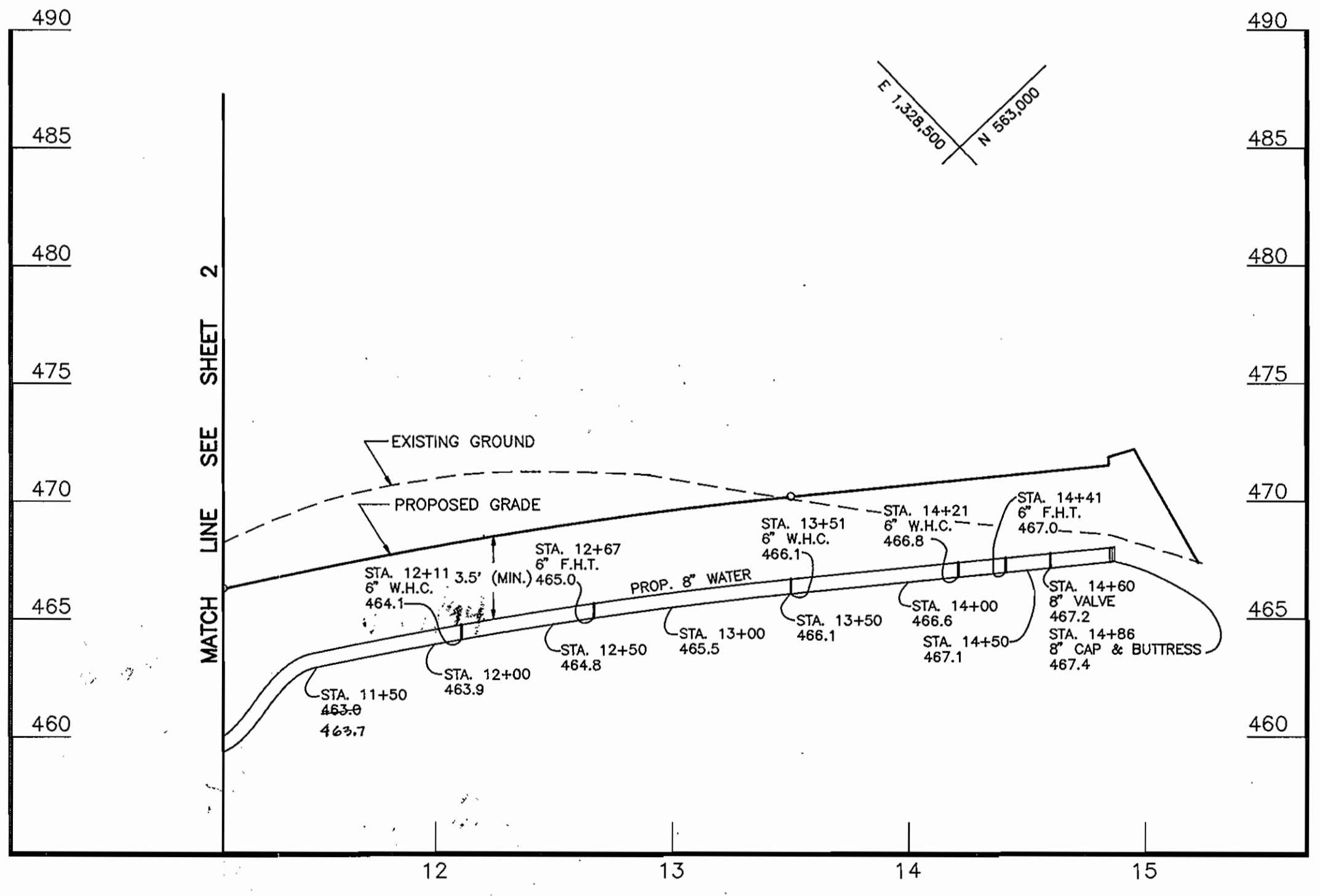
AS-BUILT 11/10/94



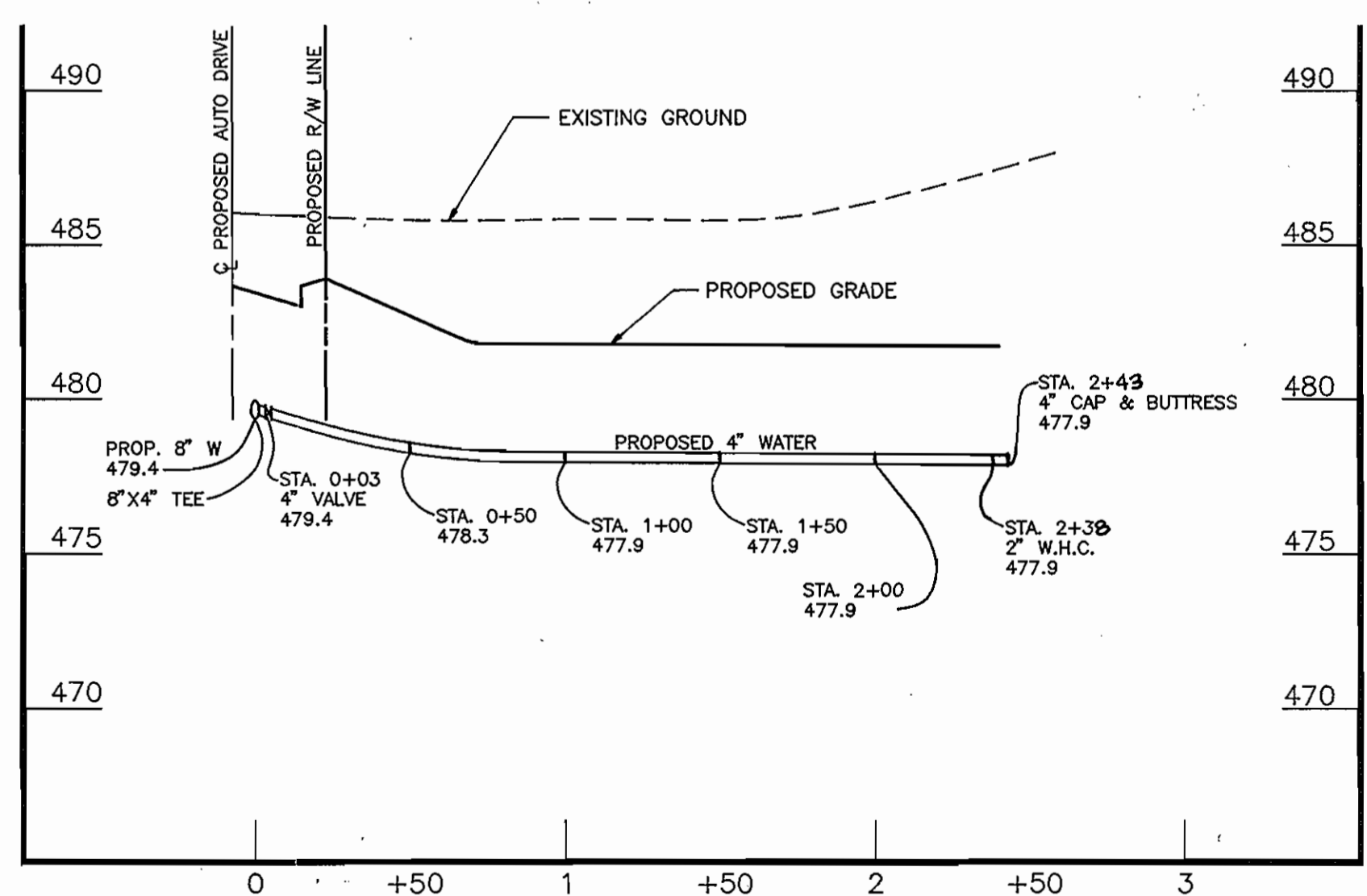
PLAN  
SCALE: 1"=400'

PLAN  
SCALE: 1"=50'

BENCH MARK #2  
5/8" REBAR  
ELEVATION= 448.18



AUTO DRIVE  
SCALE: HORZ. 1"=50', VERT. 1"=5'



4" WATER MAIN  
SCALE: HORZ. 1"=50', VERT. 1"=5'

ws/3 Holweck Subd. 3323

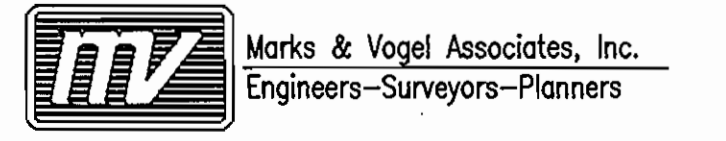
DEPARTMENT OF PUBLIC WORKS  
HOWARD COUNTY, MARYLAND

*James P. Crum* 3/2/94  
DIRECTOR OF PUBLIC WORKS DATE

*Robert M. Beinger* 2-23-94  
CHIEF, BUREAU OF UTILITIES DATE

*Robert J. Segan* 3/1/94  
CHIEF, BUREAU OF ENGINEERING DATE

*Chris Lawrence* 3/1/94  
CHIEF, LAND DEVELOPMENT DIVISION DATE



3691 PARK AVENUE, SUITE 101 TELEPHONE: (410) 461-5829  
ELLICOTT CITY, MD. 21043 FAX: (410) 465-3966



DES: D.G.H.					
DRN: D.G.H.					
CHK: R.H.V.					
DATE: 1/94	BY NO.	REVISION	DATE	600' SCALE MAP NO. 34	BLOCK NO. 6

WATER  
PLAN & PROFILE

**HOLWECK SUBDIVISION**  
PARCELS A THRU M  
5th ELECTION DISTRICT  
CONTRACT No.  
44-3323-D

SCALE AS SHOWN  
SHEET 3 OF 3

AS-BUILT 11/10/94  
AS-BUILT 1-25-95