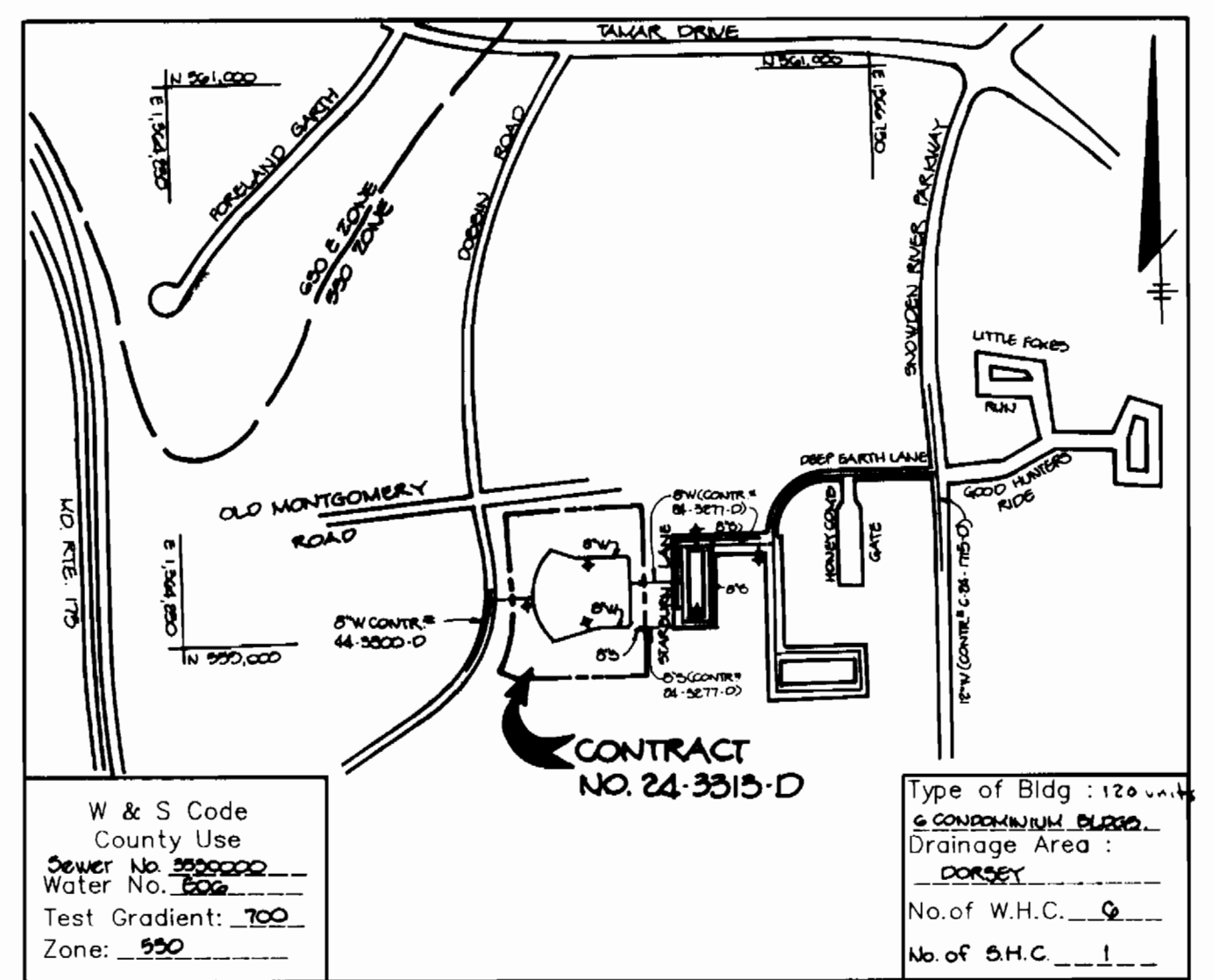


3313 w/s 1 vlr 9/3 Bristol Green

QUANTITIES				
ITEMS	QUANTITIES ESTIMATED	AS-BUILT		
		QUANTITIES	TYPE	MANUFACTURER / SUPPLIER
8" WATER MAIN	1251 LF	1191 LF	DIP	ATLANTIC STATES WATER PIP
6" WATER MAIN	56 LF	56 LF	DIP	ATLANTIC STATES WATER PIP
4" WATER MAIN	60 LF	60 LF	DIP	ATLANTIC STATES WATER PIP
8" VALVES	4 EA	4 EA	SEAT GATE	MUELLEN/WATER PIP
6" VALVES	3 EA	3 EA	SEAT GATE	MUELLEN/WATER PIP
4" VALVES	6 EA	6 EA	SEAT GATE	MUELLEN/WATER PIP
FIRE HYDRANTS	3 EA	3 EA		MUELLEN/WATER PIP
0' COVER	10 LF	1' LF	F.V.C.	AMERICAN MANHOLE CONTRACTOR
NAME OF UTILITY CONTRACTOR: UTILITY SERVICES INC.				
CHECKBOX				
AS-BUILT DATE				
SURVEY AND DRAFTING DIVISION				



VICINITY MAP
SCALE: 1"=600'

GENERAL NOTES

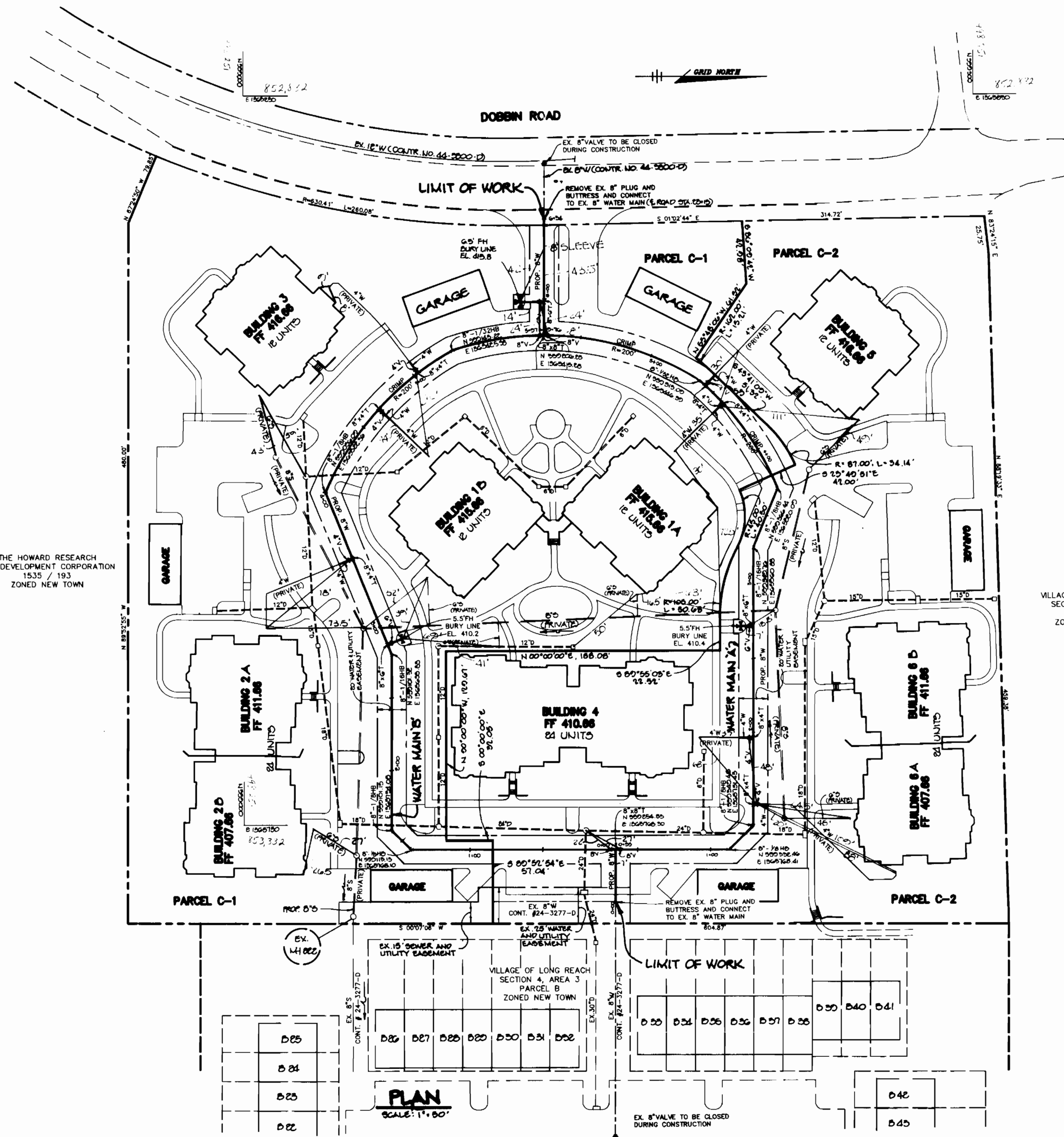
- Approximate location of existing mains are shown. The contractor shall take all necessary precautions to protect existing mains and services and maintain uninterrupted supply. Any damage incurred shall be repaired immediately to the satisfaction of the Engineer at the Contractor's expense.
- All horizontal controls are based on Maryland State Coordinates.
- All vertical controls are based on U.S.G.S. data.
- All pipe elevations shown are invert elevations.
- Clear all utilities by a minimum of 6". Clear all poles by 2'-0" minimum or tunnel as required. The owner has contacted the utility companies and has made arrangements for bracing of poles as shown on the drawings. In the event the contractor's work requires the bracing of additional poles, any cost incurred by the owner for bracing of additional poles or damages shall be deducted from money owed the contractor. The contractor shall coordinate with the utility companies to schedule the bracing of the poles.
- For details not shown on the drawings, and for materials and construction methods use Howard County Design Manual, Volume IV, Standard Specifications and Detail for Construction. (Latest Edition). The contractor shall have a copy of Volume IV on the job.
- Where test pits have been made on existing utilities, they are noted by the symbol at the location of the test pit. A note or notes containing the results of the test pit or pits is included on the drawings. Existing utilities in the vicinity of the proposed work for which test pits have not been dug shall be located by the contractor two weeks in advance of construction operations at his own expense.
- Contractor shall notify the following utility companies or agencies at least five working days before starting work shown on these plans:

State Highway Administration	531-5533
Baltimore Gas & Electric Co. Contractor Services	850-4620
Baltimore Gas & Electric Co. Underground Damage Control	787-9068
Miss Utility	1-800-257-7777
Colonial Pipeline Co.	795-1390
Bureau of Utilities, Howard County Department of Public Works	313-4900
- Trees and shrubs are to be protected from damage to maximum extent. Trees and shrubs located within the construction strip are not to be removed or damaged by the contractor.
- Contractor shall remove trees, stumps and roots along line of excavation. Payment for such removal shall be included in the unit price bid for construction of the main.
- All water mains to be D.I.P. Class 52 unless otherwise noted.
- Tops of all water mains to have a minimum of 3'-1/2" cover unless otherwise noted.
- Valves adjacent to tees shall be strapped to tees.
- All fittings shall be buttressed or anchored with concrete in accordance with the Standard Details unless otherwise provided for on the drawings.
- Fire hydrants shall be set to the bury line elevations shown on the drawings. All fire hydrants shall be strapped and buttressed with concrete in accordance with Standard Details. Soil around the fire hydrant shall be compacted in accordance with Section 1000 and 1005 of the Standard Specifications.
- The contractor shall not operate any water main valves on the existing water system.
- All water house connections shall be for inside meter setting unless otherwise noted on plans or in specifications.
- All sewer mains shall be DIP, RCP, VCPX, CSPX, RCP AND P.V.C. unless otherwise noted.
- The contractor shall provide a joint in all sewer mains within 2'-0" of exterior manhole noted.
- All manholes shall be 4'-0" inside diameter unless otherwise noted.
- Force mains shall be D.I.P. only.
- Manholes shown with 12" and 16" walls are for brick manholes only.
- Manholes designated W.T. in plan and profile shall have watertight frame and covers, Standard Detail 05-52. Where watertight manhole frame and cover is used, set top of frame 1'-6" above finished grade unless otherwise noted on the drawings.
- House(s) with the symbol "C.N.S." indicates that cellar cannot be served.

BENCHMARK DESCRIPTIONS

BENCHMARK #1
STATION 2542001 (CONCRETE MONUMENT)
ELEV. 426.971 (FOR VERT. CONTROL ONLY)
STATION IS LOCATED ON BG&E TRANSMISSION LINES 1060± S.W. OF DOBBIN ROAD

BENCHMARK #2
STATION 2542002 (CONCRETE MONUMENT)
ELEV. 363.638 (FOR VERT. CONTROL ONLY)
STATION IS LOCATED 1000± WEST OF RTE. 175 ON TRANSMISSION LINE AT BG&E TOWER 19-E



Sediment control measures for this contract will be implemented in accordance with Section 219 of the Specifications and as shown on SDP-24-34

HOWARD SOIL CONSERVATION DISTRICT:

Review for Howard Soil Conservation District and meet technical requirements.

Patricia Engler
U.S. SOIL CONSERVATION SERVICE DATE

This plan is approved for soil erosion and sediment control by the Howard Soil Conservation District.

Cliff W. Selig 12/20/03
HOWARD SOIL CONSERVATION DISTRICT DATE

DEPARTMENT OF PUBLIC WORKS
HOWARD COUNTY, MARYLAND

James J. Shan 12/20/03
DIRECTOR OF PUBLIC WORKS DATE

Paula J. Groom 12/22/03
CHIEF, BUREAU OF ENGINEERING DATE

Robert W. Bering 12-14-93
CHIEF, BUREAU OF UTILITIES DATE

Michael G. ... 12/20/03
CHIEF, LAND DEVELOPMENT DATE

RIEMER MUEGGE & ASSOCIATES, INC.
Planners • Engineers • Surveyors
8810 Centre Park Drive Suite 200 Columbia, Md. 21045
401-997-8900 FAX: 410-997-9282

J. Barck
JAYKANT O. PAREKH # 10146

DES: P.A.M.	
DRN: M.A.O.	
CHK: C.J.R.	
DATE: 12-15-03	
BY: NO.	REVISION
DATE:	

PLAN OF A WATER AND A SEWER MAIN

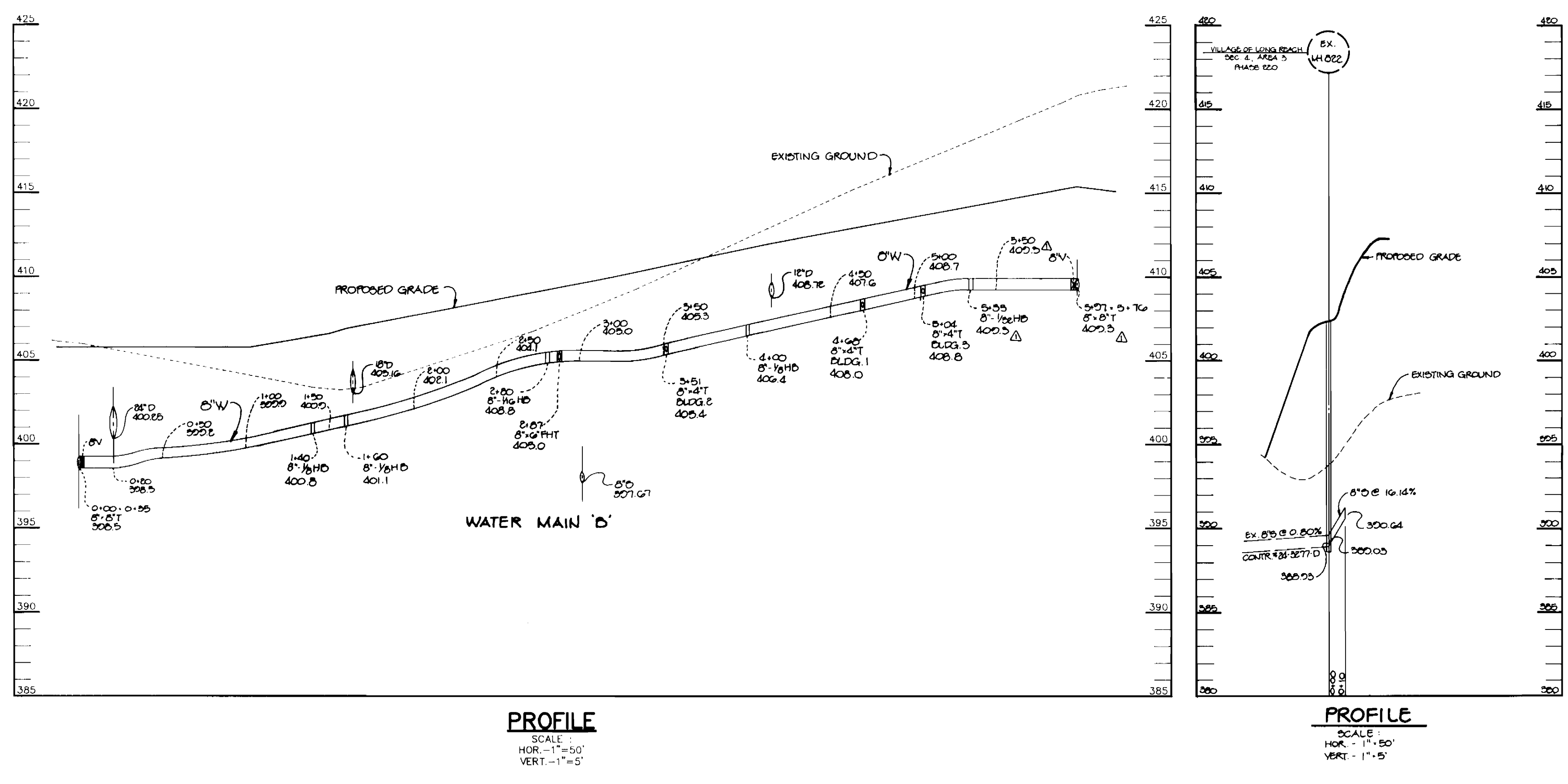
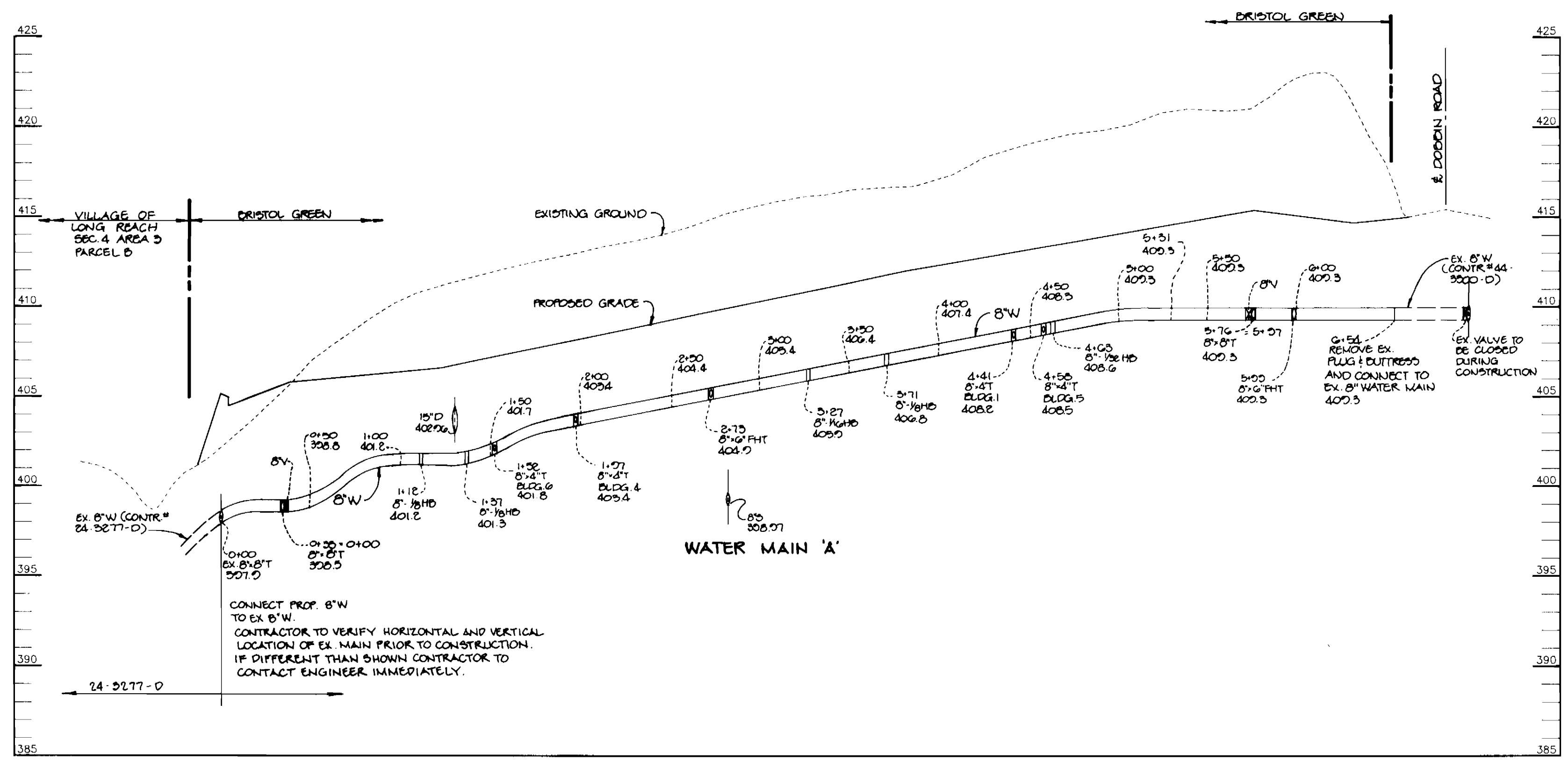
600' SCALE MAP NO. 36 BLOCK NO. 7

BRISTOL GREEN
VILLAGE OF LONG REACH
SECTION 4, AREA 3, PARCELS C-1 & C-2
6th ELECTION DISTRICT
HOWARD COUNTY, MARYLAND
CONTRACT NO. 24-3313-D

SCALE AS SHOWN

SHEET 1 OF 2

3313 W/S 2 VLR 4/3 Bristol Green



DEPARTMENT OF PUBLIC WORKS
 HOWARD COUNTY, MARYLAND

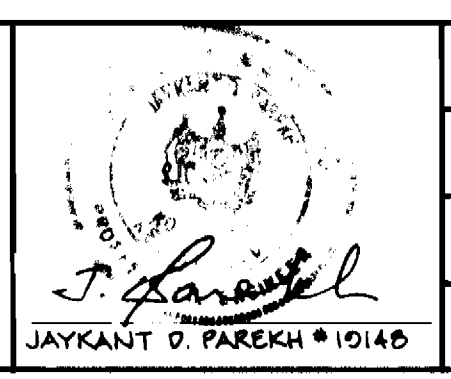
James J. Lew 12/23/93
 DIRECTOR OF PUBLIC WORKS DATE

Richard J. Deason 12/22/93
 CHIEF, BUREAU OF ENGINEERING DATE

Robert H. Deason 12-14-93
 CHIEF, BUREAU OF UTILITIES DATE

William J. Deason 12/22/93
 CHIEF, LAND DEVELOPMENT DATE

RIEMER MUEGGE & ASSOCIATES, INC.
 Planners • Engineers • Surveyors
 8818 Centre Park Drive Suite 200 Columbia, Md. 21045
 401-997-8900 FAX: 410-997-9282



DES: D.A.M.			
DRN: M.A.D.			
CHK: C.J.R.			
DATE: 12-15-93	WAD	REV. INVERTS ON WATER MAIN 'D'	2-14-94
	BY	NO.	REVISION
			DATE

PROFILES OF A WATER AND A SEWER MAIN

600' SCALE MAP NO. 36 BLOCK NO. 7

BRISTOL GREEN
 VILLAGE OF LONG REACH
 SECTION 4, AREA 3, PARCELS C-1 & C-2
 6th ELECTION DISTRICT
 HOWARD COUNTY, MARYLAND
 CONTRACT NO. 24-3313-D

SCALE AS SHOWN
 SHEET 2 OF 2