

CONTRACT NO. 34-3307-D

VILLAGE OF HARPER'S CHOICE

PHASE 2

HOWARD COUNTY, MARYLAND

DEPARTMENT OF PUBLIC WORKS

AS-BUILT 1/18/96

V.H.C. 5/9

ws/1

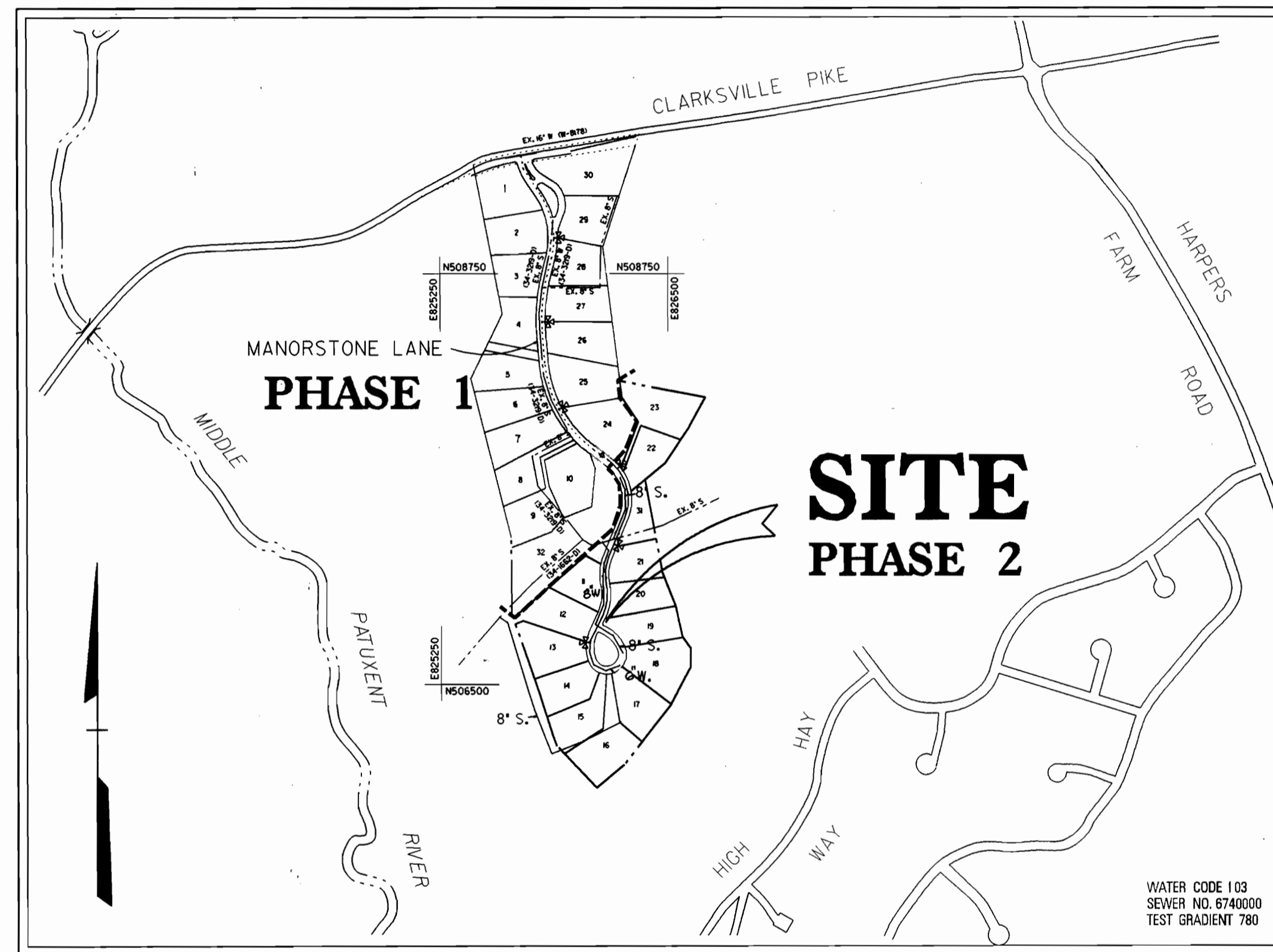
3307

GENERAL NOTES

PART I

1. APPROXIMATE LOCATION OF EXISTING MAINS ARE SHOWN. THE CONTRACTOR SHALL TAKE ALL NECESSARY PRECAUTIONS TO PROTECT EXISTING MAINS AND SERVICES AND MAINTAIN UNINTERRUPTED SUPPLY. ANY DAMAGE INCURRED SHALL BE REPAIRED IMMEDIATELY TO THE SATISFACTION OF THE ENGINEER AT THE CONTRACTOR'S EXPENSE.
2. ALL HORIZONTAL CONTROLS ARE BASED ON MARYLAND STATE COORDINATES.
3. ALL VERTICAL CONTROLS ARE BASED ON U.S.G.S. DATA.
4. ALL PIPE ELEVATIONS SHOWN ARE INVERT ELEVATIONS.
5. CLEAR ALL UTILITIES BY A MINIMUM OF 6'. CLEAR ALL POLES BY 2' - 0" MINIMUM OR TUNNEL AS REQUIRED. THE OWNER HAS CONTACTED THE UTILITY COMPANIES AND HAS MADE ARRANGEMENTS FOR BRACING OF POLES AS SHOWN ON THE DRAWINGS. IN THE EVENT THE CONTRACTOR'S WORK REQUIRES THE BRACING OF ADDITIONAL POLES, ANY COST INCURRED BY THE OWNER FOR BRACING OF ADDITIONAL POLES OR DAMAGES SHALL BE DEDUCTED FROM MONEY OWED THE CONTRACTOR. THE CONTRACTOR SHALL COORDINATE WITH THE UTILITY COMPANIES TO SCHEDULE THE BRACING OF THE POLES.
6. FOR DETAILS NOT SHOWN ON THE DRAWINGS AND FOR MATERIALS AND CONSTRUCTION METHOD USE HOWARD COUNTY DESIGN MANUAL, VOLUME IV, STANDARD SPECIFICATIONS AND DETAIL FOR CONSTRUCTION (LATEST EDITION). THE CONTRACTOR SHALL HAVE A COPY OF VOLUME IV ON THE JOB.
7. WHERE TEST PITS HAVE BEEN MADE ON EXISTING UTILITIES, THEY ARE OR NOTES CONTAINING THE RESULTS OF THE TEST PIT OR PITS IS INCLUDED ON THE DRAWINGS. EXISTING UTILITIES IN THE VICINITY OF THE PROPOSED WORK FOR WHICH TEST PITS HAVE NOT BEEN DUG SHALL BE LOCATED BY THE CONTRACTOR TWO WEEKS IN ADVANCE OF CONSTRUCTION OPERATIONS AT HIS OWN EXPENSE.
8. CONTRACTOR SHALL NOTIFY THE FOLLOWING UTILITY COMPANIES OR AGENCIES AT LEAST FIVE WORKING DAYS BEFORE STARTING WORK SHOWN ON THESE PLANS:

STATE HIGHWAY ADMINISTRATION	531-5533
BG&E CO. CONTRACTOR SERVICES	850-4620
BG&E CO. UNDER GROUND DAMAGE CONTROL	787-9068
MES'S UTILITY	1-800-257-7777
COLONIAL PIPELINE CO.	795-1390
HOWARD COUNTY DEPARTMENT OF PUBLIC WORKS BUREAU OF UTILITIES	313-4900



VICINITY MAP

SCALE: 1" = 600'

TYPE OF BUILDING:	SINGLE FAMILY
NO. OF LOTS / PARCELS	13
NO. OF WATER HOUSE CONNECTIONS:	13
NO. OF SEWER HOUSE CONNECTIONS:	13
DRAINAGE AREA:	MIDDLE PATUXENT
TREATMENT PLANT:	LITTLE PATUXENT WATER QUALITY MANAGEMENT CENTER, SAVAGE, HOWARD COUNTY

ITEM	QUANTITIES ESTIMATED	QUANTITIES		AS-BUILT	
		QUANTITIES	TYPE	MANUFACTURER	SUPPLIER
8" W.	1085 LF	1085 LF	D.I.P. 4-52	Griffin	
6" W.	298 LF	301 LF	D.I.P. 4-52	Griffin	
8" S.	2183 LF	2180 LF	P.V.C. 32"	J.M. Manufacturing	
8" D.I.P.	114 LF	114 LF	D.I.P. 4-52	Griffin	
4" S.	362 LF	365 LF	P.V.C.	J.M. Manufacturing	
1/2" W.H.C.	260 LF	265 LF	Copper	Halstead Co.	
FIRE HYDRANT	3 EA	3 EA	D.I.P.	Griffin	
4" DIA. MH	19 EA	19 EA	Conc.	Atlantic Conc.	
6" VALVE	1 EA	1 EA	D.I.P.	Griffin	
8" x 6" R	1 EA	1 EA	D.I.P.	Griffin	

BENCHMARK

DESCRIPTION
STATION 2838003 3/4" REINFORCING ROD, 0.5' BELOW SURFACE N 508916.632, E 824630.474 ELEV. 367.204'

BENCHMARK

DESCRIPTION
STATION 2838002 CONCRETE MONUMENT, 0.5' BELOW SURFACE N 509424.956, E 825625.556 ELEV. 434.527'

NAME OF UTILITY CONTRACTOR W.F. WILSON
SURVEY AND DRAFTING DIVISION AS-BUILT DATE

REVIEWED FOR HOWARD SOIL CONSERVATION DISTRICT AND MEETS TECHNICAL REQUIREMENT

Patricia Engle 6/3/94
SIGNATURE DATE

THIS DEVELOPMENT PLAN IS APPROVED FOR SOIL EROSION AND SEDIMENT CONTROL BY THE HOWARD COUNTY CONSERVATION DISTRICT

APPROVED *John R. Robertson* 6/3/94
HOWARD C.C.D. DATE

SEDIMENT CONTROL MEASURES WILL BE IMPLEMENTED IN ACCORDANCE WITH SECTION 219 OF THE SPECIFICATIONS AND WITH ROAD CONSTRUCTION PLANS F-94-11.

DEPARTMENT OF PUBLIC WORKS
HOWARD COUNTY, MARYLAND

James G. Lewis 6/2/94
DIRECTOR OF PUBLIC WORKS - DATE

Robert R. Bennett 5-27-94
CHIEF - BUREAU OF UTILITIES - DATE

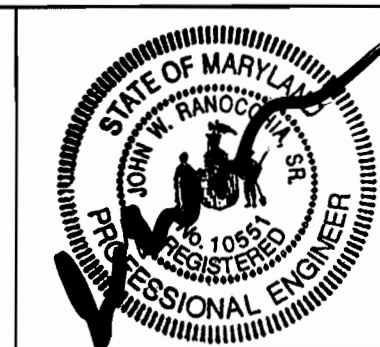
Robert R. Bennett 6/6/94
CHIEF - BUREAU OF ENGINEERING - DATE

John R. Robertson 6/6/94
CHIEF - LAND DEVELOPMENT DIVISION - DATE

DMW
Daft · McCune · Walker, Inc.

A Team of Land Planners, Landscape Architects, Engineers, Surveyors & Environmental Professionals

200 East Pennsylvania Avenue
Towson, Maryland 21286
410 296 3333
Fax 296 4705



DESIGN BY:	RTP			
DRAWN BY:	RTP			
CHECKED BY:	JWR			
DATE:	Nov 93			

BY	NO.	REVISION	DATE

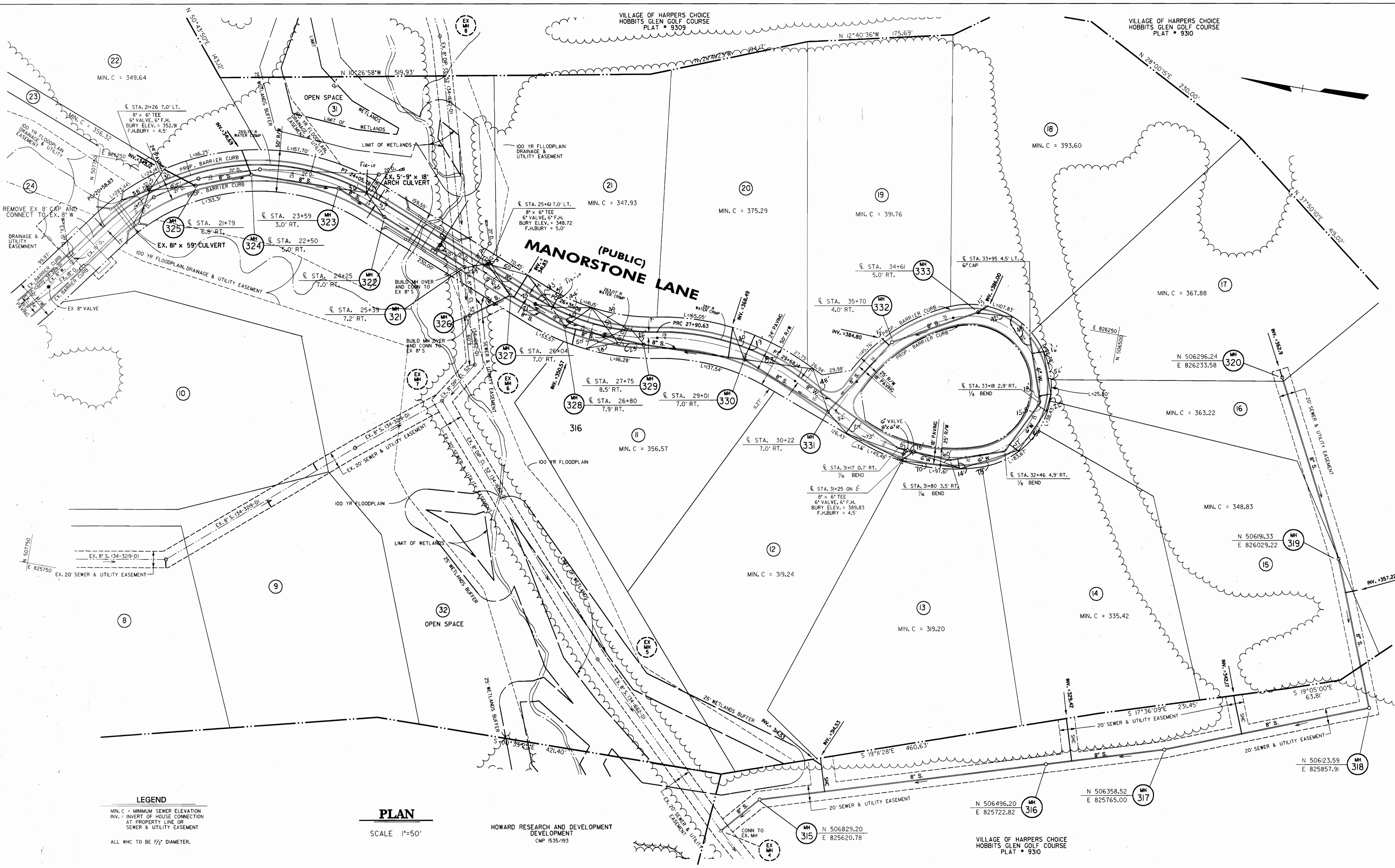
TITLE SHEET

600 SCALE MAP NO. 29 BLOCK NO. 15,21

COLUMBIA
VILLAGE OF HARPER'S CHOICE
SECTION 5 AREA 9 PHASE 2
LOTS 11-23 & 31
5th ELECTION DISTRICT
CONTRACT NO. 34-3307-D

SCALE AS SHOWN
SHEET 1 OF 4

3307 ws/2 V.H.C. 5/9



DEPARTMENT OF PUBLIC WORKS
 HOWARD COUNTY, MARYLAND

James P. Sullivan 5/27/94
 DIRECTOR OF PUBLIC WORKS - DATE

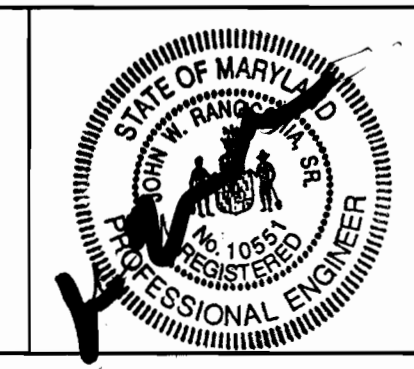
Robert M. Swain 5-27-94
 CHIEF - BUREAU OF UTILITIES - DATE

Paul W. Brown 6/6/94
 CHIEF - BUREAU OF ENGINEERING - DATE

Michael J. ... 6/6/94
 CHIEF - LAND DEVELOPMENT DIVISION - DATE

DMW
Daft · McCune · Walker, Inc.

A Team of Land Planners, 200 East Pennsylvania Avenue
 Landscape Architects, Towson, Maryland 21286
 Engineers, Surveyors & Environmental Professionals 410 296 3333
 Fax 296 4705



DESIGN BY:	RTP
DRAWN BY:	RTP
CHECKED BY:	JWR
DATE:	Nov 93
BY NO.	REVISION
DATE	600 SCALE MAP NO. 29 BLOCK NO. 15,21

WATER & SEWER PLAN

COLUMBIA
VILLAGE OF HARPER'S CHOICE
SECTION 5 AREA 9 PHASE 2
LOTS 11-23 & 31
5th ELECTION DISTRICT
 CONTRACT NO. 34-3307-D

SCALE AS SHOWN
 SHEET 2 OF 4

AS-BUILT 1/18/96

V.H.C. 7/9

ws/3

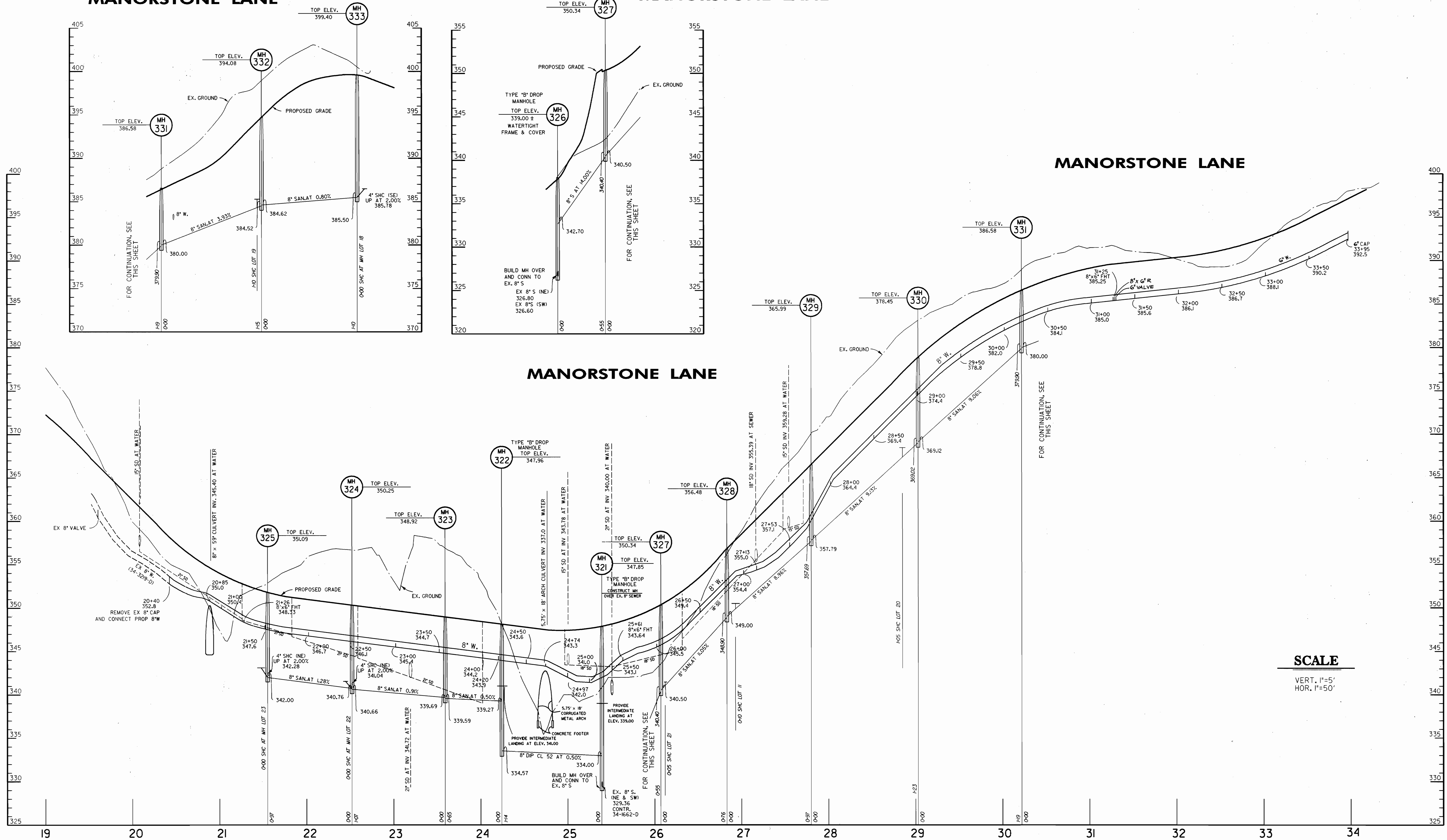
3307

MANORSTONE LANE

MANORSTONE LANE

MANORSTONE LANE

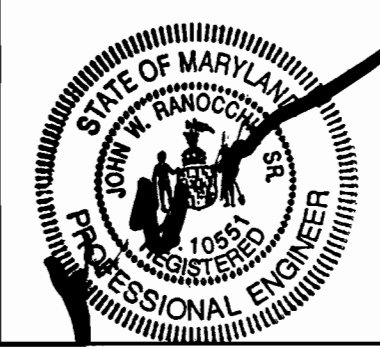
MANORSTONE LANE



SCALE
 VERT. 1"=5'
 HOR. 1"=50'

DEPARTMENT OF PUBLIC WORKS
 HOWARD COUNTY, MARYLAND
 Director of Public Works - DATE
 Chief - Bureau of Engineering - DATE
 Chief - Bureau of Utilities - DATE
 Chief - Land Development Division - DATE

DMW
 Daft · McCune · Walker, Inc.
 A Team of Land Planners, Landscape Architects, Engineers, Surveyors & Environmental Professionals
 200 East Pennsylvania Avenue
 Towson, Maryland 21286
 410 296 3333
 Fax 296 4705



DESIGN BY:	RTP			
DRAWN BY:	RTP			
CHECKED BY:	JWR			
DATE:	Nov 93			
BY NO.		REVISION	DATE	

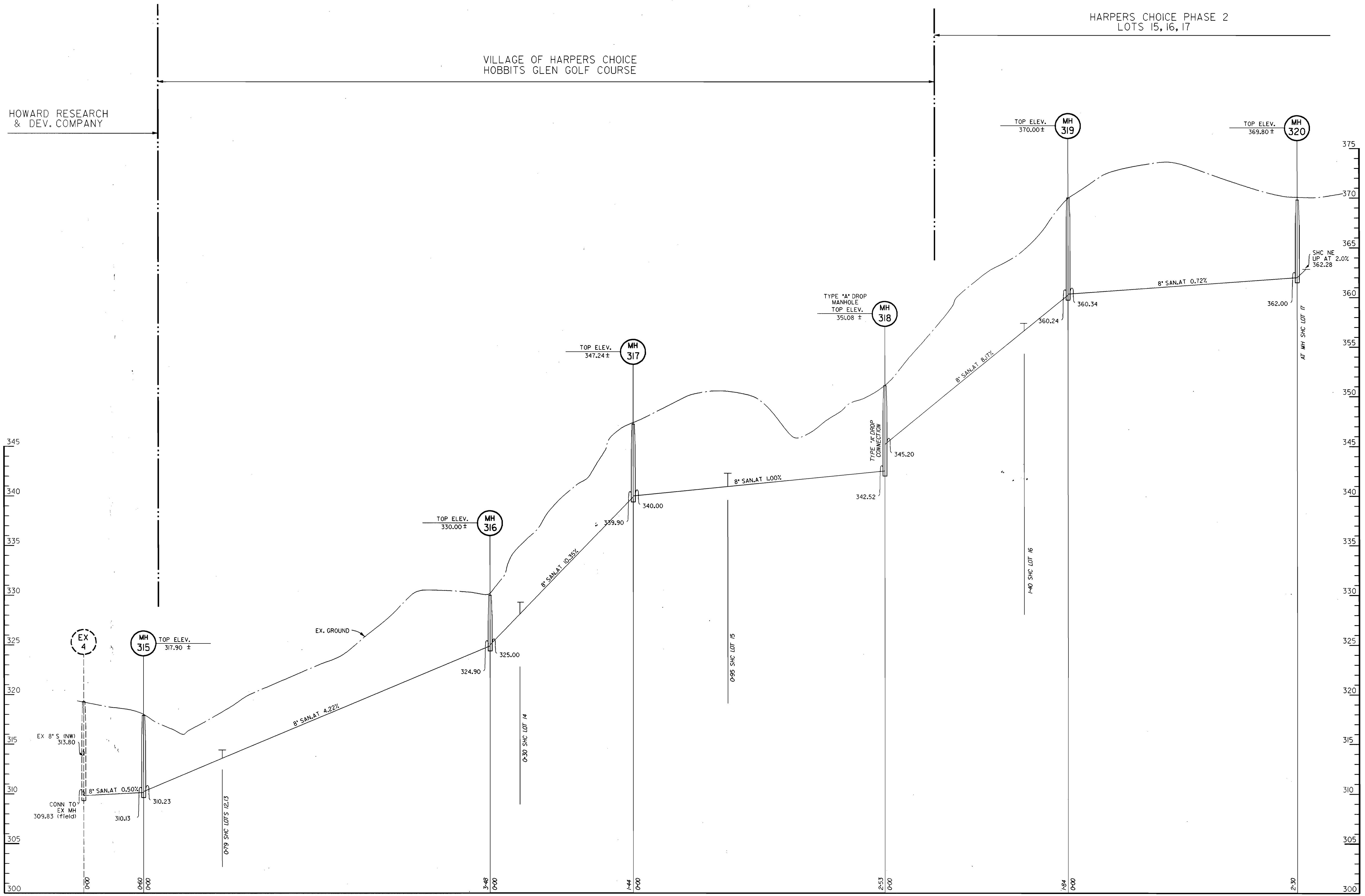
WATER & SEWER PROFILES
 600 SCALE MAP NO. 29 BLOCK NO. 15,21

COLUMBIA
 VILLAGE OF HARPER'S CHOICE
 SECTION 5 AREA 9 PHASE 2
 LOTS 11-23 & 31
 5th ELECTION DISTRICT
 CONTRACT NO. 34-3307-D

SCALE AS SHOWN
 SHEET 3 OF 4

AS-BUILT 1/18/94

3307 WS/4 V.H.C. 5/9



SCALE

VERT. 1"=5'
HOR. 1"=50'

DEPARTMENT OF PUBLIC WORKS
HOWARD COUNTY, MARYLAND

James M. Lewis 6/1/94
DIRECTOR OF PUBLIC WORKS - DATE

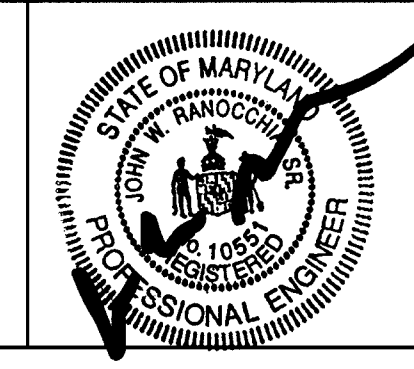
Robert D. Buisson 5-27-94
CHIEF - BUREAU OF UTILITIES - DATE

Robert J. Pappas 6/6/94
CHIEF - BUREAU OF ENGINEERING - DATE

Mike Damman 6/6/94
CHIEF - LAND DEVELOPMENT DIVISION - DATE

DMW
Daft · McCune · Walker, Inc.

A Team of Land Planners, 200 East Pennsylvania Avenue, Towson, Maryland 21286
Landscape Architects, Engineers, Surveyors & Environmental Professionals
410 296 3333
Fax 296 4705



DESIGN BY:	RTP			
DRAWN BY:	RTP			
CHECKED BY:	JWR			
DATE:	AUG 1993			
BY	NO.	REVISION	DATE	

WATER & SEWER PROFILES

600 SCALE MAP NO. 29 BLOCK NO. 15.21

COLUMBIA
VILLAGE OF HARPER'S CHOICE
SECTION 5 AREA 9 PHASE 2
LOTS 11-23 & 31
5th ELECTION DISTRICT
CONTRACT NO. 34-3307-D

SCALE AS SHOWN
SHEET 4 OF 4