

AS-BUILT HOUSE CONNECTION LOCATIONS

PARCEL NO.	TYPE	DESCRIPTION
PARCEL A-44	WATER	24.0' TO EX. W.V. IN SNOWDEN SQ. CR. 24.0' TO MH. 203A 28.0' TO MH. 203
	SEWER	12.0' TO MH. 203 25.0' TO NEW 6" V
PARCEL A-45	WATER	25.0' TO NEW 6" V 25.0' TO MH. 204 15.0' TO SEWER SERVICE PARCEL A-45
	SEWER	15.0' TO MH. 204 28.0' TO NEW 6" V
PARCEL A-46	WATER	38.4' TO MH. 205 1.0' TO 8" V 23.0' TO SEWER SERVICE PARCEL A-46
	SEWER	18.4' TO MH. 205 12.4' TO 8" V
PARCEL A-47	WATER	18.0' TO 8" V 22.0' TO 6" P.H. V 8.4' TO 8" V
	SEWER	31.0' TO 6" P.H. 10.0' TO 8" V 26.0' TO 6" P.H. V
PARCEL A-48	WATER	10.0' TO 8" V 22.0' TO 6" P.H. V
PARCEL A-49	SEWER	10.0' TO MH. 202 32.0' TO 6" SIB FROM MH. 202
PARCEL A-43	SEWER	10.0' TO MH. 202 32.0' TO 6" SIB FROM MH. 202
GRADE FROM MH. 200 TO PARCEL A-43		0.0' TO MH. 200 17.0' TO 15L BOX

TYPE OF BUILDING	RETAIL
NUMBER OF UNITS	5 BUILDABLE PARCELS
NUMBER OF SHC's	0
NUMBER OF WHC's	0
DRAINAGE AREA	LITTLE PATUKENT

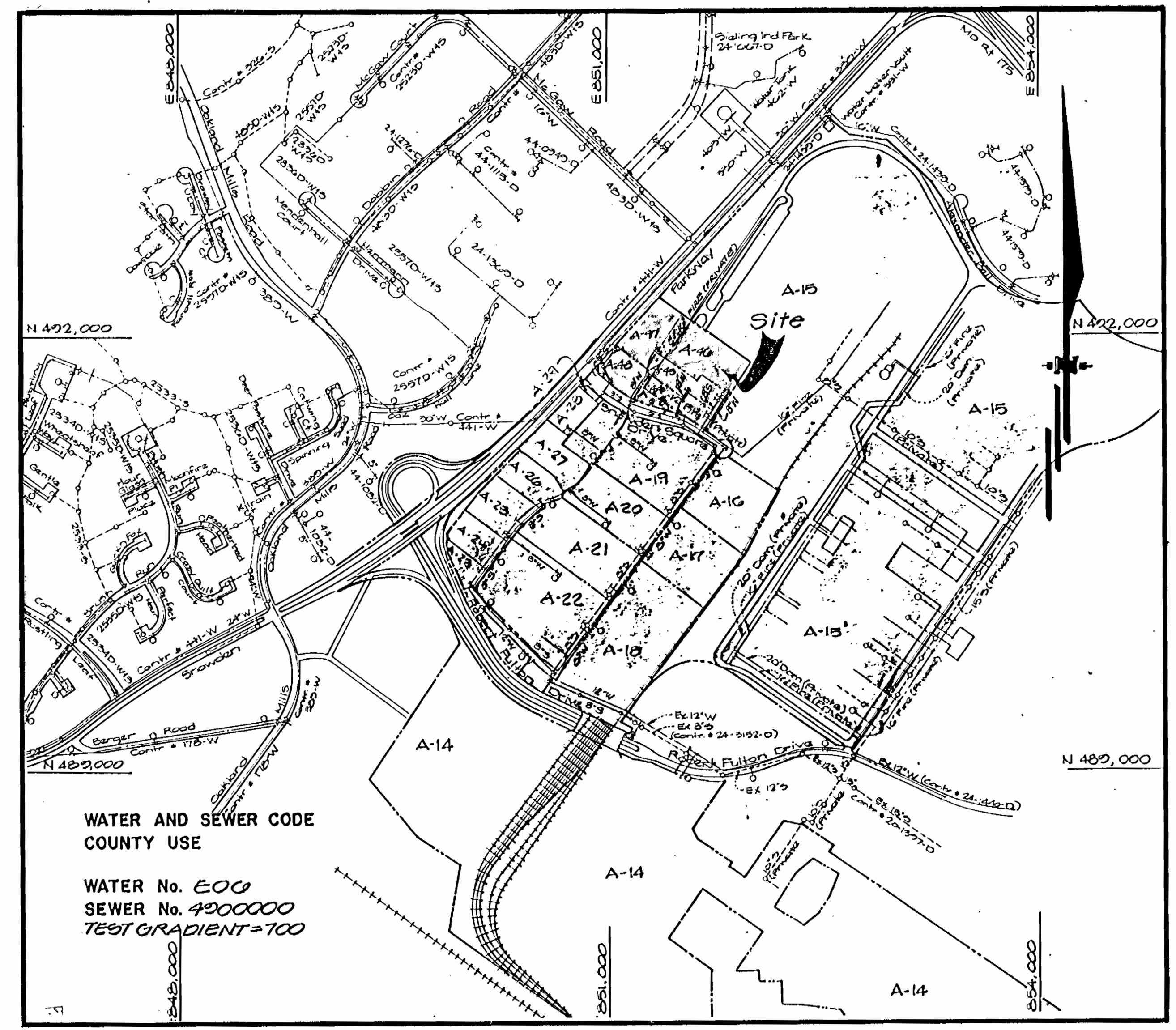
WASTE WATER TREATMENT PLANT-LITTLE PATUKENT
WATER QUALITY MANAGEMENT CENTER SAVAGE, HOWARD COUNTY
GENERAL NOTES

- PART I -**
- Approximate location of existing mains are shown. The contractor shall take all necessary precautions to protect existing mains and services and maintain uninterrupted supply. Any damage incurred shall be repaired immediately to the satisfaction of the Engineer at the Contractor's expense.
 - All horizontal controls are based on Maryland State Coordinates.
 - All vertical controls are based on U.S.G.S. data.
 - All pipe elevations shown are invert elevations.
 - Clear all utilities by a minimum of 6". Clear all poles by a 2'-0" minimum or tunnel as required. The owner has contacted the utility companies and has made arrangements for bracing of poles as shown on the drawings. In the event the contractor's work requires the bracing of additional poles, any cost incurred by the owner for the bracing of additional poles or damages shall be deducted from money owed the contractor. The contractor shall coordinate with the utility companies to schedule the bracing of the poles.
 - For details not shown on the drawings, and for materials and construction methods, use Howard County Design Manual, Volume IV, Standard Specifications and Detail for Construction (Latest Edition). The contractor shall have a copy of Volume IV on the job.
 - Where test pits have been made on existing utilities, they are noted by the symbol at the location of the test pit. A note or notes containing the results of the test pit or pits is included on the drawings. Existing utilities in the vicinity of the proposed work for which test pits have not been dug, shall be located by the contractor two weeks in advance of construction operations at his own expense.
 - Contractor shall notify the following utility companies or agencies at least five working days before starting work shown on these plans:

State Highway Administration	531-5533
BG&E Co. Contractor Services	850-4820
BG&E Co. Under Ground Damage Control	787-9088
Miss Utility	1-800-257-7777
Colonial Pipeline Co.	795-1390
Howard County Dept. of Public Works, Bur. of Utilities	313-4900
 - Trees and shrubs are to be protected from damage to maximum extent. Trees and shrubs located within the construction strip are not to be removed or damaged by the contractor.
 - Contractor shall remove trees, stumps and roots along line of excavation. Payment for such removal shall be included in the unit price bid for construction of the main.

- PART II - WATER**
- All water mains to be D.I.P. Class 52 unless otherwise noted.
 - Tops of all water mains to have a minimum of 3'-1/2' cover unless otherwise noted.
 - Valves adjacent to tees shall be strapped to tees.
 - All fittings shall be buttressed or anchored with concrete in accordance with the Standard Details unless otherwise provided for on the drawings.
 - Fire hydrants shall be set to the bury line elevations shown on the drawings. All fire hydrants shall be RESTRAINED AND buttressed with concrete in accordance with Standard Details. Soil around the fire hydrant shall be compacted in accordance with Section 1000 and 1005 of the Standard Specifications.
 - The contractor shall not operate any water main valves on the existing water system.
 - All water house connections shall be for inside meter setting unless otherwise noted on plans or in specifications.

- PART III - SEWER**
- All sewer mains shall be DIP, RCP, VCPX, CSPX, RCCP and P.V.C. unless otherwise noted.
 - The contractor shall provide a joint in all sewer mains within 2'-0" of exterior manhole wall.
 - All manholes shall be 4'-0" inside diameter unless otherwise noted.
 - Force mains shall be D.I.P. only.
 - Manholes shown with 12" and 18" walls are for brick manholes only.
 - Manholes designated W.T. in plan and profile shall have watertight frame and covers, Standard Detail G5.52. Where watertight manhole frame and cover is used, set top of frame 1'-8" above finished grade unless otherwise noted on the drawings.
 - House(s) with the symbol "C.N.S." indicates that the cellar cannot be served.



WATER AND SEWER CODE COUNTY USE
WATER No. E00
SEWER No. 4200000
TEST GRADIENT = 700

NOTE: CONTRACTOR SHALL SEQUENCE THE CONSTRUCTION OF THIS CONTRACT TO AVOID ANY POSSIBLE CONFLICTS WITH SEDIMENT CONTROL MEASURES INSTALL UNDER SDP 92-42. (F-99-10)

Sediment Control Measures will be implemented in accordance with Section 219 of the Specifications & with SITE DEVELOPMENT PLAN SDP 92-42, F-10-16; Drawings 1-10/13 Sediment & Erosion Control.

REVIEWED FOR HOWARD SOIL CONSERVATION DISTRICT AND MEETS TECHNICAL REQUIREMENT.
[Signature] 9/22/93
SIGNATURE DATE
U.S. SOIL CONSERVATION SERVICE

THIS DEVELOPMENT PLAN IS APPROVED FOR SOIL EROSION AND SEDIMENT CONTROL BY THE HOWARD SOIL CONSERVATION DISTRICT.

APPROVED:
[Signature] 9/22/93
HOWARD S.C.D. DATE

DEPARTMENT OF PUBLIC WORKS
HOWARD COUNTY, MARYLAND
[Signature] 9/23/93
DIRECTOR OF PUBLIC WORKS DATE
[Signature] 7-17-93
CHIEF, BUREAU OF UTILITIES DATE
[Signature] 9/23/93
CHIEF, LAND DEVELOPMENT DIV. DATE

GW GUTSCHICK LITTLE & WEBER, P.A.
ENGINEERS, PLANNERS, SURVEYORS
3908 NATIONAL DRIVE SUITE 250 - BURTONSVILLE OFFICE PARK
BURTONSVILLE, MD. 20888
(301) 421-4024



DES: rjt.
DRN: W.S.J.
CHK: C.K.G.
DATE: 9/20/93
BY NO. REVISION DATE

TITLE SHEET
600' SCALE MAP NO. 42 BLOCK NO. 510

GATEWAY COMMERCE CENTER
PARCELS A-44 THRU A-48
(A REZONATION OF GATEWAY COMMERCE CENTER PARCELS A-30 AND G-1 ELECTION DISTRICT, HOWARD COUNTY, MARYLAND)
CONTRACT NO. 24-3289-D

SCALE AS SHOWN
SHEET 1 OF 2

CONTRACT NO. 24-3289-D
GATEWAY COMMERCE CENTER
PARCELS A-44 THRU A-48

HOWARD COUNTY, MARYLAND
DEPARTMENT OF PUBLIC WORKS

ITEMS	QUANTITIES ESTIMATED	AS-BUILT		
		QUANTITIES	TYPE	MANUFACTURER/SUPPLIER
8" SEWER P.V.C.	683 L.F.	505	PVC-8UR 35	J.M. MANUFACTURING
4" MANHOLE	6 ea.	6	4'-0" DIA.	ATLANTIC CONC. PROD.
8" WATER	1008 L.F.	1008	21-82 D.I.P.	ATLANTIC STATES
FIRE HYDRANT VALVE	3 ea.	3	6" DIA.	MUELLER
6" VALVE	3 ea.	3	6" DIA.	MUELLER
6" WATER	110 L.F.	110	21-82 D.I.P.	ATLANTIC STATES
6" SEWER	48 L.F.	50	PVC-8UR 35	J.M. MANUFACTURING
6" VALVE	2 ea.	2	6" DIA.	MUELLER
8" SEWER - D.I.P.	143 L.F.	143	21-82 D.I.P.	ATLANTIC STATES

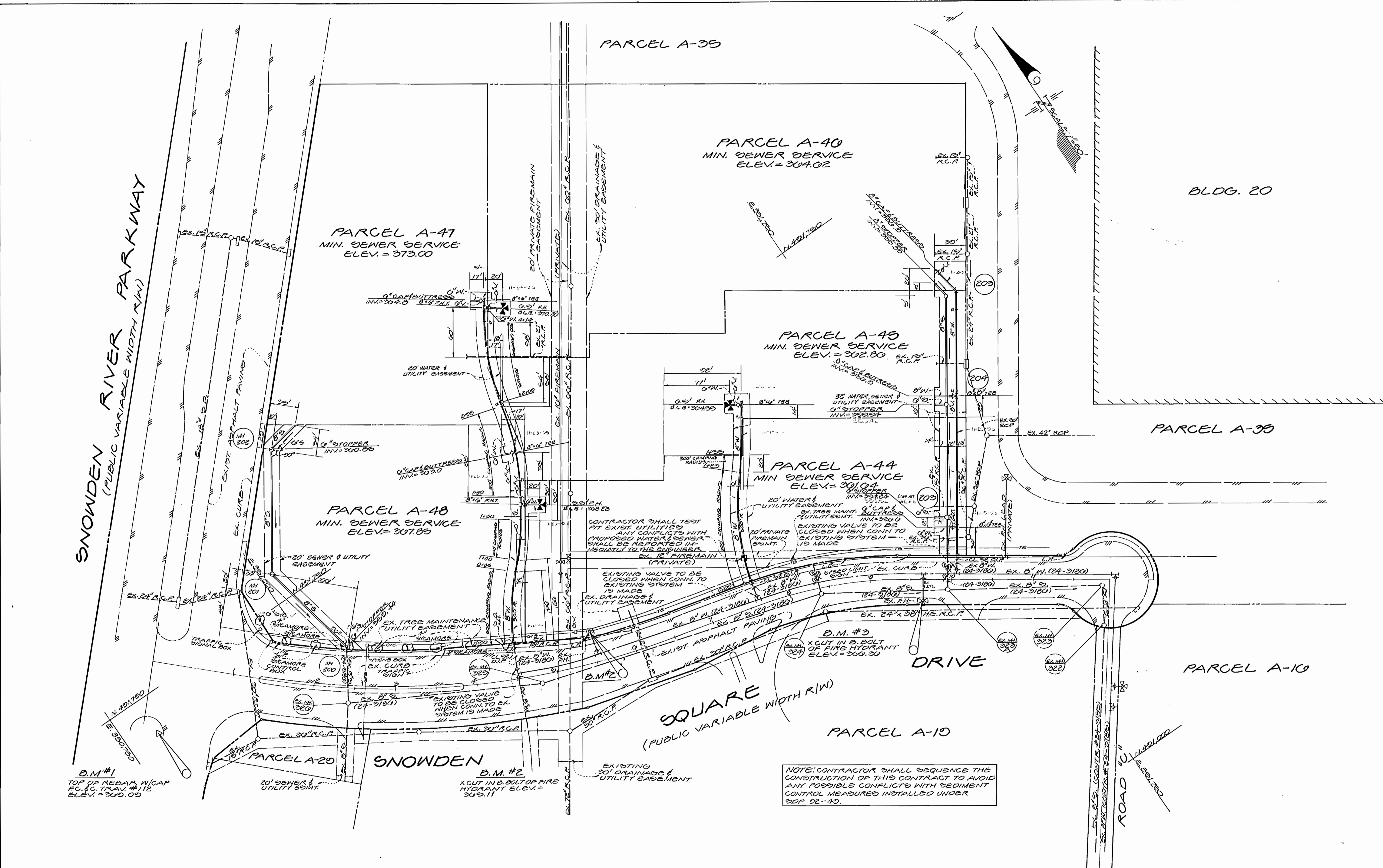
NAME OF UTILITY CONTRACTOR:

SURVEY AND DRAFTING DIV. CHECKBOX: AS-BUILT DATE: 12-1-93

AS-BUILT 3/17/94

17/5 3289-D/1

W/S 3289-DFE



DEPARTMENT OF PUBLIC WORKS
HOWARD COUNTY, MARYLAND

Robert J. Seaman 9/23/93
DIRECTOR OF PUBLIC WORKS DATE

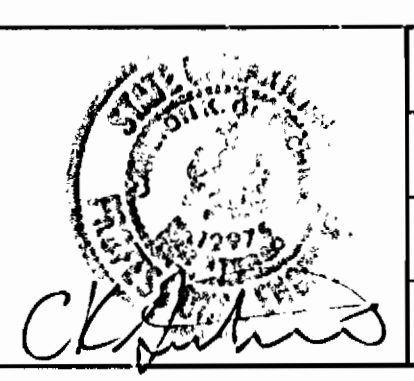
Robert J. Seaman 9/23/93
CHIEF, BUREAU OF ENGINEERING DATE

Robert J. Seaman 9/17/93
CHIEF, BUREAU OF UTILITIES DATE

Robert J. Seaman 9/17/93
CHIEF, LAND DEVELOPMENT DIV. DATE

G&W GUTSCHICK LITTLE & WEBER, P.A.
ENGINEERS, PLANNERS, SURVEYORS

3909 NATIONAL DRIVE SUITE 250 BURTONTSVILLE OFFICE PARK
BURTONTSVILLE, MD. 20886
(301) 421-4024



DES: rjt.					
DRN: W.S.J.					
CHK: C.K.G.					
DATE: 9/20/93	BY:	NO.:	REVISION:	DATE:	

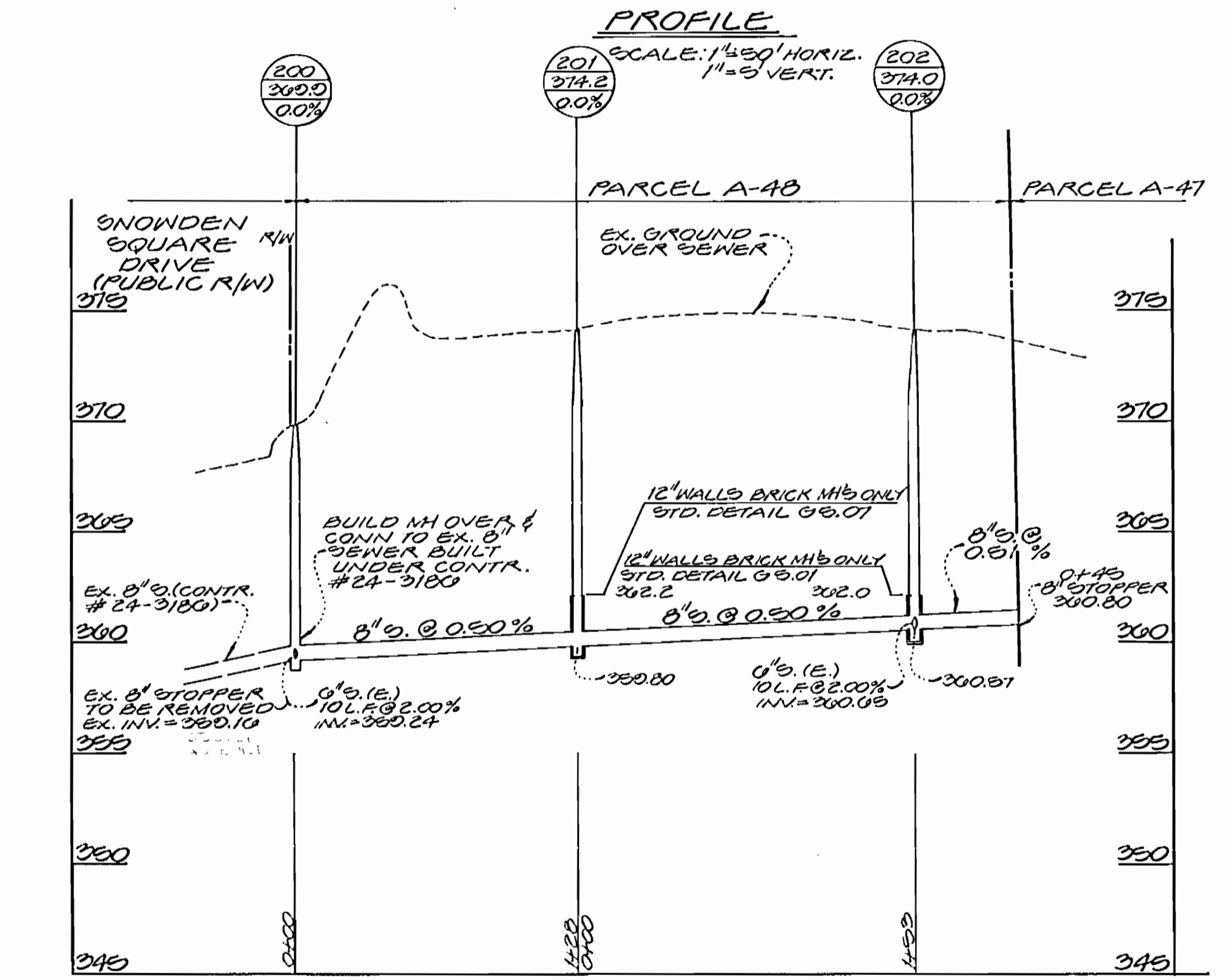
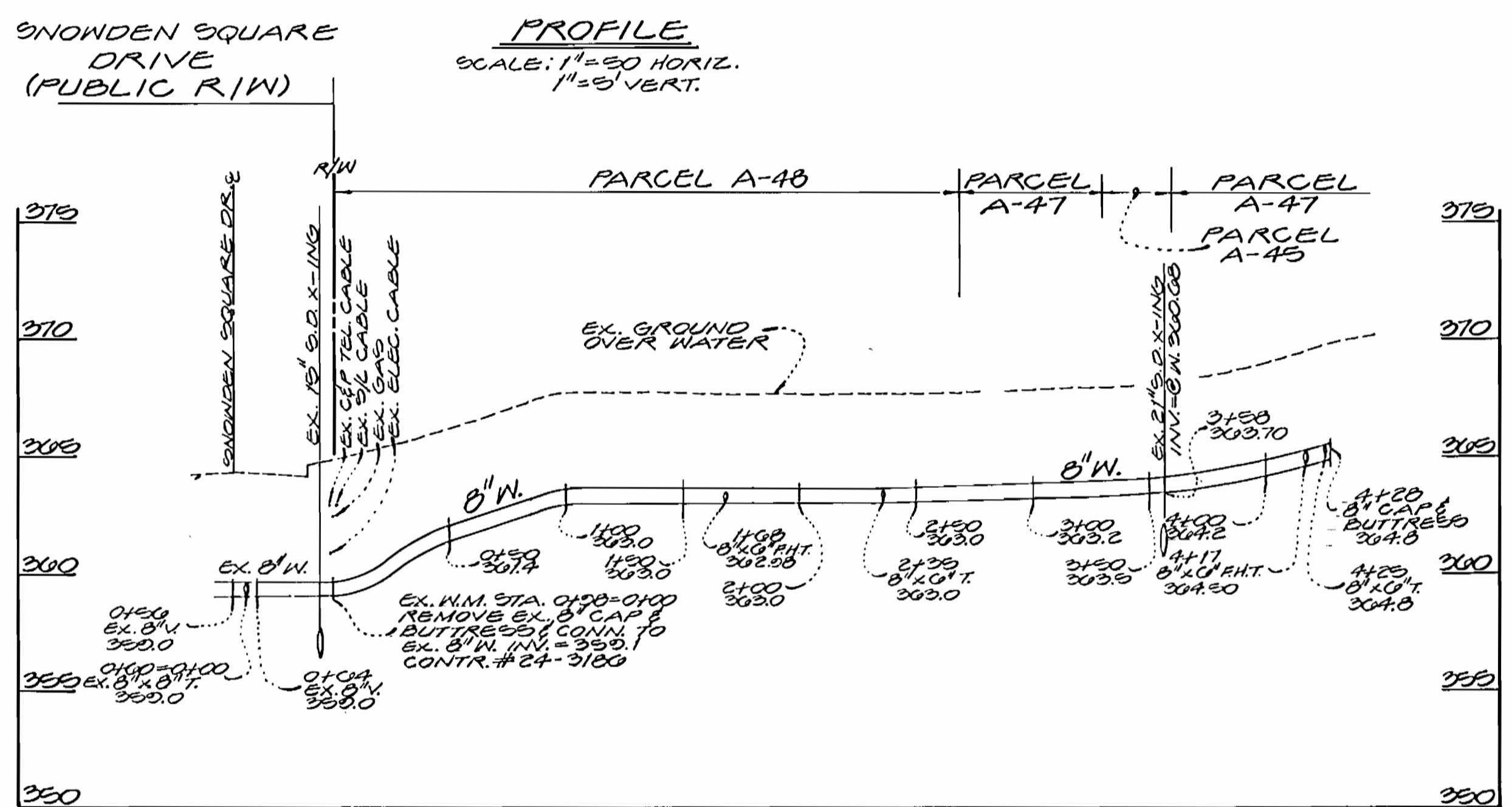
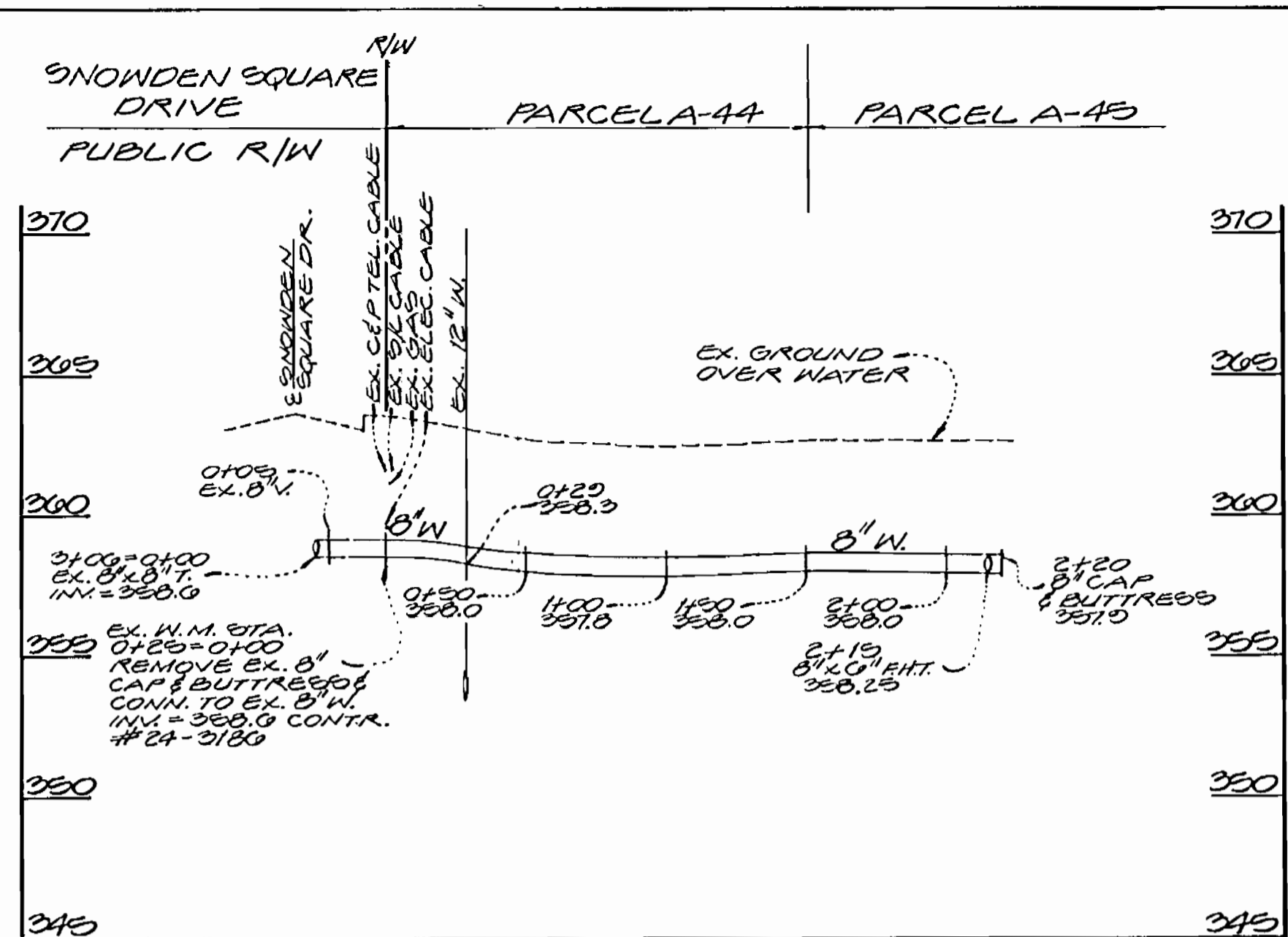
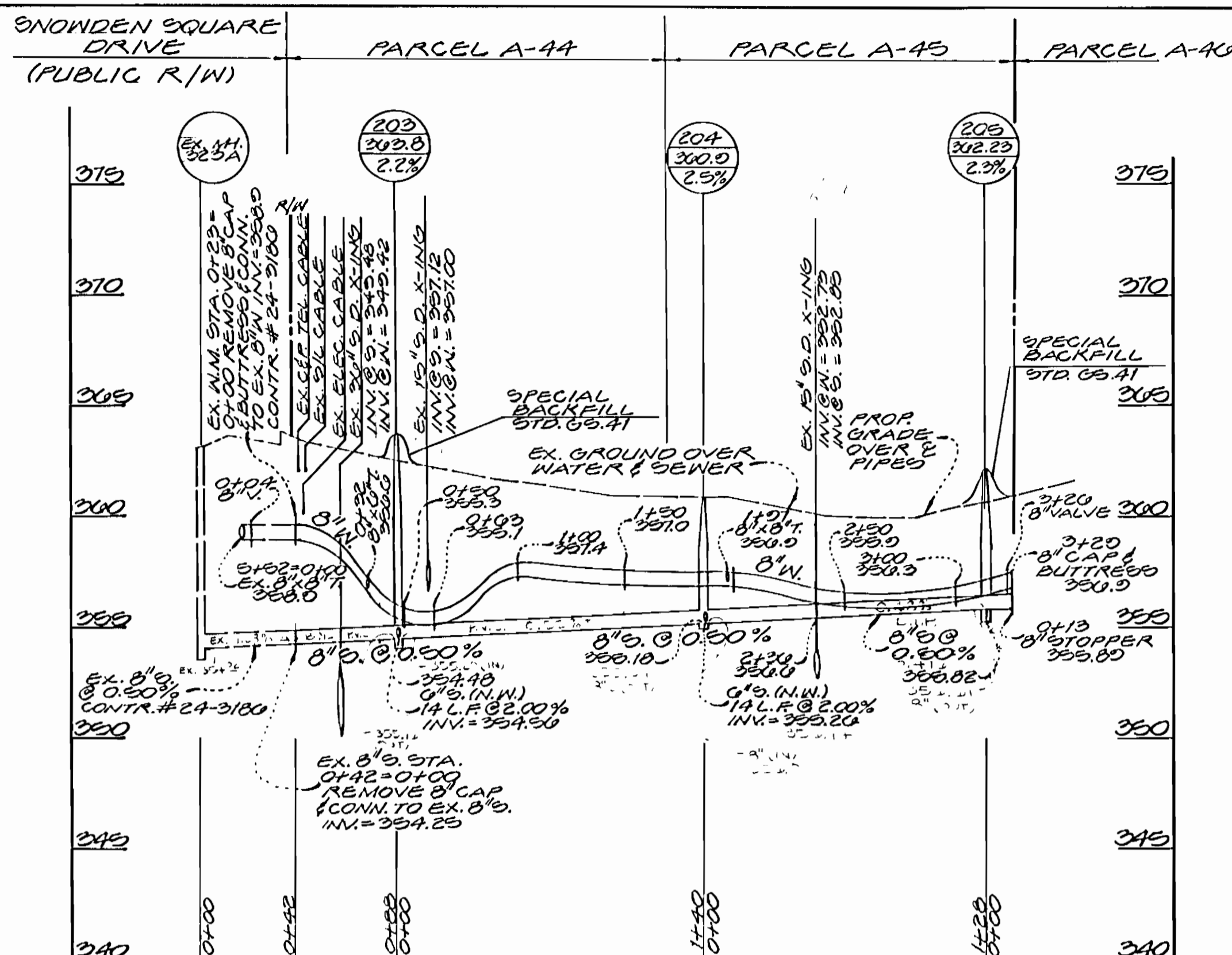
WATER & SEWER CONSTRUCTION PLAN
SCALE: 1" = 20'

600' SCALE MAP NO. 42 BLOCK NO. 510

GATEWAY COMMERCE CENTER
PARCELS A-44 THRU A-48
A REUBDIVISION OF GATEWAY COMMERCE CENTER PARCELS A-40 THRU A-48
GTH ELECTION DISTRICT, HOWARD COUNTY, MARYLAND
CONTRACT NO. 24-3280-D

SCALE AS SHOWN
SHEET 2 OF 3

AS-BUILT 3/11/93



NOTE: CONTRACTOR SHALL SEQUENCE THE CONSTRUCTION OF THIS CONTRACT TO AVOID ANY POSSIBLE CONFLICTS WITH SEDIMENT CONTROL MEASURES INSTALLED UNDER GPD 02-40

W/S 3289-D / 3

DEPARTMENT OF PUBLIC WORKS
HOWARD COUNTY, MARYLAND

Paul J. Popson 9/23/93
DIRECTOR OF PUBLIC WORKS DATE

Robert W. Berman 9-17-93
CHIEF, BUREAU OF UTILITIES DATE

Paul J. Popson 9/23/93
CHIEF, BUREAU OF ENGINEERING DATE

Mark J. Decker 9/23/93
CHIEF, LAND DEVELOPMENT DIV. DATE

GWV GUTSCHICK LITTLE & WEBER, P.A.
ENGINEERS, PLANNERS, SURVEYORS

3909 NATIONAL DRIVE SUITE 250 BURTONTOWNE OFFICE PARK
BURTONTOWNE, MD 20866
(301) 421-4024



DES: rjt.					
DRN: W.S.J.					
CHK: C.K.G.					
DATE: 8/20/93	BY:	NO.	REVISION	DATE	

WATER & SEWER PROFILES

SCALE: HORIZONTAL: 1" = 50'
VERTICAL: 1" = 5'

600' SCALE MAP NO. 42 BLOCK NO. 560

GATEWAY COMMERCE CENTER
PARCELS A-44 THRU A-48

(A RESUBDIVISION OF GATEWAY COMMERCE CENTER PARCELS A-20A THRU A-20H)
6TH ELECTION DISTRICT HOWARD COUNTY, MARYLAND

CONTRACT NO. 24-3289-D

SCALE AS SHOWN

SHEET 2 OF 2

AS-BUILT