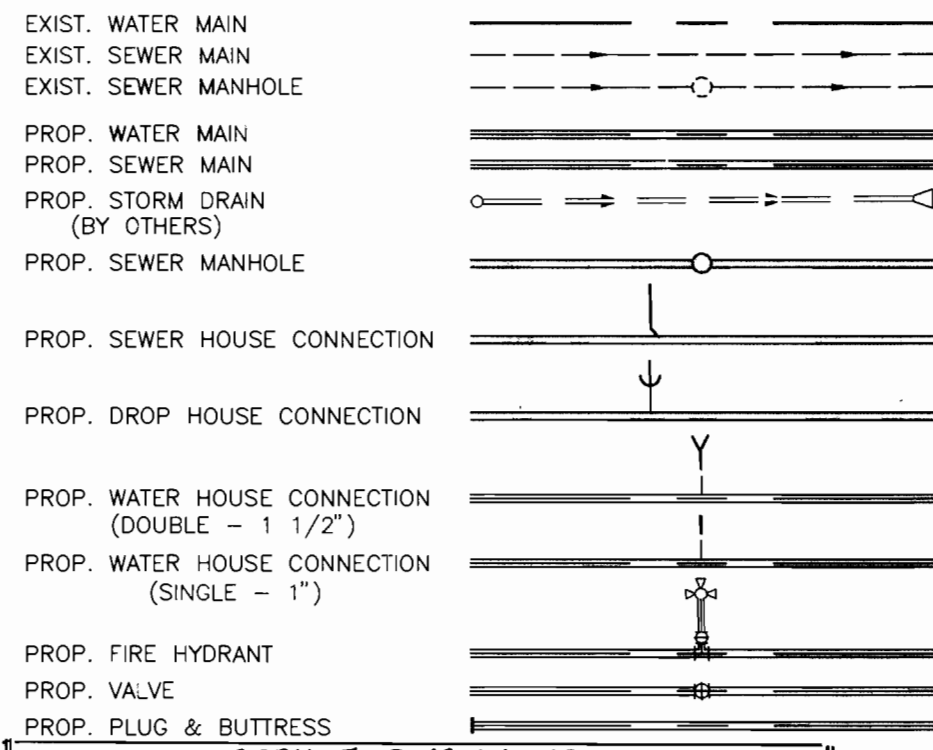
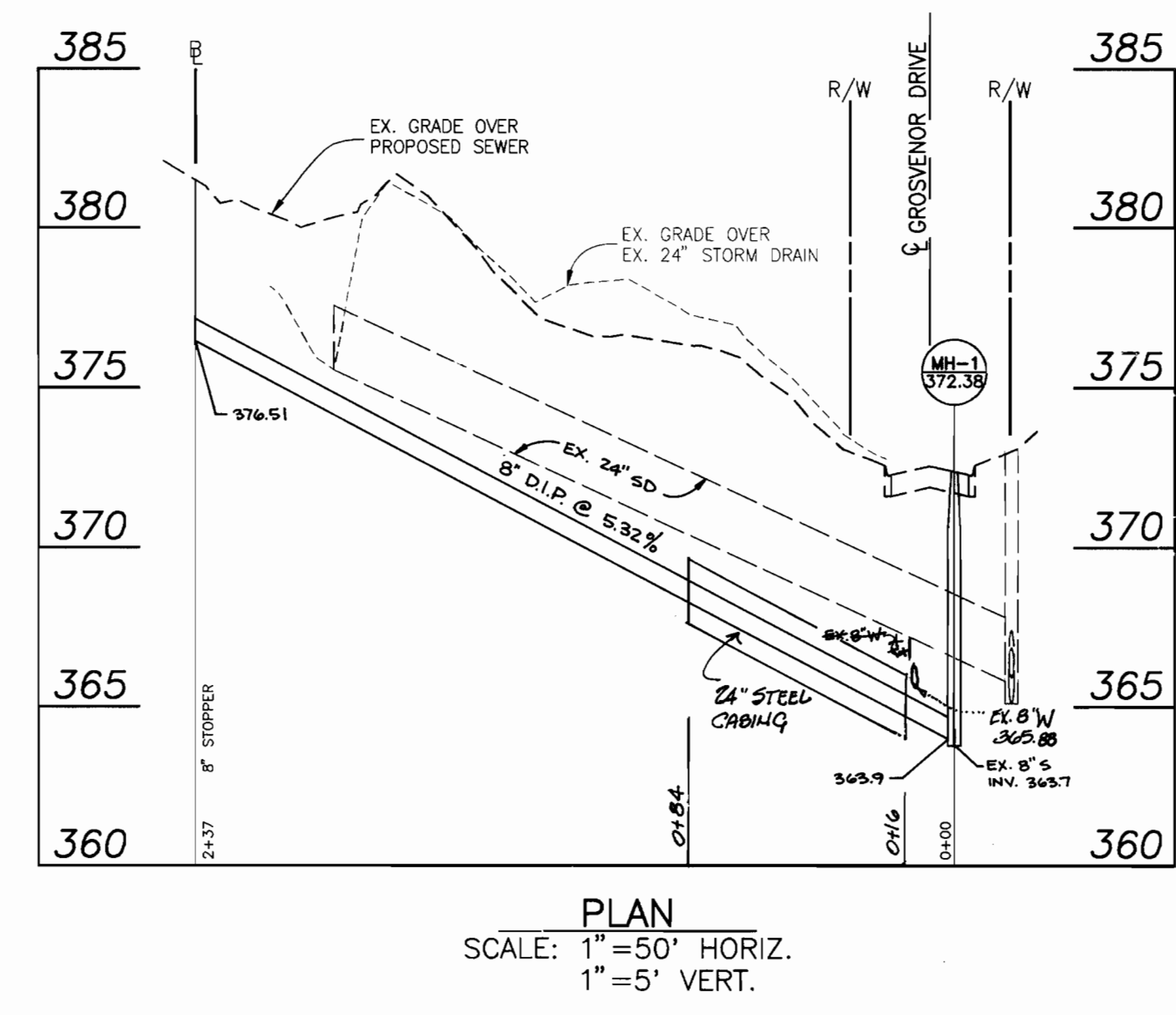
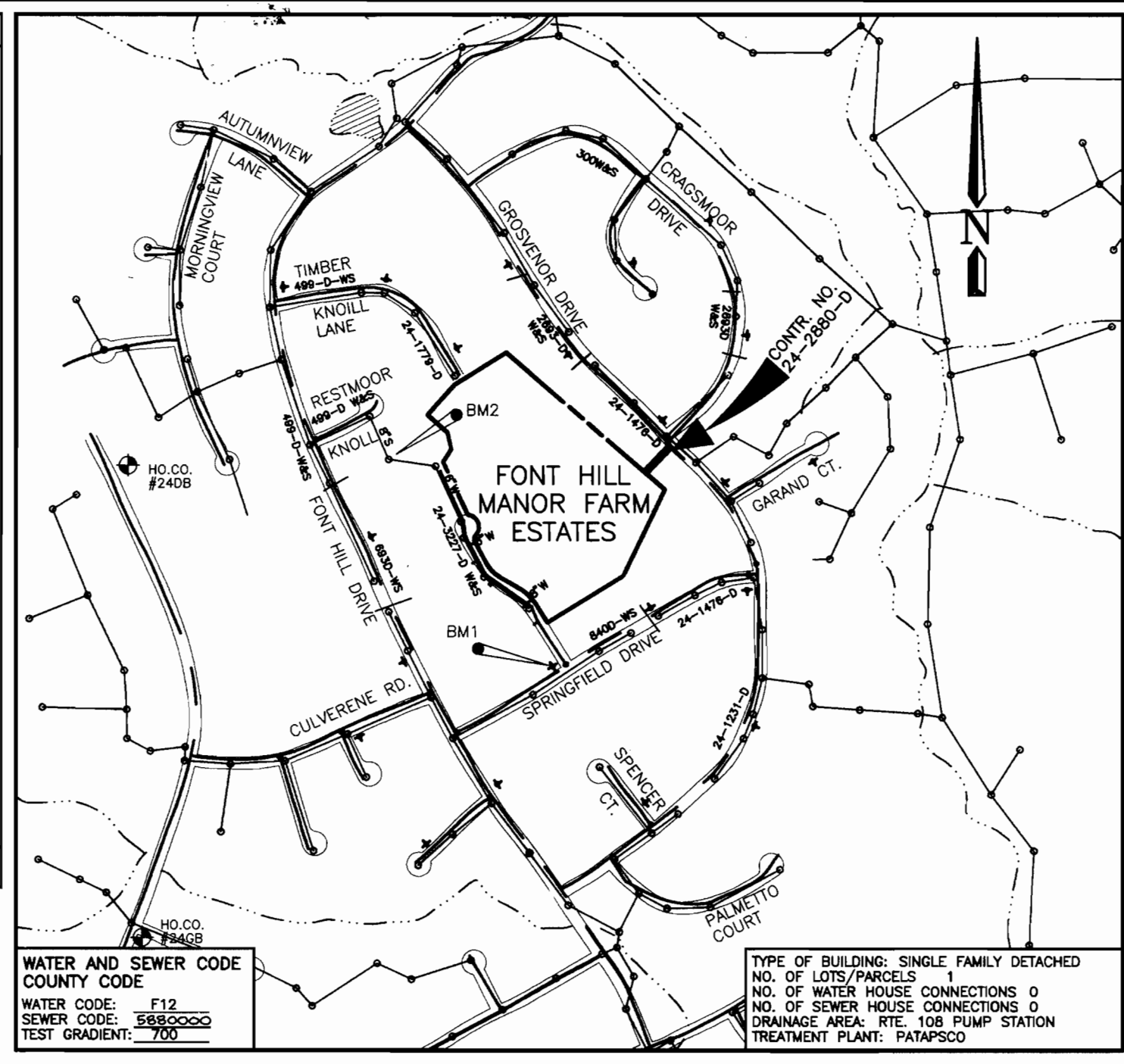
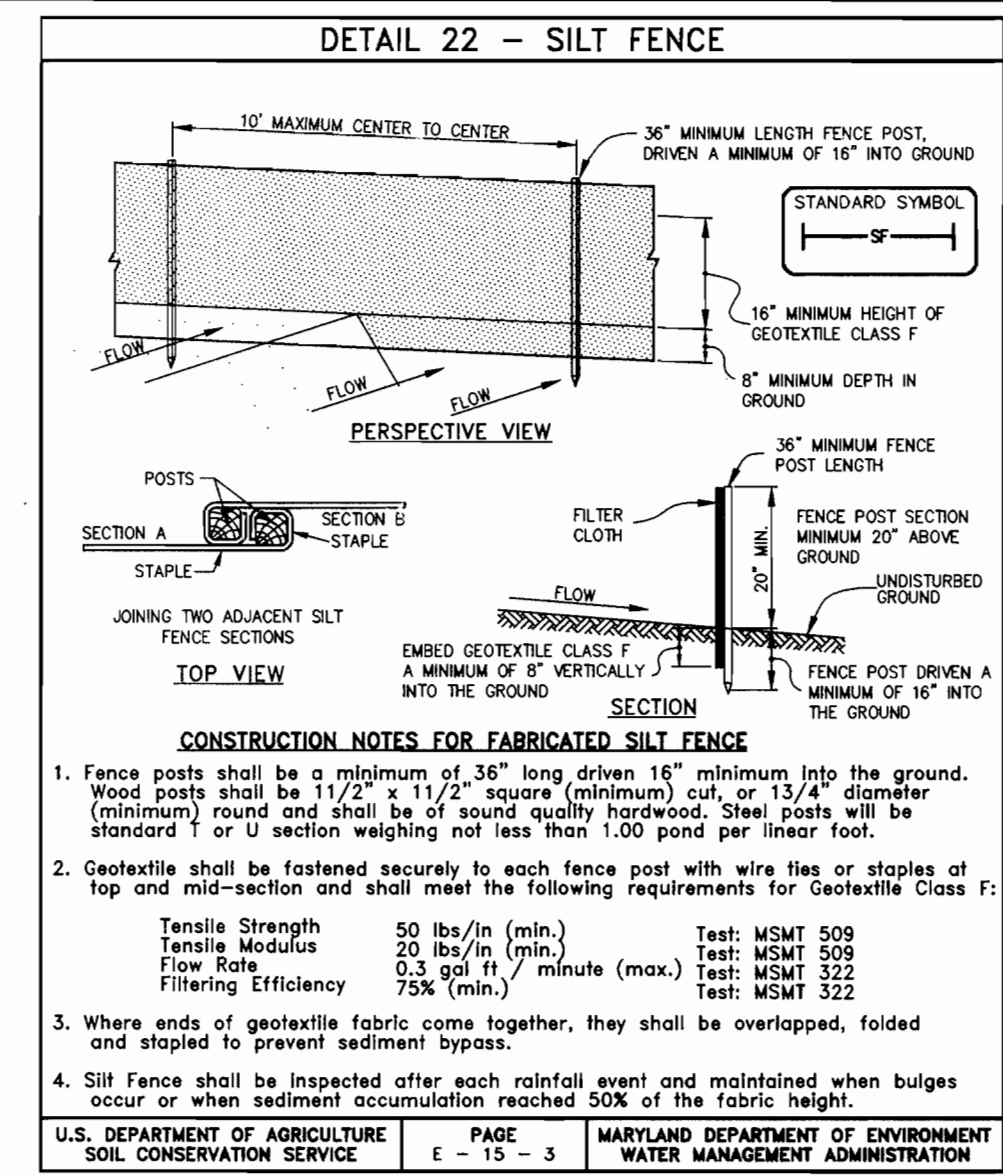
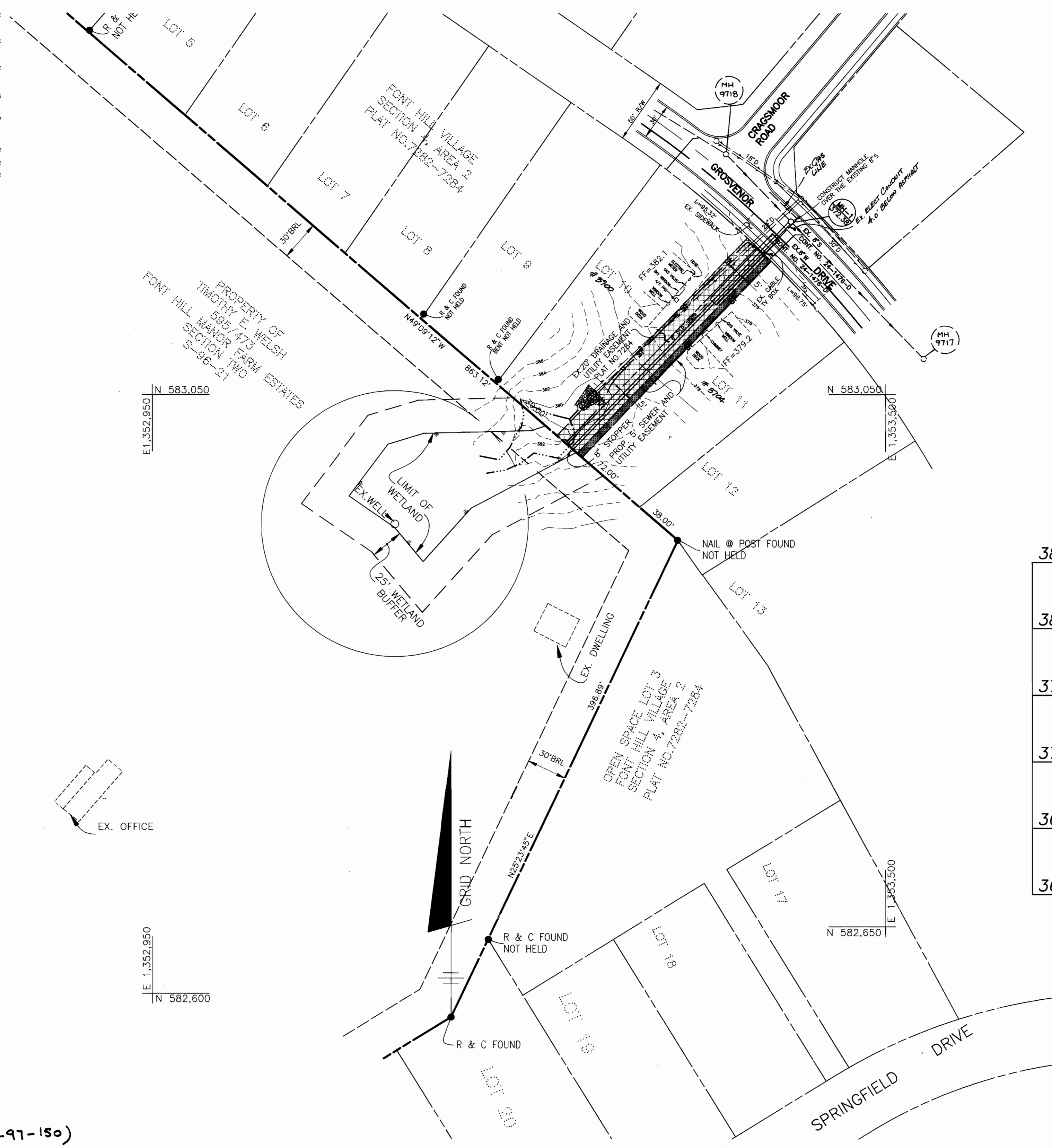


LEGEND



ITEMS	QUAN.	TYPE	MANUFACTURE SUPPLIER
8" D.I.P. SAIL	237'	CL-52	U.S. PIPE & FOUNDRY
24" STEEL CHAIN	68'	ASTM-A 199 GR-2	BALTIMORE PIPE, INC.
MANHOLE	1 EA	PRECAST	ATLANTIC CONCRETE PRODUCTS

NAME OF UTILITY CONTRACTOR: W.F. WILSON & SONS, INC.



- PART 1 - GENERAL**
- APPROXIMATE LOCATION OF EXISTING MAINS ARE SHOWN. THE CONTRACTOR SHALL TAKE ALL NECESSARY PRECAUTIONS TO PROTECT EXISTING MAINS AND SERVICES AND MAINTAIN UNINTERRUPTED SUPPLY. ANY DAMAGE INCURRED SHALL BE REPAIRED IMMEDIATELY TO THE SATISFACTION OF THE ENGINEER AT THE CONTRACTOR'S EXPENSE.
 - ALL HORIZONTAL CONTROLS ARE BASED ON MARYLAND STATE COORDINATES.
 - ALL VERTICAL CONTROLS ARE BASED ON U.S.G.S. DATA.
 - ALL PIPE ELEVATIONS SHOWN ARE (C) INVERT ELEVATIONS.
 - CLEAR ALL UTILITIES BY A MINIMUM OF 6" CLEAR ALL POLES BY 2'-0" MINIMUM OR TUNNEL AS REQUIRED. THE OWNER HAS CONTACTED THE UTILITY COMPANIES AND HAS MADE ARRANGEMENTS FOR BRACING OF POLES AS SHOWN ON THE DRAWINGS. IN THE EVENT THE CONTRACTOR'S WORK REQUIRES THE BRACING OF ADDITIONAL POLES, ANY COST INCURRED BY THE OWNER FOR BRACING OF ADDITIONAL POLES OR DAMAGES SHALL BE DEDUCTED FROM MONEY OWED THE CONTRACTOR. THE CONTRACTOR SHALL COORDINATE WITH THE UTILITY COMPANIES TO SCHEDULE THE BRACING OF THE POLES.
 - FOR DETAILS NOT SHOWN ON THE DRAWINGS, AND FOR MATERIALS AND CONSTRUCTION METHODS USE HOWARD COUNTY DESIGN MANUAL VOLUME IV, STANDARD SPECIFICATIONS AND DETAIL FOR CONSTRUCTION (LATEST EDITION). THE CONTRACTOR SHALL HAVE A COPY OF VOLUME IV ON THE JOB.
 - WHERE TEST PITS HAVE BEEN MADE ON EXISTING UTILITIES, THEY ARE NOTED BY THE SYMBOL AT THE LOCATION OF THE TEST PIT. A NOTE OR NOTES CONTAINING THE RESULTS OF THE TEST PIT OR PITS IS INCLUDED ON THE DRAWINGS. EXISTING UTILITIES IN THE VICINITY OF THE PROPOSED WORK FOR WHICH TEST PITS HAVE NOT BEEN DUG SHALL BE LOCATED BY THE CONTRACTOR TWO WEEKS IN ADVANCE OF CONSTRUCTION OPERATIONS AT HIS OWN EXPENSE.
 - CONTRACTOR SHALL NOTIFY THE FOLLOWING UTILITY COMPANIES OR AGENCIES AT LEAST FIVE WORKING DAYS BEFORE STARTING WORK SHOWN ON THESE PLANS:

STATE HIGHWAY ADMINISTRATION.....	531-5533
BALTIMORE GAS & ELECTRIC CO.....	850-4620
BALTIMORE GAS & ELECTRIC CO.....	850-4620
UNDERGROUND DAMAGE CONTROL.....	787-9068
MISS UTILITY.....	1-800-257-7777
COLONIAL PIPELINE CO.....	795-1390
HOWARD CO. DEPT. OF PUBLIC WORKS.....	313-4900
BUREAU OF UTILITIES.....	313-4900
 - TREES AND SHRUBS ARE TO BE PROTECTED FROM DAMAGE TO MAXIMUM EXTENT. TREES AND SHRUBS LOCATED WITHIN THE CONSTRUCTION STRIP ARE NOT TO BE REMOVED OR DAMAGED BY THE CONTRACTOR. CONTRACTOR SHALL REMOVE TREES, STUMPS AND ROOTS ALONG LINE OF EXCAVATION. PAYMENT FOR SUCH REMOVAL SHALL BE INCLUDED IN THE UNIT PRICE BID FOR CONSTRUCTION OF THE MAIN.
 - PLACE REGULATION "MEN WORKING" AND WARNING SIGNS AS REQUIRED TO COMPLY WITH MARYLAND STATE HIGHWAY ADMINISTRATION MANUAL OF TRAFFIC CONTROL FOR HIGHWAY MAINTENANCE OPERATIONS.
 - THE CONTRACTOR SHALL NOTIFY THE BUREAU OF HIGHWAYS, HOWARD COUNTY, AT (410) 313-2450 AT LEAST FIVE WORKING DAYS BEFORE ANY CUTOFF OF ANY COUNTY ROAD OR BORING/JACKING OPERATION IN COUNTY ROADS FOR LAYING WATER/SEWER MAINS OR HOUSE CONNECTIONS. THE APPROVAL OF THESE DRAWINGS WILL CONSTITUTE COMPLIANCE WITH DPW REQUIREMENTS PER SECTION 18.114(g) OF THE HOWARD COUNTY CODE.

NOTE:
THIS CONSTRUCTION PLAN FOR EXTENSION OF SEWER MAIN CONTRACT NO. 20-3280-D SUPERCEDES THE ORIGINAL CONSTRUCTION PLANS APPROVED AND SIGNED BY THE DIRECTOR OF THE DEPARTMENT OF PUBLIC WORKS ON 11-2-93.

HOWARD SOIL CONSERVATION DISTRICT:
REVIEWED FOR HOWARD SOIL CONSERVATION DISTRICT AND MEETS TECHNICAL REQUIREMENTS

Cheryl Simmons 5/13/97
U.S. SOIL CONSERVATION SERVICE DATE

THIS PLAN IS APPROVED FOR SOIL EROSION AND SEDIMENT CONTROL BY THE HOWARD SOIL CONSERVATION DISTRICT.

John R. Roberts 5/13/97
HOWARD SOIL CONSERVATION DISTRICT DATE

SEDIMENT CONTROL MEASURES FOR THIS CONTRACT WILL BE IMPLEMENTED IN ACCORDANCE WITH SECTION 219 OF THE HOWARD COUNTY STANDARD SPECIFICATIONS.

(F-97-150)

QUANTITIES			
ITEMS	QUANTITIES ESTIMATED	AS-BUILT	
		QUANTITIES	TYPE MANUF./SUPPLIER
8" SEWER MANHOLE	237 LF		
NAME OF UTILITY CONTRACTOR:			
SURVEY AND DRAFTING DIVISION AS-BUILT DATE:			

DEPARTMENT OF PUBLIC WORKS
HOWARD COUNTY, MARYLAND

Robert Benjamin 5-8-97
CHIEF, BUREAU OF UTILITIES DATE

DEPARTMENT OF PLANNING AND ZONING
HOWARD COUNTY, MARYLAND

Donald Mason 5/16/97
CHIEF, DEVELOPMENT ENGINEERING DIVISION DATE

TSA GROUP, INC.
planning • architecture • engineering • surveying
8480 Baltimore National Pike Suite 418
Ellicott City, Maryland 21043

Donald Mason

DES: DAM			
DRN: MBB			
CHK: DAM			
DATE: 12/12/12	KRI 1	AS-BUILT CONDITIONS ADDED TO PLAN	10/14/99

NO.	REVISIONS	DATE
1	AS-BUILT CONDITIONS ADDED TO PLAN	10/14/99

PLAN AND PROFILE OF A SEWER MAIN

600 SCALE MAP NO. 24 BLOCK 8 & 14

FONT HILL MANOR FARM ESTATES
SECTION 2
ELECTION DISTRICT NO. 2

CONTRACT NO. 20-3280-D

SCALE AS SHOWN
SHEET 1 OF 1

Font Hill Manor Farm Estates
WS/1
3260