

TYPE OF BUILDING	TOWNHOUSES
NO. OF LOTS	56
NO. OF WHC'S	56
NO. OF SHC'S	64
DRAINAGE AREA	MIDDLE PATUXENT

LITTLE PATUXENT W.W.T.P.

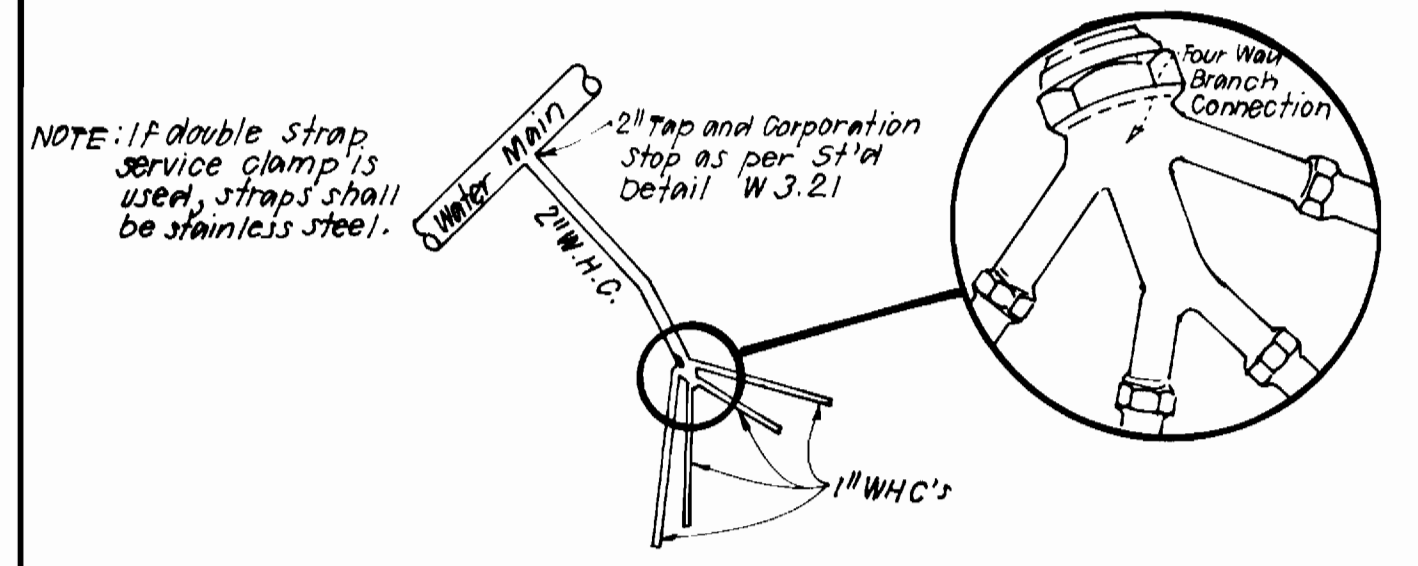
LOT NO.	INV AT P.L.	MIN. CELLAR ELEV.	LOT NO.	INV AT P.L.	MIN. CELLAR ELEV.
M-2	416.8	420.0	M-34	416.1	419.4
M-3	416.7	419.9	M-35	416.9	420.1
M-4	416.0	419.2	M-36	418.9	422.2
M-5	415.9	419.1	M-37	418.6	422.8
M-6 DHC	419.4	422.6	M-38	420.9	424.2
M-7 DHC	419.4	422.6	M-39	422.0	425.3
M-8 DHC	420.4	423.6	M-40	422.5	425.9
M-9 DHC	420.4	423.6	M-41	424.1	427.4
M-10 DHC	420.4	423.6	M-42	421.8	424.9
M-11	424.4	427.6	M-43	421.6	424.7
M-12	423.6	426.8	M-44	418.5	421.6
M-13	422.7	425.9	M-45	418.3	421.4
M-14	421.4	424.6	M-46	418.2	421.3
M-15	420.5	423.7	M-47	418.4	421.6
M-16	419.1	422.3	M-48	418.9	422.0
M-17	418.4	421.6	M-49	418.1	422.7
M-18	412.9	416.0	M-50	418.4	421.4
M-19	412.2	415.3	M-51	416.6	418.8
M-20	411.3	414.4	M-52	415.4	418.61
M-21	410.5	413.7	M-53	414.1	417.3
M-22	410.2	413.3	M-54	412.8	416.0
M-23	409.1	412.1	M-55	411.2	414.4
M-24	408.3	411.3	M-56	410.0	413.2
M-25	408.8	412.0	M-57	408.6	411.8
M-26	408.5	411.7	M-60 (FUT)	407.00	410.1
M-27	408.4	411.6	M-61 (FUT)	407.1	410.3
M-28	408.3	411.4	M-62 (FUT)	407.3	410.5
M-29	408.5	411.7	M-63 (FUT)	407.6	410.8
M-30	410.2	413.4	M-64 (FUT)	407.5	410.7
M-31	411.4	414.7	M-65 (FUT)	408.0	411.2
M-32	413.5	416.9	M-66 (FUT)	407.8	411.0
M-33	415.4	418.7	M-67 (FUT)	408.1	411.3

\* NO CELLAR SERVICE (NO BASEMENTS IN DEVELOPMENT)

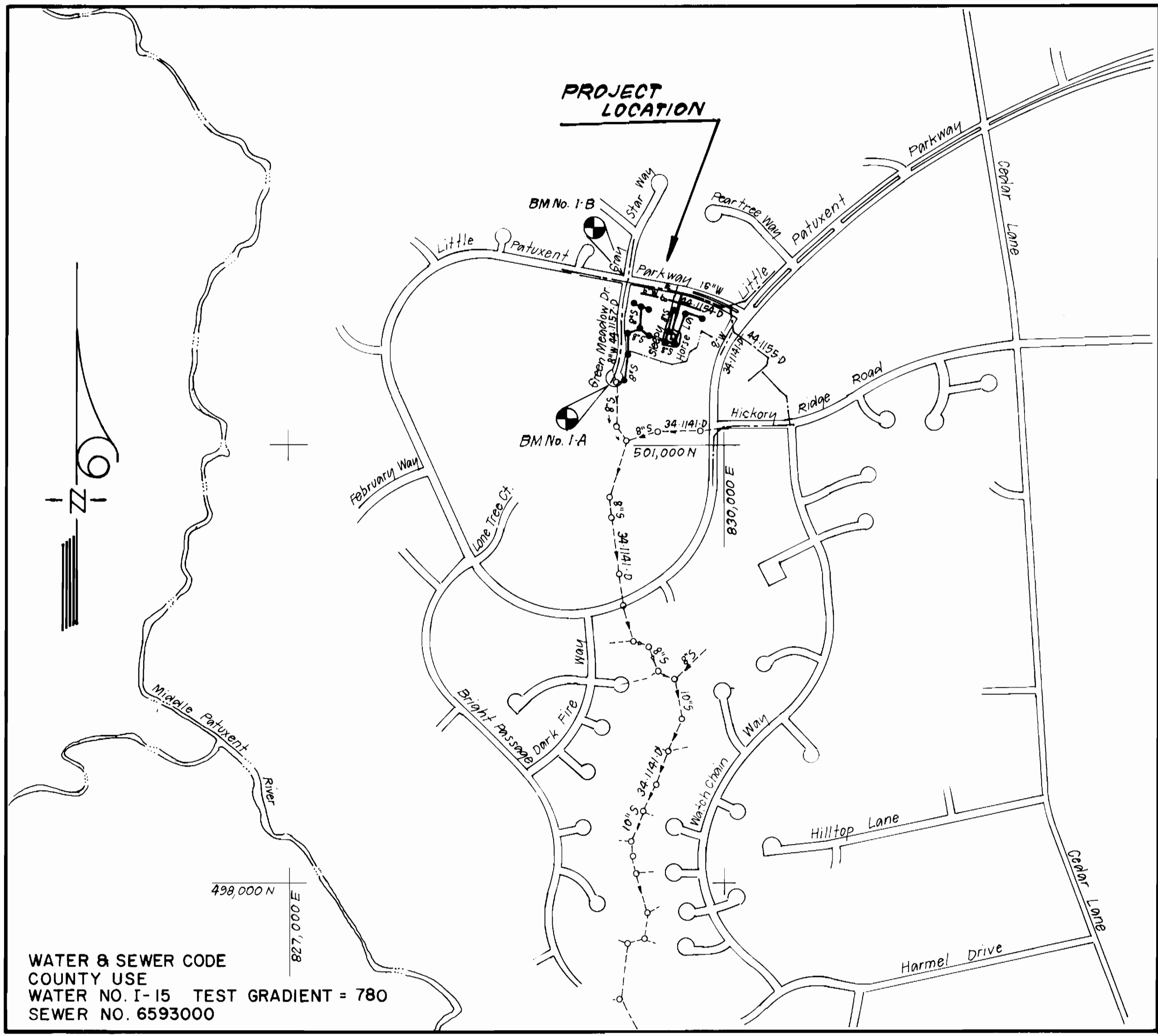
**BENCH MARKS**

BM No. I-A ELEV. = 406.30  
 Square Cut in top of inlet at rear of Cui-De-Sac, Green Meadow Drive.

BM No. I-B ELEV. = 420.94  
 Square Cut in top of inlet slab at N.W. intersection of Little Patuxent Parkway and Green Meadow Drive. (SEE VICINITY MAP)



**4-WAY W.H.C. DETAIL**  
 For Lot M-18 thru M-22, M-50 thru M-53 and M-54 thru M-57 AND M-2 thru M-5



**VICINITY MAP**  
 SCALE: 1" = 600'

**CONTRACT NO.34-3269-D**  
**VILLAGE OF HICKORY RIDGE**  
**SECTION 3 AREA 4, LOTS M-2 THRU M-59**  
**HOWARD COUNTY, MARYLAND**  
**DEPARTMENT OF PUBLIC WORKS**

- GENERAL NOTES**
- Approximate location of existing mains are shown. The contractor shall take all necessary precautions to protect existing mains and services and maintain uninterrupted supply. Any damage incurred shall be repaired immediately to the satisfaction of the Inspector, at the contractor's expense.
  - All horizontal controls are based on Maryland State Coordinates.
  - All vertical controls are based on U.S.G.S. Datum.
  - All pipe elevations shown are invert elevations.
  - Clear all utilities by a minimum of 6" clear all poles by 2'-0" minimum or tunnel as required. Any cost incurred to the contractor for tunneling or bracing at poles shall be included in unit prices bid for excavation and backfill.
  - For details not shown on the drawings use Howard County Standard Details.
  - For materials and construction methods use Howard County Standard Specifications and Howard County Design Manual, Volume IV 1989 Amendments. The Contractor shall have copy of same on the job site.
  - Contractor shall locate existing utilities a minimum of two (2) weeks in advance of construction operations in the vicinity of proposed utilities at his own expense.
  - Contractor shall notify the following utilities or agencies at least five (5) working days before starting work shown on these plans.
    - State Highway Administration - 531-5533
    - Baltimore Gas & Electric Company - Underground Damage Control - 787-9068
    - Baltimore Gas & Electric Company - Contractor Services - 850-4620
    - Baltimore Gas & Electric Company - Trouble Shooting - 298-9001
    - "Miss Utility" - 1-800-257-7777
    - Chesapeake & Potomac (C & P) Telephone Company - 1-800-257-7777
    - Bureau of Utilities Howard County - 313-4900
    - Colonial Pipeline Company - 795-1390
  - Trees are to be protected from damage to maximum extent. Trees located within the construction strip are not to be removed or damaged by the contractor.
  - Contractor shall remove trees, stumps, and roots along line of excavation as directed by the Inspector. Payment for such removal shall be included in the unit price bid for excavation and backfill.
  - Place regulation "Men Working" and warning signs as required to comply with Maryland State Highway Administration Manual of Traffic Control for Highway Construction and Maintenance Operations.
  - All water mains to be D.I.P. Class 52 unless otherwise noted.
  - Top of all water mains to have a minimum of 3'-1/2' cover unless otherwise noted.
  - Valves adjacent to tees shall be strapped to tees.
  - Block all fittings with concrete.
  - Bury line elevations on fire hydrants shall be set to the elevations shown on the drawings. All fire hydrants shall be restrained and buttressed with concrete in accordance with S.D. Det. W.111 & W.2.11 Soil around the fire hydrant to be compacted in accordance with Sections 100D & 100E of the Standard Specifications.
  - All water house connections shall be for an inside meter setting.
  - The contractor shall not operate any water main valves on the existing system.
  - All sewer mains shall be C.S.P.X., V.C.P.X., P.V.C., or D.I.P. unless otherwise noted.
  - The contractor shall provide a joint in all sewer mains within 2'-0" of exterior manhole wall.
  - All manholes shall be 4'-0" inside diameter, unless otherwise noted.
  - Water main and water house connection lines must have a minimum of one foot separation from the sanitary sewer and sewer house connections as they cross. Except at crossings, water and sewer lines shall have a minimum horizontal separation of 10'.
  - Manholes designated thus: WT, shall have a Watertight Frame and Cover.

ITEM	QUANTITIES ESTIMATED	AS BUILT		
		QUANTITIES	T.Y.P.E.	MANUFACTURER / SUPPLIER
8" SEWER	1,615 LF	1,615 LF	PVC	L.C.P. NATIONAL PIPE CO.
4" S.H.C.	1,235 LF	1,235 LF	PVC	"
8" VALVE	1 EA	1 EA	GATE	MUELLER CO.
8" WATER	509 LF	509 LF	D.I.P.	GRIFFIN PIPE
6" WATER	737 LF	737 LF	D.I.P.	"
2" W.H.C.	125 LF	125 LF	COPPER	HOWELL
1 1/2" W.H.C.	480 LF	480 LF	"	"
1" W.H.C.	800 LF	800 LF	"	"
4' I.D. MH	15 EA	15	PRECAST CONCRETE	ATLANTIC CONCRETE PRODUCTS
FIRE HYDRANT	2 EA	2	"	MUELLER
BLOW-OFF HYD	2 EA	2	"	ECLIPSE / KUPFERLE
DROP H.C.	5 EA	5	PVC	L.C.P. NATIONAL PIPE CO.
NAME OF UTILITY CONTRACTOR: W.F. WILSON				
4" VALVE	2 EA	2	SURVEY & DRAFTING DIV. AS BUILT DATE	
6" VALVE	6 EA	6	GATE	MUELLER (BOTH 4" & 6")

Sediment Control Measures will be implemented in accordance with Section 219 of the Specifications & with Road Construction Plan F 93-110 ; Drawing 5 , 6 Sediment & Erosion Control.

REVIEWED FOR HOWARD SOIL CONSERVATION DISTRICT AND MEETS TECHNICAL REQUIREMENT.  
 Signature: [Signature] DATE: 7/6/93  
 U.S. SOIL CONSERVATION SERVICE

This Development Plan is approved for Soil Erosion and Sediment Control by the Howard Soil Conservation District.

APPROVED:  
 Signature: [Signature] DATE: 7/6/93  
 HOWARD S.C.D.

DEPARTMENT OF PUBLIC WORKS  
 HOWARD COUNTY, MARYLAND

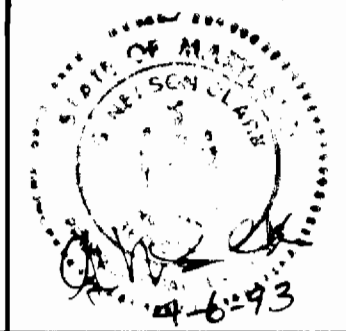
James M. [Signature] 7/8/93  
 DIRECTOR OF PUBLIC WORKS DATE

Robert [Signature] 6-29-93  
 CHIEF, BUREAU OF UTILITIES DATE

[Signature] 7/8/93  
 CHIEF, LAND DEVELOPMENT DIV. DATE

CLARK-FINEPROCK & SACKETT, INC.  
 ENGINEERS-PLANNERS-SURVEYORS

7135 MINSTREL WAY COLUMBIA MARYLAND 21045  
 (410) 381-7500 BALTO. (301) 621-8100 WASH.



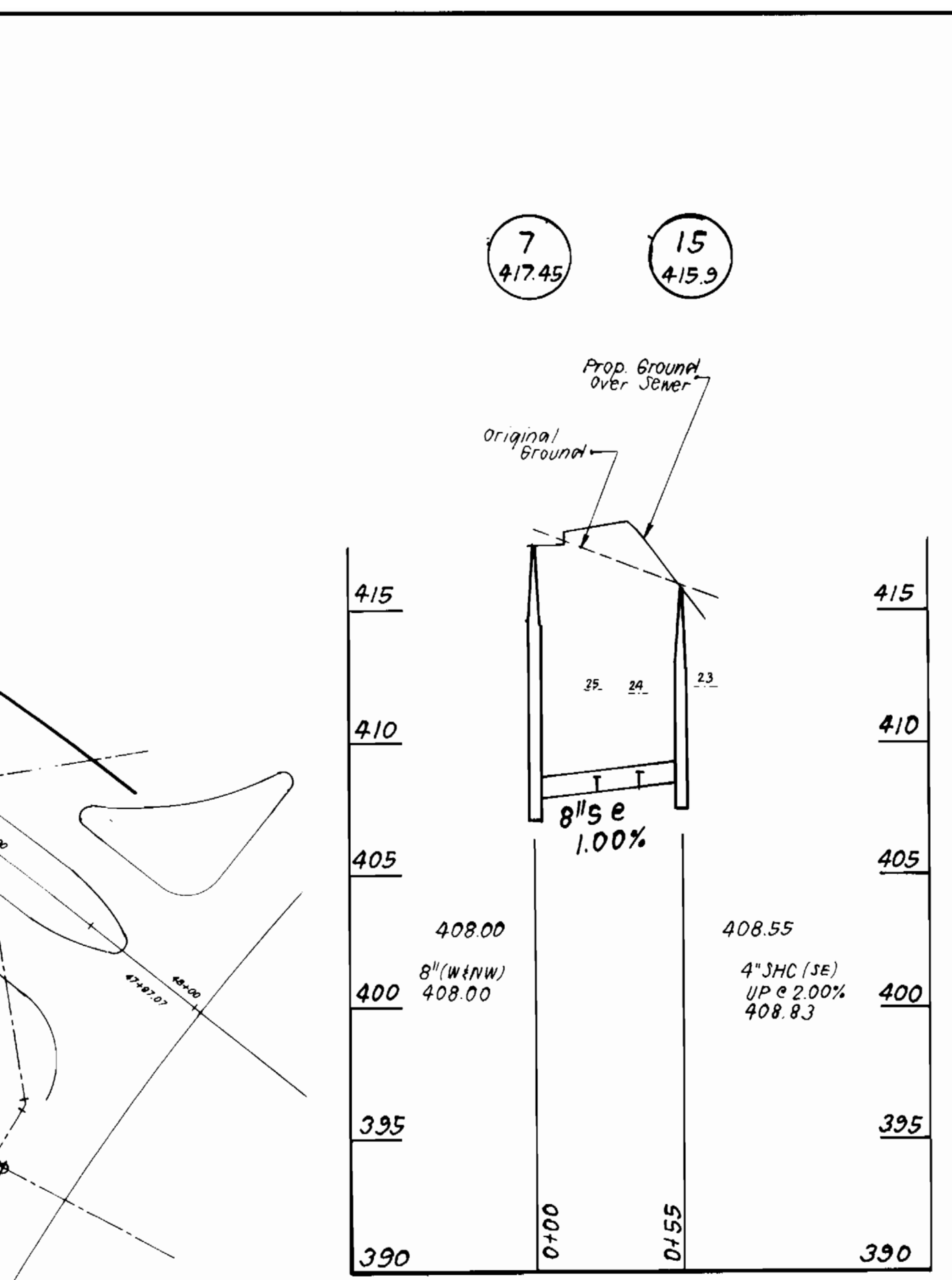
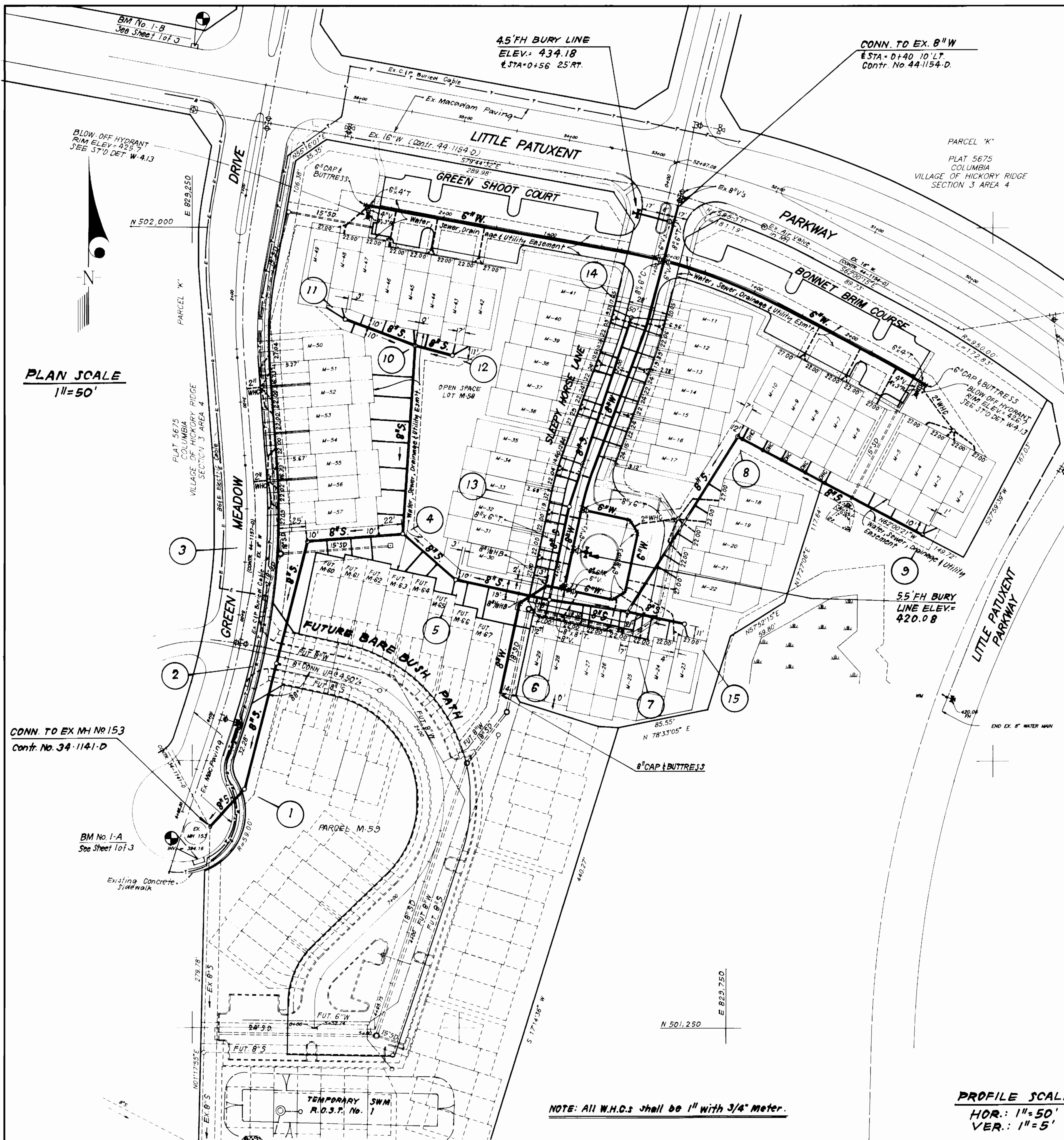
DES: JTR	DFI: 1	AS-BUILT SHEET	10-24-95
DRN: JTR			
CHK: CCM			
DATE: APR 93	BY: NO.	REVISION	DATE

TITLE SHEET

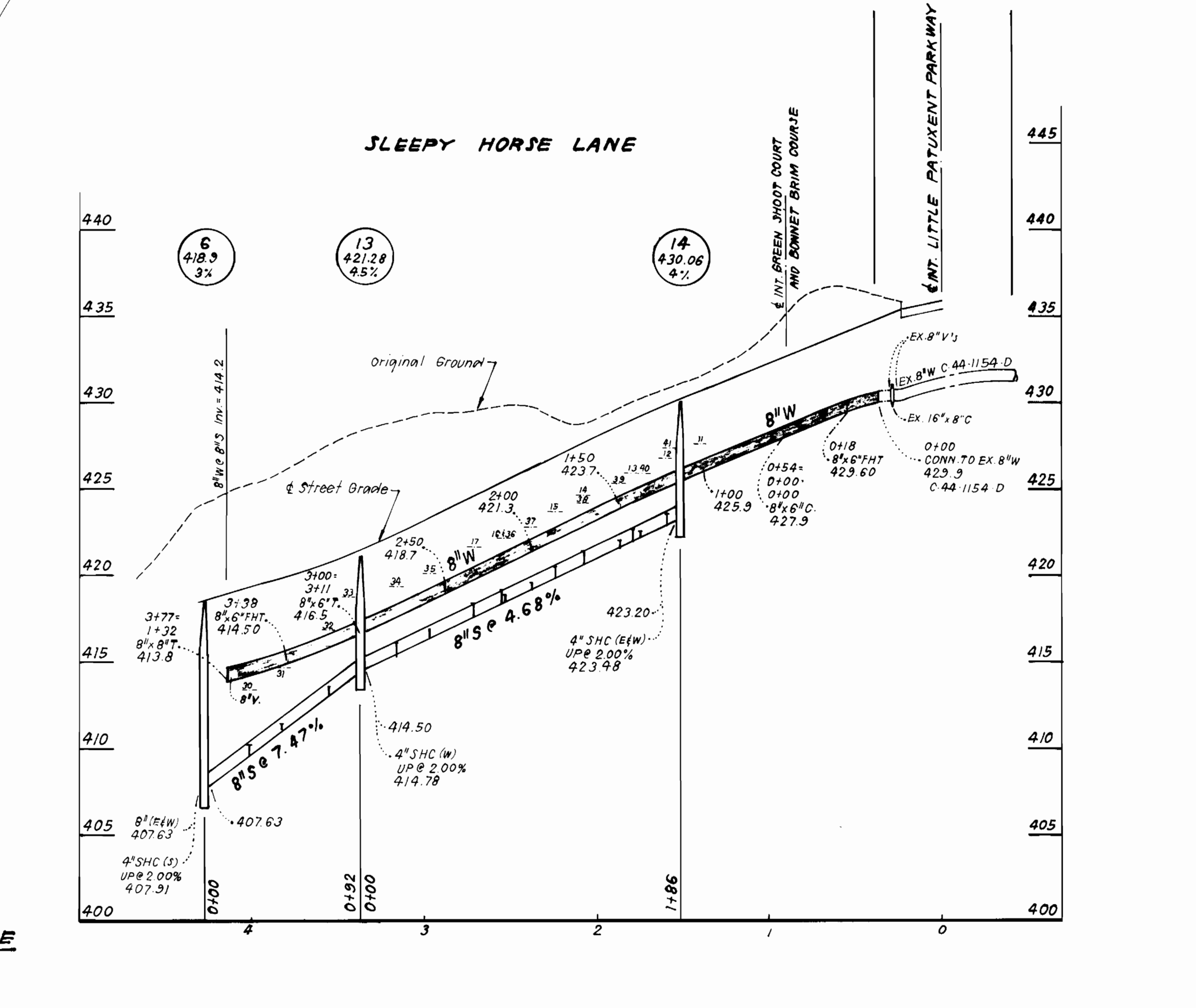
600' SCALE MAP NO. 35 BLOCK NO. 4

COLUMBIA, VILLAGE OF HICKORY RIDGE  
 SECTION 3 AREA 4, LOTS M-2 THRU M-59  
 5TH ELECTION DISTRICT  
 CONTRACT NO.34-3269-D

SCALE AS SHOWN  
 SHEET 1 OF 3



STAKEOUT TABLE			
STREET NAME	STA	OFFSET	REMARKS
SLEEPY HORSE LANE	0 + 40	10' LT	CONN TO EX 8" W
SLEEPY HORSE LANE	0 + 56	10' LT	8" X 6" F.H. TEE.
SLEEPY HORSE LANE	0 + 56	25' LT	FIRE HYDRANT
SLEEPY HORSE LANE	0 + 92	15' LT	8" X 6" CROSS
SLEEPY HORSE LANE	1 + 50	9' LT	8" WATER MAIN
SLEEPY HORSE LANE	2 + 00	7' LT	8" WATER MAIN
SLEEPY HORSE LANE	3 + 00	7' LT	8" WATER MAIN
SLEEPY HORSE LANE	3 + 38	6' LT	8" X 6" TEE.
SLEEPY HORSE LANE	3 + 77	6' LT	8" X 6" F.H.TEE.
SLEEPY HORSE LANE	3 + 77	18' LT	FIRE HYDRANT
SLEEPY HORSE LANE	4 + 14	6' RT	8" X 8" TEE.
SLEEPY HORSE LANE	4 + 60	6' RT	6" 1/8" H. BEND
SLEEPY HORSE LANE	4 + 74	0W E	6" 1/8" H. BEND
SLEEPY HORSE LANE	5 + 30	0W E	6" 1/8" H. BEND
SLEEPY HORSE LANE	5 + 43	8' RT	6" 1/8" H. BEND
SLEEPY HORSE LANE	1 + 52	7' RT	MANHOLE NO. 14
SLEEPY HORSE LANE	3 + 38	6' RT	MANHOLE NO. 13
GREEN SHOOT COURT	0 + 50	2' LT	6" WATER MAIN
"	1 + 00	2' LT	6" WATER MAIN
"	2 + 00	2' LT	6" WATER MAIN
"	2 + 70	2' LT	6" X 4" TEE.
"	2 + 70	11' LT	BLOW-OFF HYDRANT
"	2 + 75	2' LT	6" CAP.
BONNET BRIM COURSE	0 + 50	2' RT	6" WATER MAIN
"	1 + 00	2' RT	6" WATER MAIN
"	2 + 00	2' RT	6" WATER MAIN
"	2 + 79	2' RT	6" X 4" TEE.
"	2 + 79	11' RT	BLOW-OFF HYDRANT
"	2 + 84	2' RT	6" CAP.



DEPARTMENT OF PUBLIC WORKS  
 HOWARD COUNTY, MARYLAND

James M. [Signature] 7/8/93  
 DIRECTOR OF PUBLIC WORKS DATE

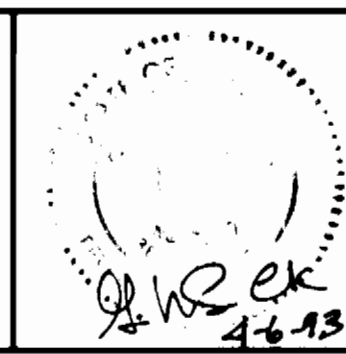
Robert N. [Signature] 6-29-93  
 CHIEF, BUREAU OF UTILITIES DATE

Paul [Signature] 7/8/93  
 CHIEF, BUREAU OF ENGINEERING DATE

John [Signature] 7/8/93  
 CHIEF, LAND DEVELOPMENT DIV. DATE

**CFS** CLARK - FINEPROCK & SACKETT, INC.  
 ENGINEERS - PLANNERS - SURVEYORS

7155 MINSTREL WAY COLUMBIA MARYLAND 21045  
 (410) 381-7500 BALTO. (301) 621-8100 WASH.



DES: JTR  
 DRN: JTR  
 CHK: CCM  
 DATE: APR 93

BY: NO. REVISION DATE

PLAN & PROFILES OF  
 WATER & SEWER MAINS

600' SCALE MAP NO. 35 BLOCK NO. 4

COLUMBIA, VILLAGE OF HICKORY RIDGE  
 SECTION 3 AREA 4, LOTS M-2 THRU M-59  
 5 TH ELECTION DISTRICT  
 CONTRACT NO. 34-3269-D

SCALE AS SHOWN  
 SHEET 2 OF 3



LOT M-2 SEWER 17.3' TO MH-9  
30.3' TO S.E. CORNER M-2  
22.5' TO S.E. CORNER M-3  
WATER 22.6' TO N.E. CORNER M-2  
16.2' TO N.W. CORNER M-2  
21.6' TO WHC M-3

LOT M-3 SEWER 12.3' TO MH-9  
25.3' TO S.E. CORNER M-3  
30.0' TO S.W. CORNER M-3  
WATER 61.0' TO 4" V @ BLOW-OFF  
23.0' TO N.W. CORNER M-2  
9.2' TO WHC M-4

LOT M-4 SEWER 39.0' TO MH-9  
29.2' TO S.W. CORNER M-3  
WATER 50.0' TO 6" BLOW-OFF  
31.0' TO N.W. CORNER M-2

LOT M-5 SEWER 62.6' TO MH-9  
18.2' TO S.W. CORNER M-5  
WATER 34.0' TO 6" BLOW-OFF  
33.0' S. CORNER INLET FACE OF CURB  
25.4' TO N.W. CORNER M-5

LOT M-6 SEWER 29.0' TO S.E. CORNER M-6  
34.0' TO S.E. CORNER M-6  
WATER 8.1' TO FACE OF CURB  
22.3' TO S.W. CORNER OF INLET  
16.2' TO N.E. CORNER M-6

LOT M-7 SEWER 36.6' TO S.E. CORNER M-6  
25.0' TO S.E. CORNER M-8  
WATER 6.4' TO FACE OF CURB  
6.6' TO S.W. CORNER ISLAND CURB  
13.6' TO S.E. CORNER ISLAND CURB

LOT M-8 SEWER 47.0' TO MH-8  
28.0' TO S.E. CORNER M-8  
35.0' TO S.W. CORNER M-9  
WATER 6.2' TO FACE OF CURB  
8.0' TO S.W. CORNER ISLAND CURB  
17.4' TO S.E. CORNER ISLAND CURB

LOT M-9 SEWER 36.3' TO MH-8  
25.3' TO S.W. CORNER M-9  
WATER 7.8' TO FACE CURB  
19.6' TO N.E. CORNER M-10

LOT M-10 SEWER 13.3' TO MH-8  
23.6' TO S.E. CORNER M-9 & M-10  
WATER 7.3' TO FACE OF CURB  
26.5' TO N.W. CORNER M-10  
42.2' TO WEST CORNER CURB

LOT M-11 SEWER 11.0' TO REAR OF CURB  
33.0' TO MH-14  
54.6' TO 6" VALVE FOR BONNET BRIM  
WATER 10.6' TO REAR OF CURB  
32.5' TO MH-14  
57.2' TO 6" V

LOT M-12 SEWER 11.6' TO REAR OF CURB  
36.4' TO MH-14  
74.6' TO 6" V  
WATER 10.3' TO REAR OF CURB  
32.2' TO MH-14  
41.3' TO 6" V

LOT M-13 SEWER 11.0' TO REAR OF CURB  
44.0' TO MH-14  
16.0' TO SHC M-12  
WATER 10.8' TO REAR OF CURB  
52.0' TO MH-14  
11.0' TO SHC M-13

LOT M-14 SEWER 11.3' TO REAR OF CURB  
61.3' TO MH-14  
7.3' TO WHC M-12  
WATER 10.7' TO REAR OF CURB  
55.0' TO MH-14  
4.0' TO WHC M-13

LOT M-15 SEWER 11.5' TO REAR OF CURB  
83.4' TO MH-14  
26.0' TO SHC M-14  
WATER 10.4' TO REAR OF CURB  
8.5' TO WHC M-15  
5.2' TO WHC M-16

LOT M-16 SEWER 11.4' TO REAR OF CURB  
88.0' TO MH-13  
14.0' TO WHC M-16  
WATER 10.5' TO REAR OF CURB  
5.2' TO WHC M-15  
14.0' TO SHC M-14

LOT M-17 SEWER 11.6' TO REAR OF CURB  
74.0' TO MH-13  
15.0' TO SHC M-16  
WATER 9.6' TO REAR OF CURB  
54.0' TO 6" VALVE  
61.0' TO MH-13

LOT M-18 SEWER 54.5' TO MH-8  
53.0' TO N.E. CORNER OF CURB  
67.7' TO N. CORNER OF CURB  
WATER 45.7' TO N.E. CORNER OF CURB  
55.0' TO N. CORNER OF CURB

LOT M-19 SEWER 32.6' TO N.E. CORNER OF CURB  
46.5' TO N. CORNER OF CURB  
WATER 29.3' TO N.E. CORNER OF CURB  
48.0' TO N. CORNER OF CURB

LOT M-20 SEWER 44.3' TO N. CORNER OF CURB  
21.0' TO N.E. CORNER OF CURB  
6.0' TO SHC M-20  
WATER 20.4' TO WHC M-21  
23.7' TO N.E. CORNER OF CURB  
21.8' TO BEHIND FACE OF CURB

LOT M-21 SEWER 56.3' TO S.E. CORNER OF CURB  
34.2' TO N.E. CORNER OF CURB  
13.2' TO BEHIND FACE OF CURB  
WATER 63.3' TO S.E. CORNER OF CURB  
31.6' TO N.E. CORNER OF CURB  
13.0' TO BEHIND FACE OF CURB

LOT M-22 SEWER 42.9' TO S.E. CORNER OF CURB  
51.5' TO N.E. CORNER OF CURB  
13.8' TO BEHIND FACE OF CURB  
WATER 31.0' TO S.E. CORNER OF CURB  
32.0' TO MH-15  
12.2' TO BEHIND FACE OF CURB

LOT M-23 SEWER 38.5' TO S.E. CORNER OF CURB  
14.5' TO MH-15  
WATER 30.1' TO S.E. CORNER OF CURB  
13.6' TO MH-15

LOT M-24 SEWER 25.8' TO S.E. CORNER OF CURB  
24.5' TO MH-15  
WATER 29.3' TO S.E. CORNER OF CURB  
22.0' TO MH-15

LOT M-25 SEWER 20.5' TO E. CORNER OF INLET  
36.0' TO MH-7  
WATER 12.0' TO E. CORNER OF INLET  
29.0' TO MH-7

LOT M-26 SEWER 8.7' TO E. CORNER OF INLET  
25.0' TO MH-7  
WATER 12.8' TO E. CORNER OF INLET  
27.0' TO MH-7

LOT M-27 SEWER 7.2' BEHIND FACE OF CURB  
44.0' TO MH-6  
42.0' TO MH-7  
WATER 8.0' BEHIND CURB  
16.0' TO W. CORNER OF INLET  
29.5' TO MH-7

LOT M-28 SEWER 7.8' BEHIND FACE OF CURB  
28.0' TO MH-6  
50.5' TO S.D. MH  
WATER 8.8' BEHIND FACE OF CURB  
28.6' TO MH-6  
38.0' TO S.D. MH

LOT M-29 SEWER 7.2' BEHIND FACE OF CURB  
19.0' TO MH-6  
19.0' TO S.D. MANHOLE  
WATER 7.5' BEHIND FACE OF CURB  
24.0' TO MH-6  
32.3' TO S.D. MH

LOT M-30 SEWER 36.2' TO 8" V  
36.6' TO MH-6  
WATER 37.2' TO 8" V  
41.0' TO MH-6

LOT M-31 SEWER 43.3' TO 8" V  
34.0' TO 6" FH VALVE  
WATER 37.8' TO 8" V  
34.4' TO 6" FH VALVE

LOT M-32 SEWER 41.0' TO 6" V TO CUL-D-SAC  
39.0' TO 6" FH VALVE  
30.3' TO MH-13  
WATER 41.3' TO 6" FH VALVE  
7.0' TO REAR OF CURB  
25.0' TO MH-13

LOT M-33 SEWER 21.0' TO MH-13  
51.2' TO 6" FH VALVE  
10.3' TO REAR OF CURB  
WATER 21.6' TO MH-13  
46.0' TO 6" FH VALVE  
9.7' TO REAR CURB

LOT M-34 SEWER 33.2' TO MH-13  
41.3' TO 6" VALVE TO CUL-D-SAC  
10.9' TO REAR OF CURB  
WATER 26.0' TO MH-13  
44.4' TO 6" V TO CUL-D-SAC  
9.0' TO REAR OF CURB

LOT M-35 SEWER 49.0' TO MH-13  
65.0' TO 6" V TO CUL-D-SAC  
11.6' TO REAR OF CURB  
WATER 41.4' TO MH-13  
48.2' TO 6" V TO CUL-D-SAC  
9.5' TO REAR OF CURB

LOT M-36 SEWER 11.0' TO REAR OF CURB  
88.6' TO 6" V TO CUL-D-SAC  
86.6' TO MH-13  
WATER 9.2' TO REAR OF CURB  
43.4' TO 6" V TO CUL-D-SAC  
92.0' TO MH-13

LOT M-37 SEWER 10.3' TO REAR OF CURB  
5.2' TO WHC M-37  
29.5' TO SHC M-38  
WATER 9.8' TO REAR OF CURB  
5.2' TO WHC M-36

LOT M-38 SEWER 9.4' TO REAR OF CURB  
60.5' TO MH-14  
25.5' TO SHC M-37  
WATER 9.7' TO REAR OF CURB  
55.0' TO MH-14  
5.8' TO SHC M-38

LOT M-39 SEWER 10.9' TO REAR OF CURB  
45.0' TO MH-14  
6.0' TO WHC M-39  
WATER 10.4' TO REAR OF CURB  
50.2' TO MH-14

LOT M-40 SEWER 11.8' TO REAR OF CURB  
23.0' TO MH-14  
19.4' TO WHC M-40  
WATER 10.4' TO REAR OF CURB  
20.0' TO MH-14  
4.8' TO SHC M-40

LOT M-41 SEWER 11.5' TO REAR OF CURB  
20.4' TO MH-14  
63.5' TO 6" V GREEN SHOOT CT.  
WATER 10.0' TO REAR OF CURB  
18.6' TO MH-14  
60.2' TO 6" V GREEN SHOOT CT.

LOT M-42 SEWER 19.8' TO MH-12  
12.4' TO SHC M-43  
49.4' TO MH-10  
WATER 6.9' BEHIND FACE OF CURB  
42.2' CORNER OF CURB @ ISLAND  
35.4' CORNER CURB @

LOT M-43 SEWER 13.0' TO MH-12  
37.3' TO MH-10  
WATER 6.9' BEHIND FACE OF CURB  
42.2' CORNER OF CURB @ ISLAND  
40.3' CORNER CURB @

LOT M-44 SEWER 30.5' TO MH-12  
16.0' TO MH-10  
WATER 7.6' BEHIND FACE OF CURB  
8.2' N.E. CORNER OF CURB @ AT  
16.0' W. CORNER OF CURB @ ISLAND

LOT M-45 SEWER 16.0' TO MH-10  
42.7' TO MH-12  
28.0' TO SHC M-46  
WATER 7.0' E. CORNER OF CURB @ AT  
11.6' W. CORNER OF CURB @ ISLAND

LOT M-46 SEWER 44.4' TO BLDG. CORNER M-50  
36.0' TO MH-10  
39.0' TO MH-11  
WATER 10.5' TO CORNER CURB @ INLET  
6.3' TO CORNER CURB @ RETURN  
37.6' TO WHC M-45

LOT M-47 SEWER 16.7' TO MH-11  
28.6' TO BLDG. CORNER M-50  
WATER 10.4' TO CORNER CURB @ INLET  
29.0' TO BLOW-OFF  
5.5' BEHIND FACE OF CURB

LOT M-48 SEWER 12.2' TO MH-11  
49.0' TO FRONT CORNER M-50  
19.6' TO SHC M-47  
WATER 29.6' TO CORNER CURB @ INLET  
28.5' TO 6" BLOW-OFF

LOT M-49 SEWER 25.0' TO MH-11  
36.2' TO FRONT CORNER M-50  
18.0' TO SHC M-49  
WATER 26.8' TO CORNER OF INLET  
31.7' TO 6" BLOW-OFF

LOT M-50 SEWER 13.0' TO MH-11  
7.6' TO N.E. CORNER M-50  
WATER 25.6' TO S. CORNER INLET  
25.6' TO N. CORNER INLET

LOT M-51 SEWER 50.7' TO MH-10  
24.0' TO N. CORNER M-51  
33.3' TO S. CORNER M-52  
WATER 42.3' TO S. CORNER INLET  
36.3' TO N. CORNER M-50  
10.3' TO BACK OF CURB

LOT M-52 SEWER 64.0' TO MH-10  
19.0' TO S. CORNER M-52  
41.3' TO N. CORNER M-51  
WATER 10.3' TO REAR OF CURB  
35.6' TO N. CORNER M-53  
48.4' TO S. CORNER M-50

LOT M-53 SEWER 22.5' TO BLDG. CORNER M-52  
31.0' TO BLDG. CORNER M-55  
24.0' TO SHC M-52  
WATER 34.0' TO N. CORNER M-53  
23.0' TO S. CORNER M-54  
10.3' TO REAR OF CURB

LOT M-54 SEWER 16' TO S. CORNER M-54  
34.3' TO S. CORNER M-52  
19.4' TO SHC M-53  
WATER 50.5' TO N. CORNER M-53  
34.4' TO S. CORNER M-54  
11.0' TO REAR OF CURB

LOT M-55 SEWER 48.0' TO MH-4  
24.0' TO N. CORNER M-55  
26.6' TO S. CORNER M-56  
WATER 74.0' TO MH-3  
10.0' BEHIND REAR OF CURB  
36.0' TO S. CORNER M-54

LOT M-56 SEWER 44.4' TO MH-4  
21.8' TO S. CORNER M-56  
21.4' TO SHC M-55  
WATER 57.5' TO MH-3  
63.0' TO S.D. MH  
38.0' TO S. CORNER M-57

LOT M-57 SEWER 31.0' TO MH-4  
21.0' TO S. CORNER M-57  
22.6' TO SHC M-56  
WATER 41.3' TO MH-3  
44.0' TO S.D. MH  
11.4' TO BEHIND CURB

LOT M-58 NO DATA  
LOT M-59 NO DATA

FUTURE LOTS (SEWER ONLY)  
LOT M-60 SEWER 24.0' TO MH-3  
75.6' TO MH-4  
60.0' TO S.D. INLET I-8

LOT M-61 SEWER 43.0' TO MH-3  
53.0' TO MH-4

LOT M-62 SEWER 65.0' TO MH-3  
38.0' TO MH-4  
21.5' TO S.D. INLET I-8

LOT M-63 SEWER 37.0' TO MH-4  
47.5' TO MH-5  
29.4' TO I-8

LOT M-64 SEWER 44.6' TO MH-4  
30.0' TO MH-5

LOT M-65 SEWER 74.0' TO S.D. MH  
31.0' TO SHC M-64  
16.0' TO MH-5

LOT M-66 SEWER 29.8' TO MH-5  
62.0' TO S.D. MH

LOT M-67 SEWER 46.0' TO MH-5  
44.5' TO S.D. MH

DEPARTMENT OF PUBLIC WORKS  
HOWARD COUNTY, MARYLAND

DIRECTOR OF PUBLIC WORKS DATE CHIEF, BUREAU OF ENGINEERING DATE

DES:				
DRN:				
CHK:				
DATE:	BY	NO.	REVISION	DATE

AS-BUILT SHEET

COLUMBIA, VILLAGE OF HICKORY RIDGE  
SECTION 3 AREA 4, LOTS M-2 THRU M-59

34-3269-D

AS-BUILT INFORMATION

SCALE  
AS  
SHOWN

SHEET  
34 OF 34