
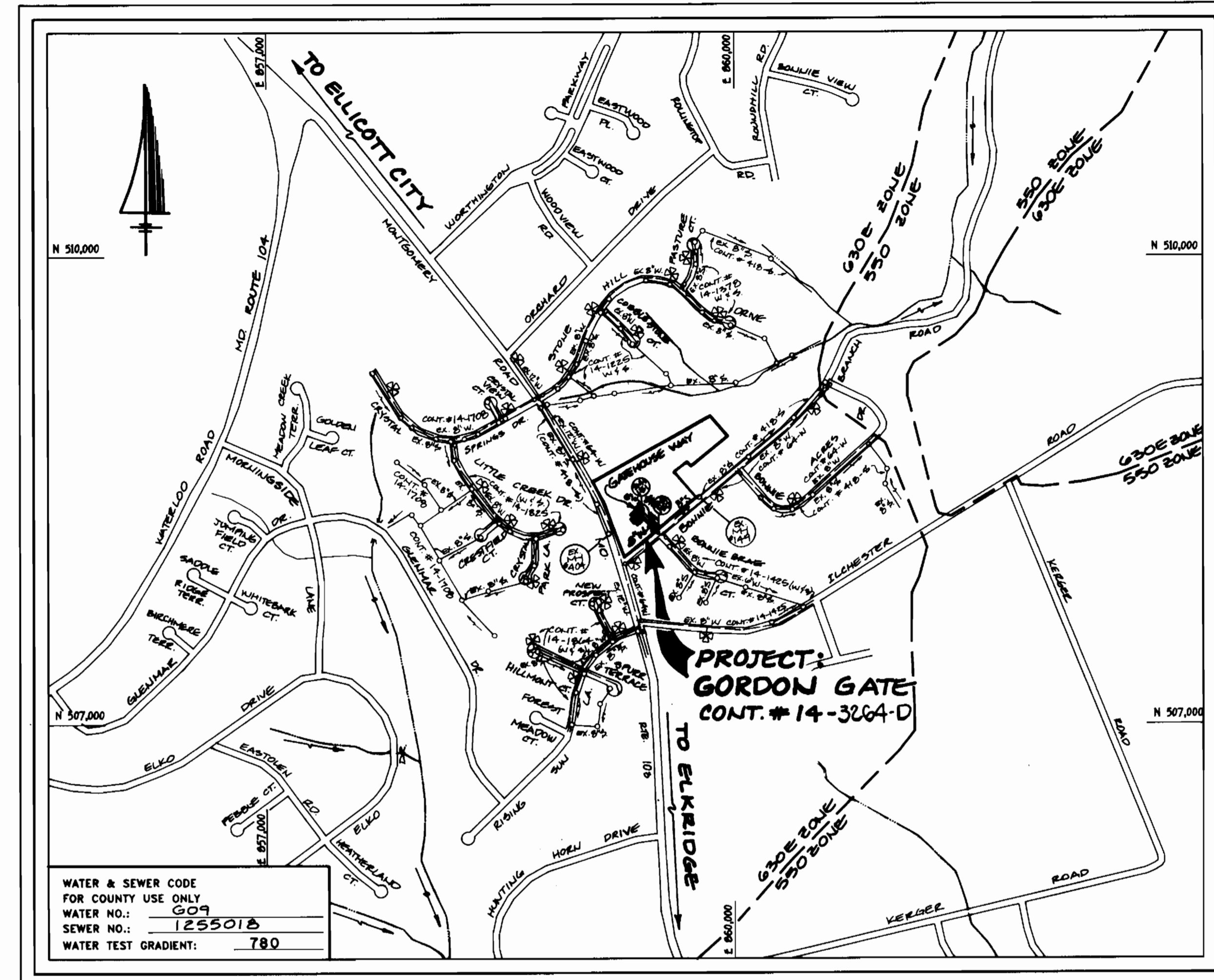


267 WS/1 GORDON GATE LOTS 1-11

GENERAL NOTES:

- APPROXIMATE LOCATION OF EXISTING MAINS ARE SHOWN. THE CONTRACTOR SHALL TAKE ALL NECESSARY PRECAUTIONS TO PROTECT EXISTING MAINS AND SERVICES AND MAINTAIN UNINTERRUPTED SUPPLY. ANY DAMAGE INCURRED SHALL BE REPAIRED IMMEDIATELY TO THE SATISFACTION OF THE ENGINEER AT THE CONTRACTOR'S EXPENSE.
- ALL HORIZONTAL CONTROLS ARE BASED ON MARYLAND STATE COORDINATES.
- ALL VERTICAL CONTROLS ARE BASED ON U.S.G.S. DATUM.
- ALL PIPE ELEVATIONS ARE INVERT ELEVATIONS.
- FOR DETAILS NOT SHOWN ON THE DRAWINGS, AND FOR MATERIALS AND CONSTRUCTION METHODS, USE HOWARD COUNTY DESIGN MANUAL, VOLUME IV, STANDARD SPECIFICATIONS AND DETAILS FOR CONSTRUCTION (1991 AMENDMENTS) THE CONTRACTOR SHALL HAVE A COPY OF VOLUME IV ON THE JOB SITE.
- WHERE TEST PITS HAVE BEEN MADE ON EXISTING UTILITIES, THEY ARE NOTED BY THE SYMBOL  AT THE LOCATION OF THE TEST PIT. A NOTE OR NOTES CONTAINING THE RESULTS OF THE TEST PIT OR PITS IS INCLUDED ON THE DRAWINGS. EXISTING UTILITIES IN THE VICINITY OF THE PROPOSED WORK FOR WHICH TEST PITS HAVE NOT BEEN DUG SHALL BE VERIFIED BY THE CONTRACTOR TO HIS OWN SATISFACTION. ANY DAMAGE TO EXISTING FACILITIES DUE TO THE CONTRACTOR'S NEGLIGENCE SHALL BE REPAIRED AT THE CONTRACTOR'S EXPENSE.
- CONTRACTOR SHALL NOTIFY THE FOLLOWING UTILITIES OR AGENCIES AT LEAST FIVE WORKING DAYS BEFORE STARTING WORK SHOWN ON THESE PLANS:
 - STATE HIGHWAY ADMINISTRATION - 531-5533
 - BALTIMORE GAS & ELECTRIC CO. - CONTRACTOR SERVICES - 850-4820
 - BALTIMORE GAS & ELECTRIC CO. - UNDER GROUND DAMAGE CONTROL - 787-9068
 - MISS UTILITY - 1-800-257-7777
 - COLONIAL PIPELINE CO. - 795-1390
 - BUREAU OF UTILITIES, HOWARD COUNTY DEPARTMENT OF PUBLIC WORKS - 313-4900
- TREES AND SHRUBS ARE TO BE PROTECTED FROM DAMAGE TO MAXIMUM EXTENT. TREES AND SHRUBS LOCATED WITHIN THE CONSTRUCTION STRIP ARE NOT TO BE REMOVED OR DAMAGED BY THE CONTRACTOR.
- CONTRACTOR SHALL REMOVE TREES, STUMPS AND ROOTS ALONG THE LINE OF EXCAVATION. PAYMENT FOR SUCH REMOVAL SHALL BE INCLUDED IN THE UNIT PRICE BID FOR CONSTRUCTION OF THE MAIN.
- ALL SEWER MAINS SHALL BE D.I.P., R.C.P., C.S.P.X., R.C.C.P., V.C.P.X., OR P.V.C. UNLESS OTHERWISE NOTED.
- ALL MANHOLES SHALL BE 4'-0" INSIDE DIAMETER UNLESS OTHERWISE NOTED.
- T.B. DENOTES TEST BORING.
- MANHOLES SHOWN WITH 12" AND 18" WALLS ARE FOR BRICK MANHOLES ONLY.
- MANHOLES DESIGNATED W.T. IN PLAN AND PROFILE SHALL HAVE WATERTIGHT FRAME AND COVERS, STANDARD DETAIL G 5.52.
- WHERE WATERTIGHT MANHOLE FRAME AND COVER IS USED, SET TOP OF FRAME 1'-6" ABOVE FINISHED GRADE UNLESS OTHERWISE NOTED ON THE PLANS OR IN THE SPECIFICATIONS.
- HOUSE(S) WITH THE SYMBOL "C.N.S." INDICATES THAT THE CELLAR CANNOT BE SERVED.
- ALL WATER HOUSE CONNECTIONS SHALL BE FOR INSIDE METER SETTING, UNLESS OTHERWISE NOTED ON THE PLANS OR IN THE SPECIFICATIONS.
- MANHOLES LOCATED WITHIN THE PROPOSED ROADWAY SHALL HAVE STANDARD HEAVY TRAFFIC MANHOLE AND COVERS, STANDARD DETAIL G5.51.
- WATER MAINS AND WATER HOUSE CONNECTION LINES MUST BE PLACED AS TO HAVE ONE (1) FOOT SEPARATION FROM THE SEWER MAIN OR SEWER HOUSE CONNECTION AS THEY PASS ABOUT IT.
- ALL WATER MAINS SHALL BE D.I.P., CLASS 52 UNLESS OTHERWISE NOTED.
- TOPS OF ALL WATER MAINS TO HAVE A MINIMUM OF 3-1/2' COVER UNLESS OTHERWISE NOTED.
- VALVES ADJACENT TO TEES SHALL BE STRAPPED TO TEES.
- ALL FITTINGS SHALL BE BUTTRESSED OR ANCHORED WITH CONCRETE IN ACCORDANCE WITH THE STANDARD DETAILS UNLESS OTHERWISE PROVIDED FOR ON THE DRAWINGS.
- FIRE HYDRANTS SHALL BE SET TO THE BURY LINE ELEVATION SHOWN ON THE DRAWINGS. ALL FIRE HYDRANTS SHALL BE RESTRAINED AND BUTTRESSED WITH CONCRETE IN ACCORDANCE WITH THE STANDARD DETAILS. SOIL AROUND THE FIRE HYDRANT SHALL BE COMPACTED IN ACCORDANCE WITH SECTION 1000 AND 1005 OF THE STANDARD SPECIFICATIONS.
- THE CONTRACTOR SHALL NOT OPERATE ANY WATER MAIN VALVES ON THE EXISTING WATER SYSTEM.
- ALL D.I.P. FITTINGS SHALL BE IN ACCORDANCE WITH ANWA SPECIFICATIONS C-153; DUCTILE IRON COMPACT FITTINGS, 3-INCH THROUGH 12-INCH FOR WATER AND OTHER LIQUIDS.
- THE CONTRACTOR SHALL NOTIFY THE BUREAU OF HIGHWAYS, HOWARD COUNTY, (410) 313-2450 AT LEAST FIVE WORKING DAYS BEFORE ANY OPEN CUT OF ANY COUNTY ROAD OR BORING/JACKING OPERATION IN COUNTY ROADS FOR LAYING WATER/SEWER MAINS OR HOUSE CONNECTIONS. THE APPROVAL OF THESE DRAWINGS WILL CONSTITUTE COMPLIANCE WITH DPW REQUIREMENTS PER SECTION 18.114(a) OF THE HOWARD COUNTY CODE.



WATER & SEWER CODE FOR COUNTY USE ONLY
 WATER NO.: 609
 SEWER NO.: 1255018
 WATER TEST GRADIENT: 780

TYPE OF BUILDING: RESIDENTIAL; SINGLE FAMILY DETACHED
 NUMBER OF LOTS: 11 (BUILDABLE 10)
 NO. OF WATER HOUSE CONNECTIONS: 9
 NO. OF SEWER HOUSE CONNECTIONS: 10
 DRAINAGE AREA: PATAPSCO
 TREATMENT PLANT: PATAPSCO WASTEWATER TREATMENT PLANT; CITY OF BALTIMORE

VICINITY MAP
SCALE: 1"=600'

QUANTITIES				
ITEM	ESTIMATED	QUANTITIES	AS-BUILT TYPE	SUPPLIER
8" WATER	180 LF.	181 LF	DIP/Graflex	Dolan Rd Supply
6" WATER	76 LF.	73 LF	"	"
1" WHC	50 LF.	74 LF	KOPFER/Mueller	"
3/4" WHC	305 LF.	319 LF	"	"
FIRE HYDRANT	1 EACH	1	MUELLER	"
8" B.T.S. & VALVE	1 EACH	1	US PIPE/Mueller	"
6" VALVE	1 EACH	1	MUELLER	"
8" SEWER	447 LF.	438 LF	PRECAST/PIPE	"
4" SEWER MANHOLES	415 LF.	427 LF	"	Dolan Rd Supply
	2 EACH	2	Precast/Atlantic	ATLANTIC P.

NAME OF UTILITY CONTRACTOR:
 SURVEY & DRAFTING DIVISION AS-BUILT DATE:

CONTRACT No. 14-3264-D
GORDON GATE
LOTS 1 - 11
WATER AND SEWER MAIN EXTENSIONS
HOWARD COUNTY, MARYLAND
DEPARTMENT OF PUBLIC WORKS

THIS DEVELOPMENT IS APPROVED FOR EROSION AND SEDIMENT CONTROL BY HOWARD SOIL CONSERVATION DISTRICT.

APPROVED:  3/28/94
 HOWARD SOIL CONSERVATION DISTRICT DATE


SEDIMENT CONTROL MEASURES FOR THIS CONTRACT WILL BE IMPLEMENTED IN ACCORDANCE WITH SECTION 219 OF HOWARD COUNTY DESIGN MANUAL & STANDARDS AND SPECIFICATIONS FOR SOIL EROSION AND SEDIMENT CONTROL IN DEVELOPING AREAS AND ALSO AS SHOWN ON THE GRADING AND SEDIMENT CONTROL PLAN F 93-09-04 REVIEWED FOR HOWARD COUNTY SOIL CONSERVATION DISTRICT AND MEETS TECHNICAL REQUIREMENTS.

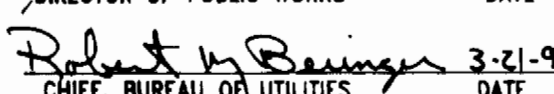
 3-28-94
 U.S. SOIL CONSERVATION SERVICE DATE


PLAN REFERENCE NUMBERS:
 P 93-14 S 93-09
 F 93-04


CONTRACT NO. 14-3264-D
 GORDON GATE
 LOTS 1 - 11
 WATER AND SEWER EXTENSIONS
 HOWARD COUNTY, MARYLAND

DEPARTMENT OF PUBLIC WORKS
 HOWARD COUNTY, MARYLAND

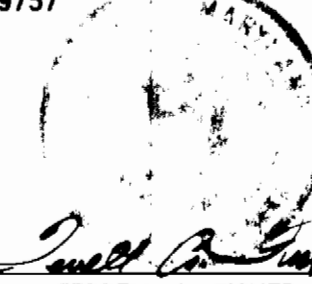
 3/29/94
 DIRECTOR OF PUBLIC WORKS DATE

 3-21-94
 CHIEF, BUREAU OF UTILITIES DATE

 3/29/94
 CHIEF, BUREAU OF ENGINEERING DATE

 3/29/94
 CHIEF, LAND DEVELOPMENT DIVISION DATE

FISHER, COLLINS & CARTER, INC.
 CIVIL ENGINEERING CONSULTANTS & LAND SURVEYORS
 SUITE 100, 9171 BALTIMORE NATIONAL PIKE
 ELLICOTT CITY, MARYLAND 21042
 (410) 481 - 2855

#9757

 TERRELL A. FISHER

DES:	M.S.V.			
DRWN:	J.C.A.			
CHK:	P.W.K.			
DATE:				
BY	NO.	REVISION	DATE	

TITLE SHEET

600' SCALE MAP NO. 31 BLOCK NO. 14

GORDON GATE
 LOTS 1 - 11
 CONTRACT NO. 14-3264-D
 SECOND ELECTION DISTRICT
 HOWARD COUNTY, MARYLAND

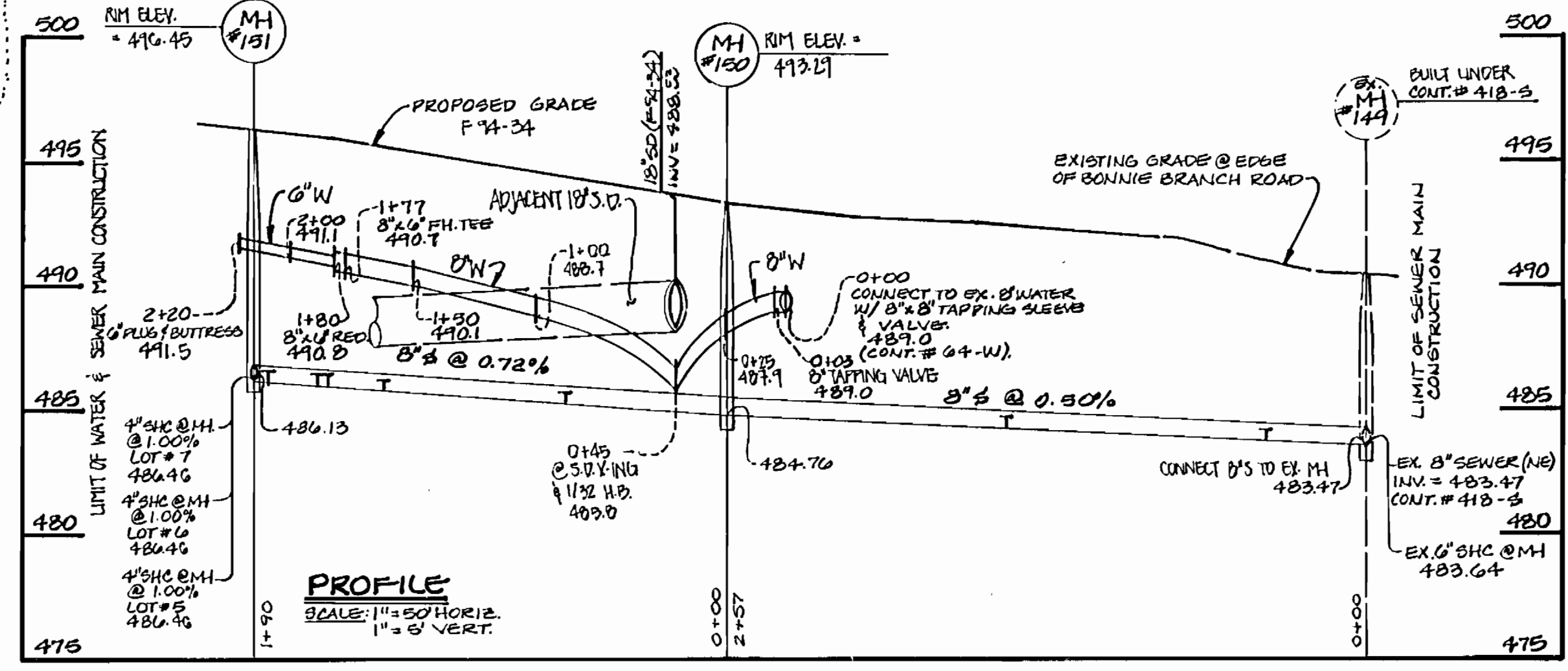
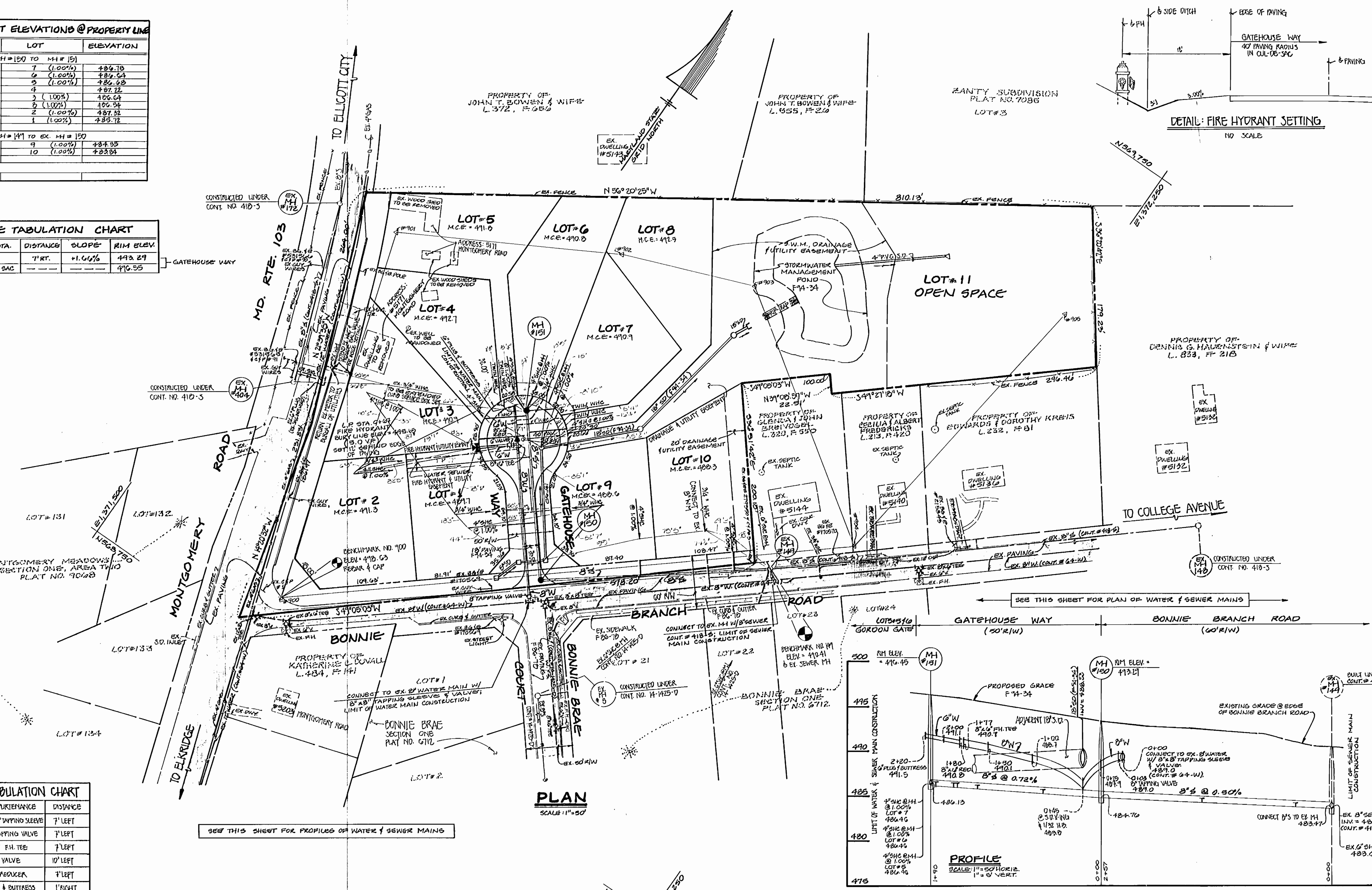
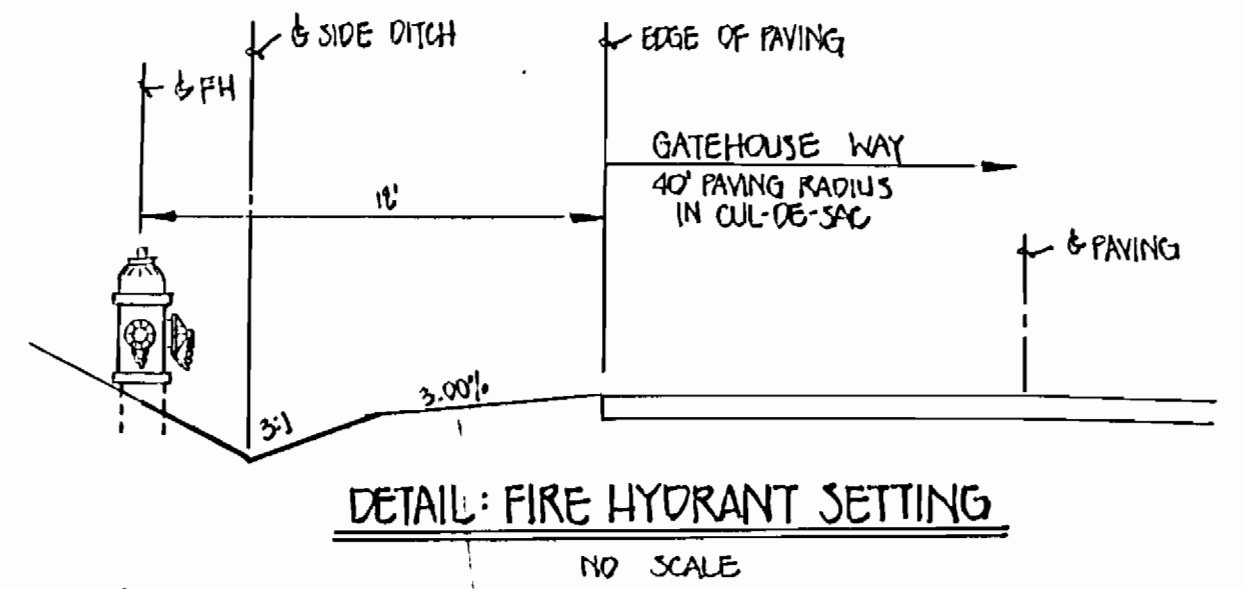
SCALE AS SHOWN
 SHEET 1 OF 2

326A WS/2 GORDON GATE LOTS 1-11

STATION	LOT	ELEVATION
MH #150 TO MH #151		
@ 5" MH #151 RT	7 (1.00%)	+84.78
@ 5" MH #151 CT	6 (1.00%)	+84.64
@ 5" MH #151 LT	5 (1.00%)	+84.62
1+03 LT	4	+87.72
1+00 LT	3 (1.00%)	+86.64
1+05 RT	6 (1.00%)	+86.64
1+08 LT	2 (1.00%)	+87.32
0+69 LT	1 (1.00%)	+85.72
MH #149 TO EX. MH #150		
1+45 RT	9 (1.00%)	+84.35
0+40 RT	10 (1.00%)	+83.84

NO.	RD. STA.	DISTANCE	SLOPE	RIM ELEV.
#150	0+18	7' RT.	+1.67%	493.29
#151	IN CUL-DE-SAC			496.55

ROAD STATION	APPURTENANCE	DISTANCE
0+03 GATEHOUSE WAY	8" TAPPING SLEEVE	7' LEFT
0+00 " "	8" TAPPING VALVE	7' LEFT
1+71 " "	8" F.H. TEE	7' LEFT
1+71 " "	6" VALVE	10' LEFT
1+73 " "	8" REDUCER	7' LEFT
1+32.1+22 " "	6" PLUG & BUTTBESS	1' RIGHT



SEE THIS SHEET FOR PROFILES OF WATER & SEWER MAINS

SEE THIS SHEET FOR PLAN OF WATER & SEWER MAINS

CONTRACT NO. 14-3264-D
GORDON GATE
LOTS 1-11
WATER AND SEWER MAIN EXTENSIONS
HOWARD COUNTY, MARYLAND

DEPARTMENT OF PUBLIC WORKS
HOWARD COUNTY, MARYLAND
Director of Public Works: *James J. Lewis* 3/29/14
Chief, Bureau of Engineering: *Donald J. Johnson* 3/29/14
Chief, Bureau of Utilities: *Robert J. Brown* 3-21-14
Chief, Land Development Division: *John J. DeWitt* 3/29/14

FISHER, COLLINS, AND CARTER, INC.
CONSULTING ENGINEERS AND LAND SURVEYORS
9171 BALTIMORE NATIONAL PIKE
SUITE 100
ELLICOTT CITY, MARYLAND 21043
(410) 461-2855
TERRELL A. FISHER

DES: M.S.V.
DRN: M.S.V.
CHK: P.W.K.
DATE: _____
BY NO. _____
REVISION _____

WATER AND SEWER MAINS
PLAN AND PROFILES
800 SCALE MAP NO. 31 BLOCK NO. 14

GORDON GATE
LOTS 1-11
CONTRACT NO. 14-3264-D
SECOND ELECTION DISTRICT
HOWARD COUNTY, MARYLAND
SCALE AS SHOWN
SHEET 2 OF 2
BUILT 10/24/14
NO. 30-427