

CONTRACT NO. 24-3263-D

VILLAGE OF LONGREACH

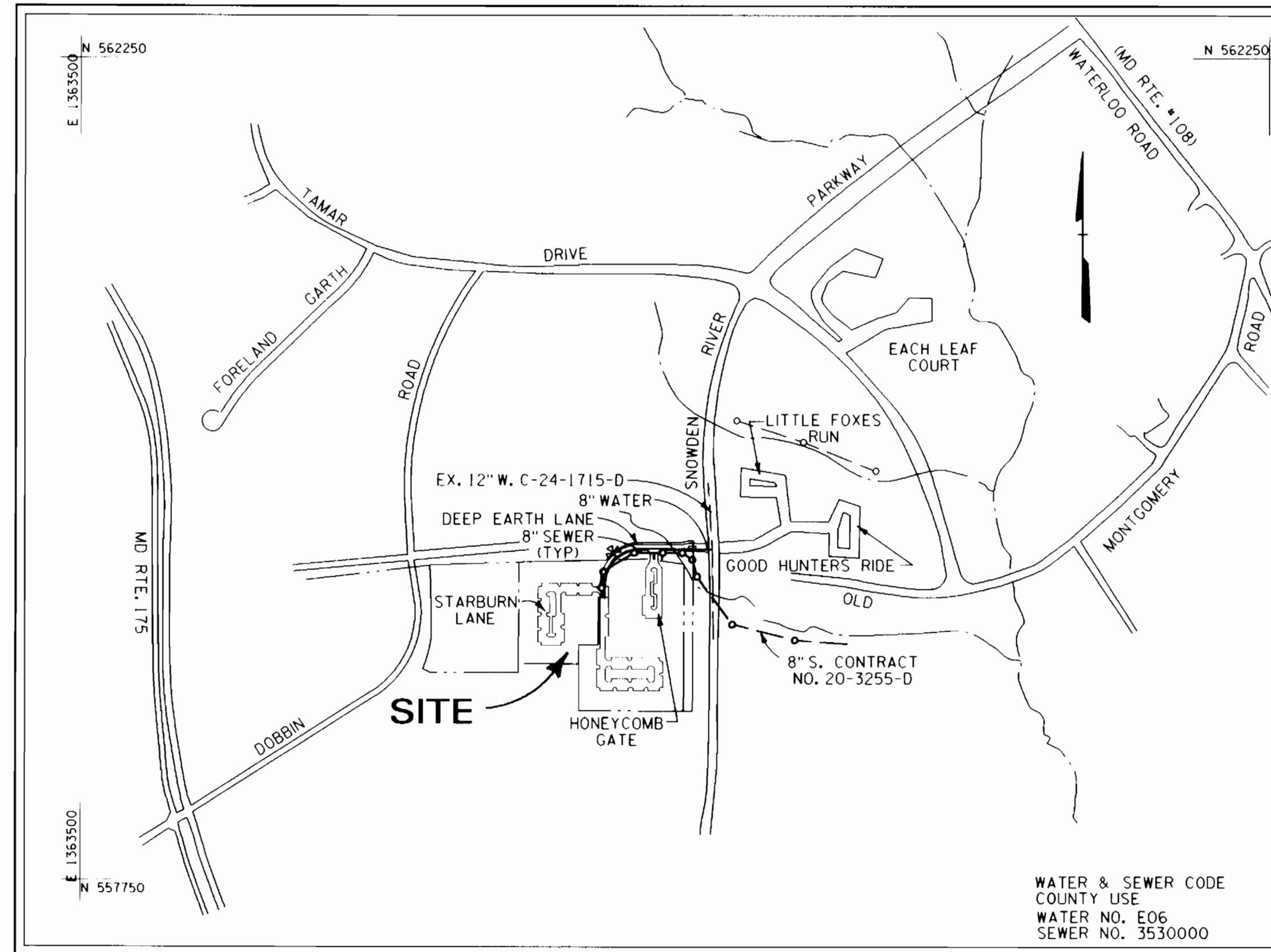
SECTION 4, AREA 3

HOWARD COUNTY, MARYLAND

DEPARTMENT OF PUBLIC WORKS

SEWER HOUSE CONNECTION TABLE

	LOT	INV. AT E	MIN. C
MH-206-206	A35 0+02	381.8	385.4
MH-206-206 PLUG	A36 0+07	382.0	385.6
MH-206-206 PLUG	A37 0+27	382.2	385.9



VICINITY MAP

SCALE: 1" = 600'

TYPE OF BUILDING:	TOWNHOUSE
NO. OF LOTS / PARCELS:	3
NO. OF WATER HOUSE CONNECTIONS:	3
NO. OF SEWER HOUSE CONNECTIONS:	3
DRAINAGE AREA:	DORSEY RUN
TREATMENT PLANT:	LITTLE PATUXENT WATER QUALITY MANAGEMENT CENTER, SAVAGE, HOWARD COUNTY (VIA DORSEY PUMPING STATION)

QUANTITIES			
ITEM	QUANTITIES ESTIMATED	AS-BUILT	
		QUANTITIES	MANUFACTURER/SUPPLIER
8" W.	841 LF	D.I.P.	ATLANTIC STATES
6" W.	22 LF	D.I.P.	"
8" S.	626 LF	P.V.C.	O.M. MANUFACTURING
4" S.	141 LF	P.V.C.	"
1" W.H.C.	32 LF	K. COPPER	"
FIRE HYDRANT	1 EA	CAST IRON	MUELLER CO.
4" DIA. MH	6 EA	PRECAST	ATLANTIC CONCRETE
8" VALVE	3 EA	CAST IRON	MUELLER CO.
12" x 8" TS&V	1 EA	CAST IRON	MUELLER CO.
8" D.J.P., CL. 52	167 LF	D. I. P.	ATLANTIC STATES
1 1/2" W.H.C.	39 LF	K. COPPER	"

NAME OF UTILITY CONTRACTOR: GAINES AND COMPANY INC.
SURVEY AND DRAFTING DIVISION AS-BUILT DATE: _____

BENCHMARK

DESCRIPTION
STATION 37DR (1/4" REBAR)
N169881.1794, E416566.71551 (FOR HORIZONTAL CONTROL ONLY)
STATION IS LOCATED 0.45+ MILES NORTH OF RTE. 175
AND 46+ EAST OF THE EAST CURB OF SNOWDEN RIVER PARKWAY

BENCHMARK

DESCRIPTION
STATION 2542001 (CONCRETE MONUMENT)
ELEV. 426.971 (FOR VERTICAL CONTROL ONLY)
STATION IS LOCATED ON BG&E TRANSMISSION LINES 1060+ S.W. OF DOBBIN ROAD

BENCHMARK

DESCRIPTION
STATION 361A (CONCRETE MONUMENT)
N169205.9263, E416313.5119 (FOR HORIZONTAL CONTROL ONLY)
STATION IS LOCATED AT THE SOUTHEAST CORNER OF THE INTERSECTION OF SNOWDEN RIVER PARKWAY AND RTE. 175
3+ FROM CURB AND 5.7+ FROM GUARDRAIL END

BENCHMARK

DESCRIPTION
STATION 2542002 (CONCRETE MONUMENT)
ELEV. 363.638 (FOR VERTICAL CONTROL ONLY)
STATION IS LOCATED 1000+ WEST OF RTE. 175 ON TRANSMISSION LINE AT G. & E. TOWER 19-E NEAR HANOVERS RESTAURANT ENTRANCE

GENERAL NOTES

- PART I**
- APPROXIMATE LOCATION OF EXISTING MAINS ARE SHOWN. THE CONTRACTOR SHALL TAKE ALL NECESSARY PRECAUTIONS TO PROTECT EXISTING MAINS AND SERVICES AND MAINTAIN UNINTERRUPTED SUPPLY. ANY DAMAGE INCURRED SHALL BE REPAIRED IMMEDIATELY TO THE SATISFACTION OF THE ENGINEER AT THE CONTRACTOR'S EXPENSE.
 - ALL HORIZONTAL CONTROLS ARE BASED ON MARYLAND STATE COORDINATES.
 - ALL VERTICAL CONTROLS ARE BASED ON U.S.G.S. DATA.
 - ALL PIPE ELEVATIONS SHOWN ARE INVERT ELEVATIONS.
 - CLEAR ALL UTILITIES BY A MINIMUM OF 6'; CLEAR ALL POLES BY 2'-0" MINIMUM OR TUNNEL AS REQUIRED. THE OWNER HAS CONTACTED THE UTILITY COMPANIES AND HAS MADE ARRANGEMENTS FOR BRACING OF POLES AS SHOWN ON THE DRAWINGS. IN THE EVENT THE CONTRACTOR'S WORK REQUIRES THE BRACING OF ADDITIONAL POLES, ANY COST INCURRED BY THE OWNER FOR BRACING OF ADDITIONAL POLES OR DAMAGES SHALL BE DEDUCTED FROM MONEY OWED THE CONTRACTOR. THE CONTRACTOR SHALL COORDINATE WITH THE UTILITY COMPANIES TO SCHEDULE THE BRACING OF THE POLES.
 - FOR DETAILS NOT SHOWN ON THE DRAWINGS AND FOR MATERIALS AND CONSTRUCTION METHODS USE HOWARD COUNTY DESIGN MANUAL, VOLUME IV, STANDARD SPECIFICATIONS AND DETAIL FOR CONSTRUCTION (LATEST EDITION). THE CONTRACTOR SHALL HAVE A COPY OF VOLUME IV ON THE JOB.
 - WHERE TEST PITS HAVE BEEN MADE ON EXISTING UTILITIES, THEY ARE NOTED BY THE SYMBOL AT THE LOCATION OF THE TEST PIT. A NOTE OR NOTES CONTAINING THE RESULTS OF THE TEST PIT OR PITS IS INCLUDED ON THE DRAWINGS. EXISTING UTILITIES IN THE VICINITY OF THE PROPOSED WORK FOR WHICH TEST PITS HAVE NOT BEEN DUG SHALL BE LOCATED BY THE CONTRACTOR TWO WEEKS IN ADVANCE OF CONSTRUCTION OPERATIONS AT HIS OWN EXPENSE.
 - CONTRACTOR SHALL NOTIFY THE FOLLOWING UTILITY COMPANIES OR AGENCIES AT LEAST FIVE WORKING DAYS BEFORE STARTING WORK SHOWN ON THESE PLANS:

STATE HIGHWAY ADMINISTRATION	531-5533
BG&E CO. CONTRACTOR SERVICES	850-4620
BG&E CO. UNDER GROUND DAMAGE CONTROL	787-9068
MIS'S UTILITY	1-800-257-7777
COLONIAL PIPELINE CO.	795-1390
HOWARD COUNTY DEPARTMENT OF PUBLIC WORKS BUREAU OF UTILITIES	313-4900
- PART II - WATER**
- ALL WATER MAINS TO BE D.J.P. CLASS 52 UNLESS OTHERWISE NOTED.
 - TOPS OF ALL WATER MAINS TO HAVE A MINIMUM OF 3'-1/2" COVER UNLESS OTHERWISE NOTED.
 - VALVES ADJACENT TO TEES SHALL BE STRAPPED TO TEES.
 - ALL FITTINGS SHALL BE BUTTRESSED OR ANCHORED WITH CONCRETE IN ACCORDANCE WITH THE STANDARD DETAILS UNLESS OTHERWISE PROVIDED FOR ON THE DRAWINGS.
 - FIRE HYDRANTS SHALL BE SET TO THE BURY LINE ELEVATIONS SHOWN ON THE DRAWINGS. ALL FIRE HYDRANTS SHALL BE RESTRAINED AND BUTTRESSED WITH CONCRETE IN ACCORDANCE WITH STANDARD DETAILS. SOIL AROUND THE FIRE HYDRANT SHALL BE COMPACTED IN ACCORDANCE WITH SECTION 1000 AND 1005 OF THE STANDARD SPECIFICATIONS.
 - THE CONTRACTOR SHALL NOT OPERATE ANY WATER MAIN VALVES ON THE EXISTING WATER SYSTEM.
 - ALL WATER HOUSE CONNECTIONS SHALL BE FOR INSIDE METER SETTING UNLESS OTHERWISE NOTED ON PLANS OR IN SPECIFICATIONS. ALL W.H.C.'S SHALL BE 1 IN., ALL METERS SHALL BE 3/4 IN.
- PART III - SEWER**
- ALL SEWER MAINS SHALL BE DIP, RCP, VCPX, CSPX, RCCP, AND P.V.C. UNLESS OTHERWISE NOTED.
 - THE CONTRACTOR SHALL PROVIDE A JOINT IN ALL SEWER MAINS WITHIN 2'-0" OF EXTERIOR MANHOLE WALL.
 - ALL MANHOLES SHALL BE 4'-0" INSIDE DIAMETER UNLESS OTHERWISE NOTED.
 - FORCE MAINS SHALL BE D.I.P. ONLY.
 - MANHOLES SHOWN WITH 12" AND 16" WALLS ARE FOR BRICK MANHOLES ONLY.
 - MANHOLES DESIGNATED W.T. IN PLAN AND PROFILE SHALL HAVE WATERTIGHT FRAME AND COVERS, STANDARD DETAIL G5.52. WHERE WATERTIGHT MANHOLE FRAME AND COVER IS USED, SET TOP OF FRAME 1'-6" ABOVE FINISHED GRADE UNLESS OTHERWISE NOTED ON THE DRAWINGS.
 - HOUSE(S) WITH THE SYMBOL "C.N.S." INDICATES THAT CELLAR CANNOT BE SERVED.

REVIEWED FOR HOWARD SOIL CONSERVATION DISTRICT AND MEETS TECHNICAL REQUIREMENT
J.H. W. [Signature] 9/15/93
SIGNATURE DATE

THIS DEVELOPMENT PLAN IS APPROVED FOR SOIL EROSION AND SEDIMENT CONTROL BY THE HOWARD COUNTY CONSERVATION DISTRICT.
APPROVED *John R. Robertson* 9/15/93
HOWARD S.C.D. DATE

SEDIMENT CONTROL MEASURES WILL BE IMPLEMENTED IN ACCORDANCE WITH SECTION 219 OF THE SPECIFICATIONS AND WITH ROAD CONSTRUCTION PLANS F-93-130

DEPARTMENT OF PUBLIC WORKS
HOWARD COUNTY, MARYLAND
Director of Public Works - DATE *James M. [Signature]* 9/20/93
Chief - Bureau of Engineering - DATE *Robert [Signature]* 9/20/93
Chief - Bureau of Utilities - DATE *Robert [Signature]* 9-10-93
Chief - Land Development Division - DATE *Robert [Signature]* 9/20/93

DMW
Daft · McCune · Walker, Inc.
A Team of Land Planners, Landscape Architects, Engineers, Surveyors & Environmental Professionals
200 East Pennsylvania Avenue
Towson, Maryland 21286
410 296 3333
Fax 296 4705

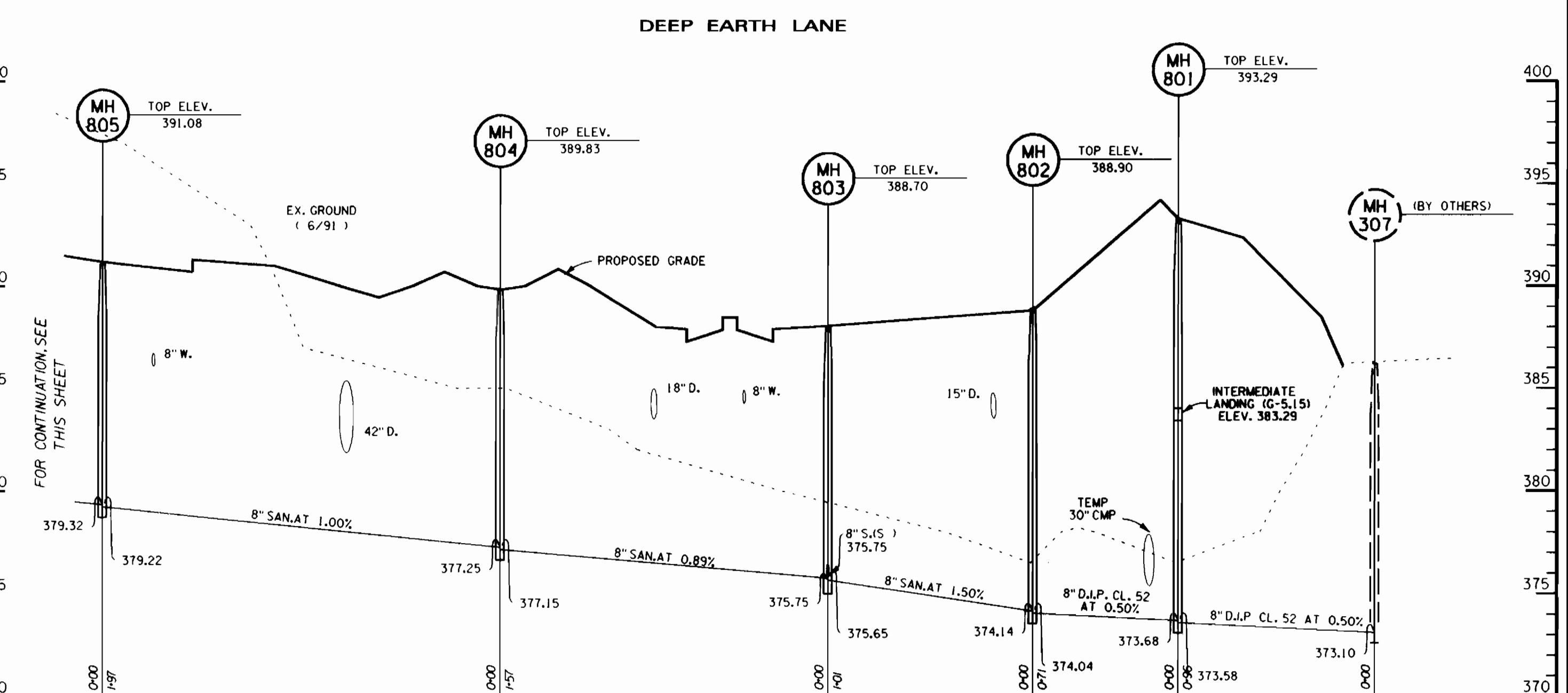
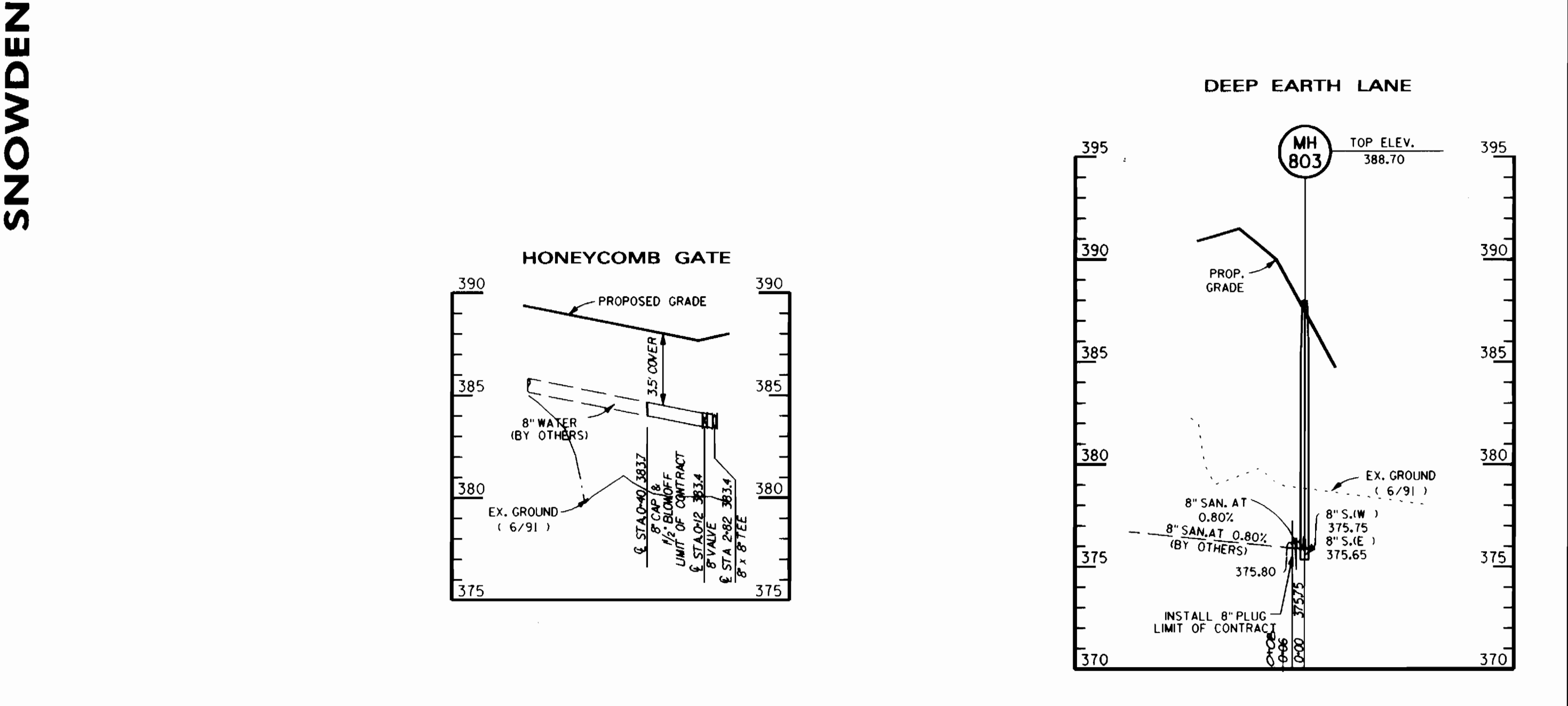
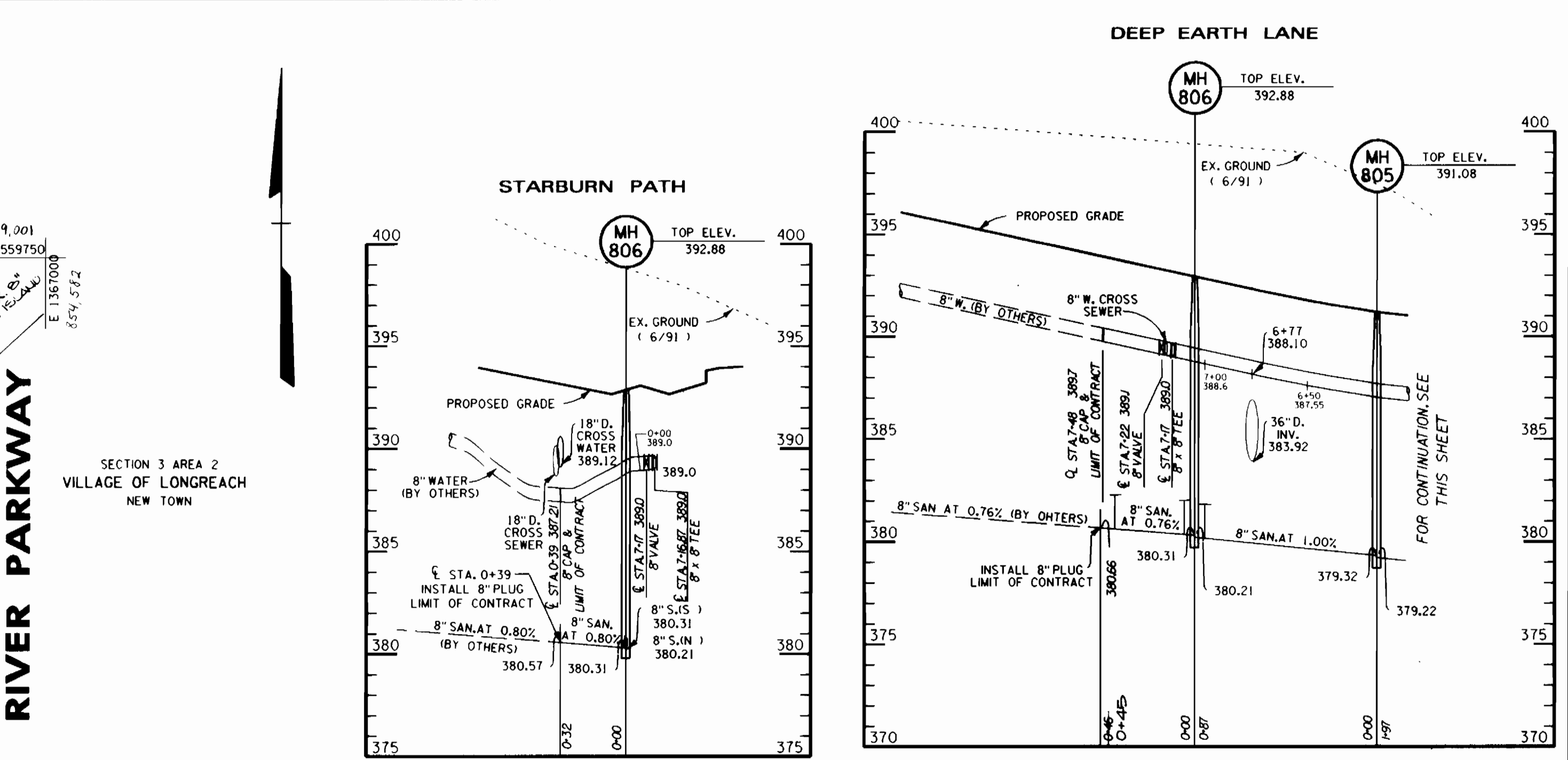
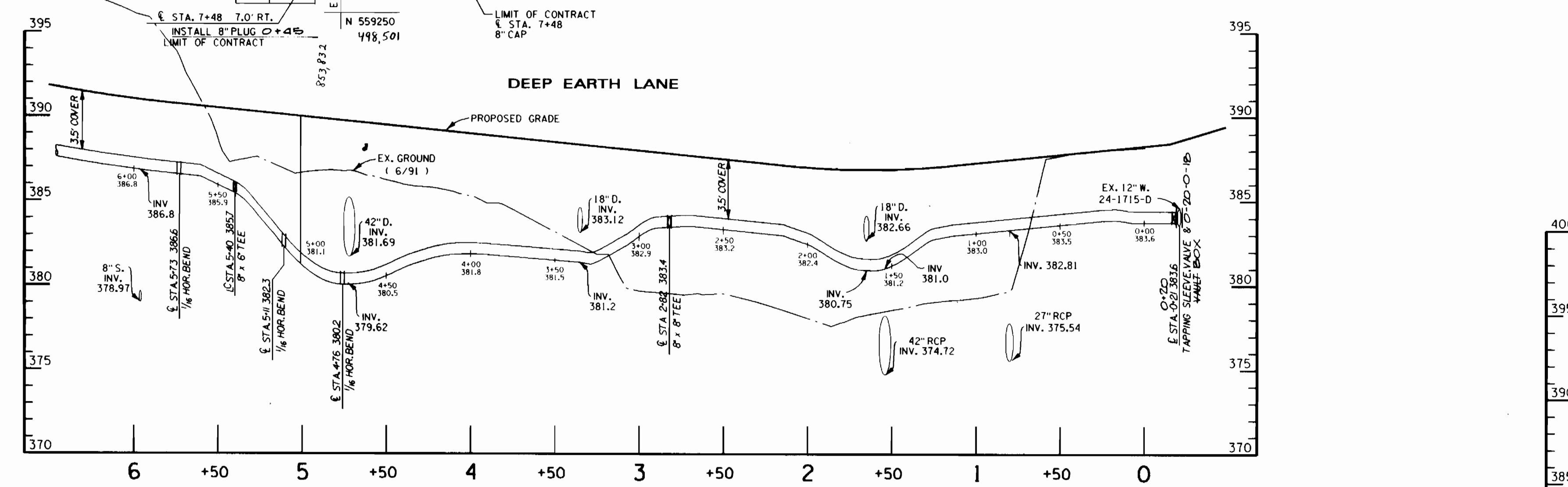
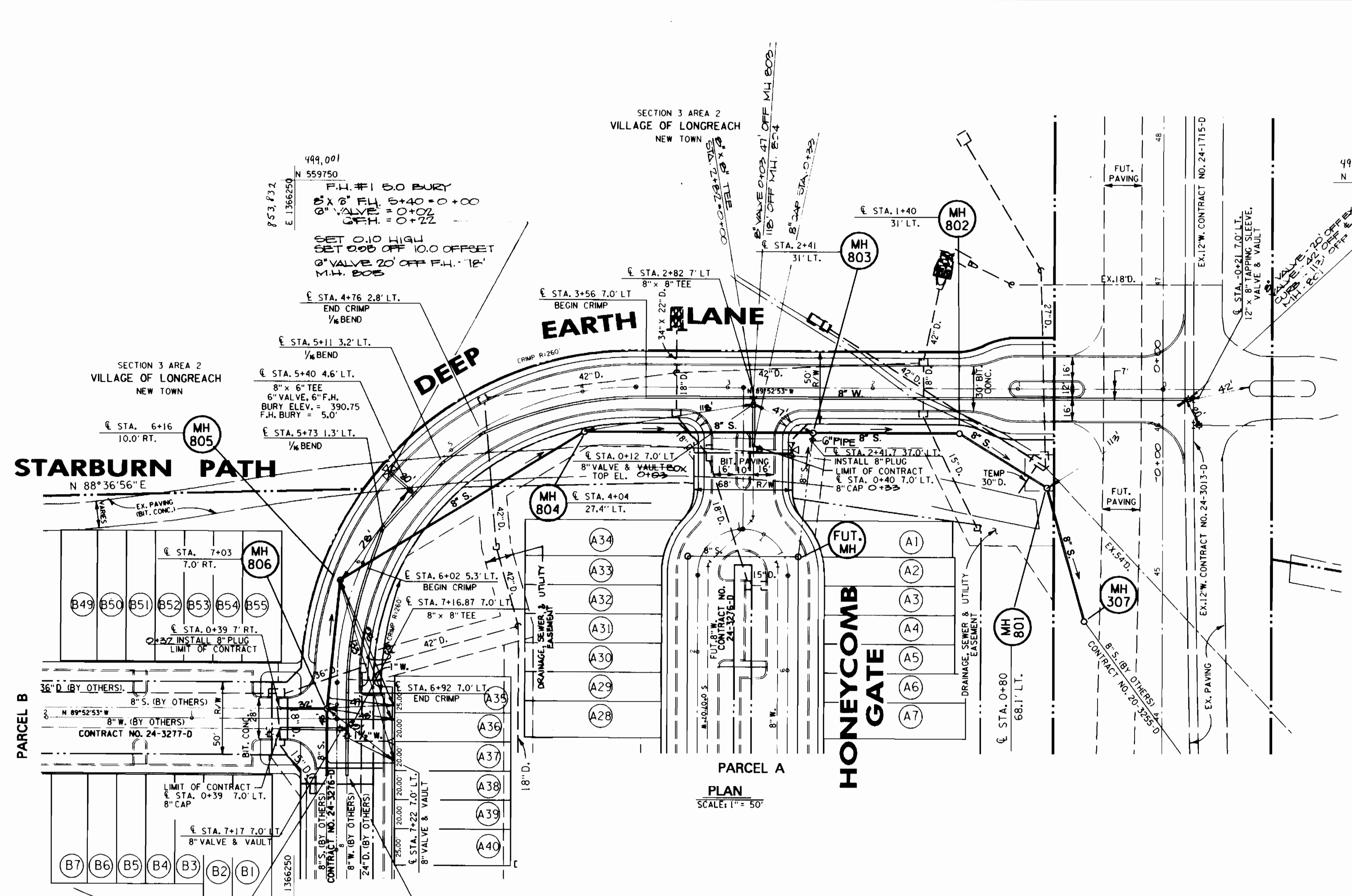


DESIGN BY:	JCS		
DRAWN BY:	JMJ		
CHECKED BY:	JWR		
DATE:	7/22/93		
BY	NO.	REVISION	DATE

WATER AND SANITARY SEWER AS-BUILTS
TITLE SHEET
600 SCALE MAP NO. 37 BLOCK NO. 7

COLUMBIA
VILLAGE OF LONGREACH
SECTION 4 AREA 3
LOTS A35 THRU A37
6TH ELECTION DISTRICT
SCALE AS SHOWN
SHEET 1 OF 2
CONTRACT NO. 24-3263-D

1/0-5925
CIM



DEPARTMENT OF PUBLIC WORKS
 HOWARD COUNTY, MARYLAND
 Director of Public Works - DATE
 Chief - Bureau of Engineering - DATE
 Chief - Bureau of Utilities - DATE
 Chief - Land Development Division - DATE

DMW
 Daft · McCune · Walker, Inc.
 A Team of Land Planners, Landscape Architects, Engineers, Surveyors & Environmental Professionals
 200 East Pennsylvania Avenue
 Towson, Maryland 21286
 410 296 3333
 Fax 296 4705

DESIGN BY: JCS
 DRAWN BY: JMJ
 CHECKED BY: JWR
 DATE: 7/22/93

BY	NO.	REVISION	DATE

WATER & SEWER
 PLAN & PROFILES

WATER AND SEWER IN DEEP EARTH LANE
 COLUMBIA
 VILLAGE OF LONGREACH
 SECTION 4 AREA 3
 LOTS A35 THRU A37
 6TH ELECTION DISTRICT
 CONTRACT NO. 24-3263-D

SCALE
 HOR: 1"=50'
 VERT: 1"=5'
 SHEET
 2 OF 2