

AS-BUILT 1/27/95

lots 1-27

WS/1 AUTUMN VIEW

3249

QUANTITIES				
ITEM	ESTIMATED	AS-BUILT		
		QUANTITIES	TYPE	SUPPLIER
8" WATER	2202 LF.	2182.20	CL. 62-D.I.P.	GRIFFIN PIPE
6" WATER	780 LF.	361.20	" " "	" " "
1" WHC	230 LF.	243 LF.	K-COPPER	B.R.S.
3/4" WHC	346 LF.	370 LF.	" " "	B.R.S.
FIRE HYDRANTS	2 EACH	2	MUELLER CO.	B.R.S.
8" DIVISION VALVE	1 EACH	1	" " "	" " "
8" VALVE	4 EACH	4	" " "	" " "
6" VALVE	4 EACH	4	" " "	" " "
8" SEWER	1430 LF.	1528.43	P.V.C.	B.R.S.
8" D.I.P. SEWER	806 LF.	783.65	CL. 62-D.I.P.	GRIFFIN PIPE
4" SEWER	742 LF.	809	P.V.C.	B.R.S.
MANHOLES	15 EACH	15	ATLANTIC	ATLANTIC
WM BLOW-OFF	1 EACH	1	ECLIPSE/KUPFERLE	BRS

NAME OF UTILITY CONTRACTOR:
SURVEY & DRAFTING DIVISION AS-BUILT DATE:
4" WATER D.I.P. 10 LF 9.21 CL. 62 D.I.P. GRIFFIN
* NOTE: BRS IS BELAIR ROAD SUPPLY

ENGINEER'S CERTIFICATE

I HEREBY CERTIFY THAT THIS PLAN FOR EROSION AND SEDIMENT CONTROL REPRESENTS A PRACTICAL AND WORKABLE PLAN BASED ON MY PERSONAL KNOWLEDGE OF THE SITE CONDITIONS AND THAT IT WAS PREPARED IN ACCORDANCE WITH THE REQUIREMENTS OF THE HOWARD SOIL CONSERVATION DISTRICT.

Paul W. Koebel 10/08/93
SIGNATURE OF ENGINEER DATE

DEVELOPER'S CERTIFICATE

"I/WE CERTIFY THAT ALL DEVELOPMENT AND CONSTRUCTION WILL BE DONE ACCORDING TO THIS PLAN OF DEVELOPMENT AND PLAN FOR EROSION AND SEDIMENT CONTROL AND THAT ALL RESPONSIBLE PERSONNEL INVOLVED IN THE CONSTRUCTION PROJECT WILL HAVE A CERTIFICATE OF ATTENDANCE AT A DEPARTMENT OF THE ENVIRONMENT APPROVED TRAINING PROGRAM FOR THE CONTROL OF SEDIMENT AND EROSION BEFORE BEGINNING THE PROJECT. I ALSO AUTHORIZE PERIODIC ON-SITE INSPECTION BY THE HOWARD SOIL CONSERVATION DISTRICT OR THEIR AUTHORIZED AGENTS, AS ARE DEEMED NECESSARY."

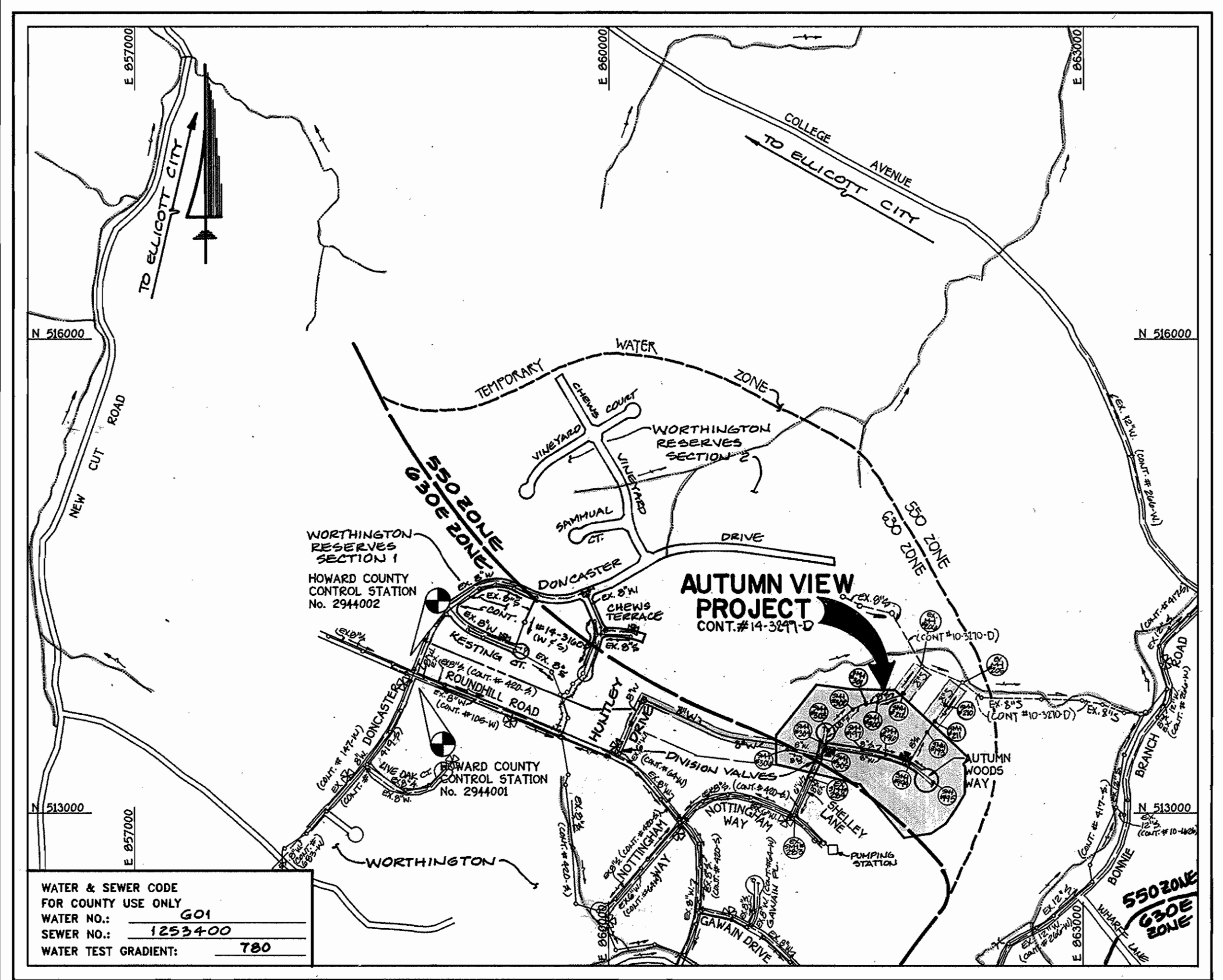
Bruce J. Daylen Pres. Bonnie Branch Corporation 1/5/94
SIGNATURE OF DEVELOPER DATE

THIS DEVELOPMENT IS APPROVED FOR EROSION AND SEDIMENT CONTROL BY HOWARD SOIL CONSERVATION DISTRICT.

APPROVED:
HOWARD SOIL CONSERVATION DISTRICT DATE

SEDIMENT CONTROL MEASURES FOR THIS CONTRACT WILL BE IMPLEMENTED IN ACCORDANCE WITH SECTION 219 OF HOWARD COUNTY DESIGN MANUAL & STANDARDS AND SPECIFICATIONS FOR SOIL EROSION AND SEDIMENT CONTROL IN DEVELOPING AREAS AND ALSO AS SHOWN ON THE GRADING AND SEDIMENT CONTROL PLAN F-93-77 REVIEWED FOR HOWARD COUNTY SOIL CONSERVATION DISTRICT AND MEETS TECHNICAL REQUIREMENTS.

U.S. SOIL CONSERVATION SERVICE DATE



WATER & SEWER CODE FOR COUNTY USE ONLY	G01
WATER NO.:	1253400
SEWER NO.:	780
WATER TEST GRADIENT:	780

VICINITY MAP

SCALE: 1"=600'

CONTRACT No. 14-3249-D
AUTUMN VIEW
LOTS 1 - 27

WATER AND SEWER MAIN EXTENSIONS
HOWARD COUNTY, MARYLAND
DEPARTMENT OF PUBLIC WORKS

INDEX OF DRAWINGS	
No.	DESCRIPTION
1	TITLE SHEET: VICINITY MAP; QUANTITIES
2	WATER & SEWER MAIN: PLAN
3	WATER MAIN: PLAN (OFF-SITE)
4	WATER & SEWER MAIN: PROFILES
5	WATER & SEWER MAIN: PROFILES
6	WATER MAIN: PROFILES (OFF-SITE)
7	SEWER MAIN: PROFILES
8	SEWER MAIN: PLAN & PROFILES
9	SEDIMENT & EROSION CONTROL: NOTES & DETAILS

PLAN REFERENCE NUMBERS:
P 92-18
F 93-77

CONTRACT NO. 14-3249-D
AUTUMN VIEW
LOTS 1 - 27
WATER AND SEWER EXTENSIONS
HOWARD COUNTY, MARYLAND

DEPARTMENT OF PUBLIC WORKS
HOWARD COUNTY, MARYLAND

James M. Lewis 1/27/94
DIRECTOR OF PUBLIC WORKS DATE

Paul W. Koebel 1/27/94
CHIEF, BUREAU OF ENGINEERING DATE

Robert W. Bauman 1-18-94
CHIEF, BUREAU OF UTILITIES DATE

John W. Bauman 1/27/94
CHIEF, LAND DEVELOPMENT DIVISION DATE

FISHER, COLLINS & CARTER, INC.

CIVIL ENGINEERING CONSULTANTS & LAND SURVEYORS
SUITE 100, 9171 BALTIMORE NATIONAL PIKE
ELLCOTT CITY, MARYLAND 21042
(410) 461-2856

Terrell A. Fisher
TERRELL A. FISHER

#9757

DES: M.V./M.J.M.
DRWN: M.V./M.J.M.
CHK: P.W.K.
DATE: 4/23/93

DATE:	4/23/93	BY:	NO.	REVISION	DATE
				REVISE QUANTITIES (8" (8" D.I.P.)	4/23/93

TITLE SHEET

600' SCALE MAP NO. 31 BLOCK NO. 3

AUTUMN VIEW
LOTS 1-27
CONTRACT NO. 14-3249-D
SECOND ELECTION DISTRICT
HOWARD COUNTY, MARYLAND

SCALE AS SHOWN

SHEET 1 OF 9

AS-BUILT 1/27/95

30417WS1.DWG

AS-BUILT 2/2/05

FOR CONTINUATION OF 8'S FROM MH#211 AND MH#212 SEE SHEET 8 OF 9

DEVELOPER'S CERTIFICATE

I/WE CERTIFY THAT ALL DEVELOPMENT AND CONSTRUCTION WILL BE DONE ACCORDING TO THIS PLAN OF DEVELOPMENT AND PLAN FOR EROSION AND SEDIMENT CONTROL AND THAT ALL RESPONSIBLE PERSONNEL INVOLVED IN THE CONSTRUCTION PROJECT WILL HAVE A CERTIFICATE OF ATTENDANCE AT A DEPARTMENT OF THE ENVIRONMENT APPROVED TRAINING PROGRAM FOR THE CONTROL OF SEDIMENT AND EROSION BEFORE BEGINNING THE PROJECT. I ALSO AUTHORIZE PERIODIC ON-SITE INSPECTION BY THE HOWARD SOIL CONSERVATION DISTRICT OF THEIR AUTHORIZED AGENTS, AS ARE DEEMED NECESSARY.

June Dwyer, for Bonnie Branch Corporation
SIGNATURE OF DEVELOPER
1/5/94
DATE

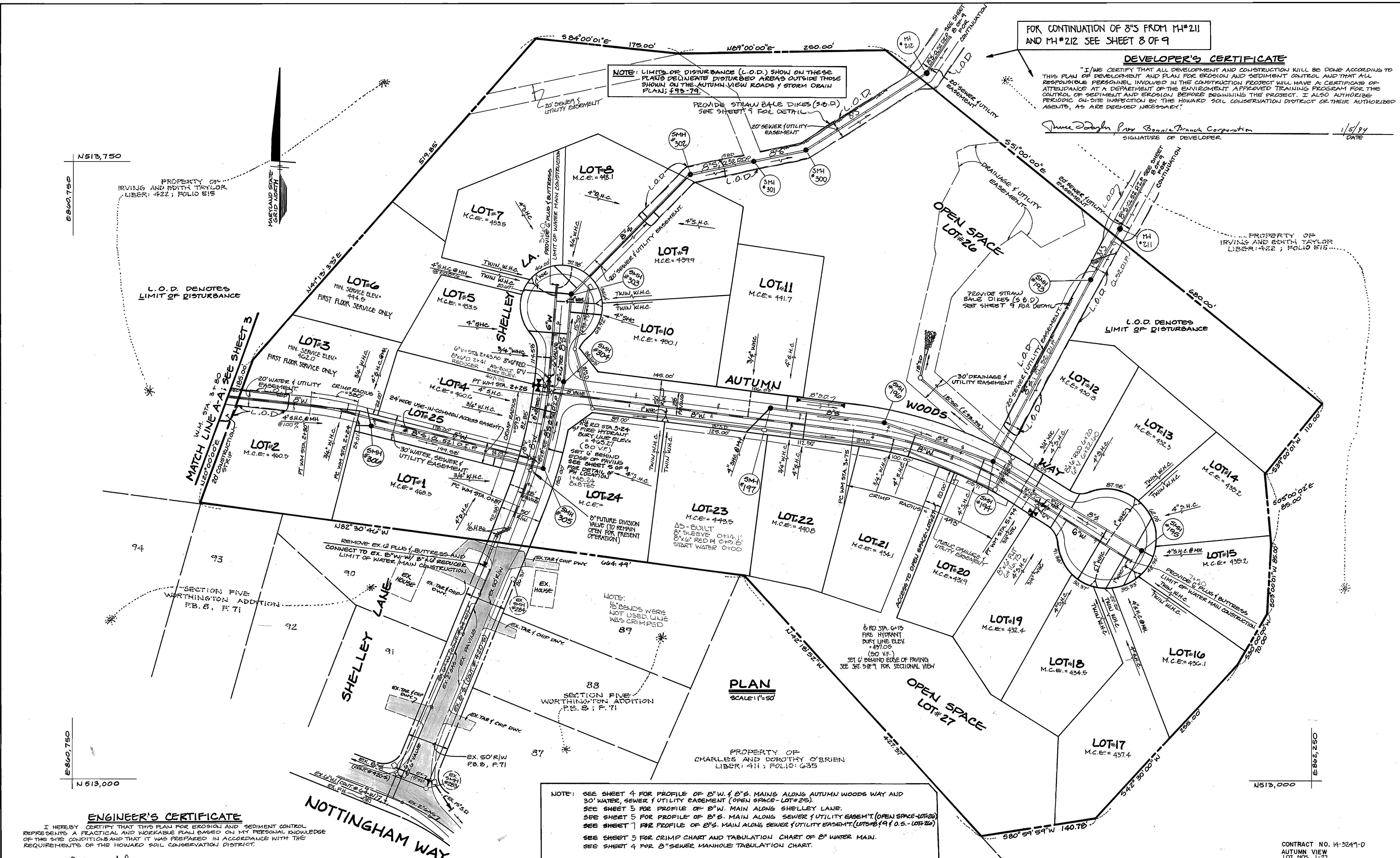
NOTE: LIMITS OF DISTURBANCE (L.O.D.) SHOWN ON THESE PLANS DELINEATE DISTURBED AREAS OUTSIDE THOSE SHOWN ON THE AUTUMN VIEW ROADS & STORM DRAIN PLAN; 493-79.

L.O.D. DENOTES LIMIT OF DISTURBANCE

L.O.D. DENOTES LIMIT OF DISTURBANCE

WS/2 AUTUMNVIEW

3249



PLAN
SCALE: 1"=50'

NOTE: SEE SHEET 4 FOR PROFILE OF 8" W & 8" S MAINS ALONG AUTUMN WOODS WAY AND 30' WATER, SEWER & UTILITY EASEMENT (OPEN SPACE-LOT#25).
SEE SHEET 5 FOR PROFILE OF 8" W MAIN ALONG SHELLEY LANE.
SEE SHEET 5 FOR PROFILE OF 8" S MAIN ALONG SEWER & UTILITY EASEMENT (OPEN SPACE-LOT#20).
SEE SHEET 7 FOR PROFILE OF 8" S MAIN ALONG SEWER & UTILITY EASEMENT (LOTS#6, 9 & 10 S-LOTS#26).
SEE SHEET 5 FOR CRIMP CHART AND TABULATION CHART OF 8" WATER MAIN.
SEE SHEET 4 FOR 8" SEWER MANHOLE TABULATION CHART.

ENGINEER'S CERTIFICATE

I HEREBY CERTIFY THAT THIS PLAN FOR EROSION AND SEDIMENT CONTROL REPRESENTS A PRACTICAL AND WORKABLE PLAN BASED ON MY PERSONAL KNOWLEDGE OF THE SITE CONDITIONS AND THAT IT WAS PREPARED IN ACCORDANCE WITH THE REQUIREMENTS OF THE HOWARD SOIL CONSERVATION DISTRICT.

Paul W. Kridel
SIGNATURE OF ENGINEER
10/08/93
DATE

DEPARTMENT OF PUBLIC WORKS
HOWARD COUNTY, MARYLAND
1/27/94
1-18-94

FISHER, COLLINS, AND CARTER, INC.
CONSULTING ENGINEERS AND LAND SURVEYORS
9171 BALTIMORE NATIONAL PIKE, SUITE 100
ELLCOTT CITY, MARYLAND 21043
(301) 461-2855

Table with columns: DES: M.J.M., DRN: M.S.V., CHK: P.W.K., DATE: 2/23/93, REVISION, DATE, 600' SCALE MAP NO. 31, BLOCK NO. 3

WATER AND SEWER MAINS
PLAN

AUTUMN VIEW
LOTS 1-27
CONTRACT NO. 14-3247-D
SECOND ELECTION DISTRICT
HOWARD COUNTY, MARYLAND
SCALE AS SHOWN
SHEET 2 OF 9

AS-BUILT 2/2/05

AS-BUILT 2/2/05

WS/3 AUTUMNVIEW

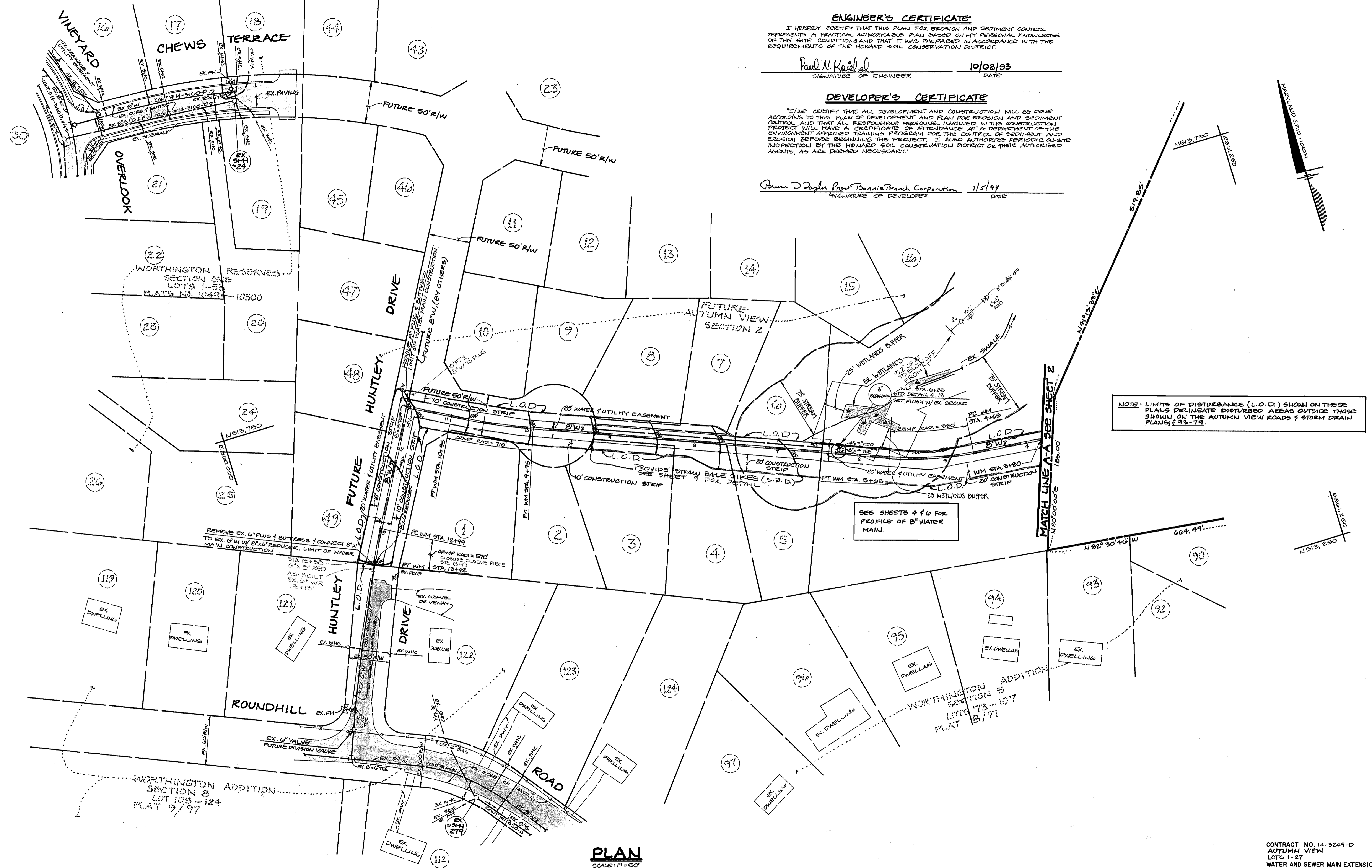
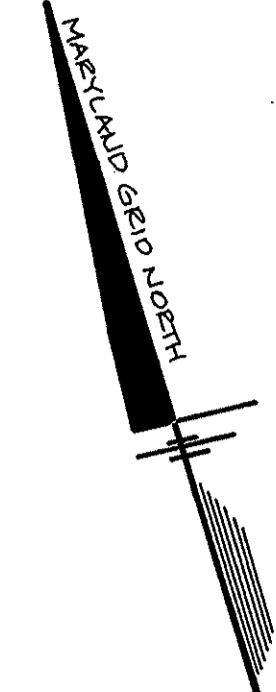
3249

ENGINEER'S CERTIFICATE
 I HEREBY CERTIFY THAT THIS PLAN FOR EROSION AND SEDIMENT CONTROL REPRESENTS A PRACTICAL AND WORKABLE PLAN BASED ON MY PERSONAL KNOWLEDGE OF THE SITE CONDITIONS AND THAT IT WAS PREPARED IN ACCORDANCE WITH THE REQUIREMENTS OF THE HOWARD SOIL CONSERVATION DISTRICT.

Paul W. Koebel
 SIGNATURE OF ENGINEER 10/08/93
 DATE

DEVELOPER'S CERTIFICATE
 I/WE CERTIFY THAT ALL DEVELOPMENT AND CONSTRUCTION WILL BE DONE ACCORDING TO THIS PLAN OF DEVELOPMENT AND PLAN FOR EROSION AND SEDIMENT CONTROL AND THAT ALL RESPONSIBLE PERSONNEL INVOLVED IN THE CONSTRUCTION PROJECT WILL HAVE A CERTIFICATE OF ATTENDANCE AT A DEPARTMENT OF THE ENVIRONMENT APPROVED TRAINING PROGRAM FOR THE CONTROL OF SEDIMENT AND EROSION BEFORE BEGINNING THE PROJECT. I ALSO AUTHORIZE PERIODIC ON-SITE INSPECTION BY THE HOWARD SOIL CONSERVATION DISTRICT OR THEIR AUTHORIZED AGENTS, AS ARE DEEMED NECESSARY.

Bruce J. Dugan from Bonnie Branch Corporation
 SIGNATURE OF DEVELOPER 1/5/94
 DATE



NOTE: LIMITS OF DISTURBANCE (L.O.D.) SHOWN ON THESE PLANS DELINEATE DISTURBED AREAS OUTSIDE THOSE SHOWN ON THE AUTUMN VIEW ROADS & STORM DRAIN PLANS; 93-79.

SEE SHEETS 4 & 6 FOR PROFILE OF 8" WATER MAIN.

PLAN
 SCALE: 1" = 50'

CONTRACT NO. 14-3249-D
 AUTUMN VIEW
 LOTS 1-27
 WATER AND SEWER MAIN EXTENSIONS
 HOWARD COUNTY, MARYLAND

DEPARTMENT OF PUBLIC WORKS
 HOWARD COUNTY, MARYLAND
 Director of Public Works: [Signature] 1/27/94
 Chief, Bureau of Engineering: [Signature] 1/27/94
 Chief, Bureau of Utilities: [Signature] 1-18-94
 Chief, Land Development Division: [Signature] 1/27/94

FISHER, COLLINS, AND CARTER, INC.
 #9757
 CONSULTING ENGINEERS AND LAND SURVEYORS
 9171 BALTIMORE NATIONAL PIKE
 SUITE 100
 ELLICOTT CITY, MARYLAND 21043
 (410) 461-2855
 [Signature]
 TERRELL A. FISHER

DES: M.S.V.					
DRN: M.S.V.					
CHK: P.W.K.					
DATE:	BY	NO.	REVISION	DATE	

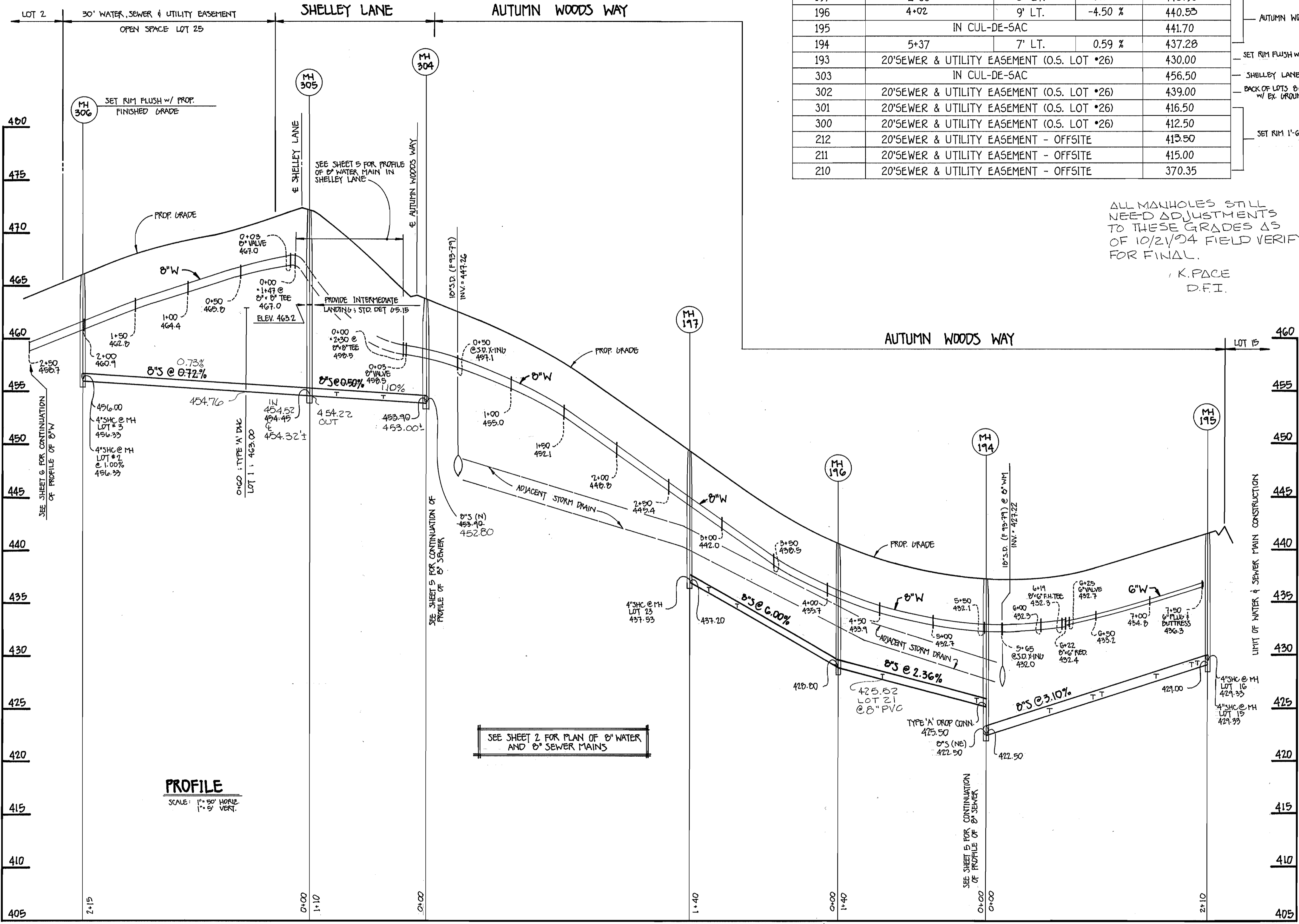
WATER MAIN PLAN
 600' SCALE MAP NO. 31 BLOCK NO. 3

AUTUMN VIEW
 LOTS 1-27
 CONTRACT NO. 14-3249-D
 SECOND ELECTION DISTRICT
 HOWARD COUNTY, MARYLAND
 SCALE AS SHOWN
 SHEET 3 OF 9

AS-BUILT 2/2/05

AS-BUILT 2/21/95

ws/4 Autumn View (lots 1-27)
3249



MANHOLE TABULATION CHART				
MH NO.	RD. STATION	DISTANCE	SLOPE	RIM ELEV.
306	30' WATER, SEWER & UTILITY EASEMENT (O.S. LOT #25)			466.00
305	4+25	7' RT.	-7.78 %	472.45
304	5+32	10' RT.	-9.00 %	463.03
197	2+63	8' LT.	-7.00 %	448.96
196	4+02	9' LT.	-4.50 %	440.53
195	IN CUL-DE-SAC			441.70
194	5+37	7' LT.	0.59 %	437.28
193	20' SEWER & UTILITY EASEMENT (O.S. LOT #26)			430.00
303	IN CUL-DE-SAC			456.50
302	20' SEWER & UTILITY EASEMENT (O.S. LOT #26)			439.00
301	20' SEWER & UTILITY EASEMENT (O.S. LOT #26)			416.50
300	20' SEWER & UTILITY EASEMENT (O.S. LOT #26)			412.50
212	20' SEWER & UTILITY EASEMENT - OFFSITE			413.50
211	20' SEWER & UTILITY EASEMENT - OFFSITE			415.00
210	20' SEWER & UTILITY EASEMENT - OFFSITE			370.35

ALL MANHOLES STILL NEED ADJUSTMENTS TO THESE GRADES AS OF 10/21/04 FIELD VERIFY FOR FINAL.

K. PACE
D.F.I.

DEVELOPER'S CERTIFICATION

I/WE HEREBY CERTIFY THAT ALL DEVELOPMENT AND CONSTRUCTION WILL BE DONE ACCORDING TO THIS PLAN OF DEVELOPMENT AND PLAN FOR EROSION AND SEDIMENT CONTROL AND THAT ALL RESPONSIBLE PERSONNEL INVOLVED IN THE CONSTRUCTION PROJECT WILL HAVE A CERTIFICATE OF ATTENDANCE AT A DEPARTMENT OF THE ENVIRONMENT APPROVED TRAINING PROGRAM FOR THE SEDIMENT AND EROSION BEFORE BEGINNING THE PROJECT. I ALSO AUTHORIZE PERIODIC ON-SITE INSPECTION BY THE HOWARD SOIL CONSERVATION DISTRICT OR THEIR AUTHORIZED AGENTS, AS ARE DEEMED NECESSARY.

James Douglas Pres. Bonnie Branch Corporation 5/25/94
SIGNATURE OF DEVELOPER DATE

ENGINEER'S CERTIFICATION

I HEREBY CERTIFY THAT THIS PLAN FOR EROSION AND SEDIMENT CONTROL REPRESENTS A PRACTICAL AND WORKABLE PLAN BASED ON MY PERSONAL KNOWLEDGE OF THE SITE CONDITIONS AND THAT IT WAS PREPARED IN ACCORDANCE WITH THE REQUIREMENTS OF THE HOWARD SOIL CONSERVATION DISTRICT.

Paul W. Kadel May 24, 1994
SIGNATURE OF ENGINEER DATE

S.H.C. INVERT ELEVATIONS @ PROPERTY LINE

STATION	LOT	ELEVATION
MH • 194 TO MH • 195 4" PVC INSTALLED		
0+60 LT.	20' 12'	424.89 423.15
1+00 RT.	19 34'	426.41
1+10 LT.	13 22'	426.48
1+60 RT.	18 70'	429.03
1+95 RT.	17 63'	429.98
2+00 LT.	14 40'	429.67
• MH 195 LT.	15 18' L.F.	429.63
• MH 195 RT.	16 47' L.F.	430.25
MH • 194 TO MH • 196		
* 0+10 LT. & O.L.T.	20 31'	423.15 426.51 MH 194
1+00 LT.	21 31'	420.61 426.14
MH • 196 TO MH • 197		
0+95 LT.	22 36'	435.31 435.22
1+20 RT.	11 16'	436.53 436.32
• MH 197 LT.	23 41'	438.37 438.35
MH • 304 TO MH • 305		
0+40 RT.	1 20'	454.91 454.00
0+85 LT.	24 25'	454.86 454.44
MH • 305 TO MH • 306		
0+60 LT.	1 DHC 13'	463.20 463.26
• MH 306 LT.	2 (•1.00%) 20'	456.52 456.53
• MH 306 RT.	3 (FF ONLY) 23'	456.81 456.79
MH • 302 TO MH • 303		
0+65 LT.	9 12'	435.05 434.22
0+75 RT.	8 DHC 12'	443.20 443.04
1+95 RT.	7 DHC 39'	445.80 445.58
• MH 303 RT.	6 (FF ONLY) • 1.00% 50'	439.63 438.65
MH • 303 TO MH • 304		
0+23 LT.	10 41'	444.70 443.69
0+50 RT.	5 47'	448.16 447.07

* MOVED 4" SHC TO 194-195 1.0' FROM 194 46 ON 194-195 51.05

THIS SHEET 4 OF 9 SUPERSEDES ORIGINAL SHEET 4 OF 9 AS APPROVED BY THE DEPT. OF PUBLIC WORKS ON 02-01-94.

DEPARTMENT OF PUBLIC WORKS
HOWARD COUNTY, MARYLAND

James P. Lewis Director of Public Works
Edward Butler Chief, Bureau of Engineering
Robert S. Senior Chief, Bureau of Utilities

DATE: 6-27-94

FISHER, COLLINS & CARTER, INC.
CIVIL ENGINEERING CONSULTANTS & LAND SURVEYORS
SUITE 100, 9171 BALTIMORE NATIONAL PIKE
ELICOTT CITY, MARYLAND 21042
(301) 461-2855

STATE OF MARYLAND
REGISTERED PROFESSIONAL ENGINEER
TERRELL A. FISHER

DES: M.J.M.	
DRWN: M.J.M./J.M.M.	
CHK: P.W.K.	
DATE:	
BY NO.	REVISION

WATER AND SEWER MAINS PROFILES

600' SCALE MAP NO. 31 BLOCK NO. 3

AUTUMN VIEW
LOTS 1-27
CONTRACT NO. 14-3249-D
SECOND ELECTION DISTRICT
HOWARD COUNTY, MARYLAND

SCALE AS SHOWN
SHEET 4 OF 9
UTSHEET.DWG

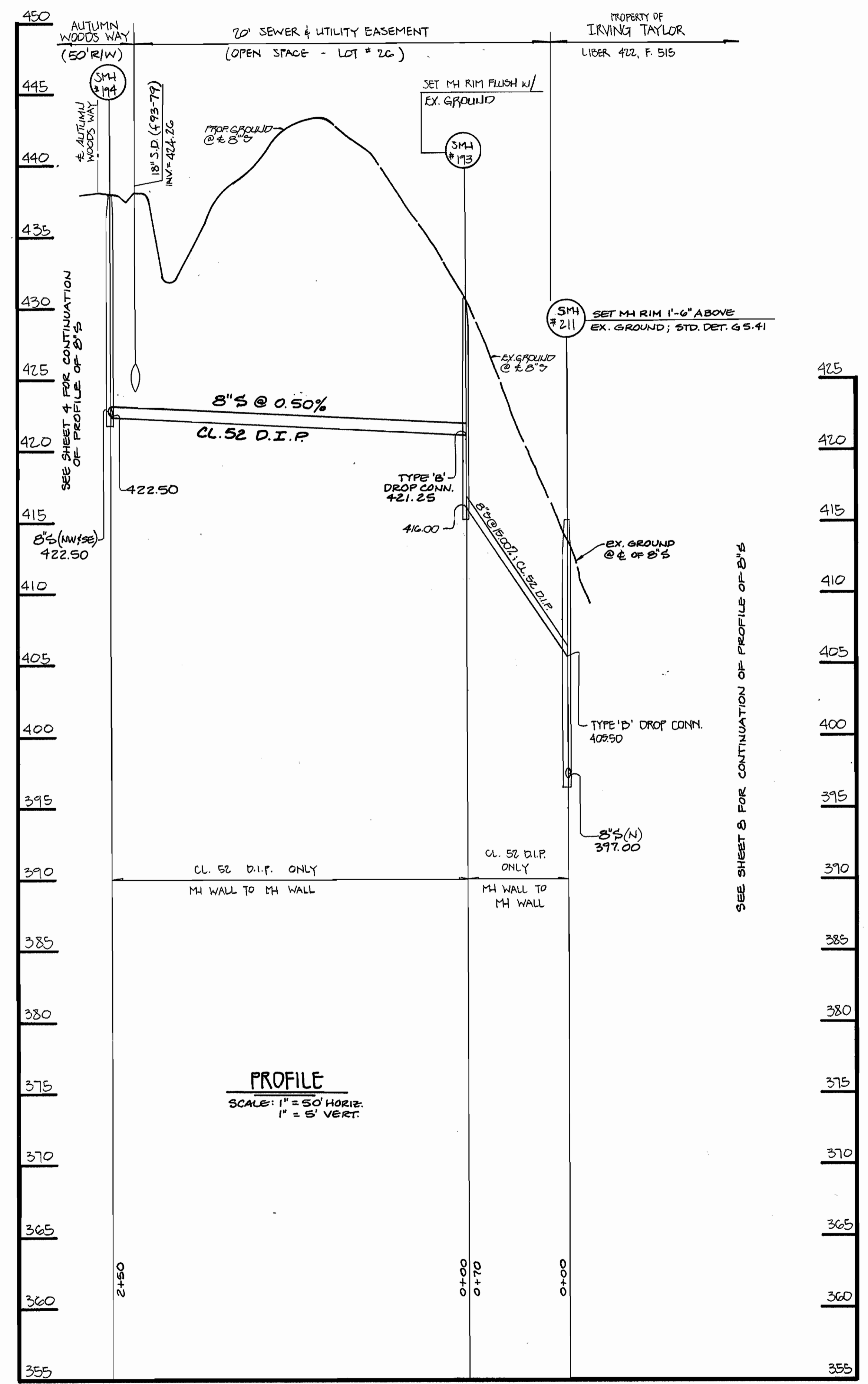
AS-BUILT 2/21/95

AS-BUILT 2/2/95

WS/S AUTUMN VIEW

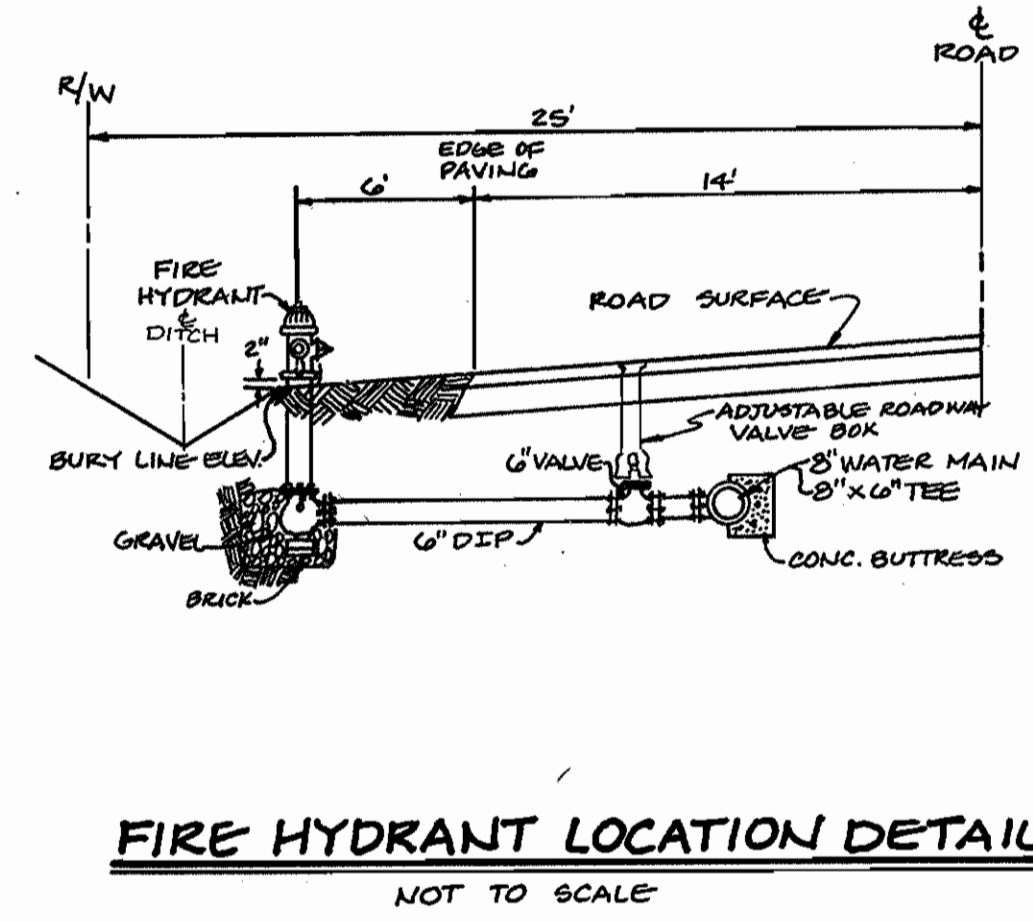
3249

SEE SHEET 2 FOR PLAN VIEW OF 8" SEWER



RD. STATION	APPURTENANCE	DISTANCE
2+89	8" x 6" REDUCER	19' LT.
3+30	1/8" H.B.	17' LT.
3+42	1/8" H.B.	7' LT.
4+31	8" x 8" TEE	7' LT.
4+31	8" VALVE	10' LT.
5+17	8" x 8" TEE	7' LT.
5+17	8" VALVE	4' LT.
5+24	8" x 6" F.H. TEE	7' LT.
5+27	8" x 6" REDUCER	7' LT.
5+30	6" VALVE	7' LT.
4+17	FUTURE DIVISION VALVE	7' LT.
5+13	8" x 6" F.H. TEE	7' RT.
5+17	8" x 6" REDUCER	7' RT.
5+20	6" VALVE	7' RT.

W. STATION	APPURTENANCE	RADIUS
0+87	PC: BEGIN CRIMP	593'
2+25	PT: END CRIMP	
3+75	PC: BEGIN CRIMP	493'
5+94	PT: END CRIMP	
2+24	PC: BEGIN CRIMP	380'
2+80	PT: END CRIMP	
4+65	PC: BEGIN CRIMP	380'
5+65	PT: END CRIMP	
9+95	PC: BEGIN CRIMP	710'
10+95	PT: END CRIMP	
12+97	PC: BEGIN CRIMP	570'
13+42	PT: END CRIMP	



ENGINEER'S CERTIFICATE

I HEREBY CERTIFY THAT THIS PLAN FOR EROSION AND SEDIMENT CONTROL REPRESENTS A PRACTICAL AND WORKABLE PLAN BASED ON MY PERSONAL KNOWLEDGE OF THE SITE CONDITIONS AND THAT IT WAS PREPARED IN ACCORDANCE WITH THE REQUIREMENTS OF THE HOWARD SOIL CONSERVATION DISTRICT.

Paul W. Koebel
SIGNATURE OF ENGINEER

10/08/93
DATE

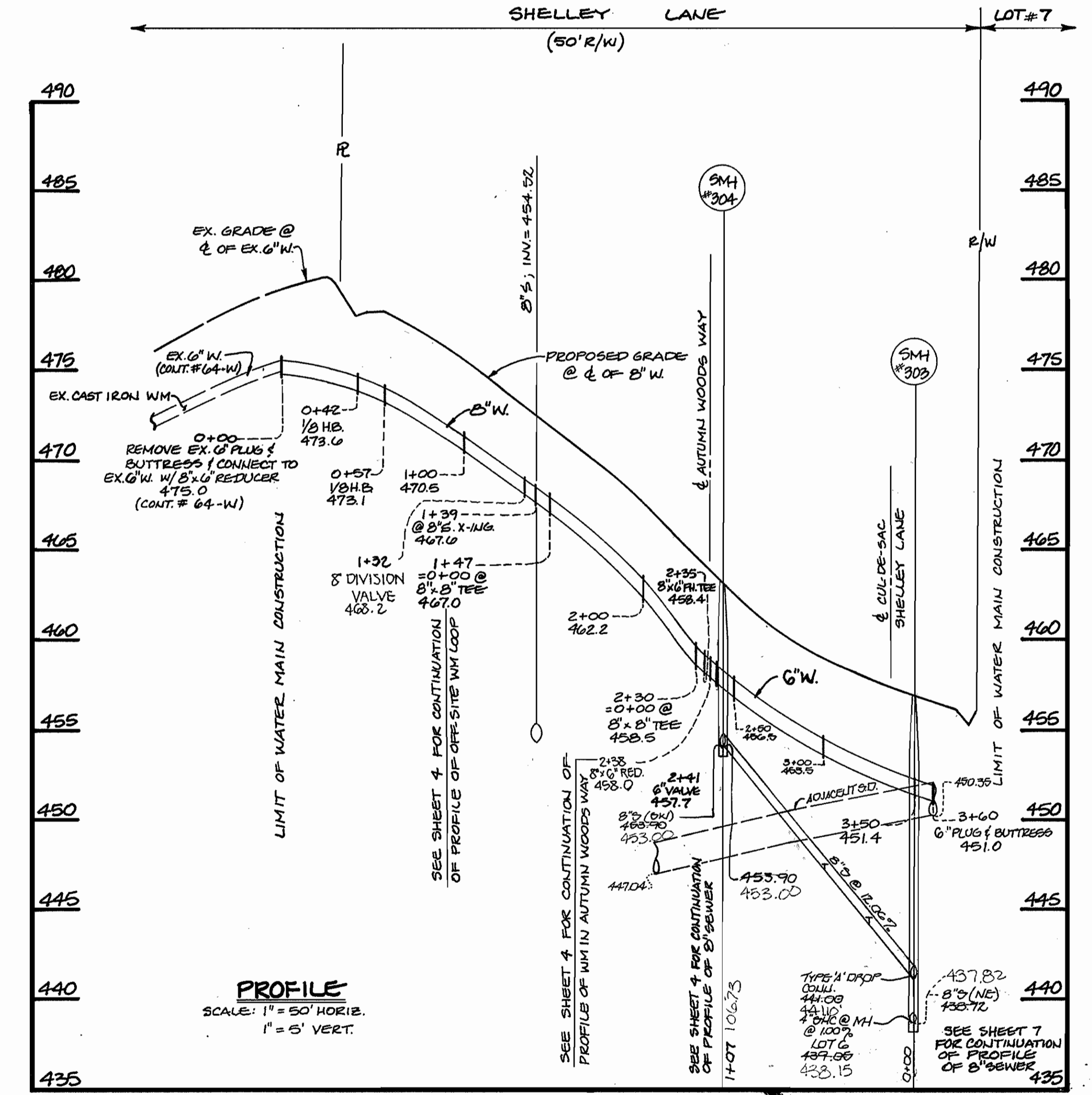
DEVELOPER'S CERTIFICATE

"I/WE CERTIFY THAT ALL DEVELOPMENT AND CONSTRUCTION WILL BE DONE ACCORDING TO THIS PLAN OF DEVELOPMENT AND PLAN FOR EROSION AND SEDIMENT CONTROL AND THAT ALL RESPONSIBLE PERSONNEL INVOLVED IN THE CONSTRUCTION PROJECT WILL HAVE A CERTIFICATE OF ATTENDANCE AT A DEPARTMENT OF THE ENVIRONMENT APPROVED TRAINING PROGRAM FOR THE CONTROL OF SEDIMENT AND EROSION BEFORE BEGINNING THE PROJECT. I ALSO AUTHORIZE PERIODIC ON-SITE INSPECTION BY THE HOWARD SOIL CONSERVATION DISTRICT OR THEIR AUTHORIZED AGENTS, AS ARE DEEMED NECESSARY."

Bonnie J. Taylor
SIGNATURE OF DEVELOPER

1/1/94
DATE

SEE SHEET 2 FOR PLAN OF 8" WATER MAIN



PROFILE
SCALE: 1" = 50' HORIZ.
1" = 5' VERT.

DEPARTMENT OF PUBLIC WORKS
HOWARD COUNTY, MARYLAND

James P. Shaw 2/1/94
DIRECTOR OF PUBLIC WORKS
Robert H. Benner 1-18-94
CHIEF, BUREAU OF UTILITIES

FISHER, COLLINS, AND CARTER, INC.
CONSULTING ENGINEERS AND LAND SURVEYORS
9171 BALTIMORE NATIONAL PIKE
SUITE 100
ELLCOTT CITY, MARYLAND 21043
(301) 461-2855

#9757
TERRELL A. FISHER

DES: M.S.V.	
DRN: M.S.V.	
CHK: P.W.K.	
DATE: 2/23/95	
BY: [Signature]	
NO.:	
REVISION:	
DATE:	

WATER AND SEWER MAINS
PROFILES

600' SCALE MAP NO. 31 BLOCK NO. 3

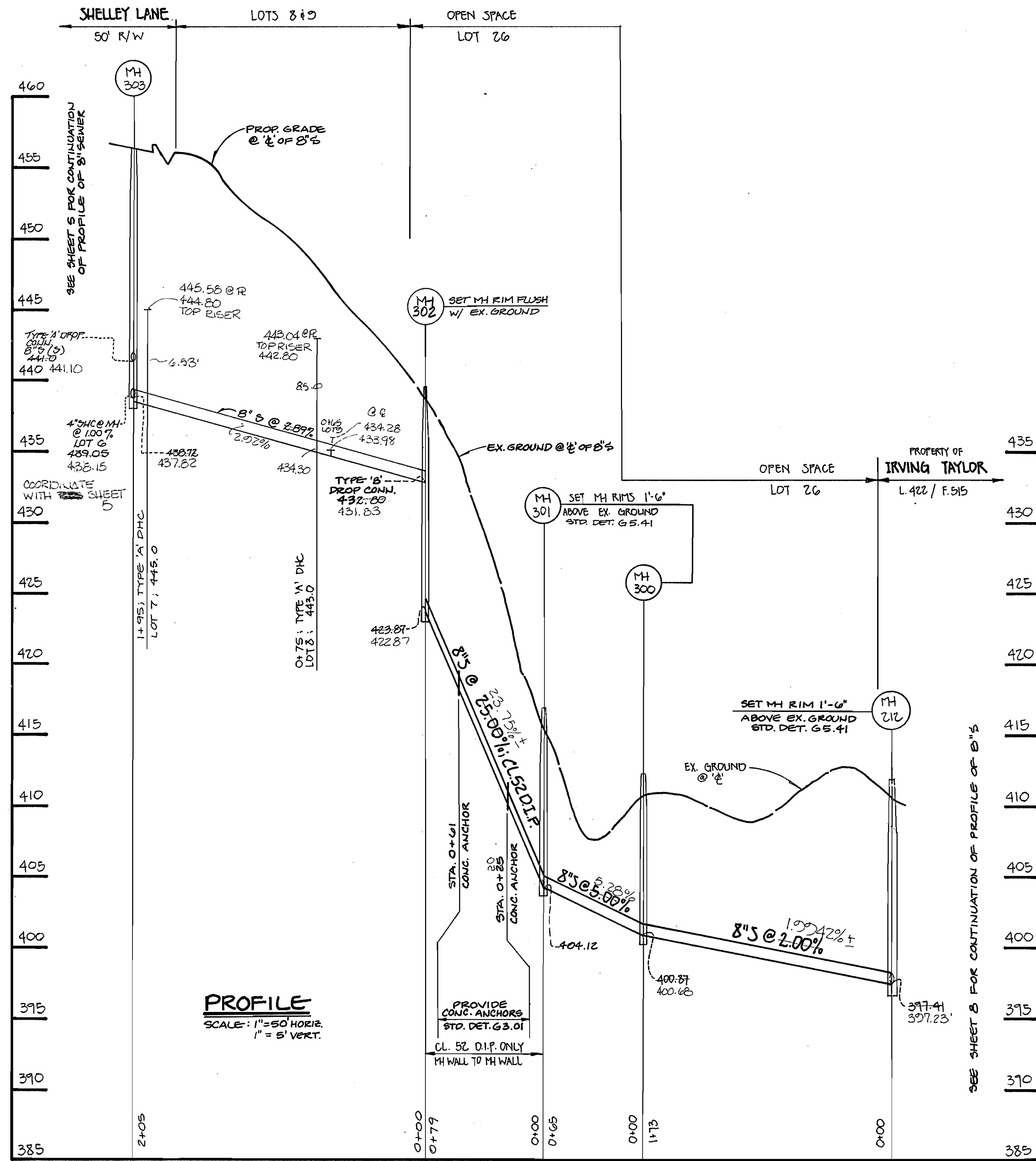
AUTUMN VIEW
LOTS 1-27
CONTRACT NO. 14-3249-D
SECOND ELECTION DISTRICT
HOWARD COUNTY, MARYLAND

SCALE AS SHOWN
SHEET 5 OF 9

CONTRACT NO. 14-3249-D
AUTUMN VIEW
LOT NOS. 1-27
WATER AND SEWER MAIN EXTENSIONS
HOWARD COUNTY, MARYLAND

AS-BUILT 2/2/95

SEE SHEET 2 FOR PLAN VIEW OF 8" SEWER MAIN



PROFILE
SCALE: 1" = 50' HORIZ.
1" = 5' VERT.

ENGINEER'S CERTIFICATE

I HEREBY CERTIFY THAT THIS PLAN FOR EROSION AND SEDIMENT CONTROL REPRESENTS A PRACTICAL AND WORKABLE PLAN BASED ON MY PERSONAL KNOWLEDGE OF THE SITE CONDITIONS AND THAT IT WAS PREPARED IN ACCORDANCE WITH THE REQUIREMENTS OF THE HOWARD SOIL CONSERVATION DISTRICT.

Paul W. Keid
SIGNATURE OF ENGINEER

10/08/93
DATE

DEVELOPER'S CERTIFICATE

I HEREBY CERTIFY THAT ALL DEVELOPMENT AND CONSTRUCTION WILL BE DONE ACCORDING TO THIS PLAN OF DEVELOPMENT AND PLAN FOR EROSION AND SEDIMENT CONTROL AND THAT ALL RESPONSIBLE PERSONNEL INVOLVED IN THE CONSTRUCTION PROJECT WILL HAVE A CERTIFICATE OF ATTENDANCE AT A DEPARTMENT OF THE ENVIRONMENT APPROVED TRAINING PROGRAM FOR THE CONTROL OF SEDIMENT AND EROSION BEFORE BEGINNING THE PROJECT. I ALSO AUTHORIZE PERIODIC ON-SITE INSPECTION BY THE HOWARD SOIL CONSERVATION DISTRICT OR THEIR AUTHORIZED AGENTS, AS ARE DEEMED NECESSARY.

Bruce D Taylor Pro/Bonnie Branch Corporation
SIGNATURE OF DEVELOPER

1/5/94
DATE

CONTRACT NO. 14-3241-D
AUTUMN VIEW
LOT NOS. 1-27
WATER AND SEWER MAIN EXTENSIONS
HOWARD COUNTY, MARYLAND

DEPARTMENT OF PUBLIC WORKS
HOWARD COUNTY, MARYLAND

James J. Lewis 2/11/94
DIRECTOR OF PUBLIC WORKS DATE

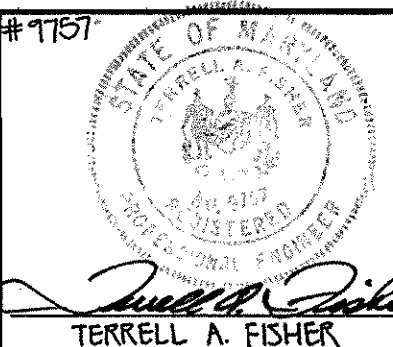
Robert J. Bennett 1-18-94
CHIEF, BUREAU OF UTILITIES DATE

Paul W. Keid 1/27/94
CHIEF, BUREAU OF ENGINEERING DATE

Allen D. Bennett 1/27/94
CHIEF, LAND DEVELOPMENT DIVISION DATE

FISHER, COLLINS, AND CARTER, INC.
CONSULTING ENGINEERS AND LAND SURVEYORS
7171 BALTIMORE NATIONAL PIKE, SUITE 100
ELLCOTT CITY, MARYLAND 21043

Terrell A. Fisher
TERRELL A. FISHER



DES: MJM					
DRN: MJM					
CHK: PFK					
DATE: 2/23/93	BY	NO.	REVISION	DATE	

FOC		REVISION	DATE
BY	NO.	REVISION	DATE

AUTUMN VIEW
LOTS 1-27
CONTRACT NO. 14-3241-D
SECOND ELECTION DISTRICT
HOWARD COUNTY, MARYLAND

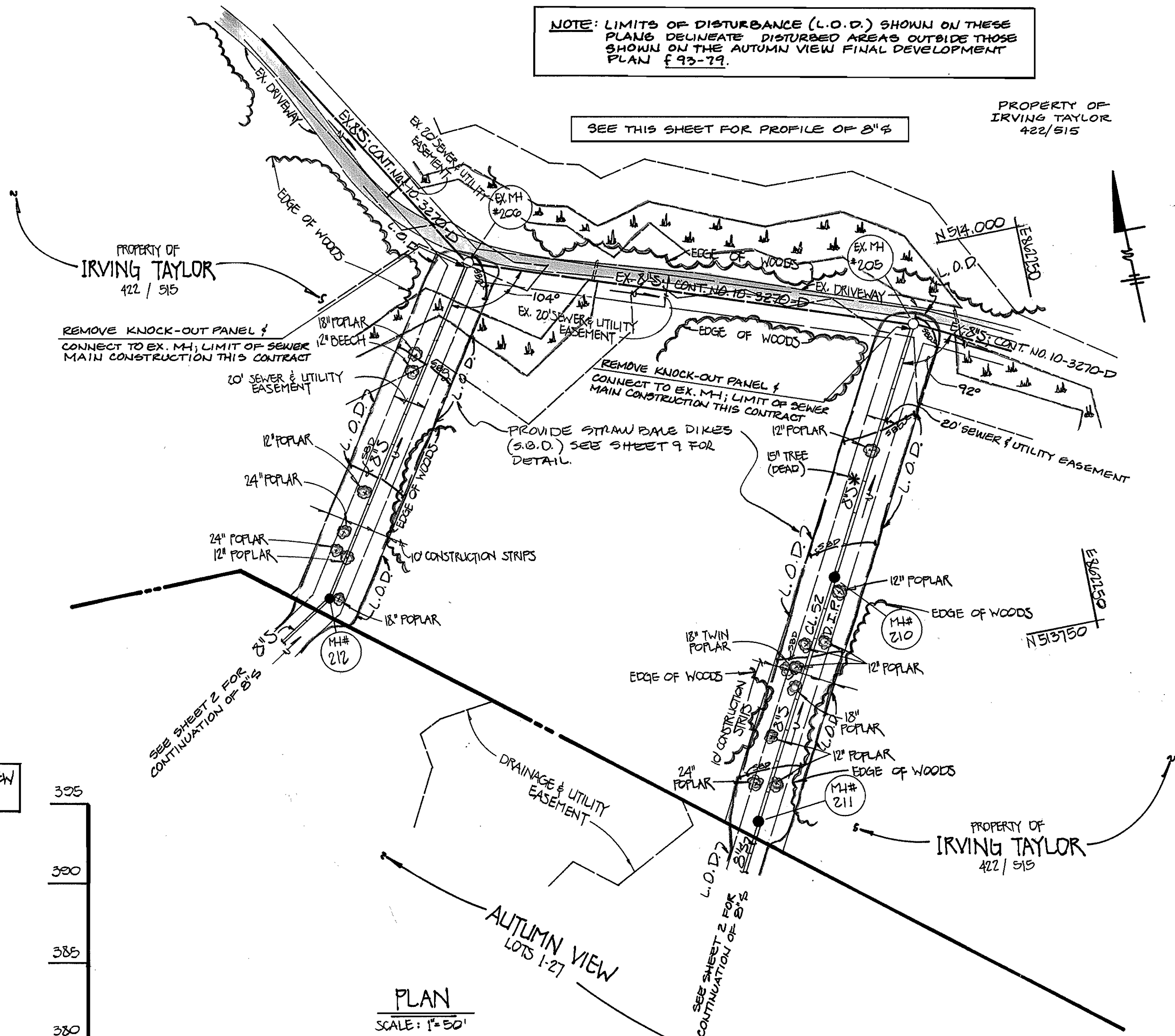
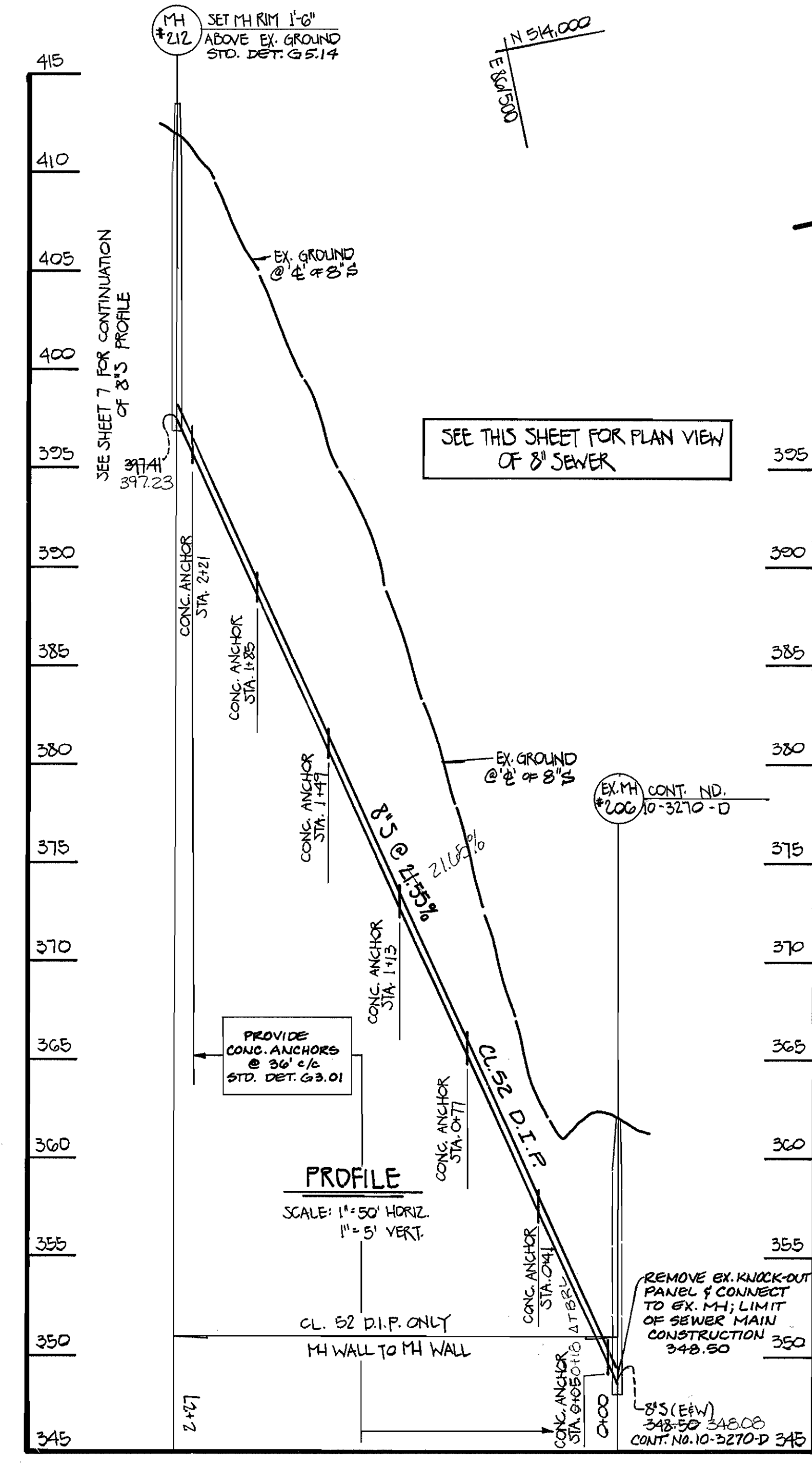
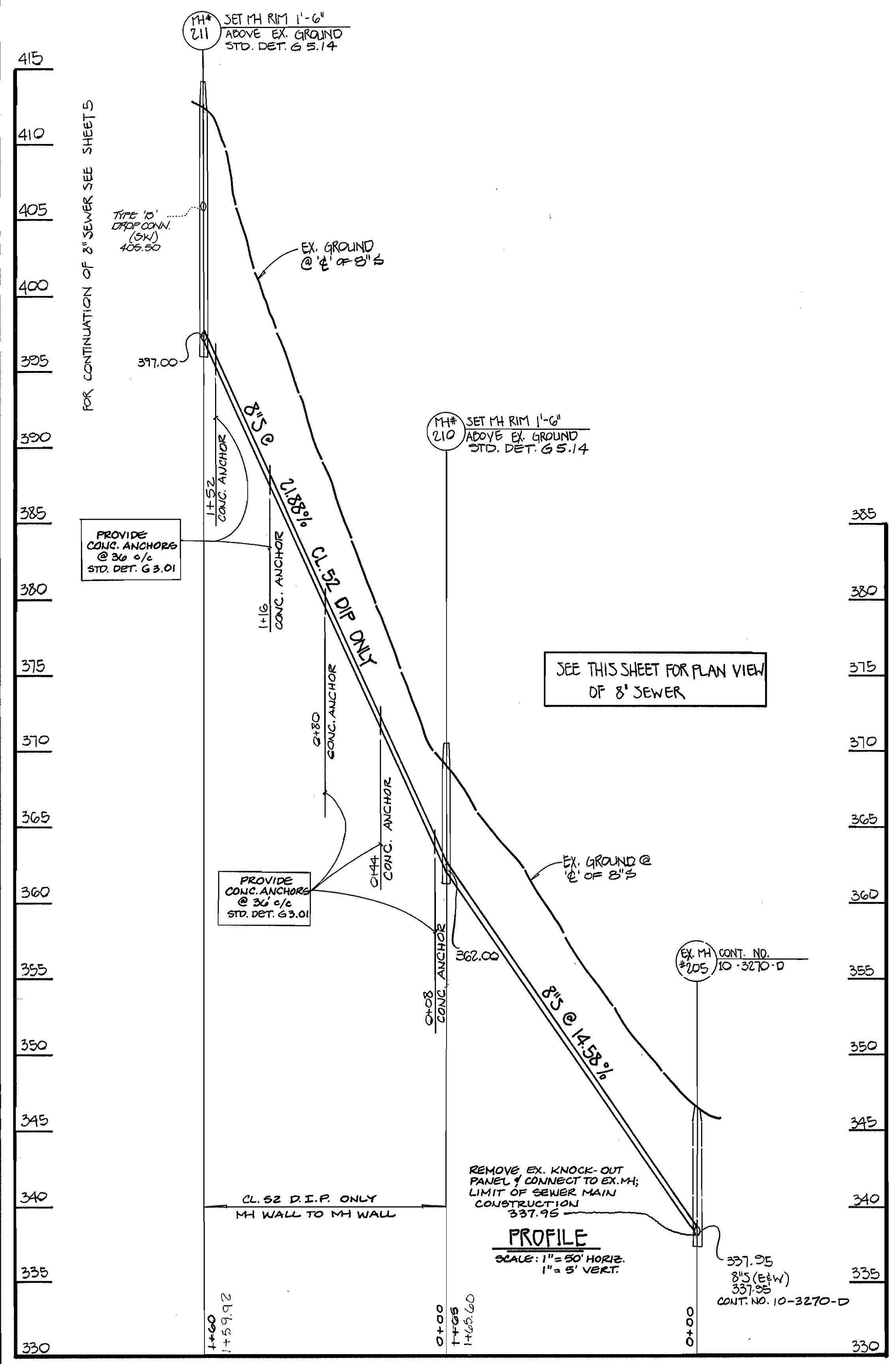
SCALE AS SHOWN

SHEET 7 OF 9

AS-BUILT 2/2/95

3249 WS/8 Autumn View

3249



ENGINEER'S CERTIFICATE

I HEREBY CERTIFY THAT THIS PLAN FOR EROSION AND SEDIMENT CONTROL REPRESENTS A PRACTICAL AND WORKABLE PLAN BASED ON MY PERSONAL KNOWLEDGE OF THE SITE CONDITIONS AND THAT IT WAS PREPARED IN ACCORDANCE WITH THE REQUIREMENTS OF THE HOWARD SOIL CONSERVATION DISTRICT.

Paul W. Koebel 10/08/93
SIGNATURE OF ENGINEER DATE

DEVELOPER'S CERTIFICATE

"I/WE CERTIFY THAT ALL DEVELOPMENT AND CONSTRUCTION WILL BE DONE ACCORDING TO THIS PLAN OF DEVELOPMENT AND PLAN FOR EROSION AND SEDIMENT CONTROL AND THAT ALL RESPONSIBLE PERSONNEL INVOLVED IN THE CONSTRUCTION PROJECT WILL HAVE A CERTIFICATE OF ATTENDANCE AT A DEPARTMENT OF THE ENVIRONMENT, APPROVED TRAINING PROGRAM FOR THE CONTROL OF SEDIMENT AND EROSION BEFORE BEGINNING THE PROJECT. I ALSO AUTHORIZE PERIODIC ON-SITE INSPECTION BY THE HOWARD SOIL CONSERVATION DISTRICT OR THEIR AUTHORIZED AGENTS, AS ARE DEEMED NECESSARY."

Prime Design, Inc. / Prime Design Corporation 1/31/94
SIGNATURE OF DEVELOPER DATE

DEPARTMENT OF PUBLIC WORKS
HOWARD COUNTY, MARYLAND

Carroll J. Lewis 2/1/94
DIRECTOR OF PUBLIC WORKS DATE

Paul W. Koebel 1/27/94
CHIEF, BUREAU OF ENGINEERING DATE

Robert S. Berman 1-18-94
CHIEF, BUREAU OF UTILITIES DATE

Michael J. Summers 1/27/94
CHIEF, LAND DEVELOPMENT DIVISION DATE

FISHER, COLLINS, AND CARTER, INC. #9751

CONSULTING ENGINEERS AND LAND SURVEYORS
9171 BALTIMORE NATIONAL PIKE, SUITE 100
ELLCOTT CITY, MARYLAND 21043
(410) 461-2855

TERRELL A. FISHER

DES: MJM			
DRN: MJM			
CHK: PMK			
DATE:	FCC	ADD DROP COLLECTION @ MH 211	6/22/94
	BY	NO.	REVISION

SEWER MAINS
PLAN & PROFILE

600' SCALE MAP NO. 31 BLOCK NO. 3

AUTUMN VIEW
LOTS 1-27
CONTRACT NO. 14-3249-D
SECOND ELECTION DISTRICT
HOWARD COUNTY, MARYLAND

SCALE AS SHOWN
SHEET 8 OF 9

AS-BUILT 2/2/95

- EROSION AND SEDIMENT CONTROL NOTES:**
- ALL SEDIMENT CONTROL OPERATIONS ARE TO BE DONE IN ACCORDANCE WITH SECTION 219 OF THE HOWARD COUNTY DESIGN MANUAL AND THE STANDARDS AND SPECIFICATIONS FOR SEDIMENT CONTROL IN DEVELOPING AREAS.
 - ALL EROSION AND SEDIMENT CONTROL DEVICES SHALL BE INSTALLED AS THE FIRST ORDER OF BUSINESS.
 - ALL EXCAVATED MATERIALS SHALL BE STOCKPILED ON THE UPGRADE SIDE OF THE SEWER MAIN TRENCH.
 - IMMEDIATELY FOLLOWING BACKFILL OF THE SEWER MAIN TRENCH, ALL DISTURBED AREAS ARE TO BE STABILIZED IN ACCORDANCE WITH THE PERMANENT STABILIZATION AND SEEDING NOTES SHOWN ON THIS SHEET.
 - THROUGHOUT THE PROJECT, THE CONTRACTOR SHALL REGULARLY INSPECT ALL SEDIMENT CONTROL DEVICES AND PROVIDE ALL NECESSARY MAINTENANCE TO INSURE THAT ALL DEVICES ARE IN OPERATIVE CONDITION.
 - ALL SEDIMENT CONTROL FACILITIES SHALL REMAIN IN PLACE UNTIL PERMISSION FOR THEIR REMOVAL HAS BEEN OBTAINED FROM THE HOWARD COUNTY SEDIMENT CONTROL INSPECTOR.

NOTE: THE LENGTH OF OPEN SEWER MAIN TRENCH SHALL BE LIMITED TO THREE (3) PIPE LENGTHS OR THAT WHICH WILL BE BACKFILLED AND STABILIZED WITHIN ONE WORKING DAY, WHICHEVER IS SHORTER.

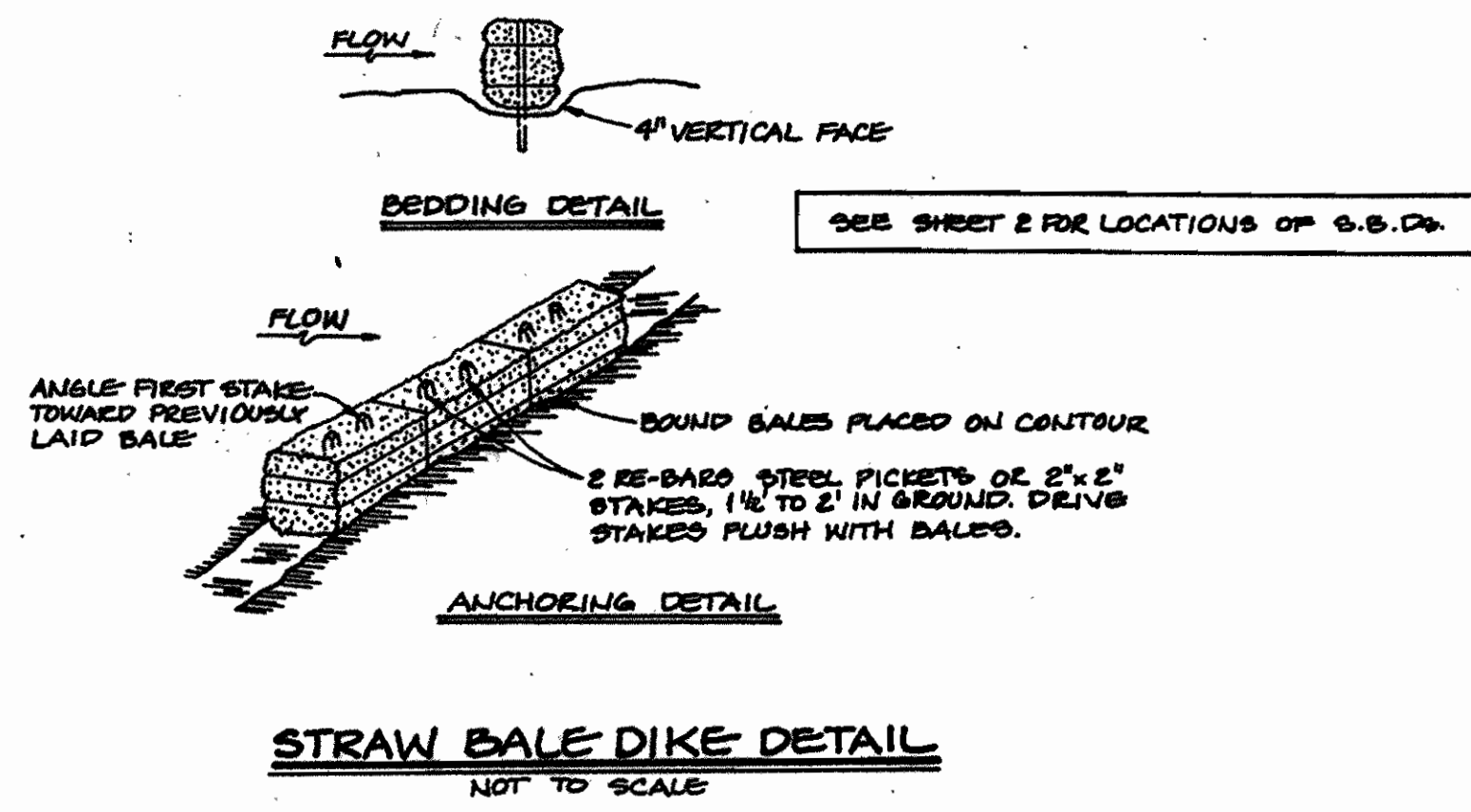
- A MINIMUM OF 24 HOURS NOTICE MUST BE GIVEN TO THE HOWARD COUNTY OFFICE OF INSPECTIONS AND PERMITS PRIOR TO THE START OF ANY CONSTRUCTION (992-2437).
- ALL VEGETATIVE AND STRUCTURAL PRACTICES ARE TO BE INSTALLED ACCORDING TO THE PROVISIONS OF THIS PLAN AND ARE TO BE IN CONFORMANCE WITH THE 1983 MARYLAND STANDARDS AND SPECIFICATIONS FOR SOIL EROSION AND SEDIMENT CONTROL.
- FOLLOWING INITIAL SOIL DISTURBANCE OR REDISTURBANCE, PERMANENT OR TEMPORARY STABILIZATION SHALL BE COMPLETED WITHIN: a) 7 DAYS FOR ALL DISTURBED AREAS, b) 14 DAYS FOR ALL OTHER DISTURBED OR GRADED AREAS ON THE PROJECT SITE.
- ALL SEDIMENT TRAPS/BASINS SHOWN MUST BE FENCED AND WARNING SIGNS POSTED AROUND THEIR PERIMETER IN ACCORDANCE WITH VOL. 1, CHAPTER 12, OF THE HOWARD COUNTY DESIGN MANUAL, STORM DRAINAGE.
- ALL DISTURBED AREAS MUST BE STABILIZED WITHIN THE TIME PERIOD SPECIFIED ABOVE IN ACCORDANCE WITH THE 1983 MARYLAND STANDARDS AND SPECIFICATIONS FOR SOIL EROSION AND SEDIMENT CONTROL FOR PERMANENT SEEDINGS (SEC. 51) SOIL (SEC. 54), TEMPORARY SEEDING (SEC. 50) AND MULCHING (SEC. 52). TEMPORARY STABILIZATION WITH MULCHING ALONE CAN ONLY BE DONE WHEN RECOMMENDED SEEDING DATES DO NOT ALLOW FOR PROPER GERMINATION AND ESTABLISHMENT OF GRASSES.
- ALL SEDIMENT CONTROL STRUCTURES ARE TO REMAIN IN PLACE AND ARE TO BE MAINTAINED IN OPERATIVE CONDITION UNTIL PERMISSION FOR THEIR REMOVAL HAS BEEN OBTAINED FROM THE HOWARD COUNTY SEDIMENT CONTROL INSPECTOR.
- SITE ANALYSIS:

TOTAL AREA OF SITE (WATER/SEWER BASINS)	1.31	ACRES (SEE NOTE #2 OF THIS SHEET)
AREA TO BE ROOFED OR PAVED	0	ACRES
AREA TO BE VEGETATIVELY STABILIZED	1.31	ACRES
TOTAL CUT (TRENCH EXCAVATION)	2.79	CU. YDS.
TOTAL FILL (TRENCH BACKFILL)	2.79	CU. YDS.
OFFSITE WASTE/BORROW AREA LOCATION		CU. YDS.
- ANY SEDIMENT CONTROL PRACTICE WHICH IS DISTURBED BY GRADING OR OTHER CONSTRUCTION ACTIVITY FOR PLACEMENT OF UTILITIES MUST BE REPAIRED ON THE SAME DAY OF DISTURBANCE.
- ADDITIONAL SEDIMENT CONTROLS MUST BE PROVIDED, IF DEEMED NECESSARY BY THE HOWARD COUNTY OPEN SEDIMENT CONTROL INSPECTOR.
- ON ALL SITES WITH DISTURBED AREAS IN EXCESS OF 2 ACRES, APPROVAL OF THE INSPECTION AGENCY SHALL BE REQUESTED UPON COMPLETION OF INSTALLATION OF PERIMETER EROSION AND SEDIMENT CONTROLS, BUT BEFORE PROCEEDING WITH ANY OTHER EARTH DISTURBANCE OR GRADING. OTHER BUILDING OR GRADING INSPECTION APPROVALS MAY NOT BE AUTHORIZED UNTIL THIS INITIAL APPROVAL BY THE INSPECTION AGENCY IS MADE.

SEQUENCE OF CONSTRUCTION

- OBTAIN THE REQUIRED GRADING PERMIT.
- INSTALL THE REQUIRED SEDIMENT AND EROSION CONTROL DEVICES, AS INDICATED ON SHEETS 2, 3 AND B OF 9, AND F93-79. SEE NOTE #8.
- CLEAR AND GRUB AS NECESSARY; ONLY AS REQUIRED FOR EXCAVATION AND INSTALLATION OF THE WATER AND SEWER MAINS. ONLY WITHIN THE DESIGNATED WATER, SEWER & UTILITY EASEMENTS. SEE NOTE #8.
- NOTE:** THE LENGTH OF OPEN WATER & SEWER MAIN TRENCH SHALL BE LIMITED TO THREE (3) PIPE LENGTHS OR THAT WHICH WILL BE BACKFILLED AND STABILIZED WITHIN ONE WORKING DAY, WHICHEVER IS SHORTER.
- BEGINNING @ EX. MH # 206 (@ OFF-SITE 20' SEWER & UTILITY EASEMENT) UP TO PROPOSED MH # 197, AND FROM EX. MH # 206 (@ OFF-SITE 20' SEWER & UTILITY EASEMENT) UP TO PROPOSED MH # 306, AND @ THE EX. 6" PLUG & BUTTRESS (3/2 FT. FROM EX. 8" x 6" TREE ON SHELLEY LAKE) UP TO THE TWO PROPOSED 6" PLUG & BUTTRESSES, AND THE EX. 6" PLUG & BUTTRESS (255 FT. FROM EX. 8" x 6" TREE ON HULLITLY DRIVE). PROPOSED 6" PLUGS AND 8" x 6" REDUCERS INDICATE LIMIT OF WATER MAIN CONSTRUCTION THIS CONTRACT. EXISTING MH'S # 205 AND # 206 INDICATE LIMIT OF SEWER MAIN CONSTRUCTION THIS CONTRACT.
- STABILIZE, SEED & MULCH ALL DISTURBED AREAS IN ACCORDANCE WITH THE PERMANENT SEEDING NOTES SHOWN ON THIS SHEET.
- FOLLOWING SUCCESSFUL STABILIZATION OF ALL DISTURBED AREAS, AND AFTER PERMISSION HAS BEEN OBTAINED FROM THE HOWARD COUNTY SEDIMENT CONTROL INSPECTOR, REMOVE ALL EROSION & SEDIMENT CONTROL DEVICES.
- NOTE:** LIMITS OF DISTURBANCE (L.O.D.) SHOWN ON THESE PLANS DELINEATE DISTURBED AREAS OUTSIDE THOSE SHOWN ON THE AUTUMN VIEW ROADS & STORM DRAINS PLANS; F93-79.

PERMANENT SEEDING NOTES:
 APPLY TO GRADED OR CLEARED AREA NOT SUBJECT TO IMMEDIATE FURTHER DISTURBANCE WHERE A PERMANENT LONG-LIVED VEGETATIVE COVER IS NEEDED.
SEEDBED PREPARATION: LOOSEN UPPER THREE-INCHES OF SOIL BY RAKING, DISCING OR OTHER ACCEPTABLE MEANS BEFORE SEEDING. IF NOT PREVIOUSLY LOOSENED, SOIL AMENDMENTS: IN LIEU OF SOIL TEST RECOMMENDATIONS, USE ONE OF THE FOLLOWING SCHEDULES:
 1) PREFERRED - APPLY 2 TONS PER ACRE DOLOMITIC LIMESTONE (92 LBS/1000 SQ. FT.) AND 600 LBS PER ACRE 10-10-10 FERTILIZER (14 LBS/1000 SQ. FT.) BEFORE SEEDING.
 HARROW OR DISC INTO UPPER THREE-INCHES OF SOIL. AT TIME OF SEEDING, APPLY 400 LBS. PER 30-0-0 UREAFORM FERTILIZER (9 LBS/1000 SQ. FT.).
 2) ACCEPTABLE - APPLY 2 TONS PER ACRE DOLOMITIC LIMESTONE (92 LBS/1000 SQ. FT.) AND 1000 LBS. PER ACRE 10-10-10 FERTILIZER (23 LBS/1000 SQ. FT.) BEFORE SEEDING. HARROW OR DISC INTO UPPER THREE-INCHES OF SOIL.
SEEDING: FOR PERIODS MARCH 1 THRU APRIL 30, AND AUGUST 1 THRU OCTOBER 15, SEED WITH 60 LBS. PER ACRE (1.4 LBS/1000 SQ. FT.) OF KENTUCKY 31 TALL FESCUE. FOR THE PERIOD MAY 1 THRU JULY 31, SEED WITH 60 LBS. KENTUCKY 31 TALL FESCUE PER ACRE AND 2 LBS. PER ACRE (.05 LBS/1000 SQ. FT.) OF KEEPING LOVEGRASS. DURING THE PERIOD OF OCTOBER 16 THRU FEBRUARY 28, PROTECT SITE BY: OPTION (1) 2 TONS PER ACRE OF WELL ANCHORED STRAW MULCH AND SEED AS SOON AS POSSIBLE IN THE SPRING. OPTION (2) USE SOIL. OPTION (3) SEED WITH 60 LBS/ACRE KENTUCKY 31 TALL FESCUE AND MULCH WITH 2 TONS/ACRE WELL ANCHORED STRAW MULCHING: APPLY 1 1/2 TO 2 TONS PER ACRE (70 TO 90 LBS/1000 SQ. FT.) OF UNROTTED SMALL GRAIN STRAW IMMEDIATELY AFTER SEEDING. ANCHOR MULCH IMMEDIATELY AFTER APPLICATION USING MULCH ANCHORING TOOL OR 218 GALLONS PER ACRE (5 GAL/1000 SQ. FT.) OF EMULSIFIED ASPHALT ON FLAT AREAS, ON SLOPES 8 FEET OR HIGHTER, USE 348 GALLONS PER ACRE (8 GAL/1000 SQ. FT.) FOR ANCHORING. MAINTENANCE: INSPECT ALL SEEDED AREAS AND MAKE NEEDED REPAIRS, REPLACEMENTS AND RESEEDINGS.
TEMPORARY SEEDING NOTES:
 APPLY TO GRADED OR CLEARED AREAS LIKELY TO BE REDISTURBED WHERE A SHORT-TERM VEGETATIVE COVER IS NEEDED.
SEEDBED PREPARATION: LOOSEN UPPER THREE-INCHES OF SOIL BY RAKING, DISCING OR OTHER ACCEPTABLE MEANS BEFORE SEEDING. IF NOT PREVIOUSLY LOOSENED, SOIL AMENDMENTS: APPLY 600 LBS PER ACRE 10-10-10 FERTILIZER (14 LBS/1000 SQ. FT.)
SEEDING: FOR PERIODS MARCH 1 THRU APRIL 30 AND FROM AUGUST 1 THRU NOVEMBER 15, SEED WITH 2 1/2 BUSHEL PER ACRE OF ANNUAL RYE (3.2 LBS/1000 SQ. FT.). FOR THE PERIOD MAY 1 THRU AUGUST 14, SEED WITH 3 LBS PER ACRE OF KEEPING LOVEGRASS (.07 LBS/1000 SQ. FT.). FOR THE PERIOD NOVEMBER 16 THRU FEBRUARY 28, PROTECT SITE BY APPLYING 2 TONS PER ACRE OF WELL ANCHORED STRAW MULCH AND SEED AS SOON AS POSSIBLE IN THE SPRING, OR USE SOIL.
MULCHING: APPLY 1 1/2 TO 2 TONS PER ACRE (70 TO 90 LBS/1000 SQ. FT.) OF UNROTTED SMALL GRAIN STRAW IMMEDIATELY AFTER SEEDING. ANCHOR MULCH IMMEDIATELY AFTER APPLICATION USING MULCH ANCHORING TOOL OR 218 GAL PER ACRE (5 GAL/1000 SQ. FT.) OF EMULSIFIED ASPHALT ON FLAT AREAS, ON SLOPES 8 FT. OR HIGHTER, USE 348 GAL PER ACRE (8 GAL/1000 SQ. FT.) FOR ANCHORING.
 REFER TO THE 1983 MARYLAND STANDARDS AND SPECIFICATIONS FOR SOIL EROSION AND SEDIMENT CONTROL FOR RATE AND METHODS NOT COVERED.



STRAW BALE DIKE DETAIL
NOT TO SCALE

STRAW BALE DIKE

- BALES SHALL BE PLACED AT THE TOE OF A SLOPE OR ON THE CONTOUR AND IN A ROW WITH ENDS TIGHTLY ABUTTING THE ADJACENT BALES.
- EACH BALE SHALL BE EMBEDDED IN THE SOIL A MINIMUM OF 4 INCHES, AND PLACED SO THE BINDINGS ARE HORIZONTAL.
- BALES SHALL BE SECURELY ANCHORED IN PLACE BY EITHER TWO STAKES OR RE-BARS DRIVEN THROUGH THE BALE. THE FIRST STAKE IN EACH BALE SHALL BE DRIVEN TOWARD THE PREVIOUSLY LAID BALE AT AN ANGLE TO FORCE THE BALES TOGETHER. STAKES SHALL BE DRIVEN FLUSH WITH THE BALE.
- INSPECTION SHALL BE FREQUENT AND REPAIR OR REPLACEMENT SHALL BE MADE PROMPTLY AS NEEDED.
- BALES SHALL BE REMOVED WHEN THEY HAVE SERVED THEIR USEFULNESS SO AS NOT TO BLOCK OR IMPED STORM FLOW OR DRAINAGE.

ENGINEER'S CERTIFICATE

I HEREBY CERTIFY THAT THIS PLAN FOR EROSION AND SEDIMENT CONTROL REPRESENTS A PRACTICAL AND WORKABLE PLAN BASED ON MY PERSONAL KNOWLEDGE OF THE SITE CONDITIONS AND THAT IT WAS PREPARED IN ACCORDANCE WITH THE REQUIREMENTS OF THE HOWARD SOIL CONSERVATION DISTRICT.
 Paul W. Keibel
 SIGNATURE OF ENGINEER
 10/08/93
 DATE

DEVELOPER'S CERTIFICATE

"I/WE CERTIFY THAT ALL DEVELOPMENT AND CONSTRUCTION WILL BE DONE ACCORDING TO THIS PLAN OF DEVELOPMENT AND PLAN FOR EROSION AND SEDIMENT CONTROL AND THAT ALL RESPONSIBLE PERSONNEL INVOLVED IN THE CONSTRUCTION PROJECT WILL HAVE A CERTIFICATE OF ATTENDANCE AT A DEPARTMENT OF THE ENVIRONMENT APPROVED TRAINING PROGRAM FOR THE CONTROL OF SEDIMENT AND EROSION BEFORE BEGINNING THE PROJECT. I ALSO AUTHORIZE PERIODIC ON-SITE INSPECTION BY THE HOWARD SOIL CONSERVATION DISTRICT OR THEIR AUTHORIZED AGENTS, AS ARE DEEMED NECESSARY".
 Bruce J. Taylor, Pres. Bonnie Branch Corporation
 SIGNATURE OF DEVELOPER
 10/08/93
 DATE

CONTRACT NO. 14-3249-D
 AUTUMN VIEW
 LOTS 1-27
 WATER AND SEWER MAIN EXTENSIONS
 HOWARD COUNTY, MARYLAND

AUTUMN VIEW
 LOTS 1-27
 CONTRACT NO. 14-3249-D
 SECOND ELECTION DISTRICT
 HOWARD COUNTY, MARYLAND

SCALE AS SHOWN
 SHEET 9 OF 9

DEPARTMENT OF PUBLIC WORKS
 HOWARD COUNTY, MARYLAND
 James J. Clum, Director of Public Works
 Robert R. Berman, Chief, Bureau of Utilities
 Paul W. Keibel, Chief, Bureau of Engineering
 Michael J. Summers, Chief, Land Development Division

FISHER, COLLINS, AND CARTER, INC.
 CONSULTING ENGINEERS AND LAND SURVEYORS
 2171 BALTIMORE NATIONAL PIKE, SUITE 100
 ELLICOTT CITY, MARYLAND 21043



DES: M.S.V.					
DRN: M.S.V.					
CHK: P.W.K.					
DATE:	BY	NO.	REVISION	DATE	

SEDIMENT & EROSION CONTROL
 NOTES & DETAILS
 600' SCALE MAP NO. 31 BLOCK NO. 3

AS-BUILT 2/2/93

WS/9 AUTUMN VIEW

3249