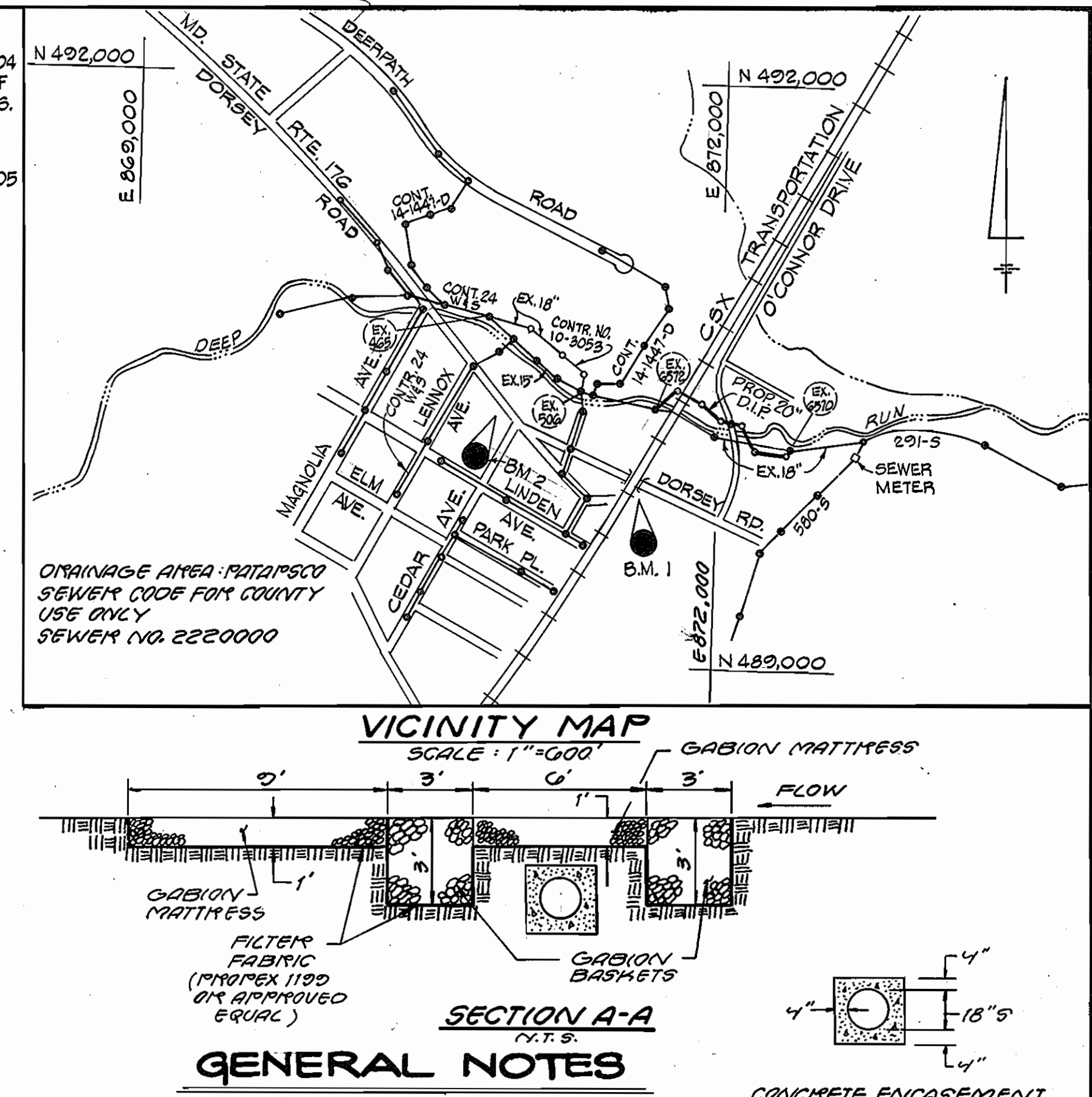
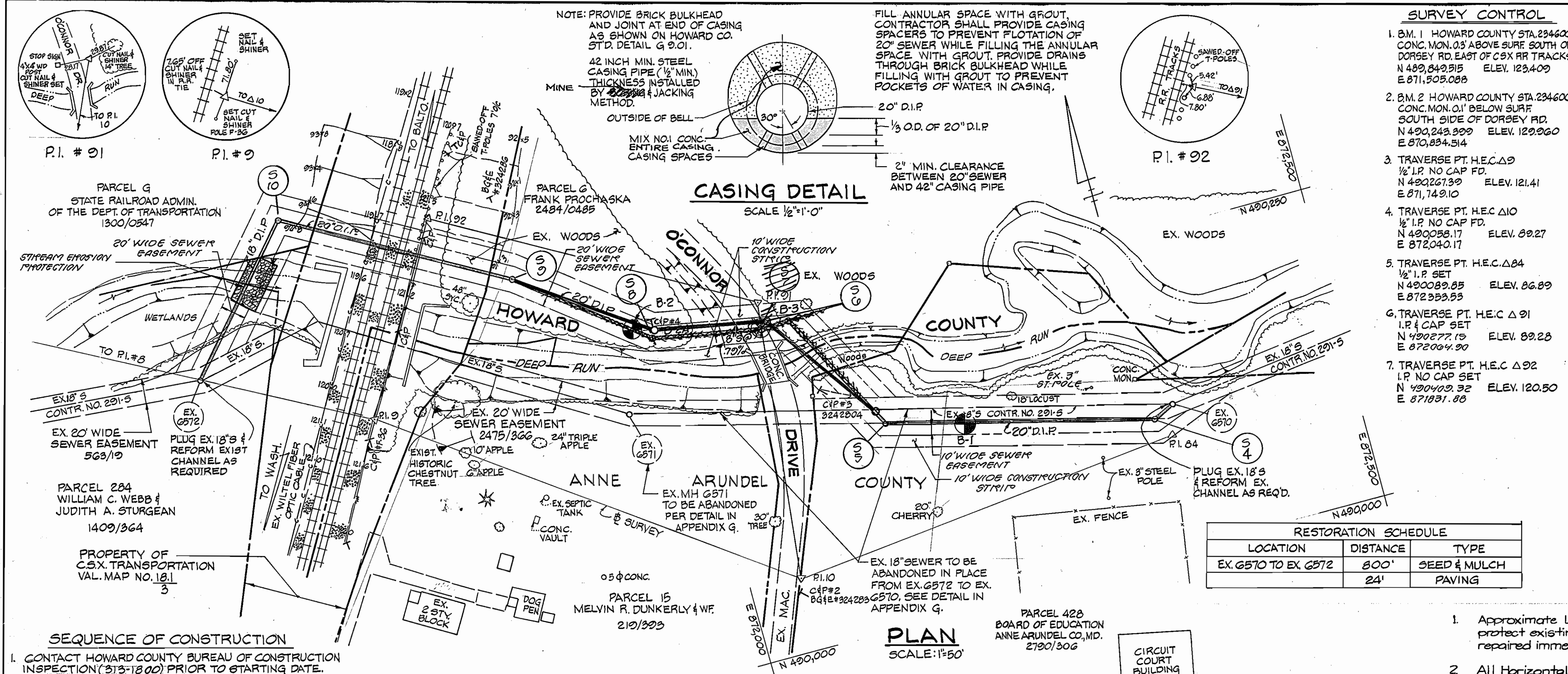


324A ws/1 Deep Run Interceptor Sewer C.P. #56124



- SEQUENCE OF CONSTRUCTION**
- CONTACT HOWARD COUNTY BUREAU OF CONSTRUCTION INSPECTION (313-1800) PRIOR TO STARTING DATE.
 - INSTALL EROSION AND SEDIMENT CONTROL DEVICES AS PER SECTION 219 OF THE HOWARD COUNTY DESIGN MANUAL VOL. IV.
 - EXCAVATE AND INSTALL PROP 18" AND 20" SEWER MAINS.
 - RESTORE PAVING AND EARTH TRENCHES TO THEIR ORIGINAL CONDITION AS PER HOWARD COUNTY STANDARDS.
 - UPON PERMISSION FROM HOWARD COUNTY SEDIMENT CONTROL INSPECTOR, REMOVE SEDIMENT CONTROL DEVICES
 - FINE GRADE ALL DISTURBED AREAS AND STABILIZE WITH PERMANENT SEEDING.

MANHOLE STAKEOUT TABLE

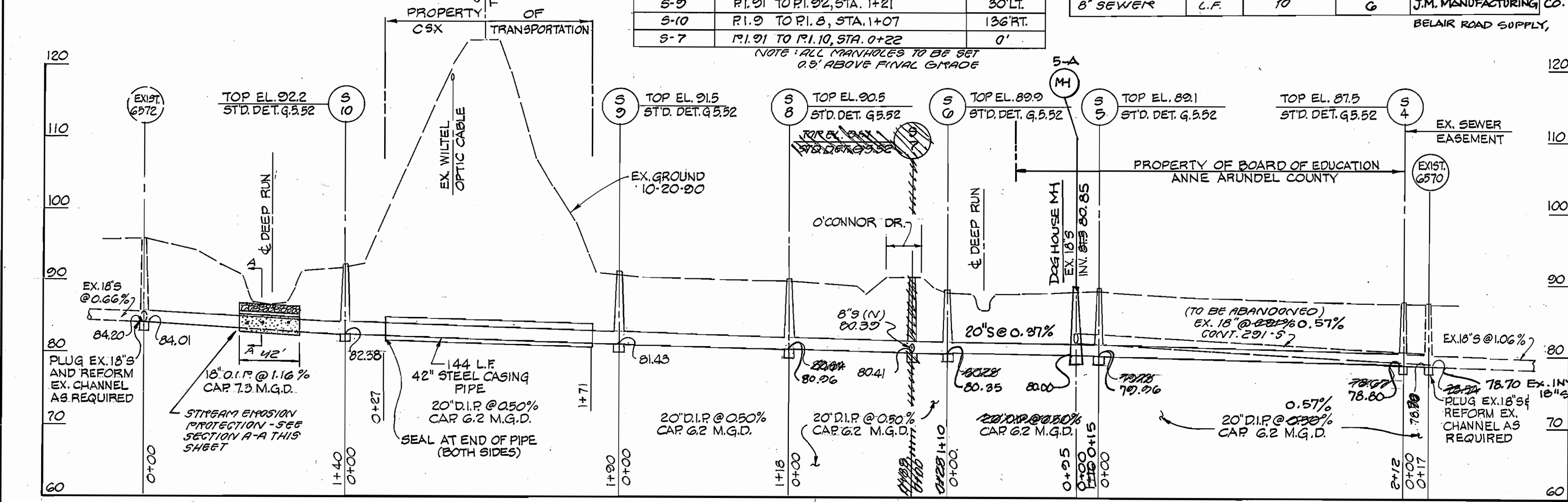
MANHOLE	DISTANCE	OFFSET
S-4	P.I. 10 TO P.I. 84, STA. 3+06	10' LT.
S-5	P.I. 10 TO P.I. 84, STA. 1+06	9' LT.
S-6	P.I. 91 TO P.I. 10, STA. 0+18	23' LT.
S-8	P.I. 91 TO P.I. 82, STA. 0+75	48' LT.
S-9	P.I. 91 TO P.I. 92, STA. 1+21	30' LT.
S-10	P.I. 9 TO P.I. 8, STA. 1+07	136' RT.
S-7	P.I. 91 TO P.I. 10, STA. 0+22	0'

NOTE: ALL MANHOLES TO BE SET 0.5' ABOVE FINISH GRADE

QUANTITIES

ITEM	UNIT	ESTIMATE	AS-BUILT	SUPPLIER
20" D.I.P. SEWER	L.F.	753	753	U.S. PIPE PRODUCTS
STD. 4" MANHOLE	EA.	7	7	ATLANTIC PRE-CAST
42" STEEL CASING	L.F.	144	144	BALTIMORE STEEL
18" O.I.P. SEWER	L.F.	130	130	U.S. PIPE PRODUCTS
8" SEWER	L.F.	10	0	J.M. MANUFACTURING CO.

BELAIR ROAD SUPPLY,



REVIEWED FOR HOWARD SOIL CONSERVATION DISTRICT AND MEETS TECHNICAL REQUIREMENTS
 [Signature] DATE 1/21/93
 U.S. SOIL CONSERVATION SERVICE

This Construction Plan is approved for Soil Erosion and Sediment Control by the Howard Soil Conservation District.
 APPROVED [Signature] DATE 1/21/93
 HOWARD S.Z.D.

PROFILE
 "I certify that this plan for erosion and sediment control represents a practical and workable plan based on my personal knowledge of the site conditions and that it was prepared in accordance with the requirements of the Howard Soil Conservation District."
 [Signature] DATE 1/21/93

"I certify that all development and construction will be done according to this plan, and that any responsible personnel involved in the construction project will have a Certificate of Attendance at a Department of the Environment Approved Training Program for the Control of Sediment and Erosion"
 [Signature] DATE 1/21/93

before beginning the project. I also authorize periodic on-site inspection by the Howard Soil Conservation District.
 [Signature] DATE 1-21-93
 Signature of Developer

DEPARTMENT OF PUBLIC WORKS
 HOWARD COUNTY, MARYLAND
 [Signature] DATE 1/20/93
 DIRECTOR OF PUBLIC WORKS
 [Signature] DATE 1-21-93
 CHIEF, BUREAU OF UTILITIES

HICKS ENGINEERING CO., INC.
 ENGINEERS - SURVEYORS - PLANNERS
 200 E. JOPPA ROAD - SUITE 402
 TOWSON MARYLAND 21204

DES:	E.A.S.	E.A.S.	1	REVISED PER HOWARD CO. REQUEST	9-12-92
DRN:	F.W.	F.W.	3	ELIMINATED BORING ON PARCEL G	9-30-92
CHK:	E.A.S.	ERS.	4	CORRECTED SPELLING OF O'CONNOR DRIVE	4-8-93
		SAC		ADDED MANHOLE S-7 (O'CONNOR DR.)	4-10-93
				AS-BUILT	10/19/93

DATE: 11-0-92 BY NO. REVISION DATE 600' SCALE MAP NO. 43,44 BLOCK NO.

DEEP RUN INTERCEPTOR SEWER
 1ST ELECTION DISTRICT
 HOWARD COUNTY, MARYLAND
 CAPITAL PROJECT S-6124
 C-240993-01 LE (1.14)

SCALE AS SHOWN
 SHEET 1 OF 1