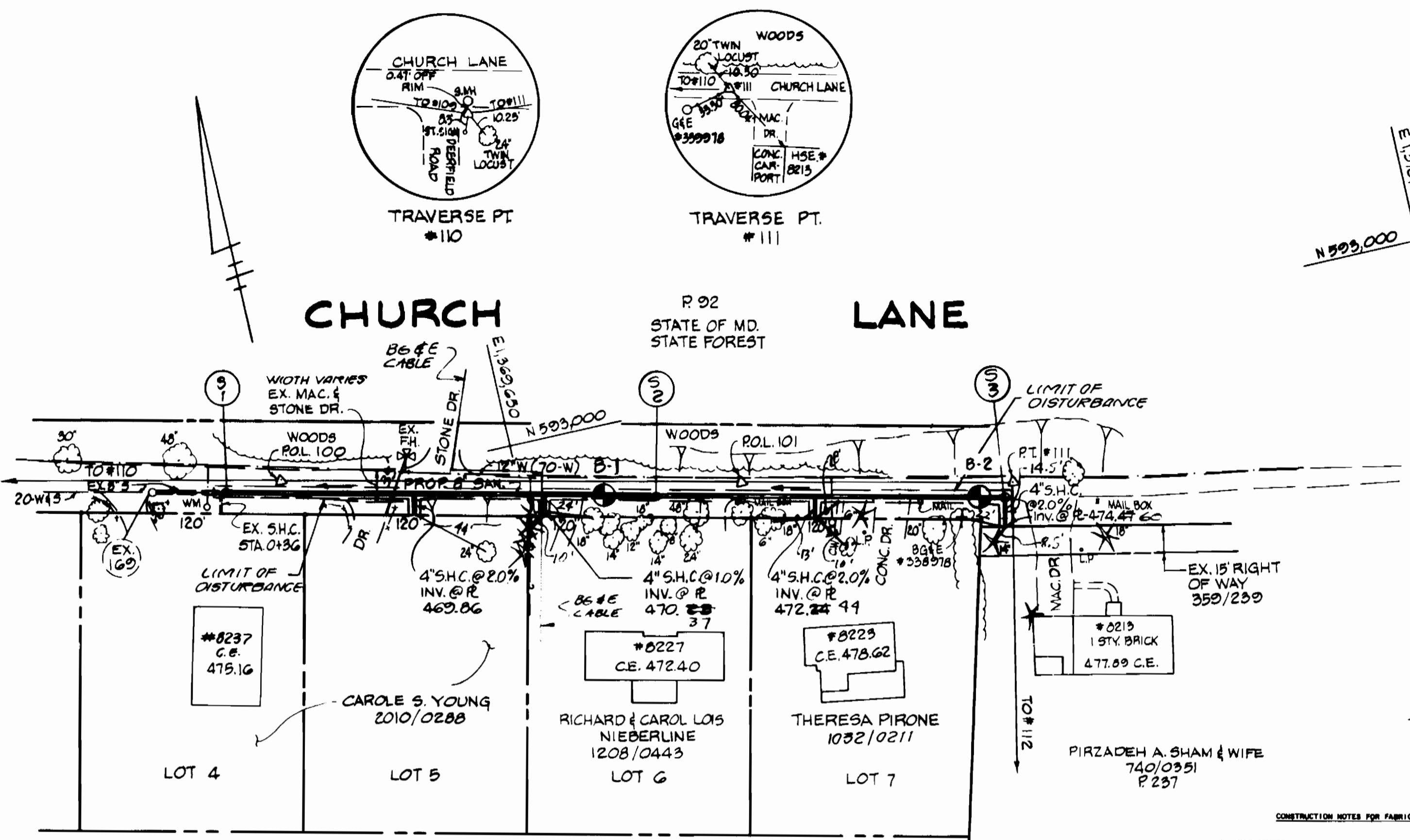
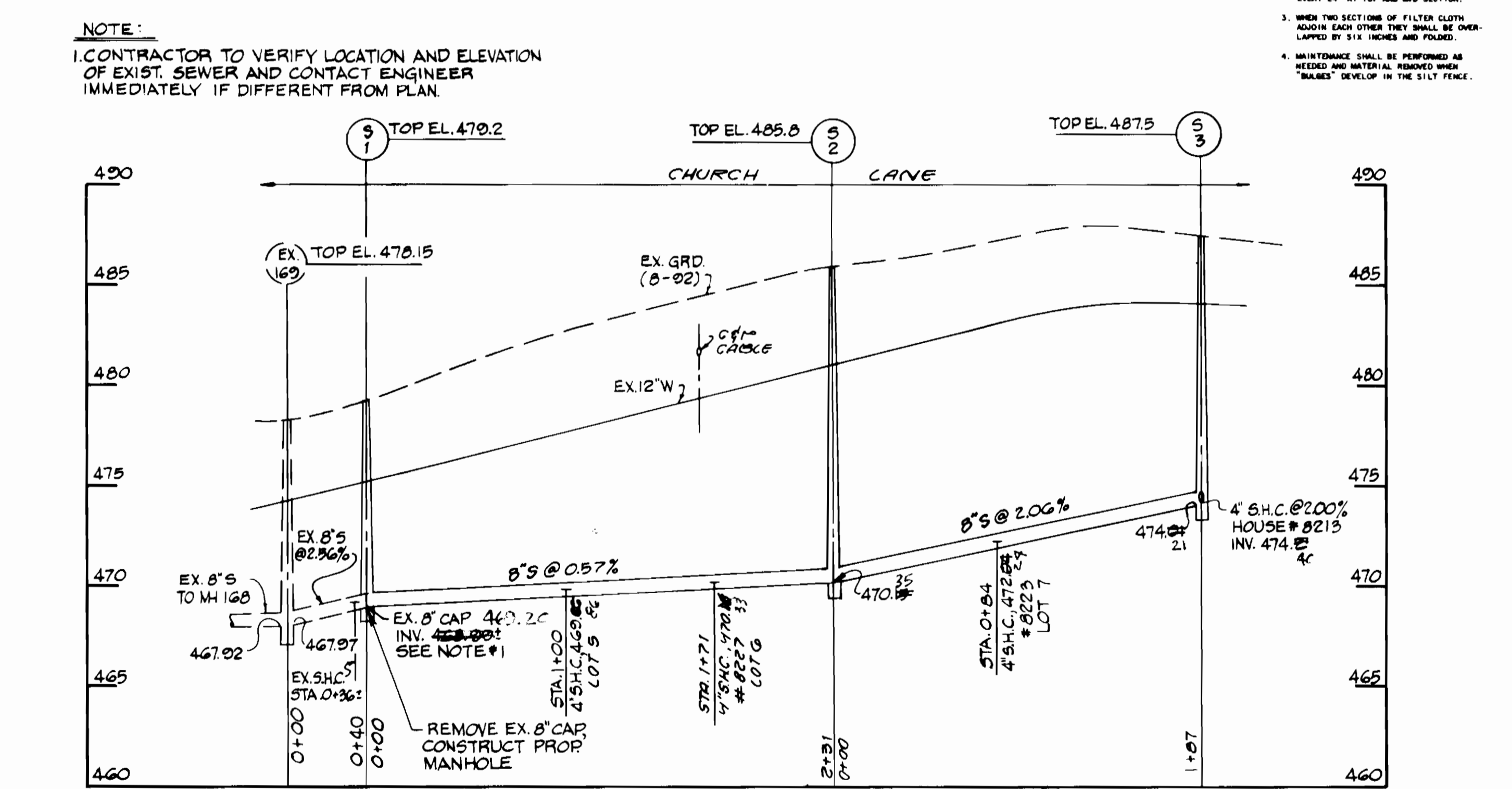


6619-C MAIN S-6194 CHURCH LANE SEWER MAIN T/5-6194



NOTE:
1. CONTRACTOR TO VERIFY LOCATION AND ELEVATION OF EXIST. SEWER AND CONTACT ENGINEER IMMEDIATELY IF DIFFERENT FROM PLAN.



CONSTRUCTION NOTES FOR FABRICATED SILT FENCE

- HIGH STRENGTH POLYPROPYLENE NETTING OR WOVEN WIRE FENCE TO BE FASTENED SECURELY TO FENCE POSTS WITH WIRE TIES OR STAPLES.
- FILTER CLOTH TO BE FASTENED SECURELY TO WOVEN WIRE FENCE WITH TIES SPACED EVERY 24" AT TOP AND MID SECTION.
- WHEN TWO SECTIONS OF FILTER CLOTH ADJOIN EACH OTHER THEY SHALL BE OVERLAPPED BY SIX INCHES AND FOLDED.
- MAINTENANCE SHALL BE PERFORMED AS NEEDED AND MATERIAL REORDERED WHEN "RAKES" DEVELOP IN THE SILT FENCE.

PORTS: STEEL EITHER 1 OR 2 TYPE OR 1/2" x 1/2" x 1/4" MIN. ACTUAL HARDWOOD

FENCE: WOVEN WIRE 14 GA. 6" MIN. HIGH OPENING OR HIGH STRENGTH POLYPROPYLENE NETTING

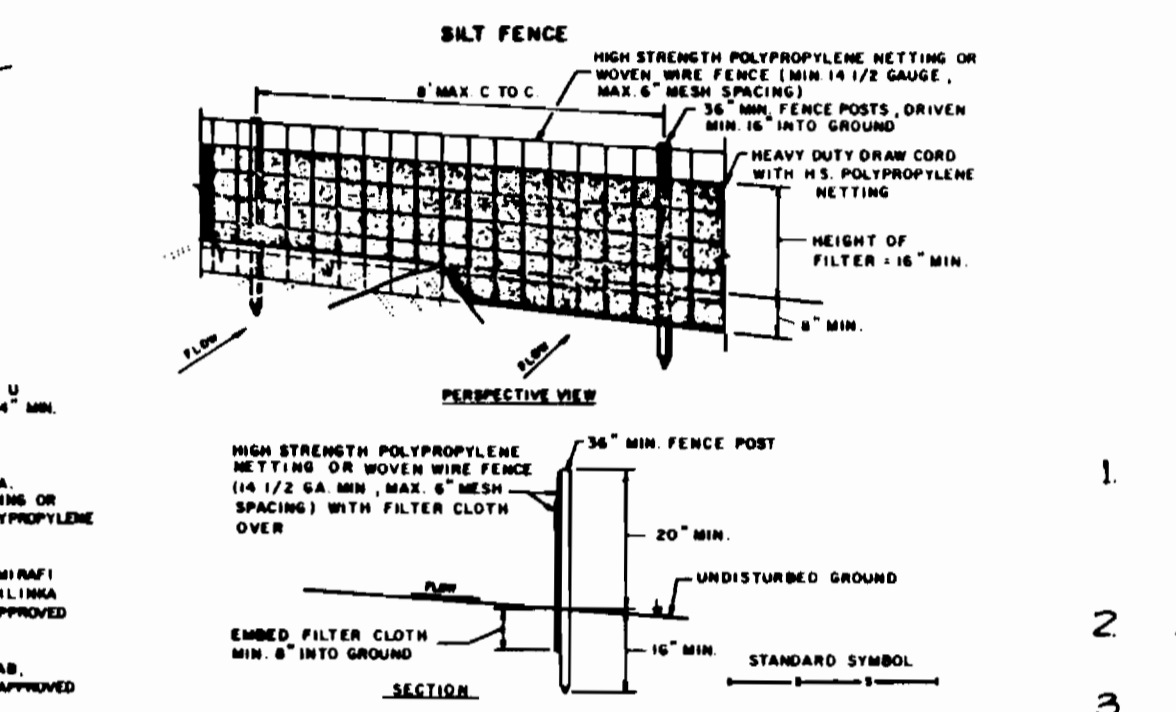
FILTER CLOTH: FILTER 2, MINIMA 100#, STABILIZING 14 GA OR APPROVED EQUAL

PREFABRICATED UNIT: 60" HIGH, 8' LONG, OR APPROVED EQUAL

QUANTITIES				
ITEM	UNIT	ESTIMATE	AS-BUILT	SUPPLIER
8" SEWER	L.F.	412'	412'	ETI/AMERICAN
STD. 4" MANHOLE	EA.	3	3	ATLANTIC
4" S.H.C.	L.F.	40'	40'	ETI/AMERICAN

RESTORATION SCHEDULE		
LOCATION	DISTANCE	TYPE
EX. 8" CAP TO S-3	418'	MAC. & STONE
4" S.H.C. TO PROP. LINE	40'	SEED & MULCH

STAKEOUT TABLE		
S-1	H.E.C. ROL. 100 TO TRAV. PT. 110 STA. 0+30	7' LT.
S-2	H.E.C. ROL. 100 TO H.E.C. ROL. 101 STA. 8+01	8' RT.
S-3	H.E.C. ROL. 101 TO H.E.C. TRAV. PT. 111, STA. 1+40	8' RT.

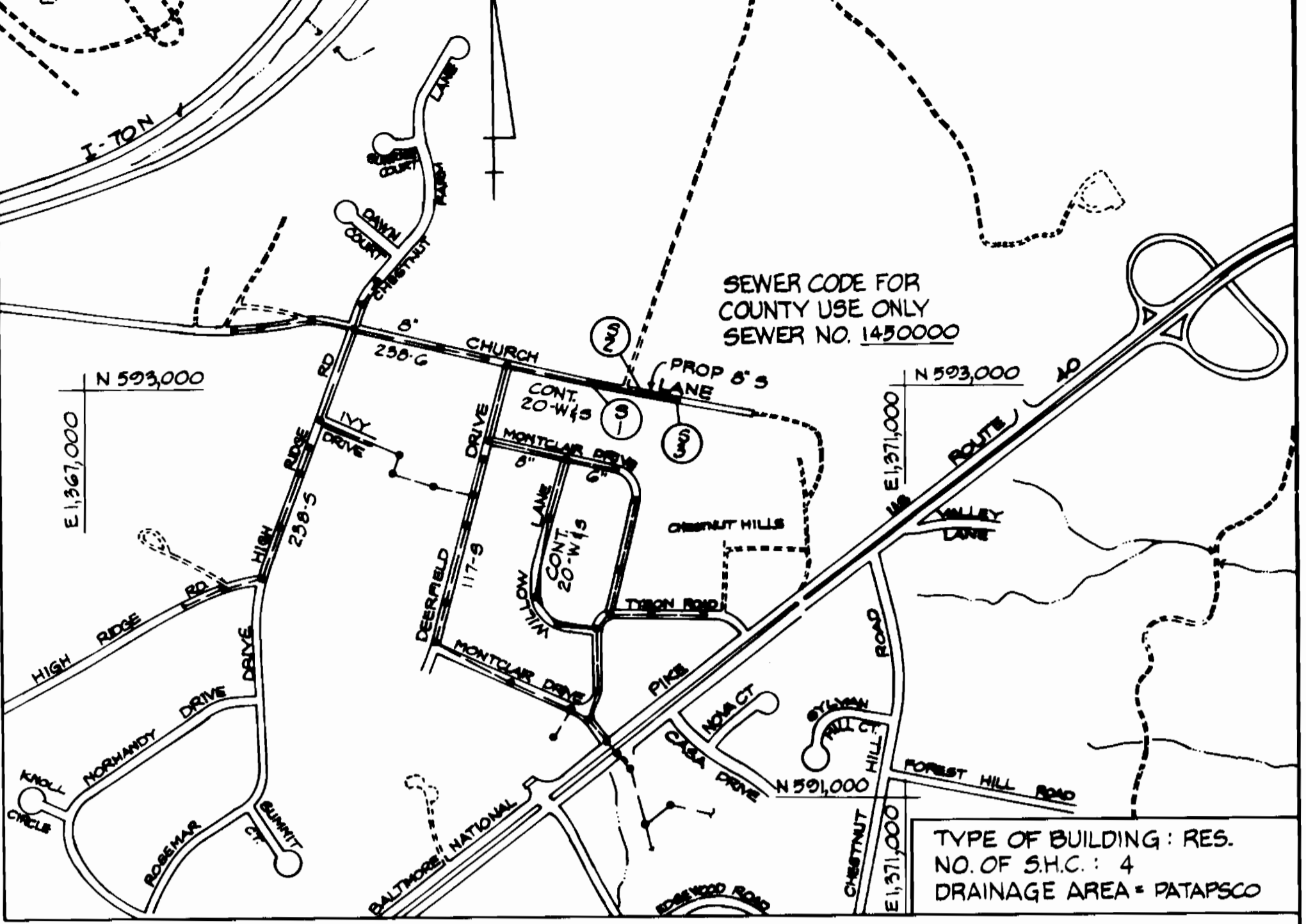


SURVEY CONTROL

- HOWARD COUNTY STATION 17FA CONC. MON. 247 NORTH OF C.R.TE. 99, 35' NORTH OF N. EDGE OF ROAD NORTH (83): 181,340.83 (M) EAST (83): 415,939.08 (M) ELEV. NA
- HOWARD COUNTY STATION 18GI CONC. MON. @ SURF 4' N. OF MAC. SHOULDER OF RTE. 40 WEST, 18' W. OF YELLOW BLINKING SIGNAL ELEV. 408.542 N 170,827.79 (M) E 416,891.11 (M)
- TRAVERSE PT. H.E.C. 110 PK & SHINER N. 593111.92 E. 136,9071.14 ELEV. 469.826
- TRAVERSE PT. H.E.C. 111 PK & SHINER N. 592921.06 E. 136,909.70 ELEV. 487.836
- TRAVERSE PT. H.E.C. 112 1/2" I.R. & CAP N. 592908.89 E. 136,904.12 ELEV. 466.646

SEQUENCE OF CONSTRUCTION

- CONTACT HOWARD COUNTY BUREAU OF CONSTRUCTION INSPECTION (792-7272) PRIOR TO STARTING DATE.
- INSTALL EROSION AND SEDIMENT CONTROL DEVICES AS PER SECTION 219 OF THE HOWARD COUNTY DESIGN MANUAL VOL. IV.
- EXCAVATE AND INSTALL 8" SEWER MAIN AND 4" S.H.C.
- RESTORE PAVING AND EARTH TRENCHES TO THEIR ORIGINAL CONDITION AS PER HOWARD COUNTY STANDARDS.
- UPON PERMISSION FROM HOWARD COUNTY SEDIMENT CONTROL INSPECTOR, REMOVE SEDIMENT CONTROL DEVICES.
- FINE GRADE ALL DISTURBED AREAS AND STABILIZE WITH PERMANENT SEEDING.



GENERAL NOTES

- Approximate Location of existing mains are shown. The Contractor shall take all necessary precautions to protect existing mains and services and maintain uninterrupted supply. Any damage incurred shall be repaired immediately to the satisfaction of the Engineer at the Contractor's expense.
- All Horizontal Controls shown are based on Maryland State Coordinates.
- All Vertical Controls are based on U.S.G.S. Datum.
- All pipe elevations shown are invert elevations.
- Clear all utilities by a minimum of 6'. Clear all poles by 2'-0" minimum or tunnel as required.
- For details not shown on the Drawings, and for materials and construction methods, use Howard County Design Manual, Volume IV, Standard Specification And Details For Construction. The Contractor shall have a copy of Volume IV on the job.
- Where test pits have been made on existing utilities, they are noted by the symbol [X] at location of test pit. A note or notes containing the results of the test pit or pits is included on the drawings. Existing utilities in the vicinity of the proposed work for which tests have not been dug shall be located by the Contractor two weeks in advance of construction operations at the Contractor's expense.
- The Contractor shall notify the following utility companies or agencies at least five working days prior to starting work shown on this plan:

C&P Telephone Company	597-8585
State Highway Administration	531-5533
Baltimore Gas & Electric Co. Contractor Service	850-4620
Baltimore Gas & Electric Co. Underground Damage Control	859-9004
Baltimore Gas & Electric Co. Trouble Shooting	258-5001
MISS UTILITY	1-800-257-7777
Colonial Pipeline	755-1350
Bureau of Utilities, Howard County Dept. of Public Works	315-4900
- Trees and shrubs are to be protected from damage to the maximum extent. Trees and shrubs located within the construction strip are not to be removed or damaged by the Contractor.
- Contractor shall remove trees, stumps and roots along line of excavation. Payment for such removal shall be included in the unit price bid for construction of the main.
- All sewer mains shall be D.I.P. or P.V.C. unless otherwise noted.
- Manholes shown with 12" and 16" walls are for brick manholes only.
- All manholes shall be 4'-0" inside diameter unless otherwise noted.
- Trench repair to be in accordance with Howard County Standard Details.
- All work will be in accordance with Howard County Standards and Specifications for Soil Erosion and Sediment Control Section 219.
- Length of open trench will be limited to that which can be filled and stabilized within one working day.

REVIEWED FOR HOWARD SOIL CONSERVATION DISTRICT AND MEETS TECHNICAL REQUIREMENTS

James P. Hildebrand 4/2/92
U.S. SOIL CONSERVATION SERVICE DATE

This Construction Plan is approved for Soil Erosion and Sediment Control by the Howard Soil Conservation District.

APPROVED: *John P. Robertson* 4/10/92
HOWARD S.C.D. DATE

DEPARTMENT OF PUBLIC WORKS
HOWARD COUNTY, MARYLAND

James M. Brown 11-18-92
DIRECTOR OF PUBLIC WORKS DATE

Robert R. Berman 11-10-92
CHIEF, BUREAU OF UTILITIES DATE

Robert R. Berman 10-26-92
CHIEF, WATER & SEWER DESIGN DIV. DATE

HICKS ENGINEERING CO., INC.
ENGINEERS - SURVEYORS - PLANNERS
200 E. JOPPA ROAD SUITE 402
TOWSON MARYLAND 21286

Walter S. Hicks, P.E.

DES: E.A.S.
DRN: F.W.
CHK: E.A.S.
DATE: 9-21-92

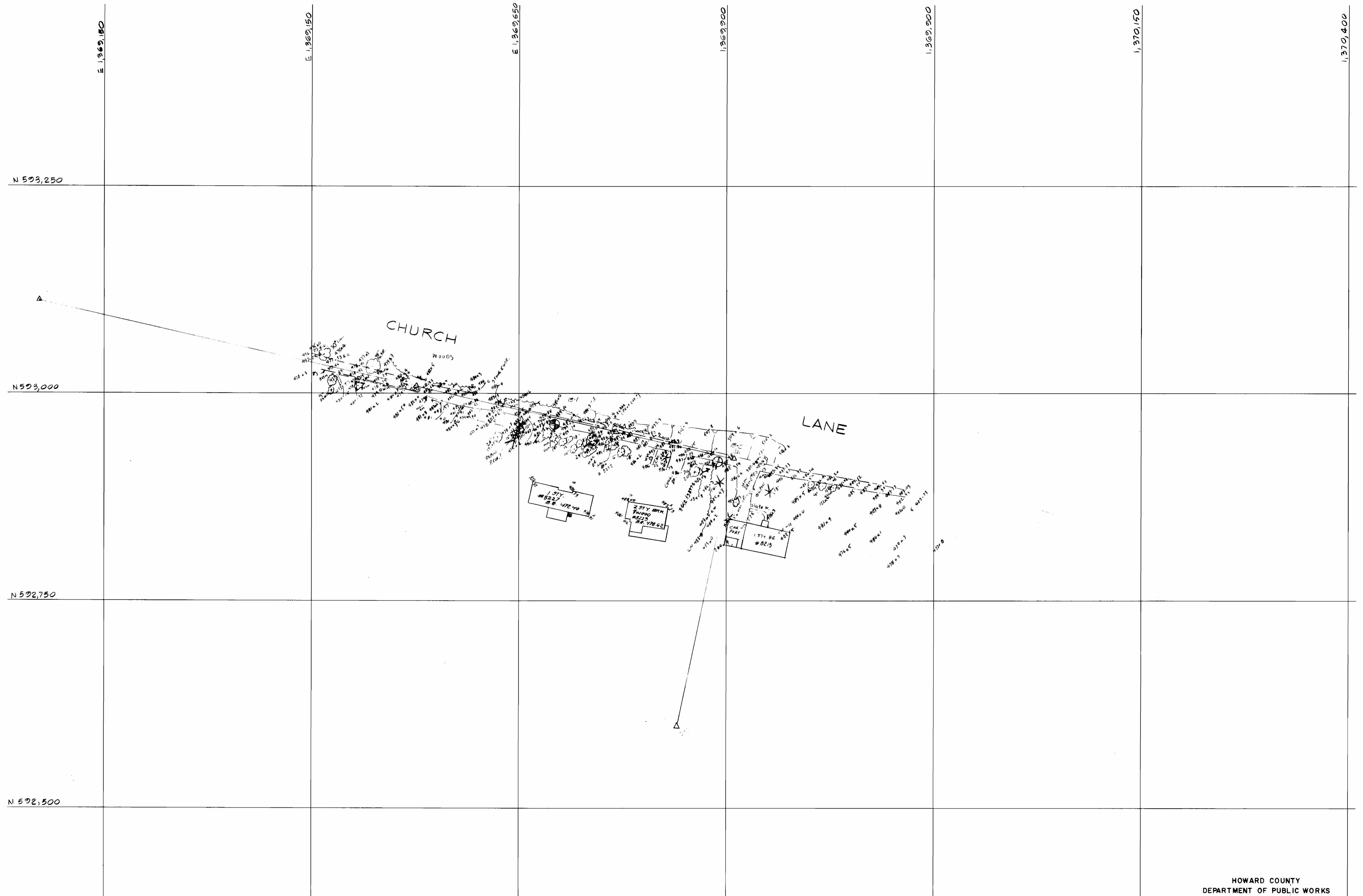
CONTRACT NO. 10-3235

600' SCALE MAP NO. 18 BLOCK NO. 14

CHURCH LANE SEWER MAIN
ELECTION DISTRICT NO. 2
HOWARD COUNTY, MARYLAND
CAPITAL PROJECT S-6174

SCALE AS SHOWN
SHEET 1 OF 1

3235 Pos. sh. / C.P.# S-6194 CHURCH LANE S.M



HOWARD COUNTY
DEPARTMENT OF PUBLIC WORKS
BUREAU OF ENGINEERING

Scale: 1" = 50'

Map No. _____ CHURCH