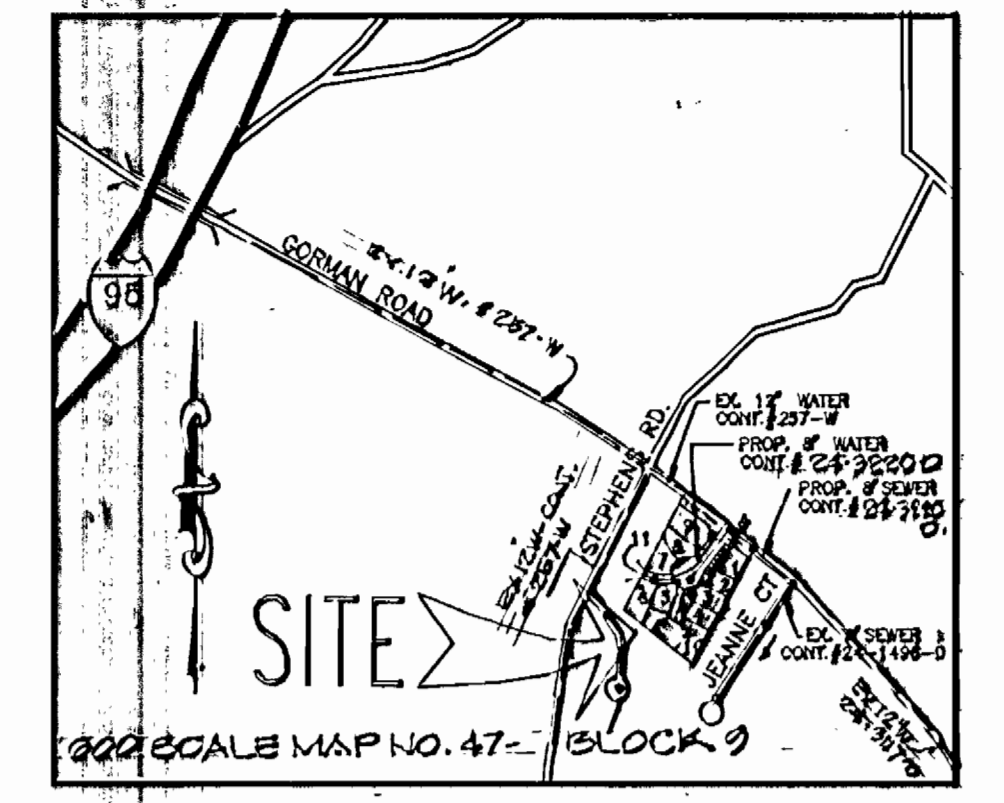
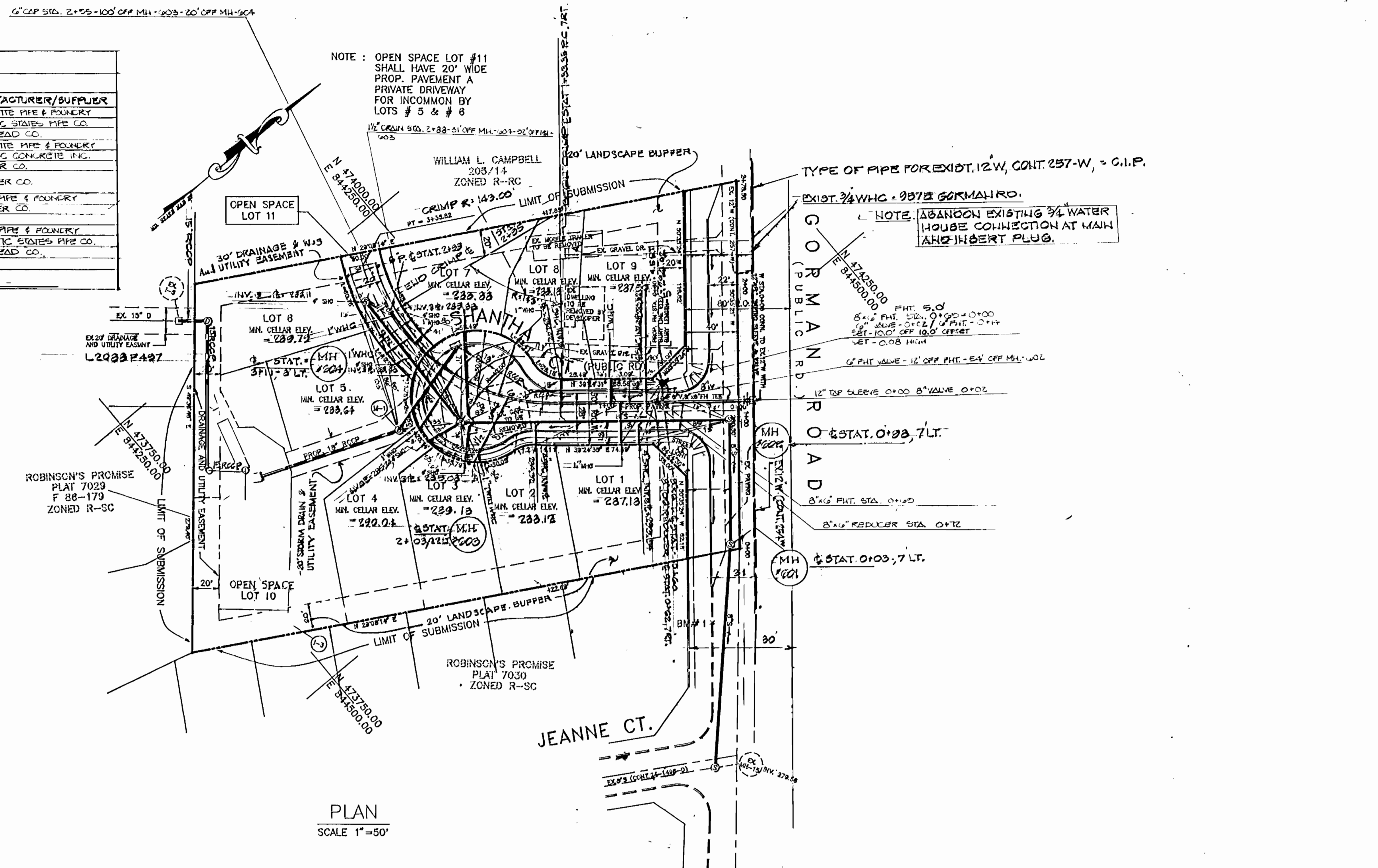


QUANTITIES			
ITEM	QUANTITIES ESTIMATED	AS BUILT	MANUFACTURER/SUPPLIER
8" SEWER	883 LF	883 LF	PVC CHARLOTTE PIPE & FOUNDRY
8" WATER	72 LF	72 LF	D.I.P. ATLANTIC STATES PIPE CO.
4" WHC	233 LF	233 LF	"K" COPPER WALSTEAD CO.
4" SHC	281 LF	281 LF	PVC CHARLOTTE PIPE & FOUNDRY
STD. MANHOLE	4 EACH	4 EA.	FRS-4-1 ATLANTIC CONCRETE INC.
8" FIT	1 EACH	1 EA.	CAST IRON MUELLER CO.
12" X 2" TAPPING SLEEVE & VALVE	1 EACH	1 EA.	CAST IRON D.I.P. MUELLER CO.
8" X 8" TEE	1 EACH	1 EA.	D.I.P. TYLER PIPE & FOUNDRY
8" VALVE	1 EACH	1 EA.	CAST IRON MUELLER CO.
3" TO 6" REDUCER	1 EA.	1 EA.	D.I.P. TYLER PIPE & FOUNDRY
8" WATER	234 LF	234 LF	D.I.P. ATLANTIC STATES PIPE CO.
1/2" WHC	30 LF	30 LF	"K" COPPER WALSTEAD CO.
NAME OF UTILITY CONTRACTOR: W.F. WILSON & SON, INC.			
SURVEY AND GRADING DIVISION AS BUILT DATE			

INFORMATION CHART	
TYPE OF BUILDING	SINGLE FAMILY DETACHED
NO. OF LOTS	11
NO. OF WHC	9
NO. OF SHC	9
DRAINAGE AREA	LITTLE PATUXENT
TREATMENT PLANT	44VAGE
WATER CODE	C03
SEWER CODE	737 0000
TEST GRADE	530.00

G.C.P. STD. 2+05-100' OFF MH-1403-20' OFF MH-1404

NOTE: OPEN SPACE LOT #11 SHALL HAVE 20' WIDE PROP. PAVEMENT A PRIVATE DRIVEWAY FOR INCOMMON BY LOTS # 5 & # 8

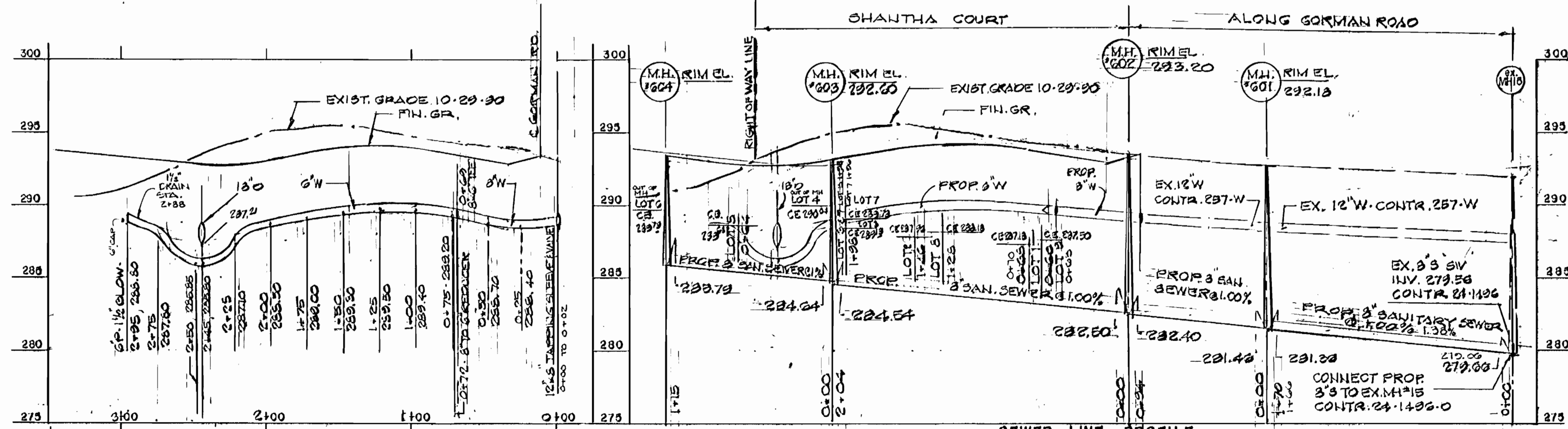


VICINITY MAP SCALE 1" = 600'

GENERAL NOTES:

- Approximate location of existing mains are shown. The contractor shall take all necessary precautions to protect existing mains and services and maintain uninterrupted supply. Any damage incurred shall be repaired immediately to the satisfaction of the Engineer at the Contractor's expense.
- All horizontal controls are based on Maryland State Coordinates.
- All vertical controls are based on U.S.G.S. data.
- All pipe elevations shown are invert elevations.
- Clear all utilities by a minimum of 6". Clear all poles by 2'-0" minimum or tunnel as required. The owner has contracted the utility companies and has made arrangements for bracing of poles as shown on the drawings. In the event the contractor's work requires the bracing of additional poles or damages shall be deducted from money owed the contractor. The contractor shall coordinate with the utility companies to schedule the bracing of the poles.
- For details not shown on the drawings, and for materials and construction methods use Howard County Design Manual, Vol. IV, Standard specifications and Detail for Construction (Latest Edition). The contractor shall have a copy of Volume IV on the job.
- Where test pits have been made on existing utilities, they are noted by the symbol at the location of the test pit. A note or notes containing the results of the test pit or pits is included on the drawings. Existing utilities in the vicinity of the proposed work for which test pits have not been dug shall be located by the contractor two weeks in advance of the construction operations at his own expense.
- Contractors shall notify the following utility companies or agencies at least five working days before starting work shown on these plans:
 State Highway Administration 331-5533
 BGS Co. Contractor Services 350-4820
 BGS Co. Under Ground Damage Control 787-3088
 Miss Utility 1 800 257-7777
 Colonial Pipeline Co. 795-1390
 Howard County Department of Public Works 313-4900
 Bureau of Utilities
- Trees and shrubs are to be protected from damage to maximum extent. Trees and shrubs located within the construction strip are not to be removed or damaged by the contractor.
- Contractors shall remove trees, stumps and roots along line of excavation. Payment for such removal shall be included in the unit price bid for construction of the main.
- All water mains to be D.I.P. Class 52 unless otherwise noted.
- Top of all water mains to have a minimum of 3-1/2' cover unless otherwise noted.
- Valves adjacent to trees shall be strapped to trees.
- All fittings shall be buttressed or anchored with concrete in accordance with the Standard Details unless otherwise provided for on the drawings.
- Fire hydrants shall be set to the bury line elevations shown on the drawings and shall be set to the bury line elevations shown on the drawings and shall be set to the bury line elevations shown on the drawings.
- The contractor shall not operate any water main valves on existing water system.
- All water house connections shall be for inside meter setting unless otherwise noted on plans or in specifications.
- All sewer mains shall be D.I.P. RCP, VCPX, CSPX, RCCP and P.V.C. unless otherwise noted.
- The contractor shall provide a joint in all sewer mains with in 2'-0" of exterior manhole wall.
- All manholes shall be 4'-0" inside diameter unless otherwise noted.
- Manholes shown with 12" and 18" walls are for brick manholes only.
- Manholes designated W.T. in plan and profile shall have watertight frame and covers, Standard Details G8.52. Where watertight manhole frame and cover is used, set top of frame 1'-0" above finished grade unless otherwise noted on the drawings.
- Houses with the symbol "C.N.S" indicates that cellar cannot be served.

PLAN SCALE 1" = 50'



PROFILE OF WATER LINE SCALE: HOR. 1" = 50' VER. 1" = 5'

SEWER LINE - PROFILE SCALE: HOR. 1" = 50' VER. 1" = 5'

BENCHMARK
 HOWARD CO. MON. #1241003 ELEV. 299.433
 COR. GORMAN & STEPHENS ROS.
 CROSS CUT TOP EX. CONC. CURB EL. 291.20
 1104 NORTHWEST OF CL JEANNE CT.

SOIL CONSERVATION MEASURES FOR THIS CONTRACT WILL IMPLEMENTED IN ACCORDANCE WITH SECTION 219 OF THE HOWARD COUNTY STANDARD SPECIFICATIONS AND AS PER ROAD CONSTRUCTION PLAN E-72-162

THIS PLAN IS APPROVED FOR EROSION AND SEDIMENT CONTROL BY THE HOWARD COUNTY SOIL CONSERVATION DISTRICT.
 APPROVED: *[Signature]* 6/24/93
 HOWARD COUNTY SOIL CONSERVATION DISTRICT
 APPROVED: *[Signature]* 6/22/93
 U.S. SOIL CONSERVATION SERVICE

DEPARTMENT OF PUBLIC WORKS
 HOWARD COUNTY, MARYLAND
 Director of Public Works: *[Signature]* 6/24/93
 Chief, Bureau of Engineering: *[Signature]* 6/24/93
 Chief, Bureau of Utilities: *[Signature]* 6/24/93
 Chief, Land Development Division: *[Signature]* 6/24/93

LAND DEVELOPMENT CONSULTANTS INC.
 19 BRANLEY COURT
 BALTIMORE, MD. 21228
 788-1733

DES:	
DRN:	
CHK:	
DATE:	
BY NO.	
REVISION	

PLAN & PROFILE
 WATER & SEWER MAIN
 CONTRACT No. 24-3220-0

SHANTHA COURT
 LOTS 1 THRU 11
 TAX MAP 47 PARCEL 487 601 ELECTION DISTRICT HOWARD COUNTY MD.

SCALE AS SHOWN
 SHEET 1 OF 2

AS-BUILT 3/17/54