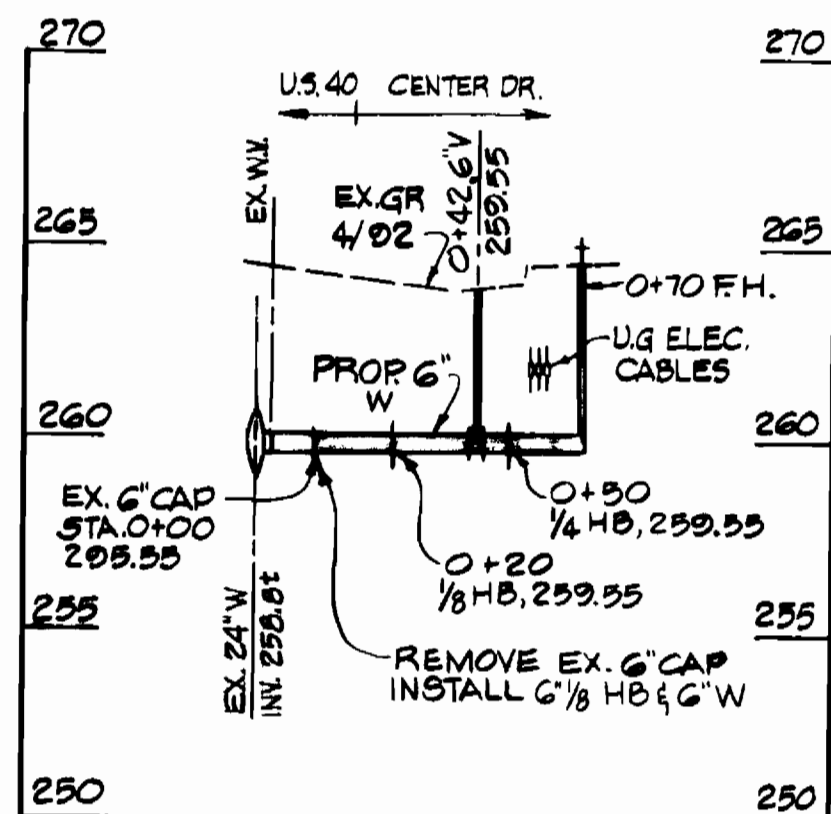


**PLAN**  
SCALE: 1"=30'



**PROFILE**  
SCALE: HOR. 1"=50'  
VERT. 1"=5'

By the Engineer

I certify that this plan for erosion and sediment control represents a practical and workable plan based on my personal knowledge of the site conditions and that it was prepared in accordance with the requirements of the Howard County Conservation District.

*James E. Hicks, P.E.* 9/2/92  
Signature of Engineer Date

**SURVEY CONTROL**

- HOWARD COUNTY CONTROL STATION 24C2 CONC. MON. @ SURFACE, 55' S. OF LEFT TURN LANE OF RTE. 40 WEST, 14' E. OF EAST EDGE OF CROSSOVER TO RTE. 99 S.  
ELEV. 354.230  
N 179420.32 (M)  
E 416369.27 (M)
- HOWARD COUNTY CONTROL STATION 18G1 CONC. MON. @ SURFACE 4' N. OF MAC. SHOULDER OF RTE. 40 WEST, 18' W. OF YELLOW BLINKING SIGNAL.  
ELEV. 408.54  
N 179827.79 (M)  
E 416891.11 (M)
- TRAVERSE PT. H.E.C. 101  
1/2" I.P. & CAP  
N 179614.08 (M)  
E 416628.28 (M)  
ELEV. N/A
- TRAVERSE PT. H.E.C. 102  
1/2" I.P. & CAP  
N 179687.24 (M)  
E 416694.68 (M)  
ELEV. 364.59

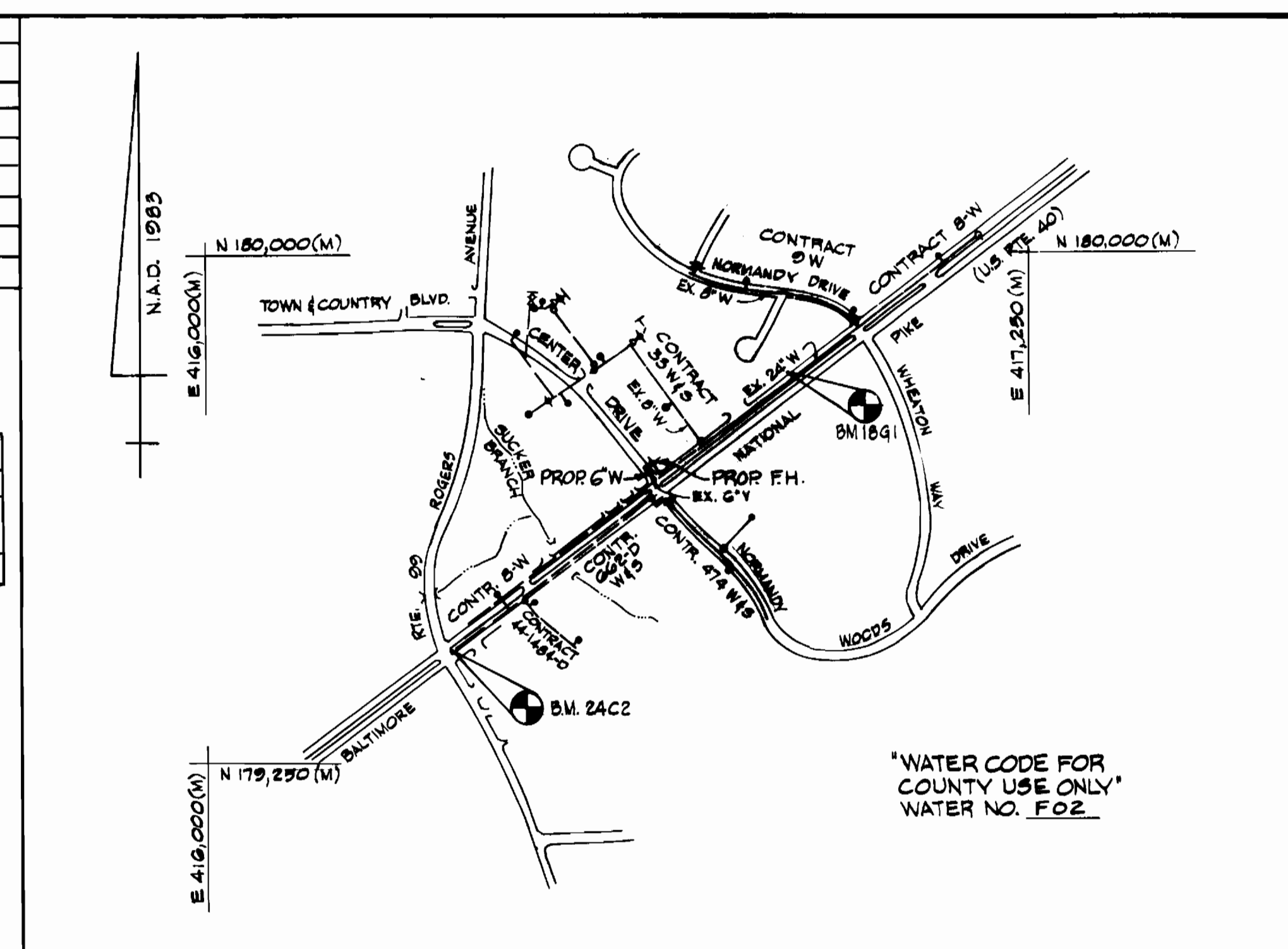
**Sequence Of Construction**

- Contact Howard County Bureau of Construction Inspection (792-7272) prior to starting date.
- Install erosion and sediment control devices as per Section 219 of the Howard County Design Manual Vol. II.
- Excavate and install proposed 6" water main and Fire Hydrant.
- Restore paving and earth trenches to their original condition as per Howard County standards.
- Upon permission from Howard County Sediment Control Inspector, remove Sediment Control Devices.
- Final grade all disturbed areas and stabilize with permanent seeding.

QUANTITIES				
ITEM	UNIT	ESTIMATE	AS-BUILT	SUPPLIER
6" WATER	L.F.	70		
6" 1/2" HB	EA.	2		
6" 1/4" HB	EA.	1		
FIRE HYDRANT	EA.	1		
6" VALVE	EA.	1		

RESTORATION SCHEDULE		
LOCATION	DISTANCE	TYPE
EX. 6" CAP TO	50'	PAVING
FIRE HYDRANT		
GRASS @ F.H.	20'	SEED & MULCH

STAKEOUT TABLE		
FITTING	DISTANCE	OFFSET
6" 1/2" HB	H.E.C. 101 TO H.E.C. 102, STA. 2+36	85' LT.
6" 1/4" HB	" " " " " , STA. 2+39	115' LT.
FIRE HYDRANT	" " " " " , STA. 2+52	115' LT.
6" VALVE	" " " " " , STA. 2+54	106' LT.



**VICINITY MAP**  
SCALE: 1"=600'

**GENERAL NOTES**

- Approximate location of existing mains are shown. The Contractor shall take all necessary precautions to protect existing mains and services and maintain uninterrupted supply. Any damage incurred shall be repaired immediately to the satisfaction of the Engineer at the Contractor's expense.
- All Horizontal Controls shown are based on Maryland State Coordinates.
- All Vertical Controls are based on U.S.G.S. Datum.
- All pipe elevations shown are invert elevations.
- Clear all utilities by a minimum of 6". Clear all poles by 2'-0" minimum or tunnel as required.
- For details not shown on the Drawings, and for materials and construction methods, use Howard County Design Manual, Volume II, Standard Specification And Details For Construction. The Contractor shall have a copy of Volume II on the job.
- Where test pits have been made on existing utilities, they are noted by the symbol [ ] at location of test pit. A note or notes containing the results of the test pit or pits is included on the drawings. Existing utilities in the vicinity of the proposed work for which tests have not been dug shall be located by the Contractor two weeks in advance of construction operations at the Contractor's expense.
- The Contractor shall notify the following utility companies or agencies at least five working days prior to starting work shown on this plan:  
 C&P Telephone Company 597-8585  
 State Highway Administration 531-5533  
 Baltimore Gas & Electric Co. Contractor Service 850-4620  
 Baltimore Gas & Electric Co. Underground Damage Control 859-9004  
 Baltimore Gas & Electric Co. Trouble Shooting 298-9001  
 MISS UTILITY 1-800-257-7777  
 Colonial Pipeline 795-1590  
 Bureau of Utilities, Howard County Dept. of Public Works 313-4900
- Trees and shrubs are to be protected from damage to the maximum extent. Trees and shrubs located within the construction strip are not to be removed or damaged by the Contractor.
- Contractor shall remove trees, stumps and roots along line of excavation. Payment for such removal shall be included in the unit price for construction of the main and service connections.
- All water mains shall be D.I.P. C.I. 52 unless otherwise noted.
- Top of all water main pipe to have a minimum of 3 1/2' of cover unless otherwise noted.
- Valves adjacent to tees shall be strapped to tees.
- All fittings shall be buttressed or anchored with concrete in accordance with the Standard Details unless otherwise provided for on the drawings.
- Fire Hydrants shall be set to the bury line elevations shown on the drawings. All Fire Hydrants shall be strapped and buttressed with concrete in accordance with the Standard Details. Soil around the fire hydrants shall be compacted in accordance with Section 1003 of the Standard Specifications.
- The Contractor shall not operate any water main valves on the existing water system. Call Howard Co. Bureau Of Utilities at 313-4900. Coordinate the tie-in to the existing 6" water at least five working days prior to scheduling.
- Trench repair to be in accordance with Howard Co. Standard Details.
- All work will be in accordance with Howard County Standards and Specifications for Soil Erosion and Sediment Control Section 219.

DEPARTMENT OF PUBLIC WORKS HOWARD COUNTY, MARYLAND Director of Public Works: <i>James E. Hicks, P.E.</i> 9/10/92 Chief, Bureau of Engineering: <i>[Signature]</i> 9-10-92 Chief, Bureau of Utilities: <i>[Signature]</i> 9-9-92 Chief, Utility Design Division: <i>[Signature]</i> 9-4-92	HICKS ENGINEERING CO., INC. ENGINEERS - SURVEYORS - PLANNERS 200 E. JOPPA ROAD - SUITE 402 TOWSON MARYLAND 21204	DES: E.A.S.				FIRE HYDRANT RELOCATION CONTRACT NO. 44-3215	US 40/CENTER DRIVE 2ND ELECTION DISTRICT HOWARD COUNTY, MARYLAND CAPITAL PROJECT W-8156	SCALE AS SHOWN
		DRN: F.W.						SHEET 1 OF 1
		CHK: E.A.S.						
		DATE: 8-10-92	BY: NO.	REVISION	DATE	600' SCALE MAP NO. W-18	BLOCK NO. 12	